

The background of the image is a photograph of a coastal scene. In the foreground, there are large, dark, jagged rocks. The middle ground shows white, foamy waves crashing against the shore. The background is a clear blue sky. The text is overlaid on the image in a stylized, outlined font.

Our Place in Canada

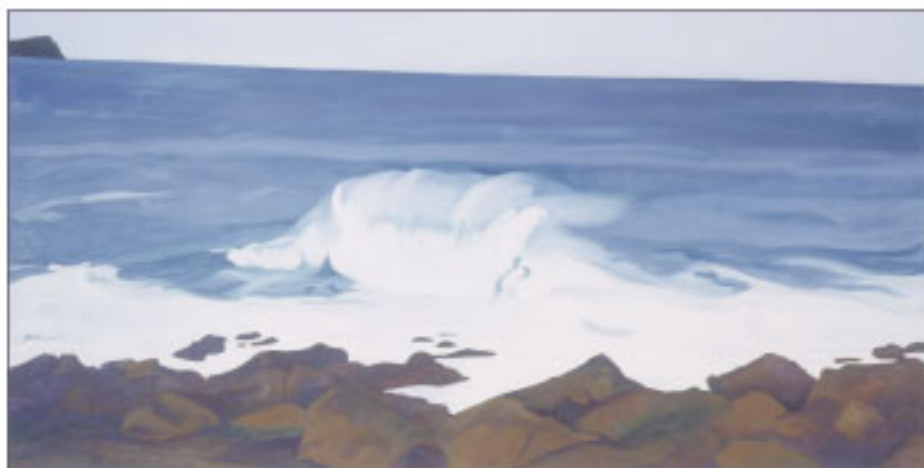
ISBN: 1-55146-209-5

Copies of this Report, the Summary Report, and Research Volumes may be obtained from:

Office of the Queen's Printer
Confederation Building
St. John's, Newfoundland and Labrador
A1C 5T4
Phone: (709) 729 - 3649

Royal Commission on Renewing and Strengthening Our
Place in Canada

www.gov.nl.ca/royalcomm



Cover:

©Tara T. Bryan
Cape Spear Wave II
1993, Oil on Canvas, 36" x 72"