



Fisheries, Forestry and Agriculture

NOTICE OF INTENT

Section 7 of the *LANDS ACT*

NOTICE IS HEREBY given that an application has been made to the Department of Fisheries, Forestry and Agriculture, Crown Lands Division, to acquire title, pursuant to section 7(2) d of the said Act.

To that piece of Crown lands situated within 15 metres of the waters of: Lookout Pond
for the purpose of: Hiking Trail

Application Number: 162464

Region: Eastern

Date of Posting: April 2, 2024

The land is described as follows:

Approximate Dimensions of the land to the extent of the intrusion on the 15 metre reservation:

Frontage (metres): 3.0

Depth (metres): 1,200

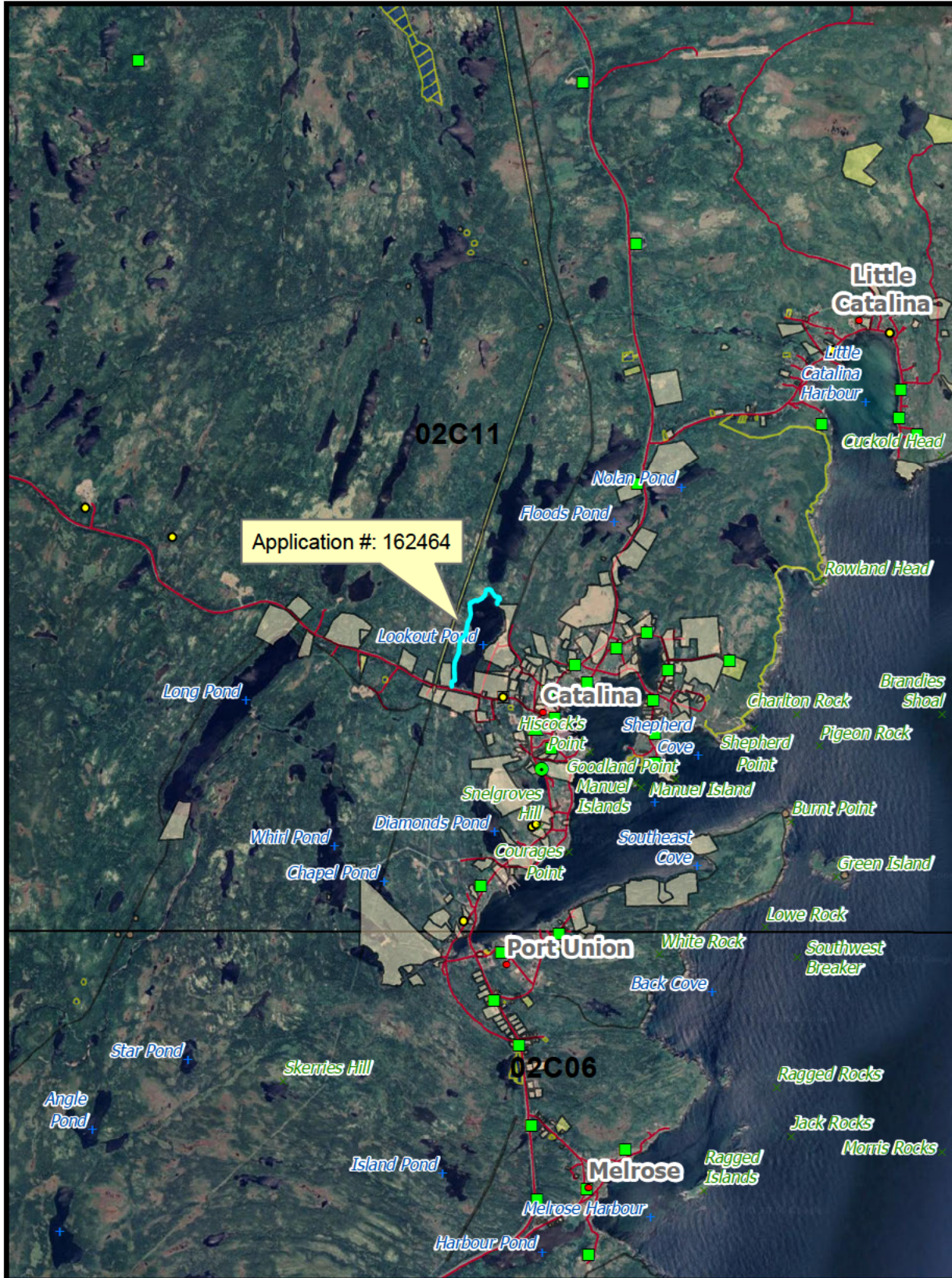
and, containing an area in square meters of approximately: 3,500sq.m.

Please see map included for the general location of the lands subject to the application.

Any person wishing to object to the application must file the objection in writing with reasons, within 30 days from the posting of this Notice of Intent, to the Minister of Fisheries, Forestry and Agriculture by mail or email to the nearest Regional Lands Office:

- Eastern Regional Lands Office, P.O. Box 8700, Howley Building, St. John's, NL, A1B 4J6
Email: EasternLandsOffice@gov.nl.ca
- Central Regional Lands Office, P.O. Box 2222, Gander, NL, A1V 2N9
Email: CentralLandsOffice@gov.nl.ca
- Western Regional Lands Office, P.O. Box 2006, Corner Brook, NL, A2H 6J8
Email: WesternRegionLands@gov.nl.ca
- Labrador Regional Lands Office, P.O. Box 3014, Station "B", Happy Valley-Goose Bay, NL, A0P 1E0
Email: LabradorLandsOffice@gov.nl.ca

Department of Fisheries, Forestry and Agriculture Crown Lands Division



NOTE TO USERS

The information on this map was compiled from land surveys registered in the Crown Lands Registry.

Since the Registry does not contain information on all land ownership within the Province, the information depicted cannot be considered complete.

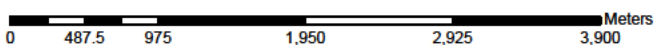
The boundary lines shown are intended to be used as an index to land titles issued by the Crown. The accuracy of the plot is not sufficient for measurement purposes and does not guarantee title.

Users finding any errors or omissions on this map sheet are asked to contact the Crown Lands Inquiries Line by telephone at 1-833-891-3249 or by email at CrownLandsInfo@gov.nl.ca.

Some titles may not be plotted due to Crown Lands volumes missing from the Crown Lands registry or not plotted due to insufficient survey information.

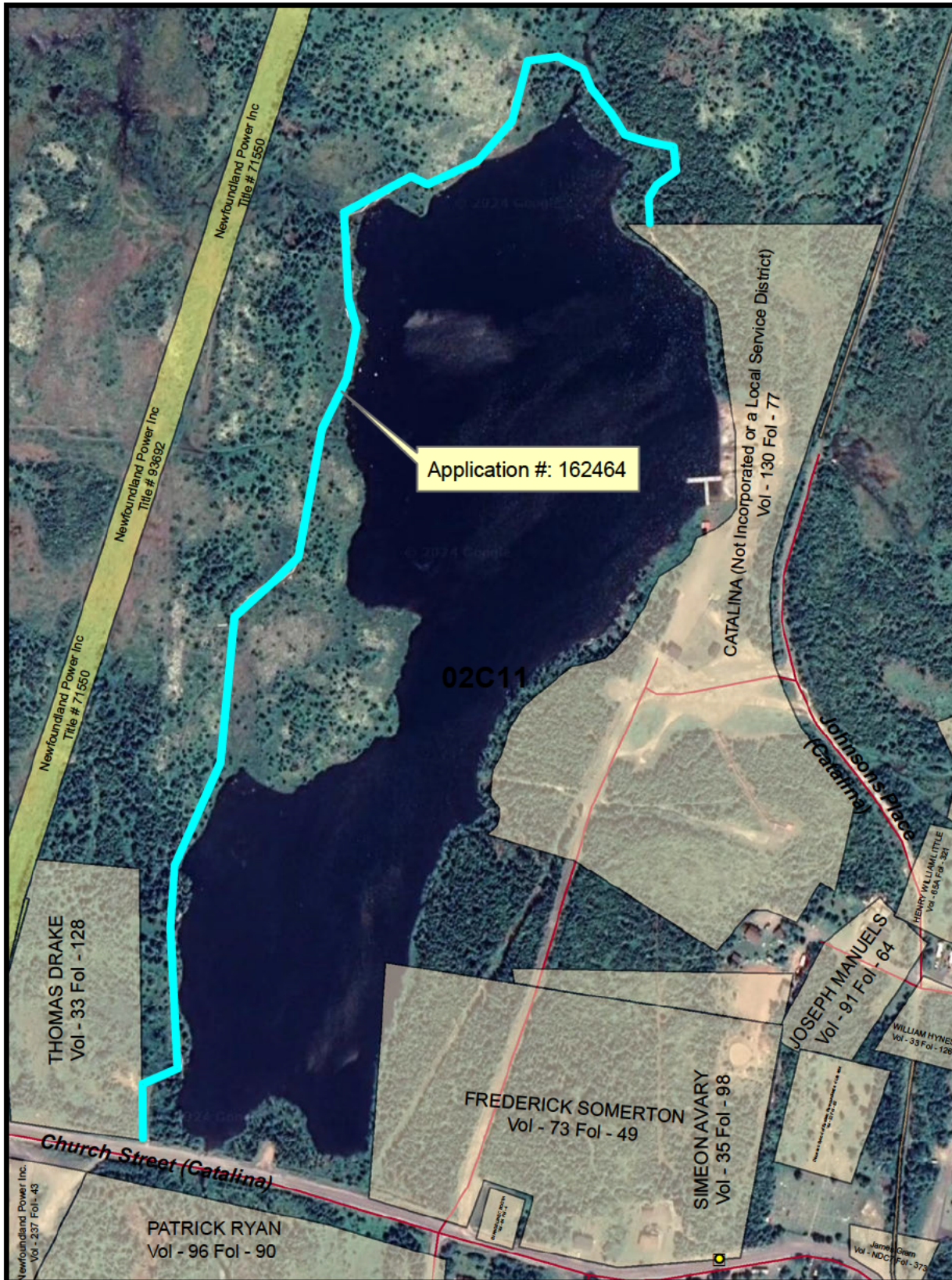
The User hereby indemnifies and saves harmless the Minister, his officers, employees and agents from and against all claims, demands, liabilities, actions or cause of actions alleging any loss, injury, damages and matter (including claims or demands for any violation of copyright or intellectual property) arising out of any missing or incomplete Crown Land titles, and the Minister, his or her officers, employees and agents shall not be liable for any loss of profits or contracts or any other loss of any kind as a result.

For inquiries please contact the Crown Lands Inquiries Line by telephone at 1-833-891-3249 or by email at CrownLandsInfo@gov.nl.ca. Or visit the nearest Regional Lands Office; http://www.flr.gov.nl.ca/departement/contact_lands.html



Scale 1:50,000
Compiled on April 1, 2024

Department of Fisheries, Forestry and Agriculture Crown Lands Division



Application #: 162464

NOTE TO USERS

The information on this map was compiled from land surveys registered in the Crown Lands Registry.

Since the Registry does not contain information on all land ownership within the Province, the information depicted cannot be considered complete.

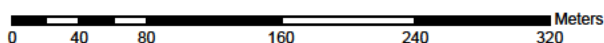
The boundary lines shown are intended to be used as an index to land titles issued by the Crown. The accuracy of the plot is not sufficient for measurement purposes and does not guarantee title.

Users finding any errors or omissions on this map sheet are asked to contact the Crown Lands Inquiries Line by telephone at 1-833-891-3249 or by email at CrownLandsInfo@gov.nl.ca.

Some titles may not be plotted due to Crown Lands volumes missing from the Crown Lands registry or not plotted due to insufficient survey information.

The User hereby indemnifies and saves harmless the Minister, his officers, employees and agents from and against all claims, demands, liabilities, actions or cause of actions alleging any loss, injury, damages and matter (including claims or demands for any violation of copyright or intellectual property) arising out of any missing or incomplete Crown Land titles, and the Minister, his or her officers, employees and agents shall not be liable for any loss of profits or contracts or any other loss of any kind as a result.

For inquiries please contact the Crown Lands Inquiries Line by telephone at 1-833-891-3249 or by email at CrownLandsInfo@gov.nl.ca. Or visit the nearest Regional Lands Office; http://www.flr.gov.nl.ca/departement/contact_lands.html



Scale 1:4,500
Compiled on April 1, 2024