

**Public Draw for Crown Land
Recreational Cottage Lots
Salmonier Cottage Area**

2018

**Legal Land Survey Plot Plans
Lots 136 - 184**

SCHEDULE "A"

Lot # 136, Salmonier Cottage Lots, Newfoundland and Labrador, Canada

BEGINNING at a point, said point having the following NAD83 coordinates in Zone 1, central meridian 53° west longitude, of the Transverse Mercator Projection as modified for the Province of Newfoundland and Labrador

N 5 236 231.167
E 281 799.203

with reference to Monument number 91008 with Co-ordinates N 5 235 159.049 metres and E 282 467.294 metres and Monument number 83G3458 with Co-ordinates N 5 236 107.125 metres and E 283 279.200 metres;

THENCE running along Lot # 137, south thirty seven degrees forty nine minutes forty six seconds west (S37°49'46"W) for a distance of seventy seven decimal one one nine (77.119) metres;

THENCE turning and running along the sinuosities of a fifteen (15) metre reservation for Third Little Gull Pond, north forty six degrees nineteen minutes forty five seconds west (N46°19'45"W) twenty two decimal three two six (22.326) metres; **thence** north sixty two degrees thirty seven minutes fifty two seconds west (N62°37'52"W) for a distance of twenty two decimal seven seven nine (22.779) metres;

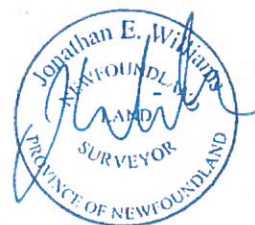
THENCE turning and running along Crown Land, north thirty nine degrees eleven minutes zero two seconds east (N39°11'02"E) for a distance of one hundred two decimal three four three (102.343) metres;

THENCE turning and running along a fifteen (15) metre road reservation, south thirty five degrees twenty one minutes thirty eight seconds east (S35°21'38"E) for a distance of nine decimal one five three (9.153) metres; **thence** thirty nine decimal zero six four (39.064) metres on the arc of a clockwise curve, having a radius of sixty five decimal five eight five (65.585) metres, a chord bearing of south twenty degrees twenty five minutes twenty three seconds east (S20°25'23"E) and a distance of thirty nine decimal three one two (39.312) metres, more or less, to the Point of Beginning.

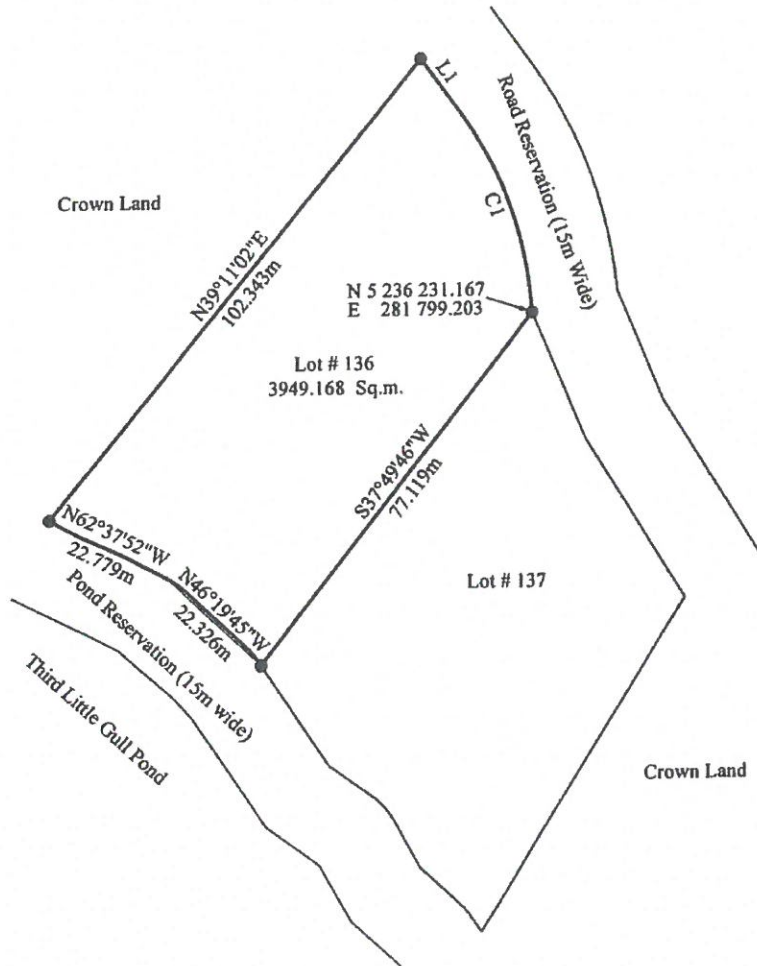
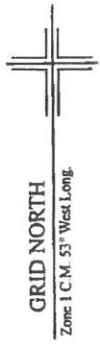
All bearings are Grid North NAD83 in Zone 1 of the Transverse Mercator Projection as modified for the Province of Newfoundland;

The above described piece or parcel of land contains an area of 3949.168 square metres, more or less, and is more particularly shown on the drawing hereto attached dated 24 07 2015.

This description and accompanying plan are integral parts necessary to adequately reflect the legal boundary of the subject property and therefor invalid if separated.



SCHEDULE "B"



LINE	BEARING	DISTANCE
L1	S35°21'38\"E	9.153m

CURVE	ARC	RADIUS	BEARING	DISTANCE
C1	39.064m	65.585m	S20°25'23\"E	39.312m

MONUMENTS USED:(NAD 83)

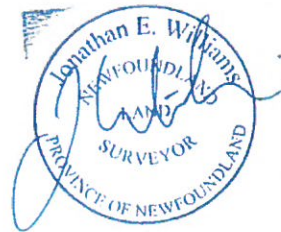
	NORTHING	EASTING
91008	5 235 159.049	282 467.294
83G3458	5 236 107.125	283 279.200

LEGEND:

- A. = anchor
- = capped iron pin
- o.h.w. = overhead wire
- P. = pole

NOTE: ALL DISTANCES ARE HORIZONTAL GROUND

DATE: July 24, 2015
PROJECT NO: 001-15-E



SCALE: 1:1000

SCHEDULE "A"

Lot # 141, Salmonier Cottage Lots, Newfoundland and Labrador, Canada

BEGINNING at a point, said point having the following NAD83 coordinates in Zone 1, central meridian 53° west longitude, of the Transverse Mercator Projection as modified for the Province of Newfoundland and Labrador

N 5 235 635.531
E 281 224.547

with reference to Monument number 91008 with Co-ordinates N 5 235 159.049 metres and E 282 467.294 metres and Monument number 83G3458 with Co-ordinates N 5 236 107.125 metres and E 283 279.200 metres;

THENCE running along Lot # 140, north eighty one degrees sixteen minutes twenty five seconds west (N81°16'25"W) for a distance of sixty eight decimal four one two (68.412) metres;

THENCE turning and running along the sinuosities of a fifteen (15) metre reservation for Little Gull Pond North twenty one degrees fifty minutes ten seconds west (N21°50'10"W) for a distance of eighty four decimal two eight nine (84.289) metres;

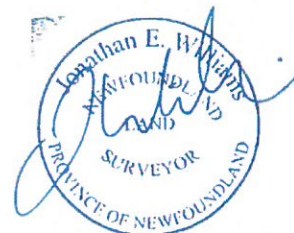
THENCE turning and running along Lot # 142, south sixty eight degrees zero two minutes fifty eight seconds east (S68°02'58"E) for a distance of eighty six decimal nine eight eight (86.988) metres;

THENCE turning and running along the western limit of a fifteen (15) metre road reservation, south eighteen degrees zero three minutes twenty one seconds east (S18°03'21"E) for a distance of fifty nine decimal zero one zero (59.010) metres, more or less, to the **Point of Beginning**.

All bearings are Grid North NAD83 in Zone 1 of the Transverse Mercator Projection as modified for the Province of Newfoundland;

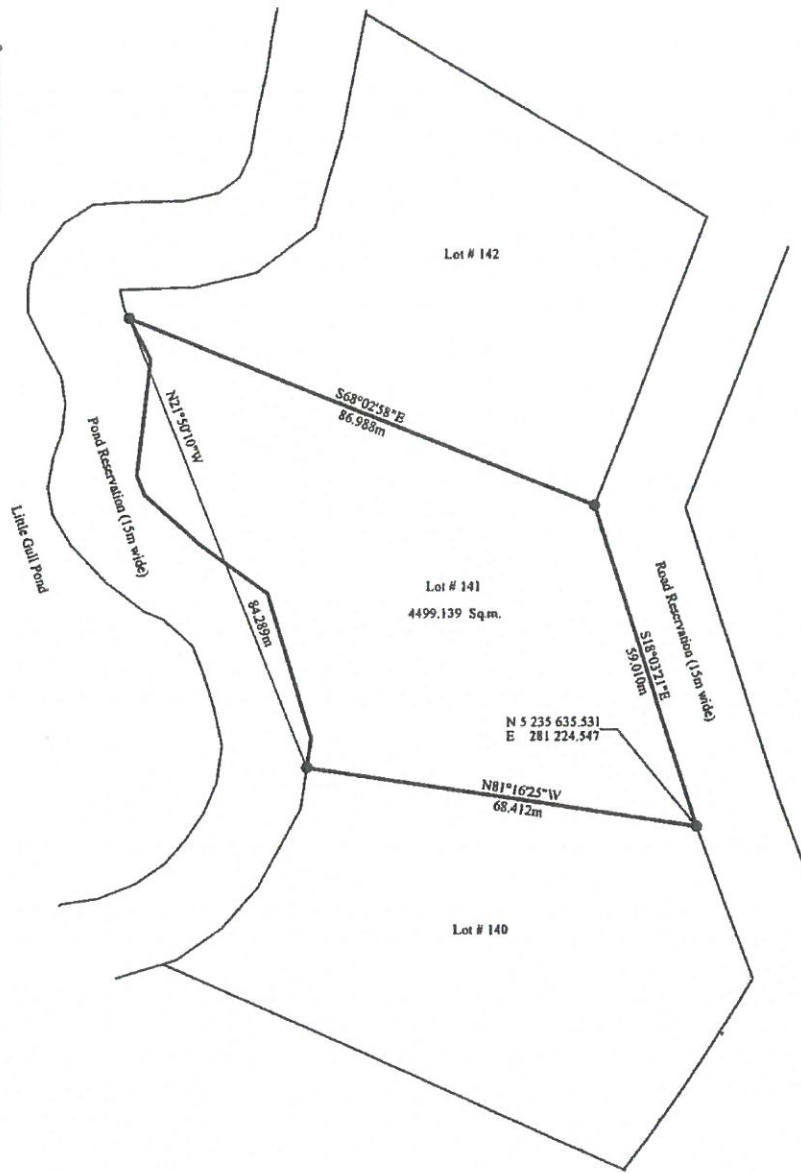
The above described piece or parcel of land contains an area of 4499.139 square metres, more or less, and is more particularly shown on the drawing hereto attached dated 24 07 2015.

This description and accompanying plan are integral parts necessary to adequately reflect the legal boundary of the subject property and therefor invalid if separated.



SCHEDULE "B"

GRID NORTH
Zone 1 C.M. 53° West Long.



MONUMENTS USED:(NAD 83)

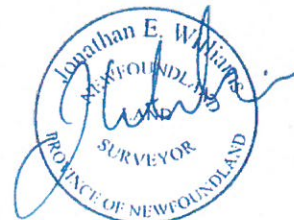
	NORTHING	EASTING
91008	5 235 159.049	282 467.294
83G3458	5 236 107.125	283 279.200

LEGEND:

- A. = anchor
- = capped iron pin
- o.h.w. = overhead wire
- P. = pole

NOTE: ALL DISTANCES ARE HORIZONTAL GROUND

DATE: July 24, 2015
PROJECT NO: 001-15-E



—SCALE : 1:1000—

SCHEDULE "A"

Lot # 147, Salmonier Cottage Lots, Newfoundland and Labrador, Canada

BEGINNING at a point, said point having the following NAD83 coordinates in Zone 1, central meridian 53° west longitude, of the Transverse Mercator Projection as modified for the Province of Newfoundland and Labrador

N 5 235 471.332
E 281 169.699

with reference to Monument number 91008 with Co-ordinates N 5 235 159.049 metres and E 282 467.294 metres and Monument number 83G3458 with Co-ordinates N 5 236 107.125 metres and E 283 279.200 metres;

THENCE running along Lot #148, south seventy degrees fifty two minutes zero eight seconds west (S70°52'08"W) for a distance of one hundred forty three decimal seven three three (143.733) metres;

THENCE turning and running along the sinuosities of a fifteen (15) metre reservation for Little Gull Pond, north twenty seven degrees twenty minutes twenty three west (N27°20'23"W) for a distance of eighteen decimal eight zero six (18.806) metres;

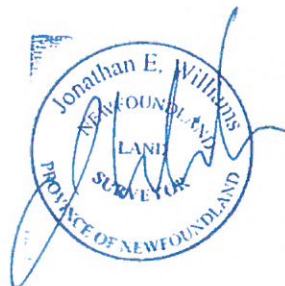
THENCE turning and running along Lot #146, north sixty three degrees fifty six minutes thirty two seconds east (N63°56'32"E) for a distance of one hundred thirty three decimal two seven zero (133.270) metres;

THENCE turning and running along the southwestern limit of a fifteen (15) metre road reservation, south sixty eight degrees thirty one minutes fifty two seconds east (S68°31'52"E) for a distance of twenty six decimal zero one two (26.012) metres; thence south zero one degrees thirty two minutes thirty seconds east (S01°32'30"E) for a distance of eighteen decimal six three two (18.632) metres; more or less, to the **Point of Beginning**.

All bearings are Grid North NAD83 in Zone 1 of the Transverse Mercator Projection as modified for the Province of Newfoundland;

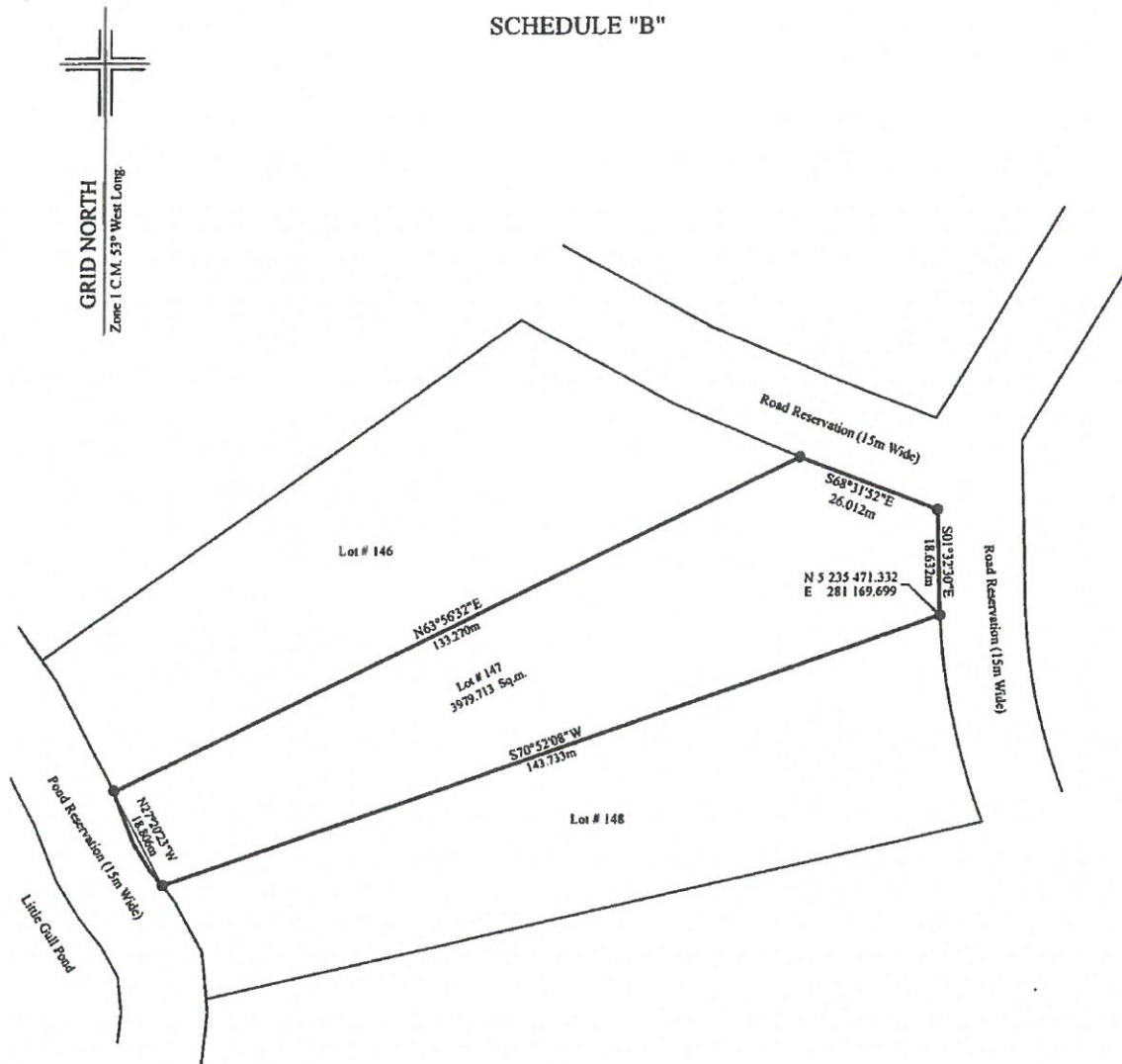
The above described piece or parcel of land contains an area of 3979.713 square metres, more or less, and is more particularly shown on the drawing hereto attached dated 24 07 2015.

This description and accompanying plan are integral parts necessary to adequately reflect the legal boundary of the subject property and therefor invalid if separated.



PROJECT# 001-15-E
DATED: 24 07 2015

SCHEDULE "B"




GRID NORTH
 Zone 1 C.M. 53° West Long.

MONUMENTS USED:(NAD 83)

	NORTHING	EASTING
91008	5 235 159.049	282 467.294
83G3458	5 236 107.125	283 279.200

LEGEND:

- A. = anchor
- = capped iron pin
- o.h.w. = overhead wire
- P. = pole

NOTE: ALL DISTANCES ARE HORIZONTAL GROUND

DATE: July 24, 2015
PROJECT NO: 001-15-E



—SCALE : 1:1000—

SCHEDULE "A"

Lot # 148, Salmonier Cottage Lots, Newfoundland and Labrador, Canada

BEGINNING at a point, said point having the following NAD83 coordinates in Zone 1, central meridian 53° west longitude, of the Transverse Mercator Projection as modified for the Province of Newfoundland and Labrador

N 5 235 434.817
E 281 177.263

with reference to Monument number 91008 with Co-ordinates N 5 235 159.049 metres and E 282 467.294 metres and Monument number 83G3458 with Co-ordinates N 5 236 107.125 metres and E 283 279.200 metres;

THENCE running along Lot # 149, south seventy seven degrees twelve minutes thirty three seconds west (S77°12'33"W) for a distance of one hundred thirty eight decimal nine nine eight (138.998) metres;

THENCE turning and running along the sinuosities of a fifteen (15) metre reservation for Little Gull Pond, north twenty one degrees zero nine minutes fifteen seconds west (N21°09'15"W) for a distance of twenty one decimal six four one (21.641) metres;

THENCE turning and running along Lot # 147, north seventy degrees fifty two minutes zero eight seconds east (N70°52'08"E) for a distance of one hundred forty three decimal seven three three (143.733) metres;

THENCE turning and running along the southwestern limits of a fifteen (15) metre road reservation, thirty seven decimal four five two (37.452) metres along the arc of a counterclockwise curve, having a radius of one hundred sixteen decimal two seven three (116.273) metres, a chord bearing of south eleven degrees forty two minutes zero eight seconds east (S11°42'08"E) and a chord distance of thirty seven decimal two nine zero (37.290) metres, more or less, to the Point of Beginning.

All bearings are Grid North NAD83 in Zone 1 of the Transverse Mercator Projection as modified for the Province of Newfoundland;

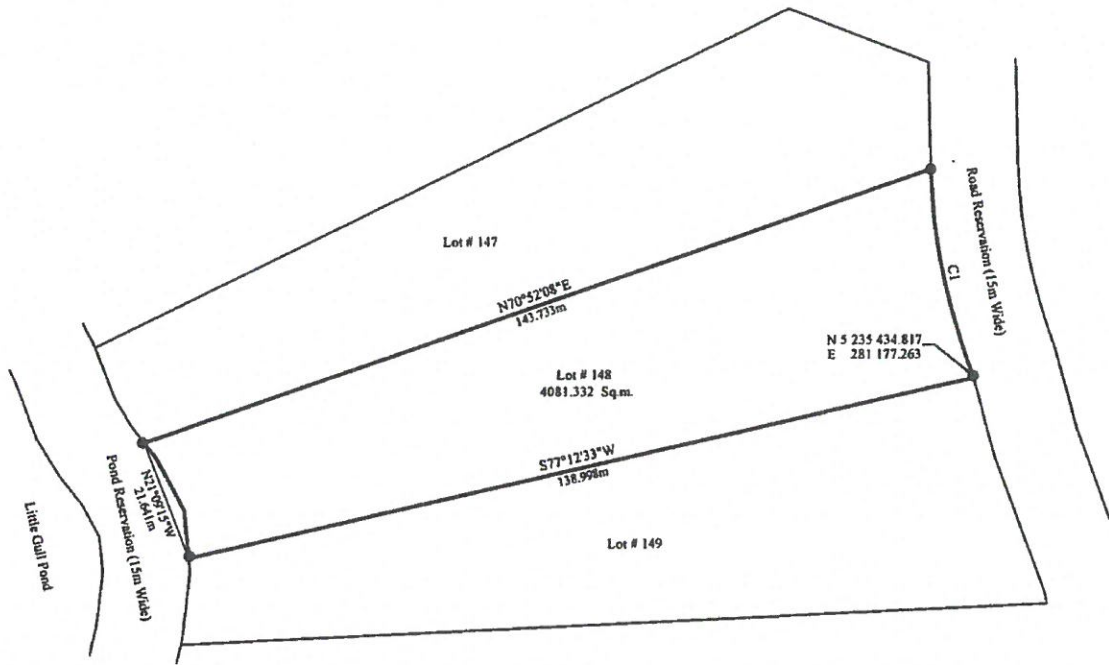
The above described piece or parcel of land contains an area of 4081.332 square metres, more or less, and is more particularly shown on the drawing hereto attached dated 24 07 2015.

This description and accompanying plan are integral parts necessary to adequately reflect the legal boundary of the subject property and therefor invalid if separated.



PROJECT# 001-15-E
DATED: 24 07 2015

SCHEDULE "B"



CURVE	ARC	RADIUS	BEARING	DISTANCE
CI	37.432m	116.273m	S11°42'08\"/>	

MONUMENTS USED:(NAD 83)

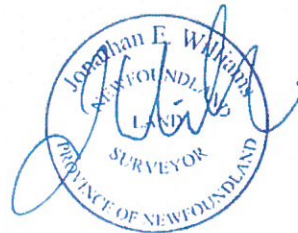
	NORTHING	EASTING
91008	5 235 159.049	282 467.294
83G3458	5 236 107.125	283 279.200

LEGEND:

- A. = anchor
- = capped iron pin
- o.h.w. = overhead wire
- P. = pole

NOTE: ALL DISTANCES ARE HORIZONTAL GROUND

DATE: July 24, 2015
PROJECT NO: 001-15-E



SCALE: 1:1000

SCHEDULE "A"

Lot # 152, Salmonier Cottage Lots, Newfoundland and Labrador, Canada

BEGINNING at a point, said point having the following NAD83 coordinates in Zone 1, central meridian 53° west longitude, of the Transverse Mercator Projection as modified for the Province of Newfoundland and Labrador

N 5 235 322.810
E 281 201.828

with reference to Monument number 91008 with Co-ordinates N 5 235 159.049 metres and E 282 467.294 metres and Monument number 83G3458 with Co-ordinates N 5 236 107.125 metres and E 283 279.200 metres;

THENCE running along the southwestern limit of a fifteen (15) metre road reservation, forty five decimal zero eight four (45.084) along the arc of a clock-wise curve having a radius of five hundred eight decimal eight three one (508.831), a cord bearing of north zero four degrees forty six minutes forty seconds east (S04°46'40"W) and a cord distance of forty five decimal zero six nine (45.069);

THENCE turning and running along Crown Land north eighty three degrees fifty nine minutes twenty nine seconds west (N83°59'29"W) for a distance of eighty two decimal two two two (82.222) metres;

THENCE turning and running along Crown Land north zero seven degrees fifty one minutes zero five seconds east (N07°51'05"E) for a distance of fifty two decimal seven four two (52.742) metres;

THENCE turning and running along Lot # 151, south seventy eight degrees twenty nine minutes forty seconds east (S78°29'40"E) for a distance of seventy nine decimal nine two five (79.925) metres, more or less, to the **Point of Beginning**.

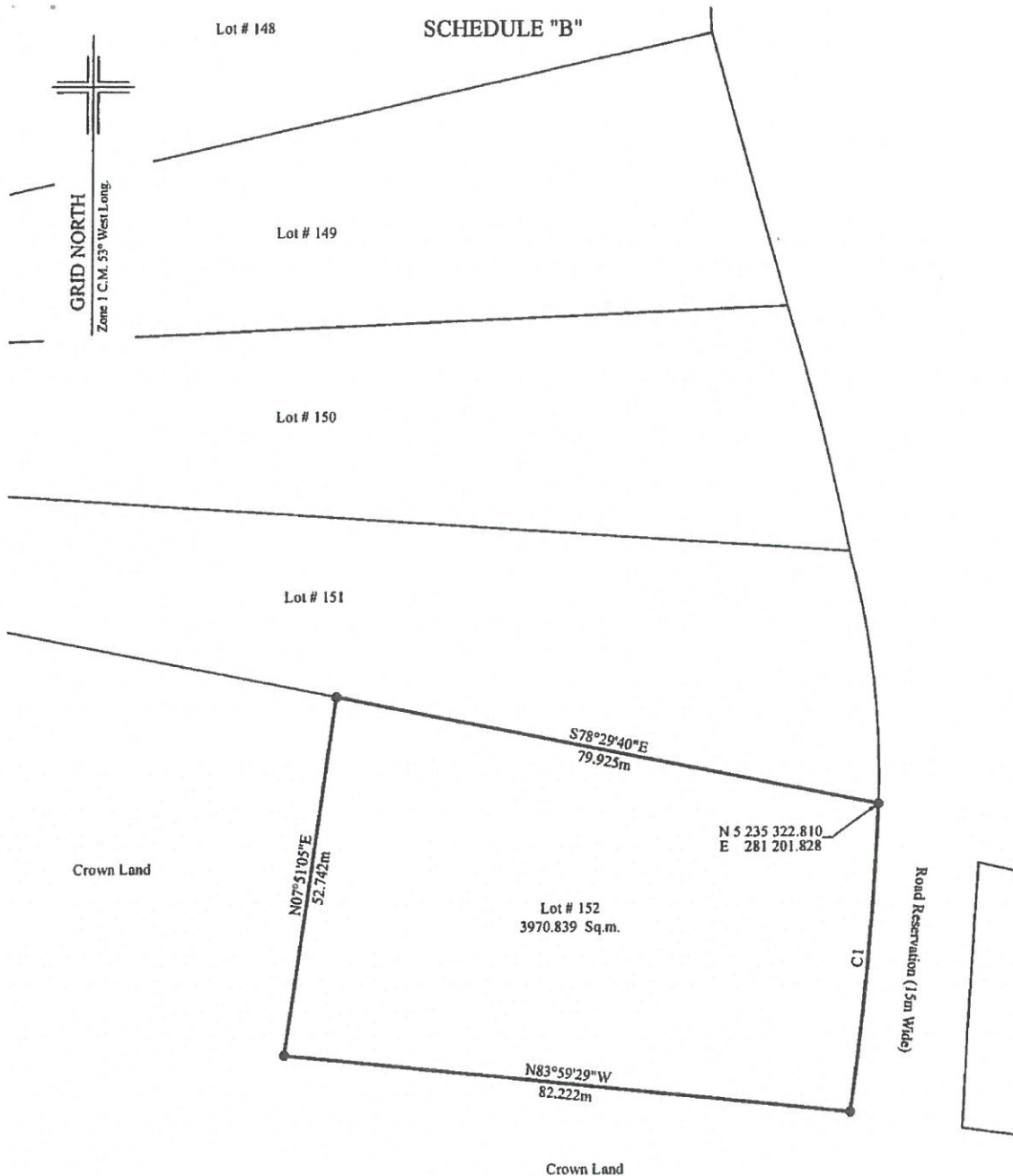
All bearings are Grid North NAD83 in Zone 1 of the Transverse Mercator Projection as modified for the Province of Newfoundland;

The above described piece or parcel of land contains an area of 3970.839 square metres, more or less, and is more particularly shown on the drawing hereto attached dated 24 07 2015.

This description and accompanying plan are integral parts necessary to adequately reflect the legal boundary of the subject property and therefor invalid if separated.



PROJECT# 001-16-E
DATED: 24 07 2015



CURVE	ARC	RADIUS	BEARING	DISTANCE
C1	45.084m	508.831m	S04°46'40"W	45.069m

MONUMENTS USED:(NAD 83)

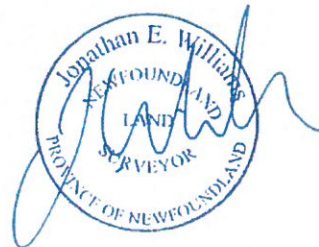
	NORTHING	EASTING
91008	5 235 159.049	282 467.294
83G3458	5 236 107.125	283 279.200

LEGEND:

- A. = anchor
- = capped iron pin
- o.h.w. = overhead wire
- P. = pole

NOTE: ALL DISTANCES ARE HORIZONTAL GROUND

DATE: July 24, 2015
PROJECT NO: 001-15-E



—SCALE : 1:750 —

SCHEDULE "A"

Lot # 154, Salmonier Cottage Lots, Newfoundland and Labrador, Canada

BEGINNING at a point, said point having the following NAD83 coordinates in Zone 1, central meridian 53° west longitude, of the Transverse Mercator Projection as modified for the Province of Newfoundland and Labrador

N 5 235 194.030
E 281 213.791

with reference to Monument number 91008 with Co-ordinates N 5 235 159.049 metres and E 282 467.294 metres and Monument number 83G3458 with Co-ordinates N 5 236 107.125 metres and E 283 279.200 metres;

THENCE running along Lot #155, south eighty five degrees fifty seven minutes seventeen seconds west (S85°57'17"W) for a distance of ninety four decimal three zero six (94.306)

THENCE turning and running along Crown Land, north zero eight degrees fifty five minutes forty five seconds west (N08°55'45"W) for a distance of forty nine decimal three four four (49.344) metres;

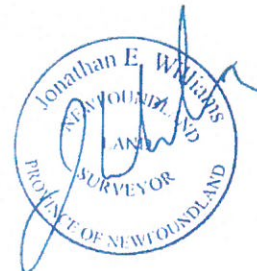
THENCE turning and running along Crown Land, south eighty-nine degrees twenty-four minutes thirty-eight seconds east (S89°24'38"E) for a distance of eighty eight decimal five zero four (88.504) metres;

THENCE turning and running along the southwestern limit of a fifteen (15) metre road reservation, south fourteen degrees thirty minutes twenty three seconds east (S14°30'23"E) for a distance of thirty decimal four four seven (30.447) metres; **thence** south twenty five degrees thirty four minutes forty four seconds east (S25°34'44"E) for a distance of twelve decimal nine seven nine (12.979) metres, more or less, to the **Point of Beginning**.

All bearings are Grid North NAD83 in Zone 1 of the Transverse Mercator Projection as modified for the Province of Newfoundland;

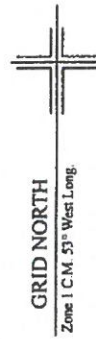
The above described piece or parcel of land contains an area of 4096.612 square metres, more or less, and is more particularly shown on the drawing hereto attached dated 24 07 2015.

This description and accompanying plan are integral parts necessary to adequately reflect the legal boundary of the subject property and therefor invalid if separated.

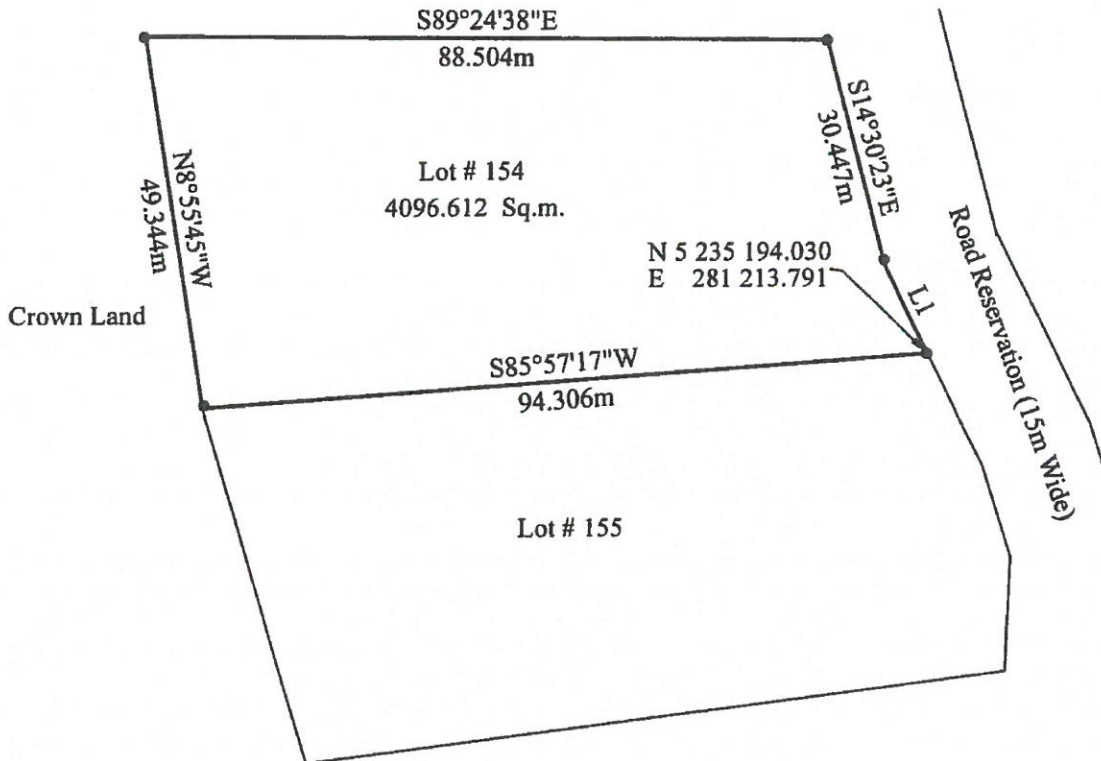


PROJECT# 001-15-E
DATED: 24 07 2015

SCHEDULE "B"



Crown Land



LINE	BEARING	DISTANCE
L1	S25°34'44\"E	12.979m

MONUMENTS USED:(NAD 83)

	NORTHING	EASTING
91008	5 235 159.049	282 467.294
83G3458	5 236 107.125	283 279.200

LEGEND:

- A. = anchor
- = capped iron pin
- o.h.w. = overhead wire
- P. = pole

NOTE: ALL DISTANCES ARE HORIZONTAL GROUND

DATE: July 24, 2015
PROJECT NO: 001-15-E



SCALE : 1:750

SCHEDULE "A"

Lot # 155, Salmonier Cottage Lots, Newfoundland and Labrador, Canada

BEGINNING at a point, said point having the following NAD83 coordinates in Zone 1, central meridian 53° west longitude, of the Transverse Mercator Projection as modified for the Province of Newfoundland and Labrador

N 5 235 194.030
E 281 213.791

with reference to Monument number 91008 with Co-ordinates N 5 235 159.049 metres and E 282 467.294 metres and Monument number 83G3458 with Co-ordinates N 5 236 107.125 metres and E 283 279.200 metres;

THENCE running along the southwestern limit of a fifteen (15) metre road reservation, forty three decimal six seven six (43.676) metres, along the arc of a clockwise curve having a radius of sixty three decimal eight four three (63.843), a cord bearing of south fourteen degrees zero zero minutes zero zero seconds east (S14°00'00"E) and a chord distance of forty two decimal eight two nine (42.829) metres;

THENCE turning and running along Lot # 156, south eighty two degrees thirty seven minutes forty seven seconds west (S82°37'47"W) for a distance of ninety one decimal three zero six (91.306) metres;

THENCE turning and running along Crown Land, north sixteen degrees thirty four minutes fifty five seconds west (N16°34'55"W) for a distance of forty eight decimal six three nine (48.639) metres;

THENCE turning and running along Lot # 154, north eighty five degrees fifty seven minutes seventeen seconds east (N85°57'17"E) for a distance ninety four decimal three zero six (94.306) metres; more or less, to the Point of Beginning.

All bearings are Grid North NAD83 in Zone 1 of the Transverse Mercator Projection as modified for the Province of Newfoundland;

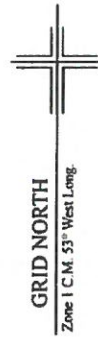
The above described piece or parcel of land contains an area of 4287.217 square metres, more or less, and is more particularly shown on the drawing hereto attached dated 24 07 2015.

This description and accompanying plan are integral parts necessary to adequately reflect the legal boundary of the subject property and therefor invalid if separated.



PROJECT# 001-15-E
DATED: 24 07 2015

SCHEDULE "B"



CURVE	ARC	RADIUS	BEARING	DISTANCE
CI	43.676m	63.843m	S14°00'00"E	42.829m

MONUMENTS USED:(NAD 83)

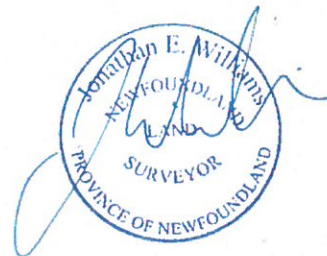
	NORTHING	EASTING
91008	5 235 159.049	282 467.294
83G3458	5 236 107.125	283 279.200

LEGEND:

- A. = anchor
- = capped iron pin
- o.h.w. = overhead wire
- P. = pole

NOTE: ALL DISTANCES ARE HORIZONTAL GROUND

DATE: July 24, 2015
PROJECT NO: 001-15-E



SCALE: 1:1000

SCHEDULE "A"

Lot # 156, Salmonier Cottage Lots, Newfoundland and Labrador, Canada

BEGINNING at a point, said point having the following NAD83 coordinates in Zone 1, central meridian 53° west longitude, of the Transverse Mercator Projection as modified for the Province of Newfoundland and Labrador

N 5 235 109.877
E 281 223.991

with reference to Monument number 91008 with Co-ordinates N 5 235 159.049 metres and E 282 467.294 metres and Monument number 83G3458 with Co-ordinates N 5 236 107.125 metres and E 283 279.200 metres;

THENCE running along Lot #157, south eighty degrees forty eight minutes fifty one seconds west (S80°48'51"W) for a distance of ninety decimal three eight seven (90.387) metres;

THENCE turning and running along Crown Land, north zero one degrees twenty eight minutes zero nine seconds west (N01°28'09"W) for a distance of forty five decimal three two eight (45.328) metres;

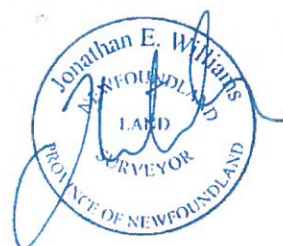
THENCE turning and running along Lot # 155, north eighty two degrees thirty seven minutes forty seven seconds east (N82°37'47"E) for a distance of ninety one decimal three zero six (91.306) metres;

THENCE turning and running along the southwestern limit of a fifteen (15) metre road reservation, south zero degrees thirteen minutes zero zero seconds west (S00°13'00"W) for a distance forty two decimal five nine seven (42.597) metres; more or less, to the **Point of Beginning**.

All bearings are Grid North NAD83 in Zone 1 of the Transverse Mercator Projection as modified for the Province of Newfoundland;

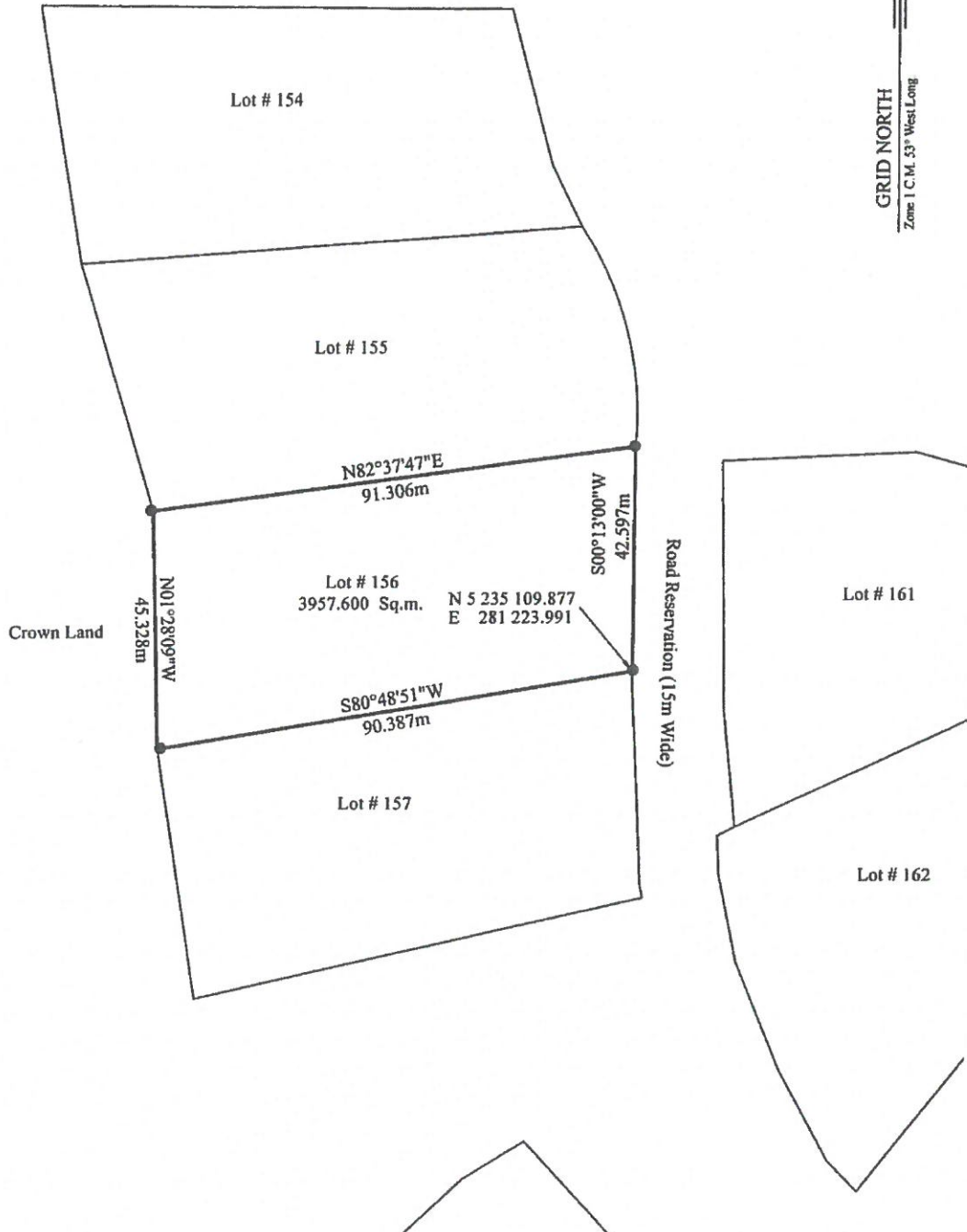
The above described piece or parcel of land contains an area of 3957.600 square metres, more or less, and is more particularly shown on the drawing hereto attached dated 24 07 2015.

This description and accompanying plan are integral parts necessary to adequately reflect the legal boundary of the subject property and therefor invalid if separated.



PROJECT# 001-15-E
DATED: 24 07 2015

SCHEDULE "B"



MONUMENTS USED:(NAD 83)

	NORTHING	EASTING
91008	5 235 159.049	282 467.294
83G3458	5 236 107.125	283 279.200

LEGEND:

- A. = anchor
- = capped iron pin
- o.h.w. = overhead wire
- P. = pole

NOTE: ALL DISTANCES ARE HORIZONTAL GROUND

DATE: July 24, 2015
PROJECT NO: 001-15-E



SCALE : 1:1000

SCHEDULE "A"

Lot # 157, Salmonier Cottage Lots, Newfoundland and Labrador, Canada

BEGINNING at a point, said point having the following NAD83 coordinates in Zone 1, central meridian 53° west longitude, of the Transverse Mercator Projection as modified for the Province of Newfoundland and Labrador

N 5 235 109.877
E 281 223.991

with reference to Monument number 91008 with Co-ordinates N 5 235 159.049 metres and E 282 467.294 metres and Monument number 83G3458 with Co-ordinates N 5 236 107.125 metres and E 283 279.200 metres;

THENCE running along the western limit of a (15) metre road reservation, forty three decimal zero six eight (43.068) metres on the arc of a counter clockwise curve having a radius of four hundred eighty eight decimal eight six one (488.861) metres, a chord bearing of south zero three degrees zero two minutes eighteen seconds east (S03°02'18"E) and a chord distance of forty three decimal zero five four (43.054) metres;

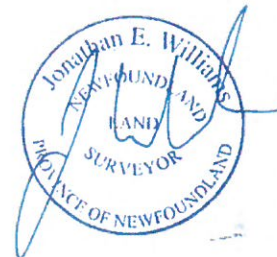
THENCE turning and running along Crown Land, south seventy seven degrees nineteen minutes forty one seconds west (S77°19'41"W) for a distance of eighty six decimal zero eight eight (86.088) metres; thence north zero nine degrees zero zero minutes thirteen seconds west (N09°00'13"W) for a distance of forty eight decimal zero four two (48.042) metres;

THENCE turning and running along Lot # 156, north eighty degrees forty eight minutes fifty one seconds east (N80°48'51"E) for a distance of ninety decimal three eight seven (90.387) metres, more or less, to the **Point of Beginning**

All bearings are Grid North NAD83 in Zone 1 of the Transverse Mercator Projection as modified for the Province of Newfoundland;

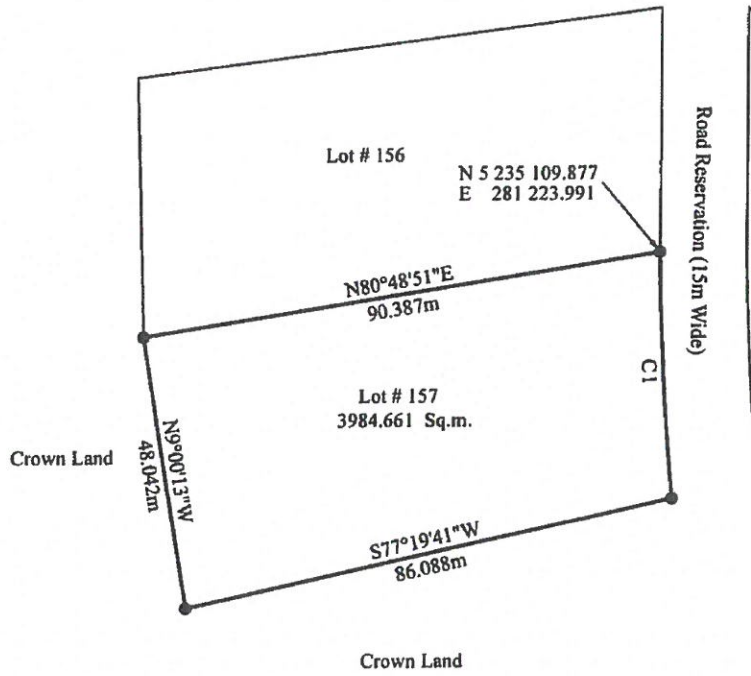
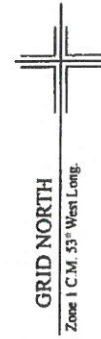
The above described piece or parcel of land contains an area of 3984.661 square metres, more or less, and is more particularly shown on the drawing hereto attached dated 24 07 2015.

This description and accompanying plan are integral parts necessary to adequately reflect the legal boundary of the subject property and therefore invalid if separated.



PROJECT# 001-15-E
DATED: 24 07 2015

SCHEDULE "B"



CURVE	ARC	RADIUS	BEARING	DISTANCE
C1	43.068m	488.861m	S03°02'18"E	43.054m

MONUMENTS USED:(NAD 83)

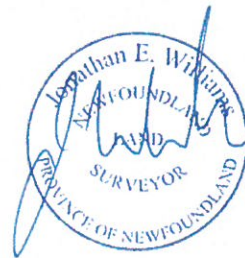
	NORTHING	EASTING
91008	5 235 159.049	282 467.294
83G3458	5 236 107.125	283 279.200

LEGEND:

- A. = anchor
- = capped iron pin
- o.h.w. = overhead wire
- P. = pole

NOTE: ALL DISTANCES ARE HORIZONTAL GROUND

DATE: July 24, 2015
PROJECT NO: 001-15-E



SCALE: 1:1000

SCHEDULE "A"

Lot # 161, Salmonier Cottage Lots, Newfoundland and Labrador, Canada

BEGINNING at a point, said point having the following NAD83 coordinates in Zone 1, central meridian 53° west longitude, of the Transverse Mercator Projection as modified for the Province of Newfoundland and Labrador

N 5 235 080.339
E 281 243.637

with reference to Monument number 91008 with Co-ordinates N 5 235 159.049 metres and E 282 467.294 metres and Monument number 83G3458 with Co-ordinates N 5 236 107.125 metres and E 283 279.200 metres;

THENCE running along the eastern limit of a (15) metre road reservation, sixty nine decimal five one six (69.516) metres on the arc of a clockwise curve having a radius of seven hundred thirty two decimal five eight one (732.581) metres, a chord bearing of north zero two degrees twenty two minutes forty nine seconds west (N02°22'49"W) and a chord distance of sixty nine decimal four nine zero (69.490) metres;

THENCE turning and running along Crown Land, north eighty seven degrees thirty seven minutes twenty three seconds east (N87°37'23"E) for a distance of thirty six decimal five nine seven (36.597) metres;

THENCE turning and running along the sinuosity's of a fifteen (15) metre reservation for Seventh Little Gull Pond, south sixty seven degrees ten minutes forty seconds east (S67°10'40"E) for a distance of sixty eight decimal zero four five (68.045) meters;

THENCE turning and running along Lot # 162, south sixty five degrees eleven minutes thirty eight seconds west (S65°11'38"W) for a distance of one hundred six decimal one nine seven (106.197) metres, more or less, to the **Point of Beginning**

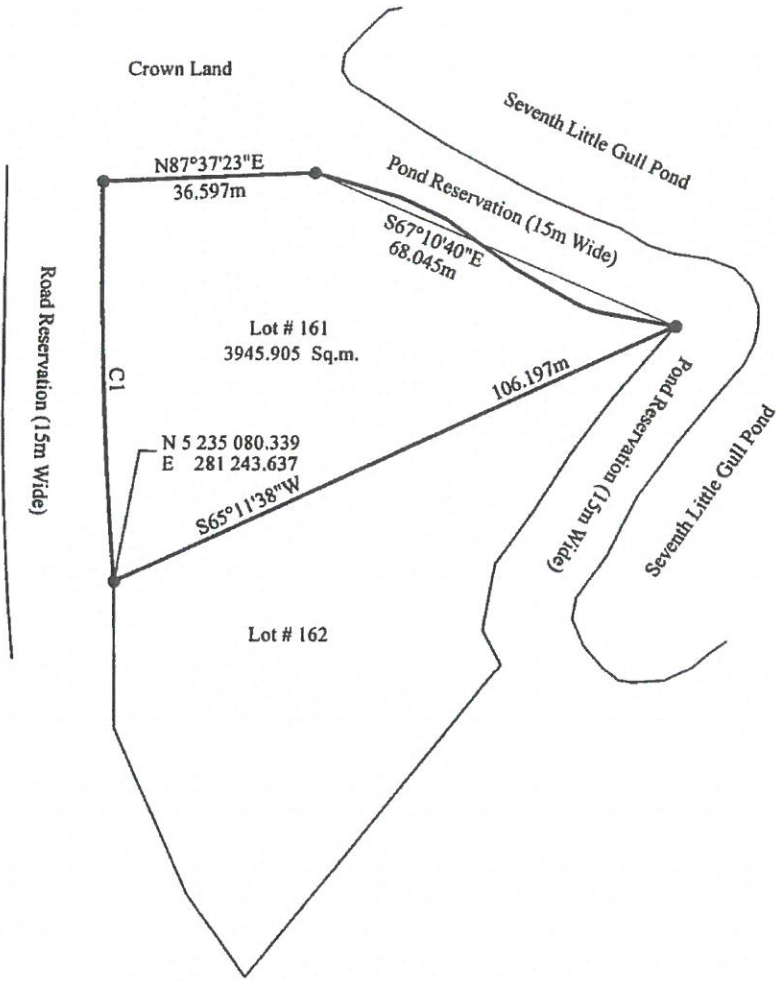
All bearings are Grid North NAD83 in Zone 1 of the Transverse Mercator Projection as modified for the Province of Newfoundland;

The above described piece or parcel of land contains an area of 3945.905 square metres, more or less, and is more particularly shown on the drawing hereto attached dated 24 07 2015.

This description and accompanying plan are integral parts necessary to adequately reflect the legal boundary of the subject property and therefor invalid if separated.



SCHEDULE "B"



CURVE	ARC	RADIUS	BEARING	DISTANCE
C1	69.516m	732.581m	N02°22'49"W	69.490m

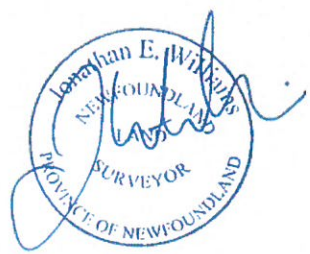
MONUMENTS USED:(NAD 83)

	NORTHING	EASTING
91008	5 235 159.049	282 467.294
83G3458	5 236 107.125	283 279.200

- LEGEND:**
 A. = anchor
 ● = capped iron pin
 o.h.w. = overhead wire
 P. = pole

NOTE: ALL DISTANCES ARE HORIZONTAL GROUND

DATE: July 24, 2015
 PROJECT NO: 001-15-E



SCALE : 1:1000

SCHEDULE "A"

Lot # 162, Salmonier Cottage Lots, Newfoundland and Labrador, Canada

BEGINNING at a point, said point having the following NAD83 coordinates in Zone 1, central meridian 53° west longitude, of the Transverse Mercator Projection as modified for the Province of Newfoundland and Labrador

N 5 235 080.339
E 281 243.637

with reference to Monument number 91008 with Co-ordinates N 5 235 159.049 metres and E 282 467.294 metres and Monument number 83G3458 with Co-ordinates N 5 236 107.125 metres and E 283 279.200 metres;

THENCE running along Lot # 161 north sixty five degrees eleven minutes thirty eight seconds east (N65°11'38"E) for a distance of one hundred six decimal one nine seven (106.197) metres;

THENCE turning and running along the sinuosity's of a fifteen (15) metre reservation for Seventh Little Gull Pond, south twenty six degrees twenty six minutes fifty nine seconds west (S26°26'59"W) for a distance of sixty five decimal nine eight four (65.984) metres;

THENCE turning and running along Crown Land south thirty eight degrees twenty minutes fifty six seconds west (S38°20'56"W) for a distance of sixty nine decimal five five seven (69.557) metres;

THENCE turning and running along northeastern limit of a fifteen (15) metres Road Reservation north thirty five degrees thirty three minutes twenty eight seconds west (N35°33'28"W) for a distance of seventeen decimal six nine seven (17.697) metres; **thence** north twenty four degrees fourteen minutes zero five seconds west (N24°14'05"W) for a distance of thirty one decimal eight nine seven (31.897) metres; **thence** north zero one degrees zero two minutes forty four seconds west (N01°02'44"W) for distance of twenty five decimal five nine three (25.593) metres, more or less, to the **Point of Beginning**

All bearings are Grid North NAD83 in Zone 1 of the Transverse Mercator Projection as modified for the Province of Newfoundland;

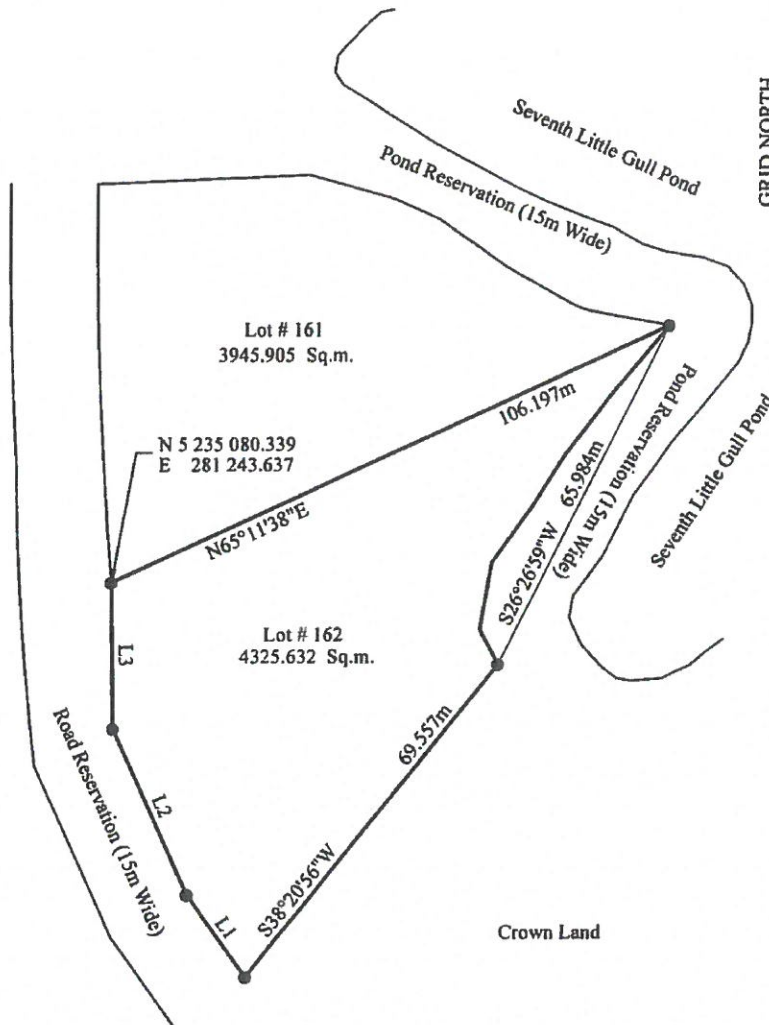
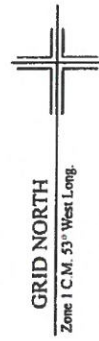
The above described piece or parcel of land contains an area of 4325.632 square metres, more or less, and is more particularly shown on the drawing hereto attached dated 24 07 2015.

This description and accompanying plan are integral parts necessary to adequately reflect the legal boundary of the subject property and therefor invalid if separated.



PROJECT# 001-15-E
DATED: 24 07 2015

SCHEDULE "B"



LINE	BEARING	DISTANCE
L1	N35°33'28"W	17.697m
L2	N24°14'05"W	31.897m
L3	N01°02'44"W	25.593m

MONUMENTS USED:(NAD 83)

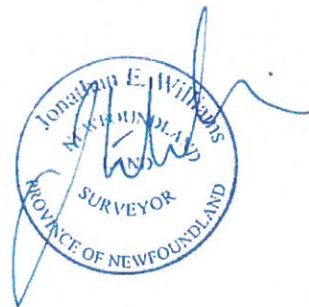
	NORTHING	EASTING
91008	5 235 159.049	282 467.294
83G3458	5 236 107.125	283 279.200

LEGEND:

- A. = anchor
- = capped iron pin
- o.h.w. = overhead wire
- P. = pole

NOTE: ALL DISTANCES ARE HORIZONTAL GROUND

DATE: July 24, 2015
PROJECT NO: 001-15-E



SCALE : 1:1000

SCHEDULE "A"

Lot # 163, Salmonier Cottage Lots, Newfoundland and Labrador, Canada

BEGINNING at a point, said point having the following NAD83 coordinates in Zone 1, central meridian 53° west longitude, of the Transverse Mercator Projection as modified for the Province of Newfoundland and Labrador

N 5 234 955.291
E 281 377.731

with reference to Monument number 91008 with Co-ordinates N 5 235 159.049 metres and E 282 467.294 metres and Monument number 83G3458 with Co-ordinates N 5 236 107.125 metres and E 283 279.200 metres;

THENCE running along the northern limit of a fifteen (15) metre Road Reservation, forty four decimal six nine nine (44.699) metres on the arc of a clockwise curve having a radius of three hundred thirty five decimal one two seven (335.127) metres, a chord bearing of north eighty five degrees twenty five minutes zero four seconds west (N85°25'04"W) and chord distance of forty four decimal six six six (44.666) metres;

THENCE turning and running along Crown Land north twenty two degrees fifteen minutes zero four seconds east (N22°15'04"E) for a distance of one hundred six decimal zero zero nine (106.009) metres;

THENCE turning and running along the sinuosity's of a fifteen (15) metre Reservation for Seventh Little Gull Pond, south sixty nine degrees eleven minutes twenty nine seconds east (S69°11'29"E) for a distance of thirty seven decimal two three six (37.236) meters;

THENCE turning and running along Lot # 164 south eighteen degrees fifty eight minutes fifty five seconds west (S18°58'55"W) for distance ninety three decimal five four two (93.542) metres, more or less, to the **Point of Beginning**

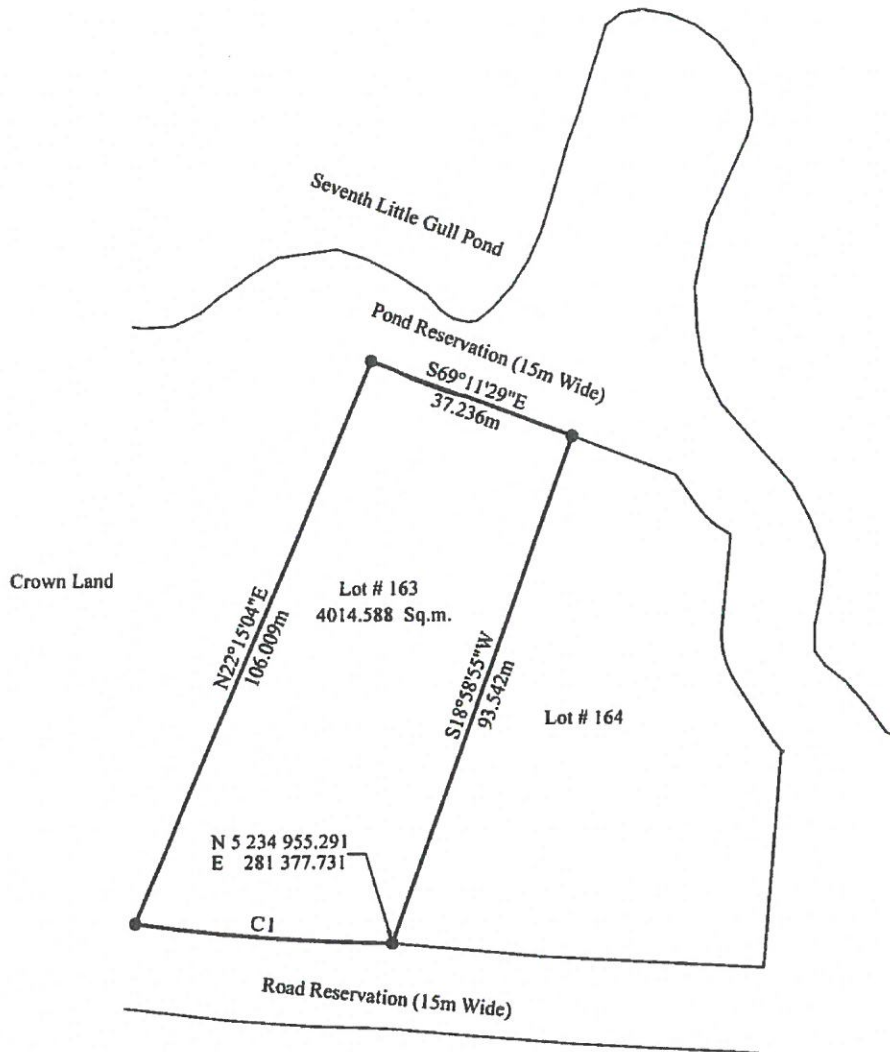
All bearings are Grid North NAD83 in Zone 1 of the Transverse Mercator Projection as modified for the Province of Newfoundland;

The above described piece or parcel of land contains an area of 4014.588 square metres, more or less, and is more particularly shown on the drawing hereto attached dated 24 07 2015.

This description and accompanying plan are integral parts necessary to adequately reflect the legal boundary of the subject property and therefor invalid if separated.



SCHEDULE "B"



CURVE	ARC	RADIUS	BEARING	DISTANCE
CI	44.699m	335.127m	N85°25'04\"W	44.666m

MONUMENTS USED:(NAD 83)

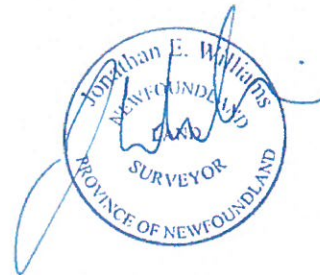
	NORTHING	EASTING
91008	5 235 159.049	282 467.294
83G3458	5 236 107.125	283 279.200

LEGEND:

- A. = anchor
- = capped iron pin
- o.h.w. = overhead wire
- P. = pole

NOTE: ALL DISTANCES ARE HORIZONTAL GROUND

DATE: July 24, 2015
PROJECT NO: 001-15-E



SCALE: 1:1000

SCHEDULE "A"

Lot # 164, Salmonier Cottage Lots, Newfoundland and Labrador, Canada

BEGINNING at a point, said point having the following NAD83 coordinates in Zone 1, central meridian 53° west longitude, of the Transverse Mercator Projection as modified for the Province of Newfoundland and Labrador

N 5 234 955.291
E 281 377.731

with reference to Monument number 91008 with Co-ordinates N 5 235 159.049 metres and E 282 467.294 metres and Monument number 83G3458 with Co-ordinates N 5 236 107.125 metres and E 283 279.200 metres;

THENCE running along the southwestern limit of Lot #63 north eighteen degrees fifty eight minutes fifty five seconds east (N18°58'55"E) for a distance of ninety three decimal five four two (93.542) metres;

THENCE turning and running the sinuosities of a (15) m reservation for Seventh Little Gull Pond, south sixty nine degrees ten minutes sixteen seconds east (S69°10'16"E) for a distance of nineteen decimal four four five (19.445) metres; **thence** south twenty degrees fifty eight minutes forty nine seconds east (S20°58'49"E) for a distance of fifty one decimal six two one (51.621) metres;

THENCE turning and running along Crown Land, south zero four degrees zero five minutes fifteen seconds west (S04°05'15"W) for a distance of thirty seven decimal nine seven eight (37.978) metres;

THENCE turning and running along the southwestern limit of a fifteen (15) metre road reservation, sixty four decimal five four seven (64.547) metres, along the arc of a counter-clockwise curve having a radius of one thousand fifteen decimal six three eight (1015.638) metres, a chord bearing of north eight five degrees fifty eight minutes zero zero seconds west (N85°58'00"W) and a chord distance of sixty four decimal five three six (64.536) metres; more or less, to the **Point of Beginning**.

All bearings are Grid North NAD83 in Zone 1 of the Transverse Mercator Projection as modified for the Province of Newfoundland;

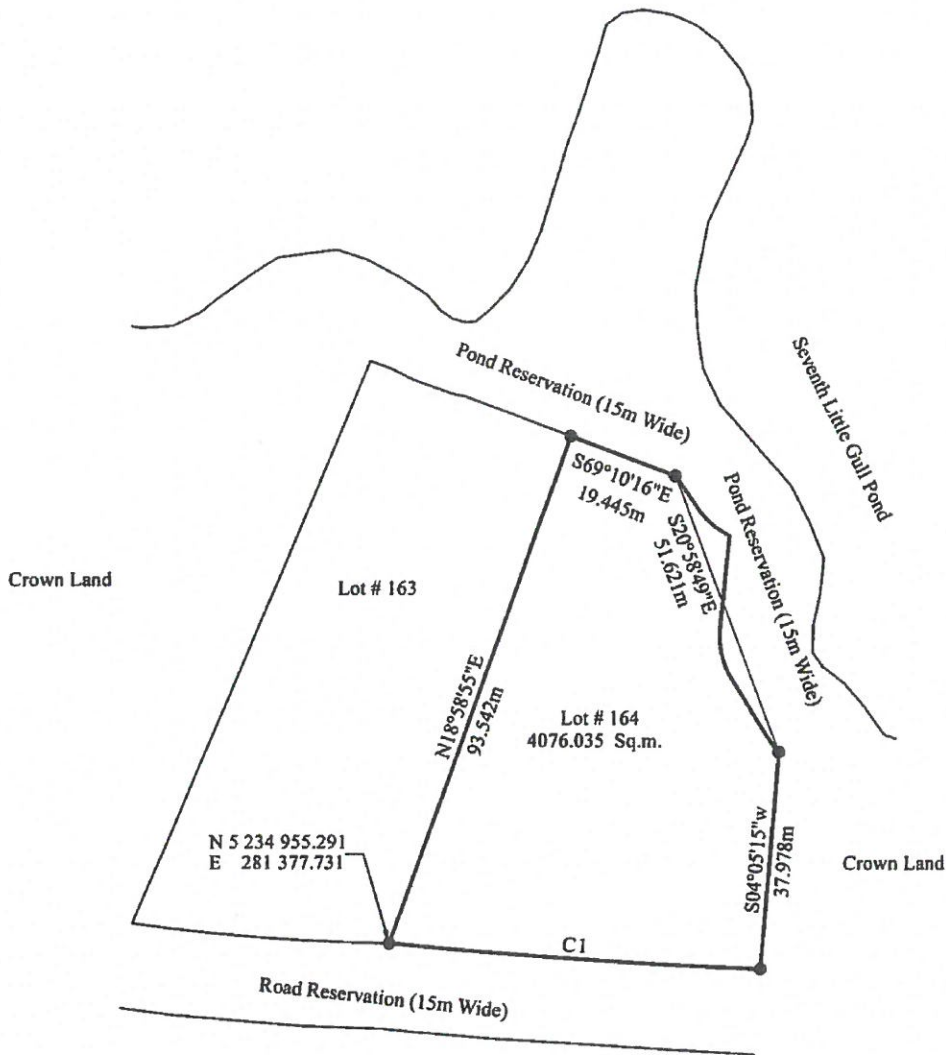
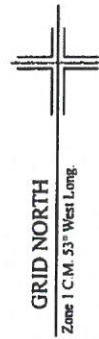
The above described piece or parcel of land contains an area of 4076.035 square metres, more or less, and is more particularly shown on the drawing hereto attached dated 24 07 2015.

This description and accompanying plan are integral parts necessary to adequately reflect the legal boundary of the subject property and therefor invalid if separated.



PROJECT# 001-15-E
DATED: 24 07 2015

SCHEDULE "B"



CURVE	ARC	RADIUS	BEARING	DISTANCE
C1	64.547m	1015.638m	$N85^{\circ}58'00''W$	64.536m

MONUMENTS USED:(NAD 83)

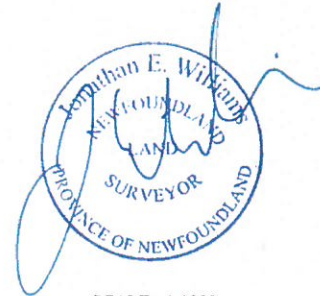
	NORTHING	EASTING
91008	5 235 159.049	282 467.294
83G3458	5 236 107.125	283 279.200

LEGEND:

- A. = anchor
- = capped iron pin
- o.h.w. = overhead wire
- P. = pole

NOTE: ALL DISTANCES ARE HORIZONTAL GROUND

DATE: July 24, 2015
PROJECT NO: 001-15-E



SCALE : 1:1000

SCHEDULE "A"

Lot # 165, Salmonier Cottage Lots, Newfoundland and Labrador, Canada

BEGINNING at a point, said point having the following NAD83 coordinates in Zone 1, central meridian 53° west longitude, of the Transverse Mercator Projection as modified for the Province of Newfoundland and Labrador

N 5 234 989.744
E 281 171.885

with reference to Monument number 91008 with Co-ordinates N 5 235 159.049 metres and E 282 467.294 metres and Monument number 83G3458 with Co-ordinates N 5 236 107.125 metres and E 283 279.200 metres;

THENCE running along the southeastern limit of a fifteen (15) metre road reservation, north thirty five degrees zero nine minutes twenty nine seconds east (N35°09'29"E) for a distance of thirteen decimal seven six five (13.765) metres; **thence** north forty six degrees thirty minutes twenty one seconds east (N46°30'21"E) for a distance of eighteen decimal four five eight (18.458) metres; **thence** north fifty eight degrees twenty nine minutes fifty nine seconds east (N58°29'59"E) for a distance of thirteen decimal five four three (13.543) metres;

THENCE turning and running along Crown Land, south forty two degrees twenty two minutes fifty nine seconds east (S42°22'59"E) for a distance of eighty one decimal seven seven zero (81.770) metres;

THENCE turning and running the sinuosities of a (15) m reservation for Eighth Little Gull Pond, south twenty one degrees twenty seven minutes twenty nine seconds west (S21°27'29"W) for a distance of twenty decimal two four zero (20.240) metres; **thence** south fifty eight degrees zero five minutes twenty five seconds west (S58°05'25"W) for a distance of twenty five decimal five four two (25.542) metres;

THENCE turning and running along Crown Land, north forty three degrees forty minutes zero three seconds west (N43°40'03"W) for a distance of eighty five decimal three zero one (85.301) metres; more or less, to the **Point of Beginning**.

All bearings are Grid North NAD83 in Zone 1 of the Transverse Mercator Projection as modified for the Province of Newfoundland;

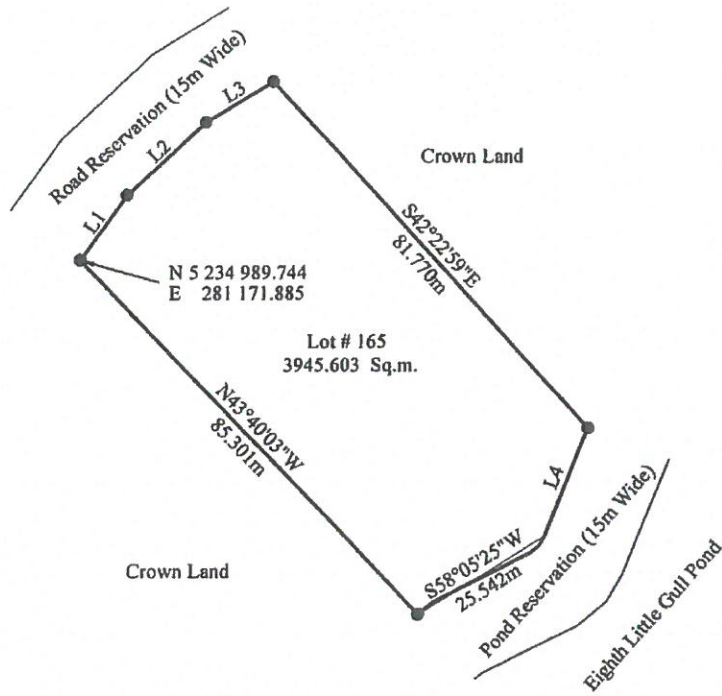
The above described piece or parcel of land contains an area of 3945.603 square metres, more or less, and is more particularly shown on the drawing hereto attached dated 24 07 2015.

This description and accompanying plan are integral parts necessary to adequately reflect the legal boundary of the subject property and therefor invalid if separated.



PROJECT# 001-15-E
DATED: 24 07 2015

SCHEDULE "B"



LINE	BEARING	DISTANCE
L1	N35°09'29"E	13.765m
L2	N46°30'21"E	18.458m
L3	N58°29'59"E	13.543m
L4	S21°27'29"W	20.240m

MONUMENTS USED:(NAD 83)

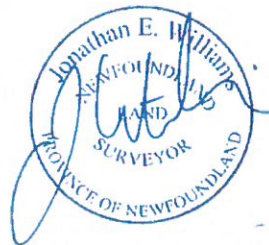
	NORTHING	EASTING
91008	5 235 159.049	282 467.294
83G3458	5 236 107.125	283 279.200

LEGEND:

- A. = anchor
- = capped iron pin
- o.h.w. = overhead wire
- P. = pole

NOTE: ALL DISTANCES ARE HORIZONTAL GROUND

DATE: July 24, 2015
PROJECT NO: 001-15-E



—SCALE : 1:1000—

SCHEDULE "A"

Lot # 167, Salmonier Cottage Lots, Newfoundland and Labrador, Canada

BEGINNING at a point, said point having the following NAD83 coordinates in Zone 1, central meridian 53° west longitude, of the Transverse Mercator Projection as modified for the Province of Newfoundland and Labrador

N 5 234 851.743
E 281 417.429

with reference to Monument number 91008 with Co-ordinates N 5 235 159.049 metres and E 282 467.294 metres and Monument number 83G3458 with Co-ordinates N 5 236 107.125 metres and E 283 279.200 metres;

THENCE running along Lot #168, north eighty six degrees forty minutes eighteen seconds west (N86°40'18"W) for a distance of seventy seven decimal one zero zero (77.100) metres;

THENCE turning and running along the sinuosities of a fifteen (15) metre reservation for Eighth Little Gull Pond, north twenty degrees twenty six minutes thirty one seconds east (N20°26'31"E) for a distance of thirty five decimal eight eight three (35.883) metres; thence north zero seven degrees zero four minutes zero nine seconds west (N07°04'09"W) for a distance of twenty three decimal four zero five (23.405) metres;

THENCE turning and running along Crown Land, south eighty nine degrees fifty nine minutes forty five seconds east (S89°59'45"E) for a distance of sixty six decimal one zero zero (66.100) metres;

THENCE turning and running along the western limit of a fifteen (15) metre road reservation, sixty one decimal four zero nine (61.409), along the arc of a counter-clockwise curve having a radius of three hundre fifty eight decimal three five seven (358.357) metres, a chord bearing of south zero one degrees zero eight minutes seventeen seconds east (S01°08'17"E) and a chord distance of sixty one decimal three three four (61.334) metres, more or less, to the **Point of Beginning**

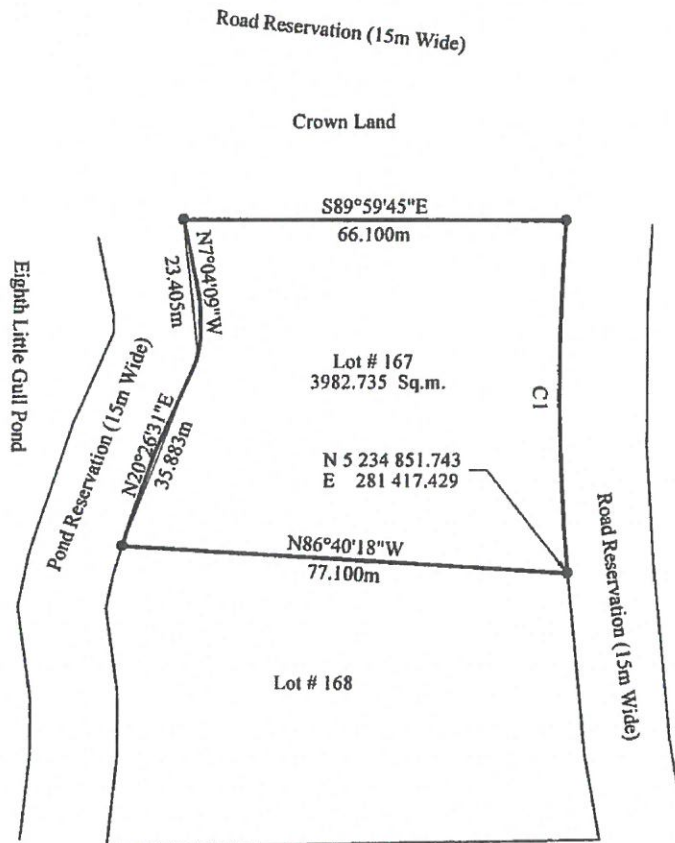
All bearings are Grid North NAD83 in Zone 1 of the Transverse Mercator Projection as modified for the Province of Newfoundland;

The above described piece or parcel of land contains an area of 3982.735 square metres, more or less, and is more particularly shown on the drawing hereto attached dated 24 07 2015.

This description and accompanying plan are integral parts necessary to adequately reflect the legal boundary of the subject property and therefor invalid if separated.



SCHEDULE "B"



CURVE	ARC	RADIUS	BEARING	DISTANCE
C1	61.409m	358.357m	S1°08'17"E	61.334m

MONUMENTS USED:(NAD 83)

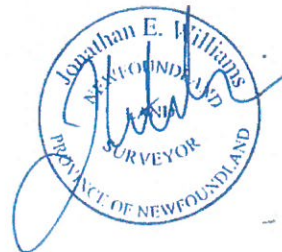
	NORTHING	EASTING
91008	5 235 159.049	282 467.294
83G3458	5 236 107.125	283 279.200

LEGEND:

- A. = anchor
- = capped iron pin
- o.h.w. = overhead wire
- P. = pole

NOTE: ALL DISTANCES ARE HORIZONTAL GROUND

DATE: July 24, 2015
PROJECT NO: 001-15-E



SCALE: 1:1000

SCHEDULE "A"

Lot # 169, Salmonier Cottage Lots, Newfoundland and Labrador, Canada

BEGINNING at a point, said point having the following NAD83 coordinates in Zone 1, central meridian 53° west longitude, of the Transverse Mercator Projection as modified for the Province of Newfoundland and Labrador

N 5 234 805.432
E 281 423.739

with reference to Monument number 91008 with Co-ordinates N 5 235 159.049 metres and E 282 467.294 metres and Monument number 83G3458 with Co-ordinates N 5 236 107.125 metres and E 283 279.200 metres;

THENCE running along the western limit of a fifteen (15) metre road reservation, forty five decimal zero seven one (45.071) metres on the arc of a counter clockwise curve having a radius of two hundred and fifty five decimal one eight three (255.183) metres, a chord bearing of south twelve degrees twenty three minutes fourteen seconds east (S12°23'14"E) and a chord distance of forty five decimal zero one three (45.013) metres;

THENCE turning and running along Lot # 170 south eighty eight degrees zero eight minutes thirty eight seconds west (S88°08'38"W) for a distance of ninety seven decimal seven zero one (97.701) metres;

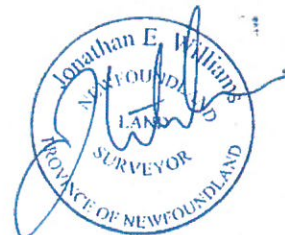
THENCE turning and running along the sinuosities of a fifteen (15) metre reservation for Eighth Little Gull Pond, north zero three degrees forty one minutes fifty two seconds east (N03°41'52"E) for a distance of forty five decimal four one two (45.412) metres;

THENCE turning and running along Lot #168, north eighty eight degrees forty six minutes forty eight seconds east (N88°46'48"E) for a distance of eighty five decimal zero eight four (85.084) metres, more or less, to the **Point of Beginning**

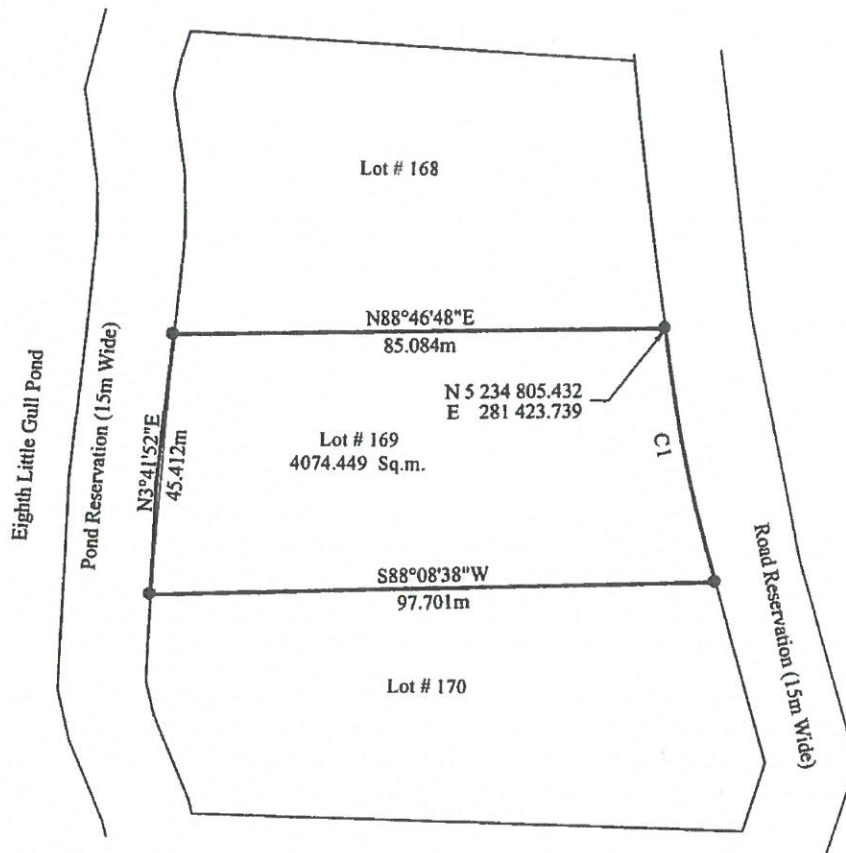
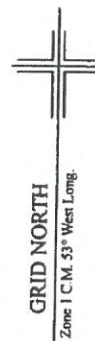
All bearings are Grid North NAD83 in Zone 1 of the Transverse Mercator Projection as modified for the Province of Newfoundland;

The above described piece or parcel of land contains an area of 4074.449 square metres, more or less, and is more particularly shown on the drawing hereto attached dated 24 07 2015.

This description and accompanying plan are integral parts necessary to adequately reflect the legal boundary of the subject property and therefor invalid if separated.



SCHEDULE "B"



CURVE	ARC	RADIUS	BEARING	DISTANCE
C1	45.071m	255.183m	S12°23'14"E	45.013m

MONUMENTS USED:(NAD 83)

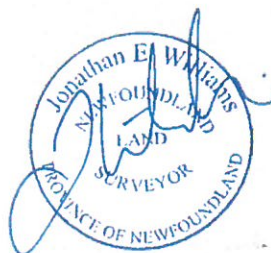
	NORTHING	EASTING
91008	5 235 159.049	282 467.294
83G3458	5 236 107.125	283 279.200

LEGEND:

- A. = anchor
- = capped iron pin
- o.h.w. = overhead wire
- P. = pole

NOTE: ALL DISTANCES ARE HORIZONTAL GROUND

DATE: July 24, 2015
PROJECT NO: 001-15-E



SCALE : 1:1000

SCHEDULE "A"

Lot # 170, Salmonier Cottage Lots, Newfoundland and Labrador, Canada

BEGINNING at a point, said point having the following NAD83 coordinates in Zone 1, central meridian 53° west longitude, of the Transverse Mercator Projection as modified for the Province of Newfoundland and Labrador

N 5 234 761.467
E 281 433.395

with reference to Monument number 91008 with Co-ordinates N 5 235 159.049 metres and E 282 467.294 metres and Monument number 83G3458 with Co-ordinates N 5 236 107.125 metres and E 283 279.200 metres;

THENCE running along the western limit of a fifteen (15) metre road reservation, south sixteen degrees forty three minutes thirteen seconds east (S16°43'13"E) for a distance of thirty two decimal six nine three (32.693) metres; **thence** south sixteen degrees forty eight minutes eleven seconds west (S16°48'11"W) for a distance of twelve decimal five seven one (12.571) metres;

THENCE turning and running along Crown Land, north eighty eight degrees forty six minutes eleven seconds west (N88°46'11"W) for a distance of ninety five decimal five two zero (95.520) metres;

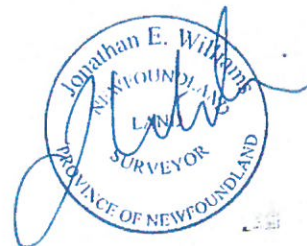
THENCE turning and running along the sinuosities of a fifteen (15) metre reservation for Eighth Little Gull Pond, north nineteen degrees fifty six minutes forty six seconds west (N19°56'46"W) for a distance of twenty four decimal five six zero (24.560) metres; **thence** north zero one degrees forty four minutes zero four seconds east (N01°44'04"E) for a distance of fifteen decimal zero four nine (15.049) metres;

THENCE turning and running along Lot #169, north eighty eight degrees zero eight minutes thirty eight seconds east (N88°08'38"E) for a distance of ninety seven decimal seven zero one (97.701) metres, more or less, to the **Point of Beginning**

All bearings are Grid North NAD83 in Zone 1 of the Transverse Mercator Projection as modified for the Province of Newfoundland;

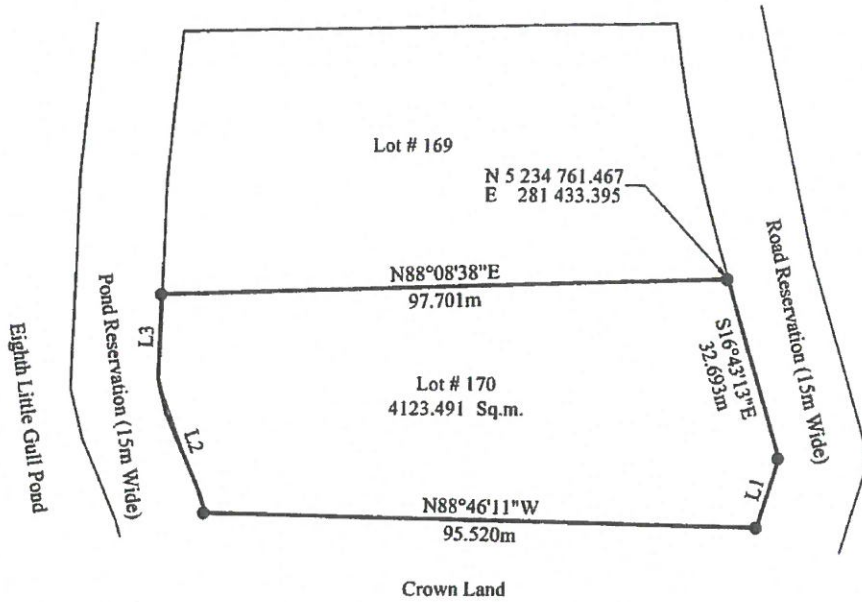
The above described piece or parcel of land contains an area of 4123.491 square metres, more or less, and is more particularly shown on the drawing hereto attached dated 24 07 2015.

This description and accompanying plan are integral parts necessary to adequately reflect the legal boundary of the subject property and therefor invalid if separated.



PROJECT# 001-15-E
DATED: 24 07 2015

SCHEDULE "B"



LINE	BEARING	DISTANCE
L1	S16°48'11\"W	12.571m
L2	N19°56'46\"W	24.560m
L3	N01°44'04\"E	15.049m

MONUMENTS USED:(NAD 83)

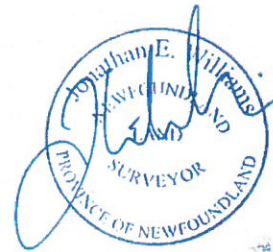
	NORTHING	EASTING
91008	5 235 159.049	282 467.294
83G3458	5 236 107.125	283 279.200

LEGEND:

- A. = anchor
- = capped iron pin
- o.h.w. = overhead wire
- P. = pole

NOTE: ALL DISTANCES ARE HORIZONTAL GROUND

DATE: July 24, 2015
PROJECT NO: 001-15-E



—SCALE : 1:1000—

SCHEDULE "A"

Lot # 171, Salmonier Cottage Lots, Newfoundland and Labrador, Canada

BEGINNING at a point, said point having the following NAD83 coordinates in Zone 1, central meridian 53° west longitude, of the Transverse Mercator Projection as modified for the Province of Newfoundland and Labrador

N 5 234 628.786
E 281 176.573

with reference to Monument number 91008 with Co-ordinates N 5 235 159.049 metres and E 282 467.294 metres and Monument number 83G3458 with Co-ordinates N 5 236 107.125 metres and E 283 279.200 metres;

THENCE running along Lot #172, north forty eight degrees thirty five minutes forty two seconds east (N48°35'42"E) for a distance of eighty one decimal one nine eight (81.198) metres;

THENCE turning and running along the sinuosities of a fifteen (15) metre reservation for Eighth Little Gull Pond, south sixty two degrees twenty minutes forty seven seconds east (S62°20'47"E) for a distance of fifty nine decimal zero nine three (59.093) metres;

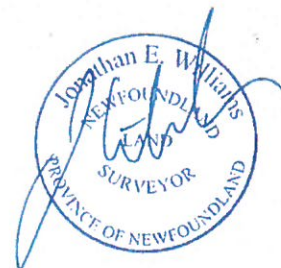
THENCE turning and running along Crown Land, sixty one decimal one one two (61.112) metres along the arc of a counter-clockwise curve having a radius of sixty eight decimal zero eight seven (68.087) metres, a chord bearing of south forty seven degrees thirty five minutes fifty seconds west (S47°35'50"W) and a chord distance of fifty nine decimal zero eight two (59.082) metres; thence fifty three decimal two six nine (53.269) metres along the arc of a clockwise curve having a radius of one hundred twenty eight decimal three one eight (128.318) metres, a chord bearing of south sixty eight degrees twenty five minutes forty seconds west (S68°25'40"W) and a chord distance of fifty two decimal eight eight seven (52.887) metres;

THENCE turning and running along the northeastern limit of a fifteen (15) metre road reservation, north thirty one degrees forty five minutes thirty eight seconds west (N31°45'38"W) for a distance of thirty eight decimal eight four two (38.842) metres, more or less, to the **Point of Beginning**

All bearings are Grid North NAD83 in Zone 1 of the Transverse Mercator Projection as modified for the Province of Newfoundland;

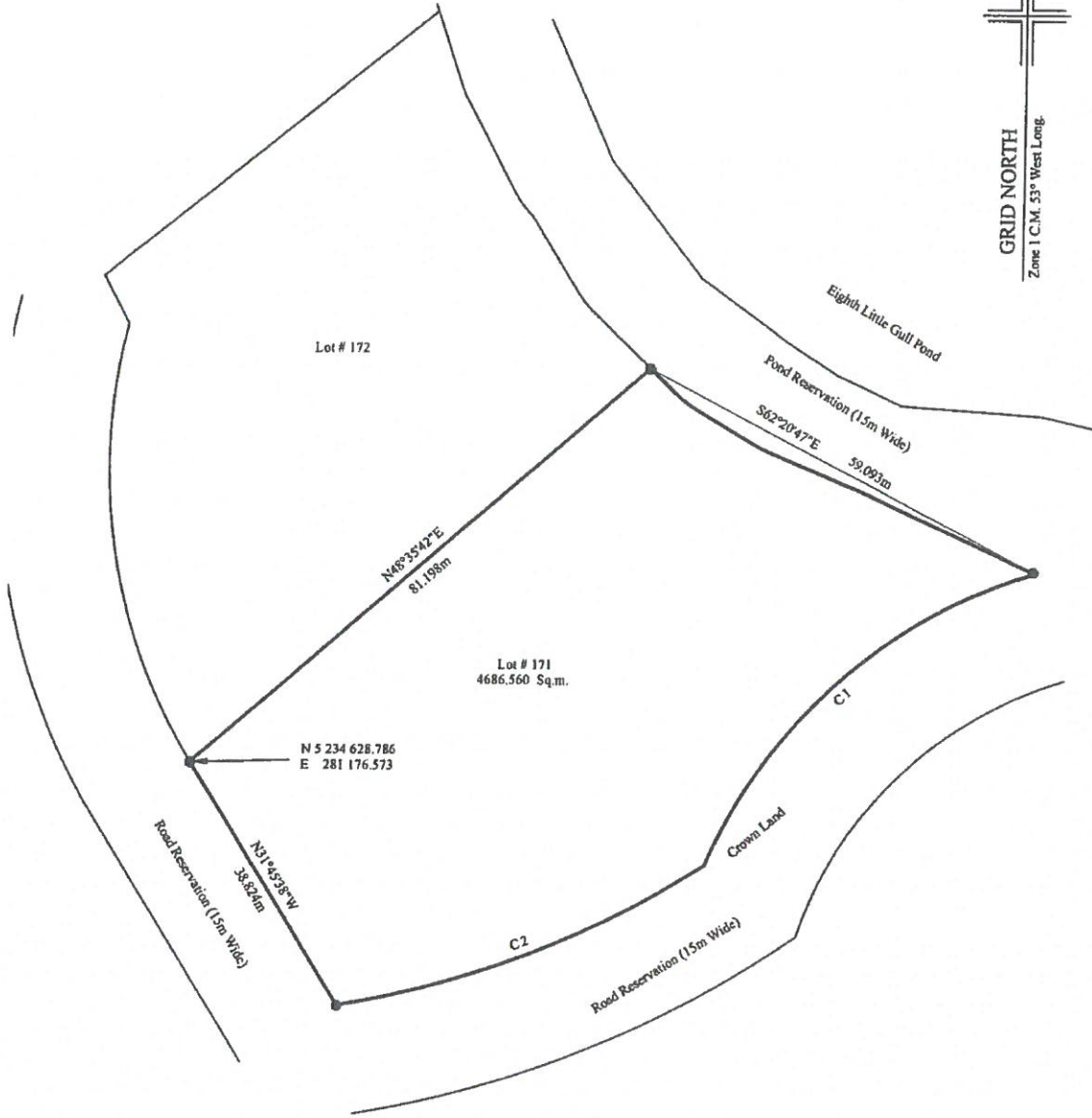
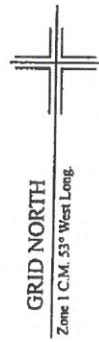
The above described piece or parcel of land contains an area of 4868.560 square metres, more or less, and is more particularly shown on the drawing hereto attached dated 24 07 2015.

This description and accompanying plan are integral parts necessary to adequately reflect the legal boundary of the subject property and therefor invalid if separated.



PROJECT# 001-15-E
DATED: 24 07 2015

SCHEDULE "B"



CURVE	ARC	RADIUS	BEARING	DISTANCE
C1	61.112m	68.087m	S47°35'50\"W	59.082m
C2	53.269m	128.318m	S68°25'40\"W	52.887m

MONUMENTS USED:(NAD 83)

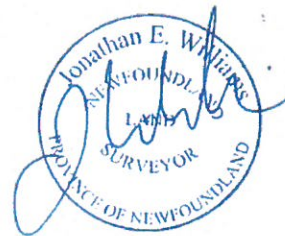
	NORTHING	EASTING
91008	5 235 159.049	282 467.294
83G3458	5 236 107.125	283 279.200

LEGEND:

- A. = anchor
- = capped iron pin
- o.h.w. = overhead wire
- P. = pole

NOTE: ALL DISTANCES ARE HORIZONTAL GROUND

DATE: July 24, 2015
PROJECT NO: 001-15-E



SCALE : 1:750

SCHEDULE "A"

Lot # 172, Salmonier Cottage Lots, Newfoundland and Labrador, Canada

BEGINNING at a point, said point having the following NAD83 coordinates in Zone 1, central meridian 53° west longitude, of the Transverse Mercator Projection as modified for the Province of Newfoundland and Labrador

N 5 234 694.461
E 281 163.853

with reference to Monument number 91008 with Co-ordinates N 5 235 159.049 metres and E 282 467.294 metres and Monument number 83G3458 with Co-ordinates N 5 236 107.125 metres and E 283 279.200 metres;

THENCE running along Lot #173, north fifty degrees fifty three minutes eleven seconds east (N50°53'11"E) for a distance of fifty six decimal eight nine seven (56.897) metres;

THENCE turning and running along the sinuosities of a fifteen (15) metre reservation for Eighth Little Gull Pond, south twenty five degrees thirty three minutes forty seven seconds east (S25°33'47"E) for a distance of thirty decimal four seven eight (30.478) metres; **thence** south thirty eight degrees forty two minutes twenty six seconds east (S38°42'26"E) for a distance of twenty six decimal one zero seven (26.107) metres;

THENCE turning and running along Lot #171, south forty eight degrees thirty five minutes forty two seconds west (S48°35'42"W) for a distance of eighty one decimal one nine eight (81.198) metres;

THENCE turning and running along the northeastern limit of a fifteen (15) metre road reservation, sixty one decimal four nine nine (61.499) metres, along the arc of a clockwise curve having a radius of seventy six decimal four one zero (76.410) metres, a chord bearing of north zero eight degrees, fifty seven minutes twenty six seconds west (N08°57'26"W) and a chord bearing of fifty nine decimal eight five two (59.852) metres; **thence** north twenty seven degrees twenty five minutes fifty seconds west (N27°25'50"W) for a distance of seven decimal three eight three (7.383) metres, more or less, to the **Point of Beginning**

All bearings are Grid North NAD83 in Zone 1 of the Transverse Mercator Projection as modified for the Province of Newfoundland;

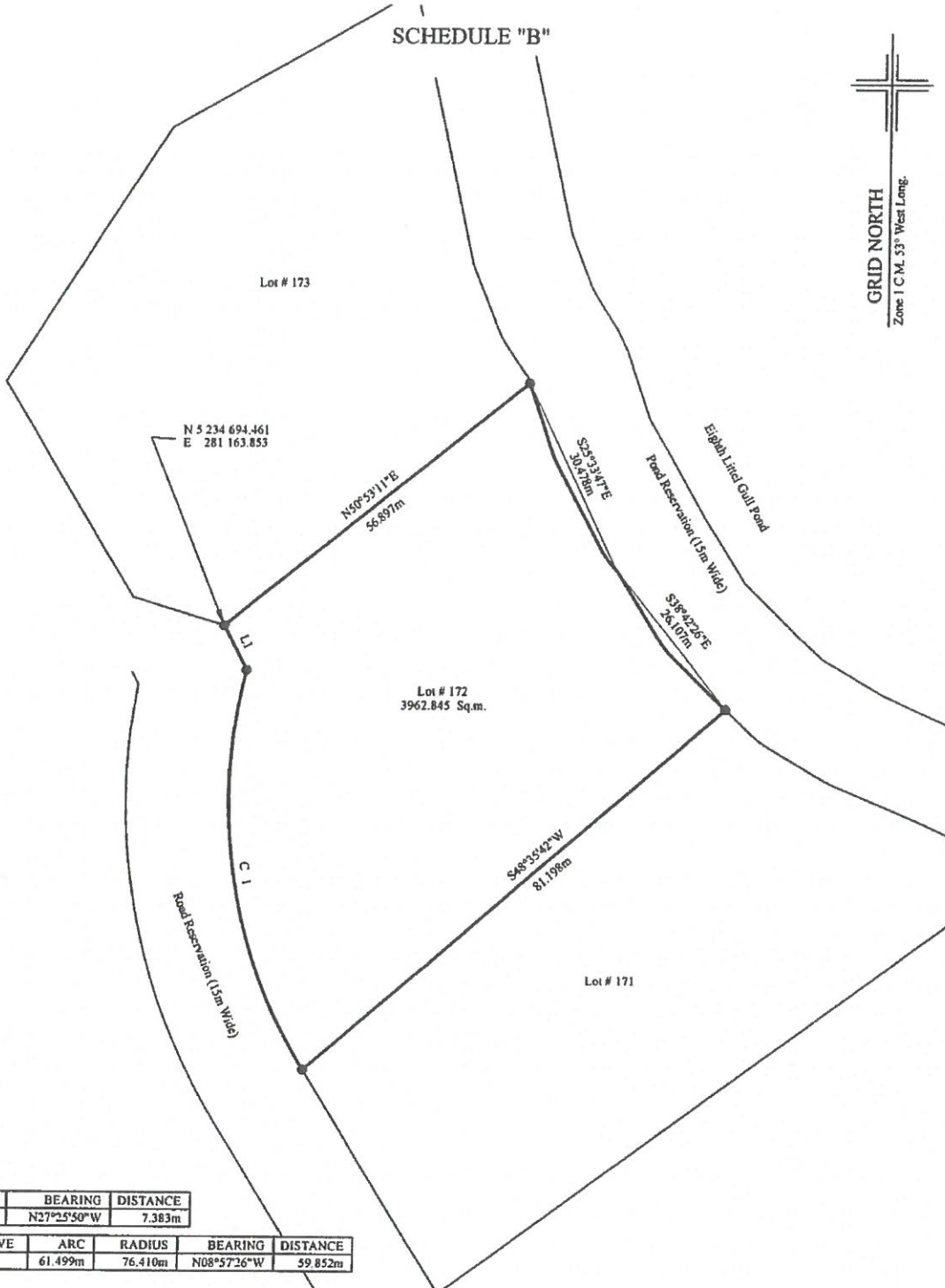
The above described piece or parcel of land contains an area of 3962.845 square metres, more or less, and is more particularly shown on the drawing hereto attached dated 24 07 2015.

This description and accompanying plan are integral parts necessary to adequately reflect the legal boundary of the subject property and therefor invalid if separated.



PROJECT# 001-15-E
DATED: 24 07 2015

SCHEDULE "B"



MONUMENTS USED:(NAD 83)

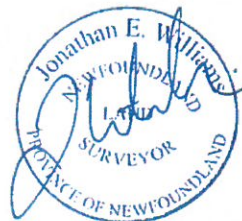
	NORTHING	EASTING
91008	5 235 159.049	282 467.294
83G3458	5 236 107.125	283 279.200

LEGEND:

- A. = anchor
- = capped iron pin
- o.h.w. = overhead wire
- P. = pole

NOTE: ALL DISTANCES ARE HORIZONTAL GROUND

DATE: July 24, 2015
PROJECT NO: 001-15-E



SCALE : 1:750

SCHEDULE "A"

Lot # 177, Salmonier Cottage Lots, Newfoundland and Labrador, Canada

BEGINNING at a point, said point having the following NAD83 coordinates in Zone 1, central meridian 53° west longitude, of the Transverse Mercator Projection as modified for the Province of Newfoundland and Labrador

N 5 234 693.715
E 280 971.348

with reference to Monument number 91008 with Co-ordinates N 5 235 159.049 metres and E 282 467.294 metres and Monument number 83G3458 with Co-ordinates N 5 236 107.125 metres and E 283 279.200 metres;

THENCE running along Crown Land, north eighty six degrees forty four minutes twenty seconds west (N86°44'20"W) for a distance of one hundred nineteen decimal four one one (119.411) metres;

THENCE turning and running along the sinuosities of a fifteen (15) metre reservation for Little Gull Pond, north thirteen degrees thirty one minutes zero two seconds east (N13°31'02"E) for a distance of forty two decimal five three five (42.535) metres;

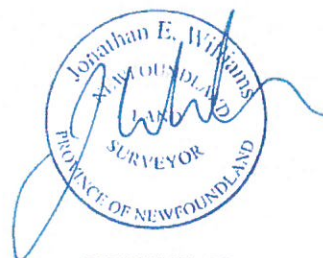
THENCE turning and running along Lot #178, south eighty five degrees forty minutes eighteen seconds east (S85°40'18"E) for a distance of one hundred twenty four decimal six four seven (124.647) metres;

THENCE turning and running along the northwestern limit of a fifteen (15) metre road reservation, south zero five degrees fifty eight minutes twenty three seconds west (S05°58'23"W) for a distance of sixteen decimal six two one (16.621) metres; thence twenty five decimal nine seven two (25.972) metres, along the arc of a clockwise curve having a radius of ninety decimal six one seven (90.617) metres, a chord bearing of south thirty degrees fifty three minutes fifteen seconds west (S30°53'15"W) for a distance of twenty five decimal eight eight three (25.883) metres, more or less, to the Point of Beginning

All bearings are Grid North NAD83 in Zone 1 of the Transverse Mercator Projection as modified for the Province of Newfoundland;

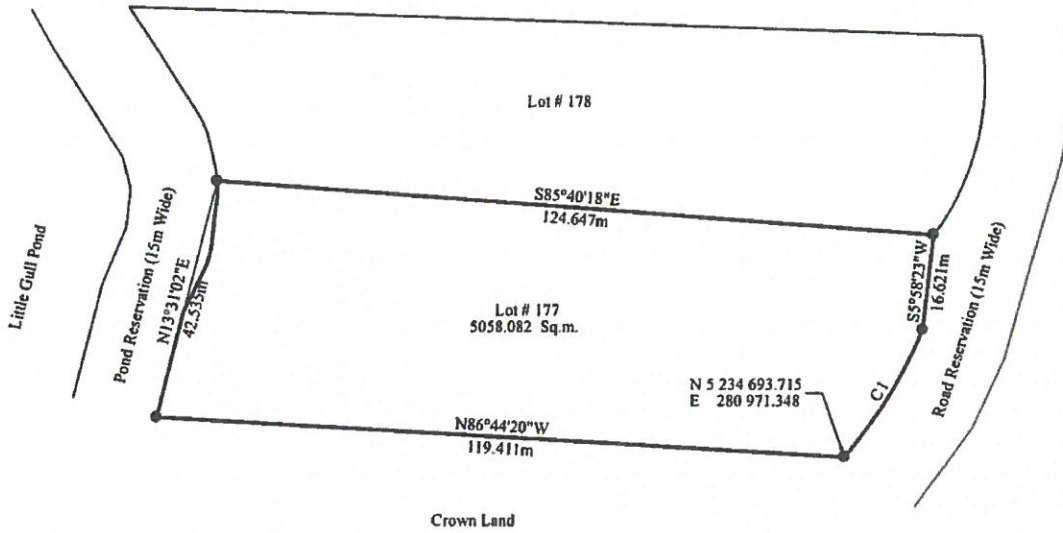
The above described piece or parcel of land contains an area of 5058.082 square metres, more or less, and is more particularly shown on the drawing hereto attached dated 24 07 2015.

This description and accompanying plan are integral parts necessary to adequately reflect the legal boundary of the subject property and therefor invalid if separated.



PROJECT# 001-15-E
DATED: 24 07 2015

SCHEDULE "B"



CURVE	ARC	RADIUS	BEARING	DISTANCE
C1	25.972m	90.617m	S30°53'15\"W	25.883m

MONUMENTS USED:(NAD 83)

	NORTHING	EASTING
91008	5 235 159.049	282 467.294
83G3458	5 236 107.125	283 279.200

LEGEND:

- A. = anchor
- = capped iron pin
- o.h.w. = overhead wire
- P. = pole

NOTE: ALL DISTANCES ARE HORIZONTAL GROUND

DATE: July 24, 2015
PROJECT NO: 001-15-E



SCALE: 1:1000

SCHEDULE "A"

Lot # 180, Salmonier Cottage Lots, Newfoundland and Labrador, Canada

BEGINNING at a point, said point having the following NAD83 coordinates in Zone 1, central meridian 53° west longitude, of the Transverse Mercator Projection as modified for the Province of Newfoundland and Labrador

N 5 234 846.543
E 280 971.705

with reference to Monument number 91008 with Co-ordinates N 5 235 159.049 metres and E 282 467.294 metres and Monument number 83G3458 with Co-ordinates N 5 236 107.125 metres and E 283 279.200 metres;

THENCE running along the southwestern limit of a fifteen (15) metres road reservation, south fifty one degrees zero three minutes forty seconds east (S51°03'40"E) for a distance of thirty nine decimal one two eight (39.128) metres; thence south fifteen degrees seventeen minutes zero eight seconds east (S15°17'08"E) for a distance of seventeen decimal zero eight one (17.081) metres;

THENCE turning and running along Lot #179, south eighty six degrees zero six minutes thirty four seconds west (S86°06'34"W) for a distance of one hundred seventy two decimal seven zero nine (172.709) metres;

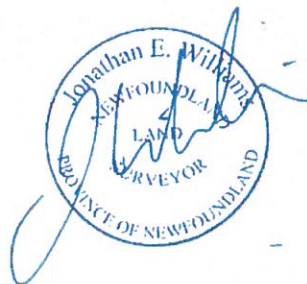
THENCE turning and running along the sinuosities of a fifteen (15) metre reservation for Little Gull Pond, north nineteen degrees forty five minutes forty four seconds west (N19°45'44"W) for a distance of seventeen decimal seven eight four (17.784) metres;

THENCE running along Lot #181 north seventy five degrees fifty three minutes fourteen seconds east (N75°53'14"E) for a distance of one hundred forty seven decimal eight four nine (147.849) metres, more or less, to the **Point of Beginning**.

All bearings are Grid North NAD83 in Zone 1 of the Transverse Mercator Projection as modified for the Province of Newfoundland;

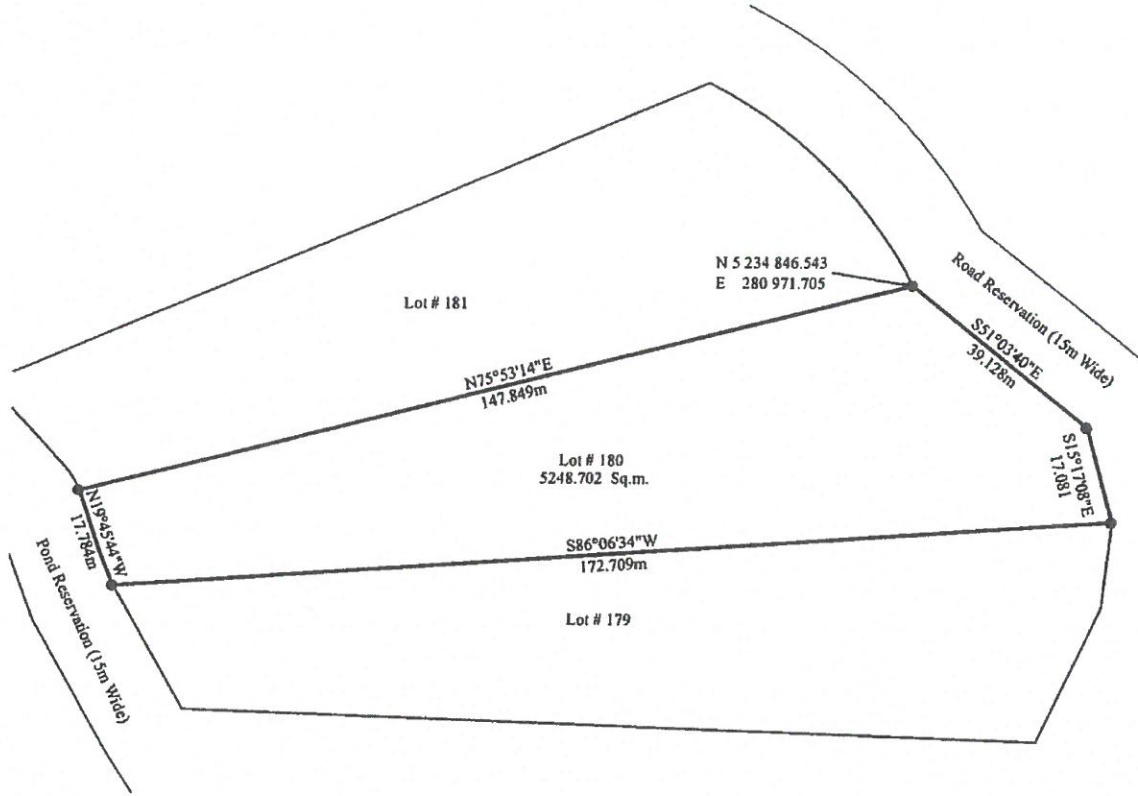
The above described piece or parcel of land contains an area of 5248.702 square metres, more or less, and is more particularly shown on the drawing hereto attached dated 24 07 2015.

This description and accompanying plan are integral parts necessary to adequately reflect the legal boundary of the subject property and therefor invalid if separated.



PROJECT# 001-15-E
DATED: 24 07 2015

SCHEDULE "B"



MONUMENTS USED:(NAD 83)

	NORTHING	EASTING
91008	5 235 159.049	282 467.294
83G3458	5 236 107.125	283 279.200

LEGEND:

- A. = anchor
- = capped iron pin
- o.h.w. = overhead wire
- P. = pole

NOTE: ALL DISTANCES ARE HORIZONTAL GROUND

DATE: July 24, 2015
PROJECT NO: 001-15-E



—SCALE : 1:1000—

SCHEDULE "A"

Lot # 182, Salmonier Cottage Lots, Newfoundland and Labrador, Canada

BEGINNING at a point, said point having the following NAD83 coordinates in Zone 1, central meridian 53° west longitude, of the Transverse Mercator Projection as modified for the Province of Newfoundland and Labrador

N 5 234 952.347
E 280 872.230

with reference to Monument number 91008 with Co-ordinates N 5 235 159.049 metres and E 282 467.294 metres and Monument number 83G3458 with Co-ordinates N 5 236 107.125 metres and E 283 279.200 metres;

THENCE turning and running along the southwestern limit of fifteen (15) metre road reservation, south forty degrees forty nine minutes forty two seconds east (S40°49'42"E) for a distance of thirty seven decimal six one three (37.613) metres;

THENCE turning and running along Crown Land, south sixty two degrees forty six minutes thirty three seconds west (S62°46'33"W) for a distance of one hundred forty eight decimal four four three (148.443) metres;

THENCE turning and running along the sinuosity's of a fifteen (15) metre reservation for Little Gull Pond, north forty degrees forty three minutes twenty four seconds west (N40°43'24"W) for a distance of twenty six decimal six three five (26.635) metres;

THENCE running along Lot # 183, north fifty eight degrees thirty five minutes forty one seconds east (N58°35'41"E) for a distance of one hundred forty six decimal two zero three (146.203) metres; more or less, to the **Point of Beginning**.

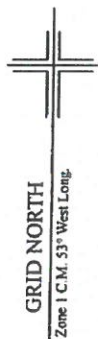
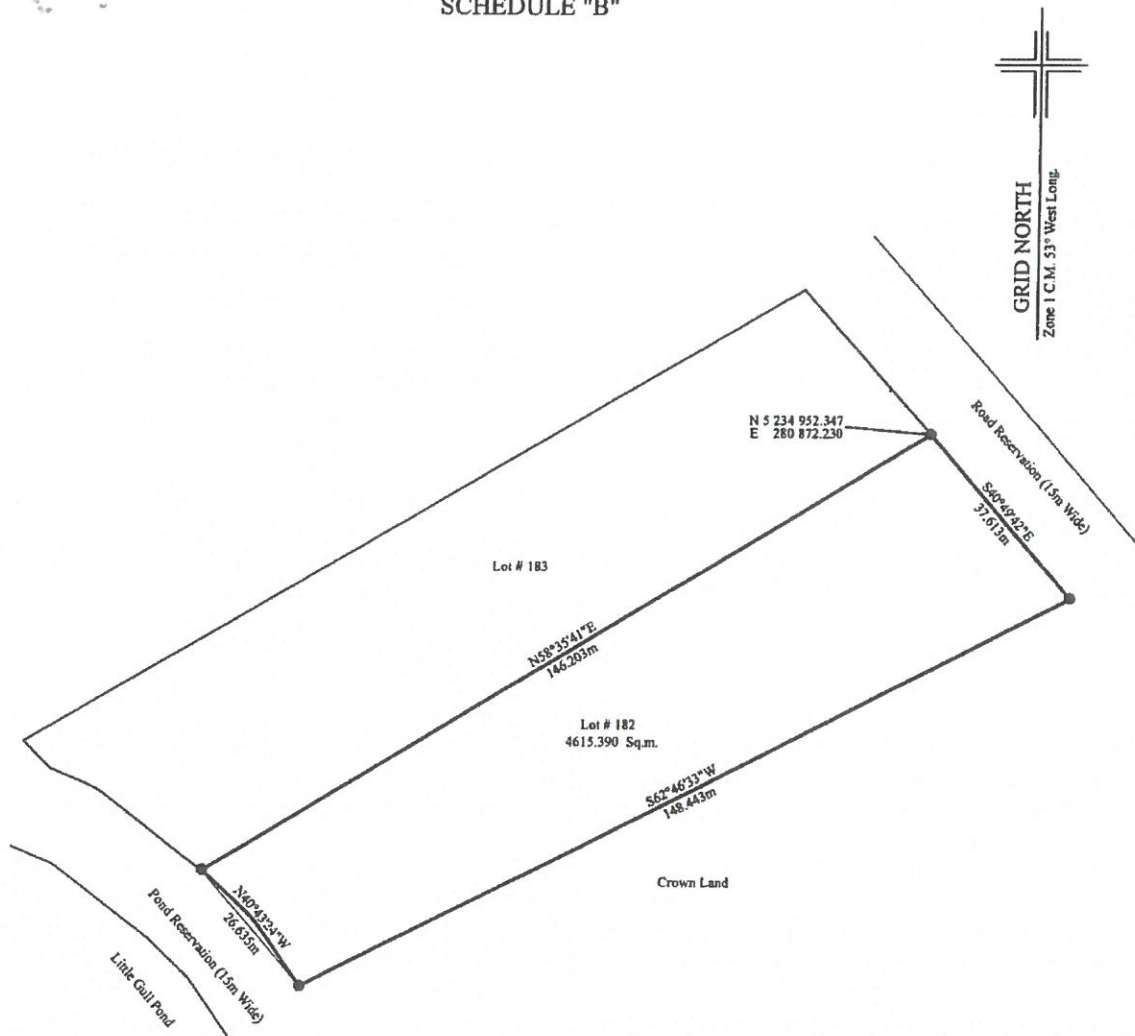
All bearings are Grid North NAD83 in Zone 1 of the Transverse Mercator Projection as modified for the Province of Newfoundland;

The above described piece or parcel of land contains an area of 4615.390 square metres, more or less, and is more particularly shown on the drawing hereto attached dated 24 07 2015.

This description and accompanying plan are integral parts necessary to adequately reflect the legal boundary of the subject property and therefor invalid if separated.



SCHEDULE "B"



MONUMENTS USED:(NAD 83)

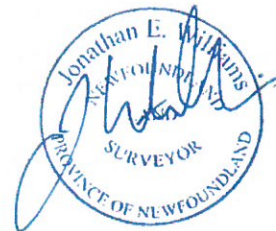
	NORTHING	EASTING
91008	5 235 159.049	282 467.294
83G3458	5 236 107.125	283 279.200

LEGEND:

- A. = anchor
- = capped iron pin
- o.h.w. = overhead wire
- P. = pole

NOTE: ALL DISTANCES ARE HORIZONTAL GROUND

DATE: July 24, 2015
PROJECT NO: 001-15-E



—SCALE: 1:1000—

SCHEDULE "A"

Lot # 183, Salmonier Cottage Lots, Newfoundland and Labrador, Canada

BEGINNING at a point, said point having the following NAD83 coordinates in Zone 1, central meridian 53° west longitude, of the Transverse Mercator Projection as modified for the Province of Newfoundland and Labrador

N 5 234 952.347
E 280 872.230

with reference to Monument number 91008 with Co-ordinates N 5 235 159.049 metres and E 282 467.294 metres and Monument number 83G3458 with Co-ordinates N 5 236 107.125 metres and E 283 279.200 metres;

THENCE running along Lot # 182, south fifty eight degrees thirty five minutes forty one seconds west (S58°35'41"W) for a distance of one hundred forty six decimal two zero three (146.203) metres;

THENCE turning and running along the sinuosity's of a fifteen (15) metre reservation for Little Gull Pond, north fifty four degrees ten minutes thirty seconds west (N54°10'30"W) for a distance of thirty eight decimal one three one (38.131) metres;

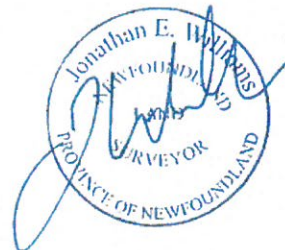
THENCE turning and running along Lot # 184 north fifty nine degrees twenty four minutes forty eight seconds east (N59°24'48"E) for a distance of one hundred fifty three decimal nine six two (153.962) metres;

THENCE turning and running along the southwestern limit of a fifteen (15) metre road reservation, south forty three degrees twenty five minutes zero six seconds east (S43°25'06"E) for a distance of thirty three decimal six nine seven (33.697) metres, more or less, to the **Point of Beginning**.

All bearings are Grid North NAD83 in Zone 1 of the Transverse Mercator Projection as modified for the Province of Newfoundland;

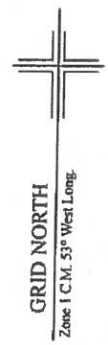
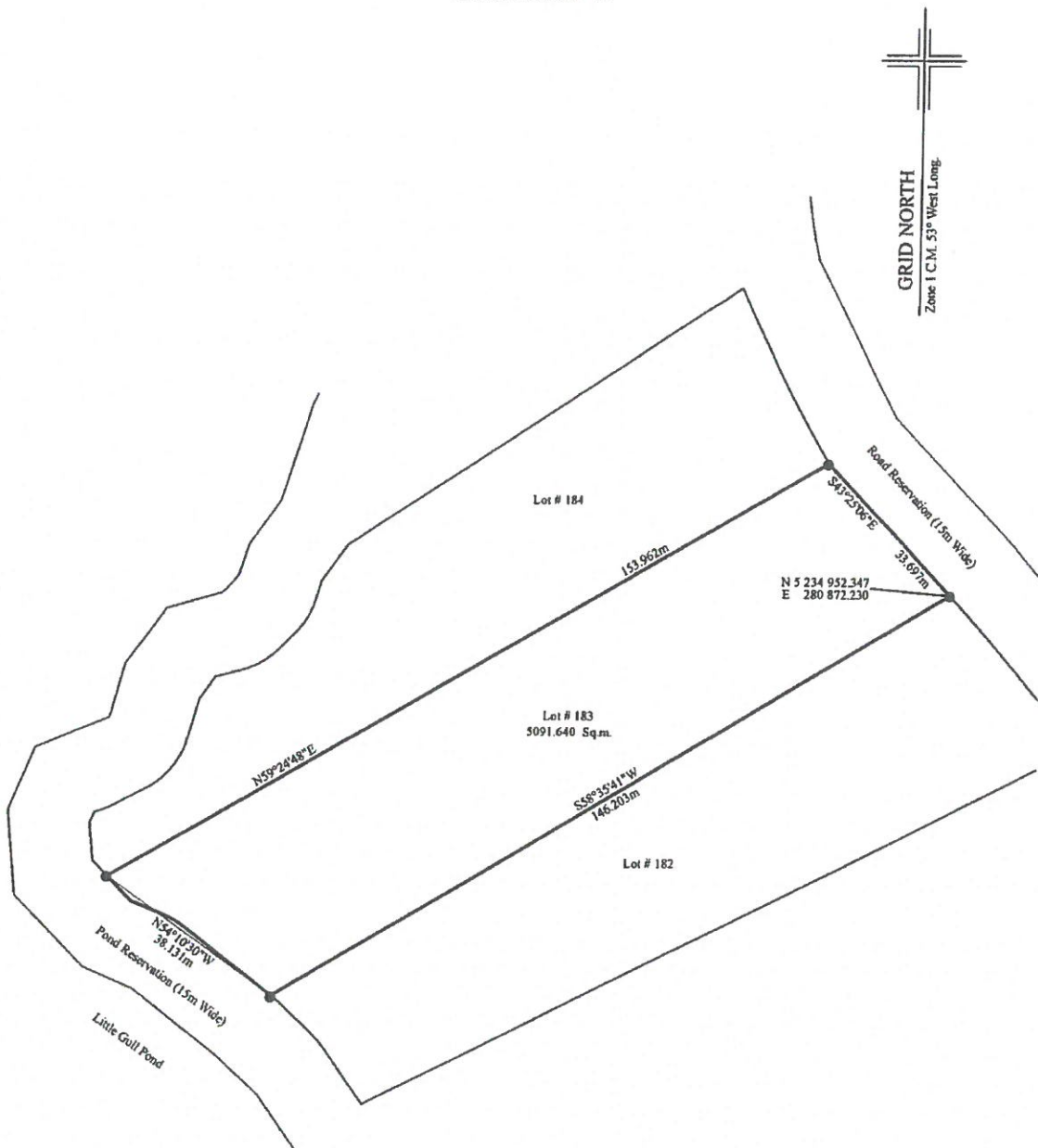
The above described piece or parcel of land contains an area of 5091.640 square metres, more or less, and is more particularly shown on the drawing hereto attached dated 24 07 2015.

This description and accompanying plan are integral parts necessary to adequately reflect the legal boundary of the subject property and therefor invalid if separated.



PROJECT# 001-15-E
DATED: 24 07 2015

SCHEDULE "B"



MONUMENTS USED:(NAD 83)

	NORTHING	EASTING
91008	5 235 159.049	282 467.294
83G3458	5 236 107.125	283 279.200

LEGEND:

- A. = anchor
- = capped iron pin
- o.h.w. = overhead wire
- P. = pole

NOTE: ALL DISTANCES ARE HORIZONTAL GROUND

DATE: July 24, 2015
PROJECT NO: 001-15-E



—SCALE : 1:1000—

SCHEDULE "A"

Lot # 184, Salmonier Cottage Lots, Newfoundland and Labrador, Canada

BEGINNING at a point, said point having the following NAD83 coordinates in Zone 1, central meridian 53° west longitude, of the Transverse Mercator Projection as modified for the Province of Newfoundland and Labrador

N 5 235 007.071
E 280 828.852

with reference to Monument number 91008 with Co-ordinates N 5 235 159.049 metres and E 282 467.294 metres and Monument number 83G3458 with Co-ordinates N 5 236 107.125 metres and E 283 279.200 metres;

THENCE running along the western limit of a fifteen (15) metre road reservation, south thirty three degrees forty five minutes twenty eight seconds east (S33°45'28"E) for a distance of thirty six decimal three eight three (36.383) metres;

THENCE turning and running along Lot # 183 south fifty nine degrees twenty four minutes forty eight seconds west (S59°24'48"W) for a distance of one hundred fifty three decimal nine six two (153.962) metres;

THENCE turning and running along the sinuosity's of a fifteen (15) metre reservation for Little Gull Pond, north nineteen degrees eighteen minutes forty seconds west (N19°18'40"W) for a distance of ten decimal five seven six (10.576) metres; **thence** north forty one degrees forty five minutes twenty nine seconds east (N41°45'29"E) for a distance of seventy decimal three three one (70.331) metres;

THENCE turning and running along Lot #185 north fifty six degrees thirteen minutes zero nine seconds east (N56°13'09"E) for a distance of eighty two decimal nine nine three (82.993) metres; more or less, to the **Point of Beginning**.

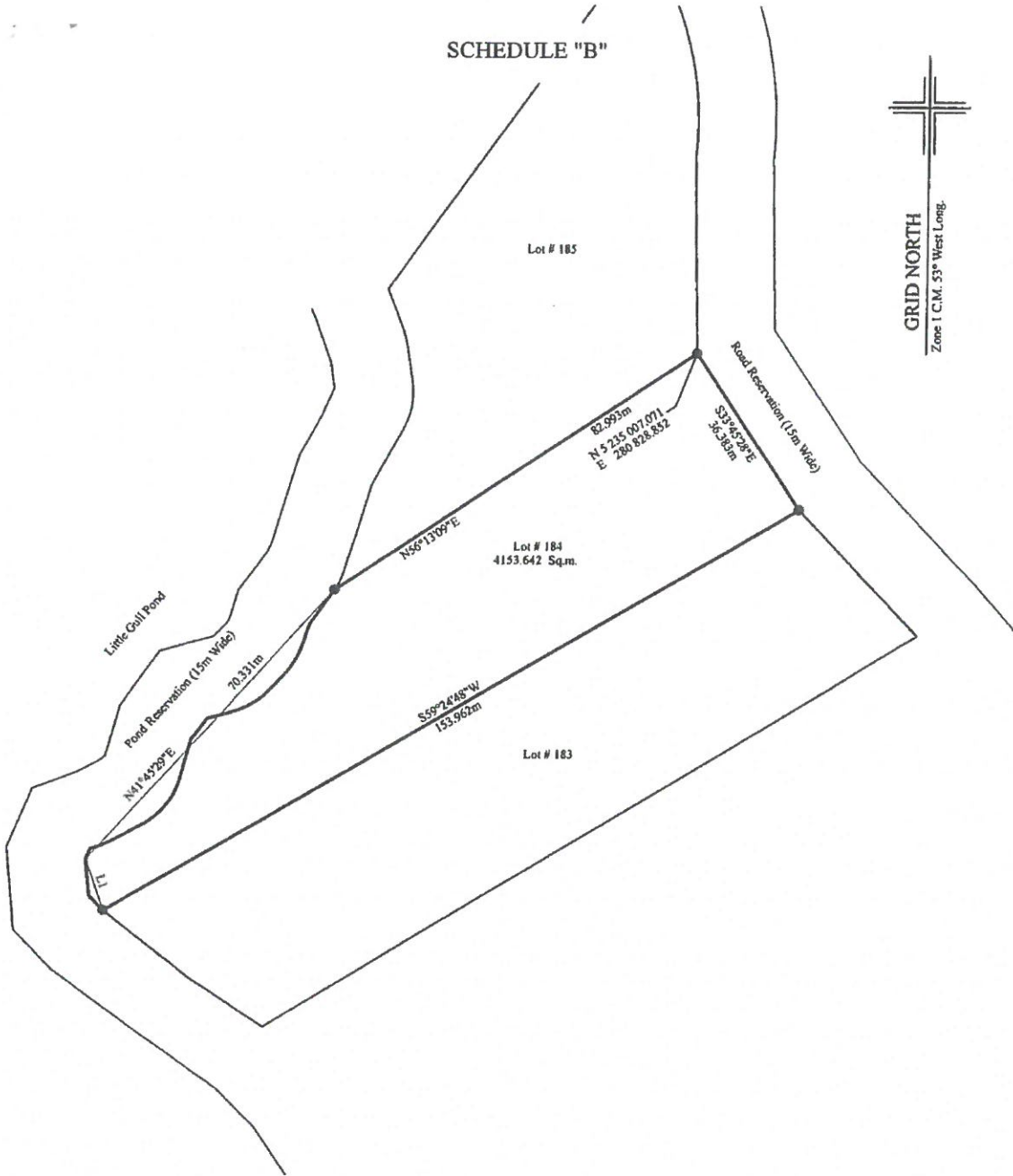
All bearings are Grid North NAD83 in Zone 1 of the Transverse Mercator Projection as modified for the Province of Newfoundland;

The above described piece or parcel of land contains an area of 4153.642 square metres, more or less, and is more particularly shown on the drawing hereto attached dated 24 07 2015.

This description and accompanying plan are integral parts necessary to adequately reflect the legal boundary of the subject property and therefor invalid if separated.



SCHEDULE "B"



LINE	BEARING	DISTANCE
L1	N19°18'40\"W	10.576m

MONUMENTS USED:(NAD 83)

	NORTHING	EASTING
91008	5 235 159.049	282 467.294
83G3458	5 236 107.125	283 279.200

LEGEND:

- A. = anchor
- = capped iron pin
- o.h.w. = overhead wire
- P. = pole

NOTE: ALL DISTANCES ARE HORIZONTAL GROUND

DATE: July 24, 2015
PROJECT NO: 001-15-E



SCALE : 1:1000