



THE NEWFOUNDLAND GAZETTE

PART I

PUBLISHED BY AUTHORITY

Vol. 76

ST. JOHN'S, FRIDAY, JULY 20, 2001

No.29

URBAN AND RURAL PLANNING ACT

TOWN OF GRAND BANK
MUNICIPAL PLAN AMENDMENT NO. 1, 2000
AND
DEVELOPMENT REGULATIONS AMENDMENT
NO. 1, 2000
NOTICE OF APPROVAL

TAKE NOTICE that the Honourable Oliver Langdon, Minister of Municipal and Provincial Affairs, has approved the Town of Grand Bank Municipal Plan Amendment No. 1, 2000, and Development Regulations Amendment No. 1, 2000, made and made and adopted pursuant to the *Urban and Rural Planning Act*, by the Council of the Town of Grand Bank, on the 18th day of December, 2000.

The purpose of the Amendment is to change the designation of land south of Grandview Boulevard (Route 220, Highway By-Pass) from "Highway Commercial" and "Conservation" to "Public Buildings" in order to accommodate the development of a new regional health care facility. A road reservation in the area is also realigned.

For the actual wording of the Amendments, the approved amendment documents should be consulted.

These Amendments come into effect on the day of publication of this notice in *The Newfoundland Gazette*, and any person who wishes to inspect a copy of them may do so at the Town Office, Grand Bank, or at the Urban and Rural Planning Division, Department of Municipal and Provincial Affairs, Confederation Building, West Block, St. John's, Newfoundland.

S.N. CLINTON, M.C.I.P.
Director, Urban and Rural Planning

Jul 20

TRUSTEE ACT ESTATE NOTICE

IN THE MATTER OF the Estate and Effects of John Cornish, late of the Town of Gander, in the Province of Newfoundland, Air Traffic Controller, deceased.

All persons claiming to be creditors of or who have any claims or demands upon or affecting the Estate of John Cornish, the aforesaid deceased, who died at the Town of Gander, in the Province of Newfoundland on or about the 9th day of December, 2000, are hereby requested to send particulars thereof in writing, duly attested, to the undersigned Solicitor for the Executrix of the Estate on or before 24th day of August, 2001, after which date the Executrix will proceed to distribute the said Estate having regard only to the claims of which she shall then have had notice.

DATED at Gander, Newfoundland, this 11th day of July, 2001.

CHRISTOPHER E. GILL
Solicitor for the Executrix

ADDRESS FOR SERVICE:
P. O. Box 461
218 Airport Boulevard
Gander, Newfoundland
A1V 1W8

Jul 20

CITY OF ST. JOHN'S ACT



ST. JOHN'S MUNICIPAL COUNCIL
NOTICE
ST. JOHN'S MUNICIPAL ELECTIONS
VOTE BY MAIL BY-LAW

TAKE NOTICE that the St. John's Municipal Council has enacted the St. John's Municipal Elections Vote By -Law.

The said By-Law was passed by Council on the 10th day of July, 2001 and will have the effect of establishing procedure for vote by mail in the municipal elections within the City of St. John's.

All persons are hereby required to take notice that any person who wishes to view such By-Law may view same at the Office of the City Clerk of the St. John's Municipal Council at City Hall, and that any person who wishes to obtain a copy thereof may obtain it at the said office upon the payment of a reasonable charge as established by the St. John's Municipal Council for such copy.

Dated this 11th day of July, 2001.

DAMIAN RYAN
City Clerk

Jul 20

ST. JOHN'S MUNICIPAL ELECTIONS
VOTE BY MAIL BY-LAW

Pursuant to the powers vested in it under the *Municipal Elections Act*, S.N. 2001, c. M-20.2 as amended and all other powers enabling it, the City of St. John's enacts the following By-Law relating to the conduct of municipal elections within the City of St. John's.

ST. JOHN'S MUNICIPAL ELECTIONS BY-LAW

1. This By-Law may be cited as the St. John's Municipal Elections Vote By Mail By-Law.
2. The Returning Officer shall:

- (1) appoint in writing, election officials as may be required to conduct the municipal election;
 - (2) establish and maintain a secure vault into which the Return Envelopes and the Ballot Envelopes shall be placed until the time specified for the counting of ballots;
 - (3) establish and maintain until 8:00 p.m. on election day a site for the deposit of Return Envelopes and Ballot Envelopes;
 - (4) establish and maintain an Elections Office for corrections and additions to or deletions from the Voter's List.
3. The Returning Officer shall provide, in addition to the site required in section 2(3), a minimum of 1 additional site in each of the five (5) wards for the deposit of Return Envelopes and Ballot Envelopes. Such additional sites shall be accessible only between 8:00 a.m. and 8:00 p.m. on election day and shall be supervised by elections officials as determined by the Returning Officer.
 4. (1) The procedures for the conduct of the municipal election are specified in Appendix A, hereto annexed, which forms part of this By-Law.
(2) Notwithstanding the foregoing, the Returning Officer, may, with prior Ministerial approval, vary the procedures from time to time as he deems appropriate to ensure the efficiency and integrity of the municipal election.
(3) Persons appointed by the Returning Officer as election officers shall carry out their duties as specified in the procedures contained in Appendix A.
 5. A Voter's Kit shall be mailed to each eligible voter and shall contain the following:
 - (i) Voting Instruction Sheet;
 - (ii) Voter Declaration Form;
 - (iii) Ballot;
 - (iv) Return Envelope;
 - (v) Ballot Envelope; and
 - (vi) Such further enclosures as the Returning Officer may deem necessary or appropriate.
 6. Each voter has the responsibility of completing their ballot in accordance with all applicable legislation and returning it to the Returning Officer by mail or personal delivery by 8:00 p.m. on election day.

7. Sections 26, 27 and 34 of the *Municipal Elections Act*, S.N. 2001, c. M-20.2 shall have no application to a municipal election in the City of St. John's.
8. The City of St. John's shall enter into a contract with Canada Post Corporation for the provision of its Electronic Lettermail one-stop, vote by mail service.
9. Any person who contravenes this By-Law shall be guilty of an offence and liable upon conviction to a penalty as provided in the *Municipal Elections Act*, S.N. 2001, c. M-20.2.

IN WITNESS WHEREOF the Seal of the City of St. John's has been hereunto affixed and this By-Law has been signed by the Mayor and City Clerk this 10th day of July, 2001.

ANDY WELLS
Mayor

DAMIAN RYAN
City Clerk

Jul 20

APPENDIX A TO
ST. JOHN'S MUNICIPAL BY LAW
RESPECTING VOTE BY MAIL FOR MUNICIPAL
ELECTIONS

PROCEDURE FOR THE CONDUCT OF A VOTE BY
MAIL ELECTION IN THE CITY OF ST. JOHN'S

1. Not later than two weeks prior to the close of the Nomination Period, an Information Mail Out for "Vote By Mail" will be sent to all residential units in the City of St. John's.
2. The official "Voter's Kit" will be sent to all enumerated Voters not later than 10 days after the close of the Nomination Period.
3. Immediately upon receipt of the Voter's Kit, a Voter may return his/her Return Envelope and Ballot Envelope by mail in accordance with the final deadline - as determined by Canada Post Corporation - which will ensure delivery to the City of St. John's by 8:00 p.m. on Election Day.
4. Voters will also have the option to drop their Return Envelope and Ballot Envelope into the Drop Off Center at City Hall 24 hours a day up to 8:00 p.m. Election Day.
5. Voters who do not need to be sworn in may drop their Return Envelope and Ballot Envelope into either Satellite Drop Off Center between 8:00 a.m. to 8:00 p.m. on Election Day. The Returning Officer shall determine

the number of Satellite Drop Off Centers that may be set up for Election Day.

6. To ensure prompt delivery of all Return Envelopes to the appropriate location, a separate Postal Box shall be secured and shall remain separate from any and all other postal addresses utilized by the City of St. John's.
7. Immediately following the distribution of Voters' Kits to the electorate, the Returning Officer shall put in place the necessary personnel for the tracking of which Voters have returned their Ballot Envelopes. The attached Organizational Chart 1 provides an overview of the anticipated staffing required for this function prior to Election Day.
8. The necessary personnel shall be contracted for manning the Satellite Drop Off Centers as per the attached Organizational Chart 5.
9. Prior to Election Day, Election Personnel per the attached Organization Chart 1, will be housed at City Hall, and will carry out the following duties up to and including Election Day:
 - (a) Immediately upon receipt of the Return Envelopes the Mail Clerks shall open all returns, separate the Voter Declaration Form from the Ballot Envelope, forward the Voter Declaration Form to the Data Entry Clerk and place the Ballot Envelope in the appropriate secure Ward Container.
 - (b) Clerks shall be retained to bundle all Ballot Envelopes into allotments of 100 envelopes and affix a Composite Tally Sheet to each bundle. No Ballot Envelopes will be opened at this time. All Ballot Envelopes will be retained in the appropriate Ward Container in the Secure Vault until counting begins on Election Day.
 - (c) Data Entry Clerks shall receive the Voter Declaration Forms and shall enter same into the computerized Voters List, which will then indicate the voter has cast his or her ballot. The Voter Declaration Forms, when keyed, shall be placed in a Secure Vault, sorted by Ward.
 - (d) Non Delivered Voters Kits: All Voters Kits will be imprinted with "RETURN TO SENDER IF UNDELIVERED TO ADDRESSEE". Upon receipt of these returned non-delivered Kits, the Data Entry Clerks will make the necessary adjustment to the Voters List to advise that the Voters Kit has been returned to the Election Office. All returned Voters' Kits in this category will be held in the Secure Vault at City Hall.
 - (e) At the close of each business day, up to the date of the Election, all election materials including all

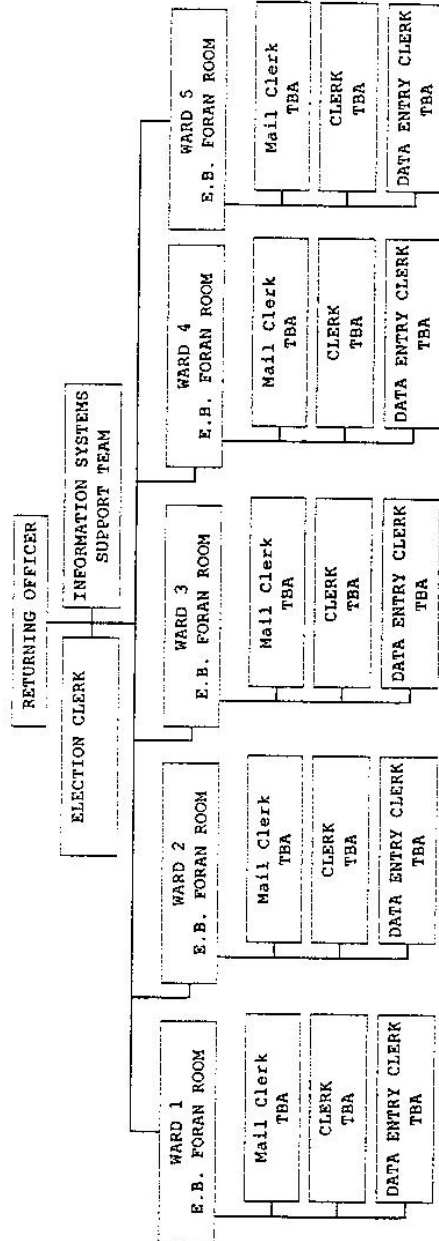
- unopened Return Envelopes will be placed in the Secure Vault at City Hall.
- (f) Should the Returning Officer deem it appropriate security personnel shall monitor the Secure Vault around the clock from the date of the initial return of Ballot Envelopes up to and including Election Day.
10. Under the direction of the Returning Officer the personnel as described on the attached Organizational Chart # 3 shall be in place for Election Day.
11. The areas designated as Counting Areas on Election Day shall be closed to all personnel other than those necessary for the conduct of the count of Ballots and security personnel shall be posted at each Counting Area to ensure restricted entry and secrecy of the results is maintained until 8:00 p.m. on Election Day. Election Staff will be sequestered in the Counting Rooms on Election Day from the commencement of the count until all Ballots have been opened and counted.
12. Access to Counting Areas shall be at the discretion of the Returning Officer and shall require an approved Access Pass.
13. No communications and/or electronic equipment of any type shall be allowed in the Counting Areas at any time during the counting of Ballots.
14. In addition to Security personnel, a Supervisor shall be posted in each Counting Area on Election Day to ensure that no unauthorized personnel shall enter/exit the Counting Area. He/she shall also liaise directly with the Returning Officer on any questions/problems which may arise in his or her respective Counting Area.
15. A Ward Captain shall be appointed to oversee the counting of all Ballots for each Ward and shall compile the Master Composite Tally Sheet during the counting of Ballots for his/her Ward.
16. On Election Day, at the discretion of the Returning Officer, additional Data Entry Clerks may be employed to assist in maintaining an accurate account of Returned Envelopes and recording the names of those who have voted.
17. On Election Day each Ward shall be assigned a minimum of five "Counting Teams" of 2 persons per team (10 people) who shall proceed to count the Ballots. The counting of Ballots shall commence at a time determined by the Returning Officer and will continue until all ballots have been counted. The time that counting will commence will be announced by the Returning Officer no later than 10:00 a.m. the day before Election Day.
18. A final Canada Post pick up will take place at 8:00 p.m. on Election Day, under the direction and control of the Returning Officer and the Return Envelopes obtained at that time shall be brought directly to City Hall for distribution to the appropriate Counting Area.
19. All Return Envelopes received at Canada Post after 8:00 p.m. on Election Day, shall be date and time stamped by Canada Post and returned to the City of St. John's where they will be retained in the Secure Vault pending any recount.
20. The counting of Ballots shall proceed as follows:
- (a) One bundled set of ballots (100 per bundle) shall be counted at a time and the accompanying Composite Tally Sheet and Statement of Poll shall be completed as the count is conducted.
- (b) When the tabulation of votes has been completed for a bundle, one copy of the Composite Tally Sheet and Statement of Poll shall be attached to the counted bundle of ballots and placed in a Ballot container assigned to the Ward. A duplicate copy of the Composite Tally Sheet and Statement of Poll shall be passed to the Ward Captain.
- (c) Upon receipt of the Composite Tally Sheet and Statement of Poll from a Counting Team, the Ward Captain shall enter the results of the count on a Master Statement of Poll. This process shall continue until all Ballots received for the Wards have been counted and reported to the Ward Captains.
- (d) At a time, as determined by the Returning Officer and after 8:00 p.m. on Election Day, the "First Count" of all Wards as tabulated on the Master Statement of Poll will be provided to the Results Runner(s) by the appropriate Supervisor. These results will be relayed, in confidence, to the Information Services Support Team and the results will be made available to the public (see Organizational Chart 2).
- (e) Following the release of the "First Count" on Election Day any additional count results will be relayed to the Information Services Support Team on a continuing basis until all Ballots have been counted and the election results have been declared by the Returning Officer.
21. The following procedure will be used in "Satellite Drop Off Centers":
- (a) The Satellite Drop Off Center shall open at 8:00 a.m. and close at 8:00 p.m. on Election Day.
- (b) Each Satellite Drop Off Center shall be staffed by not less than 2 Deputy Returning Officers. The Deputy Returning Officers will be empowered to

- swear in Voters who are not on the Voters List, and who provide the necessary identification as per Form C (see enclosure).
22. Each Satellite Drop Off Center will be provided with the following:
- (a) a copy of the Voters List as updated to the close of the business day immediately preceding Election Day, for the applicable Ward,
 - (b) a supply of Voters Kits for the applicable Ward.
 - (c) a supply of Form C - Declaration of Qualification of Voter
 - (d) Voting Screen (complete with Voters Instructions attached thereto),
 - (e) list of streets for the applicable Ward
 - (f) all necessary stationery supplies as required.
23. Eligible voters not included on the Voters list can be sworn in and receive their Voters Kit at the Election Office, City Hall from 9:00 a.m. to 4:30 p.m., Monday to Friday, up to the day immediately preceding Election Day upon providing the necessary identification. NO SWEARING IN OF VOTERS WILL TAKE PLACE AT CITY HALL ON ELECTION DAY.
24. On Election Day a voter not included on the Voters List MUST BE SWORN IN AT THE SATELLITE DROP OFF CENTER LOCATED IN HIS/HER OWN WARD.
25. (a) In the event a Voter is Sworn In at a Satellite Drop Off Center, the completed Form C will be held by the Deputy Returning Officer and the Voters Kit will be provided to the Voter.
- (b) After being sworn in the Voter shall then proceed to the screened area to complete the Voter Declaration Form and cast his/her Ballot as in a conventional election, but shall place his/her ballot paper in the "Ballot Envelope" and seal the envelope. He/she shall then place the Ballot Envelope and the Voter Declaration Form in the Return Envelope. Upon sealing the Return Envelope the Voter shall deposit it in the sealed Ballot Box provided.
26. Secure transport of Return Envelopes and Ballot Envelopes from Satellite Drop Off Centers to Election Central (City Hall) will be conducted under the supervision of the Returning Officer and will take place on a continuing basis until 8:00 p.m. on Election Day or until all Return Envelopes and Ballot Envelopes deposited by 8:00 p.m. on Election Day are collected.
27. All Return Envelopes from the Satellite Drop Off Centers will be sorted and tabulated at ElectionCentral in the same manner as those received through the postal system.
28. All completed Form C's taken at the Satellite Drop Off Centers will be transported to Election Central on a continual basis as with the Sealed Ballot Boxes. Upon arrival at Election Central, the Form C's will be deposited with Election Officials for input of the Voter's name on the Voters List.

Jul 20

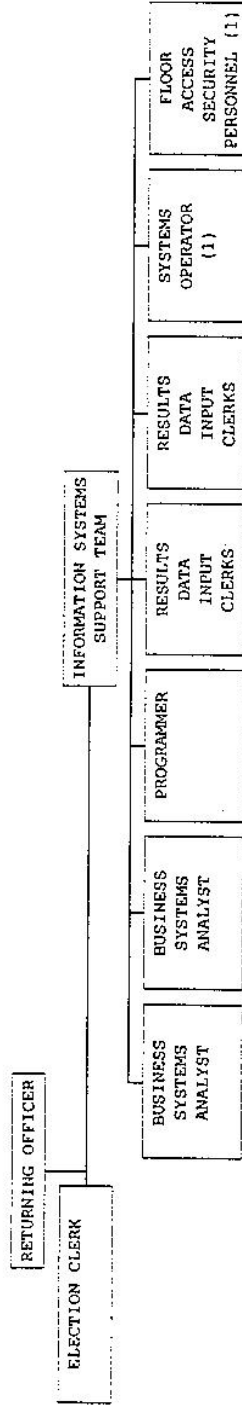
**ST. JOHN MUNICIPAL ELECTIONS
VOTE BY MAIL**

Chart 01: PRE-ELECTION DAY STAFFING REQUIREMENTS



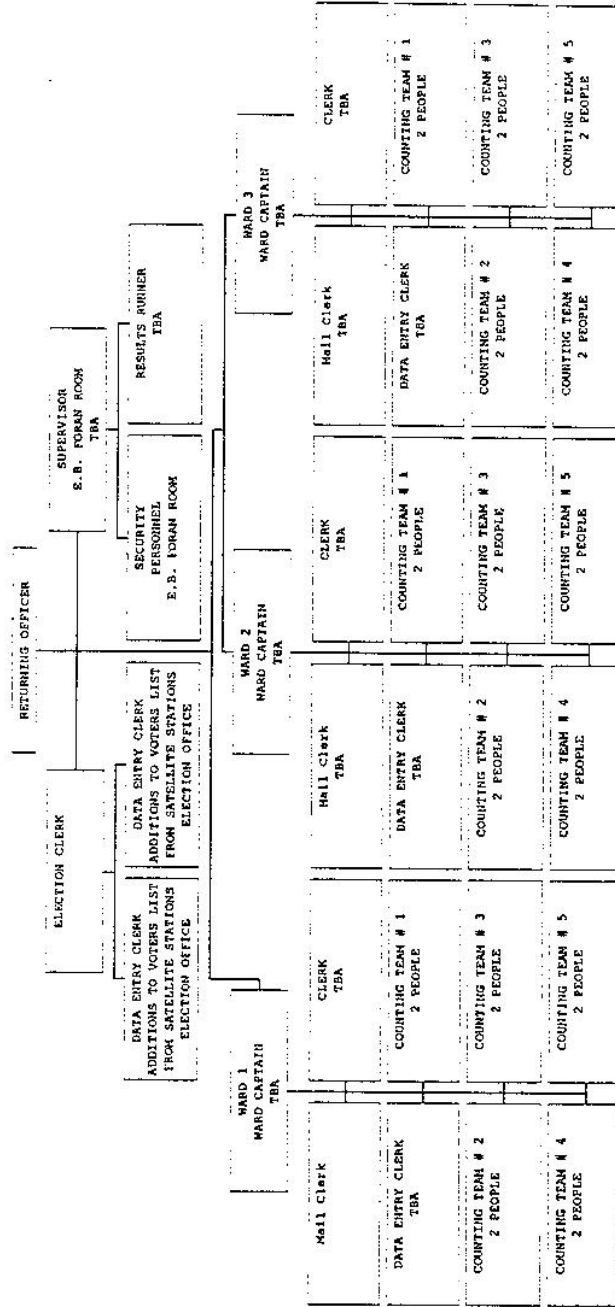
ST. JOHN'S MUNICIPAL ELECTIONS
VOTE BY MAIL

Chart 02: ELECTION DAY - INFORMATION SYSTEMS SUPPORT TEAM



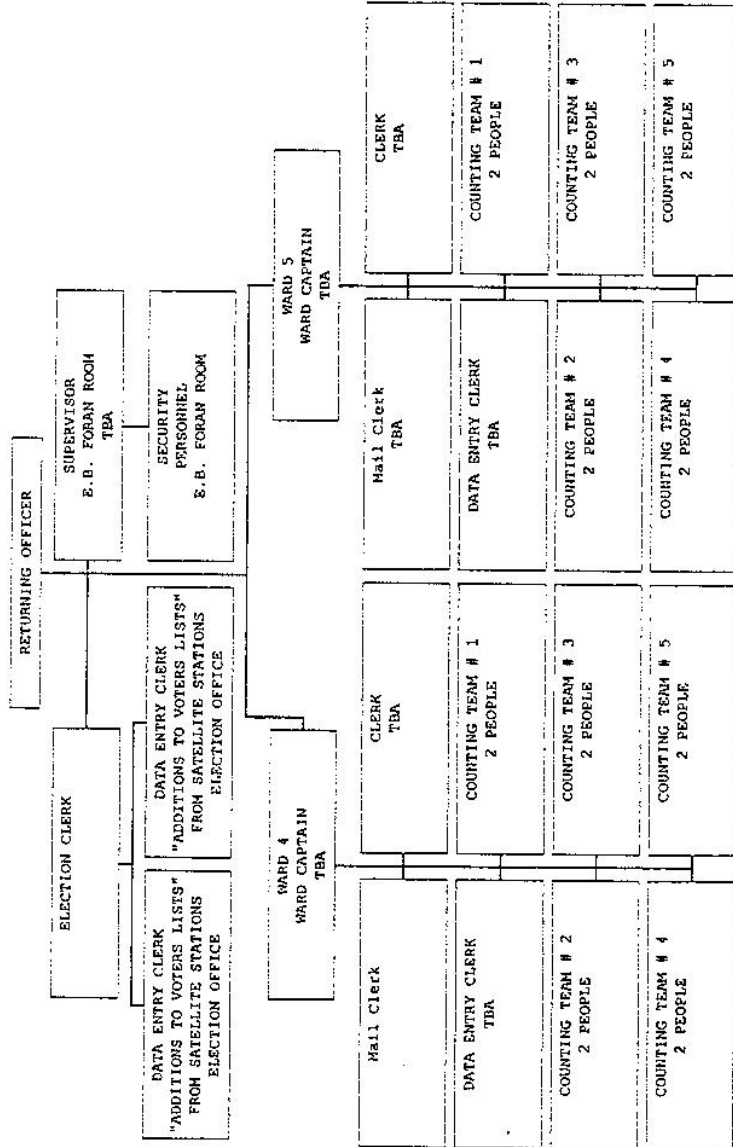
**ST. JOHN'S MUNICIPAL ELECTIONS
VOTE BY MAIL**

Chart 03: ELECTION DAY STAFFING REQUIREMENTS - E.B. FORAN ROOM



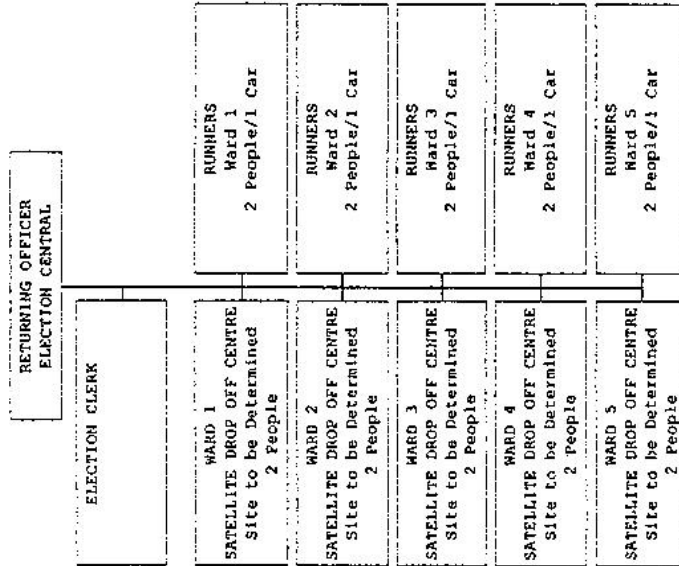
**ST. JOHN'S MUNICIPAL ELECTIONS
VOTE BY MAIL**

Chart 04: ELECTION DAY STAFFING REQUIREMENTS - CAHILL ROOM



**ST. JOHN'S MUNICIPAL ELECTIONS
VOTE BY MAIL**

Chart 05: ELECTION DAY STAFFING REQUIREMENTS -
SATELLITE DROP OFF CENTRES



QUIETING OF TITLES

2001 01T NO 1843

IN THE SUPREME COURT
OF NEWFOUNDLAND

TRIAL DIVISION

IN THE MATTER OF the *Quieting of Titles Act, R.S.N. 1990, Chapter Q-3, and amendments thereto;***AND IN THE MATTER OF all that piece or parcel of land situate and being south of Topsail Road, in the Town of Paradise, in the Province of Newfoundland;****AND IN THE MATTER OF an Application of Thomas Sharpe and Sandra Sharpe of the Town of Paradise, in the Province of Newfoundland**

NOTICE OF APPLICATION

NOTICE IS HEREBY GIVEN to all parties that Thomas Sharpe and Sandra Sharpe, of the Town of Paradise, in the Province of Newfoundland, as owner (hereinafter called "the owner") has applied to the Supreme Court of Newfoundland to have investigated All THAT piece or parcel of land situate and being to the south of Topsail Road, in the Town of Paradise, in the Province of Newfoundland, Canada, the same being more particularly described and outlined in Schedule "A" annexed hereto.

ALL PERSONS having title adverse to the said title claim by the owner shall file in the Registry of the Supreme Court of Newfoundland, Trial Division, St. John's, particulars of such adverse claim and serve the same together with the Affidavit verifying the same to the undersigned solicitors for the owner on or before the 16th day of August, 2001, after which date no party having any claim shall be permitted to file the same or to be heard except by leave of the Court and subject to such conditions as the Court may deem just. All adverse claims shall then be investigated in such a manner as the Supreme Court may direct.

DATED at St. John's, in the Province of Newfoundland, this 10th day of July, 2001.

PARSONS, ENNIS, SCOTT
Solicitors for the Applicant
PER: Annette E. Scott

ADDRESS FOR SERVICE:
280 Duckworth Street
P. O. Box 2430
St. John's, NF
A1C 6E7

Jul 20

SCHEDULE "A"

All that piece or parcel of land situate and being South of Topsail Road, in the Town of Paradise, in the Electoral District of Conception Bay East-Bell Island, in the Province of Newfoundland, Canada, bounded and abutted as follows, that is to say: Commencing at a point, the said point having T. M. Grid Co-ordinates (NAD 83) of N 5, 265,741.790 m and E 315,593.081 m with reference to Mount No. 83G3211 and Co-ordinates of N 5,265,862.149 m and E 315,081.711 m and Monument No. 026638 with Co-ordinates of N 5, 265,820.654 m and E 315,507.466 m;

THENCE running by land now or formerly of John Stuart South twenty nine degrees twenty six minutes twenty six seconds East five hundred forty eight decimal four four six metres;

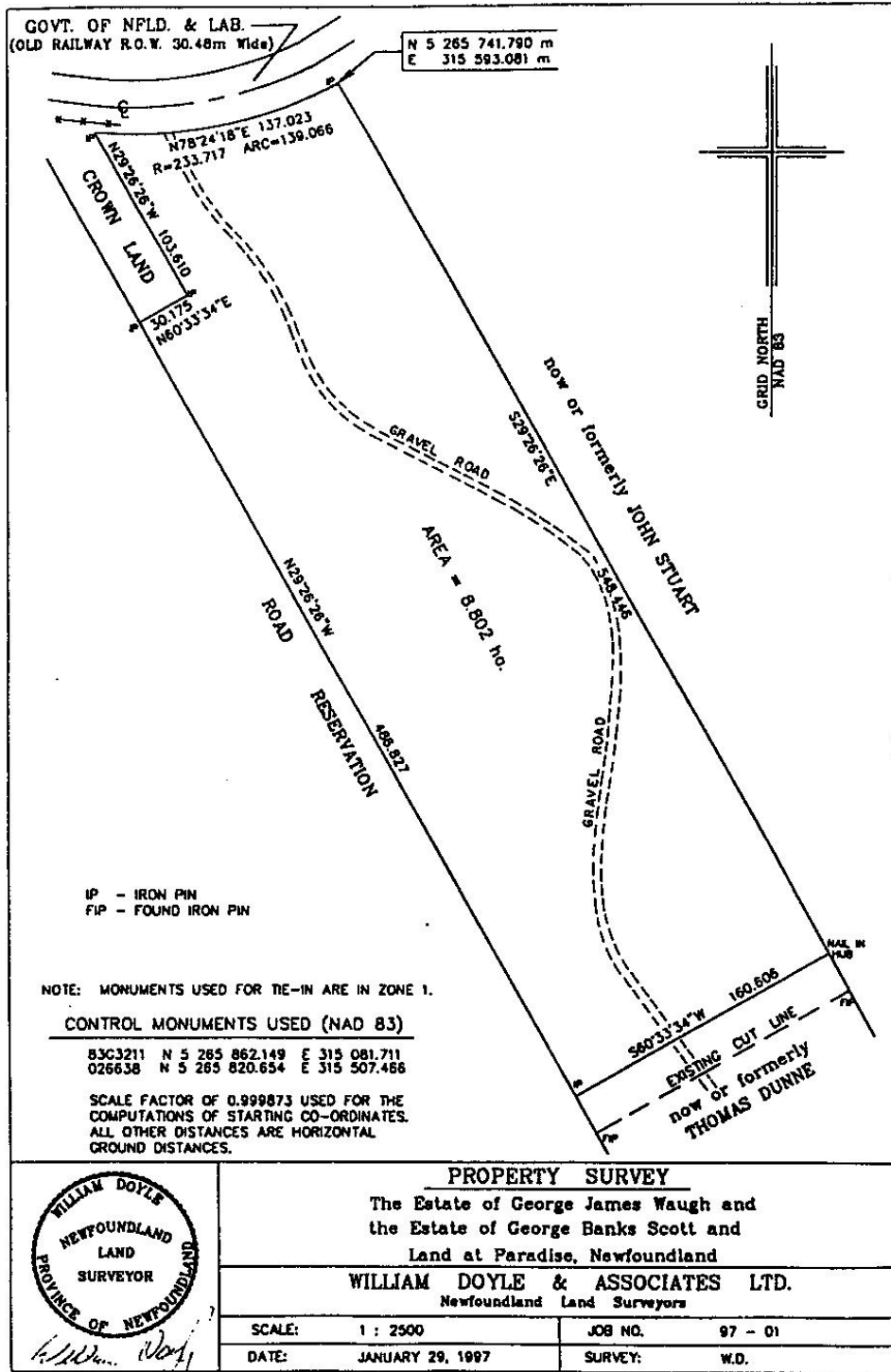
THENCE turning and running by land now or formerly of Thomas Dunne South sixty degrees thirty three minutes thirty four seconds West one hundred sixty decimal six zero six metres;

THENCE turning and running along the Northeastern Limits of a Road Reservation North twenty nine degrees twenty six minutes twenty six seconds West four hundred eighty six decimal eight two seven metres;

THENCE turning and running by Crown Land North sixty degrees thirty three minutes thirty four seconds East thirty decimal one seven five metres; THENCE North twenty nine degrees twenty six minutes twenty six seconds West one hundred three decimal six one zero metres;

THENCE turning and running by land of Government of Newfoundland and Labrador (Old Railway Right of Way, 30.48 metres wide) along the arc of a curve having a chord bearing and distance of North seventy eight degrees twenty four minutes eighteen seconds East one hundred thirty seven decimal zero two three metres and a radius of 233.717 metres and an arc distance of 139.066 metres, more or less, to the point of commencement and containing in all an area of 8.802 hectares as more particularly described on the plan hereto annexed.

ALL bearings are referred to Grid North.



CHANGE OF NAME ACT

C-8 RSN 1990

**NOTICE OF APPLICATION
FOR CHANGE OF NAME**

NOTICE is hereby given that an application will be made to the Minister of Government Services and Lands for a change of name, pursuant to the provisions of the *Change of Name Act*, by me:-

MARGARET PILGRAM

of P. O. Box 146, St. Lunaire-Griquet, A0K 2X0, in the Province of Newfoundland, as follows:

To change my minor unmarried child's name from

CANDACE ASTRA HEDDERSON

to

CANDACE ASTRA PILGRAM

DATED this 28th day of June, 2001.

MARGARET PILGRIM
(Signature of Applicant)

Jul 20

**NOTICE OF APPLICATION
FOR CHANGE OF NAME**

NOTICE is hereby given that an application will be made to the Minister of Government Services and Lands for a change of name, pursuant to the provisions of the *Change of Name Act*, by me:-

TRACY LYNN SHEPPARD

of Site 1, Box 5, RR #1, Noggin Cove, A0G 1N0, in the Province of Newfoundland, as follows:

To change my minor unmarried child's name from

DARRYL JOSH SHEPPARD-HANCOCK

to

DARRYL JOSH SHEPPARD

DATED this 4th day of June, 2001.

TRACY LYNN SHEPPARD
(Signature of Applicant)

Jul 20



THE NEWFOUNDLAND GAZETTE

PART II

SUBORDINATE LEGISLATION

FILED UNDER THE STATUTES AND SUBORDINATE LEGISLATION ACT

Vol. 76

ST. JOHN'S, FRIDAY, JULY 20, 2001

No. 29

NEWFOUNDLAND REGULATIONS

48/01

49/01



NEWFOUNDLAND REGULATION 48/01

Social Assistance Regulations (Amendment)
under the
Social Assistance Act
(O.C. 2001-340)

(Filed July 16, 2001)

Under the authority of section 30 of the *Social Assistance Act*, the Lieutenant-Governor in Council makes the following regulations.

Dated at St. John's, July 7, 2001.

Deborah E. Fry
Clerk of the Executive Council

REGULATION

Analysis

- | | |
|--|--|
| 1. S.6(1) Amdt.
Maximum monthly
assistance | 2. S.29(1) R&S
Rate of remuneration |
|--|--|

CNR 1027/96
as amended

1. (1) Paragraph 6(1)(a) of the *Social Assistance Regulations* is repealed and the following substituted:

(a) a family or single benefit for food, clothing, personal care, fuel, household maintenance and utilities

1 adult with no dependent children \$421

1 adult	with dependent children	556
2 adults	with or without dependent children	596
3 adults	with or without dependent children	692
4 adults	with or without dependent children	788

(2) Paragraphs 6(1)(c) and (d) of the regulations are repealed and the following substituted:

(c) where the landlord or landlady is not a relative, for shelter, food, clothing and personal care

1 adult	with no dependent children	\$399
1 adult	with dependent children	556
2 adults	with or without dependent children	596
3 adults	with or without dependent children	692
4 adults	with or without dependent children	788

(d) where the landlord or landlady is a relative, for shelter, food, clothing and personal care

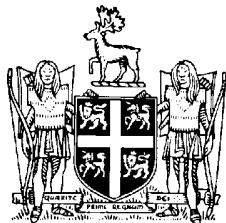
1 adult	with no dependent children	\$254
1 adult	with dependent children	458
2 adults	without dependent children	505
2 adults	with dependent children	596
3 adults	with or without dependent children	692
4 adults	with or without dependent children	788

2. Subsection 29(1) of the regulations is repealed and the following substituted:

Rate of remuneration

29. (1) The rate of remuneration for members of the appeal board for meetings convened under the Act and the regulations shall be in accordance with the rates of remuneration for boards, commissions and agencies as set by the Treasury Board.

©Earl G. Tucker, Queen's Printer



NEWFOUNDLAND REGULATION 49/01

Newfoundland T’Railway Provincial Park Proclamation (Amendment)
under the
Provincial Parks Act

(Filed July 17, 2001)

Under the authority of subsection 4(2) of the *Provincial Parks Act*, I make the following Order.

Dated at St. John’s, July 17, 2001.

Kevin Aylward
Minister of Tourism, Culture and Recreation

ORDER

Analysis

1. Sch. Amdt.

NR 93/97
as amended

1. (1) The Schedule to the *Newfoundland T’Railway Provincial Park Proclamation* is amended by striking out the words and colon "The area described in this Schedule is decreased by removing the following area:" and substituting the words "The area described in this Schedule is decreased by removing the following parcels of land:"

(2) The Schedule to the Proclamation is further amended by inserting the number and title "1. Ocean Pond Parcel" immediately before the words "All that piece or parcel of land".

(3) The Schedule to the Proclamation is further amended by adding at the end of the Schedule the following:

2. Ocean Pond Parcel (No. 2)

Also, all that piece or parcel of land being a portion of the former Canadian National Railway mainline right of way as shown on Special Plan No. 22 in the Registry of Crown Titles, situated and being at Ocean Pond in the Electoral District of Harbour Main-Whitbourne;

More particularly described as a strip of land 15.24 metres wide running parallel to and being perpendicularly distant 7.62 metres on each side of the centreline of the railway right of way;

Commencing at a point on the centreline at the mile 48 marker;

Then running along the centreline in a generally northwesterly and a westerly direction to another point on the centreline at the mile 50 marker as shown on Special Plan No. 22.

3. Bishop's Falls Parcel

Also, all that piece or parcel of land situate and being at Bishop's Falls, in the Electoral District of Exploits, abutted and bounded as follows:

Commencing at a point, that point being distant 386.64 metres as measured on a bearing of north 25° 28' 34" east from Control Station 76G2194;

Then along Crown Land applied for by the Town of Bishop's Falls (App. No. C-113115), north 62° 3' 8" east for 534.46 metres;

Then along Crown Land applied for by Parks & Natural Areas Division (Dept. of Tourism, Culture & Recreation - App. No. C-113478), south 10° 42' west for 19.21 metres;

Then along Crown Land applied for by the Town of Bishop's Falls (App. No. C-113115), south 62° 3' 8" west for 505.89 metres;

Then along Crown Land applied for by Parks & Natural Areas Division (Dept. of Tourism, Culture & Recreation - App. No. C-113478), north 75° 48' west for 22.36 metres to the point of commencement.

Containing in all an area of 0.780 hectares.

The above described parcel of land being subject to a 5.5 metres wide utility easement extending through the land as shown on a plan available for viewing at the Department of Tourism, Culture and Recreation.

All bearings refer to the Meridian of 56° west Longitude in the 3° Modified Transverse Mercator Projection (Zone 2 - NAD83).

4. Paradise Parcel

Also, all that piece or parcel of land situated and being on the northwest side of the Trans Canada Highway, in the Town of Paradise, Newfoundland, bounded and abutted as follows:

Commencing at a point having T.M. Co-ordinates (NAD 83) of north 5,265,763.416 metres and east 317,117.715 metres with reference to Monument No. 80G2177 with co-ordinates of north 5,265,505.330 metres and east 317,858.352 metres and Monument No. 80G2178 with co-ordinates of north 5,265,901.667 metres and east 317,272.900 metres;

Then running along the northwestern limits of the Trans Canada Highway south 20° 34' 22" west for 8.253 metres;

Then turning and running by land of the Government of Newfoundland and Labrador north 65° 46' 48" west for 8.076 metres;

Then south 49° 05' 13" west for 13.064 metres;

Then turning and running by land of Chester Dawe Limited north 45° 43' 45" west for 73.356 metres;

Then along the arc of a curve having a chord bearing and distance of north 56° 01' 12" west for 109.407 metres, and a radius of 306.215 metres;

Then turning and running by land of the Government of Newfoundland and Labrador (Abandoned Railway) north 23° 36' 32" east for 22.860 metres;

Then turning and running by land of Chester Dawe Limited along the arc of a curve having a chord bearing and distance of south 56° 01' 22" east 117.606 metres and a radius of 329.075 metres;

Then south 45° 43' 45" east 63.322 metres, more or less, to the point of commencement;

Containing in all an area of 0.402 hectares.

All bearings refer to grid north.

5. Howley Parcel

Also all that piece or parcel of land situate and being east of Howley in the Electoral District of Humber Valley, being a strip of land 30.48 metres wide, lying between two parallel lines and being perpendicularly distant 15.24 metres on either side of a centre line, more particularly described as follows:

Commencing at a point in the easterly limit of Route 401, 30 metres wide, at Howley, being the point of intersection of the said limit with the centre line of the former Canadian National Railway line;

Then running along the former centre line in general northeasterly and southeasterly directions for a distance of approximately 22 kilometres to the point of intersection of the former centre line with the centre of the bridge spanning Kitty's Brook;

Containing in all an area of 67 hectares, more or less;

All bearings refer to grid north.

The area described in this Schedule is increased by adding the following parcels of land:

1. Bishop's Falls Parcel (No. 2)

All that piece or parcel of land situate and being at Bishop's Falls, in the Electoral District of Exploits, abutted and bounded as follows:

Commencing at a point which measures 218.52 metres on a bearing of north 28° 18' 1" west from Control Station 76G2194;

*Newfoundland T'Railway Provincial Park
Proclamation (Amendment)*

49/01

Then along Main Street, north 36° 36' west for 14.75 metres;

Then along Crown Land, north 62° 33' east for 314.07 metres;

Then along Crown Land (App. No. C-113115), south 75° 48' east for 42.44 metres;

Then along Crown Land (App. No. C-113115), south 71° 47' east for 41.82 metres;

Then along Crown Land (App. No. C-113115), south 65° 31' east for 51.6 metres;

Then along Crown Land (App. No. C-113115), north 65° 54' east for 66.17 metres;

Then along Crown Land (App. No. C-113115), north 21° 45' west for 12.2 metres;

Then along Crown Land (App. No. C-113115), north 35° 39' east for 82.61 metres;

Then along Crown Land (App. No. C-113115), north 57° 37' 40" east for 108.96 metres;

Then along Crown Land (App. No. C-113115), north 53° 6' east for 124.99 metres;

Then along Crown Land (App. No. C-113115), north 60° 40' east for 48.28 metres;

Then along Crown Land (App. No. C-113115), north 10° 42' east for 33.42 metres;

Then along property of Lorenzo Burt, north 63° 15' east for 53.62 metres;

Then along Crown Land (App. No. C-113115), north 67° 50' east for 23.33 metres;

Then along Crown Land (App. No. C-113115) and Crown Land, north 60° 49' 30" east for 182.16 metres;

Then along Crown Land, north $33^{\circ} 46' 10''$ east for 125.11 metres;

Then along the arc of a curve having a radius of 139.595 metres (Crown Land), to a point which bears north $50^{\circ} 17' 15''$ east for a straight line distance of 79.38 metres;

Then along the arc of a curve having a radius of 139.595 metres (Crown Land), to a point which bears north $83^{\circ} 19' 22''$ east for a straight line distance of 79.38 metres;

Then along the arc of a curve having a radius of 139.595 metres (Crown Land), to a point which bears south $63^{\circ} 38' 30''$ east for a straight line distance of 79.38 metres;

Then along the arc of a curve having a radius of 139.595 metres (Crown Land), to a point which bears south $30^{\circ} 36' 20''$ east for a straight line distance of 79.37 metres;

Then along Crown Land, south $14^{\circ} 5'$ east for 20 metres;

Then along the shoreline of the Exploits River, south $75^{\circ} 55'$ west for 15 metres;

Then along Crown Land, north $14^{\circ} 5'$ west for 20 metres;

Then along the arc of a curve having a radius of 124.595 metres (Crown Land), to a point which bears north $30^{\circ} 36' 20''$ west for a straight line distance of 70.85 metres;

Then along the arc of a curve having a radius of 124.595 metres (Crown Land), to a point which bears north $63^{\circ} 38' 30''$ west for a straight line distance of 70.85 metres;

Then along the arc of a curve having a radius of 124.595 metres (Crown Land), to a point which bears south $83^{\circ} 19' 22''$ west for a straight line distance of 70.85 metres;

Then along the arc of a curve having a radius of 124.595 metres (Crown Land), to a point which bears south $50^{\circ} 17' 15''$ west for a straight line distance of 70.85 metres;

Then along Crown Land and Crown Land (App. No. C-113115), south $33^{\circ} 46' 10''$ west for 126.79 metres;

*Newfoundland T'Railway Provincial Park
Proclamation (Amendment)*

49/01

Then along property of Elsie Hutchings, south 64° 25' west for 15.53 metres;

Then along property of Elsie Hutchings and property of Harold Penton, south 61° 22' west for 48.16 metres;

Then along Crown Land (App. No. C-113115), south 59° 42' 28" west for 122.79 metres;

Then along property of Edward Mills, south 67° 50' west for 23.59 metres;

Then along property of Edward Mills and property of Inez Antle, south 63° 15' west for 50.28 metres;

Then along property of Inez Antle, south 10° 42' west for 33.16 metres;

Then along River bank, south 60° 40' west for 51.58 metres;

Then along River bank, south 53° 6' west for 124.57 metres;

Then along River bank, south 57° 37' 40" west for 115.3 metres;

Then along the shoreline of the Exploits River, south 36° 5' west for 54.48 metres;

Then along River bank, to a point which bears south 11° west for a straight line distance of 31.85 metres;

Then along the shoreline of the Exploits River, south 65° 54' west for 75.69 metres;

Then along River bank, north 65° 31' west for 57.55 metres;

Then along River bank, north 71° 47' west for 40.47 metres;

Then along River bank and Crown Land, north 75° 48' west for 36.86 metres;

Then along Crown Land, property of Exploits Manor and Crown Land, south 62° 33' west for 305.54 metres to point of commencement.

Containing in all an area of 2.389 hectares.

The above described parcel of land being subject to utility easements (5.5 metres wide) extending through the land as shown on a plan available for viewing at the Department of Tourism, Culture and Recreation.

All bearings refer to grid north (Zone 2 - NAD8).

2. Paradise Parcel (No. 2)

Also that piece or parcel of land situate and being on the northwest side of the Trans Canada Highway, in the Town of Paradise, Newfoundland bounded and abutted as follows:

Commencing at a point having T.M. Grid Co-ordinates (NAD 83) of north 5,265,683.665 metres and east 317,147.782 metres with reference to Monument No. 80G2177 with co-ordinates of north 5,265,505.330 metres and east 317,858.352 metres and Monument No. 80G2178 with co-ordinates of north 5,265,901.667 metres and east 317,272.900 metres;

Then running along the northeastern limits of a brook south 88° 32' 0" west for 9.539 metres;

Then north 44° 01' 57" west for 7.566 metres;

Then north 41° 29' 58" west for 10.898 metres;

Then north 19° 46' 11" west for 35.764 metres;

Then north 75° 4' 05" west for 24.362 metres;

Then north 50° 28' 37" west for 17.560 metres;

Then north 68° 51' 24" west for 56.109 metres;

Then north 86° 59' 41" west for 9.250 metres;

Then north 48° 50' 34" west for 14.420 metres;

Then north 36° 24' 32" west for 9.104 metres;

Then turning and running by land of Principal Holdings Limited north 21° 59' 0" east for 71.957 metres;

Then turning and running by land of the Government of Newfoundland and Labrador (Abandoned Railway) along the arc of a curve having a chord bearing and distance of south 66° 19' 35" east 0.702 metres and a radius of 306.215 metres;

Then turning and running by land of Chester Dawe Limited south 05° 37' 41" west for 26.046 metres;

Then south 03° 19' 47" west for 26.946 metres;

Then south 36° 49' 10" east for 19.102 metres;

Then south 64° 03' 55" east for 117.234 metres;

Then north 49° 05' 13" east for 26.166 metres;

Then turning and running by land of the Government of Newfoundland and Labrador (Abandoned Railway) south 45° 43' 45" east for 14.074 metres;

Then turning and running along the northwestern limits of the Trans Canada Highway south 20° 34' 22" west for 60.218 metres, more or less, to the point of commencement;

Containing in all an area of 0.481 hectares.

All bearings refer to grid north.

©Earl G. Tucker, Queen's Printer

Index

PART I

Change of Name Act — Applications	335
City of St. John's Act — Notices	324
Quieting of Titles — Notice	333
Trustee Act — Notice	323
Urban and Rural Planning Act — Notice	323

PART II

CONTINUING INDEX OF SUBORDINATE LEGISLATION

Title of Act and Subordinate Legislation made thereunder	CNR or Nfld. Reg.	Amendment	Nfld. Gazette Date & Page No.
Provincial Parks Act			
Newfoundland T' Railway Provincial Park Proclamation (Amendment)	49/01	NR 93/97 Sch. Amdt.	Jul. 20/01, p. 271
Social Assistance Act			
Social Assistance Regulations (Amendment)	48/01	CNR 1027/96 Ss.6 & 29 Amdt.	Jul. 20/01, p. 269

The Newfoundland Gazette is published from the office of Earl G. Tucker, Queen's Printer.

Copy for publication must be received before **Friday, 4:30 p.m.**, seven days before publication, to ensure inclusion in next issue. Advertisements should be typewritten or printed legibly, separate from covering letter. Number of insertions required must be stated and the names of all signing officers typewritten or printed.

Advertising rates are available upon request. Subscription rate for *The Newfoundland Gazette* is \$125.00 for 52 weeks plus applicable tax (\$133.75). Weekly issues of \$3.00 per copy, plus tax payable in advance.

All cheques, money orders, etc., should be made payable to THE NEWFOUNDLAND EXCHEQUER ACCOUNT and all correspondence should be addressed to: Office of the Queen's Printer, P. O. Box 8700, Confederation Building, St. John's, Newfoundland A1B 4J6. Telephone: (709) 729-3649. Fax: (709) 729-1900.

Legislative History of the Judicature Act, 1791-1988

Price \$25.00 plus G.S.T.

(Plus \$2.00 postage and handling)

**Place your order by contacting: Office of The Queen's Printer,
Confederation Building, East Block, St. John's, Nfld. A1B 4J6.**

Telephone: (709) 729-3649 Fax: (709) 729-1900

**Government Information Product
Publication Rate Mail**

G.S.T. # R107442683

All requests for Subscription and Legislation MUST be prepaid.