



THE NEWFOUNDLAND AND LABRADOR GAZETTE

PART I
PUBLISHED BY AUTHORITY

Vol. 77

ST. JOHN'S, FRIDAY, OCTOBER 18, 2002

No. 42

CITY OF ST. JOHN'S ACT



ST. JOHN'S MUNICIPAL COUNCIL
NOTICE
THE ST. JOHN'S PARKING METER REGULATIONS
ST. JOHN'S TICKETING AMENDMENT BY-LAW
ST. JOHN'S STREET CLEANING BY-LAW
ST. JOHN'S RESIDENTIAL PARKING AREA BY-LAW
ST. JOHN'S SNOW CLEARING BY-LAW

TAKE NOTICE that the following By-Laws and Regulations have been enacted by the St. John's Municipal Council and remain in effect within the City of St. John's.

All persons are hereby required to take notice that any person who wishes to view such By-Laws and Regulation may view same at the Office of the City Solicitor of the St. John's Municipal Council at City Hall, and that any person who wishes to obtain a copy

thereof may obtain in at the said office upon the payment of a reasonable charge as established by the St. John's Municipal Council for such copy.

Dated this 10th day of October, 2002.

CITY OF ST. JOHN'S
Phyllis, Bartlett, Acting City Clerk

Oct 11

BY-LAW NO. 1439
ST. JOHN'S STREET CLEANING BY-LAW
PASSED BY COUNCIL ON APRIL 2, 2001

Under and by virtue of the powers conferred by Sections 188 and 189 of the *Highway Traffic Act*, R.S.N., 1990, Chapter H-3, and pursuant to a delegation of power by the Minister of Works, Services and Transportation dated the 27th day of April, 1990, the City of St. John's in regular session convened on this 2nd day of April, 2001, hereby passes and enacts the following By-Law relating to the control of parking for the purpose of facilitating street cleaning in the City of St. John's.

BY-LAW

1. This By-Law may be cited as the St. John's Street Cleaning By-Law.
2.
 - (1) No person shall park an unattended vehicle on a specified street between the hours of 12:01 A.M. (0001) and 7:00 A.M. (0700) on the dates designated by the Director of Public Works and Parks.
 - (2) The Director of Public Works and Parks shall cause a list of specified streets and the dates upon which they are to be designated in accordance with subsection (1) to be published in a daily or weekly newspaper in circulation in the City of St. John's.
3. When under this By-Law the parking of vehicles is prohibited on one side of a street, vehicles may, during the period when parking is so prohibited, be parked on the other side of the street, notwithstanding any direction to the contrary contained in signs erected on that side of the street.
4.
 - (a) The provisions of this By-Law shall not apply to vehicles of:
 - (i) the City of St. John's
 - (ii) the Royal Canadian Mounted Police
 - (iii) the Royal Newfoundland Constabulary.
 - (b) The provisions of this By-Law shall not apply on any Statutory Holiday proclaimed by the Lieutenant Governor in Council.
 - (c) The provisions of this By-Law shall not apply to any street or portion of a street which does not have asphaltic surface.
5.
 - (a) Any person who violates or contravenes any provision of this By-Law is guilty of an offence and is liable to a minimum fine of \$20.00 for each offence.
6. Offences under this By-Law may be prosecuted by means of a traffic ticket under the provisions of Part II of the *Provincial Offences Act*, P-31.1, S.N. 1995.
7. The 2000 St. John's Street Cleaning Regulations enacted by Council May 8, 2000 are repealed.

CITY OF ST. JOHN'S
City Clerk
P. O. # 45116

Oct 11

BY-LAW NO. 1440
ST. JOHN'S RESIDENTIAL PARKING AREA BY-LAW
PASSED BY COUNCIL ON MAY 14, 2001

Pursuant to the powers vested in it under the *City of St. John's Act*, R.S.N. 1990, c.C-17, as amended and all other powers enabling it, the City of St. John's enacts the following By-Law relating to the regulation of residential parking.

BY-LAW

1. This By-Law may be cited as the St. John's Residential Parking Area By-Law.
2. In this By-Law:
 - "City" means the City of St. John's;
 - "Designated Area" means an area of the City of St. John's designated by the City pursuant to this By-Law.
 - "Permit" means a parking permit issued pursuant to this By-Law and includes Standard Permits, Visitor Permits and Temporary Contractor Permits.
 - "Bona Fide Resident" means a permanent resident of a Designated Area who is a registered owner of a motor vehicle.
3. The City may by resolution of Council from time to time
 - (a) designate areas of the City of St. John's for the purpose of regulating the parking of motor vehicles; and
 - (b) designate within an area one or more on-street parking spaces for which parking of motor vehicles is prohibited 24 hours per day except under permit.
4. The areas and parking spaces designated by the City under Section 3 hereof shall be identified by appropriate signs which shall indicate that there is no parking anytime except under permit.
5.
 - (1) The City may issue to Bona Fide Residents of a Designated Area a Standard Permit to park a motor vehicle in that Designated Area.
 - (b) The City may issue to any business without off-street parking situated in a Designated Area one Standard Permit to park a motor vehicle in that Designated Area.
 - (c) The City may issue one Visitor Permit to each residential property in a Designated Area. Such Visitor Permit shall only be issued to a residential property owner who is a Bona Fide Resident and shall only be used to park a motor vehicle on the same street as the property of the Bona Fide Resident to which it is issued is situate.
 - (d) The City may issue to any property registered as an approved Bed and Breakfast in a Designated Area a maximum of four (4) Standard Permits to park motor vehicles in that Designated Area.
 - (e) The City may issue to a contractor a maximum of two (2) Temporary Contractor Permits to park motor vehicles for a period not to exceed thirty (30) days in a Designated Area. Temporary Contractor Permits may be renewed.

- (f) The City may grant permission to professional health care providers to park a motor vehicle in a Designated Area upon a written request being submitted to the Parking Services Division. A professional health care provider granted permission to park a motor vehicle in a Designated Area shall prominently display an approved placard or other form of identification on the passenger side of the front windshield of the motor vehicle.
6. All persons desiring a Permit shall apply to the City by completing the application form prescribed from time to time. Permits will not be renewed unless a new application form has been completed.
 7. Proof of residency shall be a valid driver's license, the motor vehicle's registration and any other proof which the City may deem necessary.
 8. The City may limit the number of Permits issued for any Designated Area. Subject to any such limitation, a Bona Fide Resident of a Designated Area may obtain one Permit for each motor vehicle owned by the Bona Fide Resident for which off-street parking space on his/her property is not available.
 9. A Permit issued pursuant to this By-Law shall identify the motor vehicle for which it is issued by having the license plate number of the motor vehicle printed on the Permit.
 10. A Visitor Permit issued pursuant to this By-Law shall identify the property address of the Bona Fide Resident to which it is issued by having such address printed on the Permit.
 11. Unless otherwise provided, a Permit shall entitle its holder to park the motor vehicle within any of the parking spaces identified by the signs referred to in Section 4 in the Designated Area for which the Permit was issued.
 12. A Permit does not exempt the holder from compliance with the provisions of the *Highway Traffic Act* or any regulations or by-law of the City of St. John's, including the Snow Clearing Regulations and the Street Cleaning By-Law.
 13. With the exception of Temporary Contractor Permits, Permits will be issued on an annual basis and will expire within Designated Areas as determined by the City.
 14. A fee of twelve dollars (\$12.00) will be charged for each Standard Permit issued, six dollars (\$6.00) of which will be refunded upon return of the previous year's expired Permit.
 15. A fee of six dollars (\$6.00) will be charged for each Visitor Permit issued. Visitor Permits are non-refundable and the previous year's expired Permit must be returned before a new Permit will be issued.
 16. A fee of twelve dollars (\$12.00) will be charged for each Temporary Contractor Permit and each renewal thereof.
 17. All Permits shall be prominently displayed on the passenger side of the front windshield of the motor vehicle.
 18. The provisions of this By-Law do not apply to motor vehicles of the City of St. John's, the Royal Newfoundland Constabulary or emergency vehicles responding to a call or service vehicles responding to a call for the servicing of plumbing, heating or electrical systems, or telephone repair of a dwelling providing that motor vehicle is properly identified.
 19. Permits shall not be re-sold or used for purposes other than for that which they were issued.
 20. Contravention of Section 19 will result in the Permit being revoked and the motor vehicle to which it is issued or displayed in being ticketed and/or towed.
 21. In the event of any person failing to do anything which under this By-Law he ought to have done, the City may do that act and recover the expenses thereof from the person so in default as a civil debt, and without limiting the generality of the foregoing, where a vehicle is parked or left on a City street in contravention of this By-Law, the City, through its employees, servants or agents, may cause the motor vehicle to be removed from the street and impounded at a suitable location and the owner thereof may reclaim the motor vehicle upon payment of the towing and impounding expenses.

22. (a) Any person who parks a motor vehicle in any parking space designated under this By-Law without a Permit or who otherwise violates or contravenes this By-Law is guilty of an offence and is liable to a minimum fine of \$30.00 for each offence.
- (b) Offences under this By-Law may be prosecuted by means of a traffic ticket under the provisions of Part II of the *Provincial Offences Act*, P-31, S.N. 1995.
23. The St. John's Residential Parking Area By-Law enacted by the City of St. John's on May 23, 1995 together with all amendments thereto are hereby repealed.

CITY OF ST. JOHN'S
City Clerk

P. O. # 45116
Oct 11

BY-LAW NO. 1446
ST. JOHN'S SNOW CLEARING BY-LAW
PASSED BY COUNCIL ON NOVEMBER 13, 2001

Under and by virtue of the powers conferred by section 189 of the *Highway Traffic Act*, R.S.N. c. H-3, and pursuant to a delegation of power by the Minister of Highways, the City of St. John's in regular session convened on this 13th day of November, 2001, hereby passes and enacts the following by-law relating to snow clearing in the City of St. John's.

1. This By-Law may be cited as the "St. John's Snow Clearing By-Law".
2. In this By-Law:
 - (a) "Downtown" means all those streets bounded by and including Quidi Vidi Village Road, Forest Road, Empire Avenue, Cashin Avenue, Symonds Avenue, Cornwall Avenue, Old Topsail Road, Water Street, Harbour Drive, Prescott Street, Water Street to Pier 17 and Southside Road from Civic #221 Southside Road to Civic #257 Southside Road inclusive, but excludes the following streets:

Brownrigg Place	Mount Royal Avenue
Carson Avenue	O'Dea Place
Cornwall Crescent	O'Neil Avenue
Davidson Place	Ryan Street
Grenfell Ave. (Ext.)	Smith Avenue
Hennebury Place	St. Michael's Avenue
Kitchener Avenue	Thompson Place
Morris Avenue	
 - (b) "motor vehicle" means a motor vehicle as defined in the *Highway Traffic Act*, R.S.N. 1990 c. H-3, as amended;
 - (c) "trailer" means a trailer as defined in the *Highway Traffic Act*, R.S.N. 1990 c. H-3, as amended.
3. During the period as designated by the Director of Public Works and Parks no person shall park a motor vehicle or trailer on any street in the City of St. John's.
 - (a) outside the Downtown between the hours of 1:00 o'clock in the morning and 7:00 o'clock in the morning of the same day, and
 - (b) in the Downtown between the hours of 1:00 o'clock in the morning and 7:00 o'clock in the morning of the same day.

4. No person shall park a motor vehicle or trailer on any street in the City of St. John's in such a manner so as to hinder, inconvenience or prevent the plowing and/or removal of snow and/or ice from the street.
5. The provisions of this By-Law shall not apply to:
 - (a) motor vehicles of the City of St. John's;
 - (b) motor vehicles of the Royal Newfoundland Constabulary or the Royal Canadian Mounted Police responding to a call;
 - (c) motor vehicles of the Newfoundland Hydro Corporation, Newfoundland Light and Power Company Limited, Newtel Communications or the St. John's Regional Fire Department responding to a call;
 - (d) ambulances responding to a call or transporting a patient; and
 - (e) funeral hearses responding to a call or transporting a client.
6.
 - (a) Any person who violates or contravenes any provision of this By-Law is guilty of an offence and is liable to a minimum fine of \$45.00 for each offence.
 - (b) Offences under this By-Law may be prosecuted by means of a traffic ticket under the provisions of Part II of the *Provincial Offences Act*, P-31.1, S.N. 1995.
7. In the event of any person failing to do anything which under this By-Law he ought to have done, the City may do that act and recover the expenses thereof from the person so in default as a civil debt, and without limiting the generality of the foregoing, where a motor vehicle or trailer is parked or left on a street in contravention of this By-Law, the City, through its employees, servants or agents, may cause the motor vehicle or trailer to be removed from the street and impounded at a suitable location and the owner thereof may reclaim the vehicle upon payment of the towing and impounding expenses.
8. The St. John's (Snow Clearing) Regulations enacted by the City of St. John's on November 23, 1992 and all amendments thereto are repealed.

CITY OF ST. JOHN'S
City Clerk

P. O. # 45116

Oct 11

REGULATION NO. 1302
AMENDMENT NO. 1368, 1386 & 1455
PARKING METER REGULATIONS
PASSED BY COUNCIL ON OCTOBER 26, 1992

Under and by virtue of the powers conferred by Sections 189 and 190 of the *Highway Traffic Act*, Chapter H-3 of the Revised Statutes of Newfoundland, 1990, and pursuant to a delegation of power by the Minister of Works, Services and Transportation dated the 27th day of April, 1990, the St. John's Municipal Council in regular session convened on this 26th day of October, 1992, hereby passes and enacts the following Regulations for parking purposes and the charging and collecting of fees for such parking by means of mechanical appliances, and generally in respect of any other matter in connection therewith for which the Council deems regulations necessary.

REGULATIONS

1. These Regulations may be cited as "The St. John's Parking Meter Regulations".
2. For the purposes of these Regulations the following words, terms or phrases shall have the meanings assigned to them respectively in this Section:

"City" means the City of St. John's as defined by the *City of St. John's Act*, R.S.N. 1990, c. C-17.

"Park" or "parking" means to permit a vehicle, whether occupied or not, to stand upon a highway.

"Parking Meter" means a device which shall indicate thereon the length of time during which a vehicle may be parked and which shall have as a part thereof a receptacle for receiving and storing coins, a slot or place in which such coins may be deposited, a timing mechanism to indicate the passage of the interval of time during which the parking is permissible and which shall also display a signal when said interval of time shall have elapsed.

"Parking Meter Space" means any area or portion of any highway or street marked out pursuant to these Regulations for the accommodation of a vehicle and adjacent to which a parking meter has been installed.

"Person" shall mean and include a firm, association, corporation or company.

3.
 - (1) The City Engineer is authorized to mark out and designate by suitable lines or markings separate parking meter spaces, adapted for the parking and accommodation of a vehicle, on the highways or streets in the City and to cause to be installed adjacent to each such parking meter space a parking meter of a type approved by the St. John's Municipal Council.
 - (2) Each parking meter shall be marked on the face plate of the meter with any one of the following markings as directed by the Council, namely, "Forty Minute", "One Hour", "Two Hours", or "Five Hours" and such markings shall indicate and mean the maximum period of time during which a vehicle shall be parked in the parking meter space adjacent to which such parking meter is installed.
4. Subject to Section 13 and 14 hereof no person shall park any vehicle in any parking meter space between the hours of 8:00 a.m. and 6:00 p.m. on Monday through Friday of every week, excluding statutory holidays unless the driver or operator of such vehicle, immediately after parking such vehicle in such parking meter space, deposits in the parking meter adjacent to such parking meter space a coin or coins as indicated on such parking meter for each sixty minutes of time or part thereof during which such vehicle is to be parked in such parking meter space.

The driver thereupon shall turn the handle provided on such meter in a clockwise direction to its full extent, and upon compliance with such requirements, such person shall be entitled to use such parking meter space for parking purposes for the interval of time indicated by the indicator hand on the timing mechanism of such parking meters.

5.
 - (1) In this section the terms "disabled person" and "disabled parking space" and "permit" shall have the same meaning as they are defined in the *Highway Traffic Act* (Disabled Parking) Regulations, 1987, as amended.

- (2) No person other than a disabled person holding a valid permit issued under the *Highway Traffic Act* (Disabled Parking) Regulations, 1987, as amended.
 - (3) All provisions of these Regulations, including but not limited to the payment of parking meter rates as outlined in Section 4 hereof, shall apply to persons parking in a disabled parking space.
 - (4) A disabled parking space may be designated by use of the international wheelchair logo of such dimensions as is convenient for use at such designated parking meter spaces.
6. (1) No person shall allow a vehicle to remain parked in any parking meter space for a period longer than that for which payment has been made by the driver or operator in the form of coins deposited in the parking meter adjacent to such parking space provided that the driver or operator may park a vehicle in a parking space for the unexpired time remaining on the parking meter from this previous use without depositing a coin in such meter.
 - (2) No person shall permit a vehicle to remain in a parking space while the signal "Expired" or "Violation" is in view on such parking meter.
 - (3) It shall be unlawful for the owner or operator to park or cause or permit to be parked in any parking meter space any motor vehicle forming part of the stock-in-trade of any Company or person who is a dealer in motor vehicles.
7. No person shall allow a vehicle to remain parked in any parking meter space for any period longer than the maximum period of time indicated by the marking on the face plate of the parking meter adjacent to such parking meter space.
 8. Any parking meter space may be used without any charge or payment:
 - (1) By vehicles licensed as taxicabs under the Taxicab By-Law of the City of St. John's when taking on or discharging passengers provided that no such vehicle shall remain in a parking meter space for a period in excess of three minutes without complying with the provisions of Section 4 of these Regulations.
 - (2) By vehicles of any Department of the City of St. John's while such vehicles or the operators thereof are engaged in the service of the City.
 9. Coins used for deposit in parking meters shall be coins of Canada or the United States of America and shall be twenty-five cents (\$0.25) or One dollar (\$1.00) coins or as may be indicated on the parking meter adjacent to the parking meter space in which a vehicle is to be parked.
 10. No person shall park any vehicle in such a manner that it is not wholly within an area designated or marked under these Regulations as a parking meter space and, if a vehicle of such length is to prevent it from being parked within one parking meter space and occupies part of the adjoining parking meter space, then the person parking such vehicle shall make the necessary deposit of coins as required by these Regulations in the parking meter for each of the adjoining parking meter spaces occupied in whole or in part by such vehicle as if such persons had parked two vehicles in such adjoining parking meter spaces.
 11. The owner of a vehicle shall incur the penalties provided for any violation of these Regulations with respect to any vehicle owned by him unless at the time of such violation the vehicle was in the possession of some other person than the owner without the consent of the owner but nothing in this section shall relieve the driver or operator of any vehicle from incurring the penalties provided for any violation of these Regulations.
 12. No persons shall deface, injure, tamper with, open or wilfully break, destroy or impair the usefulness of any parking meter or any part thereof installed under the provisions of these Regulations.
 13. The provisions of these Regulations shall not apply on any Saturday or Sunday or on any statutory holiday proclaimed by the Lieutenant-Governor in Council or on any other day or days which Council may upon resolution exempt from the provisions of these Regulations.

14. The provision of these Regulations or any parking meter installed thereunder shall not control, regulate, authorize or prohibit parking in any Parking Meter Space except during the hours specified in Section 4 of these Regulations and parking on any such Parking Meter Space at all other times shall be controlled, regulated, authorized or prohibited by any parking laws, rules or regulations that may be applicable.
15. The City of St. John's Parking Meter By-Law enacted by the Council on the 13th day of February, 1963, and all amendments thereto are repealed.
16. (1) Any person who violates or contravenes any provision of these Regulations is guilty of an offence and is liable to a minimum fine of fifteen dollars (\$15.00) for each offence.
(Amended 2002/08/19; #1455)
- (2) Offences under this By-Law may be prosecuted by means of a traffic ticket under the provisions of Part II of the *Summary Proceedings Act*.
- (3) Without limiting any power or authority which the City may have with respect to the laying of complaints, if a vehicle, in respect of which a traffic ticket summons has been served in accordance with the *Summary Proceedings Act* in the forenoon of any day, remains parked in violation of these Regulations for a period exceeding two (2) hours and into the afternoon of that day a separate offence shall be deemed to have occurred for which a further traffic ticket may be issued.

CITY OF ST. JOHN'S
City Clerk

P. O. # 45116

Oct 11

**REGULATION NO. 1368
AMENDMENT NO. 1377, 1386, 1412, 1421 & 1449
ST. JOHN'S TICKETING AMENDMENT BY-LAW
PASSED BY COUNCIL APRIL 15, 1996**

Under and by virtue of the powers conferred by Sections 188 and 189 of the *Highway Traffic Act*, R.S.N. 1990, Chapter H-3, as amended, pursuant to a delegation of power by the Minister of Works, Services and Transportation dated April 27, 1990, pursuant to an approval of the Minister of Works, Services and Transportation dated April 12, 1996, and in pursuance of the powers vested in it under and by virtue of the *City of St. John's Act*, R.S.N. 1990, Chapter C-17, as amended, and all other powers enabling it, the City of St. John's enacts the following By-Law relating to ticketable offences.

BY-LAW

1. (a) This By-Law may be cited as the "St. John's Ticketing Amendment By-Law".
(b) For the purpose of this By-Law "highway" shall have the same meaning as in the *Highway Traffic Act*.
(1999/06/14; #1421)
2. Subsection 16(1) of The St. John's Parking Meter Regulations is amended by removing the phrase "minimum fine of five dollars (\$5.00)" and substituting therefor the phrase "minimum fine of ten dollars (\$10.00)".
3. Subsection 6(a) of the St. John's Snowclearing Regulations is amended by removing the phrase "minimum fine of \$45.00" and substituting therefor the phrase "minimum fine of forty-five dollars (\$45.00)".
4. Subsection 5(a) of the 1995 St. John's Street Cleaning Regulations is amended by removing the phrase "minimum fine of \$12.00" and substituting therefor the phrase "minimum fine of seventeen dollars (\$17.00)".

5. Section 16 of The St. John's Residential Parking Area By-Law is amended by removing the phrase "maximum fine of Twelve dollars (\$12.00)" and substituting therefor the phrase "minimum fine of seventeen dollars (\$17.00)".
6.
 - (1) Where a sign which has the words "NO PARKING" or a symbol for "NO PARKING" inscribed on it is erected on a highway and the part of the highway to which the sign is applicable is clearly indicated by painted red or white lines or words or markers on the highway or by additional words inscribed on the signs describing the area to which the prohibition of the sign is applicable by name or other description or by reference to another sign erected on or near the same highway, the driver of a vehicle shall not park the vehicle in the area to which the sign applies, or between the hours or during the time specified on the sign.
 - (2) Where a sign which has the words "NO PARKING EXCEPT UNDER PERMIT" or a symbol for "NO PARKING EXCEPT UNDER PERMIT" inscribed on it is erected on a highway and the part of the highway to which the sign is applicable is indicated by painted red or white lines or words or markers on the highway or by additional words or symbols inscribed on the sign describing the area to which the prohibition of the sign is applicable by name or other description or by reference to another sign erected on or near the same highway, a person other than the person to whom the permit was issued shall not park a vehicle in the area to which the sign applies.
 - (3) Any person who violates or contravenes this section is guilty of an offence and is liable to a minimum fine of thirty dollars (\$30.00). (Amended 04/22/97; #1386)
 - (4) An offence under this section may be prosecuted by means of a traffic ticket under the provisions of the *Provincial Offences Act*.
7.
 - (1) Except where otherwise provided or where necessary to avoid conflict with traffic or to comply with the law or the directions of a traffic officer or traffic-control device, a person shall not stop, stand or park a vehicle on a highway so that the vehicle or a part of it is
 - (a) on a sidewalk or an area generally used or intended for use by pedestrians;
 - (b) in front of a public or private driveway or in front of an authorized loading door designated as that by the minister or a traffic authority;
 - (c) within an intersection or within 6 meters of an intersection;
 - (d) within 1 metre from the point on the curb or edge of the roadway immediately opposite a fire hydrant;
 - (e) within a crosswalk;
 - (f) within 6 metres of the approach of a crosswalk;
 - (g) within 10 metres upon the approach to a flashing beacon, stop sign or traffic-control signal located at the side of a roadway;
 - (h) alongside or opposite a street excavation or obstruction when stopping, standing or parking obstructs traffic;
 - (i) on the roadway side of a vehicle stopped or parked at the edge or curb of a roadway;
 - (j) upon a bridge or other elevated structure upon a highway, or within a highway tunnel; or (Amended 09/23/96; #1377)
 - (k) in a place in contravention of a traffic-control device that gives notice that stopping, standing, or parking is there prohibited or restricted. (Amended 09/23/96; #1377)

- (2) Any person who violates or contravenes this section is guilty of an offence and is liable to a minimum fine of fifty dollars (\$50.00). (Amended 04/22/97; #1386)
- (3) An offence under this section may be prosecuted by means of a traffic ticket under the provisions of the *Provincial Offences Act*.
8. (1) Except where otherwise provided or where necessary to avoid conflict with traffic or to comply with the law or the directions of a traffic officer or traffic-control device, a person shall not stop, stand or park a vehicle on a highway so that the vehicle or a part of it is
- (a) in a place of contravention of a traffic-control device that gives notice that stopping, standing, or parking is there prohibited and restricted.
- (2) Any person who violates or contravenes this section is guilty of an offence and is liable to a minimum fine of thirty dollars (\$30.00). (Amended 04/22/97; #1386)
- (3) An offence under this section may be prosecuted by means of a traffic ticket under the provisions of the *Provincial Offences Act*.
9. (1) Except where otherwise permitted, a driver shall not stop, stand or park a vehicle on a highway other than on the right side of the highway parallel to that side and, where there is a curb, with the wheels within 30 centimetres of the curb.
- (2) Any person who violates or contravenes this section is guilty of an offence and is liable to a minimum fine of fifty dollars (\$50.00). (Amended 04/22/97; #1386)
- (3) An offence under this section may be prosecuted by means of a traffic ticket under the provisions of the *Provincial Offences Act*.
10. (1) Except with the permission of the City of St. John's given either orally or in writing and without or subject to conditions, the driver of a vehicle shall not park the vehicle upon City owned land.
- (2) A driver who receives permission under subsection (1) shall park the vehicle in accordance with the conditions to which the permission is subject or, where there are no conditions, as otherwise directed by the City of St. John's.
- (3) Any person who violates or contravenes this section is guilty of an offence and is liable to a minimum fine of fifty dollars (\$50.00). (Amended 04/22/97; #1386)
- (4) An offence under this section may be prosecuted by means of a traffic ticket under the provisions of the *Provincial Offences Act*.
- (5) Nothing contained in this section is a bar to an action for trespass but, where
- (a) an action for trespass is taken based on an occurrence which is a breach of this section, a prosecution shall not be taken under this section; or
- (b) a prosecution is taken under this section, an action does not lie or shall not be taken for trespass based on the occurrence which gave rise to the prosecution. (Amended 09/23/96; #1377)
11. (1) Except where otherwise provided by a sign erected, a person shall not stop or park a vehicle within a distance of 20 metres from a bus stop or school bus stop where the distance is measured from the sign in the direction from which traffic approaches the sign on the side of the highway on which the sign is erected.

(2) Any person who violates or contravenes this section is guilty of an offence and is liable to a minimum fine of fifty dollars (\$50.00). (Amended 04/22/97; #1386)

(3) An offence under this section may be prosecuted by means of a traffic ticket under the provisions of the Provincial Offences Act. (Amended 09/23/96; #1377)

12. (1) For the purposes of this section:

(a) "disabled parking space" means a parking space set aside for disabled persons to park a motor vehicle and so designated by a sign bearing the international wheelchair logo;

(b) "international wheelchair logo" means the sign or symbol with a white wheelchair on a blue background;

(c) "permit" means the permit bearing the international wheelchair logo which has been issued by the Province of Newfoundland;

(2) No person other than the holder of a permit or a person accompanying a permit holder shall park a motor vehicle in a disabled parking space.

(3) (a) Every person who holds a permit shall display that permit in the driver's side, lower portion of that vehicle's windshield. (Amended 12/21/98; #1412)

(b) Every person who holds a permit shall surrender the permit upon request of a Parking Enforcement Officer. (Amended 12/21/98; #1412)

(4) For the purpose of this section, a motor vehicle displaying a special licence plate or parking permit with the international wheelchair logo and issued under the laws of a province other than the Province of Newfoundland or a state of the United States, shall be recognized as valid and allowing the special parking privileges provided herein.

(5) (a) Any person who violates or contravenes subsection 3(a) of this section is guilty of an offence and is liable to a minimum fine of thirty dollars (\$30.00);

(b) Any person who violates or contravenes any subsection of this section, excepting subsection 3(a), is guilty of an offence and is liable to a minimum fine of seventy-five dollars (\$75.00). (Amended 01/21/2002; #1449)

(6) An offence under this section may be prosecuted by means of a traffic ticket under the provisions of the *Provincial Offences Act*. (Amended 09/23/96; #1377)

CITY OF ST. JOHN'S
City Clerk

P. O. # 45116

Oct 11

JUDICATURE ACT**RULES OF THE SUPREME COURT, 1986****PRACTICE NOTE****P.N. (TD) No. 2002-02**

DATE ISSUED: October 10, 2002

RULES AFFECTED: 22.01(3); 29

EFFECTIVE DATE: Upon publication

PREVIOUS PRACTICE NOTES REVISED: N/A

The following Practice Note was filed with the Registrar, as Secretary of the Rules Committee of the Trial Division, and is published pursuant to rule 4.04 of the *Rules of the Supreme Court, 1986*.

ACCESS TO JUDGES AFTER HOURS FOR EMERGENCY PURPOSES**Background**

1. From time to time, counsel need access to the court outside of its normal sitting time, either on weekends, holidays or evenings. This need may arise in civil, family and criminal proceedings. Examples on the civil side would include applications for *ex parte* injunctions or other interim orders where irreparable harm would be caused by any delay. In family matters, emergency applications may also be necessary with respect to orders for non-removal from the jurisdiction in child mobility cases. On the criminal side, wiretap applications, warrants or restraining orders under proceeds of crime legislation may all be time-sensitive.
2. In the past, counsel have sometimes been unsure as to how to initiate contact with the court for such emergency purposes and, in particular, as to when it would be appropriate to make contact with a judge directly or how to select the particular judge to approach.
3. There have been occasions when access to a judge after hours has been abused. Sometimes, the circumstances are such that there would be no prejudice to the party seeking the emergency order to wait until the next sitting day before approaching the court. On other occasions, counsel have asked to have a judge and a court clerk available within a particular time frame when counsel are not in fact fully ready and end up keeping the court effectively on stand-by for an extended period of time.
4. The purpose of this Practice Note is to outline the procedure to be generally employed to gain access to a judge on an emergency basis where the special circumstances of the case justify such an approach.

Practice Note

5. When counsel anticipate that access to a judge outside of regular hours in the Judicial Centre of St. John's may be necessary, contact should be made by telephone with the Senior Deputy Registrar or an Assistant Deputy Registrar at the telephone numbers set out in the List available to counsel upon request from the Registry. An up-to-date List will be available at the beginning of each term of the court.
6. Contact should be made with as much advance notice as possible and should include information as to:
 - (a) the general nature of the anticipated application;
 - (b) counsel's best estimate of how much time will be needed for the judge to peruse the applicable paperwork;
 - (c) counsel's best estimate of when the judge and court clerk will be needed to hear the application.

7. The Senior Deputy Registrar or Assistant Deputy Registrar who is contacted will:
 - (a) either contact the Head of the appropriate Judicial Panel or provide the name and telephone number of that person to counsel who may then contact him or her directly;
 - (b) assign a court clerk.
8. When contacted, the Head of the Judicial Panel will either deal with the proposed application himself or herself or will assign another judge from that Panel to deal with it.
9. Once a judge and a court clerk have been assigned to deal with the matter, it will be the responsibility of the judge, clerk and counsel to co-ordinate the time and place for the hearing of the application.
10. In the case of an emergency application to the Unified Family Court, counsel shall first contact the Clerk of the Unified Family Court or one of the court clerks of the Unified Family Court at the telephone numbers set out in the List available to counsel upon request from the Registry. The person so contacted shall then request one of the resident Unified Family Court judges to hear the application and shall assign a court clerk of the Unified Family Court for that purpose. If no resident Unified Family Court judge is available, the Clerk of the Unified Family Court or court clerk shall contact the Senior Deputy Registrar or an Assistant Deputy Registrar of the Trial Division for assistance.
11. In the case of an emergency application in a judicial centre outside St. John's, counsel shall first contact the resident Deputy Registrar or Assistant Deputy Registrar who shall then request a resident judge to hear the application and shall assign a court officer from that judicial centre for that purpose. If no resident judge is available, the Deputy Registrar or Assistant Deputy Registrar shall contact his or her counterpart in the next closest judicial centre for assistance.
12. Where, because of time constraints or other special circumstances, the foregoing procedure cannot be employed, counsel may contact the Chief Justice or the senior non-supernumerary judge in the Judicial Centre of St. John's or the senior resident judge outside St. John's directly for assistance.
13. These procedures should only be employed where counsel are, after considering all relevant circumstances, of the *bona fide* opinion that the proposed application is of such an urgent nature that prejudice will be suffered by the applicant or some other affected party if the presentation of the application is delayed to the next regular sitting day of the court.

AUTHORIZED BY:

J. DEREK GREEN
Chief Justice of the Supreme Court
of Newfoundland and Labrador, Trial Division

BARRY R. SPARKES, B.C.L.
Registrar of the Supreme Court
Secretary, Rules Committee

Oct 18

RULES OF THE SUPREME COURT, 1986**PRACTICE NOTE****P.N. (TD) No. 2002-03**

DATE ISSUED: October 10, 2002

RULES AFFECTED: N/A

EFFECTIVE DATE: Upon publication

PREVIOUS PRACTICE NOTES REVISED: N/A

The following Practice Note was filed with the Registrar, as Secretary of the Rules Committee of the Trial Division, and is published consistent with rule 4.04 of the *Rules of the Supreme Court, 1986*.

JURY TRIALS (CRIMINAL): CHALLENGE FOR CAUSE PROCEDURE

Background:

Crown and defence counsel appear increasingly to apply to this court under section 638(1)(b) of the *Criminal Code of Canada* and invoke the challenge for cause process contained in Part XX of the *Code* with respect to each member of the panel of prospective jurors who have been summoned for jury duty.

In a number of cases, such requests have been made on the eve of jury selection in a given trial.

This presents certain practical difficulties to the court, crown and defence counsel, the accused and the Office of the High Sheriff, in that it may not always be possible, even where the court is inclined to grant an order under section 638, for the High Sheriff to summon a sufficient number of panels of potential jurors to accommodate such requests.

Practically speaking, it takes three weeks for the High Sheriff to summon a sufficient number of panels of potential jurors for such matters.

Unless otherwise directed by an order of this court, the High Sheriff will only summon additional panels of jurors when the High Sheriff has been informed that a challenge for cause order has been granted.

While the High Sheriff will do whatever is reasonably necessary to accommodate the requests of counsel and the court's direction in such cases, when applications for challenge for cause occur inside the three-week period, the High Sheriff will likely be deprived of the opportunity to summon the necessary number of persons to accommodate such a request.

In some cases, this could result in an unnecessary delay of proceedings, especially where the facts giving rise to the challenge for cause requests are known in advance.

Practice Note:

1. When challenge for cause situations are contemplated, counsel should give informal notice of this possibility to the court and the Office of the High Sheriff at the first possible opportunity and follow up with a formal application to court, so that the matter can be dealt with in a timely manner.
2. Except in unusual or exceptional circumstances, no application to use the challenge for cause procedure will be entertained less than four weeks before a scheduled trial date without at the same time giving serious consideration to possible postponement of the trial.

3. The High Sheriff will not summon additional panels of jurors to accommodate a challenge for cause procedure until a formal order has been granted.
4. On the arraignment of an accused, crown and defence counsel should be prepared to speak to the issue of whether challenge for cause is likely to be made and
 - a) if such a procedure is then contemplated, to be made subject to a time schedule for the bringing of such an application; or
 - b) if such a procedure is not then contemplated, be expected not to resile from that position unless good cause is subsequently shown.
5. The issue of whether there should be challenge for cause may be re-visited by the judge conducting the pre-trial conference and if challenge for cause is then contemplated, the judge may
 - a) order that an application be made forthwith or on a specified date to determine whether the procedure should be adopted; or
 - b) if crown and defence counsel consent, consult with the High Sheriff and make an order permitting challenge for cause and requiring the High Sheriff to summon such additional jury panels as may be necessary to accommodate such a procedure.
6. In considering whether an order should be made permitting challenge for cause, the pre-trial conference judge will consider whether the scheduled trial date can continue to be met and whether there is sufficient time for the High Sheriff to summon sufficient additional jury panels to accommodate such a procedure, and, if not, consider whether it is appropriate to postpone the commencement of the trial or to insist that the trial proceed on the scheduled date and deny the application for challenge for cause.

AUTHORIZED BY:

J. DEREK GREEN
Chief Justice of the Supreme Court
of Newfoundland and Labrador, Trial Division

BARRY R. SPARKES, B.C.L.
Registrar of the Supreme Court
Secretary, Rules Committee

Oct 18

MINERAL ACT			
NOTICE			
Published in accordance with regulation 62 of the Mineral Regulations.		Mineral Licence held by	4994M, 4995M Trinity Resources & Energy Ltd.
Mineral rights to the following mineral licences have reverted to the Crown:		situate near	Hawkes Bay South
		on map sheet	12I/11
		Mineral Licence held by	6914M Christopher J. Rockingham
		situate near	Bellburns, Northern Peninsula
		on map sheet	12I/ 5, 12I/ 6
Mineral Licence	2941	Mineral Licence	6918M
held by	Ralph Stewart	held by	International Granite Corporation
situate near	Point Enragee, Burin Peninsula	situate near	Templeman Lake, Central Nfld
on map sheet	1M/ 6	on map sheet	2E/ 3

THE NEWFOUNDLAND AND LABRADOR GAZETTE

October 18, 2002

Mineral Licence 6926M
held by International Granite Corporation
situate near Phillips Lake, Central Nfld
on map sheet 2E/ 3

Mineral Licence 6990M
held by Sidney Butt
situate near Rocky Pond, Avalon Peninsula
on map sheet 1N/ 6

Mineral Licence 8066M
held by John Patrick Sheridan
situate near East of Kaipokok River
on map sheet 13J/12, 13K/ 9

Mineral Licence 8067M
held by Roland Quinlan
situate near Chapel Island, Central Nfld
on map sheet 2E/ 7

Mineral Licence 8072M, 8073M
held by Roland Quinlan
situate near Haven Steady, Central Nfld
on map sheet 12A/10

Mineral Licence 8074M
held by Glen Manor Resources Inc.
situate near Tommys Arm River, Central Nfld
on map sheet 2E/ 5

Mineral Licence 8077M
held by Mary V. Spracklin
situate near Baikie Lake
on map sheet 23H/ 7

Mineral Licence 8089M, 8090M
held by Falconbridge Limited
situate near St. Lewis River
on map sheet 13A/ 4, 13A/ 5

Mineral Licence 8088M
held by Falconbridge Limited
situate near St. Lewis River
on map sheet 13A/ 5, 13A/ 4, 13A/ 3

Mineral Licence 8081M, 8082M, 8083M, 8084M,
8085M, 8086M, 8087M
held by Falconbridge Limited
situate near St. Lewis River
on map sheet 13A/ 6, 13A/ 5, 13A/ 3

Mineral Licence 8078M, 8079M, 8080M
held by Falconbridge Limited
situate near St. Lewis River
on map sheet 13A/ 7, 13A/ 6

Mineral Licence 8092M
held by Stephen Courtney
situate near Diversion Lake, Central Nfld
on map sheet 2D/12, 2D/13

Mineral Licence 8095M
held by John Patrick Sheridan
situate near Kaipokok Bay
on map sheet 13J/13

A portion
of licence 7694M
held by Buchans River Ltd
situate near Noel Pauls Brook, Central Nfld
on map sheet 12A/10, 12A/ 9
more particularly described in an application on file at
Dept. of Mines and Energy

All that portion of Ground
Staked Licence 3326
held by Great Gull Lake Resources
situate near Great Gull Pond, Central Nfld
on map sheet 12H/ 1
not covered by new Converted Mapped Staked Licence
9110M

All that portion of Ground
Staked Licence 4006
held by Great Gull Lake Resources
situate near Great Gull Pond, Central Nfld
on map sheet 12H/ 1
not covered by new Converted Mapped Staked Licence
9111M

The lands covered by this notice except for the lands within
Exempt Mineral Lands, the Exempt Mineral Lands being
described in Consolidated Newfoundland Regulations
1143/96 and Newfoundland Regulation 71/98, 104/98,
97/2000 and 36/2001 and outlined on 1:50 000 scale maps
maintained by the Department of Mines and Energy, will be
open for staking after the hour of 9:00 AM on the 32nd clear
day after the date of this publication. Priority of applications
submitted will be determined by a draw.

JIM HINCHEY, P.Geo
Mineral Claims Recorder

File # 771:1373, 1853, 1953
774:2437, 3169, 3565, 3567, 3570, 3617, 4308,
4309, 4313, 4314, 4317, 4318, 4320, 4322

Oct 18

URBAN AND RURAL PLANNING ACT

NOTICE OF REGISTRATION
TOWN OF LABRADOR CITY
DEVELOPMENT REGULATIONS AMENDMENT
NO. 9, 2002

Take notice that the Town of Labrador City Development Regulations Amendment No. 9, 2002, adopted on the 12th day of September, 2002, has been registered by the Minister of Municipal and Provincial Affairs.

In general terms, the purpose of Development Regulations Amendment No. 9, 2002 is to add the use "Hazardous Industry" to the Discretionary Use Classes of the General Industrial Zone Table.

The Town of Labrador City Development Regulations Amendment No. 9, 2002 comes into effect on the day that this notice is published in the Newfoundland Gazette. Anyone who wishes to inspect a copy of the Town of Labrador City Development Regulations Amendment No. 9, 2002 may do so at the Town Office, Town of Labrador City, 317 Hudson Drive, Labrador City, NL during normal working hours

TOWN OF LABRADOR CITY
Town Clerk

Oct 18

NOTICE OF REGISTRATION
ST. JOHN'S MUNICIPAL PLAN AMENDMENT
NUMBER 148, 2002 AND
ST. JOHN'S DEVELOPMENT REGULATIONS
AMENDMENT NUMBER 264, 2002

TAKE NOTICE that the City of St. John's Municipal Plan Amendment Number 148, 2002 and St. John's Development Regulations Amendment Number 264, 2002, adopted on the 3rd day of September, 2002 and approved on the 30th day of September, 2002, has been registered by the Minister of Municipal and Provincial Affairs.

In general terms, the purpose of St. John's Municipal Plan Amendment No. 148, 2002 is to redesignate land at Blackler Avenue previously used as a parking area for Twin Rinks Arena to the Residential Low Density District.

In general terms the purpose of St. John's Development Regulations Amendment No. 264, 2002 is to rezone land at Blackler Avenue previously used as a parking area for Twin Rinks Arena to the Residential Low Density (R1) Zone.

The St. John's Municipal Plan Amendment Number 148, 2002 and St. John's Development Regulations Amendment Number 264, 2002 come into effect on the day that this notice is published in *The Newfoundland and Labrador Gazette*. Anyone who wishes to inspect a copy of these amendments may do so at the City of St. John's Department of Engineering and Planning Department, 3rd Floor, St. John's City Hall during regular business hours (Monday through Friday, 9:00 a.m. to 4:30 p.m.).

CITY OF ST. JOHN'S
Engineering and Planning Department

Oct 18

LANDS ACT

NOTICE OF INTENT
Lands Act, Chapter 36, S.N. 1991

Notice is hereby given that Newfoundland and Labrador Hydro, St. John's, Newfoundland and Labrador intends to apply to the Department of Government Services and Lands, two months from the publication of this notice, to acquire title, pursuant to Section 7(2) of the said Act, all that piece or parcel of Crown Land situated within fifteen metres of the waters of an unnamed brook, in the Electoral District of Straits/White Bay North, Newfoundland and Labrador, for the purpose of erecting one (1) pole (#495) and being more particularly described as follows:

*Bounded on the North by Crown Land
for a distance of 1 m;
Bounded on the East by Crown Land
for a distance of 1 m;
Bounded on the South by Crown Land
for a distance of 1 m;
Bounded on the West by Crown Land
for a distance of 1 m;
and containing an area of
approximately 1 square metres.*

Any person wishing to object to the application must file the objection, in writing, within one month from the date of publication of this notice, with reasons for it, to the Minister of Government Services and Lands, c/o Western Regional Lands Office, P. O. Box 2006, Noton Building, Corner Brook, Newfoundland and Labrador, NF A2H 6J8.

For further information regarding the proposed application, please contact John Cooper, (709) 737-1944.

Requests for information on the processing of Crown Land applications under Section 7(2) of the Lands Act, may be sent to the Central Regional Office at the above address. Telephone (709) 729-3699.

Oct 18

NOTICE OF INTENT

Lands Act, Chapter 36, S.N. 1991

Notice is hereby given that Newfoundland and Labrador Hydro, St. John's, Newfoundland and Labrador intends to apply to the Department of Government Services and Lands, two months from the publication of this notice, to acquire title, pursuant to Section 7(2) of the said Act, all that piece or parcel of Crown Land situated within fifteen metres of the waters of an unnamed brook, in the Electoral District of Straits/White Bay North, Newfoundland and Labrador, for the purpose of erecting one (1) pole (#476) and being more particularly described as follows:

*Bounded on the North by Morgan Anderson
for a distance of 1 m;
Bounded on the East by Morgan Anderson
for a distance of 1 m;
Bounded on the South by Morgan Anderson
for a distance of 1 m;
Bounded on the West by Morgan Anderson
for a distance of 1 m;
and containing an area of
approximately 1 square metres.*

Any person wishing to object to the application must file the objection, in writing, within one month from the date of publication of this notice, with reasons for it, to the Minister of Government Services and Lands, c/o Western Regional Lands Office, P. O. Box 2006, Noton Building, Corner Brook, Newfoundland and Labrador, NF A2H 6J8.

For further information regarding the proposed application, please contact John Cooper, (709) 737-1944.

Requests for information on the processing of Crown Land applications under Section 7(2) of the Lands Act, may be sent to the Central Regional Office at the above address. Telephone (709) 729-3699.

Oct 18

NOTICE OF INTENT

Lands Act, Chapter 36, S.N. 1991

Notice is hereby given that Newfoundland and Labrador Hydro, St. John's, Newfoundland and Labrador intends to apply to the Department of Government Services and Lands, two months from the publication of this notice, to acquire title, pursuant to Section 7(2) of the said Act, all that piece or parcel of Crown Land situated within fifteen metres of the waters of an unnamed brook, in the Electoral District of Straits/White Bay North, Newfoundland and Labrador, for the purpose of erecting one (1) pole (#478) and being more particularly described as follows:

*Bounded on the North by Crown Land
for a distance of 1 m;
Bounded on the East by Crown Land*

*for a distance of 1 m;
Bounded on the South by Crown Land
for a distance of 1 m;
Bounded on the West by Crown Land
for a distance of 1 m;
and containing an area of
approximately 1 square metres.*

Any person wishing to object to the application must file the objection, in writing, within one month from the date of publication of this notice, with reasons for it, to the Minister of Government Services and Lands, c/o Western Regional Lands Office, P. O. Box 2006, Noton Building, Corner Brook, Newfoundland and Labrador, NF A2H 6J8.

For further information regarding the proposed application, please contact John Cooper, (709) 737-1944.

Requests for information on the processing of Crown Land applications under Section 7(2) of the Lands Act, may be sent to the Central Regional Office at the above address. Telephone (709) 729-3699.

Oct 18

QUIETING OF TITLES ACT

2002 05 T 0215

IN THE SUPREME COURT
OF NEWFOUNDLAND AND LABRADOR

TRIAL DIVISION

NOTICE OF APPLICATION under the *Quieting of Titles Act*, Chapter Q-3, of the Revised Statutes of Newfoundland and Labrador

NOTICE OF APPLICATION

NOTICE IS HEREBY GIVEN to all parties that Joseph Dusseault, of the Town of Bonavista, in the District of Bonavista South, in the Province of Newfoundland and Labrador, has applied to the Supreme Court, Trial Division, Gander, to have title to all that piece or parcel of property situate at Spillars Cove, in the District of Bonavista South, in the Province of Newfoundland and Labrador, which property is more particularly described in Schedule "A" hereto annexed and shown in Schedule "B" hereto annexed.

ALL BEARINGS aforementioned, for which Joseph Dusseault claims to be the owner investigated and for a Declaration that he is the absolute owner in fee simple in possession and the said Joseph Dusseault has been ordered to publish Notice of Application as required by the above named Act.

All persons having title adverse to the said title claimed by the said Joseph Dusseault shall file in the Registry of the Supreme Court of Newfoundland and Labrador, Trial Division, Gander, particulars of such adverse claim and serve the same together with an Affidavit verifying same on the undersigned Solicitors for the Petitioner on or before the 8th day of November, 2002, after which date no party having any claim shall be permitted to file the same or to be heard except by special leave of the Court and subject to such conditions as the Court may deem just.

All such adverse claims shall be investigated then in such manner as the Supreme Court of Newfoundland, Trial Division, Gander, may direct.

DATED AT Clarenville, in the Province of Newfoundland and Labrador, this 9th day of October, 2002.

MILLS, HUSSEY & PITTMAN
Solicitors for the Applicant
Per: Arnold Hussey, Q.C.

ADDRESS FOR SERVICE:
P. O. Box 970
Manitoba Professional Building
Manitoba Drive
Clarenville, NF A0E 1J0

Oct 18

SCHEDULE 'A'

W. Harris Surveys Ltd.
Newfoundland Land Surveyors

All that piece or parcel of land situate and being at Spillars Cove, in the Electoral District of Bonavista South, in the Province of Newfoundland and Labrador, Canada, abutted and bounded as follows, that is to say:

BEGINNING at a point in the northwestern limit of the Main Road through Spillars Cove the said point having NAD-83 Co-ordinates of N5,391,075.689 meters and E 298,997.864 meters of the Modified 3° Transverse Mercator Grid Projection for the Province of Newfoundland and Labrador.

THENCE running by land of George Stagg south eight degrees forty three minutes three seconds east, thirty decimal four eight zero meters.

THENCE running by Crown Land south seventy eight degrees fifty five minutes twenty seven seconds west, eighty three decimal six five four meters.

THENCE running by Crown Land and by land of John Dusseault (Roll 1596, Frame 2309) north eleven degrees twenty minutes twenty four seconds west, thirty decimal four eight zero meters.

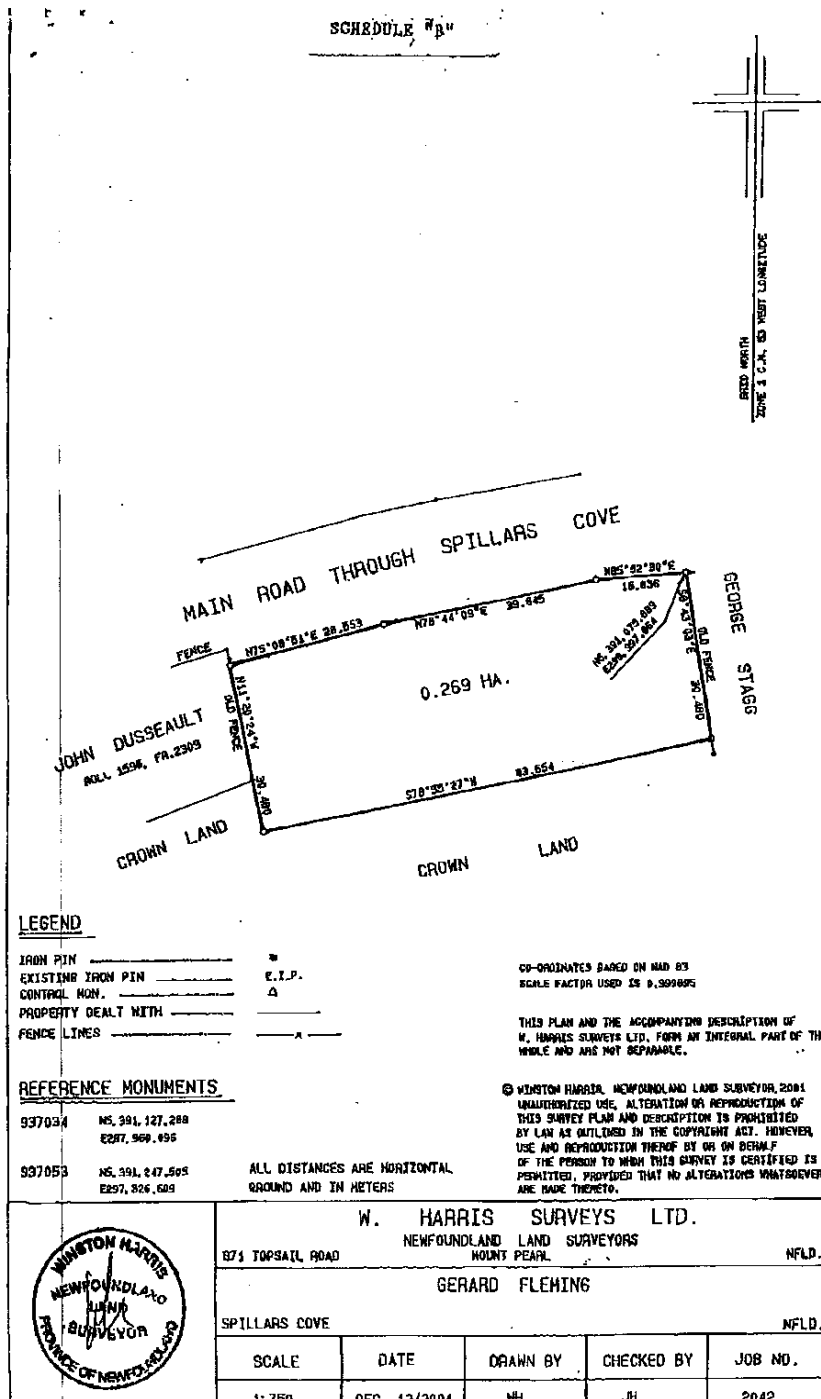
THENCE running along the said northwestern limit of the Main Road through Spillars Cove north seventy five degrees eight minutes fifty one seconds east, twenty eight decimal five five three meters;

THENCE north seventy eight degrees forty four minutes nine seconds east thirty nine decimal eight four five meters;

AND THENCE north eight five degrees fifty two minutes thirty seconds east, sixteen decimal eight three six meters, more or less, to the point of beginning.

CONTAINING an area of 0.269 hectares, more or less, and being more particularly shown on the diagram annexed hereto.

All bearings being referred to Grid North of the above mentioned Projection.



2002 01T 4018
IN THE SUPREME COURT
OF NEWFOUNDLAND AND LABRADOR
TRIAL DIVISION

IN THE MATTER of the *Quieting of Titles Act*, Chapter Q-3, of the Revised Statutes of Newfoundland and Labrador

AND IN THE MATTER of a piece or parcel of land situate and being on the northern side of Chaytors Road, in the Town of Conception Bay South, in the Province of Newfoundland and Labrador, Canada

AND IN THE MATTER of an Application of the Estate of Harriett Byrne, as represented by Kelvin G. Fowler and Henry R. Chaytor, Executors of the said Estate

NOTICE OF APPLICATION UNDER THE *QUIETING OF TITLES ACT*, RSNL, 1990, c-Q-3 AS AMENDED

NOTICE IS HEREBY GIVEN to all parties that the Estate of Harriett Byrne, as represented by Kelvin G. Fowler and Henry R. Chaytor, Executors of the said Estate, has applied to the Supreme Court of Newfoundland and Labrador, Trial Division, in the Judicial Centre of St. John's, to have the title to ALL THAT piece or parcel of land situate and being located on the northern side of Chaytors Road, in the Town of Conception Bay South, in the Province of Newfoundland and Labrador, Canada, and as more particularly described in Schedule "A" hereto annexed, of which the said Estate claims of its own behalf to be the owner, investigated and for a declaration that the said Estate is the absolute owner thereof, free from those exceptions or qualifications contained in Paragraphs 22 (1) (c) and (d) of the *Quieting of Titles Act* and subject to an easement, being 1.22 meters wide and as referenced and shown on the said survey, to maintain, inspect, and repair a water-line on and under the lands. All persons having a claim adverse to this title claimed by the said Estate should file in the Registry of the Supreme Court of Newfoundland and Labrador, Trial Division, Judicial Centre of St. John's, at the Courthouse Building, Duckworth Street, St. John's, Newfoundland and Labrador, Canada, A1C 5M3, particulars of such adverse claim and serve same, together with an Affidavit verifying same, on the undersigned solicitors for the Applicants on or before November 4, 2002, after which date no party having any claim shall be permitted to file same or to be heard except by special leave of the Court subject to such conditions as the Court may deem just.

All such adverse claims shall then be investigated in such manner as the said Supreme Court may direct.

DATED at St. John's, Province of Newfoundland and Labrador, this 1st day of October, 2002.

COX HANSON O'REILLY MATHESON
Solicitors for the Applicant
Per: Griffith D. Roberts

ADDRESS FOR SERVICE:
Suite 401, Scotia Centre
235 Water Street
St. John's, NL
A1C 1B6

Oct 18

SCHEDULE 'B'

All that piece or parcel of land situate and being on the northern side of Chaytors Road in Chamberlains, in the electoral district of Topsail, Newfoundland, Canada and being abutted as follows, that is to say:

BEGINNING at a point, said point having NAD83 coordinates of North 5265968.722 meters and East 308944.106 meters with reference to Crown Land Monument No 83G 3231 having coordinates of North 5265946.005 meters and East 309136.082 meters and Crown Land Monument No. 83G 3232 having co-ordinates of North 5265414.885 meters and East 309035.556 meters of the Modified Three Degree Transverse Mercator Projection for Newfoundland and Labrador having a central meridian of 53 degrees west longitude;

THENCE running along by Chaytors Road North sixty-six degrees forty-five minutes twenty-one seconds West, one decimal seven six two meters;

AND THENCE running North seventy-seven degrees fifteen minutes thirty-one seconds West, twelve decimal three six four meters;

AND THENCE running North eighty-three degrees fifty-nine minutes forty-one seconds West, thirty-eight decimal six nine six meters;

THENCE running along by land now or formerly belonging to Kevin Farrell registered in Volume 1043 Folio 137 of the Registry of Deeds in Newfoundland and Labrador North three degrees thirty-three minutes thirty-six seconds East, twenty-seven decimal two four four meters;

THENCE running along by land now or formerly belonging to Alice Mary (Leonard) White registered in Volume 394 Folio 579 of the Registry of Deeds in Newfoundland and Labrador South eighty-four degrees forty-two minutes

nineteen seconds East, twenty-four decimal eight five one meters;

AND THENCE running South seventy-seven degrees forty-seven minutes zero five seconds East, nine decimal eight six nine meters;

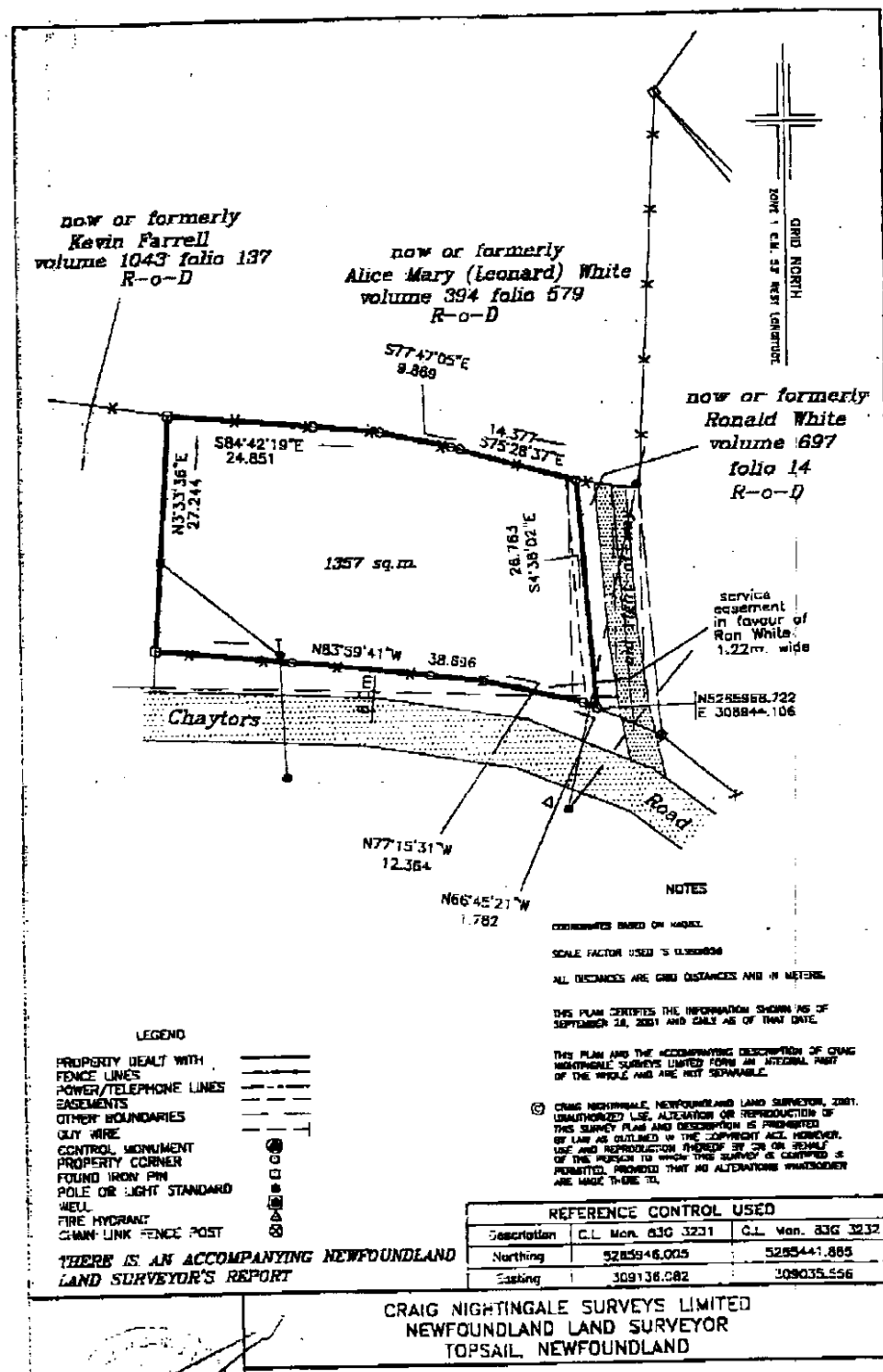
AND THENCE running South seventy-five degrees twenty-eight minutes thirty-seven seconds East, fourteen decimal three seven seven meters;

THENCE running along by land now or formerly registered to Ronald White in Volume 697 Folio 14 of the Registry of Deeds in Newfoundland South four degrees thirty-eight

minutes zero two seconds East, twenty-six decimal seven six three meters, more or less, to the point of beginning.

The above described parcel of land has an area of 1357 square meters, more or less, and is shown more fully delineated on the adjoining plan having Job No. 442500 dated September 26, 2001. SUBJECT TO, nevertheless, a service easement in favour of Ron White shown more fully delineated on the adjoining plan. The only visible signs of encroachment on the parcel of land are overhead wires, utility poles and a guy wire shown more fully delineated on the adjoining. All the bearings are referred to Grid North of the above mentioned projection. All distances are grid distances using a scale factor of 0.999898.

October 18, 2002



CHANGE OF NAME ACT

C-8 RSN 1990

**NOTICE OF APPLICATION
FOR CHANGE OF NAME**

NOTICE is hereby given that an application will be made to the Minister of Government Services and Lands for a change of name, pursuant to the provisions of the *Change of Name Act*, by me:-

KIM ROWE

of P. O. Box 674, 86 Walsh Avenue, Wabush, A0R 1B0, in the Province of Newfoundland and Labrador, as follows:

To change my minor unmarried children's name from

DAMON LANE CANUEL

to

DAMON LANE GAULTON

TYLER ANTHONY CANUEL

to

TYLER ANTHONY GAULTON

DATED this 4th day of June, 2002.

KIM ROWE
(Signature of Applicant)

Oct 18

**NOTICE OF APPLICATION
FOR CHANGE OF NAME**

NOTICE is hereby given that an application will be made to the Minister of Government Services and Lands for a change of name, pursuant to the provisions of the *Change of Name Act*, by me:-

CENDY GLORIA ANDREWS

of 108 A Paddy Dobbin Drive, St. John's, A1A 5E4, in the Province of Newfoundland and Labrador, as follows:

To change my name from

CENDY GLORIA ANDREWS

to

CENDY GLORIA MITCHELL

DATED this 26th day of July, 2002.

CENDY G. ANDREWS
(Signature of Applicant)

Oct 18

**NOTICE OF APPLICATION
FOR CHANGE OF NAME**

NOTICE is hereby given that an application will be made to the Minister of Government Services and Lands for a change of name, pursuant to the provisions of the *Change of Name Act*, by me:-

CRAIG MURPHY

of 24A Davis Place, Mount Pearl, A1N 3W8, in the Province of Newfoundland and Labrador, as follows:

To change my unmarried child's name from

JOSHUA PAUL RIDGELEY

to

JOSHUA PAUL MURPHY

DATED this 8th day of October, 2002.

CRAIG MURPHY
(Signature of Applicant)

Oct 18

**NOTICE OF APPLICATION
FOR CHANGE OF NAME**

NOTICE is hereby given that an application will be made to the Minister of Government Services and Lands for a change of name, pursuant to the provisions of the *Change of Name Act*, by me:-

CAROL ELAINE LEARNING

of 65 MacDonald Drive, P. O. Box 1058, Stn C, Goose Bay, A0P 1C0, in the Province of Newfoundland and Labrador, as follows:

To change my minor unmarried child's name from

EMMA LYNDSEY MICHAELA BENNETT

to

EMMA LYNDSEY MICHAELA BENNETT-LEARNING

DATED this 4th day of September, 2002.

CAROL ELAINE LEARNING
(Signature of Applicant)

Oct 18

**NOTICE OF APPLICATION
FOR CHANGE OF NAME**

NOTICE is hereby given that an application will be made to the Minister of Government Services and Lands for a change of name, pursuant to the provisions of the *Change of Name Act*, by me:-

CYNTHIA ELAINE BYRNE

of P. O. Box 414, Glovertown, A0G 2L0, in the Province
of Newfoundland and Labrador, as follows:

To change my minor unmarried children's name
from

ALICIA-RAE BALL

to

ALICIA-RAE BYRNE

REBEKAH SIOBHAN BALL

to

REBEKAH SIOBHAN BYRNE

DATED this 3rd day of October, 2002.

CYNTHIA ELAINE BYRNE
(Signature of Applicant)

Oct 18



THE NEWFOUNDLAND AND LABRADOR GAZETTE

PART II

SUBORDINATE LEGISLATION FILED UNDER THE STATUTES AND SUBORDINATE LEGISLATION ACT

Vol. 77

ST. JOHN'S, FRIDAY, OCTOBER 18, 2002

No. 42

NEWFOUNDLAND AND LABRADOR REGULATIONS

NLR 67/02

NLR 68/02

NLR 69/02

NLR 70/02

NLR 71/02

NLR 72/02

NLR 73/02

NLR 74/02

NLR 75/02

NLR 76/02

NLR 77/02



**NEWFOUNDLAND AND LABRADOR
REGULATION 67/02**

Furbearing Animals Trapping Order, 2002-2003
under the
Wild Life Regulations
and the
Wild Life Act

(Filed October 8, 2002)

Under the authority of sections 16, 25, 27 and 114 of the *Wild Life Regulations* and the *Wild Life Act*, I make the following Order.

Dated at St. John's, October 4, 2002.

Julie Bettney
Minister of Tourism, Culture and Recreation

ORDER

Analysis

- | | |
|--|---------------------------------------|
| 1. Short title | 11. Neck snares |
| 2. Open season trapping | 12. Foot traps |
| 3. Prohibited areas | 13. Quick kill traps |
| 4. Beaver management area | 14. Live holding devices |
| 5. Rate of beaver harvest | 15. Prohibited devices |
| 6. Underwater sets required | 16. Lynx to be registered |
| 7. Labrador furbearer management zones | 17. Licence and registration required |
| 8. Open season trapping | 18. Accidental taking of lynx |
| 9. Limit | 19. Wolves |
| 10. Prohibited devices | 20. Repeal |

Schedule A

Schedule B

Short title

1. This Order may be cited as the *Furbearing Animals Trapping Order, 2002-2003*.

Open season trapping

2. The open season for trapping on the Island of Newfoundland except as provided for in Schedule A shall be

Beaver	Oct. 20, 2002 - Mar. 15, 2003
Coyote	Oct. 20, 2002 - Feb. 1, 2003
Ermine, weasel	Oct. 20, 2002 - Feb. 28, 2003
Fox, coloured	Oct. 20, 2002 - Feb. 1, 2003
Fox, white	Oct. 20, 2002 - Feb. 1, 2003
Lynx	Zone A and B-Jan. 1, 2003 - Feb. 1, 2003 Zone C-Oct. 20, 2002 - Feb. 1, 2003
Mink	Nov. 1, 2002 - Feb. 28, 2003
Muskrat	Oct. 20, 2002 - Mar. 15, 2003
Otter	Oct. 20, 2002 - Mar. 15, 2003
Squirrel	Oct. 20, 2002 - Feb. 28, 2003

Prohibited areas

3. (1) Notwithstanding section 2, the trapping of furbearing animals, other than beaver, is prohibited in that part of the Island of Newfoundland known as the Pine Marten Study Area which is described in Schedule A.

(2) The trapping of all furbearing animals is prohibited in the following areas:

- (a) Frenchman’s Cove, Great Garnish Barasway;
- (b) Brunette Island, Fortune Bay;
- (c) Jude Island, Placentia Bay;
- (d) Emberley Island, Placentia Bay; and

(e) Great Southern Harbour.

(3) Notwithstanding section 2, all dry land trapping and snaring of furbearing animals is prohibited in that part of the Island of Newfoundland known as the Main River/Upper Humber Study Area and on Glover Island as described in Schedule A.

(4) Notwithstanding subsection (3), the use of submerged and semi-submerged sets is permitted in the areas referred to in that subsection, but for the purposes of mink, muskrat, beaver and otter, trapping is restricted to underwater sets including

(i) a submerged leghold trap set as a drowner,

(ii) floating mink boxes,

(iii) underwater conibear sets, and

(iv) submarine or multiple catch type sets.

(5) Notwithstanding subsection 2, select dry land trapping only is permitted in the North West Grand Lake Area, the Charlottetown Enclave Area, the Terra Nova Area and the Red Indian Lake Area as described in Schedule A.

(6) For the purpose of subsection (5), "select dry land trapping" includes the use of neck snares for fox, coyote and lynx, but for the purpose of mink, muskrat, beaver and otter trapping is restricted to underwater sets including

(a) a submerged leghold trap set as a drowner,

(b) floating mink boxes,

(c) underwater conibear sets,

(d) submarine or multiple catch type sets, and

(e) 330 conibear and similar traps set at waters edge in beaver runs.

Beaver management
area

4. For the purpose of managing the harvests of beaver, the Island of Newfoundland is designated as a beaver management area.

Rate of beaver harvest	5. On the Island of Newfoundland, the holder of a beaver trapline licence shall harvest beaver at a rate of one beaver per active lodge on the trapline area identified in the licence.																																														
Underwater sets required	6. The trapping of beaver in the Pine Marten Study Area is permitted only by the use of underwater sets.																																														
Labrador furbearer management zones	7. The Labrador Furbearer Management Zones are as described in Schedule B.																																														
Open season trapping	8. The open seasons for trapping within Labrador shall be <table> <tr> <td colspan="2">(a) Northern Labrador Zone</td></tr> <tr> <td>Beaver</td><td>Oct. 15, 2002 - May 31, 2003</td></tr> <tr> <td>Coyote</td><td>Oct. 15, 2002 - Mar. 31, 2003</td></tr> <tr> <td>Ermine, weasel</td><td>Oct. 15, 2002 - Mar. 31, 2003</td></tr> <tr> <td>Fox, coloured</td><td>Oct. 15, 2002 - Mar. 31, 2003</td></tr> <tr> <td>Fox, white</td><td>Oct. 15, 2002 - May 15, 2003</td></tr> <tr> <td>Lynx</td><td>Oct. 15, 2002 - Mar. 31, 2003</td></tr> <tr> <td>Marten</td><td>Oct. 15, 2002 - Mar. 31, 2003</td></tr> <tr> <td>Mink</td><td>Nov. 1, 2002 - Mar. 31, 2003</td></tr> <tr> <td>Muskrat</td><td>Oct. 5, 2002 - May 31, 2003</td></tr> <tr> <td>Otter</td><td>Oct. 15, 2002 - Mar. 31, 2003</td></tr> <tr> <td>Squirrel</td><td>Oct. 15, 2002 - Mar. 31, 2003</td></tr> <tr> <td>Wolf</td><td>Oct. 15, 2002 - Apr. 30, 2003</td></tr> <tr> <td>Wolverine</td><td>No open season</td></tr> <tr> <td>Fisher</td><td>No open season</td></tr> <tr> <td colspan="2">(b) Southern Labrador Zone</td></tr> <tr> <td>Beaver</td><td>Oct. 15, 2002 - May 31, 2003</td></tr> <tr> <td>Coyote</td><td>Nov. 1, 2002 - Mar. 20, 2003</td></tr> <tr> <td>Ermine, weasel</td><td>Nov. 1, 2002 - Mar. 20, 2003</td></tr> <tr> <td>Fox, coloured</td><td>Nov. 1, 2002 - Mar. 20, 2003</td></tr> <tr> <td>Fox, white</td><td>Nov. 1, 2002 - Mar. 20, 2003</td></tr> <tr> <td>Lynx</td><td>Nov. 1, 2002 - Mar. 20, 2003</td></tr> <tr> <td>Marten</td><td>Nov. 1, 2002 - Mar. 20, 2003</td></tr> </table>	(a) Northern Labrador Zone		Beaver	Oct. 15, 2002 - May 31, 2003	Coyote	Oct. 15, 2002 - Mar. 31, 2003	Ermine, weasel	Oct. 15, 2002 - Mar. 31, 2003	Fox, coloured	Oct. 15, 2002 - Mar. 31, 2003	Fox, white	Oct. 15, 2002 - May 15, 2003	Lynx	Oct. 15, 2002 - Mar. 31, 2003	Marten	Oct. 15, 2002 - Mar. 31, 2003	Mink	Nov. 1, 2002 - Mar. 31, 2003	Muskrat	Oct. 5, 2002 - May 31, 2003	Otter	Oct. 15, 2002 - Mar. 31, 2003	Squirrel	Oct. 15, 2002 - Mar. 31, 2003	Wolf	Oct. 15, 2002 - Apr. 30, 2003	Wolverine	No open season	Fisher	No open season	(b) Southern Labrador Zone		Beaver	Oct. 15, 2002 - May 31, 2003	Coyote	Nov. 1, 2002 - Mar. 20, 2003	Ermine, weasel	Nov. 1, 2002 - Mar. 20, 2003	Fox, coloured	Nov. 1, 2002 - Mar. 20, 2003	Fox, white	Nov. 1, 2002 - Mar. 20, 2003	Lynx	Nov. 1, 2002 - Mar. 20, 2003	Marten	Nov. 1, 2002 - Mar. 20, 2003
(a) Northern Labrador Zone																																															
Beaver	Oct. 15, 2002 - May 31, 2003																																														
Coyote	Oct. 15, 2002 - Mar. 31, 2003																																														
Ermine, weasel	Oct. 15, 2002 - Mar. 31, 2003																																														
Fox, coloured	Oct. 15, 2002 - Mar. 31, 2003																																														
Fox, white	Oct. 15, 2002 - May 15, 2003																																														
Lynx	Oct. 15, 2002 - Mar. 31, 2003																																														
Marten	Oct. 15, 2002 - Mar. 31, 2003																																														
Mink	Nov. 1, 2002 - Mar. 31, 2003																																														
Muskrat	Oct. 5, 2002 - May 31, 2003																																														
Otter	Oct. 15, 2002 - Mar. 31, 2003																																														
Squirrel	Oct. 15, 2002 - Mar. 31, 2003																																														
Wolf	Oct. 15, 2002 - Apr. 30, 2003																																														
Wolverine	No open season																																														
Fisher	No open season																																														
(b) Southern Labrador Zone																																															
Beaver	Oct. 15, 2002 - May 31, 2003																																														
Coyote	Nov. 1, 2002 - Mar. 20, 2003																																														
Ermine, weasel	Nov. 1, 2002 - Mar. 20, 2003																																														
Fox, coloured	Nov. 1, 2002 - Mar. 20, 2003																																														
Fox, white	Nov. 1, 2002 - Mar. 20, 2003																																														
Lynx	Nov. 1, 2002 - Mar. 20, 2003																																														
Marten	Nov. 1, 2002 - Mar. 20, 2003																																														

Mink	Nov. 1, 2002 - Mar. 20, 2003
Muskrat	Oct. 15, 2002 - May 31, 2003
Otter	Oct. 15, 2002 - Mar. 20, 2003
Squirrel	Nov. 1, 2002 - Mar. 20, 2003
Wolf	Nov. 1, 2002 - Apr. 30, 2003
Wolverine	No open season
Fisher	No open season

Limit	9. In Labrador there is no limit on the number of beaver which may be taken by the holder of a trappers beaver licence.
Prohibited devices	10. A person shall not trap, take or kill any furbearing animal by means of a trap or other device that is equipped with metal teeth, metal serrated edges, hooks or sharp devices.
Neck snares	11. All neck snares which are set on land, for the purpose of taking furbearing animals, except squirrel, shall be equipped with a noose locking device, set in a manner that the noose once closed is prevented from expanding.
Foot traps	12. All foot hold traps set for beaver, muskrat, otter and mink shall be set in a manner that allows the animal to submerge and prevent it from resurfacing.
Quick kill traps	13. (1) All furbearing animals, except fox, coyote, wolf, and lynx shall be taken only by means of quick kill traps, box traps, cage traps or other traps set in manner as to kill the animal quickly. (2) Coyote, wolf and lynx may be taken with a foot holding device providing the device has a minimum space of 5 millimetres between the jaws when closed, or the device has pads of a rubber like substance fastened to the trap jaws or the device is equipped with trap jaws of 9 millimetres or greater in thickness.
Live holding devices	14. All live holding devices set on land for furbearing animals shall be checked at least every 72 hours.
Prohibited devices	15. A person shall not use spring poles or foot hold traps in trees or poles, unless the trap is set as a quick killing device.

Lynx to be registered

16. (1) All lynx caught on the Island of Newfoundland during the open season for lynx shall be registered for tagging prior to the close of business hours on Friday, February 7, 2003.

(2) All lynx carcasses shall be surrendered to the Inland Fish and Wild Life Division at the time of registration.

Licence and registration required

17. A person on the Island of Newfoundland shall not have in his or her possession any lynx pelt or any lynx parts, unless that person is the holder of a valid trappers licence and the pelt or parts are registered in accordance with section **16** or previously as registered.

Accidental taking of lynx

18. A licensed trapper who, on the Island of Newfoundland, takes lynx accidentally during the trapping seasons for other species other than those trapping periods specified for lynx shall within 7 days of taking the lynx surrender it to the Inland Fish and Wild Life Division.

Wolves

19. (1) All persons taking wolves must surrender to the Inland Fish and Wild Life Division the lower jawbone or complete skull from each wolf taken.

(2) These specimens shall be submitted by May 15, 2003.

Repeal

20. The *Furbearing Animals Trapping Order, 2001-2002*, Newfoundland and Labrador Regulation 88/01, is repealed.

Schedule A

(a) Pine Marten Study Area

That part of the Island of Newfoundland bounded by a line beginning at the intersection of the Trans Canada Highway, Route 1, and the Camp 33 Road;

Then following the Camp 33 Road to the southwestern extremity of Grand Lake;

Then following the shoreline of Grand Lake to the mouth of Red Indian Brook a distance of approximately 15 kilometres to a small lake on its headwaters;

Then following a straight line in a generally southeasterly direction to the southeastern extremity of the Lake of the Hills;

Then following the western bank of the brook flowing out of Lake of the Hills to Otter Pond;

Then following the western shore of Otter Pond and the western bank of the brook flowing out of Otter Pond into Lloyds River;

Then following the northern bank of Lloyds River and the northern shore of Lloyds Lake and the northern bank of Lloyds River, west of Lloyds Lake, to the mouth of the brook flowing out of Cormacks Lake;

Then following the eastern or northern bank of this brook to Cormacks Lake;

Then following a straight line in a generally northerly direction approximately 8 kilometres to a point on the headwaters of Little Barachois Brook;

Then following the northern bank of Little Barachois Brook to its intersection with the eastern boundary of the Barachois Pond Provincial Park;

Then following the eastern and northern boundaries of the park to the Trans Canada Highway;

Then following the Trans Canada Highway to the point of commencement.

(b) Main River/Upper Humber Area

All that area of the Island of Newfoundland, commencing at a tributary on Main River UTM 481,975 metres east 5,522,600 metres north;

Then following this tributary in a generally northerly direction to UTM 483,840 metres east 5,528,225 metres north;

Then following a straight line in a southeasterly direction to UTM 488,460 metres east 5,525,000 metres north;

Then following a straight line in an easterly direction to the eastern extremity of a small pond at UTM 498,485 metres east 5,525,000 metres north;

Then following the eastern shoreline of the pond to its outlet;

Then following a chain of brooks in a southerly direction to UTM 498,771 metres east 5,522,615 metres north;

Then following a straight line in a generally southeasterly direction to UTM 502,332 metres east 5,518,590 metres north;

Then following a straight line in a generally southwesterly direction to UTM 499,538 metres east 5,516,260 metres north;

Then following a straight line in a southerly direction to the outlet of a small pond at UTM 499,615 metres east 5,513,620 metres north;

Then following a stream that flows in a southerly direction to Main River;

Then following Main River in a westerly direction to a small tributary at UTM 495,570 metres east 5,510,540 metres north;

Then following that tributary and a chain of ponds in a generally westerly direction to where a small stream is intersected by the Upper Humber Forest Access Road at UTM 480,650 metres east 5,509,735 metres north;

Then following a straight line in a westerly direction to the east shore of a small pond at UTM 469,023 metres east 5,510,070 metres north;

Then following the north side of that pond and a connected tributary in a northwesterly direction to its intersection with the eastern boundary of Gros Morne National Park at UTM 466,335 metres east 5,510,602 metres north;

Then following the boundary of the park in a northerly direction to where it intersects a lake at UTM 461,750 metres east 5,529,000 metres north;

Then following the south shoreline of that lake in an easterly direction to its most eastern extremity;

Then following a straight line in an easterly direction to UTM 466,087 metres east 5,528,540 metres north;

Then following the southern shore of Parsons Pond River in an easterly direction to the point of commencement.

(c) Northwest Grand Lake Area

All that area of the Island of Newfoundland bounded by a line beginning at the intersection of the Trans Canada Highway, Route 1, and Camp 33 Road;

Then following Camp 33 Road to the southwest extremity of Grand Lake;

Then following the north shoreline of Grand Lake in a northeasterly direction to the Humber Canal;

Then following the south bank of the Humber Canal to its intersection with the TCH at Deer Lake;

Then following the TCH in a southwesterly direction to the point of commencement.

(d) Terra Nova Area

All that area of the Island of Newfoundland bounded by a line beginning at the intersection of North West River and the Terra Nova National Park, TNNP, boundary at UTM co-ordinates 706,250 metres east and 5,365,250 metres north;

Then following the north bank of the said river in a westerly direction to UTM coordinates 664,125 metres east and 5,346,625 metres north;

Then following a straight line in a northwesterly direction to UTM coordinates 663,750 metres east and 5,353,125 metres north;

Then following a straight line in a westerly direction to the northeastern extremity of Kepenkeck Lake;

Then following a straight line in a northwesterly direction to the eastern extremity of Newton's Lake;

Then following a straight line in a northerly direction to the eastern extremity of South West Pond;

Then following a straight line in a northeasterly direction to the western extremity of Dead Wolf Pond;

Then following the southern shoreline of Dead Wolf Pond to the mouth of a small stream entering the pond at its eastern extremity;

Then following this stream to its headwaters pond;

Then following a straight line for approximately 500 metres due east to an unnamed pond;

Then following a stream exiting this pond at its southeastern extremity;

Then following this stream in a southeasterly direction to its outflow in Riverhead Brook;

Then following this brook in an easterly direction to its mouth in Gambo Pond;

Then following the north shore of Gambo Pond to Gambo Brook;

Then following the west bank of Gambo Brook to its intersection with the Trans Canada Highway, TCH, Route 1;

Then following the TCH in an easterly direction to its intersection with the TNNP boundary;

Then following the western boundary of TNNP in a southerly direction to the point of commencement.

(e) Charlottetown Enclave Area

All that area of the Island of Newfoundland bounded by a line beginning at the intersection of the Terra Nova National Park, TNNP, boundary and the north shoreline of Clode Sound, Bonavista Bay at UTM coordinates 720,554 metres east and 5,367,279 metres north;

Then following the TNNP boundary in a northerly direction to UTM coordinates 720,507 metres east and 5,370,209 metres north;

Then following the TNNP boundary in a northeasterly direction to UTM coordinates 721,554 metres east and 5,371,792 metres north;

Then following the TNNP boundary in a southeasterly direction to its intersection with the north shoreline of Clode Sound, Bonavista Bay at UTM coordinates 722,550 metres east and 5,369,850 metres north;

Then following the shoreline of Clode Sound, Bonavista Bay in a southwesterly direction to the point of commencement.

(e.1) Red Indian Lake Area

All that area of the Island of Newfoundland bounded by a line beginning at the mouth of Victoria River and Red Indian Lake;

Then following the north bank of Victoria River in a south-westerly direction to Victoria Lake;

Then following a mid-way line between the north and south shorelines of Victoria Lake to the mouth of a small river entering Victoria Lake at its southwestern extremity;

Then following the north bank of the Victoria River to a point opposite the mouth of a brook flowing from Peter Strides Pond;

Then following a straight line in a northerly direction to the intersection of the Pine Marten Study Area and Lloyds River at the mouth of the brook flowing from Cormack Lake;

Then following the Pine Marten Study Area boundary along Lloyds River in a northeasterly direction to the mouth of Otter Pond Brook;

Then following the western bank of Otter Pond Brook, the western shore of Otter Pond and the west bank of Otter Pond Brook to Lake of the Hills;

Then following a straight line in a northwesterly direction to U.T.M. co-ordinates 471,250 metres east and 5,379,000 metres north;

Then following a straight line in a northeasterly direction to its intersection with Clench Brook at U.T.M. co-ordinates 500,875 metres east and 5,401,000 metres north;

Then following the south bank of Clench Brook to its mouth on Red Indian Lake;

Then following a straight line in an easterly direction to the point of commencement.

(f) Zone A - Southwest Coastal Zone

All that area of the Island of Newfoundland bounded by a line commencing at the intersection of the Trans Canada Highway, TCH, and Route 480, Burgeo Road;

Then following Route 480 to its intersection of Woody Hill Brook near Burgeo;

Then following Woody Hill Brook to its outflow at the coastline;

Then following the coastline of southwest Newfoundland, first in a westerly direction and then in a northeasterly direction to Main Gut at the mouth of St. George's River;

Then following the southern shoreline of St. George's River to its intersection with the TCH;

Then following the TCH to the point of commencement.

(g) Zone B - Northern Peninsula

All that area of the Island of Newfoundland lying north of a straight line from the southeast corner of Gros Morne National Park to the western inlet of Sop's Arm.

(h) Zone C - Remainder of the Island

All that area of the Island of Newfoundland not described in Zones A or B.

Schedule B

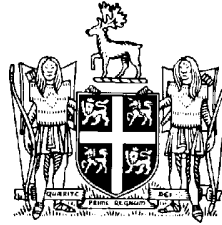
(a) Labrador North Fur Zone

All that area of Labrador, including offshore islands, lying north of a line commencing at a point on the coast at 54° north latitude, then west along 54° north latitude to its intersection with 62° west longitude, then north along 62° west longitude to 55° north latitude and then west along 55° north latitude to its intersection with the Labrador - Quebec boarder.

(b) Labrador South Fur Zone

All that part of Labrador, including offshore islands, not described in the Labrador North Fur Zone.

©Earl G. Tucker, Queen's Printer



NEWFOUNDLAND AND LABRADOR REGULATION 68/02

*Open Season Big Game Black Bear Hunting and Snaring
Order, Labrador, 2002-2003*

under the
Wild Life Regulations
and the
Wild Life Act

(Filed October 9, 2002)

Under the authority of sections 38, 92 and 114 of the *Wild Life Regulations* and the *Wild Life Act*, I make the following Order.

Dated at St. John's, October 4, 2002.

Julie Bettney
Minister of Tourism, Culture and Recreation

ORDER

Analysis

- | | |
|-----------------------|----------------|
| 1. Short title | 7. Bag limits |
| 2. Prohibition | 8. Prohibition |
| 3. Open seasons | 9. Repeal |
| 4. Devices permitted | |
| 5. Prohibited devices | Schedule |
| 6. Special licence | |

Short title

1. This Order may be cited as the *Open Season Big Game Black Bear Hunting and Snaring Order, Labrador, 2002-2003*.

Prohibition	2. The taking of black bear is prohibited throughout Labrador except as provided for in this Order.
Open seasons	3. (1) The open seasons for black bear hunting shall be (a) in the George River and Torngat Mountains Zones, August 10, 2002 to November 30, 2002 and April 1, 2003 to July 13, 2003; and (b) in the Labrador South Zone, September 1, 2002 to November 30, 2002 and April 1, 2003 to July 13, 2003. (2) The zones referred to in subsection (1) are described in the Schedule.
Devices permitted	4. Only Aldrich foot snares or similar devices may be set for the taking of black bears and those devices shall be set in a covered "cubby set" and clearly marked with a warning sign indicating that a bear snaring device is set in the "cubby".
Prohibited devices	5. Steel-jaw leghold, spring or jump traps shall not be used to take black bears.
Special licence	6. Persons who have resided in the Torngat Mountain Electoral District for a period of 6 consecutive months immediately before applying for a licence may be issued a licence identified as a special licence free of charge.
Bag limits	7. (1) The bag limit for residents shall be 2 black bears of any age or sex. (2) The bag limit for non-residents shall be 2 black bears of any age or sex. (3) Notwithstanding subsections (1) and (2), female black bears accompanied by cubs may not be taken by shooting.
Prohibition	8. A person shall not transport or possess any firearms under the authority of a valid game licence without being in possession of an outdoor identification card, or non-resident equivalent card, issued to the person.

*Open Season Big Game Black Bear Hunting and
Snaring Order, Labrador, 2002-2003*

68/02

Repeal

9. The *Open Season Big Game Black Bear Hunting and Snaring Order, Labrador, 2001-2002*, Newfoundland and Labrador Regulation 53/01, is repealed.

Schedule

(a) George River Zone

All that area of Labrador bounded by a line beginning at the point where the 54° 00' north latitude intersects the Labrador-Quebec boundary;

Then following this boundary in a generally northerly and easterly direction to the point where the most westerly of the rivers flowing into Hebron Fiord intersects that boundary at approximately 58° 06' north latitude;

Then following the south bank of this river and the south shoreline of Hebron Fiord in a generally easterly direction to the Atlantic Ocean coast line;

Then following this coast line in a generally southerly direction, including all offshore islands, to the north bank of the mouth of the Kanairiktok River;

Then following the north bank of that river to the confluence with the Sail Lake Tributary;

Then crossing the Kanairiktok River at the shortest distance to the east bank of the Sail Lake Tributary and following the east bank of the Sail Lake Tributary to the intersection with the Sail Lake Dikes, water control structures, on Michikamau Reservoir;

Then following a straight line to the north bank at the mouth of the McPhadyen River and Menihek Lake;

Then following the north bank of that river to the intersection with 54° 00' north latitude;

Then following the 54° 00' north latitude due west to point of commencement.

(b) Torngat Mountains Zone

All that area of Labrador, including adjacent offshore islands, lying north of the George River Zone as described above.

(c) Labrador South Zone

All that area of Labrador not included in the George River Zone and the Torngat Mountains Zone described above.

©Earl G. Tucker, Queen's Printer



**NEWFOUNDLAND AND LABRADOR
REGULATION 69/02**

*Open Season Fall Big Game Black Bear Hunting and
Snaring Order, Newfoundland, 2002*
under the
Wild Life Regulations
and the
Wild Life Act

(Filed October 9, 2002)

Under the authority of sections 38 and 114 of the *Wild Life Regulations* and the *Wild Life Act*, I make the following Order.

Dated at St. John's, October 4, 2002.

Julie Bettney
Minister of Tourism, Culture and Recreation

ORDER

Analysis

- | | |
|-----------------------|------------------------|
| 1. Short title | 5. Bag limits |
| 2. Fall open season | 6. Validity of licence |
| 3. Devices permitted | 7. Prohibition |
| 4. Prohibited devices | 8. Repeal |

Short title **1.** This Order may be cited as the *Open Season Fall Big Game Black Bear Hunting and Snaring Order, Newfoundland, 2002*.

Fall open season **2.** (1) The fall open season for the hunting and snaring of black bear shall be September 14, 2002 to November 2, 2002 in all moose management areas, except as follows:

Area No.	Season Dates
1	No open season
31	No open season
32	No open season
33	No open season
34	No open season
35	No open season
36	No open season
38	No open season
43	No open season
44	No open season
45	No open season
47	No open Season

(2) The moose management areas referred to in subsection (1) are described in the *Open Season Big Game Moose Hunting Order, Newfoundland, 2002-2003* except that

- (a) Moose Management Area 28 is further described, for black bear hunting only, to exclude

All that area of the Island of Newfoundland located in the district of Terra Nova, commencing at a point in the centre of the land-fill site at the northwestern edge of Terra Nova National Park;

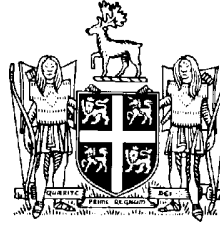
Then extending to a radius of 2 kilometres from that point in all directions, with an area of approximately 1,250 hectares and a perimeter of approximately 12,543 metres; and

- (b) moose management sub-areas do not apply to black bear hunting.

(3) Hunting black bear by bow and arrow only shall be permitted in Moose Management Areas 2, 3, 4, 5, 6, 7, 8, 9, 10, 11, 12, 13, 14, 15, 16, 17, 18, 19, 20, 21, 22, 23, 24, 25, 26, 27, 28, 29, 30, 37, 39, 40, 41, and 42 during the period August 31, 2002 to September 13, 2002.

Devices permitted	3. Only Aldrich foot snares or similar devices may be set for the taking of black bears and those devices shall be set in a covered "cubby set" and clearly marked with a warning sign indicating that a bear snaring device is set in the "cubby".
Prohibited devices	4. Steel-jaw leghold, spring or jump traps shall not be used to take black bears.
Bag limits	5. (1) The bag limit shall be one black bear of any age or sex. (2) Notwithstanding subsection (1), female black bears accompanied by cubs, may not be taken by shooting.
Validity of licence	6. Each fall season a black bear licence shall be valid only for the area for which it is issued.
Prohibition	7. A person shall not transport or possess firearms under the authority of a valid game licence without being in possession of an outdoor identification card, or non-resident equivalent card, issued to the person.
Repeal	8. <i>The Open Season Fall Big Game Black Bear Hunting and Snaring Order, Newfoundland, 2001, Newfoundland and Labrador Regulation 58/01, is repealed.</i>

©Earl G. Tucker, Queen's Printer



NEWFOUNDLAND AND LABRADOR REGULATION 70/02

*Open Season Spring Big Game Black Bear Hunting and Snaring
Order, Newfoundland, 2003*
under the
Wild Life Regulations
and the
Wild Life Act

(Filed October 9, 2002)

Under the authority of sections 38 and 114 of the *Wild Life Regulations* and the *Wild Life Act*, I make the following Order.

Dated at St. John's, October 4, 2002.

Julie Bettney
Minister of Tourism, Culture and Recreation

ORDER

Analysis

- | | |
|-----------------------|------------------------|
| 1. Short title | 5. Bag limits |
| 2. Spring open season | 6. Validity of licence |
| 3. Devices permitted | 7. Prohibition |
| 4. Prohibited devices | 8. Repeal |

Short title **1.** This Order may be cited as the *Open Season Spring Big Game Black Bear Hunting and Snaring Order, Newfoundland, 2003*.

Spring open season **2.** (1) The spring open season for the hunting and snaring of black bear shall be May 10, 2003 to July 12, 2003 in all moose management areas except as follows:

Area No.	Season Dates
1	No Open Season
31	No Open Season
32	No Open Season
33	No Open Season
34	No Open Season
35	No Open Season
36	No Open Season
38	No Open Season
43	No Open Season
44	No Open Season
45	No Open Season
47	No Open Season

(2) The moose management areas referred to in subsection (1) are described in the *Open Season Big Game Moose Hunting Order, Newfoundland, 2002-2003* except that Moose Management Area 28 is further described, for black bear hunting only, to exclude:

All that area of the Island of Newfoundland located in the district of Terra Nova, commencing at a point in the centre of the land-fill site at the northwestern edge of Terra Nova National Park;

Then extending to a radius of 2 kilometres from that point in all directions, with an area of approximately 1,250 hectares and a perimeter of approximately 12,543 metres.

Devices permitted

3. Only Aldrich foot snares or similar devices may be set for the taking of black bears and those devices shall be set in a covered "cubby set" and clearly marked with a warning sign indicating that a bear snaring device is set in the "cubby".

Prohibited devices

4. Steel-jaw leghold, spring or jump traps shall not be used to take black bears.

Bag limits

5. (1) The bag limit shall be one black bear of any age or sex.

*Open Season Spring Big Game Black Bear Hunting
and Snaring Order, Newfoundland, 2003*

70/02

(2) Notwithstanding subsection (1), female black bears accompanied by cubs may not be taken by shooting.

Validity of licence

6. Each spring season black bear licence shall be valid only for the area for which it is issued.

Prohibition

7. A person shall not transport or possess any firearms under the authority of a valid game licence without being in possession of an outdoor identification card, or non-resident equivalent card, issued to the person.

Repeal

8. The *Open Season Spring Big Game Black Bear Hunting and Snaring Order, Newfoundland, 2002*, Newfoundland and Labrador Regulation 60/01, is repealed.

©Earl G. Tucker, Queen's Printer



**NEWFOUNDLAND AND LABRADOR
REGULATION 71/02**

*Open Season Big Game Caribou Hunting Order,
Labrador, 2002-2003
under the
Wild Life Regulations
and the
Wild Life Act*

(Filed October 9, 2002)

Under the authority of sections 38, 92 and 114 of the *Wild Life Regulations* and the *Wild Life Act*, I make the following Order.

Dated at St. John's, October 4, 2002.

Julie Bettney
Minister of Tourism, Culture and Recreation

ORDER

Analysis

- | | |
|--------------------------|---------------------------------------|
| 1. Short title | 6. Special licence |
| 2. Hunting prohibited | 7. Regular licence |
| 3. Caribou hunting zones | 8. Non-resident licence |
| 4. Open seasons | 9. Requirements for obtaining licence |
| 5. Closed season | |

*Open Season Big Game Caribou Hunting Order,
Labrador, 2002-2003*

71/02

- | | |
|---|-------------------------|
| 10. Ammunition permitted | 14. Card to be returned |
| 11. Permits for Sheshashiu
Indian Band | 15. Prohibition |
| 12. Bag limits | 16. Repeal |
| 13. Jawbones of animals taken | Schedule |

Short title

1. This Order may be cited as the *Open Season Big Game Caribou Hunting Order, Labrador, 2002-2003*.

Hunting prohibited

2. The hunting of caribou is prohibited throughout Labrador except as provided for in this Order.

Caribou hunting
zones

3. The caribou hunting zones are as described in the Schedule.

Open seasons

4. (1) There shall be an open season in the George River and Torngat Mountain zones from August 10, 2002 to April 30, 2003 inclusive.

(2) Notwithstanding subsection (1), persons holding the special licence may take male caribou at any time.

(3) Open seasons may be declared for the various caribou hunting zones not having an open season if the George River caribou move into those zones.

Closed season

5. There shall be a closed season in the following zones:

- (a) Nipishish Lake Zone;
- (b) Mulligan River Zone;
- (c) Seal Lake Zone;
- (d) Double Mer Barrens Zone;
- (e) Grand Lake Zone;
- (f) Michikamau East Zone;
- (g) Twin Falls Zone;
- (h) Lac Virot Zone;

- (i) Sawbill Lake Zone;
- (j) Michikamau West Zone;
- (k) Colville Lake Zone;
- (l) Milner Lake Zone;
- (m) McPhayden River Zone; and
- (n) Orma South Zone.

Special licence

6. (1) A resident who has resided permanently in the Torngat Mountains Electoral District for a period of not less than 6 consecutive months immediately prior to applying for a licence may be issued a caribou hunting licence free of charge.

(2) A licence issued under subsection (1) shall be known as a special licence.

(3) The holder of a special licence may designate another resident of Labrador to use that licence provided that the person so designated

(a) holds or is entitled to hold a special licence; and

(b) is in possession of the licence while hunting.

(4) Special licences shall be valid only within the Torngat Mountain Zone, the George River Zone or any portion of a zone which is open and lies within the Torngat Mountains Electoral District.

Regular licence

7. (1) A resident who does not meet the residency requirements for a special licence under subsection 6(1) may be issued a caribou hunting licence.

(2) A licence issued under subsection (1) shall be known as a regular licence.

(3) The fee for a regular licence shall be \$27.

(4) A resident may be issued only one regular licence in a hunting season.

(5) The holder of a regular licence who has resided in Labrador for a period of 6 consecutive months immediately prior to applying for a licence, may designate another resident of Labrador to use that licence provided that the person so designated

- (a) holds or is entitled to hold either a special licence or a regular licence;
- (b) is in possession of the licence and a transfer form while hunting; and
- (c) assumes all responsibilities and obligations that are associated with the transferred licence.

Non-resident
licence

8. (1) A person who is not a resident may be issued a caribou hunting licence.

(2) A licence issued under subsection (1) shall be known as a non-resident licence.

(3) The fee for a non-resident licence shall be \$120.

Requirements for
obtaining licence

9. (1) To obtain a regular or special caribou hunting licence, the purchaser shall

- (a) produce 2 pieces of identification, one of which must contain his or her signature; and
- (b) sign the licence in the vendor's presence.

(2) To obtain a regular caribou hunting licence on behalf of another person, the person acquiring the licence shall

- (a) present 2 pieces of identification, one of which must contain his or her signature;
- (b) present a licence transfer form signed by the individual in whose name the licence is being issued; and
- (c) sign the transfer form in the vendor's presence.

(3) The licence number of a licence obtained under subsection (2) shall be recorded on the transfer form by the vendor.

(4) The vendor of a licence obtained under subsection (2) shall sign the transfer form.

Ammunition permitted

10. Caribou may be hunted using .22 calibre centre-fire rifles which have a muzzle energy of 1,500 foot pounds or more.

Permits for Sheshashiu Indian Band

11. The minister may issue to members of the Indian Band, Sheshashiu, permits authorizing the taking of caribou in any zone, subject to conditions and limits set in the permits.

Bag limits

12. The bag limit shall be

(a) for holders of the special licence, no limit;

(b) for holders of the regular licence, 2 caribou of either sex; and

(c) for holders of the non-resident licence, 2 caribou of either sex.

Jawbones of animals taken

13. All persons taking caribou are required to surrender the lower jawbones of all animals taken to a representative of the Inland Fish and Wildlife Division no later than May 1, 2003.

Card to be returned

14. Each licence holder is required to complete and return to the Inland Fish and Wildlife Division the self-addressed caribou harvest inventory card attached to the licence providing the results of his or her hunting effort within 2 weeks of successfully filling the licence or no later than May 1, 2003 for unsuccessful licence holders.

Prohibition

15. A person shall not transport or possess any firearms under the authority of a valid game licence without being in possession of an outdoor identification card, or non-resident equivalent card, issued to the person.

Repeal

16. The *Open Season Big Game Caribou Hunting Order, Labrador, 2001-2002*, Newfoundland and Labrador Regulation 54/01, is repealed.

Schedule

(a) George River Zone

All that area of Labrador bounded by a line beginning at the point where the 54° 00' north latitude intersects the Labrador-Quebec Boundary;

Then following this boundary in a generally northerly and/or easterly direction to the point where the most westerly of the rivers flowing into Hebron Fiord intersects that boundary at approximately 58° 06' north latitude;

Then following the south bank of this river and the south shoreline of Hebron Fiord in a generally easterly direction to the Atlantic Ocean coast line;

Then following this coast line in a generally southerly direction, including all offshore islands, to the north bank of the mouth of the Kanairiktok River;

Then following the north bank of the river to the confluence with the Sail Lake tributary;

Then crossing the Kanairiktok River at the shortest distance to the east bank of the Sail Lake Tributary and following the east bank of the Sail Lake Tributary to the intersection with the Sail Lake Dikes, water control structures, on Michikamau Reservoir;

Then following a straight line to the north bank at the mouth of the McPhayden River and Menihek Lake;

Then following the north bank of that river to the intersection with 54° 00' north latitude;

Then following the 54° 00' north latitude due west to point of commencement.

(b) Torngat Mountains Zone

All that area of Labrador, including adjacent offshore islands, lying north of the George River Zone as described in paragraph (a).

(c) Michikamau East Zone

All that portion of Labrador commencing at the intersection of 64° 00' west longitude and the north bank of the Churchill River;

Then following the Churchill River in a westerly direction of the Esker/Churchill Falls Access Road;

Then following the Esker/Churchill Falls Access Road in a westerly direction to 65° 22' west longitude at the Gabbro Water Control Structure;

Then following 65° 22' longitude in a northerly direction to the intersection of the south boundary of the George River Zone;

Then following the southern boundary of the George River Zone in an easterly direction to the intersection of the west boundary of the Orma North Zone at 64° 00' west longitude;

Then following the west boundary of first the Orma North Zone;

Then Orma South Zone, on 64° 00' west longitude in a due south direction to the point of commencement.

(d) Michikamau West Zone

All that area encompassed by a line commencing at the intersection of the south boundary of the George River Zone and 65° 22' west longitude;

Then following the south boundary of the George River Zone in a westerly direction to the intersection with the Quebec, North Shore and Labrador Rail Road;

Then following the Quebec, North Shore and Labrador Rail Road in a southerly direction to the connection with the Esker/Churchill Falls Access Road at the Esker Railway Siding;

Then following the Esker/Churchill Falls Access Road in an easterly direction to the intersection with the 65° 22' west longitude at the Gabbro Water Control Structure;

Then following the west boundary of the Michikamau East Zone in a generally northerly direction to the point of commencement.

(e) Twin Falls Zone

All that area encompassed by a line commencing at the Gabbro Water Control Structure;

Then following the Esker-Churchill Falls-Goose Bay Access Road in an easterly direction to its intersection with the Churchill River at Bowdoin Canyon;

Then following the north bank of the Churchill River in a generally southerly and easterly direction to the confluence of the Unknown River;

Then following the north bank of the Unknown River to its intersection with the Twin Falls Access Road;

Then following the Twin Falls Access Road in a southerly direction to the north west corner of Baikie Lake;

Then following the western shoreline of Baikie Lake in a southerly direction to the inflow of the Unknown River;

Then following the western and then northern bank of the Unknown River to the Ossokmanuam Water Control Structure;

Then following a straight line in a westerly direction to the intersection of the Trans-Labrador Highway with the west shoreline of the Ossokmanuam Reservoir;

Then following a straight line in a north westerly direction to the Gabbro Water Control Structure, the point of commencement.

(f) Colville Lake Zone

All that area encompassed by a line commencing at the intersection of the Trans-Labrador Highway and the west shore of Ossokmanuan Lake;

Then following the Trans-Labrador Highway in a westerly-southwesterly direction to the intersection with the Quebec, North Shore and Labrador Railway;

Then following the Quebec, North Shore and Labrador Railroad in a northerly direction to the Esker Railway Siding;

Then following the south boundary of the Michikamau West Zone in an easterly direction to the Gabbro Water Control Structure;

Then following the west boundary of the Twin Falls Zone in a southerly direction to the point of commencement.

(g) Lac Virot Zone

All that area encompassed by a line commencing at the intersection of the Trans-Labrador Highway and the Quebec, North Shore and Labrador Rail Road;

Then following the Trans-Labrador Highway in a westerly direction to the Nouveau Quebec-Labrador boundary;

Then following the Nouveau Quebec-Labrador Boundary in a generally northerly direction to the point nearest 67° 00' west longitude and 53° 24' 30" north latitude on the Nouveau Quebec-Labrador boundary;

Then following a straight line in a southeasterly direction to the point of commencement.

(h) Sawbill Lake Zone

All that area encompassed by a line commencing at the intersection of the Trans-Labrador Highway and the Quebec, North Shore and Labrador Rail Road;

Then following the west boundary of the Colville Lake Zone in a northerly direction to the bridge crossing over the Evening Lake River near the Sawbill Railway Siding;

Then following a straight-line in a southwesterly direction to 53° 24' 30" north latitude and 67° 00' west longitude on the Quebec-Labrador boundary;

Then following northeast boundary of the Lac Virot Zone in a southeasterly direction to the point of commencement.

(i) Milner Lake Zone

All that area encompassed by a line commencing at the Quebec, North Shore and Labrador Rail Road bridge crossing over the Evening Lake River;

Then following the Quebec, North Shore and Labrador Rail Road in a northerly direction to the intersection of the Esker-Churchill Falls Access Road at the Esker Railway Siding;

Then following a straight line across Menihek Lake to the north shore mouth of Milner Lake River;

Then following the north shoreline of the Milner Lake River to the intersection with Quebec-Labrador boundary at 53° 45' north latitude;

Then following the north Quebec-Labrador boundary in a southerly direction to the point on the Quebec-Labrador boundary nearest 53° 24' 30" north latitude and 67° 00' west longitude;

Then following the northwest boundary of the Sawbill Zone to the point of commencement.

(j) McPhayden River Zone

All that area bounded by the George River Caribou Management Zone on the north; the Michikamau West Zone on the east; the Milner Lake Zone on the south; and the north Quebec-Labrador boundary on the west.

(k) Bay of Islands Zone

All that area commencing at the western extremity of West Micmac Lake;

Then following the southern shoreline of Kaipokok River in a westerly direction to its headwaters;

Then following the south shoreline of a string of lakes to the eastern extremity of Belly Fish Lake;

Then following a straight line in a generally northwesterly direction to the Kanairiktok River at the point where it joins Snegamook Lake;

Then following the northern shoreline of Snegamook Lake in an easterly direction to Kanairiktok River;

Then following the south bank of the Kanairiktok River in a generally northeasterly direction to Kanairiktok Bay;

Then following the coastline of Kanairiktok Bay, Bay of Islands and Kaipokok Bay. To the mouth of the Kaipokok River;

Then following the southern shoreline of the Kaipokok River to West Micmac Lake;

Then following the southern shoreline of West Micmac Lake to the point of commencement.

(l) Orma North Zone

All that area encompassed by a line commencing where the southern boundary of the George River Zone intersects the Sail Lake Dikes;

Then following the Sail Lake River in a northerly direction to the Kanairiktok River;

Then following the north bank of Kanairiktok River to the intersection with $62^{\circ} 56'$ west longitude;

Then following that longitude due south to the intersection with the north shoreline of Pike Lake;

Then following the north shoreline of Pike Lake in a westerly direction to confluence with the Pike River;

Then following the north bank of Pike River west to the confluence with the Smallwood Reservoir;

Then following the south shoreline of Smallwood Reservoir in a westerly direction to a point of land at position approximately $53^{\circ} 59'$ north latitude $63^{\circ} 37'$ west longitude;

Then following a straight-line in a westerly direction to an east side of Michikamau West Zone at $54^{\circ} 00'$ north latitude and $64^{\circ} 00'$ west longitude;

Then following the east boundary of Michikamau West Area and $64^{\circ} 00'$ west longitude north to the intersection with the George River Zone;

Then following the south boundary of the George River Zone in an easterly direction to the point of commencement.

(m) Orma South Zone

All that area encompassed by a line commencing at the intersection of the north bank of Grand River and $64^{\circ} 00'$ west longitude;

Then following that longitude due north to the intersection with the southwestern boundary of the Orma North Zone;

Then following the Orma North Zone southern boundary in an easterly direction to the intersection with $62^{\circ} 56'$ west longitude;

Then following 62° 56' west longitude due south to the Metchin River outlet on an unnamed lake at position approximately 53° 36' north latitude and 62° 56' west longitude;

Then following the west bank of the Metchin River south to the Grand River;

Then following the north bank of Grand River west to the point of commencement.

(n) Big River Zone

All that area of Labrador commencing at the western extremity of West Micmac Lake;

Then following the southern shoreline of West Micmac Lake in a generally easterly direction to Kaipokok Bay;

Then following the southern shoreline of Kaipokok Bay to Cape Aillik;

Then following the coastline of the Labrador Sea in a generally southwesterly direction to the mouth of Big River;

Then following the northwesterly shoreline of Big River to White Bear River;

Then following the southerly shoreline of White Bear River to White Bear Lake;

Then following the southern shoreline of White Bear Lake to its western extremity;

Then following a straight line in a generally northwesterly direction to the western extremity of West Micmac Lake, the point of commencement.

(o) Nipishish Lake Zone

All that area encompassed by a line commencing at the western extremity of West Micmac Lake;

Then following a straight line in a generally southeastern direction to the western extremity of Little Michinappi, White Bear, Lake;

Then following a straight line in a generally southwestern direction to the southwest extremity of the unnamed lake at approximately 53° 56.5' north latitude, 60° 05' west longitude at the Mulligan River;

Then following a straight line in a generally westerly direction to the confluence of the Naskaupi and Red Wine rivers;

Then following the western and southern shorelines of the Naskaupi River and Naskaupi Lake in a generally northerly direction to the Narrows;

Then following the unnamed river draining Namaycush Lake to Namaycush Lake;

Then following the western shore of Namaycush Lake to its northern extremity;

Then following a straight line in a generally northerly direction to the southern extremity of Pocket Knife Lake;

Then following the western shore of Pocket Knife Lake to its northern extremity;

Then following a straight line in a generally northwesterly direction to the eastern extremity of Belly Fish Lake;

Then following the southern shoreline of the string of unnamed lakes in a generally northeasterly direction to the headwaters of the Kaipokok River;

Then following the southern shoreline of the Kaipokok River in a generally easterly direction to the point of commencement.

(p) Grand Lake Zone

All that area encompassed by a line commencing at the southern extremity of the unnamed lake at approximately

53° 56.5' north latitude, 60° 05' west longitude at the Mulligan River;

Then following the Mulligan River in a generally southerly direction to the confluence of the river with the unnamed river at approximately 53° 52' north latitude, 60° 05' west longitude;

Then following a straight line in a generally south-southwesterly direction to Mokami Hill;

Then following a straight line in a generally southwesterly direction to Ten Mile Point on Grand Lake;

Then following a straight line across Grand Lake to Cape Caribou;

Then following the southwest shoreline of Grand Lake and the shore of Nardini Pond to the Naskaupi River;

Then following the west shore of the Naskaupi River to the confluence of the river with the Red Wine River;

Then following a straight line in a generally easterly direction to the point of commencement.

(q) Seal Lake Zone

All that area encompassed by a line commencing at the intersection of 62° 56' west longitude and the north shoreline of Pike Lake;

Then following that longitude north to the intersection of the Kanairitok River;

Then following the north shoreline of the Kanairitok River to Snegamook Lake;

Then following a straight line in a generally southeasterly direction to the eastern extremity of Belly Fish Lake;

Then following a straight line in a generally southeasterly direction to the northern extremity of Pocket Knife Lake;

Then following the western shoreline of the lake to its southern extremity;

Then following a straight line to the northern extremity of Namayeush Lake;

Then following the western shoreline of the lake to the unnamed river draining it;

Then following that river to the Narrows;

Then following the western and southern shorelines of the Naskaupi River and Naskaupi Lake in a generally southerly direction to the confluence of the Naskaupi and Wapustan Rivers;

Then following the northern shorelines of the Wapustan River and the unnamed lake at the headwaters of the river to the western extremity of the lake at approximately 54° 09.5' north latitude and 61° 50' west longitude;

Then in a straight line in a generally westerly direction to the point of commencement.

(r) Double Mer Barrens

All that area of Labrador bounded by a line commencing at the intersection of Mulligan River Zone boundary with Valley Bight on Lake Melville;

Then following the north shore of Lake Melville in an easterly direction to Double Mer Point;

Then following a straight line in a northeasterly direction to Jewel Point in Groswater Bay;

Then following the north shoreline of Groswater Bay to Long Point;

Then following a straight line in a northwesterly direction to Green Point;

Then following the shoreline in a southwesterly direction to the north bank of Tom Luscombe Brook;

Then following the north bank of this brook to a tributary entering this brook at approximately 54° 20' 30" north latitude and 58° 31' 00" west longitude;

Then following this tributary to its source in Tom Luscombes Pond;

Then following a straight line to the junction of Big River and a tributary flowing out of Little Michinappi Lake;

Then following this tributary to Little Michinappi Lake and then the southern shoreline of this lake to its western extremity and the intersection of the Nipishish Lake Zone;

Then following the eastern boundary of this zone in a southwesterly direction to its intersection with Main River and the Mulligan River Zone;

Then following the boundaries of this zone along Main River and Double Mer Lake to the point of commencement.

(s) Mulligan River

All that area of Labrador commencing at the intersection of the eastern boundary of Nipishish Lake Zone and Main River, Double Mer River, at 54° 13' latitude and 59° 51' longitude;

Then following the eastern bank of Main River in a southeasterly direction to Double Mer Lake;

Then following the northern shoreline of Double Mer Lake to Whittles Point;

Then following a straight line in a southerly direction to Burnt Head on Lake Melville;

Then following the shoreline of Lake Melville in a westerly direction to Upper Long Point;

Then following a straight line in a southwesterly direction to Montagnais Point;

Then following a straight line in a westerly direction to the outlet of Little Lake;

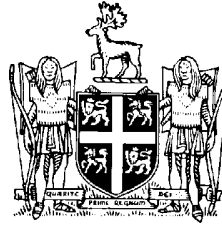
Then following the eastern then northern shoreline of Little Lake to The Rapids;

Then following a straight line to the closest point on the opposite shoreline;

Then following the shoreline to Grand Lake and the shoreline of Grand Lake in a northwesterly direction to the intersection of Grand Lake Zone at Cape Caribou;

Then following the eastern boundary of Grand Lake Zone and Nipishish Lake Zone to the point of commencement, on Main River, Double Mer River.

©Earl G. Tucker, Queen's Printer



NEWFOUNDLAND AND LABRADOR REGULATION 72/02

*Open Season Big Game Caribou Hunting Order,
Newfoundland, 2002-2003*
under the
Wild Life Regulations
and the
Wild Life Act

(Filed October 9, 2002)

Under the authority of sections 38 and 114 of the *Wild Life Regulations* and the *Wild Life Act*, I make the following Order.

Dated at St. John's, October 4, 2002.

Julie Bettney
Minister of Tourism, Culture and Recreation

ORDER

Analysis

- | | |
|-----------------------------|----------------|
| 1. Short title | 5. Bag limit |
| 2. Hunting prohibited | 6. Prohibition |
| 3. Caribou management areas | 7. Repeal |
| 4. Open seasons | |
- Schedule

Short title

1. This Order may be cited as the *Open Season Big Game Caribou Hunting Order, Newfoundland, 2002-2003*.

*Open Season Big Game Caribou Hunting
Order, Newfoundland, 2002-2003*

72/02

- Hunting prohibited
Caribou manage-
ment areas
2. The hunting of caribou is prohibited throughout the Island of Newfoundland, except as provided for in this Order.
3. The caribou management areas are as described in the Schedule.
- Open seasons
4. (1) The open seasons for the hunting of caribou in the areas described in the Schedule shall be

Area No.	Season Dates
61 to 64	Sept. 14, 2002 – Dec. 14, 2002
65	Closed
66-69	Sept. 14, 2002 - Dec. 14, 2002
70	Sept. 14, 2002 - Sept. 28, 2002
71	Sept. 7, 2002 - Nov. 9, 2002
72	Sept. 14, 2002 - Oct. 12, 2002
73	Closed
74	Closed
75	Closed
76 to 79	Sept. 14, 2002 - Dec. 14, 2002

(2) In addition to subsection (1), hunting by bow and arrow only shall be permitted in Areas 61, 62, 63, 64, 66, 67, 68, 69, 76, 77, 78 and 79 for the period August 31, 2002 to September 13, 2002.

- Bag limit
5. The bag limit is one caribou as specified in each licence, except a 2 caribou bag limit for resident licences in Area 71, Grey Islands.
- Prohibition
6. A person shall not transport or possess any firearm under the authority of a valid game licence without being in possession of an outdoor identification card, or equivalent non-resident card issued to the person.
- Repeal
7. ***The Open Season Big Game Caribou Hunting Order, Newfoundland, 2001-2002 Newfoundland and Labrador Regulation 55/01, is repealed.***

Schedule

(a) Area 61 - LaPoile

All that area of the Island of Newfoundland commencing at the southeastern branch of the Southwest Brook;

Then following a straight line in a southeasterly direction to the northern extremity of Cormacks Lake;

Then following a straight line in a southerly direction to King George IV Lake at the start of Lloyd's River;

Then following Lloyd's River to Lloyd's Lake;

Then following a straight line in a southeasterly direction to the northern extremity of Burnt Pond;

Then following the shoreline of Burnt Pond and the river leading to White Bear Lake the shoreline of White Bear Lake and the western bank of White Bear River to White Bear Bay;

Then following the coastline in a generally westerly direction to Channel-Port aux Basques;

Then following the TCH in a northerly direction to where it crosses the Southwest Brook;

Then following Southwest Brook to the point of commencement but excluding all offshore islands.

(b) Area 62 - Buchans Plateau

All that area of the Island of Newfoundland bounded by a line beginning at the Trans Canada Highway, TCH, Bridge crossing Southwest Brook;

Then following the TCH in a generally northeasterly direction to Camp 33 Road;

Then following Camp 33 Road to the southwestern extremity of Grand Lake;

Then following the southern and eastern shoreline of Grand Lake to the mouth of Hinds Brook;

Then following Hinds Brook to Hinds Lake;

Then following the southwestern shore of Hinds Lake to its southeastern extremity;

Then following a straight line to the southern extremity of Buchans Lake;

Then following a straight line to the western abutment of the Exploits Dam;

Then following the southern shoreline of Red Indian Lake to the mouth of Lloyds River;

Then following the southern bank of Lloyds River to Lloyds Lake;

Then following the southern shore of Lloyds Lake and Lloyds River to King George IV Lake;

Then following a straight line in a northeasterly direction to the northern extremity of Cormacks Lake;

Then following a straight line in a northwesterly direction to the southeastern branch of Southwest Brook;

Then following Southwest Brook to the point of commencement.

(c) Area 63 - Grey River

All that area of the Island of Newfoundland bounded by a line beginning at the mouth of White Bear River in White Bear Bay;

Then following the western bank of White Bear River to White Bear Lake;

Then following the shoreline of White Bear Lake in a generally northerly direction to the brook flowing into White Bear Lake from Burnt Pond;

Then following the eastern bank of said brook to Burnt Pond;

Then following the shoreline of Burnt Pond in a generally northerly direction to its northeasterly extremity;

Then following a straight line in a northeasterly direction to the southwestern extremity of Lloyds Lake;

Then following the shoreline of Lloyds Lake to the outflow of Lloyds River at its northeastern extremity;

Then following the southern bank of Lloyds River to its mouth in Red Indian Lake;

Then following the southern shoreline of Red Indian Lake in a generally northeasterly direction to the western abutment of the Exploits Dam on the Exploits River;

Then following the south bank of the Exploits River to the mouth of Stoney Brook;

Then following a straight line in a south-southwesterly direction for approximately 550 metres to the intersection of the Chrystal Lake access road and the Lemotte's Lake access road at the approximate UTM coordinates 597,250 metres east, 5,419,250 metres north;

Then following the road to Chrystal Lake to its intersection with the brook feeding the eastern arm of Chrystal Lake;

Then following the brook to its outflow at Chrystal Lake;

Then following the southeastern shore of Chrystal Lake to its southern extremity;

Then following a straight line in a southwesterly direction to the eastern extremity of Pistol Lake;

Then following a straight line in a southerly direction to the mouth of Northwest Brook in Bay d'Espoir;

Then following the coastline in a generally westerly direction to the point of commencement but excluding all offshore islands.

(d) Area 64 - Middle Ridge

All that area of the Island of Newfoundland beginning at the mouth of Southeast Brook in Bay D'Espoir;

Then following Southeast Brook to Route 361;

Then following Route 361 to the Bay D'Espoir Highway, Route 360;

Then following the Bay d'Espoir Highway in generally northerly direction to the Northwest Gander River;

Then following the south bank of Northwest Gander River and the southern shoreline of Gander Lake to the eastern extremity of Gander Lake;

Then following a straight line to the closest point of the TCH, Route 1;

Then following the TCH in a generally easterly direction to its intersection with the road leading to the abandoned Alexander Bay Railway Station;

Then following this road to the T'Railway;

Then following the T'Railway in a generally southerly direction to Goobies;

Then following the Goobies - Terrenceville Highway, Routes 11 and 15, in a generally southwesterly direction to Terrenceville;

Then following the coastline of Fortune Bay, Hermitage Bay, and Bay D'Espoir to the point of commencement but excluding all offshore islands.

(e) Area 65 - Avalon Peninsula

All that area of the Island of Newfoundland on the Avalon Peninsula bounded by a line beginning at the intersection of Witless Bay Line, Route 13, and the Trans Canada Highway, TCH;

Then following Witless Bay Line to the coastline of Witless Bay;

Then following the coastline in a generally southerly direction to Cape Race;

Then following the coastline of Trepassey Bay to the mouth of Northeast Brook;

Then following the western shoreline of the brook to the Southern Shore Highway, Route 10;

Then following the highway in a generally westerly direction to Peter's River;

Then following the eastern bank of Peter's River to its mouth in Holyrood Bay;

Then following the shoreline of Holyrood Bay and St. Mary's Bay to Salmonier Arm;

Then following the southern shoreline of Salmonier Arm to the closest point of Salmonier Line, Route 90, at St. Catherine's;

Then following Salmonier Line in a generally northerly direction to its intersection with the TCH;

Then following the TCH in a generally easterly direction to the point of commencement but excluding the Salmonier Nature Park and excluding all offshore islands.

(f) Area 66 - Gaff Topsails

All that area of the Island of Newfoundland bounded by a line beginning at the mouth of Hinds Brook in Grand Lake;

Then following the eastern shoreline of Grand Lake, Sandy Lake and Birchy Lake to the eastern extremity of Birchy Lake;

Then following a straight line to the closest point on the TCH;

Then following the TCH in a generally easterly and southerly direction to Badger;

Then following a straight line to the closest point on the south bank of the Exploits River;

Then following the Exploits River to Exploits Dam;

Then following a straight line in a northwesterly direction from the western abutment of Exploits Dam to the southern extremity of Buchans Lake;

Then following a straight line in a northwesterly direction to the southeastern extremity of Hinds Lake;

Then following the southern and western shoreline of Hinds Lake to its outlet in Hinds Brook;

Then following the south bank of Hinds Brook to the point of commencement.

(g) Area 67 - Pot Hill

All that area of the Island of Newfoundland beginning at the mouth of Southeast Brook in Bay D'Espoir;

Then following the coastline of Bay D'Espoir to the mouth of Northwest Brook, Bay D'Espoir;

Then following a straight line in a northwesterly direction to the eastern extremity of Pistol Lake;

Then following a straight line in a northeasterly direction to the southern extremity of Chrystal Lake;

Then following the southeastern shore of Chrystal Lake to the mouth of the brook feeding its eastern arm;

Then following the brook to its intersection with the Chrystal Lake access road;

Then following this road to its intersection with the Lemotte's Lake access road at the approximate UTM coordinates 597,250 metres east, 5,419,250 metres north;

Then following a straight line in a north-northeasterly direction for approximately 550 metres to the mouth of Stoney Brook in the Exploits River;

Then following the south bank of the Exploits River to the Sir Robert Bond Bridge, Trans Canada Highway, TCH, Route 1;

Then following the TCH to its intersection with the Bay D'Espoir Highway, Route 360;

Then following the highway to its intersection with Route 361;

Then following Route 361 to Southeast Brook;

Then following Southeast Brook to the point of commencement.

(h) Area 68 - Mount Peyton

All that area of the Island of Newfoundland bounded by a line beginning at the southeastern abutment of the bridge on the Bay D'Espoir Highway, Route 2, crossing the Northwest Gander River;

Then following the Bay D'Espoir Highway in a generally northerly direction to its intersection with the Trans Canada Highway, TCH, Route 1;

Then following the TCH in a generally easterly direction to the southwestern abutment of the Queen Elizabeth Bridge crossing the Gander River;

Then following the west bank of the Gander River and the western shoreline of Gander Lake to the mouth of the Northwest Gander River;

Then following the north bank of the Northwest Gander River to the point of commencement.

(i) Management Area 69 - Northern Peninsula

All that area of the Island of Newfoundland commencing at the mouth of Cloud River where it flows into Salt Water Pond;

Then following the southern shoreline of Salt Water Pond, the western coastline of Chimney Bay, the western coastline of Canada Bay, and the western coastline of White Bay to Sops Arm;

Then following the northern bank of Main River in a generally westerly direction to UTM co-ordinates 487,921 metres east and 5,516,970 metres north;

Then following a straight line to the opposite bank of Main River;

Then following a straight line in a southwesterly direction to the boundary of Gros Morne National Park at UTM co-ordinates 466,862 metres east and 5,500,135 metres north;

Then following the boundary of Gros Morne National Park in a generally northerly direction to a point where the park boundary crosses the Northern Peninsula Highway at UTM co-ordinates 446,900 metres east and 5,535,096 metres north;

Then following the Northern Peninsula Highway in a generally northerly direction to Hawke's Bay;

Then following a straight line in a northeasterly direction to the headwaters of Cloud River;

Then following the south bank of Cloud River to the point of commencement but excluding all offshore islands.

(j) Area 70 - Merasheen Island

Merasheen Island, Placentia Bay, including adjacent Long, King, and Rose au Rue Islands.

(k) Area 71 - Grey Islands, White Bay

(l) Area 72 - Fogo Island, Hamilton Sound

(m) Area 73 - Burin Peninsula Knee

All that area of the Island of Newfoundland bounded by a line beginning where Piper's Hole River crosses the Terrenceville Highway;

Then following the coastline in a generally southwesterly direction to Mortier Bay;

Then following the highway crossing this bay to Marystown;

Then following Route 210 and 213 in a northwesterly direction to Garnish;

Then following the coastline in a generally northerly direction to Terrenceville;

Then following the Routes 211 and 210 to the point of commencement.

(n) Area 74 - Burin Peninsula Foot

All that area of the Island of Newfoundland bounded by a line beginning at Garnish;

Then following Route 213 in a southeasterly direction to 210;

Then following Route 210 in an easterly direction to where this road crosses Mortier Bay;

Then following the east coastline of Placentia Bay, Lawn Bay, Fortune Bay to the point of commencement.

(o) Area 75 - Blow Me Down Mountains

All that area of the Island of Newfoundland bounded by a line beginning at the western end of Serpentine Lake;

Then following the Serpentine River in a westerly direction to the coast;

Then following the coastline of the Gulf of St. Lawrence in a generally northerly direction to South Head, Bay of Islands;

Then following the coastline of Bay of Islands in a southerly and easterly direction to Frenchmans Head;

Then following the southern shoreline of Humber Arm to Cook's Brook;

Then following Cook's Brook to a point where this brook crosses a road leading to Serpentine Lake;

Then following this road to the eastern end of Serpentine Lake;

Then following the northern shoreline of Serpentine to the point of commencement.

(p) Area 76 - St. Anthony

All that area of the Island of Newfoundland bounded by a line beginning at the western extremity of Crouse Harbour on the Conche Peninsula;

Then following a straight line to the nearest point on Route 434;

Then following Route 434 in westerly direction to its intersection with Route 433;

Then following Route 433 in a northwesterly direction to its intersection with Route 432;

Then following Route 432 in a westerly direction to its intersection with Route 430;

Then following Route 430 in a northerly direction to the point where it intersects a small stream flowing from Grand Pond;

Then following said stream to its outflow into the Strait of Belle;

Then following the eastern coastline of the Strait of Belle Isle in a generally northeasterly direction to Cape Norman;

Then following the coastline of Pistolet Bay to the eastern extremity of Milnar Arm;

Then following a straight line to the closest point on Route 437;

Then following Route 437 to its intersection with Route 436;

Then following Route 436 to its intersection with Route 430;

Then following Route 430 in a generally southeasterly direction to its end at Loup Marin Point;

Then following a straight line to the coastline in Hare Bay;

Then following the coastline of Hare Bay in a generally southerly direction to the point of commencement but excluding all offshore islands.

(q) Area 77 - Cape Shore

All that area of the Island of Newfoundland bounded by the line beginning at the intersection of Routes 100 and 91 at Point Verde;

Then following the Argentia Highway, Route 91, in a generally easterly direction to the intersection of Route 92;

Then following Route 92 in a generally southerly direction to Branch;

Then continuing to follow Route 92 to Route 100;

Then following Route 100 in a generally westerly direction to St. Brides;

Then continuing to follow Route 100 in a generally northerly direction to the point of commencement at Point Verde but excluding all offshore islands.

(r) Area 78 - Hampden Downs

All that area of the Island of Newfoundland bounded by a line beginning at the intersection of Route 410 with Route 411 at Flatwater Pond;

Then following Route 410 in a generally southerly direction to its intersection with the Trans Canada Highway, Route 1, TCH, then following the TCH in a southwesterly direction to its intersection with an unnamed road located northeast of Birchy Lake;

Then following the unnamed road in a westerly direction to its intersection with Route 420;

Then following Route 420 to its intersection with Route 421;

Then following Route 421 to its end at the Beaches;

Then following a straight line in a westerly direction to the high water mark on the east shoreline of White Bay;

Then following the high water mark in a northeasterly direction to its intersection with Route 411 at Purbeck's Brook Bridge;

Then following Route 411 to the point of commencement but excluding all offshore islands.

(s) Area 79 - Adies Lake

All that area of the Island of Newfoundland bounded by a line beginning at the southern extremity of White Bay;

Then following a straight line to the nearest point on Route 421, Hampden Highway;

Then following Route 421 in a southerly direction to its intersection with Route 420;

Then following Route 420 in a southerly direction to its intersection with the Trans Canada Highway, TCH;

Then following the TCH in a southwesterly direction to its intersection with Route 430 near Deer Lake;

Then following Route 430 in a northwesterly direction to its intersection with the boundary of Gros Morne National Park near Wiltondale;

Then following the eastern boundary of Gros Morne National Park in a generally northerly direction to UTM co-ordinates 466,862 metres east and 5,500,135 metres north;

Then following a straight line in a northeasterly direction to a point on Main River located at UTM co-ordinates 487,921 metres east and 5,516,970 metres north;

Then following the south bank of said river in a generally easterly direction to its outflow in Sops Arm, White Bay;

Then following the western coastline of White Bay in first an easterly and then a southerly direction to the point of commencement but excluding all offshore islands.

©Earl G. Tucker, Queen's Printer



**NEWFOUNDLAND AND LABRADOR
REGULATION 73/02**

*Open Season Big Game Moose Hunting Order,
Labrador, 2002–2003
under the
Wild Life Regulations
and the
Wild Life Act*

(Filed October 9, 2002)

Under the authority of sections 38 and 114 of the *Wild Life Regulations* and the *Wild Life Act*, I make the following Order.

Dated at St. John's, October 4, 2002.

Julie Bettney
Minister of Tourism, Culture and Recreation

ORDER

Analysis

- | | |
|---------------------------|----------------|
| 1. Short title | 5. Bag limit |
| 2. Prohibition | 6. Prohibition |
| 3. Moose management areas | 7. Repeal |
| 4. Open season | |

Schedule

*Open Season Big Game Moose Hunting Order,
Labrador, 2002-2003*

73/02

Short title	1. This Order may be cited as the <i>Open Season Big Game Moose Hunting Order, Labrador, 2002-2003</i> .	
Prohibition	2. The taking of moose is prohibited throughout Labrador, except as provided for in this Order.	
Moose management areas	3. The moose management areas are as described in the Schedule.	
Open season	4. The open season for moose hunting shall be	
	Area No.	Season Dates
	48	Sept. 14, 2002 - Jan. 4, 2003
	49 and 50	Sept. 14, 2002 - Mar. 15, 2003
	51, 52, and 53	Sept. 14, 2002 - Jan. 4, 2003
	53A, 54, 55 and 56	Sept. 14, 2002 - Mar. 15, 2003
	57 and 58	Sept. 14, 2002 - Jan. 4, 2003
	59 and 60	Sept. 7, 2002 - Mar. 15, 2003
	85	Sept. 14, 2002 - Mar. 15, 2003
Bag limit	5. The bag limit shall be one moose per licence.	
Prohibition	6. A person shall not transport or possess any firearms under the authority of a valid game licence without being in possession of an outdoor identification card, or non-resident equivalent card, issued to that person.	
Repeal	7. The <i>Open Season Big Game Moose Hunting Order, Labrador, 2001-2002</i> , Newfoundland and Labrador Regulation 56/01, is repealed.	

Schedule

(a) Area 48 - Wabush

All that area encompassed by a line commencing at the intersection of the Quebec-Labrador border and 53° 20' north latitude;

Then moving due east to the west shore of Lac Boujonnier;

Then following this shoreline in a southerly direction to the outflow of a river flowing to Bruce Lake;

Then following this river to Bruce Lake;

Then following the shorelines of Bruce Lake, Pegrum Lake, Nault Lake, Steers Lake, and the unnamed rivers interconnecting these lakes;

Then to the north shore of Shabogamo Lake;

Then following Shabogamo Lake to its intersection with 53° 18.5' north latitude;

Then due east to the Quebec North Shore and the Labrador Railway at Shabo;

Then following the railway in a generally southerly direction to Ross Bay Junction;

Then in a generally westerly direction to the east shore of Lac Emerillion;

Then following the shoreline of Lac Emerillion in a generally southerly direction to 66° 22' west longitude;

Then due south to the Labrador-Quebec border;

Then following the border in generally west and north directions to the point of commencement.

(b) Area 49 - Lower Mecatina

All that area of Labrador bounded by a line commencing at the southeast corner of Area 59;

Then following 59° 50' west longitude south to the Quebec Labrador boundary, 52° 00' north latitude;

Then following the Quebec-Labrador boundary due west to 61° 30' west longitude;

Then following 61° 30' west longitude due north to the southwest corner of Area 59;

Then following the south boundary of Area 59 to the point of commencement.

(c) Area 50 - Natashquan

All that area of Labrador bounded by a line commencing at the southeast corner of Area 60;

Then following the south boundary of Area 60 due west the east bank of the Romaine River;

Then following the east bank of the Romaine River, Quebec-Labrador boundary, in a southeasterly direction to the Labrador-Quebec boundary at 52° 00' north latitude;

Then following 52° 00' north latitude due east to the southeast corner of Area 49;

Then following the west border of Area 49 at 61° 30' west longitude due north to the point of commencement.

(d) Area 51 - Grand Falls

All that area of Labrador bounded by a line commencing at the edge of the west bank of the Metchin River where the river intersects the Churchill Road;

Then following the edge of the west bank of the river in a generally northerly direction to its intersection with an unnamed lake at 53° 33' north latitude, 63° 11' west longitude;

Then following a straight line in a generally westerly direction to the summit of Lookout Mountain;

Then following a straight line in a generally northwesterly direction to the summit of an unnamed hill at elevation, 556 metres, 53° 41' north latitude, 64° 29' west longitude;

Then following a straight line in a general southwesterly direction to the intersection of Route 500 and Esker Road;

Then following Route 500 to where the transmission lines cross Route 500, west of the Ossokmanuan bridge;

Then following a straight line in a general southerly direction to the summit of an unnamed hill, elevation 673 metres, 53° 23' north latitude, 65° 07' west longitude;

Then following a straight line in a southeasterly direction to the intersection of the west bank of the Atikonak River and the 735 transmission line;

Then following a straight line in a northeasterly direction to the summit of an unnamed hill of elevation 643 metres, 53° 14' north latitude, 64° 5' west longitude;

Then following a straight line in a northeasterly direction to the summit of an unnamed hill at elevation 456 metres, 53° 11' north latitude, 63° 14' west longitude;

Then following a straight line in a generally easterly direction to 53° 12" north, 63° 30" west longitude;

Then following a straight line in a northerly direction to the west bank at the mouth of the Metchin River;

Then following the edge of the west bank of the river north to the point of commencement.

(e) Area 52 - Grand River

All that area of Labrador bounded by a line commencing at the southeast corner of Area 51, 53° 10' north latitude, 63° 00' west longitude;

Then following 63° 00' west longitude due south to the intersection with 53° 00' north latitude;

Then following a straight line in an easterly-southeasterly direction to the edge of the west bank of the Minipi River at 52° 46' north latitude, 61° 30' west longitude;

Then following 61° 30' west longitude due north to the intersection with the edge of the north bank of the Churchill River;

Then following the north bank of the river to the west bank at the mouth of Penus River;

Then following the edge of the west bank of the Penus River to its intersection with 61° 30' west longitude;

Then following 61° 30' west longitude due north to the intersection with the edge of the south bank of the Goose River;

Then following a straight line in a westerly direction to the boundary of Area 51 at 53° 33' north latitude, 63° 11' west longitude;

Then following the boundary of Area 51 to its point on the west bank of the Metchin River at its outflow into Churchill River;

Then following a straight line in a southerly direction to 53° 12' north, 63° 30' west longitude;

Then following a straight line in an easterly direction to 53° 10' north, 63° 00' west longitude;

Then following a straight line in a southerly direction to the point of commencement.

(f) Area 53 - Muskrat Falls

All that area of Labrador bounded by a line commencing at the northeast corner of Area 52;

Then following a straight line in a northeasterly direction to the top of the 1225' peak at Cape Law, on the southwest end of Grand Lake;

Then following a straight line in a southeasterly direction to the top of the 1445' peak at Cape Caribou;

Then following a straight line in a southeasterly direction to the confluence of 53° 31.55' north latitude and 60° 12.05' longitude on the North West River Road;

Then following the North West River Road to the North West River Bridge at the crossing between Little Lake and North West Bight;

Then following the south, then east, shoreline of North West Bight to Sandy Point;

Then following a straight line in a southwesterly direction to the north shore of Churchill, Grand, River;

Then following the north shore of the Grand River to the intersection with the east boundary of Area 52;

Then following the east boundary of Area 52 due south to the point of commencement.

(g) Area 53A - Muskrat Falls

All that area of Labrador commencing at the southwest corner of Area 53;

Then following the south boundary of Area 53 in an easterly direction to North West Point;

Then following a straight line in an easterly direction to McLean Point;

Then following the eastern shoreline of Carter Basin to the confluence of Kenemich River;

Then following the edge of the east bank of Kenemich River to a point at 53° 14' north latitude, 59° 50' west longitude, where the Kenemich River turns to flow from a generally east-northeasterly direction from the Mealy Mountains;

Then following 59° 50' west longitude, due south to 53° 10' north latitude, 59° 50' west longitude;

Then following a straight line to the confluence of Kenamu River and a river locally known as South Branch River;

Then following a straight line to the southeast corner of Area 52 at 52° 46' north latitude, 61° 30' west longitude;

Then following the east boundary of Area 52 due north to the point of commencement.

(h) Area 54 - Grand Lake

All that area of Labrador commencing at the northwest corner of Area 53 and following 61° 30' west longitude due north to the edge of the north bank of the Wapustan River;

Then following a straight line to the confluence of Nipishish Lake and Crooked River;

Then following a straight line to the position 53° 45' north latitude, 60° 15' west longitude;

Then following a straight line to the summit of Sunday Hill in the town of North West River;

Then following a straight line to the south abutment of North West River;

Then following the North West River Road to the confluence of 53° 31.55 north latitude and 60° 12.5' west longitude;

Then following the boundary of Area 53 to the point of commencement.

(i) Area 55 - Double Mer

All that area of Labrador bounded by a line commencing at the south abutment of the North West River Bridge and following the shore line of Hamilton Inlet in a generally northeasterly direction to the confluence of Groswater Bay and the edge of the east bank of Tom Luscombe Brook;

Then following a straight line to the northeast corner of Area 54 where Nipishish Lake flows into Crooked Brook;

Then following the east boundary of Area 54 generally in a southeasterly direction to the point of commencement, excluding all offshore islands.

(j) Area 56 - Kaipokok

All that area of Labrador bounded by a line commencing at the northeast corner of Area 54 where Nipishish Lake flows into the Crooked River;

Then following a straight line in a northwesterly direction to a point on the Kaipokok Lake at 54° 30' north latitude, 61° 00' west longitude;

Then proceeding in a straight line in a northeasterly direction to a point on the south bank of the Kanoiriktok River at 54° 49' 5" north latitude, 60° 30' west longitude;

Then proceeding in a straight line in an easterly direction to the 450 metre summit of Post Hill at 54° 53' 30" north latitude, 59° 45' west longitude;

Then following 59° 45' west longitude due south to the intersection with the north boundary of Area 55;

Then following the north boundary of Area 55, in a south-westerly direction, to the point of commencement.

(k) Area 57 - Paradise River

All that area of Labrador bounded by a line commencing at a point 52° 45' north latitude, 58° 00' west longitude;

Then following 58° 00' west longitude due north to the intersection with 54° 00' north latitude;

Then following 54° 00' north latitude due east to the intersection with the Labrador Coast;

Then following the Labrador Coast in a generally southerly direction, including all the offshore islands, to the North Shore of Caplin Bay;

Then following the North Shore of Caplin Bay in a generally westerly direction to the intersection with 55° 55' west longitude at 53° 07' 20" north latitude;

Then following 53° 07' 20" north latitude in a westerly direction to the intersection with 57° 00' west longitude;

Then following a straight line in a southwesterly direction to the point of commencement.

(l) Area 58 - Alexis River

All that area of Labrador bounded by a line commencing at the southwest corner of Area 57, as described in paragraph (k);

Then following 58° 00' west longitude due south to the Labrador-Quebec border at 52° 00' north latitude;

Then following the 52° 00' north latitude due east to the Labrador coast;

Then following the Labrador coastline in a generally northerly direction, including all the offshore islands, to the north shore of Caplin Bay;

Then following the south boundary of Area 57 to the point of commencement.

(m) Area 59 - Upper Kenamu

All that area of Labrador bounded by a line commencing at the southeast corner of Area 53A, 53° 10' north latitude, 59° 50' west longitude;

Then following 59° 50' west longitude due south to 52° 30' north latitude;

Then following 52° 30' north latitude due west to 61° 30' west longitude;

Then following 61° 30' west longitude due north to the southwest corner of Area 53A;

Then following the south boundary of Area 53A to point of commencement.

(n) Area 60 - Upper Mecatina

All that area of Labrador bounded by a line commencing at the southeast corner of Area 52;

Then following the south boundaries of Areas 52 and 51 in a generally westerly direction to a point on the south boundary of Area 51 at the summit of an unnamed hill of elevation 9,643 metres, 53° 14' north latitude, 64° 05' west longitude;

Then following a straight line in a southeasterly direction to the east bank of the source of the Romaine River at 52° 52' 5" north latitude, 63° 36' 5" west longitude;

Then following the east bank of the Romaine River, Quebec-Labrador boundary, in a southerly direction to the intersection with 52° 30' north latitude;

Then following 52° 30' north latitude east to longitude 61° 30' west;

Then following $61^{\circ} 30'$ west longitude due north to the point of commencement.

(o) Area 85 - Snegamook

All that area bounded by a line commencing at the outflow of Nipishish Lake at the Crooked River;

Then following in a north-northwesterly direction to the point at $54^{\circ} 30'$ North, $61^{\circ} 00'$ west;

Then in a northerly direction to $54^{\circ} 41'$ north, $61^{\circ} 00'$ west;

Then in a westerly direction to the unnamed river flowing into Mistinippi Lake at approximately $54^{\circ} 41'$ north, $61^{\circ} 18'$ west;

Then in a generally westerly direction on the south bank of the river to the western extremity of the unnamed lake at approximately $54^{\circ} 44'$ north, $61^{\circ} 46'$ west;

Then in a straight line in a north-northwesterly direction to the southern extremity of the unnamed lake at $54^{\circ} 47'$ north, $61^{\circ} 48'$ west;

Then in a generally northerly direction along the western shore of the above mentioned lake;

Then in a generally northerly, westerly then southerly directions along the unnamed river to approximately $54^{\circ} 46'$ north, $62^{\circ} 00'$ west;

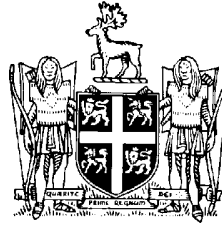
Then in a westerly direction to $54^{\circ} 46'$ north, $62^{\circ} 30'$ west;

Then in a southerly direction to the Naskaupi River at approximately $54^{\circ} 15'$ north, $62^{\circ} 30'$ west;

Then in a generally easterly then southerly directions along the north bank of the Naskaupi River and Wuchusk Lake, and east bank of Naskaupi Lake to the confluence of the Wapustan and Naskaupi Rivers;

Then following a straight line in a general easterly direction
to the point of commencement.

©Earl G. Tucker, Queen's Printer



NEWFOUNDLAND AND LABRADOR REGULATION 74/02

*Open Season Big Game Moose Hunting Order,
Newfoundland, 2002-2003*
under the
Wild Life Regulations
and the
Wild Life Act

(Filed October 9, 2002)

Under the authority of sections 38 and 114 of the *Wild Life Regulations* and the *Wild Life Act*, I make the following Order.

Dated at St. John's, October 4, 2002.

Julie Bettney
Minister of Tourism, Culture and Recreation

ORDER

Analysis

- | | |
|---------------------------|----------------|
| 1. Short title | 5. Bag limit |
| 2. Moose management areas | 6. Prohibition |
| 3. Open seasons | 7. Repeal |
| 4. Proof of sex | |
- Schedule

Short title

1. This Order may be cited as the *Open Season Big Game Moose Hunting Order, Newfoundland, 2002-2003*.

Moose management
areas
Open seasons

2. The moose management areas shall be as described in the Schedule.

3. (1) The open seasons for moose hunting in the areas described in the Schedule shall be

Area No.	Hunting Season
1 to 27	Sept. 14, 2002 - Dec. 14, 2002
3A, in addition only residents of Harbour Deep who hold a valid hunting licence for this area may hunt there during	Feb. 1, 2003 - Feb. 15, 2003
28 to 36	Oct. 5, 2002 - Jan. 4, 2003
37	Sept. 14, 2002 - Dec. 14, 2002
38	Oct. 5, 2002 - Jan. 4, 2003
39 to 43	Sept. 14, 2002 - Dec. 14, 2002
44	Oct. 5, 2002 - Jan. 4, 2003
45	Sept. 14, 2002 - Dec. 14, 2002
47	Oct. 5, 2002 - Jan. 4, 2003

(2) In addition to subsection (1), hunting by bow and arrow only shall be permitted in the following areas for the periods indicated:

Area No.	Hunting by Bow and Arrow
1, 2, 3, 3A, 4, 5, 6, 7, 8, 9, 10, 11, 12, 13, 14, 15, 16, 17, 18, 19, 20, 21, 22, 22A, 23, 24, 25, 26, 27, 37, 39, 39A, 40, 41, 42, 43 and 45	Aug. 31, 2002 to Sept. 13, 2002
28, 29, 30, 31, 32, 33, 34, 35, 36, 38, 44 and 47	Sept. 21, 2002 to Oct. 4, 2002

(3) Notwithstanding subsections (1) and (2) there shall be no open season in Area 43 for moose that are predominately white in colour.

*Open Season Big Game Moose Hunting Order,
Newfoundland, 2002-2003*

74/02

- Proof of sex **4.** The holder of a big game licence to hunt, take or kill female only animals shall, upon request of a wildlife officer, produce the head of the animal.
- Bag limit
Prohibition **5.** The bag limit is one moose as specified in each licence.
- 6.** A person shall not transport or possess any firearms under the authority of a valid game licence without being in possession of an outdoor identification card, or non-resident equivalent card, issued to the person.
- Repeal **7.** The *Open Season Big Game Moose Hunting Order, Newfoundland, 2001-2002*, Newfoundland and Labrador Regulation 57/01, is repealed.

Schedule

(a) Management Area 1 - St. Anthony

All that area of the Island of Newfoundland commencing at the junction of the Northern Peninsula Highway and the Viking Trail at Eddies Cove;

Then following a straight line to the closer point to the coastline of the Straits of Belle Isle;

Then following the coastline in a generally northeasterly direction to Cape Norman;

Then following the coastline of Pistolet Bay, Ha Ha Bay to Cape Onion;

Then following the coastline of Sacred Bay around Cape Ardoise, Cobbler Point, south around Goose Cape, the northern shoreline of Hare Bay to Boiling Brook;

Then following a straight line in a generally northwesterly direction to a point on the Viking Trail opposite the access road to the St. Anthony Airport;

Then following the Viking Trail in a generally westerly direction to the point of commencement, excluding all off-shore islands except Quirpon Island.

(b) Management Area 2 - Portland Creek

All that area of the Island of Newfoundland beginning at a point lying northeast of Shallow Bay on the Gulf of St. Lawrence at the original low water mark, that point having UTM co-ordinates 444,942 metres east and 5,536,177 metres north;

Then following the coastline in a generally northeasterly direction to the mouth of Eddies Brook at Eddies Cove West;

Then following a straight line in a generally southeasterly direction to a large pond on the headwaters of Soufflets River,

named Rocky Stent, UTM co-ordinates 518,412 metres east and 5,596,488 metres north;

Then following a straight line to UTM co-ordinates 512,823 metres east and 5,594,406 metres north;

Then following a straight line to UTM co-ordinates 498,859 metres east and 5,586,620 metres north;

Then following a straight line to UTM co-ordinates 493,838 metres east and 5,580,027 metres north;

Then following a straight line to UTM co-ordinates 484,851 metres east and 5,564,824 metres north;

Then following a straight line to UTM co-ordinates 474,730 metres east and 5,562,839 metres north;

Then following a straight line to UTM co-ordinates 471,548 metres east and 5,559,765 metres north;

Then following a straight line to UTM co-ordinates 476,223 metres east and 5,550,032 metres north;

Then following a straight line to UTM co-ordinates 474,661 metres east and 5,548,530 metres north;

Then following a straight line to UTM co-ordinates 464,624 metres east and 5,531,418 metres north;

Then following a straight line to UTM co-ordinates 462,454 metres east and 5,531,331 metres north;

Then following a straight line to UTM co-ordinates 461,359 metres east and 5,530,177 metres north;

Then following a straight line to UTM co-ordinates 460,194 metres east and 5,531,447 metres north;

Then following a straight line to the point of commencement, excluding all offshore islands.

(c) Management Area 3 - Harbour Deep

All that area of the Island of Newfoundland beginning at UTM co-ordinates 466,346 metres east and 5,513,256 metres north on the Gros Morne National Park boundary;

Then following a straight line to UTM co-ordinates 461,187 metres east and 5,520,629 metres north;

Then following a straight line to UTM co-ordinates 461,359 metres east and 5,530,177 metres north;

Then following a straight line to UTM co-ordinates 462,454 metres east and 5,511,331 metres north;

Then following a straight line to UTM co-ordinates 464,624 metres east and 5,531,418 metres north;

Then following a straight line to UTM co-ordinates 474,661 metres east and 5,548,530 metres north;

Then following a straight line to UTM co-ordinates 476,233 metres east and 5,500,325 metres north;

Then following a straight line to UTM co-ordinates 471,548 metres east and 5,559,765 metres north;

Then following a straight line to UTM co-ordinates 474,730 metres east and 5,562,839 metres north;

Then following a straight line to UTM co-ordinates 484,851 metres east and 5,564,824 metres north;

Then following a straight line to UTM co-ordinates 493,838 metres east and 5,580,027 metres north;

Then following a straight line to UTM co-ordinates 498,859 metres east and 5,586,620 metres north;

Then following a straight line to UTM co-ordinates 512,823 metres east and 5,594,406 metres north;

Then following a straight line to Rocky Stent Pond on the headwaters of the Soufflets River, at UTM co-ordinates 518,412 metres east and 5,596,488 metres north;

Then following a straight line to a generally easterly direction to Williamsport at the head of Fourche Harbour;

Then following the coastline in a generally southerly direction to Great Coney;

Then following a straight line in a generally southwesterly direction to UTM co-ordinates 466,346 metres east and 5,513,256 metres north on the boundary of the Gros Morne National Park, excludes all offshore islands and excludes Area 3A.

(d) Management Area 3A - Harbour Deep

All that area of the Island of Newfoundland commencing at the western extremity of a pond on the Soufflets River where this point intersects Area 3 boundary, Harbour Deep, at co-ordinates 512,823 metres east and 5,594,406 metres north;

Then following a straight line in a generally southwesterly direction to a pond northeast of Lake Michel co-ordinates 504,900 metres east and 5,571,600 metres north;

Then following a straight line in a generally southeasterly direction to a pond on the Little Harbour Deep River co-ordinates 509,700 metres east and 5,567,600 metres north;

Then following the northern shoreline of this pond and the northern bank of the Little Harbour Deep River to a main tributary co-ordinates 519,400 metres east and 5,570,200 metres north;

Then following a straight line in a generally northeasterly direction to a pond on the Soufflets River co-ordinates 5,284,00 metres east and 5,589,000 metres north;

Then following the southern shoreline of this pond, the southern bank of the Soufflets River, and the Area 3 Boundary to the point of commencement.

(e) Management Area 4 – Taylors Brook

All the area of the Island of Newfoundland bounded by a line beginning at the point on Route 430 where this highway intersects with the Gros Morne National Park boundary;

Then following the park boundary to UTM coordinates 466,346 metres east and 5,513,256 metres north;

Then following a straight line in an easterly direction to the brook flowing into the southernmost point in Great Coney Arm;

Then following the coastline of White Bay in a generally southerly then northeasterly direction to the outflow of Little Chouse Brook in White Bay;

Then following Little Chouse Brook in a southeasterly direction to its source in Little Chouse Brook Pond;

Then following the western shoreline of this pond to its southern extremity;

Then following a straight line due south to its intersection with Main Brook at UTM coordinates 520,375 metres east and 5,486,500 metres north;

Then following this brook and waterways in a general southeastern direction to its source in Upper Indian Pond;

Then following the western shoreline of Upper Indian Pond to the outflow of a small stream exiting the said pond at its southwestern extremity;

Then following this stream to its outflow in Indian Brook;

Then following Indian Brook in a southeasterly direction to a dam at UTM coordinates 527,700 metres east and 5,468,750 metres north;

Then following a straight line in a southerly direction to the intersection of an access road and Route 1, the Trans Canada Highway, TCH, at UTM coordinates 528,000 metres east and 5,468,100 metres north;

Then following the TCH in a westerly direction to a point due south of the northeastern extremity of Birchy Lake;

Then following a straight line to said point on Birchy Lake;

Then following the southwestern shoreline of Birchy Lake and the southern and western shore of Sandy Lake to its intersection with the former Railway Bridge near Howley;

Then following the northern shoreline of Grand Lake to the western abutment of Main Dam on Junction Brook;

Then following the north bank of the Humber Canal and Spillway to Route 1;

Then following Route 1 to its intersection with Route 430;

Then following Route 430 to the point of commencement but excluding all offshore islands.

(f) Management Area 5 - Trout River

All that area of the Island of Newfoundland bounded by a line beginning at the Gros Morne National Park boundary on the Gulf of St. Lawrence near Trout River;

Then following this boundary line where it intersects with Route 430;

Then following Route 430 to its intersection with the Trans Canada Highway, TCH, in the Town of Deer Lake;

Then following the TCH to the Humber Canal Spillway Crossing;

Then following the southeast shoreline of Deer Lake and the Humber River to Humber Arm;

Then crossing the mouth of Humber River and following the Northern Shore of the Bay of Islands to the point of commencement.

(g) Management Area 6 - Corner Brook

All that area of the Island of Newfoundland bounded by a line beginning at the mouth of the Humber River in Corner Brook;

Then following a straight line to the closest point on the TCH;

Then following the TCH in a generally southerly direction to where it crosses Southwest Brook;

Then following this brook to St. George's River;

Then following the northern shoreline of St. George's River, St. George's Bay, and the coastline in a generally northerly direction to the point of commencement, but excluding the Port au Port Peninsula and excluding all offshore islands.

(h) Management Area 7 - South Brook

All that area of the Island of Newfoundland beginning at the Humber Canal Spillway Crossing;

Then following the south bank of the Humber Canal to Main Dam;

Then following the northern shore of Grand Lake, the railway bridge over Main Brook, near Howley, and the eastern shoreline of Grand Lake to its southeastern extremity;

Then following the Camp 33 Road to the TCH;

Then following the TCH, in a generally northerly direction to the mouth of Humber River;

Then following the southeastern bank of the Humber River and the southeastern shoreline of Deer Lake to the point of commencement;

And including Glover Island in Grand Lake.

(i) Management Area 8 - St. Georges

All that area of the Island of Newfoundland bounded by a line beginning at the mouth of Crabbes River;

Then following the coastline of St. George's Bay in a generally northerly direction to the mouth of the St. George's River;

Then following the north bank of St. George's River to the Trans Canada Highway, TCH;

Then following the TCH in a generally northerly direction to Camp 33 Road;

Then following Camp 33 Road to the southwestern extremity of Grand Lake;

Then following the shoreline of Grand Lake to the outlet of Little Grand Lake Brook;

Then following Little Grand Lake Brook to its source at the outlet of Little Grand Lake;

Then following a straight line to the western extremity of North Lake;

Then following a straight line to the western extremity of Dennis Pond;

Then following a straight line to the northwestern extremity of John Mary Pond;

Then following a straight line to the western extremity of Butt's Pond;

Then following a straight line to the northwest extremity of Hungry Grove Pond;

Then following the western shoreline of Hungry Grove Pond to its outlet in Crabbes River;

Then following the north bank of Crabbes River to the point of commencement.

(j) Management Area 9 - Auguille Mountains

All that area of the Island of Newfoundland bounded by a line beginning at the mouth of Crabbes River in the district of St. George's;

Then following the Crabbes River to the TCH bridge crossing that river;

Then following that highway in a generally southwesterly direction to the bridge crossing South Branch River, the South Branch of the Grand Codroy River;

Then following the northern and/or western bank of this river and the Grand Codroy River to its mouth;

Then following the coastline in a generally northerly direction to the point of commencement but excluding all offshore islands.

(k) Management Area 10 - Port aux Basques

All that area of the Island of Newfoundland bounded by a line beginning at the mouth of Grand Codroy River;

Then following the northern and/or western bank of this river to the bridge crossing South Branch River, the South Branch of the Grand Codroy River;

Then following the Trans Canada Highway in a generally northeasterly direction to the Crabbes River;

Then following the northern bank of Crabbes River in a generally southeasterly direction to the stream flowing out of Hungry Grove Pond;

Then following a straight line to the head of North Bay, La Poile Bay;

Then following the coastline in a generally westerly and then northerly direction to the point of commencement.

(l) Management Area 11 - Dashwoods

All that area of the Island of Newfoundland bounded by a line beginning at North Bay, LaPoile Bay;

Then following a straight line northwest to the point where the stream flowing out of Hungry Grove Pond enters Crabbes River;

Then following the western bank of this stream and the western shoreline of Hungry Grove Pond to its northwestern extremity;

Then following a straight line northeast to the western extremity of Butt's Pond;

Then following a straight line northeast to the northwestern extremity of John Mary Pond;

Then following a straight line to the western extremity of Dennis Pond;

Then following a straight line northwest to the western extremity of North Lake;

Then following a straight line north to the mouth of Little Grand Lake Brook;

Then following the north bank of Little Grand Lake Brook and Little Grand Lake and Lewaseechjeech Brook to its northern tributary;

Then following this tributary to its headwaters pond;

Then following a straight line south to the outlet of Lloyds Lake;

Then following the southern shore of Lloyds Lake, the south bank of Lloyds River to King George IV Lake;

Then following the western shoreline of King George IV Lake to the southernmost end of King George IV Lake;

Then following a straight line southwest to the point of commencement.

(m) Management Area 12 - Buchans

All that area of the Island of Newfoundland bounded by a line beginning at the outlet of Little Grand Lake Brook;

Then following the southeastern shore of Grand Lake to the mouth of Hinds Brook;

Then following Hinds Brook to Hinds Lake;

Then following the northern shore of Hinds Lake to the southeastern extremity of Hinds Lake;

Then following a straight line to the northwestern extremity of Buchans Lake;

Then following the western shoreline of Buchans Lake to Buchans Brook;

Then following Buchans Brook to its outlet in Red Indian Lake;

Then following the northern shoreline of Red Indian Lake in first an easterly direction and then in a southerly direction to Exploits Dam;

Then following the southern shoreline of Red Indian Lake in a generally southwesterly direction to the mouth of Lloyds River;

Then following Lloyds River to the outlet of Lloyds Lake;

Then following a straight line north to the headwaters pond of the northern tributary to Lewaseechjeech Brook;

Then following this tributary stream west to the main stream of Lewaseechjeech Brook to Little Grand Lake;

Then following the northern shoreline of Little Grand Lake and Little Grand Lake Brook west to the point of commencement and the shoreline refers to high water mark.

(n) Management Area 13 - Gaff Topsails

All that area of the Island of Newfoundland bounded by a line beginning at the mouth of Hinds Brook in Grand Lake;

Then following the northeast shoreline of Grand Lake, the main Brook and southern shoreline of Sandy Lake to Kitty's Brook;

Then following Kitty's Brook in generally easterly direction to the T' Railway at Kitty's Brook;

Then following the T' Railway east to where it crosses Barney's Brook;

Then following a straight line to the northern extremity of Little Sandy Pond;

Then following the northern and eastern shoreline of little Sandy Pond to a small stream located at the southern extremity of the that pond;

Then following this stream in a southeasterly direction to its outlet in South Brook;

Then following South Brook to a point approximately 1.6 kilometres west of the Trans Canada Highway, TCH;

Then following a straight line to the closest point on the TCH;

Then following the TCH east to the Town of Badger;

Then following the shortest straight line distance from the TCH to the south bank of the Exploits River;

Then following the south bank of the Exploits River to Exploits Dam;

Then following the shoreline of Red Indian Lake in first a generally northerly direction and then a westerly direction to the mouth of Buchans Brook;

Then following the western bank of Buchans Brook to Buchans Lake;

Then following the western shoreline of Buchans Lake to its northern extremity;

Then following a straight line to the southeast extremity of Hinds Lake;

Then following the northern shoreline of Hinds Lake and the north bank of Hinds Brook to the point of commencement.

(o) Management Area 14 - Baie Verte

All that area of the Island of Newfoundland lying generally north of a line beginning at the mouth of South Brook in Halls Bay;

Then following the north bank of this brook south to the Trans Canada Highway, TCH, Bridge;

Then following the TCH in a generally westerly direction to its junction with the old TCH roadway at UTM coordinates 528,000 metres east and 5,468,100 metres north;

Then following a straight line in a northwesterly direction to its intersection with the dam on Indian Brook at UTM coordinates 527,700 metres east and 5,468,750 metres north;

Then following Indian Brook in a northwesterly direction to the mouth of a small stream entering the brook at UTM coordinates 524,300 metres east and 5,468,950 metres north approximately 1.5 kilometres southeast of Lake Buck;

Then following this stream in a northeasterly direction to its source on Upper Indian Pond;

Then following the western shoreline of Upper Indian Pond to its western extremity and the mouth of a small stream at UTM coordinates 523,950 metres east and 5,484,000 metres north;

Then following this brook in a northwesterly direction to a point on an unnamed pond with UTM coordinates 520,375 metres east and 5,486,500 metres north;

Then following a straight line to the southern extremity of Little Chouse Brook Pond;

Then following the western shoreline of this pond to the outflow of Little Chouse Brook;

Then following this brook to its outflow in White Bay;

Then following the coastline of White Bay around the Baie Verte Peninsula to Green Bay and following the coastline of Green Bay and Notre Dame Bay to the point of commencement. All offshore islands excluded.

(p) Management Area 15 - Twin Lakes

All that area of the island of Newfoundland bounded by a line beginning at the mouth of South Brook in Halls Bay;

Then following the coastline of Notre Dame Bay in a generally easterly direction to the mouth of the Exploits River in the Bay of Exploits;

Then following the south bank of the Exploits River in a generally westerly direction to Badger;

Then following the Trans Canada Highway in a generally northerly direction to the point where it crosses South Brook at Halls Bay;

Then following the western bank of South Brook to the point of commencement. Excluding all offshore islands, except

Pilley's Island, Triton Island, Long Island and Sunday Cove Island.

(q) Management Area 16 - Sandy Badger

All that area of the Island of Newfoundland bounded by a line beginning at the mouth of Noel Paul's Brook in the Exploits River;

Then following the south bank of the Exploits River in an easterly direction to the mouth of Great Rattling Brook;

Then following the west bank of Great Rattling Brook to its first tributary;

Then following a straight line to the eastern extremity of Island Pond, 4.8 kilometres southeast of Grand Falls;

Then following a straight line in a southwesterly direction to the eastern extremity of Pistol Lake;

Then following a straight line in a southeasterly direction to the pond on the headwaters of the South Great Rattling Brook;

Then following a straight line west to the northern extremity of Gulp Pond;

Then following a straight line westerly to the northern extremity of Island Pond, west of Crooked Lake;

Then following a straight line northeasterly to the outlet of Noel Paul's Steady;

Then following Noel Paul's Brook to the point of commencement.

(r) Management Area 17 - Millertown

All the area of the Island of Newfoundland beginning at the northeast extremity of Lloyds Lake;

Then following the eastern bank of Lloyds River to Red Indian Lake;

Then following the eastern shoreline of Red Indian Lake to Exploits Dam;

Then following the south bank of the Exploits River to the mouth of Noel Paul's Brook;

Then following the western bank of Noel Paul's Brook to the outlet of Noel Paul's Steady;

Then following a straight line in a southwesterly direction to the northern extremity of Island Pond;

Then following the eastern shoreline of Island Pond to its southern extremity;

Then following a straight line in a generally western direction to the southern extremity of Blizzard Pond;

Then following a straight line in a northwesterly direction to the point of commencement and the shoreline refers to high water mark.

(s) Management Area 18 - Granite Lake

All that area of the Island of Newfoundland bounded by a line beginning at the northeastern extremity of Lloyds Lake;

Then following a straight line to the southern extremity of Blizzard Pond;

Then following a straight line to the southern extremity of Island Pond;

Then following a straight line to the southern extremity of Cold Spring Pond;

Then following a straight line to the southern extremity of Wolf Lake;

Then following a straight line to the northern extremity of Top Pond;

Then following a straight line to the southern extremity of Buck Lake;

Then following a straight line to the closest point of the Burgeo Highway;

Then following the Burgeo Highway in a northerly direction to the bridge crossing Lloyds River;

Then following Lloyds River and the southern shoreline of Lloyds Lake to the point of commencement.

(t) Management Area 19 - Grey River West

All that area of the Island of Newfoundland commencing at North Bay;

Then following a straight line in a generally northeasterly direction to the southern extremity of King George IV Lake;

Then following the east shoreline of King George IV Lake to Lloyds River;

Then following Lloyds River to where it crosses the Burgeo Highway;

Then following the Burgeo Highway in a southerly direction to the closest point of Buck Lake;

Then following a straight line in an easterly direction to the southwestern extremity of Buck Lake;

Then following a straight line to the northwestern extremity of Top Pond;

Then following a straight line in a generally eastern direction for a distance of 16 kilometres to the western bank of White Bear River;

Then following the western bank of White Bear River in a southerly direction to White Bear Bay;

Then following the coast line in a generally westerly direction to the point of commencement but excluding all off-shore islands.

(u) Management Area 20 - Round Pond

All that area of the Island of Newfoundland beginning at the mouth of d'Espoir Brook in North Bay, Bay d'Espoir;

Then following a straight line to the southern extremity of Cold Spring Pond;

Then following a straight line to the southeastern extremity of Island Pond, west of Crooked Lake;

Then following the eastern shoreline of Island Pond to its northern extremity;

Then following a straight line in an easterly direction to the northern extremity of Gulp Pond;

Then following a straight line in an easterly direction to the pond on the headwaters of South Great Rattling Brook;

Then following a straight line in a southeasterly direction to the Northwest Gander River at the point where the river which runs out of Coy Pond enters it;

Then following the Northwest Gander River in a southwesterly direction to the point where Stormy Brook enters into it;

Then following this brook to a small pond at its headwaters;

Then following a straight line to the southwestern extremity of Matthew's Pond;

Then following a straight line to the southeastern arm of Long Pond Reservoir, the dam;

Then following the southeastern shoreline of Long Pond Reservoir to its southern extremity;

Then following Salmon River to its mouth in East Bay, Bay D'Espoir;

Then following the coast line to the point of commencement, but excluding all offshore islands.

(v) Management Area 21 - Rattling Brook

All that area of the Island of Newfoundland bounded by a line beginning at the eastern extremity of Island Pond;

Then following a straight line in a northeasterly direction to the first western tributary of Great Rattling Brook;

Then following the west bank of Great Rattling Brook to its mouth in the Exploits River;

Then following the southern bank of the Exploits River and Bay of Exploits to the mouth of Rattling Brook;

Then following Rattling Brook to its outlet from Rattling Lake;

Then following the southern shoreline of Rattling Lake to the stream flowing from Upper Christmas Pond;

Then following this stream to Upper Christmas Pond and the southern shoreline of the pond to the main channel of the stream flowing from Lewis Lake;

Then following this channel to its source at Lewis Lake, and the southern shoreline of Lewis Lake to a stream entering said Lake from Little Dowd Pond;

Then following this stream to Little Dowd Pond;

Then following the shoreline of Little Dowd Pond to the mouth of the stream entering from Dowd Pond;

Then following this stream and the shoreline of Dowd Pond to the mouth of a brook entering Dowd Pond at its southeastern extremity;

Then following a straight line to the mouth of Great Gull River on the Northwest Gander River;

Then following the south bank of the Northwest Gander River to the mouth of a river which runs out of Coy Pond;

Then following a straight line in a westerly direction to a small pond on the headwaters of South Great Rattling Brook;

Then following a straight line in a northwesterly direction to the eastern extremity of Pistol Lake;

Then following a straight line to the point of commencement.

(w) Management Area 22 – Lewisporte

All that area of the Island of Newfoundland bounded by a line beginning at the eastern abutment of the Trans Canada Highway, TCH, Bridge crossing Rattling Brook;

Then following the eastern bank of Rattling Brook to the Bay of Exploits;

Then following the eastern shoreline of the Bay of Exploits and Gander Bay to the mouth of Gander River, to the T-Railway bridge crossing the Gander River near Glenwood;

Then following the main line of the railway for approximately 1.6 kilometres west to the intersection with the transmission line;

Then following the transmission line in a generally westerly direction to its intersection with the brook flowing from Little Dowd Pond;

Then following this brook to Lewis Lake and the southern shoreline of this Lake to the outlet of a stream flowing to Upper Christmas Pond;

Then following this stream and the shoreline of Upper Christmas Pond to the mouth of a stream exiting this pond into Rattling Lake;

Then following the southern shoreline of this Lake to the outflow of Rattling Brook from Rattling Lake;

Then following Rattling Brook to the point of commencement, but excluding all offshore islands except Thwart, Chapel, New World, Upper Black, Farmers, Coal All, Dunnage, Birchy, and Sivier Islands, which are included in this management area. Excluding Area 22A.

(x) Management Area 22A - Lewisporte

All that area of the Island of Newfoundland bounded by a line beginning at the eastern abutment of the Trans Canada Highway, TCH, Bridge crossing Rattling Brook;

Then following the eastern bank of Rattling Brook to the bridge on Route 351;

Then following Route 351 in an easterly direction past Norris Arm to its intersection with the TCH;

Then following the TCH to the bridge crossing Gander River;

Then following the west bank of the Gander River to the railway bridge crossing the Gander River near Glenwood;

Then following the T-Railway for approximately 1.5 kilometres to the intersection with the transmission line;

Then following the transmission line in a generally westerly direction to its intersection with the brook flowing from Little Dowd Lake;

Then following this brook to Lewis Lake and the southern shoreline of this Lake to the outlet of a stream flowing to Upper Christmas Pond;

Then following this stream and the shoreline of Upper Christmas Pond to the mouth of a stream exiting this pond into Rattling Lake;

Then following the southern shoreline of this Lake to the outflow of Rattling Brook from Rattling Lake;

Then following Rattling Brook to the point of commencement.

(y) Management Area 23 - Bonavista North

All that area of the Island of Newfoundland bounded by a line beginning at the mouth of Gambo Brook in Freshwater Bay, Bonavista Bay;

Then following the western bank of the Gambo Brook to the Trans Canada Highway, TCH;

Then following the TCH in a generally westerly direction to the eastern end of Gander Lake;

Then following a straight line to the closest point of Gander Lake;

Then following a line equidistant from the northern and southern shorelines of Gander Lake to the point having co-ordinates 48° 55' north and 54° 55' west;

Then turning in a generally northerly direction to follow a line equidistant from the eastern and western shorelines of Gander Lake and the eastern and western banks of the Gander River to the centre of the T'Railway bridge crossing the Gander River;

Then following the Railway to the eastern bank of the Gander River;

Then following the eastern bank of the Gander River to its mouth in Gander Bay;

Then following the eastern coastline of Gander Bay, the coastline of Hamilton Sound and the coastline of Notre Dame Bay in a generally easterly direction to Cape Freels;

Then following the coastline of Bonavista Bay in a generally southerly direction to the point of commencement but excluding all offshore islands.

Note To Hunters

Hunting is prohibited on the Gander International Airport property as described below:

Gander International Airport Property

All that parcel of land starting on the north shore of Gander Lake at a point, UTM coordinates 675,566 metres east and 5,422,746 metres north, due south of the intersection of Cooper Boulevard with the TCH;

Then continuing east on the shoreline of Gander Lake to the Town of Gander boundary;

Then following the boundary in a generally northerly direction to its intersection with the TCH;

Then continuing west on the TCH to a point closest to the southeastern corner of the airport security fence;

Then following the fence in a generally northerly direction to its intersection with Circular Road, next to Hangar 21;

Then continuing west on Circular Road to the intersection of the Boot Pond Road;

Then from the Boot Pond Road, continuing west on the T'Railway, to the eastern boundary of the Gander Industrial Park;

Then running in a generally northwesterly direction along the eastern boundary of the adjoining properties of the Industrial Park, the Town of Gander Cemetery and the Department of National Defence housing site, around to Cooper Boulevard;

Then south on Cooper Boulevard to its intersection with the TCH;

Then due south of the intersection to the point of commencement.

(z) Management Area 24 - Northwest Gander

All that area of the Island of Newfoundland bounded by a line beginning at the mouth of a small stream entering Dowd Pond at its southeastern extremity;

Then following the shoreline of this lake to the outlet of a stream exiting Dowd Pond into Little Dowd Pond;

Then following this stream to Little Dowd Pond and the shoreline of said lake to a stream outlet at its northwestern extremity;

Then following this stream to its intersection with the Newfoundland and Labrador Hydro Transmission line;

Then following the transmission line in a generally easterly direction to its intersection with the T'Railway approximately 1.6 kilometres west of Glenwood;

Then following the T'Railway to the center of the T'Railway bridge crossing the Gander River at Glenwood;

Then following a line equidistant from the eastern and western banks of the Gander River and the eastern and western shoreline of Gander Lake to the point having coordinates 48° 55' north and 54° 55' west;

Then following a straight line to the eastern bank of the mouth of the Southwest Gander River;

Then following the eastern bank of the Southwest Gander River to the mouth of Dennis Brook;

Then following a straight line to the mouth of Gull River in the Northwest Gander River;

Then following a straight line to the point of commencement.

(aa) Management Area 25 - Bay D'Espoir

All that area of the Island of Newfoundland bounded by a line beginning at the mouth of Salmon River, East Bay, Bay D'Espoir;

Then following this river in a northerly direction to the southern extremity of Long Pond Reservoir;

Then following the southeastern shoreline of Long Pond Reservoir to its southeastern arm of Long Pond Reservoir, Dam;

Then following a straight line northeast to the southwestern extremity of Matthew's Pond;

Then following a straight line north to the headwaters of a pond on Stormy Brook;

Then following this brook to its outlet in Northwest Gander River;

Then following the south bank of the Northwest Gander River to Great Gull River;

Then following Great Gull River to the northern extremity of Great Gull Lake;

Then following the eastern shoreline of Great Gull Lake to its southern extremity;

Then following a straight line south to a point on the western bank of the Bay du Nord River approximately 5.5 kilometres

north of Anmalijek Lake to the point where the second tributary enters this river from the east;

Then following the western bank of the Bay du Nord River to Anmalijek Lake;

Then following the western shoreline of Anmalijek Lake to its southwestern extremity;

Then following a straight line southwest to the northeastern extremity of Train Hill Pond;

Then following a straight line southeast to Smokey Falls on the Bay du Nord River;

Then following the western bank of the Bay du Nord River to its mouth in Belle Bay, Fortune Bay;

Then following the coastline of Belle Bay, Great Bay, Connaigre Bay, Hermitage Bay and Bay D'Espoir to the point of commencement but excluding all offshore islands except Long Island, Bois Island and Chapel Island.

(bb) Management Area 26 - Jubilee Lake

All that area of the Island of Newfoundland bounded by a line beginning at the west bank of the mouth of the Bay du Nord River in Belle Bay, Fortune Bay;

Then following the west bank of the Bay du Nord River to Smokey Falls;

Then following a straight line to northeastern extremity of Train Hill Pond;

Then following a straight line to the southwestern extremity of Anmalijek Lake;

Then following the western shoreline of Anmalijek Lake to the point where the Bay du Nord River enters it;

Then following the western bank of the Bay du Nord River to the point where its second tributary enters from the east, approximately 5.5 kilometres north of Anmalijek Lake;

Then following a straight line north to the southern extremity of Great Gull Lake;

Then following a straight line southeast to Mt. Sylvester;

Then following a straight line east to the northwestern extremity of Norseman's Pond;

Then following a straight line east to the northeastern extremity of Norseman's Pond;

Then following a straight line in southerly direction to a high point of land, elevation 852 metres, east of Norseman's Pond with UTM coordinates 692,075 metres east and 5,337,650 metres north;

Then following a straight line west to the southeastern extremity of Norseman's Pond;

Then following a straight line southwest to Friar Head, Fortune Bay;

Then following the coastline in a generally westerly direction the coastline of Fortune Bay to the point of commencement, but excluding all offshore islands except Rencontre Island.

(cc) Management Area 27 - Terra Nova

All that area of the Island of Newfoundland bounded by a line beginning at the mouth of Great Gull River on the Northwest Gander River;

Then following a straight line east to the mouth of Dennis Brook on the Southwest Gander River;

Then following a straight line east to the western extremity of the pond at the headwaters of Riverhead Brook;

Then following the northern shoreline of this pond to its outlet;

Then following the north bank of Riverhead Brook to its mouth in Gambo Pond;

Then following the southern shoreline of Gambo Pond to the second tributary of Parsons Pond Brook where it enters Gambo Pond;

Then following the west bank of Parsons Pond Brook to its outlet from Parsons Pond;

Then following a straight line east to the western extremity of Maccles Lake;

Then following the southern shoreline of Maccles Lake to the mouth of a small stream flowing into the eastern end of that lake at Miller's Angle at an approximate location of 48° 36' 36" north latitude and 54° 7' 30" west longitude;

Then following that stream to its intersection with the T'Railway;

Then following the T'Railway in a generally southerly direction to its intersection with Salmon River;

Then following upstream the west bank of the Salmon River to Salmon Pond;

Then following the western shoreline in Salmon Pond to the stream outlet at its southwestern extremity;

Then following this tributary upstream in a generally southwesterly direction to the most northwesterly point of a small pond located at 48° 19' 7" north latitude and 54° 22' 30" west longitude;

Then following that stream to Saddle Pond;

Then following the southern shoreline of Saddle Pond to its eastern extremity;

Then following in a straight line in a generally southwesterly direction to the western extremity of Norseman's Pond;

Then following a straight line to Mount Sylvester;

Then following a straight line to the southern extremity Great Gull Lake;

Then following the eastern shoreline of Great Gull Lake to its outlet in Great Gull River;

Then following Great Gull River to the point of commencement.

(dd) Management Area 28 - Black River

All that area of the Island of Newfoundland bounded by a line beginning at Friar Head in Fortune Bay;

Then following a straight line to the southeastern end of Norseman's Pond;

Then following a straight line in a northeasterly direction to a point of land, elevation 852 metres, east of Norseman's Pond with UTM coordinates 692,075 metres east and 5,337,650 metres north;

Then following a straight line in a northerly direction to the northeastern extremity of Norseman's Pond;

Then following a straight line to the western extremity of Norseman's Pond;

Then following a straight line in a generally northeasterly direction to the eastern extremity of Saddle Pond;

Then following the southern shoreline of Saddle Pond to the stream at its northern extremity;

Then following this stream in a generally northeasterly direction to the most northwesterly point of a small pond located at 48° 19' 7" north latitude and 54° 22' 30" west longitude;

Then following in a generally northeasterly direction a stream flowing from the outlet of Salmon Pond at the southwestern extremity of that pond;

Then following the west bank of Salmon Pond and Salmon River in a generally northeasterly direction to its intersection with the T^rRailway;

Then following the T^rRailway in a generally northerly direction to a small stream flowing into the eastern end of Maccles Lake at Miller's Angle at an approximate location of 48° 36' 40" north latitude and 54° 07' 18" west longitude;

Then following downstream the eastern bank of that stream to Maccles Lake;

Then following the southern shoreline of Maccles Lake in a generally westerly direction to the western extremity of that lake;

Then following a straight line to the outlet of Parsons Pond;

Then following the eastern bank of this brook to its mouth in Gambo Pond;

Then following the southern shoreline of Gambo Pond and the south bank of Gambo River to its mouth in Freshwater Bay, Bonavista Bay;

Then following the coastline of Bonavista Bay and the boundary of Terra Nova National Park to the mouth of Southwest River, Port Blandford;

Then following the western bank of the Southwest River to the TCH;

Then following the TCH in a generally southerly direction to its intersection with the road to Come-by-Chance;

Then following the coastline of Placentia Bay to the mouth of Piper's Hole River;

Then following the western bank of Piper's Hole River to the Burin Peninsula Highway, Route 210;

Then following this highway and Route 211 to Terrenceville;

Then following the coastline of Fortune Bay to the point of commencement, but excluding all offshore islands and excluding all parts of Terra Nova National Park.

(ee) Management Area 29 - Bonavista Peninsula

All that area of the Island of Newfoundland bounded by a line beginning at the TCH Bridge crossing Southwest River, Port Blandford;

Then following the western bank of Southwest River to its mouth in Clode Sound;

Then following the shoreline of Bonavista Bay and Trinity Bay to the community of Sunnyside;

Then following the road leading from Sunnyside to the TCH;

Then following the TCH to the point of commencement excluding Random Island, Area 47, and all other offshore islands.

(ff) Management Area 30 - Burin Peninsula Knee

All that area of the Island of Newfoundland bounded by a line beginning at the western abutment of the bridge on Route 210 crossing Piper's Hole River;

Then following the western bank of Piper's Hole River to the coastline;

Then following the coastline of Placentia Bay in a generally southwesterly direction to Mortier Bay;

Then following the coastline of Mortier Bay and Southwest Arm in a generally westerly direction to the point where Route 210 crosses Southwest Arm;

Then following Route 210 in a generally northwesterly direction to its intersection with Route 213;

Then following Route 213 in a generally northwesterly direction to Garnish;

Then following the shortest straight line distance of the coastline to Fortune Bay;

Then following the coastline of Fortune Bay in a generally northeasterly direction to Terrenceville;

Then following Routes 211 and 210 to the point of commencement but excluding all offshore islands, except Sound Island, Woody Island and Bar Haven Island.

(gg) Management Area 31 - Placentia

All that area of the Island of Newfoundland beginning at Long Harbour;

Then following the Long Harbour Road, Route 202, at its closest point to Long Harbour to its intersection with the TCH;

Then following the Chapel Arm Highway to Chapel Arm;

Then following the coastline of Chapel Arm, Spread Eagle Bay, Dildo Bay, to Dildo South;

Then following the Highway, Route 80, in a generally southerly direction to Whitbourne;

Then following the Markland Road, Route 81, to its intersection with the Argentia Road, Route 91;

Then following the Argentia Road in a generally westerly direction to Southeast Arm, Placentia;

Then following the shoreline of Southeast Arm and Placentia Bay in a generally northerly direction to the point of commencement but excluding all offshore islands and the Argentia Military Reservation described as follows:

Argentia Military Reservation

All that area of the Avalon Peninsula beginning at a point on the south shoreline of Placentia Sound, near its easterly extremity, that point being a bronze disc set in concrete marked "Boundary Line - U.S. Military Reservation" and designated here as point A-I at approximately 47° 52' 19" north latitude and 53° 52' 18" west longitude, that point being the principal point of beginning;

Then south 31° 06' 57.27" east 661.76 metres;

Then south 18° 32' 54.72" east 442.26 metres to the north line of the right-of-way of the Old Newfoundland Railway;

Then following the north line of the right-of-way of the Old Newfoundland Railway southerly and westerly to a point which is south 63° 19' 28.74" west 6,747.72 metres from the last described point;

Then south 63° 33' 52.11" west 342.18 metres;

Then south 85° 41' 28.72" west 2572.66 metres;

Then south 66° 03' 03.92" west 569.35 metres to the southeast corner of Lot No. 86 in the Freshwater development as shown on plan titled "FRESHWATER SETTLEMENT-PLACENTIA" dated December 1941 by the Department of Public Works - Roads Division, Newfoundland Government;

Then along the south line of Lot No. 86, south 48° 55' 40.71" west 121.92 metres to the southwest corner of Lot No. 86 and the east line of a road right-of-way in the Freshwater development;

Then along the east line of the road right-of-way north 41° 04' 19.29" west 55.58 metres north 25° 04' 19.29" west

272.36 metres to the northwest corner of Lot No. 107 in the Freshwater development;

Then along the north line of the Lot No. 107 north $64^{\circ} 55' 40.71''$ east 121.92 metres to the northeast corner of the Lot No. 107;

Then north $25^{\circ} 04' 19.29''$ west 494.16 metres;

Then south $80^{\circ} 52' 24.78''$ west 825.79 metres to a bronze disc set in concrete and marked "Moll" - U.S. Navy Hydrographic Office";

Then south $80^{\circ} 52' 24.78''$ west 44.20 metres more or less to the shoreline of Placentia Bay;

Then northerly following the sinuosities of the shoreline of Placentia Bay, around the entire Argentia Peninsula and the south shore of Argentia Harbour and Placentia Sound to the principal point of beginning, all bearings are true.

(hh) Management Area 32 - Cape Shore

All that area of the Island of Newfoundland beginning at Southeast Arm, Placentia Bay;

Then following the Argentia Highway, Route 91, in a generally easterly direction to Colinet;

Then following the western shoreline of Colinet Harbour, North Harbour, the western shoreline of St. Mary's Bay and the eastern shoreline of Placentia Bay, to the point of commencement but excluding all offshore islands.

(ii) Management Area 33 - Salmonier

All that area of the Island of Newfoundland beginning at Colinet;

Then following the Markland Highway, Route 81, in a generally northerly direction to Whitbourne;

Then following the Whitbourne Highway to where it intersects with the TCH;

Then following the TCH in a generally easterly direction to where it intersects with the Salmonier line;

Then following the Salmonier Line, Route 90, in a generally southwesterly direction to Salmonier Arm;

Then following the coastline to the point of commencement but excluding all offshore islands.

(jj) Management Area 34 - Bay de Verde

All that area of the Island of Newfoundland beginning at Dildo South;

Then following the eastern shoreline of Trinity Bay, the western shoreline of Conception Bay to North Arm, Holyrood;

Then following the North Arm River to where it intersects with the Salmonier Line, Route 90;

Then following Salmonier Line in a southwesterly direction to where it intersects with the TCH;

Then following the TCH in a generally westerly direction to where it intersects with Route 80 leading to Dildo South;

Then following this road, Route 80, to the point of commencement but excluding all offshore islands.

(kk) Management Area 35 - St. John's

All that area of the Island of Newfoundland beginning at North Arm, Holyrood, mouth of North Arm River;

Then following the eastern shoreline of Conception Bay to Cape St. Francis;

Then following the shoreline of Pouch Cove, Torbay, Logy Bay, St. John's Bay, Motion Bay and the southern shore of

the Avalon Peninsula to the mouth of Pierre's Brook in Witless Bay;

Then following the north bank of Pierre's Brook to Route 10;

Then following Route 10 to its intersection with Route 13;

Then following Route 13 to where it intersects the Trans Canada Highway, TCH;

Then following the TCH in a generally westerly direction to where it intersects with the Salmonier Line, Route 90;

Then following the Salmonier Line, Route 90, in a generally northeasterly direction to where the North Arm River crosses the Salmonier Line;

Then following the North Arm River to the point of commencement but excluding all offshore islands.

(II) Management Area 36 - Southern Shore

All that area of the Island of Newfoundland bounded by a line beginning at Salmonier Arm;

Then following the Salmonier Line, Route 90 in a generally northeasterly direction to where it intersects with the TCH;

Then following the TCH in a generally easterly direction to its intersection with Route 13, the Witless Bay Line;

Then following Route 13 to its intersection with Route 10;

Then following Route 10 in a southerly direction to the north bank of Pierre's Brook;

Then following the north bank of Pierre's Brook to its mouth in Witless Bay;

Then crossing the mouth of Pierre's Brook and following the coastline of Witless Bay in a southerly direction to Trepassey Bay;

Then following the coastline of Trepassey Bay and St. Mary's Bay to the point of commencement but excluding all offshore islands.

(mm) Management Area 37 - Grey River East

All that area of the Island of Newfoundland beginning at the mouth of White Bear River in White Bear Bay;

Then following this river in a northerly direction to the boundary line of Area 18, Granite Lake, where it intersects that river;

Then following a straight line in an easterly direction to the southern extremity of Wolf Lake;

Then following a straight line in a generally northeasterly direction to the southern extremity of Cold Spring Pond;

Then following a straight line to the mouth of D'Espoir Brook in North Bay, Bay D'Espoir;

Then following the coastline in a generally westerly direction to the point of commencement, but excluding all offshore islands.

(nn) Management Area 38 - Burin Peninsula Foot

All that area of the Island of Newfoundland bounded by a line beginning at the intersection of Routes 210 and 213, between Garnish and Marystown;

Then following Route 210 to the point where it crosses Southwest Arm;

Then following the coastline of Southwest Arm, Mortier Bay, Placentia Bay and Fortune Bay to Garnish;

Then following the shortest straight line distance to Route 213;

Then following Route 213 to the point of commencement but excluding all offshore islands.

(oo) Management Area 39 - Cloud River

All that area of the Island of Newfoundland beginning at Torrent Cove in Canada Bay;

Then following a straight line in a generally northwesterly direction to the eastern extremity of East Caster Pond;

Then following a straight line in a southwesterly direction to the eastern end of Leg Pond;

Then following the eastern shore of the brook flowing into Leg Pond from the south to its headwaters Pond;

Then following a straight line in a southerly direction to Rocky Stent Pond on the headwaters of the Soufflets River, at UTM co-ordinates 518,412 metres east and 5,596,488 metres north;

Then following a straight line to Williamsport at the head of Fourche Harbour;

Then following the coastline in a generally northerly direction to the point of commencement, excluding all offshore islands and excluding Area 39A.

(pp) Management Area 39A - Cloud River

All that area of the Island of Newfoundland commencing at a point on Cloud River UTM co-ordinates 5,627,100 metres north and 5,502,000 metres east;

Then following a straight line to Torrent Cove, Canada Bay;

Then following the coastline of Canada Bay the coastline of the Northern Peninsula in a southerly direction to Williamsport at the head of Fourche Harbour;

Then following a straight line in a northerly direction to a point on Cloud River UTM co-ordinates 5,626,500 metres north and 537,100 metres east;

Then following Cloud River in a generally easterly direction to the point of commencement.

(qq) Management Area 40 - Conche

All that area of the Island of Newfoundland beginning at Cape Daumalen in Canada Bay;

Then following the shoreline in a northeasterly direction to the mouth of West Brook in Hare Bay;

Then following a straight line to its intersection with Belvie Brook at UTM coordinates 553,500 metres east and 5,670,050 metres north;

Then following Belvie Brook in a generally westerly direction to a tributary at UTM coordinates 550,500 metres east and 5,670,500 metres north;

Then following this tributary to its mouth at an unnamed lake, UTM coordinates 549,000 metres east and 5,669,400 metres north;

Then following the eastern shoreline of this lake to the mouth of a small stream entering the lake at its southeastern extremity;

Then following this stream to its headwaters pond;

Then following a straight line due south to its intersection with the first forest access road;

Then following this forest access road in a westerly, then a southerly direction, to an intersection at UTM coordinates 546,650 metres east and 5,665,350 metres north;

Then following this road in a westerly direction to an intersection east of Muskrat Pond with UTM coordinates 536,380 metres east and 5,662,180 metres north;

Then following the north branch of this road to its intersection with a small stream flowing into Muskrat Pond;

Then following the south shore of this stream to Muskrat Pond and the south bank of this pond to its outflow brook;

Then following this brook to its mouth in Round Lake;

Then following the southern and western shorelines of Round Lake to the narrows where it enters Ten Mile Lake;

Then following the shoreline of Ten Mile Lake in a south-westerly direction to the mouth of Rose's Feeder;

Then proceeding up Rose's Feeder to Feeder Pond;

Then following the eastern shoreline of Feeder Pond to its southern end;

Then following a straight line to the northern end of Castor Tilt Pond and proceeding along the eastern shore of the pond to its southern end to where East Castor Brook empties into the pond;

Then proceeding up East Castor Brook to where it flows out of East Castor Pond;

Then following the eastern shoreline of East Castor Pond to the eastern extremity of the pond;

Then following a straight line in a generally southeasterly direction to Torrent Cove;

Then following the shoreline of Chimney Bay to the point of commencement but excluding all offshore islands.

(rr) Management Area 41 - Sheffield Lake

All that area of the Island of Newfoundland bounded by a line beginning at the mouth of Kitty's Brook in Sandy Lake;

Then following the shoreline of Sandy Lake, and Birchy Lake to the eastern extremity of Birchy Lake;

Then following a straight line to the closest point on the TCH;

Then following the TCH in a generally easterly and then southerly direction to a point opposite the confluence of South Brook and the stream draining Gull Pond, this point being approximately 16 kilometres south of the junction of the TCH and Route 380;

Then following the shortest straight line distance to that confluence;

Then crossing South Brook in a straight line;

Then following the western bank of South Brook to the tributary stream flowing from Little Sandy Pond;

Then following the northern bank of this stream to the outlet of Little Sandy Pond;

Then following the eastern and northern shoreline of Little Sandy Pond to its northwestern extremity;

Then following a straight line in a generally westerly direction to where Barneys Brook crosses the T'Railway;

Then following the T'Railway to its intersection with Kitty's Brook;

Then following Kitty's Brook to the point of commencement.

(ss) Management Area 42 - Gambo

All that area of the Island of Newfoundland bounded by a line commencing at the mouth of Dennis Brook on the Southwest Gander River;

Then following the south bank of the Southwest Gander River to its mouth in Gander Lake;

Then following a straight line to the point having coordinates 48° 55' north and 54° 55' west;

Then following a line that is equidistant from the northern and southern shore lines of Gander Lake in a generally easterly direction to the eastern extremity of Gander Lake;

Then following in a straight line to the closest point of the TCH;

Then following the TCH to the bridge crossing Gambo Brook;

Then following the west bank of Gambo Brook, the southern shoreline of Gambo Pond and the north bank of Riverhead Brook to the pond near its headwaters;

Then following the north shore line of this pond to its western extremity;

Then following a straight line to Dennis Brook and the point of commencement.

(tt) Management Area 43 - Port au Port

All that area of the Island of Newfoundland known as the Port au Port Peninsula but excluding all offshore islands.

(uu) Management Area 44 - Bellevue

All that area of the Island of Newfoundland bounded by a line beginning at the high water mark at the head of Come By Chance Bay;

Then following the coastline in a southerly direction to the nearest point opposite Mount Arlington Heights Road east of Long Harbour;

Then following the shortest route to that road;

Then following that road to its intersection with the Long Harbour Road;

Then following the Long Harbour Road in northeasterly direction to its intersection with the Trans Canada Highway, TCH;

Then crossing the TCH to Chapel Arm Road;

Then following Chapel Arm Road to its intersection with a gravel road at the southwest end of Chapel Arm;

Then following the high water mark along the coastline to the head of Bull Arm;

Then following a straight line to the Sunnyside Road;

Then following this road in a southwesterly direction to its intersection with the TCH;

Then following the Come By Chance Road to a point opposite the head of Come By Chance Bay;

Then following a straight line to the point of commencement but excluding all offshore islands.

(vv) Management Area 45 - Ten Mile Brook

All that area of the Island of Newfoundland beginning at the community of Eddies Cove West;

Then following the coastline in a generally northerly direction to the closest point near the junction of the Northern Peninsula Highway and the Viking Trail;

Then following the Viking Trail in a generally easterly direction to a point on the Viking Trail opposite the Access Road to St. Anthony Airport;

Then following a straight line in a generally southeasterly direction to the mouth of Broiling Brook in Hare Bay;

Then following the coastline of Hare Bay in a southerly direction to the mouth of West Brook;

Then following a straight line to its intersection with Belvie Brook at UTM coordinates 553,500 metres east and 5,670,050 metres north;

Then following Belvie Brook in a generally westerly direction to a tributary at UTM coordinates 550,500 metres east and 5,670,500 metres north;

Then following this tributary to its mouth at an unnamed lake, UTM coordinates 549,000 metres east and 5,669,400 metres north;

Then following the eastern shoreline of this lake to the mouth of a small stream entering the lake at its southeastern extremity;

Then following this stream to its headwaters pond;

Then following a straight line due south to its intersection with the first forest access road;

Then following this forest access road in a westerly, then a southerly direction, to an intersection at UTM coordinates 546,650 metres east and 5,665,350 metres north;

Then following this road in a westerly direction to an intersection east of Muskrat Pond with UTM coordinates 536,380 metres east and 5,662,180 metres north;

Then following the north branch of this road to its intersection with a small stream flowing into Muskrat Pond;

Then following the south shore of this stream to Muskrat Pond and the south bank of this pond to its outflow brook;

Then following this brook to its mouth in Round Lake;

Then following the southern and western shore of Round Lake to the narrows where it enters Ten Mile Lake;

Then following the shoreline of Ten Mile Lake in a south-westerly direction to the mouth of Rose's Feeder;

Then proceeding up Rose's Feeder to Feeder Pond;

Then following the eastern shore of Feeder Pond to its southern end;

Then following a straight line to the northern end of Castor Tilt Pond and proceeding along the eastern shore of the pond to its southern end to where East Castor Brook empties into the pond;

Then proceeding up East Castor Brook to where it flows out of East Castor Pond;

Then following the eastern shoreline of said pond;

Then following a straight line in a southwesterly direction to the brook flowing into Leg Pond;

Then following the eastern shore of the brook flowing into Leg Pond from the south to its headwaters pond;

Then following a straight line in a southerly direction to Rocky Stent Pond at the headwaters of Soufflets River, at UTM coordinates 537,100 metres east and 5,626,500 metres north;

Then following a straight line in a generally westerly direction to the point of commencement, but excluding all offshore islands.

(ww) Management Area 47 - Random Island

All that area of the Island of Newfoundland in Trinity Bay known as Random Island excluding all offshore islands.

57/01 Sch

©Earl G. Tucker, Queen's Printer



**NEWFOUNDLAND AND LABRADOR
REGULATION 75/02**

Open Season Small Game Hunting and Snaring Order, 2002-2003
under the
Wild Life Regulations
and the
Wild Life Act

(Filed October 9, 2002)

Under the authority of sections 73, 80, 92 and 114 of the *Wild Life Regulations* and the *Wild Life Act*, I make the following Order.

Dated at St. John's, October 4, 2002.

Julie Bettney
Minister of Tourism, Culture and Recreation

ORDER

Analysis

- | | |
|--------------------------------------|--|
| 1. Short title | 5. Hunting, shooting, and snaring prohibited |
| 2. Areas defined | 6. Bag limits |
| 3. Open season, hunting and shooting | 7. Small game licence |
| 4. Open season, snaring | 8. Field possession limit |
| | 9. Prohibition |

*Open Season Small Game Hunting and
Snaring Order, 2002-2003*

75/02

10. Modified snaring require-
ments

11. Repeal
Schedule

Short title

1. This Order may be cited as the *Open Season Small Game Hunting and Snaring Order, 2002-2003*.

Areas defined

2. For the purpose of the various small game hunting, shooting, and snaring seasons the applicable areas are defined in the Schedule.

Open season,
hunting and shoot-
ing

3. The open seasons for hunting, shooting, small game shall be

(a) for arctic hare

(i) no open season throughout the province excluding Labrador and the islands adjacent to Labrador, and

(ii) October 1, 2002 to April 20, 2003 throughout Labrador and the islands adjacent to Labrador;

(b) for snowshoe or varying hare

(i) October 12, 2002 to February 22, 2003, throughout the province excluding Labrador, the islands adjacent to Labrador, Great Island, Little Bay Islands, and Bell Island in Conception Bay,

(ii) October 12, 2002 to December 28, 2002, Great Island,

(iii) October 12, 2002 to November 2, 2002, Little Bay Islands,

(iv) October 1, 2002 to April 20, 2003 throughout Labrador and the islands adjacent to Labrador, and

(v) no open season, Bell Island, Conception Bay;

(c) for ptarmigan

(i) September 28, 2002 to November 9, 2002 in the Burin Area and the Avalon/Swift Current Area, excluding the Fair Haven Area,

- (ii) no open season, Fair Haven Area,
 - (iii) September 28, 2002 to November 30, 2002 in The Topsails Area,
 - (iv) September 28, 2002 to December 14, 2002, throughout the remainder of the province excluding Labrador, the islands adjacent to Labrador, the Avalon/Swift Current Area, the Burin Area, and The Topsails Area, and
 - (v) October 1, 2002 to April 20, 2003 throughout Labrador and the islands adjacent to Labrador; and
- (d) for ruffed grouse and spruce grouse
- (i) September 21, 2002 to December 28, 2002 throughout the province excluding Labrador and the islands adjacent to Labrador, and
 - (ii) October 1, 2002 to April 20, 2003 throughout Labrador and the islands adjacent to Labrador.

Open season,
snaring

4. The open seasons for snaring small game shall be

- (a) for arctic hare
 - (i) no open season throughout the province excluding Labrador and the islands adjacent to Labrador, and
 - (ii) October 1, 2002 to March 31, 2003 throughout Labrador and the islands adjacent to Labrador,
- (b) for snowshoe or varying hare
 - (i) October 12, 2002 to December 28, 2002, Great Island,
 - (ii) October 12, 2002 to November 2, 2002, Little Bay Islands and Bell Island,
 - (iii) no open season, Glover Island in Grand Lake, the Pine Marten Study Area and the Main River Study Area,

- (iv) October 12, 2002 to February 22, 2003 throughout the province excluding Labrador, the islands adjacent to Labrador, Great Island, Little Bay Islands, Bell Island in Conception Bay, Glover Island in Grand Lake, the Pine marten Study Area and the Main River Study Area, and
 - (v) October 1, 2002 to March 31, 2003 throughout Labrador and the islands adjacent to Labrador;
- (c) for ptarmigan
- (i) no open season, Glover Island in Grand Lake, the Pine Marten Study Area, the Fair Haven Area, the Burin Area and the Main River Study Area,
 - (ii) October 12, 2002 to February 22, 2003 throughout the province excluding Labrador, the islands adjacent to Labrador, Glover Island in Grand Lake, the Pine Marten Study Area, the Fair Haven Area, the Burin Area and the Main River Study Area, and
 - (iii) October 1, 2002 to March 31, 2003 throughout Labrador and the islands adjacent to Labrador; and
- (d) for ruffed grouse and spruce grouse
- (i) no open season, Glover Island in Grand Lake, the Pine Marten Study Area, and the Main River Study Area,
 - (ii) October 12, 2002 to February 22, 2003 throughout the province excluding Labrador, the islands adjacent to Labrador, Glover Island in Grand Lake, the Pine Marten Study Area and the Main River Study Area, and
 - (iii) October 1, 2002 to March 31, 2003 throughout Labrador and the islands adjacent to Labrador.

Hunting, shooting,
and snaring prohib-
ited

5. Notwithstanding the open seasons described in sections 3 and 4 all small game hunting, shooting, and snaring is prohibited

(a) on the following islands:

- (i) Kelly's Island, Conception Bay,

- (ii) Emberley Island, Placentia Bay,
 - (iii) Jude Island, Placentia Bay,
 - (iv) Brunette Island, Fortune Bay,
 - (v) Gannet Islands, Labrador,
 - (vi) Brent Island, Hare Bay,
 - (vii) Duck Island, Hare Bay,
 - (viii) Spring Island, Hare Bay, and
 - (ix) Funk Island; and
- (b) in the following Seabird Sanctuaries established under the *Seabird Ecological Reserve Regulations*:
- (i) Baccalieu Island Ecological Reserve,
 - (ii) Cape St. Mary's Ecological Reserve, and
 - (iii) Witless Bay Island Ecological Reserve.

Bag limits

6. (1) The bag limits shall be

- (a) for the province, excluding Labrador and the islands adjacent to Labrador, for shooting and snaring
 - (i) arctic hare, not applicable, no open season,
 - (ii) snowshoe or varying hare, a possession limit of 40 rabbits,
 - (iii) ptarmigan
 - (A) a daily limit of 12 birds and field possession limit of 24 birds except as provided below, and
 - (B) in the Avalon/Swift Current, Burin and Topsails Areas as described in the Schedule a daily limit of 6 birds and field possession limit of 12 birds, and

- (iv) ruffed grouse and spruce grouse, a daily bag limit of 20 birds with a field possession limit of 40 birds, ruffed and spruce grouse combined;
- (b) for Labrador, and the islands adjacent to Labrador, for shooting or snaring
 - (i) arctic hare, no limit, and
 - (ii) snowshoe or varying hare, no limit,
 - (iii) ptarmigan, daily bag limit of 25 birds with a field possession limit of 50 birds, and
 - (iv) ruffed and spruce grouse
 - (A) Northern Labrador, no limit, and
 - (B) Southern Labrador, daily bag limit of 20 with field possession limit of 40 birds, spruce and ruffed grouse combined.

(2) Notwithstanding subparagraph (1)(a)(ii), the possession limit does not apply to persons licensed under the *Food and Drug Act* (Canada), who may exceed the bag limit for snowshoe hare on their business premises for commercial purposes.

Small game licence

7. A resident who has resided permanently in the Torngat Mountains Electoral District for a period of not less than 6 consecutive months immediately prior to applying for the licence, may be issued a small game licence free of charge.

Field possession limit

8. Field possession limit refers to the number of birds a small game licence holder may carry while hunting or travelling in the country.

Prohibition

9. A person shall not transport or possess any firearm under the authority of a valid hunting licence without being in possession of an outdoor identification card, or non-resident equivalent, issued to the person.

Modified snaring requirements

10. A person shall not snare small game in the Northwest Grand Lake Area, the Terra Nova Area, the Charlottetown Enclave Area and

the Red Indian Lake Area as described in the Schedule except with a modified snaring device acceptable to the minister.

Repeal

11. The *Open Season Small Game Hunting and Snaring Order, 2001-2002*, Newfoundland and Labrador Regulation 59/01, is repealed.

Schedule

(a) Avalon/Swift Current Area

All that area of the Island of Newfoundland bounded by a line beginning at Friar Head in Fortune Bay;

Then northward following the eastern shoreline of Long Harbour and the Long Harbour River a distance of approximately 40 kilometres to the location where the Bay d'Espoir transmission line crosses the Long Harbour River;

Then following straight lines to the Tolt and the northern extremity of Whitehead Pond;

Then following the north shore of Whitehead Pond and the eastern shore of Pipers Hole River to Route 210;

Then following Route 210 to Goobies on the Trans Canada Highway;

Then following the Trans Canada Highway in a southerly direction to its junction with the local road providing access to the community of Sunnyside;

Then following the local road providing access to the Town of Sunnyside to the shoreline of Trinity Bay;

Then following the shorelines of Trinity, Conception, St. Mary's and Placentia Bays to the point where the shoreline meets the Piper's Hole River, thence following the eastern shoreline of the Piper's Hole River in a general northerly direction to the bridge that crosses the Burin Peninsula Highway, Route 210;

Then following Route 210 in a generally southerly direction to its intersection with the Terrenceville Highway;

Then following the north side of the Terrenceville highway to the shoreline of Fortune Bay;

Then following the shoreline of Fortune Bay to the point of commencement, including all offshore islands lying counter-clockwise from Friar Head, Fortune Bay, to the community of Sunnyside, Trinity Bay.

(b) Burin Area

All that area of the Island of Newfoundland bounded by a line beginning at the community of Terrenceville;

Then following the Terrenceville Highway to its intersection with the Burin Peninsula Highway Route 210;

Then following Route 210 in a generally northerly direction to where it crosses the bridge on the Piper's Hole River;

Then following the eastern shore of Piper's Hole River in a southerly direction to its mouth in Placentia Bay;

Then following the shoreline of Placentia and Fortune Bay to the point of commencement, excluding all offshore islands.

(c) Fair Haven Area

All that area of the Avalon Peninsula of the Island of Newfoundland bounded by a line beginning at the Chance Cove intersection with the Trans Canada Highway;

Then following a straight line in a southerly direction for approximately 50 metres to the northern shore of Gull Pond;

Then following the northern and western shore of Gull Pond to its southern extremity;

Then following a straight line for a distance of approximately 300 metres to the eastern shore of Big Gull Pond;

Then following the eastern shore of Big Gull Pond to its south eastern extremity;

Then following the eastern shores of the string of brooks and ponds leading southwest to where they empty into Placentia Bay near Little Pinchgut Cove;

Then following the coastline in a generally southerly direction to the mouth of Maturin Brook near the community of Long Harbour;

Then following the eastern shores of Maturin Brook and Maturin Ponds to the headwaters where it intersects the railway line;

Then following the railway line in a southerly direction to its intersection with the transmission line, a distance of approximately 2 kilometres;

Then following the transmission line in a northeasterly direction to the Trans Canada Highway;

Then following the Trans Canada Highway to the point of commencement.

(d) The Topsails

All that area of the Island of Newfoundland bounded by a line beginning at the mouth of Hinds Brook in Grand Lake;

Then following the southeastern shoreline of Grand Lake, Sandy Lake and Birchy Lake to the eastern end of Birchy Lake;

Then following a straight line to the closest point on the Trans Canada Highway;

Then following the Trans Canada Highway in a generally easterly and southerly direction to Badger;

Then following a straight line to the closest point on the south bank of the Exploits River;

Then following the Exploits River to Exploits Dam;

Then following the shoreline of Red Indian Lake in first, a generally northerly direction and then, a westerly direction to the mouth of Buchan's Brook;

Then following Buchan's Brook to Buchan's Lake;

Then following the western shoreline of Buchan's Lake to its northwestern extremity;

Then following a straight line to the southeastern extremity of Hind's Lake;

Then following the eastern shoreline of Hind's Lake to its outlet in Hind's Brook;

Then following the south bank of Hind's Brook to the point of commencement.

(e) Northern Labrador Zone

All that portion of Labrador, including adjacent islands, north of a line commencing at a point on the Labrador coast at 54° north latitude;

Then following the westerly line of 54° north latitude to a point where this line intersects with 62° west longitude;

Then following a northerly direction along the 62° west longitude line to a point where it intersects with the 55° north latitude line;

Then following the 55° north latitude line in a westerly direction to a point where it intersects with the Quebec/Labrador border.

(f) Southern Labrador Zone

All that portion of Labrador, including adjacent islands, lying to the south of a line commencing at a point on the Labrador coast at 54° north latitude;

Then following the westerly line of 54° north latitude to a point where this line intersects with 62° west longitude;

Then following a northerly direction along the 62° west longitude line to a point where it intersects with the 55° north latitude line;

Then following the 55° north latitude line in a westerly direction to a point where it intersects with the Quebec/Labrador border.

(g) Pine Marten Study Area

All that part of the Island of Newfoundland bounded by a line beginning at the intersection of the Trans Canada Highway, Route 1, and the Camp 33 Road;

Then following the Camp 33 Road to the southwestern extremity of Grand Lake;

Then following the shoreline of Grand Lake to the mouth of Red Indian Brook;

Then following the southern bank of Red Indian Brook a distance of approximately 15 kilometres to a small lake on its headwaters;

Then following a straight line in a generally southeasterly direction to the southeastern extremity of Lake of the Hills;

Then following the western bank of the brook flowing out of Lake of the Hills to Otter Pond;

Then following the western shore of Otter Pond and the western bank of the brook flowing out of Otter Pond into Lloyds River;

Then following the northern bank of Lloyds River and the northern shore of Lloyds Lake and the northern bank of Lloyds River, west of Lloyds Lake, to the mouth of the brook flowing out of Cormacks Lake;

Then following the eastern or northern bank of this brook to Cormacks Lake;

Then following a straight line in a generally northerly direction approximately 8 kilometres to a point on the headwaters of Little Barachois Brook;

Then following the northern bank of Little Barachois Brook to its intersection with the eastern boundary of the Barachois Pond Provincial Park;

Then following the eastern and northern boundaries of the park to the Trans Canada Highway;

Then following the Trans Canada Highway to the point of commencement.

(h) Main River Study Area

All that area of the Island of Newfoundland, commencing at a tributary on Main River UTM 481,975 metres east 5,522,600 metres north;

Then following this tributary in a generally northerly direction to UTM 483,840 metres east 5,528,225 metres north;

Then following a straight line in a southeasterly direction to UTM 488,460 metres east 5,525,000 metres north;

Then following a straight line in an easterly direction to the eastern extremity of a small pond at UTM 498,485 metres east 5,525,000 metres north;

Then following the eastern shoreline of the pond to its outlet;

Then following a chain of brooks in a southerly direction to UTM 498,771 metres east 5,522,615 metres north;

Then following a straight line in a generally southeasterly direction to UTM 502,332 metres east 5,518,590 metres north;

Then following a straight line in a generally southwesterly direction to UTM 499,538 metres east 5,516,260 metres north;

Then following a straight line in a southerly direction to the outlet of a small pond at UTM 499,615 metres east 5,513,620 metres north;

Then following a stream that flows in a southerly direction to Main River;

Then following Main River in a westerly direction to a small tributary at UTM 495,570 metres east 5,510,540 metres north;

Then following the tributary and a chain of ponds in a generally westerly direction to where a small stream is intersected by the Upper Humber Forest Access Road at UTM 480,650 metres east 5,509,735 metres north;

Then following a straight line in a westerly direction to the east shore of a small pond at UTM 469,023 metres east 5,510,070 metres north;

Then following the north side of the pond and a connecting tributary in a northwesterly direction to its intersection with the eastern boundary of Gros Morne National Park at UTM 466,335 metres east 5,510,602 metres north;

Then following the boundary of the park in a northerly direction to where it intersects a lake at UTM 461,750 metres east 5,529,000 metres north;

Then following the south shoreline of the lake in an easterly direction to its most eastern extremity;

Then following a straight line in an easterly direction to UTM 466,087 metres east 5,528,540 metres north;

Then following the southern shore of Parsons Pond River in an easterly direction to the point of commencement.

(i) Northwest Grand Lake Area

All that area of the Island of Newfoundland bounded by a line beginning at the intersection of the Trans Canada Highway, TCH, Route 1 and Camp 33 Road;

Then following Camp 33 Road to the southwest extremity of Grand Lake;

Then following the north shoreline of Grand Lake in a northeasterly direction to the Humber Canal;

Then following the south bank of the Humber Canal to its intersection with the TCH at Deer Lake;

Then following the TCH in a southwesterly direction to the point of commencement.

(j) Terra Nova Area

All that area of the Island of Newfoundland bounded by a line beginning at the intersection of North West River and the Terra Nova National Park, TNNP, boundary at UTM coordinates 706,250 metres east and 5,365,250 metres north;

Then following the north bank of the said river in a westerly direction to UTM coordinates 664,125 metres east and 5,346,625 metres north;

Then following a straight line in a northwesterly direction to UTM coordinates 663,750 metres east and 5,353,125 metres north;

Then following a straight line in a westerly direction to the northeastern extremity of Kepenkeck Lake;

Then following a straight line in a northwesterly direction to the eastern extremity of Newton's Lake;

Then following a straight line in a northerly direction to the eastern extremity of South West Pond;

Then following a straight line in a northeasterly direction to the western extremity of Dead Wolf Pond;

Then following the southern shoreline of Dead Wolf Pond to the mouth of a small stream entering the pond at its eastern extremity;

Then following this stream to its headwaters pond;

Then following a straight line for approximately 500 metres due east to an unnamed pond;

Then following a stream exiting this pond at its southeastern extremity;

Then following this stream in a southeasterly direction to its outflow in Riverhead Brook;

Then following this brook in an easterly direction to its mouth in Gambo Pond;

Then following the north shore of Gambo Pond to Gambo Brook;

Then following the west bank of Gambo Brook to its intersection with the Trans Canada Highway, TCH, Route 1;

Then following the TCH in an easterly direction to its intersection with the TNNP boundary;

Then following the western boundary of TNNP in a southerly direction to the point of commencement.

(k) Charlottetown Enclave Area

All that area of the island of Newfoundland bounded by a line beginning at the intersection of the Terra Nova National Park, TNNP, boundary and the north shoreline of Clode Sound, Bonavista Bay at UTM coordinates 720,554 metres east and 5,367,279 metres north;

Then following the TNNP boundary in a northerly direction to UTM coordinates 720,507 metres east and 5,370,209 metres north;

Then following the TNNP boundary in a northeasterly direction to UTM coordinates 721,554 metres east and 5,371,792 metres north;

Then following the TNNP boundary in a southeasterly direction to its intersection with the north shoreline of Clode Sound, Bonavista Bay at UTM coordinates 722,550 metres east and 5,369,850 metres north;

Then following the shoreline of Clode Sound, Bonavista Bay in a southwesterly direction to the point of commencement.

(l) Red Indian Lake Area

All that area of the Island of Newfoundland bounded by a line beginning at the mouth of Victoria River and Red Indian Lake;

Then following the north bank of Victoria River in a southwesterly direction to Victoria Lake;

Then following a mid-way line between the north and south shorelines of Victoria Lake to the mouth of a small river entering Victoria Lake at its southwestern extremity;

Then following the north bank of the Victoria River to a point opposite the mouth of a brook flowing from Peter Strides Pond;

Then following a straight line in a northerly direction to the intersection of the Pine Marten Study Area and Lloyds River at the mouth of the brook flowing from Cormack Lake;

Then following the Pine Marten Study Area boundary along Lloyds River in a northeasterly direction to the mouth of Otter Pond Brook;

Then following the western bank of Otter Pond Brook, the western shore of Otter Pond and the west bank of Otter Pond Brook to Lake of the Hills;

Then following a straight line in a northwesterly direction to UTM co-ordinates 471,250 metres east and 5,379,000 metres north;

Then following a straight line in a northeasterly direction to its intersection with Clench Brook at UTM co-ordinates 500,875 metres east and 5,401,000 metres north;

Then following the south bank of Clench Brook to its mouth on Red Indian Lake;

Then following a straight line in an easterly direction to the point of commencement.

©Earl G. Tucker, Queen's Printer



**NEWFOUNDLAND AND LABRADOR
REGULATION 76/02**

*Coyote Hunting Order
Newfoundland and Labrador
under the
Wild Life Regulations
and the
Wild Life Act*

(Filed October 9, 2002)

Under the authority of sections 88 and 114 of the *Wild Life Regulations* and the authority of the *Wild Life Act*, I make the following Order.

Dated at St. John's, October 4, 2002.

Julie Bettney
Minister of Tourism, Culture and Recreation

ORDER

Analysis

- | | |
|-----------------------|--------------|
| 1. Short title | 3. Specimens |
| 2. Permission to hunt | 4. Limit |

Short title

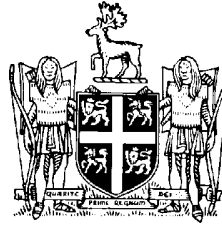
1. This Order may be cited as the *Coyote Hunting Order Newfoundland and Labrador*.

*Coyote Hunting Order
Newfoundland and Labrador*

76/02

Permission to hunt	<p>2. (1) The holder of a big game, small game or wolf shooting licence is permitted to hunt coyote by shooting, in the area and during the open season for which his or her licence is valid.</p> <p>(2) The holder of the licence referred to in subsection (1) shall only shoot coyotes using the type of firearm and ammunition that his or her licence permits.</p> <p>(3) A person who shoots coyotes with a shotgun shall not use shot size smaller than 2.</p>
Specimens	<p>3. A person who kills a coyote shall surrender the carcass to an office of the Inland Fish and Wildlife Division within 14 days of the date of the kill and may keep or sell the skin.</p>
Limit	<p>4. There is no limit on the number of coyotes which may be shot by a person.</p>

©Earl G. Tucker, Queen's Printer



**NEWFOUNDLAND AND LABRADOR
REGULATION 77/02**

*Construction Industry Early and Safe Return to Work and
Re-employment Regulations*
under the
Workplace Health, Safety and Compensation Act
(O.C. 2002 - 356)

(Filed October 10, 2002)

Under the authority of paragraph 123(2.1)(b) of the *Workplace Health, Safety and Compensation Act*, the commission, with the approval of the Lieutenant-Governor in Council makes the following regulations.

Dated at St. John's, October 9, 2002.

Deborah E. Fry
Clerk of the Executive Council
and Secretary to Cabinet

Wayne Trask
Chairperson of the Commission

REGULATIONS

Analysis

1. Short title
2. Construction industry
3. Commencement

Short title

1. These regulations may be cited as the *Construction Industry Early and Safe Return to Work and Re-employment Regulations*.

Construction
industry

2. The obligations of an employer engaged primarily in construction and a worker who performs construction work, in respect of a worker's early and safe return to work and the re-employment of the worker, are as set out in sections 89 and 89.1 of the Act.

Commencement

3. These regulations come into force on January 1, 2003.

©Earl G. Tucker, Queen's Printer

Index

PART I

Change of Name Act — Applications	665
City of St. John's Act — Notices	641
Judicature Act — Rules of the Supreme Court	653
Lands Act — Notice	658
Mineral Act — Notice	656
Quieting of Titles Act — Notices	659
Urban and Rural Planning Act — Notices of Registration	658

PART II

CONTINUING INDEX OF SUBORDINATE LEGISLATION

Title of Act and Subordinate Legislation made thereunder	CNR or Nfld. Reg.	Amendment	Nfld. Gazette Date & Page No.
Wild Life Act			
Furbearing Animals Trapping Order 2002-2003	NLR 67/02	R&S NLR 88/01	Oct 18/02, p. 459
Open Season Big Game Black Bear Hunting and Snaring Order, Labrador, 2002-2003	NLR 68/02	R&S NLR 53/01	Oct 18/02, p. 473
Open Season Fall Big Game Black Bear Hunting and Snaring Order, Newfoundland, 2002	NLR 69/02	R&S NLR 52/01	Oct 18/02, p. 479
Open Season Spring Big Game Black Bear Hunting and Snaring Order, 2003	NLR 70/02	R&S NLR 60/01	Oct 18/02, p. 483
Open Season Big Game Caribou Hunting Order, Labrador, 2002-2003	NLR 71/02	R&S NLR 54/01	Oct 18/02, p. 487
Open Season Big Game Caribou Hunting Order, Newfoundland 2002-2003	NLR 72/02	R&S NLR 55/01	Oct 18/02, p. 505
Open Season Big Game Moose Hunting Order, Labrador, 2002-2003	NLR 73/02	R&S NLR 56/01	Oct 18/02, p. 521
Open Season Big Game Moose Hunting Order, Newfoundland, 2002-2003	NLR 74/02	R&S NLR 57/01	Oct 18/02, p. 535
Open Season Small Game Hunting and Snaring Order, 2002-2003	NLR 75/02	R&S NLR 59/01	Oct 18/02, p. 583

PART II
CONTINUING INDEX OF SUBORDINATE LEGISLATION

Title of Act and Subordinate Legislation made thereunder	CNR or Nfld. Reg.	Amendment	Nfld. Gazette Date & Page No.
Wild Life Act (continued)			
Coyote Hunting Order, Newfoundland and Labrador	NLR 76/02	New	Oct 18/02, p. 601
Workplace, Health, Safety and Compensation Act			
Construction Industry Early and Safe Return to Work and Re-employment Regulations	NLR 77/02	New	Oct 18/02, p. 603

The Newfoundland and Labrador Gazette is published from the office of Earl G. Tucker, Queen's Printer.

Copy for publication must be received before **Friday, 4:30 p.m.**, seven days before publication, to ensure inclusion in next issue. Advertisements should be typewritten or printed legibly, separate from covering letter. Number of insertions required must be stated and the names of all signing officers typewritten or printed.

Advertising rates are available upon request. Subscription rate for *The Newfoundland and Labrador Gazette* is \$125.00 for 52 weeks plus applicable tax (\$133.75). Weekly issues of \$3.00 per copy, plus tax payable in advance.

All cheques, money orders, etc., should be made payable to THE NEWFOUNDLAND EXCHEQUER ACCOUNT and all correspondence should be addressed to: Office of the Queen's Printer, P. O. Box 8700, Ground Floor, East Block, Confederation Building, St. John's, NF A1B 4J6. Telephone: (709) 729-3649. Fax: (709) 729-1900.

Web site www.gov.nf.ca/queensprinter

Legislative History of the Judicature Act, 1791-1988

Price \$25.00 plus G.S.T.

(Plus \$2.00 postage and handling)

**Place your order by contacting: Office of The Queen's Printer,
Confederation Building, East Block, St. John's, NF. A1B 4J6.
Telephone: (709) 729-3649 Fax: (709) 729-1900**

**Government Information Product
Publication Rate Mail**

G.S.T. # R107442683

All requests for Subscription and Legislation MUST be prepaid.