

THE NEWFOUNDLAND AND LABRADOR GAZETTE

PART I

PUBLISHED BY AUTHORITY

Vol. 78

ST. JOHN'S, FRIDAY, DECEMBER 12, 2003

No. 50

MINERAL ACT

CORRECTION NOTICE (S)

In *The Newfoundland and Labrador Gazette* of November 28, 2003 there appeared a Mineral Act Notices regarding the partial surrenders of Mineral Licences 694M, 365M and 539M.

The notices were published in error. The licences should read 7694M, 7365M and 7539M

JIM HINCHEY, P.Geo.
Manager - Mineral Rights

File #: 774: 3169, 3175, 3941

Dec 12

In general terms, the purpose of Development Regulations Amendment No. 2, 2003 is to decrease the rear yard depth requirement for backlot development from 10 meters to 3 meters.

In general terms, the purpose of Development Regulations Amendment No. 3, 2003 is to allow double dwelling as a discretionary use in Commercial General Zone and all residential development in this zone is to be in compliance with Residential Medium Density Standards.

The Development Regulations Amendment No's, 2 & 3, 2003 comes into effect on the day that this notice is published in *The Newfoundland and Labrador Gazette*. Anyone who wishes to inspect a copy of the Town of Stephenville Development Regulations Amendment Nos. 2 & 3, 2003 may do so at the Town Office, 125 Carolina Avenue, Stephenville, NL, during normal working hours.

TOWN OF STEPHENVILLE
Town Clerk

Dec 12

URBAN AND RURAL PLANNING ACT

NOTICE OF REGISTRATION TOWN OF STEPHENVILLE DEVELOPMENT REGULATIONS AMENDMENTS No's 2 & 3, 2003

Take notice that the Town of Stephenville Development Regulations Amendment No.'s 2 & 3, 2003 adopted on the 6th day of November, 2003, has been registered by the Minister of Municipal and Provincial Affairs.

NOTICE OF REGISTRATION
ST. JOHN'S DEVELOPMENT REGULATIONS
AMENDMENT NUMBER 297, 2003

Take notice that the St. John's Development Regulations Amendment Number 297, 2003, adopted on the 17th day of November, 2003, has been registered by the Minister of Municipal and Provincial Affairs.

In general terms, the purpose of the St. John's Development Regulations Amendment Number 297, 2003 is to:

1. modify the definition for "Eating Establishment": and
2. to require applications for "Eating Establishments" and "Taverns" to be processed as Discretionary Use applications if the application site is located within 150 metres of a Church, a School, a Private School, or a Residential Zone; and
3. to require applications for "Restaurants" in "Converted Buildings" in the Residential Mixed (RM) Zone to be processed as Discretionary Use applications if the application site is located within 150 metres of a Church, a School, a Private School, or a Residential Zone.

The St. John's Development Regulations Amendment Number 297, 2003 comes into effect on the day that this notice is published in *The Newfoundland and Labrador Gazette*. Anyone who wishes to inspect a copy of the St. John's Development Regulations Amendment Number 297, 2003, may do so at the Engineering and Planning Department, 3rd Floor, St. John's City Hall, during normal business hours.

CITY OF ST. JOHN'S
Engineering and Planning Department

Dec 12

CITY OF ST. JOHN'S ACT



ST. JOHN'S MUNICIPAL COUNCIL
NOTICE
ST. JOHN'S TAXI BY-LAW

TAKE NOTICE that the St. John's Municipal Council has enacted a new TAXI BY-LAW.

The said By-Law was passed by Council on the 1st day of December, 2003, and will have the effect of regulating the use of taxis in the City of St. John's.

All persons are hereby required to take notice that any person who wishes to view such By-Law may view same at the Office of the City Solicitor of the St. John's Municipal Council at City Hall, and that any person who wishes to obtain a copy thereof may obtain it at the said office upon the payment of a reasonable charge as established by the St. John's Municipal Council for such copy.

Dated this 5th day of December, 2003.

NEIL MARTIN
City Clerk

P. O. # 35743

Dec 12

QUIETING OF TITLES ACT

2003 01T NO. 4249
IN THE SUPREME COURT
OF NEWFOUNDLAND AND LABRADOR
TRIAL DIVISION

IN THE MATTER OF the *Quieting of Titles Act*, Chapter Q-3 of the Revised Statutes of Newfoundland and Labrador, 1990, and amendments thereto;

AND IN THE MATTER OF an Application by Monica Ryan, of South Pinette, in the Province of Prince Edward Island, Canada, to the Trial Division or a Judge of the Trial Division, for an investigation with respect to a certain piece or parcel of land situate and being located off Marine Drive in the Town of Torbay in the Province of Newfoundland and Labrador, Canada;

NOTICE OF APPLICATION

NOTICE is hereby given to all parties that Monica Ryan (hereinafter called the "Applicant") has applied to the Supreme Court of Newfoundland and Labrador, Trial Division, to have the title to ALL THAT piece or parcel of land comprising the property described in Schedule "A" hereto, of which piece or parcel of land the said Applicant claims to be the owner, investigated, and for a Declaration that the Applicant is the absolute owner in fee simple in possession thereof free from those exceptions and qualifications contained in Sections 13 and 22 of the *Quieting of Titles Act* and free from all other rights, claims, interests and demands whatsoever including any claim by the Crown to the said property save and except for the qualification as to a public highway mentioned in Subsection (2) of Section 22 of the said Act, and the said Applicant has been ordered to publish notice of the Application as required by the above named Act.

All persons having title adverse to the said title claimed by the said Applicant shall file in the Registry of the Supreme Court of Newfoundland and Labrador, Trial Division, at St. John's particulars of such adverse claim and serve together with an Affidavit verifying same on the undersigned solicitors for the Applicant on or before December 29th, 2003 after which date no party having any claim shall be permitted to file the same or to be heard except by leave of the Court and subject to such conditions as the Court may deem just.

All such adverse claims shall then be investigated in such manner as the said Supreme Court may direct.

MCINNES COOPER
Solicitors for the Applicant
PER: Sandra A. Gogal

ADDRESS FOR SERVICE
5th Floor, Baine Johnston Centre
10 Fort William Place
St. John's, NL
A1C 5X4

Dec 12

SCHEDULE 'A'

All that piece or parcel of land situate and being on the southwest side of Marine Drive, at Torbay, in the Electoral District of Cape St. Francis, in the Province of Newfoundland and Labrador, abutted and bounded as follows, that is to say:

Beginning at a point on southwest side of Marine Drive, at Torbay, the said point having coordinates N 5 279 669.142 metres and E 326 820.118 metres of the Modified Three Degree Transverse Mercator Projection for the Province of Newfoundland and Labrador;

Thence running by land of William Hickey, registered in Roll 1329, Frame 1630 in the Provincial Registry of Deeds, S 64° 42' 53" W, a distance of 88.420 metres to a point;

Thence running by land of Paul Doyle, registered in Roll 1370, Frame 298 in the Provincial Registry of Deeds, S 64° 43' 08" W, a distance of 55.909 metres to a point;

And thence, S 68° 22' 13" W, a distance of 51.585 metres to a point;

And thence, S 52° 08' 38" W, a distance of 22.030 metres to a point;

And thence, S 7° 49' 55" E, a distance of 21.838 metres to a point;

And thence, S 22° 43' 21" E, a distance of 28.412 metres to a point;

And thence, S 35° 35' 22" E, a distance of 43.541 metres to a point;

Thence running by land of Elizabeth Reddy, registered in Roll 958, Frame 135 in the Provincial Registry of Deeds, S 56° 45' 38" W, a distance of 21.722 metres to a point;

And thence, S 60° 24' 43" W, a distance of 19.716 metres to a point;

And thence, S 61° 24' 03" W, a distance of 54.967 metres to a point;

And thence, S 50° 52' 08" W, a distance of 75.680 metres to a point;

And thence, S 52° 50' 48" W, a distance of 13.958 metres to a point;

And thence, S 45° 12' 08" W, a distance of 22.698 metres to a point;

And thence, S 57° 24' 33" W, a distance of 22.876 metres to a point;

And thence, S 48° 52' 28" W, a distance of 19.038 metres to a point;

And thence, S 44° 22' 08" W, a distance of 23.444 metres to a point;

And thence, S 56° 13' 48" W, a distance of 23.985 metres to a point;

And thence, S 47° 06' 53" W, a distance of 16.190 metres to a point;

And thence, S 55° 21' 39" W, a distance of 16.050 metres to a point;

And thence, S 40° 43' 34" W, a distance of 8.817 metres to a point;

And thence, S 62° 33' 53" W, a distance of 18.433 metres to a point;

Thence running by land Now or Formerly of John Lynch, N 16° 31' 22" W, a distance of 30.638 metres to a point;

And thence, N 31° 25' 27" W, a distance of 51.425 metres to a point;

And thence, N 23° 44' 12" W, a distance of 32.940 metres to a point;

And thence, N 26° 52' 04" W, a distance of 58.534 metres to a point;

And thence, N 34° 35' 09" W, a distance of 19.667 metres to a point;

And thence, N 32° 54' 54" W, a distance of 37.447 metres to a point;

And thence, N 55° 06' 51" E, a distance of 30.390 metres to a point;

And thence, N 43° 30' 36" E, a distance of 13.572 metres to a point;

And thence, N 55° 10' 41" E, a distance of 42.553 metres to a point;

And thence, N 62° 45' 41" E, a distance of 25.971 metres to a point;

And thence, N 50° 07' 01" E, a distance of 51.183 metres to a point;

And thence, N 32° 41' 36" E, a distance of 20.065 metres to a point;

And thence, N 20° 02' 06" E, a distance of 33.253 metres to a point;

And thence, N 3° 31' 36" E, a distance of 33.263 metres to a point;

And thence, N 23° 33' 31" E, a distance of 18.171 metres to a point;

And thence, N 48° 14' 41" E, a distance of 42.439 metres to a point;

And thence, N 37° 35' 34" W, a distance of 44.108 metres to a point;

And thence, N 36° 13' 39" W, a distance of 13.738 metres to a point;

And thence, N 19° 27' 39" W, a distance of 22.085 metres to a point;

And thence, N 55° 10' 49" W, a distance of 8.815 metres to a point;

Thence running along a Reservation (15m Wide) along the shore of North Pond Brook to a point being distant 208.376 metres as measured on a bearing of N 53° 06' 34" E from the aforementioned point;

Thence running by land of th Estate of Patrick Ryan, S 37° 41' 11" E, a distance of 88.705 metres to a point;

And thence, N 44° 14' 50" E, a distance of 15.053 metres to a point;

And thence, S 34° 09' 53" E, a distance of 18.227 metres to a point;

And thence, N 38° 48' 27" E, a distance of 17.772 metres to a point;

Thence running by Lot 7, S 34° 10' 16" E, a distance of 24.223 metres to a point;

Thence running by Lot 6, S 34° 08' 00" E, a distance of 26.423 metres to a point;

Thence running by Lot 5, S 24° 03' 02" E, a distance of 30.487 metres to a point;

Thence running by Lot 4, S 21° 57' 50" E, a distance of 30.526 metres to a point;

Thence running by Lot 3, S 20° 19' 10" E, a distance of 30.534 metres to a point;

Thence running by Lot 2, S 24° 44' 17" E, a distance of 30.447 metres to a point;

Thence running by Lot 1, S 24° 44' 17" E, a distance of 30.491 metres to a point;

And thence N 64 ° 43' 48" E, a distance of 60.960 metres to a point;

Thence running along the aforementioned southwest side of Marine Drive, S 25° 06' 22" E, a distance of 20.120 metres, more or less to the principal point of beginning.

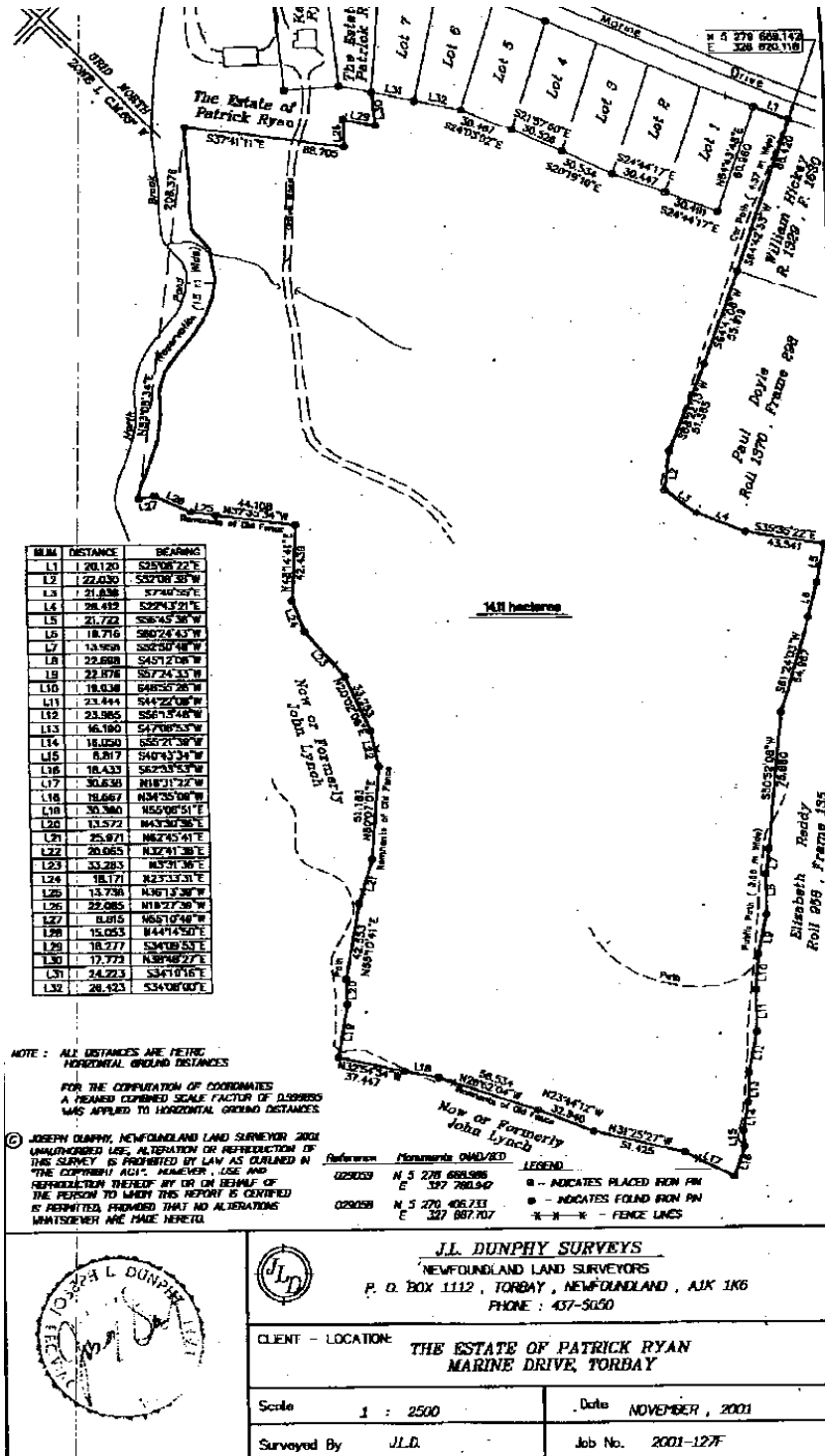
The above described piece or parcel of land contains an area of 14.11 hectares, more or less, and is more particularly shown and delineated on the attached survey plan No. 2001-127F.

The above described piece or parcel of land is subject to a Car Path (4.57 m Wide) running partially along the southern boundary, and is more particularly shown and delineated on the attached survey plan No. 2001-127F.

The above described piece or parcel of land is subject to a Public Path. (3.66 m Wide) running partially along the southern boundary, and is more particularly shown and delineated on the attached survey plan No. 2001-127F.

The above described piece or parcel of land is subject to a Gravel Road running partially through the property, and is more particularly shown and delineated on the attached survey plan No. 2001-127F.

All bearings being referred to the Central Meridian of Fifty-three Degrees West Longitude of Zone 1 of the Modified Three Degree Transverse Mercator Projection for the Province of Newfoundland and Labrador.



2003 01T NO. 4351
IN THE SUPREME COURT
OF NEWFOUNDLAND AND LABRADOR
TRIAL DIVISION

IN THE MATTER OF the *Quieting of Titles Act*, Chapter Q-3 of the Revised Statutes of Newfoundland and Labrador, 1990

AND IN THE MATTER OF all that piece or parcel of land situate and being on the Foxtrap Access Road, Foxtrap, Conception Bay South, in the Province of Newfoundland and Labrador, Canada (Parcel A)

AND IN THE MATTER OF all that piece or parcel of land situate and being on the Foxtrap Access Road, Foxtrap, Conception Bay South, in the Province of Newfoundland and Labrador, Canada (Parcel B)

AND IN THE MATTER OF an application of the Registrar of the Supreme Court, Administrator of the Estate and Effects of Joseph Petten

**NOTICE OF APPLICATION UNDER THE
QUIETING OF TITLES ACT,
R.S.N.L. 1990, c Q-3, AS AMENDED**

NOTICE is hereby given to all parties that Registrar of the Supreme Court as Administrator of the Estate and Effects of Joseph Petten has applied to the Supreme Court of Newfoundland and Labrador, Trial Division, in the Judicial Centre of St. John's to have the title to ALL THAT piece or parcel of land situate and being on the Foxtrap Access Road, Foxtrap, Conception Bay South, in the Province of Newfoundland and Labrador, Canada, and known as Parcel A, and being more particularly described in the Schedule marked "A" annexed hereto, AND title to ALL THAT piece or parcel of land situate and being on the Foxtrap Access Road, Foxtrap, Conception Bay South, in the Province of Newfoundland and Labrador, Canada, and known as Parcel "B" and being more particularly described in the Schedule marked "B" annexed hereto, of which he claims on his own behalf to be the owner, investigated and for a declaration that he is the absolute owner thereof. All persons having a claim adverse to this title claimed by this Petitioner shall file in the Registry of the Supreme Court, Trial Division, Judicial Centre of St. John's, at the Court House Building, Duckworth Street, St. John's, Newfoundland and Labrador, Canada, A1C 5M3, particulars of such adverse claim and serve the same together with an Affidavit verifying the same on the undersigned Solicitor for the Petitioner on or before the 9th day of January, 2004, after which date no party having any claim shall be permitted to file the same or to be heard except by special leave of the Court and subject to such conditions as the Court may deem just. All such adverse claims shall then be investigated in such manner as the

Supreme Court of Newfoundland and Labrador, Trial Division, may direct.

DATED at St. John's, Newfoundland and Labrador, this 5th day of December, 2003.

LEARMONTH, DUNNE & CLARKE
Solicitor for the Petitioner
PER: Joseph F. Boulos

ADDRESS FOR SERVICE
22 Church Hill
P. O. Box 700
St. John's, NL
A1C 5L4

Dec 12

SCHEDULE 'A'
Estate of Joseph Petten
Foxtrap Access Road
Foxtrap, CBS
Parcel "A"

All that piece or parcel of land situate and being on the Foxtrap Access Road, in the community of Foxtrap, CBS, abutted and bounded as follows, that is to say:

Beginning at a point, said point being the western limit of the Foxtrap Access Road and having Modified Three Degree Transverse Mercator Coordinates of N 5 260 670.630 and E 305 530.586 (NAD/83) and being in zone (1) with the reference meridian at fifty three degrees west longitude.

Thence running by Foxtrap Access Road, south forty degrees fifty three minutes forty five seconds east, fifty six decimal four six zero meters;

Thence turning and running by civic no. 302 Foxtrap Access Road, owned by Eugene Colbourne (roll 167 frame 2294), south seventy nine degrees forty nine minutes zero zero seconds west, twenty four decimal four six zero meters; south seventy four degrees twenty seven minutes zero zero seconds west, thirty eight decimal five eight zero meters; south seventy eight degrees twenty six minutes zero zero seconds west, thirty three decimal four five zero meters; south seventy seven degrees forty minutes zero zero seconds west, seventy five decimal eight nine zero meters; south five degrees twenty three minutes zero zero seconds west, fourteen decimal four two zero meters;

Thence turning and running by land now or formerly owned by Robert and John Haines, north five degrees fifty minutes thirty second west, fifty six decimal one one six meters;

Thence turning and running by civic nos. 290-292 Foxtrap Access Road, owned by Albert Nolan (roll 8764 frame 1084), north seventy four degrees nineteen minutes thirty five seconds east, one hundred and forty three decimal five nine two meters, more or less, to the point of beginning. The whole containing in all an area of zero decimal seven four two (0.742) hectares, more or less, and being more particularly described and delineated on the plan hereto attached.

All bearings refer to Grid Noth.

SCHEDULE 'B'
Estate of Joseph Petten
Foxtrap Access Road
Foxtrap, CBS
Parcel "B"

All that piece or parcel of land situate and being on the Foxtrap Access Road, in the community of Foxtrap, CBS, abutted and bounded as follows, that is to say:

Beginning at a point, said point being the eastern limit of the Foxtrap Access Road and having Modified Three Degree

Transverse Mercator Coordinates of N 5 260 676.170 and E 305 553.072 (NAD/83) and being in zone (1) with the reference meridian at fifty three degrees west longitude.

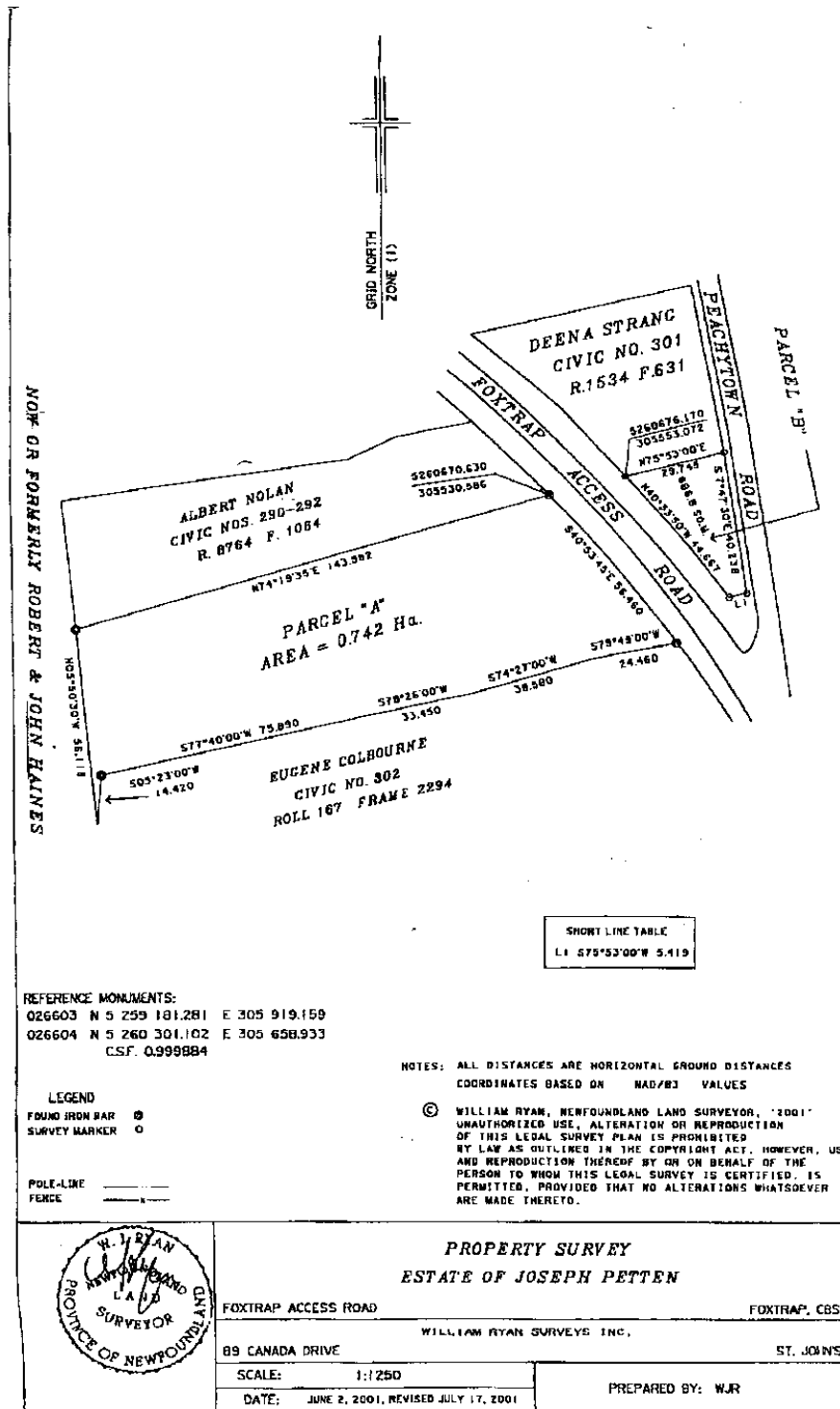
Thence running by civic no. 301 Foxtrap Access Road, owned by Deena Strang (roll 1534 frame 631), north seventy five degrees fifty three minutes zero zero seconds east, twenty nine decimal seven four five meters;

Thence turning and running by Peachytown Road, south seven degrees forty seven minutes thirty seconds east, forty decimal two three eight meters;

Thence turning and running, south seventy five degrees fifty three minutes zero zero seconds west, five decimal four one nine meters;

Thence turning and running by Foxtrap Access Road, north forty degrees thirty three minutes fifty seconds west, forty four decimal six six seven meters, more or less, to the point of beginning. The whole containing in all an area of six hundred and eight six decimal eight (686.8) square meters, more or less, and being more particularly described and delineated on the plan hereto attached.

All bearings referred to grid north.



2003 05T NO. 0229
IN THE SUPREME COURT
OF NEWFOUNDLAND AND LABRADOR
TRIAL DIVISION

NOTICE OF APPLICATION under the *Quieting of Titles Act*, Chapter Q-3 of the Revised Statutes of Newfoundland and Labrador, 1990, and amendments thereto;

Notice is hereby given to all parties that John Vivian, of Port Rexton, in the District of Trinity North, in the Province of Newfoundland and Labrador, has applied to the Supreme Court, Trial Division, Gander, to have title to all that piece or parcel of property situate at Port Rexton, in the Province of Newfoundland and Labrador, which property is more particularly described in Schedules "A", "B", "D", "F", "H" and "J" hereto annexed and shown in Schedules "C", "E", "G", "I" and "K" hereto annexed.

ALL BEARINGS aforementioned, for which John Vivian claims to be the owner investigated and for a Declaration that he is the absolute owner in fee simple in possession and the said John Vivian has been ordered to public Notice of Application as required by the above named Act.

All persons having title adverse to the said title claimed by the said John Vivian shall file in the Registry of the Supreme Court of Newfoundland and Labrador, Trial Division, Gander, particulars of such adverse claim and serve the same together with an Affidavit verifying same on the undersigned Solicitors for the Petitioner on or before the 26th day of December, 2003, after which date no party having any claim shall be permitted to file the same or to be heard except by special leave of the Court and subject to such conditions as the Court may deem just.

All such adverse claims shall be investigated then in such manner as the Supreme Court of Newfoundland and Labrador, Trial Division, Gander, may direct.

DATED AT Clarenville, in the Province of Newfoundland and Labrador, this 1st day of December, 2003.

MILLS, HUSSEY & PITTMAN
Solicitors for the Applicant
PER: Corwin Mills, Q.C.

ADDRESS FOR SERVICE:
111 Manitoba Drive
Suite 201
Clarenville, NL
A5A 1K2

Dec 12

PARCEL A
SCHEDULE 'A'
DESCRIPTION

All that piece or parcel of land situate and being at Port Rexton, in the Electoral District of Trinity North, in the Province of Newfoundland and Labrador, Canada, abutted and bounded as follows, that is to say:

BEGINNING at a point in the northeastern limit of Mill Road the said point having NAD-83 Co-ordinates of N 5,360,911.117 meters and E 280,067.248 meters of the Modified 3° Transverse Mercator Grid Projection for the Province of Newfoundland and Labrador.

THENCE running along the said northeastern limit of Mill Road north fourteen degrees fifty minutes thirty six seconds west, twenty nine decimal zero zero zero meters;

THENCE north twenty six degrees fifty five minutes fifty four seconds west, thirteen decimal zero four one meters;

THENCE north twenty four degrees forty two minutes twelve seconds west, twenty seven decimal nine six five meters;

AND THENCE north thirty five degrees six minutes forty five seconds west, forty seven decimal two eight two meters.

THENCE running by land of Roland Taylor south eight three degrees thirty six minutes thirty nine seconds east, thirty decimal four zero seven meters;

AND THENCE north one degree twenty three minutes twenty one seconds west, thirty decimal two three meters.

THENCE running by land of Joseph Brennock (Volume 36, Folio 121) north eighty eight degrees fourteen minutes thirty three seconds east, twenty eight decimal five seven one meters;

THENCE south thirty nine degrees fifty six minutes nine seconds east, twenty two decimal nine four one meters;

AND THENCE south sixty one degrees forty six minutes thirty six seconds east, nineteen decimal eight one three meters;

THENCE running by land of Joseph Brennock (Volume 36, Folio 121) and by Crown land south twenty seven degrees forty minutes zero seconds east, twenty six decimal nine five three meters.

THENCE running by Crown Land south eighty degrees fifty nine minutes fifty seven seconds east, twelve decimal six seven five meters.

THENCE running along the western limit of the former Canadian National Railways Right of Way, fifteen decimal two four meters wide, south eleven degrees thirty eight minutes twenty one seconds west, fifty three decimal four two seven meters;

AND THENCE south four degrees thirty three minutes fifty one seconds west, eighteen decimal zero five eight meters.

THENCE running by land of Fishers Loft Inn Enterprises south eighty degrees forty three minutes forty five seconds west, fifty one decimal five zero zero meters, more or less, to the point of beginning.

CONTAINING an area of 0.86 hectares, more or less, and being more particularly shown on the diagram annexed hereto.

All bearings being referred to Grid North of the above mentioned Projection.

PARCEL 'A'
SCHEDULE 'B'
DESCRIPTION

All that piece or parcel of land situate and being at Port Rexton, in the Electoral District of Trinity North, in the Province of Newfoundland and Labrador, Canada, abutted and bounded as follows, that is to say:

BEGINNING at a point in the southwestern limit of Mill Road the said point having NAD-83 Co-ordinates of N 5,360,909.496 meters and E 280,057.319 meters of the Modified 3° Transverse Mercator Grid Projection for the Province of Newfoundland and Labrador.

THENCE running along by land of Fishers Loft Inn Enterprises and by Crown Land south seventy eight degrees fifty six minutes forty five seconds west, one hundred eighty decimal five five four meters.

THENCE running along the eastern limit of Rocky Hill Road north fourteen degrees thirty nine minutes thirty seconds east, one hundred twelve decimal seven seven eight meters;

THENCE north twenty degrees thirty eight minutes nine seconds east, fifty two decimal one one two meters;

AND THENCE north twenty five degrees one minute fifteen seconds east, fifty two decimal seven five five meters;

THENCE running north eighty four degrees fifty six minutes zero seconds east, seven decimal three four two metres.

THENCE running along the said southwestern limit of Mill Road south thirty five degrees forty three minutes fifty one seconds east, one hundred four decimal two five eight meters;

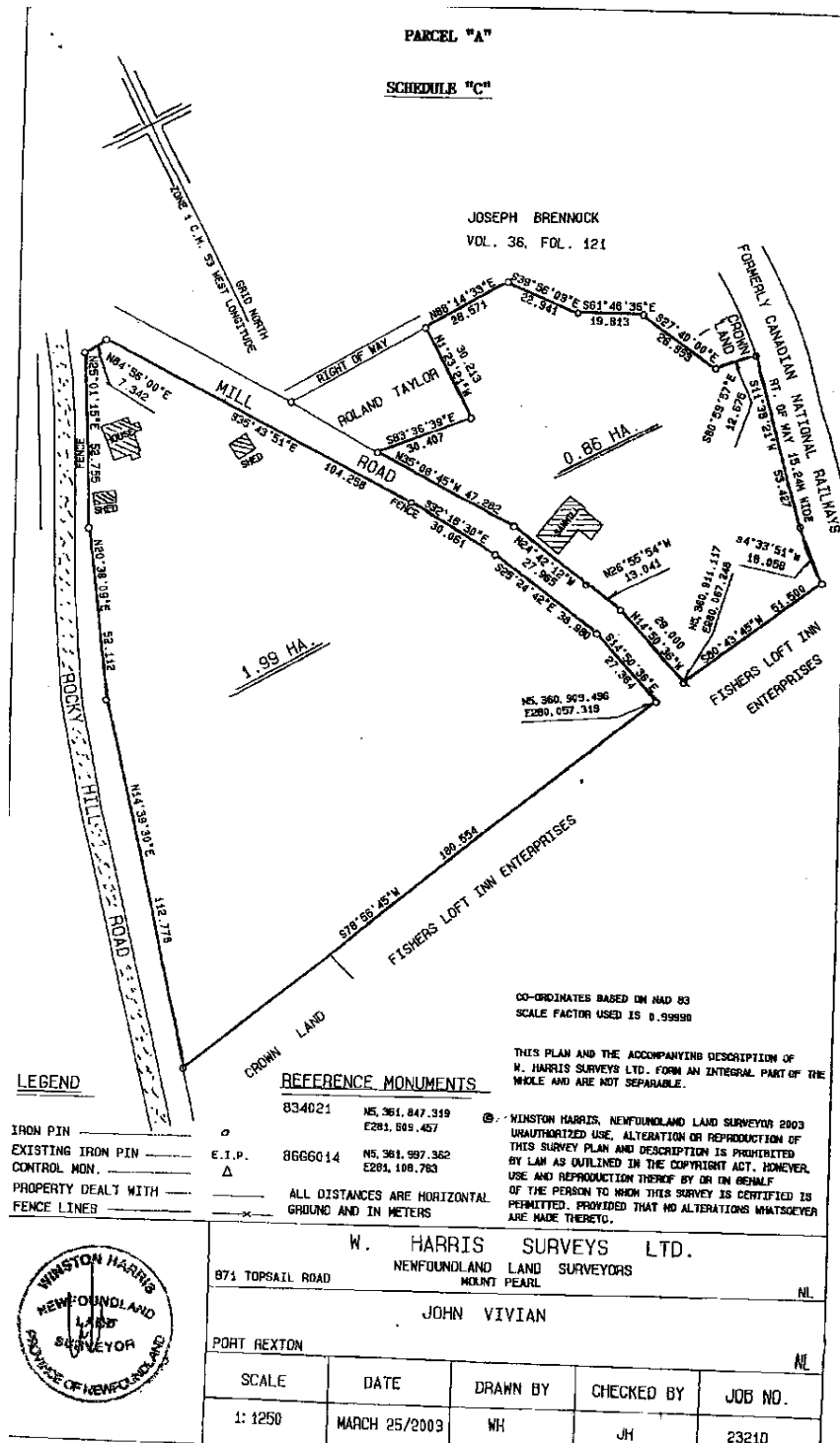
THENCE south thirty two degrees sixteen minutes thirty seconds east, thirty decimal zero six one meters;

THENCE south twenty five degrees twenty four minutes forty two seconds east, thirty eight decimal nine eight zero meters;

AND THENCE south fourteen degrees fifty minutes thirty six seconds east, twenty seven decimal three six four meters, more or less, to the point of beginning.

CONTAINING an area of 1.99 hectares, more or less, and being more particularly shown on the diagram annexed hereto.

All bearings being referred to Grid North to the above mentioned Projection.



PARCEL "B"
SCHEDULE 'D'

DESCRIPTION

All that piece or parcel of land situate and being at Port Rexton, in the Electoral District of Trinity North, in the Province of Newfoundland and Labrador, Canada, abutted and bounded as follows, that is to say:

BEGINNING at a point in the southern of Station Road the said point having NAD-83 Co-ordinates of N 5,361,313.627 meters and E 280,119.737 meters of the Modified 3° Transverse Mercator Grid Projection for the Province of Newfoundland and Labrador.

THENCE running by The Estate of Charles Randell south ten degrees nineteen minutes twenty one seconds west, ninety decimal one three five meters.

THENCE running by The Estate of Jack Piercey north seventy six degrees fifty one minutes thirty six seconds west, twenty one decimal eight nine two meters;

THENCE north twenty one degrees forty seven minutes twenty four seconds east, nineteen decimal eight six nine meters;

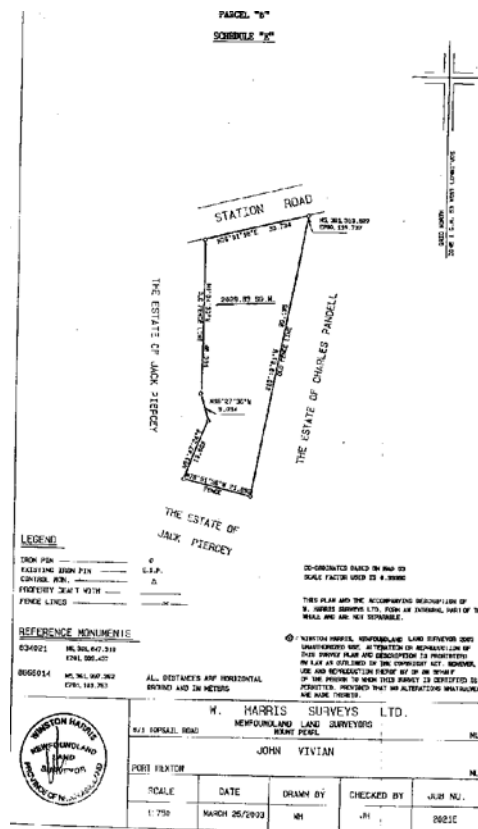
THENCE north sixteen degrees twenty seven minutes thirty six seconds west, nine decimal zero nine four meters

AND THENCE north zero degrees four minutes thirty seconds west, forty eight decimal three eight one metres.

THENCE running along the said southern limit of Station Road north seventy six degrees one minute eighteen seconds east, thirty three decimal seven three four meters, more or less, to the point of beginning;

CONTAINING an area of 2029.83 sq. metres, more or less, and being more particularly shown on the diagram annexed hereto.

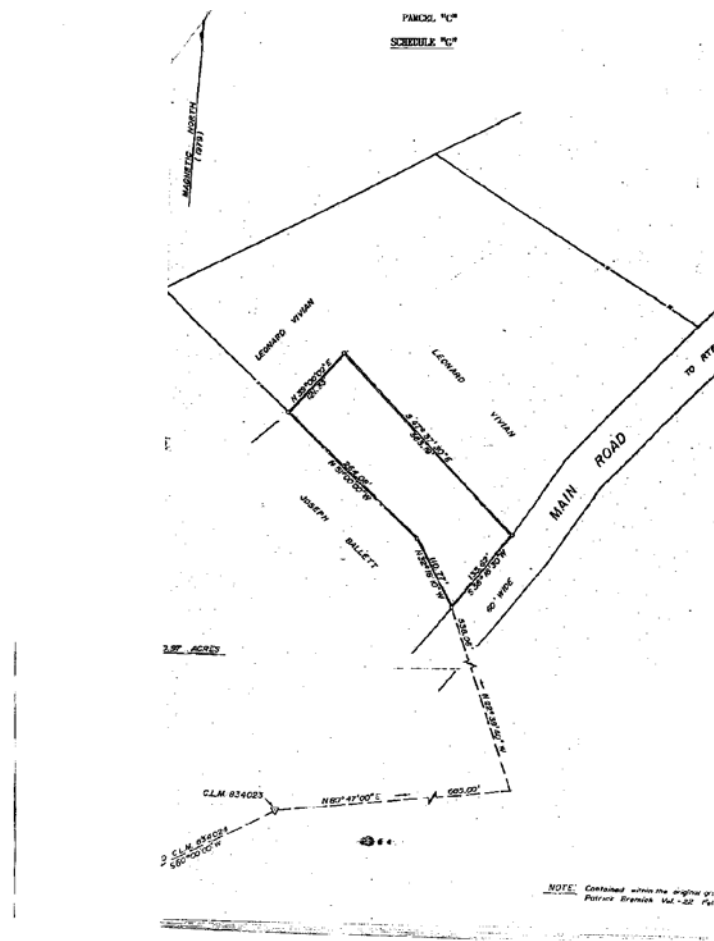
All bearings being referred to Grid North to the above mentioned Projection.



PARCEL "C"
SCHEDULE "F"
John Vivian of Port Rexton

All that piece or parcel of land situate and being at Port Rexton in the Electoral District of Trinity North abutted and bounded as follows, that is to say; Beginning at a point in the westerly limit of the Main Road, sixty feet wide, the said point being north twenty two degrees, thirty nine minutes forty seconds west five hundred and thirty six feet and six hundredths of a foot from a point which point is north eighty degrees forty seven minutes east six hundred and eighty five feet from Crown Lands monument no. 834023 which monument is on a bearing of south sixty degrees west to crown lands monument as 834024; thence running by land of Joseph Ballett north thirty two degrees eighteen minutes ten

seconds west one hundred and ten feet and seventy seven hundredths of a foot, and thence north fifty one degrees west two hundred and sixty four feet and eight hundredths of a foot; thence running by land of Leonard Vivian north thirty nine degrees east one hundred and twenty one feet and thirty three hundredths of a foot, and thence south forty seven degrees thirty seven minutes thirty seconds east three hundred and sixty three feet and nineteen hundredths of a foot; thence running along the westerly limit of the said Main Road south thirty six degrees sixteen minutes thirty seconds west one hundred and thirty five feet and sixty two hundredths of a foot, more or less, to the point of beginning and containing 0.97 acres and being contained within the original grant to Patrick Bremick volume - 22 folio - 5; all bearings being magnetic.



PARCEL "D"
SCHEDULE "H"

All that piece or parcel of land situate and being on the Western side of Rocky Hill Road at Port Rexton, Trinity Bay, in the Provincial electoral District of Trinity North, Newfoundland, abutted and bounded as follows, that is to say;

COMMENCING at a point with said point being a distance of four hundred forty-three decimal eight five three (443.853) metres as measured on a bearing on North zero three degrees twenty-six minutes zero seven seconds East (N 03° 26' 07" E) from Crown Land monument # 834023;

THENCE running by land of John Vivian registered in Roll 1267, Frame 685 at the Registry of Deeds South eighty-three degrees fifty-six minutes fifty-three seconds West (S 83° 56' 53" W) one hundred forty-one decimal four eight zero (141.480) metres;

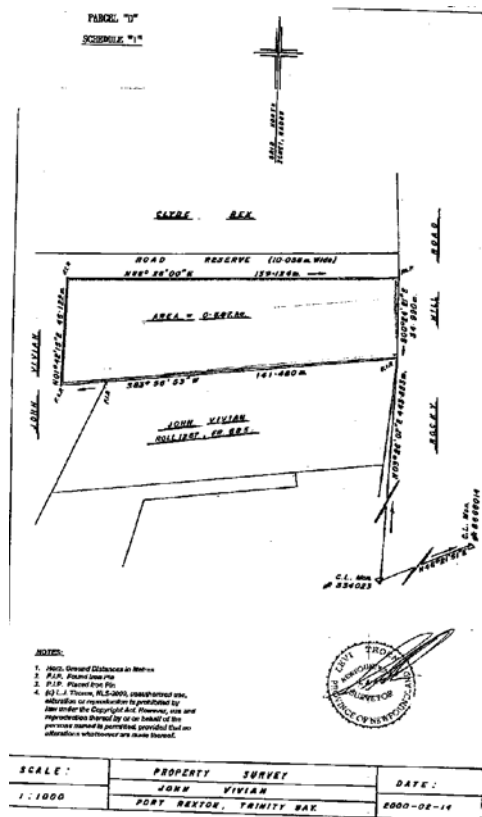
THENCE running by other land of John Vivian North zero one degrees forty-two minutes fifteen seconds East (N 01° 42' 15" E) forty-six decimal one two two (45.122) metres;

THENCE running along the southern limit of a Road Reserve (10.058 metres wide) North eighty-eight degrees twenty-six minutes zero zero seconds East (N 88° 26' 00" E), one hundred thirty-nine decimal one two four (139.124) metres;

THENCE running along the aforementioned western side of Rocky Hill Road South zero zero degrees twenty-four minutes twenty-one seconds East (S 00° 24' 21" E) thirty-four decimal nine nine zero (34.990) metres, more or less, to the point of commencement;

AND CONTAINING, in all, an area of zero decimal five six seven (0.567) hectares; the same being more particularly described and delineated on the attached plan;

All bearings being referred to Grid North (NAD-83, C.M. 53° West).



PARCEL "E"
SCHEDULE "J"

All that piece or parcel of land situate and being at Port Rexton, in the Electoral district of Trinity Bay, in the Provincial Electoral District of Trinity North, Newfoundland, abutted and bounded as follows, that is to say;

Beginning at a point with said point being a distance of three hundred and twelve decimal four seven (312.47) metres on a bearing of North thirty-three degrees forty-eight minutes thirty-two seconds West (N 33° 48' 32" W) from Control Monument No. 834023;

THENCE by Crown Land North eighty-six degrees twenty-two minutes West (N 86° 22' W) two hundred and six decimal seven eight (206.78) metres;

THENCE by property of Oscar Fowlow and Crown Land North zero zero degrees thirty-three minutes West (N 00° 33' W) seventy-eight decimal six five (78.65) metres;

THENCE by Crown Land North forty degrees thirty-seven minutes West (N 40° 37' E) thirty-four decimal zero six (34.06) metres,

THENCE North zero two degrees twenty-eight minutes West (N 02° 28' W) two hundred and twelve decimal zero nine (212.09) metres,

THENCE North seventy-three degrees twenty-two minutes East (N 73° 22' E) two hundred and one decimal one seven (201.17) metres;

THENCE by property claimed by the Randell Estate and property of Clyde Rex South zero two degrees twenty-one minutes East (S 02° 21' E) one hundred and seventy-five decimal three one (175.31) metres;

THENCE by the Southern limit of a Road Reservation, ten decimal zero five eight (10.058) metres wide, North eighty-eight degrees twenty-six minutes East (N 88° 26' E) ninety-nine decimal six seven (99.67) metres;

THENCE by property of Mary Lawlor South zero one degrees forty-two minutes West (S 01° 42' W) forty-six decimal one two (46.12) metres;

THENCE North eighty-three degrees fifty-seven minutes East (N 83° 57' E) nineteen decimal three one (19.31) metres;

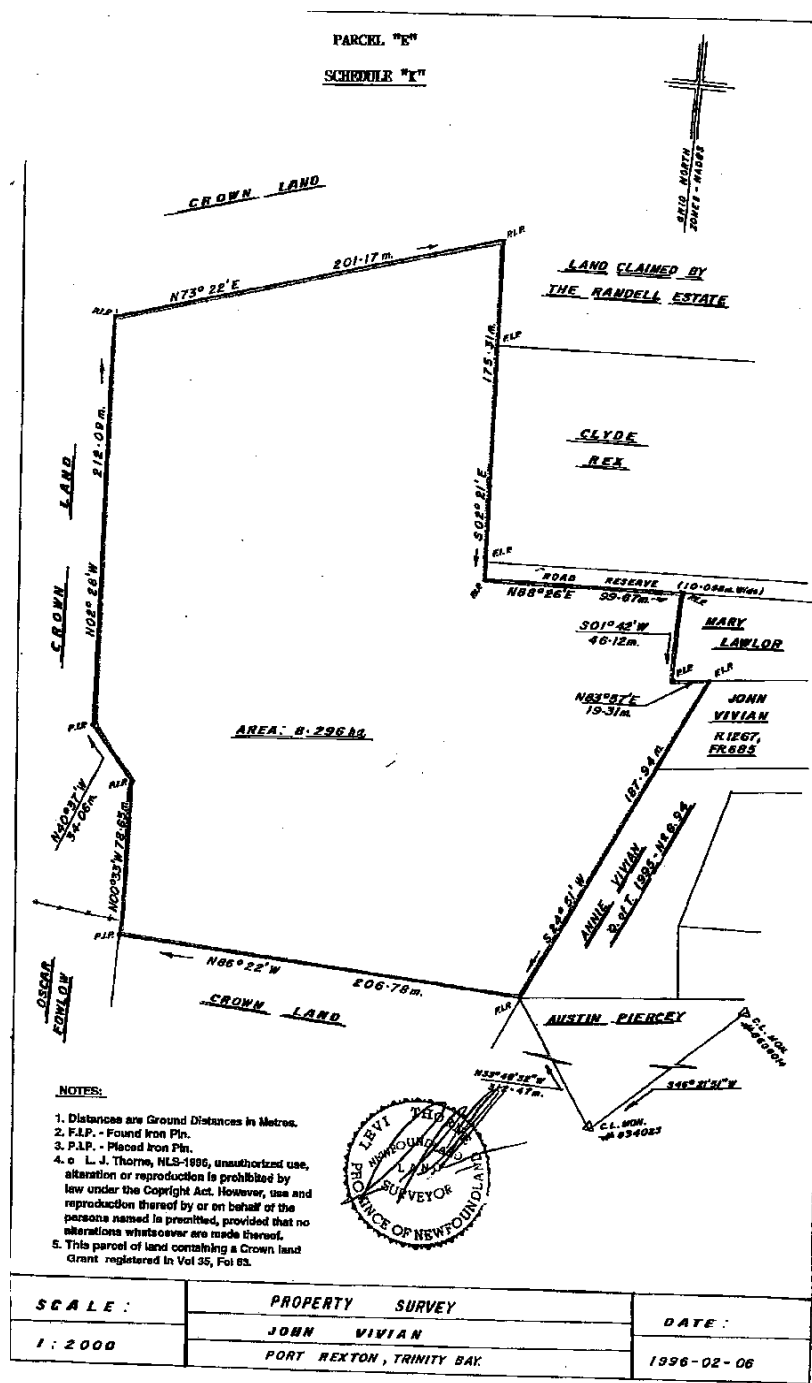
THENCE by property of John Vivian as registered at the Registry of Deeds for Newfoundland Roll 1267 Frame 685 and property of Annie Vivian by Quieting of Titles 1995 No.

G. 94 South twenty-four degrees fifty-one minutes West (S 24° 51' W) one hundred and eighty-seven decimal nine four (187.94) metres, more or less, to the point of beginning.

Containing in all an area of eight decimal two nine six (8.296) Hectares, the same being more particularly described and delineated on the attached plan.

The above described piece or parcel of land contains a Crown Land Grant issued to William Fowlow registered in Volume 35 Folio 63 at the Registry of Crown Grants.

All bearings being referred to Grid North, NAD-83 (C.M. 53° West).



CHANGE OF NAME ACT

C-8 RSN 1990

**NOTICE OF APPLICATION
FOR CHANGE OF NAME**

NOTICE is hereby given that an application will be made to the Minister of Government Services and Lands for a change of name, pursuant to the provisions of the *Change of Name Act*, by me:-

CHARLOTTE JUNE WARFORD

of 36 Garden Road, Deer Lake, in the Province of Newfoundland and Labrador, as follows:

To change my minor unmarried child's name from

COLTON NICHOLAS RAYMOND LEONARD

to

COLTON NICHOLAS RAYMOND WARFORD

DATED this 28th day of November, 2003.

CHARLOTTE WARFORD
(Signature of Applicant)

Dec 12

**NOTICE OF APPLICATION
FOR CHANGE OF NAME**

NOTICE is hereby given that an application will be made to the Minister of Government Services and Lands for a change of name, pursuant to the provisions of the *Change of Name Act*, by me:-

LYNETTE ALLISON REID

of P. O. Box 1195, Station A, 715 Alymer Street, Goose Bay, Province of Newfoundland and Labrador, as follows:

To change my minor unmarried child's name from

JENNIFER ALYSSA DOYLE

to

JENNIFER ALYSSA REID

DATED this 26th day of November, 2003.

LYNETTE REID
(Signature of Applicant)

Dec 12

**NOTICE OF APPLICATION
FOR CHANGE OF NAME**

NOTICE is hereby given that an application will be made to the Minister of Government Services and Lands for a change of name, pursuant to the provisions of the *Change of Name Act*, by me:-

MARK SCOTT POOLE

of P. O. Box 7685, Clarenville, Trinity North, in the Province of Newfoundland and Labrador, as follows:

To change my name from

MARK SCOTT POOLE

to

MARK SCOTT CURRIE

DATED this 28th day of November, 2003.

MARK POOLE
(Signature of Applicant)

Dec 12



THE NEWFOUNDLAND AND LABRADOR GAZETTE

PART II

SUBORDINATE LEGISLATION FILED UNDER THE STATUTES AND SUBORDINATE LEGISLATION ACT

Vol. 78

ST. JOHN'S, FRIDAY, DECEMBER 12, 2003

No. 50

NEWFOUNDLAND AND LABRADOR REGULATIONS

NLR 134/03

NLR 135/03

NLR 136/03



**NEWFOUNDLAND AND LABRADOR
REGULATION 134/03**

Department of Labrador and Aboriginal Affairs Notice (Amendment)
under the
Executive Council Act
(O.C. 2003-585 & O.C. 2003-592)

(Filed December 9, 2003)

Under the authority of section 5 of the *Executive Council Act*, the
Lieutenant-Governor in Council makes the following regulations.

Dated at St. John's, November 25, 2003.

Robert C. Thompson
Clerk of the Executive Council

NOTICE

Analysis

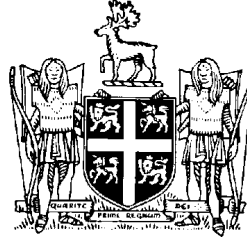
1. S. 2 Amdt.
Definitions

NLR 87/03

1. Paragraph 2(b) of the *Department of Labrador and Aboriginal Affairs Notice* is repealed and the following substituted:

- (b) "minister" means the Minister Responsible for Labrador Affairs or the Minister Responsible for Aboriginal Affairs as the context requires.

©Earl G. Tucker, Queen's Printer



NEWFOUNDLAND AND LABRADOR REGULATION 135/03

Pension Benefits Act Regulations (Amendment)
under the
Pension Benefits Act, 1997
(O.C. 2003-635)

(Filed December 9, 2003)

Under the authority of section 78 of the *Pension Benefits Act, 1997*, the Lieutenant-Governor in Council makes the following regulations.

Dated at St. John's, December 4, 2003.

Robert C. Thompson
Clerk of the Executive Council

REGULATIONS

Analysis

1. S.41 Amdt.
Application to public sector
plans

NLR 114/96
as amended

1. Section 41 of the *Pension Benefits Act Regulations* is amended by adding immediately after subsection (3) the following:

- (4) Notwithstanding subsection (1), the Memorial University Pension Plan is exempt for the period from April 1, 2002 until December 31, 2005 from the requirement that the employer pay an amount under paragraph 12(3)(d) of these regulations.

©Earl G. Tucker, Queen's Printer



NEWFOUNDLAND AND LABRADOR REGULATION 136/03

Burin Municipal Planning Area, 2003
under the
Urban and Rural Planning Act, 2000

(Filed December 9, 2003)

Under the authority of sections 11 and 39 of the *Urban and Rural Planning Act, 2000*, I define the following area as the Burin Municipal Planning Area, 2003.

Dated at St. John's, December 1, 2003.

Jack Byrne
Minister of Municipal
and Provincial Affairs

PLANNING AREA

Beginning at a point on the high water mark of Burin Inlet, that point being the mouth of a small brook and being 522 metres, more or less, south $41^{\circ} 27' 49''$ west of the northern abutment of the bridge on Route 222 spanning the brook flowing from Salt Pond;

Then north $30^{\circ} 52' 46''$ west, 1,193 metres, more or less, to a point;

Then north $51^{\circ} 22'$ west, 1,514 metres, more or less, to a point;

Then west to a point on the Northeastern shoreline of Freshwater Pond;

Then in a generally westerly direction following the northern shoreline of Freshwater Pond to a point on the western shoreline, that point being 60 metres, more or less, northeast of an unnamed brook;

Then west, 6,710 metres, more or less, to a point 100 metres west of Main Brook;

Then north 74° east 7,061 metres, more or less, to a point;

Then north 52° east to a point on the southern shoreline of Tides Brook, that point being 800 metres, more or less, from the centre line of Route 222;

Then in a southeasterly direction along a line parallel to and 800 metres from the centreline of Route 222 to a point in the centre of Southwest Arm and continuing onto the southern extremity of Southwest Arm;

Then north 88° east, 3,850 metres, more or less, to a point;

Then north $59^{\circ} 50' 37''$ east, 3,225 metres, more or less, to a point;

Then south $3^{\circ} 30'$ west, 3,786 metres, more or less, to a point;

Then south $2^{\circ} 00'$ east, 2000 metres, more or less, to a point;

Then south $32^{\circ} 17' 22''$ west, 550 metres, more or less, to a high point;

Then south $77^{\circ} 49'$ east, 2,026 metres, more or less, to a point at the mouth of a small brook on the high water mark of the northwestern extremity of Western Head;

Then following the sinuosities of the shoreline passing Western Head, Port au Bras, Little Burin Harbour, Neck Point, Longcove Point, to a point at the mouth of the river flowing from Salt Pond;

Then crossing the mouth of that river and continuing along the shoreline to the point of beginning, and including all offshore islands west of and including Pardy Island, Burin Island, Cat Island and all offshore islands east of and including Sugar Loaf Island;

All bearings refer to grid north and as with distances given are subject to approximation as delineated on the 1:50000 mapping.

The *Burin Municipal Planning Area*, Consolidated Newfoundland and Labrador Regulation 824/96 is repealed.

This regulation shall be considered to have come into force on January 1, 2002.

©Earl G. Tucker, Queen's Printer

Index

PART I

Change of Name Act — Applications	756
City of St. John's Act — Notice	740
Quieting of Titles Act — Notices	741
Mineral Act — Correction Notice	739
Urban and Rural Planning Act — Notices of Registration	739

PART II

CONTINUING INDEX OF SUBORDINATE LEGISLATION

Title of Act and Subordinate Legislation made thereunder	CNLR or NL Reg.	Amendment	NL Gazette Date & Page No.
Executive Council Act			
Department of Labrador and Aboriginal Affairs Notice (Amdt)	NLR 134/03	Amends NLR 87/03, S.2 Amdt.	Dec. 12/03, p.1241
Pension Benefits Act, 1997			
Pension Benefits Act Regulations (Amdt)	NLR 135/03	Amends NLR 114/96, S.41 Amdt.	Dec. 12/03, p.1243
Urban and Rural Planning Act, 2000			
Burin Municipal Planning Area, 2003 (In force Jan. 1, 2002)	NLR 136/03	R & S CNLR 824/96	Dec. 12/03, p.1245

The Newfoundland and Labrador Gazette is published from the office of Earl G. Tucker, Queen's Printer.

Copy for publication must be received before **Friday, 4:30 p.m.**, seven days before publication, to ensure inclusion in next issue. Advertisements should be typewritten or printed legibly, separate from covering letter. Number of insertions required must be stated and the names of all signing officers typewritten or printed.

Advertising rates are available upon request. Subscription rate for *The Newfoundland and Labrador Gazette* is \$125.00 for 52 weeks plus applicable tax (\$133.75). Weekly issues of \$3.00 per copy, plus tax payable in advance.

All cheques, money orders, etc., should be made payable to THE NEWFOUNDLAND EXCHEQUER ACCOUNT and all correspondence should be addressed to: Office of the Queen's Printer, P. O. Box 8700, Ground Floor, East Block, Confederation Building, St. John's, NL A1B 4J6. Telephone: (709) 729-3649. Fax: (709) 729-1900.

Web site www.gov.nf.ca/queensprinter

Legislative History of the Judicature Act, 1791-1988

Price \$25.00 plus G.S.T.

(Plus \$2.00 postage and handling)

**Place your order by contacting: Office of The Queen's Printer,
Confederation Building, East Block, St. John's, NL. A1B 4J6.**

Telephone: (709) 729-3649 Fax: (709) 729-1900

**Government Information Product
Publication Rate Mail**

G.S.T. # R107442683

All requests for Subscription and Legislation MUST be prepaid.