



# THE NEWFOUNDLAND AND LABRADOR GAZETTE

PART I

PUBLISHED BY AUTHORITY

Vol. 81

ST. JOHN'S, FRIDAY, MAY 19, 2006

No. 20

Date	Number	Company Name	Date	Number	Company Name
<b>CORPORATIONS ACT</b>			2006-04-06	53617	EXTREME RDP ENTERPRISES LTD.
<b>Corporations Act - Section 393</b>			2006-04-06	53618	OCEANGARDEN COVE ESTATES INC.
<b>Local Incorporations</b>			2006-04-06	53609	Lorax Environmental Services Ltd.
<b>For the Month of: April 2006</b>			2006-04-07	53626	53626 NEWFOUNDLAND AND LABRADOR LIMITED
2006-04-03	53600	A & M VARIETY LIMITED	2006-04-07	53623	BARR'D ISLAND ENTERPRISES LTD.
2006-04-04	53608	GENERAL TECHNICAL SERVICES INC.	2006-04-07	53625	JCW ENTERPRISES LTD.
2006-04-04	53599	Horwood's Home & Community Support Services Inc.	2006-04-07	53622	NEW MOTORSPORT INCORPORATED
2006-04-04	53601	ISLE OF DEMONS BOAT CHARTERS INC.	2006-04-07	53624	WESTERN SPORTS AND ENTERTAINMENT INC.
2006-04-04	53604	53604 NEWFOUNDLAND & LABRADOR LTD.	2006-04-10	53636	CIRCUIT BUILDERS LIMITED
2006-04-04	53605	N.J.B. Consulting Inc.	2006-04-10	53634	CORMORANT CONSTRUCTION LTD.
2006-04-04	53606	The Share Foundation Corporation	2006-04-10	53631	DECKER'S AUTO TECH LTD.
2006-04-05	53615	53615 NEWFOUNDLAND AND LABRADOR LIMITED	2006-04-10	53632	FISHERMAN'S DREAM LTD.
2006-04-05	53613	ATLANTIC HEALTHY FOOD INC.	2006-04-10	53630	GRAYLINE COMMERCIAL FLOORING INC.
2006-04-05	53610	LITERACY COALITION OF NEWFOUNDLAND AND LABRADOR INC.	2006-04-10	53635	GRIFFIN'S WHOLESALE LIMITED
2006-04-05	53611	MBB MARKETING INC.	2006-04-10	53633	KOSY DESIGN INC.
2006-04-05	53614	NORTHERN SEAFOODS LIMITED	2006-04-10	53628	Isle aux Morts Community Centre Incorporated
2006-04-05	53612	ROOT FOUR IMAGINATION INC.	2006-04-10	53629	L & M Transport Ltd.
			2006-04-11	53639	EXMOUTH MANOR LTD.
			2006-04-11	53642	GERALD MAHER PLASTER & PAINTING LTD.

THE NEWFOUNDLAND AND LABRADOR  
May 19, 2006

2006-04-11	53638	KING INVESTMENTS INC.	2006-04-25	53711	JOHN HAGGIE PMC INC.
2006-04-12	53645	53645 NEWFOUNDLAND & LABRADOR LIMITED	2006-04-25	53720	NEWFOUNDLAND AND LABRADOR BUILDING AND CONSTRUCTION TRADES COUNCIL REALTY LIMITED
2006-04-12	53644	G.B. INTERNATIONAL CANADA INC.			
2006-04-13	53653	53653 NEWFOUNDLAND AND LABRADOR INC.	2006-04-25	53714	ON THE GO KIDS INC.
2006-04-13	53655	HOUSE'S TRANSPORT LTD.	2006-04-25	53715	PV INVESTMENTS INC.
2006-04-13	53652	PRAXES Medical Inc.	2006-04-25	53718	R. L. CRITCH SERVICES LTD.
2006-04-17	53660	APPALACHIAN VACATIONS INC.	2006-04-25	53719	SIMPLY BETTER DINING INC.
2006-04-17	53662	NEWFOUNDLAND AUTOMOTIVE EQUIPMENT SERVICES INC.	2006-04-25	53698	Holly Holdings Inc.
			2006-04-25	53704	Bonavista Recycling Depot Limited
			2006-04-25	53708	Olivero Enterprises Limited
			2006-04-26	53733	CONSUMERS' HEALTH AWARENESS NETWORK
2006-04-17	53661	TRIMS & MORE INC.			NEWFOUNDLAND AND LABRADOR INCORPORATED
2006-04-17	53658	Double S Contracting Ltd.			COUNTRY ROAD HOLDINGS INC.
2006-04-17	53659	Better Junk Removal Inc.	2006-04-26	53732	
2006-04-18	53667	CODNERS ENTERPRISES INC			
2006-04-18	53668	HANLON'S SERVICE CENTRE LIMITED	2006-04-26	53735	D.J. BROADERS CONSULTING INC.
2006-04-18	53665	The Discount Tire Store Ltd.	2006-04-26	53729	DR. SHANNON BARKER PROFESSIONAL DENTAL CORPORATION
2006-04-19	53680	CHURCHILL SQUARE DENTAL LTD.			
2006-04-19	53676	DR. MARJORIE MACDONALD (2006) PROFESSIONAL DENTAL CORPORATION	2006-04-26	53734	JL DESIGN SERVICES LTD.
			2006-04-26	53741	NOGGIN COVE NEW DEV. COMMITTEE INC.
2006-04-19	53677	DR. MHM IRFAN (2006) PROFESSIONAL MEDICAL CORPORATION	2006-04-26	53730	SMART TAXIS ENCOURAGING RESPECT (STEER) INC.
2006-04-19	53681	JIM'S STONERWORKS LIMITED	2006-04-26	53728	SOLAR CONTRACTING INC.
2006-04-19	53678	MARY COOPER CONSULTING LIMITED	2006-04-26	53731	SPRINGDALE CHAMBER OF COMMERCE INC.
2006-04-19	53679	SQUIRES PROPERTIES, INC.	2006-04-26	53721	C & E AUTOMOTIVE LTD.
2006-04-19	53666	RASS Ent.Inc	2006-04-26	53722	Ryan & Kean Construction Ltd.
2006-04-19	53673	Verge's Renovations Inc.	2006-04-26	53723	Valley Hill Farms Ltd.
2006-04-19	53674	Sit Down Pond Camp Incorporated	2006-04-26	53727	SHVS ENTERPRISES LTD
2006-04-19	53675	BNR Enterprises & Construction Inc.	2006-04-27	53750	ATLANTIC AUTO SALES INCORPORATED
2006-04-20	53689	MARLO ENTERPRISES LIMITED	2006-04-27	53759	ATLANTIC PLUMBING & HEATING (2006) LTD.
2006-04-20	53691	NICTECH ELECTRONICS LTD.	2006-04-27	53752	C AND B CONTRACTING LTD.
2006-04-20	53690	THORNHILL INSPECTION SERVICES INC	2006-04-27	53747	CAMPUS VIDEO INC.
			2006-04-27	53745	GREG GARDNER CONSTRUCTION LTD.
2006-04-20	53688	VERSITEC SERVICES INC.			
2006-04-20	53686	Misty River Cottages Ltd	2006-04-27	53743	OCEAN DEVELOPMENTS INC.
2006-04-21	53702	ABLE BODIES INCORPORATED	2006-04-27	53749	ROCHE DESIGN INC.
			2006-04-27	53746	ROOSEVELT PROPERTIES LIMITED
2006-04-21	53706	COOMBS' PUB LTD.			
2006-04-21	53701	EASTERN FISHING LTD.	2006-04-27	53748	T.L.C. DOG GROOMING LTD.
2006-04-21	53705	FRESHWATER LAUNDRY INC.	2006-04-27	53744	TRAINOR'S HOLDINGS LTD.
2006-04-21	53703	HEPING JI INC.	2006-04-27	53742	T&T Electric Ltd.
2006-04-21	53699	HI CONTRACTING INC.	2006-04-28	53756	APPLIED BEHAVIOURAL AND DEVELOPMENTAL PRACTITIONERS OF NEWFOUNDLAND AND LABRADOR INC.
2006-04-21	53707	J.L. GUINEY ENGINEERING LIMITED			
2006-04-21	53700	SAMBEN HOLDINGS LIMITED			
2006-04-21	53687	Bennett's refrigeration Ltd.			
2006-04-21	53694	ISLAND INVESTIGATIVE SERVICES (2006) INC.	2006-04-28	53754	EASTERN ROOF AND FLOOR TRUSS MANUFACTURING INC.
2006-04-21	53695	Silver Sands Restaruant and Lounge Incorporated	2006-04-28	53753	FOUNTAIN HOLDINGS INC.
			2006-04-28	53755	H. LYNN HOLDINGS LIMITED
2006-04-24	53697	Avalon Offshore Marine Base Inc.	2006-04-28	53751	NFLD & LAB FREEZER ORDER LTD
2006-04-25	53716	53716 NEWFOUNDLAND AND LABRADOR LIMITED			
2006-04-25	53713	ACT ONE INC.			
2006-04-25	53712	ATLANTIC APPAREL INC.			
2006-04-25	53717	EXPORT SAND & GRAVEL INC.			

Total Incorporations: 115

THE NEWFOUNDLAND AND LABRADOR  
May 19, 2006

**Corporations Act - Section 331**

**Local Revivals**

**For the Month of: April 2006**

Date	Number	Company Name			
			2006-04-17	52952	Society of Laboratory Technologists Inc.
			2006-04-17	36203	BRIDPORT GROUP INC.
					Newfoundland and Labrador Outfitters Association Inc.
2006-04-04	29176	Vinland Petroleum Inc.	2006-04-17	2654	PALMER'S LIMITED
2006-04-06	31189	C.B.S. AMATEUR SPORTS FUNDRAISING ASSOCIATION INCORPORATED	2006-04-17	35288	X-POSURE INTERNATIONAL INC.
2006-04-06	33044	SHANE MUSIC INC.	2006-04-18	31519	BACCALIEU TRAIL HERITAGE CORPORATION
2006-04-07	31594	L. M. F. Limited	2006-04-18	51284	ELITE BEVERAGES INC.
2006-04-07	28412	VANITY FASHIONS LIMITED	2006-04-18	4190	H.K.G.LIMITED
2006-04-17	35288	X-POSURE INTERNATIONAL INC.	2006-04-18	52379	TNT INSPECTION SERVICES INC.
2006-04-18	31519	BACCALIEU TRAIL HERITAGE CORPORATION	2006-04-19	25427	10084 Newfoundland Limited
2006-04-25	33883	Commercial Square Enterprises Limited	2006-04-19	53051	DR. ANDREA REID PROFESSIONAL MEDICAL CORPORATION
			2006-04-19	51059	DR. JEEWANI IRFAN PROFESSIONAL MEDICAL CORPORATION
Total Revivals: 8			2006-04-19	50685	STELLA MARIS INVESTMENTS INC.

**Corporations Act - Section 296 and 393**

**Local Continuances**

**For the Month of: April 2006**

Date	Number	Company Name			
2006-04-18	53669	TALON INSPECTION INC.	2006-04-20	48436	BEAVER BROOK ANTIMONY MINE INC.
			2006-04-20	48436	BEAVER BROOK ANTIMONY MINE INC.
			2006-04-20	49265	Natural Healing Centre Inc.
Total Continuances: 1			2006-04-25	48728	EBB Healthy Living Inc.
			2006-04-25	48196	PONDEROSA HOLDINGS LIMITED

**Corporations Act - Section 286**

**Local Amendments**

**For the Month of: April 2006**

Date	Number	Company Name			
2006-04-03	41343	41343 NEWFOUNDLAND AND LABRADOR LTD.	2006-04-25	31323	Royal Birch Enterprises Ltd.
2006-04-03	42674	LAKE SERVICES INC.	2006-04-25	49665	ST. BONAVENTURE'S COLLEGE ENDOWMENT INC.
2006-04-04	48143	APTX CONSULTING INC.	2006-04-25	31323	SUTHERLAND ENTERPRISES LIMITED
2006-04-04	44320	R. W. TILLER STRUCTURAL ENGINEERING INC.	2006-04-26	43199	10886 NEWFOUNDLAND INC.
2006-04-04	40665	Sutherland Investments Inc.	2006-04-26	50793	BLUE ORCHARD DEVELOPERS INC.
2006-04-05	29697	Merit Contractors' Association of Newfoundland and Labrador Inc.	2006-04-26	43221	Enviro-Shred Inc.
2006-04-06	37313	S I PROPERTIES LIMITED	2006-04-26	43263	Great Big Storage Ltd.
2006-04-06	38776	Sip'kop Mi'kmaw Band Council, Inc.	2006-04-26	20156	WILFRED LEWIS & SONS LIMITED
2006-04-07	52993	STACY & DUANE HOLDINGS INC.	2006-04-27	16954	ENE-R-OUND LIMITED
2006-04-07	4937	THEO HAMELMANN LIMITED	2006-04-27	45005	Homestead Inspections Inc.
2006-04-10	49041	Global Marine Group Inc.	2006-04-27	17495	Power's Ambulance Service Limited
2006-04-10	42045	Zebit Fish Harvesters Inc.	2006-04-28	38381	JOHN HEARN ARCHITECT INCORPORATED
2006-04-11	27036	A & E FISHERIES LTD.	2006-04-28	41934	SUBWAY @ RANDOM INC.
2006-04-11	51511	DEARINGS CONSTRUCTION LTD	Total Amendments: 51		
2006-04-11	46714	EXECUTIVE TRAVEL LIMITED			
2006-04-11	29869	GREEN BAY FOOD BANK INC.			
2006-04-11	8958	JAMES HORNELL BOYS & GIRLS CLUB INC.			
2006-04-12	38295	DOMINION TRADING LIMITED			
2006-04-12	18128	NEW VALLEY DRILLING COMPANY LIMITED			
2006-04-13	50779	DR. LYNETTE POWER PMC INC.			
2006-04-13	28280	Newfoundland and Labrador			

THE NEWFOUNDLAND AND LABRADOR  
May 19, 2006

---

**Corporations Act - Section 337**

**Local Intents to Dissolve**

**For the Month of: April 2006**

Date	Number	Company Name
2006-04-12	48123	VENTURE FITNESS CENTRE INC.

Total Intents to Dissolve: 1

**Corporations Act - Section 335**

**Local Dissolutions**

**For the Month of: April 2006**

Date	Number	Company Name
2006-04-03	45927	LAWLORS AUTOWORKS LTD
2006-04-04	44936	Tri-City Electrical Limited
2006-04-05	16083	Young's Holdings Limited
2006-04-06	45161	11045 NEWFOUNDLAND LTD.
2006-04-06	5677	CLYDE L. DOUGLAS & SON, LIMITED
2006-04-10	5930	Brake's Auto Repairs Limited
2006-04-10	33619	Futurity Investment Corporation
2006-04-10	38209	GENINA HOLDINGS LTD.
2006-04-12	38529	K & T CRAFT SUPPLIES LIMITED
2006-04-12	33526	MATTHEWS & SON CONSTRUCTION INC.
2006-04-18	38618	Northeast Mussels Inc.
2006-04-18	46128	TEA BY THE SEA, INC.
2006-04-19	51292	BRANCH RENEWAL CORPORATION
2006-04-20	35684	Coastal Habitat Assessment Research and Technology Inc.
2006-04-25	47950	Dundee Investments Limited
2006-04-25	42905	J.R. AIRCRAFT SERVICES LTD
2006-04-25	47962	N.L. RECOVERIES INC.
2006-04-25	43689	WCP BLACKTOP PAVING LIMITED
2006-04-26	35898	BER-GEO ENTERPRISES LTD.
2006-04-28	41649	Dorwill Enterprises Limited
2006-04-28	31758	R & J Commercial Equipment & Cleaning Supplies Limited

Total Dissolutions: 21

**Corporations Act - Section 299**

**Local Discontinuances**

**For the Month of: April 2006**

Date	Number	Company Name
2006-04-10	52317	BARRY GROUP INC.
2006-04-10	44588	BGI Atlantic Inc.
2006-04-10	50049	NUTAN FURS INC.
2006-04-10	49156	PELAGICS FISHERIES LIMITED
2006-04-27	23067	CORETEC Incorporated

Total Discontinuances: 5

**Corporations Act - Section 294**

**Local Amalgamations**

**For the Month of: April 2006**

Date	Number	Company Name
2006-04-01	53595	C. V. ENTERPRISES LIMITED
From:	53436	53436 NEWFOUNDLAND AND LABRADOR LIMITED
	41526	F & G Fisheries Limited
2006-04-19	53682	T & C ENTERPRISES LTD.
From:	34503	Ford Ward Ltd.
	52894	T & C ENTERPRISES LTD.
2006-04-20	53696	MAJOR'S LOGGING LIMITED
From:	18787	Darcy's Trucking Co. Limited
	16551	Major's Logging Limited
2006-04-30	53758	DEER LAKE HOLDINGS LIMITED
From:	51929	51929 NEWFOUNDLAND AND LABRADOR LIMITED
	17508	Deer Lake Holdings Limited
	40264	Global Marketing Inc.

Total Amalgamations: 4

**Corporations Act - Section 286**

**Local Name Changes**

**For the Month of: April 2006**

Number	Company Name
52993	STACY & DUANE HOLDINGS INC.
2006-04-07	From: Vertigo Enterprises Inc.
52952	BRIDPORT GROUP INC.
2006-04-17	From: FINANCIAL PLANNING CONSULTANTS INC.
52379	TNT INSPECTION SERVICES INC.
2006-04-18	From: 52379 NEWFOUNDLAND & LABRADOR INC
51059	DR. JEEWANI IRFAN PROFESSIONAL MEDICAL CORPORATION
2006-04-19	From: DR. M. H. IRFAN PROFESSIONAL MEDICAL CORPORATION
50793	BLUE ORCHARD DEVELOPERS INC.
2006-04-26	From: 50793 NEWFOUNDLAND AND LABRADOR INC.

Total Name Changes: 5

THE NEWFOUNDLAND AND LABRADOR  
May 19, 2006

**Corporations Act - Section 443  
Extra-Provincial Registrations  
For the Month of: April 2006**

Date	Number	Company Name
2006-04-06	53619	CALYON FINANCIAL CANADA INC.
2006-04-06	53620	FHTM CANADA INC.
2006-04-06	53621	L'IMMOBILIERE GUYANAISE
2006-04-07	53627	PORTFOLIO MANAGEMENT CORPORATION
2006-04-10	53637	BURDOCK ENTERPRISES INC.
2006-04-11	53641	CLAIRVEST GENERAL PARTNER III INC.
2006-04-11	53640	CLAIRVEST GP III INC.
2006-04-11	53650	FRONTIERALT OASIS FUNDS MANAGEMENT INC.
2006-04-11	53648	GESTION FIERA CAPITAL INC. FIERA CAPITAL MANAGEMENT INC.
2006-04-11	53649	PATHWAY MINING 2006 INC.
2006-04-11	53647	RETURN ON INNOVATION MANAGEMENT LTD.
2006-04-11	53651	THE FOREMOST UNDERWRITERS (2002) LIMITED
2006-04-12	53646	OPTIC COMMUNICATIONS CANADA INC.
2006-04-13	53654	LEASE FINANCE GROUP CANADA ULC
2006-04-13	53656	VILLAGE SHOPPING CENTRE (NL) INC.
2006-04-17	53663	SUSTAINABLE HOUSING AND EDUCATION CONSULTANTS INC.
2006-04-18	53672	DR. CATHERINE ALDERDICE, MEDICINE PROFESSIONAL CORPORATION
2006-04-18	53670	SATELLITE CONNECTIONS INC.
2006-04-19	53683	TEKOIL & GAS CORPORATION
2006-04-20	53693	INUKSHUK WIRELESS INC. INUKSHUK SANS FIL INC.
2006-04-20	53692	LENSCRAFTERS INTERNATIONAL, INC.
2006-04-25	53709	1514927 ONTARIO LTD.
2006-04-25	53710	BEACON UNDERWRITING LTD.
2006-04-26	53736	AGS ENERGY EQUITIES 2006 LTD.
2006-04-26	53740	CONVERGYS NEW BRUNSIWCK, INC.
2006-04-26	53739	ELECTROLUX CANADA CORP.
2006-04-26	53738	TC LAND GP INC.
2006-04-26	53737	TC LAND HOLDINGS CORP

Total Registrations: 28

**Corporations Act - Section 451  
Extra-Provincial Name Changes  
For the Month of: April 2006**

Number	Company Name
53152	CONVÉQUIPE CANADA INC. CONVERTEAM CANADA INC.
2006-04-04	From: ALSTOM CONVERSION D'ÉNERGIE CANADA INC.-ALSTOM POWER CONVERSION CANADA INC.
51430	GUNNEBO CANADA INC.
2006-04-05	From: GUNNEBO SECURITY INC. / SECURITE GUNNEBO INC.

Total Name Changes: 2

**Corporations Act - Section 294  
Extra-Provincial Registrations for  
Amalgamation**

**For the Month of: April 2006**

Date	Number	Company Name
2006-04-03	53603	G4S CASH SERVICES (CANADA) LTD.
		G4S SERVICE VALEURS (CANADA) LTÉE
From:	3567D	G4S CASH SERVICES (CANADA) LTD.
		G4S SERVICE VALEURS (CANADA) LTÉE
2006-04-03	53602	RHI CANADA INC.
From:	6727F	RHI CANADA INC.
2006-04-07	53724	THE MANUFACTURERS LIFE INSURANCE COMPANY LA COMPAGNIE D'ASSURANCE-VIE MANUFACTURERS
From:	355I	MFC Insurance Company Limited Compagnie d'assurance MFC limitee Commerciale du Canada
	493I	The Manufacturers Life Insurance Company La Compagnie d'Assurance-Vie Manufacturers
2006-04-11	53643	MOORE WALLACE CORPORATION MOORE WALLACE INCORPORATED
From:	3775D	
2006-04-13	53657	NORAMPAC INC.
From:	3217D	NORAMPAC INC.

2006-04-17 53664 THOMSON CANADA LIMITED/THOMSON CANADA LIMITEE  
From: 51185 THOMSON CANADA LIMITED/THOMSON CANADA LIMITEE

2006-04-19 53685 ZELLERS INC.  
From: 3518AD 3859681 Canada Inc.  
2538D ZELLERS INC.

2006-04-25 53725 LOBLAW PROPERTIES LIMITED/PROPRIÉTÉS LOBLAW LIMITEE  
From: 6473F LOBLAW PROPERTIES LIMITED PROPRIETES LOBLAW LIMITEE

2006-04-26 53757 ASSURANT SERVICES CANADA INC./SERVICES ASSURANT CANADA INC.  
From: 4366F ASSURANT SERVICES CANADA INC./SERVICES ASSURANT CANADA INC.

Total Registrations for Amalgamation: 9

REGISTRAR OF COMPANIES  
Doug Laing

May 19

---

---

**MUNICIPALITIES ACT**

**TOWN OF PARADISE  
NOTICE OF AMENDMENTS TO THE TOWN OF  
PARADISE FENCE REGULATIONS 2005**

The Town of Paradise has amended the Town of Paradise Fence Regulations 2005, specifically Sections 12, 13 and 16 of the said Regulations. The purpose of these amendments is to permit the construction of fences on a corner lot between the property boundary on the flanking street and the wall of the dwelling and to permit the construction of fences, in the front yard, where such fences about a public path, park or right of way. Amendments # 12 and # 13 were adopted by council on May 2, 2006 and Amendment # 16 was adopted by Council on May 17, 2005. These amendments were made under the provisions of Section 414 (2) (hh) of the *Municipalities Act*, SNL 1999 and may be cited as Amendment 2005-01 (section 16) and Amendment 2006 -01 (sections 12 and 13) of the Town of Paradise Fence Regulations 2005. These Amendments come into immediate effect upon the advertisement of this Notice.

Copies of the Town of Paradise Fence Regulations 2005 and these amendments may be obtained from the Town Hall at 1655 Topsail Road.

TOWN OF PARADISE  
Town Clerk

May 19

**LANDS ACT**

**NOTICE OF INTENT**

**LANDS ACT, Chapter 36, S.N. 1991**

Notice is hereby given that Blue Water Holdings Limited of St. John's, NL intends to apply to the Department of Environment and Conservation, two months from the publication of this Notice, to acquire title, pursuant to Section 7(2)(a) of the said Act, to that piece of Crown Land situated within fifteen (15) metres of the waters of Murray's Pond and Murray's Pond Brook in the Electoral District of Portugal Cove-St. Phillips for the purpose of development and being more particularly described as follows:

**Schedule "A"**

R. Young NLS

May 2006

All that piece or parcel of land situate and being to the north of Portugal Cove Road in the town of Portugal Cove-St. Phillips in the Province of Newfoundland & Labrador being bounded and abuted as follows, that is to say beginning at a point said point having coordinates of north 5,275,014.208 and east 317,926.865 thence following the sinuosities of the high water mark along the eastern shoreline of Murray's Pond north 49 degrees, 08 minutes, 59 seconds east, 96.596 m., thence north 42 degrees, 17 minutes, 50 seconds east, 75.629 m., thence north 04 degrees, 55 minutes, 12 seconds east, 29.839 m., thence south 82 degrees, 57 minutes, 38 seconds east, 77.656 m., thence north 42 degrees, 08 minutes, 47 seconds east, 69.772 m., thence by lands of the Estate of H.A. Russell, vol. 201, fol. 938, north 88 degrees 01 minutes 16 seconds east 57.816 m., thence by lands of J.C. Murphy vol. 400, fol. 476 and Alex Garland, roll 115, frame 1704, south 87 degrees 47 minutes 00 seconds east 39.400 m., thence following the sinuosities along the western high water line of Butlers Pond, 27.61 m. with a straight line bearing and distance of south 11 degrees, 26 minutes, 33 seconds west, 26.188 m., thence by lands of Blue Water Holdings Limited, Registration No. 117696, south 84 degrees, 36 minutes, 39 seconds west, 53.235 m., thence south 72 degrees, 07 minutes, 17 seconds west, 32.073 m., thence north 79 degrees, 33 minutes, 45 seconds west, 28.283 m., thence south 39 degrees, 47 minutes, 44 seconds west, 30.469 m., thence north 82 degrees, 57 minutes, 38 seconds west, 77.672 m., thence south 04 degrees, 55 minutes, 12 seconds west, 29.861 m., thence south 42 degrees, 21 minutes, 03 seconds west, 76.820 m., thence south 49 degrees, 38 minutes, 00 seconds west, 91.044 m., thence following the revised boundaries of the Newfoundland Game Fish Protection Society Ltd. North 71 degrees, 43 minutes, 26 seconds west, 10.825 m., to the principal point of beginning. The above described parcel contains in all an area of 6011 square meters. All bearings being referred to Grid North NAD 83.

Any person wishing to object to the application must file the objection, in writing, within one month from the publication of this notice, with reasons for it, to the

Minister of Environment and Conservation, c/o the nearest  
Regional Lands Office

TOWN OF FLATROCK  
Rita Farrell, Town Clerk

For further information regarding the proposed  
application, please contact R. Wayne Bruce, Telephone  
(709) 722-4270.

May 19

---

---

**URBAN AND RURAL PLANNING ACT**

**NOTICE OF REGISTRATION  
ST. JOHN'S DEVELOPMENT REGULATIONS  
AMENDMENT NO. 372, 2006**

Take notice that the St. John's Development Regulations  
Amendment Number 372, 2006, adopted on the 1<sup>st</sup> day of  
May, 2006, has been registered by the Minister of  
Municipal Affairs.

In general terms, the purpose of St. John's Development  
Regulations Amendment Number 372, 2006 is to allow for  
the possibility of reducing the standard for the minimum  
required side-yard (inside lot) setback of buildings in the  
commercial Industrial (CI) Zone from 3 metres to 2 metres,  
in circumstances when Council feels it is appropriate.

The St. John's Development Regulations Amendment  
Number 372, 2006 comes into effect on the day that this  
notice is published in *The Newfoundland and Labrador  
Gazette*. Anyone who wishes to inspect a copy of the  
amendment may do so at the Department of Planning, 3<sup>rd</sup>  
Floor, St. John's City Hall during regular business hours  
(Monday through Friday 9:00 a.m. to 4:30 p.m.)

PLANNING DEPARTMENT  
Cliff Johnston

May 19

---

---

**NOTICE OF REGISTRATION  
TOWN OF FLATROCK  
DEVELOPMENT REGULATIONS AMENDMENT  
No. 12, 2006**

Take notice that the Town of Flatrock Development  
Regulations Amendment No. 12, 2006 approved on the  
27<sup>th</sup> day of April, 2006, has been registered by the  
Minister of Municipal Affairs.

In general terms, the purpose of Development Regulations  
Amendment No. 12, 2006, is to re-zone a portion of land  
from Residential Subdivision Area (RSA) to Residential  
Rural (RR). The Amendment is required to allow for a  
eighteen (18) lot residential subdivision to be located north  
off Red Head Road.

The Town of Flatrock Development Regulations  
Amendment No. 12, 2006, comes into effect on the day that  
this notice is published in *The Newfoundland and Labrador  
Gazette*. Anyone who wishes to inspect a copy of the Town  
of Flatrock Development Regulations Amendment No. 12,  
2006, may do so at the Town Office, Flatrock, during  
normal working hours.

May 19

---

---

**NOTICE OF REGISTRATION  
TOWN OF ST. ANTHONY MUNICIPAL PLAN AND  
DEVELOPMENT REGULATIONS**

Take notice that the Town of St. Anthony Municipal Plan  
and Development Regulations, adopted on the 13<sup>th</sup> day of  
December, 2005, (as amended) and approved on the 14<sup>th</sup>  
day of February, 2006, has been registered by the Minister  
of Municipal Affairs.

The Town of St. Anthony Municipal Plan and  
Development Regulations come into effect on the day that  
this notice is published in *The Newfoundland and Labrador  
Gazette*. Anyone who wishes to inspect a copy of the Town  
of St. Anthony Municipal Plan and Development  
Regulations may do so at the Town Office, Monday-Friday  
during normal working hours.

TOWN OF ST ANTHONY  
Curtis Richards

May 19

---

---

**QUIETING OF TITLES ACT**

**2006 05T 0105  
IN THE SUPREME COURT OF NEWFOUNDLAND  
AND LABRADOR TRIAL DIVISION**

NOTICE OF APPLICATION UNDER THE *QUIETING  
OF TITLES ACT*, cQ-3, OF THE REVISED STATUTES  
OF NEWFOUNDLAND AND LABRADOR

NOTICE IS HEREBY given to all parties that Kevin  
Walters and Donna Walters, of the Town of Port Rexton, in  
the District of Trinity North, in the Province of  
Newfoundland and Labrador, has applied to the Supreme  
Court, Trial Division, Gander, to have title to all that piece  
or parcel of property situate at Port Rexton, in the Province  
of Newfoundland and Labrador, which property is more  
particularly described in Schedules "A", "C", and "E"  
hereto annexed and shown in Schedules "B", "D" and "F"  
hereto annexed.

ALL BEARINGS aforementioned, for which Kevin  
Walters and Donna Walters claim to be the owners  
investigated and for a Declaration that they are the absolute  
owners in fee simple in possession and the said Kevin  
Walters and Donna Walters have been ordered to public  
Notice of Application as required by the above named Act.

All persons having title adverse to the said title claimed by  
the said Kevin Walters and Donna Walters shall file in the  
Registry of the Supreme Court of Newfoundland and  
Labrador, Trial Division, Gander, particulars of such  
adverse claim and serve the same together with an  
Affidavit verifying same on the undersigned Solicitors for  
the Petitioners on or before the 5<sup>th</sup> day of June, 2006, after  
which date no party having any claim shall be permitted to

file the same or to be heard except by special leave of the Court and subject to such conditions as the Court may deem just.

All such adverse claims shall be investigated then in such manner as the Supreme Court of Newfoundland and Labrador, Trial Division, Gander, may direct.

DATED AT Clarenville, in the Province of Newfoundland and Labrador, this 8<sup>th</sup> day of May, 2006.

MILLS, HUSSEY & PITTMAN  
Solicitors for the Applicants  
PER: Corwin Mills, Q.C.

ADDRESS FOR SERVICE  
111 Manitoba Drive  
Suite 201  
Clarenville, NL A5A 1K2

**PARCEL A**  
**Kevin and Donna Walters**  
**Port Rexton, NL**

**SCHEDULE 'A'**

ALL THAT piece or parcel of land situate and being in the Community of Port Rexton, in the Electoral District of Trinity North abutted and bounded as follows:

THAT IS TO SAY: Beginning at a point on the eastern limit of formerly Canadian National Right-of-Way now Crown Land (15.24 metres wide), the said point having coordinates N 5 360 149.02 metres and E 280 196.76 metres of the Three Degree Modified Transverse Mercator Projection (NAD-83) for the Province of Newfoundland and Labrador:

THENCE by property of Philip Baldwin north eighty-six degrees nineteen minutes fifty-five seconds east (N 86-19-55 E) eight decimal six nine (8.69) metres, south eleven degrees fifty-six minutes ten seconds east (S11-56-10 E) seventy-six decimal nine seven (76.97) metres, south three degrees ten minutes forty-five seconds west (S 3-10-45 W) sixty-six decimal five three (66.53) metres, north seventy-five degrees twenty-three minutes ten seconds west (N 75-23-10 W) twenty-three decimal one eight (23.18) metres;

THENCE by property of Kevin and Donna Walters north seventy degrees forty minutes forty seconds west (N 70-40-40 W) thirty-one decimal zero eight (31.08) metres;

THENCE along the southeastern limit of a Right-of-Way (3.81 metres wide) north twenty-five degrees zero two minutes fifty seconds east (N 25-02-50 E) six decimal three four (6.34) metres;

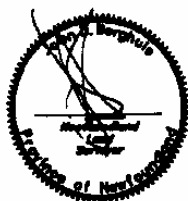
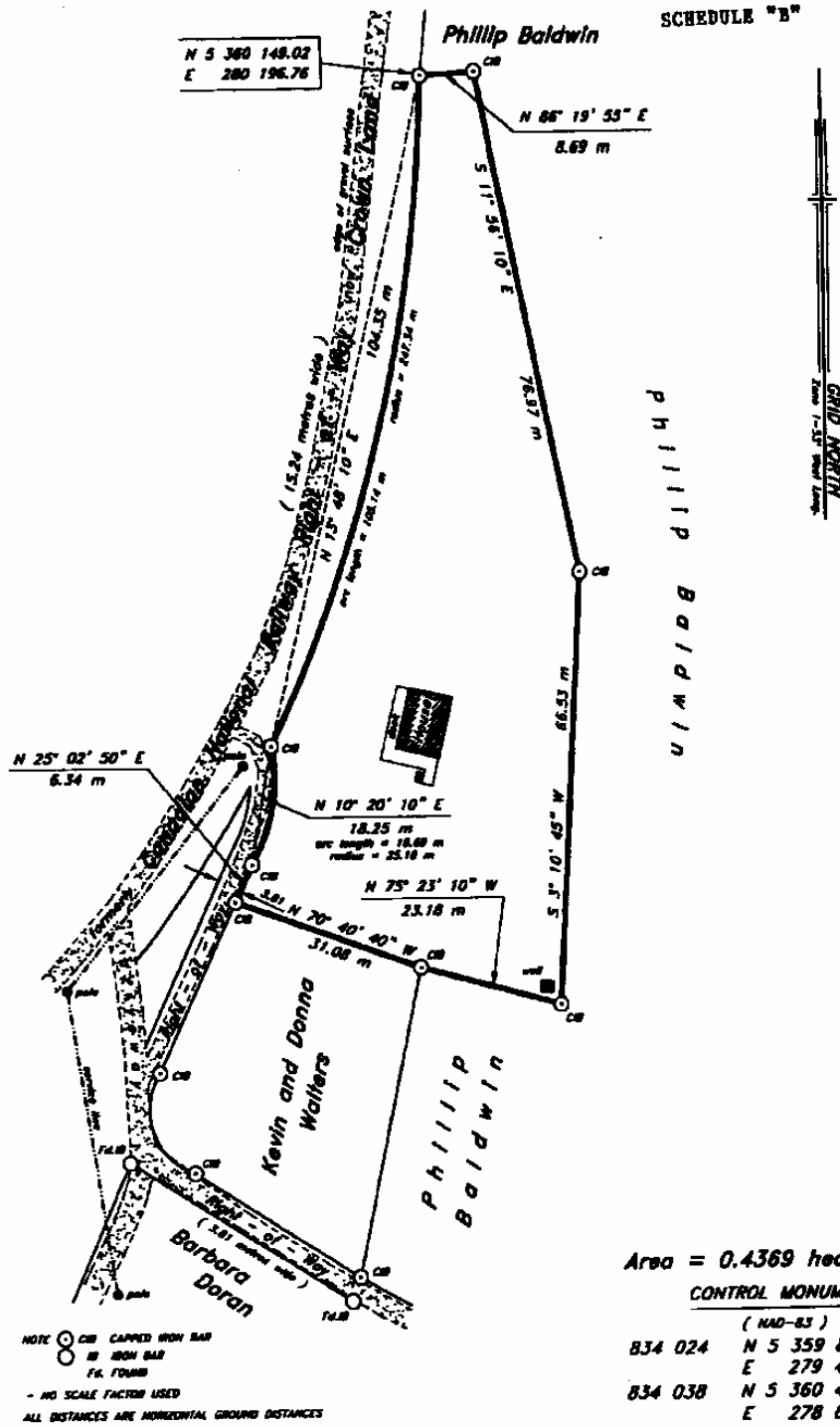
THENCE along the southeastern limit of a Right-of-Way (3.81 metres wide) along the arc of a curve having a radius of twenty-five decimal one eight (25.18) metres to a point, the said point being distant eighteen decimal two five (18.25) metres as measured on a bearing of north ten

degrees twenty minutes ten seconds east (N 10-20-10 E) from the last mentioned point;

THENCE along the said eastern limit of formerly Canadian National Railway Right-of-Way now Crown Land along the arc of a curve having a radius of two hundred and forty-seven decimal three four (247.34) metres to a point, the said point being distant one hundred and four decimal three five (104.35) metres as measured on a bearing of north thirteen degrees forty-eight minutes ten seconds east (N13-48-10E) for the last mentioned point, more or less to the point of beginning and containing an area of 0.4369 hectares.

All bearings refer to the above mentioned Projection.





**(((CONTROL SURVEYS LTD.)))**  
**NEWFOUNDLAND LAND SURVEYORS**  
 373C MEMORIAL DRIVE, 55A 120 - Tel: (709) 480-5688  
 Clarenville Newfoundland

**SURVEY ON BEHALF OF**  
**KEVIN AND DONNA WALTERS**  
 Port Rexton Newfoundland

SCALE: 1 : 750	JOB No.: 2006-108
DATE: January 20, 2006	SURVEY BY: J.D.B.

**PARCEL B**  
**Kevin and Donna Walters**  
**Port Rexton, NL**  
**SCHEDULE 'C'**

ALL THAT piece or parcel of land situate and being in the Community of Port Rexton, in the Electoral District of Trinity North abutted and bounded as follows:

THAT IS TO SAY: Beginning at a point on the southeastern limit of a Right-of-Way (3.81 metres wide), the said point having coordinates N 5 360 023.16 metres and E 280 165.90 metres of the Three Degree Modified Transverse Mercator Projection (NAD-83) for the Province of Newfoundland and Labrador;

THENCE by property of Kevin and Donna Walters south seventy degrees forty minutes forty seconds east (S 70-40-40 E) thirty-one decimal zero eight (31.08) metres;

THENCE by property of Phillip Baldwin south twelve degrees fourteen minutes zero zero seconds west (S 12-14-

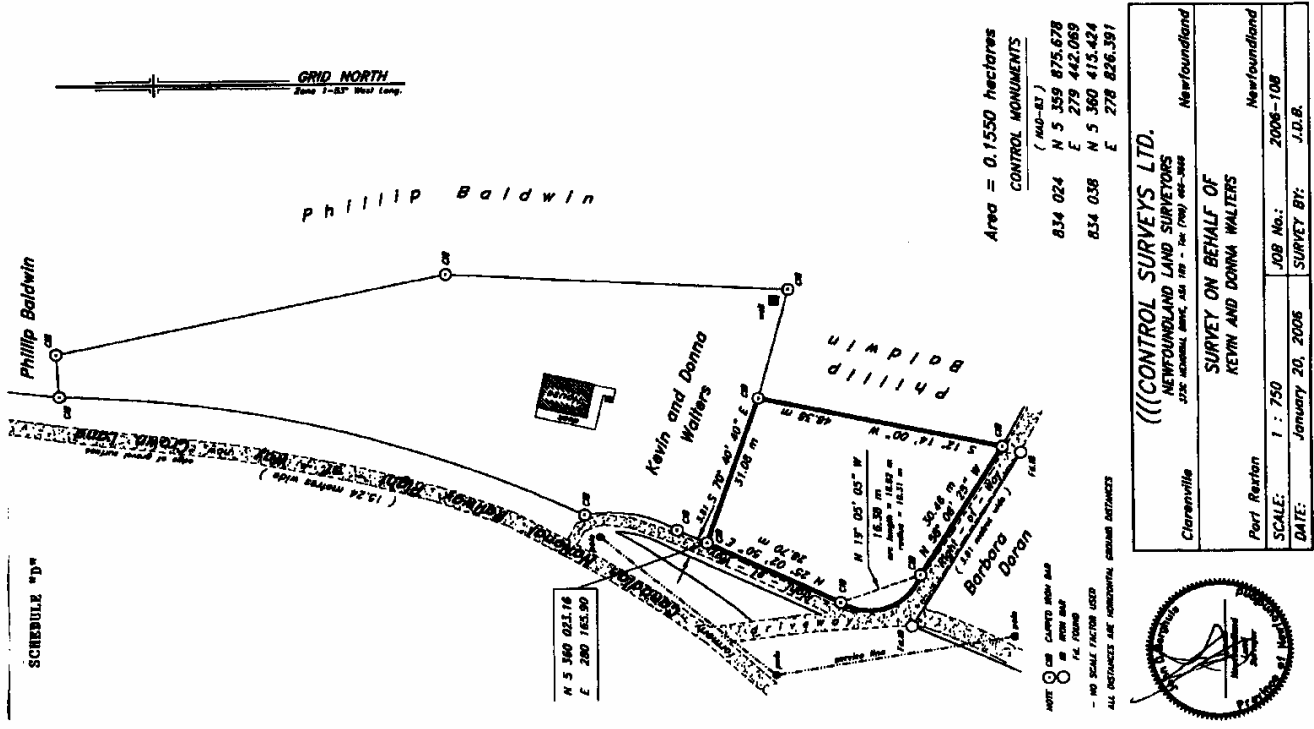
00 W) forty-eight decimal three eight (48.38) metres;

THENCE along the northeastern limit of a Right-of-Way (3.81 metres wide) north fifty-eight degrees zero eight minutes twenty-five seconds west (N 58-08-25 W) thirty decimal four six (30.46) metres;

THENCE along the northeastern limit of a Right-of-Way (3.81 metres wide) along the arc of a curve having a radius of ten decimal three one (10.31) metres to a point, the said point being distant sixteen decimal three eight (16.38) metres as measured on a bearing of north nineteen degrees zero five minutes zero five seconds west (N 19-05-05 W) from the last mentioned point;

THENCE along the southeastern limit of a Right-of-Way (3.81 metres wide) north twenty-five degrees zero two minutes fifty seconds east (N 25-02-50 E) twenty-eight decimal seven zero (28.70) metres, more or less to the point of beginning and containing an area of 0.1550 hectares.

All bearings refer to the above mentioned Projection.



**PARCEL C**  
**Kevin and Donna Walters**  
**Port Rexton, NL**  
**SCHEDULE 'E'**

ALL THAT piece or parcel of land situate and being in the Community of Port Rexton, in the Electoral District of Trinity North abutted and bounded as follows:

THAT IS TO SAY: Beginning at a point on the western limit of BALLETS LANE, the said point having coordinates N 5 360 448.02 metres and E 280 325.95 metres of the Three Degree Modified Transverse Mercator Projection (NAD-83) for the Province of Newfoundland and Labrador;

THENCE by property of Late Lucy Ploughman south seventy-eight degrees fifteen minutes forty-five seconds west (S 78-15-45 W) thirty-three decimal one two (33.12) metres, south seventy-five degrees twenty-three minutes thirty seconds west (S 75-23-30 W) twenty-nine decimal six three (29.63) metres;

THENCE along the eastern limit of formerly Canadian National Railway Right-of-Way now Crown Land (15.24 metres wide) along the arc of a curve having a radius of six hundred and thirty-four decimal two three (634.23) metres to a point, the said point being distant eighty-six decimal five six (86.56) metres as measured on a bearing of north seven degrees eleven minutes forty-five seconds west (N 7-11-45 W) from the last mentioned point;

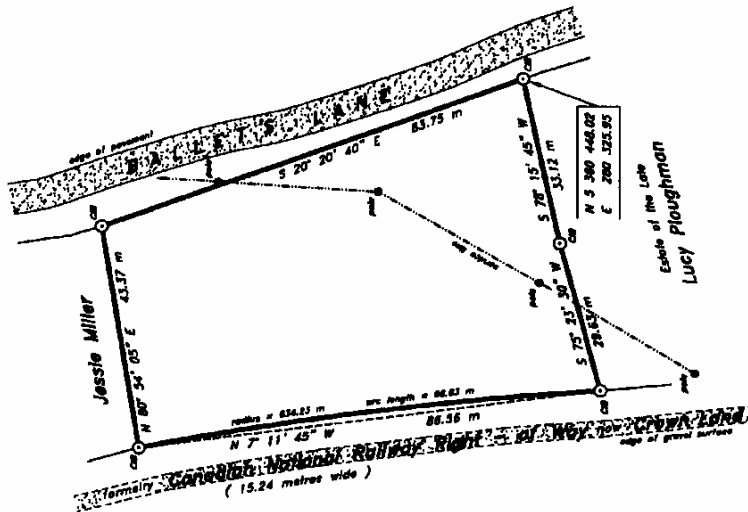
THENCE by property of Jessie Miller north eighty degrees fifty-four minutes zero five seconds east (N 80-54-05 E) forty-three decimal three seven (43.37) metres;

THENCE along the said western limit of BALLETS LANE south twenty degrees twenty minutes forty seconds east (S 20-20-40 E) eighty-three decimal seven five (83.75) metres, more or less to the point of beginning and containing an area of 0.4372 hectares.

All bearings refer to the above mentioned Projection.



SCHEDULE "E"



Area = 0.4372 hectares

CONTROL MONUMENTS

(NAD-83)	
834 024	N 5 359 875.678
	E 279 442.069
834 038	N 5 360 415.424
	E 278 826.391

NOTE: SEE CHIPPED IRON NAIL IN FRONT BAY FOR FOUNDATION  
- NO SCALE FACTOR USED  
ALL DISTANCES ARE HORIZONTAL GROUND DISTANCES



((CONTROL SURVEYS LTD. NEWFOUNDLAND LAND SURVEYORS 212C MEMORIAL DRIVE, 3RD FLOOR - TEL: (709) 462-3888 Newfoundland	
Clarenville	Newfoundland
SURVEY ON BEHALF OF KEVIN AND DONNA WALTERS	
Port Rexton	Newfoundland
SCALE: 1 : 750	JOB No.: 2006-108
DATE: January 20, 2006	SURVEY BY: J.D.B.

**CHANGE OF NAME ACT**

-----  
**C-8 RSN 1990**  
-----

**NOTICE OF APPLICATION  
FOR CHANGE OF NAME**

NOTICE is hereby given that an application will be made to the Minister of Government Services for a change of name, pursuant to the provisions of the *Change of Name Act, by me:-*

WAVEY IONIA CAVE

of 111A Brookfield Road, St. John's, in the Province of Newfoundland and Labrador, as follows:

To change my name from

WAVEY IONIA CAVE  
to  
SAMANTHA MEWS

DATED this 4<sup>th</sup> day of April, 2006

WAVEY IONIA CAVE  
(Signature of Applicant)

May 19

---

**NOTICE OF APPLICATION  
FOR CHANGE OF NAME**

NOTICE is hereby given that an application will be made to the Minister of Government Services for a change of name, pursuant to the provisions of the *Change of Name Act, by me:-*

RICHARD HAROLD SNOW

of 42 Cabot Street, St. John's, A1C 4H8 in the Province of Newfoundland and Labrador, as follows:

To change my name from

RICHARD HAROLD SNOW  
to  
RICHARD HAROLD MURPHY

DATED this 12<sup>th</sup> day of May, 2006

RICHARD HAROLD SNOW  
(Signature of Applicant)

May 19

---

**NOTICE OF APPLICATION  
FOR CHANGE OF NAME**

NOTICE is hereby given that an application will be made to the Minister of Government Services for a change of name, pursuant to the provisions of the *Change of Name Act, by me:-*

ROBIN MARY ROSE

of 21 Midland Row, Pasadena, in the Province of Newfoundland and Labrador, as follows:

To change my name from

ROBIN MARY ROSE  
to  
ROBIN MARY DURNFORD

DATED this 11<sup>th</sup> day of May, 2006

ROBIN MARY ROSE  
(Signature of Applicant)

May 19

---

**NOTICE OF APPLICATION  
FOR CHANGE OF NAME**

NOTICE is hereby given that an application will be made to the Minister of Government Services for a change of name, pursuant to the provisions of the *Change of Name Act, by me:-*

PATRICIA ANN CROUCHER-MILLER

of 7 Crescent Ave, Roberts Arm, A0J 1R0 in the Province of Newfoundland and Labrador, as follows:

To change my unmarried child's name from

KYLE BERT MILLER  
to  
KYLE BERT CROUCHER

DATED this 12<sup>th</sup> day of May, 2006

PATRICIA CROUCHER-MILLER  
(Signature of Applicant)

May 19

---

**Legal Name Changes  
Processed During the Period  
APRIL, 2006**

Under the authority vested in me by The Change of Name Act, Chapter C-8 of The Revised Statutes of Newfoundland, 1990, I hereby certify that the following names have been changed.

<u>Former Name</u>	<u>Present Name</u>	<u>Address</u>	<u>District</u>
Wheeler, Zander Donald	Doyle, Zander Donald	Bay de Verde	Trinity-Bay de Verde
March, Mark Vincent	March, Mark Vincent	Cape St. George	Port au Port
Rowe, Vincent Ross Lee	Nippard, Vincent Ross Lee	Gander	Gander
Croucher, Brooklyn Rayleen	Wiseman, Brooklyn Rayleen	Springdale	Windsor-Springdale
Turrett, Nina Marie	Tourett, Nina Marie	Maintland	Port au Port
O'Driscoll, Benita Ann	Parker, Benita Ann	Cormack	Humber Valley
Skinner, Tonya Mae	Newman, Tonya Mae	Corner Brook	Humber East
Pittman-Renton, Tara Lynn	Decker-Renton, Tara Lynn	Cow Head	St. Barbe
Foss, Brady Joseph	Benson, Brady Joseph	Bishop's Falls	Exploits
Beckett, Charleigh Catherine Ellen	King, Charleigh Catherine Ellen	St. John's	Signal Hill-Quidi Vidi

Dated this 5th day of May, 2005

*Brenda Andrews*

Brenda Andrews  
Registrar, Vital Statistics Division  
Department of Government Services & Lands



# THE NEWFOUNDLAND AND LABRADOR GAZETTE

## PART II

### SUBORDINATE LEGISLATION FILED UNDER THE STATUTES AND SUBORDINATE LEGISLATION ACT

---

Vol. 81

ST. JOHN'S, FRIDAY, MAY 19, 2006

No. 20

### NEWFOUNDLAND AND LABRADOR REGULATIONS

NLR 40/06

NLR 41/06

NLR 42/06

NLR 43/06



**NEWFOUNDLAND AND LABRADOR  
REGULATION 40/06**

*Pension Benefits Act Regulations  
(Amendment)  
under the  
Pension Benefits Act, 1997  
(O.C. 2006-210)*

*(Filed May 15, 2006)*

Under the authority of subsection 78(1) of the *Pension Benefits Act*, the Lieutenant-Governor in Council makes the following regulations.

Dated at St. John's, May 15, 2006.

Robert C. Thompson  
Clerk of the Executive Council

**REGULATIONS**

*Analysis*

- |  |   |
|--|---|
| 1. S.41 Amdt.<br>Application to public sector<br>plans | 2. S.42.2 Added<br>Municipalities pension plan<br>exemption |
|  | 3. Commencement   |

NLR 114/96  
as amended

**1. Paragraph 41(4)(a) of the *Pension Benefits Act Regulations* is amended by**

**(a) striking out the date "April 1, 2002" and substituting the date "January 1, 2006"; and**

**(b) striking out the date "December 31, 2005" and substituting the date "December 31, 2010".**

**2. The regulations are amended by adding immediately after section 42.1 the following:**

Municipalities  
pension plan ex-  
emption

**42.2** (1) The Newfoundland and Labrador Municipal Employees Benefits Inc. Pension Plan shall be exempt from the requirement of paragraph 12(3)(d) for the period January 1, 2006 to December 31, 2008 in respect of the solvency deficiency of the plan as of December 31, 2005.

(2) Notwithstanding subsection (1), in the event of the termination of the plan, an amount that would have been payable under paragraph 12(3)(d) had the exemption not been given shall be paid by the participating employers to the fund.

Commencement

**3. These regulations shall be considered to have come into force on January 1, 2006.**

©Earl G. Tucker, Queen's Printer





**NEWFOUNDLAND AND LABRADOR  
REGULATION 41/06**

*Newfoundland and Labrador T' Railway Provincial Park  
Proclamation (Amendment)  
under the  
Provincial Parks Act*

*(Filed May 15, 2006)*

Under the authority of subsection 4(2) of the *Provincial Parks Act*, I make the following Order.

Dated at St. John's, May 10, 2006.

Clyde Jackman  
Minister of Environment and Conservation

**ORDER**

*Analysis*

1. Sch. Amdt.

NLR 93/97  
as amended

**1. The *Newfoundland and Labrador T' Railway Provincial Park Proclamation* is amended by adding at the end of the Schedule the following:**

**The area described in this Schedule is decreased by removing the following parcels of land:**

1. Tipple property

All that piece or parcel of land situate and being at Pasadena in the Electoral District of Humber East, Province of Newfoundland and Labrador, abutted and bounded as follows:

Beginning at a point, that point being the southeasterly angle of a Crown Grant to David Tapp and registered in Volume 206, Folio 136 at the Registry of Crown Grants and is distant 838.7 metres as measured on a bearing of north 32° 33' 18" west from Control Monument No. 87G2370;

Then running by land of David Tapp north 33° 47' west 5.24 metres;

Then running by the southerly boundary of Lease No. 120050 to Sadie Tipple along a curve to the right having a radius of 792.32 metres to a point on the curve bearing north 60° 33' 50" east 102.358 metres from the preceding point;

Then running by T'Railway Provincial Park south 42° 57' 59" west 14.65 metres;

Then running by the T'Railway Provincial Park along a curve to the left having a radius of 787.08 metres south 60° 02' 45" west 88 metres, more or less, to the point of beginning containing an area of 500.42 square metres, more or less.

All bearings being referred to 3° Grid North NAD 1983 as referred to the Transverse Mercator Projection for Newfoundland and Labrador with the Central Meridian at 58° 30' west longitude.

## 2. Anderson property

All that piece or parcel of land situate and being at Barretts Road, City of Corner Brook, Electoral District of Day of Islands, Province of Newfoundland and Labrador, abutted and bounded as follows:

Beginning at a point in the northern limit of the T'Railway Provincial Park, 15.24 metres wide, that point being distant 533.962 metres as measured on a bearing of south 72° 04' 14" east from Control Survey Monument No. 94G5036;

Then by the T'Railway Provincial Park south 77° 05' 20" east 8.547 metres;

Then north 6° 51' 40" east 0.9 metres;

Then by land of Ralph Anderson north 83° 08' west 8.499 metres to the point of beginning containing an area of 3.8 square metres;

Bearings are referred to the meridian of 58° 30' west longitude of the 3° Transverse Mercator Projection NAD 83 Datum.

3. Peters and Young property

All that piece or parcel of land lying northwest of an access road between Steady Brook and Humber Village, in the Community of Little Rapids in the Electoral District of Humber East, in the Province of Newfoundland and Labrador, being further bounded and described as follows:

Beginning at a point, that point being found by running from Monument No. 87G2375, south 18° 50' 02" west 694.858 metres;

Then running from the above described point of beginning by land of the Government of Newfoundland and Labrador, south 56° 53' 50" west 48 metres and north 33° 07' 20" west 9 metres;

Then running by land granted to Michael Basha, Vol. 108 Fol. 438, north 56° 53' 50" east 48 metres;

Then running by land of the Government of Newfoundland and Labrador, south 33° 07' 20" east 9 metres, more or less, to the point of beginning;

The described parcel of land contains an area of 432 square metres, more or less and is more particularly shown on Schedule B attached (attached to the surveyor's documents);

All bearings refer to 3° Grid North NAD 1983 as referred to the Transverse Mercator Projection for Newfoundland and Labrador with the Central Meridian at 58° 30' west longitude.

4. Little Harbour property - parcel 1

All that piece or parcel of land lying northwest of the Trans Canada Highway at Little Harbour, in the Electoral District of Humber Valley,

in the Province of Newfoundland and Labrador, being further bounded and described as follows:

Beginning at a point, that point being the northerly corner of the described lot and having co-ordinates of north 5,442,343.817 and east 376,868.979;

Then running from the above described point of beginning by land of Nathaniel Rubia, and by a Right of Way, south 58° 39' 53" west 208.753 metres;

Then running by land of Taylor Estates, and by a Right of Way, south 58° 35' 53" west 388.629 metres;

Then running by land of the Government of Newfoundland and Labrador, T'Railway, south 60° 22' 00" east 34.838 metres;

Then running by land of Taylor Estates, and by Crown Land, north 58° 35' 53" east 371.74 metres;

Then running by Crown Land, north 58° 39' 53" east 208.736 metres;

Then running by land of the Government of Newfoundland and Labrador, T'Railway, north 31° 20' 07" west 30.48 metres, more or less, to the point of beginning containing an area of 1.795 hectare, more or less, and being more particularly shown on Yates and Woods Limited Drawing No. 04022-2, dated September 30, 2004;

All bearings refer to 3° Grid North NAD 1983 as referred to the Transverse Mercator Projection for Newfoundland and Labrador with the Central Meridian at 58° 30' west longitude.

5. Little Harbour property - parcel 2

All that piece or parcel of land situate and being at Little Harbour, in the Electoral District of Humber Valley, in the Province of Newfoundland and Labrador, being further bounded and described as follows:

Beginning at a point, that point being found by running from Monument No. 87G2366, south 0° 14' 13" east 319.606 metres;

Then running from the above described point of beginning by the Government of Newfoundland and Labrador T'Railway, south  $0^{\circ} 58' 7''$  east 35.351 metres;

Then running by land of Lakeside Investments Inc., south  $58^{\circ} 35' 53''$  west 1018.353 metres, to a point;

Then running along a curve of radius 719.44 metres, to a point being distant 34.068 metres, as measured on a bearing of south  $57^{\circ} 14' 23''$  west from the last mentioned point;

Then running by the Government of Newfoundland and Labrador T'Railway, along a curve of radius 105 metres, to a point being distant 79.234 metres, as measured on a bearing of south  $75^{\circ} 37' 26''$  west from the last mentioned point;

Then running by land of Lakeside Investments Inc., along a curve of radius 749.92 metres, to a point being distant 110.116 metres, as measured on a bearing of north  $54^{\circ} 23' 10''$  east from the last mentioned point;

Then running north  $58^{\circ} 35' 53''$  east 1036.26 metres, more or less, to the point of beginning containing an area of 3.314 hectare, more or less;

All bearings refer to  $3^{\circ}$  Grid North NAD 1983 as referred to the Transverse Mercator Projection for Newfoundland and Labrador with the Central Meridian at  $58^{\circ} 30'$  west longitude.

#### 6. Marine Institute property

All that piece or parcel of land situate and being on the west side of Holyrood Harbour, in the Town of Holyrood, in the electoral district of Harbour Main, Whitbourne, in the Province of Newfoundland and Labrador, being bounded and abutted as follows:

Beginning at a point that point having coordinates of north 5,250,066.206 metres, and east 294,475.456 metres;

Then extending along a 10 metre wide reservation along the waters of Holyrood Harbour, south  $74^{\circ} 55' 33''$  east 24.502 metres;

Then north 82° 44' 07" east 3.306 metres;

Then running by Crown Land, along the arc of a curve having an arc of 133 metres and a radius of 157.651 metres chord bearing and distance of south 18° 54' 28" east 129.09 metres;

Then south 1° 49' 34" west, 42.342 metres;

Then by lands of Seaxx Inc, roll 1299, frame 193, south 18° 9' 30" west, 9.776 metres;

Then extending across a 10 metre reservation along the high water mark of Holyrood Harbour and Crown Land, north 68° 40' 34" west, 15.304 metres;

Then extending along Crown Land, north 14° 07' 21" east, 13.840 metres;

Then 73.772 metres along the arc of a curve having a radius of 118.853 metres and a chord bearing, and distance of north 0°, 20', 30" west, 72.593 metres;

Then north 10° 51' 0" west, 22.753 metres;

Then north 36° 33' 53" west, 81.88 metres, to the principal point of beginning;

The above described parcel contains in all an area of 2744 square metres and is more particularly shown on the attached plan (attached to the surveyor's documents).

The above described piece or parcel of land being subject to a sewer line easement 3 metres wide.

All bearings being referred to Grid North NAD 83.

**The area described in this Schedule is increased by adding the following parcels of land:**

1. Little Harbour property - parcel 1

All that piece or parcel of land lying northwest of the Trans Canada Highway at Little Harbour, in the Electoral District of Humber Valley, in the Province of Newfoundland and Labrador, being further bounded and described as follows:

Beginning at a point on the southwest limit of a Road Reserve 15 metres wide, that point being found by running from Monument No. 87G2366, south 38° 24' 41" east 306.25 metres;

Then from the above described point of beginning by the southerly limit of the Government of Newfoundland and Labrador T'Railway, south 58° 35' 53" west 49.936 metres;

Then running by Crown Land, south 42° 15' 53" west 214.923 metres;

Then running by land granted by the Crown to Bishop O'Reilly General Assembly of the Knights of Columbus, and registered under Vol. 166 - Fol. 32 in the Registry of Crown Grants, south 0° 58' 07" east 43.797 metres;

Then running by Crown Land, north 42° 15' 53" east 292.006 metres;

Then running by the southwest limit of the Road Reserve 15 metres wide, north 37° 58' 05" west 16.191 metres, more or less, to the point of beginning containing an area of 0.801 hectare, more or less;

All bearings refer to 3° Grid North NAD 1983 as referred to the Transverse Mercator Projection for Newfoundland and Labrador with the Central Meridian at 58° 30' west longitude.

## 2. Little Harbour property - parcel 2

All that piece or parcel of land lying north of the Trans Canada Highway, at Little Harbour, in the Electoral District of Humber Valley, in the Province of Newfoundland and Labrador, being further bounded and described as follows:

Beginning at a point, that point being found by running from Monument No. 87G2366, south 0° 25' 06" east 425.05 metres;

Then running from the above described point of beginning by Crown Land, south 0° 58' 07" east 43.797 metres;

Then running by Crown Land, by land of Lakeside Investments Inc., and by Crown Land, south 42° 15' 53" west 845.738 metres, to a point;

Then running by land of Lakeside Investments Inc., along a curve of radius 105 metres, to a point being distant 148.468 metres, as measured on a bearing of south 87° 16' 27" west from the last mentioned point;

Then continuing by land of Lakeside Investments Inc., north 44° 25' 18" west 204.77 metres, to a point;

Then running along a curve of radius 75 metres, to a point being distant 94.18 metres, as measured on a bearing of north 53° 11' 10" east from the last mentioned point;

Then running by the Government of Newfoundland and Labrador T'Railway, along a curve of radius 719.44 metres, to a point being distant 67.7 metres, as measured on a bearing of north 53° 11' 10" east from the last mentioned point;

Then running by land of Lakeside Investments Inc., along a curve of radius 105 metres, to a point being distant 68.014 metres, as measured on a bearing of south 63° 18' 43" east from the last mentioned point;

Then continuing by land of Lakeside Investments Inc., south 44° 24' 52" east 203.447 metres, to a point, and along a curve of radius 75 metres, to a point being distant 105.755 metres, as measured on a bearing of north 87° 06' 56" east from the last mentioned point;

Then continuing by land of Lakeside Investments Inc., north 42° 15' 53" east 877.638 metres, more or less, to the point of beginning containing an area of 3.859 hectare, more or less;

All bearings refer to 3° Grid North NAD 1983 as referred to the Transverse Mercator Projection for Newfoundland and Labrador with the Central Meridian at 58° 30' west longitude.

### 3. Marine Institute property

All that piece or parcel of land situate and being on the west side of Holyrood Harbour, in the Town of Holyrood, in the electoral district of Harbour Main, Whitbourne, in the Province of Newfoundland and Labrador, being bounded and abutted as follows:



Beginning at a point having coordinates of north 5,250,063.399 metres, and east 294,483.828 metres;

Then extending along a 10 metre wide reservation along the waters of Holyrood Harbour, south 74° 55' 33" east, 7.65 metres;

Then extending along Crown Lands south 34° 12' 40" east, 40.462 metres;

Then extending 92.826 metres along the arc of a curve having a radius of 147.531 metres and a chord bearing and distance of south 12° 40' 30" east, 91.413 metres;

Then south 2° 01' 09" east, 50.749 metres;

Then north 68° 40' 34" west, 5.388 metres;

Then north 2° 01' 09" west, 49.368 metres;

Then 89.680 metres along the arc of a curve having a radius of 142.531 metres and a chord bearing and distance of north 12° 41' 43" west, 88.207 metres;

Then north 34° 12' 40" west, 45.957 metres, to the principal point of beginning.

The above described parcel contains in all an area of 766.74 square metres, and is more particularly shown on the attached plan (attached to the surveyor's documents) reserving out of the above described parcel an access road 5 metres wide crossing the lands.

The above described piece or parcel of land being subject to a sewer line casement 3 metres wide.

All bearings being referred to Grid North NAD 83.

**©Earl G. Tucker, Queen's Printer**



**NEWFOUNDLAND AND LABRADOR  
REGULATION 42/06**

*Provincial Parks Regulations  
(Amendment)  
under the  
Provincial Parks Act*

*(Filed May 15, 2006)*

Under the authority of section 8 of the *Provincial Parks Act*, I make the following regulations.

Dated at St. John's, May 11, 2006.

Clyde Jackman  
Minister of Environment and Conservation

**REGULATIONS**

*Analysis*

1. S.6.1 R&S  
Consumption of alcoholic  
liquor

NLR 91/97  
as amended

**1. Section 6.1 of the *Provincial Parks Regulations* is repealed and the following substituted:**

Consumption of  
alcoholic liquor

**6.1** (1) In this section, "alcoholic liquor" means alcoholic liquor as defined in the *Liquor Control Act*.

(2) A person shall not possess or consume alcoholic liquor within Barachois Pond Provincial Park from 12:00 noon on Friday, May 19, 2006 to 12:00 noon Monday, May 22, 2006.

(3) A person shall not possess or consume alcoholic liquor within Notre Dame Provincial Park from 12:00 noon on Friday to 12:00 noon on the immediate following Monday during the period of May 19 to June 26, 2006.

**©Earl G. Tucker, Queen's Printer**



**NEWFOUNDLAND AND LABRADOR  
REGULATION 43/06**

*Notice of Protected Water Supply Area of Gull Pond (WS-S-0434),  
Town of Lumsden  
under the  
Water Resources Act*

*(Filed May 15, 2006)*

Under the authority of section 39 of the *Water Resources Act*, I designate the area generally known as the Gull Pond Water Supply Area (WS-S-0434) for the Town of Lumsden as a protected water supply area.

Dated at St. John's, May 1, 2006.

Clyde Jackman  
Minister of Environment and Conservation

**NOTICE**

This area includes all lands in the Provincial Electoral District of Bonavista North abutted and bounded as follows:

Beginning at a point having scaled UTM coordinates of easting 311 820 metres and northing 5 461 289 metres;

Then running in a southwesterly direction for a distance of 658 metres, more or less, to a point having scaled UTM coordinates of easting 311 355 metres and northing 5 460 823 metres;

Then running in a westerly direction for a distance of 1314 metres, more or less, to a point having scaled UTM coordinates of easting 310 133 metres and northing 5 461 305 metres;

Then running in a southwesterly direction for a distance of 1039 metres, more or less, to a point having scaled UTM coordinates of easting 309 489 metres and northing 5 460 490 metres;

Then running in a northwesterly direction for a distance of 1107 metres, more or less, to a point having scaled UTM coordinates of easting 308 471 metres and northing 5 460 925 metres;

Then running in a northwesterly direction for a distance of 1601 metres, more or less, to a point having scaled UTM coordinates of easting 307 383 metres and northing 5 462 099 metres;

Then running in a northeasterly direction for a distance of 1362 metres, more or less, to a point having scaled UTM coordinates of easting 308 600 metres and northing 5 462 711 metres;

Then running in a northeasterly direction for a distance of 926 metres, more or less, to a point having scaled UTM coordinates of easting 309 244 metres and northing 5 463 377 metres;

Then running in a northeasterly direction for a distance of 886 metres, more or less, to a point having scaled UTM coordinates of easting 309 949 metres and northing 5 463 913 metres;

Then running in a southeasterly direction for a distance of 1094 metres, more or less, to a point having scaled UTM coordinates of easting 310 819 metres and northing 5 463 250 metres;

Then running in a easterly direction for a distance of 411 metres, more or less, to a point having scaled UTM coordinates of easting 311 228 metres and northing 5 463 208 metres;

Then running in a southerly direction for a distance of 698 metres, more or less, to a point having scaled UTM coordinates of easting 311 224 metres and northing 5 462 509 metres;

Then running in a easterly direction for a distance of 855 metres, more or less, to a point having scaled UTM coordinates of easting 312 069 metres and northing 5 462 385 metres;

*Notice of Protected Water Supply Area  
of Gull Pond (WS-S-0434), Town of Lumsden*

43/06

Then running in a southerly direction for a distance of 1124 metres, more or less, to the point of commencement.

All coordinates refer Zone 22 of the NAD 83 Universal Transverse Mercator Projection.

**The *Notice of Protected Water Supply Area of Gull Pond*, Consolidated Newfoundland and Labrador Regulation 594/96, is repealed.**

©Earl G. Tucker, Queen's Printer

## Index

### PART I

Change of Name Act – Applications .....	234
Corporations Act – Notice .....	223
Lands Act – Notice .....	228
Municipalities Act – Notice .....	228
Quieting of Titles Act – Notice .....	229
Urban and Rural Planning Act – Notices .....	229

### PART II

#### CONTINUING INDEX OF SUBORDINATE LEGISLATION

Title of Act and Subordinate Legislation made thereunder	CNLR or NL Reg.	Amendment	NL Gazette Date & Page No.
<b>Pension Benefits Act, 1997</b>			
Pension Benefits Act Regulations (Amdt)	NLR 40/06	Amends NLR 114/96 S. 41 Amdt. S. 42.2 Added	May 19/06, p 203
<b>Provincial Parks Act</b>			
Newfoundland and Labrador T <sup>r</sup> Railway Provincial Park Proclamation (Amdt)	NLR 41/06	Amends NLR 93/97 Sch. Amdt	May 19/06, p. 205
Provincial Parks Regulations (Amdt)	NLR 42/06	Amends NLR 91/97 S. 6 R & S	May 19/06, p. 215
<b>Water Resources Act</b>			
Notice of Protected Water Supply Area of Gull Pond (WS-5-0434), Town of Lumsden	NLR 43/06	R & S NLR 594/96	May 19/06, p 217

*The Newfoundland and Labrador Gazette* is published from the office of Earl G. Tucker, Queen's Printer.

Copy for publication must be received before **Friday, 4:30 p.m.**, seven days before publication, to ensure inclusion in next issue. Advertisements should be typewritten or printed legibly, separate from covering letter. Number of insertions required must be stated and the names of all signing officers typewritten or printed.

Advertising rates are available upon request. Subscription rate for *The Newfoundland and Labrador Gazette* is \$125.00 for 52 weeks plus applicable tax (\$133.75). Weekly issues of \$3.00 per copy, plus tax payable in advance.

All cheques, money orders, etc., should be made payable to THE NEWFOUNDLAND EXCHEQUER ACCOUNT and all correspondence should be addressed to: Office of the Queen's Printer, P. O. Box 8700, Ground Floor, East Block, Confederation Building, St. John's, NL A1B 4J6. Telephone (709) 729-3649. Fax: (709) 729-1900.

Web Site: [www.gov.nl.ca/queensprinter](http://www.gov.nl.ca/queensprinter)

**Legislative History of the Judicature Act, 1791-1988**

**Price \$25.00 plus G.S.T.**

**(Plus \$2.00 postage and handling)**

**Place you order by contacting:**

**Office of The Queen's Printer**

**Confederation Building, East Block**

**St. John's, NL A1B 4J6**

**Telephone: (709) 729-3649 Fax: (709) 729-1900**

**Government Information Product**

**Publication Rate Mail**

**G.S.T. # R107442683**

**All requests for Subscription and Legislation MUST be prepaid.**