



THE NEWFOUNDLAND AND LABRADOR GAZETTE

PART I

PUBLISHED BY AUTHORITY

Vol. 83		ST. JOHN'S, FRIDAY, DECEMBER 19, 2008		No. 51	
		CORPORATIONS ACT	2008-11-05	59112	AVALON MARINE SERVICES LTD.
		<i>Corporations Act - Section 393</i>	2008-11-05	59111	CRANE'S CONTRACTING LTD.
		Local Incorporations			
		For the Month of: November 2008			
Date	Number	Company Name			
2008-11-02	59083	HHR Construction Services Inc.	2008-11-05	59110	KJT&J ENTERPRISES LTD.
2008-11-03	59093	59093 NEWFOUNDLAND AND LABRADOR INC.	2008-11-05	59107	MVR HOLDINGS INC.
2008-11-03	59094	59094 NEWFOUNDLAND AND LABRADOR INC.	2008-11-05	59108	59107 NEWFOUNDLAND & LABRADOR CORP
2008-11-03	59095	SPINAL CORD NL. FOUNDATION INC.	2008-11-06	59114	Dalton Inspection Services Incorporated
2008-11-03	59084	Gros Morne Bar & Grill Inc.	2008-11-06	59115	59114 NEWFOUNDLAND & LABRADOR INC.
2008-11-03	59089	The Fashion Warehouse Limited	2008-11-06	59120	59115 NEWFOUNDLAND & LABRADOR INC.
2008-11-03	59092	Watton's Firewood Sales Ltd.	2008-11-07	59125	LABRADOR INC.
2008-11-04	59100	59100 NEWFOUNDLAND AND LABRADOR LIMITED	2008-11-07	59126	SQUARE LINE BUILDERS INC.
2008-11-04	59101	COUNTERBALANCE CONDITIONING & FITNESS INC.	2008-11-07	59124	BARTLETT FOOD SERVICES LIMITED
2008-11-04	59102	R & M LOGGING (2008) LTD.	2008-11-07	59128	BLISS HOLDINGS LIMITED
			2008-11-10	59134	FRENCHY'S CUSTOM CYCLE INC.
			2008-11-10	59135	H & A ORAM CONVENIENCE LTD.
					ABBOTT ELECTRIC LTD.
					ALL PAWS IN (2008) INC.

THE NEWFOUNDLAND AND LABRADOR GAZETTE
December 19, 2008

2008-11-10	59140	D. BROWN ENGINEERING LTD.	2008-11-19	59177	Hawco Holdings Limited
2008-11-10	59137	JENNICK ENTERPRISES INC.	2008-11-19	59184	Old Perlican Foodland Limited
2008-11-10	59139	NORTHEAST PROPERTIES INC.	2008-11-20	59204	BRANCH - CAPE SHORE DEVELOPMENT CORPORATION
2008-11-10	59136	TAKE HOLD FILMS INC.	2008-11-20	59200	CENTRAL DESTINATION MARKETING ORGANIZATION INC.
2008-11-10	59132	59132 NEWFOUNDLAND & LABRADOR LTD.	2008-11-20	59194	COMMUNITY GARDEN ALLIANCE INC.
2008-11-10	59133	M5 Public Relations Inc.	2008-11-20	59201	DEXTER ENERGY SERVICES INC.
2008-11-12	59143	ATLANTIC OFFSHORE INTERNATIONAL INC.	2008-11-20	59196	FOOD EDUCATION ACTION ST. JOHN'S INC.
2008-11-12	59146	COSMOS ENTERPRISES LTD.	2008-11-20	59203	MCM MARINE INC.
2008-11-12	59142	LEAR & HUDSON CONTRACTING INC.	2008-11-20	59202	SOUND CONSTRUCTION (2008) LIMITED
2008-11-12	59145	MELLINIUM CONTRACTING LTD.	2008-11-20	59192	59192 NEWFOUNDLAND & LABRADOR LIMITED
2008-11-12	59147	NORRIS POINT LIONS CLUB INC.	2008-11-20	59193	JLC Holdings Ltd.
2008-11-13	59156	59156 NEWFOUNDLAND AND LABRADOR LIMITED	2008-11-21	59215	A & L RECREATION COMMITTEE INC.
2008-11-13	59157	59157 NEWFOUNDLAND AND LABRADOR LIMITED	2008-11-21	59212	BIG LAND PHARMASAVE LTD.
2008-11-13	59158	ATHERTON HOLDINGS INC.	2008-11-21	59213	COACH PHYLLIS.COM INC
2008-11-13	59155	CRESCENT COVE HOLDINGS INC.	2008-11-21	59216	NEWFOUNDLAND PIPE WORKS INC.
2008-11-13	59162	INTEGRATED DESIGN MEASURES LIMITED	2008-11-21	59214	ROB'S MINI DIGS LTD.
2008-11-13	59161	LARK HARBOUR TRAIL COMMITTEE INC.	2008-11-21	59195	envision group consulting inc.
2008-11-13	59149	Avalon Transfer Limited	2008-11-21	59207	59207 NEWFOUNDLAND & LABRADOR LTD
2008-11-13	59150	Burnt Cove Softball Restoration Committee Inc.	2008-11-21	59208	59208 NEWFOUNDLAND & LABRADOR LIMITED
2008-11-14	59167	59167 NEWFOUNDLAND AND LABRADOR LTD.	2008-11-21	59209	Marvin Way Holdings Limited
2008-11-14	59168	GIGGLES RESTAURANT & CATERING SERVICES LTD.	2008-11-21	59210	Marvin Way Investments Limited
2008-11-14	59152	CROSSROADS LOUNGE LTD	2008-11-24	59219	L & R CLEANING SERVICES LTD.
2008-11-14	59153	Janes Holdings Inc.	2008-11-24	59221	RICHARD'S COLLECTIBLES AND FUNDRAISING INC.
2008-11-14	59163	C & H Quality Consulting Inc.	2008-11-24	59220	THE PINK PAGES INC.
2008-11-14	59164	WestRock Properties Inc.	2008-11-24	59211	Monty Way Investments Limited
2008-11-14	59165	Millbrook Development Company Inc.	2008-11-24	59217	Myx Meeting Centres Incorporated
2008-11-17	59175	59175 NEWFOUNDLAND AND LABRADOR INC.	2008-11-24	59218	59218 NEWFOUNDLAND & LABRADOR INC.
2008-11-17	59171	COTTER SOFTWARE INC.	2008-11-25	59226	ASK ME HOW INC.
2008-11-17	59173	DINN'S ENTERPRISES INC.	2008-11-25	59231	BELL ISLAND BREAST CANCER AWARENESS GROUP INC.
2008-11-17	59169	Northern Imaging Photo Studio Limited	2008-11-25	59232	BURNT ISLANDS COME HOME YEAR COMMITTEE (2008) INC.
2008-11-18	59182	AIDEN'S CONVENIENCE STORE INC.	2008-11-25	59228	DR. ROBERT D. COOK PROFESSIONAL MEDICAL CORPORATION
2008-11-18	59179	CORCORAN ENTERPRISES INC.	2008-11-25	59225	LADY BARRETT ENTERPRISE INC.
2008-11-18	59178	HR. BUFFETT HOLDINGS INC.	2008-11-26	59236	HEAT TRACE ELECTRIC LTD.
2008-11-18	59181	NL AUTOMOTIVE EXTRAVAGANZA INC.	2008-11-26	59233	HEATEC SYSTEMS INC.
2008-11-18	59180	NL RV ENTERPRISES INC.	2008-11-26	59235	LABRADOR SATELLITE COMMUNICATION INC.
2008-11-19	59187	CAPE SHORE SHEEP BREEDERS INC	2008-11-26	59234	PRITCHETT'S GROCERY LTD
2008-11-19	59186	CARDIO FIT BOOTCAMP INC.	2008-11-27	59237	59237 NEWFOUNDLAND & LABRADOR INC.
2008-11-19	59185	CURB APPEAL LANDSCAPING INC.	2008-11-27	59239	KEATING AND ASSOCIATES INC.
2008-11-19	59188	KELLY'S PUB LTD.			
2008-11-19	59189	TRINITY DEVELOPMENT LTD.			
2008-11-19	59176	Matthews Holdings Inc.			

THE NEWFOUNDLAND AND LABRADOR GAZETTE
December 19, 2008

2008-11-27	59238	Clixtec IT Consulting Inc.	2008-11-04	22155	PORT AUX BASQUES
2008-11-28	59243	BONAVISTA NORTH TRANSPORTATION (2008) INC.			COMMUNITY EMPLOYMENT CORPORATION
2008-11-28	59242	EAST COAST ALARMS INC.	2008-11-04	25926	R.M.S. ENTERPRISES LIMITED
Total Incorporations: 107			2008-11-04	52472	ST. JOHN'S AND AREA COUNCIL OF CHURCHES, INC.
Corporations Act - Section 331					
Local Revivals					
For the Month of: November 2008					
Date	Number	Company Name			
2008-11-03	33008	ROBERTS REFRIGERATION LIMITED	2008-11-07	15891	Capital Crane Limited
2008-11-05	26691	Kennedy's Holdings Limited	2008-11-07	59039	DR. E. HUNT PROFESSIONAL MEDICAL CORPORATION
2008-11-05	31630	WHELAN'S MOTOR WORKS LTD	2008-11-10	58812	Alland Developments Ltd.
2008-11-06	37383	HOUSE BUILDERS INC	2008-11-10	39272	K. Leigh Enterprises Limited
2008-11-07	29836	10213 Newfoundland Ltd.	2008-11-10	51299	Matrix Construction Ltd.
2008-11-07	7408	ENAIID LIMITED	2008-11-10	56787	METRO SELF STORAGE INC.
2008-11-13	37571	KELLIGREWS MASSAGE & HYDROTHERAPY INC.	2008-11-10	35071	Morey's Enterprises Ltd.
2008-11-17	28844	The Workshop Limited	2008-11-13	41343	41343 NEWFOUNDLAND AND LABRADOR LTD.
2008-11-18	31378	TRINITY EQUIPMENT RENTALS LIMITED	2008-11-13	56713	G. & G. LOVELESS CONSULTING INC.
2008-11-21	45096	Bellyflop Films Limited	2008-11-13	55582	PLATO CONSULTING INC.
2008-11-21	21108	KITTIWAKE DANCE THEATRE INCORPORATED	2008-11-13	55801	PLATO HOLDINGS INC.
2008-11-25	45504	PLATE COVE EAST WHARF ASSOCIATION INC.	2008-11-14	49186	Aiviktok Trust Fund Corporation
2008-11-26	35637	COLONIAL RESTORATION & CONSTRUCTION LIMITED	2008-11-14	1497	EASTER SEALS, NEWFOUNDLAND AND LABRADOR INC.
2008-11-27	10487	Lions Club of Burgeo	2008-11-14	7138	Gouldings' Wholesale Limited
2008-11-28	32246	Centre City Ltd.	2008-11-14	58079	JNM FEED KITCHENS LTD
Total Revivals: 15			2008-11-14	58189	KELMAR VENTURES INC.
			2008-11-17	23673	ALL 4 ONE FIBRE PRODUCTS LIMITED
			2008-11-17	48197	LABRADOR INDUSTRIAL SOLUTIONS LIMITED
Corporations Act - Section 296 and 393					
Local Continuances					
For the Month of: November 2008					
Date	Number	Company Name			
2008-11-10	59138	DR. NATHANIEL SAMSON PROFESSIONAL OPTOMETRIC CORPORATION	2008-11-17	28844	The Workshop Limited
Total Continuances: 1			2008-11-18	59077	59077 NEWFOUNDLAND & LABRADOR LIMITED
Corporations Act - Section 286					
Local Amendments					
For the Month of: November 2008					
Date	Number	Company Name			
2008-11-03	58298	58298 NEWFOUNDLAND & LABRADOR LTD.	2008-11-18	30359	R. Wareham Services Limited
2008-11-03	57115	ROTARY CLUB OF AVALON NORTHEAST FOUNDATION INC.	2008-11-18	54595	SUREWELD INSPECTION & CONSULTING INC
2008-11-04	52380	52380 NEWFOUNDLAND & LABRADOR INC.	2008-11-19	21939	Coady's Home Limited
2008-11-04	44952	C & T RENTALS INC.	2008-11-20	59138	DR. NATHANIEL SAMSON PROFESSIONAL OPTOMETRIC CORPORATION
			2008-11-21	5863	BAY BULLS - BAULINE ATHLETIC ASSOCIATION INC.
			2008-11-21	20451	Handicap Equipment Limited
			2008-11-21	58907	SEN Legal Services PLC Inc.
			2008-11-21	58906	Susan E. Norman Professional Law Corporation Inc.
			2008-11-24	30641	South Coast Construction Incorporated
			2008-11-24	48487	VIKING FUR INC.

THE NEWFOUNDLAND AND LABRADOR GAZETTE
December 19, 2008

2008-11-24	42166	WAY'S TRANSPORT LTD.	2008-11-21	31917	ACCESS INDEPENDENCE
2008-11-25	27945	27945 NEWFOUNDLAND AND LABRADOR LTD.	2008-11-21	53601	MOBILITY SERVICES INC. ISLE OF DEMONS BOAT CHARTERS INC.
2008-11-25	41063	HOWLEY ESTATES DAYCARE AND PRESCHOOL LIMITED	2008-11-21	49360A	West Coast Dispensary Limited
2008-11-25	48553	JBG BUSINESS SUPPORT INC.	2008-11-25	48535	Health Planning & Consulting Services Inc.
2008-11-25	59007	SIMPLIFIED SOLUTIONS INC.	2008-11-25	48911	KETTLE'S TRANSPORT LTD.
2008-11-26	57303	57303 NEWFOUNDLAND & LABRADOR CORP	2008-11-25	18723	UPPER HUMBER LOGGING LIMITED
2008-11-26	4310	M. Francis Kelly Limited	2008-11-25	43601	V. and D. Grocery Limited
2008-11-26	58232	R.A.T. RENTAL HOLDINGS LTD.	2008-11-28	48963	First Rate Contracting Limited
2008-11-27	48602	MARY BROWN'S HOLDINGS CORPORATION	Total Dissolutions: 27		
2008-11-28	33485	BURIN PENINSULA BRIGHTER FUTURES INC.	Corporations Act - Section 294		
2008-11-28	5033	NEWFOUNDLAND & LABRADOR FOLK ARTS SOCIETY INC.	Local Amalgamations		
2008-11-28	58982	TROUTERS SPECIAL WORM FARM (2008) LTD.	For the Month of: November 2008		

Total Amendments: 54

Corporations Act - Section 315
Local Arrangements
For the Month of: November 2008

Date	Number	Company Name
2008-11-19	56332	MDC FISHERIES INCORPORATED

Total Arrangements: 1

Corporations Act - Section 335
Local Dissolutions
For the Month of: November 2008

Date	Number	Company Name
2008-11-03	15253	BEBB PUBLISHING LIMITED
2008-11-04	56931	MERCER FLOORING INC.
2008-11-05	52370	OLE ENTERPRISES INC.
2008-11-05	22133	RAY-DON INVESTMENTS LIMITED
2008-11-06	56906	A&E Computer Services Ltd.
2008-11-06	34561	SAMANCO HOLDINGS LIMITED
2008-11-10	53306	D & S MARINE FIBREGLASSING & WELDING LTD.
2008-11-13	56710	JUST 4 KIDS LTD.
2008-11-13	30568	RYAN'S TRUCKING & EQUIPMENT LIMITED
2008-11-14	52044	CABOT LABOR SUPPLY COMPANY LTD.
2008-11-14	48847	POLLETT INVESTMENTS INC.
2008-11-18	49443	Amazing Lawn Care Ltd.
2008-11-18	52130	Hillier's Renovating & Construction Ltd.
2008-11-18	54641	J.A.E. Enterprize Inc.
2008-11-19	25091	Best Pike Holdings Limited
2008-11-19	58188	M & B Ultramar Ltd.
2008-11-19	50928	VISIBLE SAFETY INC.
2008-11-21	49289	1010 HOLDINGS LIMITED
2008-11-21	49288	2020 HOLDINGS LIMITED

Total Dissolutions: 27

Corporations Act - Section 294
Local Amalgamations
For the Month of: November 2008

Date	Number	Company Name
2008-11-01	59090	VENTURE PARTNERS LIMITED
From:	10202	B B & S MANAGEMENT LIMITED
	33093	QSR HOLDINGS LIMITED
	6110	ROBAR LIMITED
	22341	VENTURE PARTNERS LIMITED
2008-11-07	59129	11035 (NFLD.) INC.
From:	44909	11035 (Nfld.) Inc.
	41793	DNS Capital Inc.
2008-11-13	59159	K & W INVESTMENTS LTD.
From:	41343	41343 NEWFOUNDLAND AND LABRADOR LTD.
	55624	759989 ALBERTA LTD.
	10870	SOUTH BROOK PARK LIMITED

Total Amalgamations: 3

Corporations Act - Section 286
Local Name Changes
For the Month of: November 2008

Number	Company Name
58298	58298 NEWFOUNDLAND & LABRADOR LTD.
2008-11-03	From: 58298 NEWFOUNDLAND & LABRADOR INC.
59039	DR. E. HUNT PROFESSIONAL MEDICAL CORPORATION
2008-11-07	From: E. HUNT PROFESSIONAL MEDICAL CORPORATION
58079	JNM FEED KITCHENS LTD
2008-11-14	From: 58079 NEWFOUNDLAND & LABRADOR CORP
58189	KELMAR VENTURES INC.
2008-11-14	From: Kelmar Fiberglass Inc.
59138	DR. NATHANIEL SAMSON PROFESSIONAL OPTOMETRIC CORPORATION
2008-11-20	From: DR. NATHANIEL SAMSON INCORPORATED

THE NEWFOUNDLAND AND LABRADOR GAZETTE
December 19, 2008

5033		NEWFOUNDLAND & LABRADOR FOLK ARTS SOCIETY INC.	2008-11-12	59141	CYENCE INTERNATIONAL INC.
2008-11-28	From:	NEWFOUNDLAND & LABRADOR FOLK ARTS COUNCIL INC.	2008-11-12	59148	EXEL DIRECT INC.
			2008-11-12	59144	MACQUARIE EQUIPMENT FINANCE LTD./
58982		TROUTERS SPECIAL WORM FARM (2008) LTD.	2008-11-13	59151	MACQUARIE FINANCEMENT D'ÉQUIPEMENT LTÉE.
2008-11-28	From:	58982 NEWFOUNDLAND & LABRADOR INC.	2008-11-13	59154	CANADIAN ANTIMONY MINE INC.
			2008-11-14	59166	ROGER'S ELECTRIC MOTOR SERVICE (1998) LTD.
Total Name Changes: 7					BNY CONVERGEX EXECUTION SOLUTIONS LLC
Corporations Act - Section 443 Extra-Provincial Registrations For the Month of: November 2008			2008-11-17	59170	TANREN CORPORATION
			2008-11-17	59172	WCSB OIL & GAS ROYALTY INCOME 2008-II MANAGEMENT CORP.
Date	Number	Company Name	2008-11-18	59183	FINANCIAL HORIZONS INCORPORATED
2008-11-03	59096	CANWEST TELEVISION GP INC.	2008-11-19	59191	OSBORN & LANGE INC.
2008-11-03	59097	SPROTT ASSET MANAGEMENT GP INC.	2008-11-20	59197	GROUPE SCV INC.
2008-11-03	59098	SPROTT PRIVATE WEALTH GP INC.	2008-11-20	59198	LULULEMON ATHLETICA CANADA INC.
2008-11-04	59106	HARBOUR AUTHORITY OF OLD PERLICAN	2008-11-20	59205	STEMP HOLDINGS LTD.
2008-11-04	59105	SIGNATURE LIVING (KENNY'S POND) MANAGEMENT INC.	2008-11-24	59224	C & S INSULATION INC.
2008-11-04	59103	SIGNATURE LIVING HEALTH CARE SERVICES CORP.	2008-11-24	59222	PAYLINE FINANCIAL INC.
2008-11-04	59104	Sunshine Kids Juvenile Products Inc./	2008-11-25	59227	JONATHAN FINANCIAL INC.
		Les produits juvéniles Sunshine Kids inc.	2008-11-25	59229	PC FINANCIAL INSURANCE BROKER INC./
2008-11-05	59109	AKRON INSURANCE LIMITED	2008-11-27	59240	COURTIER D'ASSURANCE PC FINANCE INC.
2008-11-06	59116	4528027 MANITOBA LTD.	2008-11-27	59241	AIR RESOURCES CANADA LTD.
2008-11-06	59117	LITTLE TERRORS HOLDINGS LTD.	2008-11-28	59244	INDO BRITISH GARMENTS (CANADA) LTD.
2008-11-06	59118	SYSTAGENIX WOUND MANAGEMENT (CANADA) ULC			INTERNATIONAL ADVISORY SERVICES GROUP (IASG) ULC
2008-11-07	59130	BENNETT MOTOR EXPRESS, L.L.C.	Total Registrations: 37		
2008-11-07	59127	CRÉDIT AGRICOLE ASSET MANAGEMENT CANADA INC. CRÉDIT AGRICOLE GESTION D'ACTIFS CANADA INC.	Corporations Act - Section 451 Extra-Provincial Name Changes For the Month of: November 2008		
2008-11-07	59131	LEIPSIC PRIVATE RISK MANAGEMENT INC./	Number		Company Name
		GESTION DE RISQUES PRIVÉE LEIPSIC INC.	58449		VFC Home Inc.
2008-11-07	59122	ZENDA DUFFY PLACE HOLDINGS CORPORATION DE GESTION ZENDA DUFFY PLACE	2008-11-04	From:	6943616 CANADA LIMITED
2008-11-07	59123	ZENDA GLENHILL HOLDINGS CORPORATION DE GESTION ZENDA GLENHILL	52208		LDIC INC.
2008-11-10	59289	LENGKEEK VESSEL ENGINEERING INCORPORATED	2008-11-12	From:	LAWRENCE DECTER INVESTMENT COUNSEL INC.
Total Name Changes: 2					

**Corporations Act - Section 294
Extra-Provincial Registrations for Amalgamation
For the Month of: November 2008**

Date	Number	Company Name		
2008-11-03	59099	TYCO THERMAL CONTROLS (CANADA) LTD.	Mineral License Held by Situate near On map sheet	012731M A.S.K. Prospecting & Guiding Inc. Lloyds River, Central NL 12A/06
From:	6197F	TYCO THERMAL CONTROLS (CANADA) LTD.	Mineral License Held by Situate near On map sheet	010103M Mercer, Roderick Bell Island, Avalon Peninsula 01N/10
2008-11-0	759121	HATCH LTD./ HATCH LTÉE	Mineral License Held by Situate near On map sheet	011228M New Island Resources Inc Nugget Pond, Baie Verte Peninsula 02E/13
From:	56762	HATCH LTD./ HATCH LTÉE	Mineral License Held by Situate near On map sheet	012679M Tripple Uranium Resources Inc. Alexis River 13A/09 13A/10
2008-11-13	59160	BLACKMONT CAPITAL INC.	Mineral License Held by Situate near On map sheet	012681M Commander Resources Ltd. Kings Point, Central NL 12H/09
From:	6393F	BLACKMONT CAPITAL INC.	more particularly described in an application on file at Department of Natural Resources	
2008-11-19	59190	PRINCE EDWARD AIR LTD.	Mineral License Held by Situate near On map sheet	012682M Commander Resources Ltd. Kings Point, Central NL 12H/09
From:	5117F	PRINCE EDWARD AIR LTD.	more particularly described in an application on file at Department of Natural Resources	
2008-11-20	59206	ASHFORD INVESTMENTS INC.	A portion of license Held by Situate near On map sheet	
From:	59205	STEMP HOLDINGS LTD.		
2008-11-20	59199	INVESTIA SERVICES FINANCIERS INC.	A portion of license Held by Situate near On map sheet	
From:	6037F	INVESTIA FINANCIAL SERVICES INC.		
2008-11-24	59223	JMAX GLOBAL DISTRIBUTORS INC.	A portion of license Held by Situate near On map sheet	
From:	57272	JMAX GLOBAL DISTRIBUTORS INC.		

Total Registrations for Amalgamation: 7

DOUG LAING
Registrar of Companies

Dec 19

MINERAL ACT

NOTICE

Published in accordance with section 62 of CNLR 1143/96 under the *Mineral Act*, cM-12, RSNL 1990 as amended.

Published in accordance with Section 62 of the Consolidated Mineral Regulations 1143/96.

Mineral rights to the following mineral licenses have reverted to the Crown:

Mineral License 005698M
Held by SVB Nickel Company Ltd
Situate near Harp Lake North
On map sheet 13M/09 13M/08

Mineral License 013881M
Held by Vale Inco Limited
Situate near Kogaluk River
On map sheet 14C/04

Mineral License 012684M
Held by Tripple Uranium Resources Inc.
Situate near Alexis River
On map sheet 13A/10

Mineral License 013798M
Held by Parly, Gerald
Situate near Loon Harbour, Central NL
On map sheet 02E/02 02E/07

Mineral License 013802M
Held by Fancey, Derrick
Situate near Indian Bay Pond, Central NL
On map sheet 02E/01

Mineral License 013804M
Held by LeDrew, Donald
Situate near Indian Bay Pond, Central NL
On map sheet 02E/01

Mineral License 013805M
Held by George, Calvin
Situate near Noel Pauls Brook, Central NL
On map sheet 12A/09

Mineral License 013806M
Held by Lannon, Rosalind

Situate near On map sheet	Noel Pauls Brook, Central NL 12A/09	A portion of license Held by	014020M Altius Resources Inc.
Mineral License Held by	013813M White, Derek R.	Situate near On map sheet	Sheffield Lake Area, Central NL 12H/02 12H/07
Situate near On map sheet	Bill Shears Pond, Western NL 12B/02	more particularly described in an application on file at Department of Natural Resources	
Mineral License Held by	013814M White, Derek R.	A portion of license Held by	014021M Altius Resources Inc.
Situate near On map sheet	Bluchers Pond, Western NL 12B/02	Situate near On map sheet	Sheffield Lake Area, Central NL 12H/08 12H/07
A portion of license Held by		more particularly described in an application on file at Department of Natural Resources	
Situate near On map sheet	Sheffield Lake, Central NL 12H/02 12H/07	A portion of license Held by	014022M Altius Resources Inc.
more particularly described in an application on file at Department of Natural Resources		Situate near On map sheet	West Pond, Central NL 12H/08
A portion of license Held by		more particularly described in an application on file at Department of Natural Resources	
Situate near On map sheet	Sheffield Lake, Central NL 12H/08 12H/07	A portion of license Held by	014023M Altius Resources Inc.
more particularly described in an application on file at Department of Natural Resources		Situate near On map sheet	Sheffield Lake Area, Central NL 12H/01 12H/02 12H/08 12H/07
A portion of license Held by		more particularly described in an application on file at Department of Natural Resources	
Situate near On map sheet	Birchy Lake Brook, Central NL 12H/08 12H/07	A portion of license Held by	014024M Altius Resources Inc.
more particularly described in an application on file at Department of Natural Resources		Situate near On map sheet	Barneys Brook, Central NL 12H/08
A portion of license Held by		more particularly described in an application on file at Department of Natural Resources	
Situate near On map sheet	Burnt Berry Brook, Central NL 12H/08	A portion of license Held by	014025M Altius Resources Inc.
more particularly described in an application on file at Department of Natural Resources		Situate near On map sheet	Rowsells Brook, Central NL 12H/01 12H/08
A portion of license Held by		more particularly described in an application on file at Department of Natural Resources	
Situate near On map sheet	Sheffield Lake Area, Central NL 12H/08	A portion of license Held by	014026M Altius Resources Inc.
more particularly described in an application on file at Department of Natural Resources		Situate near On map sheet	Gaff Topsail, Central NL 12H/02
A portion of license Held by		more particularly described in an application on file at Department of Natural Resources	
Situate near On map sheet	Upper Burnt Berry Pond, Central NL 12H/08	A portion of license Held by	014027M Altius Resources Inc.
more particularly described in an application on file at Department of Natural Resources		Situate near On map sheet	Barneys Brook, Central NL 12H/02
A portion of license Held by		more particularly described in an application on file at Department of Natural Resources	
Situate near On map sheet	Sheffield Lake, Central NL 12H/08 12H/07	A portion of license Held by	014028M Altius Resources Inc.
more particularly described in an application on file at Department of Natural Resources		Situate near On map sheet	Barneys Brook, Central NL 12H/01 12H/02
A portion of license Held by		more particularly described in an application on file at Department of Natural Resources	

A portion of license 014029M
Held by Altius Resources Inc.
Situates near Long Steady Pond, Central NL
On map sheet 12H/01 12H/08
more particularly described in an application on file at
Department of Natural Resources

A portion of license 014030M
Held by Altius Resources Inc.
Situates near Little Sandy Pond, Central NL
On map sheet 12H/01
more particularly described in an application on file at
Department of Natural Resources

A portion of license 014031M
Held by Altius Resources Inc.
Situates near Mizzen Topsail, Central NL
On map sheet 12H/01 12H/02
more particularly described in an application on file at
Department of Natural Resources

A portion of license 014032M
Held by Altius Resources Inc.
Situates near Three Corner Pond, Central NL
On map sheet 12H/01
more particularly described in an application on file at
Department of Natural Resources

A portion of license 014033M
Held by Altius Resources Inc.
Situates near Three Corner Pond, Central NL
On map sheet 12H/01
more particularly described in an application on file at
Department of Natural Resources

A portion of license 014034M
Held by Altius Resources Inc.
Situates near Little Sandy Pond, Central NL
On map sheet 12H/01 12H/02
more particularly described in an application on file at
Department of Natural Resources

A portion of license 014035M
Held by Altius Resources Inc.
Situates near Sheffield Lake Area, Central NL
On map sheet 12H/02
more particularly described in an application on file at
Department of Natural Resources

A portion of license 014036M
Held by Altius Resources Inc.
Situates near South Pond, Central NL
On map sheet 12H/08
more particularly described in an application on file at
Department of Natural Resources

A portion of license 014037M
Held by Altius Resources Inc.
Situates near Little Sandy Pond, Central NL
On map sheet 12H/01
more particularly described in an application on file at
Department of Natural Resources

A portion of license 014038M
Held by Altius Resources Inc.
Situates near Grand Lake, Central NL
On map sheet 12A/14 12H/03
more particularly described in an application on file at
Department of Natural Resources

A portion of license 014039M
Held by Altius Resources Inc.
Situates near Grand Lake, Central NL
On map sheet 12A/14 12H/03
more particularly described in an application on file at
Department of Natural Resources

A portion of license 014041M
Held by Altius Resources Inc.
Situates near Howley, Western NL
On map sheet 12H/03
more particularly described in an application on file at
Department of Natural Resources

A portion of license 014043M
Held by Altius Resources Inc.
Situates near Hinds Brook, Central NL
On map sheet 12H/03
more particularly described in an application on file at
Department of Natural Resources

A portion of license 014045M
Held by Altius Resources Inc.
Situates near Shanadithit Brook, West Central NL
On map sheet 12A/14
more particularly described in an application on file at
Department of Natural Resources

A portion of license 014048M
Held by Altius Resources Inc.
Situates near Shanadithit Brook, West - Central NL
On map sheet 12A/15 12A/14
more particularly described in an application on file at
Department of Natural Resources

A portion of license 014049M
Held by Altius Resources Inc.
Situates near Shanadithit Brook Area,
West - Central NL
On map sheet 12A/14
more particularly described in an application on file at
Department of Natural Resources

A portion of license 014051M
Held by Altius Resources Inc.
Situates near Shanadithit Brook Area,
West - Central NL
On map sheet 12A/11 12A/15 12A/14
more particularly described in an application on file at
Department of Natural Resources

A portion of license 014052M
Held by Altius Resources Inc.
Situates near Red Indian Brook North, Central NL
On map sheet 12A/11 12A/12 12A/14 12A/13

more particularly described in an application on file at
Department of Natural Resources

A portion of license 014053M
Held by Altius Resources Inc.
Situates near Red Indian Brook East, Central NL
On map sheet 12A/11

more particularly described in an application on file at
Department of Natural Resources

A portion of license 014055M
Held by Altius Resources Inc.
Situates near Northeast of Buchans, Central NL
On map sheet 12A/15

more particularly described in an application on file at
Department of Natural Resources

A portion of license 014056M
Held by Altius Resources Inc.
Situates near Northeast of Buchans, Central NL
On map sheet 12A/15

more particularly described in an application on file at
Department of Natural Resources

A portion of license 014057M
Held by Altius Resources Inc.
Situates near East of Buchans, Central NL
On map sheet 12A/15

more particularly described in an application on file at
Department of Natural Resources

A portion of license 014058M
Held by Altius Resources Inc.
Situates near Buchans Brook, Central NL
On map sheet 12A/15

more particularly described in an application on file at
Department of Natural Resources

A portion of license 014064M
Held by Altius Resources Inc.
Situates near Hinds Lake Area, Central NL
On map sheet 12A/15 12A/14

more particularly described in an application on file at
Department of Natural Resources

A portion of license 014066M
Held by Altius Resources Inc.
Situates near Eclipse Pond, Central NL
On map sheet 12A/15 12H/02

more particularly described in an application on file at
Department of Natural Resources

A portion of license 014067M
Held by Altius Resources Inc.
Situates near Wolf Pond, Central NL
On map sheet 12H/02

more particularly described in an application on file at
Department of Natural Resources

A portion of license 014068M
Held by Altius Resources Inc.
Situates near East of Hinds Lake, Central NL
On map sheet 12A/15 12H/02

more particularly described in an application on file at
Department of Natural Resources

A portion of license 014093M
Held by Keats, Allan E. T.
Situates near Noble Pond, Baie Verte Peninsula
On map sheet 02E/13 12H/16

more particularly described in an application on file at
Department of Natural Resources

A portion of license 014094M
Held by Keats, Allan E. T.
Situates near Glass Hill East Pond,
Baie Verte Peninsula

On map sheet 02E/12 12H/09 02E/13 12H/16
more particularly described in an application on file at
Department of Natural Resources

A portion of license 014443M
Held by Altius Resources Inc.
Situates near Sandy Lake, Central NL
On map sheet 12H/02 12H/03

more particularly described in an application on file at
Department of Natural Resources

A portion of license 015135M
Held by Altius Resources Inc.
Situates near Grand Lake, Central NL
On map sheet 12A/14 12H/03

more particularly described in an application on file at
Department of Natural Resources

The lands covered by this notice except for the lands within
Exempt Mineral Lands, the Exempt Mineral Lands being
described in CNLR1143/96 and NLR71/98, 104/98,
97/2000, 36/2001, 31/2004, 78/2006 and 8/2008 and
outlined on 1:50 000 scale digital maps maintained by the
Department of Natural Resources, will be open for staking
after the hour of 9:00 a.m. on the 32nd clear day after the
date of this publication.

JIM HINCHEY P. Geo
Manager - Mineral Rights

File # 774: 2853, 4031, 5361, 5584, 6315, 7558, 7560,
7561, 7563, 8620, 8624, 8626, 8627, 8628, 8635, 8636,
8819, 8820, 8821, 8822, 8824, 8825, 8826, 8827, 8828,
8829, 8830, 8831, 8832, 8833, 8834, 8835, 8836, 8837,
8838, 8839, 8840, 8841, 8842, 8843, 8844, 8845, 8846,
8848, 8850, 8852, 8855, 8856, 8858, 8859, 8860, 8862,
8863, 8864, 8865, 8871, 8873, 8874, 8875, 8899, 8900,
9204, 9721

Dec 19

CANADA-NEWFOUNDLAND ATLANTIC ACCORD IMPLEMENTATION ACT

**CANADA-NEWFOUNDLAND AND LABRADOR ATLANTIC ACCORD IMPLEMENTATION
NEWFOUNDLAND AND LABRADOR ACT**

**CANADA-NEWFOUNDLAND AND LABRADOR OFFSHORE PETROLEUM BOARD
CALL FOR BIDS No. NL08-3**

The Canada-Newfoundland and Labrador Offshore Petroleum Board hereby gives notice of the bid which has been selected in response to Call for Bids No. NL08-3 in the Newfoundland and Labrador Offshore Area. A summary of the terms and conditions applicable to the call was published in the *The Newfoundland and Labrador Gazette*, on July 11, 2008.

This notice is made pursuant to and subject to the *Canada-Newfoundland Atlantic Accord Implementation Act*, S.C., 1987, c. 3, and the *Canada-Newfoundland and Labrador Atlantic Accord Implementation Newfoundland and Labrador Act*, RSNL, 1990, cC-2.

Pursuant to Call for Bids No. NL08-3, bids were to be submitted in a prescribed form and were to contain only the information required on this form. In accordance with this requirement, the following bid was conditionally selected. Subject to Ministerial approval, the Board will issue an Exploration Licence for the parcel in January 2009:

Parcel No. 1

Work Expenditure Bid		\$1,800,000.00
Bid Deposit		\$10,000.00
Bidders, with participating shares:	Husky Oil Operations Limited	100%

Designated Representative Husky Oil Operations Limited

Further information, including the full text of the Call for Bids No. NL08-3, may be obtained by contacting Ms. Susan Gover, Legal and Land, Canada-Newfoundland and Labrador Offshore Petroleum Board, Fifth Floor, TD Place, 140 Water Street, St. John's, Newfoundland and Labrador, A1C 6H6.

MAX RUELOKKE, P.Eng.
Chairman & CEO

Dec 19

**CANADA-NEWFOUNDLAND AND LABRADOR OFFSHORE PETROLEUM BOARD
CALL FOR BIDS No. NL08-4**

The Canada-Newfoundland and Labrador Offshore Petroleum Board hereby gives notice of the bid which has been selected in response to Call for Bids No. NL08-4 in the Newfoundland and Labrador Offshore Area. A summary of the terms and conditions applicable to the call was published in the *The Newfoundland and Labrador Gazette*, on July 11, 2008.

This notice is made pursuant to and subject to the *Canada-Newfoundland Atlantic Accord Implementation Act*, S.C., 1987, c. 3, and the *Canada-Newfoundland and Labrador Atlantic Accord Implementation Newfoundland and Labrador Act*, RSNL, 1990, cC-2.

Pursuant to Call for Bids No. NL08-4, bids were to be submitted in a prescribed form and were to contain only the information required on this form. In accordance with this requirement, the following bid was conditionally selected. Subject to Ministerial approval, the Board will issue an Exploration Licence for the parcel in January 2009:

Parcel No. 1

Work Expenditure Bid		\$600,000.00
Bid Deposit		\$10,000.00
Bidders, with participating shares:	PDI Production Inc.	100%
Designated Representative	PDI Production Inc	

Further information, including the full text of the Call for Bids No.NL08-4 may be obtained by contacting Ms. Susan Gover, Legal and Land, Canada-Newfoundland and Labrador Offshore Petroleum Board, Fifth Floor, TD Place, 140 Water Street, St. John's, Newfoundland and Labrador, A1C 6H6.

MAX RUELOKKE, P.Eng.
Chairman & CEO

Dec 19

URBAN AND RURAL PLANNING ACT

**NOTICE OF REGISTRATION
TOWN OF FORTEAU
MUNICIPAL PLAN AMENDMENT NO. 6, 2008
AND
DEVELOPMENT REGULATIONS
AMENDMENT NO. 8, 2008**

Take notice that the Town of Forteau Municipal Plan Amendment No. 6, 2008 and Development Regulations Amendment No. 8, 2008 adopted on the 12th day of August, 2008 and approved on the 17th day of November, 2008, have been registered by the Minister of Municipal Affairs.

In general terms the purpose of the amendments is to accommodate a dwelling on the harbour side of Lower Harbour Drive by redesignating this parcel of land from Conservation to Residential, and rezoning it from Conservation (OC) to Residential Medium Density (RMD).

The Municipal Plan Amendment No. 6, 2008, and Development Regulations Amendment No. 8, 2008 come into effect on the day that this notice is published in *The Newfoundland and Labrador Gazette*.

Anyone who wishes to inspect a copy of the Forteau Municipal Plan Amendment No. 6, 2008 and Development Regulations Amendment No. 8, 2008 may do so at the Forteau Town Office during normal working hours.

TOWN OF FORTEAU
Gail Flynn, Town Clerk

Dec 19

CHANGE OF NAME ACT

C-8 RSNL 1990

**NOTICE OF APPLICATION
FOR CHANGE OF NAME**

NOTICE is hereby given that an application will be made to the Minister of Government Services for a change of name, pursuant to the provisions of the *Change of Name Act*, by me:-

KATRINA MARY AYLWARD

of P. O. Box 185, Port Au Choix, A0K 4C0, in the Province of Newfoundland and Labrador, as follows:

To change my name from

KATRINA MARY AYLWARD
to
KATRINA MARY ALYWARD

DATED this 8th day of December, 2008.

KATRINA MARY AYLWARD
(Signature of Applicant)

Dec 19

**NOTICE OF APPLICATION
FOR CHANGE OF NAME**

NOTICE is hereby given that an application will be made to the Minister of Government Services for a change of name, pursuant to the provisions of the *Change of Name Act*, by me:-

MICHAEL JOSEPH BENOIT
of P. O. Box 551, 13 Church Street, Stephenville Crossing,
A0N 2C0, in the Province of Newfoundland and Labrador,
as follows:

To change my name from
MICHAEL JOSEPH BENOIT
to
MICHAEL JOSEPH BENNETT

DATED this 2nd day of December, 2008.

MICHAEL JOSEPH BENOIT
(Signature of Applicant)

Dec 19

**NOTICE OF APPLICATION
FOR CHANGE OF NAME**

NOTICE is hereby given that an application will be made
to the Minister of Government Services for a change of
name, pursuant to the provisions of the *Change of Name
Act*, by me:-

ROCHELLE MARIE ALEXANDER

of 7 Brumsey Drive, Stephenville Crossing, in the Province
of Newfoundland and Labrador, as follows:

To change my minor unmarried child's name from

BRITTNEY RAE ALEXANDER
to
BRITTNEY RAE LUCAS

DATED this 3rd day of December, 2008.

ROCHELLE MARIE ALEXANDER
(Signature of Applicant)

Dec 19

**NOTICE OF APPLICATION
FOR CHANGE OF NAME**

NOTICE is hereby given that an application will be made
to the Minister of Government Services for a change of
name, pursuant to the provisions of the *Change of Name
Act*, by me:-

LORI ANNE MARCH

of 2A Western Gully Road, Portugal Cove-St. Philips, in
the Province of Newfoundland and Labrador, as follows:

To change my minor unmarried child's name from

DYLAN NICHOLAS HAMMOND
to
DYLAN NICHOLAS MARCH

DATED this 3rd day of December, 2008.

LORI ANNE MARCH
(Signature of Applicant)

Dec 19

**NOTICE OF APPLICATION
FOR CHANGE OF NAME**

NOTICE is hereby given that an application will be made
to the Minister of Government Services for a change of
name, pursuant to the provisions of the *Change of Name
Act*, by me:-

CORY JOHNSON

of 32 Peachytown Road, Conception Bay South, A1X 7C1,
in the Province of Newfoundland and Labrador, as follows:

To change my minor unmarried children's name from

CORY KEVIN RAYMOND GREELEY
to
CORY KEVIN RAYMOND JOHNSON

VADEN GARFIELD GREELEY
to
VADEN GARFIELD JOHNSON

DATED this 8th day of December, 2008.

CORY JOHNSON
(Signature of Applicant)

Dec 19

**NOTICE OF APPLICATION
FOR CHANGE OF NAME**

NOTICE is hereby given that an application will be made
to the Minister of Government Services for a change of
name, pursuant to the provisions of the *Change of Name
Act*, by me:-

DAPHNE ANN HAWKINS

of General Delivery, School Road, Tors Cove, in the
Province of Newfoundland and Labrador, as follows:

To change my minor unmarried child's name from

FAITH MARY CLARKE
to
FAITH MARY HAWKINS

DATED this 15th day of December, 2008.

DAPHNE ANN HAWKINS
(Signature of Applicant)


Dec 19

Legal Name Changes
Processed During the Period
NOVEMBER, 2008

Under the authority vested in me by The Change of Name Act, Chapter C-8 of The Revised Statutes of Newfoundland, 1990, I hereby certify that the following names have been changed.

<u>Former Name</u>	<u>Present Name</u>	<u>Address</u>	<u>District</u>
Belmont, Christian Cardell Avery Aaron	Granfell-Belmont, Christian Cardell Avery Aaron Michel Gould Corbet	Corner Brook	Humber East
Winsor, Peyton Bobbie-Ann	O'Keefe, Peyton Bobbie-Ann	Corner Brook	Humber West
Fillier, Johnathon Robert Stanley	Payne, Johnathon Robert Stanley	Labrador City	Labrador West
Oake, Kayla Blanche Alice	Foss, Kayla Blanche Alice	LaScie	Baie Verte
Lannon-Foley, Owen Anthony	Foley, Owen Anthony	Point Verde	Placentia & St. Mary's
Needley, Rylan Michael James	Peddle, Rylan Michael James	Corner Brook	Humber West
Pike, Sabrina Margaret	Guest, Sabrina Margaret	St. John's	St. John's South
Vanrooyen, Bryzon Andrew Russell	Tremblott, Bryzon Andrew Russell	Gander	Gander
Harris, Michelle Elsie Margaret	Edwards, Michelle Harris	Gander	Gander
Rodgers, Chloe Sara Marie	Madden, Chloe Sara Marie	Kilbride	St. John's
Abbas, Ghulam	Dogar, Ghulam Abbas	Grand Falls-Windsor	Windsor-Springdale
Powell, Dylan Bryant	Woodward, Dylan Bryant	Happy Valley-Goose Bay	Lake Melville
Park, Nathan Clary	Dempster, Nathan Clary Applin	Plum Point	St. Barbe
Biggin, Randi Bride Gertrude	Diamond, Randi Bride Gertrude	Corner Brook	Humber West
Keates, Annie Kathleen	Keats, Annie Kathleen	Benton	Gander
Duggan, Jennifer Kirby	Legrow, Jennifer Kirby Duggan	Benton	Cape St. Francis
Luscombe, Chloe Marissa	Harris, Chloe Marissa	Buchans	Grand Falls-Buchans
Shepherd, Mataya Lynn Rose	Briston, Mataya Lynn Rose	North Harbour	Placentia & St. Mary's
Mesher, Cameron Leigh	Edwards, Cameron Leigh	Labrador City	Labrador West
Lynch, Dylan Shawn	Mercer, Dylan Shawn	Spaniard's Bay	Port De Grave
Kendall, Desmond Daniel	Campbell, Desmond Daniel	Stephenville	St. George's-Stephenville East
Gillard, Samuel Frederick Hugh	Boone-Gillard, Samuel Frederick Hugh	St. John's	St. John's Centre
Walsh, Robert John Michael	Thorne-Walsh, Robert John Michael Leonard	Portugal Cove-St. Philip's	CBE & Bell Island
Thorne, Samantha	Christopher, Samantha Laue	South River	Harbour Main-Whitbourne
Kates, Theodore	Keats, Theodore	Gander	Gander
Taylor, Justin Francis	O'Reilly, Justin Francis	Tors Cove	Ferryland
Ford, Virginia Rita	Drew, Virginia Rita	Mount Pearl	Mount Pearl
Bragg, Beth Patricia	Leriche, Beth Patricia	Channel-Port aux Basques	Burgoe & La Poile

Dated this 5 day of DEC, 2008



Ken Mullaly
Registrar (A)-Vital Statistics Division
Department of Government Services

**LANDS ACT
NOTICE OF INTENT**

LANDS ACT, c36, SNL 1991

Notice is hereby given that Robert and Patti Oldford of St. Philip's, NL intends to apply to the Department of Environment and Conservation, two months from the publication of this Notice, to acquire title, pursuant to Section 7(2) of the said Act, to that piece of Crown Land situated within fifteen (15) metres of the waters of Holletts Cove, Burnside, in the Electoral District of Terra Nova for the purpose of building a floating wharf, 7m x 5m boat house and 3m by 3m kiosk for sea kayaking business and being more particularly described as follows:

*Bounded on the North by Water (Holletts Cove)
for a distance of 10 m;
Bounded on the East by Water (Holletts Cove)
for a distance of 15 m;
Bounded on the South by Water (Holletts Cove)
for a distance of 10 m;
Bounded on the West by Burnside Road (Route 310-32)
for a distance of 15 m;
and containing an area of
approximately 150 square metres.*

Any person wishing to object to the application must file the objection, in writing, within one month from the publication of this notice, with reasons for it, to the Minister of Environment and Conservation, and mail to the nearest Regional Lands Office:

c/o Eastern Regional Lands Office, P. O. Box 8700, 5 Mews Place, St. John's, NL, A1B 4J6.

c/o Central Regional Lands Office, P. O. Box 2222, Gander, NL, A1V 2N9.

c/o Western Regional Lands Office, P. O. Box 2006, Noton Building, Corner Brook, NL, A2H 6J8.

c/o Labrador Regional Lands Office, P. O. Box 3014, Station "B", Happy Valley-Goose Bay, NL A0P 1E0.

For further information on the proposed application, please contact Robert Oldford, Telephone (709) 895-0620.

Dec 19

QUIETING OF TITLES ACT

**2008 01T No. 4348
IN THE SUPREME COURT OF
NEWFOUNDLAND AND LABRADOR
TRIAL DIVISION**

IN THE MATTER OF the *Quieting of Titles Act*, cQ-3 of the RSNL, 1990, and amendments thereto,

AND IN THE MATTER OF all that piece or parcel of land situate and being on the southerly side of the Main Road at Portland, Bonavista Bay, in the Province of Newfoundland and Labrador.

AND IN THE MATTER OF an Application of GILBERT ASH of Portland, Bonavista Bay in the Province of Newfoundland and Labrador, Mill Owner.

**NOTICE OF APPLICATION
under the
Quieting of Titles Act, cQ-3, RSNL 1990.**

NOTICE IS HEREBY GIVEN to all parties that GILBERT ASH, of Portland, Bonavista Bay, in the Province of Newfoundland and Labrador, has applied to the Supreme Court of Newfoundland and Labrador, Trial Division, to have it's title to all that piece or parcel of land situate and being on the southerly side of the Main Road at Portland, Bonavista Bay, in the Province of Newfoundland and Labrador, and more particularly described on the Schedule "A" and delineated on the survey hereto annexed marked "B" to which GILBERT ASH is the absolute owner thereof. ALL PERSONS having title adverse to the said title claimed by the said GILBERT ASH claims to the the owner, investigated for a declaration that the said GILBERT ASH is the absolute owner thereof. All persons having title adverse to the said title claimed by the said GILBERT ASH shall file in the Registry of the Supreme Court of Newfoundland and Labrador, Trial Division, at St. John's, in the Province of Newfoundland and Labrador, particulars of such adverse claim and serve same together with an Affidavit certifying the same to the undersigned solicitors for the Applicant on or before the 12th day of January, 2009, after which date no party having any claim shall be permitted to file the same or to be heard except by special leave of the court and subject to such conditions as the Court may deem just. All adverse claims shall be investigated in such manner as the Supreme Court may direct.

Dated at St. John's, in the Province of Newfoundland and Labrador, this 11th day of December, 2008.

MERCER, MACNAB, VAVASOUR & FAGAN
Solicitors for the Applicants
PER: James E.G. Vavasour, Q.C.

ADDRESS FOR SERVICE:

P. O. Box 1055
70 Portugal Cove Road
St. John's, NL A1C 5M5
Tel: (709) 726-8844
Fax: (709) 726-5705

**SCHEDULE "A"
GILBERT ASH, Portland, NL
Parcel 08-1; Job 08-071-1**

ALL THAT piece or parcel of land situate at Portland, in the Electoral District of Bonavista South, in the Province of Newfoundland and Labrador, abutted and bounded as follows: that is to say

BEGINNING at a point, said point having. Grid Co-ordinates N 5 363 380.651, E 243 036.694, as referred to the meridian of (53) degrees west longitude of the Three

Degree Transverse Mercator Projection (NAD 83-1992 adjustment)

THENCE running along the easterly limit the Main Road, following the arc of a curve having a radius of (135,00) metres, for an arc distance of (80.450) metres, to a point being distant (79.265) metres as measured on a bearing of North (15) degrees (04) minutes (00) seconds east from the point of beginning;

THENCE north (02) degrees (00) minutes (19) seconds west, a distance of (62.026) metres;

THENCE following the arc of a curve having a radius of (415.153) metres, for an arc distance of (52.525) metres, to a point being distant (52.490) metres as measured on a bearing of north (01) degree (37) minutes (09) seconds east from the previously described point;

THENCE north (05) degrees (14) minutes (38) seconds east, a distance of (50.732) metres;

THENCE running by land granted to William Cox, as registered at the Crown Land Registry in Volume 01, Folio 98, south (34) degrees (14) minutes (46) seconds east, a distance of (156.058) metres;

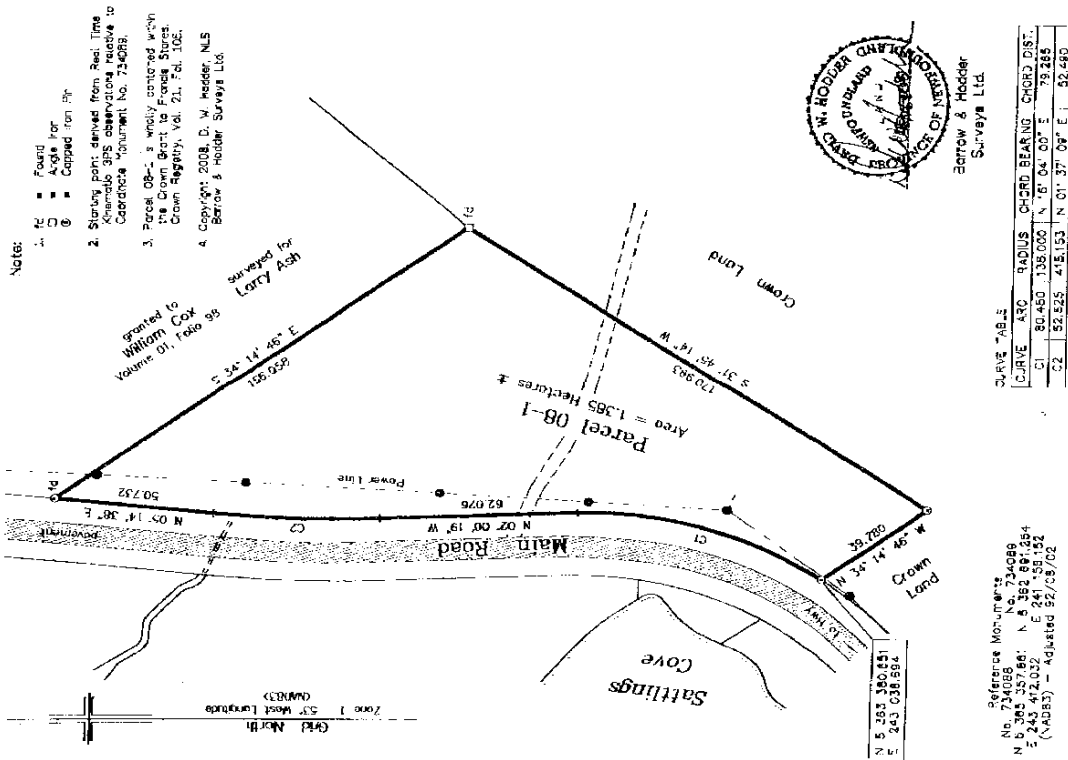
THENCE running by Crown Land, south (31) degrees (45) minutes (14) seconds west, a distance of (170.993) metres;

THENCE north (34) degrees (14) minutes (46) seconds west, a distance of (39.780) metres, more or less, to the point of beginning and being more particularly shown and delineated on the attached plan,

CONTAINING an area of (1.385) Hectares, more or less:
ALL BEARINGS being referred to the meridian of (53) degrees west longitude of the Three Degree Transverse Mercator Projection (NAD 83)

D.W. Hodder, NLS
Barrow & Hodder Surveys Ltd.

Schedule "B"



PLAN SHOWING LAND SURVEYED FOR
Gilbert Ash
Portland, NL

2008 01 T 3381
IN THE SUPREME COURT OF
NEWFOUNDLAND AND LABRADOR
TRIAL DIVISION

IN THE MATTER OF the *Quieting of Titles Act*, cQ-3 of the RSNL 1990, and amendments thereto,

AND IN THE MATTER of all that piece or parcel of land situate and being in the cabin area of Doyles, on the Northern side of Malcolm's Road in the province of Newfoundland and Labrador, Canada.

AND IN THE MATTER OF an Application by GLENN SWAIN, of the town of Carbonear, Province of Newfoundland and Labrador.

NOTICE OF APPLICATION under the *Quieting of Titles Act*, cQ-3, RSNL 1990

NOTICE IS HEREBY GIVEN to all parties, that GLENN SWAIN has applied to the Supreme Court of Newfoundland and Labrador, Trial Division, to have the title to ALL THAT piece or parcel of land situate and being, in the cabin area of Doyles, on the Northern side of Malcolm's Road, in the province of Newfoundland and Labrador, and being more particularly described in the schedule hereto annexed marked "A" and delineated on the survey hereto annexed marked "B" to which the said GLENN SWAIN claims to be the owner, investigated and for a declaration of absolute ownership fee from the exceptions and qualifications in s.22 of the *Quieting of Titles Act* thereof.

ALL PERSONS having title adverse of the said title claimed by the said GLENN SWAIN, shall file at the Registry of the Supreme Court of Newfoundland and Labrador, Trial Division, at St. John's, in the Province of Newfoundland and Labrador, particulars of such adverse claim and serve the same together with an Affidavit certifying the same, to GLENN SWAIN on or before 19th day of January, 2009 after which date no party having any claim shall be permitted to file the same or be heard except by special leave of the court and subject to such conditions as the court may deem just.

All adverse claims shall then be investigated in such manner as the said Court may direct.

DATED at Carbonear, NL, this 10th day of December, 2008.

GLENN SWAIN

ADDRESS FOR SERVICE:
4 Osmond's Lane
Carbonear, NL
A1Y 1A9
Tel: (709) 596-0774

SCHEDULE 'A'

Description
Malcolm's Road, Doyles, NL

All that piece or parcel of land situate and being at Doyles, District of St. George's-Stephenville East, Newfoundland and Labrador, Canada abutted and bounded as follows,

This is to say: Beginning at a point being S 89° 21' 32" W a distance of 2095.567 metres from Control Monument number 84G4188,

Thence by land of Tom Tobin S 10° 23' 39" W a distance of 119.809 metres,

Thence by land of David Rixon S 38° 36' 34" E a distance of 52.951 metres,

Thence S 37° 49' 30" E a distance of 125.034 metres,

Thence by the sideline of Malcolm's Road N 62° 36' 34" E a distance of 110.774 metres,

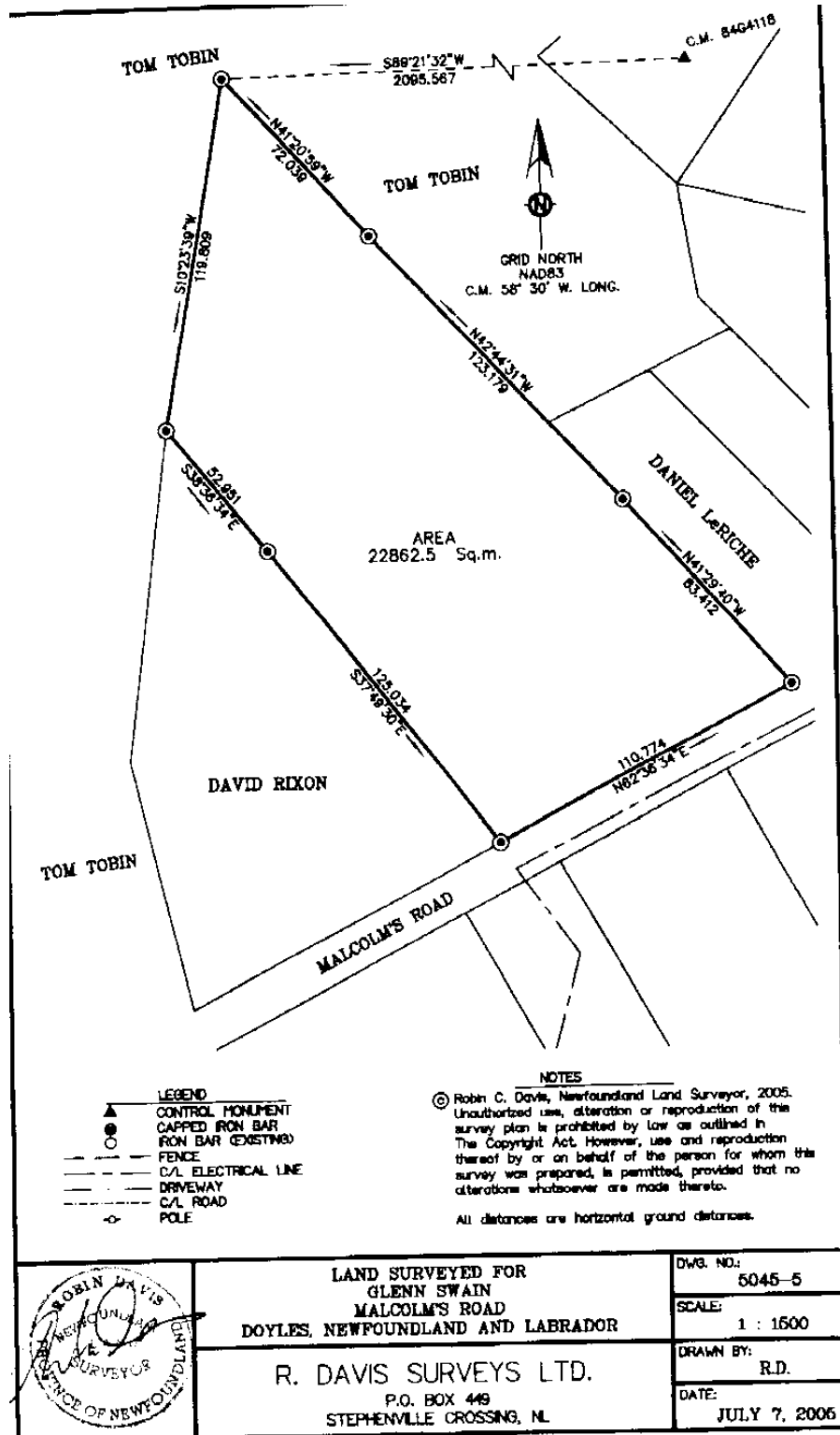
Thence by land of Daniel Leriche N 41° 29' 40" W a distance of 83.412 metres,

Thence by land of Daniel Leriche and Tom Tobin N 42° 44' 31" W a distance of 123.179 metres,

Thence by land of Tom Tobin N 41° 20' 59" W a distance of 72.039 metres to the point of beginning.

The herein described parcel of land contains an area of 22862.5 square metres and is more particularly delineated on the plan number 5045-5 hereto attached.

All bearings refer to the meridian of fifty-eight degrees thirty minutes west longitude of the Three Degree Transverse Mercator Projection (NAD83).





THE NEWFOUNDLAND AND LABRADOR GAZETTE

PART II

SUBORDINATE LEGISLATION FILED UNDER THE STATUTES AND SUBORDINATE LEGISLATION ACT

Vol. 83

ST. JOHN'S, FRIDAY, DECEMBER 19, 2008

No. 51

NEWFOUNDLAND AND LABRADOR REGULATIONS

NLR 75/08

NLR 76/08



NEWFOUNDLAND AND LABRADOR REGULATION 75/08

Rules of the Supreme Court, 1986 (Amendment)
under the
Judicature Act

(Filed December 18, 2008)

Under the authority of section 55 of the *Judicature Act*, the Rules Committee of the Trial Division makes the following rules.

Dated at St. John's, December 17, 2008.

Christopher P. Curran, Q.C.
Registrar of the Supreme Court
Secretary, Rules Committee

RULES

Analysis

- | | | |
|--|--------|--|
| 1. Division XI Added | | <i>Family Law Rules</i> |
| Applications for the Return of a Child under the Hague Convention on International Child Abduction | 56A.76 | Commencing an application for the return of a child |
| | 56A.77 | Service of the application |
| 56A.72 Definitions | 56A.78 | Notice to the central authority and the contact judge |
| 56A.73 Use of these Rules | 56A.79 | Responding to an application for the return of a child |
| 56A.74 Proceedings shall be dealt with expeditiously | | |
| 56A.75 Application of the | | |

56A.80	How to oppose a claim	56A.86	Family Justice Services
56A.81	How to respond without opposing	56A.87	Case management
56A.82	Default	2.	Forms 56A.76A, 56A.76B and 56A.78A Added
56A.83	Hearings	3.	Commencement
56A.84	Disposition		
56A.85	Order		

1. Rule 56A of the Rules of the Supreme Court, 1986 is amended by adding immediately after rule 56A.71 the following:

**Division XI
Applications for the Return of a Child under the
Hague Convention on International
Child Abduction**

Definitions

56A.72. In this division,

- (a) "central authority" is the person so designated for each contracting state under Article 6 of the Hague Convention on International Child Abduction;
- (b) "contact judge" is the person so designated in the province of Newfoundland and Labrador to ensure that interjurisdictional cases of parental child abduction are dealt with expeditiously;
- (c) "contracting state" means a country that is a signatory to the Hague Convention on International Child Abduction; and
- (d) "Hague Convention on International Child Abduction" means the Convention on the Civil Aspects of International Child Abduction as set out as a schedule to the *Children's Law Act*.

Use of these rules

56A.73. (1) The rules in this division apply to the wrongful removal or retention of a child occurring in a contracting state under the Hague Convention on International Child Abduction.

(2) The child who has been wrongfully removed or retained must be under the age of 16 years.

(3) Wrongful removal or retention shall have the meaning set out in Article 3 of the Hague Convention on International Child Abduction.

Proceedings shall be dealt with expeditiously

56A.74. All proceedings under this division shall be dealt with expeditiously and these rules shall be interpreted and applied so as to provide the most timely and efficient disposition that is consistent with fairness to the parties involved.

Application of the Family Law Rules

56A.75. The *Family Law Rules* shall apply to all proceedings for the return of a child under the Hague Convention on International Child Abduction unless this division provides otherwise, in which case the rules in this division take precedence.

Commencing an application for the return of a child

56A.76. (1) An application for the return of a child under the Hague Convention on International Child Abduction shall be commenced in the Court by presenting an original and two signed copies of an Originating Application for the Return of a Child in Form 56A.76A.

(2) Applications under this division shall only address the return of a child and shall not include a request for any other relief except for consequential relief related to the return of a child.

(3) Rules 56A.06(5) and 56A.08 apply with respect to applications under this division.

(4) All applications under this division shall be accompanied by affidavit evidence in Form 56A.76B which complies with rule 56A.20 and contains:

- (a) information concerning the identity of the applicant, the child and the person or persons alleged to have removed or retained the child;
- (b) where available, the date of birth of the child;
- (c) the grounds upon which the applicant's claim for the return of the child is based; and
- (d) all available information relating to the whereabouts of the child and the identity of the person in whose care the child is presumed to be.

(5) The application may be accompanied or supplemented by:

- (a) an authenticated copy of any relevant decision or agreement pertaining to custody and/or access of the child;
- (b) a certificate or an affidavit emanating from a central authority of a contracting state, competent authority or other qualified person where the child habitually resides setting out the relevant law of that jurisdiction; or
- (c) any other relevant document.

(6) On receipt by the Court of an application under this division, a first hearing date shall be assigned and noted on the application.

Service of the application

56A.77. (1) The originating application along with

- (a) an affidavit in support of the application under rule 56A.76(4);
- (b) information under rule 56A.76(5) (if applicable); and
- (c) the Notice to Respondent

shall be served personally on the respondent(s) in accordance with rule 6.02 (Personal Service) within 7 days of filing the application with the Court.

(2) If he or she is not named as a respondent, the person with whom the child is presumed to be shall also be personally served with the application.

(3) If timely service cannot be affected, an application may be made to the Court for substituted service or to extend the time for service in accordance with the *Rules of the Supreme Court, 1986*.

Notice to the central authority and the contact judge

56A.78. A Notice of Application to the central authority and contact judge in Form 56A.78A must be filed at the same time as the application under rule 56A.76 and a copy shall forthwith be provided to the central authority of the province of Newfoundland and Labrador and the contact judge.

Responding to an application for the return of a child How to oppose a claim	<p>56A.79. Notwithstanding rules 56A.12 and 56A.13, a response to the originating application shall be filed within 7 days of being served with the originating application unless ordered otherwise.</p> <p>56A.80. (1) Unless ordered otherwise, a respondent who wishes to oppose a claim made in an originating application shall serve and file a response in Form 56A.12A.</p> <p>(2) Rules 56A.12(3) and (4) shall not apply to applications under this division.</p>
How to respond without opposing	<p>56A.81. Rule 56A.13 shall apply to a respondent who does not oppose an application under this division.</p>
Default	<p>56A.82. Rule 56A.15 shall apply to proceedings under this division.</p>
Hearings	<p>56A.83. (1) On the first return date of an application under this division, unless no response has been filed, in which case the Court may determine the application, the Court shall:</p> <ul style="list-style-type: none">(a) establish appropriate timelines for the filing and service of materials; and(b) set the application down for hearing <p>and in carrying out these responsibilities, the Court shall have regard to the requirement for an expeditious determination of the matter.</p> <p>(2) Any party may appear by way of telephone or video conference where appropriate facilities are available if that party makes arrangements at least two days prior to the hearing.</p> <p>(3) Where the Court has notice of the alleged wrongful removal or retention of a child, the Court shall not deal with the merits of rights of custody until an application for return of the child under the Hague Convention on International Child Abduction has been determined, unless a return application is not filed within a reasonable time after notice is given to the Court.</p>
Disposition	<p>56A.84. Applications shall be dealt with expeditiously and except in extraordinary circumstances, decisions shall be rendered within six weeks of the filing of the application.</p>

Order **56A.85.** Unless the order is signed when a judge decides on the merits of the application for return of a child, an appointment shall be made to meet with the same judge to have the order signed within 24 hours of a decision being rendered.

Family Justice Services **56A.86.** Unless otherwise ordered or on the consent of the parties, proceedings with respect to the return of a child under this division shall not be referred to Family Justice Services Division under rule 56C.03.

Case Management **56A.87.** Unless otherwise ordered or on the consent of the parties, proceedings with respect to the return of a child under this division shall not be subject to case management.

2. Rule 56A is amended by adding immediately after Form 56A.64A the following:

Form 56A.76A

(rule 56A.76)

In the Supreme Court of Newfoundland and Labrador
Trial Division/Unified Family Court

Court No. _____

Court File No. _____

Central Divorce Registry No. _____ (if applicable)

BETWEEN: _____ APPLICANT

AND: _____ RESPONDENT

Originating Application for the Return of a Child

To this Honourable Court:

I hereby seek an order for the return of the following child/ren under the Hague Convention on International Child Abduction:

(a) _____, born _____;
(full name of child) *(date of birth)*

(b) _____, born _____;

(full name of child)

(date of birth)

I, _____, the Applicant, declare the contents of the within originating application are true to the best of my information and belief.

SWORN TO OR AFFIRMED at _____, in the Province of Newfoundland and Labrador this _____ of _____, 20 ____.

Commissioner of Oaths/Justice of the Peace

Signature of Applicant(s)
Name/Address of Applicant's Solicitor
(if applicable)

A hearing in this matter will take place on _____, 20____ at _____ am/pm at the courthouse located at _____ in the Province of Newfoundland and Labrador, Canada.

This document, which includes the Originating Application for the Return of a Child, the Affidavit in Support of Originating Application for the Return of a Child and the Notice to Respondent, shall be personally served on the Respondent by an adult other than the Applicant.

Filed at _____, in the Province of Newfoundland and Labrador this _____ day of _____, 20____.

Deputy Registrar/Clerk of the Supreme Court
of Newfoundland and Labrador
Trial Division/Unified Family Court

Form 56A.76B

(rule 56A.76)

In the Supreme Court of Newfoundland and Labrador
Trial Division/Unified Family Court

Court No. _____

Court File No. _____

Central Divorce Registry No. _____ (if applicable)

BETWEEN: _____ APPLICANT

AND: _____ RESPONDENT

**Affidavit in Support of Originating Application
for the Return of a Child**

I, _____, make oath (or affirm) and say as follows:

1. That I am the Applicant in the within matter and have personal knowledge of the matters referred to herein except where otherwise specified.

(set out the reasons that you are making the application)

2.

3.

4.

5.

6. That I make this application in support of my Application for the return of the following child/ren under the Hague Convention on International Child Abduction:

(a) _____, born _____;
(full name of child) *(date of birth)*

(b) _____, born _____;
(full name of child) (date of birth)

SWORN TO OR AFFIRMED at _____, in the Province of
Newfoundland and Labrador this _____ of _____, 20 _____.

Commissioner of Oaths/Justice of the Peace

Signature

In the Supreme Court of Newfoundland and Labrador
Trial Division/Unified Family Court

Court No. _____
Court File No. _____
Central Divorce Registry No. _____ (if applicable)

BETWEEN:

_____ APPLICANT

AND:

_____ RESPONDENT

Notice to Respondent

An Originating Application has been made for an order against you.
The details are set out in the attached Originating Application.

If you dispute the claim, you shall file a Response at the Supreme Court
of Newfoundland and Labrador, Trial Division/Unified Family Court
located in _____, Newfoundland and Labrador,
Canada **within 7 days**.

If you do not file a Response, the Court may determine the application in your absence without giving you further notice.

A hearing in this matter will take place on _____,
20____ at _____ am/pm at the courthouse located at _____
in the Province of Newfoundland and Labrador, Canada.

If you do not attend the hearing, the Court may proceed in your absence.

DATED this _____ day of _____, 20____.

Deputy Registrar/Clerk of the
Supreme Court of Newfoundland and Labrador
Trial Division/Unified Family Court

Form 56A.78A

(rule 56A.78)

In the Supreme Court of Newfoundland and Labrador
Trial Division/Unified Family Court

Court No. _____

Court File No. _____

Central Divorce Registry No. _____ (if applicable)

BETWEEN: _____ APPLICANT

AND: _____ RESPONDENT

Notice of Application to the Central Authority and Contact Judge

TAKE NOTICE that an application for the return of a child under the Hague Convention on International Child Abduction has been made in the above noted proceeding.

A hearing in this matter will take place on _____,
20____ at _____ am/pm at the courthouse located at _____
in the Province of Newfoundland and Labrador, Canada.

Filed at _____, in the Province of Newfoundland
and Labrador this _____ day of _____, 20____.

Deputy Registrar/Clerk of the Supreme Court
of Newfoundland and Labrador
Trial Division/Unified Family Court

Commencement

3. This rule comes into force on January 19, 2009.

©Earl G. Tucker, Queen's Printer



**NEWFOUNDLAND AND LABRADOR
REGULATION 76/08**

Furbearing Animals Trapping and Shooting Order, 2008-2009
under the
Wild Life Regulations
and the
Wild Life Act

(Filed December 18, 2008)

Under the authority of sections 16, 25, 27 and 114 of the *Wild Life Regulations* and the *Wild Life Act*, I make the following Order.

Dated at St. John's, December 17, 2008.

Clyde Jackman
Minister of Environment and Conservation (Acting)

ORDER

Analysis

- | | |
|--------------------------------------|--------------------|
| 1. Short title | 11. Prohibition |
| 2. Open season trapping and shooting | 12. Sunday hunting |
| 3. Prohibitions | 13. Repeal |
| 4. Neck snares | Schedule A |
| 5. Foot hold restraining traps | Schedule B |
| 6. Killing traps | Schedule C |
| 7. Live holding devices | Schedule D |
| 8. Rate of beaver harvest | |
| 9. Lynx | |
| 10. Wolves | |

Schedule E

Short title

1. This Order may be cited as the *Furbearing Animals Trapping and Shooting Order, 2008-2009*.

Open season trapping and shooting

2. (1) The open season for trapping on the Island of Newfoundland, except as provided for in specific management areas described in Schedule A, shall be

Beaver	Oct. 20, 2008 - Mar. 15, 2009
Ermine, weasel	Oct. 20, 2008 - Feb. 28, 2009
Mink	Nov. 1, 2008 - Feb. 28, 2009
Muskrat	Oct. 20, 2008- March 15, 2009
Otter	Oct. 20, 2008 - March 15, 2009
Squirrel	Oct. 20, 2008 - February 28, 2009

(2) The open season for trapping and shooting on the Island of Newfoundland, except as provided for in specific management areas described in Schedule A, shall be

Coyote	Oct. 20, 2008 - Feb. 1, 2009
Fox, coloured	Oct. 20, 2008 - Feb. 1, 2009
Fox, white	Oct. 20, 2008 - Feb.1, 2009
Lynx	Nov. 1, 2008- December 31, 2008

(3) The open seasons for trapping and shooting within Labrador fur management zones as described in Schedule B shall be

(a) Northern Labrador Zone:

Beaver	Oct. 15, 2008 - May 31, 2009
Coyote	Oct. 15, 2008 - March 31, 2009
Ermine, weasel	Oct. 15, 2008 - March 31, 2009
Fox, coloured	Oct. 15, 2008 - March 31, 2009
Fox, white	Oct. 15, 2008 - May 31, 2009

Lynx	Oct. 15, 2008- March 31, 2009
Marten	Oct. 15, 2008 - March 31, 2009
Mink	Nov.1, 2008- March 31, 2009
Muskrat	Oct. 5, 2008 - May 31, 2009
Otter	Oct. 15, 2008 - March 31, 2009
Squirrel	Oct. 15, 2008 - March 31, 2009
Wolf	Oct. 15, 2008 - April 30, 2009
Wolverine	No open season.
Fisher	No open season.

(b) Eastern Labrador Zone:

Beaver	Oct. 15, 2008 - May 31, 2009
Coyote	Oct. 15, 2008 - March 20, 2009
Ermine, weasel	Oct. 15, 2008 - March 20, 2009
Fox, coloured	Oct. 15, 2008 - March 20, 2009
Fox, white	Oct. 15, 2008 - March 20, 2009
Lynx	Oct. 15, 2008- March 20, 2009
Marten	Oct. 15, 2008 - March 20, 2009
Mink	Nov.1, 2008- March 20, 2009
Muskrat	Oct. 15, 2008 - May 31, 2009
Otter	Oct. 15, 2008 - March 20, 2009
Squirrel	Oct. 15, 2008 - March 20, 2009
Wolf	Oct. 25, 2008 - April 30, 2009
Wolverine	No open season.
Fisher	No open season.

(c) Western Labrador Zone:

Beaver	Oct. 15, 2008 - May 31, 2009
Coyote	Nov. 1, 2008 - March 20, 2009
Ermine, weasel	Nov. 1, 2008 - March 20, 2009
Fox, coloured	Nov.1, 2008 - March 20, 2009
Fox, white	Nov. 1, 2008 - March 20, 2009
Lynx	Nov. 1, 2008- March 20, 2009
Marten	Nov. 1, 2008 - March 20, 2009
Mink	Nov.1, 2008- March 20, 2009
Muskrat	Oct. 15, 2008 - May 31, 2009
Otter	Oct. 15, 2008 - March 20, 2009
Squirrel	Nov. 1, 2008 - March 20, 2009
Wolf	Nov. 1, 2008 - April 30, 2009
Wolverine	No open season.
Fisher	No open season.

Prohibitions

3. (1) Notwithstanding section 2,

- (a) the trapping and shooting of lynx is prohibited in areas outside Zone A, known as Zone B, as described in Schedule A; and
- (b) the trapping and shooting of all furbearing animals is prohibited in the following areas:
 - (i) Brunette Island, Fortune Bay, and
 - (ii) Great Southern Harbour.

(2) A person shall not use a killing trap for beaver, muskrat or marten unless the trap is a killing trap described in Schedule C for that wildlife species and the trap is used in accordance with the conditions prescribed in Schedule C.

(3) A person shall not use a trap in the following areas described in Schedule A:

- (a) the Pine Marten Study Area, excluding the Little Grand Lake Ecological Reserve;
- (b) the Main River/ Upper Humber Study Area;
- (c) the Little Grand Lake Wildlife Reserve; and
- (d) the Glover Island Public Reserve, Glover Island

unless the trap is a trap described in Schedule D for each furbearing species and the trap is used in accordance with the requirements of Schedule D.

(4) A person shall not use a trap in the following areas described in Schedule A:

- (a) the North West Grand Lake Area;
- (b) the Charlottetown Enclave Area;
- (c) the Terra Nova Area; and
- (d) the Red Indian Lake Area

unless the trap is a trap described in Schedule E for each furbearing species and the trap is used in accordance with the requirements of Schedule E.

Neck snares

4. (1) Killing neck snares which are set on land for the purpose of taking furbearing animals shall be equipped with a noose locking device which shall be set in a manner so that the noose, once closed, is prevented from expanding.

(2) Subsection (1) shall not apply to the taking of squirrel.

Foot hold restraining traps

5. (1) Foot hold restraining traps set for beaver, muskrat, otter and mink shall be set in a manner which allows the animal to submerge and prevent it from resurfacing.

(2) Coyote and wolf may be taken with a foot holding restraining trap providing the device has a minimum space of 5 millimetres between the jaws when closed, or the device has pads of a rubber-like substance fastened to the trap jaws or the device is equipped with trap jaws of 9 millimetres or greater in thickness.

(3) A person shall not use a foot hold restraining trap for lynx unless it is a foot hold restraining trap as described in Schedule C for lynx and the trap is used in accordance with the conditions prescribed in Schedule C.

Killing traps

6. (1) Furbearing animals shall be taken only by means of a killing trap set in a manner as to kill the animal quickly.

(2) Subsection (1) shall not apply to the taking of fox, coyote, wolf or lynx.

(3) A person shall not trap, take or kill any furbearing animal by means of a trap or other device equipped with metal teeth, metal serrated edges, hooks or sharp devices.

(4) A person shall not use spring poles or foot hold traps in trees or poles, unless the trap is set as a killing trap.

Live holding devices

7. Live holding devices set on land for the taking of furbearing animals shall be checked daily.

Rate of beaver harvest

8. (1) On the Island of Newfoundland, the holder of a beaver trapline licence shall harvest beaver at a rate of one beaver per active lodge on the trapline area identified in the licence.

(2) In Labrador, there is no limit on the number of beaver which may be taken by the holder of a trappers beaver licence.

Lynx

9. (1) Lynx taken during the open season for lynx shall be registered for tagging before the close of business hours on Friday, January 9, 2009.

(2) Lynx carcasses shall be surrendered to the Wild Life Division at the time of registration for tagging prescribed under subsection (1).

(3) A person shall not have in his or her possession any lynx pelt or any lynx parts, unless that person holds a valid trappers licence and the pelt or pelt parts are registered as required in subsections (1) and (2).

(4) A licensed trapper who takes lynx accidentally during the trapping seasons for other species, other than those trapping periods prescribed for lynx, shall within 7 days of the taking the lynx, surrender it to the Wild Life Division.

(5) This section shall not apply to the taking of lynx in Labrador.

Wolves

10. A person who takes a wolf shall surrender the lower jawbone or complete skull of each wolf taken to the Wild Life Division by May 10, 2009.

Prohibition

11. A person shall not transport or possess any firearm under the authority of a valid hunting license without being in possession of an outdoor identification card, or non-resident equivalent, issued to the person.

Sunday hunting

12. Hunting with a firearm on Sundays shall be permitted across the entire province, beginning November 2, 2008 and ending April 30, 2009, for the species and during the seasons described in this order.

Repeal

13. The *Furbearing Animals Trapping Order, 2007-2008, Newfoundland and Labrador Regulation 103/07, is repealed.*

Schedule A

(a) Pine Marten Study Area

That part of the Island of Newfoundland bounded by a line beginning at the intersection of the Trans Canada Highway, Route 1, and the Camp 33 Road;

Then following the Camp 33 Road to the southwestern extremity of Grand Lake;

Then following the shoreline of Grand Lake to the mouth of Red Indian Brook a distance of approximately 15 kilometres to a small lake on its headwaters;

Then following a straight line in a generally southeasterly direction to the southeastern extremity of the Lake of the Hills;

Then following the western bank of the brook flowing out of Lake of the Hills to Otter Pond;

Then following the western shore of Otter Pond and the western bank of the brook flowing out of Otter Pond into Lloyds River;

Then following the northern bank of Lloyds River and the northern shore of Lloyds Lake and the northern bank of Lloyds River, west of Lloyds Lake, to the mouth of the brook flowing out of Cormacks Lake;

Then following the eastern or northern bank of this brook to Cormacks Lake;

Then following a straight line in a generally northerly direction approximately 8 kilometres to a point on the headwaters of Little Barachois Brook;

Then following the northern bank of Little Barachois Brook to its intersection with the eastern boundary of the Barachois Pond Provincial Park;

Then following the eastern and northern boundaries of the park to the Trans Canada Highway;

Then following the Trans Canada Highway to the point of commencement.

Excluding the Little Grand Lake Provisional Ecological Reserve established by the *Little Grand Lake Provisional Ecological Reserve Regulations*, Newfoundland and Labrador Regulation 84/02, as described in the *Little Grand Provisional Ecological Reserve Order*, Newfoundland and Labrador Regulation 83/02, made under the authority of the *Wilderness and Ecological Reserves Act*.

(b) Main River/Upper Humber Area

All that area of the Island of Newfoundland, commencing at a tributary on Main River UTM 481,975 metres east 5,522,600 metres north;

Then following this tributary in a generally northerly direction to UTM 483,840 metres east 5,528,225 metres north;

Then following a straight line in a southeasterly direction to UTM 488,460 metres east 5,525,000 metres north;

Then following a straight line in an easterly direction to the eastern extremity of a small pond at UTM 498,485 metres east 5,525,000 metres north;

Then following the eastern shoreline of the pond to its outlet;

Then following a chain of brooks in a southerly direction to UTM 498,771 metres east 5,522,615 metres north;

Then following a straight line in a generally southeasterly direction to UTM 502,332 metres east 5,518,590 metres north;

Then following a straight line in a generally southwesterly direction to UTM 499,538 metres east 5,516,260 metres north;

Then following a straight line in a southerly direction to the outlet of a small pond at UTM 499,615 metres east 5,513,620 metres north;

Then following a stream that flows in a southerly direction to Main River;

Then following Main River in a westerly direction to a small tributary at UTM 495,570 metres east 5,510,540 metres north;

Then following that tributary and a chain of ponds in a generally westerly direction to where a small stream is intersected by the Upper Humber Forest Access Road at UTM 480,650 metres east 5,509,735 metres north;

Then following a straight line in a westerly direction to the east shore of a small pond at UTM 469,023 metres east 5,510,070 metres north;

Then following the north side of that pond and a connected tributary in a northwesterly direction to its intersection with the eastern boundary of Gros Morne National Park at UTM 466,335 metres east 5,510,602 metres north;

Then following the boundary of the park in a northerly direction to where it intersects a lake at UTM 461,750 metres east 5,529,000 metres north;

Then following the south shoreline of that lake in an easterly direction to its most eastern extremity;

Then following a straight line in an easterly direction to UTM 466,087 metres east 5,528,540 metres north;

Then following the southern shore of Parsons Pond River in an easterly direction to the point of commencement.

(c) Northwest Grand Lake Area

All that area of the Island of Newfoundland bounded by a line beginning at the intersection of the Trans Canada Highway, Route 1, and Camp 33 Road;

Then following Camp 33 Road to the southwest extremity of Grand Lake;

Then following the north shoreline of Grad Lake in a north-easterly direction to the Humber Canal;

Then following the south bank of the Humber Canal to its intersection with the TCH at Deer Lake;

Then following the TCH in a southwesterly direction to the point of commencement.

(d) Terra Nova Area

All that area of the Island of Newfoundland bounded by a line beginning at the intersection of North West River and the Terra Nova National Park, TNNP, boundary at UTM coordinates 706,250 metres east and 5,365,250 metres north;

Then following the north bank of the said river in a westerly direction to UTM coordinates 664,125 metres east and 5,346,625 metres north;

Then following a straight line in a northwesterly direction to UTM coordinates 663,750 metres east and 5,353,125 metres north;

Then following a straight line in a westerly direction to the northeastern extremity of Kepenkeck Lake;

Then following a straight line in a northwesterly direction to the eastern extremity of Newton's Lake;

Then following a straight line in a northerly direction to the eastern extremity of South West Pond;

Then following a straight line in a northeasterly direction to the western extremity of Dead Wolf Pond;

Then following the southern shoreline of Dead Wolf Pond to the mouth of a small stream entering the pond at its eastern extremity;

Then following this stream to its headwaters pond;

Then following a straight line for approximately 500 metres due east to an unnamed pond;

Then following a stream exiting this pond at its southeastern extremity;

Then following this stream in a southeasterly direction to its outflow in Riverhead Brook;

Then following this brook in an easterly direction to its mouth in Gambo Pond;

Then following the north shore of Gambo Pond to Gambo Brook;

Then following the west bank of Gambo Brook to its intersection with the Trans Canada Highway, TCH, Route 1;

Then following the TCH in an easterly direction to its intersection with the TNNP boundary;

Then following the western boundary of TNNP in a southerly direction to the point of commencement.

(e) Charlottetown Enclave Area

All that area of the Island of Newfoundland bounded by a line beginning at the intersection of the Terra Nova National Park, TNNP, boundary and the north shoreline of Clode Sound, Bonavista Bay at UTM coordinates 720,554 metres east and 5,367,279 metres north;

Then following the TNNP boundary in a northerly direction to UTM coordinates 720,507 metres east and 5,370,209 metres north;

Then following the TNNP boundary in a northeasterly direction to UTM coordinates 721,554 metres east and 5,371,792 metres north;

Then following the TNNP boundary in a southeasterly direction to its intersection with the north shoreline of Clode

Sound, Bonavista Bay at UTM coordinates 722,550 metres east and 5,369,850 metres north;

Then following the shoreline of Clode Sound, Bonavista Bay in a southwesterly direction to the point of commencement.

(f) Red Indian Lake Area

All that area of the Island of Newfoundland bounded by a line beginning at the mouth of Victoria River and Red Indian Lake;

Then following the north bank of Victoria River in a southwesterly direction to Victoria Lake;

Then following a mid-way line between the north and south shorelines of Victoria Lake to the mouth of a small river entering Victoria Lake at its southwestern extremity;

Then following the north bank of the Victoria River to a point opposite the mouth of a brook flowing from Peter Strides Pond;

Then following a straight line in a northerly direction to the intersection of the Pine Marten Study Area and Lloyds River at the mouth of the brook flowing from Cormack Lake;

Then following the Pine Marten Study Area boundary along Lloyds River in a northeasterly direction to the mouth of Otter Pond Brook;

Then following the western bank of Otter Pond Brook, the western shore of Otter Pond and the west bank of Otter Pond Brook to Lake of the Hills;

Then following a straight line in a northwesterly direction to UTM co-ordinates 471,250 metres east and 5,379,000 metres north;

Then following a straight line in a northeasterly direction to its intersection with Clench Brook at UTM co-ordinates 500,875 metres east and 5,401,000 metres north;

Then following the south bank of Clench Brook to its mouth on Red Indian Lake;

Then following a straight line in an easterly direction to the point of commencement.

(g) Lynx Zone A: Northern Region

All that area of the Island of Newfoundland bounded by a line beginning at the intersection of the Burgeo Highway with the southern bank of the Lloyd's River and;

Then following the Burgeo Highway in a southerly direction to the northern extent of the intersection causeway to Grandy Island and the coastline of insular Newfoundland;

Then following the coastline in a generally westerly direction to Cape Ray;

Then northerly along the western shoreline of the Great Northern Peninsula to Cape Onion;

Then southerly following the eastern shoreline of the Great Northern Peninsula to the confluence of Hampton River with White Bay;

Then following the north-east coast of insular Newfoundland and Labrador in a generally easterly direction to the mouth of the Terra Nova River at its outflow located at Glovertown South;

Then following the southern bank of the Terra Nova River to its confluence with Terra Nova Lake;

Then following the southern shoreline of Terra Nova Lake in a generally south-westerly direction to its southern extremity;

Then following the southern shoreline of the Terra Nova River in a generally south-westerly direction to Mollygua-jeck Lake;

Then following the southern shoreline of Mollyguajeck Lake to its southern extremity where a small stream enters the lake;

Then following a straight line in a westerly direction to the point of commencement.

(h) Lynx Zone B: Southern Region

All that area of the Island of Newfoundland bounded by a line beginning at a point known as Main Gut at the mouth of the St. George's River in St. Georges Bay;

Then following the southern shoreline of St. George's River in a easterly direction to the Trans Canada Highway;

Then following the Trans Canada Highway in a southerly direction to the Burgeo Highway;

Then following the Burgeo Highway in a easterly direction to the its intersection with the south bank of the Llyods River;

Then following a straight line in an easterly direction to the southern extremity of Mollyguajeck Lake where a small stream enters the lake;

Then following the southern shoreline of Mollyguajeck Lake to Terra Nova River;

Then following the southern bank of the Terra Nova River to Terra Nova Lake;

Then following the southern shoreline of Terra Nova Lake to Terra Nova River;

Then following the southern bank of the Terra Nova River to its mouth (outflow) at Glovertown South;

Then following the coastline of insular Newfoundland including all offshore islands and excluding all areas within National Park jurisdiction in a southerly direction to the point of commencement.

(i) Little Grand Lake Wild Life Reserve

The Little Grand Lake Wild Life Reserve established by the *Little Grand Lake Wild Life Reserve Regulations*, Newfoundland and Labrador Regulation 85/02.

(j) Glover Island

The Glover Island Public Reserve established by the *Glover Island Public Reserve Regulations*, Newfoundland and Labrador Regulation 87/02, as described in the *Glover Island Public Reserve Order*, Newfoundland and Labrador Regulation 86/02, made under the authority of the *Lands Act*.

Schedule B

(a) Labrador North Fur Zone

All that area of Labrador, including offshore islands, lying north of a line commencing at a point on the coast at 54° north latitude;

Then west along 54° north latitude to its intersection with 62° west longitude;

Then north along 62° west longitude to 55° north latitude;

Then west along 55° north latitude to its intersection with the Labrador - Quebec border;

Then following the Labrador-Quebec Boundary in a northerly and easterly direction to a point where this boundary intersects 58° 26' 37.8" north latitude;

Then following a straight line in a south-easterly direction for 11941 meters to a point located at 58° 22' 14.2" north latitude and 63° 42' 2.3" west longitude;

Then following a straight line in a north-easterly direction for 15097 meters to a point located at 58° 25' 31.5" north latitude and 63° 27' 51.9" west longitude;

Then following a straight line for 8960 meters in a north-easterly direction to a point where this boundary intersects 58° 28' 12.5" north latitude and coast line of mainland Labrador.

(b) Labrador East Fur Zone

All that area of Labrador, including offshore islands, lying south of a line commencing at a point on the coast at 54° north latitude, then west along 54° north latitude to its intersection with 62° west longitude, then south along 62° west longitude to its intersection with the Goose River, then in a generally south-westerly direction to a pond at the headwaters of the Cache River, then following the Cache River to

its intersection with 62° west longitude, then following 62° west longitude south to its intersection with the Quebec Labrador border.

(c) Labrador West Fur Zone

All the remainder of Labrador not described in the Labrador North and Labrador East Fur Zones.

Schedule C

List of Killing traps certified for use by species under certain stated conditions:

When trapping beaver either underwater and on land:

Belisle Classic 330

LDL C 280

Belisle Super X 280

LDL C 330

Belisle Super X 330

Rudy 280

B.M.I. 330 Body Gripper

Rudy 330

Bridger 330

Sauvageau 2001-12

Species specific 330 Dislocator Half Magnum

Species specific 440 Dislocator Half Magnum

Woodstream Oneida Victor Conibear 280

Woodstream Oneida Victor Conibear 330

Sauvageau 1000 -11F

Duke 330

LDL C330 Magnum

When trapping beaver underwater only:

B.M.I 280 Body Gripper

Sauvageau 2001-8

LDL C280 Magnum

When trapping marten:

Belisle Super X 120

Rudy 120 Magnum

Belisle Super X 160

Rudy 160 Plus

B.M.I. 126 Magnum Body Gripper

Sauvageau C120 Magnum

LDL B120 Magnum

Sauvageau 2001-5

Sauvageau 2001-6

When trapping muskrat on land:

Belisle Super X 120

Bridger 120

Sauvageau 2001-5

B.M.I. 120

LDL B120 Magnum

Triple M

B.M.I. 120 Magnum

Rudy 120 Magnum

Duke 120

B.M.I.126 Magnum

Sauvageau C120 Magnum

Koro Muskrat

Woodstream Oneida Victor Conibear 110

Sauvageau C120 "Reverse Bend"

Woodstream Oneida Victor Conibear 120

When trapping muskrat underwater:

Any jaw type trap (body gripping or leghold) set as a submersion set that exerts clamping force on a muskrat and maintains a muskrat underwater.

List of foot hold restraining traps certified for use for lynx under specific stated conditions.

When trapping lynx:

Belisle Footsnare #6

Oneida Victor #3 Soft Catch equipped with two coil springs.

Oneida Victor #3 Soft Catch equipped with 4 coil springs

Oneida Victor # 3 equipped with a minimum 8mm thick, non-offset steel jaw, 4 coil springs and an anchoring swivel centre mounted on a base plate.

Schedule D

Trapping and setting requirements by species approved for use in the Main River/Upper Humber Study Area, Pine Marten Study Area (Excluding the Little Grand Lake Provisional Ecological Reserve), the Little Grand Lake Wild Life Reserve and the Glover Island Public Reserve.

Target Species and Approved Trap	Setting Requirements
Beaver Conibear	Trap jaws shall be completely submerged requiring target species to dive.
Beaver Submarine Cage	Cage shall be completely submerged.
Beaver Snare Pole	Snares shall be completely submerged.
Ermine (weasel) or Squirrel Rat Trap	Victor rat trap, whether baited or not, shall be completely enclosed inside a wooden box with a 1.5" hole at one end.
Fox , Coyote or Lynx Restraining Neck Snare	- Wire shall be 3/32 " or greater - 360° swivel required at the attachment point -The stop on the snare loop shall be fastened so that the loop will close to a minimum 8" circumference. -The snare shall be fastened to an immovable object with no drags. -The snare may be set with or without the use of bait.
Mink Conibear	The floating mink box-trap shall be set in the entrance of a floating wooden box, whether or not the trap is baited, and the entrance to the box shall be completely submerged.
Otter, Mink or Muskrat Submarine Cage	The cage shall be completely submerged.

Otter, Mink or Muskrat Coni-bear	Trap jaws shall be completely submerged requiring target species to dive.
Beaver, Otter, Muskrat or Mink Slide-lock Drowner	<ul style="list-style-type: none">-The trap shall be a foot hold type with a slide lock attached.- The trap shall be placed at least 5' from the shoreline or on a semi-submerged log with no land-based access.-The snare may be set with or without the use of bait.-The water shall be sufficiently deep so as to ensure drowning.
Squirrel Pole	Snares shall use 16 pound test snare wire attached to a horizontal or leaning pole, snares 3/4"-1" up off the pole and having 1.5"-1.75" diameter loop. No bait shall be used.

Schedule E

Traps and setting requirements by species approved for use in the North West Grand Lake Area, the Charlottetown Enclave Area, the Terra Nova Area and the Red Indian Lake Area.

All those trap and setting requirements as described in Schedule D, and in addition, those outlined below:

Target Species and Approved Trap	Setting Requirements
Fox Coyote or Lynx Killing Neck Snare	The snare shall be equipped with a lock

©Earl G. Tucker, Queen's Printer

Index

PART I

Change of Name Act – Applications	497
Canada-Newfoundland and Labrador Atlantic Accord Implementation Newfoundland and Labrador Act– Notices.....	496
Corporations Act– Notices.....	487
Lands Act – Notice	500
Mineral Act– Notice	492
Urban and Rural Planning Act– Notice	497
Quieting of Titles Act– Notices	500

PART II

CONTINUING INDEX OF SUBORDINATE LEGISLATION

Title of Act and Subordinate Legislation made thereunder	CNLR or NL Reg.	Amendment	NL Gazette Date & Page No.
Judicature Act			
Rules of the Supreme Court, 1986 (Amdt) (In force January 19, 2009)	NLR 75/08	Rules 56A.72-56A.87 Added Forms 56A.76A 56A.76B and 56A.78A Added	Dec 19/08 p. 591
Wild Life Act and Wild Life Regulations			
Furbearing Animals Trapping and Shooting Order	NLR 76/08	R & S NLR 103/08	Dec 19/08 p. 603

The Newfoundland and Labrador Gazette is published from the office of Earl G. Tucker, Queen's Printer.

Copy for publication must be received before **Friday, 4:30 p.m.**, seven days before publication, to ensure inclusion in next issue.

Advertisements should be typewritten or printed legibly, separate from covering letter. Number of insertions required must be stated and the names of all signing officers typewritten or printed.

Copy may be mailed to the address below, faxed to (709) 729-1900 or emailed to queensprinter@gov.nl.ca.

Advertising rates are available upon request. Subscription rate for *The Newfoundland and Labrador Gazette* is \$125.00 for 52 weeks plus applicable tax (\$131.25). Weekly issues of \$3.00 per copy, plus tax payable in advance.

All cheques, money orders, etc., should be made payable to THE NEWFOUNDLAND EXCHEQUER ACCOUNT and all correspondence should be addressed to: Office of the Queen's Printer, P. O. Box 8700, Ground Floor, East Block, Confederation Building, St. John's, NL A1B 4J6. Telephone (709) 729-3649. Fax: (709) 729-1900.

Web Site: <http://www.gs.gov.nl.ca/gsoqp>

**Place your order by contacting:
Office of The Queen's Printer
Confederation Building, East Block
St. John's, NL A1B 4J6
Telephone: (709) 729-3649 Fax: (709) 729-1900
email: queensprinter@gov.nl.ca**

**Government Information Product
Publication Rate Mail
G.S.T. # R107442683**

All requests for Subscription and Legislation MUST be prepaid.