



THE NEWFOUNDLAND AND LABRADOR GAZETTE

PART I

PUBLISHED BY AUTHORITY

Vol. 84

ST. JOHN'S, FRIDAY, MARCH 6, 2009

No. 10

CORPORATIONS ACT

Corporations Act - Section 393
Local Incorporations
For the Month of: January 2009

Date	Number	Company Name			
2009-01-01	59459	BYRON'S ELECTRONICS INC.	2009-01-09	59495	MILLS PITTMAN HOLDINGS PLC INC.
2009-01-02	59431	59431 NEWFOUNDLAND & LABRADOR INC	2009-01-09	59494	THE BENNETT GROUP OF COMPANIES INC.
2009-01-02	59432	Mark Baldwin and Associates Inc.	2009-01-09	59484	Youngs Cabinetry & Woodwork Ltd.
2009-01-05	59437	H I S ENTERPRISES LTD.	2009-01-09	59485	Clear HR Consulting Inc.
2009-01-05	59435	J.D. CONTRACTING INC.	2009-01-09	59491	59491 NEWFOUNDLAND & LABRADOR INC.
2009-01-05	59467	S & M CONSTRUCTION LTD	2009-01-09	59493	Steady Brook Inn Ltd.
2009-01-05	59436	SAMARK SERVICES INC.	2009-01-12	59503	CHESTER HOLDINGS LIMITED
2009-01-06	59470	59470 NEWFOUNDLAND AND LABRADOR CORP	2009-01-12	59501	DC TILLEY GROUP INC.
2009-01-06	59469	JOHN JANES PROFESSIONAL MEDICAL CORPORATION	2009-01-12	59502	DR. NASIR MAHMOOD PROFESSIONAL MEDICAL CORPORATION
2009-01-06	59472	PATEYS CONTRACTING LTD.	2009-01-12	59504	HYSLOP CONSULTING SERVICES INC
2009-01-06	59468	ST. ANTHONY AND AREA LIONS CLUB INC.	2009-01-12	59505	J.D.O. CONTRACTING LTD
2009-01-06	59439	Atlantic Attachment Services Inc.	2009-01-12	59500	T & K RECREATION LIMITED
2009-01-07	59480	REPUBLIC PROPERTIES INC.	2009-01-12	59498	Clay Oates Landscaping & Construction Ltd
2009-01-07	59471	Wall To Wall Construction Ltd.	2009-01-12	59499	Cavanagh Financial Services (2009) Inc.
2009-01-08	59486	ALL-STAR IMPRINTS INC.	2009-01-13	59510	MCFARLANE CONTRACTING LTD.
2009-01-08	59487	ARVA CAPITAL DEVELOPMENT CORP.	2009-01-13	59509	TROUT RIVER LIONS CLUB INC.
2009-01-08	59488	CALLICO ENTERPRISES LTD.	2009-01-13	59506	Upwards Management Inc.
2009-01-08	59490	MACO BUILDERS LTD	2009-01-15	59516	59516 NEWFOUNDLAND AND LABRADOR LTD.
2009-01-08	59489	PM ATLANTIC LTD.	2009-01-15	59517	59517 NEWFOUNDLAND & LABRADOR INC.
2009-01-08	59492	RDG HOLDINGS LIMITED	2009-01-15	59519	59519 NEWFOUNDLAND AND LABRADOR LIMITED
2009-01-08	59483	Morgan Holdings Inc.	2009-01-15	59515	ELLSWORTH INDUSTRIAL GROUP INC.
			2009-01-15	59518	SWEET HOME RENOVATIONS LTD.

THE NEWFOUNDLAND AND LABRADOR GAZETTE
March 6, 2009

2009-01-16	59522	CONNECTIONS FOR SUCCESS INC.			<i>Corporations Act - Section 331</i>
2009-01-16	59523	EASTERN AUTO GLASS LTD.			Local Revivals
2009-01-16	59526	HIGHMARK HOLDINGS LIMITED			For the Month of: January 2009
2009-01-16	59527	KORY KOOKIES INC.			
2009-01-16	59528	MORAG LOVES FORGET IT INC.	Date	Number	Company Name
2009-01-16	59524	PAUL WILLIAMS INSPECTIONS LTD	2009-01-05	47445	Riversedge Enterprises Ltd.
2009-01-16	59525	STASSINU SERVICES INC.	2009-01-07	31204	Hiland Insurance Limited
2009-01-16	59521	Normar Consulting Ltd.	2009-01-16	46765	Dr. Josh Foley Professional Medical Corporation
2009-01-19	59534	COW HEAD AMBULANCE INC.			
2009-01-19	59530	GWH HOLDINGS LTD.	2009-01-16	39885	ROTARY TOPSAIL BEACH DEVELOPMENT ASSOCIATION INC.
2009-01-19	59531	TRIPLE C HOLDINGS INC.			
2009-01-19	59529	ButterPot Consulting Services Ltd.	2009-01-19	39928	JFCRC Holdings Inc.
2009-01-20	59536	59536 NEWFOUNDLAND AND LABRADOR INC.	2009-01-19	44123	Norseman Contractors Inc.
			2009-01-21	44088	ARDENT CONSULTING INCORPORATED
2009-01-20	59537	GOOSE COVE ENTERPRISES LTD.			
2009-01-20	59535	STASSIS SELF-STORAGE INC.	2009-01-21	34217	Hams of Western Labrador, Inc.
2009-01-20	59539	VARIETY SOLUTION INC	2009-01-22	1787	CANADIAN UNIVERSAL INSURANCE COMPANY, LIMITED
2009-01-21	59548	59548 NEWFOUNDLAND & LABRADOR INC.			
			2009-01-22	29492	CENTRE LOOP ARTS AND RECREATION ASSOCIATION INC.
2009-01-21	59546	DRACO KNIGHTS MOTORCYCLE CLUB INC.			
			2009-01-26	38663	First Light Productions Inc.
2009-01-21	59547	IRONCORE SECURITY INC	2009-01-27	40457	SMP ENTERPRISES LTD
2009-01-21	59543	Golden Vista Foods Inc.	2009-01-27	44664	Topsail Road Petro Inc.
2009-01-21	59544	59544 NEWFOUNDLAND & LABRADOR INC.	2009-01-28	26219	ADDICTIONS TREATMENT SERVICES ASSOCIATION INC.
2009-01-22	59558	59558 NEWFOUNDLAND AND LABRADOR INC.	2009-01-28	27532	GHID CORP.
			Total Revivals: 15		
2009-01-22	59557	JT HOLDINGS INC.			
2009-01-22	59556	OCCAM'S RAZOR LIMITED			
2009-01-22	59549	SD Property Limited			
2009-01-22	59550	G & C Enterprises Ltd			<i>Corporations Act - Section 296 and 393</i>
2009-01-23	59551	Blue Stage Entertainment Ltd.			Local Continuances
2009-01-23	59552	Vision Electrical Limited			For the Month of: January 2009
2009-01-26	59562	COVE CONSTRUCTION LIMITED			
2009-01-26	59559	MFM Industries Limited	Date	Number	Company Name
2009-01-27	59571	59571 NEWFOUNDLAND AND LABRADOR INC.	2009-01-14	59511	59511 NEWFOUNDLAND & LABRADOR LTD.
2009-01-27	59573	EDMOND'S SERVICE CENTRE LTD.	2009-01-14	59512	LETTO SERVICES LTD.
2009-01-27	59572	TAX MART LTD.	2009-01-26	59563	MOONLITE MECHANICAL SERVICES LTD.
2009-01-28	59587	C-FER CARPENTRY LTD.			
2009-01-28	59582	GWM MANAGEMENT INC.			
2009-01-28	59584	TWIN GIRLS FISHING INC.			
2009-01-29	59593	59593 NEWFOUNDLAND AND LABRADOR INC.			
			Total Continuances: 3		
2009-01-29	59596	59596 NEWFOUNDLAND & LABRADOR INC.			<i>Corporations Act - Section 286</i>
					Local Amendments
					For the Month of: January 2009
2009-01-29	59597	59597 NEWFOUNDLAND & LABRADOR INC.	Date	Number	Company Name
2009-01-29	59598	59598 NEWFOUNDLAND & LABRADOR INC.	2009-01-01	58679	58679 NEWFOUNDLAND & LABRADOR INC.
2009-01-29	59594	JW CONTRACTING INC	2009-01-01	57663	BEARTOOTH HOLDINGS LIMITED
2009-01-29	59595	RADICAL DEVELOPMENTS INC.	2009-01-01	6617	BREAKWATER BOOKS LIMITED
2009-01-29	59586	Gone Ridin Inc	2009-01-01	59449	BURSEY SERVICES LIMITED
2009-01-29	59588	Labrador Forestry Consultants Ltd.	2009-01-01	57623	CAMPBELL'S MEAT MARKET (2009) LIMITED
2009-01-29	59589	Atlantic Fiber Resources Ltd.			
2009-01-30	59605	CAMEO DEVELOPMENT LTD.	2009-01-01	45653	East Coast Marine and Industrial Limited
2009-01-30	59603	J B K VENTURES LTD.	2009-01-02	38283	EASTERN GATE CHURCH INC.
2009-01-30	59604	MAVERICK ENTERPRISES LTD.	2009-01-06	56102	D & D MINI EXCAVATING LTD.
2009-01-30	59606	QUILTY ENTERPRISES LTD.	2009-01-06	59409	E SONAR INC.
2009-01-30	59602	SHARING OUR CULTURES INCORPORATED	2009-01-06	55669	FIRST CORPORATE FINANCE INC.
			2009-01-07	47179	ENCORE DEVELOPMENTS INC.
2009-01-30	59600	Eastern Star Group Canada Inc.			
2009-01-30	59601	Melmatt Holdings Inc.			

Total Incorporations: 95

THE NEWFOUNDLAND AND LABRADOR GAZETTE
March 6, 2009

2009-01-07	35544	White Rock Construction Ltd.	2009-01-29	22797	NORTHEAST OUTDOORS LTD.
2009-01-09	55331	55331 NEWFOUNDLAND & LABRADOR INC.	2009-01-29	54649	ULTRASPEC QUALITY CONTROL LTD.
2009-01-09	59426	59426 NEWFOUNDLAND AND LABRADOR LTD.	2009-01-30	12904	CABOT DEVELOPMENT CORPORATION LIMITED
2009-01-09	46968	Dr. Paul Heneghan Professional Medical Corporation	2009-01-30	52152	Lynnwell Auto Ltd.
2009-01-09	25926	R.M.S. ENTERPRISES LIMITED	2009-01-30	40382	MELENDY CONSTRUCTION LTD.
2009-01-12	40568	R. S. Holdings Limited	2009-01-30	57695	Metrics EFG Inc.
2009-01-12	44821	Virgo Contracting Ltd.	2009-01-30	32058	MiBar Holdings Ltd.
2009-01-13	57021	57021 NEWFOUNDLAND & LABRADOR INC.	2009-01-30	57648	Premium Business Solutions Inc.
2009-01-13	48954	Eastern Trailriders Inc.	2009-01-30	43964	SeyMax Auto Ltd.
2009-01-13	54946	GOLDEN DORY EXPLORATION LIMITED	Total Amendments: 67		
2009-01-13	49293	O'Keefe Roofing Inc	<i>Corporations Act - Section 337</i>		
2009-01-13	49244	ST. JOHN'S EXECUTIVE SUITES LIMITED	Local Intents to Dissolve		
2009-01-14	57406	BAYNET, BONAVIDA AREA YOUTH NETWORK INC.	For the Month of: January 2009		
2009-01-14	8782	Campbell Development Limited	Date	Number	Company Name
2009-01-14	38883	Canadian Industrial Supply Inc.	2009-01-12	56588	MTS HOLDINGS INC.
2009-01-14	31916	MARKETING SERVICES LIMITED	Total Intents to Dissolve: 1		
2009-01-15	38392	BFD Rentals Limited	<i>Corporations Act - Section 335</i>		
2009-01-15	26940	Brook Enterprises Inc.	Local Dissolutions		
2009-01-16	47123	11229 NEWFOUNDLAND INC.	For the Month of: January 2009		
2009-01-16	59153	Janes Holdings Inc.	Date	Number	Company Name
2009-01-19	41949	BARNES MARKETING ASSOCIATES INC.	2009-01-01	5450	LEWISPORTE CLINIC LIMITED
2009-01-19	7800	SOUTH WEST COAST MARINE SERVICES LIMITED	2009-01-05	50586	DRD SALES INC.
2009-01-20	35385	DIVERSITECH SERVICES INC.	2009-01-06	53465	MOULAND'S CONVENIENCE LTD.
2009-01-20	42506	Fleetwood Motors Limited	2009-01-07	45145	A + Air Cooled Engine Repair Limited
2009-01-20	23867	IMPRESS LARGE FORMAT INC.	2009-01-09	46760	Lumberjack Lounge Limited
2009-01-20	45025	The Jewellery Workshop Inc.	2009-01-09	41457	PAUSTUK CONSTRUCTION LTD.
2009-01-20	36633	Walsh's Truck & Trailer Repairs Ltd.	2009-01-12	53754	EASTERN ROOF AND FLOOR TRUSS MANUFACTURING INC.
2009-01-21	44088	ARDENT CONSULTING INCORPORATED	2009-01-12	48095	VTA Transport Inc.
2009-01-22	52809	52809 NEWFOUNDLAND & LABRADOR LTD.	2009-01-13	51662	COCOON MOBILE SPA INC.
2009-01-22	59412	DR. TREVOR HUMES PROFESSIONAL MEDICAL CORPORATION	2009-01-14	48474	Leyda Holdings Inc.
2009-01-22	52705	NORTHOVER ELECTRIC LTD.	2009-01-14	53730	SMART TAXIS ENCOURAGING RESPECT (STEER) INC.
2009-01-26	40261	Conception Bay North Legendary Car Club Inc.	2009-01-15	51557	COAST OF BAYS ARTS AND EXPLORATION CENTRE INC.
2009-01-26	42949	Corporate Ventures Inc.	2009-01-16	26968	Fishermans Hardware Limited
2009-01-27	54041	54041 NEWFOUNDLAND AND LABRADOR INC.	2009-01-16	55915	OLIVE'S GUEST HOME INC.
2009-01-27	53294	DBA CONSULTING ENGINEERS LTD.	2009-01-16	43654	Smart Signs Inc.
2009-01-27	31281	GITTENS & ASSOCIATES PLC INC.	2009-01-16	47216	Solomon Financial Inc.
2009-01-27	20918	Stagg & Templeman Construction Limited	2009-01-19	56705	JOY'S HAIR BOUTIQUE INC.
2009-01-27	57087	Stagg Investments Limited	2009-01-19	57914	VHL ENTERPRISES INC.
2009-01-27	16228	TOURISM INDUSTRY ASSOCIATION OF NEWFOUNDLAND AND LABRADOR	2009-01-19	37950	W.W.M. ENTERPRISES LIMITED
2009-01-28	26219	ADDICTIONS TREATMENT SERVICES ASSOCIATION INC.	2009-01-20	55444	CIRCLE OF CARE INC.
2009-01-28	48016	B & D CONSTRUCTION LTD.	2009-01-20	53611	MBB MARKETING INC.
2009-01-28	15643	G & P Limited	2009-01-22	38110	Eric Feltham Ltd.
2009-01-28	33686	Long Island Resources Limited	2009-01-22	7886	H.E. CROCKER & SON LIMITED
2009-01-28	16952	St. Alban's Drugs Limited	2009-01-26	57696	ASJ HOME INSPECTION INC.
2009-01-28	59369	TAKE THE SHOT PRODUCTIONS INC.	2009-01-26	53319	JOHN HEAD CONSULTING LIMITED
2009-01-29	48516	BACCALIEU TRAIL COMMUNITY CHURCH INC.	2009-01-26	46957	Sharakoom Enterprises Limited
2009-01-29	47885	GRI Simulations Inc.	2009-01-27	41196	Goulds Optical Limited
			2009-01-27	50010	TECHWORKS SYSTEMS LTD.
			2009-01-27	47609	Three C Fishery Limited
			2009-01-28	11693	Center Auto Body Limited
			2009-01-28	56588	MTS HOLDINGS INC.
			2009-01-29	57345	2008 WORLD JUNIOR BALL HOCKEY CHAMPIONSHIPS HOST COMMITTEE-ST.JOHN'S INC
			2009-01-29	47996	Dr. Sarbjit Missan Inc.

THE NEWFOUNDLAND AND LABRADOR GAZETTE
March 6, 2009

2009-01-29 37718 Graduate Centre of Applied Technology Inc.
2009-01-29 2105 HEATING PRODUCTS LIMITED
2009-01-29 50769 KEN TINA ENTERPRISES INC.
2009-01-29 57807 ROBBINS FINE FOODS LIMITED

Total Dissolutions: 37

Corporations Act - Section 299
Local Discontinuances
For the Month of: January 2009

Date Number Company Name

2009-01-06 58934 PDVC ENTERPRISES INC.

Total Discontinuances: 1

Corporations Act - Section 294
Local Amalgamations
For the Month of: January 2009

Date Number Company Name

2009-01-01 59455 10259 NEWFOUNDLAND INC.

From: 31402 10259 NEWFOUNDLAND INC.

57033 57033 NEWFOUNDLAND & LABRADOR INC.

2009-01-01 59453 ATLANTIC LEASING LIMITED

From: 59444 ATLANTIC LEASING (1985) LIMITED

10912 ATLANTIC LEASING LIMITED

2009-01-01 59458 BREAKWATER BOOKS LIMITED

From: 46470 11153 Newfoundland Ltd.

6617 BREAKWATER BOOKS LIMITED

2009-01-01 59450 CAPITAL MANAGEMENT

From: 56479 FINANCIAL ADVISORS INC.

33242 CAPITAL MANAGEMENT

FINANCIAL ADVISORS INC.
PADDOCK & ASSOCIATES LTD.

2009-01-01 59451 COLBY 2000 LIMITED

From: 43645 COLBY 2000 LIMITED

19250 Colby Construction Limited

2009-01-01 59460 CORNER BROOK DECOR LTD.

From: 59358 59358 NEWFOUNDLAND &

LABRADOR LTD.

19865 CORNER BROOK DECOR LTD.

2009-01-01 59461 DENNIS CHEVROLET PONTIAC

From: 4891 BUICK GMC LIMITED

DENNIS CHEVROLET PONTIAC

BUICK GMC LTD.

46101 Jonah Holdings Inc.

2009-01-01 59466 EAST COAST MARINE AND

From: 58679 INDUSTRIAL LIMITED

58679 58679 NEWFOUNDLAND &

LABRADOR INC.

45653 East Coast Marine and Industrial Limited

2009-01-01 59452 GLEN & JERRY FISHERIES INC.

From: 43459 GLEN & JERRY FISHERIES INC.

30099 W. K. N. Enterprises Ltd.

2009-01-01 59457 HICKMAN MOTORS LIMITED

From: 6717 CROSSROADS PONTIAC BUICK

LIMITED

16256 E.V. Clarke Holdings Limited
58439 HICKMAN MOTORS LIMITED

2009-01-01 59456 NEWFOUNDLAND HVAC LIMITED
From: 50232 ANCHORAGE CONTRACTING
SERVICES LTD.

26434 Newfoundland HVAC Limited

2009-01-01 59463 ST. ALBAN'S BUILDING SUPPLIES
LIMITED

From: 55020 SNOOK'S HOLDINGS LIMITED

11396 St. Alban's Building Supplies Limited

2009-01-01 59464 STEERS INSURANCE LIMITED

From: 52690 BAHIA VISTA HOLDINGS LTD.

42478 Steers Insurance Limited

2009-01-01 59462 VONIN CANADA LIMITED

From: 24671 Hopedale Fishing Gear Limited

47934 VONIN CANADA LIMITED

2009-01-01 59454 W & R ENTERPRISES LIMITED

From: 40397 CULL'S ECLIPSE LIMITED

26371 W & R ENTERPRISES LIMITED

2009-01-05 59473 HSF OCEAN PRODUCTS LTD.

From: 55102 CAPE MARINER ENT LTD

48032 HSF Ocean Products Ltd.

2009-01-22 59570 OVERHEAD DOOR (NFLD) LIMITED

From: 59503 CHESTER HOLDINGS LIMITED

18421 Overhead Door (NFLD) Limited

2009-01-31 59607 GOOSE BAY OUTFITTERS LIMITED

From: 5032 Goose Bay Outfitters Limited

7483 Terpstra Engineering Limited

Total Amalgamations: 18

Corporations Act - Section 286
Local Name Changes
For the Month of: January 2009

Number Company Name
58679 58679 NEWFOUNDLAND &
LABRADOR INC.

2009-01-01 From: 58679 NEWFOUNDLAND &
LABRADOR INC.

57663 BEARTOOTH HOLDINGS LIMITED

2009-01-01 From: CAMPBELL'S MEAT MARKET
LIMITED

59449 BURSEY SERVICES LIMITED

2009-01-01 From: PROFESSIONAL CLEANING
COMPANY LIMITED

57623 CAMPBELL'S MEAT MARKET (2009)

2009-01-01 From: 57623 NEWFOUNDLAND AND
LABRADOR LIMITED

59409 E SONAR INC.

2009-01-06 From: 59409 NEWFOUNDLAND &
LABRADOR LTD

THE NEWFOUNDLAND AND LABRADOR GAZETTE
March 6, 2009

55669		FIRST CORPORATE FINANCE INC.	2009-01-20	59540	CYNERGY EXECUTIVE HOLDINGS INCORPORATED	
2009-01-06	From:	FIRST CAPITAL LEASING INC.		2009-01-20	59538	CYNERGY EXECUTIVE REALTY INCORPORATED
47179		ENCORE DEVELOPMENTS INC.	2009-01-20	59541	NBC ALTERNATIVE INVESTMENTS GP INC./	
2009-01-07	From:	SHAMROCK WATERS OF CANADA INC.				BNC GESTION ALTERNATIVE GP INC.
54946		GOLDEN DORY EXPLORATION LIMITED	2009-01-22	59553	LAURIER CAPITAL PLANNING INC.	
2009-01-13	From:	GOLDEN DORY RESOURCES LIMITED		2009-01-22	59554	W. H. SCRIVENS & SON LIMITED
59369		TAKE THE SHOT PRODUCTIONS INC.	2009-01-23	59555	AÉRO MAG 2000 (YYT) INC.	
2009-01-28	From:	SMOKE BOMB ENTERTAINMENT INC.		2009-01-26	59574	ARK RESOURCE CORP.
52152		Lynnwell Auto Ltd.	2009-01-26	59575	EQUIREX VEHICLE LEASING 2007 INC.	
2009-01-30	From:	Lynnwell Auto Ltd.		2009-01-26	59566	LOGISTEX INDUSTRIES CANADA LIMITED
57695		Metrics EFG Inc.	2009-01-26	59576	ROBECO INVESTMENT MANAGEMENT INC.	
2009-01-30	From:	Metrics EFG Inc.		2009-01-26	59578	SE COMMUNICATIONS GP INC.
57648		Premium Business Solutions Inc.	2009-01-27	59580	SUNCHILD RENTALS LTD.	
2009-01-30	From:	Premium Business Solutions Inc.		2009-01-27	59579	1263343 ALBERTA INC.
				2009-01-27	59581	HOLMAN CANADA GP COMPANY RENT-A-CENTRE CANADA, LTD. CENTRE DE LOCATION DU CANADA, LTEE
Total Name Changes: 12			2009-01-28	59585	QUADRUS DISTRIBUTION SERVICES LTD./SERVICES DE DISTRIBUTION QUADRUS LTÉE	
Corporations Act - Section 443			2009-01-29	59599	CASTLEMOORE INC.	
Extra-Provincial Registrations			2009-01-29	59592	MEAD JOHNSON NUTRITION (CANADA) CO.	
For the Month of: January 2009						

Date	Number	Company Name
2009-01-02	59433	POTTRUFF & SMITH INSURANCE BROKERS INC.
2009-01-02	59434	WESTERN UNION FINANCIAL SERVICES (CANADA), INC. / SERVICES FINANCIERS WEATERN UNION (CANADA), INC.
2009-01-05	59438	THYSSENKRUPP ELEVATOR (CANADA) LIMITED/ASCENSEURS THYSSENKRUPP (CANADA) LIMITEE
2009-01-06	59476	30 - MAY - 50 HOLDINGS LTD.
2009-01-06	59474	7026609 CANADA INC.
2009-01-06	59477	CANADA DOMINION RESOURCES 2009 CORPORATION
2009-01-06	59479	CMP 2009 CORPORATION
2009-01-06	59478	HERBALIFE OF CANADA LTD. HERBALIFE DU CANADA LTEE
2009-01-07	59496	H&R BLOCK INSURANCE AGENCY, INC.
2009-01-07	59482	NEWELL INDUSTRIES CANADA INC.
2009-01-12	59513	INDUSTRIES MACHINEX INC.
2009-01-13	59507	GOLDEN DORY RESOURCES CORP.
2009-01-15	59520	ACC FARMERS' FINANCIAL
2009-01-15	59514	MSP 2009 GP INC.
2009-01-16	59542	DATA MANAGEMENT INTERNATIONALÉ INC.
2009-01-19	59533	APPAREL SOLUTIONS INTERNATIONAL INC.
2009-01-19	59532	VERSACOLD SERVICES CORPORATION/ CORPORATION SERVICES VERSACOLD

Total Registrations: 36

Number	Company Name
51829	NATURAL HEALTH PRACTITIONERS OF CANADA ASSOCIATION (NHPCA)/ASSOCIATION DES PRATICIENS DE LA SANTE NATURELLE DU CANADA (APSN)
2009-01-06	From: NATURAL HEALTH PRACTITIONERS OF CANADA ASSOCIATION (NHPCA)/ASSOCIATION DES PRATICIENS DE LA SANTÉ NATURELLE DU CANADA (APSN)
58758	3229897 NOVA SCOTIA COMPANY
2009-01-08	From: DOW CHEMICAL CANADA ULC
51218	DOW CHEMICAL CANADA ULC
2009-01-08	From: DOW CHEMICAL CANADA INC.
2009-01-08	From: K-DOW CANADA ULC
51218	K-DOW CANADA ULC
2009-01-08	From: DOW CHEMICAL CANADA INC.
2009-01-08	From: K-DOW CANADA ULC
52804	SONY MUSIC ENTERTAINMENT CANADA INC.

THE NEWFOUNDLAND AND LABRADOR GAZETTE
March 6, 2009

Mineral rights to the following mineral licenses have reverted to the Crown:		Situate near On map sheet	Branch,Avalon Peninsula 01K/13 01L/16
Mineral License Held by Situate near On map sheet	007418M Celtic Minerals Ltd Red Indian Lake,Central NL 12A/15 12A/16	Mineral License Held by Situate near On map sheet	012782M Hicks, Darrin Makkovik River 13J/14
Mineral License Held by Situate near On map sheet	010769M Cornerstone Resources Inc. Port Blandford,Eastern NL 02D/08	Mineral License Held by Situate near On map sheet	012783M Murphy, Noel G. Branch,Avalon Peninsula 01K/13 01L/16
Mineral License Held by Situate near On map sheet	012670M Quinlan, Eddie Farewell Harbour,Central NL 02E/09 02E/10	Mineral License Held by Situate near On map sheet	012785M Murphy, Noel G. Branch,Avalon Peninsula 01K/13 01L/16
A portion of license Held by Situate near On map sheet more particularly described in an application on file at Department of Natural Resources	010981M Quinlan, Eddie Dildo Run,Central NL 02E/10	Mineral License Held by Situate near On map sheet	012814M Hicks, Darrin Micmac River 13J/11
Mineral License Held by Situate near On map sheet	010359M Mega Uranium Ltd. Nipishish Lake 13K/07	Mineral License Held by Situate near On map sheet	012826M Murphy, Lewis Branch River, Avalon Peninsula 01K/13 01L/16
Mineral License Held by Situate near On map sheet	010361M Mega Uranium Ltd. West Micmac Lake 13K/09E	Mineral License Held by Situate near On map sheet	012827M Murphy, Lewis Branch River, Avalon Peninsula 01L/16
Mineral License Held by Situate near On map sheet	012460M Crosshair Exploration & Mining Corp. Exploits River,Central NL 12A/09 12A/10 12A/16 12A/15	Mineral License Held by Situate near On map sheet	012828M Murphy, Lewis Branch River, Avalon Peninsula 01K/13 01L/16
Mineral License Held by Situate near On map sheet	014197M Crosshair Exploration & Mining Corp(60%)/Silver Spruce Resources Inc.(40%) Colford Lake 13K/05 13K/12	Mineral License Held by Situate near On map sheet	013957M Kennecott Canada Exploration Inc. Julienne Lake 23G/02
Mineral License Held by Situate near On map sheet	012751M Murphy, Lewis Branch River, Avalon Peninsula 01L/16	Mineral License Held by Situate near On map sheet	014060M Keats Jr, Suley West Brook,Central NL 12A/16
Mineral License Held by Situate near On map sheet	012758M Vale Inco Limited Kogaluk River 14C/04	Mineral License Held by Situate near On map sheet	014149M Alterra Resources Inc. Tasisuak Lake 14D/10
Mineral License Held by Situate near On map sheet	012773M Murphy, Lewis Branch,Avalon Peninsula 01K/13	Mineral License Held by Situate near On map sheet	014150M Alterra Resources Inc. Tasisuak Lake 14D/10
Mineral License Held by	012779M Murphy, Lewis	Mineral License Held by	014152M Alterra Resources Inc. Avakutak Bay 14E/01 14F/04
		Mineral License Held by	014153M Alterra Resources Inc.

THE NEWFOUNDLAND AND LABRADOR GAZETTE

March 6, 2009

Situate near On map sheet	Snyder Bay 14F/04	Situate near On map sheet	Kingurutik River 14D/15
Mineral License Held by Situate near On map sheet	014154M Alterra Resources Inc. Tasialuk Lake 14D/10	Mineral License Held by Situate near On map sheet	014182M Kennwood Properties Limited Kingurutik River 14D/14
Mineral License Held by Situate near On map sheet	014155M Alterra Resources Inc. Tasialuk Lake 14D/10	Mineral License Held by Situate near On map sheet	014185M Walsh, Denis F. Rencontre Brook,Southern NL 01M/11
Mineral License Held by Situate near On map sheet	014156M Alterra Resources Inc. Kingurutik Lake 14D/14 14D/15	Mineral License Held by Situate near On map sheet	014186M Hicks, Darrin Jacques Fontaine,Burin Peninsula 01M/10
Mineral License Held by Situate near On map sheet	014160M Cramm, David Northern Arm Brook, Central NL 02E/04	Mineral License Held by Situate near On map sheet	014187M Croft Engineering Ltd. Staghorn Lake 14E/02
Mineral License Held by Situate near On map sheet	014163M Alterra Resources Inc. Tally Pond,Central NL 12A/09 12A/10	Mineral License Held by Situate near On map sheet	014188M Christopher, Terry Kingurutik River 14D/15
Mineral License Held by Situate near On map sheet	014166M Alterra Resources Inc. Tasisuak Lake 14D/10 14D/09	Mineral License Held by Situate near On map sheet	014189M Christopher, Terry Kingurutik River 14D/15
Mineral License Held by Situate near On map sheet	014169M Alterra Resources Inc. Tasisuak Lake 14D/10	Mineral License Held by Situate near On map sheet	014190M Christopher, Terry Kingurutik Lake 14D/14 14D/15 14E/03 14E/02
Mineral License Held by Situate near On map sheet	014174M Alterra Resources Inc. Kingurutik Lake 14D/14 14D/15	Mineral License Held by Situate near On map sheet	014198M Arbatel Minerals and Explorations Inc. Welshs Bight, Baie Verte Peninsula 02E/13
Mineral License Held by Situate near On map sheet	014175M Alterra Resources Inc. Tasialuk Lake 14D/15	Mineral License Held by Situate near On map sheet	014199M Burton, Jason La Scie Harbour, Baie Verte Peninsula 02E/13
Mineral License Held by Situate near On map sheet	014178M Keats, Wesley Rogerson Lake,Central NL 12A/07	Mineral License Held by Situate near On map sheet	014200M Alterra Resources Inc. Kingurutik River 14D/15
Mineral License Held by Situate near On map sheet	014179M Keats, Fred Rogerson Lake,Central NL 12A/07	Mineral License Held by Situate near On map sheet	014201M Alterra Resources Inc. Tasialuk Lake 14D/10
Mineral License Held by Situate near On map sheet	014180M Keats, Fred Rogerson Lake,Central NL 12A/07	Mineral License Held by Situate near On map sheet	014202M Alterra Resources Inc. Tasialuk Lake 14D/10
Mineral License Held by	014181M Kennwood Properties Limited		

THE NEWFOUNDLAND AND LABRADOR GAZETTE
March 6, 2009

Mineral License Held by Situates near On map sheet	014205M Alterra Resources Inc. Napaktok Bay Area 14E/14 14E/15	Mineral License Held by Situates near On map sheet	014227M Christopher, Terry Tasialuk Lake 14D/15
Mineral License Held by Situates near On map sheet	014206M Alterra Resources Inc. Napaktok Bay Area 14E/11 14E/10 14E/14 14E/15	Mineral License Held by Situates near On map sheet	014228M Christopher, Terry Kingurutik River 14D/15
Mineral License Held by Situates near On map sheet	014207M Alterra Resources Inc. Napaktok Bay Area 14E/11 14E/10 14E/14	Mineral License Held by Situates near On map sheet	014229M Croft Engineering Ltd. Tasisuak Lake 14D/11
Mineral License Held by Situates near On map sheet	014208M Alterra Resources Inc. Man O'War Peak 14C/13 14F/04	Mineral License Held by Situates near On map sheet	014230M Alterra Resources Inc. Siugak Brook 14E/10
Mineral License Held by Situates near On map sheet	014209M Alterra Resources Inc. Kiglapait Tasialua Lake 14F/04	Mineral License Held by Situates near On map sheet	014231M Christopher, Terry Tasisuak Lake 14D/10
Mineral License Held by Situates near On map sheet	014210M Alterra Resources Inc. Tasisuak Lake 14D/10	Mineral License Held by Situates near On map sheet	014232M Alterra Resources Inc. Napaktok Bay Area 14E/10 14E/15
Mineral License Held by Situates near On map sheet	014215M Christopher, Terry Tasisuak Lake 14D/10	Mineral License Held by Situates near On map sheet	014233M Alterra Resources Inc. Rencontre Brook,Southern NL 01M/11 01M/14
Mineral License Held by Situates near On map sheet	014218M Michelin, Daniel Craig Atikonak Lake 23A/15	Mineral License Held by Situates near On map sheet	014234M Alterra Resources Inc. Rencontre Brook,Southern NL 01M/11
Mineral License Held by Situates near On map sheet	014220M Alterra Resources Inc. Tasisuak Lake 14D/10	Mineral License Held by Situates near On map sheet	014235M Alterra Resources Inc. Rencontre Brook,Southern NL 01M/10, 01M/11 01M/15, 01M/14
Mineral License Held by Situates near On map sheet	014222M Alterra Resources Inc. North River 14E/06	Mineral License Held by Situates near On map sheet	014241M Alterra Resources Inc. Rencontre Brook,Southern NL 01M/10
Mineral License Held by Situates near On map sheet	014224M Alterra Resources Inc. Kingurutik River 14D/11 14D/14	Mineral License Held by Situates near On map sheet	014243M Stares, Alexander T. Little Harbour East, Burin Peninsula 01M/10
Mineral License Held by Situates near On map sheet	014225M Alterra Resources Inc. West of Kingurutik Lake 14D/14	Mineral License Held by Situates near On map sheet	014244M Stares, Alexander T. Harbour Mille,Burin Peninsula 01M/10
Mineral License Held by Situates near On map sheet	014226M Croft Engineering Ltd. Tasialuk Lake 14D/10 14D/15	Mineral License Held by Situates near On map sheet	014245M Stares, Alexander T. Little Bay East,Burin Peninsula 01M/10

Mineral License Held by Situates near On map sheet	014247M Alterra Resources Inc. Tasisuak Lake 14D/10
Mineral License Held by Situates near On map sheet	014248M Alterra Resources Inc. Tasisuak Lake 14D/10
Mineral License Held by Situates near On map sheet	014249M Alterra Resources Inc. Tasisuak Lake 14D/10
Mineral License Held by Situates near On map sheet	014250M Alterra Resources Inc. Tasisuak Lake 14D/10 14D/09
Mineral License Held by Situates near On map sheet	014252M Alterra Resources Inc. Ikadlivik Brook 14D/08
Mineral License Held by Situates near On map sheet	014253M Benoit, Thomas Stephenville, Western NL 12B/10
Mineral License Held by Situates near On map sheet	014254M Alterra Resources Inc. Rencontre Brook, Southern NL 01M/11
Mineral License Held by Situates near On map sheet	014257M Christopher, Terry Tasisuak Lake 14D/11
Mineral License Held by Situates near On map sheet	014258M Intrinsic Minerals Ltd. Kingurutik River 14D/15
Mineral License Held by Situates near On map sheet	014259M Intrinsic Minerals Ltd. West of Kingurutik Lake 14D/14
Mineral License Held by Situates near On map sheet	014272M Blue Ridge Resources Inc. Kingurutik River 14D/15
Mineral License Held by Situates near On map sheet	014273M Blue Ridge Resources Inc. Kingurutik Lake 14D/14
Mineral License Held by Situates near On map sheet	014274M Benton Resources Corp. Tasiuyak Bay 14C/04 14C/03

Mineral License Held by Situates near On map sheet	014276M Alterra Resources Inc. Tasisuak Lake 14D/10
Mineral License Held by Situates near On map sheet	014277M Alterra Resources Inc. South of Tasisuak Lake 14D/10
Mineral License Held by Situates near On map sheet	014278M Alterra Resources Inc. Kingurutik River 14D/10 14D/15

A portion of license 015557M
Held by Rogers, Larry
Situates near Triton Brook, Central NL
On map sheet 02D/10
more particularly described in an application on file at
Department of Natural Resources

The lands covered by this notice except for the lands within
Exempt Mineral Lands, the Exempt Mineral Lands being
described in CNLR 1143/96 and NLR 71/98, 104/98,
97/2000, 36/2001, 31/2004, 78/2006 and 8/2008 and
outlined on 1:50 000 scale digital maps maintained by the
Department of Natural Resources, will be open for staking
after the hour of 9:00 a.m. on the 32nd clear day after the
date of this publication.

JIM HINCHEY P. Geo
Manager - Mineral Rights

File # 774: 2231, 3370, 3714, 4685, 5763, 5784, 6468, 7620,
7629, 7652, 7658, 7661, 7662, 7664, 7694, 7706, 7707, 7708,
8770, 8771, 8867, 8949, 8950, 8952, 8953, 8954, 8955, 8956,
8960, 8963, 8966, 8969, 8974, 8975, 8978, 8979, 8980, 8981,
8982, 8985, 8986, 8987, 8988, 8989, 8990, 8991, 8992, 8993,
8994, 8995, 8997, 8998, 8999, 9000, 9001, 9002, 9007, 9010,
9012, 9014, 9016, 9017, 9018, 9019, 9020, 9021, 9022, 9023,
9024, 9025, 9026, 9027, 9028, 9033, 9034, 9035, 9036, 9037,
9039, 9040, 9041, 9042, 9044, 9045, 9046, 9049, 9050, 9051,
9064, 9065, 9066, 9068, 9069, 9070, 9989

Mar 6

URBAN AND RURAL PLANNING ACT

**NOTICE OF REGISTRATION
CITY OF CORNER BROOK
MUNICIPAL PLAN AMENDMENT 2008-2
AND DEVELOPMENT REGULATIONS
AMENDMENTS 2008-3**

Take notice that the City of Corner Brook Municipal Plan
Amendment 2008-2 and Development Regulations
Amendment 2008-3, adopted on the 27th day of October,
2008, and approved on the 26th day of January, 2009, have
been registered by the Minister of Municipal and Provincial
Affairs.

In general terms, the purpose of Municipal Plan
Amendment 2008-2 is to change the land use designation

of an area of land identified as 112 Premier Drive, the former Summit Lounge property. The proposed change is from General Commercial to Residential Commercial Mix and is requested in order to permit development of a 10-unit residential apartment building with an attached office. The cost and responsibility to provide municipal services to the development are the developer's.

In general terms, the purpose of Development Regulations Amendment 2008-3 is to change the land use zoning of an area of land identified as 112 Premier Drive, the former Summit Lounge property. The proposed change is from General Commercial to Residential Commercial Mix and is requested in order to permit development of a 10-unit residential apartment building with an attached office. The cost and responsibility to provide municipal services to the development are the developer's.

The Corner Brook Municipal Plan Amendment 2008-2 and Development Regulations Amendment 2008-3 come into effect on the day that this notice is published in *The Newfoundland and Labrador Gazette*. Anyone who wishes to inspect a copy of the Corner Brook Municipal Plan Amendment 2008-2 and Development Regulations Amendment 2008-3 may do so at City Hall, Corner Brook during normal business hours.

CITY OF CORNER BROOK
City Clerk

Purchase Order No. 38865

Mar 6

**NOTICE OF REGISTRATION
CITY OF CORNER BROOK
MUNICIPAL PLAN AMENDMENT 2008-3
AND DEVELOPMENT REGULATIONS
AMENDMENTS 2008-4**

Take notice that the City of Corner Brook Municipal Plan Amendment 2008-3 and Development Regulations Amendment 2008-4, adopted on the 27th day of October, 2008, and approved on the 15th day of December, 2008, have been registered by the Minister of Municipal and Provincial Affairs.

In general terms, the purpose of Municipal Plan Amendment 2008-3 is to change the land use designation of a portion of land located at the rear of the property at 8 Charles Street. The proposed change is from Light Industrial to Residential and is requested in order to consolidate the lot as a completely residential property.

In general terms, the purpose of Development Regulations Amendment 2008-4 is to change the land use zoning of a portion of land located at the rear of the property at 8 Charles Street. The proposed change is from Light Industrial to Residential Medium Density and is requested in order to consolidate the lot as a completely residential property.

The Corner Brook Municipal Plan Amendment 2008-3 and Development Regulations Amendment 2008-4 come into effect on the day that this notice is published in *The Newfoundland and Labrador Gazette*. Anyone who wishes to inspect a copy of the Corner Brook Municipal Plan Amendment 2008-3 and Development Regulations Amendment 2008-4 may do so at City Hall, Corner Brook during normal business hours.

CITY OF CORNER BROOK
City Clerk

Purchase Order No. 38865

Mar 6

CHANGE OF NAME ACT

C-8 RSNL 1990

**NOTICE OF APPLICATION
FOR CHANGE OF NAME**

NOTICE is hereby given that an application will be made to the Minister of Government Services for a change of name, pursuant to the provisions of the *Change of Name Act*, by me:-

JOANNE M. BENNETT

of P. O. Box 76, York Harbour, A0L 1L0, in the Province of Newfoundland and Labrador, as follows:

To change my minor unmarried child's name from

JAXON ANTHONY BENNETT

to

JAXON RICHARD ANTHONY PARK

DATED this 11th day of February, 2009.

JOANNE M. BENNETT
(Signature of Applicant)

Mar 6

**NOTICE OF APPLICATION
FOR CHANGE OF NAME**

NOTICE is hereby given that an application will be made to the Minister of Government Services for a change of name, pursuant to the provisions of the *Change of Name Act*, by me:-

JUDY NETTA BRIDGER

of P. O. Box 194, Straitsview, A0K 2K0, in the Province of Newfoundland and Labrador, as follows:

To change my minor unmarried child's name from

AUSTIN BARRY KING

to

AUSTIN BARRY GILBERT BRIDGER

DATED this 6th day of January, 2009.

JUDY NETTA BRIDGER
(Signature of Applicant)

Mar 6

**NOTICE OF APPLICATION
FOR CHANGE OF NAME**

NOTICE is hereby given that an application will be made to the Minister of Government Services for a change of name, pursuant to the provisions of the *Change of Name Act*, by me:-

JOSEPH FRANCIS COLSON

of 108 Georgia Drive, Stephenville, A2N 2T7, in the Province of Newfoundland and Labrador, as follows:

To change my name from

JOSEPH FRANCIS COLSON
to
JOSEPH FRANK ROBERTS

DATED this 25th day of February, 2009.

JOSEPH FRANCIS COLSON
(Signature of Applicant)

Mar 6

**NOTICE OF APPLICATION
FOR CHANGE OF NAME**

NOTICE is hereby given that an application will be made to the Minister of Government Services for a change of name, pursuant to the provisions of the *Change of Name Act*, by me:-

CINDY MARIA HOUSE

of 80 Byrd Avenue, Gander, A1V 2A6, in the Province of Newfoundland and Labrador, as follows:

To change my name from

CINDY MARIA HOUSE
to
CINDY MARIA CLANCEY

DATED this 22nd day of January, 2009.

CINDY MARIA HOUSE
(Signature of Applicant)

Mar 6

**NOTICE OF APPLICATION
FOR CHANGE OF NAME**

NOTICE is hereby given that an application will be made to the Minister of Government Services for a change of name, pursuant to the provisions of the *Change of Name Act*, by me:-

CRYSTAL-LEE KELLY

of P. O. Box 104, Parson's Pond, A0K 3Z0, in the Province of Newfoundland and Labrador, as follows:

To change my minor unmarried child's name from

CALEB PETER YOUNG
to
CALEB PETER YOUNG KELLY

DATED this 16th day of December, 2009.

CRYSTAL-LEE KELLY
(Signature of Applicant)

Mar 6

**NOTICE OF APPLICATION
FOR CHANGE OF NAME**

NOTICE is hereby given that an application will be made to the Minister of Government Services for a change of name, pursuant to the provisions of the *Change of Name Act*, by me:-

JESSE LUKE IQUALLA

of 76 Pennywell Road, St. John's, in the Province of Newfoundland and Labrador, as follows:

To change my name from

JESSE LUKE IQUALLA
to
JESSE LUKE COX

DATED this 2nd day of March, 2009.

JESSE LUKE IQUALLA
(Signature of Applicant)

Mar 6

LANDS ACT

NOTICE OF INTENT

LANDS ACT, c36, SNL 1991

Notice is hereby given that BRIAN DELANEY of Holyrood intends to apply to the Department of Environment and Conservation, two months from the publication of this Notice, to acquire title, pursuant to Section 7(2) (e) of the said Act, to that piece of Crown Land situated within fifteen (15) metres of the waters of Grand Pond, in the Electoral District of Port de Grave for the purpose of constructing a boathouse and wharf and being more particularly described as follows:

*Bounded on the North by Crown Land
for a distance of 6 m;*

*Bounded on the East by Brian Delaney
for a distance of 7.6 m;*

*Bounded on the South by Crown Land
for a distance of 6 m*

*Bounded on the West by Grand Pond
for a distance of 7.6 m;*

*and containing an area of
approximately 50 square metres.*

(Choose Area Applicable)

Any person wishing to object to the application must file the objection, in writing, within one month from the

publication of this notice, with reasons for it, to the Minister of Environment and Conservation, and mail to the nearest Regional Lands Office:

c/o Eastern Regional Lands Office, P. O. Box 8700, 5 Mews Place, St. John's, NL, A1B 4J6.

c/o Central Regional Lands Office, P. O. Box 2222, Gander, NL, A1V 2N9.

c/o Western Regional Lands Office, P. O. Box 2006, Noton Building, Corner Brook, NL, A2H 6J8.

c/o Labrador Regional Lands Office, P. O. Box 3014, Station "B", Happy Valley-Goose Bay, NL A0P 1E0.

For further information on the proposed application, please contact Brian Delaney, Telephone (709) 229-7202.

Mar 6

NOTICE OF INTENT

LANDS ACT, c36, SNL 1991

Notice is hereby given that TENAJON RESOURCES CORP of Vancouver, B.C. intends to apply to the Department of Environment and Conservation, two months from the publication of this Notice, to acquire title, pursuant to Section 7(2)(e) of the said Act, to that piece of Crown Land situated within fifteen (15) metres of the waters of Long Pond, in the Electoral District of Burgeo LaPoile for the purpose of a wharf and being more particularly described as follows:

*Bounded on the North by Crown Land
for a distance of 1.5 m;
Bounded on the East by Water
for a distance of 2 m;
Bounded on the South by Water
for a distance of 1.5 m
Bounded on the West by Water
for a distance of 2 m;
and containing an area of
approximately 3 square metres.*

(Choose Area Applicable)

Any person wishing to object to the application must file the objection, in writing, within one month from the publication of this notice, with reasons for it, to the Minister of Environment and Conservation, and mail to the nearest Regional Lands Office:

c/o Eastern Regional Lands Office, P. O. Box 8700, 5 Mews Place, St. John's, NL, A1B 4J6.

c/o Central Regional Lands Office, P. O. Box 2222, Gander, NL, A1V 2N9.

c/o Western Regional Lands Office, P. O. Box 2006, Noton Building, Corner Brook, NL, A2H 6J8.

c/o Labrador Regional Lands Office, P. O. Box 3014, Station "B", Happy Valley-Goose Bay, NL A0P 1E0.

For further information on the proposed application, please contact GeoScott Exploration, Telephone (709) 738-3355.

Mar 6

QUIETING OF TITLES ACT

**2009 05T 0189
IN THE SUPREME COURT OF
NEWFOUNDLAND AND LABRADOR
TRIAL DIVISION**

NOTICE OF APPLICATION under the *Quieting of Titles Act*, cQ-3, of RSNL

Notice is hereby given to all parties that NEIL POWER, of Fort McMurray, in the Province of Alberta, has applied to the Supreme Court, Trial Division, Gander, to have title to all that piece or parcel of property situate at Long Harbour, in the Province of Newfoundland and Labrador, which property is more particularly described in Schedule "A" hereto annexed and shown in Schedule "B" hereto annexed.

ALL BEARINGS aforementioned, for which NEIL POWER claims to be the owner investigated and for a Declaration that he is the absolute owner in fee simple in possession and the said. NEIL POWER has been ordered to public Notice of Application as required by the above named Act. All persons having title adverse to the said title claimed by the said NEIL POWER shall file in the Registry of the Supreme Court of Newfoundland and Labrador, Trial Division, Gander, particulars of such adverse claim and serve the same together with an Affidavit verifying same on the undersigned Solicitors for the Petitioner on or before the 30th day of March, 2009, after which date no party having any claim shall be permitted to file the same or to be heard except by special leave of the Court and subject to such conditions as the Court may deem just.

All such adverse claims shall be investigated then in such manner as the Supreme Court of Newfoundland and Labrador, Trial Division, Gander, may direct.

DATED AT Clarenville, in the Province of Newfoundland and Labrador, this 2nd day of March, 2009

MILLS, HUSSEY & PITTMAN PLC INC.
Solicitors for the Applicant
PER: Gregory K Pittman

ADDRESS FOR SERVICE:
111 Manitoba Drive,
Suite 201
Clarenville, NL A5A IK2
Tel: 709-466-2641
Fax: 709-466-7109

SCHEDULE "A"
 NEIL POWER,

Long Harbour Crossing, Long Harbour, NL

All that piece or parcel of land situate and being on the southwestern side of the abandoned CNR Railway, near the town of Long Harbour, in the Provincial Electoral District of Bellevue, in the province of Newfoundland and Labrador, Canada, abutted and bounded as follows, that is to say:

Beginning at a point, said point being the northwestern corner of the land and having grid co-ordinates of North 5,259,015.180 meters and East 249,672.250 meters;

Thence running along the southwestern limit of a ten (10) meter wide Reservation for a brook, South thirty two degrees seventeen minutes thirty nine seconds West ($32^{\circ} 17' 39''$ W), a distance of sixty decimal seven eight four meters (60,784m);

Thence South forty eight degrees seven minutes twenty one seconds West ($S 48^{\circ} 07' 21''$ W), a distance of twenty six decimal four one six meters (26.416 m);

Thence running along Crown Land South thirty six degrees thirteen minutes forty seven seconds East ($S36^{\circ} 13' 47''$ E), a distance of ninety decimal nine one six meters (90.916 m);

Thence running along the northwestern limit of the Old Highway, twenty (20) meters wide, North forty degrees forty eight minutes thirty four seconds East ($N 40^{\circ} 48' 34''$ E), a distance of eighty five decimal zero one six meters (85.016m);

Thence running along the southwestern limit of the aforementioned abandoned C.N.R. Railway, thirty decimal four eight (30.48) meters wide, North thirty six degrees thirteen minutes forty four seconds West ($N 36^{\circ} 13' 44''$ W), a distance of ninety six decimal seven zero two meters (96.702 m), more or less, to the point of beginning.

The above described parcel containing an area of zero decimal seven five five (0.755) hectares, more or less.

All bearings are referred to the meridian of fifty three degrees West longitude of the Modified Three Degree Transverse Mercator Projection for Newfoundland and Labrador with NAD 83 reference datum.

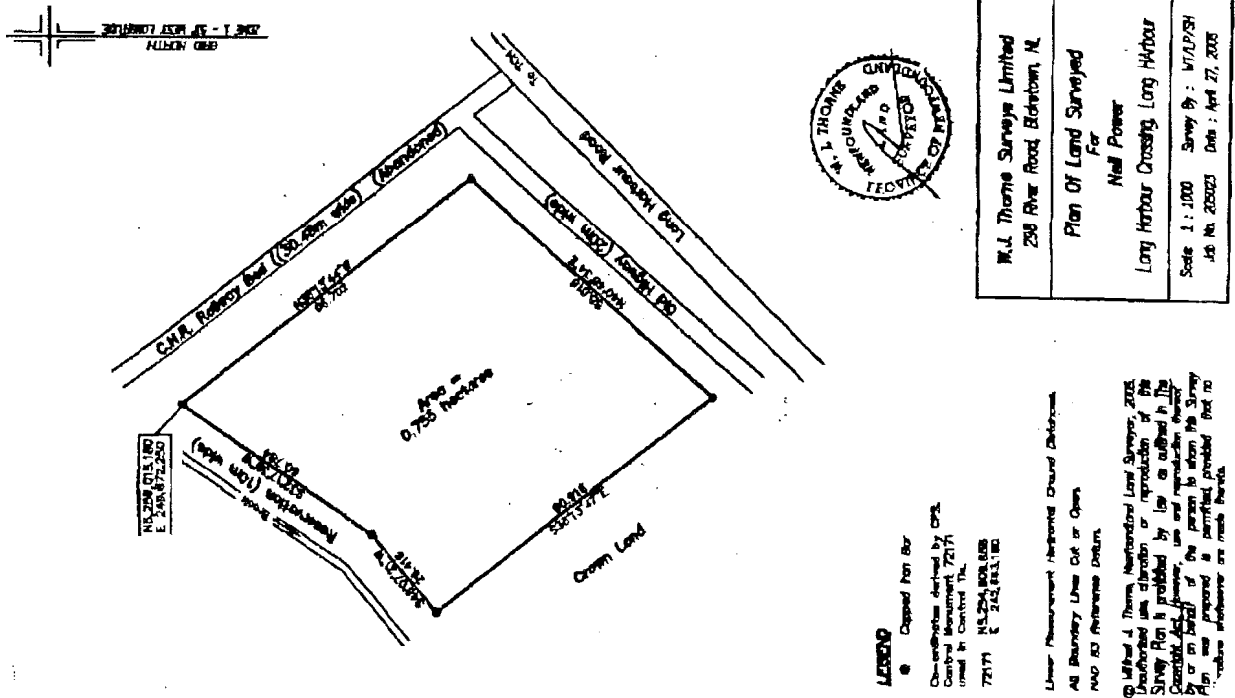


EXHIBIT "A"
2008 ST. J. NO. 0850
IN THE SUPREME COURT OF
NEWFOUNDLAND AND LABRADOR
TRIAL DIVISION

IN THE MATTER OF the *Quieting of Titles Act*, RSNL 1990, cQ-3, as amended

AND IN THE MATTER OF an Application of GUARDIAN BUILDING PRODUCTS DISTRIBUTION CANADA, INC., pursuant to the said Act

AND IN THE MATTER OF two pieces or parcels of land situate and being on the western side of Trout Place, in the City of Mount Pearl, and on the northeast of Stentaford Avenue, in the Town of Pasadena in the Province of Newfoundland and Labrador, Canada (the "Lands").

NOTICE OF APPLICATION

ALL PARTIES TAKE NOTICE THAT GUARDIAN BUILDING PRODUCTS DISTRIBUTION CANADA, INC., a Corporation duly incorporated under the *Canada Business Corporations Act*, has applied to the Supreme Court of Newfoundland and Labrador, Trial Division to have the title of a parcel of land being on the western side of Trout Place, in the City of Mount Pearl, hereinafter more particularly described by the metes and bounds descriptions and surveys annexed hereto as Schedule "A", investigated and for a declaration that the said GUARDIAN BUILDING PRODUCTS DISTRIBUTION CANADA, INC. is the absolute owner thereof in fee simple. A full scale copy of the surveys found in Schedule "A" are available for inspection at the offices of the undersigned solicitors for the Applicant Corporation.

All persons having title adverse to the said title claimed by GUARDIAN BUILDING PRODUCTS DISTRIBUTION CANADA, Inc. shall file at the Registry of the Supreme Court, Trial Division, particulars of such adverse claim and serve the same together with an affidavit verifying the same to the undersigned solicitors for the Applicant Corporation on or before the 6th day of April, 2009, after which date no party having any claim shall be permitted to file the same or be heard except by special leave of the Court and subject to such conditions as the Court may deem just. All such adverse claims shall then be investigated in such manner as the said Supreme Court of Newfoundland and Labrador, St. John's, may direct.

DATED at the City of St. John's, in the Province of Newfoundland and Labrador this 20th day of February, 2009.

STEWART McKELVEY
Solicitors for the Applicant
PER: Neil L. Jacobs

ADDRESS FOR SERVICE:
Suite 1100, Cabot Place
100 New Gower Street
P.O. Box 5038
St. John's, NL A1C 5V3
Tel: 709-722-4270
Fax 709-722-4565

SCHEDULE "A"
LEGAL SURVEY

CIVIC No.4 TROUT PLACE
MOUNT PEARL NL
September 8, 2006 Job No. 7762

ALL THAT piece or parcel of land, situate and being on the Western side of Trout Place, in the city of Mount Pearl, in the Province of Newfoundland & Labrador, Canada, and being bounded and abutted as follows: THAT IS TO SAY, beginning at a point on the western side of Trout Place, said point having coordinates N 5 265 159.908 metres and E 318 397.275 metres of the Three Degree Modified Transverse Mercator Projection NAD - 83 for the Province of Newfoundland & Labrador, THENCE by property of Entertainment Enterprises Limited N 76°39'16" W for a distance of 103.630 metres, THENCE by property of Lloyd Walker N 03°02'15" W for a distance of 46.988 metres, THENCE N 13°49'58" E for a distance of 19.418 metres, THENCE by property of Family Cycle Limited and by property of 10555 Newfoundland Limited S 75°36'00" E for a distance of 97.543 metres, THENCE along the western side of Trout Place S 03°40'30" E for a distance of 65.575 metres, more or less, to the point of beginning and containing an area of 6513 square metres, more or less. Which land is more particularly shown on the plan hereto attached. All bearings being referenced to the above mentioned projection. All linear measurements are horizontal ground distances.

There is a Utility Easement along the southern boundary of the property, as shown on the attached plan.

This description and accompanying plan, Job # 7762 of Brown & Way Surveys, form an integral part of the returns and are not separable.

SURVEYORS REAL PROPERTY REPORT

Prepared By: Brown & Way Surveys
Robert A. Way, N.L.S.
Certified To: Cameron Ashley Canada Inc.
Parcel Location: 4 Trout Place
Mount Pearl, NL
Reference Survey: Current

Structures and other improvements:
The buildings shown on the attached plan are contained wholly within the boundaries of property situate at 4 Trout Place, in the City of Mount Pearl, NL.

Apparent encroachments and/or comments:
There is a Utility Easement along the southern boundary of the property, as shown on the attached plan. There are four

overhead wires crossing the property and two poles on the property, each as shown on the attached plan. Fences are erected as shown on the attached plan.

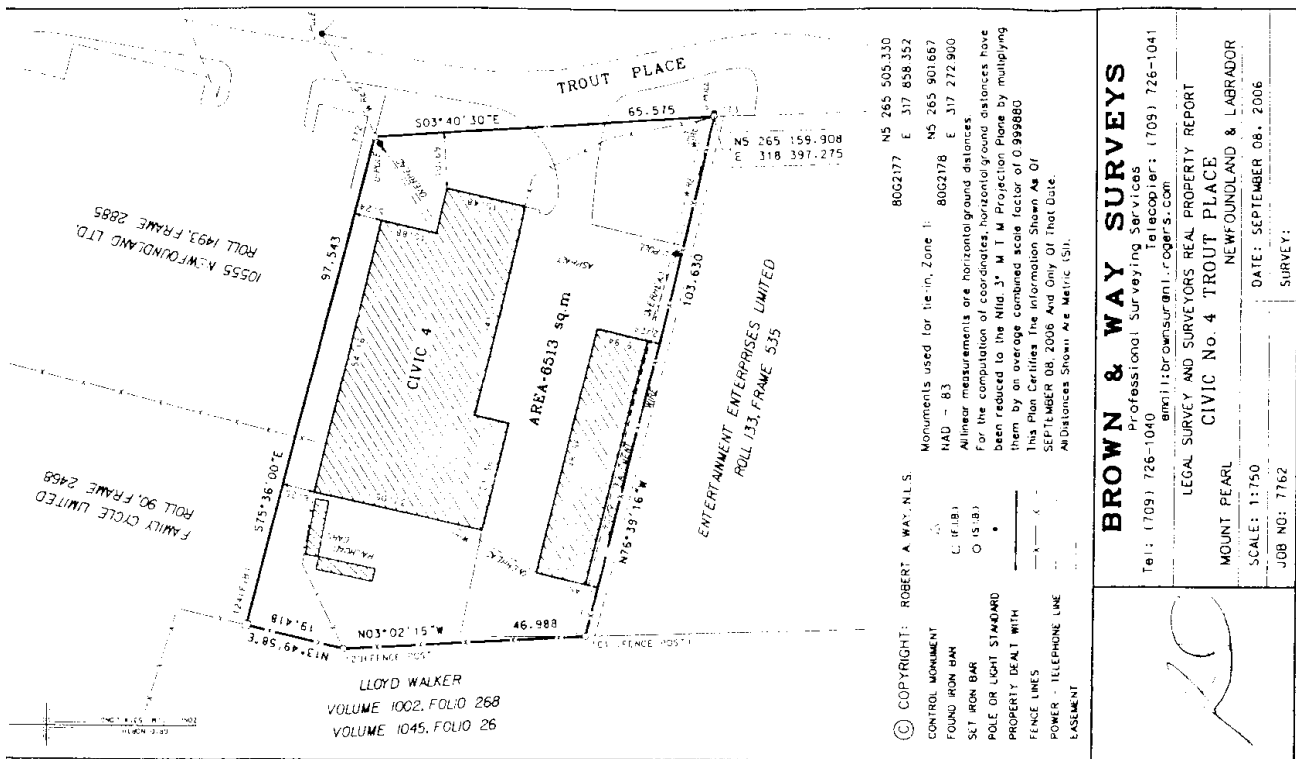
Qualifications:

This report and its accompanying Plan No. 7762 form an integral part of the whole and are not separable. This report has been prepared for the sole use and benefit of the party to whom the same is certified. This document is not valid unless it bears the original signature and stamp of the Newfoundland Land Surveyor identified hereafter.

Surveyor's certification: The location of the structures and improvements are as shown on the accompanying plan. As a registered Newfoundland Land Surveyor, I hereby certify that this Surveyors Real Property Report was conducted under my supervision and is in accordance with the Newfoundland *Land Surveyors Act*. RSNL, and the bylaws made thereunder.

Signed and sealed at St. John's, NL This 8th day of September., 2006.

Copyright: Robert A. Way, Newfoundland Land Surveyor, 2006. Unauthorized use, alteration or reproduction of this Surveyor's Real Property Report is prohibited by law as outlined in the *Copyright Act*. However, use and reproduction thereof by or on behalf of the person to whom this Report is certified is permitted, provided that no alterations whatsoever are made thereto. This document was prepared for the person(s) named above. Any use which a third party makes of this report, or any reliance or decisions to be made based on it, are the sole responsibility of such third parties. Brown & Way Surveys and or Robert Way/Peter Brown accepts no responsibility whatever for damages, if any, suffered by any third party as a result of decisions or actions made based on this document.



Mar 6

EXHIBIT "B"
2008 ST. J. NO. 0850
IN THE SUPREME COURT OF
NEWFOUNDLAND AND LABRADOR
TRIAL DIVISION

IN THE MATTER OF the *Quieting of Titles Act*, RSNL, 1990, cQ-3, as amended

AND IN THE MATTER OF an Application of GUARDIAN BUILDING PRODUCTS DISTRIBUTION CANADA, INC., pursuant to the said Act

AND IN THE MATTER OF two pieces or parcels of land situate and being on the western side of Trout Place. in the City of Mount Pearl, and on the northeast of Stentaford Avenue, in the Town of Pasadena in the Province of Newfoundland and Labrador, Canada (the "Lands").

NOTICE OF APPLICATION

TAKE NOTICE THAT GUARDIAN BUILDING PRODUCTS DISTRIBUTION CANADA, INC.. a Corporation duly incorporated under the *Canada Business Corporations Act*, has applied to the Supreme Court of Newfoundland and Labrador, Trial Division to have the title of a parcel of land being on the northeast of Stentaford Avenue, in the Town of Pasadena. hereinafter more particularly described by the metes and bounds descriptions and surveys annexed hereto as Schedule "A" investigated and for a declaration that the said GUARDIAN BUILDING PRODUCTS DISTRIBUTION CANADA, INC. is the absolute owner thereof in fee simple. A full scale copy of the surveys found in Schedule "A" are available for inspection at the offices of the undersigned solicitors for the Applicant Corporation.

All persons having title adverse to the said title claimed by GUARDIAN BUILDING PRODUCTS DISTRIBUTION CANADA, INC. shall file at the Registry of the Supreme Court, Trial Division, particulars of such adverse claim and serve the same together with an affidavit verifying the same to the undersigned solicitors for the Applicant Corporation on or before the 6th day of April, .2009, after which date no party having any claim shall be permitted to file the same or be heard except by special leave of the Court and subject to such conditions as the Court may deem just.

All such adverse claims shall then be investigated in such manner as the said Supreme Court of Newfoundland and Labrador, St. John's, may direct. DATED at the City of St. John's, in the Province of Newfoundland and Labrador this 6th day of April, 2009.

STEWART McKELVEY
Solicitors for the Applicant
PER: Neil L. Jacobs

ADDRESS FOR SERVICE:
Suite 1100, Cabot Place
100 New Gower Street
P.O. Box 5038
St. John's, NL A1C 5V3
Tel: 709-722-4270
Fax 709-722-4565

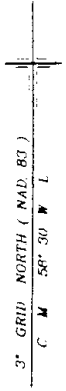
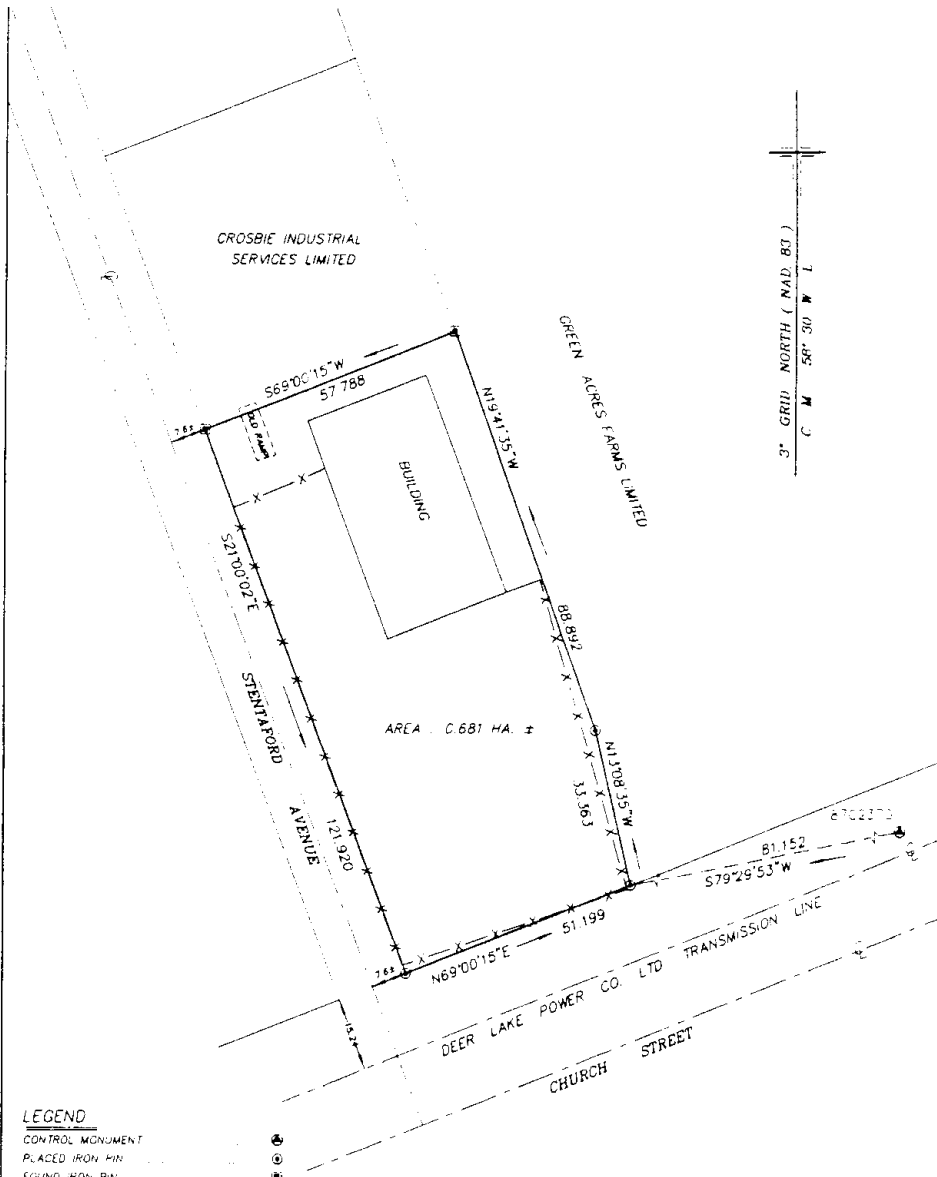
SCHEDULE A
DESCRIPTION OF LAND FOR
CAMERON ASHLEY CANADA INC.

2 - 6 Stentaford Avenue, Pasadena, NL

All that piece or parcel of land lying northeast of Stentaford Avenue, in the Town of Pasadena, in the Province of Newfoundland and Labrador, being further bounded and described as follows:

Beginning at a point on the northwest limit of the Deer Lake Power Company Limited Transmission Line, the said point being found by running from monument no. 87G2370, south seventy nine degrees twenty nine minutes fifty three seconds west (S 79° 29' 53" W) eighty one decimal one five two (81.152) metres; RUNNING THENCE from the above described point of beginning by land of Green Acres Farms Limited, north thirteen degrees eight minutes thirty five seconds west (N 13°-08' 35" W) thirty three decimal three six three (33.363) metres, and north nineteen degrees forty one minutes thirty five seconds west (N 19° 41' 35" W) eighty eight decimal eight nine two (88.892) metres; THENCE RUNNING by land of Crosbie Industrial Services Limited, south sixty nine degrees zero minutes fifteen seconds west (S 69° 00' 15" W) fifty seven decimal seven eight eight (57.788) metres; THENCE RUNNING by the northeast limit of Stentaford Avenue, south twenty one degrees zero minutes two seconds east (S 21° 00' 02" E) one hundred twenty one decimal nine two zero (121.920) metres; THENCE RUNNING by the northwest limit of the Deer Lake Power Company Limited Transmission Line, north sixty nine degrees zero minutes fifteen seconds east (N 69° 00' 15" E) fifty one decimal one nine nine (51.199) metres, more or less, to the point of beginning; Containing an area of zero decimal six eight one (0.681) hectare, more or less, and being more particularly shown on Yates and Woods Limited drawing no. 06176, dated August 17, 2006; All bearings refer to 3° Grid North (NAD 1983) as referred to the Transverse Mercator Projection for Newfoundland with the Central Meridian at 58°-30' west longitude;

Yates and Woods Limited



LEGEND

- CONTROL MONUMENT
- PLACED IRON PIN
- FOUND IRON PIN
- POLE OR LIGHT STANDARD
- PROPERTY
- PROPERTY DEALT WITH
- FENCE POST
- FENCE LINES
- GUY WIRE
- POWER-TELEPHONE LINES
- EASEMENTS
- CENTERLINE

REFERENCE MONUMENTS 8702370 N 5.43; 612123 E 37; 131971

ALL DISTANCES ARE HORIZONTAL GROUND DISTANCES MEASURED IN METERS (NO SCALE FACTOR)

YATES AND WOODS LTD.
 NEWFOUNDLAND LAND SURVEYORS
 CO-OP BLDG. 5 PARK STREET P.O. BOX 434 CORNER BROOK, NF.
 A2H 6E3 TEL. 639-9177 E-mail: yatewood@nf.aibn.com

SURVEY PLAN OF LAND FOR
 CAMERON ASHLEY CANADA INC. CIVIC NOS. 2 - 6, STENTAFORD AVE
 PASADENA, DISTRICT OF HUMBER EAST, NL.

SCALE: 1 : 1000	DWG. NO. 06176	DRAWN BY K B E	DATE: AUG. 17, 2006
-----------------	----------------	----------------	---------------------

2009 01 T 0711
IN THE SUPREME COURT OF
NEWFOUNDLAND AND LABRDOR
TRIAL DIVISION

IN THE MATTER OF an Application of ALEXANDER COWAN and FLORENCE COWAN of the City of Mount Pearl, in the Province of Newfoundland and Labrador

AND

IN THE MATTER OF the *Quieting of Titles Act*, cQ-3, of the RSNL 1990 and amendments thereto

AND

IN THE MATTER OF a piece or parcel of land situate and being on Blackmarsh Road in the City of Mount Pearl, in the Province of Newfoundland and Labrador

Notice of Application under the *Quieting of Titles Act*, cQ-3 of the RSNL 1990 and amendments thereto

NOTICE IS HEREBY GIVEN to all parties that ALEXANDER COWAN and FLORENCE COWAN have applied to the Supreme Court of Newfoundland and Labrador, Trial Division, to have the title to ALL THAT piece or parcel of land situate and being on Blackmarsh Road, within the jurisdiction of the City of Mount Pearl, in the Province of Newfoundland and Labrador and being more particularly described in the Schedule hereunto attached and marked "A" of which the said ALEXANDER COWAN and FLORENCE COWAN claims on their behalf to be the owners investigated and they request a declaration that the said ALEXANDER COWAN and FLORENCE COWAN are the legal and beneficial owners in possession and the said Court having ordered that Notice of the said Application be published as required by the above named Act.

All persons having title adverse to the said title claimed by ALEXANDER COWAN and FLORENCE COWAN shall file in the Registry of the Supreme Court of Newfoundland and Labrador particulars of such adverse claim and serve the same together with an Affidavit verifying the same on the undersigned Solicitors for the Applicants on or before the 26th day of March, 2009, after which date no party having any claim shall be permitted to file the same or to be heard except by special leave of the Court and subject to such conditions as the Court may deem just.

All such adverse claims shall then be investigated in such manner as the said Supreme Court may direct.

DATED at St. John's, this 19th day of February, 2009.

BENSON MYLES PLC INC.
Solicitors for the Applicant
PER: Gary F. Peddle

ADDRESS FOR SERVICE
Suite 900 Atlantic Place, 215 Water Street
P.O. Box 1538
St. John's, NL A1C 5N8
Tel: 709-579-2081
Fax 709-579-2647

SCHEDULE A	
December 2008	Job No. 08-653-1
DESCRIPTION	
Parcel No.1	
Blackmarsh Road	Mount Pearl, NL

ALL that piece or parcel of land situate and being on the northwestern side of Blackmarsh Road at Mount Pearl, Newfoundland & Labrador, in the electoral district of Mount Pearl North and being bounded and abutted as follows, that is to say:

BEGINNING at a point on the northwestern side of Blackmarsh Road, at Mount Pearl, said point having coordinates of North 5 265 538.002 metres and East 321 102.870 metres in the Modified Three Degree Transverse Mercator Projection for the province of Newfoundland and Labrador, Zone One;

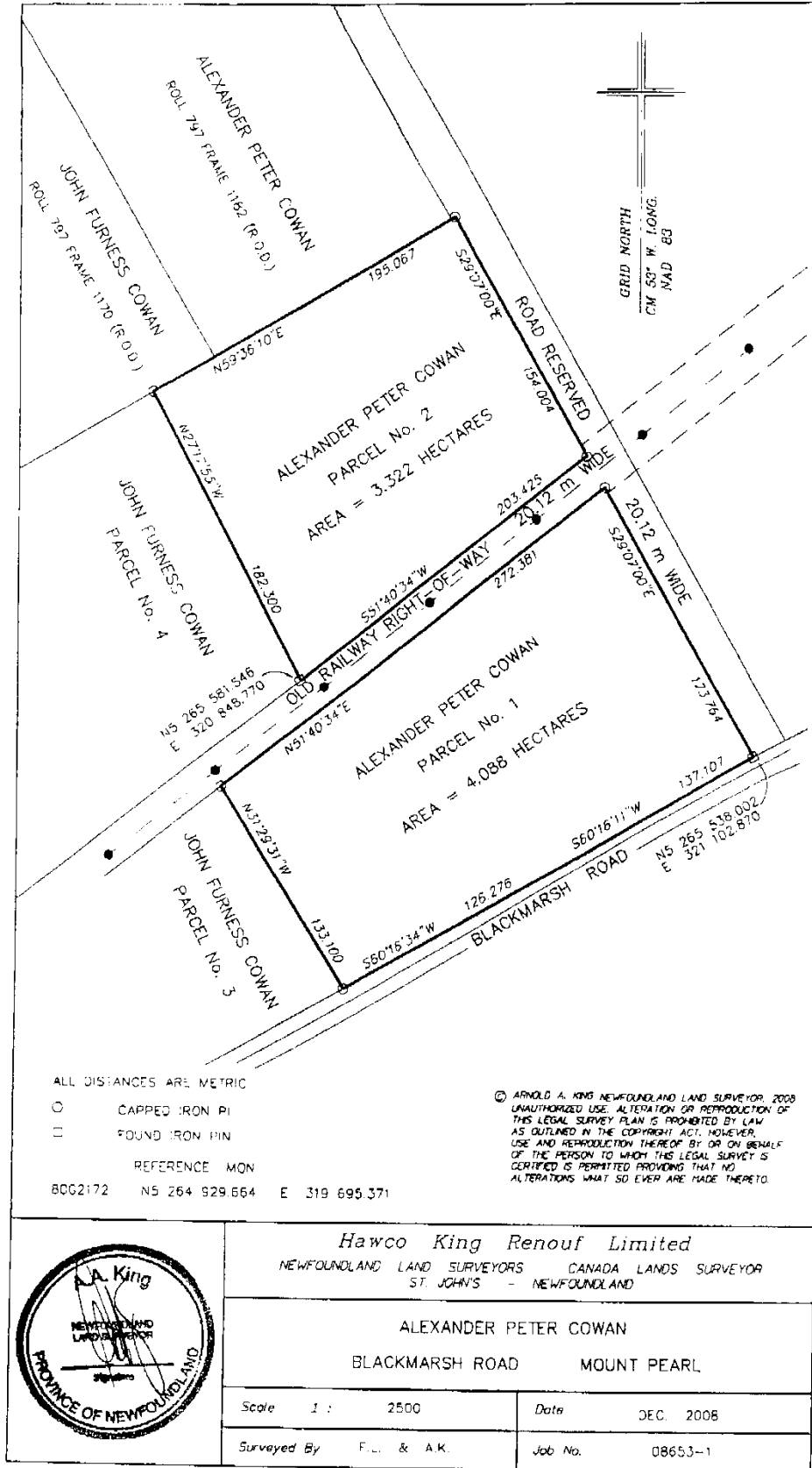
THENCE running along the northwestern side of Blackmarsh Road, South 60° 16' 11" West, 137.107 metres; thence South 60° 16' 34" West, 126.276 metres;

THENCE turning and running along the land of John Furness Cowan, Parcel No.3, North 31°29' 31" West, 133.100 metres;

THENCE turning and running along an Old Railway Right-of-Way, 20.12 metres wide, North 51° 40' 34" East, 272.381 metres;

THENCE turning and running along a Road Reserve, 20.12 metres wide, South 29° 01' 00" East, 173.764 metres, more or less, to the point of commencement and containing an area of 4.088 hectares, as shown on the attached plan, Job No. 08-653-1 dated December, 2008.

All bearings are Grid bearings referred to Grid North. All distances are horizontal ground distances.



THE NEWFOUNDLAND AND LABRADOR GAZETTE
 March 6, 2009

December 2008 Job No. 08-653- J
 DESCRIPTION
 Parcel No.2
 Blackmarsh Road Mount Pearl, NL

THENCE turning and running along the land of John Furness Cowan, roll 797 frame 1170 and along the land of Alexander Peter Cowan, toll 797 frame 1182, North 59° 36' 10" East, 195.067 metres;

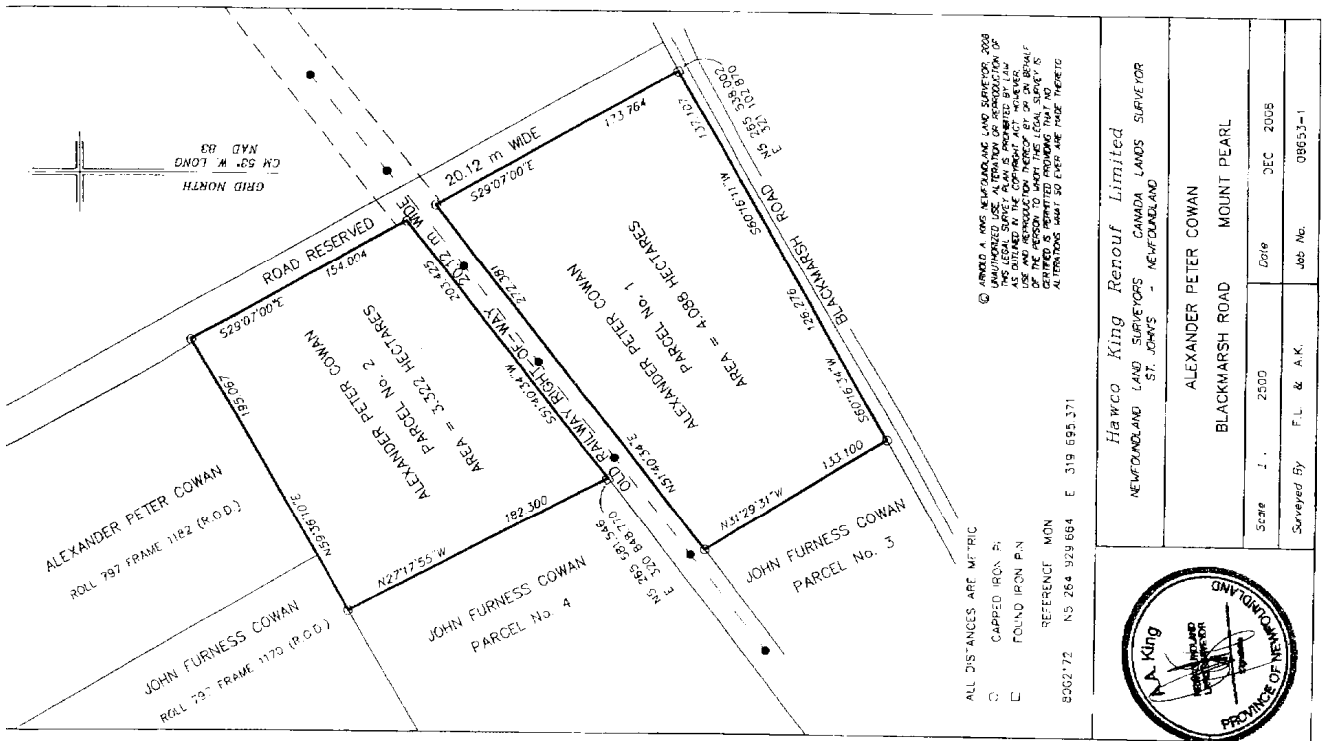
ALL that piece or parcel of land situate and being northwest of Blackmarsh Road at Mount Pearl, Newfoundland & Labrador, in the electoral district of Mount Pearl North and being bounded and abutted as follows, that is to say:

THENCE turning and running along a Road Reserve, 20.12 metres wide, South 29° 07' 00" East, 154.004 metres; THENCE turning and running along an Old Railway Right-of-Way, 20.12 metres wide, South 51° 40' 34" West, 203.425 metres, more or less, to the point of commencement, and containing an area of 3.322 hectares, as shown on the attached plan, Job No- 08-653-1 dated December 2008.

BEGINNING at a point northwest of Blackmarsh Road, at Mount Pearl, said point having coordinates of North 5 265 581.546 metres and East 320848.770 metres in the Modified Three Degree Transverse Mercator Projection for the province of Newfoundland and Labrador, Zone One;

All bearings are Grid bearings referred to Grid North. All distances are horizontal ground distances.

THENCE running along the land of John Furness Cowan, Parcel No.4, North 27° 17' 55" West, 182.300 metres;



Mar 6

2009 01 T 0767
IN THE SUPREME COURT OF
NEWFOUNDLAND AND LABRADOR
TRIAL DIVISION

IN THE MATTER OF an Application of GERALD DOOLEY, Executor of the Estate of Sarah Dooley of the City of St. John's, in the Province of Newfoundland and Labrador

AND

IN THE MATTER OF the *Quieting of Titles Act*, cQ-3, of the RSNL, 1990, and amendments thereto

AND

IN THE MATTER OF a piece or parcel of land situate and being on Blackmarsh Road in the City of Mount Pearl, in the Province of Newfoundland and Labrador

Notice of Application under the *Quieting of Titles Act*, cQ-3 of the RSNL 1990 and amendments thereto

NOTICE IS HEREBY GIVEN to all parties that GERALD DOOLEY, Executor of the Estate of Sarah Dooley has applied to the Supreme Court of Newfoundland and Labrador, Trial Division, to have the title to ALL THAT piece or parcel of land situate and being on Blackmarsh Road, within the jurisdiction of the City of Mount Pearl, in the Province of Newfoundland and Labrador and being more particularly described in the Schedule hereunto attached and marked "A" of which the said GERALD DOOLEY, Executor of the Estate of Sarah Dooley claims on behalf of the Estate of Sarah Dooley to be the owner investigated and he requests a declaration that the said Estate of Sarah Dooley is the legal and beneficial owner in possession and the said Court having ordered that Notice of the said Application be published as required by the above named Act.

All persons having title adverse to the said title claimed by the Estate of Sarah Dooley shall file in the Registry of the Supreme Court of Newfoundland and Labrador particulars of such adverse claim and serve the same together with an Affidavit verifying the same on the undersigned Solicitors for the Applicants on or before the 26th day of March, 2009, after which date no party having any claim shall be permitted to file the same or to be heard except by special leave of the Court and subject to such conditions as the Court may deem just.

All such adverse claims shall then be investigated in such manner as the said Supreme Court may direct.

DATED at St. John's, this 19th day of February, 2009.

BENSON MYLES PLC INC.
Solicitors for the Applicant
PER: Gary F. Peddle

ADDRESS FOR SERVICE:
Suite 900 Atlantic Place, 215 Water Street
P.O. Box 1538
St. John's, NF, A1C 5N8
Tel: 709 579-2081
Fax: 709 579-2647

Mar 6

SCHEDULE A

December 2008
Blackmarsh Road,

Job No. 08-653-4
Mount Pearl, NL

ALL that piece or parcel of land situate and being on the northwestern side of Blackmarsh Road at Mount Pearl, Newfoundland & Labrador, in the electoral district of Mount Pearl North and being bounded and abutted as follows, that is to say:

BEGINNING at a point on the northwestern side of Blackmarsh Road, at Mount Pearl, said point having coordinates of North 5 265 232.035 metres and East 320 577.092 metres in the Modified Three Degree Transverse Mercator Projection for the province of Newfoundland and Labrador, Zone One;

THENCE running along the northwestern side of Blackmarsh Road, South 49° 15' 00" West, 124.265 metres;

THENCE turning and running along the land of Gerald Dooley, Civic No. 1034 Blackmarsh Road, volume 843 folio 395, North 41 °10' 00" West, 45.720 metres; thence South 48 ° 50' 00" West, 38.100 metres;

THENCE turning and running along the land of Walter & Robert Dooley, Civic No.1040 Blackmarsh Road, volume 2874 folio 347, North 41° 10' 00" West, 15.240 metres; thence South 49° 14' 00" West, 38.100 metres; thence South 41° 10' 00" East, 60.960 metres;

THENCE turning and running along the northwestern side of Blackmarsh Road, South 54° 14' 00" West, 27.295 metres; thence South 69° 41' 01" West, 25.488 metres;

THENCE turning and running along the land of Marguerite Mullett, Registration No. 264034, North 24° 28' 00" West, 60.960 metres; thence South 64° 49' 00" West, 23.424 metres;

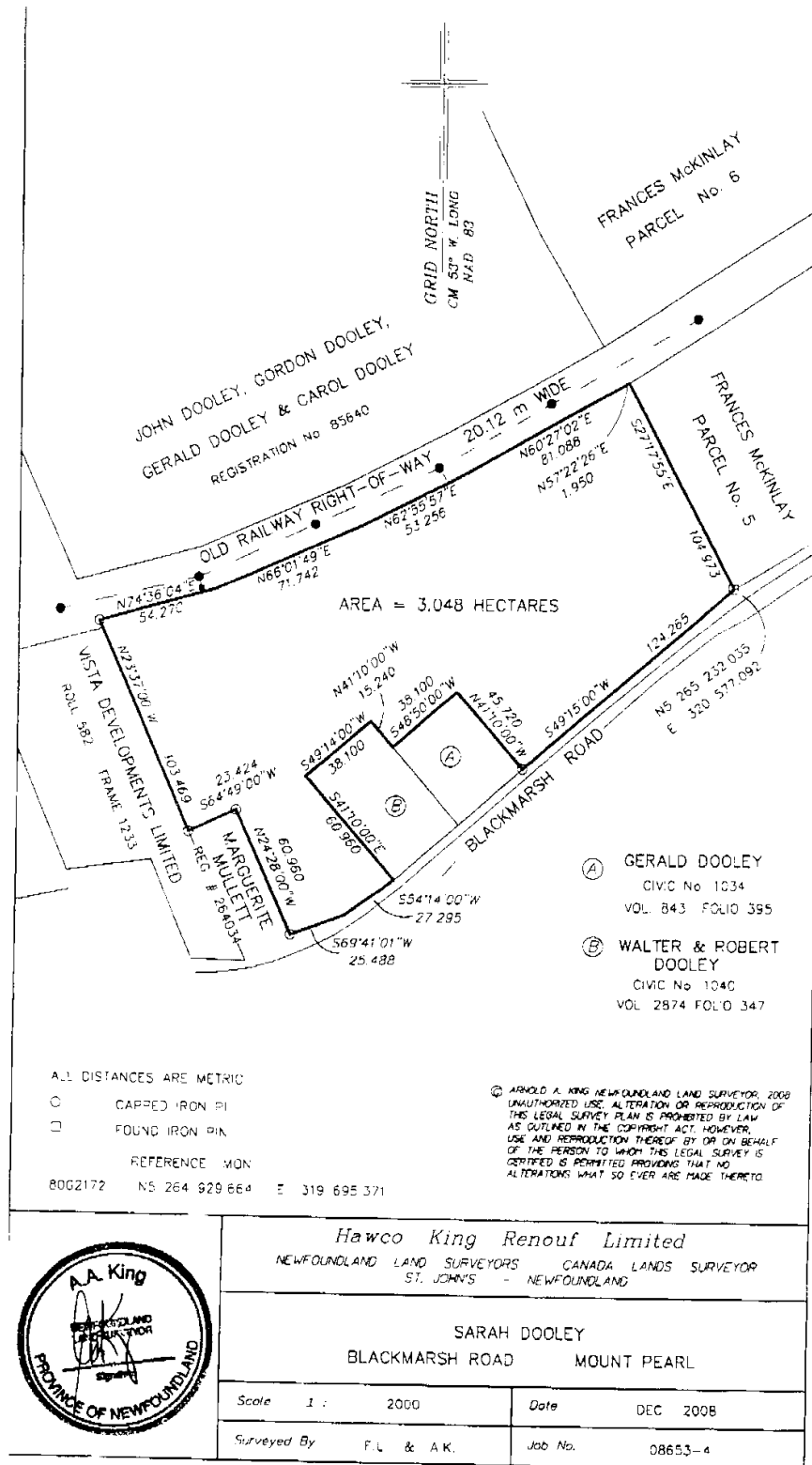
THENCE turning and running along the land of Vista Developments Limited, roll 582 frame 1233, North 23° 37' 00" West, 103.469 metres;

THENCE turning and running along an Old Railway Right-of Way, 20.12 metres wide, North 74° 36' 04" East, 54.270 metres; thence North 66° 01' 49" East, 71.742 metres; thence North 62° 55' 57" East, 53.256 metres; thence North 60° 27' 02" East, 81.088 metres; thence North 57° 22' 26" East, 1.950 metres;

THENCE turning and running along the land of Frances McKinlay, Parcel No.5, South 27° 17' 55" East, 104.973 metres, more or less, to the point of commencement, and

containing an area of 3.048 hectares, as shown on the attached plan, Job No. 08-653-4 dated December 2008.

All bearings are Grid bearings referred- to Grid North. All distances are horizontal ground distances.



Mar 6

2009 01 T 0766
IN THE SUPREME COURT OF
NEWFOUNDLAND AND LABRADOR
TRIAL DIVISION

BENSON MYLES PLC INC.
Solicitors for the Applicant
Attention: Gary F. Peddle

IN THE MATTER OF an Application of ALEXANDER MCKINLAY and KAREN HARVEY, Executors of the Estate of Frances St. Clair McKinlay of the City of St. John's, in the Province of Newfoundland and Labrador

ADDRESS FOR SERVICE:
Suite 900 Atlantic Place, 215 Water Street
P.O. Box 1538
St. John's, NL A1C 5N8
Tel: 709-579-2081
Fax: 709-579-2647

AND

IN THE MATTER OF the *Quieting of Titles Act*, cQ-3, of the RSNL, 1990, and amendments thereto

DESCRIPTION	
December 2008	Job No. 08-653-3
Blackmarsh Road	Parcel No.5 Mount Pearl, NL

AND

IN THE MATTER OF a piece or parcel of land situate and being on Blackmarsh Road in the City of Mount Pearl, in the Province of Newfoundland and Labrador

ALL that piece or parcel of land situate and being on the northwestern side of Blackmarsh Road at Mount Pearl, Newfoundland & Labrador, in the electoral district of Mount Pearl North and being bounded and abutted as follows, that is to say:

Notice of Application under the *Quieting of Titles Act*, cQ-3 of the RSNL 1990 and amendments thereto

NOTICE IS HEREBY GIVEN to all parties that ALEXANDER MCKINLAY and KAREN HARVEY, Executors of the Estate of Frances St. Clair McKinlay have applied to the Supreme Court of Newfoundland and Labrador, Trial Division, to have the title to ALL THAT piece or parcel of land situate and being on Blackmarsh Road, within the jurisdiction of the City of Mount Pearl, in the Province of Newfoundland and Labrador and being more particularly described in the Schedule hereunto attached and marked "A" of which the said ALEXANDER MCKINLAY and KAREN HARVEY, Executors of the Estate of Frances St. Clair McKinlay claims on behalf of the Estate to be the owners investigated and they request a declaration that the said Estate of Frances St. Clair McKinlay is the legal and beneficial owner in possession and the said Court having ordered that Notice of the said Application be published as required by the above named Act.

BEGINNING at a point on the northwestern side of Blackmarsh Road, at Mount Pearl, said point having coordinates of North 5 265 232.035 metres and East 320 577.092 metres in the Modified Three Degree Transverse Mercator Projection for the province of Newfoundland and Labrador, Zone One;

THENCE running along the land of Sarah Dooley, North 270 17' 55" West, 104.973 metres;

THENCE turning and running along an Old Railway Right-of-Way, 20.12 metres wide, North 57° 22' 17" East, 176.524 metres;

THENCE turning and running along the land of John Furness Cowan, Parcel No.3, South 33° 13' 23" East, 109.050 metres;

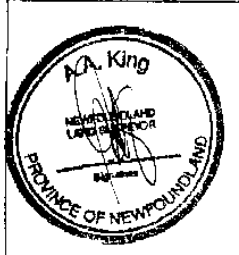
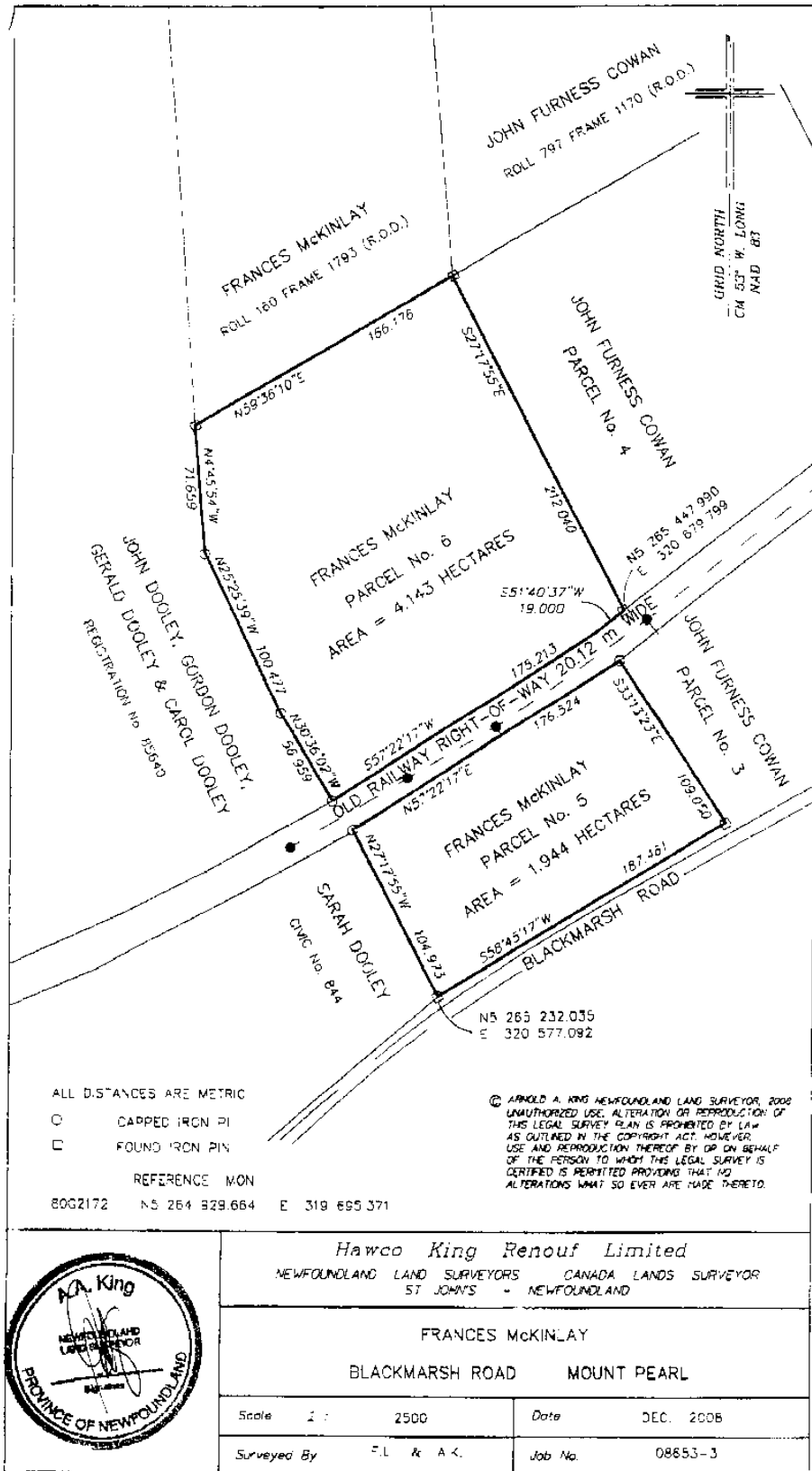
THENCE turning and running along the northwestern side of Blackmarsh Road, South 58° 45' 17" West, 187.461 metres, more or less, to the point of commencement, and containing an area of 1.944 hectares, as shown on the attached plan, Job No. 08-653-3 dated December 2008.

All bearings are Grid bearings referred to Grid North. All distances are horizontal ground distances.

All persons having title adverse to the said title claimed by ALEXANDER MCKINLAY and KAREN HARVEY, Executors of the Estate of Frances St. Clair McKinlay shall file in the Registry of the Supreme Court of Newfoundland and Labrador particulars of such adverse claim and serve the same together with an Affidavit verifying the same on the undersigned Solicitors for the Applicants on or before the 26th day of March, 2009, after which date no party having any claim shall be permitted to file the same or to be heard except by special leave of the Court and subject to such conditions as the Court may deem just.

All such adverse claims shall then be investigated in such manner as the said Supreme Court may direct.

DATED at St. John's, this 19th day of February, 2009.



Hawco King Renouf Limited NEWFOUNDLAND LAND SURVEYORS CANADA LANDS SURVEYOR ST. JOHN'S - NEWFOUNDLAND	
FRANCES MCKINLAY BLACKMARSH ROAD MOUNT PEARL	
Scale 1 : 2500	Date DEC. 2008
Surveyed By F. L. & A. K.	Job No. 08853-3

December 2008 Job No. 08-653-3
 DESCRIPTION
 Parcel No.6
 Blackmarsh Road Mount Pearl, NL

THENCE running along the land of John Dooley, Gordon Dooley, Gerald Dooley & Carol Dooley, Registration No. 85640, North 30° 36' 02" West, 56.959 metres; thence North 25° 25' 39" West, 100.477 metres; thence North 4° 45' 54" West, 71.659 metres;

ALL that piece or parcel of land situate and being northwest of Blackmarsh Road at Mount Pearl, Newfoundland & Labrador, in the electoral district of Mount Pearl North and being bounded and abutted as follows, that is to say:

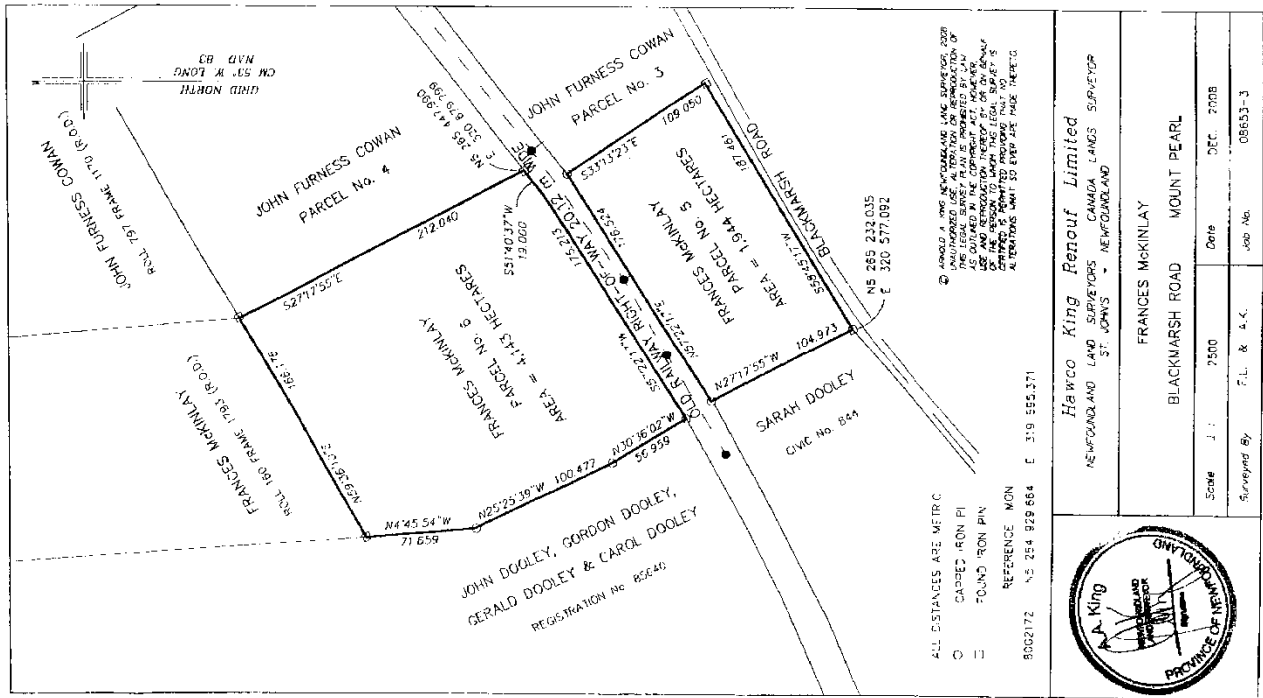
THENCE turning and running along the land of Frances McKinlay, ro11 160 frame 1793, North 59° 36' 10" East, 166.176 metres;

BEGINNING at a point northwest of Blackmarsh Road at Mount Pearl, said point having coordinates of North 5 265 447.990 metres and East 320 679.799 metres in the Modified Three Degree Transverse Mercator Projection for the province of Newfoundland and Labrador, Zone One;

THENCE turning and running along the land of John Furness Cowan, Parcel No.4, South 27° 17' 55" East, 212.040 metres, more or less to the point of commencement, and containing an area of 4.143 hectares, as shown on the attached plan, Job No. 08-653-3 dated December 2008.

THENCE running along an Old Railway Right-of-Way, 20.12 metres wide, South 51° 40' 37" West; 19.000 metres; thence South 57° 22' 17" West, 175.213 metres;

All bearings are Grid bearings referred to Grid North. All distances are horizontal ground distances.



2009 01 T 0764
IN THE SUPREME COURT OF
NEWFOUNDLAND AND LABRADOR
TRIAL DIVISION

BENSON MYLES PLC INC.
Solicitors for the Applicant
PER: Gary F. Peddle

IN THE MATTER OF an Application of AUDREY DOOLEY Executrix of the Estate of John Furness Cowan of the City of Mount Pearl, in the Province of Newfoundland and Labrador

AND

IN THE MATTER OF the *Quieting of Titles Act*, cQ-3, of the RSNL 1990, and amendments thereto

AND

IN THE MATTER OF a piece or parcel of land situate and being on Blackmarsh Road in the City of Mount Pearl, in the Province of Newfoundland and Labrador

Notice of Application under the *Quieting of Titles Act*, cQ-3 of the RSNL 1990 and amendments thereto

NOTICE IS HEREBY GIVEN to all parties that AUDREY DOOLEY as the Executrix of the Estate of John Furness Cowan has applied to the Supreme Court of Newfoundland and Labrador, Trial Division, to have the title to ALL THAT piece or parcel of land situate and being on Blackmarsh Road, within the jurisdiction of the City of Mount Pearl, in the Province of Newfoundland and Labrador and being more particularly described in the Schedule hereunto attached and marked "A" of which the said AUDREY DOOLEY as Executrix of the Estate of John Furness Cowan claims on behalf of the Estate of John Furness Cowan to be the owner investigated and they request a declaration that the said Estate of John Furness Cowan is the legal and beneficial owner in possession and the said Court having ordered that Notice of the said Application be published as required by the above named Act.

All persons having title adverse to the said title claimed by the Estate of John Furness Cowan shall file in the Registry of the Supreme Court of Newfoundland and Labrador particulars of such adverse claim and serve the same together with an Affidavit verifying the same on the undersigned Solicitors for the Applicants on or before the 26th day of March, 2009, after which date no party having any claim shall be permitted to file the same or to be heard except by special leave of the Court and subject to such conditions as the Court may deem just.

All such adverse claims shall then be investigated in such manner as the said Supreme Court may direct.

DATED at St. John's, this 19th day of February, 2009.

ADDRESS FOR SERVICE:

Suite 900 Atlantic Place
215 Water Street, P.O. Box 1538
St. John's, NL A1C 5N8
Tel: 709-579-2081
Fax: 709: 579-2647

Mar 6

December 2008	SCHEDULE A	Job No. 08-653-2
	DESCRIPTION	
	Parcel No.3	
Blackmarsh Road		Mount Pearl, NL

ALL that piece or parcel of land situate and being on the northwestern side of Blackmarsh Road at Mount Pearl, Newfoundland & Labrador, in the electoral district of Mount Pearl North and being bounded and abutted as follows, that is to say:

BEGINNING at a point on the northwestern side of Blackmarsh Road at Mount Pearl, said point having coordinates of North 5 265 407.398 metres and East 320 874.150 metres in the Modified Three Degree Transverse Mercator Projection for the province of Newfoundland and Labrador, Zone One;

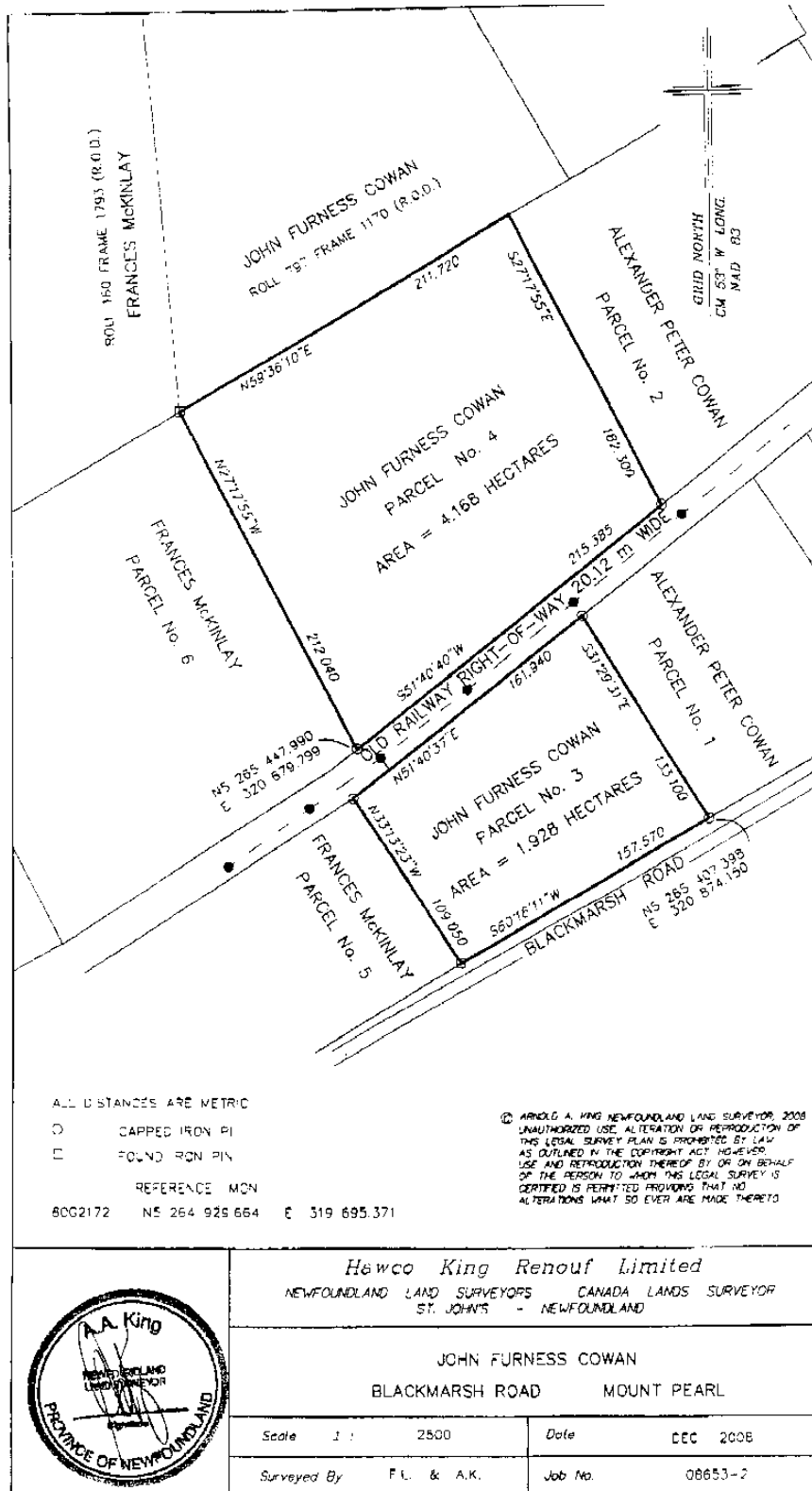
THENCE running along the northwestern side of Blackmarsh Road, South 60° 16' 11" West, 157.570 metres;

THENCE turning and running along the land of Frances McKinlay, Parcel No.5, North 33° 13' 23" West, 109.050 metres;

THENCE turning and running along an Old Railway Right-of-Way, 20.12 metres wide, North 51° 40' 37" East, 161.940 metres;

THENCE turning and running along the land of Alexander Peter Cowan, Parcel No.1, South 31° 29' 31" East, 133.100 metres, more or less, to the point of commencement; and containing an area of 1.928 hectares, as shown on the attached plan, Job No. 08-653-2 dated December 2008.

All bearings are Grid bearings referred to Grid North. All distances are horizontal ground distances.



DESCRIPTION
 Parcel No.4
 Blackmarsh Road
 Mount Pearl, NL

ALL that piece or parcel of land situate and being northwest of Blackmarsh Road at Mount Pearl, Newfoundland & Labrador. in the electoral district of Mount Pearl North and being bounded and abutted as follows, that is to say:

BEGINNING at a point northwest of Blackmarsh Road, at Mount Pearl, said point having coordinates of North 5 265 447.990 metres and East 320 679.799 metres in the Modified Three Degree Transverse Mercator Projection for the province of Newfoundland and Labrador, Zone One;

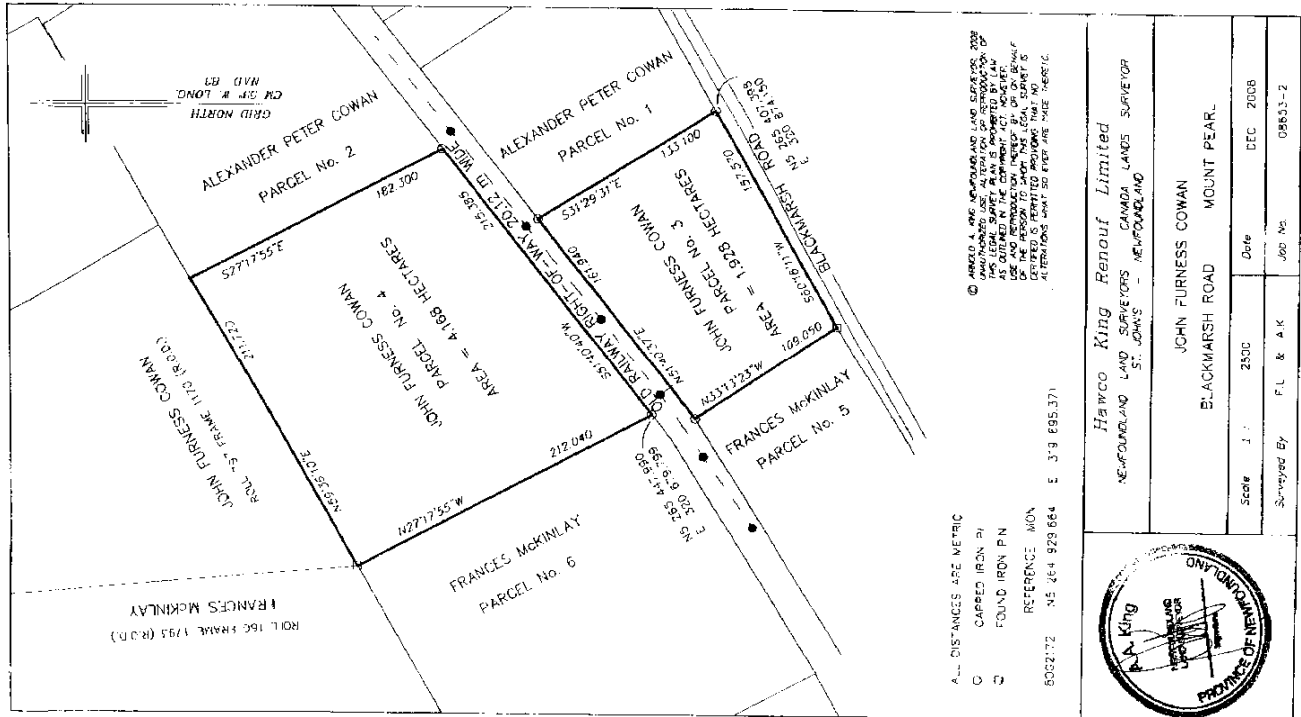
THENCE running along the land of Frances McKinlay, Parcel No.6, North 27° 17' 55" West, 212.040 metres;

THENCE turning and running along the land of John Furness Cowan, roll 797 frame 1170, North 59° 36' 10" East, 211.720 metres;

THENCE turning and running along the land of Alexander Peter Cowan, Parcel No.2. South 27° 17' 55" East, 182.300 metres;

THENCE turning and running along an Old Railway Right-of-Way, 20.12 metres wide, South 51° 40' 40" West, 215.385 metres, more or less. to the point of commencement, and containing an area of 4.168 hectares, as shown on the attached plan. Job No. 08-653-2 dated December 2008.

All bearings are Grid bearings referred to Grid North. All distances are horizontal ground distances.



2009 01 T 0772
IN THE SUPREME COURT OF
NEWFOUNDLAND AND LABRDOR
TRIAL DIVISION

IN THE MATTER OF an Application of GERALD DOOLEY and CAROL DOOLEY of the City of St. John's, in the Province of Newfoundland and Labrador

AND

IN THE MATTER OF the *Quieting of Titles Act*, cQ-3, of the RSNL, 1990, and amendments thereto

AND

IN THE MATTER OF a piece or parcel of land situate and being on Blackmarsh Road in the City of Mount Pearl, in the Province of Newfoundland and Labrador

Notice of Application under the *Quieting of Titles Act*, cQ-3 of the RSNL 1990 and amendments thereto

NOTICE IS HEREBY GIVEN to all parties that Gerald Dooley and Carol Dooley have applied to the Supreme Court of Newfoundland and Labrador, Trial Division, to have the title to ALL THAT piece or parcel of land situate and being on Blackmarsh Road, and bearing Civic Number 1034, within the jurisdiction of the City of Mount Pearl, in the Province of Newfoundland and Labrador and being more particularly described in the Schedule hereunto attached and marked "A" of which the said Gerald Dooley and Carol Dooley claim on their behalf to be the owners investigated and they request a declaration that the said Gerald Dooley and Carol Dooley are the legal and beneficial owners in possession and the said Court having ordered that Notice of the said Application be published as required by the above named Act.

All persons having title adverse to the said title claimed by Gerald Dooley and Carol Dooley shall file in the Registry of the Supreme Court of Newfoundland and Labrador particulars of such adverse claim and serve the same together with an Affidavit verifying the same on the undersigned Solicitors for the Applicants on or before the 26th day of March, 2009, after which date no party having any claim shall be permitted to file the same or to be heard except by special leave of the Court and subject to such conditions as the Court may deem just.

All such adverse claims shall then be investigated in such manner as the said Supreme Court may direct.

DATED at St. John's, this 19th day of February, 2009.

BENSON MYLES PLC INC.
Solicitors for the Applicant
PER: Gary F. Peddle

ADDRESS FOR SERVICE
Suite 900 Atlantic Place,
215 Water Street, P.O. Box 1538
St. John's, NL, A1C 5N8
Tel: 709-579-2081
Fax: 709: 579-2647

SCHEDULE A

December 2008 Job No. 08-653-5

DESCRIPTION

Civic No. 1034 Blackmarsh Road St. John's, NL

ALL that piece or parcel of land situate and being on the northwestern side of Blackmarsh Road at Mount Pearl, Newfoundland & Labrador, in the electoral district of Mount Pearl North and being bounded and abutted as follows, that is to say:

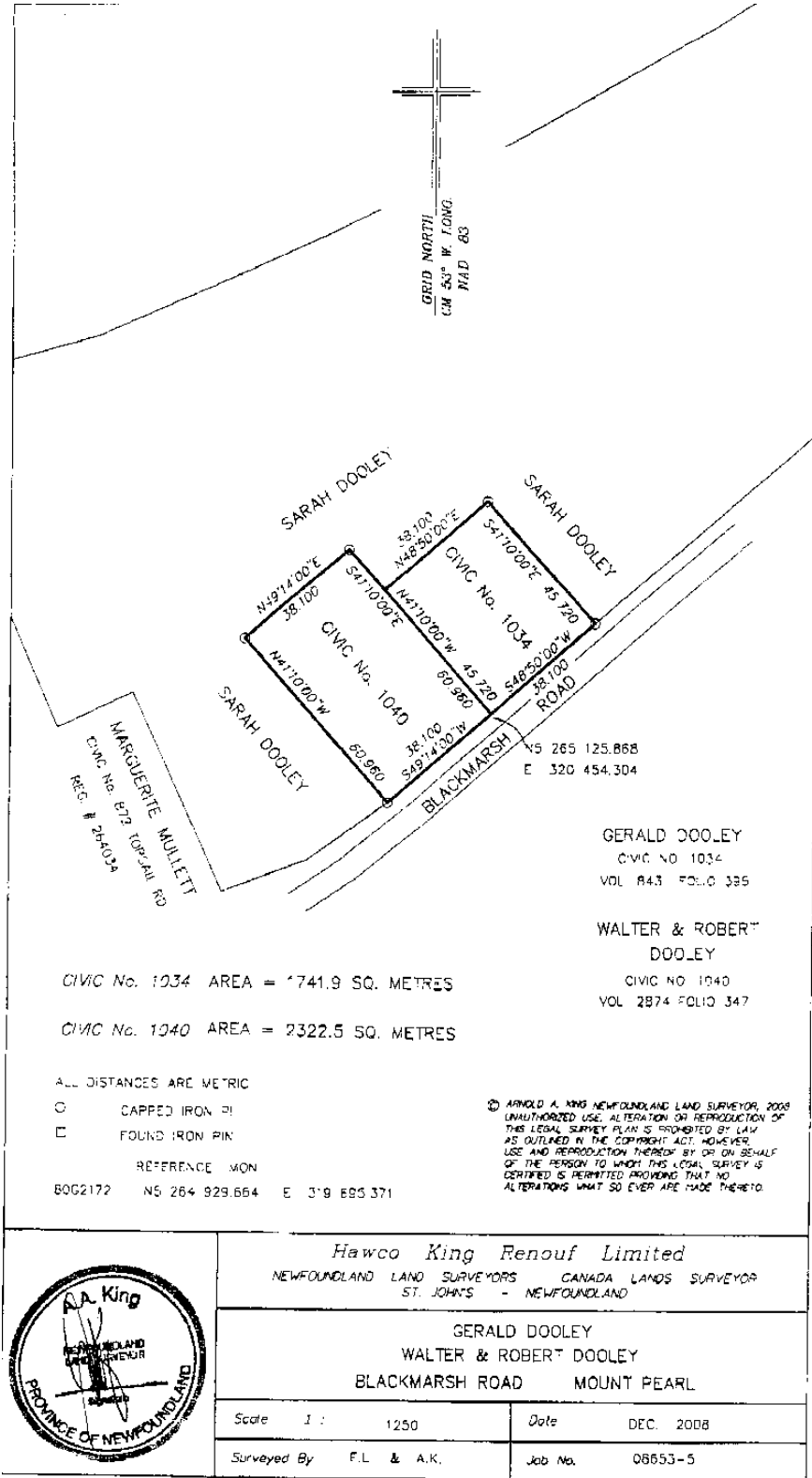
BEGINNING at a point on the northwestern side of Blackmarsh Road, at Mount Pearl, said point having coordinates of North 5 265 125.868 metres and East 320 454.304 metres in the Modified Three Degree Transverse Mercator Projection for the province of Newfoundland and Labrador, Zone One;

THENCE running along the land of Walter & Robert Dooley, Civic No. 1040 Blackmarsh Road, volume 2874 folio 347, North 41° 10' 00" West, 45.720 metres;

THENCE running along the land of Sarah Dooley, North 48° 50' 00" East, 38.100 metres; thence South 41° 10' 00" East, 45.720 metres;

THENCE turning and running along the northwestern side of Blackmarsh Road, South 48° 50' 00" West, 38.100 metres, more or less, to the point of commencement, and containing an area of 1,741.9 square metres, as shown on the attached plan, Job No. 08-653-5 dated December 2008.

All bearings are Grid bearings referred to Grid North. All distances are horizontal ground distances.



	Hawco King Renouf Limited NEWFOUNDLAND LAND SURVEYORS CANADA LANDS SURVEYOR ST. JOHN'S - NEWFOUNDLAND	
	GERALD DOOLEY WALTER & ROBERT DOOLEY BLACKMARSH ROAD MOUNT PEARL	
	Scale 1 : 1250	Date DEC. 2008
	Surveyed By F.L. & A.K.	Job No. 08653-5

2009 01 T 0768
IN THE SUPREME COURT OF
NEWFOUNDLAND AND LABRDOR
TRIAL DIVISION

BENSON MYLES PLC INC.
Solicitors for the Applicant
PER: Gary F. Peddle

IN THE MATTER OF an Application of ROBERT DOOLEY, WALTER DOOLEY, AND LINDA DOOLEY of the City of St. John's, in the Province of Newfoundland and Labrador

AND

IN THE MATTER OF the *Quieting of Titles Act*, cQ-3, of the RSNL, 1990, and amendments thereto

AND

IN THE MATTER OF a piece or parcel of land situate and being on Blackmarsh Road in the City of Mount Pearl, in the Province of Newfoundland and Labrador

Notice of Application under the *Quieting of Titles Act*, cQ-3 of the RSNL 1990 and amendments thereto

NOTICE IS HEREBY GIVEN to all parties that Robert Dooley, Walter Dooley, and Linda Dooley have applied to the Supreme Court of Newfoundland and Labrador, Trial Division, to have the title to ALL THAT piece or parcel of land situate and being on Blackmarsh Road, and bearing Civic Number 1034, within the jurisdiction of the City of Mount Pearl, in the Province of Newfoundland and Labrador and being more particularly described in the Schedule hereunto attached and marked "A" of which the said ROBERT DOOLEY, WALTER DOOLEY AND LINDA DOOLEY claim on their behalf to be the owners investigated and they request a declaration that the said ROBERT DOOLEY, WALTER DOOLEY AND LINDA DOOLEY are the legal and beneficial owners in possession and the said Court having ordered that Notice of the said Application be published as required by the above named Act.

All persons having title adverse to the said title claimed by ROBERT DOOLEY, WALTER DOOLEY AND LINDA DOOLEY shall file in the Registry of the Supreme Court of Newfoundland and Labrador particulars of such adverse claim and serve the same together with an Affidavit verifying the same on the undersigned Solicitors for the Applicants on or before the 26th day of March, 2009, after which date no party having any claim shall be permitted to file the same or to be heard except by special leave of the Court and subject to such conditions as the Court may deem just.

All such adverse claims shall then be investigated in such manner as the said Supreme Court may direct.

DATED at St. John's, this 19th day of February, 2009.

ADDRESS FOR SERVICE:

Suite 900 Atlantic Place
215 Water Street
P.O. Box 1538
St. John's, NL, A1C 5N8
Tel.: 709-579-2081
Fax: 709-579-2647

SCHEDULE A

December 2008	Description	Job No. 08-653-5
	Civic No. 1040 Blackmarsh Road	St. John's, NL

ALL that piece or parcel of land situate and being on the northwestern side of Blackmarsh Road at Mount Pearl, Newfoundland & Labrador, in the electoral district of Mount Pearl North and being bounded and abutted as follows, that is to say:

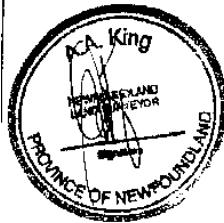
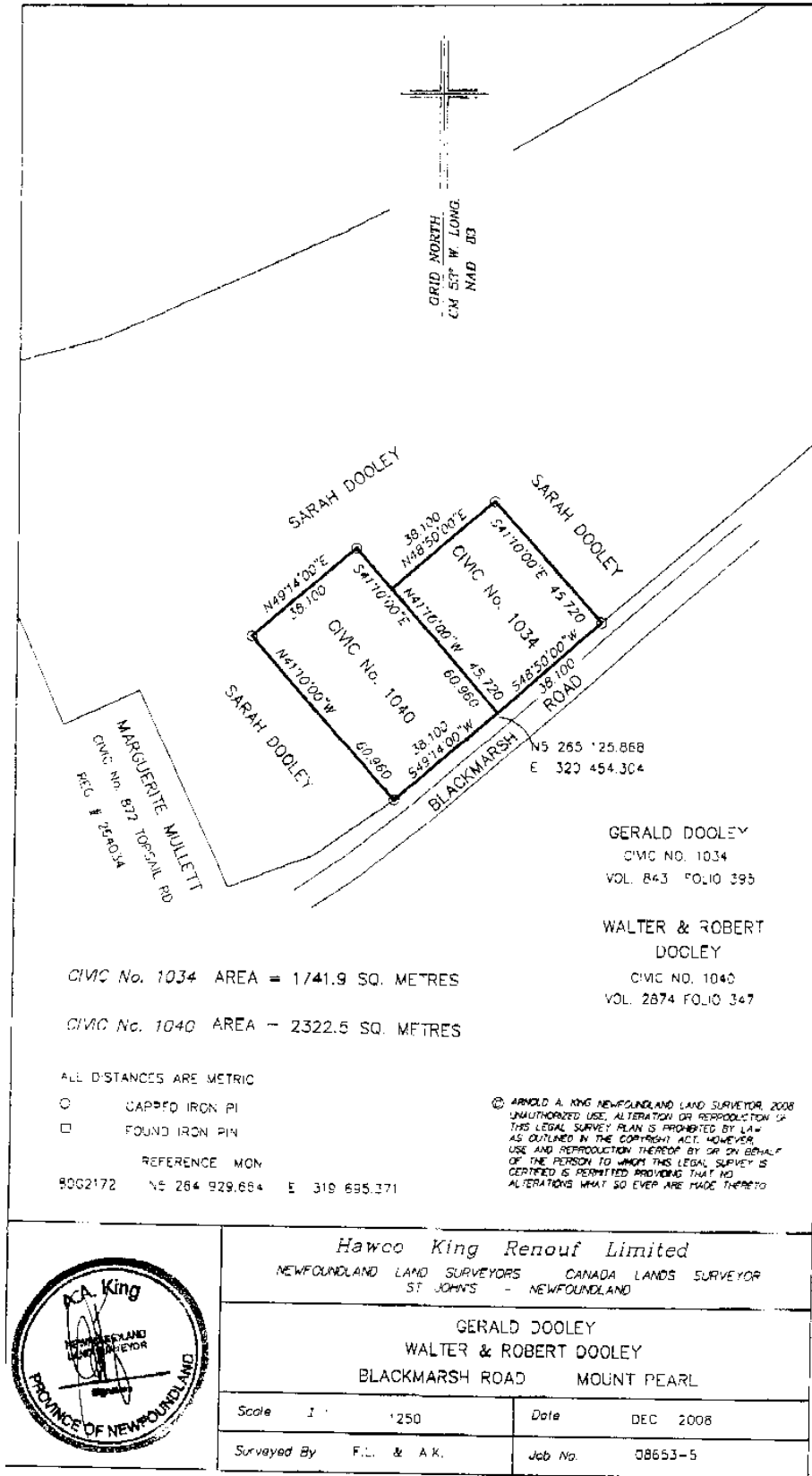
BEGINNING at a point on the northwestern side of Blackmarsh Road, at Mount Pearl, said point having coordinates of North 5 265 125.868 metres and East 320 454.304 metres in the Modified Three Degree Transverse Mercator Projection for the province of Newfoundland and Labrador Zone One;

THENCE running along the northwestern side of Blackmarsh Road, South 49° 14' 00" West, 38.100 metres;

THENCE turning and running along the land of Sarah Dooley, North 41° 10' 00" West, 60.960 metres; thence North 49° 14' 00" East, 38.100 metres;

THENCE turning and running along the land of Sarah Dooley and along the land of Gerald Dooley, Civic No. 1034 Blackmarsh Road, volume 843 folio 395, South 41° 10' 00" East, 60.960 metres, more or less, to the point of commencement, and containing an area of 2,322.5 square metres, as shown on the attached plan, Job No. 08-653-5 dated December 2008.

All bearings are Grid bearings referred to Grid North. All distances are horizontal ground distances.



Hawco King Renouf Limited NEWFOUNDLAND LAND SURVEYORS CANADA LANDS SURVEYOR ST. JOHN'S - NEWFOUNDLAND	
GERALD DOOLEY WALTER & ROBERT DOOLEY BLACKMARSH ROAD MOUNT PEARL	
Scale	1" = 1250'
Date	DEC 2008
Surveyed By	F.L. & A.K.
Job No.	08653-5

TRUSTEE ACT

ESTATE NOTICE

IN THE MATTER OF the Estate and Private Effects of late MELINA SAMSON of the Town of Gander, in the Province of Newfoundland and Labrador, Retired Homemaker, Deceased.

All persons claiming to be creditors of or who have any claims or demands upon or affecting the Estate of MELINA SAMSON, the aforesaid deceased, who died at the Town of Gander, in the Province of Newfoundland and Labrador on or about the 17th day of November, 1993, are hereby requested to send particulars thereof in writing, duly attested, to the undersigned Solicitor for the Executrix of the Estate on or before the 9th day of March, 2009 after which date the Executrix will proceed to distribute the said Estate having regard only to the claims of which she shall then have had notice.

DATED at the Town of Gander, Newfoundland and Labrador, this 18th day of February, 2009.

BONNELL LAW
Solicitor for the Executrix
PER: R. Archibald Bonnell

ADDRESS FOR SERVICE:

P.O. Box 563
218 Airport Boulevard
Gander, NL A1V 2E1
Tel: (709) 651-4949
Fax: (709) 651-4951

Feb 27 & Mar 6

ESTATE NOTICE

In the Matter of the Estate of BARBARA DUNFORD MANUEL, late of Lewisporte, in the Province of Newfoundland and Labrador, Deceased,

All persons claiming to be creditors of or who have any claims or demands either as beneficiaries or next of kin (by blood, legal adoption or marriage) upon or affecting the Estate of BARBARA DUNFORD MANUEL, Gentlewoman, who died at Botwood, NL on or about September 26, 2008, are hereby requested to send particulars thereof in writing, duly attested, to the Registrar Supreme Court, Viking Building, 136 Crosbie Road, Suite 401, St. John's, NL, A1B 3K3, Administrator of the Estate of BARBARA DUNFORD MANUEL on or before April 3, 2009, after which date the said Administrator will proceed to distribute the Estate having regard only to the claims of which he then shall have had notice.

DATED at St. John's, this 27th day of February, 2009

REGISTRAR OF THE SUPREME COURT,
Administrator of the Estate
of Barbara Dunford Manuel
PER: Karen Lawlor, Estates Office

ADDRESS FOR SERVICE:

Viking Building
136 Crosbie Road, Suite 401
St. John's, NL, A1B 3K3
Tel: 709-729-1025
Fax: 709-729-3063

Mar 6



THE NEWFOUNDLAND AND LABRADOR GAZETTE

PART II

SUBORDINATE LEGISLATION FILED UNDER THE STATUTES AND SUBORDINATE LEGISLATION ACT

Vol. 84

ST. JOHN'S, FRIDAY, MARCH 6, 2009

No. 10

NEWFOUNDLAND AND LABRADOR REGULATIONS

NLR 10/09
NLR 11/09



**NEWFOUNDLAND AND LABRADOR
REGULATION 10/09**

Copper-in-Concentrate Exemption Order, 2009
under the
Mineral Act
(O.C. 2009-052)

(Filed February 28, 2009)

Under the authority of section 31.1 of the *Mineral Act*, the Lieutenant-Governor in Council makes the following Order.

Dated at St. John's, February 28, 2009.

Sandra M. Barnes
Deputy Clerk of the Executive Council

ORDER

Analysis

- | | |
|-------------------|-----------------------------|
| 1. Short title | 4. Suspension of exemption |
| 2. Interpretation | 5. Order continues in force |
| 3. Exemption | 6. NLR 64/02 Rep. |

Short title **1.** This Order may be cited as the *Copper-in-Concentrate Exemption Order, 2009*.

Interpretation **2.** (1) In this order

(a) "Act" means the *Mineral Act*; and

(b) "development agreement" means the Development Agreement made as of September 30, 2002 among Her Majesty the Queen in Right of Newfoundland and Labrador, Voisey's Bay Nickel Company Limited and Inco Limited and includes the amendments to the agreement entered into on February 28, 2009 by Her Majesty in Right of Newfoundland and Labrador, Vale Inco Newfoundland and Labrador Limited and Vale Inco Limited.

(2) In interpreting this Order, the terms "copper-in-concentrate", "project" and "proponent" have the meanings given to them in the development agreement.

Exemption

3. The proponent shall be exempt from the provisions of the Voisey's Bay Nickel Company Limited Primary Production Order with respect to all copper-in-concentrate for the life of the project.

Suspension of exemption

4. (1) Notwithstanding section 3, the right of the proponent to ship copper-in-concentrate from the province shall be suspended where a term of the development agreement provides for the suspension for a failure of the proponent to fulfil an obligation under the development agreement, or for another reason provided for in the development agreement, and a notice, where one is required in the circumstances, has been given by the government to the proponent.

(2) Where the failure of the proponent, or the other reason, giving rise to the suspension of the proponent's right to ship copper-in-concentrate from the province under this Order has been remedied as provided for under the development agreement, the proponent may resume the shipments.

Order continues in force

5. Notwithstanding section 3, this Order shall continue in force until it is rescinded or repealed

(a) as contemplated in section 4.14.3 of the development agreement; or

(b) under subsection 31.1(3) of the Act.

NLR 64/02 Rep.

6. The Voisey's Bay Nickel Company Limited Copper Concentrate Exemption Order, Newfoundland and Labrador Regulation 64/02, is repealed.

©Earl G. Tucker, Queen's Printer



**NEWFOUNDLAND AND LABRADOR
REGULATION 11/09**

Nickel-in-Concentrate Exemption Order, 2009
under the
Mineral Act
(O.C. 2009-051)

(Filed February 28, 2009)

Under the authority of section 31.1 of the *Mineral Act*, the Lieutenant-Governor in Council makes the following Order.

Dated at St. John's, February 28, 2009.

Sandra M. Barnes
Deputy Clerk of the Executive Council

ORDER

Analysis

- | | |
|-------------------------------|----------------------------------|
| 1. Short title | 5. Suspension of shipping rights |
| 2. Interpretation | 6. Suspension of exemption |
| 3. Production order exemption | 7. NLR 66/02 Rep. |
| 4. Termination of exemption | |

Short title

1. This Order may be cited as the *Nickel-in-Concentrate Exemption Order, 2009*.

Interpretation

2. (1) In this Order

(a) "Act" means the *Mineral Act*;

(b) "development agreement" means the Development Agreement made as of September 30, 2002 among Her Majesty the Queen in Right of Newfoundland and Labrador, Voisey's Bay Nickel Company Limited and Inco Limited and includes the amendments to the agreement entered into on February 28, 2009 by Her Majesty in Right of Newfoundland and Labrador, Vale Inco Newfoundland and Labrador Limited and Vale Inco Limited; and

(c) "production order" means the Voisey's Bay Nickel Company Limited Primary Production Order.

(2) In interpreting this Order, the terms, "construction completion date", "government", "implementation plan", "nickel-in-concentrate", "processing plant" and "proponent" have the meanings given to them in the development agreement.

Production order exemption

3. (1) Notwithstanding the production order, the proponent, prior to the earlier of the construction completion date of the processing plant and February 28, 2013, may ship a maximum of 440,000 tonnes of nickel-in-concentrate from the province.

(2) The amount of nickel-in-concentrate the proponent may ship from the province under subsection (1) includes the amount shipped by the proponent before February 28, 2009 under the Voisey's Bay Nickel Company Limited Nickel Concentrate Exemption Order.

(3) In the period beginning on January 1, 2009 and ending on December 31, 2009, the proponent shall not ship from the province an amount of nickel-in-concentrate that exceeds 55,000 tonnes.

(4) In the period beginning on January 1, 2010 and ending on the earlier of the construction completion date of the processing plant and February 28, 2013, the proponent shall not ship from the province an amount of nickel-in-concentrate that exceeds, on average over the period, 55,000 tonnes in a calendar year.

Termination of exemption

4. The exemption contained in section 3 shall terminate on the earliest of the

(a) date on which the shipments of nickel concentrate by the lessee have reached a total of 440,000 tonnes of nickel-in-concentrate;

(b) construction completion date; and

(c) date on which it is rescinded under section 31.1(3) of the Act.

Suspension of shipping rights

5. Notwithstanding section 3, where the proponent is not proceeding diligently to complete the engineering and construction of the processing plant as required by section 4.7.4 or 4.7.5 of the development agreement, the right of the proponent to ship nickel-in-concentrate out of the province under section 3 shall be suspended, subject to sections 5.3 and 6.5.2 of the development agreement.

Suspension of exemption

6. (1) Notwithstanding section 3, the right of the proponent to ship nickel-in-concentrate from the province shall be suspended where a term of the development agreement provides for the suspension for a failure of the proponent to fulfil an obligation under the development agreement, or for another reason provided for in the development agreement, and a notice, where one is required in the circumstances, has been given by the government to the proponent.

(2) Where the failure of the proponent, or the other reason, giving rise to the suspension of the proponent's right to ship nickel-in-concentrate from the province under this Order has been remedied as provided for under the development agreement, the proponent may resume the shipments.

NLR 66/02 Rep.

7. The Voisey's Bay Nickel Company Limited Nickel Concentrate Exemption Order, Newfoundland and Labrador Regulation 66/02, is repealed.

©Earl G. Tucker, Queen's Printer

Index

PART I

Change of Name Act – Applications	103
Corporations Act– Notices.....	93
Land Act– Notices	104
Mineral Act– Notice	98
Quieting of Titles Act– Notices	105
Trustee Act – Notices	126
Urban and Rural Planning Act– Notices.....	102

PART II

CONTINUING INDEX OF SUBORDINATE LEGISLATION

Title of Act and Subordinate Legislation made thereunder	CNLR or NL Reg.	Amendment	NL Gazette Date & Page No.
Mineral Act			
Copper-in-Concentrate Exemption Order, 2009	NLR 10/09	R&S NLR 64/02 Extraordinary Gazette February 28, 2009	Mar. 6/09 p. 57
Nickel-in-Concentrate Exemption Order, 2009	NLR 11/09	R&S NLR 66/02 Extraordinary Gazette February 28, 2009	Mar 6/09 p. 61

The Newfoundland and Labrador Gazette is published from the office of Earl G. Tucker, Queen's Printer.

Copy for publication must be received before **Friday, 4:30 p.m.**, seven days before publication, to ensure inclusion in next issue.

Advertisements should be typewritten or printed legibly, separate from covering letter. Number of insertions required must be stated and the names of all signing officers typewritten or printed.

Copy may be mailed to the address below, faxed to (709) 729-1900 or emailed to queensprinter@gov.nl.ca.

Advertising rates are available upon request. Subscription rate for *The Newfoundland and Labrador Gazette* is \$125.00 for 52 weeks plus applicable tax (\$131.25). Weekly issues of \$3.00 per copy, plus tax payable in advance.

All cheques, money orders, etc., should be made payable to THE NEWFOUNDLAND EXCHEQUER ACCOUNT and all correspondence should be addressed to: Office of the Queen's Printer, P. O. Box 8700, Ground Floor, East Block, Confederation Building, St. John's, NL A1B 4J6. Telephone (709) 729-3649. Fax: (709) 729-1900.

Web Site: <http://www.gs.gov.nl.ca/gs/oqp>

**Place your order by contacting:
Office of The Queen's Printer
Confederation Building, East Block
St. John's, NL A1B 4J6
Telephone: (709) 729-3649 Fax: (709) 729-1900
email: queensprinter@gov.nl.ca**

**Government Information Product
Publication Rate Mail
G.S.T. # R107442683**

All requests for Subscription and Legislation MUST be prepaid.