



THE NEWFOUNDLAND AND LABRADOR GAZETTE

PART I

PUBLISHED BY AUTHORITY

Vol. 84 ST. JOHN'S, FRIDAY, JULY 17, 2009 No. 29

CORPORATIONS ACT		2009-05-05	60132	FASHION 4WARD INC.	
		2009-05-05	60131	FILLMORE'S FINE DINING & ENTERTAINMENT LOUNGE LTD.	
	<i>Corporations Act - Section 393</i>				
	Local Incorporations				
	For the Month of May 2009	2009-05-05	60133	ORAM'S ELECTRICAL LTD.	
Date	Number	Company Name			
2009-05-01	60113	ANDY MILLER CONSULTING LIMITED	2009-05-06	60137	DR. MICHAEL KENNEDY PROFESSIONAL MEDICAL CORPORATION
2009-05-01	60110	CAMPBELLTON VOL. FIRE DEPT. INC.	2009-05-06	60136	EXPLOSIVE MEDIA INC.
2009-05-01	60108	CHARLOTTE LODGE LTD.	2009-05-06	60138	NEWLAB HEALTH CARE SERVICES INC.
2009-05-01	60111	CLUETT'S POND TRAILERHOOD ASSOCIATION INC	2009-05-06	60141	SPENCER'S SURVEYS LTD.
2009-05-01	60105	NCD CONSTRUCTION INC.	2009-05-06	60139	TTI SALES & SERVICES INC.
2009-05-01	60115	NEWFOUNDLAND ENERGY SERVICES (2009) LIMITED	2009-05-07	60144	60144 NEWFOUNDLAND & LABRADOR INC.
2009-05-01	60117	SPARK MARKETING INC.	2009-05-07	60146	EVENING OF ELEGANCE DECORATING INC.
2009-05-04	60120	MASSEY HOME IMPROVEMENT LTD	2009-05-07	60149	PARKINSON SOCIETY NEWFOUNDLAND AND LABRADOR INC./SOCIETE
2009-05-04	60123	NUKUM FORESTRY LTD.			PARKINSON TERRE NEUVE & LABRADOR INC.
2009-05-04	60121	ROCHE'S SALES & SERVICES LTD.	2009-05-07	60145	ROY BONNELL DISTRIBUTORS LTD.
2009-05-04	60103	ARGENTIA INDUSTRIAL SAFETY SUPPLIES LTD.	2009-05-07	60147	THE OLDMILL 4-SEASONS R.V. CAMPGROUND & LODGE LIMITED
2009-05-04	60104	Jinghua Seafood Ltd			Q.S.T Services Ltd.
2009-05-04	60119	C & D Perrier Enterprises Ltd.	2009-05-07	60143	BRT Excavations Inc.
2009-05-05	60129	EMBARR STABLES INC.	2009-05-07	60135	
			2009-05-07	60143	

THE NEWFOUNDLAND AND LABRADOR GAZETTE
July 17, 2009

2009-05-08	60151	HANLON'S PROFESSIONAL SERVICES LTD.	2009-05-13	60181	Mwiza Health and Beauty Inc.
2009-05-08	60150	J. PENNEY TRUCKING LTD.	2009-05-13	60182	Central Truss Systems Inc.
2009-05-08	60154	MUSHUAU AGGREGATE LTD.	2009-05-13	60183	60183 NEWFOUNDLAND & LABRADOR LIMITED
2009-05-11	60168	AROUND THE BAY COTTAGE BUILDERS AND RENO LTD.	2009-05-14	60196	FIELDS OF ATHENRY RESORT CORPORATION
2009-05-11	60158	BURTON INVESTMENTS INC.	2009-05-14	60195	HARBOURSIDE DEVELOPMENT CORPORATION
2009-05-11	60162	DRS. SZARVAS AND SRIDHAR PMC INC.	2009-05-14	60194	J. R. SEAFOODS INC.
2009-05-11	60163	EVERYTHING CONCRETE LIMITED	2009-05-14	60193	TABLE MOUNTAIN DEVELOPERS INC.
2009-05-11	60167	GREEN FOOD INDUSTRIES INC.	2009-05-14	60190	Connaigre Contractors Inc.
2009-05-11	60161	ROSHNI HOLDINGS LIMITED	2009-05-14	60191	R S T CONSTRUCTION LTD
2009-05-11	60159	THE RACK 09 INCORPORATED	2009-05-14	60192	COMPLETE CONSTRUCTION 2009 INC.
2009-05-11	60153	C L J CONSTRUCTION LTD	2009-05-15	60199	60199 NEWFOUNDLAND & LABRADOR INC.
2009-05-11	60155	HFV Associates Inc.	2009-05-15	60200	60200 NEWFOUNDLAND & LABRADOR INC.
2009-05-11	60156	Worldwide Properties Limited	2009-05-15	60202	CRATE CONNECT INC.
2009-05-11	60157	Lewisporte Marina Administrative Authority Inc.	2009-05-15	60203	D. MERCER AND SON DISTRIBUTORS LIMITED
2009-05-12	60189	CHES CROSBIE INVESTMENT CORPORATION	2009-05-15	60201	KCR MOVERS INC.
2009-05-12	60173	ELEPHANT 7 INCORPORATED	2009-05-15	60204	NEXT STEP HOLDINGS INC.
2009-05-12	60171	FRESH START ALTERNATIVE MEASURES COMMITTEE INC.	2009-05-15	60198	60198 NEWFOUNDLAND & LABRADOR INC.
2009-05-12	60176	FRIENDS OF TOPSAIL BEACH INCORPORATED	2009-05-19	60215	CAPE RAY LIGHTHOUSE KEEPERS ASSOCIATION INC.
2009-05-12	60174	ICM HOLDINGS INC.	2009-05-19	60213	GET A WASH "BY" LTD.
2009-05-12	60172	LONG HARBOUR SALES & SERVICE LTD.	2009-05-19	60212	SCJ31 ENTERPRISES LIMITED
2009-05-12	60175	NEWFOUNDLAND CHOCOLATE COMPANY INC.	2009-05-19	60205	Northern Lights Seafood Inc.
2009-05-12	60177	THUNDER RODE ENT. LTD.	2009-05-19	60206	Newfoundland Kitchen Party Limited
2009-05-12	60160	60160 NEWFOUNDLAND & LABRADOR LIMITED	2009-05-19	60209	MAC-HVAC Refrigeration LTD
2009-05-12	60165	Out of the Blue Adventures Ltd.	2009-05-19	60210	NSB Personnel Services Inc.
2009-05-12	60166	REC Enterprises Limited	2009-05-19	60211	Corner Brook Running Club Inc.
2009-05-12	60169	Nolan's Construction Ltd	2009-05-20	60220	60220 NEWFOUNDLAND & LABRADOR LTD.
2009-05-12	60170	ROLCON TRUCKING & EXCAVATION LTD	2009-05-20	60218	ATHEN-RY DEVELOPMENT CORPORATION
2009-05-13	60186	CENTRAL LANDSCAPING LIMITED	2009-05-20	60224	BELLO HORIZONTE CONSTRUCTION LTD.
2009-05-13	60184	DR. ROBERTO LINO HERNANDEZ GONZALEZ PROFESSIONAL MEDICAL CORPORATION	2009-05-20	60217	COLOR APPLICATIONS 2009 LIMITED
2009-05-13	60187	EASTERN MACHINING & WELDING INC.	2009-05-20	60223	COOP'S ELECTRICAL LTD.
2009-05-13	60178	60178 NEWFOUNDLAND & LABRADOR CORP	2009-05-20	60222	THE SHORE GROUP & ASSOCIATES INC.
2009-05-13	60179	60179 NEWFOUNDLAND & LABRADOR INC.	2009-05-20	60216	Outside Pond Park Recreational Committee Inc.
2009-05-13	60180	60180 NEWFOUNDLAND & LABRADOR INC.	2009-05-21	60230	DESTINATION GANDER INC.
			2009-05-21	60231	DON'S RESTAURANT LIMITED
			2009-05-21	60234	EUGENE PIERSON DISTRIBUTING INC.
			2009-05-21	60233	TRANSPORT I INC.
			2009-05-21	60225	Cape Chapeau Rouge Adventures Limited
			2009-05-21	60226	60226 NEWFOUNDLAND & LABRADOR LIMITED
			2009-05-21	60227	60227 NEWFOUNDLAND & LABRADOR INC

THE NEWFOUNDLAND AND LABRADOR GAZETTE
July 17, 2009

2009-05-21	60228	Soccer Shrines Inc.	2009-05-29	60284	SOULIS POND
2009-05-22	60239	BAILEY DEVELOPMENT CORPORATION	2009-05-29	60285	CONTRACTING LTD. TIZZARD'S AUTO & DIESEL REPAIR LTD.
2009-05-22	60242	CJS SIDING LTD.	2009-05-29	60282	J & H Transport Inc.
2009-05-22	60241	DOLLY MAID INC.	2009-05-29	60283	Jayrose Carpentry Ltd.
2009-05-22	60240	DONNY MCGRATH DISTRIBUTING INC	Total Incorporations: 144		
2009-05-22	60243	PENNECON ATCON JV GENERAL PARTNER INC.			
2009-05-22	60236	The Other Side Sod Farms Limited	<i>Corporations Act - Section 331</i>		
2009-05-22	60237	J&K Services Inc.	Local Revivals		
2009-05-25	60246	ACRO-ADIX, SCHOOL OF ACROBATICS LTD.	For the Month of May 2009		
2009-05-25	60247	AWC INSPECTION SERVICES INCORPORATED	Date	Number	Company Name
2009-05-25	60245	G & R CONSTRUCTION LIMITED	2009-05-04	48107	11322 Newfoundland Inc.
2009-05-26	60262	ALL SERVICE RENOVATION LIMITED	2009-05-04	33199	P & G Realty Limited
2009-05-26	60255	ARIANNA CONSTRUCTION INC.	2009-05-07	16913	Scott & Company (1983) Limited
2009-05-26	60257	AROUND THE BAY ENTERPRISES INC.	2009-05-13	28334	BUSINESS ASSOCIATION OF NEWFOUNDLAND & LABRADOR INC.
2009-05-26	60263	JOHN W. MCGRATH PROFESSIONAL LAW CORPORATION	2009-05-14	4621	The Lions Club of Grand Falls
2009-05-26	60261	LUCAS BROTHER'S CONSTRUCTION INC.	2009-05-15	7285	Roach's Enterprises Limited
2009-05-26	60256	MARNELL HOLDINGS LIMITED	2009-05-19	6226	Southwest Coast Development Association
2009-05-26	60269	MURRAY'S POND DEVELOPMENT LTD.	2009-05-28	13207	The Middle Gull Pond Association
2009-05-26	60260	RMC BUILDERS INC.	Total Revivals: 8		
2009-05-26	60265	TKM CONSULTANTS LTD.	<i>Corporations Act - Section 296 and 393</i>		
2009-05-26	60264	UPSTREAM MARKETING INC	Local Continuances		
2009-05-26	60249	Abel Innovations Inc.	For the Month of May 2009		
2009-05-26	60250	H.G. TAYLOR CONSULTING LTD.	Date	Number	Company Name
2009-05-27	60271	EAST COAST ROOFING AND RENOVATIONS LTD.	2009-05-21	60235	MELBOURNE MECHANICAL INC.
2009-05-27	60270	STRAIGHT UP CONTRACTING LTD.	Total Continuances: 1		
2009-05-27	60274	WESJER CONSTRUCTION LTD	<i>Corporations Act - Section 286</i>		
2009-05-27	60254	Harbourview Homes Ltd.	Local Amendments		
2009-05-27	60258	Vibration Technology NL Ltd.	For the Month of May 2009		
2009-05-27	60266	60266 NEWFOUNDLAND & LABRADOR INC.	Date	Number	Company Name
2009-05-27	60267	Nutrafoods Development Corp.	2009-05-01	42684	10854 Newfoundland Inc.
2009-05-27	60268	N & J NewWay Construction Ltd	2009-05-01	52361	CABOTO SEAFOODS LIMITED
2009-05-28	60279	CBS RECYCLING LIMITED	2009-05-01	39678	CEDAR RIDGE DEVELOPMENTS LIMITED
2009-05-28	60280	R.S.M. CONSULTING INC	2009-05-01	40287	Norris Arm Heritage Society Inc.
2009-05-28	60281	SOUTH WEST HOLDINGS LTD.	2009-05-01	58914	SESGWE'G SALES & INVESTING INC.
2009-05-28	60275	60275 NEWFOUNDLAND & LABRADOR INC.	2009-05-04	36887	Back In Action Work Rehab Inc.
2009-05-28	60276	CORNER BROOK HARDWARE LIMITED	2009-05-04	41235	BIA Health & Fitness Co. (1999) Ltd.
2009-05-29	60289	NOVAMEDIA DIGITAL INC.	2009-05-04	59834	K & W INVESTMENTS LTD.
2009-05-29	60288	QUALITY HOME CARE SERVICE INC.	2009-05-04	59947	SMITH KIELLY PROFESSIONAL OPTOMETRIC CORPORATION
2009-05-29	60286	RELAX BODY WELLNESS CLINIC INC.	2009-05-05	44726	11023 Newfoundland Limited
			2009-05-05	55407	55407 NEWFOUNDLAND AND LABRADOR INC.
			2009-05-05	7291	FIRDALE DEVELOPMENT COMPANY LIMITED

THE NEWFOUNDLAND AND LABRADOR GAZETTE
July 17, 2009

2009-05-05	47333	Innu Recreation Complexes Inc.	2009-05-27	7770	Star of the Sea Association of the Sacred Heart Parish, Placentia
2009-05-06	35516	10436 NEWFOUNDLAND LIMITED			
2009-05-06	41512	Geoff Murphy Services Limited	2009-05-27	56036	TIDINGS OF GRACE MINISTRIES CORPORATION
2009-05-06	48989	MAG HOLDINGS LTD.			
009-05-06	37350	TEMPLE'S CARPENTRY LTD.	2009-05-28	58723	HARMONY HOLDINGS INC.
2009-05-07	41128	BROWNING HARVEY LIMITED	2009-05-28	49057	P & M Mechanical Limited
			2009-05-29	44399	CRANE-TEC SERVICES INC.
2009-05-07	51901	ELLSWORTH ESTATES INC.	2009-05-29	9113	J. I. Pritchett & Sons Limited
2009-05-08	55244	SKYWAY RENTAL LIMITED	2009-05-29	57996	PETROFORMA INC.
			2009-05-29	60096	SANDY COVE SEAFOOD INC.
2009-05-11	52505	IMPERIAL SEAFOOD LTD.			
2009-05-11	33442	Ivan Burton Enterprises Ltd.	Total Amendments: 65		
2009-05-11	36798	PLACENTIA PIZZA INC.			
2009-05-12	59283	MELKE ENTERPRISES LTD.			
2009-05-12	35728	NALCOR ENERGY - BULL ARM FABRICATION INC.			
2009-05-12	1388	THE BALLY HALY GOLF AND COUNTRY CLUB LIMITED	Date	Number	Company Name
			2009-05-01	57412	ATLANTIC SECURITY LIMITED
2009-05-13	60059	60059 NEWFOUNDLAND & LABRADOR LTD.	2009-05-01	49681	MAHONEY LAMBE INC.
2009-05-13	39609	C.R.D. HOLDINGS LIMITED	2009-05-04	49287	2020 Investments Limited
			2009-05-06	54218	DG & JG HOLDINGS LTD.
2009-05-14	40951	Dell Holdings Limited	2009-05-06	1901	NOCO LIMITED
2009-05-14	60069	DO-IT-RITE, FOAMS FOR HOMES LTD.	2009-05-07	42105	ABBOTT PROPERTIES INC.
			2009-05-07	32261	GENCO ENTERPRISE LTD.
2009-05-14	48364	FRIENDS OF WRITERS AT WOODY POINT INC.	2009-05-07	53100	GLOBAL PERSONNEL SERVICES INCORPORATED
2009-05-14	10234	L' Association Francophone Du Labrador	2009-05-08	50317	EBBTIDE ENTERPRISES LIMITED
2009-05-14	36701	NOTRE DAME COMPASSIONATE CARE INC.	2009-05-12	40413	JASPER HOLDINGS LIMITED
2009-05-15	42544	10837 Newfoundland Ltd.	2009-05-12	14186	LANDSIDE GROCETERIA LIMITED
2009-05-15	57992	57992 NEWFOUNDLAND AND LABRADOR LIMITED	2009-05-13	32246	Centre City Ltd.
			2009-05-13	32229	PARSONS SENIOR CITIZENS RETIREMENT HOME LTD.
2009-05-15	57356	BARRY SCAFFOLDING SERVICES LTD.			
2009-05-15	52392	DC DESIGN HOUSE INC.	2009-05-15	52249	BIG FISH B & B AND CRAFTS INC.
2009-05-15	39652	OCEAN NET. INC.			
2009-05-15	7285	Roach's Enterprises Limited	2009-05-20	58452	58452 NEWFOUNDLAND AND LABRADOR INC.
2009-05-19	60129	EMBARR STABLES INC.			
2009-05-20	55994	ACZEN INNOVATIONS INC.	2009-05-20	47923	TIGER DRIVEWAY SEALING LIMITED
2009-05-20	59551	Blue Stage Entertainment Ltd.			
2009-05-20	55986	FOREYES OPTICAL LTD.	2009-05-21	58574	BOYD CONTRACTORS INC.
2009-05-20	21347	GEOTECH SERVICES INC.	2009-05-22	29723	BARRY DISTRIBUTORS INC.
2009-05-20	7844	Marpatel Limited	2009-05-22	29407	FARMDALE HOME INC.
2009-05-20	14653	NEWFOUNDLAND LAWN AND SOD LIMITED	2009-05-22	26470	Macy's Limited
			2009-05-22	51358	SIMPLE SOLUTIONS INC.
2009-05-20	57123	O'Leary Properties Limited	2009-05-25	24163	Atlantic Nova Limited
2009-05-20	36782	THE NORTHEAST AVALON REGIONAL ECONOMIC DEVELOPMENT BOARD INC.	2009-05-25	40094	BENNETT and WALL INC
			2009-05-25	49763	NO NAME PIZZA LTD.
			2009-05-26	59112	AVALON MARINE SERVICES LTD.
2009-05-21	45592	Oldridge Holdings Ltd.	2009-05-26	58135	BAYSHORE SEAFOODS LTD.
2009-05-22	29825	CMH Construction Ltd.	2009-05-26	43550	Burse's Carpentry & Joinery Ltd.
2009-05-22	44874	Noble Homes Ltd.	2009-05-26	58743	FRITAN AIRCRAFT REPAIRS INC
2009-05-25	53524	LFD Business Consulting Services Inc.	2009-05-26	23145	STEEL DOLPHIN INC.
2009-05-25	60082	TMN DENTXPRESS LTD.	2009-05-29	44479	Exploits Home Centre Limited
2009-05-25	60043	United Builders Contracting Ltd.			
2009-05-26	57958	DFB DRIVER ENERGY INC.			
2009-05-27	55945	55945 NEWFOUNDLAND AND LABRADOR LIMITED	Total Dissolutions: 30		
2009-05-27	39157	SCOMAX ENTERPRISES LIMITED			

THE NEWFOUNDLAND AND LABRADOR GAZETTE
July 17, 2009

<i>Corporations Act - Section 299</i>			57958		DFB DRIVER ENERGY INC.
Local Discontinuances					DFB DRIVER INC.
For the Month of May 2009			2009-05-26	From:	
Date	Number	Company Name			
2009-05-19	52786	NU FEEDS INC.	58723		HARMONY HOLDINGS INC.
2009-05-19	47756	Nu Mink Inc.			HARMONY HEALTH CARE INC.
Total Discontinuances: 2			2009-05-28	From:	
<hr/> <i>Corporations Act - Section 294</i>			60096		SANDY COVE SEAFOOD INC.
Local Amalgamations					60096
For the Month of May 2009			2009-05-29	From:	NEWFOUNDLAND & LABRADOR INC.
Date	Number	Company Name			
2009-05-01	60106	PREMIER CONSTRUCTION LIMITED			
From:	19188	PREMIER CONSTRUCTION LIMITED			
	20327	Terra Nova Industries Ltd.			
2009-05-01	60107	PRIME INVESTMENTS LIMITED			
From:	45286	Concept Ready-Mix Ltd.			
	35030	Prime Investments Ltd.			
2009-05-23	60244	BARRY HOLDINGS LIMITED			
From:	60027	60027 NEWFOUNDLAND AND LABRADOR INC.			
	60028	60028 NEWFOUNDLAND AND LABRADOR INC.			
	39862	BARRY HOLDINGS LIMITED			
Total Amalgamations: 3					
<hr/> <i>Corporations Act - Section 286</i>					
Local Name Changes					
For the Month of May 2009					
Number		Company Name	Date	Number	Company Name
52361		CABOTO SEAFOODS LIMITED	2009-05-01	60114	DELTA FINANCIAL CORPORATION LIMITED
2009-05-01	From:	CABOTO SEAFOODS (2005) LTD.	2009-05-01	60116	FARROW PARTNERSHIP ARCHITECTS INC.
55244		SKYWAY RENTAL LIMITED	2009-05-01	60112	NORTHERN CAPITAL ASSOCIATES HOLDINGS CANADA ULC
2009-05-08	From:	SKYWAY RENTALS LIMITED	2009-05-04	60125	CASTOR DISPATCH SERVICES LTD.
52505		IMPERIAL SEAFOOD LTD.	2009-05-04	60127	COMMERCIAL INSURANCE BROKERS INC.
2009-05-11	From:	ROYAL TRANSFER INTERNATIONAL LTD.	2009-05-04	60126	K & R BUILDERS LTD.
60059		60059 NEWFOUNDLAND & LABRADOR LTD.	2009-05-04	60124	THE MOTORCYCLE RIDE FOR DAD
2009-05-13	From:	Wok Box Nfld. Ltd.	2009-05-04	60122	THE PROSTATE CANCER FIGHT FOUNDATION
57356		BARRY SCAFFOLDING SERVICES LTD.	2009-05-05	60130	FEDEX SMARTPOST, INC.
2009-05-15	From:	G. BARRY SCAFFOLDING LTD.	2009-05-06	60140	1434456 ALBERTA LTD.
52392		DC DESIGN HOUSE INC.	2009-05-06	60134	OODALL RUBBER COMPANY OF CANADA ULC
2009-05-15	From:	ATHENA WAY INC.	2009-05-07	60148	H. B. WHITE CANADA CORP.
60082		TMN DENTXPRESS LTD.	2009-05-13	60188	4456084 CANADA INC.
2009-05-25	From:	T.M.N. DENT EXPRESS LIMITED	2009-05-13	60185	EAUX VIVES WATER INC.
			2009-05-14	60197	SUPERIOR STAFF RESOURCES, CORP.
			2009-05-15	60207	DAY 21 STUDIOS INC.
			2009-05-15	60208	PATHWAY OIL & GAS 2009 INC.
			2009-05-19	60214	JUST ENERGY CORP.
			2009-05-20	60219	HERCULES SLR INC.
			2009-05-20	60221	MEPCO FINANCE CORPORATION
			2009-05-21	60229	6138454 CANADA INC.
			2009-05-22	60238	7166800 CANADA INC.
			2009-05-25	60248	ALAMO RENTAL (CN) INC.
			2009-05-25	60253	ALSTOM HYDRO CANADA INC.
			2009-05-25	60251	NATIONAL RENTAL (CN) INC.
			2009-05-25	60252	WESTLON FINANCIAL CORP.
			2009-05-27	60273	INTERVET CANADA CORP.
			2009-05-27	60272	OFFSHORE ENERGY SERVICES CANADA LTD.

2009-05-28 60277 NU FEEDS INC.
2009-05-28 60278 NU MINK INC.
2009-05-29 60287 OMG BENEFITS
CONSULTING INC.

CREDIT UNION ACT

NOTICE OF AMALGAMATION

Total Registrations: 31

Corporations Act - Section 451
Extra-Provincial Name Changes
For the Month of May 2009

Number	Company Name
60020	SFP CANADA LTD.
2009-05-15 From:	644064 N.B. INC.
54307	E D & F MAN LIQUID PRODUCTS ULC
2009-05-28 From:	E D & F MAN LIQUID PRODUCTS INC.
58143	HOK, INC.
2009-05-28 From:	HOK CANADA, INC.

On July 1, 2009 the Superintendent of Credit Unions approved the amalgamation of Codroy Valley Credit Union Limited, Doyles, NL and Brook Street Credit Union Limited, Corner Brook, NL under the *Credit Union Act*, cC-37.2, SNL 2009. The amalgamated credit union will operate under the name Leading Edge Credit Union Limited, Doyles, NL.

CREDIT UNION DEPOSIT
GUARANTEE CORPORATION
Department of Government Services
Bill Langthorne, Executive Director

July 17

MINERAL ACT

NOTICE

Total Name Changes: 3

Corporations Act - Section 294
Extra-Provincial Registrations for Amalgamation
For the Month of May 2009

Date	Number	Company Name
2009-05-01	60109	SCHERING-PLOUGH CANADA INC.
From:	2378D	ORGANON CANADA LTD. ORGANON CANADA LTEE
2009-05-04	60128	WASTE MANAGEMENT OF CANADA CORPORATION
From:	6782F	WASTE MANAGEMENT OF CANADA CORPORATION
2009-05-08	60152	FIRSTBUS ULC
From:	58146	FIRSTBUS CANADA LIMITED
2009-05-08	60164	FIRSTCANADA ULC
From:	60152	FIRSTBUS ULC
2009-05-21	60232	FL CANADA HOLDINGS ULC
From:	6527F	FOOT LOCKER CANADA CORPORATION
2009-05-26	60259	KEY EQUIPMENT FINANCE CANADA LTD. / FINANCEMENT D'ÉQUIPEMENT KEY CANADA LTÉE
From:	4204F	KEY EQUIPMENT FINANCE CANADA LTD. FINANCEMENT D'ÉQUIPEMENT KEY CANADA LTÉE

Published in accordance with section 62 of CNLR 1143/96 under the *Mineral Act*, cM-12, RSNL 1990 as amended.

Mineral rights to the following mineral licenses have reverted to the Crown:

Mineral License	016223M
Held by	Turpin, Alexander J.
Situate near	Pork Cove, Burin Peninsula
On map sheet	01L/14
Mineral License	010669M
Held by	Brilliant Mining Corp
Situate near	Cissy Lake
On map sheet	23H/05
Mineral License	010710M
Held by	Turpin, Alexander J.
Situate near	Burin, Burin Peninsula
On map sheet	01L/14 01M/03
Mineral License	010761M
Held by	Quest Inc.
Situate near	Red Indian Lake, Central NL
On map sheet	12A/10
Mineral License	010762M
Held by	Quest Inc.
Situate near	Harmsworth Steady, Central NL
On map sheet	12A/10
Mineral License	010767M
Held by	Alterra Resources Inc.
Situate near	Barge Bay
On map sheet	12P/16
Mineral License	010768M
Held by	Alterra Resources Inc.
Situate near	Barge Bay
On map sheet	12P/16

Total Registrations for Amalgamation: 6

DEAN DOYLE
Registrar of Companies (A)

July 17

THE NEWFOUNDLAND AND LABRADOR GAZETTE
July 17, 2009

Mineral License	010782M	A portion of license	012709M
Held by	Mega Uranium Ltd.	Held by	Silver Spruce Resources Inc.
Situate near	West Micmac Lake	Situate near	Barge Bay
On map sheet	13K/09	On map sheet	02M/13 12P/16
			more particularly described in an application on file at Department of Natural Resources
Mineral License	011662M	Mineral License	013285M
Held by	Noel, E. Michele	Held by	White, Derek R.
Situate near	Fox Gulch, Baie Verte Peninsula	Situate near	Lookout Brook, Western NL
On map sheet	12H/16 12I/01	On map sheet	12B/08
Mineral License	011663M	Mineral License	013286M
Held by	Noel, E. Michele	Held by	White, Derek R.
Situate near	Lower Green Cove, Baie Verte Peninsula	Situate near	Flat Bay Brook, Western NL
On map sheet	12H/16 12I/01	On map sheet	12B/08
Mineral License	011664M	Mineral License	013311M
Held by	Noel, E. Michele	Held by	Calibre Mining Corp.
Situate near	Lower Green Cove, Baie Verte Peninsula	Situate near	Point Leamington, Central NL
On map sheet	12H/16 12I/01	On map sheet	02E/03 02E/06
A portion of license	011765M	Mineral License	013313M
Held by	Silver Spruce Resources Inc.	Held by	King, David
Situate near	Barge Bay	Situate near	Pine Pond, Central NL
On map sheet	13A/01	On map sheet	02E/06 02E/11
	more particularly described in an application on file at Department of Natural Resources	Mineral License	013314M
A portion of license	011766M 016301M	Held by	Connolly, Albert
Held by	Silver Spruce Resources Inc.	Situate near	Seal Cove, Southern NL
Situate near	Barge Bay	On map sheet	11P/08
On map sheet	02M/13 12P/16 13A/01	Mineral License	013321M
	more particularly described in an application on file at Department of Natural Resources	Held by	Bayswater Ventures Corp.
A portion of license	011767M	Situate near	Kaipokok River
Held by	Silver Spruce Resources Inc.	On map sheet	13K/16 13J/13
Situate near	Barge Bay	Mineral License	013337M
On map sheet	12P/16	Held by	Bayswater Ventures Corp.
	more particularly described in an application on file at Department of Natural Resources	Situate near	Kanairiktok River
A portion of license	011768M	On map sheet	13K/15
Held by	Silver Spruce Resources Inc.	A portion of license	015279M
Situate near	Barge Bay	Held by	Silver Spruce Resources Inc.
On map sheet	12P/16	Situate near	Barge Bay
	more particularly described in an application on file at Department of Natural Resources	On map sheet	12P/16
Mineral License	011851M		more particularly described in an application on file at Department of Natural Resources
Held by	White Bear Resources Incorporated	Mineral License	015280M
Situate near	Evening Lake	Held by	Silver Spruce Resources Inc.
On map sheet	23G/09	Situate near	Barge Bay
Mineral License	011854M	On map sheet	12P/16
Held by	White Bear Resources Incorporated	A portion of license	015281M
Situate near	Evening Lake	Held by	Silver Spruce Resources Inc.
On map sheet	23G/09	Situate near	Barge Bay
Mineral License	015109M	On map sheet	12P/16
Held by	Tripple Uranium Resources Inc.		more particularly described in an application on file at Department of Natural Resources
Situate near	North of Happy Valley –Goose Bay	Mineral License	015282M
On map sheet	13F/07	Held by	Silver Spruce Resources Inc.
		Situate near	Barge Bay
		On map sheet	12P/16
		Mineral License	013606M
		Held by	Silver Spruce Resources Inc.
		Situate near	Barge Bay
		On map sheet	12P/16

THE NEWFOUNDLAND AND LABRADOR GAZETTE
July 17, 2009

A portion of license	015283M	Situate near	Great Rattling Brook,
Held by	Silver Spruce Resources Inc.		Central NL
Situate near	Barge Bay	On map sheet	02D/12
On map sheet	02M/13 12P/16 03D/04 13A/01	Mineral License	014743M
more particularly described in an application on file at Department of Natural Resources		Held by	Lewis, Donna
		Situate near	Great Rattling Brook, Central NL
Mineral License	015284M	On map sheet	02D/12
Held by	Silver Spruce Resources Inc.	Mineral License	014752M
Situate near	Barge Bay	Held by	Lewis, Donna
On map sheet	03D/04	Situate near	Isabella Falls
		On map sheet	13L/02
Mineral License	015285M	Mineral License	014753M
Held by	Silver Spruce Resources Inc.	Held by	Lewis, Donna
Situate near	Barge Bay	Situate near	Strange Lake, West of Nain
On map sheet	03D/04	On map sheet	24A/08
A portion of license	015286M	Mineral License	014754M
Held by	Silver Spruce Resources Inc.	Held by	Lannon, Rosalind
Situate near	Barge Bay	Situate near	Noel Pauls Brook, Central NL
On map sheet	12P/16	On map sheet	12A/09
more particularly described in an application on file at Department of Natural Resources		Mineral License	014759M
A portion of license	016281M	Held by	Metals Creek Resources Corp.
Held by	Meshner, Ivan	Situate near	Newfoundland Dog Pond, Central NL
Situate near	Saunders Brook, Central NL	On map sheet	02D/05 12A/08
On map sheet	12H/08	Mineral License	014805M
more particularly described in an application on file at Department of Natural Resources		Held by	Keats, Christina
A portion of license	013840M	Situate near	Dildo Pond, Central NL
Held by	Silver Spruce Resources Inc.	On map sheet	02E/02 02E/07
Situate near	Barge Bay	Mineral License	014814M
On map sheet	03D/04 13A/01	Held by	Sheppard, Barry
more particularly described in an application on file at Department of Natural Resources		Situate near	Morg Keepings Brook, Southern NL
Mineral License	014737M	On map sheet	11O/16
Held by	Lewis, Kenneth J.	Mineral License	014815M
Situate near	Baie Verte Area	Held by	Crocker Sr., Paul
On map sheet	12H/16	Situate near	Princess Lake, Central NL
Mineral License	014738M	On map sheet	12A/04
Held by	Cramm, David	Mineral License	014817M
Situate near	Great Rattling Brook, Central NL	Held by	Kennecott Canada Exploration Inc.
On map sheet	02D/12	Situate near	Bruce Lake
Mineral License	014739M	On map sheet	23G/02 23G/07
Held by	Lewis, Donna	Mineral License	014818M
Situate near	Rolling Pond, Central NL	Held by	Kennecott Canada Exploration Inc.
On map sheet	02D/12	Situate near	Sawbill Lake
Mineral License	014740M	On map sheet	23G/07 23G/08
Held by	Lewis, Donna	Mineral License	014820M
Situate near	Northwest Gander River Central NL	Held by	Kennecott Canada Exploration Inc.
On map sheet	02D/12	Situate near	Steers Lake
Mineral License	014741M	On map sheet	23G/07 23G/08
Held by	Lewis, Donna	Mineral License	014821M
Situate near	Great Rattling Brook, Central NL	Held by	Kennecott Canada Exploration Inc.
On map sheet	02D/12	Situate near	Sawbill Lake
Mineral License	014742M	On map sheet	23G/07
Held by	Lewis, Donna		

Mineral License Held by Situates near On map sheet	014824M LeDrew, Donald Sandy Harbour River, Southern NL 01M/15
Mineral License Held by Situates near On map sheet	014828M White Bear Resources Incorporated Wheeler Lake 23G/02
Mineral License Held by Situates near On map sheet	014829M White Bear Resources Incorporated Lac Montennon 23B/14 23G/03
Mineral License Held by Situates near On map sheet	014830M White Bear Resources Incorporated Lac Montennon 23G/03
Mineral License Held by Situates near On map sheet	014831M White Bear Resources Incorporated Pegrum Lake 23G/07
Mineral License Held by Situates near On map sheet	014834M White Bear Resources Incorporated Howells River 23J/15 23J/14
Mineral License Held by Situates near On map sheet	014836M White Bear Resources Incorporated Stakit Lake 23J/10 23J/15
Mineral License Held by Situates near On map sheet	014837M White Bear Resources Incorporated Ruth Lake 23J/15
Mineral License Held by Situates near On map sheet	014838M White Bear Resources Incorporated Carol Lake Area 23B/14 23G/03
Mineral License Held by Situates near On map sheet	014839M White Bear Resources Incorporated Wheeler Lake 23G/02

JIM HINCHEY P.GEO
Manager - Mineral Rights

File # 774: 3472, 5590, 5959, 5996, 6017, 6018, 6022, 6023, 6034, 6685, 6686, 6687, 6782, 6783, 6784, 6785, 6850, 6853, 7071, 7587, 7873, 8138, 8139, 8164, 8166, 8167, 8174, 8189, 8427, 8429, 8430, 8433, 8434, 8437, 8438, 8533, 8611, 8662, 9463, 9464, 9465, 9466, 9467, 9468, 9469, 9478, 9479, 9480, 9484, 9488, 9496, 9497, 9499, 9500, 9502, 9503, 9506, 9507, 9508, 9509, 9510, 9511, 9512, 9513, 9514, 9515

July 17

URBAN AND RURAL PLANNING ACT

**NOTICE OF REGISTRATION
TOWN OF FLATROCK
DEVELOPMENT REGULATIONS
AMENDMENT No. 18, 2009**

TAKE NOTICE that the Town of Flatrock Development Regulations Amendment No.18, 2009, adopted by Council on the 27th day of April, 2009, has been registered by the Minister of Municipal Affairs.

In general terms, Development Regulations Amendment No. 18, 2009, will re-zone a parcel of land from Residential Subdivision Area (RSA) to Residential Rural (RR). The amendment is required to accommodate a proposed Residential Subdivision to be located north of Pouch Cove Highway extending to Medalsis Pond Road.

The Town of Flatrock Development Regulations Amendment No. 18, 2009, comes into effect on the day that this notice is published in *The Newfoundland and Labrador Gazette*. Anyone who wishes to inspect a copy of the Town of Flatrock Development Regulations Amendment No. 18, 2009, may do so at the Town Office, Flatrock, during normal working hours.

TOWN OF FLATROCK
Diane Stamp, Town Clerk (A)

July 17

**NOTICE OF REGISTRATION
TOWN OF PARADISE
DEVELOPMENT REGULATIONS
AMENDMENT NO. 41, 2009**

TAKE NOTICE that the Town of Paradise Development Regulations Amendment No. 41, 2009 adopted on the 2nd day of June, 2009, has been registered by the Minister of Municipal Affairs.

In general terms, the purpose of Development Regulations Amendment No. 41, 2009 is to re-zone land directly east of Spracklin Boulevard from Residential Subdivision Area (RSA) to Residential Low Density (RLD). The amendment accommodates the residential subdivision development of approximately 20 residential lots with road allowances for future development.

The amendment comes into effect on the day that this notice is published in *The Newfoundland and Labrador*

The lands covered by this notice except for the lands within Exempt Mineral Lands, the Exempt Mineral Lands being described in CNLR 1143/96 and NLR 71/98, 104/98, 97/2000, 36/2001, 31/2004, 78/2006, 8/2008 and 28/2009 and outlined on 1:50 000 scale digital maps maintained by the Department of Natural Resources, will be open for staking after the hour of 9:00 a.m. on the 32nd clear day after the date of this publication.

Gazette. Anyone wishing to inspect a copy of the Development Regulations Amendment No. 41, 2009 may do so at the Paradise Town Hall, 28 McNamara Drive, during normal hours of operation.

TOWN OF PARADISE
Joyce Moss, Town Clerk

July 17

CHANGE OF NAME ACT

C-8 RSNL 1990

**NOTICE OF APPLICATION
FOR CHANGE OF NAME**

NOTICE is hereby given that an application will be made to the Minister of Government Services for a change of name, pursuant to the provisions of the *Change of Name Act*, by me:

CORRINA MARCELLA WAKEHAM

of 3 Brophy Place, St. John's, A1B 3Y2 in the Province of Newfoundland and Labrador, as follows:

To change my name from

CORRINA MARCELLA WAKEHAM
to
CORRINA MARCELLA REID

DATED this 6th day of July, 2009.

CORRINA MARCELLA WAKEHAM
(Signature of Applicant)

July 17

**NOTICE OF APPLICATION
FOR CHANGE OF NAME**

NOTICE is hereby given that an application will be made to the Minister of Government Services for a change of name, pursuant to the provisions of the *Change of Name Act*, by me:

JOSEPHINE JOY LEGGE

of Box 240, RR2, Pike's Arm, A0G 2R0 in the Province of Newfoundland and Labrador, as follows:

To change my name from

JOSEPHINE JOY LEGGE
to
JOSEPHINE JOY CANNING

DATED this 7th day of July, 2009.

JOSEPHINE JOY LEGGE
(Signature of Applicant)

July 17

**NOTICE OF APPLICATION
FOR CHANGE OF NAME**

NOTICE is hereby given that an application will be made to the Minister of Government Services for a change of name, pursuant to the provisions of the *Change of Name Act*, by me:

KIM ANSTEY

of 156 Michener Avenue, Mt. Pearl A1N 4G4, in the Province of Newfoundland and Labrador, as follows:

To change my minor unmarried child's name from

ASHLAN DIANE KENNEDY
to
ASHLAN DIANE ANSTEY-KENNEDY

DATED this 7th day of July, 2009.

KIM ANSTEY
(Signature of Applicant)

July 17

**NOTICE OF APPLICATION
FOR CHANGE OF NAME**

NOTICE is hereby given that an application will be made to the Minister of Government Services for a change of name, pursuant to the provisions of the *Change of Name Act*, by me:

AMBER ELIZABETH CUFF

of 171 Main Street, Bishop's Falls A0H 1C0, in the Province of Newfoundland and Labrador, as follows:

To change my minor unmarried child's name from

CHLOE NELLIE CUFF-JENKINS
to
CHLOE NELLIE CUFF

DATED this 30th day of June, 2009.

AMBER ELIZABETH CUFF
(Signature of Applicant)

July 17

LANDS ACT

NOTICE OF INTENT

LANDS ACT, c36, SNL 1991

Notice is hereby given that BRADLEY HANCOCK of Forteau intends to apply to the Department of Environment and Conservation, two months from the publication of this Notice, to acquire title, pursuant to Section 7(2) of the said Act, to that piece of Crown Land situated within fifteen (15) metres of the waters of Forteau Bay, in the Electoral District of Cartwright-Lanse au Clair for the purpose of dwelling and being more particularly described as follows:

*Bounded on the North by Crown Land:
For a distance of 25 m;
Bounded on the East by Ocean (Forteau Bay)*

*for a distance of 30 m;
Bounded on the South by Crown Land
For a distance of 30 m;
Bounded on the West by Road (Harbour Drive)
For a distance of 45 m;
And containing an area of
approximately 1000 square metres.*

Any person wishing to object to the application must file the objection, in writing, within one month from the publication of this notice, with reasons for it, to the Minister of Environment and Conservation, and mail to the nearest Regional Lands Office:

c/o Eastern Regional Lands Office, P. O. Box 8700, 5 Mews Place, St. John's, NL, A1B 4J6.

c/o Central Regional Lands Office, P. O. Box 2222, Gander, NL, A1V 2N9.

c/o Western Regional Lands Office, P. O. Box 2006, Noton Building, Corner Brook, NL, A2H 6J8.

c/o Labrador Regional Lands Office, P. O. Box 3014, Station "B", Happy Valley-Goose Bay, NL A0P 1E0.

For further information on the proposed application, please contact BRADLEY HANCOCK Telephone (709) 931-2743.

July 17

NOTICE OF INTENT

LANDS ACT, c36, SNL 1991

Notice is hereby given that THE SMALL BOAT BASIN COMMITTEE of Hodge's Cove, NL intends to apply to the Department of Environment and Conservation, two months from the publication of this Notice, to acquire title, pursuant to Section 7(2) of the said Act, to that piece of Crown Land situated within fifteen (15) metres of the waters of the west side of Hodge's Cove Pond Basin in the community of Hodge's Cove, in the Electoral District of Trinity North for the purpose of community enhancement and recreation and being more particularly described as follows:

*Bounded on the North by Crown Land
(Hodge's Cove Beach)
For a distance of 26 m;
Bounded on the East by the waters of
Hodge's Cove Pond Basin
for a distance of 240 m;
Bounded on the South by
the boundaries of Route 204
for a distance of 53 m;
Bounded on the West by Crown Land
for a distance of 210 m
And containing an area of
approximately 9900 square metres.*

Any person wishing to object to the application must file the objection, in writing, within one month from the publication of this notice, with reasons for it, to the

Minister of Environment and Conservation, and mail to the nearest Regional Lands Office:

c/o Eastern Regional Lands Office, P. O. Box 8700, 5 Mews Place, St. John's, NL, A1B 4J6.

c/o Central Regional Lands Office, P. O. Box 2222, Gander, NL, A1V 2N9.

c/o Western Regional Lands Office, P. O. Box 2006, Noton Building, Corner Brook, NL, A2H 6J8.

c/o Labrador Regional Lands Office, P. O. Box 3014, Station "B", Happy Valley-Goose Bay, NL A0P 1E0.

For further information on the proposed application, please contact SIDNEY SMITH Telephone (709) 548-2362.

July 17

QUIETING OF TITLES ACT

2009 06T 0097 IN THE SUPREME COURT OF NEWFOUNDLAND AND LABRADOR TRIAL DIVISION

IN THE MATTER OF THE *QUIETING OF TITLES ACT*,
CQ-3 OF THE RSNL, 1990,

AND

IN THE MATTER of a certain piece or parcel of property situate at Creston Boulevard, in the Town of Marystown, in the Province of Newfoundland and Labrador,

AND

IN THE MATTER of an application by JESSIE HODDER.

NOTICE IS HEREBY GIVEN to all parties that JESSIE HODDER, of the City of Mississauga, in the Province of Ontario, Canada, has applied to the Supreme Court of Newfoundland and Labrador, Trial Division, in the Judicial Centre of Grand Bank, to have the title to ALL THAT piece or parcel of land situate and being on Creston Boulevard, in the Town of Marystown, in the Electoral District of Burin-Placentia West, in the Province of Newfoundland and Labrador, and as more particularly described in Schedule "A" hereto annexed, of which the said Jessie Hodder claims to be the owner, investigated, and for a declaration that the said Jessie Hodder is the absolute owner thereof.

All persons having a claim adverse to the title claimed by the said Jessie Hodder shall file in the Registry of the Supreme Court, Trial Division P.O. Box 910, Grand Bank, Newfoundland, Canada, A0E 1W0, particulars of such adverse claim and serve the same on the undersigned solicitor for the Applicant on or before the 31st day of July, 2009, after which date no party having any claim shall be permitted to file the same or to be heard except by special leave of the Court and subject to such conditions as the Court may deem just.

All such adverse claims shall then be investigated in such names as the Supreme Court may direct.

DATED at Marystown, Newfoundland and Labrador this 30th day of June, 2009.

MACBEATH & ASSOCIATES
PER: Renée L.F. Appleby

ADDRESS FOR SERVICE IS:
P.O. Box 218
Marystown, NL
A0E 2M0

SCHEDULE "A"

All that piece or parcel of land situate and being in the Town of Marystown, in the Electoral District of Burin-Placentia West, abutted and bounded as follows, that is to say:

Beginning at a point in the northern limit of Creston Boulevard, thirty decimal four eight metres wide, the said point being distant seventy-one decimal four eight five metres as measured on a bearing of south eighty-three degrees eighteen minutes eighteen seconds west from Crown Land Monument No. 76G2549. (Premised bearing from Crown Land Monument No. 76G2549 to Crown Land Monument No 76G2550 in north sixty-one degrees fifty-two minutes fifty-seven seconds east)

Thence running along the northerly limit of Creston Boulevard south eight-one degrees fifty-two minutes zero seconds west seventy-eight decimal three eight zero metres;

Thence running by land of Samuel Bungay north thirty-seven degrees fifty-three minutes zero seconds west one hundred and twenty-two decimal nine one zero metres;

Thence running by a Right of Way north forty-two degrees fifty-three minutes zero seconds west twenty-one decimal eight one zero metres; thence north thirty-six degrees thirty-one minutes zero seconds west three decimal six six zero metres;

Thence running by land of Fraser Cluett north forty degrees twenty-eight minutes zero seconds west fifty-nine decimal three six zero metres; thence north forty-seven degrees fifteen minutes zero seconds west sixty-four decimal three one zero metres;

Thence running by land of Eric Rose, Vivian White and Charles Hodder north forty-nine degrees thirty-one minutes zero seconds west eighty-eight decimal nine five zero metres;

Thence running by a Right of Way and by land of Charles Hodder north forty-one degrees forty-four minutes zero seconds west twenty-one decimal six five zero metres;

And thence to continue by land of Charles Hodder north forty-two degrees thirty-five minutes zero seconds west twenty-three decimal three four zero metres;

Thence following along the sinuosities of the Shoreline Reservation, ten metres wide, a distance of one hundred and forty-seven metres to a point, the said point being north sixty-six degrees seven minutes zero seconds east one hundred and forty-five decimal zero four zero metres from that point last mentioned;

Thence running by land of the Estate of Chester Taylor south eighteen degrees thirteen minutes zero seconds east one hundred and thirty-three decimal two seven zero metres; thence south twenty degrees six minutes zero seconds east one hundred decimal eight seven zero metres; thence north fifty-five degrees forty-one minutes zero seconds east twenty-six decimal four eight zero metres; thence north four degrees fifty-five minutes zero seconds west two hundred and sixteen decimal two nine zero metres;

Thence following along the sinuosities of the Shoreline Reservation, ten metres wide, a distance of one hundred and fifty-two metres to a point, the said point being south thirty-four degrees fifty-two minutes twenty-three seconds east one hundred and twenty-nine decimal six five seven metres from that point last mentioned;

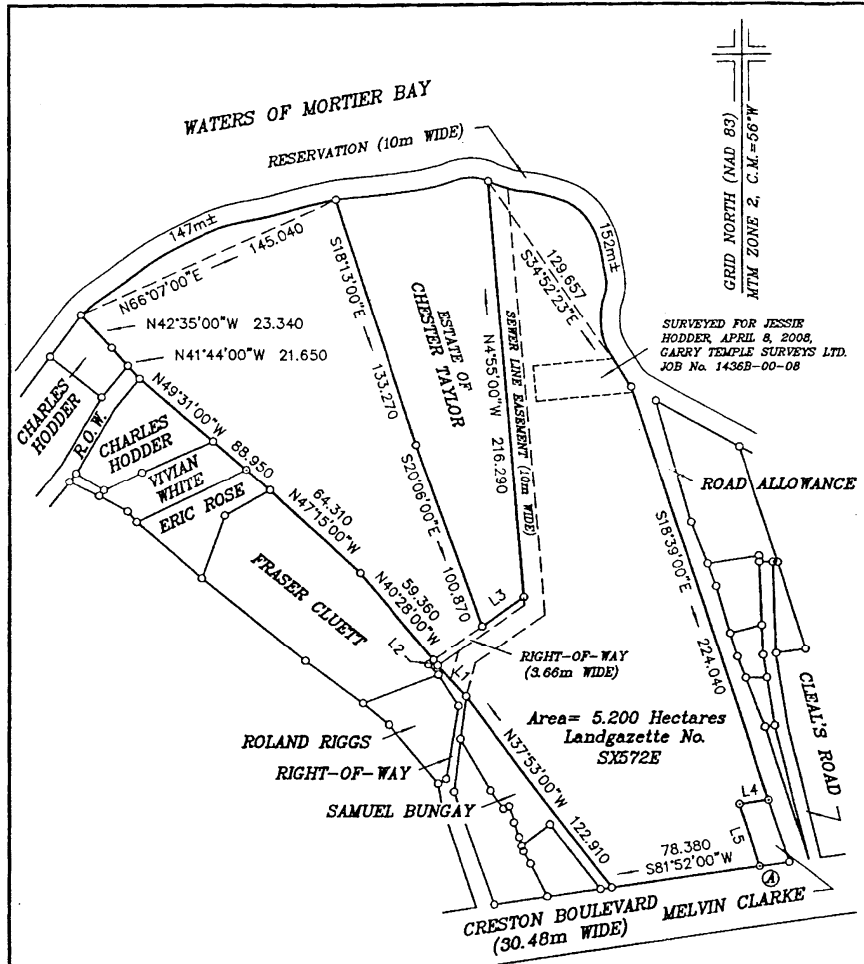
Thence running along the westerly limit of a Road Allowance south eighteen degrees thirty-nine minutes zero seconds east two hundred and twenty-four decimal zero four zero metres;;

Thence running by land of Melvin Clarke south eighty-one degrees fifty-two minutes zero seconds west fifteen decimal two four zero metres; thence south eighteen degrees thirty-nine minutes zero seconds east thirty-three decimal five three zero metres, more or less, to the point of beginning;

Reserving, nevertheless, out of the above described piece or parcel of land a Right of Way, three decimal six six metres wide, for the use by the owners of the Estate of Chester Taylor as is shown on the attached plan;

The above described piece or parcel of land contains an area of 5.200 hectares, more or less, and is subject to a Sewer Line Easement, ten metres wide, extending through the said land as is more particularly shown on diagram annexed hereto;

All bearings being referred to the meridian of the fifty-six degrees west longitude of the Modified Three Degree Traverse Mercator Projection (NAD. 83)



SURVEYED FOR JESSIE HODDER, APRIL 8, 2008, GARRY TEMPLE SURVEYS LTD. JOB No. 1436B-00-08

TIE-IN INFORMATION

LINE	BEARING	DIST.	GRID DIST.
76G2549-76G2550	N61°52'57"E		
76G2549-④	S83°18'18"W	71.485	71.481

COMBINED SCALE FACTOR FOR TIE-IN 0.999944

LINE	BEARING	DISTANCE
L1	N42°53'00"W	21.810
L2	N36°31'00"W	3.660
L3	N55°41'00"E	26.480
L4	S81°52'00"W	15.240
L5	S18°39'00"E	33.530

NOTE:
© GARRY TEMPLE, NEWFOUNDLAND LAND SURVEYOR, 2009, UNAUTHORIZED USE, ALTERATIONS OR REPRODUCTION OF THIS PLAN IS PROHIBITED BY LAW AS OUTLINED IN THE COPYRIGHT ACT. HOWEVER, USE AND REPRODUCTION THEREOF BY OR ON BEHALF OF THE PERSON FOR WHOM THIS PLAN WAS PREPARED, IS PERMITTED, PROVIDED THAT NO ALTERATIONS WHATSOEVER ARE MADE THERETO.
REFERENCE SURVEY: BERRICK KING SURVEYS LIMITED, JOB NUMBER 1436-60-82, DATED NOVEMBER 16, 1982
TOWN OF MARYSTOWN SEWER LINE EASEMENT (10m WIDE)
REFERENCE SURVEY: BERRICK KING SURVEYS LIMITED, JOB NUMBER 1399R-60-82, DATED OCTOBER 6, 1982

LEGEND:
PROVINCIAL CONTROL MONUMENT ---▲
STANDARD IRON BAR ---○
CAPPED IRON BAR ---◉
STEEL FENCE POST ---⊗
SURVEY TACK ---□
UTILITY LINE ---
UTILITY POLE ---●
FENCE LINE ---x
ALL LINEAR MEASUREMENTS ARE METRIC

	GARRY TEMPLE SURVEYS LIMITED NEWFOUNDLAND LAND SURVEYORS, CANADA LANDS SURVEYOR P.O. BOX 1237, MARYSTOWN, NL, A9E 2J4 (709) 536-2722	
	PROPERTY CLAIMED BY JESSIE HODDER MARYSTOWN, NEWFOUNDLAND & LABRADOR	
	SCALE: 1:2500	JOB No: 1436R-00-09
	DATE: MAY 12, 2009	SURVEY: G. TEMPLE

2009 04T 0018
IN THE SUPREME COURT OF
NEWFOUNDLAND AND LABRADOR
TRIAL DIVISION

SCHEDULE "A"

IN THE MATTER OF that piece or parcel of land situate, lying and being at Pond Road, in the Town of Rocky Harbour, in the Province of Newfoundland and Labrador

AND

IN THE MATTER OF the Application of FLORENCE PAYNE, of the Town of Rocky Harbour, in the Province of Newfoundland and Labrador, Canada, for a Certificate of Title of said parcel of land pursuant to the *Quieting of Titles Act*, RSNL 1990, cQ-3, as amended

NOTICE

Notice is hereby given to all persons that FLORENCE PAYNE, as owner, has applied to the Supreme Court of Newfoundland and Labrador, Trial Division, at the City of Corner Brook, in the Province of Newfoundland and Labrador, to have investigated the title to ALL THAT piece or parcel of land situate, lying and being at Pond Road, in the Town of Rocky Harbour, in the Province of Newfoundland and Labrador, and further bounded and described as set out in the Schedule "A" attached hereto; and for a Declaration that the said owner is the absolute owner thereof and the said owner has been Ordered to publish notice of the Application as required by the above named Act.

All persons having title adverse to the said title claimed by the said Owner shall file with the Deputy Registrar of the Supreme Court of Newfoundland and Labrador, Trial Division, at Corner Brook, Newfoundland and Labrador, particulars of such adverse claim and serve the same together with an Affidavit verifying the same to the undersigned solicitors for the Owner, on or before the 11th day of August, 2009, after which date no party having any claim shall be permitted to file the same or to be heard except by leave of the Court and subject to such terms and conditions as the Court may deem just.

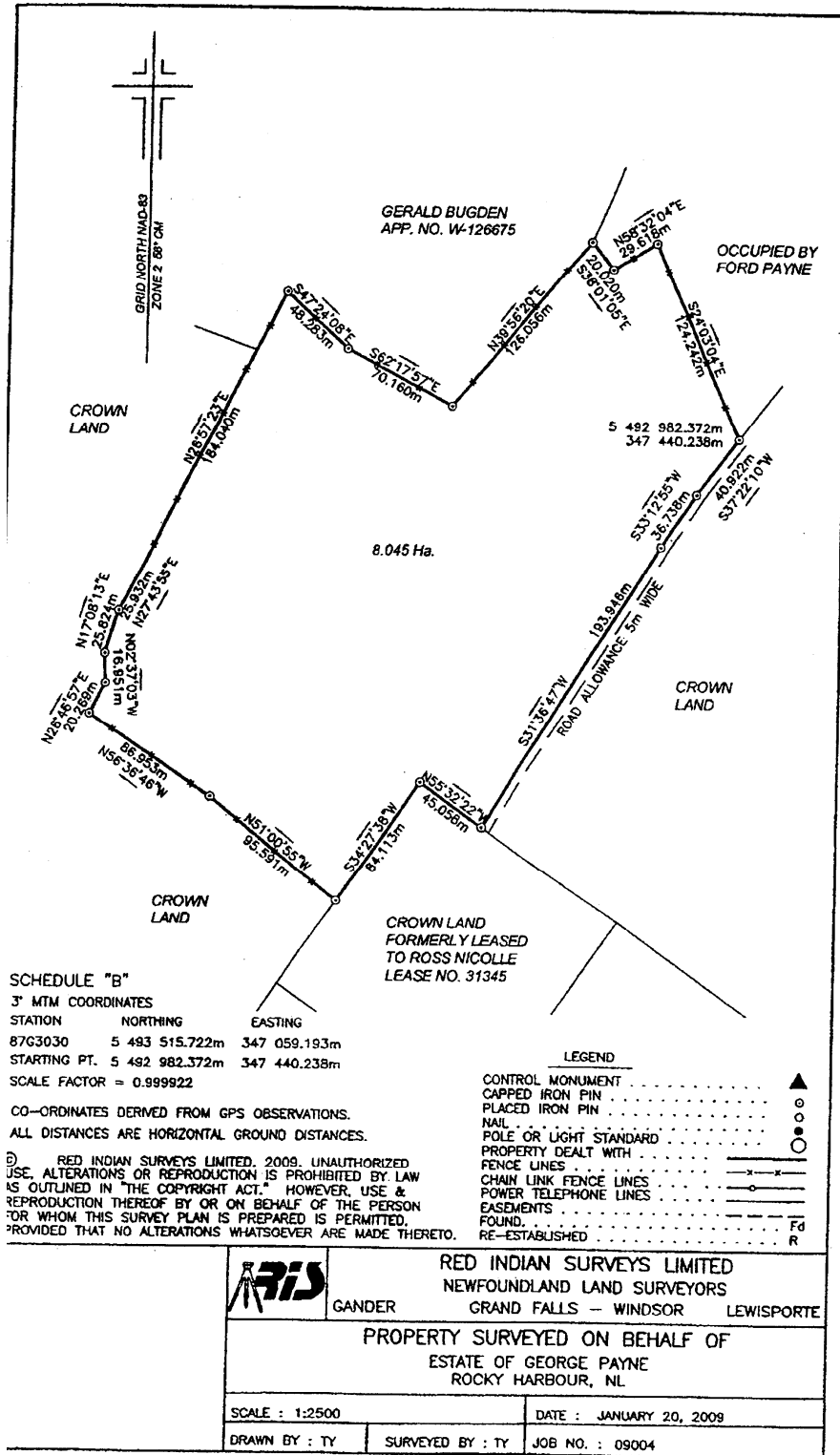
All such adverse claims shall then be investigated in such manner as the Court may direct.

DATED at Corner Brook, Newfoundland and Labrador, this 19th day of January, 2009.

POOLE ALTHOUSE
Solicitors for the Applicant
PER: Dean A. Porter

ADDRESS FOR SERVICE IS:
P.O. Box 812
49 - 51 Park Street,
Corner Brook, NL A2H 6H7
Tel: (709) 634-3136
Fax: (709) 634-8247

All that piece or parcel of land situate and being at Rocky Harbour in the Electoral District of St. Barbe abutted and bounded as follows, that is to say: Beginning at a point in the northwesterly limit of a Road Allowance, five meters wide, the said point having Three Degree MTM Coordinates of north 5 492 982.372 meters and east 347 440.238 meters, thence running along the aforesaid northwesterly limit of a Road Allowance, five meters wide, south thirty-seven degrees twenty-two minutes ten seconds west forty decimal nine two two meters, thence south thirty-three degrees twelve minutes fifty-five seconds west thirty-six decimal seven three eight meters, thence south thirty-one degrees thirty-six minutes forty-seven seconds west one hundred ninety-three decimal nine four six meters, thence running by Crown Land formerly leased to Ross Nicolle Lease No. 31345 north fifty-five degrees thirty-two minutes twenty-two seconds west forty-five decimal zero five eight meters, thence south thirty-four degrees twenty-seven minutes thirty-eight seconds west eighty-four decimal one one three meters, thence running by Crown Land north fifty-one degrees zero zero minutes fifty-five seconds west ninety-five decimal five nine one meters, thence north fifty-six degrees thirty-six minutes forty-six seconds west eighty-six decimal nine five three meters, thence north twenty-six degrees forty-six minutes fifty-seven seconds east twenty decimal two six nine meters, thence north zero two degrees thirty-seven minutes zero three seconds west sixteen decimal nine five one meters, thence north seventeen degrees zero eight minutes thirteen seconds east twenty-five decimal eight two four meters, thence north twenty-seven degrees forty-three minutes fifty-five seconds east twenty-five decimal nine three two meters, thence running by Crown Land and by land being applied for from Crown by Gerald Bugden App. No. W-126675 north twenty-six degrees fifty-seven minutes twenty-three seconds east one hundred eighty-four decimal zero four zero meters, thence running by land being applied for from Crown by Gerald Bugden App. No. W-126675 south forty-seven degrees twenty-four minutes zero eight seconds east forty-eight decimal two eight three meters, thence south sixty-two degrees seventeen minutes fifty-seven seconds east seventy decimal one six zero meters, thence north thirty-nine degrees fifty-six minutes twenty seconds east one hundred twenty-six decimal zero five six meters, thence running by land occupied by Ford Payne south thirty-eight degrees zero one minute zero five seconds east twenty decimal zero two zero meters, thence north fifty-eight degrees thirty-two minutes zero four seconds east twenty-nine decimal six one eight meters, thence south twenty-four degrees zero three minutes zero four seconds east one hundred twenty-four decimal two four two meters, more or less, to the point of beginning and being more particularly shown on the attached plan, the above described piece or parcel of land containing an area of 8.045 hectares, more or less, all bearings and coordinates being referenced to the Three Degree MTM Projection System, NAD-83, zone 3, with the Central Meridian being 58 degrees 30 minutes.



TRUSTEE ACT

ESTATE NOTICE

IN THE MATTER OF the Estate of WILSON ALBERT KEATS, late of St. John's, in the Province of Newfoundland and Labrador, Gentleman, Deceased

ADDRESS FOR SERVICE
P. O. Box 272, 43 Main Street
Stephenville, NL
A2N 2Z4

July 17

All persons claiming to be creditors of, or who have any claims or demands upon, or affecting the Estate of the above named WILSON ALBERT KEATS, Deceased, are hereby requested to send particulars of same, in writing, duly attested, to the undersigned Solicitor for the Executor of the aforesaid Estate, on or before the 10th day of August, 2009, after which date the Executor will proceed to distribute the said Estate, having regard only to the claims of which he then shall have had notice.

DATED at St. John's, aforesaid, this 10th day of July, 2009.

WELLS & COMPANY PLC INC.
Solicitor for the Executor
PER: Edward B. Ring

ADDRESS FOR SERVICE
P.O. Box 26111 LeMarchant Rd. RPO
10 Freshwater Road
St. John's, NL A1E 0A5
Tel: (709) 739-7768
Fax: (709) 739-4434

July 17

ESTATE NOTICE

IN THE ESTATE of GEORGE S. LEGGE Late of the Community of Heatherton, in the Province of Newfoundland and Labrador, fisherman, deceased: April 3, 2008

All persons claiming to be creditors of or who have any claims or demands upon or affecting the Estate of GEORGE S. LEGGE, late of the Community of Heatherton, in the Province of Newfoundland and Labrador, deceased, are hereby requested to send the particulars of the same in writing, duly attested, to the undersigned Solicitor for the Executor of the Estate on or before the 10th day of August, 2009, after which date the said Executor will proceed to distribute the said Estate having regard only to the claims of which notice shall have been received.

DATED at Stephenville, Newfoundland and Labrador, this 30th day of June, 2009

ROXANNE PIKE
Solicitor for the Executor
PER: Roxanne Pike



THE NEWFOUNDLAND AND LABRADOR GAZETTE

PART II

SUBORDINATE LEGISLATION FILED UNDER THE STATUTES AND SUBORDINATE LEGISLATION ACT

Vol. 84

ST. JOHN'S, FRIDAY, JULY 17, 2009

No. 29

NEWFOUNDLAND AND LABRADOR REGULATIONS

NLR 57/09
NLR 58/09
NLR 59/09
NLR 60/09
NLR 61/09
NLR 62/09
NLR 63/09
NLR 64/09
NLR 65/09



**NEWFOUNDLAND AND LABRADOR
REGULATION 57/09**

Income Tax Deduction Regulations (Amendment)
under the
Income Tax Act, 2000
(O.C. 2009-218)

(Filed July 15, 2009)

Under the authority of section 68 of the *Income Tax Act, 2000*, the Lieutenant-Governor in Council makes the following regulations.

Dated at St. John's, July 14, 2009.

Sandra Barnes
Deputy Clerk of the Executive Council

REGULATIONS

Analysis

1. Sch. A Amdt.
2. Sch. B R&S

NLR 123/07
as amended

1. Schedule A of the *Income Tax Deduction Regulations* is amended by repealing section 1 and substituting the following:

1. For the purpose of the description of F in paragraph 4(2)(b), from January 1 to December 31, 2009, the ranges of remuneration for each pay period in a taxation year shall be determined as follows:

- (a) in respect of a daily pay period, the ranges of remuneration commence at \$35 and increase in increments of \$2 for each range up to and including \$142.99;
- (b) in respect of a weekly pay period, the ranges of remuneration commence at \$158 and increase in increments of
 - (i) \$2 for each range up to and including \$265.99,
 - (ii) \$4 for each range from \$266 to \$485.99,
 - (iii) \$8 for each range from \$486 to \$925.99,
 - (iv) \$12 for each range from \$926 to \$1,585.99,
 - (v) \$16 for each range from \$1,586 to \$2,465.99, and
 - (vi) \$20 for each range from \$2,466 to \$3,565.99;
- (c) in respect of a bi-weekly pay period, the ranges of remuneration commence at \$314 and increase in increments of
 - (i) \$4 for each range up to and including \$529.99,
 - (ii) \$8 for each range from \$530 to \$969.99,
 - (iii) \$16 for each range from \$970 to \$1,849.99,
 - (iv) \$24 for each range from \$1,850 to \$3,169.99,
 - (v) \$32 for each range from \$3,170 to \$4,929.99, and
 - (vi) \$40 for each range from \$4,930 to \$7,129.99;
- (d) in respect of a semi-monthly pay period, the ranges of remuneration commence at \$340 and increase in increments of
 - (i) \$4 for each range up to and including \$555.99,
 - (ii) \$8 for each range from \$556 to \$995.99,
 - (iii) \$18 for each range from \$996 to \$1,985.99,

- (iv) \$26 for each range from \$1,986 to \$3,415.99,
 - (v) \$34 for each range from \$3,416 to \$5,285.99, and
 - (vi) \$44 for each range from \$5,286 to \$7,705.99;
- (e) in respect of 12 monthly pay periods, the ranges of remuneration commence at \$680 and increase in increments of
- (i) \$8 for each range up to and including \$1,111.99,
 - (ii) \$18 for each range from \$1,112 to \$2,101.99,
 - (iii) \$34 for each range from \$2,102 to \$3,971.99,
 - (iv) \$52 for each range from \$3,972 to \$6,831.99,
 - (v) \$70 for each range from \$6,832 to \$10,681.99, and
 - (vi) \$86 for each range from \$10,682 to \$15,411.99;
- (f) in respect of 10 pay periods a year, the ranges of remuneration commence at \$816 and increase in increments of
- (i) \$10 for each range up to and including \$1,355.99,
 - (ii) \$20 for each range from \$1,356 to \$2,455.99,
 - (iii) \$42 for each range from \$2,456 to \$4,765.99,
 - (iv) \$62 for each range from \$4,766 to \$8,175.99,
 - (v) \$84 for each range from \$8,176 to \$12,795.99, and
 - (vi) \$104 for each range from \$12,796 to \$18,515.99;
- (g) in respect of 13 pay periods a year, the ranges of remuneration commence at \$628 and increase in increments of
- (i) \$8 for each range up to and including \$1,059.99,
 - (ii) \$16 for each range from \$1,060 to \$1,939.99,

- (iii) \$32 for each range from \$1,940 to \$3,699.99,
 - (iv) \$48 for each range from \$3,700 to \$6,339.99,
 - (v) \$64 for each range from \$6,340 to \$9,859.99, and
 - (vi) \$80 for each range from \$9,860 to \$14,259.99; and
- (h) in respect of 22 pay periods a year, the ranges of remuneration commence at \$371 and increase in increments of
- (i) \$6 for each range up to and including \$694.99,
 - (ii) \$10 for each range from \$695 to \$1,244.99,
 - (iii) \$18 for each range from \$1,245 to \$2,234.99,
 - (iv) \$28 for each range from \$2,235 to \$3,774.99,
 - (v) \$38 for each range from \$3,775 to \$5,864.99, and
 - (vi) \$48 for each range from \$5,865 to \$8,504.99.

2. Schedule B of the regulations is repealed and the following substituted:

1. For the purpose of paragraph 4(2)(c), from January 1 to December 31, 2009 the mid-point of each range of base credit amounts listed in the first column of the following table is the amount specified opposite in the second column of the table.

Column 1	Column 2
Range of base credit amount	Mid-point
\$0 to \$7,778	\$7,778
From \$7,778.01 to \$9,458	\$8,618
From \$9,458.01 to \$11,138	\$10,298
From \$11,138.01 to \$12,818	\$11,978
From \$12,818.01 to \$14,498	\$13,658
From \$14,498.01 to \$16,178	\$15,338
From \$16,178.01 to \$17,858	\$17,018
From \$17,858.01 to \$19,538	\$18,698
From \$19,538.01 to \$21,218	\$20,378

From \$21,218.01 to \$22,898	\$22,058
for amounts in excess of \$22,898	the actual base credit amount

©Earl G. Tucker, Queen's Printer



NEWFOUNDLAND AND LABRADOR REGULATION 58/09

Assessment of Over-Marketing Regulations, 2009
under the
Newfoundland and Labrador Chicken Marketing Scheme
and
Natural Products Marketing Act

(Filed July 15, 2009)

Under the authority of the powers conferred by subparagraph 5(1)(b)(xi) and section 6 of the *Newfoundland and Labrador Chicken Marketing Scheme*, and the *Natural Products Marketing Act*, the Chicken Farmers of Newfoundland and Labrador makes the following regulations.

Dated at St. John's, July 9, 2009.

Ron Walsh, Secretary Manager
Chicken Farmers of Newfoundland and Labrador

REGULATIONS

Analysis

- | | |
|-------------------------------|-----------------------|
| 1. Short title | 4. Payment of charges |
| 2. Definitions | 5. Repeal |
| 3. Over-marketing by producer | |

Short title

1. These regulations may be cited as the *Assessment of Over-Marketing Regulations, 2009*.

Definitions

2. In these regulations

- (a) "A-92" means an 8 week production period from June 21, 2009 to August 15, 2009 inclusive;
- (b) "A-93" means an 8 week production period from August 16, 2009 to October 10, 2009 inclusive;
- (c) "audit period" means 2 consecutive production periods, beginning with periods A-92 and A-93, and every subsequent consecutive 2 production periods after that;
- (d) "contract grower" means a person who enters into an agreement with a producer who holds a production licence to raise and grow chicken for marketing to that production licence holder;
- (e) "production licence" means a licence issued by the commodity board to a producer with the assent of the minister authorizing the producer to engage in the raising and growing of a specified amount of quota in the province for commercial use, or to enter into an agreement with a contract grower to produce the same; and
- (f) "production period" means a period during which chicken produced in the province is authorized to be marketed.

Over-marketing by producer

3. A producer who markets in excess of 102% of the number of kilograms, live weight, of chicken indicated on that producer's production licences for an audit period shall

- (a) in the year immediately following the year of over-marketing have the production quota indicated on that producer's production licences reduced by one kilogram, live weight, for every kilogram of chicken, live weight, over-marketed by that producer in the previous year; and
- (b) in addition to the fees, levies or charges previously imposed under the *Newfoundland and Labrador Chicken Marketing Scheme*, pay to the commodity board
 - (i) a charge of \$0.44 for each kilogram marketed by the producer in the audit period in excess of 102% of the

number of kilograms, live weight, of chicken indicated on that producer's production licences, and

- (ii) an additional charge of \$0.44 for each kilogram marketed by the producer in the audit period in excess of 104% of the number of kilograms, live weight, of chicken indicated on that producer's production licences.

Payment of charges

4. A producer shall pay to the commodity board at its office charges payable by the producer under paragraph 3(b) not later than March 15 in the year immediately following the year of over-marketing.

Repeal

5. The *Assessment of Over-Marketing Regulations, Consolidated Newfoundland and Labrador Regulation 1171/96*, are repealed.

©Earl G. Tucker, Queen's Printer



**NEWFOUNDLAND AND LABRADOR
REGULATION 59/09**

Lawn Islands Archipelago Provisional Ecological Reserve Order
under the
Wilderness and Ecological Reserve Act
(O.C. 2009-203)

(Filed July 15, 2009)

Under the authority of subsection 14(1) of the *Wilderness and Ecological Reserves Act*, the Lieutenant-Governor in Council makes the following Order.

Dated at St. John's, July 6, 2009.

Sandra Barnes
Deputy Clerk of the Executive Council

ORDER

Analysis

- | | |
|------------------|----------|
| 1. Short title | Schedule |
| 2. Area included | |

Short title

1. These regulations may be cited as the Lawn Islands Archipelago Provisional Ecological Reserve Order.

Area included

2. The Lawn Islands Archipelago Provisional Ecological Reserve is established and the area included for the purpose of protecting a

unique assemblage of seabirds, primarily the Manx Shearwater, is set out in the schedule.

Schedule

All that piece or parcels of land and territorial waters known as Lawn Islands and Colombier Islands, situated in the province in the electoral district of Grand Bank and being more particularly described as follows:

Middle Island having coordinates of north 5,191,575 metres and east 605,425 metres;

Offer Island having coordinates of north 5,190,300 metres and east 604,980 metres;

And also two islands collectively known as Colombier Islands, the first having coordinates of north 5,194,003 metres and east 608,669 metres and the second having coordinates of north 5,193,757 metres and east 608,398 metres;

Together also with any other islands or shoals lying within a radius of 500 metres of the above described lands.

All coordinates shown refer to Zone 21 of the Universal Transverse Mercator Projection, NAD 83.

©Earl G. Tucker, Queen's Printer



NEWFOUNDLAND AND LABRADOR REGULATION 60/09

Seabird Ecological Reserve Regulations (Amendment)
under the
Wilderness and Ecological Reserves Act
(O.C. 2009-204)

(Filed July 15, 2009)

Under the authority of sections 25 and 29 of the *Wilderness and Ecological Reserves Act*, the Lieutenant-Governor in Council makes the following regulations.

Dated at St. John's, July 6, 2009.

Sandra Barnes
Deputy Clerk of the Executive Council

REGULATIONS

Analysis

- | | |
|--|----------------------------|
| 1. S.4.1 Added
Migratory game bird hunting
permitted | 3. S.10 Amdt.
Exception |
| 2. S.8 Amdt.
Domestic animal | 4. Sch. Amdt. |

NLR 66/97
as amended

1. The *Seabird Ecological Reserve Regulations* are amended by adding immediately after section 4 the following:

Migratory game
bird hunting permit-
ted

4.1 Within the Lawn Islands Archipelago Provisional Ecological Reserve migratory game bird hunting, in accordance with a permit or license issued under the *Wild Life Act* or the *Migratory Birds Convention Act* (Canada), is permitted.

2. Section 8 of the regulations is amended by adding immediately after subsection (3) the following:

(4) The grazing of domestic animals is permitted within the Lawn Islands Archipelago Provisional Ecological Reserve.

3. Section 10 of the regulations is amended by adding immediately after subsection (9) the following:

(10) Within the Lawn Islands Archipelago Provisional Ecological Reserve any person engaged in migratory game bird hunting in accordance with section 4.1 is exempt from paragraphs 5(d) and (f) to the extent that it is necessary for the proper conduct of this activity.

4. The Schedule to the regulations is amended by adding immediately after the second Seabird Ecological Reserve listed the following:

2.1 Lawn Islands Archipelago Provisional Ecological Reserve.

©Earl G. Tucker, Queen's Printer



**NEWFOUNDLAND AND LABRADOR
REGULATION 61/09**

Main River Special Management Area
under the
Lands Act
(O.C. 2009-212)

(Filed July 15, 2009)

Under the authority of subsection 57(1) of the *Lands Act*, the Lieutenant-Governor in Council declares the area described below as the *Main River Special Management Area*.

Dated at St. John's, July 15, 2009.

Sandra Barnes
Deputy Clerk of the Executive Council

MAIN RIVER SPECIAL MANAGEMENT AREA

All parcels of land are located at Main River, in the Provincial Electoral Districts of St. Barbe and Humber Valley, in the province of Newfoundland and Labrador.

All coordinates are based on the UTM projection, Zone 21, with the central meridian of 57° west longitude, North American Datum 1983.

The following parcels of land contain a total area of 49.13 km², more or less.

Parcel 1

Beginning at a point having map scaled coordinates 5 527 327 metres north, 472 365 metres east;

Then heading in a general southwesterly direction, following the eastern bank of a small river, while maintaining a distance of 20 metres from the coastline, for a distance of 430 metres, more or less, to a point having map scaled coordinates 5 527 080 metres north, 472 040 metres east;

Then heading in a generally southeasterly direction for a distance of 430 metres more or less, to a point having map scaled coordinates 5 526 902 metres north, 472 429 metres east;

Then heading in a generally northeasterly direction, following the western bank of a small river, while maintaining a distance of 20 metres from the coastline, for a distance of 570 metres, more or less, to a point having map scaled coordinates 5 527 365 metres north, 472 656 metres east;

Then heading in a generally westerly direction along the southern bank of the Main River, while maintaining a distance of 20 metres from the coastline, for a distance of 350 metres, more or less, back to the point of beginning, the above described parcel of land containing an area of 0.143 km².

Parcel 2

Beginning at a point with map scaled coordinates 5 523 518 metres north, 479 440 metres east;

Then heading in a general south southeasterly direction, along the boundary of the Main River Waterway Provincial Park, for a distance of 2348 metres, more or less, to a point having map scaled coordinates 5 521 838 metres north, 481 081 metres east;

Then heading in a general southerly direction for a distance of 1564 metres, more or less, to a point having map scaled coordinates 5 520 307 metres north, 481 448 metres east;

Then heading in a general northwesterly direction for a distance of 2850 metres, more or less, to a point having map scaled coordinates 5 522 190 metres north, 479 337 metres east;

Then heading in a general northerly direction to the point of beginning, the above described piece or parcel of land containing an area of 2.45 km².

Parcel 3

Beginning at a point with map scaled coordinates 5 519 696 metres north, 481 594 metres east;

Then heading in a general southeasterly direction for a distance of 804 metres, more or less, to a point having map scaled coordinates 5 519 508 metres north, 482 373 metres east;

Then heading in a general southerly direction for a distance of 594 metres, more or less, to a point having map scaled coordinates 5 518 923 metres north, 482 262 metres east;

Then heading in a general easterly direction for a distance of 441 metres, more or less, to a point having map scaled coordinates 5 518 991 metres north, 482 696 metres east;

Then heading in a general southerly direction for a distance of 3565 metres, more or less, to a point having map scaled coordinates 5 515 471 metres north, 483 265 metres east;

Then heading in a general westerly direction for a distance of 1119 metres, more or less, to a point having map scaled coordinates 5 515 663 metres north, 482 161 metres east;

Then heading in a general northerly direction for a distance of 4065 metres, more or less, to the point of beginning, the above described piece or parcel of land containing an area of 3.95 km².

Parcel 4

Beginning at a point with map scaled coordinates 5 515 339 metres north, 484 043 metres east;

Then heading in a general northeasterly direction for a distance of 1231 metres, more or less, to a point having map scaled coordinates 5 515 949 metres north, 485 115 metres east;

Then heading in a general northeasterly direction for a distance of 1357 metres, more or less, to a point having map scaled coordinates 5 516 863 metres north, 486 121 metres east;

Then heading in a general southeasterly direction for a distance of 1045 metres, more or less, to a point having map scaled coordinates 5 516 178 metres north, 486 906 metres east;

Then heading in a general southerly direction for a distance of 1038 metres, more or less, to a point having map scaled coordinates 5 515 169 metres north, 486 671 metres east;

Then heading in a general southeasterly direction for a distance of 626 metres, more or less, to a point having map scaled coordinates 5 514 684 metres north, 487 075 metres east;

Then heading in a general southerly direction for a distance of 1180 metres, more or less, to a point having map scaled coordinates 5 513 509 metres north, 487 182 metres east;

Then heading in a general westerly direction for a distance of 949 metres, more or less, to a point having map scaled coordinates 5 513 609 metres north, 486 238 metres east;

Then heading in a general northwesterly direction for a distance of 2181 metres, more or less, to a point having map scaled coordinates 5 515 215 metres north, 484 765 metres east;

Then heading in a general westerly direction for a distance of 732 metres, more or less, to the point of beginning, the above described piece or parcel of land containing an area of 5.04 km².

Parcel 5

Beginning at a point with map scaled coordinates 5 513 180 metres north, 490 113 metres east;

Then heading in a general northeasterly direction for a distance of 1079 metres, more or less, to a point having map scaled coordinates 5 514 152 metres north, 490 575 metres east;

Then heading in a general easterly direction for a distance of 1071 metres, more or less, to a point having map scaled coordinates 5 514 378 metres north, 491 621 metres east;

Then along the northerly limit of the Kruger woods road 5 metres from the centreline for a distance of 1981 metres, more or less, to a point having map scaled coordinates 5 515 222 metres north, 493 201 metres east;

Then heading in a general northerly direction for a distance of 853 metres, more or less, to a point having map scaled coordinates 5 516 020 metres north, 493 505 metres east;

Then heading in a general southeasterly direction for a distance of 539 metres, more or less, to a point having map scaled coordinates 5 515 747 metres north, 493 970 metres east;

Then heading in a general southerly direction for a distance of 731 metres, more or less, to a point having map scaled coordinates 5 515 016 metres north, 493 955 metres east;

Then heading in a general southeasterly direction for a distance of 483 metres, more or less, to a point having map scaled coordinates 5 514 633 metres north, 494 246 metres east;

Then heading in a general southerly direction for a distance of 801 metres, more or less, to a point having map scaled coordinates 5 513 838 metres north, 494 111 metres east;

Then heading in a general southwesterly direction for a distance of 607 metres, more or less, to a point having map scaled coordinates of 5 513 357 metres north, 493 736 metres east;

Then heading in a general southeasterly direction for a distance of 1373 metres, more or less, to a point having map scaled coordinates 5 512 095 metres north, 494 280 metres east;

Then heading in a general easterly direction for a distance of 611 metres, more or less, to a point having map scaled coordinates 5 512 111 metres north, 494 890 metres east;

Then heading in a general southwesterly direction for a distance of 896 metres, more or less, to a point having map scaled coordinates 5 511 273 metres north, 494 574 metres east;

Then heading in a general southeasterly direction for a distance of 834 metres, more or less, to a point having map scaled coordinates 5 510 611 metres north, 495 077 metres east;

Then heading in a westerly direction for a distance of 473 metres, more or less, to a point having map scaled coordinates 5 510 441 metres north, 494 636 metres east;

Then heading in a general northwesterly direction for a distance of 2436 metres, more or less, to a point having map scaled coordinates 5 512 367 metres north, 493 135 metres east;

Then heading in a general northerly direction for a distance of 1732 metres, more or less, to a point having map scaled coordinates 5 514 066 metres north, 492 756 metres east;

Then heading in a northerly direction for a distance of 664 metres, more or less, to a point having map scaled coordinates 5 514 727 metres north, 492 767 metres east;

Then heading in a general southeasterly direction for a distance of 2551 metres, more or less, to a point having map scaled coordinates 5 513 091 metres north, 490 813 metres east;

Then heading in a general westerly direction for a distance of 704 metres, more or less, to the point of beginning;

Reserving out of the above described parcel of land, the Kruger woods road, 5 metres on both sides of the centreline, abutted and bounded as follows, that is to say; beginning at a point having map scaled coordinates 5 515 801 metres north, 493 880 metres east;

Then heading in a general southwesterly direction for a distance of 4640 metres, more or less, to a point having map scaled coordinates 5

513 600 metres north, 490 453 metres east, the above described parcel of land containing an area of 0.05 km².

The above described parcel or piece of land, Parcel 5, contains an area of 6.95km².

Parcel 6

Beginning at a point having map scaled coordinates 5 510 294 metres north, 495 179 metres east;

Then heading in a general northeasterly direction for a distance of 402 metres, more or less, to a point having map scaled coordinates 5 510 464 metres north, 495 541 metres east;

Then heading in a general southeasterly direction for a distance of 493 metres, more or less, to a point having map scaled coordinates 5 510 295 metres north, 496 003 metres east;

Then heading in a general northeasterly direction for a distance of 506 metres, more or less, to a point having map scaled coordinates 5 510 535 metres north, 496 450 metres east;

Then heading in a general southeasterly direction for a distance of 282 metres, more or less, to a point having 5 510 326 metres north, 496 638 metres east;

Then heading in a general southeasterly direction for a distance of 612 metres, more or less, to a point having map scaled coordinates 5 510 135 metres north, 497 223 metres east;

Then heading in a general easterly direction for a distance of 711 metres, more or less, to a point having map scaled coordinates 5 510 185 metres north, 497 932 metres east;

Then heading in a general northeasterly direction for a distance of 899 metres, more or less, to a point having map scaled coordinates 5 510 601 metres north, 498 728 metres east;

Then heading in a general southerly direction for a distance of 349 metres, more or less, to a point having map scaled coordinates 5 510 297 metres north, 498 899 metres east;

Then heading in a general easterly direction for a distance of 204 metres, more or less, to a point having map scaled coordinates 5 510 320 metres north, 499 101 metres east;

Then heading in a general northerly direction for a distance of 457 metres, more or less, to a point having map scaled coordinates 5 510 767 metres north, 499 011 metres east;

Then heading in a general easterly direction for a distance of 453 metres, more or less, to a point having map scaled coordinates 5 510 774 metres north, 499 462 metres east;

Then heading in a general northeasterly direction for a distance of 384 metres, more or less, to a point having map scaled coordinates 5 511 092 metres north, 499 682 metres east;

Then heading in a general northerly direction for a distance of 546 metres, more or less, to a point having map scaled coordinates 5 511 636 metres north, 499 643 metres east;

Then heading in a general northeasterly direction for a distance of 471 metres, more or less, to a point having map scaled coordinates 5 511 848 metres north, 500 064 metres east;

Then heading in a general northerly direction for a distance of 494 metres, more or less, to a point having map scaled coordinates 5 512 330 metres north, 500 165 metres east;

Then heading in a general southeasterly direction for a distance of 605 metres, more or less, to a point having map scaled coordinates 5 512 091 metres north, 500 720 metres east;

Then heading in a general easterly direction for a distance of 998 metres, more or less, to a point having map scaled coordinates 5 512 258 metres north, 501 704 metres east;

Then heading in a general northeasterly direction for a distance of 350 metres, more or less, to a point having map scaled coordinates 5 512 382 metres north, 502 033 metres east;

Then heading in a general southeasterly direction for a distance of 460 metres, more or less, to a point having map scaled coordinates 5 512 039 metres north, 502 339 metres east;

Then heading in a general southwesterly direction for a distance of 1612 metres, more or less, to a point having map scaled coordinates 5 511 419 metres north, 500 853 metres east;

Then heading in a general southwesterly direction for a distance of 3251 metres, more or less, to a point having map scaled coordinates 5 509 481 metres north, 498 245 metres east;

Then heading in a general northwesterly direction for a distance of 3163 metres, more or less, to the point of beginning, the above described piece or parcel of land containing an area of 4.08 km².

Parcel 7

Beginning at a point with map scaled coordinates 5 514 827 metres north, 501 644 metres east;

Then heading in a general southeasterly direction for a distance of 903 metres, more or less, to a point having map scaled coordinates 5 514 340 metres north, 502 404 metres east;

Then heading in a general southwesterly direction for a distance of 1298 metres, more or less, to a point having map scaled coordinates 5 513 321 metres north, 501 595 metres east;

Then heading in a general westerly direction for a distance of 1331 metres, more or less to a point having map scaled coordinates 5 513 404 metres north, 500 265 metres east;

Then heading in a general northwesterly direction for a distance of 642 metres, more or less, to a point having map scaled coordinates 5 513 787 metres north, 499 751 metres east;

Then heading in a general southwesterly direction for a distance of 1170 metres, more or less, to a point having map scaled coordinates 5 512 961 metres north, 498 917 metres east;

Then heading in a general southeasterly direction for a distance of 714 metres, more or less, to a point having map scaled coordinates 5 512 733 metres north, 499 593 metres east;

Then heading in a general southwesterly direction for a distance of 2122 metres, more or less, to a point having map scaled coordinates 5 511 222 metres north, 498 100 metres east;

Then heading in a general southwesterly direction for a distance of 768 metres, more or less, to a point having map scaled coordinates 5 510 976 metres north, 497 370 metres east;

Then heading in a general northwesterly direction for a distance of 586 metres, more or less, to a point having map scaled coordinates 5 511 282 metres north, 496 868 metres east;

Then heading in a general westerly direction for a distance of 1223 metres, more or less, to a point having map scaled coordinates 5 511 221 metres north, 495 645 metres east;

Then heading in a general northwesterly direction for a distance of 267 metres, more or less, to a point having map scaled coordinates 5 511 320 metres north, 495 396 metres east;

Then heading in a general northerly direction for a distance of 553 metres, more or less, to a point having map scaled coordinates 5 511 820 metres north, 495 634 metres east;

Then heading in a general northerly direction for a distance 656 metres, more or less, to a point having map scaled coordinates 5 512 477 metres north, 495 615 metres east;

Then heading in a general northwesterly direction for a distance of 1441 metres, more or less, to a point having map scaled coordinates 5 513 605 metres north, 494 718 metres east;

Then heading in a general northeasterly direction for a distance of 487 metres, more or less, to a point having map scaled coordinates 5 514 036 metres north, 494 949 metres east;

Then heading in a general northerly direction for a distance of 452 metres, more or less, to a point having map scaled coordinates 5 514 485 metres north, 494 902 metres east;

Then heading in a general northeasterly direction for a distance of 517 metres, more or less, to a point having map scaled coordinates 5 514 697 metres north, 495 373 metres east;

Then heading in a general northeasterly direction for a distance of 686 metres, more or less, to a point having map scaled coordinates 5 515 284 metres north, 495 724 metres east;

Then heading in a general northerly direction for a distance of 1550 metres, more or less, to a point having map scaled coordinates 5 516 805 metres north, 495 423 metres east;

Then heading in a general northeasterly direction for a distance of 592 metres, more or less, to a point having map scaled coordinates 5 517 134 metres north, 495 914 metres east;

Then heading in a general northerly direction for a distance of 944 metres, more or less, to a point having map scaled coordinates 5 518 057 metres north, 496 121 metres east;

Then heading in a general southwesterly direction for a distance of 436 metres, more or less, to a point having map scaled coordinates 5 517 790 metres north, 496 468 metres east;

Then heading in a general southeasterly direction for a distance of 3050 metres, more or less, to a point having map scaled coordinates 5 515 152 metres north, 497 974 metres east;

Then heading in a general southwesterly direction for a distance of 2363 metres, more or less, to a point having map scaled coordinates 5 513 042 metres north, 496 909 metres east;

Then heading in a general easterly direction for a distance of 1368 metres, more or less, to a point having map scaled coordinates 5 513 121 metres north, 498 264 metres east;

Then heading in a general northeasterly direction for a distance of 3789 metres, more or less, to the point of beginning;

Reserving out of the above described parcel of land, the Kruger woods road, 5 metres on both sides of the centreline, abutted and bounded as follows, that is to say; beginning at a point with map scaled coordinates 5 516 034 metres north, 497 472 metres east;

Then heading in a general westerly direction for a distance of 1934 metres, more or less, to a point having map scaled coordinates 5 515

916 metres north, 495 600 metres east; the above described parcel of land containing an area of 0.02 km².

The above described piece or parcel of land, Parcel 7, contains an area of 18.10 km².

Parcel 8

Beginning at a point having map scaled coordinates 5 518 339 metres north, 495 735 metres east;

Then heading in a general southwesterly direction for a distance of 728 metres, more or less, to a point having map scaled coordinates 5 518 011 metres north, 495 082 metres east;

Then heading in a general northwesterly direction for a distance of 1924 metres, more or less, to a point having map scaled coordinates 5 519 636 metres north, 494 040 metres east;

Then heading in a general southeasterly direction for a distance of 2136 metres, more or less, to the point of beginning, the above described piece or parcel of land containing an area of 0.70 km².

Parcel 9

Beginning at a point having map scaled coordinates 5 520 056 metres north, 493 499 metres east;

Then heading in a general southwesterly direction for a distance of 1076 metres, more or less, to a point having map scaled coordinates 5 519 382 metres north, 492 660 metres east;

Then heading in a general westerly direction for a distance of 1716 metres, more or less, to a point having map scaled coordinates 5 519 117 metres north, 490 961 metres east;

Then heading in a general northeasterly direction for a distance of 1102 metres, more or less, to a point having map scaled coordinates 5 520 118 metres north, 491 419 metres east;

Then heading in a general northwesterly direction for a distance of 3061 metres, more or less, to a point having map scaled coordinates 5 521 619 metres north, 488 753 metres east;

Then heading in a general southeasterly direction for a distance of 2104 metres, more or less, to a point having map scaled coordinates 5 521 090 metres north, 490 785 metres east;

Then heading in a general southeasterly direction for a distance of 1283 metres, more or less, to a point having map scaled coordinates 5 520 525 metres north, 491 935 metres east;

Then heading in a general southeasterly direction for a distance of 1544 metres, more or less, to a point having map scaled coordinates 5 520 111 metres north, 493 427 metres east;

Then heading in a general southeasterly direction for a distance of 90 metres, more or less, to the point of beginning, the above described piece or parcel of land containing an area of 3.18 km².

Parcel 10

Beginning at a point having map scaled coordinates 5 522 363 metres north, 485 363 metres east;

Then heading in a general southerly direction for a distance of 514 metres, more or less, to a point having map scaled coordinates 5 521 882 metres north, 485 191 metres east;

Then heading in a general northwesterly direction for a distance of 1065 metres, more or less, to a point having map scaled coordinates 5 522 208 metres north, 484 179 metres east;

Then heading in a general northwesterly direction for a distance of 2765 metres, more or less, to a point having map scaled coordinates 5 524 160 metres north, 482 217 metres east;

Then heading in a general northeasterly direction for a distance of 1992 metres, more or less, to a point having map scaled coordinates 5 525 868 metres north, 483 244 metres east;

Then heading in a general southeasterly direction for a distance of 936 metres, more or less, to a point having map scaled coordinates 5 525 406 metres north, 484 054 metres east;

Then heading in a general southerly direction for a distance of 1338 metres, more or less, to a point having map scaled coordinates 5 524 079 metres north, 483 849 metres east;

Then heading in a general southeasterly direction for a distance of 1812 metres, more or less, to a point having map scaled coordinates 5 522 508 metres north, 484 766 metres east;

Then heading in a general easterly direction for a distance of 611 metres, more or less, to the point of beginning, the above described piece or parcel of land containing an area of 4.54 km².

©Earl G. Tucker, Queen's Printer



**NEWFOUNDLAND AND LABRADOR
REGULATION 62/09**

Main River Special Management Area Regulations
under the
Lands Act
(O.C. 2009-213)

(Filed July 15, 2009)

Under the authority of sections 58, 59 and 60 of the *Lands Act*, the Lieutenant-Governor in Council makes the following Regulations.

Dated at St. John's, July 15, 2009.

Sandra Barnes
Deputy Clerk of the Executive Council

REGULATIONS

Analysis

- | | |
|----------------------|-----------------------------------|
| 1. Short title | 7. Mining |
| 2. Definitions | 8. Motor vehicles prohibited |
| 3. Application | 9. ATV trails & use |
| 4. Purpose | 10. Scientific research |
| 5. Land restrictions | 11. Hunting and fishing permitted |
| 6. Forestry | |

Short title

1. These Regulations may be cited as the *Main River Special Management Area Regulations*.

Definitions

2. In these regulations

- (a) "special management area" means the Main River Special Management Area;
- (b) "structure" means an artificial construction intended to be permanent or semi-permanent in nature and includes a
 - (i) house,
 - (ii) cottage,
 - (iii) cabin,
 - (iv) wharf,
 - (v) dock,
 - (vi) boathouse,
 - (vii) slipway,
 - (viii) trailer,
 - (ix) mobile home,
 - (x) tent,
 - (xi) tent platform, and
 - (xii) recreational vehicle used for any purpose, including a motor vehicle.

Application **3.** These regulations apply throughout the special management area.

Purpose **4.** Maintenance of the ecological and viewshed integrity of the special management area so as to maintain the natural and recreational values of the Main River Canadian Heritage River shall be the first priority in the consideration of any use of the special management area.

Land restrictions **5.** (1) Crown lands and public land, as defined in the *Lands Act*, shall not be conveyed, leased or licensed within the special management area without the prior consent of the minister responsible for the special management area.

(2) Where the minister responsible for a special management area is the minister responsible for the *Lands Act*, the consent of the minister personally is required for a conveyance, lease or licence of public land located within the special management area.

(3) A structure shall not be constructed within the special management area without the prior consent of the minister responsible for the special management area.

Forestry

6. (1) Forest harvesting is permitted in accordance with the relevant forest management plan approved by the minister responsible for forest resources, but clear-cutting is prohibited within the special management area.

(2) The construction of forest access roads within the special management area shall be in accordance with the relevant forest management plan approved by the minister responsible for forest resources.

(3) Forest access roads within the special management area shall be decommissioned and rehabilitated on a sequential basis as the roads cease to be required for the harvesting of timber, in accordance with the relevant forest management plan approved by the minister responsible for forest resources.

Mining

7. Mining and mineral exploration is prohibited within the special management area.

Motor vehicles prohibited

8. A person shall not operate a motor vehicle in the special management area unless

- (a) that person is an authorized government employee in the course of his or her duties;
- (b) the motor vehicle is lawfully being operated on a provincial highway that intersects the special management area;
- (c) the motor vehicle is lawfully being operated on a roadway or other highway that has been designated by the minister for that purpose;
- (d) the motor vehicle is operated in a part of the special management area designated by the minister for that purpose; or

(e) that person operates a motor vehicle under the authority of a written permit from the minister.

ATV trails & use

9. (1) A person shall not operate an all-terrain vehicle as defined in the *Motorized Snow Vehicle and All-Terrain Vehicles Act* within the special management area except:

(a) an authorized government employee in the course of his or her duties;

(b) a person who has obtained a written permit from the minister.

(2) Notwithstanding subsection (1), a person may operate a motorized snow vehicle, commonly known as a snowmobile, within the special management area.

Scientific research

10. (1) A person shall not conduct scientific research in the special management area unless he or she has obtained a written permit to do so from the minister.

(2) Permits may be obtained from the minister upon submission of a written request fully outlining and detailing the research project, and subject to the terms and conditions that the minister may determine.

Hunting and fishing permitted

11. (1) Hunting in accordance with the *Wild Life Act* or the *Migratory Birds Convention Act* (Canada) or regulations made under these Acts is permitted within the special management area.

(2) Fishing or angling in accordance with the *Wild Life Act* or the *Fisheries Act* (Canada) or the regulations made under those Acts, is permitted within the special management area.

©Earl G. Tucker, Queen's Printer



**NEWFOUNDLAND AND LABRADOR
REGULATION 63/09**

Mineral Regulations (Amendment)
under the
Mineral Act

(Filed July 15, 2009)

Under the authority of section 41.1 of the *Mineral Act*, I make the following Regulations.

Dated at St. John's, July 15, 2009.

Kathy Dunderdale
Minister of Natural Resources

REGULATIONS

Analysis

1. Sch A Amdt.

CNLR 1143/96
as amended

1. Paragraph III of Schedule A of the *Mineral Regulations* is repealed and the following substituted:

- III. All that piece or parcel of land and land under water, known as the Main River Special Management Area described as follows:

All parcels of land are located at Main River, in the Provincial Electoral Districts of St. Barbe and Humber Valley, in the province of Newfoundland and Labrador.

All coordinates are based on the UTM projection, Zone 21, with the central meridian of 57 degrees West longitude, North American Datum 1983.

The following parcels of land contain a total area of 49.13 km², more or less.

Parcel 1

Beginning at a point having map scaled coordinates 5 527 327 metres north, 472 365 metres east;

Then heading in a general southwesterly direction, following the eastern bank of a small river, while maintaining a distance of 20 metres from the coastline, for a distance of 430 metres, more or less, to a point having map scaled coordinates 5 527 080 metres north, 472 040 metres east;

Then heading in a generally southeasterly direction for a distance of 430 metres more or less, to a point having map scaled coordinates 5 526 902 metres north, 472 429 metres east;

Then heading in a generally northeasterly direction, following the western bank of a small river, while maintaining a distance of 20 metres from the coastline, for a distance of 570 metres, more or less, to a point having map scaled coordinates 5 527 365 metres north, 472 656 metres east;

Then heading in a generally westerly direction along the southern bank of the Main River, while maintaining a distance of 20 metres from the coastline, for a distance of 350 metres, more or less, back to the point of beginning, the above described parcel of land containing an area of 0.143 km².

Parcel 2

Beginning at a point with map scaled coordinates 5 523 518 metres north, 479 440 metres east;

Then heading in a general south southeasterly direction, along the boundary of the Main River Waterway Provincial Park, for a distance of 2348 metres, more or less, to a point having map scaled coordinates 5 521 838 metres north, 481 081 metres east;

Then heading in a general southerly direction for a distance of 1564 metres, more or less, to a point having map scaled coordinates 5 520 307 metres north, 481 448 metres east;

Then heading in a general northwesterly direction for a distance of 2850 metres, more or less, to a point having map scaled coordinates 5 522 190 metres north, 479 337 metres east;

Then heading in a general northerly direction to the point of beginning, the above described piece or parcel of land containing an area of 2.45 km².

Parcel 3

Beginning at a point with map scaled coordinates 5 519 696 metres north, 481 594 metres east;

Then heading in a general southeasterly direction for a distance of 804 metres, more or less, to a point having map scaled coordinates 5 519 508 metres north, 482 373 metres east;

Then heading in a general southerly direction for a distance of 594 metres, more or less, to a point having map scaled coordinates 5 518 923 metres north, 482 262 metres east;

Then heading in a general easterly direction for a distance of 441 metres, more or less, to a point having map scaled coordinates 5 518 991 metres north, 482 696 metres east;

Then heading in a general southerly direction for a distance of 3565 metres, more or less, to a point having map scaled coordinates 5 515 471 metres north, 483 265 metres east;

Then heading in a general westerly direction for a distance of 1119 metres, more or less, to a point having map scaled coordinates 5 515 663 metres north, 482 161 metres east;

Then heading in a general northerly direction for a distance of 4065 metres, more or less, to the point of beginning, the above described piece or parcel of land containing an area of 3.95 km².

Parcel 4

Beginning at a point with map scaled coordinates 5 515 339 metres north, 484 043 metres east;

Then heading in a general northeasterly direction for a distance of 1231 metres, more or less, to a point having map scaled coordinates 5 515 949 metres north, 485 115 metres east;

Then heading in a general northeasterly direction for a distance of 1357 metres, more or less, to a point having map scaled coordinates 5 516 863 metres north, 486 121 metres east;

Then heading in a general southeasterly direction for a distance of 1045 metres, more or less, to a point having map scaled coordinates 5 516 178 metres north, 486 906 metres east;

Then heading in a general southerly direction for a distance of 1038 metres, more or less, to a point having map scaled coordinates 5 515 169 metres north, 486 671 metres east;

Then heading in a general southeasterly direction for a distance of 626 metres, more or less, to a point having map scaled coordinates 5 514 684 metres north, 487 075 metres east;

Then heading in a general southerly direction for a distance of 1180 metres, more or less, to a point having map scaled coordinates 5 513 509 metres north, 487 182 metres east;

Then heading in a general westerly direction for a distance of 949 metres, more or less, to a point having map scaled coordinates 5 513 609 metres north, 486 238 metres east;

Then heading in a general northwesterly direction for a distance of 2181 metres, more or less, to a point having map scaled coordinates 5 515 215 metres north, 484 765 metres east;

Then heading in a general westerly direction for a distance of 732 metres, more or less, to the point of beginning, the above described piece or parcel of land containing an area of 5.04 km².

Parcel 5

Beginning at a point with map scaled coordinates 5 513 180 metres north, 490 113 metres east;

Then heading in a general northeasterly direction for a distance of 1079 metres, more or less, to a point having map scaled coordinates 5 514 152 metres north, 490 575 metres east;

Then heading in a general easterly direction for a distance of 1071 metres, more or less, to a point having map scaled coordinates 5 514 378 metres north, 491 621 metres east;

Then along the northerly limit of the Kruger woods road 5 metres from the centreline for a distance of 1981 metres, more or less, to a point having map scaled coordinates 5 515 222 metres north, 493 201 metres east;

Then heading in a general northerly direction for a distance of 853 metres, more or less, to a point having map scaled coordinates 5 516 020 metres north, 493 505 metres east;

Then heading in a general southeasterly direction for a distance of 539 metres, more or less, to a point having map scaled coordinates 5 515 747 metres north, 493 970 metres east;

Then heading in a general southerly direction for a distance of 731 metres, more or less, to a point having map scaled coordinates 5 515 016 metres north, 493 955 metres east;

Then heading in a general southeasterly direction for a distance of 483 metres, more or less, to a point having map scaled coordinates 5 514 633 metres north, 494 246 metres east;

Then heading in a general southerly direction for a distance of 801 metres, more or less, to a point having map scaled coordinates 5 513 838 metres north, 494 111 metres east;

Then heading in a general southwesterly direction for a distance of 607 metres, more or less, to a point having map scaled coordinates of 5 513 357 metres north, 493 736 metres east;

Then heading in a general southeasterly direction for a distance of 1373 metres, more or less, to a point having map scaled coordinates 5 512 095 metres north, 494 280 metres east;

Then heading in a general easterly direction for a distance of 611 metres, more or less, to a point having map scaled coordinates 5 512 111 metres north, 494 890 metres east;

Then heading in a general southwesterly direction for a distance of 896 metres, more or less, to a point having map scaled coordinates 5 511 273 metres north, 494 574 metres east;

Then heading in a general southeasterly direction for a distance of 834 metres, more or less, to a point having map scaled coordinates 5 510 611 metres north, 495 077 metres east;

Then heading in a westerly direction for a distance of 473 metres, more or less, to a point having map scaled coordinates 5 510 441 metres north, 494 636 metres east;

Then heading in a general northwesterly direction for a distance of 2436 metres, more or less, to a point having map

scaled coordinates 5 512 367 metres north, 493 135 metres east;

Then heading in a general northerly direction for a distance of 1732 metres, more or less, to a point having map scaled coordinates 5 514 066 metres north, 492 756 metres east;

Then heading in a northerly direction for a distance of 664 metres, more or less, to a point having map scaled coordinates 5 514 727 metres north, 492 767 metres east;

Then heading in a general southeasterly direction for a distance of 2551 metres, more or less, to a point having map scaled coordinates 5 513 091 metres north, 490 813 metres east;

Then heading in a general westerly direction for a distance of 704 metres, more or less, to a the point of beginning;

Reserving out of the above described parcel of land, the Kruger woods road, 5 metres on both sides of the centreline, abutted and bounded as follows, that is to say; beginning at a point having map scaled coordinates 5 515 801 metres north, 493 880 metres east;

Then heading in a general southwesterly direction for a distance of 4640 metres, more or less, to a point having map scaled coordinates 5 513 600 metres north, 490 453 metres east, the above described parcel of land containing an area of 0.05 km².

The above described parcel or piece of land, Parcel 5, contains an area of 6.95km².

Parcel 6

Beginning at a point having map scaled coordinates 5 510 294 metres north, 495 179 metres east;

Then heading in a general northeasterly direction for a distance of 402 metres, more or less, to a point having map scaled coordinates 5 510 464 metres north, 495 541 metres east;

Then heading in a general southeasterly direction for a distance of 493 metres, more or less, to a point having map scaled coordinates 5 510 295 metres north, 496 003 metres east;

Then heading in a general northeasterly direction for a distance of 506 metres, more or less, to a point having map scaled coordinates 5 510 535 metres north, 496 450 metres east;

Then heading in a general southeasterly direction for a distance of 282 metres, more or less, to a point having 5 510 326 metres north, 496 638 metres east;

Then heading in a general southeasterly direction for a distance of 612 metres, more or less, to a point having map scaled coordinates 5 510 135 metres north, 497 223 metres east;

Then heading in a general easterly direction for a distance of 711 metres, more or less, to a point having map scaled coordinates 5 510 185 metres north, 497 932 metres east;

Then heading in a general northeasterly direction for a distance of 899 metres, more or less, to a point having map scaled coordinates 5 510 601 metres north, 498 728 metres east;

Then heading in a general southerly direction for a distance of 349 metres, more or less, to a point having map scaled coordinates 5 510 297 metres north, 498 899 metres east;

Then heading in a general easterly direction for a distance of 204 metres, more or less, to a point having map scaled coordinates 5 510 320 metres north, 499 101 metres east;

Then heading in a general northerly direction for a distance of 457 metres, more or less, to a point having map scaled coordinates 5 510 767 metres north, 499 011 metres east;

Then heading in a general easterly direction for a distance of 453 metres, more or less, to a point having map scaled coordinates 5 510 774 metres north, 499 462 metres east;

Then heading in a general northeasterly direction for a distance of 384 metres, more or less, to a point having map scaled coordinates 5 511 092 metres north, 499 682 metres east;

Then heading in a general northerly direction for a distance of 546 metres, more or less, to a point having map scaled coordinates 5 511 636 metres north, 499 643 metres east;

Then heading in a general northeasterly direction for a distance of 471 metres, more or less, to a point having map scaled coordinates 5 511 848 metres north, 500 064 metres east;

Then heading in a general northerly direction for a distance of 494 metres, more or less, to a point having map scaled coordinates 5 512 330 metres north, 500 165 metres east;

Then heading in a general southeasterly direction for a distance of 605 metres, more or less, to a point having map scaled coordinates 5 512 091 metres north, 500 720 metres east;

Then heading in a general easterly direction for a distance of 998 metres, more or less, to a point having map scaled coordinates 5 512 258 metres north, 501 704 metres east;

Then heading in a general northeasterly direction for a distance of 350 metres, more or less, to a point having map scaled coordinates 5 512 382 metres north, 502 033 metres east;

Then heading in a general southeasterly direction for a distance of 460 metres, more or less, to a point having map scaled coordinates 5 512 039 metres north, 502 339 metres east;

Then heading in a general southwesterly direction for a distance of 1612 metres, more or less, to a point having map scaled coordinates 5 511 419 metres north, 500 853 metres east;

Then heading in a general southwesterly direction for a distance of 3251 metres, more or less, to a point having map scaled coordinates 5 509 481 metres north, 498 245 metres east;

Then heading in a general northwesterly direction for a distance of 3163 metres, more or less, to the point of beginning, the above described piece or parcel of land containing an area of 4.08 km².

Parcel 7

Beginning at a point with map scaled coordinates 5 514 827 metres north, 501 644 metres east;

Then heading in a general southeasterly direction for a distance of 903 metres, more or less, to a point having map scaled coordinates 5 514 340 metres north, 502 404 metres east;

Then heading in a general southwesterly direction for a distance of 1298 metres, more or less, to a point having map scaled coordinates 5 513 321 metres north, 501 595 metres east;

Then heading in a general westerly direction for a distance of 1331 metres, more or less to a point having map scaled coordinates 5 513 404 metres north, 500 265 metres east;

Then heading in a general northwesterly direction for a distance of 642 metres, more or less, to a point having map scaled coordinates 5 513 787 metres north, 499 751 metres east;

Then heading in a general southwesterly direction for a distance of 1170 metres, more or less, to a point having map scaled coordinates 5 512 961 metres north, 498 917 metres east;

Then heading in a general southeasterly direction for a distance of 714 metres, more or less, to a point having map scaled coordinates 5 512 733 metres north, 499 593 metres east;

Then heading in a general southwesterly direction for a distance of 2122 metres, more or less, to a point having map scaled coordinates 5 511 222 metres north, 498 100 metres east;

Then heading in a general southwesterly direction for a distance of 768 metres, more or less, to a point having map scaled coordinates 5 510 976 metres north, 497 370 metres east;

Then heading in a general northwesterly direction for a distance of 586 metres, more or less, to a point having map scaled coordinates 5 511 282 metres north, 496 868 metres east;

Then heading in a general westerly direction for a distance of 1223 metres, more or less, to a point having map scaled coordinates 5 511 221 metres north, 495 645 metres east;

Then heading in a general northwesterly direction for a distance of 267 metres, more or less, to a point having map scaled coordinates 5 511 320 metres north, 495 396 metres east;

Then heading in a general northerly direction for a distance of 553 metres, more or less, to a point having map scaled coordinates 5 511 820 metres north, 495 634 metres east;

Then heading in a general northerly direction for a distance of 656 metres, more or less, to a point having map scaled coordinates 5 512 477 metres north, 495 615 metres east;

Then heading in a general northwesterly direction for a distance of 1441 metres, more or less, to a point having map scaled coordinates 5 513 605 metres north, 494 718 metres east;

Then heading in a general northeasterly direction for a distance of 487 metres, more or less, to a point having map scaled coordinates 5 514 036 metres north, 494 949 metres east;

Then heading in a general northerly direction for a distance of 452 metres, more or less, to a point having map scaled coordinates 5 514 485 metres north, 494 902 metres east;

Then heading in a general northeasterly direction for a distance of 517 metres, more or less, to a point having map scaled coordinates 5 514 697 metres north, 495 373 metres east;

Then heading in a general northeasterly direction for a distance of 686 metres, more or less, to a point having map scaled coordinates 5 515 284 metres north, 495 724 metres east;

Then heading in a general northerly direction for a distance of 1550 metres, more or less, to a point having map scaled coordinates 5 516 805 metres north, 495 423 metres east;

Then heading in a general northeasterly direction for a distance of 592 metres, more or less, to a point having map scaled coordinates 5 517 134 metres north, 495 914 metres east;

Then heading in a general northerly direction for a distance of 944 metres, more or less, to a point having map scaled coordinates 5 518 057 metres north, 496 121 metres east;

Then heading in a general southwesterly direction for a distance of 436 metres, more or less, to a point having map scaled coordinates 5 517 790 metres north, 496 468 metres east;

Then heading in a general southeasterly direction for a distance of 3050 metres, more or less, to a point having map scaled coordinates 5 515 152 metres north, 497 974 metres east;

Then heading in a general southwesterly direction for a distance of 2363 metres, more or less, to a point having map scaled coordinates 5 513 042 metres north, 496 909 metres east;

Then heading in a general easterly direction for a distance of 1368 metres, more or less, to a point having map scaled coordinates 5 513 121 metres north, 498 264 metres east;

Then heading in a general northeasterly direction for a distance of 3789 metres, more or less, to the point of beginning;

Reserving out of the above described parcel of land, the Kruger woods road, 5 metres on both sides of the centreline, abutted and bounded as follows, that is to say; beginning at a point with map scaled coordinates 5 516 034 metres north, 497 472 metres east;

Then heading in a general westerly direction for a distance of 1934 metres, more or less, to a point having map scaled coordinates 5 515 916 metres north, 495 600 metres east; the above described parcel of land containing an area of 0.02 km².

The above described piece or parcel of land, Parcel 7, contains an area of 18.10 km².

Parcel 8

Beginning at a point having map scaled coordinates 5 518 339 metres north, 495 735 metres east;

Then heading in a general southwesterly direction for a distance of 728 metres, more or less, to a point having map scaled coordinates 5 518 011 metres north, 495 082 metres east;

Then heading in a general northwesterly direction for a distance of 1924 metres, more or less, to a point having map scaled coordinates 5 519 636 metres north, 494 040 metres east;

Then heading in a general southeasterly direction for a distance of 2136 metres, more or less, to the point of beginning, the above described piece or parcel of land containing an area of 0.70 km².

Parcel 9

Beginning at a point having map scaled coordinates 5 520 056 metres north, 493 499 metres east;

Then heading in a general southwesterly direction for a distance of 1076 metres, more or less, to a point having map scaled coordinates 5 519 382 metres north, 492 660 metres east;

Then heading in a general westerly direction for a distance of 1716 metres, more or less, to a point having map scaled coordinates 5 519 117 metres north, 490 961 metres east;

Then heading in a general northeasterly direction for a distance of 1102 metres, more or less, to a point having map scaled coordinates 5 520 118 metres north, 491 419 metres east;

Then heading in a general northwesterly direction for a distance of 3061 metres, more or less, to a point having map scaled coordinates 5 521 619 metres north, 488 753 metres east;

Then heading in a general southeasterly direction for a distance of 2104 metres, more or less, to a point having map scaled coordinates 5 521 090 metres north, 490 785 metres east;

Then heading in a general southeasterly direction for a distance of 1283 metres, more or less, to a point having map scaled coordinates 5 520 525 metres north, 491 935 metres east;

Then heading in a general southeasterly direction for a distance of 1544 metres, more or less, to a point having map scaled coordinates 5 520 111 metres north, 493 427 metres east;

Then heading in a general southeasterly direction for a distance of 90 metres, more or less, to the point of beginning, the above described piece or parcel of land containing an area of 3.18 km².

Parcel 10

Beginning at a point having map scaled coordinates 5 522 363 metres north, 485 363 metres east;

Then heading in a general southerly direction for a distance of 514 metres, more or less, to a point having map scaled coordinates 5 521 882 metres north, 485 191 metres east;

Then heading in a general northwesterly direction for a distance of 1065 metres, more or less, to a point having map scaled coordinates 5 522 208 metres north, 484 179 metres east;

Then heading in a general northwesterly direction for a distance of 2765 metres, more or less, to a point having map scaled coordinates 5 524 160 metres north, 482 217 metres east;

Then heading in a general northeasterly direction for a distance of 1992 metres, more or less, to a point having map scaled coordinates 5 525 868 metres north, 483 244 metres east;

Then heading in a general southeasterly direction for a distance of 936 metres, more or less, to a point having map scaled coordinates 5 525 406 metres north, 484 054 metres east;

Then heading in a general southerly direction for a distance of 1338 metres, more or less, to a point having map scaled coordinates 5 524 079 metres north, 483 849 metres east;

Then heading in a general southeasterly direction for a distance of 1812 metres, more or less, to a point having map scaled coordinates 5 522 508 metres north, 484 766 metres east;

Then heading in a general easterly direction for a distance of 611 metres, more or less, to the point of beginning, the above described piece or parcel of land containing an area of 4.54 km².

©Earl G. Tucker, Queen's Printer



**NEWFOUNDLAND AND LABRADOR
REGULATION 64/09**

Main River Waterway Provincial Park Order
under the
Provincial Parks Act
(O.C. 2009-210)

(Filed July 15, 2009)

Under the authority of section 4 of the *Provincial Parks Act*, the Lieutenant-Governor in Council constitutes the area described in the Schedule as a waterway provincial park.

Dated at St. John's, July 15, 2009.

Sandra Barnes
Deputy Clerk of the Executive Council

ORDER

The following parcel of land contains a total area of 151.8 square kilometres, more or less.

All that piece or parcel of land located at Main River, in the Provincial Electoral Districts of St. Barbe and Humber Valley, in the province of Newfoundland and Labrador, abutted as follows, that is to say; beginning at a point with map scaled coordinates 5 526 689 metres north, 473 352 metres east;

Then heading in a general southeasterly direction for a distance of 2128 metres, more or less, to a point having map scaled coordinates 5 526 317 metres north, 475 440 metres east;

Then heading in a general southeasterly direction for a distance of 1560 metres, more or less, to a point having map scaled coordinates 5 525 794 metres north, 476 901 metres east;

Then heading in a general southeasterly direction for a distance of 2922 metres, more or less, to a point having map scaled coordinates 5 524 474 metres north, 479 508 metres east;

Then heading in a southerly direction for a distance of 952 metres, more or less, to a point having map scaled coordinates 5 523 524 metres north, 479 434 metres east;

Then heading in a general southeasterly direction for a distance of 2357 metres, more or less, to a point having map scaled coordinates 5 521 838 metres north, 481 081 metres east;

Then heading in a general southerly direction for a distance of 2210 metres, more or less, to a point having map scaled coordinates 5 519 696 metres north, 481 594 metres east;

Then heading in a general southeasterly direction for a distance of 804 metres, more or less, to a point having map scaled coordinates 5 519 508 metres north, 482 373 metres east;

Then heading in a general southerly direction for a distance of 594 metres, more or less, to a point having map scaled coordinates 5 518 923 metres north, 482 262 metres east;

Then heading in a general easterly direction for a distance of 441 metres, more or less, to a point having map scaled coordinates 5 518 991 metres north, 482 696 metres east;

Then heading in a general southerly direction for a distance of 3565 metres, more or less, to a point having map scaled coordinates 5 515 471 metres north, 483 265 metres east;

Then heading in a general easterly direction for a distance of 790 metres, more or less, to a point having map scaled coordinates 5 515 339 metres north, 484 043 metres east;

Then heading in a general northeasterly direction for a distance of 1231 metres, more or less, to a point having map scaled coordinates 5 515 949 metres north, 485 115 metres east;

Then heading in a general northeasterly direction for a distance of 1357 metres, more or less, to a point having map scaled coordinates 5 516 863 metres north, 486 121 metres east;

Then heading in a general southeasterly direction for a distance of 1045 metres, more or less, to a point having map scaled coordinates 5 516 178 metres north, 486 906 metres east;

Then heading in a general southerly direction for a distance of 1038 metres, more or less, to a point having map scaled coordinates 5 515 169 metres north, 486 671 metres east;

Then heading in a general southeasterly direction for a distance of 626 metres, more or less, to a point having map scaled coordinates 5 514 684 metres north, 487 075 metres east;

Then heading in a general southerly direction for a distance of 1180 metres, more or less, to a point having map scaled coordinates 5 513 509 metres north, 487 182 metres east;

Then heading in a general easterly direction for a distance of 2950 metres, more or less, to a point having map scaled coordinates 5 513 180 metres north, 490 113 metres east;

Then heading in a general northeasterly direction for a distance of 1079 metres, more or less, to a point having map scaled coordinates 5 514 152 metres north, 490 575 metres east;

Then heading in a general easterly direction for a distance of 1071 metres, more or less, to a point having map scaled coordinates 5 514 378 metres north, 491 621 metres east;

Then along the northerly limit of the Kruger woods road 5 metres from the centerline, for a distance of 1981 metres, more or less, to a point having map scaled coordinates 5 515 222 metres north, 493 201 metres east;

Then heading in a general northerly direction for a distance of 853 metres, more or less, to a point having map scaled coordinates 5 516 020 metres north, 493 505 metres east;

Then heading in a general southeasterly direction for a distance of 539 metres, more or less, to a point having map scaled coordinates 5 515 747 metres north, 493 970 metres east;

Then heading in a general southerly direction for a distance of 731 metres, more or less, to a point having map scaled coordinates 5 515 016 metres north, 493 955 metres east;

Then heading in a general southeasterly direction for a distance of 483 metres, more or less, to a point having map scaled coordinates 5 514 633 metres north, 494 246 metres east;

Then heading in a general southerly direction for a distance of 801 metres, more or less, to a point having map scaled coordinates 5 513 838 metres north, 494 111 metres east;

Then heading in a general southwesterly direction for a distance of 607 metres, more or less, to a point having map scaled coordinates of 5 513 357 metres north, 493 736 metres east;

Then heading in a general southeasterly direction for a distance of 1373 metres, more or less, to a point having map scaled coordinates 5 512 095 metres north, 494 280 metres east;

Then heading in a general easterly direction for a distance of 611 metres, more or less, to a point having map scaled coordinates 5 512 111 metres north, 494 890 metres east;

Then heading in a general southwesterly direction for a distance of 896 metres, more or less, to a point having map scaled coordinates 5 511 273 metres north, 494 574 metres east;

Then heading in a general southeasterly direction for a distance of 834 metres, more or less, to a point having map scaled coordinates 5 510 611 metres north, 495 077 metres east;

Then heading in a westerly direction for a distance of 473 metres, more or less, to a point having map scaled coordinates 5 510 441 metres north, 494 636 metres east;

Then heading in a general southeasterly direction for a distance of 561 metres, more or less, to a point having map scaled coordinates 5 510 294 metres north, 495 179 metres east;

Then heading in a general northeasterly direction for a distance of 402 metres, more or less, to a point having map scaled coordinates 5 510 464 metres north, 495 541 metres east;

Then heading in a general southeasterly direction for a distance of 493 metres, more or less, to a point having map scaled coordinates 5 510 295 metres north, 496 003 metres east;

Then heading in a general northeasterly direction for a distance of 506 metres, more or less, to a point having map scaled coordinates 5 510 535 metres north, 496 450 metres east;

Then heading in a general southeasterly direction for a distance of 282 metres, more or less, to a point having 5 510 326 metres north, 496 638 metres east;

Then heading in a general southeasterly direction for a distance of 612 metres, more or less, to a point having map scaled coordinates 5 510 135 metres north, 497 223 metres east;

Then heading in a general easterly direction for a distance of 711 metres, more or less, to a point having map scaled coordinates 5 510 185 metres north, 497 932 metres east;

Then heading in a general northeasterly direction for a distance of 899 metres, more or less, to a point having map scaled coordinates 5 510 601 metres north, 498 728 metres east;

Then heading in a general southerly direction for a distance of 349 metres, more or less, to a point having map scaled coordinates 5 510 297 metres north, 498 899 metres east;

Then heading in a general easterly direction for a distance of 204 metres, more or less, to a point having map scaled coordinates 5 510 320 metres north, 499 101 metres east;

Then heading in a general northerly direction for a distance of 457 metres, more or less, to a point having map scaled coordinates 5 510 767 metres north, 499 011 metres east;

Then heading in a general easterly direction for a distance of 453 metres, more or less, to a point having map scaled coordinates 5 510 774 metres north, 499 462 metres east;

Then heading in a general northeasterly direction for a distance of 384 metres, more or less, to a point having map scaled coordinates 5 511 092 metres north, 499 682 metres east;

Then heading in a general northerly direction for a distance of 546 metres, more or less, to a point having map scaled coordinates 5 511 636 metres north, 499 643 metres east;

Then heading in a general northeasterly direction for a distance of 471 metres, more or less, to a point having map scaled coordinates 5 511 848 metres north, 500 064 metres east;

Then heading in a general northerly direction for a distance of 494 metres, more or less, to a point having map scaled coordinates 5 512 330 metres north, 500 165 metres east;

Then heading in a general southeasterly direction for a distance of 605 metres, more or less, to a point having map scaled coordinates 5 512 091 metres north, 500 720 metres east;

Then heading in a general easterly direction for a distance of 998 metres, more or less, to a point having map scaled coordinates 5 512 258 metres north, 501 704 metres east;

Then heading in a general northeasterly direction for a distance of 350 metres, more or less, to a point having map scaled coordinates 5 512 382 metres north, 502 033 metres east;

Then heading in a general southeasterly direction for a distance of 460 metres, more or less, to a point having map scaled coordinates 5 512 039 metres north, 502 339 metres east;

Then heading in a general northeasterly direction for a distance of 2369 metres, more or less, to a point having map scaled coordinates 5 512 955 MN, 504 533 metres east;

Then heading in a general southeasterly direction for a distance of 2074 metres, more or less, to a point having map scaled coordinates 5 512 482 metres north, 506 551 metres east;

Then heading in a general westerly direction following the sinuosities of Doucers Brook for a distance of 188 metres, more or less, to a point

having map scaled coordinates 5 512 604 metres north, 506 474 metres east;

Then heading in a general northerly direction following the sinuosities of Giles Brook for a distance of 270 metres, more or less, to a point having map scaled coordinates 5 512 848 metres north, 506 485 metres east;

Then heading in a general northerly direction for a distance of 110 metres, more or less, to a point having map scaled coordinates 5 512 956 metres north, 506 499 metres east;

Then heading in a general northwesterly direction for a distance of 19 metres, more or less, to a point having map scaled coordinates 5 512 974 metres north, 506 498 metres east;

Then heading in a general northwesterly direction for a distance of 26 metres, more or less, to a point having map scaled coordinates 5 512 999 metres north, 506 491 metres east;

Then heading in a general northwesterly direction for a distance of 96 metres, more or less, to a point having map scaled coordinates 5 513 084 metres north, 506 448 metres east;

Then heading in a general easterly direction for a distance of 10 metres, more or less, to a point with map scaled coordinates 5 513 086 metres north, 506 458 metres east;

Then heading in a general southeasterly direction, following the sinuosities of the Main River, for a distance of 189 metres, more or less, to a point having map scaled coordinates 5 512 952 metres north, 506 583 metres east;

Then heading in a general southeasterly direction of a distance of 115 metres, more or less, to a point having map scaled coordinates 5 512 848 metres north, 506 633 metres east;

Then heading in a general southeasterly direction for a distance of 52 metres, more or less, to a point having map scaled coordinates 5 512 807 metres north, 506 665 metres east;

Then heading in a general southeasterly direction for a distance of 125 metres, more or less, to a point having map scaled coordinates 5 512 721 metres north, 506 752 metres east;

Then heading in a general southeasterly direction for a distance of 16 metres, more or less, to a point having map scaled coordinates 5 512 712 metres north, 506 765 metres east;

Then along the westerly limit of the route 420, 20 metres from the centerline, for a distance of 1442 metres, more or less, to a point having map scaled coordinates 5 513 733 metres north, 506 437 metres east;

Then heading in a general northerly direction for a distance of 1261 metres, more or less, to a point having map scaled coordinates 5 514 980 metres north, 506 235 metres east;

Then heading in a general northwesterly direction for a distance of 2431 metres, more or less, to a point having map scaled coordinates 5 515 966 metres north, 504 021 metres east;

Then heading in a general southwesterly direction for a distance of 2639 metres, more or less, to a point having map scaled coordinates 5 514 827 metres north, 501 644 metres east;

Then heading in a general southeasterly direction for a distance of 903 metres, more or less, to a point having map scaled coordinates 5 514 340 metres north, 502 404 metres east;

Then heading in a general southwesterly direction for a distance of 1298 metres, more or less, to a point having map scaled coordinates 5 513 321 metres north, 501 595 metres east;

Then heading in a general westerly direction for a distance of 1331 metres, more or less to a point having map scaled coordinates 5 513 404 metres north, 500 265 metres east;

Then heading in a general north, westerly direction for a distance of 642 metres, more or less, to a point having map scaled coordinates 5 513 787 metres north, 499 751 metres east;

Then heading in a general southwesterly direction for a distance of 1170 metres, more or less, to a point having map scaled coordinates 5 512 961 metres north, 498 917 metres east;

Then heading in a general southeasterly direction for a distance of 714 metres, more or less, to a point having map scaled coordinates 5 512 733 metres north, 499 593 metres east;

Then heading in a general southwesterly direction for a distance of 2122 metres, more or less, to a point having map scaled coordinates 5 511 222 metres north, 498 100 metres east;

Then heading in a general southwesterly direction for a distance of 768 metres, more or less, to a point having map scaled coordinates 5 510 976 metres north, 497 370 metres east;

Then heading in a general northwesterly direction for a distance of 586 metres, more or less, to a point having map scaled coordinates 5 511 282 metres north, 496 868 metres east;

Then heading in a general westerly direction for a distance of 1223 metres, more or less, to a point having map scaled coordinates 5 511 221 metres north, 495 645 metres east;

Then heading in a general northwesterly direction for a distance of 267 metres, more or less, to a point having map scaled coordinates 5 511 320 metres north, 495 396 metres east;

Then heading in a general northerly direction for a distance of 553 metres, more or less, to a point having map scaled coordinates 5 511 820 metres north, 495 634 metres east;

Then heading in a general northerly direction for a distance 656 metres, more or less, to a point having map scaled coordinates 5 512 477 metres north, 495 615 metres east;

Then heading in a general northwesterly direction for a distance of 1441 metres, more or less, to a point having map scaled coordinates 5 513 605 metres north, 494 718 metres east;

Then heading in a general northeasterly direction for a distance of 487 metres, more or less, to a point having map scaled coordinates 5 514 036 metres north, 494 949 metres east;

Then heading in a general northerly direction for a distance of 452 metres, more or less, to a point having map scaled coordinates 5 514 485 metres north, 494 902 metres east;

Then heading in a general northeasterly direction for a distance of 517 metres, more or less, to a point having map scaled coordinates 5 514 697 metres north, 495 373 metres east;

Then heading in a general northeasterly direction for a distance of 686 metres, more or less, to a point having map scaled coordinates 5 515 284 metres north, 495 724 metres east;

Then heading in a general northerly direction for a distance of 1550 metres, more or less, to a point having map scaled coordinates 5 516 805 metres north, 495 423 metres east;

Then heading in a general northeasterly direction for a distance of 592 metres, more or less, to a point having map scaled coordinates 5 517 134 metres north, 495 914 metres east;

Then heading in a general northerly direction for a distance of 944 metres, more or less, to a point having map scaled coordinates 5 518 057 metres north, 496 121 metres east;

Then heading in a general northwesterly direction for a distance of 480 metres, more or less, to a point having map scaled coordinates 5 518 339 metres north, 495 735 metres east;

Then heading in a general southwesterly direction for a distance of 728 metres, more or less, to a point having map scaled coordinates 5 518 011 metres north, 495 082 metres east;

Then heading in a general northwesterly direction for a distance of 1924 metres, more or less, to a point having map scaled coordinates 5 519 636 metres north, 494 040 metres east;

Then heading in a general northwesterly direction for a distance of 687 metres, more or less, to a point having map scaled coordinates 5 520 056 metres north, 493 499 metres east;

Then heading in a general southwesterly direction for a distance of 1076 metres, more or less, to a point having map scaled coordinates 5 519 382 metres north, 492 660 metres east;

Then heading in a general westerly direction for a distance of 1716 metres, more or less, to a point having map scaled coordinates 5 519 117 metres north, 490 961 metres east;

Then heading in a general northeasterly direction for a distance of 1102 metres, more or less, to a point having map scaled coordinates 5 520 118 metres north, 491 419 metres east;

Then heading in a general northwesterly direction for a distance of 3061 metres, more or less, to a point having map scaled coordinates 5 521 619 metres north, 488 753 metres east;

Then heading in a general northwesterly direction for a distance of 2264 metres, more or less, to a point having map scaled coordinates 5 522 183 metres north, 486 560 metres east;

Then heading in a general westerly direction for a distance of 1212 metres, more or less, to a point having map scaled coordinates 5 522 363 metres north, 485 363 metres east;

Then heading in a general southerly direction for a distance of 514 metres, more or less, to a point having map scaled coordinates 5 521 882 metres north, 485 191 metres east;

Then heading in a general northwesterly direction for a distance of 1065 metres, more or less, to a point having map scaled coordinates 5 522 208 metres north, 484 179 metres east;

Then heading in a general northwesterly direction for a distance of 2765 metres, more or less, to a point having map scaled coordinates 5 524 160 metres north, 482 217 metres east;

Then heading in a general northeasterly direction for a distance of 1992 metres, more or less, to a point having map scaled coordinates 5 525 868 metres north, 483 244 metres east;

Then heading in a general northwesterly direction for a distance of 977 metres, more or less, to a point having map scaled coordinates 5 526 356 metres north, 482 401 metres east;

Then heading in a general northwesterly direction for a distance of 1291 metres, more or less, to a point having map scaled coordinates 5 527 263 metres north, 481 482 metres east;

Then heading in a general westerly direction for a distance of 2499 metres, more or less, to a point having map scaled coordinates 5 527 648 metres north, 479 012 metres east;

Then heading in a general northwesterly direction for a distance of 1680 metres, more or less, to a point having map scaled coordinates 5 528 685 metres north, 477 682 metres east;

Then heading in a general northwesterly direction for a distance of 2834 metres, more or less, to a point having map scaled coordinates 5 530 249 metres north, 475 316 metres east;

Then heading in a general westerly direction for a distance of 1392 metres, more or less, to a point having map scaled coordinates 5 530 144 metres north, 473 927 metres east;

Then heading in a general westerly direction for a distance of 38 metres, more or less, to a point having map scaled coordinates 5 530 141 metres north, 473 890 metres east;

Then heading in a general southwesterly direction for a distance of 22 metres, more or less, to a point having map scaled coordinates 5 530 136 metres north, 473 867 metres east;

Then following the sinuosities of the southerly shoreline of a lake to a point having map scaled coordinates 5 530 045 metres north, 472 614 metres east;

Then heading in a general westerly direction for a distance of 58 metres, more or less, to a point having map scaled coordinates 5 530 040 metres north, 472 557 metres east;

Then heading in a general westerly direction for a distance of 787 metres, more or less, to a point having map scaled coordinates 5 529 981 metres north; 471 774 metres east;

Then heading in a general southwesterly direction for a distance of 2186 metres, more or less, to a point having map scaled coordinates 5 528 335 metres north, 470 343 metres east;

Then heading in a general southeasterly direction for a distance of 1246 metres, more or less, to a point having map scaled coordinates 5 527 238 metres north, 470 950 metres east;

Then heading in a general southeasterly direction for a distance of 1272 metres, more or less, to a point having map scaled coordinates 5 526 343 metres north, 471 846 metres east;

Then heading in a general northeasterly direction for a distance of 1548 metres, more or less, to the point of beginning, the above described piece or parcel of land containing an area of 152 km², more or less.

Reserving out of the above described parcel of land the Kruger woods road, 5 metres from either side of the centreline, abutted and bounded as follows, that is to say; beginning at a point with map scaled coordinates 5 513 569 metres north, 506 331 metres east;

Then heading in a general northwesterly direction for a distance of 4900 metres, more or less, to a point having map scaled coordinates 5 515 001 metres north, 502 006 metres east; the above described piece or parcel of land containing an area of 0.049 km², more or less.

Also reserving out of the above described parcel of land the Kruger woods road, 5 metres on both sides of the centreline, abutted and bounded as follows, that is to say; beginning at a point with map scaled coordinates 5 515 916 metres north, 495 600 metres east;

Then heading in a general westerly direction for a distance of 2000 metres, more or less, to a point on the southern boundary of the described parcel having map scaled coordinates 5 515 801 metres north, 493 880 metres east; the above described piece or parcel of land containing an area of 0.02 km², more or less.

Reserving out of the above described parcel of land, a section of land referred to as Parcel 1, located on the southern bank of the Main River, as abutted and bounded as follows. That is to say; beginning at a point having map scaled coordinates 5 527 327 metres north, 472 365 metres east;

Then heading in a general southwesterly direction, following the eastern bank of a small river, while maintaining a distance of 20 metres from the high water mark, for a distance of 430 metres, more or less, to a point having map scaled coordinates 5 527 080 metres north, 472 040 metres east;

Then heading in a generally southeasterly direction for a distance of 430 metres more or less, to a point having map scaled coordinates 5 526 902 metres north, 472 429 metres east;

Then heading in a generally northeasterly direction, following the western bank of a small river, while maintaining a distance of 20 me-

tres from the high water mark, for a distance of 570 metres, more or less, to a point having map scaled coordinates 5 527 365 metres north, 472 656 metres east;

Then heading in a generally westerly direction along the southern bank of the Main River, while maintaining a distance of 20 metres from the coastline, for a distance of 350 metres, more or less, back to the point of beginning, the above described parcel of land containing an area of 0.143 square kilometres.

All coordinates are based on the UTM projection, Zone 21, with the central meridian of 57° west longitude, North American Datum 1983.

©Earl G. Tucker, Queen's Printer



**NEWFOUNDLAND AND LABRADOR
REGULATION 65/09**

Provincial Parks Regulations (Amendment)
under the
Provincial Parks Act
(O.C. 2009-211)

(Filed July 15, 2009)

Under the authority of section 8 of the *Provincial Parks Act*, the Lieutenant-Governor in Council makes the following regulations.

Dated at St. John's, July 15, 2009.

Sandra Barnes
Deputy Clerk of the Executive Council

REGULATIONS

Analysis

- | | |
|--|---|
| 1. S. 9 Amdt.
Snowmobiles permitted | 2. Ss.15, 16, & 17 Added
15. Entry permit required
16. Use of aircraft
17. Scientific research |
|--|---|

NLR 91/97
as amended

1. Section 9 of the *Provincial Parks Regulations* is amended by adding immediately after subsection (2) the following:

(3) Notwithstanding subsection (1), a person may operate a snowmobile in the *Main River Waterway Provincial Park*.

2. The regulations are amended by adding immediately after section 14 the following:

Entry permit required

15. A person or corporation pursuing a commercial enterprise shall not enter the Main River Waterway Provincial Park without first obtaining a permit to enter from the minister.

Use of aircraft

16. (1) A person shall not land an aircraft in or take off in an aircraft from a provincial park unless he or she had first obtained a permit to do so from the minister.

(2) Subsection (1) does not apply where the health or safety of a person requires that an aircraft land in or take off from a provincial park without a permit to do so first having been obtained from the minister.

Scientific research

17. (1) A person shall not conduct scientific research in a provincial park unless he or she has obtained a permit to do so from the minister.

(2) Permits may be obtained from the minister upon submission of a written request fully outlining and detailing the research project, and subject to the terms and conditions that the minister may determine.

©Earl G. Tucker, Queen's Printer

Index

PART I

Change of Name Act – Applications	296
Corporations Act– Notices	287
Credit Union Act– Notice	292
Lands Act– Notices	296
Mineral Act– Notice	292
Quieting of Titles Act– Notices	297
Trustee Act– Notice	302
Urban and Rural Planning Act– Notices	295

PART II

CONTINUING INDEX OF SUBORDINATE LEGISLATION

Title of Act and Subordinate Legislation made thereunder	CNLR or NL Reg.	Amendment	NL Gazette Date & Page No.
Income Tax Act, 2000			
Income Tax Deduction (Amdt)	NLR 57/09	NLR 123/09 Sch. A. Amdt. Sch. B. R&S	July 17/09, p. 283
Lands Act			
Main River Special Management Area	NLR 61/09	New	July 17/09, p. 297
Main River Special Management Area Regulations	NLR 62/09	New	July 17/09, p. 311
Mineral Act			
Mineral Regulations (Amdt)	NLR 63/09	CNLR1143/96 Sch. A. Amdt	July 17/09, p. 315
Natural Products Marketing Act			
Assessment of Over-Marketing Regulations, 2009	NLR 58/09	R&S CNLR1171/96	July 17/09, p. 289

PART II
CONTINUING INDEX OF SUBORDINATE LEGISLATION

Title of Act and Subordinate Legislation made thereunder	CNLR or NL Reg.	Amendment	NL Gazette Date & Page No.
Provincial Parks Act			
Main River Waterway Provincial Park Order	NLR 64/09	New	July 17/09, p. 331
Provincial Parks Regulations (Amdt)	NLR 65/09	NLR 91/97 S. 9 Amdt. Ss. 15, 16 & 17 Added	July 17/09, p. 345
Wilderness and Ecological Reserves Act			
Lawn Islands Archipelago Provisional Ecological Reserve Order	NLR 59/09	New	July 17/09, p. 293
Seabird Ecological Reserve Regulations (Amdt)	NLR 60/09	NLR 66/97 S.4.1 Added Ss. 8 & 10 Amdt. Sch. Amdt.	July 17/09, p. 295

The Newfoundland and Labrador Gazette is published from the office of Earl G. Tucker, Queen's Printer.

Copy for publication must be received before **Friday, 4:30 p.m.**, seven days before publication, to ensure inclusion in next issue.

Advertisements should be typewritten or printed legibly, separate from covering letter. Number of insertions required must be stated and the names of all signing officers typewritten or printed.

Copy may be mailed to the address below, faxed to (709) 729-1900 or emailed to queensprinter@gov.nl.ca.

Advertising rates are available upon request. Subscription rate for *The Newfoundland and Labrador Gazette* is \$125.00 for 52 weeks plus applicable tax (\$131.25). Weekly issues of \$3.00 per copy, plus tax payable in advance.

All cheques, money orders, etc., should be made payable to THE NEWFOUNDLAND EXCHEQUER ACCOUNT and all correspondence should be addressed to: Office of the Queen's Printer, P. O. Box 8700, Ground Floor, East Block, Confederation Building, St. John's, NL A1B 4J6. Telephone (709) 729-3649. Fax: (709) 729-1900.

Web Site: <http://www.gs.gov.nl.ca/gsoqp>

**Place your order by contacting:
Office of The Queen's Printer
Confederation Building, East Block
St. John's, NL A1B 4J6
Telephone: (709) 729-3649 Fax: (709) 729-1900
email: queensprinter@gov.nl.ca**

**Government Information Product
Publication Rate Mail
G.S.T. # R107442683**

All requests for Subscription and Legislation MUST be prepaid.