



THE NEWFOUNDLAND AND LABRADOR GAZETTE

PART I

PUBLISHED BY AUTHORITY

Vol. 84

ST. JOHN'S, FRIDAY, NOVEMBER 20, 2009

No. 47

MINERAL ACT

CORRECTION NOTICE

Due to issues surrounding the November 17, 2009 movement of Servers which support the Online staking system, the Mineral Notice published in *The Newfoundland and Labrador Gazette* in the October 23, 2009 issue, Volume 84, Folio 43 on pages 432-434 has been cancelled and will be published at a later date. The lands will come open for staking after republication.

JIM HINCHEY, P.Geo.
Manager - Mineral Rights

Nov 20

October, 2009 has been registered by the Minister of Municipal Affairs.

In general terms, the purpose of Development Regulations Amendment Number 471, 2009 is to rezone land at Civic Number 261 Empire Avenue to the Residential Mixed Use (RM) Zone.

The St. John's Development Regulations Amendment Number 471, 2009 comes into effect on the day that this notice is published in *The Newfoundland & Labrador Gazette*. Anyone who wishes to inspect a copy of the amendment may do so at the Department of Planning, St. John's City Hall during regular business hours.

URBAN AND RURAL PLANNING ACT

NOTICE OF REGISTRATION ST. JOHN'S DEVELOPMENT REGULATIONS AMENDMENT NUMBER 471, 2009

Take notice that the St. John's Development Regulations Amendment Number 471, 2009 adopted on the 19th day of

CITY OF ST. JOHN'S
Cheryl Kearney, Department of Planning

Nov 20

QUIETING OF TITLES ACT

**2009 01T 4616
IN THE SUPREME COURT OF
NEWFOUNDLAND AND LABRADOR
TRIAL DIVISION**

ADDRESS FOR SERVICE

Suite 900 Atlantic Place
215 Water Street, P.O. Box 1538
St. John's, NL A1C 5N8
Tel: 709-570-7242
Fax: 709-579-2647

IN THE MATTER OF an Application of MAXINE TAPP
of the City of St. John's, in the Province of Newfoundland
and Labrador

September 25, 2009

Job No. 8605

SCHEDULE "A"

AND

**PROPERTY OF THE ESTATE OF EDWARD LESTER
PITTS MEMORIAL DRIVE, ST. JOHN'S,
NEWFOUNDLAND & LABRADOR**

IN THE MATTER OF the *Quieting of Titles Act*, cQ-3, of
the RSNL, 1990, and amendments thereto

AND

IN THE MATTER OF a piece or parcel of land situate and
being on Heavy Tree Road in the City of St. John's, in the
Province of Newfoundland and Labrador

ALL THAT piece or parcel of land, situate and being on
the southern side of Pitts Memorial Drive, in the City of St.
John's, in the Province of Newfoundland & Labrador,
Canada, and being bounded and abutted as follows: THAT
IS TO SAY, beginning at a point on the southern side of
Pitts Memorial Drive, said point having coordinates N 5
261 938.830 metres and E 319 597.215 metres of the Three
Degree Modified Transverse Mercator Projection NAD -
83 for the Province of Newfoundland & Labrador,
THENCE along the southern side of Pitts Memorial Drive
S 83047'58" E for a distance of 96.992 metres, THENCE S
84037'03" E for a distance of 52.668 metres, THENCE N
86018'23" E for a distance of 78.091 metres, THENCE N
83037'58" E for a distance of 72.505 metres, THENCE N
79007'08" E for a distance of 80.211 metres, THENCE N
75021'40" E for a distance of 41.750 metres, THENCE N
70047'08" E for a distance of 29.994 metres, THENCE N
71026'337" E for a distance of 41.766 metres, THENCE
along the western side of a Right of Way (20.12 metres
wide) S 30018'45" E for a distance of 154.648 metres,
THENCE by property of Albert E. Chislett S 63002'50" W
for a distance of 132.663 metres, THENCE by property of
Evelyn Thorns S 63009'01" W for a distance of 276.636
metres, THENCE S 64032'00" W for a distance of 31.228
metres, THENCE by property now or formerly Chester
Dawe Limited N 31004'43" W for a distance of 150.785
metres, THENCE by property of the City of St. John's, by
properties fronting on Green Acre Drive and by a Buffer
Zone N 30042'48" W for a distance of 181.861 metres,
more or less, to the point of beginning and containing an
area of 9.716 hectares, more or less. Which land is more
particularly shown on the plan hereto attached. All
bearings being referred to the above mentioned projection.
All linear measurements are horizontal ground distances.

Notice of Application under the *Quieting of Titles Act*, cQ-
3 of the RSNL 1990 and amendments thereto

NOTICE IS HEREBY GIVEN to all parties that MAXINE
TAPP has applied to the Supreme Court of Newfoundland
and Labrador, Trial Division, to have the title to ALL
THAT piece or parcel of land situate and being on Heavy
Tree Road, within the jurisdiction of the City of St. John's,
in the Province of Newfoundland and Labrador and being
more particularly described in the Schedule hereunto
attached and marked "A" of which MAXINE TAPP claims
the Estates of Marjorie C. Knight, Dora I. Tapp, Elizabeth
E. James and George Gladstone Lester to be the owners
investigated and she requests a declaration that the said
Estates are the legal and beneficial owners in possession,
and the said Court having ordered that Notice of the said
Application be published as required by the above named
Act.

This description and accompanying plan, Job # 8605 of
Brown & Way Surveys, form an integral part of the returns
and are not separable.

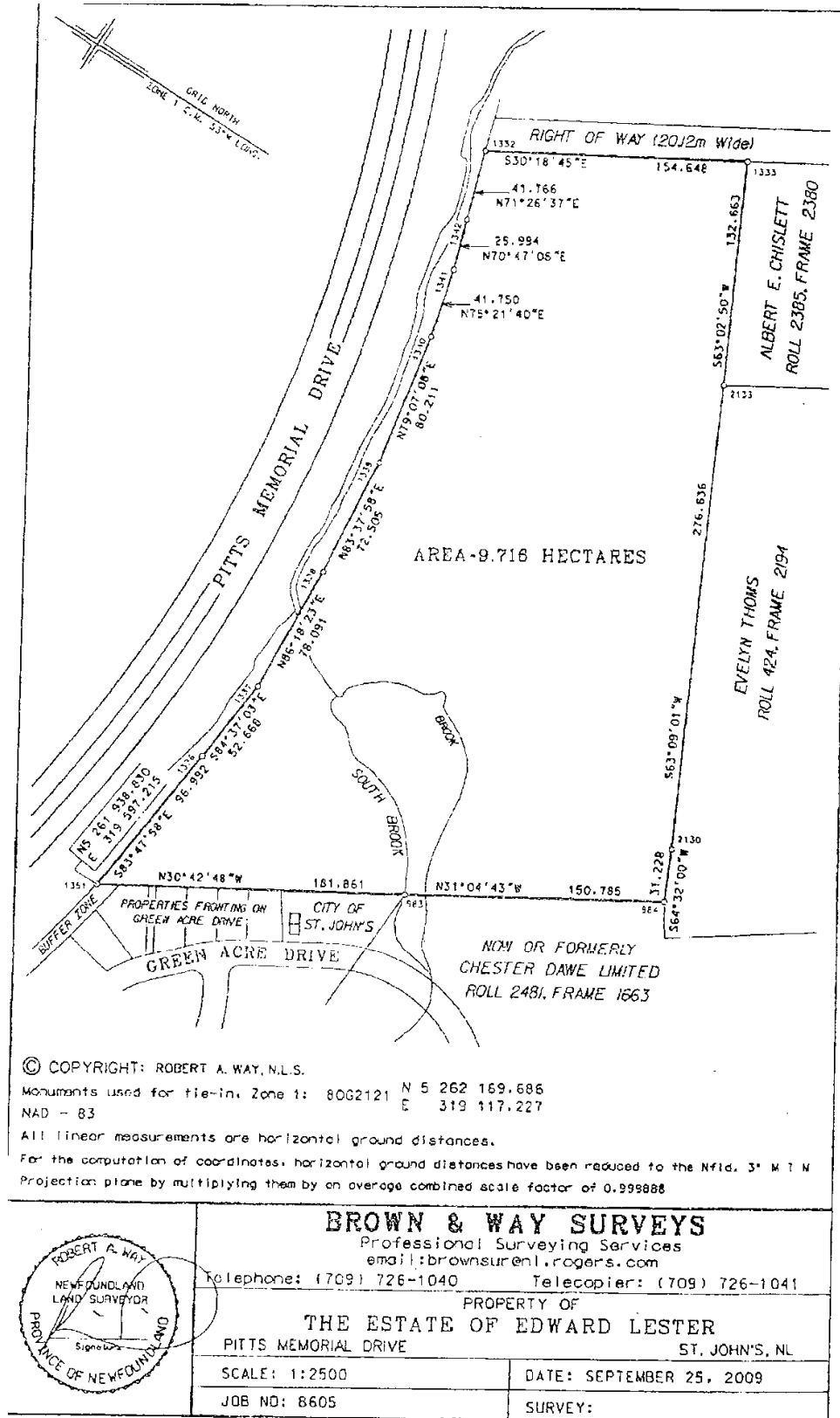
All persons having title adverse to the said title, claimed
BY MAXINE TAPP on behalf of the aforesaid Estates
shall file in the Registry of the Supreme Court of
Newfoundland and Labrador particulars of such adverse
claim and serve the same together with an Affidavit
verifying the same on the undersigned Solicitors for the
Applicants on or before the 27th day of November, 2009,
after which date no party having any claim shall be
permitted to file the same or to be heard except by special
leave of the Court and subject to such conditions as the
Court may deem just.

Brown & Way Surveys

All such adverse claims shall then be investigated in such
manner as the said Supreme Court may direct.

DATED at St. John's, this 20th day of November, 2009.

BENSON MYLES PLC INC
Solicitors for the Applicant
PER: Darren O'Keefe



Nov 20

TRUSTEE ACT

ESTATE NOTICE

In The Matter of the Estate and Effects of late MARJORIE LEDREW of the Community of Wing's Point, in the Province of Newfoundland and Labrador, Retired Person, Deceased.

All persons claiming to be creditors of or who have any claims or demands upon or affecting the Estate of MARJORIE LEDREW, the aforesaid deceased, who died at the Town of Gander, in the Province of Newfoundland and Labrador on or about the 15th day of May, 2003, are hereby requested to send particulars thereof in writing, duly attested, to the undersigned Solicitor for the Administratrix of the Estate on or before the 23rd day of November, 2009 after which date the Administratrix will proceed to distribute the said Estate having regard only to the claims of which she shall then have had notice.

DATED at the Town of Gander, Newfoundland and Labrador, this 4th day of November, 2009.

BONNELL LAW
Solicitor for the Administratrix
PER: R. Archibald Bonnell

ADDRESS FOR SERVICE:
P.O. Box 563
218 Airport Boulevard
Gander, NL A1V 2E1
Tel: (709) 651-4949
Fax: (709) 651-4951

Nov 13 & 20

ESTATE NOTICE

IN THE MATTER OF the Estate and Effects of the late WALTER ROY BABSTOCK also known as ROY BABSTOCK, late of the Town of Eastport, in the Province of Newfoundland and Labrador, Retired Educator, deceased

All persons claiming to be creditors of or who have any claims or demands upon or affecting the Estate of WALTER ROY BABSTOCK also known as ROY BABSTOCK, late of the Town of Eastport, aforesaid, deceased, are hereby requested to send particulars thereof, in writing, duly attested, to the undersigned solicitors for the Executor of the Estate of the said deceased on or before the 10th day of December, 2009, after which date the said Executor will proceed to distribute the Estate having regard only to the claims of which they then shall have notice.

DATED at the Town of Gander, in the Province of Newfoundland and Labrador, this 12th day of November, 2009.

EASTON HILLIER LAWRENCE PRESTON
Solicitors for the Executor
PER: Fiona Innes

ADDRESS FOR SERVICE:

Polaris Building
61 Elizabeth Drive
Gander, NL A1V 1G4
Tel: (709) 256-4006
Fax: (709) 651-2850
Nov 20

ESTATE NOTICE

In the matter of the Estate of DESMOND THOMAS MCGRATH, late of Stephenville, in the province of Newfoundland and Labrador

All persons claiming to be creditors of or who have any claims or demands upon or affecting the Estate of DESMOND THOMAS MCGRATH, late of Stephenville, in the Province of Newfoundland and Labrador, deceased, are hereby requested to send particulars of the same in writing, duly attested to the undersigned Solicitor for the Executor of the Estate on or before the 19th of December, 2009, after which date the said Executor will proceed to distribute the said Estate having regard only to the claims of which he shall then have had notice.

Dated at Corner Brook, NL, this 12th day of December, 2009.

Gerard J. Martin, Q.C.

ADDRESS FOR SERVICE
20 Central Street,
Corner Brook, NL A2H 2M6

Nov20



THE NEWFOUNDLAND AND LABRADOR GAZETTE

PART II

SUBORDINATE LEGISLATION FILED UNDER THE STATUTES AND SUBORDINATE LEGISLATION ACT

Vol. 84

ST. JOHN'S, FRIDAY, NOVEMBER 20, 2009

No. 47

NEWFOUNDLAND AND LABRADOR REGULATIONS

NLR 94/09
NLR 95/09
NLR 96/09
NLR 97/09
NLR 98/09
NLR 99/09
NLR 100/09
NLR 101/09
NLR 102/09
NLR 103/09
NLR 104/09



NEWFOUNDLAND AND LABRADOR REGULATION 94/09

*Open Season Big Game Moose Hunting Order,
Newfoundland, 2009-2010*
under the
Wild Life Regulations
and the
Wild Life Act

(Filed November 18, 2009)

Under the authority of sections 38 and 114 of the *Wild Life Regulations* and the *Wild Life Act*, I make the following Order.

Dated at St. John's, November 10, 2009.

Charlene Johnson
Minister of Environment and Conservation

ORDER

Analysis

- | | |
|---------------------------|-------------------|
| 1. Short title | 6. Prohibition |
| 2. Moose management areas | 7. Sunday hunting |
| 3. Open season | 8. Repeal |
| 4. Proof of sex | |
| 5. Bag limit | Schedule |

Short title

1. This Order may be cited as the *Open Season Big Game Moose Hunting Order, Newfoundland, 2009-2010*.

*Open Season Big Game Moose Hunting Order,
Newfoundland, 2009-2010*

94/09

Moose management areas
Open season

2. The moose management areas shall be as described in the Schedule.

3. (1) The open seasons for moose hunting in the areas described in Schedule A shall be

Area No.	Season Dates
1-27	September 12, 2009 - December 13, 2009
28-36	October 3, 2009 - January 3, 2010
37	September 12, 2009 – December 13, 2009
38	October 3, 2009 – January 3, 2010
39-43	September 12, 2009 - December 13, 2009
44	October 3, 2009 - January 3, 2010
45	September 12, 2009 - December 13, 2009
47	October 3, 2009 - January 3, 2010

(2) In addition to subsection (1), hunting by bow and arrow only shall be permitted in the following areas for the periods indicated:

Area No.	Hunting by Bow and Arrow
1, 2, 2A, 3, 4, 5, 5A, 6, 7, 8, 9, 10, 11, 12, 13, 14, 15, 16, 17, 18, 19, 20, 21, 22, 23, 24, 25, 26, 27, 37, 39, 39A, 40, 41, 42, 43 and 45	August 29, 2009 to September 12, 2009
28, 29, 30, 31, 32, 33, 34, 35, 36, 38, 44 and 47	September 19, 2009 to October 3, 2009

(3) Notwithstanding subsection (1) and (2), there shall be no open season in Area 43 for moose that are predominately white in color.

Proof of sex

4. The holder of a big game licence to hunt, take or kill female only animals shall, upon request of a wildlife officer, produce the head of the animal.

Bag limit

5. The bag limit is one moose as specified in each licence.

*Open Season Big Game Moose Hunting Order,
Newfoundland, 2009-2010*

94/09

- | | |
|----------------|---|
| Prohibition | <p>6. A person shall not transport or possess any firearms under the authority of a valid game licence without being in possession of an outdoor identification card, or non-resident equivalent card, issued to the person.</p> |
| Sunday hunting | <p>7. Hunting with a firearm on Sundays shall be permitted across the entire province, beginning October 4, 2009 and ending April 30, 2010, for the species and during the seasons as described in this Order.</p> |
| Repeal | <p>8. The <i>Open Season Big Game Moose Hunting Order, Newfoundland, 2008-2009</i>, Newfoundland and Labrador Regulation 63/08 is repealed.</p> |

Schedule

(a) Management Area 1 - St. Anthony

All that area of the Island of Newfoundland commencing at the junction of the Northern Peninsula Highway and the Viking Trail at Eddies Cove;

Then following a straight line to the closer point to the coastline of the Straits of Belle Isle;

Then following the coastline in a generally northeasterly direction to Cape Norman;

Then following the coastline of Pistolet Bay, Ha Ha Bay to Cape Onion;

Then following the coastline of Sacred Bay around Cape Ardoise, Cobbler Point, south around Goose Cape, the northern shoreline of Hare Bay to Boiling Brook;

Then following a straight line in a generally northwesterly direction to a point on the Viking Trail opposite the access road to the St. Anthony Airport;

Then following the Viking Trail in a generally westerly direction to the point of commencement, excluding all offshore islands except Quirpon Island.

(b) Management Area 2 - Portland Creek

All that area of the Island of Newfoundland beginning at a point lying northeast of Shallow Bay on the Gulf of St. Lawrence at the original low water mark, that point having UTM co-ordinates 444,942 metres east and 5,536,177 metres north;

Then following the coastline in a generally northeasterly direction to the mouth of Eddies Brook at Eddies Cove West;

Then following a straight line in a generally southeasterly direction to a large pond on the headwaters of Soufflets River,

named Rocky Stent, UTM co-ordinates 518,412 metres east and 5,596,488 metres north;

Then following a straight line to UTM co-ordinates 512,823 metres east and 5,594,406 metres north;

Then following a straight line to UTM co-ordinates 498,859 metres east and 5,586,620 metres north;

Then following a straight line to UTM co-ordinates 493,838 metres east and 5,580,027 metres north;

Then following a straight line to UTM co-ordinates 484,851 metres east and 5,564,824 metres north;

Then following a straight line to UTM co-ordinates 474,730 metres east and 5,562,839 metres north;

Then following a straight line to UTM co-ordinates 471,548 metres east and 5,559,765 metres north;

Then following a straight line to UTM co-ordinates 476,223 metres east and 5,550,032 metres north;

Then following a straight line to UTM co-ordinates 474,661 metres east and 5,548,530 metres north;

Then following a straight line to UTM co-ordinates 464,624 metres east and 5,531,418 metres north;

Then following a straight line to UTM co-ordinates 462,454 metres east and 5,531,331 metres north;

Then following a straight line to UTM co-ordinates 461,359 metres east and 5,530,177 metres north;

Then following a straight line to UTM co-ordinates 460,194 metres east and 5,531,447 metres north;

Then following a straight line to the point of commencement, excluding all offshore islands.

(c) Management Area 2A- Cow Head- St. Paul's Enclaves

Area 2a Cow Head Enclave

All that area of Newfoundland commencing at the Ordinary Low Water Mark and a point located at 5525943.436 meters North and 358011.496 meters East;

Then following an azimuth of 50° 53' 41" for a distance of 5952.559 meters;

Then following a azimuth of 287° 28' 16" for a distance of 4694.308 meters;

Then following a azimuth of 302° 13' 27" for a distance of 1807.12 meters;

Then continuing on that azimuth for an additional 160 meters to Cow Head Harbour;

Then following the western shoreline of the Great Northern Peninsula in a generally southerly direction to St. Paul's bay;

Then following the northern shoreline of St. Paul's bay and St. Paul's inlet to the point of commencement.

Bearings, distance and coordinates have been recorded using 3° Modified Transverse Mercator Projection (Zone 3 Newfoundland).

Area 2a: St. Paul's Enclave

All that area of Newfoundland commencing at the shoreline of the Great Northern Peninsula (ordinary low water mark) and a point located at 5522671.22 meters North and 351144.9 meters East;

Then following an azimuth of 170° 42' 04" for a distance of 217 meters;

Then following a azimuth of 145° 18' 11" for a distance of 3005 meters;

Then following a azimuth of 92° 19' 54" for a distance of 2837.92 meters;

Then continuing on the aforementioned azimuth for an additional 25 meters to the ordinary low water mark of St. Paul's inlet;

Then following the southern shoreline of St. Paul's inlet in a generally north-westerly direction to St. Paul's bay;

Then following the southern shoreline of St. Paul's bay in a generally westerly direction to its confluence with the Gulf of St. Lawrence;

Then following the western shoreline of the Great Northern Peninsula in a southerly direction to the point of commencement.

Bearings, distance and coordinates have been recorded using 3° Modified Transverse Mercator Projection (Zone 3 Newfoundland).

(d) Management Area 3 - Harbour Deep

All that area of the Island of Newfoundland beginning at UTM co-ordinates 466,346 metres east and 5,513,256 metres north on the Gros Morne National Park boundary;

Then following a straight line to UTM co-ordinates 461,187 metres east and 5,520,629 metres north;

Then following a straight line to UTM co-ordinates 461,359 metres east and 5,530,177 metres north;

Then following a straight line to UTM co-ordinates 462,454 metres east and 551,331 metres north;

Then following a straight line to UTM co-ordinates 464,624 metres east and 5,531,418 metres north;

Then following a straight line to UTM co-ordinates 474,661 metres east and 5,548,530 metres north;

Then following a straight line to UTM co-ordinates 476,233 metres east and 55,500,325 metres north;

Then following a straight line to UTM co-ordinates 471,548 metres east and 5,559,765 metres north;

Then following a straight line to UTM co-ordinates 474,730 metres east and 5,562,839 metres north;

Then following a straight line to UTM co-ordinates 484,851 metres east and 5,564,824 metres north;

Then following a straight line to UTM co-ordinates 493,838 metres east and 5,580,027 metres north;

Then following a straight line to UTM co-ordinates 498,859 metres east and 5,586,620 metres north;

Then following a straight line to UTM co-ordinates 512,823 metres east and 5,594,406 metres north;

Then following a straight line to Rocky Stent Pond on the headwaters of the Soufflets River, at UTM co-ordinates 518,412 metres east and 5,596,488 metres north;

Then following a straight line to a generally easterly direction to Williamsport at the head of Fourche Harbour;

Then following the coastline in a generally southerly direction to Great Coney;

Then following a straight line in a generally southwesterly direction to UTM co-ordinates 466,346 metres east and 5,513,256 metres north on the boundary of the Gros Morne National Park. Excludes all offshore islands.

(e) Management Area 4 – Taylors Brook

All the area of the Island of Newfoundland bounded by a line beginning at the point on Route 430 where this highway intersects with the Gros Morne National Park boundary;

Then following the park boundary to UTM coordinates 466,346 metres east and 5,513,256 metres north;

Then following a straight line in an easterly direction to the brook flowing into the southernmost point in Great Coney Arm;

Then following the coastline of White Bay in a generally southerly then northeasterly direction to the outflow of Little Chouse Brook in White Bay;

Then following Little Chouse Brook in a southeasterly direction to its source in Little Chouse Brook Pond;

Then following the western shoreline of this pond to its southern extremity;

Then following a straight line due south to its intersection with Main Brook at UTM coordinates 520,375 metres east and 5,486,500 metres north;

Then following this brook and waterways in a general south-eastern direction to its source in Upper Indian Pond;

Then following the western shoreline of Upper Indian Pond to the outflow of a small stream exiting the said pond at its southwestern extremity;

Then following this stream to its outflow in Indian Brook;

Then following Indian Brook in a southeasterly direction to a dam at UTM coordinates 527,700 metres east and 5,468,750 metres north;

Then following a straight line in a southerly direction to the intersection of an access road and Route 1, the Trans Canada Highway, TCH, at UTM coordinates 528,000 metres east and 5,468,100 metres north;

Then following the TCH in a westerly direction to a point due south of the northeastern extremity of Birchy Lake;

Then following a straight line to said point on Birchy Lake;

Then following the southwestern shoreline of Birchy Lake and the southern and western shore of Sandy Lake to its intersection with the former Railway Bridge near Howley;

Then following the northern shoreline of Grand Lake to the western abutment of Main Dam on Junction Brook;

Then following the north bank of the Humber Canal and Spillway to Route 1;

Then following Route 1 to its intersection with Route 430;

Then following Route 430 to the point of commencement but excluding all offshore islands.

(f) Management Area 5 - Trout River

All that area of the Island of Newfoundland bounded by a line beginning at the Gros Morne National Park boundary on the Gulf of St. Lawrence near Trout River;

Then following this boundary line where it intersects with Route 430;

Then following Route 430 to its intersection with the Trans Canada Highway, TCH, in the Town of Deer Lake;

Then following the TCH to the Humber Canal Spillway Crossing;

Then following the southeast shoreline of Deer Lake and the Humber River to Humber Arm;

Then crossing the mouth of Humber River and following the Northern Shore of the Bay of Islands to the point of commencement.

(g) Management Area 5A- Rocky Harbour Eastern and Western Enclaves

Area 5a Rocky Harbour Eastern (Interior) Enclave

All that area of Newfoundland commencing on the Great Northern Peninsula located at 5496416.35 meters North and 345632.49 meters East;

Then following an azimuth of 45° 06' 13" for a distance of 1919.18 meters;

Then following an azimuth of 116° 05' 43" for a distance of 1385.20 meters;

Then following an azimuth of 54° 24' 33" for a distance of 275.48 meters;

Then following an azimuth of 97° 58' 36" for a distance of 24.19 meters;

Then following an azimuth of 42° 58' 51" for a distance of 46.68 meters;

Then following an azimuth of 70° 07' 33" for a distance of 35.41 meters;

Then following an azimuth of 18° 53' 58" for a distance of 33.74 meters;

Then following an azimuth of 20° 26' 13" for a distance of 99.43 meters;

Then following an azimuth of 347° 06' 02" for a distance of 2599.63 meters;

Then following an azimuth of 84° 19' 06" for a distance of 2352.11 meters;

Then following an azimuth of 194° 30' 18" for a distance of 1516.92 meters to an unnamed stream;

Then following the southern bank of this unnamed stream in a generally easterly direction to Halfmoon pond;

Then following the southern shoreline of Halfmoon pond to a unnamed stream emptying that pond;

Then following this unnamed stream in a south easterly direction to Eastern Arm Pond also known as Deer Pond;

Then following the western shoreline of Eastern Arm Pond in a generally southerly direction to Deer Brook;

Then following the western bank of Deer Brook in a generally southerly direction to a bridge crossing Deer Brook at route 430;

Then following a line with a azimuth of $308^{\circ} 06' 47''$ with a chord of 220.57 meters, a arc of 222.13 meters and with a radius of 539.43;

Then following an azimuth of $319^{\circ} 54' 50''$ for a distance of 442.93;

Then following a line with a azimuth of $300^{\circ} 07' 58''$ with a chord of 418.89 meters, a arc of 427.33 meters and with a radius of 618.96;

Then following an azimuth of $280^{\circ} 21' 10''$ for 92.92 meters;

Then following a line with a azimuth of $272^{\circ} 48' 07''$ with a chord of 164.69 meters, a arc of 165.17 meters and with a radius of 626.64;

Then following an azimuth of $265^{\circ} 15' 17''$ for 493.65 meters;

Then following a line with a azimuth of $268^{\circ} 51' 58''$ with a chord of 123.54 meters, a arc of 123.62 meters and with a radius of 980.58;

Then following an azimuth of $272^{\circ} 28' 24''$ for a distance of 1794.74 meters;

Then following a line with a azimuth of $297^{\circ} 48' 58''$ with a chord of 325.53 meters, a arc of 336.39 meters and with a radius of 380.28;

Then following an azimuth of $323^{\circ} 09' 20''$ for a distance of 1302.31 meters;

Then following an azimuth of 323° 05' 10" for a distance of 2224.54 meters;

Then following an azimuth of 53° 01' 14" for a distance of 299.24 meters;

Then following an azimuth of 316°01'19" for a distance of 559.97 meters;

Then following an azimuth of 233°00'51" for a distance of 316.05 meters;

Then following a line with a azimuth of 287° 19' 41" with a chord of 15.33 meters, a arc of 15.33 meters and with a radius of 477.98;

Then following an azimuth of 286°24'06" for a distance of 650.83 meters to the point of commencement.

Bearings, distance and coordinates have been recorded using 3° Modified Transverse Mercator Projection (Zone 3 Newfoundland).

Area 5a Rocky Harbour Western (Coastal) Enclave

All that area of Newfoundland commencing on the shoreline of the Great Northern Peninsula (ordinary low water mark) and a point located at 5487529.294 meters North and 351393.795 meters East;

Then following an azimuth of 07° 29' 34" for a distance of 1138.869 meters;

Then following an azimuth of 07° 29' 10" for a distance of 914.29 meters;

Then following an azimuth of 350° 23' 58" for a distance of 1816.514 meters;

Then following an azimuth of 348° 56' 58" for a distance of 238.544 meters;

Then following an azimuth of 275° 08' 26" for a distance of 1692.483 meters to a point on the southern extremity of Rocky Harbour pond;

Then following the eastern shoreline of Rocky Harbour Pond to a point located at 492763.486 meters North and 348863.717 meters East;

Then following an azimuth of 323° 07' 25" for a distance of 748.810 meters;

Then following an azimuth of 323° 07' 12" for a distance of 415.915 meters;

Then following an azimuth of 323° 07' 58" for a distance of 201.769 meters;

Then following an azimuth of 323° 07' 26" for a distance of 2814.964 meters;

Then following an azimuth of 286° 22' 16" for a distance of 778.944 meters;

Then following an azimuth of 196° 25' 42" for a distance of 645.735 meters;

Then continuing on the aforementioned azimuth to the ordinary low water mark of Rocky Harbour;

Then following the shoreline in a generally southerly direction to the point of commencement.

Bearings, distance and coordinates have been recorded using 3° Modified Transverse Mercator Projection (Zone 3 Newfoundland).

(h) Management Area 6 - Corner Brook

All that area of the Island of Newfoundland bounded by a line beginning at the mouth of the Humber River in Corner Brook;

Then following a straight line to the closest point on the TCH;

Then following the TCH in a generally southerly direction to where it crosses Southwest Brook;

Then following this brook to St. George's River;

Then following the northern shoreline of St. George's River, St. George's Bay, and the coastline in a generally northerly direction to the point of commencement, but excluding the Port au Port Peninsula and excluding all offshore islands.

(i) Management Area 7 - South Brook

All that area of the Island of Newfoundland beginning at the Humber Canal Spillway Crossing;

Then following the south bank of the Humber Canal to Grand Lake;

Then following the shoreline of Grand Lake in a south westerly direction to the closest point opposite Camp 33 Road;

Then following a straight line to Camp 33 Road;

Then following Camp 3 Road to the Trans-Canada Highway (TCH);

Then following the TCH in a northeasterly direction to its intersection with the Riverside Drive Overpass;

Then following a straight line due north to the south bank of the Humber River;

Then following the south bank of the Humber River and the southeastern shoreline of Deer Lake to the point of commencement and including Glover Island.

(k) Management Area 8 - St. Georges

All that area of the Island of Newfoundland bounded by a line beginning at the mouth of Crabbes River;

Then following the coastline of St. George's Bay in a generally northerly direction to the mouth of the St. George's River;

Then following the north bank of St. George's River to the Trans Canada Highway, TCH;

Then following the TCH in a generally northerly direction to Camp 33 Road;

Then following Camp 33 Road to the southwestern extremity of Grand Lake;

Then following the shoreline of Grand Lake to the outlet of Little Grand Lake Brook;

Then following Little Grand Lake Brook to its source at the outlet of Little Grand Lake;

Then following a straight line to the western extremity of North Lake;

Then following a straight line to the western extremity of Dennis Pond;

Then following a straight line to the northwestern extremity of John Mary Pond;

Then following a straight line to the western extremity of Butt's Pond;

Then following a straight line to the northwest extremity of Hungry Grove Pond;

Then following the western shoreline of Hungry Grove Pond to its outlet in Crabbes River;

Then following the north bank of Crabbes River to the point of commencement.

(k) Management Area 9 - Auguille Mountains

All that area of the Island of Newfoundland bounded by a line beginning at the mouth of Crabbes River in the district of St. George's;

Then following the Crabbes River to the TCH bridge crossing that river;

Then following that highway in a generally southwesterly direction to the bridge crossing South Branch River, the South Branch of the Grand Codroy River;

Then following the northern and/or western bank of this river and the Grand Codroy River to its mouth;

Then following the coastline in a generally northerly direction to the point of commencement but excluding all off-shore islands.

(l) Management Area 10 - Port aux Basques

All that area of the Island of Newfoundland bounded by a line beginning at the mouth of Grand Codroy River;

Then following the northern and/or western bank of this river to the bridge crossing South Branch River, the South Branch of the Grand Codroy River;

Then following the Trans Canada Highway in a generally northeasterly direction to the Crabbes River;

Then following the northern bank of Crabbes River in a generally southeasterly direction to the stream flowing out of Hungry Grove Pond;

Then following a straight line to the head of North Bay, La Poile Bay;

Then following the coastline in a generally westerly and then northerly direction to the point of commencement.

(m) Management Area 11 - Dashwoods

All that area of the Island of Newfoundland bounded by a line beginning at North Bay, LaPoile Bay;

Then following a straight line northwest to the point where the stream flowing out of Hungry Grove Pond enters Crabbes River;

Then following the western bank of this stream and the western shoreline of Hungry Grove Pond to its northwestern extremity;

Then following a straight line northeast to the western extremity of Butt's Pond;

Then following a straight line northeast to the northwestern extremity of John Mary Pond;

Then following a straight line to the western extremity of Dennis Pond;

Then following a straight line northwest to the western extremity of North Lake;

Then following a straight line north to the mouth of Little Grand Lake Brook;

Then following the north bank of Little Grand Lake Brook and Little Grand Lake and Lewaseechjeech Brook to its northern tributary;

Then following this tributary to its headwaters pond;

Then following a straight line south to the outlet of Lloyds Lake;

Then following the southern shore of Lloyds Lake, the south bank of Lloyds River to King George IV Lake;

Then following the western shoreline of King George IV Lake to the southernmost end of King George IV Lake;

Then following a straight line southwest to the point of commencement.

(n) Management Area 12 - Buchans

All that area of the Island of Newfoundland bounded by a line beginning at the outlet of Little Grand Lake Brook;

Then following the southeastern shore of Grand Lake to the mouth of Hinds Brook;

Then following Hinds Brook to Hinds Lake;

Then following the northern shore of Hinds Lake to the southeastern extremity of Hinds Lake;

Then following a straight line to the northwestern extremity of Buchans Lake;

Then following the western shoreline of Buchans Lake to Buchans Brook;

Then following Buchans Brook to its outlet in Red Indian Lake;

Then following the northern shoreline of Red Indian Lake in first an easterly direction and then in a southerly direction to Exploits Dam;

Then following the southern shoreline of Red Indian Lake in a generally southwesterly direction to the mouth of Lloyds River;

Then following Lloyds River to the outlet of Lloyds Lake;

Then following a straight line north to the headwaters pond of the northern tributary to Lewaseechjeech Brook;

Then following this tributary stream west to the main stream of Lewaseechjeech Brook to Little Grand Lake;

Then following the northern shoreline of Little Grand Lake and Little Grand Lake Brook west to the point of commencement and the shoreline refers to high water mark.

(o) Management Area 13 - Gaff Topsails

All that area of the Island of Newfoundland bounded by a line beginning at the mouth of Hinds Brook in Grand Lake;

Then following the northeast shoreline of Grand Lake, the main Brook and southern shoreline of Sandy Lake to Kitty's Brook;

Then following Kitty's Brook in generally easterly direction to the T'Railway at Kitty's Brook;

Then following the T'Railway east to where it crosses Barney's Brook;

Then following a straight line to the northern extremity of Little Sandy Pond;

Then following the northern and eastern shoreline of little Sandy Pond to a small stream located at the southern extremity of the that pond;

Then following this stream in a southeasterly direction to its outlet in South Brook;

Then following South Brook to a point approximately 1.6 kilometres west of the Trans Canada Highway, TCH;

Then following a straight line to the closest point on the TCH;

Then following the TCH east to the Town of Badger;

Then following the shortest straight line distance from the TCH to the south bank of the Exploits River;

Then following the south bank of the Exploits River to Exploits Dam;

Then following the shoreline of Red Indian Lake in first a generally northerly direction and then a westerly direction to the mouth of Buchans Brook;

Then following the western bank of Buchans Brook to Buchans Lake;

Then following the western shoreline of Buchans Lake to its northern extremity;

Then following a straight line to the southeast extremity of Hinds Lake;

Then following the northern shoreline of Hinds Lake and the north bank of Hinds Brook to the point of commencement.

(p) Management Area 14 - Baie Verte

All that area of the Island of Newfoundland lying generally north of a line beginning at the mouth of South Brook in Halls Bay;

Then following the north bank of this brook south to the Trans Canada Highway, TCH, Bridge;

Then following the TCH in a generally westerly direction to its junction with the old TCH roadway at UTM coordinates 528,000 metres east and 5,468,100 metres north;

Then following a straight line in a northwesterly direction to its intersection with the dam on Indian Brook at UTM coordinates 527,700 metres east and 5,468,750 metres north;

Then following Indian Brook in a northwesterly direction to the mouth of a small stream entering the brook at UTM coordinates 524,300 metres east and 5,468,950 metres north approximately 1.5 kilometres southeast of Lake Buck;

Then following this stream in a northeasterly direction to its source on Upper Indian Pond;

Then following the western shoreline of Upper Indian Pond to its western extremity and the mouth of a small stream at UTM coordinates 523,950 metres east and 5,484,000 metres north;

Then following this brook in a northwesterly direction to a point on an unnamed pond with UTM coordinates 520,375 metres east and 5,486,500 metres north;

Then following a straight line to the southern extremity of Little Chouse Brook Pond;

Then following the western shoreline of this pond to the outflow of Little Chouse Brook;

Then following this brook to its outflow in White Bay;

Then following the coastline of White Bay around the Baie Verte Peninsula to Green Bay and following the coastline of Green Bay and Notre Dame Bay to the point of commencement. All offshore islands excluded.

(q) Management Area 15 - Twin Lakes

All that area of the island of Newfoundland bounded by a line beginning at the mouth of South Brook in Halls Bay;

Then following the coastline of Notre Dame Bay in a generally easterly direction to the mouth of the Exploits River in the Bay of Exploits;

Then following the south bank of the Exploits River in a generally westerly direction to Badger;

Then following the Trans Canada Highway in a generally northerly direction to the point where it crosses South Brook at Halls Bay;

Then following the western bank of South Brook to the point of commencement. Excluding all offshore islands, except Pilley's Island, Triton Island, Long Island and Sunday Cove Island.

(r) Management Area 16 - Sandy Badger

All that area of the Island of Newfoundland bounded by a line beginning at the mouth of Noel Paul's Brook in the Exploits River;

Then following the south bank of the Exploits River in an easterly direction to the mouth of Great Rattling Brook;

Then following the west bank of Great Rattling Brook to its first tributary;

Then following a straight line to the eastern extremity of Island Pond, 4.8 kilometres southeast of Grand Falls;

Then following a straight line in a southwesterly direction to the eastern extremity of Pistol Lake;

Then following a straight line in a southeasterly direction to the pond on the headwaters of the South Great Rattling Brook;

Then following a straight line west to the northern extremity of Gulp Pond;

Then following a straight line westerly to the northern extremity of Island Pond, west of Crooked Lake;

Then following a straight line northeasterly to the outlet of Noel Paul's Steady;

Then following Noel Paul's Brook to the point of commencement.

(s) Management Area 17 - Millertown

All the area of the Island of Newfoundland beginning at the northeast extremity of Lloyds Lake;

Then following the eastern bank of Lloyds River to Red Indian Lake;

Then following the eastern shoreline of Red Indian Lake to Exploits Dam;

Then following the south bank of the Exploits River to the mouth of Noel Paul's Brook;

Then following the western bank of Noel Paul's Brook to the outlet of Noel Paul's Steady;

Then following a straight line in a southwesterly direction to the northern extremity of Island Pond;

Then following the eastern shoreline of Island Pond to its southern extremity;

Then following a straight line in a generally western direction to the southern extremity of Blizzard Pond;

Then following a straight line in a northwesterly direction to the point of commencement and the shoreline refers to high water mark.

(t) Management Area 18 - Granite Lake

All that area of the Island of Newfoundland bounded by a line beginning at the northeastern extremity of Lloyds Lake;

Then following a straight line to the southern extremity of Blizzard Pond;

Then following a straight line to the southern extremity of Island Pond;

Then following a straight line to the southern extremity of Cold Spring Pond;

Then following a straight line to the southern extremity of Wolf Lake;

Then following a straight line to the northern extremity of Top Pond;

Then following a straight line to the southern extremity of Buck Lake;

Then following a straight line to the closest point of the Burgeo Highway;

Then following the Burgeo Highway in a northerly direction to the bridge crossing Lloyds River;

Then following Lloyds River and the southern shoreline of Lloyds Lake to the point of commencement.

(u) Management Area 19 - Grey River West

All that area of the Island of Newfoundland commencing at North Bay;

Then following a straight line in a generally northeasterly direction to the southern extremity of King George IV Lake;

Then following the east shoreline of King George IV Lake to Lloyds River;

Then following Lloyds River to where it crosses the Burgeo Highway;

Then following the Burgeo Highway in a southerly direction to the closest point of Buck Lake;

Then following a straight line in an easterly direction to the southwestern extremity of Buck Lake;

Then following a straight line to the northwestern extremity of Top Pond;

Then following a straight line in a generally eastern direction for a distance of 16 kilometres to the western bank of White Bear River;

Then following the western bank of White Bear River in a southerly direction to White Bear Bay;

Then following the coast line in a generally westerly direction to the point of commencement but excluding all off-shore islands.

(v) Management Area 20 - Round Pond

All that area of the Island of Newfoundland beginning at the mouth of d'Espoir Brook in North Bay, Bay d'Espoir;

Then following a straight line to the southern extremity of Cold Spring Pond;

Then following a straight line to the southeastern extremity of Island Pond, west of Crooked Lake;

Then following the eastern shoreline of Island Pond to its northern extremity;

Then following a straight line in an easterly direction to the northern extremity of Gulp Pond;

Then following a straight line in an easterly direction to the pond on the headwaters of South Great Rattling Brook;

Then following a straight line in a southeasterly direction to the Northwest Gander River at the point where the river which runs out of Coy Pond enters it;

Then following the Northwest Gander River in a southwesterly direction to the point where Stormy Brook enters into it;

Then following this brook to a small pond at its headwaters;

Then following a straight line to the southwestern extremity of Matthew's Pond;

Then following a straight line to the southeastern arm of Long Pond Reservoir, the dam;

Then following the southeastern shoreline of Long Pond Reservoir to its southern extremity;

Then following Salmon River to its mouth in East Bay, Bay D'Espoir;

Then following the coast line to the point of commencement, but excluding all offshore islands.

(w) Management Area 21 - Rattling Brook

All that area of the Island of Newfoundland bounded by a line beginning at the eastern extremity of Island Pond;

Then following a straight line in a northeasterly direction to the first western tributary of Great Rattling Brook;

Then following the west bank of Great Rattling Brook to its mouth in the Exploits River;

Then following the southern bank of the Exploits River and Bay of Exploits to the mouth of Rattling Brook;

Then following Rattling Brook to its outlet from Rattling Lake;

Then following the southern shoreline of Rattling Lake to the stream flowing from Upper Christmas Pond;

Then following this stream to Upper Christmas Pond and the southern shoreline of the pond to the main channel of the stream flowing from Lewis Lake;

Then following this channel to its source at Lewis Lake, and the southern shoreline of Lewis Lake to a stream entering said Lake from Little Dowd Pond;

Then following this stream to Little Dowd Pond;

Then following the shoreline of Little Dowd Pond to the mouth of the stream entering from Dowd Pond;

Then following this stream and the shoreline of Dowd Pond to the mouth of a brook entering Dowd Pond at its south-eastern extremity;

Then following a straight line to the mouth of Great Gull River on the Northwest Gander River;

Then following the south bank of the Northwest Gander River to the mouth of a river which runs out of Coy Pond;

Then following a straight line in a westerly direction to a small pond on the headwaters of South Great Rattling Brook;

Then following a straight line in a northwesterly direction to the eastern extremity of Pistol Lake;

Then following a straight line to the point of commencement.

(x) Management Area 22 – Lewisporte

All that area of the Island of Newfoundland bounded by a line beginning at the eastern abutment of the Trans Canada Highway, TCH, Bridge crossing Rattling Brook;

Then following the eastern bank of Rattling Brook to the Bay of Exploits;

Then following the eastern shoreline of the Bay of Exploits and Gander Bay to the mouth of Gander River, to the T-Railway bridge crossing the Gander River near Glenwood;

Then following the main line of the railway for approximately 1.6 kilometres west to the intersection with the transmission line;

Then following the transmission line in a generally westerly direction to its intersection with the brook flowing from Little Dowd Pond;

Then following this brook to Lewis Lake and the southern shoreline of this Lake to the outlet of a stream flowing to Upper Christmas Pond;

Then following this stream and the shoreline of Upper Christmas Pond to the mouth of a stream exiting this pond into Rattling Lake;

Then following the southern shoreline of this Lake to the outflow of Rattling Brook from Rattling Lake;

Then following Rattling Brook to the point of commencement, but excluding all offshore islands except Thwart, Chapel, New World, Upper Black, Farmers, Coal All, Dunnage, Birchy, and Sivier Islands, which are included in this management area.

(y) Management Area 23 - Bonavista North

All that area of the Island of Newfoundland bounded by a line beginning at the mouth of Gambo Brook in Freshwater Bay, Bonavista Bay;

Then following the western bank of the Gambo Brook to the Trans Canada Highway, TCH;

Then following the TCH in a generally westerly direction to the eastern end of Gander Lake;

Then following a straight line to the closest point of Gander Lake;

Then following a line equidistant from the northern and southern shorelines of Gander Lake to the point having coordinates 48°55' north and 54°55' west;

Then turning in a generally northerly direction to follow a line equidistant from the eastern and western shorelines of Gander Lake and the eastern and western banks of the Gander River to the centre of the T'Railway bridge crossing the Gander River;

Then following the Railway to the eastern bank of the Gander River;

Then following the eastern bank of the Gander River to its mouth in Gander Bay;

Then following the eastern coastline of Gander Bay, the coastline of Hamilton Sound and the coastline of Notre Dame Bay in a generally easterly direction to Cape Freels;

Then following the coastline of Bonavista Bay in a generally southerly direction to the point of commencement but excluding all offshore islands.

Note To Hunters

Hunting is prohibited on the Gander International Airport property as described below:

Gander International Airport Property

All that parcel of land starting on the north shore of Gander Lake at a point, UTM coordinates 675,566 metres east and 5,422,746 metres north, due south of the intersection of Cooper Boulevard with the TCH;

Then continuing east on the shoreline of Gander Lake to the Town of Gander boundary;

Then following the boundary in a generally northerly direction to its intersection with the TCH;

Then continuing west on the TCH to a point closest to the southeastern corner of the airport security fence;

Then following the fence in a generally northerly direction to its intersection with Circular Road, next to Hangar 21;

Then continuing west on Circular Road to the intersection of the Boot Pond Road;

Then from the Boot Pond Road, continuing west on the T'Railway, to the eastern boundary of the Gander Industrial Park;

Then running in a generally northwesterly direction along the eastern boundary of the adjoining properties of the Industrial Park, the Town of Gander Cemetery and the Department of National Defence housing site, around to Cooper Boulevard;

Then south on Cooper Boulevard to its intersection with the TCH;

Then due south of the intersection to the point of commencement.

(z) Management Area 24 - Northwest Gander

All that area of the Island of Newfoundland bounded by a line beginning at the mouth of a small stream entering Dowd Pond at its southeastern extremity;

Then following the shoreline of this lake to the outlet of a stream exiting Dowd Pond into Little Dowd Pond;

Then following this stream to Little Dowd Pond and the shoreline of said lake to a stream outlet at its northwestern extremity;

Then following this stream to its intersection with the Newfoundland and Labrador Hydro Transmission line;

Then following the transmission line in a generally easterly direction to its intersection with the T'Railway approximately 1.6 kilometres west of Glenwood;

Then following the T'Railway to the center of the T'Railway bridge crossing the Gander River at Glenwood;

Then following a line equidistant from the eastern and western banks of the Gander River and the eastern and western shoreline of Gander Lake to the point having coordinates 48°55' north and 54°55' west

Then following a straight line to the eastern bank of the mouth of the Southwest Gander River;

Then following the eastern bank of the Southwest Gander River to the mouth of Dennis Brook;

Then following a straight line to the mouth of Gull River in the Northwest Gander River;

Then following a straight line to the point of commencement.

(aa) Management Area 25 - Bay D'Espoir

All that area of the Island of Newfoundland bounded by a line beginning at the mouth of Salmon River, East Bay, Bay D'Espoir;

Then following this river in a northerly direction to the southern extremity of Long Pond Reservoir;

Then following the southeastern shoreline of Long Pond Reservoir to its southeastern arm of Long Pond Reservoir, Dam;

Then following a straight line northeast to the southwestern extremity of Matthew's Pond;

Then following a straight line north to the headwaters of a pond on Stormy Brook;

Then following this brook to its outlet in Northwest Gander River;

Then following the south bank of the Northwest Gander River to Great Gull River;

Then following Great Gull River to the northern extremity of Great Gull Lake;

Then following the eastern shoreline of Great Gull Lake to its southern extremity;

Then following a straight line south to a point on the western bank of the Bay du Nord River approximately 5.5 kilometres north of Anmalijek Lake to the point where the second tributary enters this river from the east;

Then following the western bank of the Bay du Nord River to Anmalijek Lake;

Then following the western shoreline of Anmalijek Lake to its southwestern extremity;

Then following a straight line southwest to the northeastern extremity of Train Hill Pond;

Then following a straight line southeast to Smokey Falls on the Bay du Nord River;

Then following the western bank of the Bay du Nord River to its mouth in Belle Bay, Fortune Bay;

Then following the coastline of Belle Bay, Great Bay, Connaigre Bay, Hermitage Bay and Bay D'Espoir to the point of commencement but excluding all offshore islands except Long Island, Bois Island and Chapel Island.

(bb) Management Area 26 - Jubilee Lake

All that area of the Island of Newfoundland bounded by a line beginning at the west bank of the mouth of the Bay du Nord River in Belle Bay, Fortune Bay;

Then following the west bank of the Bay du Nord River to Smokey Falls;

Then following a straight line to northeastern extremity of Train Hill Pond;

Then following a straight line to the southwestern extremity of Anmalijek Lake;

Then following the western shoreline of Anmalijek Lake to the point where the Bay du Nord River enters it;

Then following the western bank of the Bay du Nord River to the point where its second tributary enters from the east, approximately 5.5 kilometres north of Anmalijek Lake;

Then following a straight line north to the southern extremity of Great Gull Lake;

Then following a straight line southeast to Mt. Sylvester;

Then following a straight line east to the northwestern extremity of Norseman's Pond;

Then following a straight line east to the northeastern extremity of Norseman's Pond;

Then following a straight line in southerly direction to a high point of land, elevation 852 metres, east of Norseman's Pond with UTM coordinates 692,075 metres east and 5,337,650 metres north;

Then following a straight line west to the southeastern extremity of Norseman's Pond;

Then following a straight line southwest to Friar Head, Fortune Bay;

Then following the coastline in a generally westerly direction the coastline of Fortune Bay to the point of commencement, but excluding all offshore islands except Rencontre Island.

(cc) Management Area 27 - Terra Nova

All that area of the Island of Newfoundland bounded by a line beginning at the mouth of Great Gull River on the Northwest Gander River;

Then following a straight line east to the mouth of Dennis Brook on the Southwest Gander River;

Then following a straight line east to the western extremity of the pond at the headwaters of Riverhead Brook;

Then following the northern shoreline of this pond to its outlet;

Then following the north bank of Riverhead Brook to its mouth in Gambo Pond;

Then following the southern shoreline of Gambo Pond to the second tributary of Parsons Pond Brook where it enters Gambo Pond;

Then following the west bank of Parsons Pond Brook to its outlet from Parsons Pond;

Then following a straight line east to the western extremity of Maccles Lake;

Then following the southern shoreline of Maccles Lake to the mouth of a small stream flowing into the eastern end of that lake at Miller's Angle at an approximate location of 48° 36' 36" north latitude and 54° 7' 30" west longitude;

Then following that stream to its intersection with the T'Railway;

Then following the T'Railway in a generally southerly direction to its intersection with Salmon River;

Then following upstream the west bank of the Salmon River to Salmon Pond;

Then following the western shoreline in Salmon Pond to the stream outlet at its southwestern extremity;

Then following this tributary upstream in a generally southwesterly direction to the most northwesterly point of a small pond located at 48° 19' 7" north latitude and 54° 22' 30" west longitude;

Then following that stream to Saddle Pond;

Then following the southern shoreline of Saddle Pond to its eastern extremity;

Then following in a straight line in a generally southwesterly direction to the western extremity of Norseman's Pond;

Then following a straight line to Mount Sylvester;

Then following a straight line to the southern extremity Great Gull Lake;

Then following the eastern shoreline of Great Gull Lake to its outlet in Great Gull River;

Then following Great Gull River to the point of commencement.

(dd) Management Area 28 - Black River

All that area of the Island of Newfoundland bounded by a line beginning at Friar Head in Fortune Bay;

Then following a straight line to the southeastern end of Norseman's Pond;

Then following a straight line in a northeasterly direction to a point of land, elevation 852 metres, east of Norseman's Pond with UTM coordinates 692,075 metres east and 5,337,650 metres north;

Then following a straight line in a northerly direction to the northeastern extremity of Norseman's Pond;

Then following a straight line to the western extremity of Norseman's Pond;

Then following a straight line in a generally northeasterly direction to the eastern extremity of Saddle Pond;

Then following the southern shoreline of Saddle Pond to the stream at its northern extremity;

Then following this stream in a generally northeasterly direction to the most northwesterly point of a small pond located at 48° 19' 7" north latitude and 54° 22' 30" west longitude;

Then following in a generally northeasterly direction a stream flowing from the outlet of Salmon Pond at the southwestern extremity of that pond;

Then following the west bank of Salmon Pond and Salmon River in a generally northeasterly direction to its intersection with the T'Railway;

Then following the T'Railway in a generally northerly direction to a small stream flowing into the eastern end of Maccles Lake at Miller's Angle at an approximate location of 48° 36' 40" north latitude and 54° 07' 18" west longitude;

Then following downstream the eastern bank of that stream to Maccles Lake;

Then following the southern shoreline of Maccles Lake in a generally westerly direction to the western extremity of that lake;

Then following a straight line to the outlet of Parsons Pond;

Then following the eastern bank of this brook to its mouth in Gambo Pond;

Then following the southern shoreline of Gambo Pond and the south bank of Gambo River to its mouth in Freshwater Bay, Bonavista Bay;

Then following the coastline of Bonavista Bay and the boundary of Terra Nova National Park to the mouth of Southwest River, Port Blandford;

Then following the western bank of the Southwest River to the TCH;

Then following the TCH in a generally southerly direction to its intersection with the road to Come-by-Chance;

Then following the coastline of Placentia Bay to the mouth of Piper's Hole River;

Then following the western bank of Piper's Hole River to the Burin Peninsula Highway, Route 210;

Then following this highway and Route 211 to Terrenceville;

Then following the coastline of Fortune Bay to the point of commencement, but excluding all offshore islands and excluding all parts of Terra Nova National Park.

(ee) Management Area 29 - Bonavista Peninsula

All that area of the Island of Newfoundland bounded by a line beginning at the TCH Bridge crossing Southwest River, Port Blandford;

Then following the western bank of Southwest River to its mouth in Clode Sound;

Then following the shoreline of Bonavista Bay and Trinity Bay to the community of Sunnyside;

Then following the road leading from Sunnyside to the TCH;

Then following the TCH to the point of commencement excluding Random Island, Area 47, and all other offshore islands.

(ff) Management Area 30 - Burin Peninsula Knee

All that area of the Island of Newfoundland bounded by a line beginning at the western abutment of the bridge on Route 210 crossing Piper's Hole River;

Then following the western bank of Piper's Hole River to the coastline;

Then following the coastline of Placentia Bay in a generally southwesterly direction to Mortier Bay;

Then following the coastline of Mortier Bay and Southwest Arm in a generally westerly direction to the point where Route 210 crosses Southwest Arm;

Then following Route 210 in a generally northwesterly direction to its intersection with Route 213;

Then following Route 213 in a generally northwesterly direction to Garnish;

Then following the shortest straight line distance of the coastline to Fortune Bay;

Then following the coastline of Fortune Bay in a generally northeasterly direction to Terrenceville;

Then following Routes 211 and 210 to the point of commencement but excluding all offshore islands, except Sound Island, Woody Island and Bar Haven Island.

(gg) Management Area 31 - Placentia

All that area of the Island of Newfoundland beginning at Long Harbour;

Then following the Long Harbour Road, Route 202, at its closest point to Long Harbour to its intersection with the TCH;

Then following the Chapel Arm Highway to Chapel Arm;

Then following the coastline of Chapel Arm, Spread Eagle Bay, Dildo Bay, to Dildo South;

Then following the Highway, Route 80, in a generally southerly direction to Whitbourne;

Then following the Markland Road, Route 81, to its intersection with the Argentia Road, Route 91;

Then following the Argentia Road in a generally westerly direction to Southeast Arm, Placentia;

Then following the shoreline of Southeast Arm and Placentia Bay in a generally northerly direction to the point of commencement but excluding all offshore islands and the Argentia Military Reservation described as follows:

Argentia Military Reservation

All that area of the Avalon Peninsula beginning at a point on the south shoreline of Placentia Sound, near its easterly extremity, that point being a bronze disc set in concrete marked "Boundary Line - U.S. Military Reservation" and designated here as point A-I at approximately 47° 52' 19" north latitude and 53° 52' 18" west longitude, that point being the principal point of beginning;

Then south 31° 06' 57.27" east 661.76 metres;

Then south 18° 32' 54.72" east 442.26 metres to the north line of the right-of-way of the Old Newfoundland Railway;

Then following the north line of the right-of-way of the Old Newfoundland Railway southerly and westerly to a point which is south 63° 19' 28.74" west 6,747.72 metres from the last described point;

Then south $63^{\circ} 33' 52.11''$ west 342.18 metres;

Then south $85^{\circ} 41' 28.72''$ west 2572.66 metres;

Then south $66^{\circ} 03' 03.92''$ west 569.35 metres to the south-east corner of Lot No. 86 in the Freshwater development as shown on plan titled "FRESHWATER SETTLEMENT-PLACENTIA" dated December 1941 by the Department of Public Works - Roads Division, Newfoundland Government;

Then along the south line of Lot No. 86, south $48^{\circ} 55' 40.71''$ west 121.92 metres to the southwest corner of Lot No. 86 and the east line of a road right-of-way in the Freshwater development;

Then along the east line of the road right-of-way north $41^{\circ} 04' 19.29''$ west 55.58 metres north $25^{\circ} 04' 19.29''$ west 272.36 metres to the northwest corner of Lot No. 107 in the Freshwater development;

Then along the north line of the Lot No. 107 north $64^{\circ} 55' 40.71''$ east 121.92 metres to the northeast corner of the Lot No. 107;

Then north $25^{\circ} 04' 19.29''$ west 494.16 metres;

Then south $80^{\circ} 52' 24.78''$ west 825.79 metres to a bronze disc set in concrete and marked "Moll" - U.S. Navy Hydrographic Office";

Then south $80^{\circ} 52' 24.78''$ west 44.20 metres more or less to the shoreline of Placentia Bay;

Then northerly following the sinuosities of the shoreline of Placentia Bay, around the entire Argentia Peninsula and the south shore of Argentia Harbour and Placentia Sound to the principal point of beginning, all bearings are true.

(hh) Management Area 32 - Cape Shore

All that area of the Island of Newfoundland beginning at Southeast Arm, Placentia Bay;

Then following the Argentia Highway, Route 91, in a generally easterly direction to Colinet;

Then following the western shoreline of Colinet Harbour, North Harbour, the western shoreline of St. Mary's Bay and the eastern shoreline of Placentia Bay, to the point of commencement but excluding all offshore islands.

(ii) Management Area 33 - Salmonier

All that area of the Island of Newfoundland beginning at Colinet;

Then following the Markland Highway, Route 81, in a generally northerly direction to Whitbourne;

Then following the Whitbourne Highway to where it intersects with the TCH;

Then following the TCH in a generally easterly direction to where it intersects with the Salmonier line;

Then following the Salmonier Line, Route 90, in a generally southwesterly direction to Salmonier Arm;

Then following the coastline to the point of commencement but excluding all offshore islands.

(jj) Management Area 34 - Bay de Verde

All that area of the Island of Newfoundland beginning at Dildo South;

Then following the eastern shoreline of Trinity Bay, the western shoreline of Conception Bay to North Arm, Holyrood;

Then following the North Arm River to where it intersects with the Salmonier Line, Route 90;

Then following Salmonier Line in a southwesterly direction to where it intersects with the TCH;

Then following the TCH in a generally westerly direction to where it intersects with Route 80 leading to Dildo South;

Then following this road, Route 80, to the point of commencement but excluding all offshore islands.

(kk) Management Area 35 - St. John's

All that area of the Island of Newfoundland beginning at North Arm, Holyrood, mouth of North Arm River;

Then following the eastern shoreline of Conception Bay to Cape St. Francis;

Then following the shoreline of Pouch Cove, Torbay, Logy Bay, St. John's Bay, Motion Bay and the southern shore of the Avalon Peninsula to the mouth of Pierre's Brook in Witless Bay;

Then following the north bank of Pierre's Brook to Route 10;

Then following Route 10 to its intersection with Route 13;

Then following Route 13 to where it intersects the Trans Canada Highway, TCH;

Then following the TCH in a generally westerly direction to where it intersects with the Salmonier Line, Route 90;

Then following the Salmonier Line, Route 90, in a generally northeasterly direction to where the North Arm River crosses the Salmonier Line;

Then following the North Arm River to the point of commencement but excluding all offshore islands.

(ll) Management Area 36 - Southern Shore

All that area of the Island of Newfoundland bounded by a line beginning at Salmonier Arm;

Then following the Salmonier Line, Route 90 in a generally northeasterly direction to where it intersects with the TCH;

Then following the TCH in a generally easterly direction to its intersection with Route 13, the Witless Bay Line;

Then following Route 13 to its intersection with Route 10;

Then following Route 10 in a southerly direction to the north bank of Pierre's Brook;

Then following the north bank of Pierre's Brook to its mouth in Witless Bay;

Then crossing the mouth of Pierre's Brook and following the coastline of Witless Bay in a southerly direction to Trepassey Bay;

Then following the coastline of Trepassey Bay and St. Mary's Bay to the point of commencement but excluding all offshore islands.

(mm) Management Area 37 - Grey River East

All that area of the Island of Newfoundland beginning at the mouth of White Bear River in White Bear Bay;

Then following this river in a northerly direction to the boundary line of Area 18, Granite Lake, where it intersects that river;

Then following a straight line in an easterly direction to the southern extremity of Wolf Lake;

Then following a straight line in a generally northeasterly direction to the southern extremity of Cold Spring Pond;

Then following a straight line to the mouth of D'Espoir Brook in North Bay, Bay D'Espoir;

Then following the coastline in a generally westerly direction to the point of commencement, but excluding all offshore islands.

(nn) Management Area 38 - Burin Peninsula Foot

All that area of the Island of Newfoundland bounded by a line beginning at the intersection of Routes 210 and 213, between Garnish and Marystown;

Then following Route 210 to the point where it crosses Southwest Arm;

Then following the coastline of Southwest Arm, Mortier Bay, Placentia Bay and Fortune Bay to Garnish;

Then following the shortest straight line distance to Route 213;

Then following Route 213 to the point of commencement but excluding all offshore islands.

(oo) Management Area 39 - Cloud River

All that area of the Island of Newfoundland beginning at Torrent Cove in Canada Bay;

Then following a straight line in a generally northwesterly direction to an outflow on an unknown pond with UTM coordinates 528,611 metres east, 5,644,817 metres north;

Then following the southern bank on this tributary downstream and in a northwesterly direction to its outflow at a small pond on the main stem of East Castor Brook with UTM coordinates 522,047 metres east, 5,647,270 metres north;

Then following the main stem of East Castor Brook in a southwesterly direction to its intersection with East Castor River,

Then following East Castor River to its outflow in Leg Pond;

Then following the northern shoreline of Leg Pond in an easterly direction to its most easterly point where a brook flows into Leg Pond;

Then following the eastern shore of the brook flowing into Leg Pond from the south to its headwaters Pond;

Then following a straight line in a southerly direction to Rocky Stent Pond on the headwaters of the Soufflets River, at UTM co-ordinates 518,412 metres east and 5,596,488 metres north;

Then following a straight line to Williamsport at the head of Fourche Harbour;

Then following the coastline in a generally northerly direction to the point of commencement, excluding all offshore islands and excluding Area 39A.

(pp) Management Area 39A - Cloud River

All that area of the Island of Newfoundland commencing at a point on Cloud River UTM co-ordinates 5,627,100 metres north and 5,502,000 metres east;

Then following a straight line to Torrent Cove, Canada Bay;

Then following the coastline of Canada Bay the coastline of the Northern Peninsula in a southerly direction to Williamsport at the head of Fourche Harbour;

Then following a straight line in a northerly direction to a point on Cloud River UTM co-ordinates 5,626,500 metres north and 537,100 metres east;

Then following Cloud River in a generally easterly direction to the point of commencement.

(qq) Management Area 40 - Conche

All that area of the Island of Newfoundland beginning at Cape Daumalen in Canada Bay;

Then following the shoreline in a northeasterly direction to the mouth of West Brook in Hare Bay;

Then following a straight line in a southwesterly direction to its intersection with Belvie Brook at UTM coordinates 553,500 metres east and 5,670,050 metres north;

Then following Belvie Brook in a generally westerly direction to a tributary at UTM coordinates 550,500 metres east and 5,670,500 metres north;

Then following this tributary to its mouth at an unnamed lake, UTM coordinates 549,000 metres east and 5,669,400 metres north;

Then following the eastern shoreline of this lake to the mouth of a small stream entering the lake at its southeastern extremity;

Then following this stream to its headwaters pond;

Then following a straight line due south to its intersection with the first forest access road;

Then following this forest access road in a westerly, then a southerly direction, to an intersection at UTM coordinates 546,650 metres east and 5,665,350 metres north;

Then following this road in a westerly direction to an intersection east of Muskrat Pond with UTM coordinates 536,380 metres east and 5,662,180 metres north;

Then following the north branch of this road to its intersection with a small stream flowing into Muskrat Pond;

Then following the south shore of this stream to Muskrat Pond and the south bank of this pond to its outflow brook;

Then following this brook to its mouth in Round Lake;

Then following the southern and western shorelines of Round Lake to the narrows where it enters Ten Mile Lake;

Then following the shoreline of Ten Mile Lake in a southwesterly direction to the mouth of Rose's Feeder;

Then proceeding up Rose's Feeder to Feeder Pond;

Then following the eastern shoreline of Feeder Pond to its southern end;

Then following a straight line in a southwesterly direction to the northern end of Castor Tilt Pond and along the west bank of this tributary to its outflow in East Castor Pond;

Then following the western shoreline of East Castor Pond to its outflow and along the west bank of this flow to its intersection with a tributary on a small pond on the main stem of East Castor Brook with UTM coordinates 522,047 metres east, 5,647,270 metres north;

Then following upstream the southern bank of this tributary in an easterly direction to an outflow on a unknown pond with UTM coordinates 528,611 metres east, 5,644,817 metres north;

Then following a straight line in a generally southeasterly direction to Torrent Cove;

Then following the shoreline of Chimney Bay to the point of commencement but excluding all offshore islands.

(rr) Management Area 41 - Sheffield Lake

All that area of the Island of Newfoundland bounded by a line beginning at the mouth of Kitty's Brook in Sandy Lake;

Then following the shoreline of Sandy Lake, and Birchy Lake to the eastern extremity of Birchy Lake;

Then following a straight line to the closest point on the TCH;

Then following the TCH in a generally easterly and then southerly direction to a point opposite the confluence of South Brook and the stream draining Gull Pond, this point being approximately 16 kilometres south of the junction of the TCH and Route 380;

Then following the shortest straight line distance to that confluence;

Then crossing South Brook in a straight line;

Then following the western bank of South Brook to the tributary stream flowing from Little Sandy Pond;

Then following the northern bank of this stream to the outlet of Little Sandy Pond;

Then following the eastern and northern shoreline of Little Sandy Pond to its northwestern extremity;

Then following a straight line in a generally westerly direction to where Barneys Brook crosses the T'Railway;

Then following the T'Railway to its intersection with Kitty's Brook;

Then following Kitty's Brook to the point of commencement.

(ss) Management Area 42 - Gambo

All that area of the Island of Newfoundland bounded by a line commencing at the mouth of Dennis Brook on the Southwest Gander River;

Then following the south bank of the Southwest Gander River to its mouth in Gander Lake;

Then following a straight line to the point having coordinates 48° 55' north and 54° 55' west;

Then following a line that is equidistant from the northern and southern shore lines of Gander Lake in a generally easterly direction to the eastern extremity of Gander Lake;

Then following in a straight line to the closest point of the TCH;

Then following the TCH to the bridge crossing Gambo Brook;

Then following the west bank of Gambo Brook, the southern shoreline of Gambo Pond and the north bank of Riverhead Brook to the pond near its headwaters;

Then following the north shore line of this pond to its western extremity;

Then following a straight line to Dennis Brook and the point of commencement.

(tt) Management Area 43 - Port au Port

All that area of the Island of Newfoundland known as the Port au Port Peninsula but excluding all offshore islands.

(uu) Management Area 44 - Bellevue

All that area of the Island of Newfoundland bounded by a line beginning at the high water mark at the head of Come By Chance Bay;

Then following the coastline in a southerly direction to the nearest point opposite Mount Arlington Heights Road east of Long Harbour;

Then following the shortest route to that road;

Then following that road to its intersection with the Long Harbour Road;

Then following the Long Harbour Road in northeasterly direction to its intersection with the Trans Canada Highway, TCH;

Then crossing the TCH to Chapel Arm Road;

Then following Chapel Arm Road to its intersection with a gravel road at the southwest end of Chapel Arm;

Then following the high water mark along the coastline to the head of Bull Arm;

Then following a straight line to the Sunnyside Road;

Then following this road in a southwesterly direction to its intersection with the TCH;

Then following the Come By Chance Road to a point opposite the head of Come By Chance Bay;

Then following a straight line to the point of commencement but excluding all offshore islands.

(vv) Management Area 45 - Ten Mile Brook

All that area of the Island of Newfoundland beginning at the community of Eddies Cove West;

Then following the coastline in a generally northerly direction to the closest point near the junction of the Northern Peninsula Highway and the Viking Trail;

Then following the Viking Trail in a generally easterly direction to a point on the Viking Trail opposite the Access Road to St. Anthony Airport;

Then following a straight line in a generally southeasterly direction to the mouth of Broiling Brook in Hare Bay;

Then following the coastline of Hare Bay in a southerly direction to the mouth of West Brook;

Then following a straight line in a southwesterly direction to its intersection with Belvie Brook at UTM coordinates 553,500 metres east and 5,670,050 metres north;

Then following Belvie Brook in a generally westerly direction to a tributary at UTM coordinates 550,500 metres east and 5,670,500 metres north;

Then following this tributary to its mouth at an unnamed lake, UTM coordinates 549,000 metres east and 5,669,400 metres north;

Then following the eastern shoreline of this lake to the mouth of a small stream entering the lake at its southeastern extremity;

Then following this stream to its headwaters pond;

Then following a straight line due south to its intersection with the first forest access road;

Then following this forest access road in a westerly, then a southerly direction, to an intersection at UTM coordinates 546,650 metres east and 5,665,350 metres north;

Then following this road in a westerly direction to an intersection east of Muskrat Pond with UTM coordinates 536,380 metres east and 5,662,180 metres north;

Then following the north branch of this road to its intersection with a small stream flowing into Muskrat Pond;

Then following the south shore of this stream to Muskrat Pond and the south bank of this pond to its outflow brook;

Then following this brook to its mouth in Round Lake;

Then following the southern and western shore of Round Lake to the narrows where it enters Ten Mile Lake;

Then following the shoreline of Ten Mile Lake in a south-westerly direction to the mouth of Rose's Feeder;

Then proceeding up Rose's Feeder to Feeder Pond;

Then following the eastern shore of Feeder Pond to its southern end;

Then following a straight line in a southerly direction to the northern end of Castor Tilt Pond and along the west bank of this tributary to its outflow in East Castor Pond;

Then following the western shoreline of East Castor Pond to its outflow and along the west bank of this outflow to its intersection a small pond on the main stem of East Castor Brook with UTM coordinates 522,047 metres east, 5,647,270 metres north;

Then following the main stem of East Castor Brook in a southwesterly direction to its intersection with East Castor River;

Then following East Castor River upstream to its outflow at Leg Pond;

Then following the northern shoreline of Leg Pond in an easterly direction to its most easterly point where a brook flows into Leg Pond;

Then following the eastern shore of the brook flowing into Leg Pond from the south to its headwaters pond;

Then following the eastern shoreline of said pond to its southeastern extremity;

Then following a straight line in a southerly direction to Rocky Stent Pond at the headwaters of Soufflets River, at UTM coordinates 537,100 metres east and 5,626,500 metres north;

Then following a straight line in a generally westerly direction to the point of commencement, but excluding all offshore islands.

(ww) Management Area 47 - Random Island

All that area of the Island of Newfoundland in Trinity Bay known as Random Island excluding all offshore islands.

©Earl G. Tucker, Queen's Printer



NEWFOUNDLAND AND LABRADOR REGULATION 95/09

*Open Season Big Game Moose Hunting Order,
Labrador, 2009-2010*
under the
Wild Life Regulations
and the
Wild Life Act

(Filed November 18, 2009)

Under the authority of sections 38 and 114 of the *Wild Life Regulations* and the *Wild Life Act*, I make the following Order.

Dated at St. John's, November 10, 2009.

Charlene Johnson
Minister of Environment and Conservation

ORDER

Analysis

- | | |
|---------------------------|-------------------|
| 1. Short title | 6. Prohibition |
| 2. Prohibition | 7. Sunday hunting |
| 3. Moose management areas | 8. Repeal |
| 4. Open Season | |
| 5. Bag limit | Schedule |

Short title

1. This Order may be cited as the *Open Season Big Game Moose Hunting Order, Labrador, 2009-2010*.

*Open Season Big Game Moose Hunting Order,
Labrador, 2009-2010*

95/09

Prohibition	2. The taking of moose is prohibited throughout Labrador, except as provided for in this Order.	
Moose management areas	3. The moose management areas are as described in the Schedule.	
Open Season	4. The open seasons for moose hunting shall be	
	Area No.	Season Dates
	48, 51, 52, 53, 57 and 58	September 12, 2009-January 3, 2010
	49, 50, 53A, 54, 55, 56 and 85	September 12, 2009-March 14, 2010
	59 and 60	September 5, 2009-March 14, 2010
Bag limit	5. The bag limit shall be one moose per licence.	
Prohibition	6. A person shall not transport or possess any firearms under the authority of a valid game licence without being in possession of an outdoor identification card, or non-resident equivalent card, issued to that person.	
Sunday hunting	7. Hunting with a firearm on Sundays shall be permitted across the entire province, beginning October 4, 2009 and ending April 30, 2010 for the species and during the seasons as described in this Order.	
Repeal	8. The <i>Open Season Big Game Moose Hunting Order, Labrador, 2008-2009</i>, Newfoundland and Labrador Regulation 64/08, is repealed.	

Schedule

(a) Area 48 - Wabush

All that area encompassed by a line commencing at the intersection of the Quebec-Labrador border and 53° 20' north latitude;

Then moving due east to the west shore of Lac Boujonnier;

Then following this shoreline in a southerly direction to the outflow of a river flowing to Bruce Lake;

Then following this river to Bruce Lake;

Then following the shorelines of Bruce Lake, Pegrum Lake, Nault Lake, Steers Lake, and the unnamed rivers interconnecting these lakes;

Then to the north shore of Shabogamo Lake;

Then following Shabogamo Lake to its intersection with 53° 18.5' north latitude;

Then due east to the Quebec North Shore and the Labrador Railway at Shabo;

Then following the railway in a generally southerly direction to Ross Bay Junction;

Then in a generally westerly direction to the east shore of Lac Emerillion;

Then following the shoreline of Lac Emerillion in a generally southerly direction to 66° 22' west longitude;

Then due south to the Labrador-Quebec border;

Then following the border in generally west and north directions to the point of commencement.

(b) Area 49 - Lower Mecatina

All that area of Labrador bounded by a line commencing at the southeast corner of Area 59;

Then following $59^{\circ} 50'$ west longitude south to the Quebec-Labrador boundary, $52^{\circ} 00'$ north latitude;

Then following the Quebec-Labrador boundary due west to $61^{\circ} 30'$ west longitude;

Then following $61^{\circ} 30'$ west longitude due north to the southwest corner of Area 59;

Then following the south boundary of Area 59 to the point of commencement.

(c) Area 50 - Natashquan

All that area of Labrador bounded by a line commencing at the southeast corner of Area 60;

Then following the south boundary of Area 60 due west the east bank of the Romaine River;

Then following the east bank of the Romaine River, Quebec-Labrador boundary, in a southeasterly direction to the Labrador-Quebec boundary at $52^{\circ} 00'$ north latitude;

Then following $52^{\circ} 00'$ north latitude due east to the southeast corner of Area 49;

Then following the west border of Area 49 at $61^{\circ} 30'$ west longitude due north to the point of commencement.

(d) Area 51 - Grand Falls

All that area of Labrador bounded by a line commencing at the edge of the west bank of the Metchin River where the river intersects the Churchill Road;

Then following the edge of the west bank of the river in a generally northerly direction to its intersection with an unnamed lake at 53° 33' north latitude, 63° 11' west longitude;

Then following a straight line in a generally westerly direction to the summit of Lookout Mountain;

Then following a straight line in a generally northwesterly direction to the summit of an unnamed hill at elevation, 556 metres, 53° 41' north latitude, 64° 29' west longitude;

Then following a straight line in a general southwesterly direction to the intersection of Route 500 and Esker Road;

Then following Route 500 to where the transmission lines cross Route 500, west of the Ossokmanuan bridge;

Then following a straight line in a general southerly direction to the summit of an unnamed hill, elevation 673 metres, 53° 23' north latitude, 65° 07' west longitude;

Then following a straight line in a southeasterly direction to the intersection of the west bank of the Atikonak River and the 735 transmission line;

Then following a straight line in a northeasterly direction to the summit of an unnamed hill of elevation 643 metres, 53° 14' north latitude, 64° 5' west longitude;

Then following a straight line in a northeasterly direction to the summit of an unnamed hill at elevation 456 metres, 53° 11' north latitude, 63° 14' west longitude;

Then following a straight line in a generally easterly direction to 53° 12" north, 63° 30" west longitude;

Then following a straight line in a northerly direction to the west bank at the mouth of the Metchin River;

Then following the edge of the west bank of the river north to the point of commencement.

(e) Area 52 - Grand River

All that area of Labrador bounded by a line commencing at the southeast corner of Area 51, 53° 10' north latitude, 63° 00' west longitude;

Then following 63° 00' west longitude due south to the intersection with 53° 00' north latitude;

Then following a straight line in an easterly-southeasterly direction to the edge of the west bank of the Minipi River at 52° 46' north latitude, 61° 30' west longitude;

Then following 61° 30' west longitude due north to the intersection with the edge of the north bank of the Churchill River;

Then following the north bank of the river to the west bank at the mouth of Penus River;

Then following the edge of the west bank of the Penus River to its intersection with 61° 30' west longitude;

Then following 61° 30' west longitude due north to the intersection with the edge of the south bank of the Goose River;

Then following a straight line in a westerly direction to the boundary of Area 51 at 53° 33' north latitude, 63° 11' west longitude;

Then following the boundary of Area 51 to its point on the west bank of the Metchin River at its outflow into Churchill River;

Then following a straight line in a southerly direction to 53° 12" north, 63° 30" west longitude;

Then following a straight line in an easterly direction to 53° 10" north, 63° 00" west longitude;

Then following a straight line in a southerly direction to the point of commencement.

(f) Area 53 - Muskrat Falls

All that area of Labrador bounded by a line commencing at the south bank of the Goose River at 61° 30' west longitude;

Then following a straight line in a north-easterly direction to the peak at Cape Law, 373 metres;

Then following a straight line in a south-easterly direction to the peak at Cape Caribou, 440 metres;

Then following a straight line in a south-easterly direction to its intersection with North West River Road located at 53° 31.55' north latitude and 60° 12.05' west longitude;

Then following North West River Road in a north-easterly direction to the North West River Bridge at the crossing between Little Lake and North West Bight;

Then following the southern and eastern shorelines of Northwest Bight to Sandy Point;

Then following a straight line in a south-westerly direction to the northern extremity of the Churchill (Grand) river outlet into Goose Bay;

Then following the north shore of the Churchill River in a south-westerly direction to its confluence with the Penus River;

Then following the northern bank of the Penus River in a westerly direction to its intersection with 61° 30' west longitude;

Then following 61° 30' west longitude due north to the point of commencement.

(g) Area 53A - Muskrat Falls

All that area of Labrador bounded by a line commencing at the north bank of the Churchill River and 61° 30' west longitude;

Then following the north bank of the Churchill (Grand) River in a generally north easterly direction to the northern extremity of Churchill River outlet into Lake Melville;

Then following a straight line in a north easterly direction to Sandy Point; then following the western shoreline of Lake Melville in a northerly direction to North West Point;

Then following a straight line in a generally easterly direction to McLean Point;

Then following the south western shoreline of Carter Basin in a generally south easterly direction to the mouth of the Kenemich River;

Then following the west bank of the Kenemich River in a southerly direction to a point located at 53° 14' north latitude and 59° 50' west longitude;

Then following a straight line in a southerly direction to 53° 10' north latitude, 59° 50' west longitude;

Then following a straight line in a south-westerly direction to the confluence of the Kenamu River and a river known locally as South Branch River;

Then following a straight line in a south-westerly direction to a point located at 52° 46' north latitude and 61° 30' west longitude;

Then following a straight line due north to the point of commencement.

(h) Area 54 - Grand Lake

All that area of Labrador commencing at the northwest corner of Area 53 and following 61° 30' west longitude due north to the edge of the north bank of the Wapustan River;

Then following a straight line to the confluence of Nipishish Lake and Crooked River;

Then following a straight line to the position 53° 45' north latitude, 60° 15' west longitude;

Then following a straight line to the summit of Sunday Hill in the town of North West River;

Then following a straight line to the south abutment of North West River;

Then following the North West River Road to the confluence of 53° 31.55 north latitude and 60° 12.5' west longitude;

Then following the boundary of Area 53 to the point of commencement.

(i) Area 55 - Double Mer

All that area of Labrador bounded by a line commencing at the south abutment of the North West River Bridge and following the shore line of Hamilton Inlet in a generally northeasterly direction to the confluence of Groswater Bay and the edge of the east bank of Tom Luscombe Brook;

Then following a straight line to the northeast corner of Area 54 where Nipishish Lake flows into Crooked Brook;

Then following the east boundary of Area 54 generally in a southeasterly direction to the point of commencement, excluding all offshore islands.

(j) Area 56 - Kaipokok

All that area of Labrador bounded by a line commencing at the northeast corner of Area 54 where Nipishish Lake flows into the Crooked River;

Then following a straight line in a northwesterly direction to a point on the Kaipokok Lake at 54° 30' north latitude, 61° 00' west longitude;

Then proceeding in a straight line in a northeasterly direction to a point on the south bank of the Kanoiriktok River at 54° 49' 5" north latitude, 60° 30' west longitude;

Then proceeding in a straight line in an easterly direction to the 450 metre summit of Post Hill at 54° 53' 30" north latitude, 59° 45' west longitude;

Then following 59° 45' west longitude due south to the intersection with the north boundary of Area 55;

Then following the north boundary of Area 55, in a southwesterly direction, to the point of commencement.

(k) Area 57 - Paradise River

All that area of Labrador bounded by a line commencing at a point 52° 45' north latitude, 58° 00' west longitude;

Then following 58° 00' west longitude due north to the intersection with 54° 00' north latitude;

Then following 54° 00' north latitude due east to the intersection with the Labrador Coast;

Then following the Labrador Coast in a generally southerly direction, including all the offshore islands, to the North Shore of Caplin Bay;

Then following the North Shore of Caplin Bay in a generally westerly direction to the intersection with 55° 55' west longitude at 53° 07' 20" north latitude;

Then following 53° 07' 20" north latitude in a westerly direction to the intersection with 57° 00' west longitude;

Then following a straight line in a southwesterly direction to the point of commencement.

(l) Area 58 - Alexis River

All that area of Labrador bounded by a line commencing at the southwest corner of Area 57 (as described in paragraph (k));

Then following $58^{\circ} 00'$ west longitude due south to the Labrador-Quebec border at $52^{\circ} 00'$ north latitude;

Then following the $52^{\circ} 00'$ north latitude due east to the Labrador coast;

Then following the Labrador coastline in a generally northerly direction, including all the offshore islands, to the north shore of Caplin Bay;

Then following the south boundary of Area 57 to the point of commencement.

(m) Area 59 - Upper Kenamu

All that area of Labrador bounded by a line commencing at the southeast corner of Area 53A, $53^{\circ} 10'$ north latitude, $59^{\circ} 50'$ west longitude;

Then following $59^{\circ} 50'$ west longitude due south to $52^{\circ} 30'$ north latitude;

Then following $52^{\circ} 30'$ north latitude due west to $61^{\circ} 30'$ west longitude;

Then following $61^{\circ} 30'$ west longitude due north to the southwest corner of Area 53A;

Then following the south boundary of Area 53A to point of commencement.

(n) Area 60 - Upper Mecatina

All that area of Labrador bounded by a line commencing at the southeast corner of Area 52;

Then following the south boundaries of Areas 52 and 51 in a generally westerly direction to a point on the south boundary of Area 51 at the summit of an unnamed hill of elevation 9,643 metres, 53° 14' north latitude, 64° 05' west longitude;

Then following a straight line in a southeasterly direction to the east bank of the source of the Romaine River at 52° 52' 5" north latitude, 63° 36' 5" west longitude;

Then following the east bank of the Romaine River, Quebec-Labrador boundary, in a southerly direction to the intersection with 52° 30' north latitude;

Then following 52° 30' north latitude east to longitude 61° 30' west;

Then following 61° 30' west longitude due north to the point of commencement.

(o) Area 85 - Snegamook

All that area bounded by a line commencing at the outflow of Nipishish Lake at the Crooked River;

Then following in a north-northwesterly direction to the point at 54° 30' North, 61° 00' west;

Then in a northerly direction to 54° 41' north, 61° 00' west;

Then in a westerly direction to the unnamed river flowing into Mistinippi Lake at approximately 54° 41' north, 61° 18' west;

Then in a generally westerly direction on the south bank of the river to the western extremity of the unnamed lake at approximately 54° 44' north, 61° 46' west;

Then in a straight line in a north-northwesterly direction to the southern extremity of the unnamed lake at 54° 47' north, 61° 48' west;

Then in a generally northerly direction along the western shore of the above mentioned lake;

Then in a generally northerly, westerly then southerly directions along the unnamed river to approximately 54° 46' north, 62° 00' west;

Then in a westerly direction to 54° 46' north, 62° 30' west;

Then in a southerly direction to the Naskaupi River at approximately 54 ° 15' north, 62° 30' west;

Then in a generally easterly then southerly directions along the north bank of the Naskaupi River and Wuchusk Lake, and east bank of Naskaupi Lake to the confluence of the Wapustan and Naskaupi Rivers;

Then following a straight line in a general easterly direction to the point of commencement.

©Earl G. Tucker, Queen's Printer



NEWFOUNDLAND AND LABRADOR REGULATION 96/09

*Open Season Fall Big Game Black Bear Hunting and
Snaring Order, Newfoundland, 2009*

under the
Wild Life Regulations
and the
Wild Life Act

(Filed November 18, 2009)

Under the authority of sections 38 and 114 of the *Wild Life Regulations* and the *Wild Life Act*, I make the following Order.

Dated at St. John's, November 10, 2009.

Charlene Johnson
Minister of Environment and Conservation

ORDER

Analysis

- | | |
|-----------------------|------------------------|
| 1. Short title | 6. Validity of licence |
| 2. Fall open season | 7. Prohibition |
| 3. Devices permitted | 8. Sunday hunting |
| 4. Prohibited devices | 9. Repeal |
| 5. Bag limits | |

Short title

1. This Order may be cited as the *Open Season Fall Big Game Black Bear Hunting and Snaring Order, Newfoundland, 2009*.

Fall open season

2. (1) The fall open season for the hunting and snaring of black bear shall be September 12, 2009 to November 8, 2009 in all moose management areas, except as follows:

Area No.	Season Dates
31	No open season
32	No open season
33	No open season
34	No open season
35	No open season
36	No open season
38	No open season
43	No open season
44	No open season

(2) The moose management areas referred to in subsection (1) are described in the *Open Season Big Game Moose Hunting Order, Newfoundland, 2009-2010* except that

- (a) Moose Management Area 28 is further described, for black bear hunting only, to exclude

All that area of the Island of Newfoundland located in the district of Terra Nova, commencing at a point in the centre of the land-fill site at the northwestern edge of Terra Nova National Park;

Then extending to a radius of 2 kilometres from that point in all directions, with an area of approximately 1,250 hectares and a perimeter of approximately 12,543 metres; and

- (b) moose management sub-areas do not apply to black bear hunting.

(3) Hunting Black Bear by bow and arrow only shall be permitted in Moose Management Areas 1, 2, 3, 4, 5, 6, 7, 8, 9, 10, 11, 12, 13, 14, 15, 16, 17, 18, 19, 20, 21, 22, 23, 24, 25, 26, 27, 28, 29, 30, 37, 39, 40, 41, 42, 45, and 47 during the period of August 29, 2009 to September 12, 2009.

Devices permitted	3. Only Aldrich foot snares or similar devices may be set for the taking of black bears and those devices shall be set in a covered "cubby set" and clearly marked with a warning sign indicating that a bear snaring device is set in the "cubby".
Prohibited devices	4. Steel-jaw leghold, spring or jump traps or neck snares shall not be used to take black bears.
Bag limits	5. (1) The bag limit shall be two black bear of any age or sex. (2) Notwithstanding subsection (1), female black bears accompanied by cubs, may not be taken by shooting.
Validity of licence	6. Each fall season a black bear licence shall be valid only for the area for which it is issued.
Prohibition	7. A person shall not transport or possess firearms under the authority of a valid game licence without being in possession of an outdoor identification card, or non-resident equivalent card, issued to the person.
Sunday hunting	8. Hunting with a firearm on Sundays shall be permitted across the entire province, beginning October 4, 2009 and ending April 30, 2010, for the species and during the seasons as described in this Order.
Repeal	9. <i>The Open Season Fall Big Game Black Bear Hunting and Snaring Order, Newfoundland, 2008-2009, Newfoundland and Labrador Regulation 59/08, is repealed.</i>

©Earl G. Tucker, Queen's Printer



NEWFOUNDLAND AND LABRADOR REGULATION 97/09

*Open Season Big Game Black Bear Hunting and Snaring
Order, Labrador, 2009-2010*

under the
Wild Life Regulations
and the
Wild Life Act

(Filed November 18, 2009)

Under the authority of sections 38, 92 and 114 of the *Wild Life Regulations* and the *Wild Life Act*, I make the following Order.

Dated at St. John's, November 10, 2009.

Charlene Johnson
Minister of Environment and Conservation

ORDER

Analysis

- | | |
|-----------------------|-------------------|
| 1. Short title | 7. Bag limits |
| 2. Prohibition | 8. Prohibition |
| 3. Open seasons | 9. Sunday hunting |
| 4. Devices permitted | 10. Repeal |
| 5. Prohibited devices | |
| 6. Special licence | Schedule |

Short title

1. This Order may be cited as the *Open Season Big Game Black Bear Hunting and Snaring Order, Labrador, 2009-2010*.

Prohibition	<p>2. The taking of black bear is prohibited throughout Labrador except as provided for in this Order.</p>
Open seasons	<p>3. (1) The open seasons for black bear hunting shall be</p> <p>(a) in the George River Zone, August, 10, 2009-November 30, 2009 and April 1, 2010 to July 13, 2010; and</p> <p>(b) in the Labrador South Zone, September 1, 2009-November 30, 2009 and April 1, 2010-July 13, 2010.</p> <p>(2) The zones referred to in subsection (1) are described in the Schedule.</p>
Devices permitted	<p>4. Only Aldrich foot snares or similar devices may be set for the taking of black bears and those devices shall be set in a covered "cubby set" and clearly marked with a warning sign indicating that a bear snaring device is set in the "cubby".</p>
Prohibited devices	<p>5. Steel-jaw leghold, spring or jump traps or neck snares shall not be used to take black bears.</p>
Special licence	<p>6. Persons who have resided in the Torngat Mountain Electoral District for a period of 6 consecutive months immediately before applying for a licence may be issued a licence identified as a special licence free of charge.</p>
Bag limits	<p>7. (1) The bag limit for residents shall be 2 black bears of any age or sex.</p> <p>(2) The bag limit for non-residents shall be 2 black bears of any age or sex.</p> <p>(3) Notwithstanding subsections (1) and (2), female black bears accompanied by cubs may not be taken by shooting.</p>
Prohibition	<p>8. A person shall not transport or possess any firearms under the authority of a valid game licence without being in possession of an outdoor identification card, or non-resident equivalent card, issued to the person.</p>

*Open Season Big Game Black Bear Hunting and
Snaring Order, Labrador, 2009-2010*

97/09

Sunday hunting

9. Hunting with a firearm on Sundays shall be permitted across the entire province, beginning October 4, 2009 and ending April 30, 2010 for the species and during the seasons as described in this Order.

Repeal

10. The *Open Season Big Game Black Bear Hunting and Snaring Order, Labrador, 2008-2009*, Newfoundland and Labrador Regulation 60/08, is repealed.

Schedule

(a) George River Zone

All that area of Labrador bounded by a line beginning at the point where the 54° 00' 00.0" North latitude intersects the Labrador-Quebec Boundary;

Then following the Labrador-Quebec Boundary in a northerly and easterly direction to a point where this boundary intersects 58° 26' 37.8" North latitude;

Then following a straight line in a south-easterly direction for 11941 meters to a point located at 58° 22' 14.2" North latitude and 63° 42' 2.3" West longitude;

Then following a straight line in a north-easterly direction for 15097 meters to a point located at 58° 25' 31.5" North latitude and 63° 27' 51.9" West longitude;

Then following a straight line for 8960 meters in a north-easterly direction to a point where this boundary intersects 58° 28' 12.5" North latitude and coast line of mainland Labrador;

Then following this coastline in a generally southerly direction, including all offshore islands, to the mouth of the Kanairiktok River;

Then following the north bank of the Kanairiktok River in a westerly direction to Snegamook Lake;

Then following the north shoreline of Snegamook Lake in a westerly direction to the Kanairiktok River;

Then following the north bank of the Kanairiktok River in a westerly direction to its confluence with the Sail Lake River (tributary);

Then following the Sail Lake River (tributary) in a southerly direction to a point where the Smallwood Reservoir inter-

sects the Sail Lake Dikes (water control structures) located at 54° 25' 26.6" North latitude and 63° 14' 30.9" west longitude;

Then following a straight line in a southwesterly direction to the north bank of the McPhayden River at its confluence with Menihek Lake;

Then following the north bank of McPhayden River to its intersection with 54° 00' 00.0" North latitude;

Then following the 54° 00' 00.0" North latitude in a westerly direction to the point of commencement.

(b) Labrador South Zone

All that area of Labrador not included in the George River Zone described above.

©Earl G. Tucker, Queen's Printer



NEWFOUNDLAND AND LABRADOR REGULATION 98/09

*Open Season Big Game Caribou Hunting Order,
Newfoundland, 2009-2010*
under the
Wild Life Regulations
and the
Wild Life Act

(Filed November 18, 2009)

Under the authority of sections 38 and 114 of the *Wild Life Regulations* and the *Wild Life Act*, I make the following Order.

Dated at St. John's, November 10, 2009.

Charlene Johnson
Minister of Environment and Conservation

ORDER

Analysis

- | | |
|-----------------------------|-------------------|
| 1. Short title | 6. Prohibition |
| 2. Hunting prohibited | 7. Sunday hunting |
| 3. Caribou management areas | 8. Repeal |
| 4. Open seasons | |
| 5. Bag limit | Schedule |

Short title

1. This Order may be cited as the *Open Season Big Game Caribou Hunting Order, Newfoundland, 2009-2010*.

*Open Season Big Game Caribou Hunting Order,
Newfoundland, 2009-2010*

98/09

Hunting prohibited
Caribou manage-
ment areas

2. The hunting of caribou is prohibited throughout the Island of Newfoundland, except as provided for in this Order.

3. The caribou management areas are as described in the Schedule.

Open seasons

4. (1) The open seasons for the hunting of caribou in the areas described in the Schedule shall be:

Area No.	Season Dates
61	September 12, 2009-December 13, 2009
62	September 12, 2009-December 13, 2009
63	Closed
64	September 12, 2009-December 13, 2009
65	Closed
66 to 69	September 12, 2009-December 13, 2009
70	September 12, 2009-September 26, 2009
71	September 5, 2009-November 8, 2009
72	September 12, 2009-October 10, 2009
73	Closed
74	Closed
75	Closed
76-79	September 12, 2009-December 13, 2009

(2) In addition to subsection (1), hunting by bow and arrow only shall be permitted in Areas 61, 62, 64, 66, 67, 68, 69, 76, 77, 78 and 79 for the period August 29, 2009 to September 12, 2009.

Bag limit

5. The bag limit is one caribou as specified in each licence, except a 2 caribou bag limit for resident licences in Area 71, Grey Islands.

Prohibition

6. A person shall not transport or possess any firearm under the authority of a valid game licence without being in possession of an outdoor identification card, or equivalent non-resident card issued to the person.

Sunday hunting

7. Hunting with a firearm on Sundays shall be permitted across the entire province, beginning October 4, 2009 and ending April 30, 2010, for the species and during the seasons as described in this Order.

Repeal

8. The *Open Season Big Game Caribou Hunting Order, Newfoundland, 2008-2009*, Newfoundland and Labrador Regulation 61/08, is repealed.

Schedule

(a) Area 61 - LaPoile

All that area of the Island of Newfoundland commencing at the southeastern branch of the Southwest Brook;

Then following a straight line in a southeasterly direction to the northern extremity of Cormacks Lake;

Then following a straight line in a southerly direction to King George IV Lake at the start of Lloyd's River;

Then following Lloyd's River to Lloyd's Lake;

Then following a straight line in a southeasterly direction to where an Unnamed River enters the southwestern extremity of Victoria Lake Reservoir;

Then following this Unnamed River in a generally westerly direction to the northeastern extremity of Peter Stride's Pond;

Then following the northern shore of said pond to its intersection with the Burgeo Highway;

Then following the Burgeo Highway in a generally southerly direction to its intersection with an Unnamed River which flows into the southwestern extremity of Spruce Pond in a generally easterly direction;

Then following the northern shoreline of Spruce Pond to an Unnamed Pond at its eastern extremity at UTM co-ordinates 462,745 metres East and 5,328,644 metres north;

Then following a straight line in a southeasterly direction to an Unnamed River entering an Unnamed Pond at UTM co-ordinates 466,985 metres east and 5,311,647 metres north;

Then following the north bank of the Unnamed River in a generally easterly direction to its confluence with White

Bear River at UTM coordinates 476,835 metres east and 5,308,922 metres north;

Then following the western bank of White Bear River in a generally southerly direction to the mouth of said river in White Bear Bay;

Then following the coastline in a generally westerly direction to Channel- Port aux Basques;

Then following the TCH in a northerly direction to where it crosses the Southwest Brook;

Then following Southwest Brook to the point of commencement but excluding all offshore islands.

(b) Area 62 - Buchans Plateau

All that area of the Island of Newfoundland bounded by a line beginning at the TCH Bridge crossing Southwest Brook;

Then following the TCH in a generally northeasterly direction to Camp 33 Road;

Then following Camp 33 Road to the southwestern extremity of Grand Lake;

Then following the southern and eastern shoreline of Grand Lake to the mouth of Hinds Brook;

Then following Hinds Brook to Hinds Lake;

Then following the southwestern shore of Hinds Lake to its southeastern extremity;

Then following a straight line to the southern extremity of Buchans Lake;

Then following a straight line to the western abutment of the Exploits Dam;

Then following the southern shoreline of Red Indian Lake to the a small cove on Red Indian Lake located at UTM co-ordinates 495,641 metres east and 5,379,525 metres north;

Then following a straight line in a southeasterly direction to the intersection of the forest access road with an Unnamed Brook at UTM coordinates 514,879 metres east and 5,347,269 metres north;

Then following the forest access road in a generally south-westerly then northerly direction to the southeastern extremity of Victoria Lake Reservoir;

Then following the southern shoreline of said reservoir to its southwestern extremity;

Then following a straight line in a northwesterly direction to the southwestern extremity of Lloyd's Lake;

Then following the north bank of Lloyd's River in a south-westerly direction to King George IV Lake;

Then following a straight line in a northeasterly direction to the northern extremity of Cormacks Lake;

Then following a straight line in a northwesterly direction to the southeastern branch of Southwest Brook;

Then following Southwest Brook in a westerly direction to the point of commencement.

(c) Area 63 - Grey River

All that area of the Island of Newfoundland bounded by a line beginning at the mouth of White Bear River in White Bear Bay;

Then following the western bank of White Bear River in a generally northerly direction to its confluence at an Unnamed River located at UTM coordinates 476,835 metres east and 5,308,922 metres north;

Then following the north bank of said Unnamed River in a west by northwesterly direction to an Unnamed Pond located at UTM coordinates 466,985 metres east and 5,311,647 metres north;

Then following a straight line in a northwesterly direction to an Unnamed Pond at UTM coordinates 462,745 metres east and 5,328,644 metres north;

Then following the eastern shoreline of said pond to its eastern extremity of Spruce Pond;

Then following the northern shoreline of Spruce Pond in a generally westerly direction to an Unnamed River at its southwestern extremity;

Then following said Unnamed River to its intersection with the Burgeo Highway;

Then following the Burgeo Highway in a generally northerly direction to its intersection with Peter Strides Pond;

Then following the northern shoreline of Peter Strides Pond to an Unnamed River located at its northeastern extremity;

Then following said Unnamed River in a generally easterly direction to the southwestern extremity of Victoria Lake Reservoir;

Then following the southern shoreline of the aforementioned Reservoir to the forest access road located at its southeastern extremity;

Then following the forest access road in a southerly then easterly direction to its intersection with an Unnamed Brook at UTM coordinates 514,879 metres east and 5,347,269 metres north;

Then following a straight line in a northwesterly direction to a small cove on Red Indian Lake located at UTM coordinates 495,641 metres east and 5,379,525 metres north;

Then following the southern shoreline of Red Indian Lake in a generally northeasterly direction to the western abutment of the Exploits Dam on the Exploits River;

Then following the south bank of the Exploits River to the mouth of Stony Brook;

Then following a straight line in a southwesterly direction for approximately 550 metres to the intersection of Crystal Lake access road with Lemotte's Lake access road at UTM coordinates 597,250 metres east and 5,419,250 metres north;

Then following Crystal Lake access road to its intersection with an Unnamed Brook;

Then following said brook to its mouth at the eastern arm of Crystal Lake;

Then following the southeastern shoreline of Crystal Lake to its southern extremity;

Then following a straight line in a southwesterly direction to the eastern extremity of Pistol Lake;

Then following a straight line in a southeasterly direction to the mouth of Northwest Brook in Bay d'Espoir;

Then following the coastline in a generally westerly direction to the point of commencement but excluding all offshore islands.

(d) Area 64 - Middle Ridge

All that area of the Island of Newfoundland beginning at the mouth of Southeast Brook in Bay D'Espoir;

Then following Southeast Brook to Route 361;

Then following Route 361 to the Bay D'Espoir Highway, Route 360;

Then following the Bay d'Espoir Highway in generally northerly direction to the Northwest Gander River;

Then following the south bank of Northwest Gander River and the southern shoreline of Gander Lake to the eastern extremity of Gander Lake;

Then following a straight line to the closest point of the TCH, Route 1;

Then following the TCH in a generally easterly direction to its intersection with the road leading to the abandoned Alexander Bay Railway Station;

Then following this road to the T'Railway;

Then following the T'Railway in a generally southerly direction to Goobies;

Then following the Goobies - Terrenceville Highway, Routes 11 and 15, in a generally southwesterly direction to Terrenceville;

Then following the coastline of Fortune Bay, Hermitage Bay, and Bay D'Espoir to the point of commencement but excluding all offshore islands.

(e) Area 65 - Avalon Peninsula

All that area of the Island of Newfoundland on the Avalon Peninsula bounded by a line beginning at the intersection of Witless Bay Line, Route 13, and the Trans Canada Highway, TCH;

Then following Witless Bay Line to the coastline of Witless Bay;

Then following the coastline in a generally southerly direction to Cape Race;

Then following the coastline of Trepassey Bay to the mouth of Northeast Brook;

Then following the western shoreline of the brook to the Southern Shore Highway, Route 10;

Then following the highway in a generally westerly direction to Peter's River;

Then following the eastern bank of Peter's River to its mouth in Holyrood Bay;

Then following the shoreline of Holyrood Bay and St. Mary's Bay to Salmonier Arm;

Then following the southern shoreline of Salmonier Arm to the closest point of Salmonier Line, Route 90, at St. Catherine's;

Then following Salmonier Line in a generally northerly direction to its intersection with the TCH;

Then following the TCH in a generally easterly direction to the point of commencement but excluding the Salmonier Nature Park and excluding all offshore islands.

(f) Area 66 - Gaff Topsails

All that area of the Island of Newfoundland bounded by a line beginning at the mouth of Hinds Brook in Grand Lake;

Then following the eastern shoreline of Grand Lake, Sandy Lake and Birchy Lake to the eastern extremity of Birchy Lake;

Then following a straight line to the closest point on the TCH;

Then following the TCH in a generally easterly and southerly direction to Badger;

Then following a straight line to the closest point on the south bank of the Exploits River;

Then following the Exploits River to Exploits Dam;

Then following a straight line in a northwesterly direction from the western abutment of Exploits Dam to the southern extremity of Buchans Lake;

Then following a straight line in a northwesterly direction to the southeastern extremity of Hinds Lake;

Then following the southern and western shoreline of Hinds Lake to its outlet in Hinds Brook;

Then following the south bank of Hinds Brook to the point of commencement.

(g) Area 67 - Pot Hill

All that area of the Island of Newfoundland beginning at the mouth of Southeast Brook in Bay D'Espoir;

Then following the coastline of Bay D'Espoir to the mouth of Northwest Brook, Bay D'Espoir;

Then following a straight line in a northwesterly direction to the eastern extremity of Pistol Lake;

Then following the northern shore of Pistol Lake to its outlet;

Then following the eastern shore of the outlet brook to its intersection with the bridge on Chrystal Lake access road;

Then following this road to its intersection with the Lemotte's Lake access road at the approximate UTM coordinates 597,250 metres east, 5,419,250 metres north;

Then following a straight line in a north-northeasterly direction for approximately 550 metres to the mouth of Stoney Brook in the Exploits River;

Then following the south bank of the Exploits River to the Sir Robert Bond Bridge, Trans Canada Highway, TCH, Route 1;

Then following the TCH to its intersection with the Bay D'Espoir Highway, Route 360;

Then following the highway to its intersection with Route 361;

Then following Route 361 to Southeast Brook;

Then following Southeast Brook to the point of commencement.

(h) Area 68 - Mount Peyton

All that area of the Island of Newfoundland bounded by a line beginning at the southeastern abutment of the bridge on the Bay D'Espoir Highway, Route 2, crossing the Northwest Gander River;

Then following the Bay D'Espoir Highway in a generally northerly direction to its intersection with the Trans Canada Highway, TCH, Route 1;

Then following the TCH in a generally easterly direction to the southwestern abutment of the Queen Elizabeth Bridge crossing the Gander River;

Then following the west bank of the Gander River and the western shoreline of Gander Lake to the mouth of the Northwest Gander River;

Then following the north bank of the Northwest Gander River to the point of commencement.

(i) Management Area 69 - Northern Peninsula

All that area of the Island of Newfoundland commencing at the mouth of Cloud River where it flows into Salt Water Pond;

Then following the southern shoreline of Salt Water Pond, the western coastline of Chimney Bay, the western coastline of Canada Bay, and the western coastline of White Bay to Sops Arm;

Then following the northern bank of Main River in a generally westerly direction to UTM co-ordinates 487,921 metres east and 5,516,970 metres north;

Then following a straight line to the opposite bank of Main River;

Then following a straight line in a southwesterly direction to the boundary of Gros Morne National Park at UTM co-ordinates 466,862 metres east and 5,500,135 metres north;

Then following the boundary of Gros Morne National Park in a generally northerly direction to a point where the park boundary crosses the Northern Peninsula Highway at UTM co-ordinates 446,900 metres east and 5,535,096 metres north;

Then following the Northern Peninsula Highway in a generally northerly direction to the bridge that crosses Big East River;

Then following the southbank of Big East River to its outlet from an unnamed pond;

Then following the southern shore of the unnamed pond to its eastern most extremity;

Then following a straight line in a southeast direction to the western most extremity of an unnamed pond;

Then following the southern shore of the second unnamed pond to its eastern most extremity;

Then following a straight line in an easterly direction to the headwaters of Cloud River;

Then following the south bank of Cloud River to the point of commencement but excluding all offshore islands.

(j) Area 70 - Merasheen Island

Merasheen Island, Placentia Bay, including adjacent Long, King, and Rose au Rue Islands.

(k) Area 71 - Grey Islands, White Bay

(l) Area 72 - Fogo Island, Hamilton Sound

(m) Area 73 - Burin Peninsula Knee

All that area of the Island of Newfoundland bounded by a line beginning where Piper's Hole River crosses the Terrenceville Highway;

Then following the coastline in a generally southwesterly direction to Mortier Bay;

Then following the highway crossing this bay to Marystown;

Then following Route 210 and 213 in a northwesterly direction to Garnish;

Then following the coastline in a generally northerly direction to Terrenceville;

Then following the Routes 211 and 210 to the point of commencement.

(n) Area 74 - Burin Peninsula Foot

All that area of the Island of Newfoundland bounded by a line beginning at Garnish;

Then following Route 213 in a southeasterly direction to 210;

Then following Route 210 in an easterly direction to where this road crosses Mortier Bay;

Then following the east coastline of Placenta Bay, Lawn Bay, Fortune Bay to the point of commencement.

(o) Area 75 - Blow Me Down Mountains

All that area of the Island of Newfoundland bounded by a line beginning at the western end of Serpentine Lake;

Then following the Serpentine River in a westerly direction to the coast;

Then following the coastline of the Gulf of St. Lawrence in a generally northerly direction to South Head, Bay of Islands;

Then following the coastline of Bay of Islands in a southerly and easterly direction to Frenchmans Head;

Then following the southern shoreline of Humber Arm to Cook's Brook;

Then following Cook's Brook to a point where this brook crosses a road leading to Serpentine Lake;

Then following this road to the eastern end of Serpentine Lake;

Then following the northern shoreline of Serpentine to the point of commencement.

(p) Area 76 - St. Anthony

All that area of the Island of Newfoundland bounded by a line beginning at the western extremity of Crouse Harbour on the Conche Peninsula;

Then following a straight line to the nearest point on Route 434;

Then following Route 434 in westerly direction to its intersection with Route 433;

Then following Route 433 in a northwesterly direction to its intersection with Route 432;

Then following Route 432 in a westerly direction to its intersection with Route 430;

Then following Route 430 in a northerly direction to the point where it intersects a small stream flowing from Grand Pond;

Then following said stream to its outflow into the Strait of Belle;

Then following the eastern coastline of the Strait of Belle Isle in a generally northeasterly direction to Cape Norman;

Then following the coastline of Pistolet Bay to the eastern extremity of Milnar Arm;

Then following a straight line to the closest point on Route 437;

Then following Route 437 to its intersection with Route 436;

Then following Route 436 to its intersection with Route 430;

Then following Route 430 in a generally southeasterly direction to its end at Loup Marin Point;

Then following a straight line to the coastline in Hare Bay;

Then following the coastline of Hare Bay in a generally southerly direction to the point of commencement but excluding all offshore islands.

(q) Area 77 - Cape Shore

All that area of the Island of Newfoundland bounded by the line beginning at the intersection of Routes 100 and 91 at Point Verde;

Then following the Argentia Highway, Route 91, in a generally easterly direction to the intersection of Route 92;

Then following Route 92 in a generally southerly direction to Branch;

Then continuing to follow Route 92 to Route 100;

Then following Route 100 in a generally westerly direction to St. Brides;

Then continuing to follow Route 100 in a generally northerly direction to the point of commencement at Point Verde but excluding all offshore islands.

(r) Area 78 - Hampden Downs

All that area of the Island of Newfoundland bounded by a line beginning at the intersection of Route 410 with Route 411 at Flatwater Pond;

Then following Route 410 in a generally southerly direction to its intersection with the Trans Canada Highway, Route 1, TCH, then following the TCH in a southwesterly direction to its intersection with an unnamed road located northeast of Birchy Lake;

Then following the unnamed road in a westerly direction to its intersection with Route 420;

Then following Route 420 to its intersection with Route 421;

Then following Route 421 to its end at the Beaches;

Then following a straight line in a westerly direction to the high water mark on the east shoreline of White Bay;

Then following the high water mark in a northeasterly direction to its intersection with Route 411 at Purbeck's Brook Bridge;

Then following Route 411 to the point of commencement but excluding all offshore islands.

(s) Area 79 - Adies Lake

All that area of the Island of Newfoundland bounded by a line beginning at the southern extremity of White Bay;

Then following a straight line to the nearest point on Route 421, Hampden Highway;

Then following Route 421 in a southerly direction to its intersection with Route 420;

Then following Route 420 in a southerly direction to its intersection with the Trans Canada Highway, TCH;

Then following the TCH in a southwesterly direction to its intersection with Route 430 near Deer Lake;

Then following Route 430 in a northwesterly direction to its intersection with the boundary of Gros Morne National Park near Wiltondale;

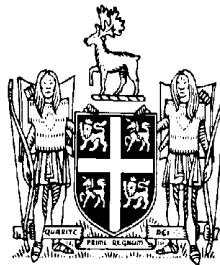
Then following the eastern boundary of Gros Morne National Park in a generally northerly direction to UTM co-ordinates 466,862 metres east and 5,500,135 metres north;

Then following a straight line in a northeasterly direction to a point on Main River located at UTM co-ordinates 487,921 metres east and 5,516,970 metres north;

Then following the south bank of said river in a generally easterly direction to its outflow in Sops Arm, White Bay;

Then following the western coastline of White Bay in first an easterly and then a southerly direction to the point of commencement but excluding all offshore islands.

©Earl G. Tucker, Queen's Printer



**NEWFOUNDLAND AND LABRADOR
REGULATION 99/09**

*Open Season Big Game Caribou Hunting Order,
Labrador, 2009-2010
under the
Wild Life Regulations
and the
Wild Life Act*

(Filed November 18, 2009)

Under the authority of sections 38, 92 and 114 of the *Wild Life Regulations* and the *Wild Life Act*, I make the following Order.

Dated at St. John's, November 10, 2009.

Charlene Johnson
Minister of Environment and Conservation

ORDER

Analysis

- | | |
|--------------------------|--------------------|
| 1. Short title | 4. Open season |
| 2. Hunting prohibited | 5. Closed season |
| 3. Caribou hunting zones | 6. Special licence |

*Open Season Big Game Caribou Hunting Order,
Labrador, 2009-2010*

99/09

- | | |
|--|-------------------------------|
| 7. Regular licence | 13. Jawbones of animals taken |
| 8. Non-resident licence | 14. Disposal of remains |
| 9. Requirements for obtaining licence | 15. Card to be returned |
| 10. Ammunition permitted | 16. Prohibition |
| 11. Permits for Sheshashiu Indian Band | 17. Sunday hunting |
| 12. Bag limits | 18. Repeal |
- Schedule

Short title **1.** This Order may be cited as the *Open Season Big Game Caribou Hunting Order, Labrador, 2009-2010*.

Hunting prohibited **2.** The hunting of caribou is prohibited throughout Labrador except as provided for in this Order.

Caribou hunting zones **3.** The caribou hunting zones are as described in the Schedule.

Open season **4.** (1) There shall be an open season in the following zones during the dates specified:

George River Zone	August 10, 2009 - April 30, 2010
Big River Zone	August 10, 2009 - April 30, 2010
Bay of Islands Zone	August 10, 2009 - April 30, 2010
Orma North Zone	October 1, 2009 - April 30, 2010
Michikamau East Zone	October 1, 2009 - April 30, 2010
Michikamau West Zone	October 1, 2009 - April 30, 2010
Twin Falls Zone	October 1, 2009 - April 30, 2010
Colville Lake Zone	October 1, 2009 - April 30, 2010
Sawbill Lake Zone	October 1, 2009 - April 30, 2010
Milner Lake Zone	October 1, 2009 - April 30, 2010
McPhayden River Zone	October 1, 2009 - April 30, 2010
Lac Virot Zone	October 1, 2009 – April 30, 2010

(2) Notwithstanding subsection (1), persons holding the special licence may take male caribou at any time.

(3) Open seasons may be declared for the various caribou hunting zones not having an open season if the George River caribou move into those zones.

Closed season

5. There shall be a closed season in the following zones

- (a) Double Mer Barrens Zone;
- (b) Grand Lake Zone;
- (c) Nipishish Lake Zone;
- (d) Mulligan River Zone;
- (e) Orma South Zone; and
- (f) Seal Lake Zone.

Special licence

6. (1) A resident who has resided permanently in the Torngat Mountains Electoral District for a period of not less than 6 consecutive months immediately prior to applying for a licence may be issued a caribou hunting licence free of charge.

(2) A licence issued under subsection (1) shall be known as a special licence.

(3) The holder of a special licence may designate another resident of Labrador to use that licence provided that the person so designated

- (a) holds or is entitled to hold a special licence; and
- (b) is in possession of the licence while hunting.

(4) Special licences shall be valid only within the George River Zone or any portion of a zone which is open and lies within the Torngat Mountains Electoral District.

Regular licence

7. (1) A resident who does not meet the residency requirements for a special licence under subsection 6(1) may be issued a caribou hunting licence.

(2) A licence issued under subsection (1) shall be known as a regular licence.

(3) The fee for a regular licence shall be \$27.

(4) A resident may be issued only one regular licence in a hunting season.

(5) The holder of a regular licence who has resided in Labrador for a period of 6 consecutive months immediately prior to applying for a licence, may designate another resident of Labrador to use that licence provided that the person so designated

(a) holds or is entitled to hold either a special licence or a regular licence;

(b) is in possession of the licence and a completed transfer form, signed by the license holder and the designated hunter; and

(c) assumes all responsibilities and obligations that are associated with the transferred licence.

Non-resident
licence

8. (1) A person who is not a resident may be issued a caribou hunting licence.

(2) A licence issued under subsection (1) shall be known as a non-resident licence.

(3) The fee for a non-resident licence shall be \$120.

Requirements for
obtaining licence

9. (1) To obtain a regular or special caribou hunting licence, the purchaser shall

(a) produce 2 pieces of identification, one of which must contain his or her signature; and

(b) sign the licence in the vendor's presence.

(2) To obtain a regular caribou hunting licence on behalf of another person, the person acquiring the licence shall

(a) present 2 pieces of identification, one of which must contain his or her signature;

(b) present a licence transfer form signed by the individual in whose name the licence is being issued; and

(c) sign the transfer form in the vendor's presence.

(3) The licence number of a licence obtained under subsection (2) shall be recorded on the transfer form by the vendor.

(4) The vendor of a licence obtained under subsection (2) shall sign the transfer form.

Ammunition permitted

10. Caribou may be hunted using .22 calibre centre-fire rifles which have a muzzle energy of 1,500 foot pounds or more.

Permits for Sheshashiu Indian Band

11. The minister may issue to members of the Indian Band, Sheshashiu, permits authorizing the taking of caribou in any zone, subject to conditions and limits set in the permits.

Bag limits

12. The bag limit shall be

(a) for holders of the special licence, no limit;

(b) for holders of the regular licence, 2 caribou of either sex; and

(c) for holders of the non-resident licence, 2 caribou of either sex.

Jawbones of animals taken

13. All persons taking caribou are required to surrender the lower jawbones of all animals taken to a representative of the Wildlife Division no later than May 7, 2010.

Disposal of remains

14. All persons taking caribou shall dispose of the remains at least 50 meters from the centerline of the Trans-Labrador Highway and in a manner that keeps the remains out of the visibility of persons travelling in vehicles on that highway.

Card to be returned

15. Each licence holder is required to complete and return to the Wildlife Division the self-addressed caribou harvest inventory card attached to the licence providing the results of his or her hunting effort within 2 weeks of successfully filling the licence or no later than May 7, 2010 for unsuccessful licence holders.

*Open Season Big Game Caribou Hunting Order,
Labrador, 2009-2010*

99/09

Prohibition

16. A person shall not transport or possess any firearms under the authority of a valid game licence without being in possession of an outdoor identification card, or non-resident equivalent card, issued to the person.

Sunday hunting

17. Hunting with a firearm on Sundays shall be permitted across the entire province, beginning October 4, 2009 and ending April 30, 2010, for the species and during the seasons as described in this Order.

Repeal

18. The *Open Season Big Game Caribou Hunting Order, Labrador, 2008-2009*, Newfoundland and Labrador Regulation 62/08, is repealed.

Schedule

(a) George River Zone

All that area of Labrador bounded by a line beginning at the point where the 54° 00' 00.0" north latitude intersects the Labrador-Quebec Boundary;

Then following the Labrador-Quebec Boundary in a northerly and easterly direction to a point where this boundary intersects 58° 26' 37.8" north latitude;

Then following a straight line in a south-easterly direction for 11941 meters to a point located at 58° 22' 14.2" north latitude and 63° 42' 2.3" west longitude;

Then following a straight line in a north-easterly direction for 15097 meters to a point located at 58° 25' 31.5" north latitude and 63° 27' 51.9" west longitude;

Then following a straight line for 8960 meters in a north-easterly direction to a point where this boundary intersects 58° 28' 12.5" north latitude and coast line of mainland Labrador;

Then following this coastline in a generally southerly direction, including all offshore islands, to the mouth of the Kanairiktok River;

Then following the north bank of the Kanairiktok River in a westerly direction to Snegamook Lake;

Then following the north shoreline of Snegamook Lake in a westerly direction to the Kanairiktok River;

Then following the north bank of the Kanairiktok River in a westerly direction to its confluence with the Sail Lake River (tributary);

Then following the Sail Lake River (tributary) in a southerly direction to a point where the Smallwood Reservoir intersects the Sail Lake Dikes (water control structures) located

at 54° 25' 26.6" north latitude and 63° 14' 30.9" west longitude;

Then following a straight line in a southwesterly direction to the north bank of the McPhayden River at its confluence with Menihek Lake;

Then following the north bank of McPhayden River to its intersection with 54° 00' 00.0" north latitude;

Then following the 54° 00' 00.0" north latitude in a westerly direction to the point of commencement.

(b) Michikamau East Zone

All that portion of Labrador commencing at the intersection of 64° 00' 00.0" west longitude and the north bank of the Churchill River which corresponds to 53° 31' 8.3" north latitude;

Then following the north bank of the Churchill River in a westerly direction to its intersection with Bowdoin Canyon;

Then following Bowdoin Canyon in a northerly direction to its intersection with the Esker-Churchill Falls-Goose Bay Access Road;

Then following the Esker-Churchill Falls-Goose Bay Access Road in a westerly direction to the Gabbro Water Control Structure located at 53° 45' 40" north latitude and 65° 21' 50.7" west longitude;

Then following 65° 21' 50.7" west longitude due north to the intersection with 54° 13' 19.1" north latitude;

Then following a straight line in a northeasterly direction to a point located at 54° 21' 22.9" and 64° 00' 00.0" west longitude;

Then following 64° 00' 00.0" west longitude due south to the point of commencement.

(c) Michikamau West Zone

All that area of Labrador commencing at the Gabbro Water Control Structure located at 53° 45' 40" north latitude and 65° 21' 50.7" west longitude;

Then following the Esker-Churchill Falls-Goose Bay Access Road in a westerly direction to its connection with the Esker/Churchill Falls Access Road located at Esker Railway Siding;

Then following the Quebec, North Shore and Labrador Rail Road in a northerly direction to a point located at 54° 6' 3.1" north latitude and 66° 28' 17.3" west longitude;

Then following a straight line in a northeasterly direction a point located at 54° 13' 19.1" north latitude and 65° 21' 50.7" west longitude;

Then following the 65° 21' 50.7" west longitude due south to the point of commencement located at the Gabbro Control Structure.

(d) Twin Falls Zone

All that portion of Labrador commencing at the Gabbro Water Control Structure located at 53° 45' 40" north latitude and 65° 21' 50.7" west longitude;

Then following the Esker-Churchill Falls-Goose Bay Access Road in an easterly direction to its intersection with the Churchill River at Bowdoin Canyon;

Then following Bowdoin Canyon in a generally southerly direction to its intersection with the Churchill River;

Then following the north bank of the Churchill River in a generally southeasterly direction to the confluence of the Unknown River;

Then following the north bank of the Unknown River in a westerly direction to its intersection with the Twin Falls Access Road;

Then following the Twin Falls Access Road in a southerly direction to the north west corner of Baikie Lake;

Then following the western shoreline of Baikie Lake in a southwesterly direction to the inflow of the Unknown River;

Then following the north bank of the Unknown River to the Ossokmanuam Water Control Structure;

Then following a straight line in a southwesterly direction to the intersection of the Trans-Labrador Highway with the west shoreline of the Ossokmanuam Reservoir;

Then following a straight line in a northwesterly direction to the Gabbro Water Control Structure, the point of commencement.

(e) Colville Lake Zone

All that area encompassed by a line commencing at the intersection of the Trans-Labrador Highway and the west shore of Ossokmanuam Lake;

Then following the Trans-Labrador Highway in a southwesterly direction to the intersection with the Quebec, North Shore and Labrador Railway;

Then following the Quebec, North Shore and Labrador Railroad in a northerly direction to Esker Railway Siding;

Then following the Esker-Churchill Falls-Goose Bay Access Road in a easterly direction to Gabbro Water Control Structure located at 53° 45' 40" north latitude and 65° 21' 50.7" west longitude;

Then following a straight line in southeasterly direction to the point of commencement.

(f) Lac Virot Zone

All that area of Labrador bounded by a line commencing at the intersection of the Trans-Labrador Highway and the Quebec, North Shore and Labrador Rail Road;

Then following the Trans-Labrador Highway in a westerly direction to the Nouveau Quebec-Labrador boundary;

Then following the Nouveau Quebec-Labrador boundary in a generally northerly direction to the point located at 53° 27' 38.4" north latitude and 66° 54' 57.9" west longitude on the Quebec-Labrador boundary;

Then following a straight line in a southeasterly direction to the point of commencement.

(g) Sawbill Lake Zone

All that of Labrador bounded by a line commencing at the intersection of the Trans-Labrador Highway and the Quebec, North Shore and Labrador Rail Road;

Then following the Quebec, North Shore and Labrador Rail Road in a northerly direction to the railway bridge crossing over the Evening Lake River near the Sawbill Railway Siding;

Then following a straight line in a southwesterly direction to 53° 27' 38.4" north latitude and 66° 54' 57.9" west longitude on the Quebec-Labrador boundary;

Then following a straight line in southeasterly direction to the point of commencement.

(h) Milner Lake Zone

All that of Labrador bounded by a line commencing at the Quebec, North Shore and Labrador Rail Road bridge crossing over the Evening Lake River;

Then following the Quebec, North Shore and Labrador Rail Road in a northerly direction to the intersection of the Esker-Churchill Falls Access Road at the Esker Railway Siding;

Then following a straight line in a northwesterly direction across Menihek Lake to the north shore mouth of Milner Lake River;

Then following the north bank of the Milner Lake River and the northern shorelines of Clark Lake, Square Lake, Coghill Lake, and Milner Lake to the intersection with Quebec-Labrador boundary at 53° 45' 21" north latitude;

Then following the Quebec-Labrador boundary in a southerly direction to the point on the Quebec-Labrador boundary located at 53° 27' 38.4" north latitude and 66° 54' 57.9" west longitude;

Then following a straight line in a northeasterly direction to the point of commencement.

(i) McPhayden River Zone

All that area of Labrador bounded by a line beginning at the point where the 54° 00' 00.0" north latitude intersects the Labrador-Quebec Boundary;

Then following 54° 00' 00.0" north latitude westward to its intersection with the north bank of the McPhayden River;

Then following the north bank of the McPhayden River to its outflow into Menihek Lake;

Then following a straight line in a northeasterly direction across Menihek Lake to a point located at 54° 6' 3.1" north latitude and 66° 28' 17.3" west longitude;

Then following the Quebec, North Shore and Labrador Rail Road in a southerly direction to its connection with the Esker/Churchill Falls Access Road located at Esker Railway Siding;

Then following a straight line in a northwesterly direction across Menihek Lake to the north shore mouth of Milner Lake River;

Then following the north bank of the Milner Lake River and the northern shorelines of Clark Lake, Square Lake, Coghill Lake, and Milner Lake to the intersection with Quebec-Labrador boundary at 53° 45' 21" north latitude;

Then following Quebec-Labrador boundary in a northerly direction to the point of commencement.

(j) Bay of Islands Zone

All that area of Labrador commencing at the western extremity of West Micmac Lake located at 54° 44' 15.9" north latitude and 60° 7' 26.5" west longitude;

Then following the southern shoreline of Kaipokok River in a westerly direction to Warrens Lake;

Then following the south shoreline of Warrens Lake in westerly direction to Kaipokok River;

Then following the southern bank of Kaipokok River in a westerly direction to its headwaters;

Then following the south shoreline of a string of lakes to the eastern extremity of Belly Fish Lake;

Then following a straight line in a generally northwesterly direction to the Kanairiktok River at the point where it joins the northwestern extremity of Snegamook Lake;

Then following the northern shoreline of Snegamook Lake in an easterly direction to Kanairiktok River;

Then following the north bank of the Kanairiktok River in a generally northeasterly direction to Kanairiktok Bay;

Then following the southeastern coastline of Kanairiktok Bay;

Then following the coastline of the Bay of Islands and the northwestern coastline of Kaipokok Bay to the mouth of the Kaipokok River;

Then following the southern bank of the Kaipokok River in a westerly direction to East Micmac Lake;

Then following the southern shoreline of the East Micmac Lake in a westerly direction to Kaipokok River;

Then following the southern bank of the Kaipokok River to West Micmac Lake and the point of commencement.

(k) Orma North Zone

All that area of Labrador commencing where the Smallwood Reservoir intersects the Sail Lake Dikes located at 54° 25' 26.6" north latitude and 63° 14' 30.9" west longitude;

Then following the Sail Lake River in a northerly direction to the Kanairiktok River;

Then following the north bank of Kanairiktok River to the intersection with 62° 55' 41" west longitude;

Then following that longitude due south to the intersection with the north shoreline of Pike Lake located at 53° 54' 47.8" north latitude and 62° 55' 41" west longitude;

Then following the north shoreline of Pike Lake in a north-westerly direction to confluence with the Pike River;

Then following the north bank of Pike River west to the confluence with the Smallwood Reservoir;

Then following the south shoreline of Smallwood Reservoir in a westerly direction to a point of land at position located at 53° 58' 40.2" north latitude and 63° 37' 13.7" west longitude;

Then following a straight line in a northwesterly direction to a position located at 54° 00' 00.0" north latitude and 64° 00' 00.0" west longitude;

Then following 64° 00' 00.0" west longitude due north to the intersection with 54° 21' 22.9" north latitude;

Then following a straight line in a northeasterly direction to the point of commencement.

(l) Orma South Zone

All that area of Labrador at the intersection of the north bank of Churchill River (Grand River) and 64° 00' 00.0" west longitude;

Then following that longitude due north to the intersection with 54° 00' 00.0" north latitude;

Thence following a straight line in a southeasterly direction to the intersection with a point of land located at 53° 58' 40.2" north latitude and 63° 37' 13.7" west longitude;

Then following the southern shoreline of Smallwood Reservoir in a easterly direction to the confluence with the Smallwood reservoir with north bank of Pike River;

Then following the north bank of Pike River east to Pike Lake;

Then following the north shoreline of Pike Lake in a easterly direction to the intersection with 62° 55' 41" west longitude;

Then following 62° 55' 41" west longitude due south to the Metchin River outlet on an unnamed lake located at 53° 36' 4.9" north latitude and 62° 55' 41" west longitude;

Then following the west bank of the Metchin River in a southwesterly direction to the Churchill River (Grand River);

Then following the north bank of Churchill River (Grand River) in a northwesterly direction to the point of commencement.

(m) Big River Zone

All that area of Labrador commencing at the western extremity of west Micmac Lake located at 54° 44' 15.9" north latitude and 60° 7' 26.5" west longitude;

Then following the southern bank of Kaipokok River and southern shoreline East Micmac Lake in a generally easterly direction to Kaipokok Bay;

Then following the southern shoreline of Kaipokok Bay to Cape Ailik;

Then following the coastline of the Labrador Sea in a generally southwesterly direction to the mouth of Big River;

Then following the northwestern bank of Big River in a southwesterly direction to the junction of Big River and a tributary flowing out of Little Michinappi Lake located at 54° 32' 22.7" north latitude and 59° 25' 44.7" west longitude which corresponds to the eastern extremity of Little Michinappi Lake;

Then following a straight line in a generally northwesterly direction to the western extremity of West Micmac Lake , the point of commencement.

(n) Nipishish Lake Zone

All that area of Labrador commencing at the western extremity of west Micmac Lake located at 54° 44' 15.9" north latitude and 60° 7' 26.5" west longitude;

Then following a straight line in a southeasterly direction to the eastern extremity of Little Michinappi Lake which corresponds to the junction of Big River and a tributary flowing out of Little Michinappi Lake located at 54° 32' 22.7" north latitude and 59° 25' 44.7" west longitude;

Then following a straight line in a generally southwesterly direction to its intersection with Main River located at 54° 12' 27" north latitude and 59° 47' 6.5" west longitude;

Then following a straight line to the southern extremity of the unnamed lake located at 53° 55' 54.3" north latitude and 60° 4' 38.8" west longitude at the Mulligan River;

Then following a straight line in a generally westerly direction to the confluence of the Naskaupi and Red Wine rivers;

Then following the western bank of the Naskaupi River to Naskaupi Lake;

Then following the eastern shoreline of Naskaupi Lake in a generally northerly direction to the Narrows;

Then following the unnamed river draining Namaycush Lake;

Then following the western shore of Namaycush Lake to its northern extremity;

Then following a straight line in a generally northerly direction to the southern extremity of Pocket Knife Lake;

Then following the western shore of Pocket Knife Lake to its northern extremity;

Then following a straight line in a generally northwesterly direction to the eastern extremity of Belly Fish Lake;

Then following the southern shoreline of the string of unnamed lakes in a generally northeasterly direction to the headwaters of the Kaipokok River;

Then following the southern shoreline of the Kaipokok River in a generally easterly direction to the point of commencement.

(o) Grand Lake Zone

All that area encompassed by a line commencing at the southern extremity of the unnamed lake located at 53° 55' 54.3" north latitude and 60° 4' 38.8" west longitude at the Mulligan River;

Then following the Mulligan River in a generally southerly direction to the confluence of Mulligan river with the unnamed river located at 53° 52' 2.6" north latitude and 60° 5' 26.7" west longitude;

Then following a straight line in a generally southwesterly direction to Mokami Hill;

Then following a straight line in a generally southwesterly direction to Ten Mile Point on Grand Lake;

Then following a straight line across Grand Lake to Cape Caribou;

Then following the southwest shoreline of Grand Lake and the shore of Nardini Pond to the Naskaupi River;

Then following the western bank of the Naskaupi River to the confluence of this river with the Red Wine River;

Then following a straight line in a generally easterly direction to the point of commencement.

(p) Seal Lake Zone

All that area of Labrador commencing at 53° 54' 47.8" north latitude and 62° 55' 41" west longitude and the north shoreline of Pike Lake;

Then following that longitude north to the intersection of the Kanairitok River located at 54° 27' 51.4" north latitude and 62° 55' 41" west longitude;

Then following the north shoreline of the Kanairitok River to the northwestern extremity Snegamook Lake;

Then following a straight line in a generally southeasterly direction to the eastern extremity of Belly Fish Lake;

Then following a straight line in a generally southeasterly direction to the northern extremity of Pocket Knife Lake;

Then following the western shoreline of the Pocket Knife Lake to its southern extremity;

Then following a straight line in a generally southeasterly direction to the northern extremity of Namaycush Lake;

Then following the western shoreline of the Namaycush Lake to the unnamed river draining it;

Then following this unnamed river to the Narrows;

Then following the eastern shoreline of Naskaupi Lake to the Naskaupi River;

Then following the western bank of the Naskaupi River in a generally southerly direction to the confluence of the Naskaupi and Wapustan Rivers;

Then following the northern shorelines of the Wapustan River and the unnamed lake at the headwaters of the Wapustan River to the western extremity of the lake located at 54° 8' 20.4" north latitude and 61° 49' 49.6" west longitude;

Then following a straight line in a generally southwesterly direction to the point of commencement.

(q) Double Mer Barrens

All that area of Labrador commencing at the intersection of Main River and Sandy Point on Double Mer Lake,

Then following the northern shoreline of Double Mer Lake to Whittles Point;

Then following a straight line in a southerly direction to the north shore of Valley Bay on Lake Melville located at 54° 2' 42.8" north latitude and 58° 56' 57.7" west longitude;

Then following the north shore of Lake Melville in an easterly direction to Double Mer Point;

Then following a straight line in a northeasterly direction to Jewel Point in Groswater Bay;

Then following the north shoreline of Groswater Bay to Long Point;

Then following a straight line in a northwesterly direction to Green Point;

Then following the shoreline in a southwesterly direction to the north bank of Tom Luscombe Brook;

Then following the north bank of Tom Luscombes Brook to a unnamed tributary entering Tom Luscombes Brook located at 54° 20' 23.3" north latitude and 58° 30' 56.4" west longitude;

Then following this unnamed tributary to its source in Tom Luscombes Pond;

Then following a straight line in a generally northwesterly direction to the junction of Big River and a tributary flowing out of Little Michinappi Lake located at 54° 32' 22.7" north latitude and 59° 25' 44.7" west longitude;

Then following a straight line in a generally southwesterly direction to its intersection with Main River located at 54° 12' 27" north latitude and 59° 47' 6.5" west longitude;

Then following the eastern bank of Main River in a southeasterly direction to Double Mer Lake and following the northern shoreline of Double Mer Lake to the point of commencement.

(r) Mulligan River

All that area of Labrador commencing at the intersection of Main River and Sandy Point on Double Mer Lake,

Then following the northern shoreline of Double Mer Lake to Whittles Point;

Then following a straight line in a southerly direction to the north shore of Valley Bay on Lake Melville located at 54° 2' 42.8" north latitude and 58° 56' 57.7" west longitude;

Then continuing on this straight line in a southeasterly direction to Burnt Head on Lake Melville;

Then following the shoreline of Lake Melville in a southwesterly direction to Upper Long Point;

Then following a straight line in a southwesterly direction to Montagnais Point;

Then following a straight line in a southwesterly direction to the outlet of an unnamed stream on Little Lake located at 53° 33' 26" north latitude and 60° 10' 22.4" west longitude;

Then following the northern shoreline of Little Lake to the Rapids;

Then following a straight line to the closest point on the opposite shoreline of the Rapids;

Then following the southern shoreline of the Rapids in a northwesterly direction to Grand Lake;

Then following the southwestern shoreline of Grand Lake in a northwesterly direction to Cape Caribou;

Then following a straight line in a generally northeasterly direction to Ten Mile Point on Grand Lake;

Then following a straight line in a generally northeasterly direction to Mokami Hill;

Then following a straight line in a generally northeasterly direction to the confluence of Mulligan river with the unnamed river located at 53° 52' 2.6" north latitude and 60° 5' 26.7" west longitude;

Then following the Mulligan River in a generally northerly direction to the outlet of an unnamed lake at its southern extremity located at 53° 55' 54.3" north latitude and 60° 4' 38.8" west longitude;

Then following a straight line in a generally northeasterly direction to its intersection with Main River located at 54° 12' 27" north latitude and 59° 47' 6.5" west longitude;

Then following the eastern bank of Main River in a southeasterly direction to Double Mer Lake and following the northern shoreline to the point of commencement.

©Earl G. Tucker, Queen's Printer



NEWFOUNDLAND AND LABRADOR REGULATION 100/09

Coyote Hunting Order
Newfoundland and Labrador, 2009-2010
under the
Wild Life Regulations
and the
Wild Life Act

(Filed November 18, 2009)

Under the authority of sections 81.2, 88 and 114 of the *Wild Life Regulations* and the authority of the *Wild Life Act*, I make the following Order.

Dated at St. John's, November 10, 2009.

Charlene Johnson
Minister of Environment and Conservation

ORDER

Analysis

- | | |
|---------------------------|-------------------|
| 1. Short title | 6. Limit |
| 2. Definition | 7. Prohibition |
| 3. Coyote licence holders | 8. Sunday hunting |
| 4. Other licence holders | 9. Repeal |
| 5. Specimens | |

Short title

1. This Order may be cited as the *Coyote Hunting Order Newfoundland and Labrador, 2009-2010*.

*Coyote Hunting Order
Newfoundland and Labrador, 2009-2010*

100/09

Definition	<p>2. In this order, "coyote shooting licence" means a licence issued under section 81.1 of the <i>Wild Life Regulations</i>.</p>
Coyote licence holders	<p>3. The open season for hunting of coyote by the holder of a coyote shooting licence is from September 12, 2009 to July 10, 2010.</p>
Other licence holders	<p>4. (1) The holder of a big game, small game, trapper or wolf shooting licence is permitted to hunt coyote by shooting, in the area and during the open season for which his or her licence is valid.</p> <p>(2) The holder of the licence referred to in subsection (1) shall only shoot coyotes using the type of firearm and ammunition that his or her licence permits.</p> <p>(3) A person who shoots coyotes with a shotgun under the authority of this section shall use shot size 2 or larger.</p>
Specimens	<p>5. A person who kills a coyote shall surrender the carcass to an office of the Wildlife Division within 14 days of the date of the kill and may keep or sell the skin.</p>
Limit	<p>6. There is no limit on the number of coyotes which may be shot by the holder of a coyote shooting licence or by a person under the authority of section 4.</p>
Prohibition	<p>7. A person shall not transport or possess any firearm under the authority of a valid game licence without being in possession of an outdoor identification card, or non-resident equivalent card, issued to that person.</p>
Sunday hunting	<p>8. Hunting with a firearm on Sundays shall be permitted across the entire province, beginning October 4, 2009 and ending April 30, 2010, for the species and only during the open seasons as described in this Order.</p>
Repeal	<p>9. The <i>Coyote Hunting Order Newfoundland and Labrador, 2008-2009</i>, Newfoundland and Labrador Regulations 66/08, is repealed.</p>

©Earl G. Tucker, Queen's Printer



**NEWFOUNDLAND AND LABRADOR
REGULATION 101/09**

Furbearing Animals Trapping and Shooting Order, 2009-2010
under the
Wild Life Regulations
and the
Wild Life Act

(Filed November 18, 2009)

Under the authority of sections 16, 25, 27 and 114 of the *Wild Life Regulations* and the *Wild Life Act*, I make the following Order.

Dated at St. John's, November 10, 2009.

Charlene Johnson
Minister of Environment and Conservation

ORDER

Analysis

- | | |
|--------------------------------------|--------------------|
| 1. Short title | 11. Prohibition |
| 2. Open season trapping and shooting | 12. Sunday hunting |
| 3. Prohibitions | 13. Repeal |
| 4. Neck snares | Schedule A |
| 5. Foot hold restraining traps | Schedule B |
| 6. Killing traps | Schedule C |
| 7. Live holding devices | Schedule D |
| 8. Rate of beaver harvest | |
| 9. Lynx | |
| 10. Wolves | |

Schedule E

Short title

1. This Order may be cited as the *Furbearing Animals Trapping and Shooting Order, 2009-2010*.

Open season trapping and shooting

2. (1) The open season for trapping on the Island of Newfoundland, except as provided for in specific management areas described in Schedule A, shall be

Beaver	Oct. 20, 2009 - Mar. 15, 2010
Ermine, weasel	Oct. 20, 2009 - Feb. 28, 2010
Mink	Nov. 1, 2009 - Feb. 28, 2010
Muskrat	Oct. 20, 2009- March 15, 2010
Otter	Oct. 20, 2009 - March 15, 2010
Squirrel	Oct. 20, 2009 - February 28, 2010

(2) The open season for trapping and shooting on the Island of Newfoundland, except as provided for in specific management areas described in Schedule A, shall be

Coyote	Oct. 20, 2009 - Feb. 1, 2010
Fox, coloured	Oct. 20, 2009 - Feb. 1, 2010
Fox, white	Oct. 20, 2009 - Feb.1, 2010
Lynx	No open season

(3) The open seasons for trapping and shooting within Labrador fur management zones as described in Schedule B shall be

(a) Northern Labrador Zone:

Beaver	Oct. 15, 2009 - May 31, 2010
Coyote	Oct. 15, 2009 - March 31, 2010
Ermine, weasel	Oct. 15, 2009 - March 31, 2010
Fox, coloured	Oct. 15, 2009 - March 31, 2010
Fox, white	Oct. 15, 2009 - May 31, 2010

Lynx	Oct. 15, 2009- March 31, 2010
Marten	Oct. 15, 2009 - March 31, 2010
Mink	Nov.1, 2009- March 31, 2010
Muskrat	Oct. 5, 2009 - May 31, 2010
Otter	Oct. 15, 2009 - March 31, 2010
Squirrel	Oct. 15, 2009 - March 31, 2010
Wolf	Oct. 15, 2009 - April 30, 2010
Wolverine	No open season.
Fisher	No open season.

(b) Southern Labrador Zone:

Beaver	Oct. 15, 2009 - May 31, 2010
Coyote	Nov. 1, 2009 - March 20, 2010
Ermine, weasel	Nov. 1, 2009 - March 20, 2010
Fox, coloured	Nov.1, 2009 - March 20, 2010
Fox, white	Nov. 1, 2009 - March 20, 2010
Lynx	Nov. 1, 2009- March 20, 2010
Marten	Nov. 1, 2009 - March 20, 2010
Mink	Nov.1, 2009- March 20, 2010
Muskrat	Oct. 15, 2009 - May 31, 2010
Otter	Oct. 15, 2009 - March 20, 2010
Squirrel	Nov. 1, 2009 - March 20, 2010
Wolf	Nov. 1, 2009 - April 30, 2010
Wolverine	No open season.
Fisher	No open season.

Prohibitions

3. (1) Notwithstanding section 2,

(a) the trapping and shooting of lynx is prohibited in Zone A and Zone B, as described in Schedule A; and

(b) the trapping and shooting of all furbearing animals is prohibited in the following areas:

(i) Brunette Island, Fortune Bay, and

(ii) Great Southern Harbour.

(2) A person shall not use a killing trap for beaver, muskrat or marten unless the trap is a killing trap described in Schedule C for that wildlife species and the trap is used in accordance with the conditions prescribed in Schedule C.

(3) A person shall not use a trap in the following areas described in Schedule A:

(a) the Pine Marten Study Area, excluding the Little Grand Lake Ecological Reserve;

(b) the Main River/ Upper Humber Study Area;

(c) the Little Grand Lake Wildlife Reserve; and

(d) the Glover Island Public Reserve, Glover Island

unless the trap is a trap described in Schedule D for each furbearing species and the trap is used in accordance with the requirements of Schedule D.

(4) A person shall not use a trap in the following areas described in Schedule A:

(a) the North West Grand Lake Area;

(b) the Charlottetown Enclave Area;

(c) the Terra Nova Area; and

(d) the Red Indian Lake Area

unless the trap is a trap described in Schedule E for each furbearing species and the trap is used in accordance with the requirements of Schedule E.

Neck snares

4. (1) Killing neck snares which are set on land for the purpose of taking furbearing animals shall be equipped with a noose locking device which shall be set in a manner so that the noose, once closed, is prevented from expanding.

(2) Subsection (1) shall not apply to the taking of squirrel.

Foot hold restraining traps

5. (1) Foot hold restraining traps set for beaver, muskrat, otter and mink shall be set in a manner which allows the animal to submerge and prevent it from resurfacing.

(2) Coyote and wolf may be taken with a foot holding restraining trap providing the device has a minimum space of 5 millimetres between the jaws when closed, or the device has pads of a rubber-like substance fastened to the trap jaws or the device is equipped with trap jaws of 9 millimetres or greater in thickness.

(3) A person shall not use a foot hold restraining trap for lynx unless it is a foot hold restraining trap as described in Schedule C for lynx and the trap is used in accordance with the conditions prescribed in Schedule C.

Killing traps

6. (1) Furbearing animals shall be taken only by means of a killing trap set in a manner as to kill the animal quickly.

(2) Subsection (1) shall not apply to the taking of fox, coyote, wolf or lynx.

(3) A person shall not trap, take or kill any furbearing animal by means of a trap or other device equipped with metal teeth, metal serrated edges, hooks or sharp devices.

(4) A person shall not use spring poles or foot hold traps in trees or poles, unless the trap is set as a killing trap.

Live holding devices

7. Live holding devices set on land for the taking of furbearing animals shall be checked daily.

Rate of beaver
harvest

8. (1) On the Island of Newfoundland, the holder of a beaver trapline licence shall harvest beaver at a rate of one beaver per active lodge on the trapline area identified in the licence.

(2) In Labrador, there is no limit on the number of beaver which may be taken by the holder of a trappers beaver licence.

Lynx

9. (1) Lynx taken during the open season for lynx shall be registered for tagging before the close of business hours on Friday, January 8, 2010.

(2) Lynx carcasses shall be surrendered to the Wild Life Division at the time of registration for tagging prescribed under subsection (1).

(3) A person shall not have in his or her possession any lynx pelt or any lynx parts, unless that person holds a valid trappers licence and the pelt or pelt parts are registered as required in subsections (1) and (2).

(4) A licensed trapper who takes lynx accidentally during the trapping seasons for other species, other than those trapping periods prescribed for lynx, shall within 7 days of the taking the lynx, surrender it to the Wild Life Division.

(5) This section shall not apply to the taking of lynx in Labrador.

Wolves

10. A person who takes a wolf shall surrender the lower jawbone or complete skull of each wolf taken to the Wild Life Division by May 14, 2010.

Prohibition

11. A person shall not transport or possess any firearm under the authority of a valid hunting license without being in possession of an outdoor identification card, or non-resident equivalent, issued to the person.

Sunday hunting

12. Hunting with a firearm on Sundays shall be permitted across the entire province, beginning October 4, 2009 and ending April 30, 2010, for the species and during the seasons described in this order.

Repeal

13. The *Furbearing Animals Trapping Order, 2008-2009*, Newfoundland and Labrador Regulation 76/08, is repealed.

Schedule A

(a) Pine Marten Study Area

That part of the Island of Newfoundland bounded by a line beginning at the intersection of the Trans Canada Highway, Route 1, and the Camp 33 Road;

Then following the Camp 33 Road to the southwestern extremity of Grand Lake;

Then following the shoreline of Grand Lake to the mouth of Red Indian Brook a distance of approximately 15 kilometres to a small lake on its headwaters;

Then following a straight line in a generally southeasterly direction to the southeastern extremity of the Lake of the Hills;

Then following the western bank of the brook flowing out of Lake of the Hills to Otter Pond;

Then following the western shore of Otter Pond and the western bank of the brook flowing out of Otter Pond into Lloyds River;

Then following the northern bank of Lloyds River and the northern shore of Lloyds Lake and the northern bank of Lloyds River, west of Lloyds Lake, to the mouth of the brook flowing out of Cormacks Lake;

Then following the eastern or northern bank of this brook to Cormacks Lake;

Then following a straight line in a generally northerly direction approximately 8 kilometres to a point on the headwaters of Little Barachois Brook;

Then following the northern bank of Little Barachois Brook to its intersection with the eastern boundary of the Barachois Pond Provincial Park;

Then following the eastern and northern boundaries of the park to the Trans Canada Highway;

Then following the Trans Canada Highway to the point of commencement.

Excluding the Little Grand Lake Provisional Ecological Reserve established by the *Little Grand Lake Provisional Ecological Reserve Regulations*, Newfoundland and Labrador Regulation 84/02, as described in the *Little Grand Provisional Ecological Reserve Order*, Newfoundland and Labrador Regulation 83/02, made under the authority of the *Wilderness and Ecological Reserves Act*.

(b) Main River/Upper Humber Area

All that area of the Island of Newfoundland, commencing at a tributary on Main River UTM 481,975 metres east 5,522,600 metres north;

Then following this tributary in a generally northerly direction to UTM 483,840 metres east 5,528,225 metres north;

Then following a straight line in a southeasterly direction to UTM 488,460 metres east 5,525,000 metres north;

Then following a straight line in an easterly direction to the eastern extremity of a small pond at UTM 498,485 metres east 5,525,000 metres north;

Then following the eastern shoreline of the pond to its outlet;

Then following a chain of brooks in a southerly direction to UTM 498,771 metres east 5,522,615 metres north;

Then following a straight line in a generally southeasterly direction to UTM 502,332 metres east 5,518,590 metres north;

Then following a straight line in a generally southwesterly direction to UTM 499,538 metres east 5,516,260 metres north;

Then following a straight line in a southerly direction to the outlet of a small pond at UTM 499,615 metres east 5,513,620 metres north;

Then following a stream that flows in a southerly direction to Main River;

Then following Main River in a westerly direction to a small tributary at UTM 495,570 metres east 5,510,540 metres north;

Then following that tributary and a chain of ponds in a generally westerly direction to where a small stream is intersected by the Upper Humber Forest Access Road at UTM 480,650 metres east 5,509,735 metres north;

Then following a straight line in a westerly direction to the east shore of a small pond at UTM 469,023 metres east 5,510,070 metres north;

Then following the north side of that pond and a connected tributary in a northwesterly direction to its intersection with the eastern boundary of Gros Morne National Park at UTM 466,335 metres east 5,510,602 metres north;

Then following the boundary of the park in a northerly direction to where it intersects a lake at UTM 461,750 metres east 5,529,000 metres north;

Then following the south shoreline of that lake in an easterly direction to its most eastern extremity;

Then following a straight line in an easterly direction to UTM 466,087 metres east 5,528,540 metres north;

Then following the southern shore of Parsons Pond River in an easterly direction to the point of commencement.

(c) Northwest Grand Lake Area

All that area of the Island of Newfoundland bounded by a line beginning at the intersection of the Trans Canada Highway, Route 1, and Camp 33 Road;

Then following Camp 33 Road to the southwest extremity of Grand Lake;

Then following the north shoreline of Grad Lake in a north-easterly direction to the Humber Canal;

Then following the south bank of the Humber Canal to its intersection with the TCH at Deer Lake;

Then following the TCH in a southwesterly direction to the point of commencement.

(d) Terra Nova Area

All that area of the Island of Newfoundland bounded by a line beginning at the intersection of North West River and the Terra Nova National Park, TNNP, boundary at UTM coordinates 706,250 metres east and 5,365,250 metres north;

Then following the north bank of the said river in a westerly direction to UTM coordinates 664,125 metres east and 5,346,625 metres north;

Then following a straight line in a northwesterly direction to UTM coordinates 663,750 metres east and 5,353,125 metres north;

Then following a straight line in a westerly direction to the northeastern extremity of Kepenkeck Lake;

Then following a straight line in a northwesterly direction to the eastern extremity of Newton's Lake;

Then following a straight line in a northerly direction to the eastern extremity of South West Pond;

Then following a straight line in a northeasterly direction to the western extremity of Dead Wolf Pond;

Then following the southern shoreline of Dead Wolf Pond to the mouth of a small stream entering the pond at its eastern extremity;

Then following this stream to its headwaters pond;

Then following a straight line for approximately 500 metres due east to an unnamed pond;

Then following a stream exiting this pond at its southeastern extremity;

Then following this stream in a southeasterly direction to its outflow in Riverhead Brook;

Then following this brook in an easterly direction to its mouth in Gambo Pond;

Then following the north shore of Gambo Pond to Gambo Brook;

Then following the west bank of Gambo Brook to its intersection with the Trans Canada Highway, TCH, Route 1;

Then following the TCH in an easterly direction to its intersection with the TNNP boundary;

Then following the western boundary of TNNP in a southerly direction to the point of commencement.

(e) Charlottetown Enclave Area

All that area of the Island of Newfoundland bounded by a line beginning at the intersection of the Terra Nova National Park, TNNP, boundary and the north shoreline of Clode Sound, Bonavista Bay at UTM coordinates 720,554 metres east and 5,367,279 metres north;

Then following the TNNP boundary in a northerly direction to UTM coordinates 720,507 metres east and 5,370,209 metres north;

Then following the TNNP boundary in a northeasterly direction to UTM coordinates 721,554 metres east and 5,371,792 metres north;

Then following the TNNP boundary in a southeasterly direction to its intersection with the north shoreline of Clode

Sound, Bonavista Bay at UTM coordinates 722,550 metres east and 5,369,850 metres north;

Then following the shoreline of Clode Sound, Bonavista Bay in a southwesterly direction to the point of commencement.

(f) Red Indian Lake Area

All that area of the Island of Newfoundland bounded by a line beginning at the mouth of Victoria River and Red Indian Lake;

Then following the north bank of Victoria River in a southwesterly direction to Victoria Lake;

Then following a mid-way line between the north and south shorelines of Victoria Lake to the mouth of a small river entering Victoria Lake at its southwestern extremity;

Then following the north bank of the Victoria River to a point opposite the mouth of a brook flowing from Peter Strides Pond;

Then following a straight line in a northerly direction to the intersection of the Pine Marten Study Area and Lloyds River at the mouth of the brook flowing from Cormack Lake;

Then following the Pine Marten Study Area boundary along Lloyds River in a northeasterly direction to the mouth of Otter Pond Brook;

Then following the western bank of Otter Pond Brook, the western shore of Otter Pond and the west bank of Otter Pond Brook to Lake of the Hills;

Then following a straight line in a northwesterly direction to UTM co-ordinates 471,250 metres east and 5,379,000 metres north;

Then following a straight line in a northeasterly direction to its intersection with Clench Brook at UTM co-ordinates 500,875 metres east and 5,401,000 metres north;

Then following the south bank of Clench Brook to its mouth on Red Indian Lake;

Then following a straight line in an easterly direction to the point of commencement.

(g) Lynx Zone A: Northern Region

All that area of the Island of Newfoundland bounded by a line beginning at the intersection of the Burgeo Highway with the southern bank of the Lloyd's River and;

Then following the Burgeo Highway in a southerly direction to the northern extent of the intersection causeway to Grandy Island and the coastline of insular Newfoundland;

Then following the coastline in a generally westerly direction to Cape Ray;

Then northerly along the western shoreline of the Great Northern Peninsula to Cape Onion;

Then southerly following the eastern shoreline of the Great Northern Peninsula to the confluence of Hampton River with White Bay;

Then following the north-east coast of insular Newfoundland and Labrador in a generally easterly direction to the mouth of the Terra Nova River at its outflow located at Glovertown South;

Then following the southern bank of the Terra Nova River to its confluence with Terra Nova Lake;

Then following the southern shoreline of Terra Nova Lake in a generally south-westerly direction to its southern extremity;

Then following the southern shoreline of the Terra Nova River in a generally south-westerly direction to Mollygua-jeck Lake;

Then following the southern shoreline of Mollyguaheck Lake to its southern extremity where a small stream enters the lake;

Then following a straight line in a westerly direction to the point of commencement.

(h) Lynx Zone B: Southern Region

All that area of the Island of Newfoundland bounded by a line beginning at a point known as Main Gut at the mouth of the St. George's River in St. Georges Bay;

Then following the southern shoreline of St. George's River in a easterly direction to the Trans Canada Highway;

Then following the Trans Canada Highway in a southerly direction to the Burgeo Highway;

Then following the Burgeo Highway in a easterly direction to the its intersection with the south bank of the Llyods River;

Then following a straight line in an easterly direction to the southern extremity of Mollyguaheck Lake where a small stream enters the lake;

Then following the southern shoreline of Mollyguaheck Lake to Terra Nova River;

Then following the southern bank of the Terra Nova River to Terra Nova Lake;

Then following the southern shoreline of Terra Nova Lake to Terra Nova River;

Then following the southern bank of the Terra Nova River to its mouth (outflow) at Glovertown South;

Then following the coastline of insular Newfoundland including all offshore islands and excluding all areas within National Park jurisdiction in a southerly direction to the point of commencement.

(i) Little Grand Lake Wild Life Reserve

The Little Grand Lake Wild Life Reserve established by the *Little Grand Lake Wild Life Reserve Regulations*, Newfoundland and Labrador Regulation 85/02.

(j) Glover Island

The Glover Island Public Reserve established by the *Glover Island Public Reserve Regulations*, Newfoundland and Labrador Regulation 87/02, as described in the *Glover Island Public Reserve Order*, Newfoundland and Labrador Regulation 86/02, made under the authority of the *Lands Act*.

Schedule B

(a) Labrador North Fur Zone

All that area of Labrador, including offshore islands, lying north of a line commencing at a point on the coast at 54° north latitude;

Then following a line due west to its intersection with 62° west longitude;

Then following a line due north to its intersection with 55° north latitude;

Then following a line due west along 55° north latitude to its intersection with the Labrador-Quebec border;

Then following the Labrador-Quebec border in a generally northerly direction to Cape Chidley;

Then following the coastline of Labrador in a generally south easterly direction to the point on the coast at 54° north latitude, the point of commencement.

(b) Labrador South Fur Zone

All that area of Labrador, including offshore islands, lying south of a line commencing at a point on the coast at 54° north latitude;

Then following a line due west to its intersection with 62° west longitude;

Then following a line due north to its intersection with 55° north latitude;

Then following a line due west along 55° north latitude to its intersection with the Labrador-Quebec border;

Then following the Labrador-Quebec border in a generally southerly direction, then easterly direction to the coast of Labrador;

Then following the coastline of Labrador in a generally north westerly direction to the point on the coast at 54° north latitude, the point of commencement.

Schedule C

List of Killing traps certified for use by species under certain stated conditions:

When trapping beaver either underwater and on land:

Belisle Classic 330

LDL C 280

Belisle Super X 280

LDL C 330

LDL C280 Magnum

Belisle Super X 330

Rudy 280

B.M.I. 330 Body Gripper

B.M.I. 280 Body Gripper

Rudy 330

Bridger 330

Sauvageau 2001-12

Sauvageau 2001-8

Sauvageau 2001- 11

Species specific 330 Dislocator Half Magnum

Species specific 440 Dislocator Half Magnum

Woodstream Oneida Victor Conibear 280

Woodstream Oneida Victor Conibear 330

Sauvageau 1000 -11F

Duke 330

LDL C330 Magnum

When trapping marten:

Belisle Super X 120

Rudy 120 Magnum

Belisle Super X 160

Rudy 160 Plus

B.M.I. 126 Magnum Body Gripper

Sauvageau C120 Magnum

LDL B120 Magnum

Sauvageau 2001-5

Koro #1

Sauvageau 2001-6

Northwoods 155

When trapping muskrat on land:

Belisle Super X 120

Bridger 120

Sauvageau 2001-5

B.M.I. 120

LDL B120 Magnum

Triple M

B.M.I. 120 Magnum

Rudy 120 Magnum

Duke 120

B.M.I.126 Magnum

Sauvageau C120 Magnum

Koro Muskrat

Woodstream Oneida Victor Conibear 110

Sauvageau C120 "Reverse Bend"

Woodstream Oneida Victor Conibear 120

When trapping muskrat underwater:

Any jaw type trap (body gripping or leghold) set as a submersion set that exerts clamping force on a muskrat and maintains a muskrat underwater.

List of foot hold restraining traps certified for use for lynx under specific stated conditions.

When trapping lynx:

Belisle Footsnare #6

Oneida Victor #3 Soft Catch equipped with two coil springs.

Oneida Victor #3 Soft Catch equipped with 4 coil springs

Oneida Victor # 3 equipped with a minimum 8mm thick, non-offset steel jaw, 4 coil springs and an anchoring swivel centre mounted on a base plate.

Schedule D

Trapping and setting requirements by species approved for use in the Main River/Upper Humber Study Area, Pine Marten Study Area (Excluding the Little Grand Lake Provisional Ecological Reserve), the Little Grand Lake Wild Life Reserve and the Glover Island Public Reserve.

Target Species and Approved Trap	Setting Requirements
Beaver Conibear	Trap jaws shall be completely submerged requiring target species to dive.
Beaver Subma- rine Cage	Cage shall be completely submerged.
Beaver Snare Pole	Snares shall be completely submerged.
Ermine (weasel) or Squirrel Rat Trap	Victor rat trap, whether baited or not, shall be completely enclosed inside a wooden box with a 1.5" hole at one end.
Fox , Coyote or Lynx Restraining Neck Snare	<ul style="list-style-type: none">- Wire shall be 3/32 " or greater- 360° swivel required at the attachment point-The stop on the snare loop shall be fastened so that the loop will close to a minimum 8" circumference.-The snare shall be fastened to an immovable object with no drags.-The snare may be set with or without the use of bait.
Mink Conibear	The floating mink box-trap shall be set in the entrance of a floating wooden box, whether or not the trap is baited, and the entrance to the box shall be completely submerged.
Otter, Mink or Muskrat Subma- rine Cage	The cage shall be completely submerged.

Otter, Mink or Muskrat Coni-bear	Trap jaws shall be completely submerged requiring target species to dive.
Beaver, Otter, Muskrat or Mink Slide-lock Drowner	<ul style="list-style-type: none">-The trap shall be a foot hold type with a slide lock attached.- The trap shall be placed at least 5' from the shoreline or on a semi-submerged log with no land-based access.-The snare may be set with or without the use of bait.-The water shall be sufficiently deep so as to ensure drowning.
Squirrel Pole	Snares shall use 16 pound test snare wire attached to a horizontal or leaning pole, snares 3/4"-1" up off the pole and having 1.5"-1.75"diameter loop. No bait shall be used.

Schedule E

Traps and setting requirements by species approved for use in the North West Grand Lake Area, the Charlottetown Enclave Area, the Terra Nova Area and the Red Indian Lake Area.

All those trap and setting requirements as described in Schedule D, and in addition, those outlined below:

Target Species and Approved Trap	Setting Requirements
Fox Coyote or Lynx Killing Neck Snare	The snare shall be equipped with a lock

©Earl G. Tucker, Queen's Printer



NEWFOUNDLAND AND LABRADOR REGULATION 102/09

*Open Season Small Game Hunting and Snaring
Order, 2009-2010*
under the
Wild Life Regulations
and the
Wild Life Act

(Filed November 18, 2009)

Under the authority of sections 73, 80, 92 and 114 of the *Wild Life Regulations* and the *Wild Life Act*, I make the following Order.

Dated at St. John's, November 10, 2009.

Charlene Johnson
Minister of Environment and Conservation

ORDER

Analysis

- | | |
|--|------------------------------|
| 1. Short title | 7. Small game licence |
| 2. Areas defined | 8. Field possession limit |
| 3. Open season, hunting and shooting | 9. Prohibition |
| 4. Open season, snaring | 10. Sunday hunting |
| 5. Hunting, shooting, and snaring prohibited | 11. Approved snaring devices |
| 6. Bag limits | 12. Repeal |
| | Schedule |

Short title
Areas defined

1. This Order may be cited as the *Open Season Small Game Hunting and Snaring Order, 2009-2010*.

2. For the purpose of the various small game hunting, shooting, and snaring seasons the applicable areas are defined in the Schedule.

Open season,
hunting and shoot-
ing

3. The open seasons for hunting, shooting small game shall be

(a) for artic hare

(i) no open season throughout the province excluding Labrador and the islands adjacent to Labrador, and

(ii) for October 1, 2009 to April 20, 2010 throughout Labrador and the islands adjacent to Labrador;

(b) for snowshoe or varying hare

(i) October 10, 2009 to February 28, 2010, throughout the province excluding Labrador, the islands adjacent to Labrador, Great Island, Little Bay Islands, and Bell Island in Conception Bay,

(ii) October 10, 2009 to December 27, 2009, Great Island,

(iii) October 10, 2009 to November 1, 2009, Little Bay Islands,

(iv) October 1, 2009 to April 20, 2010 throughout Labrador and the islands adjacent to Labrador, and

(v) no open season, Bell Island, Conception Bay;

(c) for ptarmigan

(i) September 19, 2009 to November 1, 2009 in the Burin Area and the Avalon/Swift Current Area, excluding the Fair Haven Area,

(ii) no open season, Fair Haven Area,

(iii) September 19, 2009 to November 22, 2009 in the Topsails Area,

- (iv) September 19, 2009 to December 13, 2009 throughout the remainder of the province excluding Labrador, the island adjacent to Labrador, the Avalon/Swift Current Area, the Burin Area, and the Topsails Area, and
- (v) October 1, 2009 to April 20, 2010 throughout Labrador and the islands adjacent to Labrador;
- (d) for ruffed grouse and spruce grouse
 - (i) September 19, 2009 to December 27, 2009 throughout the province excluding Labrador and the islands adjacent to Labrador, and
 - (ii) October 1, 2009 to April 20, 2010 throughout Labrador and the islands adjacent to Labrador; and
- (e) for porcupine, October 1, 2009 to March 31, 2010 throughout Labrador and the islands adjacent to Labrador.

Open season,
snaring

4. The open season for snaring small game shall be

- (a) for artic hare
 - (i) no open season throughout the province excluding Labrador and the islands adjacent to Labrador, and
 - (ii) October 1, 2009 to March 31, 2010 throughout Labrador and the islands adjacent to Labrador;
- (b) for snowshoe or varying hare
 - (i) October 10, 2009 to December 27, 2009, Great Island,
 - (ii) October 10, 2009 to November 8, 2009 Little Bay Islands,
 - (iii) no open season, Bell Island, Glover Island in Grand Lake, the Pine Marten Study Area, the Main River Study Area, Little Grand Lake Wildlife Reserve, and Little Grand Lake Provisional Ecological Reserve,

- (iv) October 10, 2009 to February 28, 2010 through out the province excluding Labrador, the islands adjacent to Labrador, Great Island, Little Bay Islands, Bell Island in Conception Bay, Glover Island in Grand Lake, the Pine Marten Study Area, the Main River Study Area, Little Grand Lake Wildlife Reserve, and Little Grand Lake Provisional Ecological Reserve, and
 - (v) October 1, 2009 to March 31, 2010 throughout Labrador and the islands adjacent to Labrador;
- (c) for ptarmigan
- (i) no open season, Glover Island in Grand Lake, the Pine Marten Study Area, the Fair Haven Area, the Burin Area, the Mail River Study Area, Little Grand Lake Wildlife Reserve, and Little Grand Lake Provisional Ecological Reserve, and
 - (ii) October 10, 2009 to February 28, 2010 throughout the province excluding Labrador, the islands adjacent to Labrador, Glover Island in Grand Lake, the Pine Marten Study Area, the Fair Haven Area, the Burin Area, the Main River Study Area, Little Grand Lake Wildlife Reserve, and Little Grand Lake Provisional Ecological Reserve, and
 - (iii) October 1, 2009 to March 31, 2010 throughout Labrador and the islands adjacent to Labrador;
- (d) for ruffed grouse and spruce grouse
- (i) no open season , Glover Island in Grand Lake, the Pine Marten study Area, the Main River Study Area, Little Grand Lake Wildlife Reserve, and Little Grand Lake Provisional Ecological Reserve,
 - (ii) October 10, 2009 to February 28, 2010 throughout the province excluding Labrador, the islands adjacent to Labrador, Glover Island in Grand Lake, the Pine Marten Study Area, the Main River Study Area, Little Grand Lake Wildlife Reserve, and Little Grand Lake Provisional Ecological Reserve, and

- (iii) October 1, 2009 to March 31, 2010 throughout Labrador and the islands adjacent to Labrador.

Hunting, shooting,
and snaring prohib-
ited

5. Notwithstanding the open seasons described in sections 3 and 4 all small game hunting, shooting, and snaring is prohibited on the following islands:

- (a) Kelly's Island, Conception Bay; and
(b) Brunette Island, Fortune Bay.

Bag limits

6. (1) The bag limits shall be

- (a) for the province, excluding Labrador and the islands adjacent to Labrador, for shooting and snaring
- (i) arctic hare, not applicable, no open season,
- (ii) snowshoe or varying hare, a possession limit of 40 rabbits,
- (iii) ptarmigan
- (A) a daily limit of 12 birds and field possession limit of 24 birds except as provided below, and
- (B) in the Avalon/Swift Current, Burin and Topsails Areas as described in the Schedule A a daily limit of 6 birds and field possession limit of 12 birds, and
- (iv) ruffed grouse and spruce grouse, a daily bag limit of 20 birds with a field possession limit of 40 birds, ruffed and spruce grouse combined; and
- (b) for Labrador, and the islands adjacent to Labrador, for shooting or snaring
- (i) arctic hare, no limit,
- (ii) snowshoe or varying hare, no limit,
- (iii) ptarmigan, daily bag limit of 25 birds with a field possession limit of 50 birds,

(iv) ruffed and spruce grouse

(A) Northern Labrador, no limit, and

(B) Southern Labrador, daily bag limit of 20 with field possession limit of 40 birds, spruce and ruffed grouse combined, and

(v) porcupine, a possession limit of one porcupine.

(2) Notwithstanding subparagraph (1)(a)(ii), the possession limit does not apply to persons licensed under the *Food and Drug Act* (Canada), who may exceed the bag limit for snowshoe hare on their business premises for commercial purposes.

Small game licence

7. A resident who has resided permanently in the Torngat Mountains Electoral District for a period of not less than 6 consecutive months immediately prior to applying for the licence, may be issued a small game licence free of charge.

Field possession
limit

8. Field possession limit refers to the number of birds a small game licence holder may carry while hunting or travelling in the country.

Prohibition

9. A person shall not transport or possess any firearm under the authority of a valid hunting licence without being in possession of an outdoor identification card, or non-resident equivalent, issued to the person.

Sunday hunting

10. Hunting with a firearm on Sundays shall be permitted across the entire province, beginning October 4, 2009 and ending April 30, 2010, for the species and during the seasons as described in this Order, including any prescribed season for wild geese, wild ducks and snipe.

Approved snaring
devices

11. Approved snaring devices may only include

(a) brass wire not larger than 22 gauge attached to a firm anchor; and

(b) picture cord not exceeding 6 strands attached to a firm anchor.

*Open Season Small Game Hunting and Snaring
Order, 2009-2010*

102/09

Repeal

12. The *Open Season Small Game Hunting and Snaring Order, 2008-2009*, Newfoundland and Labrador Regulation 65/08, is repealed.

Schedule

(a) Avalon/Swift Current Area

All that area of the Island of Newfoundland bounded by a line beginning at Friar Head in Fortune Bay;

Then northward following the eastern shoreline of Long Harbour and the Long Harbour River a distance of approximately 40 kilometres to the location where the Bay d'Espoir transmission line crosses the Long Harbour River;

Then following straight lines to the Tolt and the northern extremity of Whitehead Pond;

Then following the north shore of Whitehead Pond and the eastern shore of Pipers Hole River to Route 210;

Then following Route 210 to Goobies on the Trans Canada Highway;

Then following the Trans Canada Highway in a southerly direction to its junction with the local road providing access to the community of Sunnyside;

Then following the local road providing access to the Town of Sunnyside to the shoreline of Trinity Bay;

Then following the shorelines of Trinity, Conception, St. Mary's and Placentia Bays to the point where the shoreline meets the Piper's Hole River, thence following the eastern shoreline of the Piper's Hole River in a general northerly direction to the bridge that crosses the Burin Peninsula Highway, Route 210;

Then following Route 210 in a generally southerly direction to its intersection with the Terrenceville Highway;

Then following the north side of the Terrenceville highway to the shoreline of Fortune Bay;

Then following the shoreline of Fortune Bay to the point of commencement, including all offshore islands lying counter-clockwise from Friar Head, Fortune Bay, to the community of Sunnyside, Trinity Bay.

(b) Burin Area

All that area of the Island of Newfoundland bounded by a line beginning at the community of Terrenceville;

Then following the Terrenceville Highway to its intersection with the Burin Peninsula Highway Route 210;

Then following Route 210 in a generally northerly direction to where it crosses the bridge on the Piper's Hole River;

Then following the eastern shore of Piper's Hole River in a southerly direction to its mouth in Placentia Bay;

Then following the shoreline of Placentia and Fortune Bay to the point of commencement, excluding all offshore islands.

(c) Fair Haven Area

All that area of the Avalon Peninsula of the Island of Newfoundland bounded by a line beginning at the Chance Cove intersection with the Trans Canada Highway;

Then following a straight line in a southerly direction for approximately 50 metres to the northern shore of Gull Pond;

Then following the northern and western shore of Gull Pond to its southern extremity;

Then following a straight line for a distance of approximately 300 metres to the eastern shore of Big Gull Pond;

Then following the eastern shore of Big Gull Pond to its south eastern extremity;

Then following the eastern shores of the string of brooks and ponds leading southwest to where they empty into Placentia Bay near Little Pinchgut Cove;

Then following the coastline in a generally southerly direction to the mouth of Maturin Brook near the community of Long Harbour;

Then following the eastern shores of Maturin Brook and Maturin Ponds to the headwaters where it intersects the railway line;

Then following the railway line in a southerly direction to its intersection with the transmission line, a distance of approximately 2 kilometres;

Then following the transmission line in a northeasterly direction to the Trans Canada Highway;

Then following the Trans Canada Highway to the point of commencement.

(d) The Topsails

All that area of the Island of Newfoundland bounded by a line beginning at the mouth of Hinds Brook in Grand Lake;

Then following the southeastern shoreline of Grand Lake, Sandy Lake and Birchy Lake to the eastern end of Birchy Lake;

Then following a straight line to the closest point on the Trans Canada Highway;

Then following the Trans Canada Highway in a generally easterly and southerly direction to Badger;

Then following a straight line to the closest point on the south bank of the Exploits River;

Then following the Exploits River to Exploits Dam;

Then following the shoreline of Red Indian Lake in first, a generally northerly direction and then, a westerly direction to the mouth of Buchan's Brook;

Then following Buchan's Brook to Buchan's Lake;

Then following the western shoreline of Buchan's Lake to its northwestern extremity;

Then following a straight line to the southeastern extremity of Hind's Lake;

Then following the eastern shoreline of Hind's Lake to its outlet in Hind's Brook;

Then following the south bank of Hind's Brook to the point of commencement.

(e) Northern Labrador Zone

All that portion of Labrador, including adjacent islands, north of a line commencing at a point on the Labrador coast at 54° north latitude;

Then following the westerly line of 54° north latitude to a point where this line intersects with 62° west longitude;

Then following a northerly direction along the 62° west longitude line to a point where it intersects with the 55° north latitude line;

Then following the 55° north latitude line in a westerly direction to a point where it intersects with the Quebec/Labrador border;

Then following the Labrador-Quebec Boundary in a northerly and easterly direction to a point where this boundary intersects 58° 26' 37.8" north latitude;

Then following a straight line in a south-easterly direction for 11941 meters to a point located at 58° 22' 14.2" north latitude and 63° 42' 2.3" west longitude;

Then following a straight line in a north-easterly direction for 15097 meters to a point located at 58° 25' 31.5" north latitude and 63° 27' 51.9" west longitude;

Then following a straight line for 8960 meters in a north-easterly direction to a point where this boundary intersects 58° 28' 12.5" north latitude and coast line of mainland Labrador.

(f) Southern Labrador Zone

All that portion of Labrador, including adjacent islands, lying to the south of a line commencing at a point on the Labrador coast at 54° north latitude;

Then following the westerly line of 54° north latitude to a point where this line intersects with 62° west longitude;

Then following a northerly direction along the 62° west longitude line to a point where it intersects with the 55° north latitude line;

Then following the 55° north latitude line in a westerly direction to a point where it intersects with the Quebec/Labrador border.

(g) Pine Marten Study Area

All that part of the Island of Newfoundland bounded by a line beginning at the intersection of the Trans Canada Highway, Route 1, and the Camp 33 Road;

Then following the Camp 33 Road to the southwestern extremity of Grand Lake;

Then following the shoreline of Grand Lake to the mouth of Red Indian Brook;

Then following the southern bank of Red Indian Brook a distance of approximately 15 kilometres to a small lake on its headwaters;

Then following a straight line in a generally southeasterly direction to the southeastern extremity of Lake of the Hills;

Then following the western bank of the brook flowing out of Lake of the Hills to Otter Pond;

Then following the western shore of Otter Pond and the western bank of the brook flowing out of Otter Pond into Lloyds River;

Then following the northern bank of Lloyds River and the northern shore of Lloyds Lake and the northern bank of Lloyds River, west of Lloyds Lake, to the mouth of the brook flowing out of Cormacks Lake;

Then following the eastern or northern bank of this brook to Cormacks Lake;

Then following a straight line in a generally northerly direction approximately 8 kilometres to a point on the headwaters of Little Barachois Brook;

Then following the northern bank of Little Barachois Brook to its intersection with the eastern boundary of the Barachois Pond Provincial Park;

Then following the eastern and northern boundaries of the park to the Trans Canada Highway;

Then following the Trans Canada Highway to the point of commencement.

(h) Main River Study Area

All that area of the Island of Newfoundland, commencing at a tributary on Main River UTM 481,975 metres east 5,522,600 metres north;

Then following this tributary in a generally northerly direction to UTM 483,840 metres east 5,528,225 metres north;

Then following a straight line in a southeasterly direction to UTM 488,460 metres east 5,525,000 metres north;

Then following a straight line in an easterly direction to the eastern extremity of a small pond at UTM 498,485 metres east 5,525,000 metres north;

Then following the eastern shoreline of the pond to its outlet;

Then following a chain of brooks in a southerly direction to UTM 498,771 metres east 5,522,615 metres north;

Then following a straight line in a generally southeasterly direction to UTM 502,332 metres east 5,518,590 metres north;

Then following a straight line in a generally southwesterly direction to UTM 499,538 metres east 5,516,260 metres north;

Then following a straight line in a southerly direction to the outlet of a small pond at UTM 499,615 metres east 5,513,620 metres north;

Then following a stream that flows in a southerly direction to Main River;

Then following Main River in a westerly direction to a small tributary at UTM 495,570 metres east 5,510,540 metres north;

Then following the tributary and a chain of ponds in a generally westerly direction to where a small stream is intersected by the Upper Humber Forest Access Road at UTM 480,650 metres east 5,509,735 metres north;

Then following a straight line in a westerly direction to the east shore of a small pond at UTM 469,023 metres east 5,510,070 metres north;

Then following the north side of the pond and a connecting tributary in a northwesterly direction to its intersection with the eastern boundary of Gros Morne National Park at UTM 466,335 metres east 5,510,602 metres north;

Then following the boundary of the park in a northerly direction to where it intersects a lake at UTM 461,750 metres east 5,529,000 metres north;

Then following the south shoreline of the lake in an easterly direction to its most eastern extremity;

Then following a straight line in an easterly direction to UTM 466,087 metres east 5,528,540 metres north;

Then following the southern shore of Parsons Pond River in an easterly direction to the point of commencement.

(i) Northwest Grand Lake Area

All that area of the Island of Newfoundland bounded by a line beginning at the intersection of the Trans Canada Highway, TCH, Route 1 and Camp 33 Road;

Then following Camp 33 Road to the southwest extremity of Grand Lake;

Then following the north shoreline of Grand Lake in a northeasterly direction to the Humber Canal;

Then following the south bank of the Humber Canal to its intersection with the TCH at Deer Lake;

Then following the TCH in a southwesterly direction to the point of commencement.

(j) Terra Nova Area

All that area of the Island of Newfoundland bounded by a line beginning at the intersection of North West River and the Terra Nova National Park, TNNP, boundary at UTM coordinates 706,250 metres east and 5,365,250 metres north;

Then following the north bank of the said river in a westerly direction to UTM coordinates 664,125 metres east and 5,346,625 metres north;

Then following a straight line in a northwesterly direction to UTM coordinates 663,750 metres east and 5,353,125 metres north;

Then following a straight line in a westerly direction to the northeastern extremity of Kepenkeck Lake;

Then following a straight line in a northwesterly direction to the eastern extremity of Newton's Lake;

Then following a straight line in a northerly direction to the eastern extremity of South West Pond;

Then following a straight line in a northeasterly direction to the western extremity of Dead Wolf Pond;

Then following the southern shoreline of Dead Wolf Pond to the mouth of a small stream entering the pond at its eastern extremity;

Then following this stream to its headwaters pond;

Then following a straight line for approximately 500 metres due east to an unnamed pond;

Then following a stream exiting this pond at its southeastern extremity;

Then following this stream in a southeasterly direction to its outflow in Riverhead Brook;

Then following this brook in an easterly direction to its mouth in Gambo Pond;

Then following the north shore of Gambo Pond to Gambo Brook;

Then following the west bank of Gambo Brook to its intersection with the Trans Canada Highway, TCH, Route 1;

Then following the TCH in an easterly direction to its intersection with the TNNP boundary;

Then following the western boundary of TNNP in a southerly direction to the point of commencement.

(k) Charlottetown Enclave Area

All that area of the island of Newfoundland bounded by a line beginning at the intersection of the Terra Nova National Park, TNNP, boundary and the north shoreline of Clode Sound, Bonavista Bay at UTM coordinates 720,554 metres east and 5,367,279 metres north;

Then following the TNNP boundary in a northerly direction to UTM coordinates 720,507 metres east and 5,370,209 metres north;

Then following the TNNP boundary in a northeasterly direction to UTM coordinates 721,554 metres east and 5,371,792 metres north;

Then following the TNNP boundary in a southeasterly direction to its intersection with the north shoreline of Clode Sound, Bonavista Bay at UTM coordinates 722,550 metres east and 5,369,850 metres north;

Then following the shoreline of Clode Sound, Bonavista Bay in a southwesterly direction to the point of commencement.

(l) Red Indian Lake Area

All that area of the Island of Newfoundland bounded by a line beginning at the mouth of Victoria River and Red Indian Lake;

Then following the north bank of Victoria River in a southwesterly direction to Victoria Lake;

Then following a mid-way line between the north and south shorelines of Victoria Lake to the mouth of a small river entering Victoria Lake at its southwestern extremity;

Then following the north bank of the Victoria River to a point opposite the mouth of a brook flowing from Peter Strides Pond;

Then following a straight line in a northerly direction to the intersection of the Pine Marten Study Area and Lloyds River at the mouth of the brook flowing from Cormack Lake;

Then following the Pine Marten Study Area boundary along Lloyds River in a northeasterly direction to the mouth of Otter Pond Brook;

Then following the western bank of Otter Pond Brook, the western shore of Otter Pond and the west bank of Otter Pond Brook to Lake of the Hills;

Then following a straight line in a northwesterly direction to UTM co-ordinates 471,250 metres east and 5,379,000 metres north;

Then following a straight line in a northeasterly direction to its intersection with Clench Brook at UTM co-ordinates 500,875 metres east and 5,401,000 metres north;

Then following the south bank of Clench Brook to its mouth on Red Indian Lake;

Then following a straight line in an easterly direction to the point of commencement.

(m) Little Grand Lake Provisional Ecological Reserve

All those pieces or parcels of land situate and being in the Grand Lake Area in the Electoral Districts of St. George's-Stephenville East, Grand Falls-Buchans, Humber East and Humber West abutted and bounded as follows:

Beginning at a point on the northerly bank of a brook, that point having scaled UTM coordinates of north 5,389,704 metres and east 475,606 metres;

Then running along the northerly bank of the brook in a northwesterly direction to a point where a brook flows from another pond having scaled UTM coordinates of north 5,391,161 metres and east 471,747 metres;

Then running along the northerly shoreline of the pond at low water to a point where a brook flows into the pond having scaled UTM coordinates of north 5,391,994 metres and east 468,930 metres;

Then running in a northwesterly direction to a point having scaled UTM coordinates of north 5,393,183 metres and east 465,520 metres;

Then running in a northwesterly direction to a point having scaled UTM coordinates of north 5,400,550 metres and east 461,818 metres;

Then running in a northwesterly direction to a point having scaled UTM coordinates of north 5,401,539 metres and east 459,751 metres;

Then running in a southwesterly direction to a point on the southerly bank of Red Indian Brook having scaled UTM coordinates of north 5,399,545 metres and east 458,685 metres;

Then running in a southerly direction to a point on the northeasterly shoreline of a pond at low water having scaled UTM coordinates of north 5,393,776 metres and east 458,755 metres;

Then running in a southerly direction to a point on the easterly shoreline of a pond at low water having scaled UTM coordinates of north 5,393,397 metres and east 458,545 metres;

Then running in a southwesterly direction to a point on the northwest corner of a pond at low water having scaled UTM coordinates of north 5,391,346 metres and east 456,746 metres;

Then running along the westerly shoreline of the pond at low water to a point having scaled UTM coordinates of north 5,390,383 metres and east 456,748 metres;

Then running in a southwesterly direction to a point in the southeast corner of a pond at low water having scaled UTM

coordinates of north 5,387,341 metres and east 454,904 metres;

Then running in a southwesterly direction to a point on the northerly shoreline of a pond at low water having scaled UTM coordinates of north 5,385,866 metres and east 454,268;

Then running in a southwesterly direction to a point having scaled UTM coordinates of north 5,385,659 metres and east 453,667 metres;

Then running in a northwesterly direction to a point on the easterly shoreline of a pond at low water having scaled UTM coordinates of north 5,386,696 metres and east 453,239 metres;

Then running in a southwesterly direction to a point on the easterly shoreline of Little Lake at low water having scaled UTM coordinates of north 5,385,557 metres and east 450,243 metres;

Then running along the southerly shoreline of Little Lake at low water to a point on the westerly shoreline having scaled UTM coordinates of north 5,385,020 metres and east 449,247 metres;

Then running in a northwesterly direction to a point on the easterly shoreline of a pond at low water having scaled UTM coordinates of north 5,389,792 metres and east 443,369 metres;

Then running in a westerly direction to a point having scaled UTM coordinates of north 5,389,495 metres and east 442,190 metres;

Then running in a northeasterly direction to a point having scaled UTM coordinates of north 5,390,412 metres and east 442,989 metres;

Then running in a northeasterly direction to a point on the southeasterly shoreline of Grand Lake at low water having

scaled UTM coordinates of north 5,391,958 metres and east 444,342 metres;

Then running in a southwesterly direction along the southeasterly shoreline of Grand Lake at low water and along the mouth of Lewaseechjeech Brook to a point on the westerly bank of the Lewaseechjeech Brook having scaled UTM coordinates of north 5,386,804 metres and east 430,235 metres;

Then running along the westerly bank of Lewaseechjeech Brook at low water in a southerly direction to a point on the westerly bank of a brook flowing into the Lewaseechjeech Brook having scaled UTM coordinates of north 5,385,643 metres and east 429,908 metres;

Then running along the westerly bank of the brook and along the westerly shoreline of a pond at low water in a southerly direction to a point on the southerly shoreline of the pond having scaled UTM coordinates of north 5,383,359 metres and east 429,072 metres;

Then running in a southerly direction to a point on the northerly shoreline of another pond at low water having scaled UTM coordinates of north 5,382,971 metres and east 428,980 metres;

Then running along the westerly shoreline of the pond at low water and along the westerly bank of a brook in a southerly direction to a point on the westerly shoreline of a small pond having scaled UTM coordinates of north 5,379,559 metres and east 428,242 metres;

Then running in a southeasterly direction to a point on the northwest corner of the shoreline at low water of a pond contained in Bottom Brook having scaled UTM coordinates of north 5,377,444 metres and east 428,570 metres;

Then running along the westerly shoreline at low water of the pond in a southerly direction to a point on the southwest corner having scaled UTM coordinates of north 5,377,244 metres and east 428,647 metres;

Then running in a southeasterly direction to a point on the northerly shoreline of a pond at low water where a brook flows into the pond having scaled UTM coordinates of north 5,375,629 metres and east 429,663 metres;

Then running in a northerly direction to a point on the southerly bank of Bottom Brook having scaled UTM coordinates of north 5,377,651 metres and east 429,375 metres;

Then running along the southerly bank of Bottom Brook in a northeasterly direction to a point on the western shoreline of a pond at low water having scaled UTM coordinates of north 5,378,006 metres and east 429,789 metres;

Then running in a southeasterly direction to a point on the westerly shoreline of Island Pond at low water having scaled UTM coordinates of north 5,376,000 metres and east 434,641 metres;

Then running along the westerly shoreline of Island Pond at low water in a southeasterly direction to a point having scaled UTM coordinates of north 5,374,939 metres and east 435,872 metres;

Then running in a southeasterly direction to a point on the southerly shoreline of Island Pond at low water having scaled UTM coordinates of north 5,374,236 metres and east 437,560 metres;

Then running along the southerly shoreline of Island Pond at low water to a point having scaled UTM coordinates of north 5,374,019 metres and east 438,975 metres;

Then running in a southeasterly direction to a point on the southerly shoreline of a pond at low water having scaled UTM coordinates of north 5,373,738 metres and east 441,754 metres;

Then running in a southeasterly direction to a point on the westerly shoreline of a pond at low water having scaled UTM coordinates of north 5,373,680 metres and east 443,916 metres;

Then running along the northerly shoreline of the pond to a point having scaled UTM coordinates of north 5,373,688 metres and east 444,159 metres;

Then running in a northeasterly direction to a point on the westerly shoreline of a pond at low water having scaled coordinates of north 5,374,221 metres and east 447,675 metres;

Then running along the northerly shoreline of the pond at low water to a point on the easterly shoreline having scaled UTM coordinates of north 5,374,053 metres and east 448,399 metres;

Then running in a southeasterly direction to a point on the easterly shoreline of a pond at low water having scaled UTM coordinates of north 5,373,326 metres and east 452,037 metres;

Then running in a southeasterly direction to a point on the southerly bank of a brook flowing into Little Grand Lake having scaled UTM coordinates of north 5,373,018 metres and east 458,454 metres;

Then running along the southerly bank of the brook and along the southeasterly shoreline of a pond at low water in a northeasterly direction to a point having scaled UTM coordinates north 5,374,178 metres and east 464,746 metres;

Then running in a northeasterly direction to a point on a hill-top having scaled UTM coordinates of north 5,380,135 metres and east 470,561 metres;

Then running in a northeasterly direction to the point of beginning;

The above described piece or parcel of land containing an area of 692.97 kilometres squared, more or less;

Also, all that other piece or parcel of land containing an area of 1.67 kilometres squared, more or less; abutted and bounded as follows:

Beginning at a point on the westerly bank of the Lewaseechjeech Brook at low water, the point having scaled UTM coordinates of north 5,386,804 metres and east 430,235 metres;

Then running along the westerly bank of Lewaseechjeech Brook and along the southwesterly shoreline of Grand Lake at low water in a northwesterly direction to a point on the southerly shoreline having scaled UTM coordinates of north 5,389,218 metres and east 427,412 metres;

Then running in a southeasterly direction to a point on the northerly shoreline of a pond at low water having scaled UTM coordinates of north 5,388,300 metres and east 428,197 metres;

Then running along the northerly shoreline of the pond at low water in a southeasterly direction to a point on the southerly shoreline of the pond where a brook flows from the pond having scaled UTM coordinates of north 5,388,234 metres and east 428,300 metres;

Then running in a northeasterly direction to a point on a hill having scaled UTM coordinates of north 5,388,465 metres and east 429,523 metres;

Then running in a southeasterly direction to the point of beginning;

Also, all that other piece or parcel of land containing an area of 34.46 kilometres squared, more or less, abutted and bounded as follows:

Beginning at a point in the northwesterly shoreline of Grand Lake at low water, the point being located west of Sandy Point on the east bank of a brook flowing into Grand Lake and having scaled UTM coordinates of north 5,391,015 metres and east 427,053 metres;

Then running in a northeasterly direction to a point having scaled UTM coordinates of north 5,391,686 metres and east 428,921 metres;

Then running in a northeasterly direction to a point located on the top of a hill and having scaled UTM coordinates of north 5,392,323 metres and east 429,476 metres;

Then running in southeasterly direction to a point having scaled UTM coordinates of north 5,391,432 metres and east 429,759 metres;

Then running in a southeasterly direction to a point having scaled UTM coordinates of north 5,391,495 metres and east 430,805 metres;

Then running in a northeasterly direction to a point in the centre of a brook flowing into Grand Lake having scaled UTM coordinates of north 5,393,643 metres and east 433,459 metres;

Then running in a northeasterly direction to a point in the centre of a brook flowing into Grand Lake having scaled UTM coordinates of north 5,397,098 metres and east 437,193 metres;

Then running in a northeasterly direction to a point in the centre of a brook flowing into Grand Lake having scaled UTM coordinates of north 5,399,507 metres and east 439,105 metres;

Then running in a northeasterly direction to a point having scaled UTM coordinates of north 5,401,328 metres and east 440,774 metres;

Then running in a northerly direction to a point on a hill having scaled UTM coordinates of north 5,401,885 metres and east 440,743 metres;

Then running in a northeasterly direction to a point in the centre of a brook having scaled UTM coordinates of north 5,402,675 metres and east 441,768 metres;

Then running in a northeasterly direction to a point in the centre of a brook having scaled UTM coordinates of north 5,404,217 metres and east 442,789 metres;

Then running in a northeasterly direction to a point on the southwesterly shoreline of a pond at low water having scaled UTM coordinates of north 5,406,758 metres and east 443,055 metres;

Then running along the southerly shoreline of the pond, along the southerly bank of a brook flowing into the pond, and along the southerly shoreline of another pond at low water to a point at the northern end of the pond having scaled UTM coordinates of north 5,409,299 metres and east 444,989 metres;

Then running in a northeasterly direction to a point on the southerly shoreline of a pond at low water having scaled UTM coordinates of north 5,410,781 metres and east 446,292 metres;

Then running along the southerly shoreline of the pond in a northeasterly direction to a point on the easterly shoreline of the pond having scaled UTM coordinates of north 5,411,049 metres and east 446,880 metres;

Then running in an easterly direction to a point on a hill having scaled UTM coordinates of north 5,411,266 metres and east 448,884 metres;

Then running in a northeasterly direction to a point having scaled UTM coordinates of north 5,413,070 metres and east 450,727 metres;

Then running in a northeasterly direction to a point on a hill having scaled UTM coordinates of north 5,415,357 metres and east 451,840 metres;

Then running in a northwesterly direction to a point on the westerly bank of a brook flowing into the Grand Lake having scaled UTM coordinates of north 5,416,303 metres and east 451,029 metres;

Then running along the westerly bank of the brook in a southerly direction to a point on the northerly shoreline of north Northern Harbour, Grand Lake, at low water having

scaled UTM coordinates of north 5,415,033 metres and east 452,861 metres;

Then running along the northerly shoreline of Grand Lake at low water in a southwesterly direction to the point of beginning;

Also, all that other piece or parcel of land containing an area of 2.05 kilometres squared abutted and bounded as follows:

Beginning at a point in the northwesterly shoreline of Grand Lake at low water, at the eastern bank of the mouth of a brook flowing into Northern Harbour, the point having scaled UTM coordinates of north 5,416,118 metres and east 453,821 metres;

Then running in a northeasterly direction, perpendicular to the shoreline, to a point having scaled UTM coordinates of north 5,416,284 metres and east 453,857 metres;

Then running in general southerly and northeasterly directions, parallel to and perpendicularly distant 200 meters from the low water mark of Grand Lake, to a point on the westerly bank of Porters Brook having scaled UTM coordinates of north 5,419,213 and east 459,778 metres;

Then running along the low water mark of the westerly bank of Porters Brook to a point where the brook flows into Bucket Cove, Grand Lake, having scaled UTM coordinates of north 5,419,008 metres and east 459,797 metres;

Then running along the northwesterly shoreline of Grand Lake at low water in southwesterly and northeasterly directions to the point of beginning;

The above described piece or parcel of land being subject to a Newfoundland and Labrador Hydro Line Easement, 152.4 meters wide, extending through the parcel;

Reserving nevertheless, out of the above described pieces or parcels of land all roads and adjacent rights of way crossing the parcels;

The above described pieces or parcels of land containing in all an area of 731.15 kilometres squared, more or less.

All bearings being referred to zone 21 of the Universal Transverse Mercator Projection, NAD83.

(n) The Little Grand Lake Wild Life Reserve

All those pieces or parcels of land situate and being south of Grand Lake in the Electoral Districts of St. George's-Stephenville East, Grand Falls-Buchans, and Burgeo and LaPoile abutted and bounded as follows:

Beginning at a point in the southeasterly shoreline of Grand Lake at the low water mark, the point having scaled UTM coordinates of north 5,414,968 metres and east 463,731 metres;

Then running in a southeasterly direction to a point on the westerly bank of a river, the point having scaled UTM coordinates of north 5,393,331 metres and east 477,337 metres;

Then running in a southwesterly direction to a point on the northerly bank of brook, the point having scaled UTM coordinates of north 5,389,704 metres and east 475,606 metres;

Then running along the northerly bank of the brook in a northwesterly direction to a point where the brook flows from a pond having scaled UTM coordinates of north 5,391,161 metres and east 471,747 metres;

Then running along the northerly shoreline of the pond at low water to a point where a brook flows into the pond having scaled UTM coordinates of north 5,391,994 metres and east 468,930 metres;

Then running in a northwesterly direction to a point having scaled UTM coordinates of north 5,393,183 metres and east 465,520 metres;

Then running in a northwesterly direction to a point having scaled UTM coordinates of north 5,400,550 metres and east 461,818 metres;

Then running in a northwesterly direction to a point having scaled UTM coordinates of north 5,401,539 metres and east 459,751 metres;

Then running in a southwesterly direction to a point on the northerly bank of Red Indian Brook having scaled UTM coordinates of north 5,399,545 metres and east 458,685 metres;

Then running in a southerly direction to a point on the northeasterly shoreline of a pond at low water having scaled UTM coordinates of north 5,393,776 metres and east 458,755 metres;

Then running along the easterly shoreline of the pond at low water to a point on the southern shoreline having scaled UTM coordinates of north 5,393,397 metres and east 458,545 metres;

Then running in a southwesterly direction to a point on the northwest corner of a pond at low water having scaled UTM coordinates of north 5,391,346 metres and east 456,746 metres;

Then running along the westerly shoreline of the pond at low water to a point having scaled UTM coordinates of north 5,390,383 metres and east 456,748 metres;

Then running in a southwesterly direction to a point in the southeast corner of a pond at low water having scaled UTM coordinates of north 5,387,341 metres and east 454,904 metres;

Then running in a southwesterly direction to a point on the northerly shoreline of a pond at low water having scaled UTM coordinates of north 5,385,866 metres and east 454,268 metres;

Then running in a southwesterly direction to a point having scaled UTM coordinates of north 5,385,659 metres and east 453,667 metres;

Then running in a northwesterly direction to a point on the easterly shoreline of a pond at low water having scaled UTM coordinates of north 5,386,696 metres and east 453,239 metres;

Then running in a southwesterly direction to a point on the easterly shoreline of Little Lake at low water having scaled UTM coordinates of north 5,385,557 metres and east 450,243 metres;

Then running along the southerly shoreline of Little Lake at low water to a point on the westerly shoreline having scaled UTM coordinates of north 5,385,020 metres and east 449,247 metres;

Then running in a northwesterly direction to a point on the easterly shoreline of a pond at low water having scaled UTM coordinates of north 5,389,792 and east 443,369 metres;

Then running in a westerly direction to a point having scaled UTM coordinates of north 5,389,495 metres and east 442,190 metres;

Then running in a northeasterly direction to a point having scaled UTM coordinates of north 5,390,412 metres and east 442,989 metres;

Then running in a northeasterly direction to a point on the southeasterly shoreline of Grand Lake at low water having scaled UTM coordinates north 5,391,958 metres and east 444,342 metres;

Then running along the southeasterly shoreline of Grand Lake at low water mark to the point of beginning;

The above described piece or parcel of land being subject to a Newfoundland Hydro Line Easement, 152.4 metres wide, extending through the land;

And containing an area of 391.44 kilometres squared, more or less;

Also, all that other piece or parcel of land containing an area of 172.26 kilometres squared, more or less; abutted and bounded as follows:

Beginning at a point in the southeasterly shoreline of a pond at low water, the point having scaled UTM coordinates of north 5,374,178 metres and east 464,746 metres;

Then running in a southwesterly direction to a point on the southerly shoreline of Padille Pond at low water, the point having scaled UTM coordinates of north 5,369,364 metres and east 458,323 metres;

Then running in a northeasterly direction along the westerly shoreline of Padille Pond to a point on the shoreline at low water having scaled UTM coordinates of north 5,371,058 metres and east 459,214 metres;

Then running in a northwesterly direction to a point on the southerly shoreline of a pond at low water having scaled UTM coordinates of north 5,371,300 metres and east 458,353 metres;

Then running in a southwesterly direction to a point near the eastern shoreline of Bottle Lake having scaled UTM coordinates of north 5,370,708 and east 456,118 metres;

Then running in a southwesterly direction to a point on the northerly shoreline of Puddle Pond at low water having scaled UTM coordinates of north 5,369,402 metres and east 455,632 metres;

Then running along the northerly shoreline of Puddle Pond to a point having scaled UTM coordinates of north 5,369,249 metres and east 457,983 metres;

Then running in a southwesterly direction to a point on the northerly limit of the Newfoundland and Labrador Hydro Transmission line easement, 30 metres wide, having scaled

UTM coordinates of north 5,365,128 metres and east 452,633 metres;

Then running along the northerly limit of the transmission line easement in a northwesterly direction to a point on the northerly bank of Southwest Brook at low water having scaled UTM coordinates of north 5,367,004 metres and east 443,702 metres;

Then running along the northerly bank of Southwest Brook at low water in a northwesterly direction to a point where a brook flows into Southwest Brook having scaled UTM coordinates of north 5,368,321 metres and east 441,104 metres;

Then running along the easterly bank of the brook at low water in a northerly direction to a point on the southwesterly shoreline of a pond at low water having scaled UTM coordinates of north 5,368,721 metres and east 441,363 metres;

Then running along the westerly shoreline of the pond at low water to a point on the northerly bank of a brook flowing into the pond having scaled UTM coordinates of north 5,368,804 metres and east 441,312 metres;

Then following the northerly bank of the brook in a northwesterly direction to a point on the southerly shoreline of a pond at low water having scaled UTM coordinates of north 5,370,103 metres and east 440,488 metres;

Then running along the southerly shoreline of the pond in a westerly direction at low water to a point having scaled UTM coordinates of north 5,370,113 metres and east 440,319 metres;

Then running in a westerly direction to a point on the southerly shoreline of a pond at low water having scaled UTM coordinates of north 5,370,006 metres and east 437,505 metres;

Then running along the northerly bank of a brook flowing from the pond to a point where the brook meets another brook and both brooks converge and flow into Southwest

Brook having scaled UTM coordinates of north 5,368,550 metres and east 435,535 metres;

Then following the northerly bank of the converging brook at low water in a general northwesterly direction to a point having scaled UTM coordinates of north 5,369,891 metres and east 434,472 metres;

Then running in a northwesterly direction to a point having southerly shoreline of North Lake at low water having scaled UTM coordinates of north 5,371,193 metres and east 433,389 metres;

Then running along the westerly shoreline of North Lake at low water in a northwesterly direction to a point at the northwest corner of North Lake having scaled UTM coordinates of north 5,374,841 metres and east 432,517 metres;

Then running in a northwesterly direction to a point in the southerly shoreline of a pond at low water having scaled UTM coordinates of north 5,375,300 metres and east 432,269 metres;

Then following the northerly bank of a brook flowing from the southerly shoreline of the pond at low water in a westerly direction to the point where the brook flows into the easterly shoreline of another pond having scaled UTM coordinates of north 5,375,545 metres and east 430,361 metres;

Then running along the northerly shoreline of the pond at low water to a point where a brook flows into the pond having scaled UTM coordinates of north 5,375,629 metres and east 429,663 metres;

Then running in a northerly direction to a point on the southerly bank of Bottom Brook having scaled UTM coordinates of north 5,377,651 metres and east 429,375 metres;

Then running along the southerly bank of Bottom Brook in a northeasterly direction to a point on the westerly shoreline of a pond at low water having scaled UTM coordinates of north 5,378,006 metres and east 429,789 metres;

Then running in a southeasterly direction to a point on the westerly shoreline of Island Pond at low water having scaled UTM coordinates of north 5,376,000 metres and east 434,641 metres;

Then running along the westerly shoreline of Island Pond at low water in a southeasterly direction to a point having scaled UTM coordinates of north 5,374,939 metres and east 435,872 metres;

Then running in a southeasterly direction to a point on the southerly shoreline of Island Pond at low water having scaled UTM coordinates of north 5,374,236 metres and east 437,560 metres;

Then running along the southerly shoreline of Island Pond at low water to a point having scaled UTM coordinates of north 5,374,019 metres and east 438,975 metres;

Then running in a southeasterly direction to a point on the southerly shoreline of a pond at low water having scaled UTM coordinates of north 5,373,738 metres and east 441,754 metres;

Then running in a southeasterly direction to a point of the westerly shoreline of a pond at low water having scaled UTM coordinates of north 5,373,680 metres and east 443,916 metres;

Then running along the northerly shoreline of the pond at low water to a point on the easterly shoreline having scaled UTM coordinates of north 5,373,688 metres and east 444,159 metres;

Then running in a northeasterly direction to a point on the westerly shoreline of a pond at low water having scaled UTM coordinates of north 5,374,221 metres and east 447,675 metres;

Then running along the northerly shoreline of the pond at low water to a point on the easterly shoreline having scaled UTM coordinates of north 5,374,053 metres and east 448,399 metres;

Then running in a southeasterly direction to a point on the easterly shoreline of a pond at low water having scaled UTM coordinates of north 5,373,326 and east 452,037 metres;

Then running in a southeasterly direction to a point on the southerly bank of a brook flowing into Little Grand Lake having scaled UTM coordinates of north 5,373,018 metres and east 458,454 metres;

Then running along the southerly bank of the brook and along the southerly shoreline of a pond at low water in a northeasterly direction to the point of beginning;

Also all that other piece or parcel of land containing an area of 5.10 kilometres squared, more or less, abutted and bounded as follows:

Beginning at a point on the southerly shoreline of Padille Pond at low water, the point having scaled UTM coordinates of north 5,369,364 metres and east 458,323 metres;

Then running in a northeasterly direction along the westerly shoreline of the Padille Pond to a point on the shoreline at low water having scaled UTM coordinates of north 5,371,058 metres and east 459,214 metres;

Then running in a northwesterly direction to a point on the southerly shoreline of a pond at low water having scaled UTM coordinates of north 5,371,300 and east 458,353 metres;

Then running in a southwesterly direction to a point near the eastern shoreline of Bottle Lake having scaled UTM coordinates of north 5,370,708 and east 456,118 metres;

Then running in a southwesterly direction to a point on the northerly shoreline of Puddle Pond at low water having scaled UTM coordinates of north 5,369,402 metres and east 455,632 metres;

Then running along the northerly shoreline of Puddle Pond at low water to a point having scaled UTM coordinates of north 5,369,249 metres and east 457,983 metres;

Then running in a northeasterly direction to the point of beginning;

Reserving nevertheless out of the above described pieces or parcels of land all roads and adjacent rights of way crossing the parcels;

The above described pieces or parcels of land containing in all an area of 568.80 kilometres squared, more or less;

All bearings being referred to zone 21 of the Universal Transverse Mercator Projection, NAD83.

©Earl G. Tucker, Queen's Printer



**NEWFOUNDLAND AND LABRADOR
REGULATION 103/09**

*Proclamation bringing various provisions
of the Act into force*

under the

Personal Health Information Act

(O.C. 2009-162)

(Filed November 18, 2009)

*ELIZABETH THE SECOND, by the Grace of God of the
United Kingdom, Canada and Her Other Realms and Territories
QUEEN, Head of the Commonwealth, Defender of the Faith.*

JOHN C. CROSBIE
Lieutenant Governor

FELIX COLLINS
Attorney General

TO ALL TO WHOM THESE PRESENTS SHALL COME,

GREETING;

A PROCLAMATION

WHEREAS in and by section 97 of *An Act to Provide for the Protection of Personal Health Information*, SNL 2008 cP-7.01 (the “Act”) it is provided that the Act or one or more sections of the Act shall come into force on a date or dates to be fixed by Proclamation of Our Lieutenant Governor in Council;

AND WHEREAS it is deemed expedient that certain sections of the Act shall now come into force.

NOW KNOW YE, THAT WE, by and with the advice of Our Executive Council of Our Province of Newfoundland and Labrador, do by this our Proclamation declare and direct that:

Sections 2(1)(a), 2(1)(b), 2(1)(c), 2(1)(d), 2(1)(f), 2(1)(g), 2(1)(h), 2(1)(j)(ix), (xii), (xv), 2(1)(p), 2(1)(q), 2(1)(s), 2(1)(aa), 4(1)(a), 4(1)(e), 4(1)(g)(ii), 4(1)(i), 5, 8(1) and (2), 11(1) and (3), 39(4)(c)(iii), 41(1)(a) and (b), 87, 90(1)(i), 90(1)(k), 90(1)(r), 90(2)(a-d), 93(1), 93(2), 93(3), and 93(4) of “An Act to Provide for the Protection of

Personal Health Information,” SNL 2008 cP-7.01 shall come into force on the date of publication of this proclamation in *The Newfoundland and Labrador Gazette*.

OF ALL WHICH OUR LOVING SUBJECTS AND ALL OTHERS whom these Presents may concern are hereby required to take notice and to govern themselves accordingly.

IN TESTIMONY WHEREOF WE have caused these Our Letters to be made Patent and the Great Seal of Newfoundland and Labrador to be hereunto affixed.

WITNESS: Our trusty and well-beloved the Honourable John Carnell Crosbie, Member of the Privy Council of Canada, Officer of the Order of Canada, Chancellor of the Order of Newfoundland and Labrador, and one of Her Majesty’s Counsel learned in the law, Lieutenant Governor in and for Our Province of Newfoundland and Labrador.

AT OUR GOVERNMENT HOUSE in Our City of St. John's
this 19th day of November
in the year of Our Lord two thousand and nine
in the fifty-eighth year of Our Reign.

BY COMMAND,

TOM HEDDERSON
Registrar General



NEWFOUNDLAND AND LABRADOR REGULATION 104/09

Pharmacy Network Regulations
under the
Personal Health Information Act
(O.C. 2009-163)

(Filed November 19, 2009)

Under the authority of paragraphs 90(1)(i) and (k) of the *Personal Health Information Act*, the Lieutenant-Governor in Council makes the following regulations.

Dated at St. John's, May 14, 2009.

Gary Norris
Clerk of the Executive Council

REGULATIONS

Analysis

- | | |
|----------------|--------------------------------|
| 1. Short title | 3. Designation of network |
| 2. Definitions | 4. Information to be disclosed |

Short title

1. These regulations may be cited as the *Pharmacy Network Regulations*.

Definitions

2. In these regulations

(a) "Act" means the *Personal Health Information Act*; and

(b) "Centre for Health Information" means the centre established under the *Centre for Health Information Act*.

Designation of
network

3. The Pharmacy Network operated by the Centre for Health Information is designated as an information network for the purpose of paragraph 39(4)(c) of the Act.

Information to be
disclosed

4. The information that may be disclosed via the pharmacy network shall be as determined by the Centre for Health Information, with the advice of a committee including representatives of the government, the Newfoundland and Labrador Pharmacy Board, the College of Physicians and Surgeons of Newfoundland and Labrador and the Association of Registered Nurses of Newfoundland and Labrador, where the centre decides to establish one.

©Earl G. Tucker, Queen's Printer

Index

PART I

Mineral Act– Notice	459
Quieting of Titles Act– Notice.....	460
Trustee Act – Notices	462
Urban and Rural Planning Act– Notice	459

PART II

CONTINUING INDEX OF SUBORDINATE LEGISLATION

Title of Act and Subordinate Legislation made thereunder	CNLR or NL Reg.	Amendment	NL Gazette Date & Page No.
Personal Health Information Act			
Pharmacy Network Regulations	NLR 104/09	New	Nov 20/09, p. 919
Proclamation bringing various provisions of the Act into force	NLR 103/09	New	Nov 20/09, p. 917
Wild Life Act and the Wild Life Regulations			
Coyote Hunting Order Newfoundland and Labrador, 2009-2010	NLR 100/09	R&S NLR 66/08	Nov 20/09, p. 855
Furbearing Animals Trapping and Shooting Order, 2009-2010	NLR 101/09	R&S NLR 76/08	Nov 20/09, p. 857
Open Season Big Game Black Bear Hunting and Snaring Order, Labrador, 2009-2010	NLR 97/09	R&S NLR 60/08	Nov 20/09, p. 809
Open Season Fall Big Game Black Bear Hunting and Snaring Order, Newfoundland, 2009	NLR 96/09	R&S NLR 59/08	Nov 20/09, p. 805
Open Season Big Game Caribou Hunting Order, Labrador, 2009-2010	NLR 99/09	R&S NLR 62/08	Nov 20/09, p. 833
Open Season Big Game Caribou Hunting Order, Newfoundland, 2009-2010	NLR 98/09	R&S NLR 61/08	Nov 20/09, p. 815
Open Season Small Game Hunting and Snaring Order, 2009-2010	NLR 102/09	R&S NLR 65/08	Nov 20/09, p. 881
Open Season Big Game Moose Hunting Order, Labrador, 2009-2010	NLR 95/09	R&S NLR 64/08	Nov 20/09, p. 791
Open Season Big Game Moose Hunting Order, Newfoundland, 2009-2010	NLR 94/09	R&S NLR 63/08	Nov 20/09, p. 739

The Newfoundland and Labrador Gazette is published from the office of Earl G. Tucker, Queen's Printer.

Copy for publication must be received before **Friday, 4:30 p.m.**, seven days before publication, to ensure inclusion in next issue.

Advertisements should be typewritten or printed legibly, separate from covering letter. Number of insertions required must be stated and the names of all signing officers typewritten or printed.

Copy may be mailed to the address below, faxed to (709) 729-1900 or emailed to queensprinter@gov.nl.ca.

Advertising rates are available upon request. Subscription rate for *The Newfoundland and Labrador Gazette* is \$125.00 for 52 weeks plus applicable tax (\$131.25). Weekly issues of \$3.00 per copy, plus tax payable in advance.

All cheques, money orders, etc., should be made payable to THE NEWFOUNDLAND EXCHEQUER ACCOUNT and all correspondence should be addressed to: Office of the Queen's Printer, P. O. Box 8700, Ground Floor, East Block, Confederation Building, St. John's, NL A1B 4J6. Telephone (709) 729-3649. Fax: (709) 729-1900.

Web Site: <http://www.gs.gov.nl.ca/gs/oqp>

Place your order by contacting:
Office of The Queen's Printer
Confederation Building, East Block
St. John's, NL A1B 4J6
Telephone: (709) 729-3649 Fax: (709) 729-1900
email: queensprinter@gov.nl.ca

Government Information Product
Publication Rate Mail

G.S.T. # R107442683

All requests for Subscription and Legislation MUST be prepaid.