



# THE NEWFOUNDLAND AND LABRADOR GAZETTE

## PART I

PUBLISHED BY AUTHORITY

Vol. 85

ST. JOHN'S, FRIDAY, MARCH 12, 2010

No. 10

**CITY OF ST. JOHN'S ACT**

Dated this 3<sup>rd</sup> day of March, 2010.



### ST. JOHN'S MUNICIPAL COUNCIL NOTICE ST. JOHN'S MOBILE SIGN BY-LAW

TAKE NOTICE that the St. John's Municipal Council has enacted the St. John's Mobile Sign (Amendment No. 1 – 2010) By-Law.

The said By-Law was passed by Council on the 1<sup>st</sup> day of March, 2010 so as to address the placement of mobile signs in heritage areas.

All persons are hereby required to take notice that any person who wishes to view such By-Law may view same at the Office of the City Solicitor of the St. John's Municipal Council at City Hall, and that any person who wishes to obtain a copy thereof may obtain it at the said office upon the payment of a reasonable charge as established by the St. John's Municipal Council for such copy.

CITY OF ST. JOHN'S  
Neil Martin - City Clerk

P.O. #35743

Mar 12

### MINERAL ACT

#### NOTICE

Published in accordance with section 62 of CNLR 1143/96 under the *Mineral Act*, cM-12, RSNL 1990 as amended.

Mineral rights to the following mineral licenses have reverted to the Crown:

Mineral License	000932M
Held by	Kernow Resources & Development Ltd.
Situate near	Sachem
On map sheet	14C/12
Note	– no claims coming open. Will become part of the Nain EML

A portion of license	016221M
Held by	Altius Resources Inc.
Situate near	Birchy Hill Brook, Central NL
On map sheet	12H/06
	more particularly described in an application on file at Department of Natural Resources

THE NEWFOUNDLAND AND LABRADOR GAZETTE  
March 12, 2010

A portion of license 015172M  
Held by Paragon Minerals Corporation  
Situates near Exploits River, Central NL  
On map sheet 02D/13 12A/16  
more particularly described in an application on file at Department of Natural Resources

A portion of license 015171M  
Held by Paragon Minerals Corporation  
Situates near Exploits River, Central NL  
On map sheet 12A/16  
more particularly described in an application on file at Department of Natural Resources

A portion of license 012462M  
Held by Crosshair Exploration & Mining Corp.  
Situates near Noel Pauls Brook, Central NL  
On map sheet 12A/09 12A/16  
more particularly described in an application on file at Department of Natural Resources

Mineral License 013381M  
Held by Froude, Herb M.  
Situates near Bloomfield, Eastern NL  
On map sheet 02C/05

Mineral License 011407M  
Held by Paragon Minerals Corporation  
Situates near Gander River, Central NL  
On map sheet 02E/02

Mineral License 012712M  
Held by Spruce Ridge Resources Ltd  
Situates near Canoe Pond, Central NL  
On map sheet 12H/06

Mineral License 012714M  
Held by Spruce Ridge Resources Ltd  
Situates near Crooked Feeder, Central NL  
On map sheet 12H/06

Mineral License 012737M  
Held by Spruce Ridge Resources Ltd  
Situates near Deer Lake, Western NL  
On map sheet 12H/03 12H/06

Mineral License 012738M  
Held by Spruce Ridge Resources Ltd  
Situates near Adies Pond, Wes, Central NL  
On map sheet 12H/06

Mineral License 012739M  
Held by Spruce Ridge Resources Ltd  
Situates near Deer Lake, Western NL  
On map sheet 12H/06

Mineral License 012740M  
Held by Spruce Ridge Resources Ltd  
Situates near Deer Lake, Western NL  
On map sheet 12H/03 12H/06

Mineral License 012741M  
Held by Spruce Ridge Resources Ltd  
Situates near Deer Lake, Western NL  
On map sheet 12H/03 12H/06

Mineral License 012742M  
Held by Spruce Ridge Resources Ltd  
Situates near Deer Lake, Western NL  
On map sheet 12H/03 12H/06

Mineral License 012747M  
Held by Ucore Uranium Inc.  
Situates near Makkovik River  
On map sheet 13J/11

Mineral License 015674M  
Held by Cornerstone Resources Inc.  
Situates near Anaktalik Brook  
On map sheet 14D/09

Mineral License 012766M  
Held by Benton Resources Corp.  
Situates near Kogaluk River  
On map sheet 14C/04

Mineral License 012767M  
Held by Budden, Andy  
Situates near Makkovik River  
On map sheet 13J/11

Mineral License 012771M  
Held by Silver Spruce Resources Inc.  
Situates near Makkovik River  
On map sheet 13J/14

Mineral License 012775M  
Held by Bayswater Ventures Corp.  
Situates near Makkovik River  
On map sheet 13J/11 13J/14

Mineral License 012777M  
Held by Bayswater Uranium Corp.  
Situates near Makkovik River  
On map sheet 13J/14

Mineral License 012780M  
Held by Bayswater Uranium Corp.  
Situates near Makkovik River  
On map sheet 13J/14

Mineral License 012803M  
Held by Ucore Uranium Inc.  
Situates near Makkovik River  
On map sheet 13J/14

Mineral License 012808M  
Held by Ucore Uranium Inc.  
Situates near Makkovik River  
On map sheet 13J/11

Mineral License 012829M  
Held by Ucore Uranium Inc.  
Situates near Makkovik River  
On map sheet 13J/11 13J/14

Mineral License 012837M  
Held by Mega Uranium Ltd.  
Situates near Kaipokok Bay  
On map sheet 13J/13

Mineral License 012849M  
Held by Spruce Ridge Resources Ltd  
Situates near Sawmill Pond, Central NL  
On map sheet 12H/07 12H/06

Mineral License 013047M  
Held by Capella Resources Ltd.  
Situates near Port Hope Simpson  
On map sheet 13A/09

THE NEWFOUNDLAND AND LABRADOR GAZETTE  
March 12, 2010

Mineral License Held by Situates near On map sheet	014151M Ryan, Kevin Northern Arm Brook, Central NL 02E/04	Mineral License Held by Situates near On map sheet	014268M Altius Resources Inc. Robinsons River, Western NL 12B/02 12B/07
Mineral License Held by Situates near On map sheet	014164M Alterra Resources Inc. Tasisuak Lake 14D/10 14D/09	Mineral License Held by Situates near On map sheet	014269M Altius Resources Inc. Crabbes River, Western NL 12B/02
Mineral License Held by Situates near On map sheet	014165M Alterra Resources Inc. Tasisuak Lake 14D/10	Mineral License Held by Situates near On map sheet	014270M Altius Resources Inc. Highlands River, Western NL 12B/02
Mineral License Held by Situates near On map sheet	014168M Alterra Resources Inc. Tasisuak Lake 14D/10	Mineral License Held by Situates near On map sheet	014289M Metals Creek Resources Corp. Micmac Lake, Baie Verte Peninsula 12H/09 12H/10
Mineral License Held by Situates near On map sheet	014172M Alterra Resources Inc. Tasisuak Lake 14D/10	Mineral License Held by Situates near On map sheet	014317M Noel, E. Michele Aspen Pond, Central NL 02D/13
Mineral License Held by Situates near On map sheet	014177M Keats, Allan E. T. Quinn Lake, Central NL 12A/07 12A/10	Mineral License Held by Situates near On map sheet	014341M Mesher, Ivan Spread Eagle, Avalon Peninsula 01N/12
Mineral License Held by Situates near On map sheet	014183M Hicks, Darrin Northeast Adies River, Western NL 12H/11	A portion of license Held by Situates near On map sheet more particularly described in an application on file at Department of Natural Resources	014410M Hicks, Darrin Pipestone Pond, Central NL 12A/08
Mineral License Held by Situates near On map sheet	014211M Alterra Resources Inc. Tasisuak Lake 14D/10	Mineral License Held by Situates near On map sheet	014694M Altius Resources Inc. Stephenville Crossing, Western NL 12B/08 12B/09
Mineral License Held by Situates near On map sheet	014214M Celtic Minerals Ltd Tasisuak Lake 14D/11 14D/10	Mineral License Held by Situates near On map sheet	015568M Metals Creek Resources Corp. Cabot Lake 14D/02 14D/01
Mineral License Held by Situates near On map sheet	014221M Alterra Resources Inc. Tasialuk Lake 14D/10	Mineral License Held by Situates near On map sheet	015575M King, David Bay Du Nord River, Southern NL 02D/03
Mineral License Held by Situates near On map sheet	014256M Penney, Brian Gilbert Lake 13A/09 13A/16	Mineral License Held by Situates near On map sheet	015576M Turpin, Alexander J. Conne River Area, Southern NL 01M/13
Mineral License Held by Situates near On map sheet	014262M Altius Resources Inc. Flat Bay, Western NL 12B/08 12B/07	Mineral License Held by Situates near On map sheet	015577M Lannon, Rosalind Nugget Pond, Baie Verte Peninsula 02E/13
Mineral License Held by Situates near On map sheet	014267M Altius Resources Inc. Fischells Area, Western NL 12B/07	Mineral License Held by Situates near On map sheet	015578M Reid, Patricia E. Gander Bay, Central NL 02E/08 02E/07
Mineral License Held by Situates near On map sheet	014266M Altius Resources Inc. Robinsons River, Western NL 12B/02	Mineral License Held by	015587M Stone, Albert

Situate near Grand Beach, Burin Peninsula  
On map sheet 01M/03

Mineral License 015588M  
Held by White, Derek R.  
Situate near Fox Pond, Western NL  
On map sheet 12B/08

The lands covered by this notice except for the lands within Exempt Mineral Lands, the Exempt Mineral Lands being described in CNLR 1143/96 and NLR 71/98, 104/98, 97/2000, 36/2001, 31/2004, 78/2006, 8/2008 and 28/2009 and outlined on 1:50 000 scale digital maps maintained by the Department of Natural Resources, will be open for staking after the hour of 9:00 a.m. on the 32<sup>nd</sup> clear day after the date of this publication.

JIM HINCHEY P.Geo  
Manager - Mineral Rights

File #: 774:0546, 4385, 4797, 4922, 5888, 6470, 7590, 7592, 7604, 7605, 7606, 7607, 7608, 7609, 7618, 7643, 7644, 7645, 7650, 7654, 7655, 7659, 7683, 7688, 7709, 7717, 7728, 7905, 8951, 8964, 8965, 8968, 8972, 8977, 8983, 9003, 9006, 9013, 9048, 9054, 9058, 9059, 9060, 9061, 9062, 9072, 9100, 9124, 9190, 9426, 9990, 9993, 9994, 9995, 9996; 775:0001, 0002

Mar 12

---

## PUBLIC ACCOUNTANCY ACT

### ROLL OF PUBLIC ACCOUNTANTS OF NEWFOUNDLAND AND LABRADOR 2010

The following people are licensed under the *Public Accountancy Act* for 2010:

David Adey, FCA  
Suite 204  
31 Peet Street  
St. John's, NL  
A1B 3W8

James L. Anstey, CA  
Walters Hoffe  
PO Box 348  
30 Roe Avenue  
Gander, NL  
A1V 1W7

Donald Anthony, CA  
Anthony & Smith Chartered Accountants  
PO Box 8161, Station A  
St. John's, NL  
A1B 3M9

Renee Attwood, CGA  
39 Commonwealth Avenue  
Mount Pearl, NL  
A1N 1W7

Tony Baggs, CGA  
Sooley & Associates  
82 Clyde Avenue  
Mount Pearl, NL  
A1N 4S2

Richard Bartlett, CGA  
81 Hollyberry Drive  
Paradise, NL  
A1L 4A1

Douglas R. Bath, CA  
Kruger Inc.  
3285 Bedford  
Montreal, Quebec  
H3S 1G5

Stephen Belanger, FCA  
Belanger Clarke Follett & McGettigan  
PO Box 8505  
53 Bond Street, Suite 200  
St. John's, NL  
A1B 3N9

Kenneth M. Bennett, CA  
Johnson Inc.  
PO Box 12049  
95 Elizabeth Avenue  
St. John's, NL  
A1B 1R7

Gordon Bishop, RPA  
Bishop & Bishop  
PO Box 10, Main Street  
Stephenville Crossing, NL  
A0N 2C0

Sandra Bishop, FCGA  
22A Kimbar Drive  
Conception Bay South, NL  
A1X 0A3

A. Donald Blackwood, FCA  
Blackwood & Warr  
Unit 303, 38 Pearson Street  
St. John's, NL  
A1A 3R1

Claude Blagdon, CGA  
681 CBS Highway, Suite 200  
Conception Bay South, NL  
A1X 3G7

M. Paul Boland, CA  
Power Boland Chartered Accountants  
Suite 809, Atlantic Place  
215 Water Street, Box 78  
St. John's, NL  
A1C 6C9

Brian Bonnell, CA  
Bonnell Cole Janes Chartered Accountants  
64 Main Street  
Corner Brook, NL  
A2H 1C6

J. Nelson Bradbury, CGA  
8 Mahogany Place  
St. John's, NL  
A1H 1A3

Mark Bradbury, FCA  
295 Frecker Drive  
St. John's, NL  
A1E 5T8

Eleanor Brennan, CA  
660 Old Broad Cove Road  
Portugal Cove-St. Philip's, NL  
A1M 2B2

Tom Brockway, CA  
Ernst & Young LLP  
7<sup>th</sup> Floor, Fortis Building  
139 Water Street  
St. John's, NL  
A1C 1B2

Michael Bruce, CA  
3 Church Hill  
St. John's, NL  
A1C 3Z7

William Brushett, FCA  
Grant Thornton LLP  
50 Bay Street, 12<sup>th</sup> Floor  
Toronto, Ontario  
M5J 2Z8

John E. Buckingham, CA  
PO Box 21187  
RPO MacDonald Drive  
St. John's, NL  
A1A 5B2

John Buckley, CA  
Molson Canada – Atlantic  
131 Circular Road  
St. John's, NL  
A1C 5W1

William Budgell, CA  
Grant Thornton LLP  
187 Kenmount Road  
St. John's, NL  
A1B 3P9

Judith Bullen, CA  
142 Michener Avenue  
Mount Pearl, NL  
A1N 4G1

Hubert Burden, CA  
PO Box 39104  
St. John's, NL  
A1E 5Y7

Trevor Burry, CA  
PricewaterhouseCoopers LLP  
3 Nageira Crescent  
Middle Cove, NL  
A1K 1M7

Derek S. Burt, CGA  
85 Huntley Drive  
Clarenville, NL  
A5A 4L1

Roland J. Burt, CGA  
10 Kawaja Drive  
Corner Brook, NL  
A2H 6R6

Douglas G. Bussey, CGA  
Smith, Bussey, Muir  
17 Sagona Avenue

Mount Pearl, NL  
A1N 4P8

John Cammie, CA  
51 Link Pond Drive  
Massey Drive, NL  
A2H 7T7

James T. Cavanagh, FCA  
Unit 303, 38 Pearson Street  
St. John's, NL  
A1A 3R1

Linda J. Chafe, CA  
7 Florizel Place  
St. John's, NL  
A1A 1L3

John Chapman, FCA  
Noseworthy Chapman Chartered Accountants  
Suite 201, 516 Topsail Road  
St. John's, NL  
A1E 2C5

Boyde Clarke, CA  
Belanger Clarke Follett & McGettigan  
PO Box 8505  
53 Bond Street, Suite 200  
St. John's, NL  
A1B 3N9

Fred Cole, CA  
25 Elmwood Crescent  
Pasadena, NL  
A0L 1K0

Peter D. Collens, CA  
Suite 102, Dorset Building  
6 Mount Carson Avenue  
Mount Pearl, NL  
A1N 3K4

William P. Collins, CA  
14 Greenfields Place  
Paradise, NL  
A1L 1Z9

Thomas P. Conway, FCA  
3 Primrose Place  
St. John's, NL  
A1B 4H1

Gordon D. Cook, FCGA  
Belanger Clarke Follett & McGettigan  
PO Box 8505  
53 Bond Street, Suite 200  
St. John's, NL  
A1B 3N9

Jonathan B. Cook, CA  
59A LeMarchant Road  
St. John's, NL  
A1C 2G9

Eric Coombs, FCA  
Gardner Coombs Winsor Coombs Chartered Accountants  
59A LeMarchant Road  
St. John's, NL  
A1C 2G9

THE NEWFOUNDLAND AND LABRADOR GAZETTE  
March 12, 2010

---

Paul R. Coombs, CA  
Gardner Coombs Winsor Coombs Chartered Accountants  
59A LeMarchant Road  
St. John's, NL  
A1C 2G9

Roger Coombs, CA  
PO Box 447  
Mount Pearl, NL  
A1N 3C4

Darren Dalton, CA  
6 Blair Place  
Gander, NL  
A1V 2M5

Gladstone Dalton, CGA  
PO Box 506  
Whitbourne, NL  
A0B 3K0

Calvin J. Dawe, CGA  
Calvin J. Dawe & Associates  
PO Box 985  
Bay Roberts, NL  
A0A 1G0

William J. Dawe, CA  
PO Box 17079  
Station Kelligrews  
Conception Bay South, NL  
A1X 3H1

James Doody, CA  
27 Aragon Crescent  
Paradise, NL  
A1L 3Z4

Pauline Downer, FCA  
68 Jasper Street  
St. John's, NL  
A1A 5E2

Derrick R. Drodge, CA  
Percy & Drodge Management Consultants  
Suite 202, 263 Memorial Drive  
Clarenville, NL  
A5A 1R5

Michael Duah, CGA  
11 Toby McDonald Street  
St. John's, NL  
A1H 0C3

Kevin Dumaresque, CA  
Deloitte & Touche LLP  
44 Chipman Hill, 7<sup>th</sup> Floor  
PO Box 6549  
Saint John, NB  
E2L 4R9

Sharon M. Dunn, CA  
235 Major's Path  
PO Box 21265  
St. John's, NL  
A1A 5B2

David DuPree, CA  
PO Box 13811  
Station A

St. John's, NL  
A1B 4G3

Kevin Dwyer, CGA  
Blagdon, Tilley & Company  
13 Ursula Crescent  
St. Philip's, NL  
A1M 1E8

David C. Earle, CA  
43 Jenny Lynn Drive  
St. Philip's, NL  
A1M 1G3

Fred Earle, CA  
3 Church Hill  
St. John's, NL  
A1C 3Z7

Donald Farrell, CA  
Walters Hoffs  
PO Box 348  
30 Roe Avenue  
Gander, NL  
A1V 1W7

Debra J. Feltham, FCGA  
Feltham Attwood, CGA's  
Suite 202, 39 Commonwealth Avenue  
Mount Pearl, NL  
A1N 1W7

Mike Fifield, CA  
45 Donna Road  
Paradise, NL  
A1L 1H9

Robert Fleming, CA  
Belanger Clarke Follett & McGettigan  
PO Box 8505  
53 Bond Street, Suite 200  
St. John's, NL  
A1B 3N9

Robert G. Flynn, CA  
Grant Thornton LLP  
49-51 Park Street  
Corner Brook, NL  
A2H 2X1

Charles Follett, CA  
PricewaterhouseCoopers LLP  
Box 75, Suite 802  
Atlantic Place  
215 Water Street  
St. John's, NL  
A1C 6C9

Jeffrey D. Follett, CA  
Belanger Clarke Follett & McGettigan  
PO Box 4, 50 Main Street  
Corner Brook, NL  
A2H 6C3

Lloyd Foote, FCA  
Deloitte & Touche LLP  
44 Chipman Hill  
PO Box 6549  
Saint John, NB  
E2L 4R9

THE NEWFOUNDLAND AND LABRADOR GAZETTE  
March 12, 2010

---

Robert Fowler, CA  
8A Hardy Avenue  
Grand Falls-Windsor, NL  
A2A 2P9

Paul Gardner, CA  
Gardner Coombs Winsor Coombs Chartered Accountants  
59A LeMarchant Road  
St. John's, NL  
A1C 2G9

Joseph F. Gough, CA  
PO Box 1717, Station C  
308 LeMarchant Road  
St. John's, NL  
A1C 5P5

Brian Groves, CA  
Deloitte & Touche LLP  
Fort William Building  
10 Factory Lane  
St. John's, NL  
A1C 6H5

A. Colin Haines, FCA  
Walters Hoffe  
PO Box 348  
30 Roe Avenue  
Gander, NL  
A1V 1W7

Lori Haines, CA  
Belanger Clarke Follett & McGettigan  
PO Box 8505  
53 Bond Street, Suite 200  
St. John's, NL  
A1B 3N9

Terry R. Hall, CGA  
Walters Hoffe  
164 Elizabeth Drive  
Gander, NL  
A1V 1H5

Gail M. Hamilton, FCA  
Ernst & Young LLP  
7<sup>th</sup> Floor, Fortis Building  
139 Water Street  
St. John's, NL  
A1C 1B2

Sean Handrigan, CA  
Harris Ryan, CA's  
Suite 202, 120 Stavanger Drive  
St. John's, NL  
A1A 5E8

Douglas G. Harris, CA  
Harris Ryan, CA's  
Suite 202, 120 Stavanger Drive  
St. John's, NL  
A1A 5E8

Christopher Hart, CA  
28 Birchmount Place  
Conception Bay South, NL  
A1X 4A4

Paul Hickey, CA  
Ernst & Young LLP

7<sup>th</sup> Floor, Fortis Building  
139 Water Street  
St. John's, NL  
A1C 1B2

Brian N. Hillier, CA  
PO Box 783  
Corner Brook, NL  
A2H 6G7

Wilson J. Hoffe, FCA  
Walters Hoffe  
PO Box 144  
Gander, NL  
A1V 1W5

David A. Hood, FCA  
Grant Thornton LLP  
Suite 303, Terrace on the Square  
PO Box 23030  
St. John's, NL  
A1B 4J9

David L. Hounsell, CA  
PO Box 606  
17 West Street  
Corner Brook, NL  
A2H 6G1

David A. Howe, FCA  
Noseworthy Chapman Chartered Accountants  
Suite 201, 516 Topsail Road  
St. John's, NL  
A1E 2C5

Derek W. Howell, CA  
PricewaterhouseCoopers LLP  
Box 75, Suite 802  
Atlantic Place  
215 Water Street  
St. John's, NL  
A1C 6C9

Terrance Hutchings, FCGA  
46 Philip Drive  
Corner Brook, NL  
A2H 6A9

Kenneth L. Hynes, CA  
Squire & Hynes  
PO Box 248, 57 Park Street  
Corner Brook, NL  
A2H 6C9

A. Roy Janes, CGA  
Janes & Company  
201 Humber Avenue  
Labrador City, NL  
A2V 2Y3

Gordon Janes, CA  
Bonnell Cole Janes Chartered Accountants  
64 Main Street  
Corner Brook, NL  
A2H 1C6

Karen W. Jennings, CA  
705 Bartlett Drive  
Labrador City, NL  
A2V 1G9

Blair J. Jewer, CA  
PO Box 471, 2A Bank Road  
Grand Falls-Windsor, NL  
A2A 2J9

Bruce Jones, CMA  
49 Albany Place  
St. John's, NL  
A1E 1Y1

Wayne Jones, CA  
Grant Thornton LLP  
187 Kenmount Road  
St. John's, NL  
A1B 3P9

Neville J. Kean, CA  
PO Box 518  
74 Broadway, Suite 204  
Corner Brook, NL  
A2H 6E6

Dorothy M. Keating, CA  
Noseworthy Chapman Chartered Accountants  
Suite 201, 516 Topsail Road  
St. John's, NL  
A1E 2C5

Francis M. Kennedy, CA  
20 Fairhaven Place  
St. John's, NL  
A1E 4S1

Ed Kent, CA  
15 Forde Drive  
St. John's, NL  
A1A 4Y1

Wayne King, CA  
200 Pine Line  
Middle Cove, NL  
A1K 5A6

Douglas Kirby, CA  
302 Hamilton Avenue  
St. John's, NL  
A1E 1J9

Gerald Kirby, CGA  
EPR Kirby and Company  
74 O'Leary Avenue  
St. John's, NL  
A1B 2C7

Daniel Kung, CA  
Kung & Roberts  
PO Box 255, 3 Neptune Drive  
Stephenville, NL  
A2N 1M9

Harold M. Laing, CGA  
The Taxshop  
26 Water Street  
Carbonear, NL  
A1Y 1B1

Robert Lanning, CGA  
Walters Hoffe  
PO Box 348  
30 Roe Avenue

Gander, NL  
A1V 1W7

Pearl R. Lee, CA  
Bruno Plaza  
Labrador City, NL  
A2V 2J8

Todd R.P. Lee, CA  
9A Church Street  
Deer Lake, NL  
A8A 1C9

Stephen Lewis CA  
PO Box 8274, Station A  
St. John's, NL  
A1B 3N4

William J. Lewis, CA  
PricewaterhouseCoopers LLP  
Box 75, Suite 802  
Atlantic Place  
215 Water Street  
St. John's, NL  
A1C 6C9

Keith Maher, CA  
Deloitte & Touche LLP  
1969 Upper Water Street  
Suite 1500, Purdy's Tower II  
Halifax, NS  
B3J 3R7

Elizabeth Marshall, CA  
140 Ortega Drive  
Paradise, NL  
A1L 2K9

Kelly A. Martin, CA  
27 Windfall Crescent  
Conception Bay South, NL  
A1W 4V3

Adrian McCarthy, CA  
9 Melrose Place  
St. John's, NL  
A1E 5V3

William McGettigan, CA  
Belanger Clarke Follett & McGettigan  
PO Box 8505  
53 Bond Street, Suite 200  
St. John's, NL  
A1B 3N9

Keith Mercer, CA  
Ernst & Young LLP  
7<sup>th</sup> Floor, Fortis Building  
139 Water Street  
St. John's, NL  
A1C 1B2

Lori Mercer, CA  
PO Box 673  
Grand Falls-Windsor, NL  
A2A 2K2

Glenn Mifflin, CA  
North Atlantic Refining Limited  
29 Pippy Place



THE NEWFOUNDLAND AND LABRADOR GAZETTE  
March 12, 2010

---

St. John's, NL  
A1B 3X2

George Y. Miller, CA  
2 Stonewall Drive  
Paradise, NL  
A1L 2R9

Peter Miller, CA  
Noseworthy Chapman Chartered Accountants  
Suite 201, 516 Topsail Road  
St. John's, NL  
A1E 2C5

Scott Milley, CA  
16 Elgin Drive  
Paradise, NL  
A1L 1G5

Robert C. Mitchell, CMA  
PO Box 518  
Marystown, NL  
A0E 2M0

Robert Mitchelmore, CA  
Grant Thornton LLP  
187 Kenmount Road  
St. John's, NL  
A1B 3P9

Wendell Moore, CA  
2B Masonic Terrace  
Clarenville, NL  
A5A 1N2

Cyril F. Morgan, FCGA  
Nuport Holdings Limited  
Box 50, 346 Empire Avenue  
St. John's, NL  
A1E 1W4

John F. Morgan, CA  
Suite 901, TD Place  
140 Water Street  
St. John's, NL  
A1C 6H6

William J. Morrissey, CA  
Morrissey & Company  
PO Box 28033  
146 Campbell Avenue  
St. John's, NL  
A1B 4J8

Sherry Moulton, CA  
Bonnell Cole Janes Chartered Accountants  
64 Main Street  
Corner Brook, NL  
A2H 1C6

Deborah A. Muir, CGA  
120 Forest Pond Road  
PO Box 1102, Station Main  
Goulds, NL  
A1S 1H2

Cyril Mullaley, CA  
23 Murley Drive  
Mount Pearl, NL  
A1N 3E1

Gerald Murphy, CGA  
14 Gibraltar Close  
Mount Pearl, NL  
A1N 3Y7

Jody Murphy, CA  
26 Cheyne Drive  
St. John's, NL  
A1A 5J6

Roy C. Naugler, CA  
15 Laughlin Crescent  
St. John's, NL  
A1A 2G1

Valerie Newhook, CA  
Noseworthy Chapman Chartered Accountants  
Suite 201, 516 Topsail Road  
St. John's, NL  
A1E 2C5

Lorne S. Newman, CGA  
46 Goldrock Run  
Conception Bay South, NL  
A1W 3K5

John W. Nicholl, CGA  
9 Yetman Drive  
Mount Pearl, NL  
A1N 3A7

John J. Noseworthy, CA  
30 Pine Hill Place  
Paradise, NL  
A1L 1Y4

John O'Brien, CA  
Grant Thornton LLP  
187 Kenmount Road  
St. John's, NL  
A1B 3P9

Colleen O'Keefe, CA  
3 Palmerston Drive  
Paradise, NL  
A1L 2Y3

Derek Osmond, CA  
23 Boyle Street  
St. John's, NL  
A1E 2H3

Jeffrey B. Pardy, FCA  
Grant Thornton LLP  
187 Kenmount Road  
St. John's, NL  
A1B 3P9

Gary J. Parsons, CA  
Walters Hoffe  
PO Box 348  
30 Roe Avenue  
Gander, NL  
A1V 1W7

R. George Parsons, CA  
PO Box 207  
Coley's Point, NL  
A0A 1X0

THE NEWFOUNDLAND AND LABRADOR GAZETTE  
March 12, 2010

---

Jerome J. Peddle, FCMA  
PO Box 28016  
St. John's, NL  
A1B 4J8

A. Guy Penney, CGA  
Penney & Co.  
2 Dollard Place  
Mount Pearl, NL  
A1N 4K5

Keith A. Penney, CA  
57 Humber Road  
Corner Brook, NL  
A2H 1E7

James Pike, CA  
PO Box 1031  
98 Broadway  
Corner Brook, NL  
A2H 6J3

A. Morris Pinsent, CGA  
PO Box 8411  
21 Pippy Place, Suite 209  
St. John's, NL  
A1B 3N7

Robert Pitcher, CA  
7 Nottingham Drive  
St. John's, NL  
A1E 4E8

Beth Porter, CA  
Noseworthy Chapman Chartered Accountants  
Suite 201, 516 Topsail Road  
St. John's, NL  
A1E 2C5

Maxwell C. Porter, FCGA  
265 Grenfell Heights  
Grand Falls-Windsor, NL  
A2A 2J2

Edward P. Power, CA  
Power Boland Chartered Accountants  
Suite 809, Atlantic Place  
Box 78, 215 Water Street  
St. John's, NL  
A1C 6C9

Michael F. Power, CA  
Power Boland Chartered Accountants  
Suite 809, Atlantic Place  
Box 78, 215 Water Street  
St. John's, NL  
A1C 6C9

Richard Power, CA  
221D Memorial Drive  
Clarenville, NL  
A5A 1R3

Steve Power, CA  
Grant Thornton LLP  
187 Kenmount Road  
St. John's, NL  
A1B 3P9

Eric Pritchett, CA  
15 Pratt Place  
Portugal Cove, NL  
A1M 3E5

David G. Purchase, CA  
Suite 325, PO Box 902  
Millbrook Mall  
Corner Brook, NL  
A2H 6J2

Philip Quinlan, FCA  
Quinlan & Taylor Chartered Accountants  
235 Major's Path, PO Box 21249  
St. John's, NL  
A1A 5B2

David Randell, CA  
PO Box 384  
Mount Pearl, NL  
A1N 2C4

Diane Rendell, CA  
194 Middle Cove Road  
Middle Cove, NL  
A1K 2A4

Donna N. Rideout, CA  
Walters Hoffe  
PO Box 348  
30 Roe Avenue  
Gander, NL  
A1V 1W7

Corey Roberts, CGA  
15 Mercers Road  
Conception Bay South, NL  
A1W 4M5

Darren Roberts, CA  
Kung & Roberts  
PO Box 255, 3 Neptune Drive  
Stephenville, NL  
A2N 1M9

Gregory Roberts, CA  
PO Box 135  
Pilley's Island, NL  
A0J 1M0

William J. Roche, CA  
19 Eastmeadows Crescent  
St. John's, NL  
A1A 3L9

Glenn Russell, CMA  
34 Oakridge Drive  
St. John's, NL  
A1A 4R8

Harold J. Ryan, CA  
Harris Ryan, CA's  
Suite 202, 120 Stavanger Drive  
St. John's, NL  
A1A 5E8

Allison Saunders, CA  
PricewaterhouseCoopers LLP  
Box 75, Suite 802  
Atlantic Place

215 Water Street  
St. John's, NL  
A1C 6C9

Brian T. Scammell, CA  
PO Box 29024  
St. John's, NL  
A1A 5B5

Bonnie Scott, CA  
PricewaterhouseCoopers LLP  
Box 75, Suite 802  
Atlantic Place  
215 Water Street  
St. John's, NL  
A1C 6C9

Kimberly Simms, CA  
Grant Thornton LLP  
187 Kenmount Road  
St. John's, NL  
A1B 3P9

Anthony J. Smith, CA  
PO Box 299  
Bay Roberts, NL  
A0A 1G0

Byron Smith, CA  
PO Box 610  
Spaniard's Bay, NL  
A0A 3X0

Keith Smith, CA  
32 Emerald Drive  
Mount Pearl, NL  
A1N 4X5

Kenneth E. Smith, CGA  
Smith & Company  
PO Box 343  
76 Old Bay Bulls Road  
Goulds, NL  
A1S 1G5

R. Bruce Smith, FCGA  
Smith & Associates  
17 Sagona Avenue  
Mount Pearl, NL  
A1N 4P8

David Snow, CA  
Walters Hoffe  
10 Jubilee Court  
Clarenville, NL  
A5A 1S9

J. Paul Snow, CA  
PO Box 771, 4 Herald Avenue  
Fortis Tower  
Corner Brook, NL  
A2H 6G7

Wayne R. Sooley, CGA  
Sooley & Associates  
82 Clyde Avenue  
Mount Pearl, NL  
A1N 4S2

Sharon Sparkes, CA  
98 Ashford Drive  
Mount Pearl, NL  
A1N 2Z5

Richard C. Squire, CA  
Squire & Hynes  
PO Box 248, 57 Park Street  
Corner Brook, NL  
A2H 6C9

Greg Stokes, CA  
391 Empire Avenue  
St. John's, NL  
A1B 1W6

Nelson W. Stokes, CA  
58 Roche Street  
St. John's, NL  
A1B 1L8

Derek H. Sullivan, CA  
7 Grant Place  
St. John's, NL  
A1E 4Y7

Kevin Sullivan, CA  
Ernst & Young LLP  
7<sup>th</sup> Floor, Fortis Building  
139 Water Street  
St. John's, NL  
A1C 1B2

Edward Sweeney, CA  
48 Kennedy Road  
Box 176, Station C  
St. John's, NL  
A1C 5J2

Paul Tapper, CA  
Morrissey & Company  
PO Box 28033  
146 Campbell Avenue  
St. John's, NL  
A1B 4J8

Gerald F. Taylor, CA  
Quinlan & Taylor Chartered Accountants  
235 Major's Path  
PO Box 21249  
St. John's, NL  
A1A 5B2

Wilson Temple, CGA  
Box 8568  
17 Mansfield Crescent  
St. John's, NL  
A1B 3P2

Spencer W. Thistle, RPA  
40 Conception Bay Highway  
Conception Bay South, NL  
A1W 3A1

Keith Tilley, CGA  
PO Box 17049  
Station Kelligrews  
Conception Bay South, NL  
A1X 3H1

THE NEWFOUNDLAND AND LABRADOR GAZETTE  
March 12, 2010

---

Douglas J. Tuck, CGA  
PO Box 727  
Clarkes Beach, NL  
A0A 1W0

Lisa Underhay, CA  
425 Campbell Street  
Esquimalt, BC  
V9A 5K5

Robert W. Verge, CA  
72 Lakeridge Crescent  
Dartmouth, NS  
B3V 2W3

Andre Vincent, CA  
Deloitte and Touche LLP  
Purdy's Wharf Tower II  
1969 Upper Water Street, Suite 1500  
Halifax, NS  
B3J 3R7

Leonard P. Walsh, CA  
34 LeMarchant Road  
St. John's, NL  
A1C 2G7

Ronald Walsh, CA  
PricewaterhouseCoopers LLP  
Box 75, Suite 802  
Atlantic Place  
215 Water Street  
St. John's, NL  
A1C 6C9

Sherry Walsh, CA  
Deloitte & Touche LLP  
Fort William Building  
10 Factory Lane  
St. John's, NL  
A1C 6H5

Steve Walters, CA  
PricewaterhouseCoopers LLP  
Box 75, Suite 802  
Atlantic Place  
215 Water Street  
St. John's, NL  
A1C 6C9

Donald J. Warr, FCA  
Blackwood & Warr  
Unit 303, 38 Pearson Street  
St. John's, NL  
A1A 3R1

Eric Wells, FCA  
Noseworthy Chapman Chartered Accountants  
3 Wells Crescent  
Mount Pearl, NL  
A1N 4L9

George Whey, CA  
Whey & Whey Chartered Accountants  
Suite 203, PO Box 241  
216 Airport Blvd.  
Gander, NL  
A1V 1W6

Vincent R. Whey, CA  
Whey & Whey Chartered Accountants  
Suite 203, PO Box 241  
216 Airport Blvd.  
Gander, NL  
A1V 1W6

David R. White, FCGA  
37 Glenview Terrace  
St. John's, NL  
A1E 3H8

Gregory D. White, CA  
PO Box 1135  
2<sup>nd</sup> Floor, 96 West Street  
Corner Brook, NL  
A2H 6T2

Jerry D. White, CA  
Pennecon Limited  
PO Box 8274, Station A  
St. John's, NL  
A1B 3N4

Robert M. White, CA  
43 Sagona Avenue  
Mount Pearl, NL  
A1N 4P9

Steve White, CA  
Sooley & Associates  
82 Clyde Avenue  
Mount Pearl, NL  
A1N 4S2

Norm Williams, CA  
Grant Thornton LLP  
187 Kenmount Road  
St. John's, NL  
A1B 3P9

Michael J. Wilson, FCA  
Ernst & Young LLP  
Ernst & Young Tower  
222 Bay Street, Box 251  
Toronto, ON  
M5K 1J7

Darryl Winsor, CA  
Gardner Coombs Winsor Coombs Chartered Accountants  
59A LeMarchant Road  
St. John's, NL  
A1C 2G9

Peter Winters, CGA  
Noseworthy Chapman Chartered Accountants  
Suite 201, 516 Topsail Road  
St. John's, NL  
A1E 2C5

DR. ALEX FASERUK  
Chair  
Public Accountants Licensing Board

SHELLEY SENIOR, LL.B.  
Secretary  
Public Accountants Licensing Board

---

Mar 12

---

**URBAN AND RURAL PLANNING ACT**

**NOTICE OF REGISTRATION  
TOWN OF TRAYTOWN  
MUNICIPAL PLAN 2009  
AND DEVELOPMENT  
REGULATIONS 2009**

Take notice that the TOWN OF TRAYTOWN Municipal Plan 2009 and Development Regulations 2009, adopted on the 10<sup>th</sup> day of June, 2009 and approved on the 26<sup>th</sup> day of October, 2009, have been registered by the Minister of Municipal Affairs.

The Traytown Municipal Plan 2009 and Development Regulations 2009 come into effect on the day that this notice is published in *The Newfoundland and Labrador Gazette*. Anyone who wishes to inspect a copy of the Traytown Municipal Plan 2009 and Development Regulations 2009 may do so at the Town Office, Traytown during normal working hours.

TOWN OF TRAYTOWN  
Sarah Patten, Town Clerk

Mar 12

**MOTOR CARRIER ACT**

**IN THE MATTER OF THE *MOTOR CARRIER ACT*,  
cM-19, RSNL 1990  
AND  
IN THE MATTER OF THE APPLICATION FOR A  
MOTOR CARRIER CERTIFICATE**

**NOTICE OF APPLICATION**

TAKE NOTICE that TREMBLETT'S AMBULANCE SERVICE LTD of P. O. Box 1314, Wabana, Bell Island NL A0A 4H0, has applied to the Board of Commissioners of Public Utilities under the provisions of the *Motor Carrier Act*, cM-19, RSNL 1990, for the issuance of a Certificate as a motor carrier to provide the following services:

*IRREGULAR SPECIALTY AMBULANCE SERVICE  
for the transportation of persons  
requiring medical attention or under  
medical care upon the request of  
a medical doctor or registered nurse*

**from Bell Island to any hospital, nursing home, first aid station or home for senior citizens and upon the specific request of a medical doctor, registered nurse or a police officer between any two points within the province of Newfoundland and Labrador**

The Board, having reviewed the application, has granted provisional approval and shall issue said Certificate, unless a person who objects to the application files with the Board a notice of objection to the application together with a written statement setting out in full the reasons why the

application should be denied and relevant documentary evidence. The objector must also serve on the applicant a copy of the notice of objection, the statement of reasons and the relevant documentary evidence filed with the Board by personal service or by prepaid, registered mail, at the address shown on the application, and proof of service must be supplied to the Board.

The evidence to be submitted must be received by the Board within twenty days of the date of the publication of this notice, at the office of the Board at Suite East 210, Prince Charles Building, Torbay Road, NL or by mail to P. O. Box 21040, St. John's, NL A1A 5B2.

Dated at Bell Island, Newfoundland and Labrador, this 4<sup>th</sup> day of March, 2010.

GERALD TREMBLETT  
Signature of Applicant

Mar 12

**QUIETING OF TITLES ACT**

**2009 05T 0051  
IN THE SUPREME COURT OF  
NEWFOUNDLAND AND LABRADOR  
TRIAL DIVISION**

Notice of Application under the *Quieting of Titles Act*, cQ-3 of the RSNL 1990 and amendments thereto

Notice is hereby given to all parties that JOYCE SAINT, of Musgravetown, in the District of Terra Nova, in the Province of Newfoundland and Labrador, has applied to the Supreme Court, Trial Division, Gander, to have title to all that piece or parcel of property situate at Bunyan's Cove, in the Province of Newfoundland and Labrador, which property is more particularly described in Schedule "A" hereto annexed and shown in Schedule "B" hereto annexed.

ALL BEARINGS aforementioned, for which Joyce Saint claims to be the owner investigated and for a Declaration that Joyce Saint is the absolute owner in fee simple in possession and the said JOYCE SAINT has been ordered to public Notice of Application as required by the above named Act.

All persons having title adverse to the said title claimed by the said JOYCE SAINT shall file in the Registry of the Supreme Court of Newfoundland and Labrador, Trial Division, Gander, particulars of such adverse claim and serve the same together with an Affidavit verifying same on the undersigned Solicitors for the Petitioner on or before the 5<sup>th</sup> day of April, 2010, after which date no party having any claim shall be permitted to file the same or to be heard except by special leave of the Court and subject to such conditions as the Court may deem just.

All such adverse claims shall be investigated then in such manner as the Supreme Court of Newfoundland, Trial Division, Gander, may direct.

DATED AT Clarenville, in the Province of Newfoundland and Labrador, this 5<sup>th</sup> day of March, 2009.

MILLS PITTMAN LAW OFFICES  
Solicitors for the Applicant  
PER: Corwin Mills

ADDRESS FOR SERVICE:  
111 Manitoba Drive  
Suite 201  
Clarenville, NL A5A 1K2

**CLAYTON AND JOYCE SAINT  
BUNYAN'S COVE, NL**

**SCHEDULE "A"**

ALL THAT piece or parcel of land situate and being in the Community of Bunyan's Cove, in the Electoral District of Terra Nova abutted and bounded as follows:

THAT IS TO SAY: Beginning at a point on the southern limit of Bunyan's Cove Road (20 metres wide), the said point having coordinates N 5 362 384.73 metres and E 229 625.46 of the Three Degree Modified Transverse Mercator Projection (NAD-83) for the Province of Newfoundland and Labrador;

Thence along the said southern limit of Bunyan's Cove Road north fifty-nine degrees thirty-nine minutes ten seconds east (N 59-39-10 E) twenty-nine decimal four eight (29.48) metres;

Thence along the said southern limit of Bunyan's Cove Road along the arc of a curve having a radius of forty-nine decimal eight two (49.82) metres to a point, the said point being distant twenty-eight decimal zero six (28.06) metres as measured on a bearing of north seventy-eight degrees twenty-five minutes forty seconds east (N 78-25-40 E) from the last mentioned point;

Thence along the said southern limit of Bunyan's Cove Road south eighty-five degrees fifty-three minutes zero five seconds east ( S 85-53-05 E) twenty-three decimal eight four (23.84) metres;

Thence by property of Robert King south six degrees thirty-nine minutes zero zero seconds east (S 6-39-00 E) forty-eight decimal two one (48.21) metres, north eighty-five degrees fifty minutes zero zero seconds east (N 85-50-00 E) forty-three decimal four seven (43.47) metres;

Thence along the western limit of a Reserved Road (20 metres wide) (portions of Reserved Road claimed by James Baker, Stephen Kelly and Hedley Moss) south thirty degrees twelve minutes fifty-five seconds east (S 30-12-55E) five hundred and thirty-one decimal two seven (531.27) metres;

Thence along the western limit of a Reservation (15 metres wide) of a Brook south one degree thirty minutes fifteen seconds west (S 1-30-15 W) twenty-three decimal one nine (23.19) metres;

Thence by Crown Land south fifty-nine degrees forty-seven minutes zero five seconds west (S 59-47-05 W) eighty-eight decimal three nine (88.39) metres;

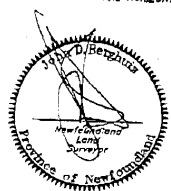
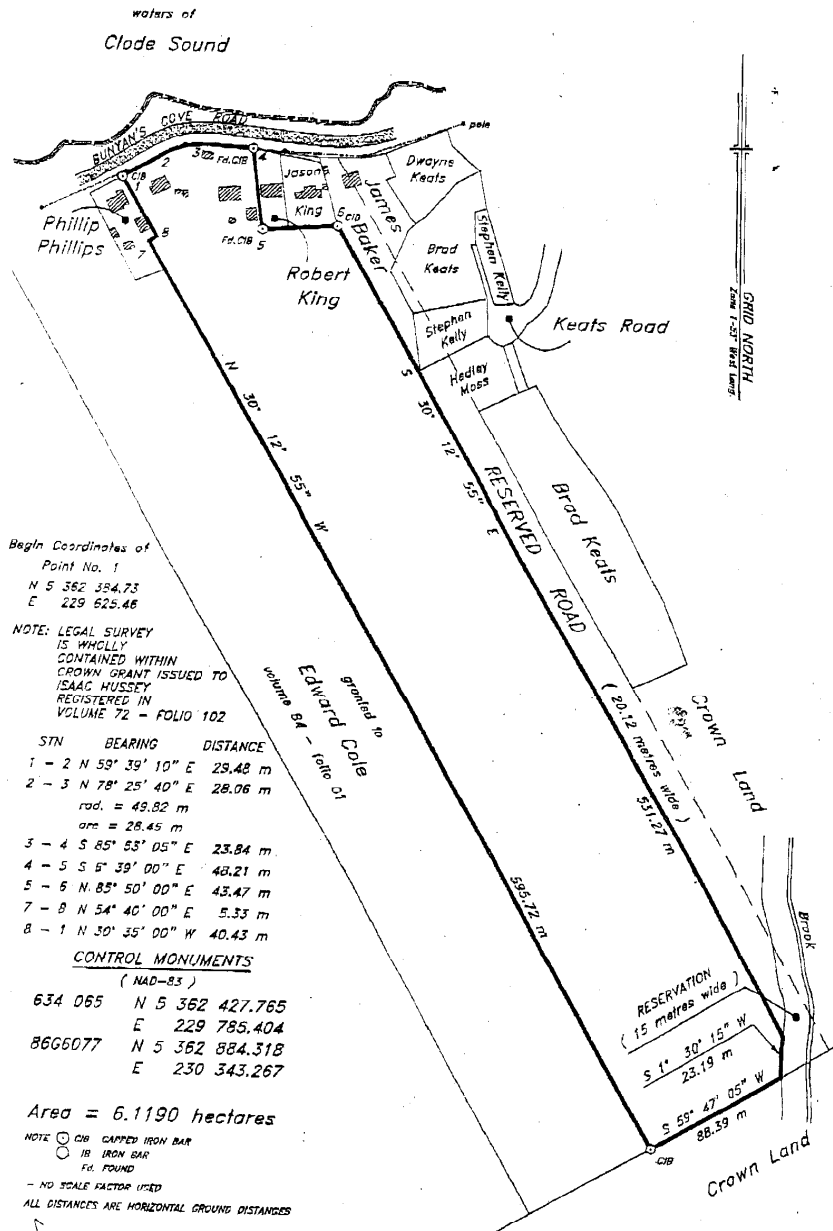
Thence along the eastern boundary of a grant issued by the Crown to Edward Cole registered in volume eighty-four – folio 01 in the Registry for Crown Grants for the Province of Newfoundland and Labrador north thirty degrees twelve minutes fifty-five seconds west (N 30-12-55W) five hundred and ninety-five decimal seven two (595.72) metres;

Thence by property of Phillip Phillips north fifty-four degrees forty minutes zero zero seconds east (N 54-40-00 E) five decimal three three (5.33) metres, north thirty degrees thirty-five minutes zero zero seconds west (N 30-35-00 W) forty decimal four three (40.43) metres, more or less to the point of beginning and containing an area of 8.1190 hectares.

All bearings refer to the above mentioned Projection.

CONTROL SURVEYS LTD.

SCHEDULE "B"



(((CONTROL SURVEYS LTD. NEWFOUNDLAND LAND SURVEYORS 59 MARINE DRIVE - BOX 145 - TEL: (709) 486-3888			
Clareville			Newfoundland
SURVEY ON BEHALF OF CLAYTON and JOYCE SAINT			
Bunyan's Cove			Newfoundland
SCALE:	1 : 2500	JOB No.:	2009-219
DATE:	September 3, 2009	SURVEY BY:	J.D.B.



# THE NEWFOUNDLAND AND LABRADOR GAZETTE

## PART II

### SUBORDINATE LEGISLATION FILED UNDER THE STATUTES AND SUBORDINATE LEGISLATION ACT

---

Vol. 85

ST. JOHN'S, FRIDAY, MARCH 12, 2010

No. 10

---

**NEWFOUNDLAND AND LABRADOR**

**REGULATION**

**NLR 12/10**





## NEWFOUNDLAND AND LABRADOR REGULATION 12/10

*Capital Tax Regulations*  
under the  
*Income Tax Act, 2000*  
(O.C. 2010-070)

*(Filed March 10, 2010)*

Under the authority of section 66.6 of the *Income Tax Act, 2000*, the Lieutenant-Governor in Council makes the following regulations.

Dated at St. John's, March 3, 2010.

Gary Norris  
Clerk of the Executive Council

### REGULATIONS

#### *Analysis*

1. Short title
2. Formulae described
3. Repeal

Short title

**1.** These regulations may be cited as the *Capital Tax Regulations*.

Formulae described

**2.** (1) The non-provincial amount taxable of a loan corporation, a trust corporation or a trust and loan corporation is computed in accordance with the following formula:

$$A = B \times C/D$$

(2) The non-provincial amount taxable of a bank is computed in accordance with the following formula:

$$A = B \times 1/3 (E/F + G/H)$$

(3) For the purpose of the formulae set out in subsections (1) and (2)

- (a) "A" means the non-provincial amount taxable;
- (b) "B" means the capital of the corporation for the taxation year that exceeds its capital deduction for the year;
- (c) "C" means the gross revenue of the corporation's permanent establishments in jurisdictions outside the province and is equal to the aggregate of the corporation's gross revenue for the taxation year arising from
  - (i) loans secured by real property situated outside the province,
  - (ii) loans not secured by real property and made to persons residing outside the province,
  - (iii) loans administered by the permanent establishments in jurisdictions outside the province made to persons residing in a jurisdiction in which the corporation has no permanent establishment, but not including loans secured by real property situated in a jurisdiction in which the corporation has a permanent establishment, and
  - (iv) business conducted at the corporation's permanent establishments in jurisdictions outside the province other than revenue arising from loans;
- (d) "D" means the total gross revenues of the corporation in all jurisdictions for the taxation year;
- (e) "E" means the aggregate of the salaries and wages paid in the taxation year by the corporation to employees of its permanent establishments in jurisdictions outside the province;

- (f) "F" means the aggregate of the salaries and wages paid in the taxation year by the corporation to its employees in all jurisdictions;
  - (g) "G" means 2 times the aggregate amount of loans made by, and the amount of deposits with, the permanent establishments of the bank in jurisdictions outside the province in the taxation year;
  - (h) "H" means the aggregate amount of loans made by, and the amount of deposits with, the bank in all jurisdictions for the taxation year;
  - (i) "aggregate amount of loans" means the aggregate of the amounts outstanding on loans made by the bank, as determined at the close of business on the last day of each month in the taxation year, divided by 12;
  - (j) "amount of deposits" means the aggregate of amounts on deposit with the bank, as determined at the close of business on the last day of each month in the taxation year, divided by 12;
  - (k) "deposits" does not include bonds, stocks, debentures, items in transit and deposits in favour of the Crown in right of Canada;
  - (l) "loans" does not include bonds, stocks, debentures, items in transit and deposits in favour of the Crown in right of Canada; and
  - (m) "non-provincial amount taxable" means the portion of the corporation's amount taxable that is used by the corporation in jurisdictions outside the province, as determined in accordance with these regulations.
- (4) Where
- (a) "F" equals 0 for the taxation year, the formula in subsection (2) is  $A=B \times \frac{1}{2} (G/H)$ ; and
  - (b) "H" equals 0 for the taxation year, the formula in subsection (2) is  $A=B \times (E/F)$ .

Repeal

**3. The *Financial Corporations Capital Tax Regulations, Consolidated Newfoundland and Labrador Regulation 1118/96*, is repealed.**

©Earl G. Tucker, Queen's Printer

## Index

### PART I

City of St John's Act – Notice .....	65
Mineral Act – Notice .....	65
Motor Carrier Act – Notice.....	77
Quieting of Titles Act– Notice.....	77
Public Accountancy Act– Notice.....	68
Urban and Rural Planning Act– Notice .....	77

### PART II

#### CONTINUING INDEX OF SUBORDINATE LEGISLATION

Title of Act and Subordinate Legislation made thereunder	CNLR or NL Reg.	Amendment	NL Gazette Date & Page No.
<b>Income Tax Act, 2000</b>			
Capital Tax Regulations	NLR 12/10	R&S CNLR 1118/96	Mar. 12/10 p.79

*The Newfoundland and Labrador Gazette* is published from the office of Earl G. Tucker, Queen's Printer.

Copy for publication must be received before **Friday, 4:30 p.m.**, seven days before publication, to ensure inclusion in next issue.

Advertisements should be typewritten or printed legibly, separate from covering letter. Number of insertions required must be stated and the names of all signing officers typewritten or printed.

Copy may be mailed to the address below, faxed to (709) 729-1900 or emailed to [queensprinter@gov.nl.ca](mailto:queensprinter@gov.nl.ca).

Advertising rates are available upon request. Subscription rate for *The Newfoundland and Labrador Gazette* is \$125.00 for 52 weeks plus applicable tax (\$131.25). Weekly issues of \$3.00 per copy, plus tax payable in advance.

All cheques, money orders, etc., should be made payable to THE NEWFOUNDLAND EXCHEQUER ACCOUNT and all correspondence should be addressed to: Office of the Queen's Printer, P. O. Box 8700, Ground Floor, East Block, Confederation Building, St. John's, NL A1B 4J6. Telephone (709) 729-3649. Fax: (709) 729-1900.

Web Site: <http://www.gs.gov.nl.ca/gs/oqp>

**Place your order by contacting:  
Office of The Queen's Printer  
Confederation Building, East Block  
St. John's, NL A1B 4J6  
Telephone: (709) 729-3649 Fax: (709) 729-1900  
email: [queensprinter@gov.nl.ca](mailto:queensprinter@gov.nl.ca)**

**Government Information Product  
Publication Rate Mail  
G.S.T. # R107442683**

**All requests for Subscription and Legislation MUST be prepaid.**