

# THE NEWFOUNDLAND AND LABRADOR GAZETTE

## PART I

PUBLISHED BY AUTHORITY

Vol. 85 ST. JOHN'S, FRIDAY, MARCH 19, 2010 No. 11

<b>CORPORATIONS ACT</b>					
			2010-01-07	61596	RESOLVE MANAGEMENT SERVICES LTD
			2010-01-07	61589	ACROSS THE ISLAND CONTRACTING LIMITED
		<i>Corporations Act - Section 393</i>			CROC COMPUTERS LTD
		Local Incorporations			Murley Developments Ltd.
		For the Month of: January 2010			CHAMBERLAINS PARK ACTION COMMITTEE INC.
<b>Date</b>	<b>Number</b>	<b>Company Name</b>			
2010-01-04	61576	GUATEMALA - CHILDREN FIRST INC.	2010-01-07	61590	HICKEYS SNOWCLEARING INC.
2010-01-04	61551	NEWFOUNDLAND FLUORSPAR EXPLORATION LTD.	2010-01-08	61600	HYPERION MINERALS. COM INC.
2010-01-04	61570	Homeworx Modular Home Systems Inc.	2010-01-08	61599	61593 NEWFOUNDLAND & LABRADOR LTD.
2010-01-05	61578	61578 NEWFOUNDLAND AND LABRADOR INC	2010-01-08	61593	Karen Robertson's Blood Collection Services Ltd.
2010-01-05	61582	61582 NEWFOUNDLAND AND LABRADOR INC.	2010-01-08	61597	Atsanik Consulting Ltd.
2010-01-05	61579	DRC REALTY LTD.	2010-01-08	61598	ALL KNIGHT INCORPORATED
2010-01-05	61581	VAULT PROPERTY MANAGEMENT LTD.	2010-01-11	61608	B.E.S.T. ENTERPRISES LIMITED
2010-01-05	61577	COLLINS CONVENIENCE LTD.	2010-01-11	61611	L'ANSE AU PIGEON INC.
2010-01-06	61585	LMN HOLDINGS LIMITED	2010-01-11	61613	MARLER WORKS INC.
2010-01-06	61588	SYLTAK CONSULTING CORP.	2010-01-11	61614	MARYSTOWN TRAIL ASSOCIATION LTD.
2010-01-07	61595	CABOT CATERING LTD.	2010-01-11	61615	NFLD. CUSTOM WHEELS INC.
2010-01-07	61594	FRESH START FARMS LTD.	2010-01-11	61607	

THE NEWFOUNDLAND AND LABRADOR GAZETTE  
March 19, 2010

2010-01-11	61609	QUALITY MAINTENANCE AND SERVICES LIMITED	2010-01-19	61678	JSM GROUP INC.
2010-01-11	61606	ST. JOHN'S EXTERIORS' (2009) INC.	2010-01-19	61679	LA AUTO DETAILING INC.
2010-01-11	61603	Chinese Therapy Centre Ltd.	2010-01-19	61680	M9 PRODUCTIONS CORP.
2010-01-11	61604	H.A.N. Investments Inc.	2010-01-19	61683	RED SEAL ROOFING LTD.
2010-01-12	61622	DAVE'S CONCRETE & DESIGN LTD.	2010-01-19	61673	Fresh Air Contracting Ltd.
2010-01-12	61621	KCA CONSULTANTS INC	2010-01-19	61674	Republic Development Corporation
2010-01-12	61623	NORDIK CAMP INC.	2010-01-19	61675	FMY Holdings Inc.
2010-01-12	61628	VF SOLUTIONS LTD.	2010-01-19	61676	UNITY FUNERAL SERVICES INC.
2010-01-12	61610	Virtual Real Estate Receptionist Inc.	2010-01-20	61694	ACQUAINT PERSONNEL SERVICES INC.
2010-01-13	61631	61631 NEWFOUNDLAND & LABRADOR INC	2010-01-20	61691	BLACKHAWK INDUSTRIAL SERVICES INC.
2010-01-13	61632	61632 NEWFOUNDLAND & LABRADOR LTD.	2010-01-20	61693	KARRIGAN PROCESS SOLUTIONS INTERNATIONAL INC.
2010-01-13	61633	NEWFOUNDLAND LABRADOR CHILDREN'S FESTIVAL INC.	2010-01-20	61695	RAVENCOR PROJECTS INC.
2010-01-13	61630	SUMMER PALACE RESTAURANT INC.	2010-01-20	61688	THE GROOMING ZOO LTD.
2010-01-13	61634	TRINITY/CONCEPTION NORTH WASTE MANAGEMENT INC.	2010-01-20	61684	61684 NEWFOUNDLAND & LABRADOR INC
2010-01-13	61626	J & K CONTRACTING LTD.	2010-01-20	61685	CAPA Consulting Ltd.
2010-01-13	61629	JC Siding Limited	2010-01-20	61686	BAMBOO ENTERPRISES INC.
2010-01-14	61642	BDC ENTERPRISES INC.	2010-01-21	61698	PERSPECTIVE IT INC.
2010-01-14	61646	LAMANCHE CONSTRUCTION INC.	2010-01-21	61696	61696 NEWFOUNDLAND AND LABRADOR INC.
2010-01-14	61643	OCD HOLDINGS INC.	2010-01-21	61697	Manocha Psychological Consulting Services Inc.
2010-01-14	61645	QUALITY CHIMNEY SWEEP LTD.	2010-01-22	61707	ENGLISH HARBOUR EAST A.T.V. TRAIL ASSOCIATION INC
2010-01-14	61647	TAILS OF THE CITY INC.	2010-01-22	61708	MASI HOLDINGS LIMITED
2010-01-14	61648	WITLESS BAY AND AREA CONSERVATION GROUP INC.	2010-01-22	61705	VANNE TECHNICAL SERVICES INC.
2010-01-14	61637	Advanced Diagnostic Centres of NL Ltd.	2010-01-22	61704	WLS CONSULTING INC.
2010-01-14	61641	Dwayne Small Engine Repair Ltd.	2010-01-22	61701	Bit Trap Studios Canada, Inc.
2010-01-15	61658	20100101 TURNAROUND INC.	2010-01-22	61702	Belmont Holdings Limited
2010-01-15	61654	BRIDGER INVESTMENTS LIMITED	2010-01-25	61715	61715 NEWFOUNDLAND AND LABRADOR LIMITED
2010-01-15	61661	C & D RECREATION INC.	2010-01-25	61716	61716 NEWFOUNDLAND AND LABRADOR LIMITED
2010-01-15	61659	HUMBER KINETTES INC.	2010-01-25	61714	CAR GUYS APPEARANCE CENTER INC.
2010-01-15	61656	VINTAGE WOODWORKS AND CABINETRY LIMITED	2010-01-25	61713	COL-TERR HOLDINGS LIMITED
2010-01-15	61650	61650 NEWFOUNDLAND & LABRADOR INC.	2010-01-25	61711	GLAZ TEK LIMITED
2010-01-15	61651	Silvertip Resources Inc.	2010-01-25	61717	GRABBA MEMORY INC.
2010-01-15	61652	3 D Plumbing & Heating Inc.	2010-01-25	61718	SENIORS' PEER ADVOCATES OF BONAVIDA AREA INC.
2010-01-15	61653	61653 NEWFOUNDLAND AND LABRADOR INC.	2010-01-25	61703	61703 NEWFOUNDLAND & LABRADOR INC.
2010-01-18	61672	BESAW ENGINEERING SERVICES AND WORKS INC.	2010-01-25	61709	Kenny's Kitchens Ltd.
2010-01-18	61669	HEDDERSON'S PETRO INC.	2010-01-25	61710	TW Fitness INC
2010-01-18	61671	SOUTHERN HBR FISHERMANS BLDG COMMITTEE INC.	2010-01-26	61725	61725 NEWFOUNDLAND AND LABRADOR LTD.
2010-01-18	61670	TRYCO HOLDINGS LIMITED	2010-01-26	61729	CHATTERS MOUNT PEARL LIMITED
2010-01-18	61665	Atlantic Clean Energy International Corporation	2010-01-26	61732	COMITÉ PROVINCIAL DES JEUX DE L'ACADIE, RÉGION TERRE-NEUVE-ET-LABRADOR INC.
2010-01-18	61666	Krizan Holdings Ltd.	2010-01-26	61726	D1 CONTRACTING LIMITED
2010-01-18	61667	Karma Clinical Trials Inc.	2010-01-26	61727	HEALING EXPRESSIONS INC.
2010-01-18	61668	New Experience Inc.	2010-01-26	61728	SIMONY HOLDINGS INC
2010-01-19	61682	C & N TRUCKING INC.	2010-01-26	61738	TRINITY CORPORATE SERVICES INCORPORATED
2010-01-19	61677	DR. ASOKA SAMARASENA PMC INC.	2010-01-26	61712	L & M Enterprises Limited
2010-01-19	61681	FRESH - PAINT & PLASTER INC	2010-01-26	61719	Marystown Ventilation Products Limited

THE NEWFOUNDLAND AND LABRADOR GAZETTE  
March 19, 2010

2010-01-26	61720	D&L Contracting Services Incorporated	2010-01-28	48260	ATF ONCIDIUM (ATLANTIC) INC.
2010-01-26	61722	Labrador Eco-Adventures Ltd.			
2010-01-26	61724	Dr. Kent E.A. Sorensen Dental Clinic Inc.	Total Revivals: 7		
2010-01-27	61742	CREO CONSTRUCTION LTD.	<i>Corporations Act - Section 296 and 393</i>		
2010-01-27	61739	DTS CONSULTING INC	Local Continuances		
2010-01-27	61746	ELECTRICAL CONCEPTS INC.	For the Month of: January 2010		
2010-01-27	61740	JUBILEE MANAGEMENT LTD.	<b>Date</b>	<b>Number</b>	<b>Company Name</b>
2010-01-27	61743	NICHOLS LANDING INC.	2010-01-07	61592	RODGER MOUNCE INVESTMENT CORPORATION
2010-01-27	61741	NORTH ATLANTIC CEMENT AND CONSTRUCTION LTD.	Total Continuances: 1		
2010-01-27	61737	Crysway Holdings Inc.	<i>Corporations Act - Section 286</i>		
2010-01-28	61758	61758 NEWFOUNDLAND AND LABRADOR LIMITED	Local Amendments		
2010-01-28	61759	BCM HOLDINGS LIMITED	For the Month of: January 2010		
2010-01-28	61755	DOMINION PAVING (2010) LIMITED	<b>Date</b>	<b>Number</b>	<b>Company Name</b>
2010-01-28	61754	GENOA HOLDINGS LIMITED	2010-01-05	30853	10240 Newfoundland Inc.
2010-01-28	61756	GENOA INVESTMENTS LIMITED	2010-01-05	60009	BLIZZARD SPORTS & ENTERTAINMENT INC.
2010-01-28	61760	JTC HOLDINGS LIMITED	2010-01-05	60951	ROYAL WOOD DESIGN LTD.
2010-01-28	61752	MKS HOLDINGS LIMITED	2010-01-05	31197	TAD HOLDINGS LTD.
2010-01-28	61753	NEPTUNE HOLDINGS LIMITED	2010-01-05	61571	TRACT CONSULTING INC.
2010-01-28	61757	NEPTUNE INVESTMENTS LIMITED	2010-01-06	2380	BELLA VISTA LIMITED
2010-01-28	61751	TRIMWOOD CONSTRUCTION INC	2010-01-06	49933	DRS CONSULTING INC.
2010-01-28	61744	Blackawton Distillery Inc	2010-01-07	54124	47 NORTH INVESTMENTS INC.
2010-01-28	61745	61745 NEWFOUNDLAND & LABRADOR INC.	2010-01-08	8589	Aubrey Limited
2010-01-28	61747	Sanco Builders Ltd.	2010-01-11	60728	CAST CONSTRUCTION INC
2010-01-28	61749	EFDF HOLDINGS INC.	2010-01-11	53091	M & R Construction Limited
2010-01-28	61750	Meridian Consulting Incorporated	2010-01-11	61025	NS Holdings Inc
2010-01-29	61767	61767 NEWFOUNDLAND & LABRADOR INC.	2010-01-11	60558	OVANTAGE HOLDINGS LIMITED
2010-01-29	61770	61770 NEWFOUNDLAND & LABRADOR INC.	2010-01-14	61339	MAJESTIC BATH INC.
2010-01-29	61771	61771 NEWFOUNDLAND & LABRADOR INC.	2010-01-14	55800	SUMMIT CAPITAL INC.
2010-01-29	61773	61773 NEWFOUNDLAND & LABRADOR INC.	2010-01-15	61589	ACROSS THE ISLAND CONTRACTING LIMITED
2010-01-29	61774	61774 NEWFOUNDLAND AND LABRADOR LIMITED	2010-01-18	54246	JEWISH COMMUNITY HAVURA INC.
2010-01-29	61764	DWJ ENTERPRISES LTD.	2010-01-19	60969	DR. A.N. KALOMBO PMC INC.
2010-01-29	61766	HYNES ELECTRICAL INC	2010-01-19	61416	DR. H.M. KHAN PMC INC.
2010-01-29	61765	SHAGGIS SERVICES INC.	2010-01-19	51485	ELTON MANAGEMENT CONSULTING, INC.
2010-01-29	61761	Evergreen Construction Limited	2010-01-20	21782	Fortis Inc.
2010-01-29	61762	WESTERN LABRADOR RAIL SERVICES INC.	2010-01-20	50879	FRENCHY'S CLOTHING STORE LTD.
2010-01-29	61763	The Motion Show Inc.	2010-01-20	61667	Karma Clinical Trials Inc.
			2010-01-21	16831	The Tailor Shop Limited
			2010-01-22	41642	10778 Nfld. Limited
			2010-01-22	41643	10779 Nfld. Limited
			2010-01-22	61523	61523 NEWFOUNDLAND AND LABRADOR LIMITED
			2010-01-22	45579	N & N CONVENIENCE LIMITED
			2010-01-22	18343	N & N Vending Limited
			2010-01-22	19255	N. P. Investments Limited
			2010-01-22	33621	R. & D. Holdings Ltd.
			2010-01-22	32763	RIGOR CANADA INC.
			2010-01-25	60527	JOVANAX ENTERPRISES INC
			2010-01-26	60158	DEANNA DEAN ENTERPRISES LIMITED
			2010-01-26	61675	FMY Holdings Inc.
			2010-01-28	21321	BRIDGER DESIGN ASSOCIATES LIMITED
Total Incorporations: 152					
<i>Corporations Act - Section 331</i>					
Local Revivals					
For the Month of: January 2010					
<b>Date</b>	<b>Number</b>	<b>Company Name</b>			
2010-01-11	28960	L & R HOLDINGS LTD.			
2010-01-19	30844	Rainbow Park Ltd.			
2010-01-19	5265	Wm. L. Chafe & Son Limited			
2010-01-22	47065	EMMA & DAD INC.			
2010-01-22	19315	Primmer's Workshop Limited			
2010-01-27	43466	INUKSHUK DEVELOPMENT CORPORATION INC.			

THE NEWFOUNDLAND AND LABRADOR GAZETTE  
March 19, 2010

2010-01-28	25979	DISTRICT DRUGS LIMITED	2010-01-25	54688	SCOTT WILLIAMS ENTERPRISES INCORPORATED
2010-01-28	52018	DR. ASHRAF SALIB INVESTMENTS CORPORATION	2010-01-25	57743	Special Olympics Marystown 2008 Inc.
2010-01-28	46153	ERCO HOMES INC.	2010-01-26	53795	COUTURE & STUDIO INC.
2010-01-28	25980	KKAM HOLDINGS LIMITED	2010-01-28	17672	Dawe's Transport Limited
2010-01-28	31576	VENTURE VACUUMS & VENTILATIONS LTD	2010-01-28	3552	J. B. Holdings Limited
2010-01-29	55215	INDUSTRIAL ENGINEERING & AUTOMATION SOLUTIONS LTD.	2010-01-29	44952	C & T RENTALS INC.
			2010-01-29	32087	Downey Enterprises Ltd.

Total Amendments: 42

Total Dissolutions: 31

---

*Corporations Act - Section 337*  
Local Intents to Dissolve  
For the Month of: January 2010

<b>Date</b>	<b>Number</b>	<b>Company Name</b>
2010-01-15	16506	H. J. Squires Limited
2010-01-25	40082	Crown of the Valley Development Corporation

Total Intents to Dissolve: 2

---

*Corporations Act - Section 335*  
Local Dissolutions  
For the Month of: January 2010

<b>Date</b>	<b>Number</b>	<b>Company Name</b>
2010-01-05	41921	AVALON UNITARIAN FELLOWSHIP, INC.
2010-01-05	34298	MOORFISH LIMITED
2010-01-06	50064	2006 NEWFOUNDLAND AND LABRADOR WINTER GAMES (HUMBER VALLEY) INC.
2010-01-06	55741	T.J. STORAGE LIMITED
2010-01-07	57547	S and T Contractors Inc.
2010-01-07	6711	T & T Developments Limited
2010-01-11	50699	ISLAND INVESTIGATIVE SERVICES INC.
2010-01-11	61242	JUNIOR (JR.) GENERAL CONTRACTING CORPORATION
2010-01-13	40003	Drilling Production Technology Canada Inc.
2010-01-13	20300	Free Spirit Enterprises Limited
2010-01-13	54373	RAP CONTRACTING LTD.
2010-01-13	47464	SGS Design Limited
2010-01-14	52203	2T ELECTRICAL LTD
2010-01-14	47973	CROSSING DENTAL CLINIC LTD.
2010-01-14	20264	ROBINSON'S LUMBER YARD LIMITED
2010-01-15	52767	DYNAMIC MARINE INC.
2010-01-15	16506	H. J. Squires Limited
2010-01-15	46022	K & C DRAFTING & DESIGN SERVICES INC.
2010-01-19	59987	TEST PHOTONICS LTD
2010-01-20	60585	CBS Family Support Coalition Inc.
2010-01-20	29633	MOLLOY MECHANICAL LIMITED
2010-01-20	13995	STONEVILLE RECREATION BOARD
2010-01-22	39688	Saunders Investments Ltd.
2010-01-25	47570	Quatre Holdings Inc

---

*Corporations Act - Section 299*  
Local Discontinuances  
For the Month of: January 2010

<b>Date</b>	<b>Number</b>	<b>Company Name</b>
2010-01-05	60719	BLOW BEFORE YOU GO BREATH ALERT LIMITED
2010-01-18	55083	SONCO GROUP INC.
2010-01-19	59208	59208 NEWFOUNDLAND & LABRADOR LIMITED

Total Discontinuances: 3

---

*Corporations Act - Section 294*  
Local Amalgamations  
For the Month of: January 2010

<b>Date</b>	<b>Number</b>	<b>Company Name</b>
2010-01-01	61567	GULF SHRIMP LIMITED
From:	61453	612190 NB INC.
	50877	GULF SHRIMP LIMITED
2010-01-01	61569	HARBOUR GRACE SHRIMP COMPANY LIMITED
From:	47197	Harbour Grace Shrimp Company Limited
	42045	Zebit Fish Harvesters Inc.
2010-01-01	61568	ST. ALBAN'S INN LTD.
From:	26124	CROWN INVESTMENTS LIMITED
	37867	St. Alban's Inn Ltd.
2010-01-01	61571	TRACT CONSULTING INC.
From:	47003	N.W.D. HOLDINGS INC.
	39752	Tract Consultants Inc.
2010-01-04	61573	PENNECON ENERGY LTD.
From:	48798	INDUSTRIAL FABRICATORS LTD.
	47418	PENNECON ENERGY LTD.
	61426	PENNEY INDUSTRIAL FABRICATORS LTD.
2010-01-13	61635	MERCANTILE TRUST (2009) LIMITED
From:	59631	MERCANTILE TRUST (2009) LIMITED
	42592	MERCANTILE TRUST COMPANY LIMITED
2010-01-29	61775	MANKO LIMITED
From:	31106	Manko Ltd.
	20012	Tanorko Limited

THE NEWFOUNDLAND AND LABRADOR GAZETTE  
March 19, 2010

				<i>Corporations Act - Section 443</i>		
				<i>Extra-Provincial Registrations</i>		
				<i>For the Month of: January 2010</i>		
				<b>Date</b>	<b>Number</b>	<b>Company Name</b>
2010-01-31	61776	J & D POND HOLDINGS LTD.				
From:	43842	FIRST CHALLENGE LTD.				
	60071	J & D POND HOLDINGS LTD.				
Total Amalgamations: 8				2010-01-04	61574	HELICOPTER TRANSPORT SERVICES (CANADA) INC.
				2010-01-04	61572	IRONSHORE CANADA LTD.
				2010-01-04	61575	NATIONAL AND MARINE FIRE SERVICES INC.
				2010-01-05	61580	R.G. PACKMAN AND ASSOCIATES LTD.
				2010-01-06	61587	CANADIAN ROAD MANAGEMENT COMPANY
				2010-01-06	61586	MIDDLEFIELD LIMITED
				2010-01-12	61624	CAIN INSURANCE SERVICES LTD.
				2010-01-12	61625	RARE ELEMENT RESOURCES LTD.
				2010-01-13	61638	GOODLIFE KIDS FOUNDATION
				2010-01-13	61636	ISLAND PROJECTS INC.
				2010-01-13	61640	PATHWAY MINING 2010 INC.
				2010-01-13	61639	WCSB OIL & GAS ROYALTY INCOME 2010 MANAGEMENT CORP.
				2010-01-14	61644	CITI TRANSACTION SERVICES CANADA LTD.
				2010-01-15	61662	3240498 NOVA SCOTIA COMPANY
				2010-01-15	61649	COATES TRUCKING LTD.
				2010-01-15	61663	DNX CASTONGUAY INC.
				2010-01-15	61657	DUPUIS FINANCIAL INC.
				2010-01-15	61660	GE CANADA DOMINION LEASING COMPANY
				2010-01-15	61664	INDUSTRIELLE ALLIANCE, SERVICES PROFESSIONNELS INC.
				2010-01-15	61655	INDUSTRIAL ALLIANCE PROFESSIONAL SERVICES INC.
				2010-01-19	61687	RENT CHECK CORPORATION
				2010-01-20	61689	ROCK CONSTRUCTION & MINING INC.
				2010-01-20	61692	MAD MUMMER PRODUCTIONS INC.
				2010-01-20	61692	RENÉE'S GOURMET FOODS INC.
				2010-01-22	61706	SONCO GROUP INC.
				2010-01-25	61721	COASTAL REFRACTORIES SERVICES (2010) LTD.
				2010-01-26	61734	BIOSCRIPT PHARMACY LTD.
				2010-01-26	61730	MANSON CREEK RESOURCES LTD.
				2010-01-26	61731	MILLENNIUM INSURANCE CORPORATION
				2010-01-29	61769	BULLETPROOF SOLUTIONS INC.
				2010-01-29	61768	CANADIAN KROWN DEALERS INC.
Total Name Changes: 9				Total Registrations: 30		

THE NEWFOUNDLAND AND LABRADOR GAZETTE  
March 19, 2010

		<i>Corporations Act - Section 451</i>		60840			
		Extra-Provincial Name Changes		2010-01-29		From:	
		For the Month of: January 2010		52860		2010-01-29	
Number	From:	Company Name	Date	From:	Number	Company Name	Date
58677		G4S SECURE SOLUTIONS (CANADA) LTD./G4S SOLUTIONS DE SECURITE (CANADA) LTEE	2010-01-29	From:	61584	ENTERPRISE RENT-A-CAR CANADA LIMITED/ENTERPRISE LOCATION D'AUTOS CANADA LIMITEE	2010-01-05
2010-01-04	From:	G4S SECURITY SERVICES (CANADA) LTD./G4S SERVICES DE SECURITE (CANADA) LTEE	2010-01-29	From:	5154F	ENTERPRISE RENT-A-CAR CANADA LIMITED	2010-01-14
61627		CONOCOPHILLIPS CANADA RESOURCES CORP.			2776D	NATIONAL CAR RENTAL (CANADA) INC.	
2010-01-13	From:	CONOCOPHILLIPS CANADA RESOURCES INC.			61583	GROUPHEALTH GLOBAL BENEFIT SYSTEMS INC.	
60040		BHP BILLITON CANADA INC.			56534	GROUPHEALTH GLOBAL BENEFIT SYSTEMS INC.	
2010-01-14	From:	BHP BILLITON DIAMONDS INC.			61602	AMEC AMERICAS LIMITED/ AMEC AMÉRIQUES LIMITÉE	
4755F		CITICORP VENDOR FINANCE ULC			61601	NEWALTA CORPORATION	
2010-01-14	From:	CITICORP VENDOR FINANCE, LTD./ CITICORP FINANCE VENDEUR LTÉE			59577	NEWALTA CORPORATION	
4755F		CITICORP VENDOR FINANCE, LTD./ CITICORP FINANCE VENDEUR LTÉE			55154	UNITED FINANCIAL CORPORATION	
2010-01-14	From:	CITICORP VENDOR FINANCE, LTD./ CITICORP FINANCE VENDEUR LTÉE	2010-01-05	From:	61627	CONOCOPHILLIPS CANADA RESOURCES CORP.	
54421		FCR MANAGEMENT SERVICES CORPORATION			3819D	ConocoPhillips Canada (East) Limited	
2010-01-15	From:	FCB CORPORATION			6369F	CONOCOPHILLIPS CANADA RESOURCES CORP.	
55294		ALVAREZ & MARSAL CANADA INC.			61612	DIRECT ENERGY MARKETING LIMITED	
2010-01-22	From:	MCINTOSH & MORAWETZ INC.	2010-01-11	From:	61423	DIRECT ENERGY MARKETING LIMITED	
56754		UNIVERSAL POWER SOLUTIONS INC.			61617	DOHERTY & ASSOCIATES LTD.	
2010-01-25	From:	POWERWRIGHT ATLANTIC INC.	2010-01-11	From:			
57805		STATOIL CANADA LTD.					
2010-01-26	From:	STATOILHYDRO CANADA LTD.					
57642		LIFELINE SYSTEMS CANADA ULC					
2010-01-27	From:	LIFELINE SYSTEMS CANADA, INC.					
3705D		SAFWAY SERVICES CANADA, INC.					
2010-01-27	From:	THYSSENKRUPP SAFWAY, INC.					

Total Name Changes: 13

*Corporations Act - Section 294*  
Extra-Provincial Registrations for Amalgamation  
For the Month of: January 2010

Date	Number	Company Name	Date
2010-01-05	61584	ENTERPRISE RENT-A-CAR CANADA LIMITED/ENTERPRISE LOCATION D'AUTOS CANADA LIMITEE	2010-01-05
2010-01-14	5154F	ENTERPRISE RENT-A-CAR CANADA LIMITED	2010-01-14
2010-01-14	2776D	NATIONAL CAR RENTAL (CANADA) INC.	2010-01-14
2010-01-14	61583	GROUPHEALTH GLOBAL BENEFIT SYSTEMS INC.	2010-01-14
2010-01-14	56534	GROUPHEALTH GLOBAL BENEFIT SYSTEMS INC.	2010-01-14
2010-01-15	61602	AMEC AMERICAS LIMITED/ AMEC AMÉRIQUES LIMITÉE	2010-01-15
2010-01-22	61601	NEWALTA CORPORATION	2010-01-22
2010-01-22	59577	NEWALTA CORPORATION	2010-01-22
2010-01-25	55154	UNITED FINANCIAL CORPORATION	2010-01-25
2010-01-26	61627	CONOCOPHILLIPS CANADA RESOURCES CORP.	2010-01-26
2010-01-26	3819D	ConocoPhillips Canada (East) Limited	2010-01-26
2010-01-26	6369F	CONOCOPHILLIPS CANADA RESOURCES CORP.	2010-01-26
2010-01-27	61612	DIRECT ENERGY MARKETING LIMITED	2010-01-27
2010-01-27	61423	DIRECT ENERGY MARKETING LIMITED	2010-01-27
2010-01-27	61617	DOHERTY & ASSOCIATES LTD.	2010-01-27

THE NEWFOUNDLAND AND LABRADOR GAZETTE  
March 19, 2010

From:	58157	DOHERTY & ASSOCIATES LTD.	2010-01-27	61748	PHILIPS ELECTRONICS LTD
	3544D	MAGNA VISTA INVESTMENT MANAGEMENT LIMITED	From:	57642	PHILIPS ELECTRONIQUE LTEE
		GESTION DES INVESTISSEMENTS MAGNA VISTA LIMITÉE		57163	LIFELINE SYSTEMS CANADA ULC
2010-01-11	61619	GRYPHON INVESTMENT COUNSEL INC.	2010-01-29	61777	PHILIPS ELECTRONICS LTD
		CONSEILLERS EN PLACEMENTS GRYPHON INC.			PHILIPS ELECTRONIQUE LTEE
From:	1126D	GRYPHON INVESTMENT COUNSEL INC.	From:	4014D	GENERAL ELECTRIC CANADA INTERNATIONAL INC./
		CONSEILLERS EN PLACEMENTS GRYPHON INC.			GENERALE ELECTRIQUE DU CANADA INTERNATIONAL INC.
2010-01-11	61618	MERCK FROSST CANADA LTD./	2010-01-29	61772	GENERAL ELECTRIC CANADA INTERNATIONAL INC./ GENERALE ELECTRIQUE DU CANADA INTERNATIONAL INC.
		MERCK FROSST CANADA LTÉE	From:	59583	OLD DUTCH FOODS LTD
From:	3520D	MERCK FROSST CANADA LTD.			OLD DUTCH FOODS LTD.
		MERCK FROSST CANADA LTEE	Total Registrations for Amalgamation: 21		
2010-01-11	61620	WAYFARER INSURANCE BROKERS LIMITED	REGISTRAR OF COMPANIES		
		GARY STEEVES INSURANCE LTD.	Dean Doyle (Acting)		
From:	5141F	LANT & CO. INSURANCE BROKERS LTD.	Mar 19		
	4512F		<b>MINERAL ACT</b>		
2010-01-20	61690	IBM CANADA LIMITED	<b>NOTICE</b>		
		IBM CANADA LIMITÉE	Published in accordance with section 62 of CNLR 1143/96		
From:	59622	IBM CANADA LIMITED	under the <i>Mineral Act</i> , cM-12, RSNL 1990 as amended.		
		IBM CANADA LIMITÉE	Mineral rights to the following mineral licenses have		
2010-01-21	61699	AFFINIA CANADA ULC	reverted to the Crown:		
From:	51068	AFFINIA CANADA ULC	Mining Lease	164 (6835)	
2010-01-21	61700	CANADA BREAD COMPANY, LIMITED/	held by	Central Holdings Inc.	
		PAIN CANADA COMPAGNIE, LIMITEE	situate near	Lewis Pond area, central Newfoundland	
From:	6601F	Canada Bread Atlantic Limited	on map sheet	2D/14	
2010-01-25	61723	CARA OPERATIONS LIMITED/ENTREPRISES	Mining Lease	166(105869)	
		CARA LIMITEE	held by	Central Holdings Inc.	
From:	6784F	CARA OPERATIONS LIMITED/ ENTREPRISES	situate near	Borney Lake, central Newfoundland	
		CARA LIMITEE	on map sheet	2D/14	
			Note - No lands coming open for staking - will become full size claims in surrounding licence		
2010-01-26	61736	FIRST CHOICE HAIRCUTTERS LTD.	Mining Lease	167(105871)	
		FIRST CHOICE HAIRCUTTERS LTD.	held by	Central Holdings Inc.	
From:	6122F		situate near	Borney Lake, central Newfoundland	
			on map sheet	2D/14	
			Note - No lands coming open for staking - will become full size claims in surrounding licence		
2010-01-26	61735	MAGICUTS LTD.	The lands covered by this notice except for the lands within		
		MAGICUTS ZEE INC.	Exempt Mineral Lands, the Exempt Mineral Lands being		
From:	6208F	REGIS CUTS ACQUISITION CORPORATION	described in CNLR 1143/96 and NLR 71/98, 104/98,		
	6104F		97/200, 36/2001, 31/2004, 78/2006, 8/2008 and 28/2009		
2010-01-26	61733	STATOIL CANADA LTD.	outlined on 1:50 000 scale maps maintained by the		
From:	57805	STATOIL CANADA LTD.	Department of Natural Resources, will be open for staking		

after the hour of 9:00 AM on the 32<sup>nd</sup> clear day after the date of this publication.

JIM HINCHEY, P.Geo.  
Manager - Mineral Rights

File # : 759: 060, 062, 063

March 19

---

**CITY OF MT. PEARL ACT**



**NOTICE OF APPROVAL  
AMENDMENT TO TAXI REGULATIONS**

TAKE NOTICE that the Mount Pearl City Council has amended its Taxi Regulations to reflect the following change in fee structure:

Taxi Vehicle License Fee (original):  
Increase fee from \$45 to \$60

Taxi Vehicle License Fee (renewal):  
Increase fee from \$45 to \$60

Vehicle Transfer Fee: Increase fee from  
\$20 to \$35

These Regulations were amended by Council under the authority of Sections 39 and 229 of the *City of Mount Pearl Act* during the public council meeting of February 23, 2010.

All persons are hereby required to take notice that these Regulations may be viewed at City Hall and that any person who wishes may obtain a copy.

These regulations shall come into effect on April 1, 2010.

GERARD LEWIS, MMC  
Chief Administrative Officer

P. O. # 52520

March 19

---

**MOUNT PEARL CIVIC NUMBERING  
REGULATIONS 2010  
NOTICE OF ADOPTION**

Take notice that the Mount Pearl City Council has adopted the City of Mount Pearl Civic Numbering Regulations 2010 made and adopted by the City Council pursuant to the City of Mount Pearl Act on March 9, 2010.

The purpose of the amendment is to regulate the civic numbering of buildings within the City of Mount Pearl.

The Regulations come into effect on April 5, 2010. Any person who wishes to view the Regulations may do so at the office of the Chief Administrative Officer or by visiting the City's website [www.mountpearl.ca](http://www.mountpearl.ca)

CITY OF MOUNT PEARL  
Gerard Lewis , Chief Administrative Officer

Mar 19

---

**URBAN AND RURAL PLANNING ACT**

**NOTICE OF REGISTRATION  
ST. JOHN'S MUNICIPAL PLAN  
AMENDMENT NO. 79, 2009  
AND  
ST. JOHN'S DEVELOPMENT REGULATIONS  
AMENDMENT NUMBER 474, 2009**

Take notice that the St. John's Municipal Plan Amendment Number 79, 2009 and St. John's Development Regulations Amendment No. 474, 2009, adopted on the 4<sup>th</sup> day of January, 2010, and approved on the 1<sup>st</sup> day of March, 2010, have been registered by the Minister of Municipal Affairs.

In general terms, the purpose of the Municipal Plan Amendment No. 79, 2009 is to redesignate land off Silverton Street and Cemetery Lane from the Open Space District to the Residential Low Density District.

In general terms, the purpose of the Development Regulations Amendment Number 474, 2009 is to rezone land off Silverton Street and Cemetery Lane from the Open Space (O) Zone to the Residential Low Density (R1) Zone.

These amendments come into effect on the day that this notice is published in *The Newfoundland and Labrador Gazette*. Anyone who wishes to inspect a copy of the amendments may do so at the Department of Planning, 3<sup>rd</sup> Floor, St. John's City Hall during regular business hours (9 a.m. to 4:30 p.m. - Monday to Friday).

CITY OF ST. JOHN'S  
Cheryl Kearney, Department of Planning

Mar 19

---

**LANDS ACT**

**NOTICE OF INTENT  
LANDS ACT, c36, SNL 1991**

Notice is hereby given that MARY'S HARBOUR FISHERMEN'S COMMITTEE of Mary's Harbour intends to apply to the Department of Environment and Conservation, two months from the publication of this Notice, to acquire title, pursuant to Section 7(2) of the said Act, to that piece of Crown Land situated within fifteen (15) metres of the waters of Mary's Harbour, in the Electoral District of Cartwright-Lanse au Clair for the



purpose of Boat Haul Up Area and being more particularly described as follows:

*Bounded on the North by Keith Hardy  
for a distance of 45m;  
Bounded on the East by Open Water  
for a distance of 30m;  
Bounded on the South by LFUS Co. Ltd.  
for a distance of 45m;  
Bounded on the West by Road  
for a distance of 6m;  
and containing an area of  
approximately 1350 square metres.*

Any person wishing to object to the application must file the objection, in writing, within one month from the publication of this notice, with reasons for it, to the Minister of Environment and Conservation, and mail to the nearest Regional Lands Office:

(Choose Area Applicable)

c/o Eastern Regional Lands Office, P. O. Box 8700, 5 Mews Place, St. John's, NL, A1B 4J6.

c/o Central Regional Lands Office, P. O. Box 2222, Gander, NL, A1V 2N9.

c/o Western Regional Lands Office, P. O. Box 2006, Noton Building, Corner Brook, NL, A2H 6J8.

c/o Labrador Regional Lands Office, P. O. Box 3014, Station "B", Happy Valley-Goose Bay, NL A0P 1E0.

For further information on the proposed application, please contact ALTON RUMBOLT Telephone (709) 921-6301.

Mar 19

#### NOTICE OF INTENT

##### **LANDS ACT, c36, SNL 1991**

Notice is hereby given that LABRADOR FISHERMEN'S UNION SHRIMP COMPANY LIMITED of L'anse au Loup, Labrador intends to apply to the Department of Environment and Conservation, two months from the publication of this Notice, to acquire title, pursuant to Section 7(2) of the said Act, to that piece of Crown Land situated within fifteen (15) metres of the waters of Mary's Harbour, Labrador, in the Electoral District of Cartwright, L'anse au Clair for the purpose of erection of a Crab Processing Facility and being more particularly described as follows:

*Bounded on the North by Crown Land used  
by Fishermen's Committee  
for a distance of 51.8m;  
Bounded on the East by Community Road  
to Town Center  
for a distance of 94.5m;  
Bounded on the South by Government/Plant Wharf  
for a distance of 51.8m  
Bounded on the West by Harbour  
for a distance of 94.5m;*

*and containing an area of  
approximately 4,800 square metres.*

Any person wishing to object to the application must file the objection, in writing, within one month from the publication of this notice, with reasons for it, to the Minister of Environment and Conservation, and mail to the nearest Regional Lands Office:

(Choose Area Applicable)

c/o Eastern Regional Lands Office, P. O. Box 8700, 5 Mews Place, St. John's, NL, A1B 4J6.

c/o Central Regional Lands Office, P. O. Box 2222, Gander, NL, A1V 2N9.

c/o Western Regional Lands Office, P. O. Box 2006, Noton Building, Corner Brook, NL, A2H 6J8.

c/o Labrador Regional Lands Office, P. O. Box 3014, Station "B", Happy Valley-Goose Bay, NL A0P 1E0.

For further information on the proposed application, please contact KEN FOWLER Telephone (709) 927-5816.

Mar 19

#### NOTICE OF INTENT

##### **LANDS ACT, c36, SNL 1991**

Notice is hereby given that IRON ISLE ENERGY INC. of St. John's, Newfoundland and Labrador intends to apply to the Department of Environment and Conservation, two months from the publication of this Notice, to acquire title, pursuant to Section 7(2) (a) of the said Act, to that piece of Crown Land situated within fifteen (15) metres of the waters of Conception Bay South along the shorelines of Bell Island, in the Electoral District of Conception Bay East-Bell Island (the "Lands") for the purpose of constructing (a) a wharf, mooring/marine.vessel facility, and a tug basin on parcel 1, and (b) a hydrocarbon storage facility on parcels 2, 3, and 4, in compliance with the international Ship and Port Facility Security Code (ISPS Code). The Lands are located along the shoreline of Bell Island, and are described below in 1 Parcels 1 to 4 and delineated in Schedule A and being more particularly described as follows:

#### SCHEDULE A

##### **Parcel 1**

*Bounded on the Southeast by the waters of  
Conception Bay South  
for a distance of 1,300m;  
Bounded on the Southwest by Crown land  
formerly known as DOSCO Lands  
for a distance of 15m;  
Bounded on the Northwest by Crown Land  
formerly known as DOSCO Lands  
for a distance of 1,300m;  
Bounded on the Northeast by Crown Land  
formerly known as DOSCO Lands  
for a distance of 15m;*

*And containing an area of  
approximately 1.95 hectares.*

**Parcel 2**

*Bounded on the Northwest by the waters of  
Conception Bay South  
for a distance of 1,400m;  
Bounded on the Northeast by Crown land  
formerly known as DOSCO Lands  
for a distance of 15m;  
Bounded on the Southeast by Crown Land  
formerly known as DOSCO Lands  
for a distance of 1,400m;  
Bounded on the Southwest by Crown Land  
formerly known as DOSCO Lands  
for a distance of 15m;  
And containing an area of  
approximately 2.1 hectares.*

**Parcel 3**

*Bounded on the Northwest by the waters of  
Conception Bay South  
for a distance of 3,300m;  
Bounded on the Northeast by Crown land  
formerly known as DOSCO Lands  
for a distance of 15m;  
Bounded on the Southeast by Crown Land  
formerly known as DOSCO Lands  
for a distance of 3,300m;  
Bounded on the Southwest by Crown Land  
formerly known as DOSCO Lands  
for a distance of 15m;  
And containing an area of  
approximately 4.95 hectares.*

**Parcel 4**

*Bounded on the Northwest by the waters of  
Conception Bay South  
for a distance of 1,200m;  
Bounded on the Northeast by Crown land  
formerly known as DOSCO Lands  
for a distance of 15m;  
Bounded on the Southeast by Crown Land  
formerly known as DOSCO Lands  
for a distance of 1,200m  
Bounded on the Southwest by Crown Land  
formerly known as DOSCO Lands  
for a distance of 15m;  
And containing an area of  
approximately 1.9 hectares.*

Any person wishing to object to the application must file the objection, in writing, within one month from the

publication of this notice, with reasons for it, to the Minister of Environment and Conservation, and mail to the nearest Regional Lands Office:

(Choose Area Applicable)

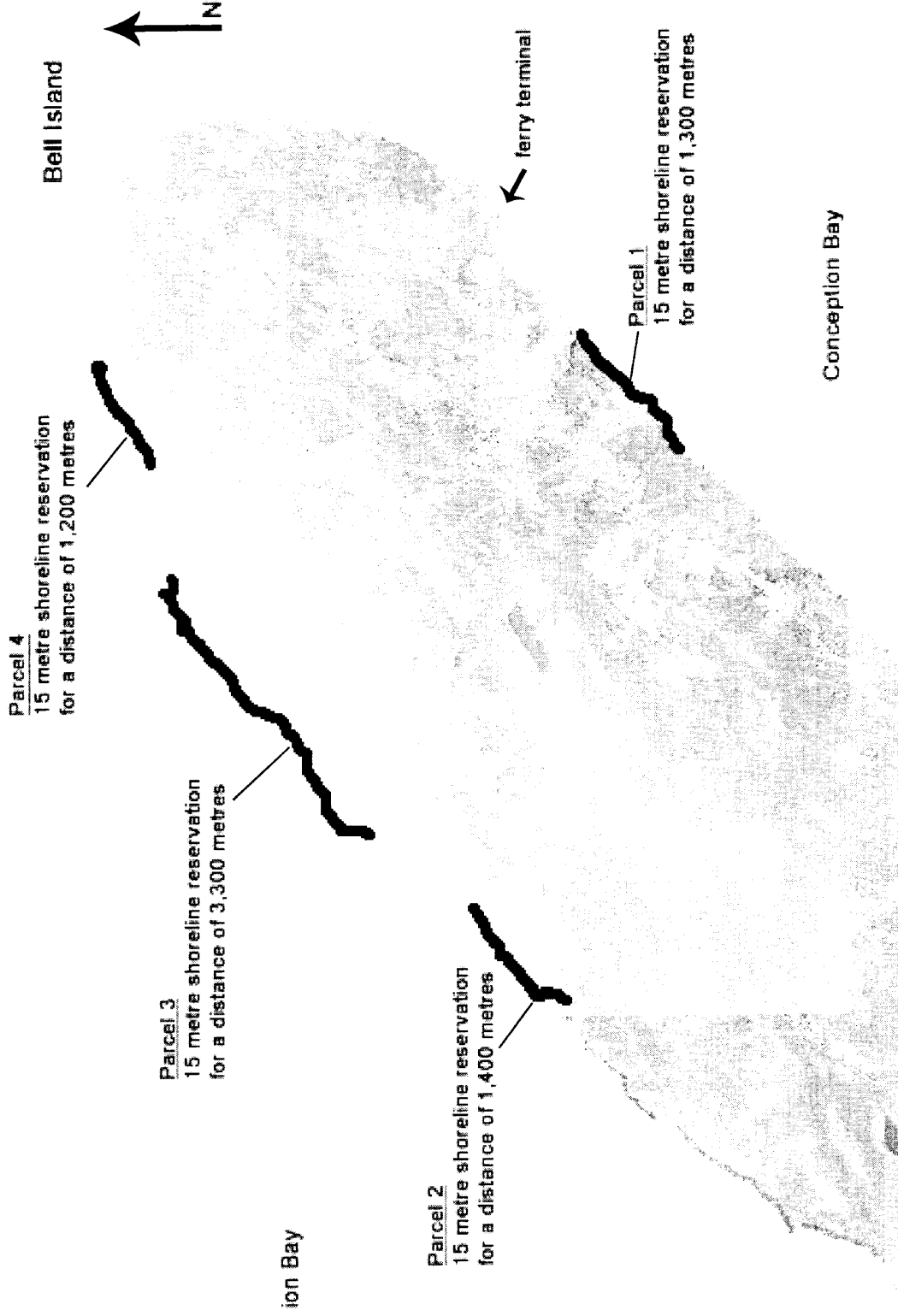
c/o Eastern Regional Lands Office, P. O. Box 8700, 5 Mews Place, St. John's, NL, A1B 4J6.

c/o Central Regional Lands Office, P. O. Box 2222, Gander, NL, A1V 2N9.

c/o Western Regional Lands Office, P. O. Box 2006, Noton Building, Corner Brook, NL, A2H 6J8.

c/o Labrador Regional Lands Office, P. O. Box 3014, Station "B", Happy Valley-Goose Bay, NL A0P 1E0.

For further information on the proposed application, please contact IRON ISLE ENERGY INC. Telephone (347) 949-2716.



**QUIETING OF TITLES ACT**

BENSON-MYLES PLC.  
Solicitors for the Applicant  
PER: Colin P. Sullivan

**2009 01T 3565  
IN THE SUPREME COURT OF  
NEWFOUNDLAND AND LABRADOR  
TRIAL DIVISION**

Notice of Application under the *Quieting of Titles Act*, cQ-3 of the RSNL 1990 and amendments thereto

IN THE MATTER OF an Application of Brookfield Asset Management Inc. a body corporate, incorporated pursuant to the laws of the Province of Newfoundland and Labrador,

AND

IN THE MATTER OF the *Quieting of Titles Act*, c Q-3, of the RSNL 1990, and amendments thereto

AND

IN THE MATTER OF a piece or parcel of land situate and being Octagon Pond in the Town of Paradise in the Province of Newfoundland and Labrador

Notice of Application under the *Quieting of Titles Act*, c. Q-3 of the RSNL 1990 and amendments thereto

NOTICE IS HEREBY GIVEN to all parties that Brookfield Asset Management has applied to the Supreme Court of Newfoundland and Labrador, Trial Division, to have the title to ALL THAT piece or parcel of land situate and being at Octagon Pond, in the Town of Paradise, in the Province of Newfoundland and Labrador and being more particularly described in the Schedule hereunto attached and marked "A" of which the said Brookfield Asset Management claims on their behalf to be the owner investigated and requests a declaration that the said Brookfield Asset Management is the legal and beneficial owner in possession and the said Court having ordered that Notice of the said Application be published as required by the above named Act.

All persons having title adverse to the said title claimed by Brookfield Asset Management shall file in the Registry of the Supreme Court of Newfoundland and Labrador particulars of such adverse claim and serve the same together with an Affidavit verifying the same on the undersigned Solicitors for the Applicant on or before the 9<sup>th</sup> day of April, 2010, after which date no party having any claim shall be permitted to file the same or to be heard except by special leave of the Court and subject to such conditions as the Court may deem just.

All such adverse claims shall then be investigated in such manner as the said Supreme Court may direct.

DATED at St. John's, this 5<sup>th</sup> day of March, 2010.

ADDRESS FOR SERVICE  
Suite 900 Atlantic Place,  
215 Water Street, P.O. Box 1538  
St. John's, NL, A1C 5N8  
Tel: (708) 570-7274  
Fax: (709) 579-2647

**SCHEDULE "A"**

**HAWCO KING RENOUF LTD  
SURVEYS & ENGINEERING CONSULTANTS**

**ENGINEERS – SURVEYORS - HYDROGRAPHERS**

**SCHEDULE A**

July 2007

Job No. 07-069

**DESCRIPTION**

Topsail Highway/McNamara Drive Paradise, NL

ALL that piece or parcel of land situate and being on the western side of McNamara Drive, and on the southern side of Topsail Highway at Paradise, Newfoundland and Labrador, in the electoral district of Conception Bay East-Bell Island, and being bounded and abutted as follows, that is to say:

Beginning at a point on the southern side of Topsail Highway at Paradise, said point having coordinates of North 5 265 443.618 metres and East 313 988.110 metres in the Modified Three Degree Transverse Mercator Projection for the province of Newfoundland and Labrador, Zone One;

Thence running along the southern side of Topsail Highway, South 66°55'42" East, 117.503 metres;

Thence turning and running along the land of Town of Paradise, roll 157 frame 1359, South 53°12'42" West, 111.110 metres;

Thence turning and running along the land of Town of Paradise, roll 157 frame 1359 and along the land of Acan Windows Inc. roll 658 frame 1787, South 63°02'00" East, 273.444 metres;

Thence turning and running along the land of Capital Ready Mix Ltd. Registration No. 104215, Registration No. 116978, South 26°58'00" West, 23,500 metres; thence South 20°17'00" West, 28.800 metres; thence South 12°22'00" West, 43.550 metres; thence South 5°30'00" East, 200.904 metres, thence North 84°00'00" East, 125.359 metres;

Thence turning and running along the land of Town of Paradise, Registration No. 146305, along the arc of a counter-clockwise curve 25.284 metres long with a radius of 21.660 metres on a chord bearing and distance of North 52°12'02" East, 23.873 metres; thence North 19°20'00" East, 83.790 metres; thence North 20°12'00" East, 168.610 metres; thence North 24°16'00" West, 12.488 metres;

Thence turning and running along other land of Acan Windows Inc. roll 658 frame 1787, along the arc of a counter-clockwise curve 67.500 metres long with a radius of 96.656 metres on a chord bearing and distance of North 8°39'00" West, 66.170 metres;

Thence turning and running along the western side of McNamara Drive, South 29°27'12" East, 96.008 metres;  
Thence turning and running along the land of H.M. in Right of Newfoundland (former Canadian National Railway), South 19°38'00" West, 436.880 metres;

Thence turning and running along the land of Newfoundland and Labrador Housing Corporation, North 82°22'00" West, 271.843 metres;

Thence turning and running along the shoreline of Octagon Pond in a generally northerly direction, 727 metres ± a straight line bearing and distance of North 11°59'22" West, 600.099 metres;

Thence turning and running along the land of Ernest White & Denise Edison, roll 2707 frame 2334, North 25°21'45" East, 63.398 metres, more or less, to the point of commencement, and containing an area of 11.800 hectares, as shown on the attached plan, Job No. 07-069 dated July 2007.

There is a walking trail running along the western boundary, as shown on the attached plan.

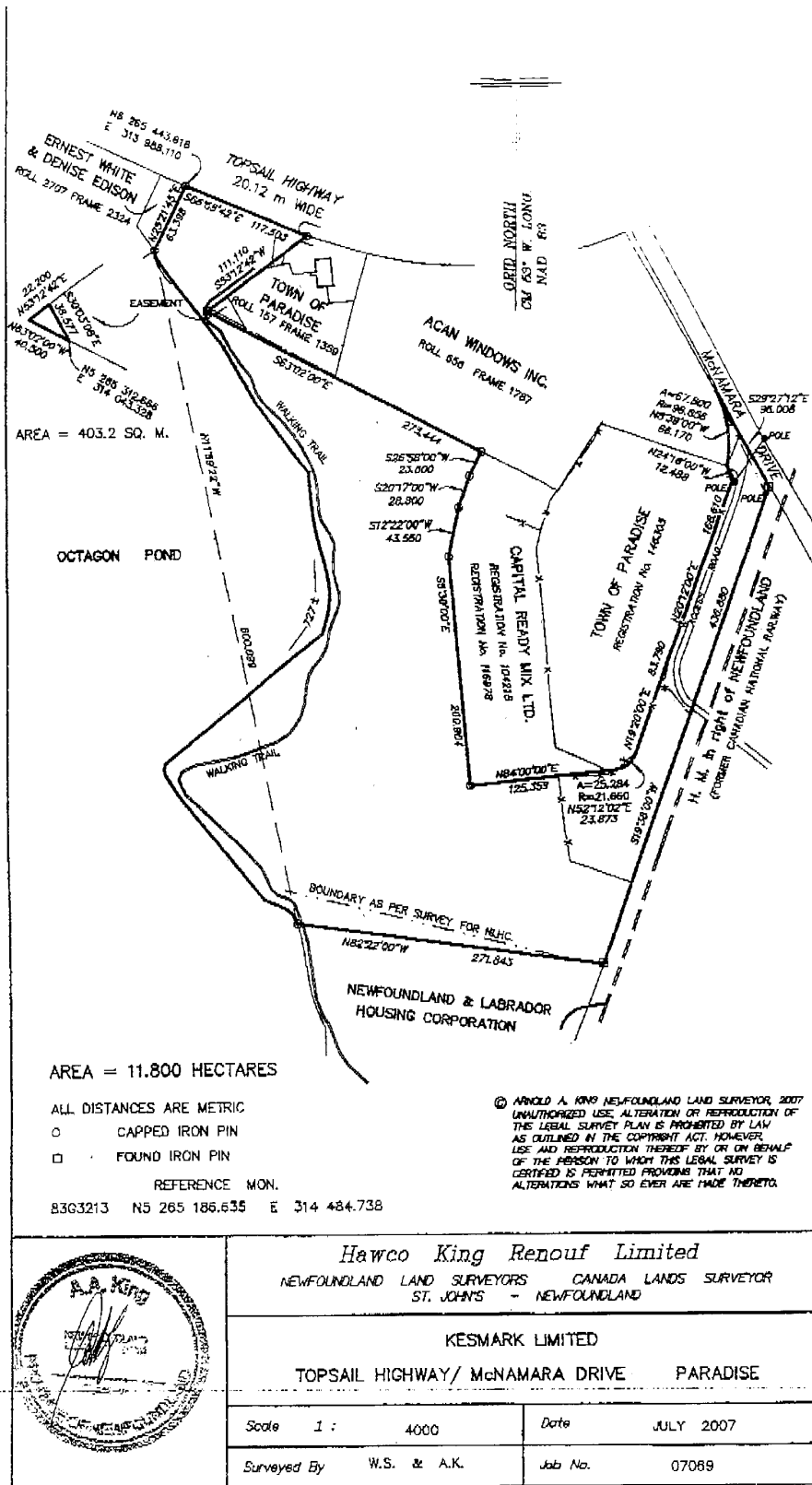
TOGETHER, with an easement over property of Town of Paradise, more particularly described as follows:

BEGINNING at a point south of Topsail Highway at Paradise, said point having coordinates of North 5 265 312.666 metres and East 314 043.328 metres in the Modified Three Degree Transverse Mercator Projection for the province of Newfoundland and Labrador, Zone One;

Thence running along the land of Kesmark Limited, North 63°02'00" West, 40.500 metres; thence North 53°12'42" East, 22.200 metres;

Thence turning and running along the land of Town of Paradise, roll 157 frame 1359, South 30°03'08" East, 36.577 metres, more or less, to the point of commencement, and containing an area of 403.2 square metres, as shown on the attached plan, Job No. 07-069 dated July 2007.

All bearings are Grid bearings referred to Grid North. All distances are horizontal ground distances.



AREA = 403.2 SQ. M.

AREA = 11.800 HECTARES

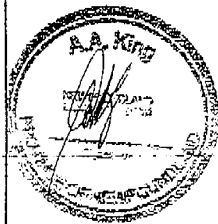
ALL DISTANCES ARE METRIC

- CAPPED IRON PIN
- FOUND IRON PIN

REFERENCE MON.

B3G3213 N5 265 186.635 E 314 484.738

© ARNOLD A KING NEWFOUNDLAND LAND SURVEYOR, 2007  
 UNAUTHORIZED USE, ALTERATION OR REPRODUCTION OF  
 THIS LEGAL SURVEY PLAN IS PROHIBITED BY LAW  
 AS OUTLINED IN THE COPYRIGHT ACT. HOWEVER,  
 USE AND REPRODUCTION THEREOF BY OR ON BEHALF  
 OF THE PERSON TO WHOM THIS LEGAL SURVEY IS  
 CERTIFIED IS PERMITTED PROVIDED THAT NO  
 ALTERATIONS WHAT SO EVER ARE MADE THEREON.



*Hawco King Renouf Limited*  
 NEWFOUNDLAND LAND SURVEYORS CANADA LANDS SURVEYOR  
 ST. JOHN'S - NEWFOUNDLAND

KESMARK LIMITED

TOPSAIL HIGHWAY/ McNAMARA DRIVE PARADISE

Scale	1 : 4000	Date	JULY 2007
Surveyed By	W.S. & A.K.	Job No.	07069



# THE NEWFOUNDLAND AND LABRADOR GAZETTE

## PART II

### SUBORDINATE LEGISLATION FILED UNDER THE STATUTES AND SUBORDINATE LEGISLATION ACT

---

Vol. 85

ST. JOHN'S, FRIDAY, MARCH 19, 2010

No. 11

---

### NEWFOUNDLAND AND LABRADOR REGULATIONS

NLR 13/10  
NLR 14/10



**NEWFOUNDLAND AND LABRADOR  
REGULATION 13/10**

*Interim Development Regulations (Amendment)*  
under the  
*Urban and Rural Planning Act, 2000*

*(Filed March 16, 2010)*

Under the authority of section 34 of the *Urban and Rural Planning Act, 2000*, I make the following regulations.

Dated at St. John's, March 10, 2010.

Tom Hedderson  
Minister of Municipal Affairs (A)

**REGULATIONS**

*Analysis*

1. Sch. Amdt.

NLR 137/03  
as amended

**1. The Schedule to the *Interim Development Regulations* is amended by deleting the reference "Cape Broyle Municipal Planning Area".**

©Earl G. Tucker, Queen's Printer





## NEWFOUNDLAND AND LABRADOR REGULATION 14/10

*Milk Regulations, 1998 (Amendment)*  
under the  
*Milk Scheme, 1998*  
and the  
*Natural Products Marketing Act*

*(Filed March 18, 2010)*

Under the authority of section 8 of the *Milk Scheme, 1998* and the *Natural Products Marketing Act*, the Dairy Farmers of Newfoundland and Labrador make the following regulations.

Dated at St. John's, February 18, 2010.

Harry Burden  
Executive Director  
Dairy Farmers of Newfoundland and Labrador

### REGULATIONS

#### *Analysis*

1. S.16 Amdt.  
New entrants

NLR 69/98  
as amended

**1. Subsection 16(3) of the *Milk Regulations, 1998* is repealed and the following substituted:**

- (3) A person who applies under subsection (1) shall

- (a) be a Canadian citizen;
- (b) be 19 years of age or more;
- (c) provide to the DFNL a business plan, for a period of time considered necessary by the DFNL, that demonstrates to the satisfaction of the DFNL that the proposed dairy operation is financially and otherwise viable and sustainable; and
- (d) intend to establish a new and separate dairy operation that includes all of the following:
  - (i) land,
  - (ii) one or more buildings,
  - (iii) equipment, and
  - (iv) a daily milk quota of not fewer than 900 litres.

**©Earl G. Tucker, Queen's Printer**

## Index

### PART I

City of Mount Pearl Act– Notice .....	88
Corporations Act – Notices.....	81
Lands Act – Notices.....	88
Mineral Act – Notice .....	87
Quieting of Titles Act– Notice.....	92
Urban and Rural Planning Act– Notice .....	88

### PART II

#### CONTINUING INDEX OF SUBORDINATE LEGISLATION

Title of Act and Subordinate Legislation made thereunder	CNLR or NL Reg.	Amendment	NL Gazette Date & Page No.
<b>Natural Products Marketing Act and the Milk Scheme, 1998</b>			
Milk Regulations, 1998 (Amdt)	NLR 14/10	Amends NLR 69/98, S. 16 Amdt.	Mar. 19/10 p.89
<b>Urban and Rural Planning Act</b>			
Interim Development Regulations (Amdt)	NLR 13/10	Amends NLR 137/03 Sch. Amdt.	Mar. 19/10 p. 87

*The Newfoundland and Labrador Gazette* is published from the office of Earl G. Tucker, Queen's Printer.

Copy for publication must be received before **Friday, 4:30 p.m.**, seven days before publication, to ensure inclusion in next issue.

Advertisements should be typewritten or printed legibly, separate from covering letter. Number of insertions required must be stated and the names of all signing officers typewritten or printed.

Copy may be mailed to the address below, faxed to (709) 729-1900 or emailed to [queensprinter@gov.nl.ca](mailto:queensprinter@gov.nl.ca).

Advertising rates are available upon request. Subscription rate for *The Newfoundland and Labrador Gazette* is \$125.00 for 52 weeks plus applicable tax (\$131.25). Weekly issues of \$3.00 per copy, plus tax payable in advance.

All cheques, money orders, etc., should be made payable to THE NEWFOUNDLAND EXCHEQUER ACCOUNT and all correspondence should be addressed to: Office of the Queen's Printer, P. O. Box 8700, Ground Floor, East Block, Confederation Building, St. John's, NL A1B 4J6. Telephone (709) 729-3649. Fax: (709) 729-1900.

Web Site: <http://www.gs.gov.nl.ca/gs/oqp>

**Place your order by contacting:  
Office of The Queen's Printer  
Confederation Building, East Block  
St. John's, NL A1B 4J6  
Telephone: (709) 729-3649 Fax: (709) 729-1900  
email: [queensprinter@gov.nl.ca](mailto:queensprinter@gov.nl.ca)**

**Government Information Product  
Publication Rate Mail  
G.S.T. # R107442683**

**All requests for Subscription and Legislation MUST be prepaid.**