



# THE NEWFOUNDLAND AND LABRADOR GAZETTE

## PART I

PUBLISHED BY AUTHORITY

Vol. 85

ST. JOHN'S, FRIDAY, MAY 21, 2010

No. 20

### CITY OF CORNER BROOK ACT

#### THE CITY OF CORNER BROOK TRAFFIC REGULATIONS

Pursuant to the powers vested in it under Section 203 of the *City of Corner Brook Act*, RSNL 1990, cC-15, as amended, Section 189 of the *Highway Traffic Act*, RSNL 1990, H-3, as amended, (a) delegation(s) of power by the Minister of Transportation and Works, and all other powers it enabling, the Corner Brook City Council repealed and replaced The City of Corner Brook Traffic Regulations 1992. The new regulation may be cited as The City of Corner Brook Traffic Regulations.

Any person(s) who wishes to view a copy of the regulation may do so at the City Clerk's Office, Corner Brook City Hall during regular business hours.

These regulations will have effect from the date of publication in *The Newfoundland and Labrador Gazette*.

CITY OF CORNER BROOK  
Marina Redmond City Clerk

P.O. # 32159

May 21

#### CITY OF CORNER BROOK COMMERCIAL MOTOR VEHICLE REGULATIONS

Pursuant to the powers vested in it under Section 203, 254, 280.1, 280.2 and 290.4 of the *City of Corner Brook Act*,

RSNL 1990, cC-15, as amended, Section 189 of the *Highway Traffic Act*, RSNL 1990, H-3, as amended,

- (a) delegation(s) of power by the Minister of Transportation and Works, and all other powers it enabling, the Corner Brook City Council repealed and replaced The Commercial Motor Vehicle Regulation. The new regulation may be cited as The City of Corner Brook Commercial Motor Vehicle Regulations.

Any person(s) who wishes to view a copy of the regulation may do so at the City Clerk's Office, Corner Brook City Hall during regular business hours.

These regulations will have effect from the date of publication in *The Newfoundland and Labrador Gazette*.

CITY OF CORNER BROOK  
Marina Redmond City Clerk

P.O. # 32159

May 21

#### CITY OF CORNER BROOK PARKING METER REGULATIONS

Pursuant to the powers vested in it under Section 203, of the *City of Corner Brook Act*, RSNL 1990, cC-15, as amended, Section 189 of the *Highway Traffic Act*, RSNL 1990, H-3, as amended, (a) delegation(s) of power by the Minister of Transportation and Works, and all other powers it enabling, the Corner Brook City Council repealed and replaced The City of Corner Brook Parking Meter By-law.

THE NEWFOUNDLAND AND LABRADOR GAZETTE  
May 21, 2010

The new regulation may be cited as The City of Corner Brook Parking Meter Regulations.

Any person(s) who wishes to view a copy of the regulation may do so at the City Clerk's Office, Corner Brook City. These regulations will have effect from the date of publication in *The Newfoundland and Labrador Gazette*.

CITY OF CORNER BROOK  
Marina Redmond City Clerk

P.O. # 32159

May 21

			2010-03-04	61995	Atlantis Developments Inc.
			2010-03-04	61996	Time and Tide Adventure Tours Inc.
			2010-03-04	61997	61997 NEWFOUNDLAND & LABRADOR INC.
			2010-03-05	61998	61998 NEWFOUNDLAND & LABRADOR INC.
			2010-03-05	61999	Grancor Contracting Ltd
			2010-03-05	62000	62000 NEWFOUNDLAND & LABRADOR CORP
			2010-03-05	62001	Long Harbour Cleaning & Maintenance Ltd.
			2010-03-05	62002	62002 NEWFOUNDLAND & LABRADOR LTD.
			2010-03-08	62019	62019 NEWFOUNDLAND & LABRADOR INC.
			2010-03-08	62012	CCB INVESTMENTS LIMITED
			2010-03-08	62016	COAST OF BAYS WASTE MANAGEMENT AUTHORITY INC.
			2010-03-08	62013	M.J. WALL CONSTRUCTION LTD
			2010-03-08	62017	METRO THEATRE ALLIANCE INC.
			2010-03-08	62003	Jasbir Gill, MD, Professional Medical Corporation
			2010-03-08	62004	Jimmy Pratt Foundation Inc.
			2010-03-08	62005	VanGO Productions Inc.
			2010-03-08	62006	Insight Consulting Inc.
			2010-03-09	62026	2011 TELUS CUP HOST COMMITTEE INC.
			2010-03-09	62024	CENTRAL COMPUTERS SALES & SERVICE LTD.
			2010-03-09	62033	CUSTOM RENOVATORS LTD.
			2010-03-09	62028	DR. KHAWER SAEED PROFESSIONAL MEDICAL CORPORATION
			2010-03-09	62021	E.B. CONSULTING LIMITED
			2010-03-09	62022	EASTCOAST WELDING & FABRICATION LTD.
			2010-03-09	62023	JACE PLUMBING & HEATING LTD
			2010-03-09	62007	Darlene Russell Legal Services PLC Inc.
			2010-03-09	62011	62011 NEWFOUNDLAND & LABRADOR INC
			2010-03-10	62040	BTG CONSULTING INC.
			2010-03-10	62037	CJAES HOLDINGS INC.
			2010-03-10	62035	GEORGE STEWART SERVICES INC.
			2010-03-10	62036	HILLIER'S GARAGE 2010 INC
			2010-03-10	62034	INNU NAMESU LTD.
			2010-03-10	62039	SHINGLE MAX LIMITED
			2010-03-10	62041	THE BODY KNEADS THERAPISTS INC.
			2010-03-10	62042	TOLT HOLDINGS INC.
			2010-03-10	62031	Jenniker Holdings Inc.
			2010-03-11	62044	A & A EXCAVATING SERVICES LTD.
			2010-03-11	62045	IDPA NEWFOUNDLAND & LABRADOR INC.
			2010-03-11	62043	Parco Investments Inc.
			2010-03-12	62067	FILTRATION & INSTRUMENTATION SERVICES INC.
			2010-03-12	62066	J & A CONTRACTING INC.
			2010-03-12	62068	STICKS & STONES CONTRACTING LIMITED
			2010-03-03	61979	P. W. B. Enterprises Inc.
			2010-03-04	61993	Marquise Heavy Equipment Ltd.

**CORPORATIONS ACT**

*Corporations Act - Section 393*

**Local Incorporations**

**For the Month of: March 2010**

Date	Number	Company Name			
2010-03-01	61968	61968 NEWFOUNDLAND AND LABRADOR INC.	2010-03-08	62013	M.J. WALL CONSTRUCTION LTD
2010-03-01	61969	COLLIER'S CABINETRY LIMITED	2010-03-08	62017	METRO THEATRE ALLIANCE INC.
2010-03-01	61971	FERMEUSE TRAIL COMMITTEE INC.	2010-03-08	62003	Jasbir Gill, MD, Professional Medical Corporation
2010-03-01	61967	FIDDLERS GREEN SOD INC.	2010-03-08	62004	Jimmy Pratt Foundation Inc.
2010-03-01	61970	LAKE MELVILLE DOG PARK ASSOCIATION INC.	2010-03-08	62005	VanGO Productions Inc.
2010-03-01	61974	THE CHURCH BY THE SEA INC.	2010-03-09	62006	Insight Consulting Inc.
2010-03-01	61953	Will Build Construction Inc.	2010-03-09	62026	2011 TELUS CUP HOST COMMITTEE INC.
2010-03-01	61958	Labrador-Menihek Resources Inc.	2010-03-09	62024	CENTRAL COMPUTERS SALES & SERVICE LTD.
2010-03-01	61962	RUGGED BEAUTY BOAT TOURS INC.	2010-03-09	62033	CUSTOM RENOVATORS LTD.
2010-03-01	61963	Saputsinik Investigation and Security Services Ltd.	2010-03-09	62028	DR. KHAWER SAEED PROFESSIONAL MEDICAL CORPORATION
2010-03-01	61964	GUNSON HOLDINGS LIMITED	2010-03-09	62021	E.B. CONSULTING LIMITED
2010-03-01	61966	KANTUAT MINERALS CORPORATION	2010-03-09	62022	EASTCOAST WELDING & FABRICATION LTD.
2010-03-02	61981	61981 NEWFOUNDLAND & LABRADOR INC.	2010-03-09	62023	JACE PLUMBING & HEATING LTD
2010-03-02	61980	HEALTHY HOMES INC.	2010-03-09	62007	Darlene Russell Legal Services PLC Inc.
2010-03-02	61978	STONE ROGUES INC.	2010-03-09	62011	62011 NEWFOUNDLAND & LABRADOR INC
2010-03-02	61977	Acadian Construction Limited	2010-03-10	62040	BTG CONSULTING INC.
2010-03-03	61984	61984 NEWFOUNDLAND AND LABRADOR LIMITED	2010-03-10	62037	CJAES HOLDINGS INC.
2010-03-03	61985	DEZEEUW INVESTMENTS LIMITED	2010-03-10	62035	GEORGE STEWART SERVICES INC.
2010-03-03	61988	HICKEY'S TRUCKING & CONTRACTING LTD.	2010-03-10	62036	HILLIER'S GARAGE 2010 INC
2010-03-03	61987	ISLAND RACING ASSOCIATION INCORPORATED	2010-03-10	62034	INNU NAMESU LTD.
2010-03-03	61989	NON-STOP CONSTRUCTION INC.	2010-03-10	62039	SHINGLE MAX LIMITED
2010-03-03	61982	SAME HAIRCUT PRODUCTIONS INC.	2010-03-10	62041	THE BODY KNEADS THERAPISTS INC.
2010-03-03	61994	SOUTH RIVER VIEW LIMITED	2010-03-10	62042	TOLT HOLDINGS INC.
2010-03-03	61986	STONE MASONRY & HEATER BUILDERS LTD.	2010-03-10	62031	Jenniker Holdings Inc.
2010-03-03	61983	TOP TO BOTTOM RENOVATIONS LTD.	2010-03-11	62044	A & A EXCAVATING SERVICES LTD.
2010-03-03	61979	P. W. B. Enterprises Inc.	2010-03-11	62045	IDPA NEWFOUNDLAND & LABRADOR INC.
2010-03-04	61993	Marquise Heavy Equipment Ltd.	2010-03-11	62043	Parco Investments Inc.
			2010-03-12	62067	FILTRATION & INSTRUMENTATION SERVICES INC.
			2010-03-12	62066	J & A CONTRACTING INC.
			2010-03-12	62068	STICKS & STONES CONTRACTING LIMITED

THE NEWFOUNDLAND AND LABRADOR GAZETTE  
May 21, 2010

2010-03-12	62065	T & T CONSULTING & INSPECTIONS INC.	2010-03-23	62138	ALANDY HOLDINGS INC.
2010-03-12	62064	T R EXCAVATING INC	2010-03-23	62137	GUS' RECYCLE & SCRAPMETAL INC.
2010-03-12	62046	TP Resort Ltd	2010-03-23	62139	WEST COAST TIMBER INCORPORATED
2010-03-12	62047	B-LINE ELECTRIC LTD.	2010-03-23	62122	62122 NEWFOUNDLAND & LABRADOR LTD.
2010-03-12	62052	62052 NEWFOUNDLAND & LABRADOR INC	2010-03-23	62126	Loveless and Sons Property Inc.
2010-03-12	62054	FTB HOMES LTD.	2010-03-23	62127	Living Spaces Inc.
2010-03-12	62055	62055 NEWFOUNDLAND & LABRADOR LIMITED	2010-03-23	62129	GOLDSTAR DEVELOPMENTS INCORPORATED
2010-03-12	62056	Cowan Mechanical and Contracting Ltd.	2010-03-23	62130	Savell Consulting Inc.
2010-03-12	62059	PHB EQUITIES INC.	2010-03-23	62131	M & G Enterprises Ltd.
2010-03-12	62060	West Coast Automotive Ltd.	2010-03-23	62132	CVSS Enterprise Inc.
2010-03-16	62076	62076 NEWFOUNDLAND AND LABRADOR LTD	2010-03-23	62133	Wells Solutions Group Inc.
2010-03-16	62078	HSE WORKS INC	2010-03-23	62134	62134 NEWFOUNDLAND & LABRADOR INC
2010-03-16	62077	NOBLE'S CUTTING AND CORING LTD.	2010-03-24	62150	62150 NEWFOUNDLAND & LABRADOR LTD.
2010-03-16	62061	Zircon Web Design Inc.	2010-03-24	62153	BCG ESTATES INC.
2010-03-16	62062	62062 NEWFOUNDLAND & LABRADOR INC.	2010-03-24	62151	JEWER'S CONSTRUCTION INC.
2010-03-16	62063	REPUBLIC SEASON 2 INC.	2010-03-24	62145	NEW LOOK LAWN CARE INC.
2010-03-16	62071	62071 NEWFOUNDLAND & LABRADOR LTD.	2010-03-24	62152	NIKAN MANAGEMENT INC.
2010-03-16	62072	Baccalieu Telecommunications Consulting Inc.	2010-03-24	62148	RED BAY CONVENIENCE LTD.
2010-03-16	62074	Dynamic Mapping Inc	2010-03-24	62149	T. K.'S TRUCKING LTD.
2010-03-16	62075	Identity Salon & Spa Inc.	2010-03-24	62142	BLC Consulting Incorporated
2010-03-17	62090	62090 NEWFOUNDLAND & LABRADOR INC.	2010-03-25	62162	ACTIVE PLUMBING LTD
2010-03-17	62087	A B C GROCERIES LTD.	2010-03-25	62158	CEJ HOLDINGS INC
2010-03-17	62088	SHORT CIRCUIT ELECTRICAL LTD	2010-03-25	62157	CJ RIVER HOLDINGS INC.
2010-03-17	62089	WHEATON'S TRANSPORT INC.	2010-03-25	62159	JANES SERVICES INC.
2010-03-17	62083	Harmon Marine Inc.	2010-03-25	62156	RIVER 123 HOLDINGS INC
2010-03-17	62086	62086 NEWFOUNDLAND & LABRADOR LIMITED	2010-03-25	62144	Control-Alt-Success Computing Solutions Inc.
2010-03-18	62094	BEST KIND BED AND BREAKFAST LTD.	2010-03-25	62154	COLEMAN CAPITAL INC.
2010-03-18	62100	BMC HOLDINGS INC.	2010-03-25	62155	ELJ Holdings INC.
2010-03-18	62096	FAIRY HILL FARMS INC.	2010-03-26	62167	62167 NEWFOUNDLAND AND LABRADOR LIMITED
2010-03-18	62095	GLENN NICHOLS ENGINE SERVICES LTD.	2010-03-26	62168	62168 NEWFOUNDLAND AND LABRADOR LIMITED
2010-03-18	62099	J&D AQUA MARINE SERVICES INC.	2010-03-26	62169	BRANNAGH HOLDINGS INC.
2010-03-18	62098	RJG ENTERPRISES INC.	2010-03-26	62171	BRUNEAU ASSET MANAGEMENT LIMITED
2010-03-18	62097	WFZ VARIETIES INC.	2010-03-26	62166	FREEWAYS ENTERPRISES INC.
2010-03-18	62092	Central Newfoundland Rentals Limited	2010-03-26	62165	NEUROPSYCHETRIC PATIENTS ASSOCIATION OF NEWFOUNDLAND AND LABRADOR INC.
2010-03-18	62093	Right Turn Investments Inc.	2010-03-26	62170	SPRINGDALE DIAMOND DRILLING INC.
2010-03-19	62109	62109 NEWFOUNDLAND AND LABRADOR INC.	2010-03-26	62160	ALLTASK EXCAVATING INC.
2010-03-19	62108	DEEP SEA INSPECTIONS INC.	2010-03-26	62161	Offshore Safety Consulting Inc.
2010-03-19	62105	62105 NEWFOUNDLAND & LABRADOR INC.	2010-03-26	62163	J.D.K. Industrial Services Ltd.
2010-03-19	62106	Rowe's Landscaping Ltd.	2010-03-29	62176	4K CONTRACTING LTD.
2010-03-19	62107	Don Lewis Consulting Inc.	2010-03-29	62189	62189 NEWFOUNDLAND AND LABRADOR LTD.
2010-03-22	62117	BRANOLIN ENTERPRISES LTD	2010-03-29	62183	BIG HILL CONTRACTING INC
2010-03-22	62123	NORTH SHORE MANOR LIMITED	2010-03-29	62178	BKD HOLDINGS LIMITED
2010-03-22	62119	RECON DEVELOPMENT INC.	2010-03-29	62180	BLACKLER HOLDINGS LIMITED
2010-03-22	62118	TEST PHOTONICS CANADA LTD.	2010-03-29	62185	BTB HOLDINGS LIMITED
2010-03-22	62112	Tina Emberley, R.M.T. Ltd.	2010-03-29	62184	FLO HOLDINGS LIMITED
2010-03-22	62113	JZ HOLDINGS INC	2010-03-29	62181	GRESARJIL HOLDINGS LIMITED
2010-03-22	62116	62116 NEWFOUNDLAND & LABRADOR INC.	2010-03-29	62188	LIZAN CONSTRUCTION LTD.
			2010-03-29	62186	MATTHEW 25 OUTREACH INC.

THE NEWFOUNDLAND AND LABRADOR GAZETTE  
May 21, 2010

2010-03-29	62191	POUCH COVE HERITAGE COMMITTEE INC.	2010-03-02	59653	MHOWARD ENTERPRISES INC.
2010-03-29	62182	ROPSON HOLDINGS LIMITED	2010-03-02	19714	Paul Murphy Construction Limited
2010-03-29	62187	SIDING GUYS LTD.			
2010-03-29	62177	TECHLINE PAINTING & PLASTERING INC.	2010-03-02	9582	Terra Nova Brokers Limited
2010-03-29	62192	VERON ENTERPRISES INC.	2010-03-03	60158	DEANNA DEAN ENTERPRISES LIMITED
2010-03-29	62179	WHITTLE HOLDINGS LIMITED	2010-03-03	60817	PLUG YOUR EARS PUBLISHING LIMITED
2010-03-29	62164	XpressIT Solutions Inc.	2010-03-04	59640	FJC INVESTMENTS LIMITED
2010-03-29	62174	White Hills Outfitters Ltd.	2010-03-04	39264	MUSIC CITY INC.
2010-03-30	62201	BRAD ROBERTS DEVELOPMENTS INC.	2010-03-04	59639	PRESIDIUM MANAGEMENT INCORPORATED
2010-03-30	62199	TWO GUYS TRAINING INCORPORATED	2010-03-04	9197	Robert Churchill Building Supplies Limited
2010-03-30	62190	New Path Energy Technologies Canada Corp.	2010-03-04	50205	ROCK CITY MUSIC SCHOOL INC.
2010-03-30	62193	62193 NEWFOUNDLAND AND LABRADOR LIMITED	2010-03-04	56050	STAGE ELEVEN PRODUCTIONS INC.
2010-03-30	62198	Provincial Ready Mix Inc.	2010-03-04	19145	The Cape Freels Development Association
2010-03-31	62204	BUTTON'S CONTRACTING LIMITED	2010-03-08	17147	BROPHY DAIRY FARMS LIMITED
2010-03-31	62203	DCK BUILDING & RENOVATING INC.	2010-03-08	59200	CENTRAL DESTINATION MARKETING ORGANIZATION INC.
2010-03-31	62209	PADDY'S PUB INC.			
2010-03-31	62200	J & J Precision Carpentry Ltd.	2010-03-08	5337	Coastal Labrador Fisheries Limited
Total Incorporations: 180			2010-03-08	40302	KITTIWAKE HOLDINGS INCORPORATED
<b>Corporations Act - Section 331</b>			2010-03-09	2476	2476 NEWFOUNDLAND AND LABRADOR LIMITED
<b>Local Revivals</b>			2010-03-09	7842	B.D.I. Realities Limited
<b>For the Month of: March 2010</b>			2010-03-09	41262	iSYS - Intelligent System Solutions Corporation
<b>Date</b>	<b>Number</b>	<b>Company Name</b>	2010-03-09	6762	Trans-Island Investments Limited
2010-03-02	28696	England Holdings Limited	2010-03-10	8917	8917 NEWFOUNDLAND AND LABRADOR INC.
2010-03-02	37747	KRYSTAL LEE-ANN INCORPORATED	2010-03-10	14676	B.J.'s CONTRACTING LIMITED
2010-03-10	14676	B.J.'s CONTRACTING LIMITED	2010-03-10	48496	Arctic Blast Freezers Inc.
2010-03-11	44532	Arctic Blast Freezers Inc.	2010-03-10	22799	QX TECHNOLOGY SERVICES INC.
2010-03-17	37981	QX TECHNOLOGY SERVICES INC.	2010-03-10	56850	ATLANTIC CHARTER FOUNDATION INC.
2010-03-18	33473	ATLANTIC CHARTER FOUNDATION INC.	2010-03-10	61261	Newfoundland and Labrador Association of Chefs and Cooks, CFCC, St. John's Branch Inc.
2010-03-18	27123	Newfoundland and Labrador Association of Chefs and Cooks, CFCC, St. John's Branch Inc.	2010-03-10	54111	Newfoundland Outfitters Inc.
2010-03-18	41123	Newfoundland Outfitters Inc.	2010-03-10	57829	ANDREWS CONSULTING INC.
2010-03-22	34147	ANDREWS CONSULTING INC.	2010-03-11	44532	Gower Holdings Inc.
2010-03-25	43159	Gower Holdings Inc.	2010-03-11	51843	Triple J M Holdings Inc.
2010-03-30	46053	Triple J M Holdings Inc.	2010-03-11	38031	TAVERNERS REPAIR SHOP LIMITED
2010-03-31	16871	TAVERNERS REPAIR SHOP LIMITED	2010-03-11	60512	
Total Revivals: 12			2010-03-11	12976	HARBOUR VIEW RESTAURANT LIMITED
<b>Corporations Act - Section 286</b>			2010-03-11	34935	Humber Community Development Corporation
<b>Local Amendments</b>			2010-03-11	56181	NORTHERN FREEZERS INC.
<b>For the Month of: March 2010</b>			2010-03-12	54918	ALL-SAFE CONSULTING INC.
<b>Date</b>	<b>Number</b>	<b>Company Name</b>	2010-03-12	51382	D-Man's Electronics Inc.
2010-03-01	60206	60206 NEWFOUNDLAND & LABRADOR LIMITED	2010-03-12	58138	SETPOINT AE INC.
2010-03-01	61548	Alexander MacDonald Legal Services PLC Inc.	2010-03-12	2616	WABUSH LAKE RAILWAY COMPANY LIMITED
2010-03-01	61549	Alexander MacDonald Partnership PLC Inc.	2010-03-16	57107	57107 NEWFOUNDLAND & LABRADOR INC.
2010-03-01	53257	QUALITY NORTH INC.	2010-03-16	49652	Dynamic Air Shelters Ltd.
2010-03-01	60014	SELECTIVE MOVERS INC.	2010-03-16	55692	SOLACE POWER INC.
2010-03-02	37747	KRYSTAL LEE-ANN INCORPORATED	2010-03-17	52487	LES P'TITS CERFS-VOLANTS INC.
			2010-03-17	29682	Ryakuga Inc.
			2010-03-18	33473	ATLANTIC CHARTER FOUNDATION INC.

THE NEWFOUNDLAND AND LABRADOR GAZETTE  
May 21, 2010

2010-03-18	36041	DEZEEUW HOLDINGS LIMITED	2010-03-31	59318	TAYLOR'S SHEET METAL AND REFRIGERATION INC.
2010-03-18	27123	Newfoundland and Labrador Association of Chefs and Cooks, CFCC, St. John's Branch Inc.	Total Amendments: 86		
2010-03-18	41123	Newfoundland Outfitters Inc.	<b>Corporations Act - Section 335</b>		
2010-03-18	41122	ONL HOLDINGS INC.	<b>Local Dissolutions</b>		
2010-03-19	37886	NEWFOUNDLAND AND LABRADOR CONSTRUCTION SAFETY ASSOCIATION INCORPORATED	<b>For the Month of: March 2010</b>		
			<b>Date</b>	<b>Number</b>	<b>Company Name</b>
			2010-03-01	40581	SON Contracting Limited
			2010-03-01	61630	SUMMER PALACE RESTAURANT INC.
2010-03-19	49208	SHIP SHAPE FITNESS CENTRE INC	2010-03-02	55901	55901 NEWFOUNDLAND AND LABRADOR INC.
2010-03-22	62041	THE BODY KNEADS THERAPISTS INC.	2010-03-02	20176	J. J. E. J. Management Company Limited
2010-03-23	48918	COHEN'S HOME FURNISHINGS (2010) LIMITED	2010-03-03	35680	ELLIS'S TRUCKING LIMITED
			2010-03-08	50285	DSR CONSTRUCTION LTD.
2010-03-23	47044	Merashleen Reunion Inc.	2010-03-08	55840	ROADSIDE AUTO LTD
2010-03-24	61926	BCGL HOLDINGS INC.	2010-03-10	57509	SIMMS SERVICES INC.
2010-03-24	29852	BYRON'S CLOTHING FOR MEN LIMITED	2010-03-11	38538	Goose Pond Trading Company Ltd.
2010-03-24	61917	TRANS ISLAND PROPERTIES INC.	2010-03-11	54226	Liverpool Holdings Ltd.
			2010-03-11	39214	TREAT SHOPPE BAKERY LIMITED
2010-03-25	61357	BACCALIEU SOD FARMS INC.	2010-03-12	52702	CHIPPLEHOUSE KNOWLEDGE MANAGEMENT INC.
2010-03-25	50335	BOTWOOD FUR RANCH INC.			Crown of the Valley Development Corporation
2010-03-25	61796	SANI SMART WASTE DISPOSAL SERVICES INC.	2010-03-16	40082	KIWANIS CLUB of CABOT, NEWFOUNDLAND
2010-03-26	56419	Atlantic Interactive Ltd.	2010-03-16	8132	TRI CON COMMANDER INC.
2010-03-26	49578	DR. C. ANANDAKRISHNAN PMC INC.	2010-03-16	31724	Communities In Schools (CIS) Newfoundland and Labrador, Inc.
2010-03-26	54715	DR. VIKI SAHAJPAL PROFESSIONAL MEDICAL CORPORATION	2010-03-18	45000	N and F Contracting Ltd.
2010-03-26	58232	FOGI ENTERPRISES INC.	2010-03-19	44711	GIGGLES RESTAURANT & CATERING SERVICES LTD.
2010-03-26	20375	TWILIGHT ENTERPRISES LIMITED	2010-03-23	59168	MACHINE SHOP SERVICES INC.
2010-03-29	57008	Allied Youth Newfoundland and Labrador Inc.	2010-03-23	48096	BROWN'S LIMITED
2010-03-29	41658	DENISE ANN II LTD.	2010-03-24	7815	Maneva Holdings Limited
2010-03-29	36495	Green Isle Enterprise Ltd.	2010-03-24	16112	MODERN LIGHTING INC.
2010-03-29	50209	HAROLD WHITTLE (PAINTING CONTRACTOR) LIMITED	2010-03-25	50043	TRANQUILITY HAIR & ESTHETICS INC.
			2010-03-25	52821	TREES R' WEEZ LTD.
2010-03-29	7896	Provincial Medical Supplies Limited	2010-03-25	51526	11267 NEWFOUNDLAND INC.
			2010-03-26	47427	EDWARDS INSPECTION & CONSULTING SERVICES INC.
2010-03-30	45802	ALWAYS AIR LTD.	2010-03-26	57750	Newfoundland Photographer Services Limited
2010-03-30	57275	BEACHROK TECHNOLOGIES INC.	2010-03-26	53917	Resource Engineering Services Ltd.
2010-03-30	10087	COMMUNITY SECTOR COUNCIL OF NEWFOUNDLAND AND LABRADOR INC.	2010-03-29	37452	JDL HOLDINGS LIMITED
2010-03-30	13475	McIsaac Contracting Limited	2010-03-30	55865	L.A. SIDING LTD.
2010-03-31	57108	57108 NEWFOUNDLAND & LABRADOR INC.	2010-03-30	60659	55191 NEWFOUNDLAND & LABRADOR LIMITED
			2010-03-31	55191	ADI (NEWFOUNDLAND) LIMITED
2010-03-31	62111	C.M. INVESTMENTS LIMITED	2010-03-31	58720	Cross's Convenience & Gas Bar Limited
2010-03-31	27873	MacKenzie Ambulance Service Inc.	2010-03-31	24295	KSD Enterprises Ltd.
2010-03-31	48149	SEXTON LUMBER CO. LIMITED	2010-03-31	44798	
2010-03-31	50979	STAGEHEAD ART INC.	Total Dissolutions: 34		

THE NEWFOUNDLAND AND LABRADOR GAZETTE  
May 21, 2010

<b>Corporations Act - Section 299</b>			60014		SELECTIVE MOVERS INC.
<b>Local Discontinuances</b>			2010-03-01	From:	SEAFOOD MOVERS INC.
<b>For the Month of: March 2010</b>					
<b>Date</b>	<b>Number</b>	<b>Company Name</b>	59653		MHOWARD ENTERPRISES INC.
2010-03-01	58797	D.F. BARNES LIMITED			
2010-03-01	47306	Extreme East Rigging Services Ltd.	2010-03-02	From:	Warbix International Inc.
2010-03-01	49044	NewLab Oxygen Limited	60817		PLUG YOUR EARS PUBLISHING LIMITED
2010-03-01	51560	OMI SERVICES LIMITED			REDSONGS LIMITED
2010-03-01	50384	ORPHAN INDUSTRIES LIMITED	2010-03-03	From:	
Total Discontinuances: 5			59640		FJC INVESTMENTS LIMITED
<b>Corporations Act - Section 294</b>			2010-03-04	From:	59640 NEWFOUNDLAND & LABRADOR INC.
<b>Local Amalgamations</b>					
<b>For the Month of: March 2010</b>					
<b>Date</b>	<b>Number</b>	<b>Company Name</b>	39264		MUSIC CITY INC.
2010-03-01	61976	CABOT HOLDINGS LIMITED	2010-03-04	From:	MUSIC CITY INC.
From:	45923	Cabot Holdings Limited			
	17787	O'Leary Holdings Limited	59639		PRESIDIUM MANAGEMENT INCORPORATED
2010-03-01	61975	FROG POND HOLDINGS LIMITED	2010-03-04	From:	59639 NEWFOUNDLAND & LABRADOR INC.
From:	7182	COHEN'S HOME FURNISHINGS LIMITED			
	59402	FROG POND HOLDINGS LIMITED	50205		ROCK CITY MUSIC SCHOOL INC.
2010-03-09	62025	HOMETEL SUITES (2010) LIMITED	2010-03-04	From:	ROCK CITY MUSIC SCHOOL INC.
From:	46673	HILLGATE DEVELOPMENT INC.	56050		STAGE ELEVEN PRODUCTIONS INC.
	50784	HOMETEL SUITES LIMITED	2010-03-04	From:	56050 NEWFOUNDLAND & LABRADOR INC.
2010-03-11	62048	PRATT FALLS SALMON LODGE LTD.	56850		PORTER HOLDINGS LIMITED
From:	59607	GOOSE BAY OUTFITTERS LIMITED	2010-03-10	From:	DR. ANNE PORTER PROFESSIONAL MEDICAL CORPORATION
	60297	Pratt Falls Salmon Lodge Ltd.			
2010-03-19	62111	C.M. INVESTMENTS LIMITED	54111		REDDY HOLDINGS LIMITED
From:	9231	C.M. Investments Limited	2010-03-10	From:	DR. JAGAN REDDY PROFESSIONAL MEDICAL CORPORATION
	9470	Sherwood Investments Limited			
2010-03-31	62207	NEW WAVE ENTERPRISES LTD.	57829		SHOAL HARBOUR INVESTMENTS INC.
From:	46610	COT ENTERPRISE LTD.	2010-03-10	From:	57829 NEWFOUNDLAND AND LABRADOR LIMITED
	57833	NEW WAVE ENTERPRISES LTD.			
2010-03-31	62208	SUMMIT BUILDERS LIMITED	51843		BIG DEALS ON WHEELS LTD.
From:	44298	Access Plus Inc.	2010-03-11	From:	PIPS CHIPS INCORPORATED
	31715	Summit Builders Limited			
Total Amalgamations: 7					
<b>Corporations Act - Section 286</b>			52487		LES P'TITS CERFS-VOLANTS INC.
<b>Local Name Changes</b>					
<b>For the Month of: March 2010</b>					
<b>Number</b>	<b>Company Name</b>		2010-03-17	From:	Le Centre de la Petite Enfance et Famille des Grands Vents Inc.
60206	60206 NEWFOUNDLAND & LABRADOR LIMITED				
2010-03-01	From:	Newfoundland Kitchen Party Limited	61926		BCGL HOLDINGS INC.
			2010-03-24	From:	BCGL HOLDINGS INC.
			61917		TRANS ISLAND PROPERTIES INC.
			2010-03-24	From:	61917 NEWFOUNDLAND & LABRADOR INC.

THE NEWFOUNDLAND AND LABRADOR GAZETTE  
May 21, 2010

61357		BACCALIEU SOD FARMS INC.			MANAGEMENT CORP./GESTION ACCREDITIVE 2010 CONNOR, CLARK & LUNN CORP.
2010-03-25	From:	61357 NEWFOUNDLAND AND LABRADOR INC.	2010-03-16	62079	WEST 49 GROUP INC.
61796		SANI SMART WASTE DISPOSAL SERVICES INC.	2010-03-16	62080	WEST 49 INC.
2010-03-25	From:	61796 NEWFOUNDLAND & LABRADOR LTD.	2010-03-17	62091	BCL MINING AND MECHANICAL INCORPORATED
49578		DR. C. ANANDAKRISHNAN PMC INC.	2010-03-18	62101	JACOBS CANADA INC.
2010-03-26	From:	DRS. C & I ANANDAKRISHNAN P.M.C. INC.	2010-03-18	62104	NISSAN CANADA AUTO RECEIVABLES 1 INC.
58232		FOGI ENTERPRISES INC.	2010-03-18	62102	NISSAN CANADA AUTO RECEIVABLES 2 INC.
2010-03-26	From:	R.A.T. RENTAL HOLDINGS LTD.	2010-03-18	62103	NORTHERN CAPITAL ASSOCIATES HOLDINGS CANADA II ULC
62111		C.M. INVESTMENTS IMITED	2010-03-22	62121	ACI MEDIA GROUP INC.
2010-03-31	From:	SHERWOOD INVESTMENTS LIMITED	2010-03-22	62120	CENTAUR PRODUCTS (ATLANTIC) INCORPORATED
			2010-03-22	62143	SOMERSET CARPENTRY LIMITED
Total Name Changes: 21			2010-03-23	62136	CANADIANA FINANCIAL CORP.
			2010-03-23	62135	KASIAN ARCHITECTURE ONTARIO INCORPORATED

**Corporations Act - Section 443  
Extra-Provincial Registrations  
For the Month of: March 2010**

Date	Number	Company Name		Number	Company Name
2010-03-01	61972	TOTALLINE TRANSPORT INC.	2010-03-24	62146	TSHIUETIN RAIL TRANSPORTATION INC.
2010-03-03	61991	ELLISON MACHINERY COMPANY LTD.	2010-03-24	62146	HOLMAN CANADA GP II COMPANY
2010-03-03	61992	EXECUTOR RISK PROTECTION PLAN INC.	2010-03-26	62172	BLAIR FRANKLIN CAPITAL PARTNERS INC.
2010-03-03	61990	SCHONBEK WORLDWIDE LIGHTING INC.	2010-03-29	62194	169092 CANADA INC.
2010-03-04	62009	AIB INTERNATIONAL CANADA, INC.	2010-03-29	62197	LEASE RESIDUALS HOLDINGS CANADA ULC
2010-03-04	62008	MACQUARIE SECURITIES FINANCING LTD. (CANADA)	2010-03-29	62196	MCCORMICK RANKIN CORPORATION
2010-03-08	62014	BAY INDUSTRIAL SERVICES OF CANADA INC.	2010-03-29	62195	WESTERN FINANCIAL GROUP (NETWORK) INC.
2010-03-08	62010	BROOKFIELD INVESTMENT MANAGEMENT INC.	Total Registrations: 39		
2010-03-08	62018	MAVRIX EXPLORE 2010 - I FT MANAGEMENT LIMITED			
2010-03-09	62027	2035356 ONTARIO LIMITED			
2010-03-09	62029	7261543 CANADA INC.			
2010-03-09	62030	AMERICAN APPAREL CANADA RETAIL INC.			
2010-03-09	62032	LES BOUTIQUES AMERICAN APPAREL CANADA INC.			
2010-03-10	62032	BERRY Y&V INDUSTRIAL CONTRACTING ULC	61111		ADVANTAGE RESOURCING INTERNATIONAL, INC.
2010-03-11	62038	1450748 ONTARIO LIMITED			
2010-03-11	62050	AIR SAGUENAY (1980) INC.	2010-03-10	From:	TECHNICAL AID INTERNATIONAL INC.
2010-03-11	62049	G.B.S. COMMUNICATIONS INC.			
2010-03-11	62051	LABRADOR AIR SAFARI (1984) INC.	51812		4513428 CANADA INC.
2010-03-12	62070	INNU RAIL CANTECH LTD.			2010-03-12 From: LARSEN PACKERS LIMITED
2010-03-12	62069	RAIL CANTECH NORTHERN INC.	6781F		PIONEER HI-BRED COMPANY
2010-03-16	62081	CONNOR, CLARK & LUNN 2010 FLOW-THROUGH			

**Corporations Act - Section 451  
Extra-Provincial Name Changes  
For the Month of: March 2010**

THE NEWFOUNDLAND AND LABRADOR GAZETTE  
May 21, 2010

2010-03-16	From:	PIONEER HI-BRED COMPANY	52758		MD PHYSICIAN SERVICES SOFTWARE INC.
6781F		PIONEER HI-BRED LIMITED			SERVICES AUX MÉDECINS MD – LOGICIELS INC.
2010-03-16	From:	PIONEER HI-BRED COMPANY	2010-03-25	From:	PRACTICE SOLUTIONS SOFTWARE INC.
62082		SUNWING TOURS INC.			SOLUTIONS CLINIQUES-LOGICIELS INC.
2010-03-16	From:	RED SEAL TOURS INC.	61305		STONECAP SECURITIES INC.
55026		TRANSCOM INSURANCE AGENCY INC.	2010-03-26	From:	CI CAPITAL MARKETS INC./MARCHÉS DE CAPITAUX CI INC.
2010-03-16	From:	NUCOMM INSURANCE AGENCY INC.			
61790		ROCKBRIDGE MINERALS INC.	62175		CANADIAN ROAD HOLDINGS COMPANY
2010-03-17	From:	0859842 B.C. LTD.	2010-03-29	From:	CANADIAN ROAD LEASING COMPANY/COMPAGNIE DE LOCATION CANADIAN ROAD
60938		FAIRCOURT EXPLORATION FLOW-THROUGH 2010 MANAGEMENT LTD.			
2010-03-18	From:	FAIRCOURT EXPLORATION FLOW-THROUGH 2009 MANAGEMENT LTD.	Total Name Changes: 16		
<b>Corporations Act - Section 294</b>					
<b>Extra-Provincial Registrations for Amalgamation</b>					
<b>For the Month of: March 2010</b>					
			<b>Date</b>	<b>Number</b>	<b>Company Name</b>
62115		SCHNEIDER ELECTRIC CANADA INC.	2010-03-01	61973	SHRED-IT INTERNATIONAL INC.
2010-03-19	From:	SCHNEIDER CANADA INC.	From:	60364	SHRED-IT INTERNATIONAL INC.
50398		BAMBERGER POLYMERS (CANADA) CORP./POLYMERES BAMBERGER (CANADA) CORP.	2010-03-04	62015	TIMOTHY'S COFFEES OF THE WORLD INC.
			From:	58155	TIMOTHY'S COFFEES OF THE WORLD INC.
2010-03-22	From:	BAMBERGER POLYMERS (CANADA) CORP./POLYMERES BAMBERGER (CANADA) CORP.	2010-03-08	62020	VALUE VILLAGE STORES, INC.
			From:	4552F	VALUE VILLAGE STORES, INC.
2010-03-22	From:	BAMBERGER POLYMERS (CANADA), INC./POLYMERES BAMBERGER (CANADA), INC.	2010-03-11	62053	INNOVATIA INC.
			From:	3969D	Innovatia Inc.
			2010-03-12	62057	MAPLE LEAF FOODS INC. LES ALIMENTS MAPLE LEAF INC.
50398		BAMBERGER POLYMERS (CANADA), INC./POLYMERES BAMBERGER (CANADA), INC.	From:	2609D	MAPLE LEAF FOODS INC. LES ALIMENTS MAPLE LEAF INC.
2010-03-22	From:	BAMBERGER POLYMERS (CANADA) CORP./POLYMERES BAMBERGER (CANADA) CORP.	2010-03-12	62058	MAPLE LEAF FOODS INC. LES ALIMENTS MAPLE LEAF INC.
			From:	62057	MAPLE LEAF FOODS INC. LES ALIMENTS MAPLE LEAF INC.
2010-03-22	From:	BAMBERGER POLYMERS (CANADA), INC./POLYMERES BAMBERGER (CANADA), INC.	2010-03-12	62073	MAPLE LEAF FOODS INC. LES ALIMENTS MAPLE LEAF INC.
			From:	51812	4513428 CANADA INC.
50246		NORTEC MINERALS CORP.		57674	MAPLE LEAF CONSUMER FOODS INC./LES ALIMENTS
2010-03-23	From:	NORTEC VENTURES CORP.			



	1761F	DE CONSOMMATION MAPLE LEAF INC. REFRIGERATED CARRYALL LTD. TRANSPORTS FRIGORIFIQUES CARRYALL LTEE.	2010-03-30 From:	62202 6700F	COMPANY/COMPAGNIE DE LOCATION CANADIAN ROAD FIDELITY INVESTMENTS CANADA ULC FIDELITY INVESTMENTS CANADA ULC
2010-03-16 From:	62082 57252	SUNWING TOURS INC. FIRST CHOICE CANADA INC./ PREMIER CHOIX CANADA INC.	2010-03-31	62211	LES DISTRIBUTIONS R.V.I. LIMITÉE R.V.I. DISTRIBUTIONS LIMITED ATLAS PRO SERVICE INC.
2010-03-16 From:	62084 51296	THE SCORE TELEVISION NETWORK LTD. THE SCORE TELEVISION NETWORK LTD.	2010-03-31 From:	6395F 62206 59887	SGS CANADA INC. SGS CANADA INC.
2010-03-16 From:	62085 62084	THE SCORE TELEVISION NETWORK LTD. THE SCORE TELEVISION NETWORK LTD.	2010-03-31 From:	62210 51018	THE ANTIOCH COMPANY, LLC THE ANTIOCH COMPANY
2010-03-19 From:	62110 3073D	ROCKWELL AUTOMATION CANADA INC. ROCKWELL AUTOMATION CANADA INC.	Total Registrations for Amalgamation: 24 DEPARTMENT OF GOVERNMENT SERVICES DEAN DOYLE Registrar of Companies (A)		
2010-03-19 From:	62114 62110	ROCKWELL AUTOMATION CANADA INC. ROCKWELL AUTOMATION CANADA INC.	May 21		
2010-03-19 From:	62115 60988	SCHNEIDER ELECTRIC CANADA INC. SCHNEIDER CANADA INC.	<b>MINERAL ACT</b> <b>CORRECTION NOTICE(S)</b> Published in accordance with section 62 of CNLR 1143/96 under the <i>Mineral Act</i> , cM-12, RSNL 1990 as amended.  In <i>The Newfoundland and Labrador Gazette</i> Vol 85, No. 19 of May 14, 2010 there appeared a <i>Mineral Act</i> Notice regarding the cancellation of Mineral Licences 10228M.  This notice was published in error.  JIM HINCHEY, P.Geo. Manager - Mineral Rights		
2010-03-22 From:	62125 53836	FAIRMONT HOTELS & RESORTS INC. FAIRMONT HOTELS & RESORTS INC.	File #: 774: 5675 May 21		
2010-03-22 From:	62128 62125	FAIRMONT HOTELS & RESORTS INC. FAIRMONT HOTELS & RESORTS INC.	<b>URBAN AND RURAL PLANNING ACT</b> <b>NOTICE OF REGISTRATION</b> <b>ST. JOHN'S MUNICIPAL PLAN</b> <b>AMENDMENT NO. 77, 2009</b> <b>AND DEVELOPMENT REGULATIONS</b> <b>AMENDMENT No. 472, 2009</b>  TAKE NOTICE that the ST. JOHN'S Municipal Plan Amendment No. 77, 2009 and Development Regulations Amendment No. 472, 2009, adopted on the 5 <sup>th</sup> day of April, 2010, and approved on the 3 <sup>rd</sup> day of May, 2010 has been registered by the Minister of Municipal Affairs.  In general terms, the purpose of Municipal Plan Amendment No. 77, 2009 is to redesignate land on the		
2010-03-22 From:	62124 57339	TDK GENERAL PARTNER INC./COMMANDITE TDK INC. TDK GENERAL PARTNER INC./COMMANDITE TDK INC.			
2010-03-23 From:	62141 198D	SECURITAS CANADA LIMITED/ SECURITAS CANADA LIMITÉE Securitas Canada Limited/ Securitas Canada Limitee			
2010-03-24 From:	62147 50613	FRIEDBERG MERCANTILE GROUP LTD. FRIEDBERG MERCANTILE GROUP LTD.			
2010-03-26 From:	62173 59823	BASF CANADA INC. BASF CANADA INC.			
2010-03-29 From:	62175 53434	CANADIAN ROAD HOLDINGS COMPANY CANADIAN ROAD LEASING			

south side of Waterford Bridge Road west of Civic Number 227 Waterford Bridge Road, to the Residential Low Density District and the Open Space District.

In general terms, the purpose of Development Regulations Amendment No. 472, 2009 is to rezone land on the south side of Waterford Bridge Road, west of Civic Number 227 Waterford Bridge Road, to the Residential Low Density (R1) Zone and the Open Space (O) Zone.

These amendments come into effect on the day that this notice is published in *The Newfoundland and Labrador Gazette*. Anyone who wishes to inspect a copy of them may do so at the City's Department of Planning during normal working hours.

CITY OF ST. JOHN'S  
Cheryl Kearney, Department of Planning

May 21

---

**NOTICE OF REGISTRATION  
ST. JOHN'S DEVELOPMENT  
REGULATIONS AMENDMENT  
NUMBER 481, 2010**

TAKE NOTICE that the ST. JOHN'S Development Regulations Amendment Number 481, 2010, adopted on the 3<sup>rd</sup> day of May, 2010, has been registered by the Minister of Municipal Affairs.

In general terms, the purpose of Development Regulations Amendment Number 481, 2010 is to rezone property at Civic Number 33 – 37 Elizabeth Avenue from the Commercial Industrial (CI) Zone to the Commercial Neighbourhood (CN) Zone.

This amendment comes into effect on the day that this notice is published in *The Newfoundland and Labrador Gazette*. Anyone who wishes to inspect a copy of it may do so at the City's Department of Planning during normal business hours.

CITY OF ST. JOHN'S  
Cheryl Kearney, Department of Planning

May 21

---

**NOTICE OF REGISTRATION  
CITY OF MOUNT PEARL  
MUNICIPAL PLAN  
AMENDMENT NO. 76, 2010  
DEVELOPMENT REGULATIONS  
AMENDMENT NO. 196, 2010**

TAKE NOTICE that the CITY OF MOUNT PEARL Municipal Plan Amendment No. 76, 2010, and Development Regulations Amendment No. 196, 2010, adopted by Council on the 23<sup>rd</sup> day of March, 2010, and approved on the 20<sup>th</sup> day of April, 2010, have been registered by the Minister of Municipal Affairs.

In general terms, the purpose of Municipal Plan Amendment No. 76, 2010 is to rectify the designation boundaries to correspond to property ownership in the area of 23 Moores Drive. This amendment is brought forward by the property owner of 23 Moores Drive.

In general terms, the purpose of the Development Regulations Amendment No. 197, 2010 is to rectify the zoning boundaries to correspond to property ownership in the area. This amendment is brought forward by the property owner of 23 Moores Drive.

The Municipal Plan Amendment No. 76, 2010, and Development Regulations Amendment No. 197, 2010, come into effect on the day that this notice is published in *The Newfoundland & Labrador Gazette*. Anyone who wishes to inspect a copy of these Amendments may do so at the Mount Pearl City Hall, 3 Centennial Street, during normal working hours.

CITY OF MOUNT PEARL  
Per: Gerard Lewis, Chief Administrative Officer

May 21

---

**NOTICE OF REGISTRATION  
CITY OF MOUNT PEARL  
DEVELOPMENT REGULATIONS  
AMENDMENT NO. 197, 2010**

TAKE NOTICE that the CITY OF MOUNT PEARL Development Regulations Amendment No. 197, 2010, adopted by Council on the 26<sup>th</sup> day of April 2010, has been registered by the Minister of Municipal Affairs.

In general terms, the purpose of the Development Regulations Amendment No. 197, 2010 is to provide Council with more direct control over the placement of election signs on an election day, as well as in relation to medians, boulevards and intersection islands situated within the street rights of way

The Development Regulations Amendment No. 197, 2010, comes into effect on the day that this notice is published in *The Newfoundland & Labrador Gazette*. Anyone who wishes to inspect a copy of these Amendments may do so at the Mount Pearl City Hall, 3 Centennial Street, during normal working hours.

CITY OF MOUNT PEARL  
Per: Gerard Lewis, Chief Administrative Officer

May 21

---

**NOTICE OF REGISTRATION  
TOWN OF TRITON  
MUNICIPAL PLAN  
AMENDMENT No. 4, 2008, and  
DEVELOPMENT REGULATIONS  
AMENDMENT No. 5, 2008**

Take notice that the TOWN OF TRITON Municipal Plan Amendment No. 4, 2008 and Development Regulations Amendment No. 5, 2008, as approved by Council on the 31<sup>st</sup> day of September, 2009, have been registered by the Minister of Municipal Affairs.

In general terms, Municipal Plan Amendment No. 4, 2008 will re-designate an area of land from Rural Resource to Residential II.

Development Regulations Amendment No. 5, 2008 will re-zone the same area of land from Rural Resource to Residential II. The Amendment will also add a definition for Bed and Breakfast to Schedule "A"; add Bed and Breakfast to Schedule B - Classification of Uses of Land and Buildings, as a new class of use under the Division - General Residential Uses; add Bed and Breakfast, as a discretionary use with development conditions, to the Residential I (Res I); Residential II (Res II) Mixed Development (MD) and Commercial (Comm) Land Use Zones and add Bed and Breakfast to Schedule D – Off-Street Parking Requirements.

The Town of Triton Municipal Plan Amendment No. 4, 2008 and Development Regulations Amendment No. 5, 2008, comes into effect on the day that this notice is published in *The Newfoundland & Labrador Gazette*. Anyone who wishes to inspect a copy of the Town of Triton Municipal Plan Amendment No. 4, 2008 and Development Regulations Amendment No. 5, 2008, may do so at the Town Office, Triton during normal working hours.

TOWN OF TRITON  
Sandy Winsor, Town Clerk/Manager

May 21

---

**NOTICE OF REGISTRATION  
TOWN OF SPRINGDALE  
MUNICIPAL PLAN  
AMENDMENT NO. 3, 2010  
AND  
DEVELOPMENT REGULATIONS  
AMENDMENT NO. 3, 2010**

TAKE NOTICE that the TOWN OF SPRINGDALE Municipal Plan Amendment No. 3, 2010 and the Development Regulations Amendment No. 3, 2010 as adopted on the 22<sup>nd</sup> day of March, 2010 and approved on the 20<sup>th</sup> day of April, 2010, have been registered by the Minister of Municipal Affairs.

In general terms, the purpose of the Municipal Plan amendment and the Development Regulations amendment is accommodate the existing and future commercial use the Springdale Garage property on Main Street.

The Municipal Plan Amendment No. 3, 2010 and Development Regulations Amendment No. 3, 2010 come into effect on the day that this notice is published in *The Newfoundland & Labrador Gazette*.

Anyone who wishes to inspect a copy of the Springdale Municipal Plan Amendment No. 3, 2010 and Development Regulations Amendment No. 3, 2010 may do so at the Springdale Town Office during normal working hours.

TOWN OF SPRINGDALE  
Rick LeDrew, CAO/Manager

May 21

---

**NOTICE OF REGISTRATION  
TOWN OF PARADISE  
DEVELOPMENT REGULATIONS  
AMENDMENT #48 - 2010**

TAKE NOTICE that the TOWN OF PARADISE Municipal Development Regulations Amendment No. 48 – 2010, adopted on the 4<sup>th</sup> day of May 2010, has been registered by the Minister of Municipal Affairs.

In general terms, this Development Regulations Amendment would permit a subsidiary apartment in a single family dwelling in the Residential Watershed Use Zone.

The text amendment will require the deletion of text prohibiting subsidiary apartments and the addition of text permitting a subsidiary apartment subject to conditions.

The amendment comes into effect on the day that this notice is published in *The Newfoundland and Labrador Gazette*. Anyone wishing to inspect a copy of Development Regulations Amendments No. 48 – 2010 may do so at the Paradise Town Hall, 28 McNamara Drive, during normal hours of operation.

TOWN OF PARADISE  
Janis Swantee, Town Clerk

P.O. # 24514.

May 21

---

**NOTICE OF REGISTRATION  
TOWN OF ST. GEORGE'S  
MUNICIPAL PLAN  
AMENDMENT NO. 5, 2010  
AND  
DEVELOPMENT REGULATIONS  
AMENDMENT NO. 6, 2010**

TAKE NOTICE that the TOWN OF ST. GEORGE'S Municipal Plan Amendment No. 5, 2010 and Development Regulations Amendment No. 6, 2010 as approved on the 12<sup>th</sup> day of April, 2010, have been registered by the Minister of Municipal Affairs.

In general terms the purpose of the Municipal Plan amendment and Development Regulations amendment is to allow residential development on a block of land located on the north side of Main Street approximately 200 metres west of the Indian Pond/Barachois Brook Bridge.

The Municipal Plan Amendment No. 5, 2010 and Development Regulations Amendment No. 6, 2010 come into effect on the day that this notice is published in *The Newfoundland & Labrador Gazette*.

Anyone who wishes to inspect a copy of the St. George's Municipal Plan Amendment No. 5, 2010 and Development Regulations Amendment No. 6, 2010 may do so at the St. George's Town Office during normal working hours.

TOWN OF ST. GEORGE'S  
Ray Chant, Town Manager

May 21

---

---

**LANDS ACT**

**NOTICE OF INTENT**

**LANDS ACT, c36, SNL 1991**

Notice is hereby given that DEPARTMENT OF ENVIRONMENT AND CONSERVATION, two months from the publication of this notice, intends to allocate land, under the authority of subsection 7(2) (a) of the said Act, for all that piece or parcel of Crown Land situated within fifteen (15) metres of the waters of Lower Shoal Harbour, Clarenville, in the Electoral District of Trinity North.

The land is described as follows:

*Bounded on the North by lands formerly leased to  
Discovery Opportunity Centre Inc.  
for a distance of 67 m;  
Bounded on the East by Bayview Road  
for a distance of 15 m;  
Bounded on the South by the waters of  
Lower Shoal Harbour  
for a distance of 67 m  
Bounded on the West by Memorial Drive  
for a distance of 15 m;  
and containing an area of  
approximately 1005 square metres.*

Any person wishing to object to the application must file the objection, in writing, within one month from the publication of this notice, with reasons for it, to the Minister of Environment and Conservation, c/o Eastern Regional Lands Office, Howley Building, Higgins Line, P. O. Box 8700, St. John's, NL, A1B 4J6.

For further information on the proposed allocation, please contact MR. WAYNE DAWE, Regional Lands Manager, Telephone (709) 729-2654.

P.O. # 210008441

May 21

---

---

**QUIETING OF TITLES ACT**

**2010 06T 0060  
IN THE SUPREME COURT OF  
NEWFOUNDLAND AND LABRADOR  
TRIAL DIVISION**

Notice of Application under the *Quieting of Titles Act*, RSNL 1990, cQ-3, as amended;

Notice is hereby given to all parties that EDISON STANLEY of the Town of Clarenville, in the District of Trinity North, in the Province of Newfoundland and Labrador, has applied to the Supreme Court of Newfoundland and Labrador, Trial Division, Grand Bank, to have title to all that piece or parcel of property situate at Clarenville, in the Province of Newfoundland and Labrador, which property is more particularly described in Schedule "A" hereto annexed and shown in Schedule "B" hereto annexed.

ALL BEARINGS aforementioned for which EDISON STANLEY claims to be the owner investigated and for a Declaration that he is the absolute owner in fee simple in possession and the said Edison Stanley has been ordered to publish Notice of Application as required by the above named Act.

All persons having title adverse to the said title claimed by the said EDISON STANLEY shall file in the Registry of the Supreme Court of Newfoundland and Labrador, Trial Division, Grand Bank, particulars of such adverse claim and serve the same together with an Affidavit verifying same on the undersigned Solicitors for the Petitioner on or before 10<sup>th</sup> day of June, 2010, after which date no party having any claim shall be permitted to file the same or to be heard except by special leave of the Court and subject to such conditions as the Court may deem just.

All such adverse claims shall be investigated then in such manner as the Supreme Court of Newfoundland and Labrador, Trial Division, Grand Bank, may direct.

**DATED AT** Clarenville, in the Province of Newfoundland and Labrador, this 29<sup>th</sup> day of April, 2010.

HUGHES AND BRANNAN LAW OFFICE  
Solicitors for the Applicant  
PER: James D. Hughes, Q.C.

ADDRESS FOR SERVICE:  
357 Memorial Drive  
Clarenville NL A5A 1R8  
Tel: (709) 466-3106  
Fax: (709) 466-4383

**SCHEDULE "A"**

**Edison Stanley  
Clarenville, NL**

ALL THAT piece or parcel of land situate and being in the Town of Clarenville, in the Electoral District of Trinity North abutted and bounded as follows:

THAT IS TO SAY: Beginning at a point on the southern limit of Valley Road, the said point having coordinates N 5 335 605.21 meters and E 232 735.42 meters of the Three Degree Modified Transverse Mercator Projection (NAD-83) for the Province of Newfoundland and Labrador.

THENCE along the said southern limit of Valley Road South seventy-six degrees seventeen minutes thirty-five minutes East (S 76 17 35 E) thirty three decimal four one (33.41) meters, South seventy-four degrees twenty-two minutes zero zero seconds East (S 74 22 00 E) thirteen decimal three one (13.31) meters

THENCE by property of Hickman Motors Limited South thirty-nine degrees twelve minutes thirty seconds west (S 39 12 30 W) seventy-one decimal four six (71.46) meters, south twenty-two degrees zero eight minutes thirty seconds East (S 22 08 30 E) thirty-eight decimal six six (38.66) meters;

THENCE by property of Shoal Investments Limited South seventy-three degrees fifty-seven minutes forty-five seconds West (S 73 57 45 W) thirty-three decimal zero four (33.04) meters, South seventy-three degrees forty-seven minutes forty seconds West (S 73 47 40 W) fifteen decimal three zero (15.30) meters;

THENCE by property of Goobie Rental and Contracting Limited North fifty-three degrees twenty-eight minutes thirty seconds West (N 53 28 30 W) nineteen decimal one six (19.16) meters, north fifty-three degrees twenty-seven minutes fifty seconds west (N 53 27 50 W) forty-five decimal six nine (45.69) meters;

THENCE by property of John Metcalfe North twenty-two degrees fifty minutes zero zero seconds East (N 22 50 00 E) forty-nine decimal six one (49.61) meters;

THENCE by property of Tony Ellis South seventy degrees fifty minutes fifty seconds East (S 70 50 50 E) sixteen decimal eight seven (16.87) meters, North nine degrees thirty-nine minutes fifty-five seconds East (N 9 39 55 E) two decimal three four (2.34) meters;

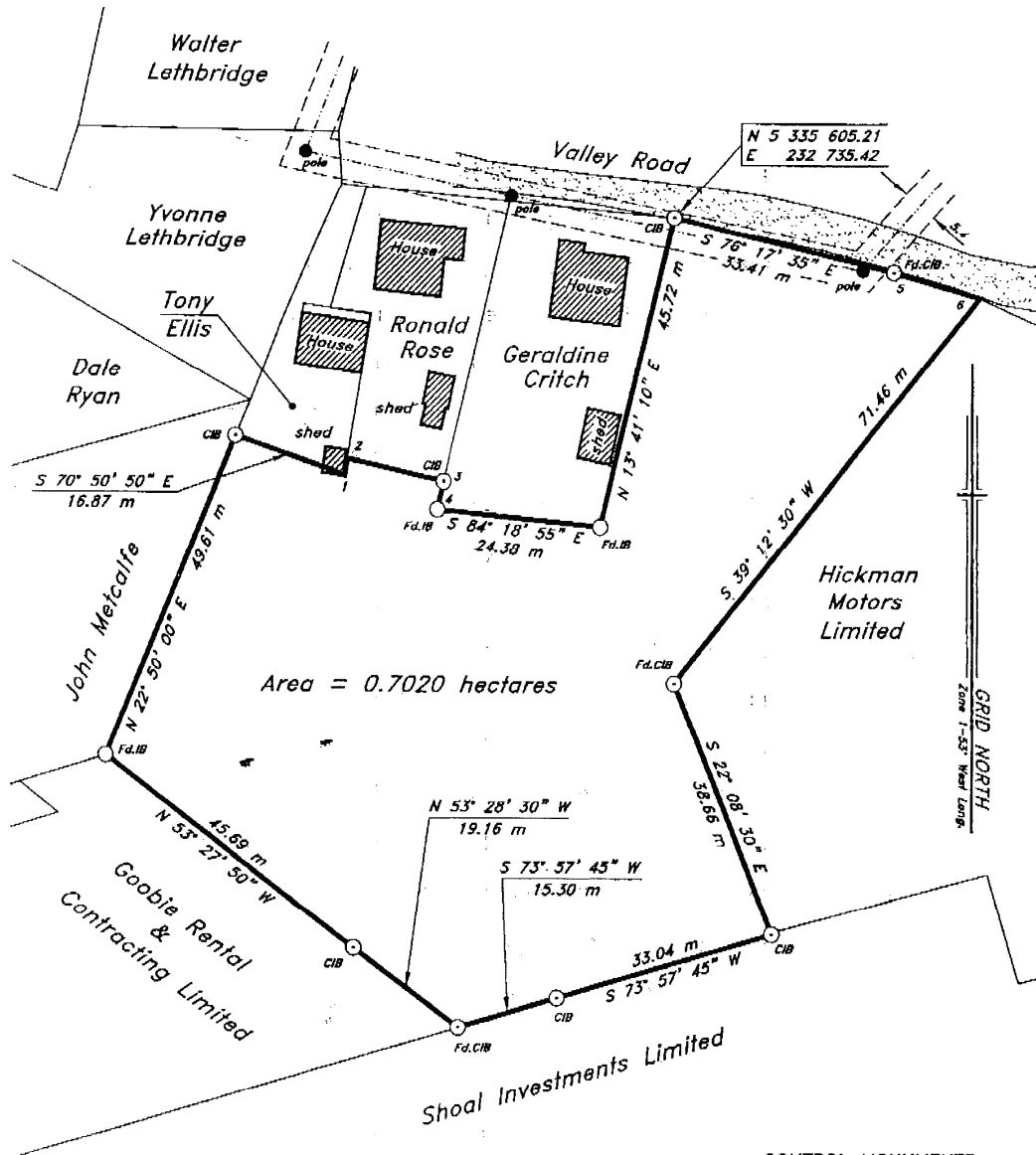
THENCE by property of Ronald Rose South seventy-seven degrees thirty-seven minutes zero zero seconds East (S 77 37 00 E) fourteen decimal four nine (14.49) meters;

THENCE by property of Geraldine Critch South thirteen degrees twenty minutes fifty seconds West (S 13 20 50 W) four decimal zero four (4.04) meters, South eighty-four degrees twenty minutes zero zero seconds East (S 84 20 00 E) twenty-four decimal three eight (24.38) meters, North thirteen degrees forty-one minutes zero zero seconds East (N 13 41 00) forty-five decimal seven two (45.72) meters, more or less to the point of beginning and containing and area of 0.7020 hectares.

ALL BEARINGS refer to the above mentioned Projection.

THE ABOVE described piece or parcel of land is subject to a portion of a Service Line Easement (5.4 meters wide) extending along a portion of the northern most boundary as shown on the plan hereto attached

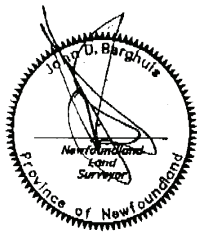
Control Surveys LTD



NOTE  $\odot$  CIB CAPPED IRON BAR  
 $\circ$  IRON BAR  
 Fd. FOUND  
 - NO SCALE FACTOR USED  
 ALL DISTANCES ARE HORIZONTAL GROUND DISTANCES

CONTROL MONUMENTS

	(NAD-83)	
78G2005	N 5 335 134.929	E 233 575.531
97G7063	N 5 335 135.669	E 233 284.982



(((CONTROL SURVEYS LTD. NEWFOUNDLAND LAND SURVEYORS 39 MARINE DRIVE, A5A 1M3 - Tel: (709) 466-3886	
Clareville,	Newfoundland
SURVEY ON BEHALF OF EDISON STANLEY	
Clareville	Newfoundland
SCALE: 1 : 750	JOB No.: 2010-121
DATE: April 21, 2010	SURVEY BY: J.D.B.

**2010 01T 2687**  
**IN THE SUPREME COURT OF**  
**NEWFOUNDLAND AND LABRADOR**  
**TRIAL DIVISION**

Notice of Application under the *Quieting of Titles Act*, RSNL 1990, cQ-3, as amended;

IN THE MATTER OF an Application of LEWISPORTE HOLDINGS LIMITED to have title to that piece or parcel of land situate and being on the western side of Airport Road, in the City of St. John's, in the Province of Newfoundland and Labrador, containing in all an area of Zero Decimal Nine One Nine Three Hectares (0.9193 ha) more or less, investigated and declared under the *Quieting of Titles Act*, RSNL 1990, cQ-3.

**NOTICE**

NOTICE is hereby given to all parties that LEWISPORTE HOLDINGS LIMITED, a body corporate, duly incorporated pursuant to the laws of the Province of Newfoundland and Labrador, having registered offices at the City of St. John's, in the Province of Newfoundland and Labrador (hereinafter called the "Owner") has applied to the Supreme Court of Newfoundland and Labrador, Trial Division, to have investigated ALL THAT piece or parcel of land situate and being on the western side of Airport Road, in the City of St. John's, in the Province of Newfoundland and Labrador, containing in all an area of Zero Decimal Nine One Nine Three Hectares (0.9193 ha) more or less, and being abutted as follows, that is to say

ALL that piece or parcel of land situate and being on the western side of Airport Road, in the City of St. John's, and being bounded and abutted as follows, that is to say:

BEGINNING at a point, said point having M.T.M. Grid Co-ordinates (C.M. 53°) [NAD 83] of N 5 274 119.476 and E 324 201.674;

THENCE RUNNING South eighty five degrees eighteen minutes zero seconds West (S85°18'00"W), a distance of 13.747 meters by land of Comet Inv. Co. Ltd. [V 3964 F 280] to a point;

THENCE turning and running South eighty nine degrees forty four minutes one seconds West (S89°44'01"W), a distance of 8.653 meters by land of Comet Inv. Co. Ltd. [V 3964 F 280] to a point;

THENCE turning and running North twenty one degrees fifteen minutes eleven seconds East (N21°15'11"E), a distance of 4.045 meters by land of HMQ In Right of Newfoundland and Labrador to a point;

THENCE turning and running North seventy one degrees twelve minutes twenty three seconds West (N71°12'23"W), a distance of 18.556 meters by land of HMQ In Right of Newfoundland and Labrador to a point;

THENCE turning and running South eighty four degrees four minutes zero seconds West (S84°04'00"W), a distance

of 37.094 meters by land of HMQ In Right of Newfoundland and Labrador to a point;

THENCE turning and running South eighty one degrees twenty one minutes zero seconds West (S81°21'00"W), a distance of 16.459 meters by land of HMQ In Right of Newfoundland and Labrador to a point;

THENCE turning and running South seventy six degrees forty two minutes twenty seconds West (S76°42'20"W), a distance of 11.775 meters by land of HMQ In Right of Newfoundland and Labrador to a point;

THENCE turning and running South seventy degrees forty three minutes twenty nine seconds West (S70°43'29"W), a distance of 7.222 meters by land of HMQ In Right of Newfoundland and Labrador to a point;

THENCE turning and running North nine degrees twenty one minutes twelve seconds West (N09°21'12"W), a distance of 89.678 meters by the Eastern Limits of Portugal Cove Road to a point;

THENCE turning and running North thirty three degrees forty three minutes thirty seconds East (N33°43'30"E), a distance of 17.350 meters by land of Estate of John Butler to a point;

THENCE turning and running South seventy nine degrees twenty one minutes fifty three seconds East (S79°21'53"E), a distance of 27.312 meters by land of Estate of John Butler to a point;

THENCE turning and running South seventy two degrees thirty six minutes fifty two seconds East (S72°36'52"E), a distance of 9.454 meters by land of Courtney Young [149303 & 28542, 117 Airport Road] to a point;

THENCE turning and running South sixty six degrees forty nine minutes twenty five seconds East (S66°49'25"E), a distance of 2.987 meters by land of Courtney Young [149303 & 285342, 117 Airport Road] to a point;

THENCE turning and running South sixty six degrees fifty three minutes forty two seconds East (S66°53'42"E), a distance of 29.889 meters by land of Courtney Young [149303 & 285342, 117 Airport Road] to a point;

THENCE turning and running South sixty one degrees forty six minutes forty seven seconds East (S61°46'47"E), a distance of 53.574 meters by land of John Butler [R 1601 F 2634, 119 Airport Road] to a point;

THENCE turning and running South thirty five degrees ten minutes zero seconds East (S35°10'00"E), a distance of 3.662 meters by land of John Butler [R 1601 F 2634, 119 Airport Road] to a point;

THENCE turning and running along a curve to the left having a radius of 693.765 meters, an arc of 51.014 meters and a chord of South zero degrees thirty eight minutes fifty three seconds West (S00°38'53"W), a distance of 51.002 meters by the Western Limits of Airport Road to the PLACE OF BEGINNING and containing in all an area of 0.9193 hectares as more particularly described and delineated on plan 10069, 14 Apr 10 hereto annexed.

ALL bearings are referred to Grid North.

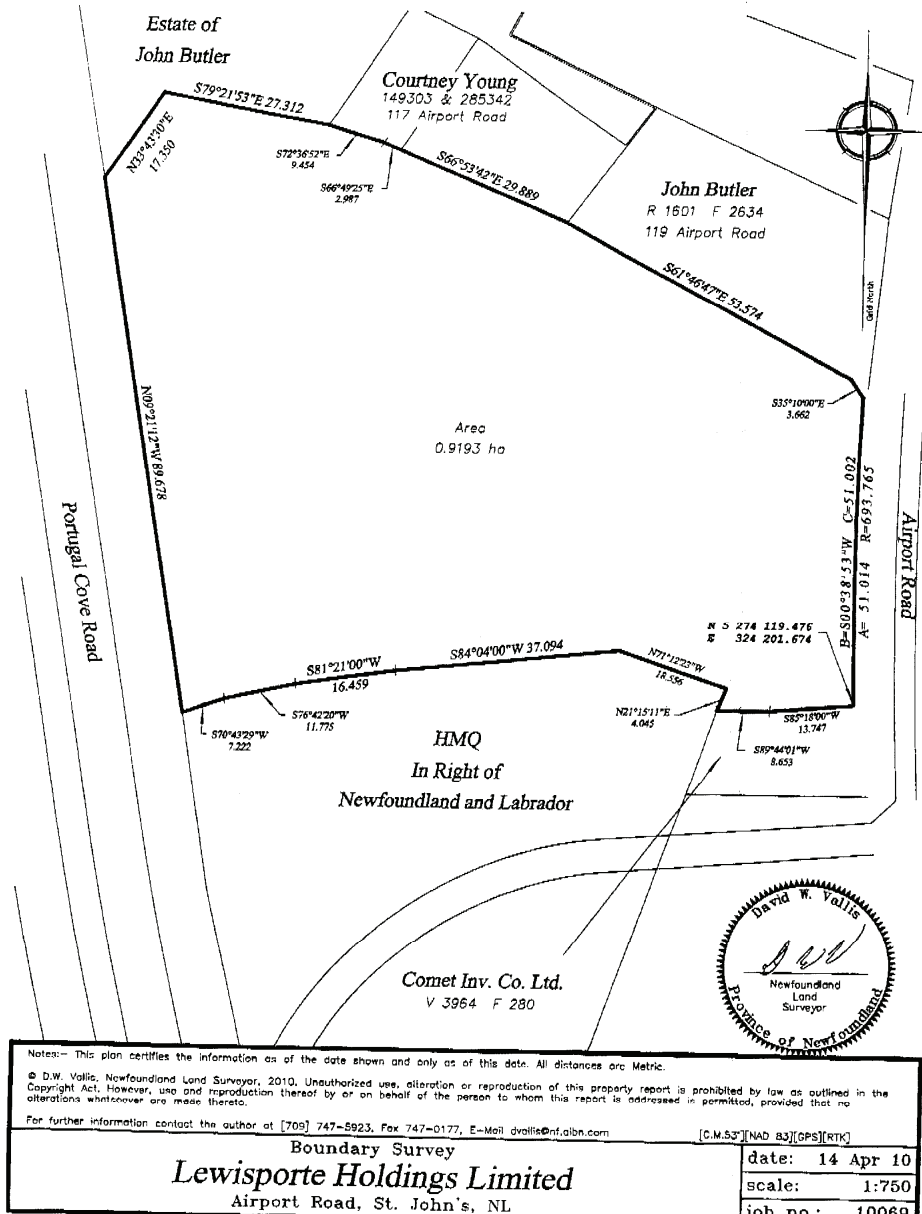
All persons having title adverse to the said title claims by the Owner shall file in the Registry of the Supreme Court of Newfoundland and Labrador, Trial Division, particulars of such adverse claim and serve the same, together with an

Affidavit verifying the same, on or before the 18<sup>th</sup> day of June, 2010, after which date no party having a claim shall be permitted to file the same or be heard except by leave of the Court and subject to such conditions as the

Court may deem just. All adverse claims shall then be registered on such manner as the Supreme Court may direct.

BURGESS LAW OFFICES  
 Solicitors for the Petitioner/Applicant  
 PER: R. Paul Burgess

ADDRESS FOR SERVICE:  
 Suite 308, Terrace on the Square  
 P.O. Box 23196  
 St. John's, NL A1B 4J9





**2010 05T 0116**  
**IN THE SUPREME COURT OF**  
**NEWFOUNDLAND AND LABRADOR**  
**TRIAL DIVISION**

**SCHEDULE "A"**

**William Chatman**  
**Bunyan's Cove, NL**

Notice of Application under the *Quieting of Titles Act*, RSNL 1990, cQ-3, as amended;

Notice is hereby given to all parties that WILLIAM CHATMAN, of Bunyan's Cove, in the District of Terra Nova, in the Province of Newfoundland and Labrador, has applied to the Supreme Court, Trial Division, Gander, to have title to all that piece or parcel of property situate at Bunyan's Cove, in the Province of Newfoundland and Labrador, which property is more particularly described in Schedule "A" hereto annexed and shown in Schedule "B" hereto annexed.

ALL BEARINGS aforementioned, for which WILLIAM CHATMAN claims to be the owner investigated and for a Declaration that he is the absolute owner in fee simple in possession and the said William Chatman has been ordered to public Notice of Application as required by the above named Act.

All persons having title adverse to the said title claimed by the said William Chatman shall file in the Registry of the Supreme Court of Newfoundland and Labrador, Trial Division, Gander, particulars of such adverse claim and serve the same together with an Affidavit verifying same on the undersigned Solicitors for the Petitioner on or before the 13<sup>th</sup> day of June, 2010, after which date no party having any claim shall be permitted to file the same or to be heard except by special leave of the Court and subject to such conditions as the Court may deem just.

All such adverse claims shall be investigated then in such manner as the Supreme Court of Newfoundland, Trial Division, Gander, may direct.

DATED AT Clarenville, in the Province of Newfoundland and Labrador, this 14<sup>th</sup> day of May, 2010.

MILLS PITTMAN LAW OFFICES  
Solicitors for the Applicant  
PER: Joseph Twyne

ADDRESS FOR SERVICE:  
Suite 201, 111 Manitoba Drive  
Clarenville, NL A5A 1K2  
Tel: (709) 466-2641  
Fax: (709) 466-7109

ALL THAT piece or parcel of land situate and being in the Community of Bunyan's Cove, in the Electoral District of Terra Nova abutted and bounded as follows:

THAT IS TO SAY: Beginning at a point on the northwestern limit of Bunyan's Cove Road (20 meters wide), the said point having coordinates N 5 363 286.339 meters and E 231 342.524 meters of the Three Degree Modified Transverse Mercator Projection (NAD-83) for the Province of Newfoundland and Labrador.

THENCE along the said north western limit of Bunyan's Cove Road South fifty-six degrees zero six minutes zero five seconds West (S 56 06 06 W) seven decimal seven zero nine (7.709) meters;

THENCE by property of Brian Hobbs North forty-three degrees twenty-three minutes thirty seconds West (N 43 23 30 W) sixty-six decimal six four zero (66.640);

THENCE by property of Darrin and Dana Hobbs North twenty-nine degrees fifty-four minutes thirty-five seconds West (N 29 54 35 W) fifty-nine decimal nine two six (59.926) meters, South seventy-one degrees ten minutes fifteen seconds West (S 71 10 15 W) sixteen decimal six zero eight (16.608) meters, north forty-four degrees eleven minutes fifteen seconds West (N 44 11 15 W) thirty decimal six one four (30.614) meters;

THENCE along the Old Road through Bunyan's Cove (20 meters wide) North seventy-one degrees eighteen minutes fifteen seconds East (N 71 18 15 E) forty-five decimal eight two zero (45.820) meters;

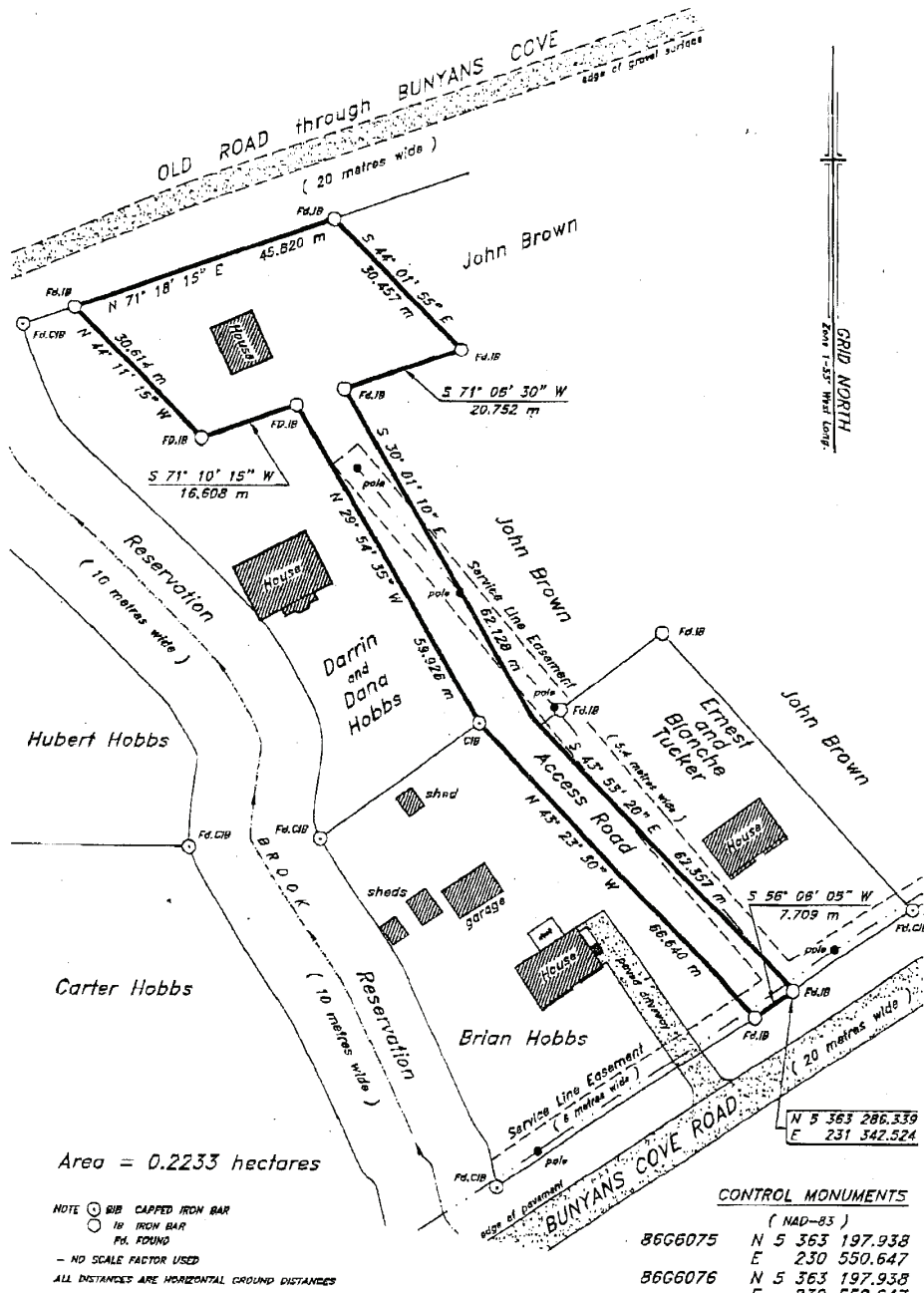
THENCE by property of John Brown South forty-four degrees zero one minutes fifty-five seconds East (S 44 01 55 E) thirty decimal four five seven (30.457) meters, South seventy-one degrees zero six minutes thirty seconds West (S 71 06 30 W) twenty decimal seven five two (20.752) meters, South thirty degrees zero one minute ten seconds East (S 30 01 10 E) sixty-two decimal one two eight (62.128) meters;

THENCE by the property of John Brown and by property of Ernest and Blanche Tucker South forty-three degrees fifty-three minutes twenty seconds East (S 43 53 20 E) sixty-two decimal three five seven (62.357) meters, more or less to the point of beginning and containing an area of 0.2233 hectares.

The above described piece or parcel of land is subject to a portion of a Service Line Easement (6 meters wide) extending along the southeastern most boundary of the property and also a Service Line Easement (5.4 meters wide) extending through the property as shown on the plan hereto attached.

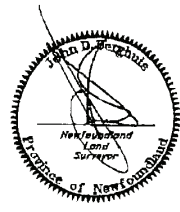
All bearings refer to the above mentioned Projection  
(Control Surveys Ltd)

SCHEDULE "B"



Area = 0.2233 hectares

NOTE:   
 ○ BIB CAPPED IRON BAR  
 □ IRON BAR  
 Fd. FOUND  
 - NO SCALE FACTOR USED  
 ALL DISTANCES ARE HORIZONTAL GROUND DISTANCES



(((CONTROL SURVEYS LTD. NEWFOUNDLAND LAND SURVEYORS 39 MARINE DRIVE - ASA 1MS - Tel: (709) 488-3666 Clarenville Newfoundland	
SURVEY ON BEHALF OF WILLIAM CHATMAN Bunyans Cove Newfoundland	
SCALE: 1 : 750	JOB No.: 99-199
DATE: Revised January 7, 2010	SURVEY BY: J.D.B.

**2010 01T 1643**  
**IN THE SUPREME COURT OF**  
**NEWFOUNDLAND AND LABRADOR**  
**TRIAL DIVISION**

IN THE MATTER of *The Quieting of Titles Act*, RSNL 1990, cQ-3, as amended;

AND IN THE MATTER of those pieces or parcels of Land located at Densmore's Lane, Kilbride, in the City of St. John's, in the Province of Newfoundland and Labrador

AND IN THE MATTER of an Application of MICHAEL DENSMORE of Kilbride, of the city of St. John's, in the Province of Newfoundland and Labrador, Retired Teacher and MARY DYKE of St. John's, aforesaid, Administratrix of the Estate & Effects of Stephen Densmore, Retired Office Worker.

Notice of Application under the *Quieting of Titles Act*, RSNL 1990, cQ-3, as amended;

NOTICE is hereby given of all parties that MICHAEL DENSMORE and MARY DYKE, as Administratrix of the Estate and Effects of STEPHEN DENSMORE have applied to the Supreme Court of Newfoundland & Labrador, Trial Division to have title to All THOSE pieces or parcels of land situate and being to wit: Densmore's Lane, Kilbride, in the city of St. John's, in the Province of Newfoundland and Labrador, Canada and as more particularly described in Schedule "A" and Schedule "B" hereto annexed of which the said Michael Densmore and The Estate of Stephen Densmore claim to be the owners investigated and for a declaration that the said Michael Densmore and the Estate of Stephen Densmore are the absolute owners thereof and the Court having ordered that; Notice of the said Application to be published as required under the above-named Act.

All persons having a claim adverse to this title claimed by the said Michael Densmore and the Estate of Stephen Densmore shall file in the Registry of the Supreme Court of Newfoundland & Labrador, Trial Division, at the Court House, Duckworth Street, St. John's, Newfoundland and Labrador, A1C 5M3 particulars of such adverse claim, together with an Affidavit verifying same and serve same on the undersigned Solicitor for the Applicants on or before the 7<sup>th</sup> day of June, 2010, after which date no party having any claim shall be permitted to file the same or to be heard except by special leave of the court and subject to conditions the court may deem just.

All such adverse claims shall then be investigated in such manner as the said Supreme Court of Newfoundland & Labrador may direct.

Dated at St. John's, in the Province of Newfoundland and Labrador, this 22<sup>nd</sup> day of March, 2010.

JOHN W. MCGRATH LAW OFFICE  
Solicitor for the Applicants  
PER: John W. McGrath, Q.C.

ADDRESS FOR SERVICE:

18 Argyle Street  
St. John's, NL  
A1A 1V3  
Tel: (709) 726-5250  
Fax: (709) 738-0614

**LEGAL DESCRIPTION**

Land of Michael Densmore and the Estate of STEPHEN DENSMORE Densmore's Lane Kilbride, St. John's, Newfoundland and Labrador.

ALL THAT piece or parcel of land, situate and being on the western side of a Right of Way to the south of Densmore's Lane, in the City of St. John's, in the Province of Newfoundland and Labrador, Canada, and being bounded and abutted as follows;

THAT IS TO SAY: beginning at a point on the western side of the said Right of Way, said point having coordinates of N 5,264,252.117 metres and E 323,956.876 metres of the Three Degree Modified Transverse Mercator Projection NAD - 83 for the Province of Newfoundland and Labrador;

THENCE along the southern end of the Right of Way and by property of Bernard Edward Healy S 50° 41' 25" E for a distance of 11.071 metres;

THENCE by property of Bernard Edward Healy S 49° 28' 00" E for a distance of 28.880 metres;

THENCE S 46° 23' 07" E for a distance of 46.665 metres;

THENCE S 40° 59' 00" E for a distance of 22.600 metres;

THENCE S 55° 10' 43" E for a distance of 14.342 metres;

THENCE by property now or formerly Densmore Estate S 39° 32' 20" W for distance of 217.581 metres;

THENCE by property of Michael V. Tracey N 54° 19' 00" W for a distance of 48.657 metres;

THENCE N 55° 33' 00" W for a distance of 38.836 metres;

THENCE by a Right of Way by property now or formerly William Bulger and by property now or formerly Martin Aylward N 13° 13' 20" E for a distance of 44.015 metres;

THENCE by property now or formerly Martin Aylward N 54° 19' 25" W for a distance of 13.151 metres;

THENCE by property of Michael Densmore and Stephen Densmore N 33° 34' 00" E for a distance of 62.490 metres;

THENCE N 54° 08' 00" E for a distance of 55.660 metres;

THENCE N 41° 28' 00" E for a distance a distance of 29.900 metres;

THENCE N 24° 53' 00" E for a distance of 42.780 metres;

THENCE N 28° 37' 00" E for a distance of 4.850 metres, more or less, to the point of beginning and containing an area of 2.59 hectares more or less. Which land is more

particularly shown on the plan hereto attached. All bearings being referred to the above mentioned projection. All linear measurements are horizontal ground distances. This description and accompanying plan, Job # 8241 of Brown & Way Surveys form an integral part of the returns and are not separable. There is a power line easement crossing the southern boundary as shown on the said attached plan.

AND ALL THAT piece or parcel of land situate and being to the south of Densmore's Lane, in the city of St. John's, in the Province of Newfoundland and Labrador, Canada, and being bounded and abutted as follows: That is to say: beginning at a point to the south of Densmore's Lane, said point having coordinates of N 5,264,168.904 metres and E 324,047.763 metres of the Three Degree Modified Transverse Projection NAD – 83 for the Province of Newfoundland and Labrador Thence by property of Bernard Edward Healy and by property of the City of St. John's S 55° 10' 43" E for a distance of 22.174 metres;

Thence by the City of St. John's S 45° 36' 07" E for a distance of 46.238 metres;

Thence S 49° 39' 31" E for a distance of 57.241 metres;

Thence S 48° 25' 37" E for a distance of 32.294 metres;

Thence S 53° 14' 13" E for a distance of 17.678 metres;

Thence S 43° 11' 25" E for a distance of 48.798 metres;

Thence S 52° 00' 43" E for a distance of 20.726 metres;

Thence S 56° 28' 07" E for a distance of 81.351 metres

Thence by property now or formerly Stephen Densmore S 51° 47' 22" E for a distance of 50.008 metres;

Thence S 34° 14' 38" W for a distance of 178.110 metres;

Thence by property of Michael V. Tracey N 52° 39' 00" W for a distance of 53.780 metres;

Thence N 50° 38' 00" W for a distance of 82.580 metres;

Thence N 57° 01' 00" W for a distance of 17.950 metres;

Thence N 55° 10' 00" W for a distance of 76.280 metres;

Thence N 60° 26' 00" W for a distance of 72.550 metres;

Thence N 60° 35' 00" W for a distance of 53.230 metres;

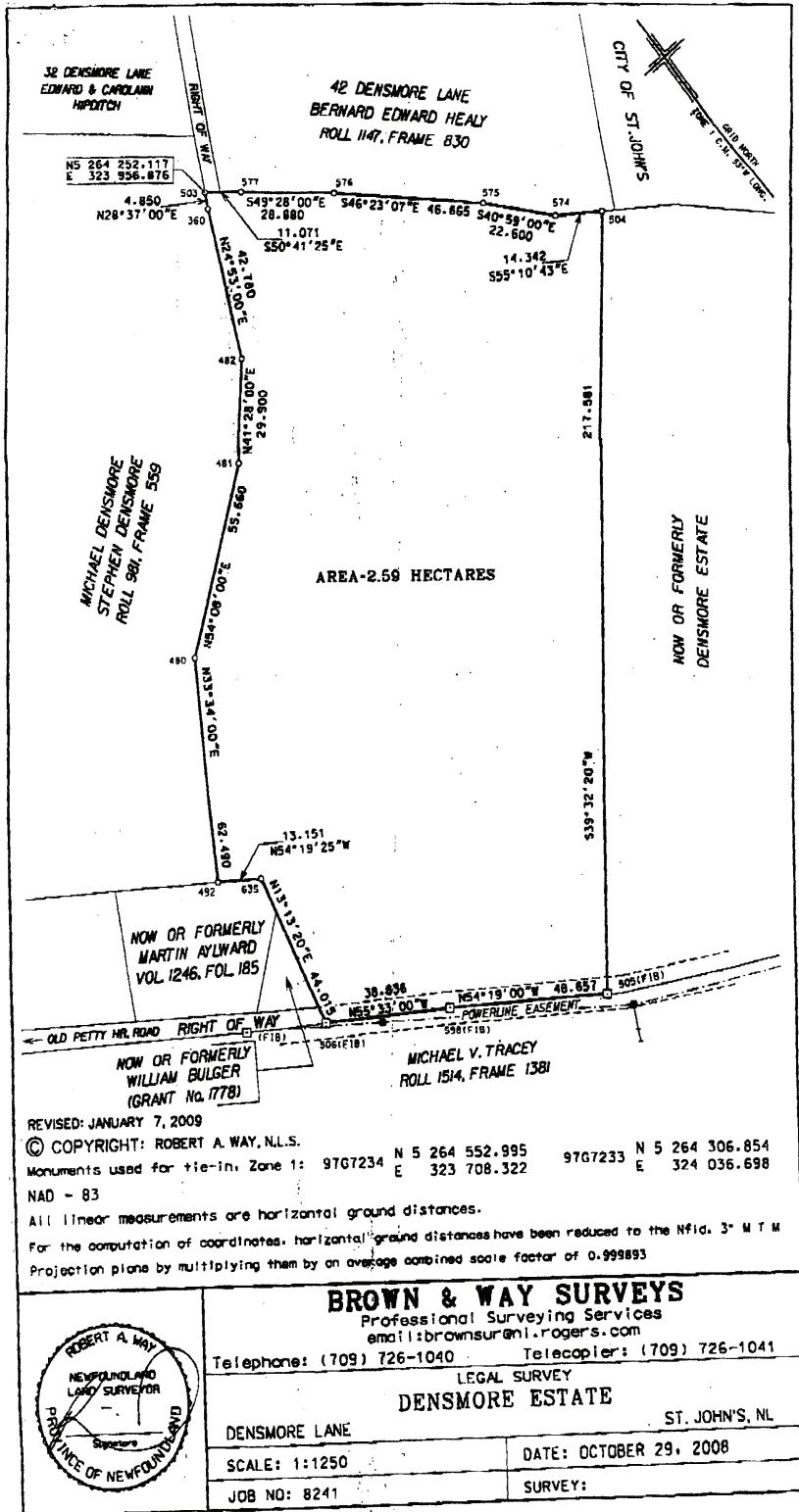
Thence N 61° 11' 00" W for a distance of 34.920 metres;

Thence N 54° 19' 00" W for a distance of 3.822 metres;

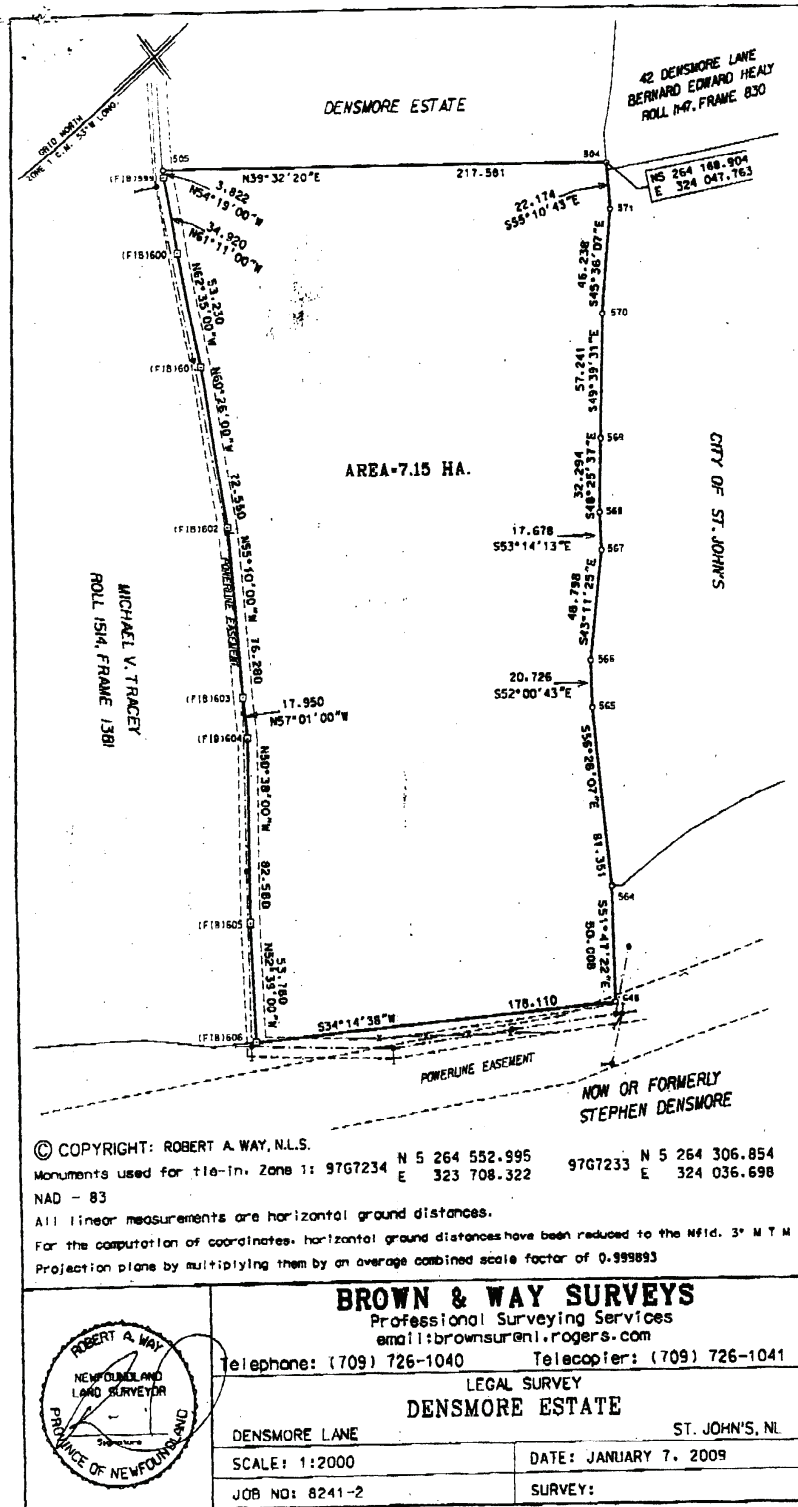
Thence by Densmore Estate N 39° 32' 20" E for a distance of 217.581 metres, more or less, to the point of beginning and containing an area of 7.15 hectares, more or less. Which land is more particularly shown on the plan hereto attached.

All bearings being referred to the above mentioned projection. All linear measurements are horizontal ground distances. This description and accompany plan, Job # 8241-2 of Brown & Way Surveys, form and integral part of the returns and are not separable. There is a power line easement crossing the southern and eastern boundaries as shown on the said attached plan.

SCHEDULE "A"



SCHEDULE "B"



**TRUSTEE ACT**

**ESTATE NOTICE**

IN THE MATTER OF the Estate of DONALD STANLEY EDGAR, late of St. John's, in the Province of Newfoundland and Labrador, Deceased,

All persons claiming to be creditors of or who have any claims or demands either as beneficiaries or next of kin (by blood, legal adoption or marriage) upon or affecting the Estate of Donald Stanley Edgar, who died at St. John's, in the Province of NL, on or about December 6<sup>th</sup> 2009, are hereby requested to send particulars thereof in writing, duly attested, to the Registrar of the Supreme Court, Viking Building 401-136 Crosbie Road, St. John's, NL, A1B 3K3, Administrator of the Estate on or before July 15<sup>th</sup> 2010, after which date the said Administrator will proceed to distribute the Estate having regard only to the claims of which he then shall have had notice.

DATED at St. John's, NL this 12<sup>th</sup> day of May, 2010.

REGISTRAR OF THE SUPREME COURT,  
Administrator of the Estate of  
Donald Stanley Edgar

**ADDRESS FOR SERVICE**

Supreme Court  
Viking Building  
401-136 Crosbie Road  
St. John's, NL, A1B 3K3

May 21

---

**ESTATE NOTICE**

IN THE MATTER OF the Estate of DONALD MAXWELL CRITCH, late of St. John's, in the Province of Newfoundland and Labrador, Deceased,

All persons claiming to be creditors of or who have any claims or demands either as beneficiaries or next of kin (by blood, legal adoption or marriage) upon or affecting the Estate of DONALD MAXWELL CRITCH, who died at St. John's, in the Province of NL, on or about November 9<sup>th</sup> 2009, are hereby requested to send particulars thereof in writing, duly attested, to the Registrar of the Supreme Court, Viking Building 401-136 Crosbie Road, St. John's, NL, A1B 3K3, Administrator of the Estate on or before July 15<sup>th</sup> 2010, after which date the said Administrator will proceed to distribute the Estate having regard only to the claims of which he then shall have had notice.

DATED at St. John's, NL this 12<sup>th</sup> day of May, 2010.

REGISTRAR OF THE SUPREME COURT,  
Administrator of the Estate of  
Donald Maxwell Critch

**ADDRESS FOR SERVICE**

Supreme Court  
Viking Building  
401-136 Crosbie Road  
St. John's, NL, A1B 3K3

May 21

---

**ESTATE NOTICE**

IN THE MATTER OF the Estate of ELIZABETH (BETTY) L. NORRIS late of Witless Bay in the Province of Newfoundland and Labrador, Deceased,

All persons claiming to be creditors of or who have any claims or demands either as beneficiaries or next of kin (by blood, legal adoption or marriage) upon or affecting the Estate of Elizabeth (Betty) L. Norris, who died at St. John's, NL on or about the 2<sup>nd</sup> day of November 2009, are hereby requested to send particulars thereof in writing, duly attested, to the Registrar of the Supreme Court, Estates Division, Viking Building, 136 Crosbie Road, Suite 401, St. John's, NL, A1B 3K3, Administrator of the Estate of Elizabeth (Betty) L. Norris, on or before June 18<sup>th</sup> 2010, after which date the said Administrator will proceed to distribute the Estate having regard only to the claims of which he then shall have had notice.

DATED at St. John's, in the Province of NL, this 10<sup>th</sup> day of May, 2010

REGISTRAR OF THE SUPREME COURT,  
Administrator, with will annexed,  
of the Estate of Elizabeth (Betty) L. Norris

**ADDRESS FOR SERVICE**

Supreme Court  
Viking Building  
401-136 Crosbie Road  
St. John's, NL, A1B 3K3

May 21

---

**ESTATE NOTICE**

IN THE MATTER OF the Estate of MARIE THERESA SQUIRES, late of St. John's, in the Province of Newfoundland and Labrador, Deceased,

All persons claiming to be creditors of or who have any claims or demands either as beneficiaries or next of kin (by blood, legal adoption or marriage) upon or affecting the Estate of Marie Theresa Squires, Gentlewoman, who died at St. John's, NL on or about January 16<sup>th</sup> 2010, are hereby requested to send particulars thereof in writing, duly attested, to the Registrar of the Supreme Court, 136 Crosbie Road, Suite 401, St. John's, NL, A1B 3K3, Administrator of the Estate of Marie Theresa Squires, on or before June 22<sup>nd</sup> 2010, after which date the said Administrator will proceed to distribute the Estate having regard only to the claims of which he then shall have had notice.

DATED at St. John's, NL this 11<sup>th</sup> day of May, 2010

REGISTRAR OF THE SUPREME COURT,  
Administrator of the Estate of  
Marie Theresa Squires

ADDRESS FOR SERVICE

Supreme Court  
Viking Building  
401-136 Crosbie Road  
St. John's, NL, A1B 3K3

May 21

---

**ESTATE NOTICE**

**IN THE MATTER OF** the Estate of MARY CONCEPTA HANN, late of Freshwater, Placentia Bay, in the Province of Newfoundland and Labrador, Deceased,

All persons claiming to be creditors of or who have any claims or demands either as beneficiaries or next of kin (by blood, legal adoption or marriage) upon or affecting the Estate of Mary Concepta Hann, Gentlewoman, who died at Freshwater, Placentia Bay, NL on or about January 17<sup>th</sup> 2010, are hereby requested to send particulars thereof in

writing, duly attested, to the Registrar of the Supreme Court, 136 Crosbie Road, Suite 401, St. John's, NL, A1B 3K3, Administrator of the Estate of Mary Concepta Hann, on or before June 22<sup>nd</sup> 2010, after which date the said Administrator will proceed to distribute the Estate having regard only to the claims of which he then shall have had notice.

DATED at St. John's, NL this 11<sup>th</sup> day of May, 2010

Registrar of the Supreme Court,  
Administrator of the Estate of  
Mary Concepta Hann

ADDRESS FOR SERVICE

Supreme Court  
Viking Building  
401-136 Crosbie Road  
St. John's, NL, A1B 3K3

May 21

---



CHANGE OF NAME ACT

Legal Name Changes  
 Processed During the Period  
 APRIL 2010

Under the authority vested in me by The Change of Name Act, 2009 SNL 2009 Chapter C-8-1,  
 I hereby certify that the following names have been changed.

<u>Former Name</u>	<u>Present Name</u>	<u>Address</u>
SMITH, CALLIE AMELIA PENNEY	PENNEY SMITH, CALLIE AMELIA	GANDER
KING, ERICA DINAH	FAGAN, ERICA DINAH	CONCEPTION BAY SOUTH
KING, NATASHA LILLIAN	FAGAN, NATASHA LILLIAN	CONCEPTION BAY SOUTH
KING, ADAM BRIAN	HORWOOD, ADAM BRIAN	GRAND FALLS-WINDSOR
BROWN, THOMAS PHILIP	BROWNE, THOMAS PHILLIP	GRAND FALLS-WINDSOR
BILES, VANESSA NADINE	GOULD, VANESSA NADINE	PORT SAUNDERS
CROCKER, ISAAC SIMEON	PARSONS, SIMEON ISAAC	BONNE BAY
NAPEO, JOSEPH HENRI	MISTENAPEO, HENRY JOSEPH	NATUASHISH
KING, RIELLY DAVID	STRINGER, RIELLY DAVID	POUCH COVE
KING, TYLER AARON	STRINGER, TYLER AARON	POUCH COVE
KING, BRANDON JOSEPH	STRINGER, BRANDON JOSEPH	POUCH COVE
HILLIER, DALE ROY PETER	BUFFETT, DALE ROY PETER	POUCH COVE
MCGREGOR, CHRISTIAN ROBERT MAXWELL	BUFFETT, DALE ROY PETER	FORTUNE
PATEY, JENNIFER	DROVER, CHRISTIAN ROBERT MAXWELL	CONCEPTION BAY SOUTH
ABDUL AMEER, AMEER KADHIM	STYLES, JENNIFER	HAWKES BAY
WIMBELTON, HANNAH SARAH	AL-SHAMMAA, AMEER KADHIM ABUL AMEER	GRAND FALLS-WINDSOR
HOUSE, CODY MICHAEL	MARTIN, HANNAH SARAH	SHOE COVE
BERTRAND, MARK GREGORY JOSEPH	BRADY, CODY MICHAEL	GRAND BANK
BERTRAND, JULIE ELIZABETH	KING, MARK GREGORY JOSEPH	LONG COVE
HANCOCK, ETHELBERG ROBERT	KING, JULIE ELIZABETH	LONG COVE
SMITH, NORMA JEAN	HANCOCK, ROBERT ETHELBERG	SANDRINGHAM
O'KEEFE-NEWPORT, HALEY NICOLE	O'KEEFE, NORMA JEAN	PLACENTIA
O'BRIEN, DANA NICOLE	ELLIOTT, DANA NICOLE	MARYSTOWN
MICHEL, PAUL JOSEPH	RICH, PAUL JOSEPH	ST. JOHN'S
COMBDEN, JORDAN RODNEY DEAN	PELLEY, JORDAN RODNEY DEAN	SHESHATSHIU
MORGAN, TAYLOR MADISON	DALE, TAYLOR MADISON	SUMMERFORD
SMITH, MELISSA SARAH	MORGAN, MELISSA SARAH	COLEY'S POINT
TAYLOR, LONDON COLE	TAYLOR-LEWIS, LONDON COLE	ROACHES LINE
BESKORWAYNY, ELIZABETH ARLENE	GARNIER, ELIZABETH ARLENE	ST. JOHN'S
CULL, CHEYENNE MADISON	EDMUNDS-CULL, CHEYENNE MADISON	ST. GEORGES
ROWSELL, JONATHAN MICHAEL TYLER	PARSONS, JONATHAN MICHAEL TYLER	CORNER BROOK
KENDALL, EARLE JOHN	KENDALL, EARL JOHN	GRAND FALLS-WINDSOR
HARVEY, KAITLIN MAUREEN	RYAN, KAITLIN MAUREEN	GAULTOIS
		FERRYLAND



Ken Mullaly  
 Registrar, Vital Statistics Division  
 Department of Government Services

KEN MULLALY  
 Registrar



# THE NEWFOUNDLAND AND LABRADOR GAZETTE

## PART II

### SUBORDINATE LEGISLATION FILED UNDER THE STATUTES AND SUBORDINATE LEGISLATION ACT

---

Vol. 85

ST. JOHN'S, FRIDAY, MAY 21, 2010

No. 20

---

## NEWFOUNDLAND AND LABRADOR

### REGULATIONS

NLR 26/10

NLR 27/10



**NEWFOUNDLAND AND LABRADOR  
REGULATION 26/10**

*Interim Development Regulations, 2003  
(Amendment)  
under the  
Urban and Rural Planning Act, 2000*

*(Filed May 12, 2010)*

Under the authority of section 34 of the *Urban and Rural Planning Act, 2000*, I make the following regulations.

Dated at St. John's, May 6, 2010.

Dianne Whalen  
Minister of Municipal Affairs

**REGULATIONS**

*Analysis*

1. Sch. Amdt.

NLR 137/03  
as amended

**1. The Schedule to the *Interim Development Regulations, 2003* is amended by adding "St. Jacques-Coombs Cove Municipal Planning Area" immediately after "Small Point-Broad Cove-Black Head-Adam's Cove Municipal Planning Area".**

©Earl G. Tucker, Queen's Printer



## NEWFOUNDLAND AND LABRADOR REGULATION 27/10

*St. Jacques-Coombs Cove Municipal Planning Area*  
under the  
*Urban and Rural Planning Act, 2000*

*(Filed May 18, 2010)*

Under the authority of 11 of the *Urban and Rural Planning Act, 2000*, I define the following area as the St. Jacques-Coombs Cove Municipal Planning Area.

Dated at St. John's, May 6, 2010.

Dianne C. Whalen  
Minister of Municipal Affairs

### PLANNING AREA

Beginning at a point in the eastern shoreline of Great Bay De L'eau, that point being the most western point of land at the northern entrance of Wreck Cove and then running due east a distance of 15,400 metres, more or less, to a point on the western shoreline of Fortune Bay;

Then running in a generally southerly direction along the point of land at the eastern entrance to St. Jacques Harbour;

Then running in a generally westerly direction along the sinuosities of the southern shoreline of Fortune Bay by way of the harbour of St. Jacques, Otter Cove Point, Blue Pinion Harbour, English Harbour, English Harbour Back Cove, the harbour of Great Ma Jambe, the harbour of Little Ma Jambe, Boxey Back Cove, Saucepan Cove, Boxey

Harbour, the shorelines of Boxey Point Promontory and St. John's Harbour to the most southern point of St. John's Head;

Then running in a generally northeasterly direction along the sinuosities of the eastern shoreline of Great Bay De L'eau by way of Coomb's Cove, Fox Harbour , Blunder Cove and Wreck Cove to the point of beginning.

All bearings being referred to the true meridian.

**©Earl G. Tucker, Queen's Printer**

## Index

### PART I

City of Corner Brook Act – Notices .....	167
Change of Name Act – Notice .....	191
Corporations Act – Notices .....	168
Land Act– Notice .....	178
Mineral Act – Notice .....	175
Quieting of Titles Act – Notices .....	178
Trustee Act– Notices .....	189
Urban and Rural Planning Act – Notices .....	175

### PART II

#### CONTINUING INDEX OF SUBORDINATE LEGISLATION

Title of Act and Subordinate Legislation made thereunder	CNLR or NL Reg.	Amendment	NL Gazette Date & Page No.
<b>Urban and Rural Planning Act</b>			
Interm Development Regulations, 2003 (Amdt)	NLR 26/10	Amends NLR 137/03 Sch. Amdt.	May 21/10 p.153
St. Jacques-Coombs Cove Municipal Planning Area	NLR 27/10	New	May 21/10 p.155

*The Newfoundland and Labrador Gazette* is published from the office of Earl G. Tucker, Queen's Printer.

Copy for publication must be received before **Friday, 4:30 p.m.**, seven days before publication, to ensure inclusion in next issue.

Advertisements should be typewritten or printed legibly, separate from covering letter. Number of insertions required must be stated and the names of all signing officers typewritten or printed.

Copy may be mailed to the address below, faxed to (709) 729-1900 or emailed to [queensprinter@gov.nl.ca](mailto:queensprinter@gov.nl.ca).

Advertising rates are available upon request. Subscription rate for *The Newfoundland and Labrador Gazette* is \$125.00 for 52 weeks plus applicable tax (\$131.25). Weekly issues of \$3.00 per copy, plus tax payable in advance.

All cheques, money orders, etc., should be made payable to THE NEWFOUNDLAND EXCHEQUER ACCOUNT and all correspondence should be addressed to: Office of the Queen's Printer, P. O. Box 8700, Ground Floor, East Block, Confederation Building, St. John's, NL A1B 4J6. Telephone (709) 729-3649. Fax: (709) 729-1900.

**Web Site:** <http://www.gs.gov.nl.ca/printer/index.html>

**Place your order by contacting:  
Office of The Queen's Printer  
Confederation Building, East Block  
St. John's, NL A1B 4J6  
Telephone: (709) 729-3649 Fax: (709) 729-1900  
email: [queensprinter@gov.nl.ca](mailto:queensprinter@gov.nl.ca)**

**Government Information Product  
Publication Rate Mail  
G.S.T. # R107442683**

**All requests for Subscription and Legislation MUST be prepaid.**