



THE NEWFOUNDLAND AND LABRADOR GAZETTE

PART I

PUBLISHED BY AUTHORITY

Vol. 85

ST. JOHN'S, FRIDAY, SEPTEMBER 24, 2010

No. 38

WINDING-UP AND RESTRUCTURING ACT

IN THE MATTER OF THE WINDING-UP OF THE INSURANCE BUSINESS IN CANADA OF RELIANCE INSURANCE COMPANY- CANADIAN BRANCH ("Reliance Canada")

IMPORTANT NOTICE TO POLICYHOLDERS, INSURED AND CLAIMANTS WITH POLICY LOSS CLAIMS

On December 3, 2001, the Ontario Superior Court of Justice (the "Court") ordered the winding-up of Reliance Canada, under the provisions of the *Winding-up and Restructuring Act*, and appointed KPMG Inc. as liquidator (the "Liquidator").

The Liquidator of Reliance Canada hereby gives notice that the Court has fixed December 17, 2010 as the last day for policyholders, insureds or claimants with Policy Loss claims to submit to the Liquidator their claims for loss under or arising out of a Reliance Canada policy. If you have any claims for loss under or arising out of a policy of Reliance Canada (including any existing, new, future, contingent, known or unknown, reported or unreported, liquidated or unliquidated claims), you must complete a Proof of Claim for Policy Loss Claim ("POC") and submit it to the Liquidator in accordance with the procedure set by the Court by Order made August 3, 2010.

Please note that neither this Notice nor an Acknowledgment of Filing means or implies that any claim filed is payable as a claim under a policy or in the winding-up of Reliance Canada, or that it bears any particular priority if it is payable.

For further information or for a POC package, please contact KPMG Inc. as set out below, or visit www.relianceinsurance.ca.

This Notice is being given pursuant to the Order of the Court made August 3, 2010.

KPMG Inc. Liquidator,
Reliance Insurance Company – Canadian Branch, in Liquidation

ADDRESS FOR SERVICE

Bay Adelaide Centre
333 Bay Street
Suite 4600
Toronto, ON M5H 2S5

General Inquiry Line: (416) 777-8333

Email Inquiry: reliance@kpmg.ca

**EN L'AFFAIRE DE LA LIQUIDATION DU SECTEUR CANADIEN DES ASSURANCES DE RELIANCE
INSURANCE COMPANY – FILIALE CANADIENNE (« Reliance Canada »)**

**AVIS IMPORTANT À L'INTENTION DES TITULAIRES DE POLICE, DES ASSURÉS ET DES DEMANDEURS
AYANT PRÉSENTÉ DES RÉCLAMATIONS D'ASSURANCE**

Le 3 décembre 2001, la Cour supérieure de justice de l'Ontario (la « Cour ») a ordonné la liquidation de Reliance Canada, en vertu des dispositions de la *Loi sur les liquidations et les restructurations*, et a nommé KPMG Inc. à titre de liquidateur (le « liquidateur »).

Le liquidateur de Reliance Canada informe par la présente les titulaires de police, les assurés et les demandeurs ayant présenté des réclamations d'assurance que la Cour a fixé au 17 décembre 2010 la date limite à laquelle ils devront soumettre au liquidateur leurs demandes d'indemnisation relatives à la police de Reliance Canada. Si vous avez de telles demandes d'indemnisation (y compris toute demande existante, nouvelle, à venir ou éventuelle, connue ou inconnue, signalée ou non signalée, d'une somme déterminée ou indéterminée), vous devez remplir une preuve de réclamation pour réclamation d'assurance et la soumettre au liquidateur selon la procédure établie par ordre de la Cour le 3 août 2010.

Veuillez prendre note que ni le présent avis ni l'accusé de réception ne signifient que la demande déposée soit payable en tant que réclamation d'assurance ou dans le cadre de la liquidation de Reliance Canada ni, si elle est payable, qu'elle fasse l'objet d'une priorité particulière.

Pour obtenir de plus amples renseignements ou pour obtenir les documents relatifs à la preuve de réclamation, veuillez communiquer avec KPMG Inc., à l'aide des coordonnées fournies ci-dessous, ou visiter le site www.relianceinsurance.ca.

Le présent avis est publié par suite d'une ordonnance rendue par la Cour le 3 août 2010.

KPMG Inc.
Liquidateur
Reliance Insurance Company – filiale canadienne, en liquidation

ADRESSE DE SERVICE

Bay Adelaide Centre
333, rue Bay, bureau 4600
Toronto (Ontario) M5H 2S5

Renseignements généraux : 416-777-8333

Courriel : reliance@kpmg.ca

Sept 24

CORPORATIONS ACT

NOTICE

Corporations Act - Section 393
Local Incorporations
For the Month of: July 2010

Date	Number	Company Name
2010-07-01	62833	J. DEERING HOME CARE INC.
2010-07-02	62844	NAC CONTRACTING LTD.
2010-07-02	62835	62835 NEWFOUNDLAND &

2010-07-05	62851
2010-07-05	62855
2010-07-05	62852
2010-07-05	62853
2010-07-05	62841
2010-07-05	62847
2010-07-05	62848
2010-07-05	62849
2010-07-05	62850
2010-07-06	62860

LABRADOR LIMITED
G & G FISHERIES LTD.
G & L CHAFFEY TRUCKING
LTD.
GLP ENTERPRISES INC.
THE MORTGAGE STOP INC.
CAS Convenience Limited
Islands Villa Incorporated
Elegant Touch Hair &
Aesthetics Boutique Inc.
Paragon Projects Ltd.
CENTRAL NL TIRE
RECYCLES LTD.
TENACITY HOLDINGS INC.

THE NEWFOUNDLAND AND LABRADOR GAZETTE
September 24, 2010

2010-07-06	62863	THINK ABOUT IT PRODUCTIONS INC.	2010-07-16	62910	EASTERN EDVENTURES INC.
2010-07-06	62862	WOODLAND MEDICAL AESTHETICS INC.	2010-07-19	62934	BACCALIEU HOSPITALITY GROUP INC.
2010-07-06	62854	NF Safety Tech Ltd	2010-07-19	62941	BAY ST. GEORGE WASTE MANAGEMENT COMMITTEE INC
2010-07-07	62869	62869 NEWFOUNDLAND & LABRADOR INC.			EVERLAST PROFESSIONAL PROPERTIES INC.
2010-07-07	62870	J.P. CONSULTING LTD.	2010-07-19	62936	PARADISE PAVING LTD.
2010-07-07	62873	SPARK INTERACTIVE INC.	2010-07-19	62940	PROLAND PLUS INC
2010-07-07	62871	THE BAYMAN'S FLEAMARKET LTD.	2010-07-19	62933	SAM YO HOLDINGS LTD
2010-07-07	62864	Stephenville Lioness Club Inc.	2010-07-19	62927	Prime Property Development Inc
2010-07-07	62865	62865 NEWFOUNDLAND & LABRADOR INC.	2010-07-19	62928	Rumley BAS Ltd.
2010-07-07	62866	Patches Pet Supply Inc.	2010-07-19	62930	AIRLOCK TRUCKING INC
2010-07-07	62867	G.C.Callan Electrical LTD	2010-07-19	62931	Morag Loves Tapestry Inc.
2010-07-07	62868	709 Derby Girls Incorporated	2010-07-19	62932	Stockley Enterprises Inc.
2010-07-08	62878	62878 NEWFOUNDLAND AND LABRADOR LIMITED	2010-07-19	62932	GIRAFFE NORTH LIMITED
2010-07-08	62875	CHINCHED BISTRO LIMITED	2010-07-20	62943	THE HODDER GROUP INC.
2010-07-08	62877	DNG DEVELOPERS LIMITED	2010-07-20	62944	BANA PROPERTIES INC.
2010-07-08	62877	DNG DEVELOPERS LIMITED	2010-07-21	62950	DOWNEY REINFORCING INC.
2010-07-08	62880	KARMACK CONSTRUCTION LIMITED	2010-07-21	62947	EXPERT ELECTRICAL LTD.
2010-07-08	62881	OBIE ENTERPRISES INC.	2010-07-21	62948	FROST HEAVE SOLUTIONS LTD
2010-07-09	62888	62888 NEWFOUNDLAND & LABRADOR LTD.	2010-07-21	62949	Indigo Research Services Inc.
2010-07-09	62887	CALHAN INVESTMENTS INC.	2010-07-22	62946	GISBORNE LAKE DUNN'S MOUNTAIN TRAIL INC
2010-07-09	62876	GRAHAM TAYLOR TIRE REPAIR LTD	2010-07-22	62960	MATCHIM & ASSOCIATES INSURANCE INC.
2010-07-09	62884	Gander Decor Limited	2010-07-22	62962	MJ3 HOLDINGS INC.
2010-07-13	62893	DR. MOHAMMAD BARBOUTI PROFESSIONAL MEDICAL CORPORATION	2010-07-22	62966	MRC PROPERTY MAINTENANCE LTD
2010-07-13	62892	DR. TAHIR PASHA PROFESSIONAL MEDICAL CORPORATION	2010-07-22	62961	REGIONAL ACTION COMMITTEE ON HOUSING (REACH) INC.
2010-07-13	62896	GROS MORNE TRADING POST LTD.	2010-07-22	62958	TECHNICAL SOLUTION CONSULTANTS INC.
2010-07-13	62900	J I S B HOLDINGS LTD.	2010-07-22	62957	TRVC HOLDINGS INC.
2010-07-13	62894	MMG CONVENIENCE LIMITED	2010-07-22	62955	Darrell Pittman Consulting Inc.
2010-07-13	62885	Gathering Place Bell Island Inc.	2010-07-22	62956	Real Renos Plus Inc.
2010-07-14	62908	C M G TRUCKING INC.	2010-07-23	62968	B & A OFFLOADING – CATERING SERVICES (2010) LTD.
2010-07-14	62907	RMT HOLDINGS INC.	2010-07-23	62970	B & V ENTERPRISES INC.
2010-07-14	62904	SOU'WEST ARM RECREATION COMMITTEE INC.	2010-07-23	62969	ROOT'S CONSTRUCTION INCORPORATED
2010-07-14	62891	Humber Valley Sod Farm Ltd.	2010-07-23	62959	62959 NEWFOUNDLAND & LABRADOR LIMITED
2010-07-14	62902	62902 NEWFOUNDLAND & LABRADOR LIMITED	2010-07-23	62967	Jagged Edge Salon Ltd.
2010-07-15	62917	62917 NEWFOUNDLAND AND LABRADOR INC.	2010-07-26	62978	62978 NEWFOUNDLAND & LABRADOR INC.
2010-07-15	62914	B & L LANDSCAPING INC.	2010-07-26	62984	DAVE'S PHARMACY LTD.
2010-07-15	62913	CEILINGS PLUS INC.	2010-07-26	62977	LA SCIE AMBULANCE SERVICE INC.
2010-07-15	62916	F & G TRUCKING INC.	2010-07-26	62971	1st Stop On North Shore Inc
2010-07-15	62911	THE BOOBIE TRAP ENTERPRISES INC.	2010-07-26	62972	Pet ER Inc.
2010-07-15	62912	TRUE GLORY PRODUCTIONS INC	2010-07-26	62973	Riverbend Investments Inc.
2010-07-15	62903	Pike's Arm Carpentry Ltd.	2010-07-26	62974	Weathertight Roofing Ltd.
2010-07-16	62926	ATHENA HEALTH CENTRE INC.	2010-07-27	62975	Best Boy Media Inc.
2010-07-16	62923	DR. PAUL O'BRIEN PROFESSIONAL DENTAL CORPORATION	2010-07-27	62992	62992 NEWFOUNDLAND & LABRADOR INC
2010-07-16	62924	TRIPEN MAJOR-MIDGET HOCKEY INC.	2010-07-27	62993	BENCO CONTRACTING LTD.
			2010-07-27	62994	J. A. C. SALES AGENCY LTD
			2010-07-27	62990	PROVINCIAL FITNESS INC.
			2010-07-27	62991	S.K. PAINTING INC.

THE NEWFOUNDLAND AND LABRADOR GAZETTE
September 24, 2010

2010-07-27	62976	Sanamatsiatuk Safety and Industrial Supplies Limited	Date	Number	Company Name
2010-07-27	62983	Fine Cut Carpentry Limited	2010-07-09	62886	DIDHAM'S
2010-07-27	62985	Coppercreek Eavestrough & General Contracting Ltd.	2010-07-14	62909	ELECTRICAL LTD.
2010-07-27	62986	P&E MOBILE			CARRIAGE HOUSE
		ADVERTISING INC			MECHANICAL LIMITED
2010-07-28	63001	1 CHURCH HILL	Total Continuances: 2		
2010-07-28	63000	DEVELOPMENTS LIMITED	<i>Corporations Act</i> - Section 286		
		RIVER SIDE OASIS	Local Amendments		
		(2010) LTD	For the Month of: July 2010		
2010-07-28	62987	Vindland FEA Limited	Date	Number	Company Name
2010-07-28	62988	Complete Drywall Systems Limited	2010-07-02	62260	APM Group Inc.
2010-07-28	62989	Gambin's Grocery Ltd.	2010-07-05	21961	Nord Marine Services Ltd.
2010-07-28	62996	B. G. P. ENTERPRISES LTD.	2010-07-05	51191	THE HAIR FORCE SALON & SPA INC
2010-07-28	62997	THE PANTRY & BOARDWALK CAFE INC	2010-07-06	57411	CAINES CONSTRUCTION
2010-07-28	62998	Rockview Enterprise Ltd.			SURVEYS LIMITED
2010-07-28	62999	Saunders Mechanical Ltd.	2010-07-06	51868	ENERGY MANAGEMENT
2010-07-29	63009	1234 HOLDINGS LTD.			SERVICES LTD.
2010-07-29	63008	C & T BUILDING & RENOVATORS INC	2010-07-06	57529	MAHER'S CONTRACTING LTD
2010-07-29	63007	DR. PHILIP J. MORRIS PROFESSIONAL MEDICAL CORPORATION	2010-07-07	62681	ONWARD FISHING COMPANY NL LIMITED
		HARDMAN CLARKE	2010-07-08	50972	JWR CONSULTING LTD.
2010-07-29	63005	DEVELOPMENTS LIMITED	2010-07-08	51696	JWR CONTRACTING LTD.
2010-07-29	63006	JAC MEDIA INC.	2010-07-08	62665	KATIE'S GAS STOP INC.
2010-07-29	63013	PUDDLE POND RESOURCES INC.	2010-07-08	62787	KILLICK TECHNOLOGY INC.
2010-07-29	63010	SMITHIES ENTERPRISES INC.	2010-07-09	46894	Presidential Estates Inc.
		Camelot Properties Ltd.	2010-07-09	17205	W. J. HICKEY RETAIL SERVICES LIMITED
2010-07-29	63002	Nunatsiavut Mechanical and HVAC Ltd.	2010-07-13	21541	CO-OPERATED SUPPORT SYSTEM INC.
2010-07-30	63017	BDP CONTRACTING SERVICES INC	2010-07-13	55579	M & E RENTALS LTD.
2010-07-30	63019	BRB CONTRACTING LTD	2010-07-13	59408	MCM CONSULTING INC.
2010-07-30	63020	DR. GREGORY O. ELLIOTT PROFESSIONAL DENTAL CORP.	2010-07-13	59559	MFMI Industries Limited
		MONARCH MANAGEMENT SERVICES LTD	2010-07-13	54384	PROVINCIAL VENTURES INC.
2010-07-30	63014	Entiér Newfoundland Limited	2010-07-14	24493	CAJEAN ENTERPRISES LIMITED
2010-07-30	63015	Numbered Holding Company Limited	2010-07-14	26857	CODROY VALLEY FOLK FESTIVAL INC.
2010-07-30	63016	FDA Properties Limited	2010-07-14	55597	KGP CONSULTING INC.
			2010-07-14	13930	M. D. & K. AGENCIES LIMITED
			2010-07-14	27909	RESOURCE VENTURES LTD
			2010-07-14	35013	VALE NEWFOUNDLAND & LABRADOR LIMITED
Total Incorporations: 130			2010-07-15	59888	ATLANTIC FUTURE FISHERIES LTD.
<i>Corporations Act</i> - Section 331			2010-07-15	58327	CAPSC SAFETY SERVICES
Local Revivals					NEWFOUNDLAND LABRADOR INC.
For the Month of: July 2010			2010-07-15	6073	Newfoundland & Labrador Safety Council Inc.
Date	Number	Company Name	2010-07-15	59834	SOUTH BROOK POINT LTD.
2010-07-07	15948	HALLIDAY HOLDINGS LIMITED	2010-07-15	52848	KAT EXPLORATION INC.
2010-07-08	39323	Calvert Community Center, Inc.	2010-07-16	60034	ARGENTIA METAL WORKS LIMITED
2010-07-23	19212	CENTRAL FOREST PRODUCTS LIMITED	2010-07-20	51554	DENNIS BLANCHARD CONSTRUCTION AND RENOVATION LTD.
2010-07-29	30172	Bill Hodder Co. Ltd.	2010-07-21	61600	CHAMBERLAINS PARK ACTION COMMITTEE INC.
2010-07-29	41919	Omega Contracting Incorporated			INNU MIKUN INC.
			2010-07-22	43652	MICHIKAMAU OUTFITTING LIMITED
Total Revivals: 5			2010-07-23	31840	
<i>Corporations Act</i> - Section 296 and 393					
Local Continuances					
For the Month of: July 2010					

THE NEWFOUNDLAND AND LABRADOR GAZETTE
September 24, 2010

2010-07-23	50309	R & E TRANSPORTATION LTD.	<i>Corporations Act - Section 299</i>		
2010-07-23	8666	Watkins Enterprises Limited	Local Discontinuances		
2010-07-23	16055	WATKINS HOLDINGS LIMITED	For the Month of: July 2010		
2010-07-23	6330	Williams Mobile Homes Limited	Date	Number	Company Name
			2010-07-20	47531	Atlantic Realty Holdings Ltd.
2010-07-29	20902	10002 NEWFOUNDLAND LIMITED	2010-07-22	14109	Lemmy Holdings Limited
2010-07-29	62892	DR. TAHIR PASHA PROFESSIONAL MEDICAL CORPORATION	Total Discontinuances: 2		
2010-07-29	11931	G.J. Cahill & Company (1979) Limited	<i>Corporations Act - Section 294</i>		
2010-07-29	60281	SOUTH WEST HOLDINGS LTD.	Local Amalgamations		
2010-07-30	42295	ASK PROSPECTING & GUIDING INC.	For the Month of: July 2010		
2010-07-30	60352	GRC EXCAVATING SERVICES INC	Date	Number	Company Name
2010-07-30	4701	Industrial Commercial Maintenance Limited	2010-07-01	62834	DAVON HOLDINGS INCORPORATED
2010-07-30	62572	LEOPARD CANADA LTD.	From:	58140	DARROD HOLDINGS INC.
				11574	DAVON HOLDINGS INCORPORATED
Total Amendments: 46			2010-07-01	62840	JAMES G. CRAWFORD LIMITED
			From:	62741	62741 NEWFOUNDLAND AND LABRADOR LIMITED
				1944	JAMES G. CRAWFORD LIMITED
				1945	JAMES G. CRAWFORD LIMITED
<i>Corporations Act - Section 335</i>					
Local Dissolutions					
For the Month of: July 2010					
Date	Number	Company Name	2010-07-01	62836	NBR CONSULTING LTD.
2010-07-02	59014	MERCURY SALES AND MARKETING INC.	From:	35224	Banco Holding Ltd.
2010-07-02	43392	Millview Transport Ltd.		35225	NBR Consulting Ltd.
2010-07-05	36058	T. BANKS & SONS LTD.	2010-07-01	62838	NORTHSIDE MARINE LTD.
2010-07-07	49824	GRACIOUS LIVING HOME CARE INC.	From:	62649	62649 NEWFOUNDLAND AND LABRADOR LIMITED
2010-07-08	50275	50275 NEWFOUNDLAND & LABRADOR LIMITED		34243	GLOVERTOWN MARINE LIMITED
2010-07-08	58666	A & K CHIP VAN LTD.		20608	Glovertown Shipyards Limited
2010-07-13	5417	KAVANAGH ELECTRIC LIMITED		47375	Northside Marine Ltd.
2010-07-13	42558	Phillips Head Wharf Committe Ltd.	2010-07-01	62839	SANCO FINANCIAL LIMITED
2010-07-14	20615	E & E Enterprises Limited	From:	62742	62742 NEWFOUNDLAND AND LABRADOR LIMITED
2010-07-19	49588	"Your" Small Business Expert Inc.		27610	Sanco Financial Limited
2010-07-19	61492	AAA PLATINUM CONTRACTING INC.	2010-07-08	62879	GRI SIMULATIONS INC.
2010-07-20	55414	GSGV ENTERPRISES LTD.	From:	59596	59596 NEWFOUNDLAND & LABRADOR INC.
2010-07-20	53089	HAMILTON CONVENIENCE LTD.		59597	59597 NEWFOUNDLAND & LABRADOR INC.
2010-07-21	29468	CREATIVE RENTAL PROPERTIES LTD.		47885	GRI Simulations Inc.
2010-07-21	27505	V C R DOCTOR LIMITED	2010-07-15	62919	NEWFOUND RESOURCES LIMITED
2010-07-22	51822	51822 NEWFOUNDLAND AND LABRADOR INC.	From:	19935	Newfound Resources Limited
2010-07-23	58515	VALUE INTEGRITY PRODUCTS LIMITED		62715	NRL Holding Limited
2010-07-26	58358	GCW ENTERPRISES LIMITED	2010-07-31	63021	A. & R. TRUCKING LIMITED
2010-07-27	60617	SAFE HOME SOLUTIONS INC.	From:	14085	A. & R. TRUCKING LIMITED
2010-07-30	56255	BAS Holdings Inc.		43681	Anthony Warren Holdings Limited
2010-07-30	43256	Planters Paradise Inc.	Total Amalgamations: 8		
2010-07-30	34805	TERRACE LIMITED			
Total Dissolutions: 22					

THE NEWFOUNDLAND AND LABRADOR GAZETTE
September 24, 2010

<i>Corporations Act - Section 286</i>			2010-07-07	62874	RIGHT MANAGEMENT
Local Name Changes					CANADA, INC.
For the Month of: July 2010			2010-07-08	62882	4542410 CANADA INC.
			2010-07-08	62883	GHD, INC.
Number		Company Name	2010-07-09	62890	THE ROYAL BANK OF
57411		CAINES CONSTRUCTION			SCOTLAND N.V.,
		SURVEYS LIMITED			(CANADA) BRANCH
2010-07-06	From:	CAINES SURVEYS	2010-07-13	62901	ATLANTICA DIVERSIFIED
		LIMITED			TRANSPORTATION
					SYSTEMS INC.
57529		MAHER'S CONTRACTING	2010-07-13	62899	CMP 2010 II CORPORATION
		LTD	2010-07-13	62897	MEGGITT TRAINING
2010-07-06	From:	PLACENTIA BAY			SYSTEMS (QUÉBEC) INC.
		LOGISTICS LIMITED			SYSTÈMES
					D'ENTRAÎNEMENT
62681		ONWARD FISHING			MEGGITT (QUÉBEC) INC.
		COMPANY NL LIMITED	2010-07-13	62895	QBE SERVICES INC.
2010-07-07	From:	62681 NEWFOUNDLAND	2010-07-13	62898	R.J. O'BRIEN &
		AND LABRADOR INC.			ASSOCIATES CANADA INC.
			2010-07-14	62906	LEAGUE INVESTMENT
62665		KATIE'S GAS STOP INC.			SERVICES INC.
2010-07-08	From:	62665 NEWFOUNDLAND &	2010-07-14	62905	R&R TECHNOLOGY
		LABRADOR INC.			SOLUTIONS CANADA INC.
					R&R SOLUTIONS
62787		KILLICK TECHNOLOGY			TECHNOLOGIQUES
		INC.			CANADA INC.
2010-07-08	From:	KILLICK TECHNOLOGIES	2010-07-15	62920	IFS VEHICLE
		INC.			DISTRIBUTORS ULC
			2010-07-16	62929	4REFUEL GP
35013		VALE NEWFOUNDLAND			CORPORATION
		& LABRADOR LIMITED	2010-07-16	62925	AEGON FUND
2010-07-14	From:	VALE INCO			MANAGEMENT INC.
		NEWFOUNDLAND &			AEGON GESTION DE
		LABRADOR LIMITED			FONDS INC.
59888		ATLANTIC FUTURE	2010-07-19	62935	COLUMN TECHNOLOGIES
		FISHERIES LTD.			CANADA INC.
2010-07-15	From:	Gateway Motors Inc.	2010-07-19	62937	DYNO NOBEL
					TRANSPORTATION
59834		SOUTH BROOK POINT			CANADA INC.
		LTD.	2010-07-19	62939	HALLIBURTON PARTNERS
2010-07-15	From:	K & W INVESTMENTS			CANADA INC.
		LTD.	2010-07-20	62945	TEN STAR LIFE
					INSURANCE BROKERS INC.
62892		DR. TAHIR PASHA	2010-07-21	62953	LOMBARD CANADA LTD.
		PROFESSIONAL MEDICAL			LOMBARD DU CANADA
		CORPORATION			LTÉE
2010-07-29	From:	DR. YAHIR PASHA	2010-07-22	62964	MANGA HOTELS (ST
		PROFESSIONAL MEDICAL			JOHNS) INC.
		CORPORATION	2010-07-22	62965	MANGA INC.
			2010-07-26	62979	3223845 NOVA SCOTIA
Total Name Changes: 9					LIMITED
<i>Corporations Act - Section 443</i>			2010-07-26	62981	CALIX CANADA, INC.
Extra-Provincial Registrations			2010-07-26	62982	EXPLORATION MIDLAND
For the Month of: July 2010					INC. MIDLAND
			2010-07-26	62980	EXPLORATION INC.
					SORA GROUP WEALTH
Date	Number	Company Name			ADVISORS INC.
2010-07-02	62843	1512513 ALBERTA LTD.	2010-07-27	62995	COMITE REGIONAL DU
2010-07-02	62846	GRANITE GUARD, LLC			TOURISME
2010-07-02	62842	MINOR MAINTENANCE	2010-07-28	63003	SENIAC HOLDINGS INC.
		LTD.	2010-07-29	63012	ARMTEC
2010-07-02	62845	PATHWAY OIL & GAS 2010			INFRASTRUCTURE
		INC.			INC./INFRASTRUCTURES
2010-07-05	62856	LEXINSURE INC.			ARMTEC INC.
		LEXASSURE INC.	2010-07-29	63011	NOMURA CANADA INC.
2010-07-06	62859	LYONESS CANADA INC.	2010-07-30	63022	FUNDY SPRAY II
2010-07-07	62872	BROWN-BARNETT			FISHERIES LIMITED
		INSURANCE BROKERS			
		LTD.	Total Registrations: 37		

THE NEWFOUNDLAND AND LABRADOR GAZETTE
September 24, 2010

<i>Corporations Act - Section 451</i>			2010-07-15	62921	AGILITY LOGISTICS, CO.
Extra-Provincial Name Changes			From:	58765	AGILITY LOGISTICS, CO.
For the Month of: July 2010					
Number		Company Name	2010-07-15	62922	ALSTOM SITCA INC.
56858		MAX 3 HOLDINGS INC.	From:	60645	SITCA INC.
2010-07-27	From:	DALLAS MERCER	2010-07-15	62918	BHP BILLITON CANADA
		CONSULTING INC./			INC.
		CONSULTATION DALLAS	From:	60040	BHP BILLITON CANADA
		MERCER INC.			INC.
Total Name Changes: 1			2010-07-15	62915	SPECTRA PREMIUM
					INDUSTRIES INC.
<i>Corporations Act - Section 294</i>					LES INDUSTRIES SPECTRA
Extra-Provincial Registrations for Amalgamation			From:	3676D	PREMIUM INC.
For the Month of: July 2010					Spectra/Premium Industries Inc.
Date	Number	Company Name			Les Industries Spectra/Premium
2010-07-05	62858	CARDINAL HEALTH			Inc.
		CANADA INC.	2010-07-19	62942	SIEMENS CANADA
From:	2824D	Cardinal Health Canada 204,			LIMITED
		Inc.Cardinal Sante Canada 204,			SIEMENS CANADA
		Inc.	From:	5208F	LIMITÉE
	3017D	SOURCE MEDICAL		61214	7587724 CANADA LTD.
		CORPORATION SOURCE			SIEMENS CANADA
		MEDICALE CORPORATION			LIMITED
2010-07-05	62857	SMITH INTERNATIONAL			SIEMENS CANADA
		CANADA, LTD.			LIMITÉE
From:	5843F	SMITH INTERNATIONAL	2010-07-21	62952	D.G. BEVAN INSURANCE
		CANADA, LTD.			BROKERS LTD.
2010-07-06	62861	VIRTEK VISION	From:	57105	D.G. BEVAN INSURANCE
		INTERNATIONAL INC.			BROKERS LTD.
From:	51355	GERBER SCIENTIFIC	2010-07-21	62951	GESCO INDUSTRIES INC.
		INTERNATIONAL LTD. /	From:	55372	GESCO INDUSTRIES INC.
		GERBER SCIENTIFIQUE			
		INTERNATIONALE LTEE	2010-07-21	62954	LIFTOW LIMITED
2010-07-09	62889	ALSTOM POWER &	From:	4284F	LIFTOW LIMITED
		TRANSPORT CANADA INC.			
		ALSTOM ÉNERGIE &	Total Registrations for Amalgamation: 12		
		TRANSPORT CANADA INC.			
From:	60253	ALSTOM HYDRO CANADA			DEPARTMENT OF GOVERNMENT SERVICES
		INC.			Dean Doyle, Registrar (Acting)

Sept 24

**EMBALMERS AND FUNERAL
DIRECTORS ACT, 2008**

NOTICE

The following is a list of names and addresses of Funeral Directors 2010 to whom licences and permits have been issued under the *Embalmers and Funeral Directors Act*, cE-7.1, SNL2008 as amended.

Name	Street 1	City	Province	Postal Code
Anderson, Lisa D.	2 Southwell Place	Carbonear	NL	A1Y 1A6
Anderson, Michelle	7 Blue Bell Bend	St. Philip's	NL	A1M 2G5
Andrews, Darrin W.	89 Brown Avenue	Gr Falls--Windsor	NL	A2A 2L2
Augot, John	P. O. Box 51	Morrisville	NL	A0H 1W0
Barrett, Robert R.	328 Hamilton Avenue	St. John's	NL	A1E 1J9
Barry, Ann Marie	P. O. Box 267	Placentia	NL	A0B 2Y0
Broughton, Kenneth	P. O. Box 14	Brigus	NL	A0A 1K0
Brown, Holly	1 Farm Road	Hawke's Bay	NL	A0K 3B0
Bulgin, Andrea	P. O. Box 552	Twillingate	NL	A0G 4M0
Carnell, Geoffrey	6 Pringle Place	St. John's	NL	A1B 1A3
Chaulk, David		Clarenville	NL	A5A 2B1
Colbourne, Coreen	P. O. Box 788	Lewisporte	NL	A0G 3A0
Coombs, Andrew	P. O. Box 267	Placentia	NL	A0B 2Y0
Coombs, Jeanette	P. O. Box 267	Placentia	NL	A0B 2Y0
Cumben, Thomas R.	P. O. Box 717	Grand Bank	NL	A0E 1W0
Cunning, Roland	14 Concord Avenue	Corner Brook	NL	A2H 5C8
Fahey, Esther	General Delivery	Fermeuse	NL	A0A 2G0
Fahey, Gerald K.	General Delivery	Fermeuse	NL	A0A 2G0
Farr, Harley K.	P. O. Box 95	Carter's Cove	NL	A0G 1P0
Farr, Kimberly D.	P. O. Box 53	Carter's Cove	NL	A0G 1P0
Fillatre, Laura	205 Curling Street	Corner Brook	NL	A2H 3J1
Fillatre, Levinia	P. O. Box 753	Corner Brook	NL	A2H 6Z1
Fillatre, Margaret	218 Curling Street	Corner Brook	NL	A2H 3J1
Gibbons, Donald	P. O. Box 424	St. Mary's	NL	A0B 3B0
Gibbons, George	P. O. Box 424	St. Mary's	NL	A0B 3B0
Gibbons, Jean M.	P. O. Box 424	St. Mary's	NL	A0B 3B0
Goodyear, Sheila	27 Greenwood Avenue	Gr. Falls--Windsor	NL	A2A 1S7
Green, Ruby S.	7 A Kennedy Place	Gr. Falls--Windsor	NL	A2B 0A2
Green, Todd	3 Richmond Street	Gr. Falls--Windsor	NL	A2B 1H4
Green, Trevor D.	7 Kennedy Place	Gr. Falls--Windsor	NL	A2B 0A2
Hansford, Christopher	P. O. Box 11	Hickman's Harbour	NL	A0C 1P0
Hansford, Kimberley	P. O. Box 11	Hickman's Harbour	NL	A0C 1P0
Hickey, Jamie N.	P. O. Box 309	Holyrood	NL	A0A 2R0
Hickey, Viola	P. O. Box 309	Holyrood	NL	A0A 2R0
Hiscock, Gordon	21 Legion Road	Clarenville	NL	A5A 1J7
Holloway, Ruby	P. O. Box 42	Whitbourne	NL	A0B 3K0
Hopkins, Carl	P. O. Box 71	Old Perlican	NL	A0A 3G0
Hopkins, William	P. O. Box 262	Old Perlican	NL	A0A 3G0
Hoskins, Debi	P. O. Box 189	Bishop's Falls	NL	A0H 1C0
Hulan, Amanda H.	5 Discovery Place	Carbonear	NL	A1Y 1A1
Jacobs, Suzanne	P. O. Box 878	Lewisporte	NL	A0G 3A0
Kean-Simms, Paula	15 Russell Street	Gander	NL	A1V 0A1
Kelly, Florence M.	126 Humber Road	Corner Brook	NL	A2H 1G3
Lewis, Richard	P. O. Box 419	Holyrood	NL	A0A 2R0
Lomond, Geoffrey	P. O. Box 1505	Marystown	NL	A0E 2M0
Maher, Gerard	P. O. Box 151	Freshwater	NL	A0B 1W0
Mercer, Wayne	28 Eltero Park	Bishop's Falls	NL	A0H 1C0
Moore, Clarence L. E.	P. O. Box 429	Clarke's Beach	NL	A0A 1W0
Moore, Lisa	29 Hill Avenue	Clarke's Beach	NL	A0A 1W0
Moore, Sheila	P. O. Box 429	Clarke's Beach	NL	A0A 1W0
Moore--Reid, Clarice	P. O. Box 429	Clarke's Beach	NL	A0A 1W0
Morgan, Chris	421 Little Bay Road	Springdale	NL	A0J 1T0

Mullaly, Patrick F.	P. O. Box 57	Northern Bay	NL	A0A 3B0
Newport, Ellison	P. O. Box 147	Seal Cove	NL	A0H 2G0
Noble, Harold J.	P. O. Box 220	Dover	NL	A0G 1X0
Noel, Gail	423 Little Bay Road	Springdale	NL	A0J 1T0
Noel, Jonathan	6 Circular Road	Springdale	NL	A0J 1T0
Oram, Dawson	23 Bayview Heights	Glovertown	NL	A0G 2L0
Oram, Elizabeth	23 Bayview Heights	Glovertown	NL	A0G 2L0
Oram, Karen P.	P. O. Box 184	Glovertown	NL	A0G 2L0
Oram, Paul	P. O. Box 184	Glovertown	NL	A0G 2L0
Parsons, Brenda D.	63 North Main Street	Deer Lake	NL	A8A 1X1
Peach, Milton L.	82 Water Street	Carbonear	NL	A1Y 1B1
Pendergast, John F.	P. O. Box 215	Wabana-Bell Island	NL	A0A 4H0
Pritchett, David	P. O. Box 796	Gambo	NL	A0G 1T0
Russell, Amanda	23 Payne's Drive	Stephenville Xing	NL	A0N 2C0
Russell, Kelly	P. O. Box 104	Stephenville	NL	A2N 2Y9
Russell, Sheila	P. O. Box 104	Stephenville	NL	A2N 2Y9
Short, Justin	P. O. Box 216	Port-Aux-Basques	NL	A0M 1C0
Slade, Elizabeth	P. O. Box 324	Carbonear	NL	A1Y 1B7
Slade, Krista	P. O. Box 324	Carbonear	NL	A1Y 1B7
Slade, Ross	P. O. Box 58	Western Bay	NL	A0A 4J0
Spencer, Mark D.	10 Sunset Blvd.	Corner Brook	NL	A2H 6A2
Squire, Eugene	P. O. Box 10	Eastport	NL	A0G 1Z0
Stockley, Catherine J.	P. O. Box 775	Gambo	NL	A0G 1T0
Thompson, Wesley	P. O. Box 968	Botwood	NL	A0H 1E0
Tucker, Twyla	P. O. Box 4	Bunyan's Cove	NL	A0C 1E0
Vanzuylen, Sherrie	6A Barnes Road, Unit 2	Shoal Harbour	NL	A5A 4C5
Vardy, Arthur R.	P. O. Box 69	Hickman's Harbour	NL	A0C 1P0
Vardy, Doris	P. O. Box 69	Hickman's Harbour	NL	A0C 1P0
Warren, G. Paul	P. O. Box 194	Dildo	NL	A0B 1P0
Warren, Gerald	P. O. Box 123	Dildo	NL	A0B 1P0
Warren, Wynn Anne	P. O. Box 194	Dildo	NL	A0B 1P0
Wimbleton--Butt, Lisa	P. O. Box 331	La Scie	NL	A0K 3M0
Wiseman, Tammy	P. O. Box 1534	Marystown	NL	A0E 2M0

Number of Customers listed: 85

Generated On: 09/13/2010

Sept 24

NOTICE

The following is a list of names and addresses of Embalmers and Funeral Directors 2010 to whom licences and permits have been issued under the *Embalmers and Funeral Directors Act*, cE-7-1, SNL2008 as amended.

Name	Street 1	City	Province	Postal Code
Abbott, Brent	P. O. Box 39	Wesleyville	NL	A0G 4R0
Anderson, John F.	10 Connolly's Lane	St. John's	NL	A1G 1M7
Anderson, John N.	39 Spratt Place	St. John's	NL	A1E 4M1
Anderson, Robert	5 Roehampton Place	Mount Pearl	NL	A1N 4M9
Avery, Edison F.	14 Fleming Road	Goulds	NL	A1S 1E7
Barrett, Colin	2 Callaghan Place	Paradise	NL	A1L 0C4
Barrett, R. David	41 Angels Road	Paradise	NL	A1L 2C5
Barrett, Susan	2 Callaghan Place	Paradise	NL	A1L 0C4
Belbin, Giselle	5 Morris Avenue	St. John's	NL	A1C 5E6
Blundon, Lorraine	P. O. Box 429	Burin Bay Arm	NL	A0E 1G0
Boyd, Rhonda	P. O. Box 486	Lewisporte	NL	A0G 3A0
Broughton, Wayne S.	P. O. Box 361	Brigus	NL	A0A 1K0
Burke, Amy	199 Mundy Pond Road	St. John's	NL	A1E 1V5
Carberry, Stephen	43 St. Andrew Avenue	Mount Pearl	NL	A1N 1E3
Chubbs, Darrell	25 Boland Street	Goulds	NL	A1E 0A1
Cole, Lewis	23 Hoyles Road	Carbonear	NL	A1Y 1A8
Coombs, Francis	P. O. Box 267	Placentia	NL	A0B 2Y0

Coombs, Thomas	P. O. Box 267	Placentia	NL	A0B 2Y0
Crann, Shawn	P. O. Box 1144, Stn. C	HV--Goose Bay	NL	A0P 1C0
Cunning, Baden	62 Petley Street	Corner Brook	NL	A2H 3H1
Doody, Lisa Marie	17 Sycamore Place	Mount Pearl	NL	A1N 1P4
Dowden, Peter	37 Albany Street	St. John's	NL	A1E 3C6
Dunphy, Barbara	P. O. Box 56	Holyrood	NL	A0A 2R0
Dunphy, Kenneth	P. O. Box 56	Holyrood	NL	A0A 2R0
Eddy, Roger W.	22 Imogene Crescent	Paradise	NL	A1L 1H4
Everard, Annette	4 Victoria Street	St. John's	NL	A1C 3V3
Fahey, Gerald P.	General Delivery	Fermeuse	NL	A0A 2G0
Fahey, Justin	General Delivery	Fermeuse	NL	A0A 2G0
Farr, Thomas S.	P. O. Box 53	Carter's Cove	NL	A0G 1P0
Fewer, Desmond	58 Boyle Street	St. John's	NL	A1E 2H6
Fewer, Krista	66 Cormack Drive	Clarenville	NL	A5A 1C6
Fewer, Robert	299 Memorial Drive	Clarenville	NL	A5A 1R6
Fillatre, A. Maxwell	9 Fern Street	Corner Brook	NL	A2H 3A8
Fillatre, Ernest	P. O. Box 329	Stphnville Crossing	NL	A0N 2C0
Fillatre, Keith W.	218 Curling Street	Corner Brook	NL	A2H 3J1
Fitzgerald, Matthew	45 St. Andrews Avenue	Mount Pearl	NL	A1N 1E3
Flaherty, Joseph	P. O. Box 265	Marysvale	NL	A0A 2Z0
Flood, Raymond F.	15 Vardy's Avenue	Clarenville	NL	A5A 2A5
Foster, Mark	P. O. Box 306	LaScie	NL	A0K 3M0
Gillingham, Gurrin A.	Site 5, P. O. Box 37	Appleton	NL	A0G 2K0
Goodyear, Kenneth	19 Boyles Crescent	Springdale	NL	A0J 1T0
Goodyear, Michael T.	27 Greenwood Avenue	Gr.Falls--Windsor	NL	A2A 1S7
Green, Andrew	P. O. Box 18	Hant's Harbour	NL	A0B 1Y0
Green, Donald	P. O. Box 18	Hant's Harbour	NL	A0B 1Y0
Green, Terry P.	57 Peddle Drive	Gr Falls-Windsor	NL	A2B 1K8
Green, Winston N.	7A Kennedy Place	Gr.Falls--Windsor	NL	A2B 0A2
Hanrahan, Christa	34 Walsh's Road	Little Bay	NL	A0E 2H0
Hickey, Andrew	P. O. Box 419	Holyrood	NL	A0A 2R0
Hickey, James	P. O. Box 419	Holyrood	NL	A0A 2R0
Hill, Nova Lee	P. O. Box 1	Little Burnt Bay	NL	A0G 3B0
Hodder, Jeffrey	P. O. Box 407	Creston South	NL	A0E 1K0
Holloway, Garry	P. O. Box 42	Whitbourne	NL	A0B 3K0
Holloway, Mindy	39A Hancock's Road	Deer Lake	NL	A8A 1M4
Hoskins, Paul L.	P. O. Box 189	Bishop's Falls	NL	A0H 1C0
Hulan, Carla	P. O. Box 602	Port Aux Basques	NL	A0M 1C0
Hulan, Jason	3 Discovery Place	Carbonear	NL	A1Y 1A1
Hussey, Willis	P. O. Box 367	Upper Island Cove	NL	A0A 4E0
Hynes, Sheldon	P. O. Box 265	St. Alban's	NL	A0H 2E0
Ivany, Maxine	29 Winterland Rd.	Burin Bay Arm	NL	A0E 1G0
Jacobs, Gary	P. O. Box 878	Lewisporte	NL	A0G 3A0
Keats, Garry	P. O. Box 13, RR 1	Joe Batt's Arm	NL	A0G 2X0
Kieley, Darren	P. O. Box 539	Gander	NL	A1V 2E1
Legge, Eric (Rick)	P. O. Box 940	Port-Aux-Basques	NL	A0M 1C0
Lewis, Carol Anne	P. O. Box 419	Holyrood	NL	A0A 2R0
Lewis, Marcia	P. O. Box 419	Holyrood	NL	A0A 2R0
Lomond, Harold	P. O. Box 539	Port Aux Basques	NL	A0M 1C0
Loveridge, Gerald	P. O. Box 189	Twillingate	NL	A0G 4M0
Loveridge, Julianne	P. O. Box 189	Twillingate	NL	A0G 4M0
Lynch, Wayne	P. O. Box 197	Spaniard's Bay	NL	A0A 3X0
Maher, Paul	P. O. Box 151	Freshwater	NL	A0B 1W0
Maidment, James	7 Chamberlain St.	Gr. Falls--Windsor	NL	A2A 2G5
Matthews, Cheryl	104 Grecian Place	Fort McMurray	AB	T9H 2N1
McCormick, Paula	22 Whiteford Place	St. John's	NL	A1B 2A4
Mooney, David	67 Ohio Drive	Stephenville	NL	A2N 2V3
Moore, Alice D.	20 Cherrington	St. John's	NL	A1E 4X6
Moore, Carl R.	P. O. Box 429	Clarke's Beach	NL	A0A 1W0
Moulard, Tracy	P. O. Box 114	Musgrave Harbour	NL	A0G 3J0
Mullaly, Linda	P. O. Box 57	Northern Bay	NL	A0A 3B0
Nippard, Lee	P. O. Box 763	St. Anthony	NL	A0K 4S0

THE NEWFOUNDLAND AND LABRADOR GAZETTE
September 24, 2010

Noble, Teena	P. O. Box 2137, Stn. B	HValley-Goose Bay	NL	A0P 1E0
Noel, Kenneth E.	2 LeMarchant Street	Carbonear	NL	A1Y 1A9
Parsons, David E.	63 North Main Street	Deer Lake	NL	A8A 1X1
Parsons, Debra	8 Jean D'Arc Place	Clareville	NL	A5A 1J4
Parsons, Dwayne S.	P. O. Box 3761, RR # 2	Corner Brook	NL	A2H 6B9
Pender, Jennifer	P. O. Box 270	New-Wes-Vally	NL	A0G 4R0
Penney, John F.	P. O. Box 385	Labrador City	NL	A2V 2K6
Pritchett, Kevin D.	P. O. Box 796	Gambo	NL	A0G 1T0
Quinton, Rodney	6 Juniper Crescent	Labrador City	NL	A2V 1X7
Roberts, Renetta	106 Sullivan Avenue	Gander	NL	A1V 1S2
Ruelokke, Beatrice	107 Legion Road	Conception Bay S.	NL	A1X 6Y3
Russell, Keith R.	P. O. Box 586	Stphvile Crossing	NL	A0N 2C0
Russell, Marsha Ann	4 Park Avenue	Stephenville	NL	A2N 1G1
Ryan, Joseph	P. O. Box 306	Bay Bulls	NL	A0A 1C0
Skiffington, Pamela	11 Maple Avenue	Clareville	NL	A5A 1L1
Slade, Edward	P. O. Box 324	Carbonear	NL	A1Y 1B7
Spencer, Creston	P. O. Box 248	Harbour Breton	NL	A0H 1P0
Stacey, Peter	P. O. Box 18, Site 5	Appleton	NL	A0G 2K0
Stack, Wanda	40 Cedar Brae Cres	St. John's	NL	A1B 4R1
Strathie, Cluny H.	P. O. Box 305	Bonavista	NL	A0C 1B0
Strathie, Robert R.	P. O. Box 305	Bonavista	NL	A0C 1B0
Sturge, Adam W.	45 Gosse's Road	Paradise	NL	A1L 1T4
Tizzard, Shawn	23 Main Street	Springdale	NL	A0J 1T0
Trenchard , Barry	P. O. Box 429	Clarke's Beach	NL	A0A 1W0
Wade, Daryl R.	P. O. Box 228	Gambo	NL	A0G 1T0
Warren, Bruce	P. O. Box 434	Grand Bank	NL	A0E 1W0
Warren, Craig C.	P. O. Box 277	Dildo	NL	A0B 1P0
Warren, Shirley G.	P. O. Box 123	Dildo	NL	A0B 1P0
Weeks, William J.	P. O. Box 730	Springdale	NL	A0J 1T0
Wells, Clifford	P. O. Box 2027	Northern Arm	NL	A0H 1E0
White, Connie E.	P. O. Box 539	Gander	NL	A1V 2E1
Wimbleton, Eddie	P. O. Box 582	Baie Verte	NL	A0K 1B0
Wiseman, Terry	P. O. Box 1534	Marystown	NL	A0E 2M0
Woolfrey, Gordon J. G.	P. O. Box 1528	Lewisporte	NL	A0G 3A0
Woolfrey, Gordon R.	P. O. Box 121	Lewisporte	NL	A0G 3A0
Woolfrey, Robert	P. O. Box 100	Lewisporte	NL	A0G 3A0

Number of Customers listed: 115

Generated On: 09/13/2010

Sept 24

NOTICE

The following is a list of names and addresses of Funeral Homes 2010 to whom licences and permits have been issued under the *Embalmers and Funeral Directors Act*, cE-7.1, SNL2008 as amended.

Name	Street 1	City	Province	Postal Code
Barrett's Funeral Home Mt. Pearl	328 Hamilton Avenue	St. John's	NL	A1E 1J9
Barrett's Funeral Home St. John's	328 Hamilton Avenue	St. John's	NL	A1E 1J9
Blundon's Funeral Home-Clareville	8 Harbour Drive	Clareville	NL	A5A 4H6
Botwood Funeral Home	147 Commonwealth Drive	Botwood	NL	A0H 1E0
Broughton's Funeral Home	P. O. Box 14	Brigus	NL	A0A 1K0
Carnell's Funeral Home Ltd.	P. O. Box 8567	St. John's	NL	A1B 3P2
Caul's Funeral Home St. John's	P. O. Box 2117	St. John's	NL	A1C 5R6
Caul's Funeral Home Torbay	P. O. Box 2117	St. John's	NL	A1C 5R6
Central Funeral Home--B. Falls	45 Union Street	Gr. Falls--Windsor	NL	A2A 2C9
Central Funeral Home--GF/Windsor	45 Union Street	Gr. Falls--Windsor	NL	A2A 2C9
Central Funeral Home--Springdale	45 Union Street	Gr. Falls--Windsor	NL	A2A 2C9
Conway's Funeral Home	P. O. Box 309	Holyrood	NL	A0A 2R0
Coomb's Funeral Home	P. O. Box 267	Placentia	NL	A0B 2Y0
Country Haven Funeral Home	167 Country Road	Corner Brook	NL	A2H 4M5

Don Gibbons Ltd. Funeral Home	P. O. Box 424	St. Mary's	NL	A0B 3B0
Dunphy's Funeral Home	P. O. Box 56	Holyrood	NL	A0A 2R0
East Haven Funeral Home Inc.	P. O. Box 940	Port Aux Basques	NL	A0M 1C0
Fahey's Funeral Home--Fermeuse	General Delivery	Fermeuse	NL	A0A 2G1
Fahey's Funeral Home--Trepassey	General Delivery	Fermeuse	NL	A0A 2G1
Fewer's Funeral Home--Arnolds Cove	299 Memorial Drive	Clarenville	NL	A5A 1R6
Fewer's Funeral Home--Clarenville	299 Memorial Drive	Clarenville	NL	A5A 1R6
Fewer's Funeral Home--L. H. Ease	299 Memorial Drive	Clarenville	NL	A5A 1R6
Fewer's Funeral Home--Lethbridge	299 Memorial Drive	Clarenville	NL	A5A 1R6
Fewer's Funeral Home--Port Rexton	299 Memorial Drive	Clarenville	NL	A5A 1R6
Fillatre's Funeral Home, Corner Br	218 Curling Street	Corner Brook	NL	A2H 3J4
Fillatre's Funeral Home, Deer Lake	218 Curling Street	Corner Brook,	NL	A2H 3J4
Fillatre's Funeral Home, HV/GB	218 Curling Street	Corner Brook	NL	A2H 3J4
Fillatre's Funeral Home, Mark's Ave	218 Curling Street	Corner Brook	NL	A2H 3J4
Fillatre's Stephenville Xing	218 Curling Street	Corner Brook	NL	A2H 3J4
Fillatre's, Port Au Choix	218 Curling Street	Corner Brook	NL	A2H 3J4
Fillatre's, Port Aux Basques	218 Curling Street	Corner Brook	NL	A2H 3J4
Fogo Island Funeral Home	P.O. Box 13	Joe Batts Arm	NL	A0G 2X0
Green Bay Funeral Home	P. O. Box 730	Springdale	NL	A0J 1T0
Green's Funeral Home	P. O. Box 138	Winterton	NL	A0B 3M0
Hickey's Funeral Home-Holyrood	P. O. Box 419	Holyrood	NL	A0A 2R0
Holloway's Funeral Home	P. O. Box 42	Whitbourne	NL	A0B 3K0
Hopkin's Funeral Home--N. Bay	P. O. Box 262	Old Perlican	NL	A0A 3G0
Hopkin's Funeral Home--Old Perlican	P. O. Box 262	Old Perlican	NL	A0A 3G0
Hoskins' Funeral Home--B. Falls	P. O. Box 189	Bishop's Falls	NL	A0H 1C0
Hoskins' Funeral Home--Botwood	P. O. Box 189	Bishop's Falls	NL	A0H 1C0
Hoskins' Funeral Home--GF/Windsor	P. O. Box 189	Bishop's Falls	NL	A0H 1C0
Hussey's Funeral Home	2 Wilson Avenue	Clarenville	NL	A5A 2B6
Hynes' Coast of Bays Funeral Home	P. O. Box 44	St. Alban's	NL	A0H 2E0
Isles Funeral Home Ltd.	P. O. Box 189	Twillingate	NL	A0G 4M0
James J. Hickey Mem. Funeral Home	P. O. Box 419	Holyrood	NL	A0A 2R0
K. M. Fillatre Funeral Home--Rdktn	P. O. Box 604	St. Anthony	NL	A0K 4S0
K.M.Fillatre Funeral Home--St. Atny	P. O. Box 604	St. Anthony	NL	A0K 4S0
Kittiwake Funeral Home	P. O. Box 39	Wesleyville	NL	A0G 4R0
Kittiwake Funeral Home-Musgrave Hbr	P. O. Box 39	Wesleyville	NL	A0G 4R0
Lynch's Funeral Home Ltd.--Spaniard's Bay	P. O. Box 267	Placentia	NL	A0B 2Y0
Maher's Funeral Home	P. O. Box 151	Freshwater	NL	A0B 1W0
Moore's Funeral Home	P. O. Box 429	Clarke's Beach	NL	A0A 1W0
Moore's Funeral Home--Bay Roberts	P. O. Box 429	Clarke's Beach	NL	A0A 1W0
New World Island Funeral Home	P. O. Box 360	Summerford	NL	A0G 4E0
Noel's Funeral Home--Carbonear	P. O. Box 1001	Harbour Grace	NL	A0A 2M0
Noel's Funeral Home--Hbr Grace	P. O. Box 1001	Harbour Grace	NL	A0A 2M0
Noel's Funeral Home--Western Bay	P. O. Box 1001	Harbour Grace	NL	A0A 2M0
Oram's Funeral Home	P. O. Box 10	Glovertown	NL	A0G 2L0
Oram's Funeral Home--Dover	P. O. Box 10	Glovertown	NL	A0G 2L0
Parson's Funeral Home	63 North Main Street	Deer Lake	NL	A8A 1X1
Pendergast's Funeral Home	P. O. Box 906	Bell Island	NL	A0A 4H0
Peninsula Funeral Home	P. O. Box 548	Marystown	NL	A0E 2M0
Penney's Funeral Home	P. O. Box 385	Labrador City	NL	A2V 2K6
Pritchett's Funeral Home	P. O. Box 796	Gambo	NL	A0G 1T0
Random Island Funeral Home	P. O. Box 69	Hickman's Harbour	NL	A0C 1P0
Russell's Funeral Home-Pr. Rupert	57 Prince Rupert Dr.	Stephenville	NL	A2N 2Y9
Russell's Funeral Home--Queen St.	P. O. Box 104	Stephenville	NL	A2N 2Y9
Russell's Funeral Home--Steph.Xing	P. O. Box 104	Stephenville	NL	A2N 2Y9
Ryan's Funeral Services Ltd.	P. O. Box 306	Bay Bulls	NL	A0A 1C0
Serenity Funeral Home--Burin	P. O. Box 429	Burin Bay Arm	NL	A0E 1G0
Slade's Funeral Home--Bay Roberts	P. O. Box 324	Carbonear	NL	A1Y 1B7
Slade's Memorial Services Ltd.	P. O. Box 324	Carbonear	NL	A1Y 1B7
Spencer's Funeral Home	P. O. Box 248	Harbour Breton	NL	A0H 1P0
Spencer's Funeral Home--St. Alban's	P. O. Box 248	Harbour Breton	NL	A0H 1P0
Squire's Funeral Home	P. O. Box 10	Eastport	NL	A0G 1Z0
Stacey's Funeral Home Gander	P. O. Box 539	Gander	NL	A1V 2E1

Stacey's Funeral Home--Carmanville	P. O. Box 539	Gander	NL	A1V 2E1
Strathie's Funeral Home	P. O. Box 305	Bonavista	NL	A0C 1B0
Strathie's Funeral Home-Catalina	P. O. Box 305	Bonavista	NL	A0C 1B0
Sunset Memorial Funeral Home	10 Bayley Street	Gr. Falls/Windsor	NL	A2A 2T5
Warren's Funeral Home--Dildo	P. O. Box 123	Dildo	NL	A0B 1P0
Warren's Funeral Home--Gr. Bank	P.O. Box 434	Grand Bank	NL	A0E 1W0
Wimbleton's Funeral Home	22 Main Street	Baie Verte	NL	A0K 1B0
Wiseman's Funeral Homes--Burin	P. O. Box 548	Marystown	NL	A0E 2M0
Wiseman's Funeral Homes--Fortune	P. O. Box 548	Marystown	NL	A0E 2M0
Wiseman's Funeral Homes--Marystown	P. O. Box 548	Marystown	NL	A0E 2M0
Woolfrey, Gordon Funeral Home	P. O. Box 121	Lewisporte	NL	A0G 3A0
Young's Funeral Home	2 Wilson Avenue	Clareville	NL	A5A 2B6

Number of Customers listed: 88
Generated On: 09/13/2010

EMBALMERS AND FUNERAL DIRECTORS BOARD OF NL
Valda Pitcher, Board Secretary

Sept 24

HIGHWAY TRAFFIC ACT

TRAFFIC REGULATIONS

PUBLISHED BY AUTHORITY

Pursuant to the power delegated by the Minister of Transportation and Works under section 189 of the *Highway Traffic Act*, and pursuant to the authority conferred by section 414 (2) (oo) of the *Municipalities Act*, 1999, the Town of Conception Bay South hereby enacts the following Regulations which were adopted at a Public Council Meeting held on the 10th day of August, 2010.

WOODROW FRENCH
Mayor

1. TITLE

These Regulations shall be known and cited as "The Town of Conception Bay South Traffic Regulations."

2. DEFINITIONS

In these Regulations, the following words, unless the context otherwise requires, shall have the following meanings:

- (a) "Bus" means a motor vehicle designed or used for the transportation of passengers with a seating capacity of 10 or more in addition to the driver, but excluding those motor vehicles when used for personal transportation by the owner or with the owner's permission.
- (b) "Commercial Motor Vehicle" means a vehicle designated to carry goods and persons and includes a bus, a school bus, a truck (excluding vehicles 1 ¼ tones and under), a truck trailer and other motor vehicles designed for commercial use but does not include camper type vehicles designed or adopted exclusively for recreational purposes.
- (c) "Council" means the Town Council of Conception Bay South.
- (d) "Crosswalk" means:
 - (i) Any part of a roadway at an intersection or elsewhere distinctly indicated for pedestrian crossing by signs or by lines or other markings on the surface; or

- (ii) The part of a roadway at an intersection that is included within the connection of the lateral lines of the sidewalks of the opposite sides of a highway, measured from the curbs, or in the absence of curbs, from the edge of the roadway.
- (e) "Driveway" means a clearly defined private roadway, path or passage or a like opening or space which is wide enough, but not wider than is necessary for the passage of a motor vehicle, whereby the owner, occupier or user of property has vehicular access from the roadway to a point within the property.
- (f) "Emergency Vehicle" means:
 - (i) A motor vehicle driven by a constable or by a member of the police branch of any of Her Majesty's Armed Forces or a peace officer being a member of the Royal Newfoundland Constabulary or the Royal Canadian Mounted Police where there is an urgent emergency justifying a rate of speed in excess of any maximum rate of speed provided for in these Regulations;
 - (ii) A motor vehicle carrying firefighting equipment in responding to an alarm of fire;
 - (iii) An ambulance responding to a call or transporting a patient where there is an urgent emergency justifying a rate of speed in excess of any maximum rate of speed provided for in these Regulations; or
 - (iv) A motor vehicle where there is an urgent emergency.
- (g) "Highway" means a place or way, including a structure forming part of the place or way, designed and intended for, or used by the public for the passage of traffic and includes all the space between the boundary lines of the place or way.
- (h) "Intersection" means the area enclosed within the prolongation or connection of the lateral curb lines or if there are no curb lines, the lateral boundary lines of two or more highways that join one another at an angle, whether or not one of the highways cross the other.
- (i) "Motor Vehicle" means a vehicle propelled, driven or controlled otherwise than by muscular power, other than a trailer or a vehicle running on fixed rails.
- (j) "Municipal Enforcement Officer" means for the purpose of these Regulations a peace officer with the powers as outlined in the *Municipalities Act*, M-24, SNL 1999 and amendments and as outlined in the *Highway Traffic Act*, RSNL 1990 cH-3 and amendments.
- (k) "Operator" means a person driving a motor vehicle on a highway or who has the care or control of the motor vehicle on a highway whether in motion or not.
- (l) "Owner" means:
 - (i) The person who holds the legal title to a vehicle; or
 - (ii) In the case of a vehicle that is registered, the person in whose name it is registered.
- (m) "Park" means to permit a vehicle whether occupied or not, to stand otherwise than temporarily for the immediate purpose of and while actually engaged in loading or unloading goods or taking up or setting down passengers or in obedience to traffic Regulations or traffic signs or the direction of a traffic officer.
- (n) "Pedestrian" means a person on foot, a handicapped person in a wheelchair, or a child in a carriage or on a sleigh being pushed or pulled.
- (o) "Persons" means any persons, firm, partnership, association, corporation, or any organization of any kind.
- (p) "Regulations" means Conception Bay South Traffic Regulations made under the authority of the *Highway Traffic Act* and amendments and the *Municipalities Act* and amendments.
- (q) "Roadway" means a portion of a highway that is improved, designed, or ordinarily used for vehicular traffic, but does not include the shoulder unless the shoulder is paved, and where a highway includes two or more

separate roadways, the term "roadway" refers to any one roadway separately and not to all of the roadways collectively.

- (r) "School bus" means a motor vehicle:
 - (i) Designed or used to carry 7 or more passengers, in addition to the driver;
 - (ii) Owned, operated by or contracted to a school board or agent of a school board; and
 - (iii) Used to transport children to or from school or to and from places other than school for the purpose of school related activities.
- (s) "Sidewalk" means that portion of a highway between the curb lines or the lateral lines of a roadway and the adjacent property lines set apart for the use of pedestrians and includes any part of a highway set apart or marked as being for the exclusive or intended use of pedestrians and is considered to include an area of a highway lying between the curb lines or the lateral lines of a roadway and that portion of a highway set apart for the use of pedestrians.
- (t) "Stop" when required means the complete cessation of movement.
- (u) "Stop" or "Stand" when prohibited means any stopping or standing of a vehicle whether occupied or not except when necessary to avoid conflict with other traffic or in compliance with the direction of a traffic officer or traffic control device or signal.
- (v) "Town" means the Town of Conception Bay South.
- (w) "Traffic" includes vehicles, pedestrians and animals while using a highway for the purpose of travel.
- (x) "Traffic Officer" means any person appointed by Council to enforce these Regulations, including a Municipal Enforcement Officer.
- (y) "Traffic Sign" includes all traffic control signals, warning sign posts, direction posts, signs, lines, marks or other devices for the guidance or persons using highways.
- (z) "Vehicle" means a device in, upon or by which a person or property may be transported or driven upon a highway.

3. COUNCIL AUTHORITY

- (a) The Council may cause or permit traffic lights or signs to be placed on or near any highway within the limits of the Town.
- (b) Traffic lights or signs erected or authorized under subsection (1) of these Regulations may be signs for any of the following purposes;
 - (i) To regulate the movement of traffic;
 - (ii) To indicate the route to be followed by traffic;
 - (iii) To restrict or prohibit the use of any part of any highway, other than a main highway designed as such by the Minister of Transportation and Works, within the limits of the Town;
 - (iv) To indicate maximum speed limits in any area or on any part of any highway within the limits of the Town, so that vehicles driven in excess of such speed shall be taken to have failed to conform to the indication given by the sign;
 - (v) To restrict or prohibit the parking of vehicles in any area or on any part of any highway within the limits of the Town;
 - (vi) To restrict or prohibit temporarily the use of any highway, other than a main highway designated as such by the Minister of Transportation and Works, or any part of any highway within the limits of the Town, whenever, owing to the likelihood of danger to the public or serious damage to the

highway, it appears to the Council to be necessary; and to limit the loads of vehicles owing to the condition of the highway if the Council deems it necessary, provided that the traffic lights or signs shall not apply to any person granted a permit in writing by the Council to use the highway in case of an emergency;

- (vii) To warn users of the highway of the need for special caution;
 - (viii) To convey information to users of the highway within the limits of the Town;
 - (ix) To set out proper pedestrian crossing on any highway within the limits of the town; and
 - (x) To restrict or reserve specific parking spaces for the sole use of disabled person.
- (c) Any person who fails to comply with the directions, restrictions, prohibitions, or warnings given by traffic lights or signs erected in accordance with these Regulations shall be guilty of an offence against these Regulations.

4. PARKING OFFENCES

- (a) No person shall stop, stand or park a vehicle on a highway so that the vehicle or any part of it is:
- (i) On a sidewalk or an area generally used by or intended for use by pedestrians;
 - (ii) In front of a public or private driveway or in front of an authorized loading door designated as such;
 - (iii) Within 6 metres of an intersection;
 - (iv) Within 5 metres from any fire hydrant;
 - (v) Within a crosswalk;
 - (vi) Within 6 metres of the approach side of a crosswalk;
 - (vii) Within 8 metres upon the approach to any flashing beacon, stop sign, or traffic-control sign or signal located at any side of a roadway;
 - (viii) Within 6 metres either side of the entrance to or exit from a hotel, church, school, public meeting place, theatre, dance hall or playground;
 - (ix) Within a distance of 20 metres from a bus stop erected under these Regulations, except where otherwise provided by a sign erected under these Regulations;
 - (x) Within 6 metres of a driveway entrance to a fire station;
 - (xi) Alongside or opposite a street excavation or obstruction when stopping, standing or parking obstructs traffic;
 - (xii) In a place in contravention of a traffic control device that gives notice that stopping, standing or parking is there prohibited or restricted;
 - (xiii) Parked on the left side of the highway in the direction it is heading, excepting where such parking is designated by proper signs erected by Council;
 - (xiv) Within 150 metres of any site where a fire is in progress unless permission has been obtained from a police constable, excepting a fire engine, ambulance, clergy car, police car, medical doctor's car or nurse's car;
 - (xv) Parked in such a manner as to interfere with, hinder or obstruct the normal flow of traffic;
 - (xvi) Parked on highway property between the curb or edge or the roadway and the boundary line of the highway;

- (xvii) On any property classified as an easement or upon which Council grants a permit;
 - (xviii) For the purpose of displaying the vehicle for sale;
 - (xix) For the purpose of washing, greasing or repairing the vehicle, except for such repairs as have been necessitated by an emergency;
 - (xx) Parked in an area designated as a parking space for disabled persons only.
- (b) No person shall double park any motor vehicle on any highway within the limits of the Town.
 - (c) No person shall park or stop any vehicle on any roadway unless on the right hand side of the roadway having regard to the direction in which the vehicle was proceeding with the right front and rear wheels parallel to and not more than thirty (30) centimeters from the curb where there is a raised curb, or where there is no curb or a rolled curb, with the right front and rear wheels parallel to and as near the right hand limit of the roadway as is practical without stopping or parking over a sidewalk or footpath or over any part of the road where grass is grown or which is not intended for the use of vehicles.
 - (d) No person shall stand, stop or park or drive a vehicle upon any highway or public area within the Town in contravention to any signs that may be posted by Council.

5. COMMERCIAL VEHICLES OFFENCES

- (a) The Council is hereby authorized to determine and designate these streets in the Town, which shall be used by commercial motor vehicles.
- (b) These Regulations shall not prohibit:
 - (i) The operation of commercial motor vehicles upon any street where necessary to the conduct of business at a destination point, provided that streets upon which such traffic is permitted are used until reaching the intersection nearest the destination point;
 - (ii) The operation of an emergency vehicle upon any street in the Town;
 - (iii) The operation of commercial motor vehicle owned or operated by the Town, Public Utilities or any contractor engaged in the repair, delivery of materials, maintenance or construction of streets, street improvements, or street utilities within the Town of Conception Bay South; or
 - (iv) The operation of commercial motor vehicles upon any officially established detour in the Town of Conception Bay South.
- (c) No person shall park any commercial motor vehicle in any residential zone in the Town of Conception Bay South, unless a permit for the parking has been issued by the Council in conformity with the Conception Bay South Commercial Motor Vehicle Regulations.
- (d) An application for a permit to park any commercial motor vehicle in any residential zone shall be made to the Council in such form as prescribed by the Council and every applicant for a permit shall furnish with the application such information as Council may require.
- (e) The Council shall attach to the permit such conditions as it deems fit for the parking of any commercial motor vehicle in a residential zone and may permit parking for such limited time as it deems fit.
- (f) The driver of a commercial vehicle loading or unloading freight within the Town shall, if possible, place such vehicle off the highway into some private parking space; where no alternative loading or unloading point exists, place such vehicles as near as possible to the curb or side of the highway and load or unload as quickly as possible, but in no case shall a driver place a commercial vehicle in such a position as to excessively hinder or obstruct the normal flow of traffic either vehicular or pedestrian.

6. SNOW CLEARING

- (a) No person shall park any unattended motor vehicle on any highway or municipal parking area in such a way as to interfere with, hinder or obstruct snowclearing operations.
- (b) During the period from the first day of December in each year to the last day of April in the succeeding year, both days inclusive, no person shall park an unattended vehicle(s), regardless of weather conditions, upon any highway within the Town of Conception Bay South between the hours of 12 midnight and 10:00 a.m.
- (c) Any motor vehicle parked contrary to Regulation 6 (a) or (b) may be towed away by Council or their representatives, at the owner's risk and expense, to a place selected by the Council or person so authorized.

7. OTHER LIMITATIONS

- (a) No structure, object or vehicle, other than a vehicle licensed under the *Highway Traffic Act*, shall move over a highway or bridge, within the Town except with the written approval of Council.
- (b) Notwithstanding subsection (1), no vehicle that is propelled over tracks or other device, other than tires, shall move over a highway or bridge, within the Town except with the written approval of Council.

8. ABANDONED VEHICLES

- (a) When a vehicle:
 - (i) Is standing, stopped or parked upon a highway within the Town limits or bridge in such a position that it may;
 - (1) Interfere with the pedestrian or vehicular traffic;
 - (2) Constitute a hindrance to the maintenance, repair or improvement thereof;
 - (3) Hinder or impede the ploughing of or removal of snow or ice therefrom; or
 - (4) Hinder or impede the carrying out of any undertaking of the Council; or
 - (ii) Has been apparently abandoned upon a highway within the Town limits, sidewalk or bridge for longer than twenty-four (24) hours; or
 - (iii) Has been left unattended upon any highway within the Town limits, sidewalk or bridge in contravention of these Regulations,

the Council or any person authorized for the purpose by the Council may remove that vehicle, at the owner's risk and expense, to a place selected by the Council or person so authorized.
- (b) The Council may dispose of any vehicle removed and stored under these Regulations, by Public Sale or Auction, if the vehicle is not claimed within ninety (90) days of removal and storage.
- (c) Prior to the return of the vehicle to its owner, the owner shall pay the costs of its removal and storage as determined by the Council and where such costs are not paid by the owner, the council may sell the vehicle on Public Sale or Auction to satisfy such costs upon notice to the owner, including the costs, if any, of or incidental to the Public Sale or Auction.

9. ANTI LITTER OFFENCES

- (a) A person shall not throw or deposit or cause to be thrown, deposited or left on a highway, glass, nails, tacks scraps of metal or other material, rubbish, refuse or waste which may injure tires of vehicles.

- (b) A person who removes a wrecked or damaged vehicle from a highway shall remove glass or any injurious substance or thing dropped upon the highway from the vehicle.
- (c) No person shall place any object or structure (including objects or structures used for street sports), on any street which interferes with the flow of traffic. Any object or structure so placed may be removed by any person authorized by Council, at the owner's expense.

10. OFFENCE

Notwithstanding the *Summary Proceedings Act*, any person who violates any of the provisions of these Regulations, shall be guilty of an offence and shall be liable on summary conviction to a fine of not more than the maximum and not less than the minimum amount as prescribed for the offence in Schedule "A" to these Regulations and appearing in that Schedule opposite the number or letter or both of the Regulations, subsection or paragraph.

11. REPEAL OF PREVIOUS REGULATIONS AND AMENDMENTS

All previous Town of Conception Bay South Traffic Regulations and amendments are repealed.

12. COMPLIANCE WITH OTHER ACTS AND REGULATIONS

Nothing in these Regulations serves to exempt any person from obtaining any license, permission, permit, authority or approval required by any other regulation of the Town or any statute or regulation of the Province of Newfoundland and Labrador, and in such cases where more than one regulation or statute applies the more restrictive regulation or statute shall apply.

13. EFFECTIVE DATE

These Regulations shall come into force on 11th day of August, 2010.

In witness whereof the Seal of the Town of Conception Bay South has been affixed hereto and these regulations have been signed by the Mayor and the Chief Administrative Officer on behalf of Council on this 11th day of August, 2010.

WOODROW FRENCH
Mayor

KEITH ARNS
Chief Administrative Officer

SCHEDULE A
Town of Conception Bay South
Schedule of Fines

section	subsection		offence	fine
4	(a)	(i)	Parking on sidewalk	\$50.00
		(ii)	Parking in front of public or private driveway	\$50.00
		(iii)	Parking within 6 metres of intersection	\$50.00
		(iv)	Parking within 5 metres of fire hydrant	\$50.00
		(v)	Parking within a crosswalk	\$100.00
		(vi)	Parking within 6 metres of a crosswalk	\$50.00
		(vii)	Parking within 8 metres of a traffic control device	\$50.00
		(viii)	Parking within 6 metres of an entrance or exit to hotel, church, school, public meeting place, theatre, dance hall or playground	\$50.00
		(ix)	Parking within 20 metres of a bus stop	\$50.00
		(x)	Parking within 6 metres of a fire station	\$50.00
		(xi)	Parking opposite or beside a street excavation	\$50.00
		(xii)	Parking contrary to signs	\$100.00
		(xiii)	Parking on left side of highway	\$50.00
		(xiv)	Parking within 150 metres of the site of a fire	\$50.00
		(xv)	Parking as to obstruct traffic	\$50.00
		(xvi)	Parking on highway property outside curb	\$50.00
		(xvii)	Parking on property classified as easement	\$50.00
		(xviii)	Parking on highway to display vehicle for sale	\$50.00
		(xix)	Parking on highway for repairs	\$50.00
		(xx)	Parking in area for disabled persons	\$75.00
	(b)		Double Parking	\$50.00
	(c)		Parking away from the curb	\$50.00
	(d)		Stop stand or park in area prohibited by signs	\$30.00
5	(c)		Commercial motor vehicles parking in residential zones without a permit	\$100.00
6	(a)		Parking so as to obstruct snow clearing	\$50.00
	(b)		Parking on a highway or municipal parking area between 12 midnight and 10:00 am	\$50.00
7	(a)		Movement of structure, object or vehicle not licensed under the <i>Highway Traffic Act</i> without Council approval.	\$50.00
	(b)		Movement of vehicle not on tires without approval of Council	\$50.00
9	(a)		Throwing injurious materials or rubbish on highway	\$50.00
	(b)		Failure to remove glass injurious substance dropped upon the highway from a wrecked vehicle	\$50.00
	(c)		Placing object or structure on a street	\$50.00

Sept 24

URBAN AND RURAL PLANNING ACT

**NOTICE OF REGISTRATION
TOWN OF STEPHENVILLE CROSSING
MUNICIPAL PLAN 2010 AND
DEVELOPMENT REGULATIONS 2010**

Take notice that the TOWN OF STEPHENVILLE CROSSING Municipal Plan 2010 and Development Regulations 2010, adopted on the 10th day of March, 2010 and approved on the 26th day of May, 2010, have been registered by the Minister of Municipal Affairs.

The Stephenville Crossing Municipal Plan 2010 and Development Regulations 2010 come into effect on the day that this notice is published in *The Newfoundland and Labrador Gazette*. Anyone who wishes to inspect a copy of the Stephenville Crossing Municipal Plan 2010 and Development Regulations 2010 may do so at the Town Office, Stephenville Crossing during normal working hours.

TOWN OF STEPHENVILLE CROSSING
Yvonne Young, Town Clerk

Sept 24

LANDS ACT

NOTICE OF INTENT

LANDS ACT, c.36, SNL 1991

NOTICE is hereby given that ELMER ANTHONY of Roberts Arm, NL intends to apply to the Department of Environment and Conservation, two months from the publication of this Notice, to acquire title, pursuant to Section 7(2) (e) of the said Act, to that piece of Crown Land situated within fifteen (15) metres of the waters of Roberts Arm, in the Electoral District of Green Bay for the purpose of Boathouse, Ramp and Wharf and more particularly described as follows:

*Bounded on the North by Ocean
for a distance of 25 m;
Bounded on the East by Ocean
for a distance of 30 m;
Bounded on the South by Road, Orlando Road
for a distance of 25 m
Bounded on the West by Ocean
for a distance of 30 m;
and containing an area of
approximately 750 square metres.*

Any person wishing to object to the application must file the objection, in writing, within one month from the publication of this notice, with reasons for it, to the Minister of Environment and Conservation, and mail to the nearest Regional Lands Office:

(Choose Area Applicable)

c/o Eastern Regional Lands Office, P. O. Box 8700, 5 Mews Place, St. John's, NL, A1B 4J6.

c/o Central Regional Lands Office, P. O. Box 2222, Gander, NL, A1V 2N9.

c/o Western Regional Lands Office, P. O. Box 2006, Noton Building, Corner Brook, NL, A2H 6J8.

c/o Labrador Regional Lands Office, P. O. Box 3014, Station "B", Happy Valley-Goose Bay, NL A0P 1E0.

For further information on the proposed application, please contact ELMER ANTHONY Telephone (613) 549-8284.

Sept 24

NOTICE OF INTENT

LANDS ACT, c.36, SNL 1991

NOTICE is hereby given that KEITH HEALEY of Holyrood, NL intends to apply to the Department of Environment and Conservation, two months from the publication of this Notice, to acquire title, pursuant to Section 7(2) (e) of the said Act, to that piece of Crown Land situated within fifteen (15) metres of the waters of Conception Bay, in the Electoral District of Harbour Main for the purpose of erecting a wharf to moor a pleasure craft and more particularly described as follows:

*Bounded on the North by Shoreline
for a distance of 4 m;
Bounded on the East by Shoreline
for a distance of 4 m;
Bounded on the South by Water
for a distance of 4 m
Bounded on the West by Shoreline
for a distance of 4 m;
and containing an area of
approximately 16 square metres.*

Any person wishing to object to the application must file the objection, in writing, within one month from the publication of this notice, with reasons for it, to the Minister of Environment and Conservation, and mail to the nearest Regional Lands Office:

(Choose Area Applicable)

c/o Eastern Regional Lands Office, P. O. Box 8700, 5 Mews Place, St. John's, NL, A1B 4J6.

c/o Central Regional Lands Office, P. O. Box 2222, Gander, NL, A1V 2N9.

c/o Western Regional Lands Office, P. O. Box 2006, Noton Building, Corner Brook, NL, A2H 6J8.

c/o Labrador Regional Lands Office, P. O. Box 3014, Station "B", Happy Valley-Goose Bay, NL A0P 1E0.

For further information on the proposed application, please contact KEITH HEALEY Telephone (709) 231-2007.

Sept 24

NOTICE OF INTENT

LANDS ACT, c.36, SNL 1991

NOTICE is hereby given that STEWART R. MOREY of La Scie, NL intends to apply to the Department of Environment and Conservation, two months from the publication of this Notice, to acquire title, pursuant to Section 7(2) (e) of the said Act, to that piece of Crown Land situated within fifteen (15) metres of the waters of La Scie Harbour, in the Electoral District of Baie Verte-Springdale for the purpose of a wharf and more particularly described as follows:

*Bounded on the North by Crown Land
for a distance of 20 m;
Bounded on the East by La Scie Harbour
for a distance of 20 m;
Bounded on the South by
property of Stewart Morey
for a distance of 20 m
Bounded on the West by La Scie Highway
for a distance of 20 m;
and containing an area of
approximately 400 square metres.*

Any person wishing to object to the application must file the objection, in writing, within one month from the publication of this notice, with reasons for it, to the Minister of Environment and Conservation, and mail to the nearest Regional Lands Office:

(Choose Area Applicable)

c/o Eastern Regional Lands Office, P. O. Box 8700, 5 Mews Place, St. John's, NL, A1B 4J6.

c/o Central Regional Lands Office, P. O. Box 2222, Gander, NL, A1V 2N9.

c/o Western Regional Lands Office, P. O. Box 2006, Noton Building, Corner Brook, NL, A2H 6J8.

c/o Labrador Regional Lands Office, P. O. Box 3014, Station "B", Happy Valley-Goose Bay, NL A0P 1E0.

For further information on the proposed application, please contact STEWART MOREY Telephone (709) 675-2476.

Sept 24

NOTICE OF INTENT

LANDS ACT, c.36, SNL 1991

NOTICE is hereby given that THE TOWN OF BIRCHY BAY, NL intends to apply to the Department of Environment and Conservation, two months from the publication of this Notice, to acquire title, pursuant to Section 7(2) (e) of the said Act, to that piece of Crown Land situated within fifteen (15) metres of the waters of Birchy Bay, in the Electoral District of Lewisporte for the purpose of installing a Slipway/Boat Launch and more particularly described as follows:

*Bounded on the North by Ocean Waters
for a distance of 5.88 m;
Bounded on the East by Shoreline*

*for a distance of 73.53 m;
Bounded on the South by Beechside Road
for a distance of 5.88 m
Bounded on the West by Shoreline
for a distance of 73.53 m;
and containing an area of
approximately 432.36 square metres.*

Any person wishing to object to the application must file the objection, in writing, within one month from the publication of this notice, with reasons for it, to the Minister of Environment and Conservation, and mail to the nearest Regional Lands Office:

(Choose Area Applicable)

c/o Eastern Regional Lands Office, P. O. Box 8700, 5 Mews Place, St. John's, NL, A1B 4J6.

c/o Central Regional Lands Office, P. O. Box 2222, Gander, NL, A1V 2N9.

c/o Western Regional Lands Office, P. O. Box 2006, Noton Building, Corner Brook, NL, A2H 6J8.

c/o Labrador Regional Lands Office, P. O. Box 3014, Station "B", Happy Valley-Goose Bay, NL A0P 1E0.

For further information on the proposed application, please contact CYNTHIA BAKER – TOWN CLERK Telephone (709) 659-3221.

Sept 24

NAVIGABLE WATERS PROTECTION ACT

**(RSC. 1985, C. N-22) AS AMENDED
BY PART 7 OF
THE BUDGET IMPLEMENTATION ACT
2009, S.C. 2009, C. 2**

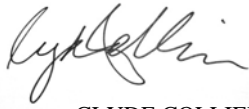
Gray Aqua Group Ltd. hereby gives notice that an application has been made to the Minister of Transport, Infrastructure and Communities pursuant to the *Navigable Waters Protection Act* for approval of the work described herein and its site and plans.

Pursuant to section 9 of the said Act, Gray Aqua Group Ltd. has deposited with the Minister of Transport, Infrastructure and Communities, and in the Town Office of the electoral district of Random Burin – St. George's at St. Alban's, Newfoundland and Labrador under deposit number 8200-10-700240 a description of the following work, its site and plans:

Proposed Aquaculture Site in, Jeddore Lake, Bay d'Espoir, near the Salmon Dam.

Comments regarding the effect of this work on marine navigation may be directed to: The Superintendent, Navigable Waters Protection Program, Transport Canada, P.O. Box 1300, St. John's NL, A1C 6H8. However, comments will be considered only if they are in writing and are received not later than 30 days after the date of this notice. Although all comments conforming to the above will be considered, no individual response will be sent.

Signed at Conne River, NL this 13th day of September, 2010



CLYDE COLLIER

Sept 24

S.R.C. 1985, CHAPITRE N-22

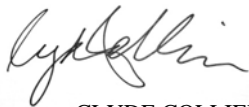
Gray Aqua Group Ltd. donne avis, par les présentes, qu'une demande a été déposée auprès du ministre des Transports, Infrastructure and Communities en vertu de la Loi sur la protection des eaux navigables, pour l'approbation de l'ouvrage décrit dans les présentes, ainsi que son emplacement et ses plans.

Gray Aqua Group Ltd. a, en vertu à l'article 9 de ladite loi, déposé auprès du ministre des Transports, Infrastructure and Communities, et in the town/office in the electoral district of Random – Burin – St. George's à St. Alban's sous le numéro de dépôt 8200-10-700240 une description de l'ouvrage suivant, son emplacements et ses plans:

Proposed Aquaculture Site Dans Jeddore Lake, Bay d'Espoir, near the Salmon Dam.

Les commentaires relatifs à l'effet l'ouvrage sur la navigation maritime peuvent être adressés au Surintendant, Programme de protection des eaux navigables, Transports Canada, P.O. Box 1300, St. Johns NL A1C 6H8. Veuillez noter que seuls les commentaires faits par écrit au plus tard (30) jours suivant la date de cet avis seront considérés. Même si tous les commentaires répondant à ces exigences sont considérés, aucune réponse individuelle ne sera envoyée.

Fait à Conne River, NL ce 13 jour de Septembre, 2010



CLYDE COLLIER

Sept 24

QUIETING OF TITLES ACT

SCHEDULE "H.1"

**2010 01 G 4413
IN THE SUPREME COURT OF
NEWFOUNDLAND AND LABRADOR
TRIAL DIVISION (GENERAL)**

IN THE MATTER OF an Application of DERRICK WILLIAMS as Administrator of the Estates and Effects of Jeremiah Williams, Testate, and Josephine Williams, Intestate, to have title to that piece or parcel of land situate

and being on the Southern Shore Highway of Bay Bulls, in the Province of Newfoundland and Labrador containing an area of Four Decimal Three Six One Seven (4.3617) Hectares, investigated and declared under the *Quieting of Titles Act*, RSNL 1990, cQ-3.

NOTICE

NOTICE is hereby given to all parties that DERRICK WILLIAMS as Administrator of the Estates and Effects of Jeremiah Williams, Testate, and Josephine Williams, Intestate (hereinafter called the "Owners") have applied to the Supreme Court of Newfoundland and Labrador, Trial Division (General) to have investigated ALL THAT piece or parcel of land situate and being on the Southern Shore Highway of Bay Bulls, in the Province of Newfoundland and Labrador containing an area of Four Decimal Three Six One Seven (4.3617) Hectares, and being abutted as follows, that is to say:

SCHEDULE "A"

Williams Estate

Southern Shore Highway, Bay Bulls

ALL THAT piece or parcel of land situate and being southwest of Southern Shore Highway, in the Town of Bay Bulls, in the Province of Newfoundland, bounded and abutted as follows: that is to say beginning at a point, said point having M.T.M. Grid Co-ordinates (C.M. 53°) [NAD 83] of N 5 241 607.799 and E 318 649.443;

THENCE RUNNING South twenty one degrees twenty three minutes fifty one seconds East (S21°23'51"E), a distance of 10.229 meters by the southwest limits of Southern Shore Highway to a point;

THENCE turning and running South sixty four degrees fifty two minutes thirty seconds West (S64°52'30"W), a distance of 21.404 meters by Crown Land to a point;

THENCE turning and running South eighteen degrees fifty three minutes forty nine seconds East (S18°53'49"E), a distance of 62.713 meters by Crown Land and by land of Patrick Wakeham (R1999 F1900, R101 F789 and Vol. 188 F20) to a point;

THENCE turning and running South thirteen degrees thirty four minutes twenty three seconds East (S13°34'23"E), a distance of 26.878 meters by land of Patrick Wakeham (R1999 F1900, R101 F789 and Vol. 188 F20) to a point;

THENCE turning and running South four degrees eight minutes forty nine seconds West (S04°08'49"W), a distance of 5.882 meters by land of Patrick Wakeham (R1999 F1900, R101 F789 and Vol. 188 F20) to a point;

THENCE turning and running South fifty one degrees seven minutes nineteen seconds East (S51°07'19"E), a distance of 9.225 meters by land of Patrick Wakeham (R1999 F1900, R101 F789 and Vol. 188 F20) to a point;

THENCE turning and running South sixty three degrees thirty one minutes fifty eight seconds East (S63°31'58"E), a distance of 6.087 meters by land of Patrick Wakeham (R1999 F1900, R101 F789 and Vol. 188 F20) to a point;

THENCE turning and running South seventy one degrees forty two minutes fifty two seconds East (S71°42'52"E), a distance of 2.930 meters by land of Patrick Wakeham (R1999 F1900, R101 F789 and Vol. 188 F20) to a point;

THENCE turning and running North eighty one degrees forty one minutes thirty seven seconds East (N81°41'37"E), a distance of 3.024 meters by land of Patrick Wakeham (R1999 F1900, R101 F789 and Vol. 188 F20) to a point;

THENCE turning and running North sixty four degrees forty four minutes twenty one seconds East (N64°44'21"E), a distance of 6.164 meters by land of Patrick Wakeham (R1999 F1900, R101 F789 and Vol. 188 F20) to a point;

THENCE turning and running North thirty eight degrees forty six minutes three seconds East (N38°46'03"E), a distance of 10.219 meters by land of Patrick Wakeham (R1999 F1900, R101 F789 and Vol. 188 F20) to a point;

THENCE turning and running South sixteen degrees eighteen minutes forty two seconds East (S16°18'42"E), a distance of 20.908 meters by southwest limits of Southern Shore Highway to a point;

THENCE turning and running South eighty one degrees thirty eight minutes forty eight seconds West (S81°38'48"W), a distance of 47.244 meters by land of Noel Kelly (Reg. No. 242154) to a point;

THENCE turning and running South five degrees fifty three minutes twelve seconds East (S05°53'12"E), a distance of 7.271 meters by land of Noel Kelly (Reg. No. 242154) to a point;

THENCE turning and running South sixty six degrees fifty three minutes forty nine seconds West (S66°53'49"W), a distance of 297.547 meters by Crown Land to a point;
THENCE turning and running North sixteen degrees thirty minutes thirty seven seconds West (N16°30'37"W), a distance of 79.491 meters by Crown Land to a point;

THENCE turning and running North twelve degrees thirty two minutes forty five seconds West (N12°32'45"W), a distance of 83.322 meters by Crown Land to a point;

THENCE turning and running North seventy nine degrees twenty seven minutes fifty six seconds East (N79°27'56"E), a distance of 67.470 meters by land of Ocean View Properties Limited (Reg No. 141655) to a point;

THENCE turning and running North eighty seven degrees forty two minutes fifty six seconds East (N87°42'56"E), a distance of 54.000 meters by land of Ocean View Properties Limited (Reg No. 141655) to a point;

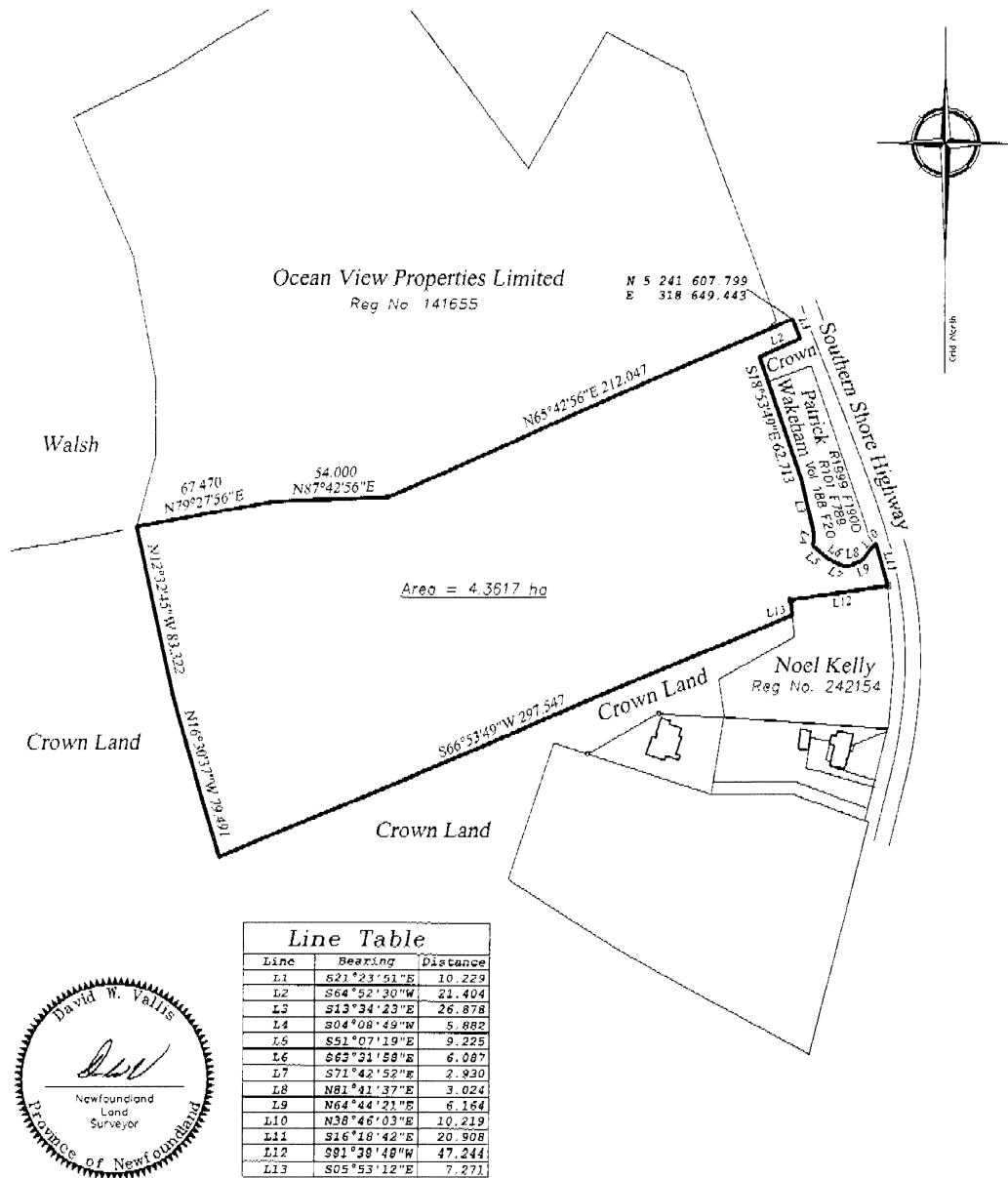
THENCE turning and running North sixty five degrees forty two minutes fifty six seconds East (N65°42'56"E), a distance of 212.047 meters by land of Ocean View Properties Limited (Reg No. 141655) to the PLACE OF BEGINNING and containing in all an area of 4.3617 hectares as more particularly described and delineated on plan T9339, January 8, 2010 hereto annexed.

ALL bearings are referred to Grid North.

All persons having title adverse to the said title claims by the Owner shall file in the Registry of the Supreme Court of Newfoundland and Labrador, Trial Division (General) particulars of such adverse claim and serve the same, together with an Affidavit verifying the same, on or before the 18th day of October, 2010, after which date no party having a claim shall be permitted to file the same or be heard except by leave of the Court and subject to such conditions as the Court may deem just. All adverse claims shall then be registered on such manner as the Supreme Court may direct.

O'DEA, EARLE
Solicitors for the Petitioner/Applicant
PER: Ian S. Patey

ADDRESS FOR SERVICE
323 Duckworth Street
P.O. Box 5955
St. John's, NL
A1C 5X4
Tel: (709) 726-3524
Fax: (709) 726-9600



Notes - This plan certifies the information as of the date shown and only as of this date. All distances are Metric

© D.W. Vallis, Newfoundland Land Surveyor, 2010. Unauthorized use, alteration or reproduction of this property report is prohibited by law as outlined in the Copyright Act. However, use and reproduction thereof by or on behalf of the person to whom this report is addressed is permitted, provided that no alterations whatsoever are made thereto.

For further information contact the author at: (709) 747-5923, Fax: 747-0177, E-Mail: dvallis@nls.gov.nf

[G.M.53][NAD 83][GFS][RTK]

Boundary Survey
Williams Estate
Southern Shore Highway, Bay Bulls

date: Jan 8, 2010

scale: 1:2500

job no.: T9339

TRUSTEE ACT

ESTATE NOTICE

IN THE MATTER OF the Estate and Effects of late ELLA GERTRUDE HOFFE of the Town of Change Islands, in the Province of Newfoundland and Labrador, Retired Person, Deceased.

All persons claiming to be creditors of or who have any claims or demands upon or affecting the Estate of ELLA GERTRUDE HOFFE, the aforesaid deceased, who died at Labrador City, in the Province of Newfoundland and Labrador on or about the 30th day of January, 2010 are hereby requested to send particulars thereof in writing, duly attested, to the undersigned Solicitor for the Executor of the Estate on or before the 30th day of September, 2010 after which date the Executor will proceed to distribute the said Estate having regard only to the claims of which he shall then have had notice.

DATED at the Town of Gander, Newfoundland and Labrador, this 10th day of September, 2010.

BONNELL LAW
Solicitor for the Executor
PER: R. Archibald Bonnell

ADDRESS FOR SERVICE:

Bonnell Law
P.O. Box 563
218 Airport Boulevard
Gander, Newfoundland A1V 2E1
Tel: (709) 651-4949
Fax: (709) 651-4951

Sept 17 & 24

ESTATE NOTICE

IN THE MATTER OF the Estate and Effects of late JOHN TROKE of the Town of Eastport, in the Province of Newfoundland and Labrador, Retired Person, Deceased.

All persons claiming to be creditors of or who have any claims or demands upon or affecting the Estate of JOHN TROKE, the aforesaid deceased, who died at the Town of Gander, in the Province of Newfoundland and Labrador on or about the 27th day of December, 2007 are hereby requested to send particulars thereof in writing, duly attested, to the undersigned Solicitor for the Executors of the Estate on or before the 30th day of September, 2010 after which date the Executors will proceed to distribute the said Estate having regard only to the claims of which they shall then have had notice.

DATED at the Town of Gander, Newfoundland and Labrador, this 9th day of September, 2010.

BONNELL LAW
Solicitor for the Executor
PER: R. Archibald Bonnell

ADDRESS FOR SERVICE:

Bonnell Law
P.O. Box 563
218 Airport Boulevard
Gander, Newfoundland A1V 2E1
Tel: (709) 651-4949
Fax: (709) 651-4951

Sept 17 & 24

ESTATE NOTICE

IN THE MATTER OF the Estate and Effects of late JAMES SHARP of the Town of Crow Head, in the Province of Newfoundland and Labrador, Retired Gentleman, Deceased.

All persons claiming to be creditors of or who have any claims or demands upon or affecting the Estate of JAMES SHARP, the aforesaid deceased, who died at Twillingate, in the Province of Newfoundland and Labrador on or about the 12th day of April, 1890 are hereby requested to send particulars thereof in writing, duly attested, to the undersigned Solicitor for the Administrator of the Estate on or before the 7th day of October, 2010 after which date the Administrator will proceed to distribute the said Estate having regard only to the claims of which he shall then have had notice.

DATED at the Town of Gander, Newfoundland and Labrador, this 13th day of September, 2010.

BONNELL LAW
Solicitor for the Administrator
PER: R. Archibald Bonnell

ADDRESS FOR SERVICE:

P.O. Box 563
218 Airport Boulevard
Gander, Newfoundland A1V 2E1
Tel: (709) 651-4949
Fax: (709) 651-4951

Sept 24 & Oct 1

ESTATE NOTICE

IN THE MATTER OF the Estate and effects of FERNE PIKE, late of North River, in the Province of Newfoundland and Labrador, gentlewoman, deceased

All persons claiming to be creditors of or who have any claims or demands upon or affecting the Estate of FERNE PIKE, the aforesaid deceased who died at North River, in the Province of Newfoundland and Labrador on or about the 20th day of May, writing, duly attested, to the undersigned Solicitor for the Executor of the Estate on or before the 15th day of October, 2010 after which date the Executor will proceed to distribute the said Estate having regard only for the claims of which he shall then have had notice.

DATED at Bay Roberts, in the Province of Newfoundland
and Labrador, this 10th day of September, 2010.

MORROW & MORROW LAW OFFICE.
Solicitor for the Executor
of the Estate of Ferne Pike
PER: William G. Morrow, Q.C.

ADDRESS FOR SERVICE IS:
P.O. Box 870
Bay Roberts, NL
A0A 1G0
Tel: (709) 834-9507
Fax: (709) 834-9207

Sept 24



THE NEWFOUNDLAND AND LABRADOR GAZETTE

PART II

SUBORDINATE LEGISLATION

FILED UNDER THE STATUTES AND SUBORDINATE LEGISLATION ACT

Vol. 85

ST. JOHN'S, FRIDAY, SEPTEMBER 24, 2010

No. 38

NEWFOUNDLAND AND LABRADOR

REGULATIONS

NLR 86/10

NLR 87/10

NLR 88/10

NLR 89/10



**NEWFOUNDLAND AND LABRADOR
REGULATION 86/10**

Pedestrian Trails Designation Regulations (Amendment)
under the
Pedestrian Trails Liability Protection Act

(Filed September 21, 2010)

Under the authority of section 5 of the *Pedestrian Trails Liability Protection Act*, I make the following regulations.

Dated at St. John's, September 21, 2010.

Terry French
Minister of Tourism, Culture and Recreation

REGULATIONS

Analysis

1. S.2 R&S
East Coast Trail

NLR 44/10

1. Section 2 of the *Pedestrian Trails Designation Regulations* is repealed and the following substituted:

East Coast Trail

2. The East Coast Trail, described in Licence to Occupy Numbers 116109, 116385, 116547, 117581, 117747, 116626 and 110676, as assigned under the *Lands Act*, is designated as a trail to which the Act applies.

©Earl G. Tucker, Queen's Printer



NEWFOUNDLAND AND LABRADOR REGULATION 87/10

Seniors' Benefit Regulations, 2007 (Amendment)
under the
Income Tax Act, 2000
(O.C. 2010-238)

(Filed September 21, 2010)

Under the authority of section 68 of the *Income Tax Act, 2000*, the Lieutenant-Governor in Council makes the following regulations.

Dated at St. John's, September 3, 2010.

Gary Norris
Clerk of the Executive Council

REGULATIONS

Analysis

- | | |
|----------------------------------------------|----------------------------|
| 1. S.3 Amdt.
Seniors' benefit calculation | 2. S.4 Amdt.
Indexation |
|----------------------------------------------|----------------------------|

NLR 119/07
as amended

1. Paragraphs 3(1)(a) and (b) of the *Seniors' Benefit Regulations, 2007* are repealed and the following substituted:

- (a) where there is no qualified relation, \$900 for an eligible individual who is 64 years of age or over at any time in the taxation year, reduced by 11.66% of the amount by which the eligible individual's adjusted income for the taxation year exceeds \$26,165; and

- (b) where there is a qualified relation, \$900 for one eligible individual who is 64 years of age or over any time in the taxation year, reduced by 11.66% of the amount by which the combined adjusted income for the eligible individual and qualified relation for the taxation year exceeds \$26,165.

2. Section 4 of the regulations is amended by renumbering it as subsection 4(1) and by adding immediately after that subsection the following:

- (2) Notwithstanding subsection (1), indexation required by that subsection shall not be carried out before the 2011 taxation year.

©Earl G. Tucker, Queen's Printer



**NEWFOUNDLAND AND LABRADOR
REGULATION 88/10**

*Notice of Protected Water Supply Area of Southeast Pond, WS-S-0428,
Local Service District of Loon Bay
under the
Water Resources Act*

(Filed September 21, 2010)

Under the authority of section 39 of the *Water Resources Act*, I designate the area generally known as the *Southeast Pond Water Supply Area, WS-S-0428*, for the Local Service District of Loon Bay as a protected water supply area.

Dated at St. John's, August 26, 2010.

Charlene Johnson
Minister of Environment and Conservation

NOTICE

This area includes all lands in the Provincial Electoral District of Lewisporte abutted and bounded as follows:

Beginning at a point having scaled UTM coordinates of easting 654 031 metres and northing 5 438 823 metres;

Then running in a northwesterly direction for a distance of 4102 metres, more or less, to a point having scaled UTM coordinates of easting 651 738 metres and northing 5 442 224 metres;

Then running in a northeasterly direction for a distance of 4222 metres, more or less, to a point having scaled UTM coordinates of easting 653 445 metres and northing 5 446 085 metres;

Then running in a northeasterly direction for a distance of 5027 metres, more or less, to a point having scaled UTM coordinates of easting 656 956 metres and northing 5 449 683 metres;

Then running in a northerly direction for a distance of 4570 metres, more or less, to a point having scaled UTM coordinates of easting 655 208 metres and northing 5 453 905 metres;

Then running in a northeasterly direction for a distance of 4771 metres, more or less, to a point having scaled UTM coordinates of easting 658 268 metres and northing 5 457 566 metres;

Then running in a northerly direction for a distance of 2444 metres, more or less, to a point having scaled UTM coordinates of easting 657 495 metres and northing 5 459 884 metres;

Then running in a northeasterly direction for a distance of 455 metres, more or less, to a point having scaled UTM coordinates of easting 657 751 metres and northing 5 460 261 metres;

Then running in a northerly direction for a distance of 1150 metres, more or less, to a point having scaled UTM coordinates of easting 658 105 metres and northing 5 461 355 metres;

Then running in a southeasterly direction for a distance of 3841 metres, more or less, to a point having scaled UTM coordinates of easting 660 749 metres and northing 5 458 569 metres;

Then running in a easterly direction for a distance of 2127 metres, more or less, to a point having scaled UTM coordinates of easting 662 876 metres and northing 5 458 599 metres;

Then running in a southwesterly direction for a distance of 6029 metres, more or less, to a point having scaled UTM coordinates of easting 659 864 metres and northing 5 453 376 metres;

Then running in a southerly direction for a distance of 9931 metres, more or less, to a point having scaled UTM coordinates of easting 657 304 metres and northing 5 443 781 metres;

Then running in a southwesterly direction for a distance of 5941 metres, more or less, to the point of commencement.

All coordinates refer Zone 21 of the NAD 83 Universal Transverse Mercator Projection.

The Notice of Protected Water Supply Area of Southeast Pond, Newfoundland and Labrador Regulation 27/03, is repealed.

©Earl G. Tucker, Queen's Printer



**NEWFOUNDLAND AND LABRADOR
REGULATION 89/10**

*Newfoundland and Labrador T'Railway
Provincial Park Proclamation (Amendment)
under the
Provincial Parks Act*

(Filed September 21, 2010)

Under the authority of subsection 4(2) of the *Provincial Parks Act*, I make the following order.

Dated at St. John's, September 21, 2010.

Charlene Johnson
Minister of Environment and Conservation

ORDER

Analysis

1. Sch. Amdt.

NLR 93/97
as amended

1. The *Newfoundland and Labrador T'Railway Provincial Park Proclamation* is amended by adding at the end of the Schedule the following:

The area described in this Schedule is decreased by removing the following parcels of land:

1. Parcel 1: Colliers Drive at Gallants, Humber West

All that piece or parcel of land lying northeast of Colliers Drive at Gal-lants, in the Electoral District of Humber West, being further bounded and described as follows, that is to say:

Beginning at a survey marker on the northeast limit of Colliers Drive, that point being the southerly angle of this described parcel of land, that angle having coordinates of north 5,396,049.067 and east 324,325.394;

Running then from that point of beginning by the northwest limit of the Newfoundland and Labrador T'Railway Provincial Park, north 39°58'04" east 33.497 metres to a survey marker;

Then running by the southwest limit of the reserve 10 metres wide along 7A Brook, north 47°45'13" west 10.386 metres to a survey marker;

Then running by land formerly owned by Adam Goodfellow under L S 14A, now Ralph Collier, south 39°48'01" west 29.558 metres to a survey marker;

Then running by the northeast limit of Colliers Drive, south 27°06'36" east 11.174 metres more or less to the point of beginning.

Containing an area of 326 square metres more or less.

Subject to a utility easement 2.7 metres wide which crosses the lot.

All bearings refer to 3° Grid North, NAD 1983 as referred to the Transverse Mercator Projection for Newfoundland and Labrador with the central meridian at 58°30' west longitude.

2. Parcel 2: Tipping Drive at Eastern Brook, Humber Valley

All that piece or parcel of land lying northwest of Tipping Drive and southeast of Deer Lake, at Eastern Brook, in the Electoral District of Humber Valley, being further bounded and described as follows, that is to say:

Beginning at a point, that point being the northerly angle of this described parcel of land and having coordinates of north 5,434,634.182 and east 372,335.151;

Running then from the above described point of beginning by land granted by the Crown to Percy George Tipping and registered under Vol. 108 and Fol. 472, south 25°46'05" west 61.652 metres;

Then running by the Newfoundland and Labrador T'Railway Provincial Park, south 74°34'32" east 9.186 metres to a point on the northwest limit of Tipping Drive, then running by the northwest limit of Tipping Drive, in a generally clockwise direction, along a curve of radius 660.74 metres, to a point being distant 60.887 metres, as measured on a bearing of north 26°47'15" east from the last mentioned point;

Then running by the Newfoundland and Labrador T'Railway Provincial Park, north 69°10'14" west 10.157 metres, more or less to the point of beginning.

Containing in all an area of 558 square metres, more or less.

Subject to a utility easement which extends into the lot.

All bearings refer to 3° Grid North, NAD 1983 as referred to the Transverse Mercator Projection for Newfoundland and Labrador with the Central Meridian at 58°30' west longitude.

©Earl G. Tucker, Queen's Printer

Index

PART I

Corporations Act – Notices	342
Embalmers and Funeral Directors Act – Notices	348
Highway Traffic Act – Notice	353
Lands Act – Notices	361
Navigable Waters Protection Act – Notices	362
Quieting of Titles Act – Notice	363
Trustee Act – Notices	366
Urban and Rural Planning Act – Notice	361
Winding-Up and Restructuring Act – Notice	341

PART II

CONTINUING INDEX OF SUBORDINATE LEGISLATION

Title of Act and Subordinate Legislation made thereunder	CNLR or NL Reg.	Amendment	NL Gazette Date & Page No.
Income Tax Act, 2000			
Seniors' Benefit Regulations, 2007 (Amdt.)	NLR 87/10	Amends NLR 119/07 Ss.3 & 4 Amdt.	Sept. 24/10 p.627
Pedestrian Trails Liability Protection Act			
Pedestrian Trails Designation Regulations (Amdt.)	NLR 86/10	Amends NLR 44/10 S.2 R&S	Sept 24/10 p.625
Provincial Parks Act			
Newfoundland and Labrador T'Railway Provincial Park Proclamation (Amdt.)	NLR 89/10	Amends NLR 93/97 Sch. Amdt.	Sept 24/10 p.633
Water Resources Act			
Notice of Protected Water Supply Area of Southeast Pond, WS-S-0428	NLR 88/10	R & S NLR 27/03	Sept 24/10 p.629

The Newfoundland and Labrador Gazette is published from the office of Earl G. Tucker, Queen's Printer.

Copy for publication must be received before **Friday, 4:30 p.m.**, seven days before publication, to ensure inclusion in next issue.

Advertisements should be typewritten or printed legibly, separate from covering letter. Number of insertions required must be stated and the names of all signing officers typewritten or printed.

Copy may be mailed to the address below, faxed to (709) 729-1900 or emailed to queensprinter@gov.nl.ca.

Advertising rates are available upon request. Subscription rate for *The Newfoundland and Labrador Gazette* is \$125.00 for 52 weeks plus applicable tax (\$131.25). Weekly issues of \$3.00 per copy, plus tax payable in advance.

All cheques, money orders, etc., should be made payable to THE NEWFOUNDLAND EXCHEQUER ACCOUNT and all correspondence should be addressed to: Office of the Queen's Printer, P. O. Box 8700, Ground Floor, East Block, Confederation Building, St. John's, NL A1B 4J6. Telephone (709) 729-3649. Fax: (709) 729-1900.

Web Site: <http://www.gs.gov.nl.ca/printer/index.html>

**Place your order by contacting:
Office of The Queen's Printer
Confederation Building, East Block
St. John's, NL A1B 4J6
Telephone: (709) 729-3649 Fax: (709) 729-1900
email: queensprinter@gov.nl.ca**

**Government Information Product
Publication Rate Mail
G.S.T. # R107442683**

All requests for Subscription and Legislation MUST be prepaid.