



# THE NEWFOUNDLAND AND LABRADOR GAZETTE

## PART I

### PUBLISHED BY AUTHORITY

Vol. 86		ST. JOHN'S, FRIDAY, FEBRUARY 18, 2011			No. 7
		<b>CORPORATIONS ACT</b>	2010-12-03	63782	63782 NEWFOUNDLAND AND LABRADOR LIMITED
		<i>Corporations Act</i> - Section 393	2010-12-03	63783	63783 NEWFOUNDLAND AND LABRADOR INC.
		Local Incorporations	2010-12-03	63792	63792 NEWFOUNDLAND & LABRADOR INC.
		For the Month of: December 2010	2010-12-03	63781	EDUCATE U HOME INSPECTIONS LTD.
<b>Date</b>	<b>Number</b>	<b>Company Name</b>	2010-12-03	63784	ISLAND KICKS INTERNATIONAL INC.
2010-12-01	63765	63765 NEWFOUNDLAND AND LABRADOR LTD.	2010-12-03	63779	SAFE WORK SOLUTIONS LTD.
2010-12-01	63755	63755 NEWFOUNDLAND & LABRADOR LTD.	2010-12-03	63774	PR Moss Electrical Incorporated
2010-12-01	63761	BURLINGTON SEASON 1 INC.	2010-12-06	63797	63797 NEWFOUNDLAND AND LABRADOR LIMITED
2010-12-01	63762	Aurora Property Management Ltd.	2010-12-06	63794	DR. HARRY SIMMS PROFESSIONAL DENTAL CORPORATION
2010-12-01	63763	Northern Mortgage Brokers Ltd.	2010-12-06	63795	GIG HOLDINGS LIMITED
2010-12-01	63764	Rock Solid Goaltending Inc.	2010-12-06	63798	PARISH OF ST. STEPHEN THE MARTYR CORP.
2010-12-02	63775	63775 NEWFOUNDLAND AND LABRADOR INC.	2010-12-06	63796	RENOVATION FINISH & DETAIL INC.
2010-12-02	63772	ENHANCED CONTRACTING INC	2010-12-06	63793	Hampden Ambulance Service Incorporated
2010-12-02	63773	ENHANCED FORMING INC.	2010-12-07	63807	GRABBER SERVICES LTD
2010-12-02	63768	63768 NEWFOUNDLAND & LABRADOR INCORPORATED	2010-12-07	63809	ICE 2010 HOLDING LTD.
2010-12-02	63769	Jagger Contracting Inc.	2010-12-07	63808	STEVE'S PLASTERING & PAINTING LTD.
2010-12-02	63770	Southern Shore Waste Management Inc.			
2010-12-02	63771	Trinity Bay Center Waste Management Inc.			
2010-12-03	63780	63780 NEWFOUNDLAND & LABRADOR INC.			

THE NEWFOUNDLAND AND LABRADOR GAZETTE  
February 18, 2011

2010-12-07	63800	Towers Atlantic Solutions Limited	2010-12-15	63859	KISS CAFE & BOOKSTORE INC.
2010-12-08	63811	GRANDRIDE ENTERPRISES LTD	2010-12-15	63855	POWER - HOUSE ELECTRICAL LTD.
2010-12-08	63813	SASHA V. DESIGN INC.	2010-12-15	63861	ROBERT BUCKINGHAM PLC INC.
2010-12-08	63812	SHIRLEY'S CONVENIENCE INC	2010-12-15	63867	THE COISH ENTERPRISES LIMITED
2010-12-08	63810	Streamline Contracting Ltd	2010-12-16	63862	63862 NEWFOUNDLAND & LABRADOR INC.
2010-12-09	63822	63822 NEWFOUNDLAND AND LABRADOR LIMITED	2010-12-16	63863	Shear Cuts Limited
2010-12-09	63821	DAVENPORT HOLDINGS LTD.	2010-12-16	63868	63868 NEWFOUNDLAND AND LABRADOR INC.
2010-12-09	63823	ISLAND MONUMENTS INC.	2010-12-16	63869	63869 NEWFOUNDLAND AND LABRADOR INC.
2010-12-09	63820	JATT ENTERPRISES INC.	2010-12-17	63895	63895 NEWFOUNDLAND AND LABRADOR LIMITED
2010-12-09	63819	N&B HOLDINGS INC.	2010-12-17	63896	ATLANTIC AVIATION INC.
2010-12-09	63817	TBG HOLDINGS INC.	2010-12-17	63876	BEV VEY ENTERPRISES LIMITED
2010-12-09	63814	Horticultural Optimal Plantscape Environmental Project Inc.	2010-12-17	63879	CASE HOLDINGS LIMITED
2010-12-09	63815	Labrador Hunting and Fishing Association Inc.	2010-12-17	63880	CASE INVESTMENTS LIMITED
2010-12-10	63826	63826 NEWFOUNDLAND & LABRADOR LTD.	2010-12-17	63882	DW HOLDINGS LIMITED
2010-12-10	63833	63833 NEWFOUNDLAND & LABRADOR LIMITED	2010-12-17	63881	JEAN V. DAWE
2010-12-10	63825	APPRAISAL SERVICES (2010) LTD.	2010-12-17	63884	PROFESSIONAL LAW CORPORATION
2010-12-10	63827	G.S. HUNT ENTERPRISES LTD.	2010-12-17	63877	KBW HOLDINGS LIMITED
2010-12-10	63816	Best Boy Studios Inc.	2010-12-17	63878	MAYBEE HOLDINGS LIMITED
2010-12-13	63842	BACAB WOOD PRODUCTS LTD.	2010-12-17	63891	MAYBEE INVESTMENTS LIMITED
2010-12-13	63837	BRADBURY CONTRACTING LTD.	2010-12-17	63888	SALON 1 (2010) INC.
2010-12-13	63843	BRISTOL'S HOPE HISTORICAL SOCIETY - 2010 - INC	2010-12-17	63886	SAMSON HOLDINGS LIMITED
2010-12-13	63841	COUNTRYSIDE INVESTMENTS LIMITED	2010-12-17	63889	SAMSON INVESTMENTS LIMITED
2010-12-13	63839	ETMJ HOLDINGS LIMITED	2010-12-17	63873	SIMMONS HOLDINGS LIMITED
2010-12-13	63830	63830 NEWFOUNDLAND & LABRADOR LIMITED	2010-12-17	63874	SIMMONS INVESTMENTS LIMITED
2010-12-13	63831	D. Richard Robbins Professional Law Corporation	2010-12-20	63903	D. Richard Robbins Legal Services PLC Inc.
2010-12-13	63832	M & L CONTRACTING INC	2010-12-20	63899	I & L Enterprise Incorporated
2010-12-13	63834	63834 NEWFOUNDLAND & LABRADOR INC.	2010-12-20	63900	63903 NEWFOUNDLAND & LABRADOR INC.
2010-12-13	63835	63835 NEWFOUNDLAND & LABRADOR INC.	2010-12-20	63902	ECP HOLDINGS INC.
2010-12-13	63836	63836 NEWFOUNDLAND & LABRADOR INC.	2010-12-20	63892	POSIE ROW HOLDINGS INC.
2010-12-14	63850	FIX-IT SERVICES LTD	2010-12-20	63894	TIFFANY ROSE NURSERY AND GIFT SHOP INC.
2010-12-14	63849	H & C REAL ESTATE LTD.	2010-12-21	63913	Kid's Tree Inc.
2010-12-14	63851	KELBROOK CONTRACTING INC.	2010-12-21	63914	63894 NEWFOUNDLAND AND LABRADOR INC.
2010-12-14	63848	S & E FELIX ENTERPRISE LIMITED	2010-12-21	63923	63913 NEWFOUNDLAND & LABRADOR LTD.
2010-12-14	63852	SPIRIT OF DUNFIELD CORPORATION	2010-12-21	63926	63914 NEWFOUNDLAND AND LABRADOR INC.
2010-12-14	63844	JSL Enterprises Limited	2010-12-21	63918	BLUE WAX HOLDINGS LIMITED
2010-12-14	63845	Wellness For You Inc.	2010-12-21	63912	DAVID GOODLAND LEGAL SERVICES PLC INC.
2010-12-14	63846	Recipe for Health Inc.	2010-12-21	63919	DAVID GOODLAND PARTNERSHIP PLC INC.
2010-12-14	63847	63847 NEWFOUNDLAND & LABRADOR INC.	2010-12-21	63920	DR. JABEZ M. NORMAN PROFESSIONAL MEDICAL CORPORATION
2010-12-15	63856	63856 NEWFOUNDLAND AND LABRADOR LTD.	2010-12-21		PETER O'FLAHERTY LEGAL SERVICES PLC INC.
2010-12-15	63857	63857 NEWFOUNDLAND AND LABRADOR INC.	2010-12-21		PETER O'FLAHERTY PARTNERSHIP PLC INC.
2010-12-15	63860	63860 NEWFOUNDLAND AND LABRADOR INC.			
2010-12-15	63854	JR'S AUTO SALES LTD			

THE NEWFOUNDLAND AND LABRADOR GAZETTE  
February 18, 2011

2010-12-21	63917	PHILIP BUCKINGHAM PARTNERSHIP PLC INC.	2010-12-23	63953	AJS HOLDINGS INC.
2010-12-21	63916	PJB LEGAL SERVICES PLC INC.	2010-12-23	63954	Wing-N-It Inc.
2010-12-21	63925	T AND J BRINSTON ENTERPRISES LIMITED	2010-12-23	63955	ISLAND VIEW GUEST HOME INC.
2010-12-21	63897	Paradise Bowl Inc.	2010-12-24	63972	63972 NEWFOUNDLAND AND LABRADOR LIMITED
2010-12-21	63898	Pishumuss Welding & Fabricators Ltd.	2010-12-24	63973	P & P (KAN-DOO) SERVICES INC.
2010-12-21	63901	SPARK ELECTRIC LTD.	2010-12-29	63983	63983 NEWFOUNDLAND & LABRADOR INC
2010-12-21	63907	63907 NEWFOUNDLAND & LABRADOR INC.	2010-12-29	63982	BOLAND'S AUTO LTD.
2010-12-21	63908	63908 NEWFOUNDLAND & LABRADOR INC.	2010-12-29	63967	DR. BRYAN SHAWN WOOLRIDGE PROFESSIONAL MEDICAL CORPORATION
2010-12-22	63934	63934 NEWFOUNDLAND AND LABRADOR LIMITED	2010-12-29	63968	DR. CARMEL CASEY PROFESSIONAL MEDICAL CORPORATION
2010-12-22	63940	63940 NEWFOUNDLAND AND LABRADOR INC.	2010-12-29	63966	DR. ERIN EFFORD PROFESSIONAL MEDICAL CORPORATION
2010-12-22	63933	ABE CONTRACTING LTD.	2010-12-29	63965	DR. MARY M. DALY PROFESSIONAL MEDICAL CORPORATION
2010-12-22	63941	COMMUNITY YOUTH NETWORK - ISLES OF NOTRE DAME CORP.	2010-12-29	63980	K & T CONCRETE WORKS LIMITED
2010-12-22	63936	DR. MICHAEL GRABKA PROFESSIONAL DENTAL CORPORATION	2010-12-29	63981	RONO CONSTRUCTION INC.
2010-12-22	63942	DR. MICHAEL HALL P.M.C. INC.	2010-12-29	63978	SMNJ ENTERPRISES LIMITED
2010-12-22	63937	DR. SNEHA ABHYANKAR PROFESSIONAL DENTAL CORPORATION	2010-12-29	63979	THE GREATER LAMALINE AREA MULTI-PURPOSE TRAIL ASSOCIATION INC.
2010-12-22	63939	LAWRENCE POND SALON OASIS INC.	2010-12-29	63971	Dr. Jennifer Mercer, Professional Medical Corporation
2010-12-22	63938	NORTHERN PENINSULA BIG GAME OUTFITTERS INC.	2010-12-29	63974	63974 NEWFOUNDLAND & LABRADOR INC.
2010-12-22	63909	63909 NEWFOUNDLAND & LABRADOR INC.	2010-12-29	63975	63975 NEWFOUNDLAND & LABRADOR INC.
2010-12-22	63921	VIKING LODGE LTD.	2010-12-30	63990	ROWE INVESTMENTS INC.
2010-12-22	63927	63927 NEWFOUNDLAND AND LABRADOR LIMITED	2010-12-30	63976	Independent Consultants Group Limited
2010-12-22	63928	Hackett's Construction Inc.	2010-12-30	63977	Core Holdings Ltd.
2010-12-22	63929	ENECON Atlantic Canada INC	2010-12-30	63984	63984 NEWFOUNDLAND & LABRADOR LIMITED
2010-12-22	63930	Nucan Plumbing & Welding Inc.	2010-12-30	63985	Yelow Entertainment Incorporated
2010-12-22	63931	Darren Williams Investments Limited	2010-12-30	63986	63986 NEWFOUNDLAND & LABRADOR INC.
2010-12-22	63932	Darold Williams Investments Limited	2010-12-30	63987	RMD Holdings Ltd.
2010-12-23	63957	63957 NEWFOUNDLAND AND LABRADOR LIMITED	2010-12-31	63991	FILCAN SERVICES LTD.
2010-12-23	63956	ENGLISH HILL ENTERPRISE LIMITED	Total Incorporations: 177		
2010-12-23	63963	MICHAEL H. DUFFY PLC INC.			
2010-12-23	63964	MIDNIGHT ROOFING & EQUIPMENT RENTALS INC.			
2010-12-23	63962	NEW-FOUND-BAND MUSIC STORE LTD.			
2010-12-23	63943	F. Stagg Investments Limited			
2010-12-23	63944	F. Stagg Holdings Limited			
2010-12-23	63945	D. Hiscock Investments Limited			
2010-12-23	63946	D. Hiscock Holdings Limited			
2010-12-23	63947	H.S. Real Estate Holdings Limited			
2010-12-23	63948	Darold Williams Holdings Limited			
2010-12-23	63949	Darren Williams Holdings Limited			
2010-12-23	63950	Kelrock Holdings Inc.			
2010-12-23	63951	Northern Crewing Agency Inc.			
2010-12-23	63952	63952 NEWFOUNDLAND & LABRADOR INC.			
			<b>Date</b>	<b>Number</b>	<b>Company Name</b>
			2010-12-03	45575	NCE Investments Inc.
			2010-12-06	18007	A W Peterson and Associates Limited
			2010-12-09	49408	Lili Consulting Inc.
			2010-12-15	7875	Lions Club of Carbonear
			2010-12-23	50752	DOR ENTERPRISES LIMITED
			Total Revivals: 5		

*Corporations Act - Section 331*  
Local Revivals  
For the Month of: December 2010

THE NEWFOUNDLAND AND LABRADOR GAZETTE  
February 18, 2011

<i>Corporations Act - Section 296 and 393</i>			2010-12-15	50427	GREEN APPLE PROPERTIES LTD.
Local Continuances					
For the Month of: December 2010			2010-12-15	50455	JOE RICHE INVESTMENTS LTD.
<b>Date</b>	<b>Number</b>	<b>Company Name</b>	2010-12-15	48111	METROPOLITAN UNITED FOOTBALL CLUB CORP.
2010-12-21	63911	BIG ERIC'S RESTAURANT SUPPLIES LIMITED	2010-12-15	4007	Newfoundland - Labrador Golf Association
2010-12-21	63910	SANI PRO ATLANTIC INC.	2010-12-15	3745	O'NEILL'S GARDENLAND LTD.
Total Continuances: 2			2010-12-16	57565	57565 NEWFOUNDLAND AND LABRADOR INC.
<i>Corporations Act - Section 286</i>					
Local Amendments			2010-12-16	62516	D&T RENOVATIONS & FOUNDATIONS INC.
For the Month of: December 2010			2010-12-16	13553	TED CHAULK ELECTRICAL LIMITED
<b>Date</b>	<b>Number</b>	<b>Company Name</b>	2010-12-17	51178	KICKBOXING NEWFOUNDLAND & LABRADOR INC.
2010-12-01	34685	Donovan Homes Limited			
2010-12-01	19853	HOME FOR HOMES INC.			
2010-12-01	61007	PIKE AND ASSOCIATES			
		ADJUSTING LTD.	2010-12-17	31117	LCR PLUS LIMITED
2010-12-02	63525	C & A HELICOPTER SERVICES INC.	2010-12-17	48120	Shagg Island Enterprises Ltd.
		O'DEA DENTAL CLINIC INC.	2010-12-17	32854	WELLON RESOURCES LTD.
2010-12-02	50706		2010-12-20	44407	10990 NEWFOUNDLAND INC.
2010-12-02	8233	Southern Labrador Development Association	2010-12-20	45861	11109 Newfoundland Inc.
			2010-12-20	9700	11336 NEWFOUNDLAND INC.
2010-12-02	46012	Steers Limited	2010-12-20	60144	60144 NEWFOUNDLAND & LABRADOR INC.
2010-12-02	35646	Torgait Services Inc.			
2010-12-03	25862	HOWSE HOLDINGS LIMITED	2010-12-20	61468	61468 NEWFOUNDLAND & LABRADOR INC.
2010-12-03	3053	HOWSE OF FLOWERS LIMITED	2010-12-20	42875	ASAN Bay Inc.
2010-12-03	45575	NCE Investments Inc.	2010-12-20	46246	Beothuk Helicopters Inc.
2010-12-03	63778	PD GROUP LTD.	2010-12-20	42653	CDP Holdings Limited
2010-12-06	52024	52024 NEWFOUNDLAND AND LABRADOR LIMITED	2010-12-20	37855	Central Recreational Supplies Ltd.
2010-12-06	54183	54183 NEWFOUNDLAND AND LABRADOR LIMITED	2010-12-20	49847	DR. SUNMOLU BECKLEY PROFESSIONAL MEDICAL CORPORATION
2010-12-06	55892	55892 NEWFOUNDLAND & LABRADOR LIMITED	2010-12-20	55819	EAST COAST EMERGENCY RESPONSE SERVICES LTD.
2010-12-06	18777	ALVA LIMITED			
2010-12-06	54938	ANCHORAGE CONTRACTING LTD.	2010-12-20	11510	Hibernian Motors Limited
			2010-12-20	37728	Kenmount Motors Inc.
2010-12-06	42305	SAG HOLDINGS LTD.	2010-12-20	56044	NEWFOUNDLAND ATHLETIC DOG ASSOCIATION, INC.
2010-12-07	24978	CENTRAL ASSOCIATES LIMITED	2010-12-20	40958	Noble Denton Canada Limited
2010-12-07	35050	PHB Group Inc.	2010-12-20	30814	P.B.A. INDUSTRIAL SUPPLIES LIMITED
2010-12-08	45523	D.L.B. HOLDINGS INC.			
2010-12-08	62949	FROST HEAVE SOLUTIONS LTD	2010-12-20	42664	SHARRON HOLDINGS INC.
			2010-12-20	10819	Simmons Auto Sales & Services Limited
2010-12-08	63233	SISBRO ENTERPRISES INC.			
2010-12-09	18080	Urban Flooring Contractors Limited	2010-12-20	54282	SUPERCARS INC.
			2010-12-20	34989	WHITE BAY HOLDINGS LTD.
2010-12-09	46914	Urban Properties Inc.	2010-12-20	4574	YATES & WOODS LIMITED
2010-12-13	63795	GIG HOLDINGS LIMITED	2010-12-21	16441	BEATON SHEPPARD ASSOCIATES LIMITED
2010-12-13	49187	LEAPING SILVER INC			
2010-12-13	49100	Oilfield Drilling Services Inc.	2010-12-21	53735	D.J. BROADERS CONSULTING INC.
2010-12-13	63726	SWEETAPPLE HOLDINGS LIMITED	2010-12-21	56032	DR. RANDELL SMITH PROFESSIONAL MEDICAL CORPORATION
2010-12-14	29143	CAMRAY HOLDINGS LTD			
2010-12-14	26881	Magic Foods Ltd.			
2010-12-14	55051	Nathan Holdings Limited	2010-12-21	39335	FARRELL'S HOLDINGS LIMITED
2010-12-14	55050	Raft Holdings Limited			
2010-12-14	11651	SWEETAPPLE ACCOUNTING GROUP LTD.	2010-12-21	61171	LCD Consulting Inc.
			2010-12-21	63861	ROBERT BUCKINGHAM PLC INC.
2010-12-15	43956	Community Veterinary Hospital Inc.	2010-12-21	37716	SHEPPARD CASE ARCHITECTS INC.
2010-12-15	63839	ETMJ HOLDINGS LIMITED	2010-12-22	36758	Smith's Ambulance Service Limited
			2010-12-22	57465	TRIPLE A INVESTMENTS LTD.

THE NEWFOUNDLAND AND LABRADOR GAZETTE  
February 18, 2011

2010-12-22	61060	Triple A Realty Limited	2010-12-09	59072	LAZY DOG COFFEE AND BEVERAGE COMPANY INC.
2010-12-22	61899	Woodward Motors (Port aux Basques) Limited	2010-12-10	53617	EXTREME RDP ENTERPRISES LTD.
2010-12-23	55082	CRANE PROPERTIES INC.	2010-12-10	53133	P.G.T. ENTERPRISES LTD.
2010-12-23	36236	D.C.L. HOLDINGS LIMITED	2010-12-13	63418	A.C.J. RENOVATIONS INC.
2010-12-23	20717	K. A. P. Welding Limited	2010-12-13	48962	Bussey's Fishing Enterprise Ltd.
2010-12-23	48418	Kendall Engineering Ltd.	2010-12-13	45661	Forest Hill Apartments Ltd.
2010-12-23	55226	M&L FISHERIES LTD.	2010-12-13	56968	Independent Catch Monitoring Inc.
2010-12-23	45545	MICHAELS RIVER FISHING LODGE INC.	2010-12-13	46491	NEWFOUNDLAND & LABRADOR ASSOCIATION OF COMMUNITY CENTRES INC.
2010-12-23	32447	R. M. & S. Company Limited	2010-12-13	56964	THE CAR FARM CANADA INC.
2010-12-23	11049	SHEMETCO LIMITED	2010-12-16	57549	MOUNT SCIO GEOCONSULTANTS INC.
2010-12-23	57664	Vanguard Consulting Inc.	2010-12-17	2055	CORNER BROOK FOUNDRY AND MACHINE COMPANY LIMITED
2010-12-24	32313	ERCO DEVELOPMENTS INC.	2010-12-17	41745	Linco Medical Research Inc.
2010-12-24	46153	ERCO HOMES INC.	2010-12-17	44231	Transport Limited
2010-12-24	2738	J.M. DELANEY LUMBER LIMITED	2010-12-17	50916	TRAVEL BROKER INC
2010-12-29	23740	Delaney Holdings Limited	2010-12-20	51686	Bamboo Garden Inc.
2010-12-29	49844	HUMBER VALLEY POTATO COMPANY INC.	2010-12-20	29383	CARMA HOLDINGS LIMITED
2010-12-29	37504	Metro Heating & Air Conditioning Ltd	2010-12-20	62638	DJ5 HOLDINGS INC.
2010-12-29	60642	SOUTHERN SUDANESE-CANADIAN ASSOCIATION INC.	2010-12-20	6357	DON FAGAN LIMITED
2010-12-29	28620	SSK HOLDINGS LIMITED	2010-12-20	60406	DW CONCRETE AND TILE SPECIALTIES LTD
2010-12-30	45805	11103 Newfoundland Limited	2010-12-20	57655	ISLAND UNIFORMS & APPAREL LTD.
2010-12-30	47150	11237 Newfoundland Inc.	2010-12-23	56582	North Atlantic Seafood Auctions Inc
2010-12-30	27708	27708 NEWFOUNDLAND & LABRADOR LTD.	2010-12-29	22476	KENMOUNT TRUCKING LIMITED
2010-12-30	53016	53016 NEWFOUNDLAND AND LABRADOR LIMITED	2010-12-30	44310	10977 Newfoundland Inc.
2010-12-30	59548	59548 NEWFOUNDLAND & LABRADOR INC.	2010-12-30	37957	BRIAN O'TOOLE GENERAL CONTRACTING LTD.
2010-12-30	36438	AGT ENTERPRISES LTD.	2010-12-30	49611	Green Belt Enterprises Ltd
2010-12-30	63825	APPRAISAL SERVICES (2010) LTD.	2010-12-31	40469	ST. LAWRENCE MINERAL PRODUCTS INC.
2010-12-30	50666	DE BOHN HOLDINGS CORPORATION	Total Dissolutions: 35		
2010-12-30	30508	HANDYMAN HARDWARE LTD.			
2010-12-30	42570	ROWECO MANAGEMENT INC			
2010-12-31	48505	P.S. ATLANTIC LIMITED			

Total Amendments: 108

*Corporations Act* - Section 335  
Local Dissolutions  
For the Month of: December 2010

Date	Number	Company Name
2010-12-01	23739	GLOVERTOWN LITERARY CREATIONS INC.
2010-12-01	56712	JBS SERVICES INC.
2010-12-01	56312	O'REILLY'S WELDING SERVICES INC.
2010-12-01	53965	PAPA JACK'S DINER INC.
2010-12-01	43396	VP Ventures Inc.
2010-12-02	17558	Hair By Patricia - Unisex Limited
2010-12-02	40983	NOTRE DAME SNOWMOBILE ASSOCIATION INC.
2010-12-07	25926	R.M.S. ENTERPRISES LIMITED
2010-12-09	34570	BROAD COVE SPECIALTIES LTD.

*Corporations Act* - Section 294  
Local Amalgamations  
For the Month of: December 2010

Date	Number	Company Name
2010-12-01	63767	GORDON SILVER REAL ESTATE LIMITED
From:	63708	Chrisdon Apartments Limited
	2571	GORDON SILVER REAL ESTATE LIMITED
	2572	
2010-12-01	63778	PD GROUP LTD.
From:	53090	53090 NEWFOUNDLAND AND LABRADOR INC.
	60853	PD GROUP LTD.
2010-12-14	63853	PENNEY GROUP INC.
From:	47767	PENNEY GROUP INC.
	44094	SJD HOLDINGS LTD.
2010-12-15	63858	BRH ENTERPRISES LIMITED
From:	63336	BRH ENTERPRISES LIMITED
	29036	RAY BUTT 1991 LIMITED
2010-12-31	63993	BIG ERICS INC.

THE NEWFOUNDLAND AND LABRADOR GAZETTE  
February 18, 2011

From:	63911	BIG ERIC'S RESTAURANT SUPPLIES LIMITED	2010-12-16	From:	TRIPLE VEE'S RENOVATIONS LTD.
	63910	SANI PRO ATLANTIC INC.		51178	KICKBOXING
	44226	Sani Pro Inc.			NEWFOUNDLAND & LABRADOR INC.
2010-12-31	64039	COLLINS' AMBULANCE SERVICE LTD.	2010-12-17	From:	NEWFOUNDLAND AND LABRADOR COUNCIL OF AMATEUR SPORT
From:	43963	10941 Newfoundland Inc.			KICKBOXING INC.
	31521	Collins' Ambulance Service Ltd.		60642	SOUTHERN SUDANESE- CANADIAN ASSOCIATION INC.
2010-12-31	63992	DE BOHN HOLDINGS CORPORATION		From:	SUDANESE-CANADIAN INTEGRATION ORGANIZATION INC.
From:	50666	DE BOHN HOLDINGS CORPORATION	2010-12-29		
	58523	NEWFOUNDLAND BLUEBERRY FARMS CORP.		59548	59548 NEWFOUNDLAND & LABRADOR INC.
2010-12-31	63998	EMPIRE HOLDINGS INC.		From:	59548 NEWFOUNDLAND & LABRADOR INC.
From:	63652	63652 NEWFOUNDLAND & LABRADOR INC.	2010-12-30		
	46543	Empire Holdings Inc.		63825	APPRAISAL SERVICES (2010) LTD.
2010-12-31	63994	INFINI-T HOLDINGS INC.		From:	63825 NEWFOUNDLAND AND LABRADOR LTD.
From:	58242	58242 NEWFOUNDLAND & LABRADOR LTD.	2010-12-30		
	55255	INFINI-T HOLDINGS INC.			
2010-12-31	63995	JRBR HOLDINGS LTD.		Total Name Changes: 7	
From:	42562	CHEROB DEVELOPMENTS LTD.		<i>Corporations Act - Section 443</i>	
	46907	JRBR HOLDINGS LTD.		Extra-Provincial Registrations	
2010-12-31	63997	MIBAR HOLDINGS LTD.		For the Month of: December 2010	
From:	32058	MiBar Holdings Ltd.	<b>Date</b>	<b>Number</b>	<b>Company Name</b>
	37843	T. & T. Cycles Limited	2010-12-01	63766	CITIGROUP GLOBAL MARKETS CANADA INC.
2010-12-31	63999	MILA FOODS INC.	2010-12-02	63776	BIG ROCK BREWERY INC.
From:	39890	C & M FOODS INC.	2010-12-02	63777	HANBY BUSINESS SOLUTIONS INC.
	34288	Mila Foods Inc.	2010-12-03	63785	COOKE AQUACULTURE INC.
2010-12-31	63996	NORTH ATLANTIC SHIP BROKERS LTD.	2010-12-03	63787	G M G FISH SERVICES LTD.
From:	57200	NORTH ATLANTIC SHIP BROKERS LTD.	2010-12-03	63790	P & T WALKER CAPITAL LTD.
	62541	OFFSHORE WORLD LTD.	2010-12-03	63786	RCAP LEASING INC.
			2010-12-03	63789	CRÉDIT-BAIL RCAP INC.
			2010-12-03	63788	SELECT FIRST FINANCIAL SERVICES INC.
			2010-12-03	63788	TETRA TECH CANADA CONSTRUCTION INC.
			2010-12-06	63799	GLOBAL MAXFIN CAPITAL INC.
			2010-12-06	63801	TEKNION LIMITED
			2010-12-07	63806	GLOBAL HUNTER SECURITIES, LLC
			2010-12-07	63803	INSURANCE INSIGHT INC.
			2010-12-07	63804	LONDON OFFSHORE CONSULTANTS (CANADA) LIMITED
			2010-12-07	63802	SANIS HEALTH INC.
			2010-12-07	63805	VIIV HEALTHCARE ULC
			2010-12-10	63829	VIIV, SOINS DE SANTE ULC
			2010-12-13	63840	DEHARVENG JUBILEE FOUNDATION INC.
			2010-12-13	63838	ANDOVER INSURANCE AGENCY INC.
			2010-12-15	63865	OUTSOURCING ARCHITECTS CANADA INC.
			2010-12-15	63864	7261489 CANADA INC.
					BPR-BECHTEL INC.

Total Amalgamations: 13

*Corporations Act - Section 286*  
Local Name Changes  
For the Month of: December 2010

<b>Number</b>		<b>Company Name</b>
52024		52024 NEWFOUNDLAND AND LABRADOR LIMITED
2010-12-06	From:	DR. FATHI A. GADHAFI PROFESSIONAL MEDICAL CORPORATION
63233		SISBRO ENTERPRISES INC.
2010-12-08	From:	SISBRO ENTERPRIZES INC.
	62516	D&T RENOVATIONS & FOUNDATIONS INC.

THE NEWFOUNDLAND AND LABRADOR GAZETTE  
February 18, 2011

2010-12-16	63871	ATKINS CONSULTING CANADA LIMITED	63904	DUNDEE SECURITIES LTD./VALEURS MOBILIERES DUNDEE LTÉE
2010-12-16	63872	DRAGON LANCE MANAGEMENT CORPORATION	2010-12-21	From: DUNDEE SECURITIES LTD.
2010-12-16	63870	EAGLERIDGE INTERNATIONAL LIMITED		
2010-12-17	63887	FLYNN EQUIPMENT RENTALS LTD.	Total Name Changes: 6	
2010-12-17	63893	HARRIS AND ROOME LIMITED	<i>Corporations Act - Section 294</i>	
2010-12-17	63883	PERAC INDUSTRIES LIMITED	Extra-Provincial Registrations for Amalgamation	
2010-12-17	63885	TEN STAR INSURANCE BROKERS INC.	For the Month of: December 2010	
2010-12-20	63904	DUNDEE SECURITIES LTD./VALEURS MOBILIERES DUNDEE LTÉE	<b>Date</b>	<b>Number</b> <b>Company Name</b>
			2010-12-03	63791 ACNIELSEN COMPANY OF CANADA
2010-12-21	63922	DWS DATA WIRING SOLUTIONS INC.	From:	58380 ACNIELSEN COMPANY OF CANADA
2010-12-21	63924	ROSEDALE HOMES LTD.	2010-12-09	63818 CSI GLOBAL EDUCATION INC.
2010-12-21	63915	VIVINT CANADA, INC.	From:	63274 CSI GLOBAL EDUCATION INC.
2010-12-23	63960	FAGIOLI NEWFOUNDLAND LTD.		
2010-12-23	63958	GLOBAL MECHANIC MEDIA INC.	2010-12-09	63824 CSI GLOBAL EDUCATION INC.
2010-12-23	63969	PETER MIELZYNSKI AGENCIES LIMITED	From:	63818 CSI GLOBAL EDUCATION INC.
2010-12-23	63961	RICHARDSON RFPD CANADA INC.	2010-12-10	63828 FERMEUSE WIND POWER CORP.
2010-12-23	63959	WILLERT CANADA INC.	From:	58159 FERMEUSE WIND POWER CORP.
2010-12-24	63970	THE CANADIAN EQUITY GROUP INC.		
2010-12-30	63988	ITW CANADA INC.	2010-12-15	63866 HAZMASTERS INC.
2010-12-30	63989	WALTON CAPITAL MANAGEMENT INC.	From:	6269F HAZMASTERS ENVIRONMENTAL EQUIPMENT INC.
Total Registrations: 40				
		<i>Corporations Act - Section 451</i>	2010-12-16	63875 CMC ELECTRONICS INC.
		Extra-Provincial Name Changes	From:	56302 CMC ÉLECTRONIQUE INC.
		For the Month of: December 2010		CMC ELECTRONICS INC./ CMC ÉLECTRONIQUE INC.
<b>Number</b>		<b>Company Name</b>		
61268		PPI SOLUTIONS (BC) INC.	2010-12-20	63906 BP CANADA ENERGY COMPANY
2010-12-06	From:	FINANCIAL MANAGEMENT (BC) INC.	From:	6642F BP CANADA ENERGY COMPANY
54698		I3 ADVISORS INC.		
2010-12-10	From:	I3 ADVISORS INC. INFORMATION, INNOVATION AND INDEPENDENCE	2010-12-20	63905 WORLEYPARSONS CANADA SERVICES LTD.
			From:	60509 WORLEYPARSONS CANADA SERVICES LTD.
63629		MEDWELL SECURITIES INC.	2010-12-22	63935 LJVB HOLDINGS INC.
2010-12-10	From:	FIRSTPORT CAPITAL CORP.	From:	56707 VAN HOUTTE GROUP INC.
				GROUPE VAN HOUTTE INC.
60702		ALTERA NEWFOUNDLAND TECHNOLOGY CORP.	Total Registrations for Amalgamation: 9	
2010-12-14	From:	AVALON MICROELECTRONICS INC.	DEPARTMENT OF GOVERNMENT SERVICES	
			Dean Doyle, Registrar of Companies	
63905		WORLEYPARSONS CANADA SERVICES LTD.	Feb 18	
2010-12-20	From:	WORLEYPARSONS CANADA LTD.		

## MINERAL ACT

### NOTICE

Published in accordance with section 62 of CNLR 1143/96 under the *Mineral Act*, cM-12, RSNL 1990 as amended.

Mineral rights to the following mineral lands have reverted to the Crown:

Mineral License 010298M  
Held by Noel, E. Michele  
Situates near Butlers Pond, Avalon Peninsula  
On map sheet 01N/03

Mineral License 010360M  
Held by Mega Uranium Ltd.  
Situates near West Micmac Lake  
On map sheet 13K/09E

Mineral License 011510M  
Held by Bayswater Ventures Corp.  
Situates near Kaipokok River  
On map sheet 13K/08 13K/09

Mineral License 011511M  
Held by Bayswater Ventures Corp.  
Situates near Kaipokok River  
On map sheet 13K/07 13K/08

Mineral License 015791M  
Held by Sweetapple, Ronald  
Situates near North West Pond, Eastern NL  
On map sheet 02F/04

Mineral License 016817M  
Held by Crosshair Exploration & Mining Corp(60%)/Silver Spruce Resources Inc.(40%)  
Situates near Makkovik River  
On map sheet 13J/14

Mineral License 016059M  
Held by Crosshair Exploration & Mining Corp(60%)/Silver Spruce Resources Inc.(40%)  
Situates near Pocketknife Lake  
On map sheet 13K/06

A portion of license 016703M  
Held by Chan, Lai Lai  
Situates near Baie Verte Area  
On map sheet 12H/16  
more particularly described in an application on file at Department of Natural Resources

Mineral License 013983M  
Held by Murphy, Lewis  
Situates near Great Gull Lake, Central NL  
On map sheet 12H/01

Mineral License 013997M  
Held by Hicks, Darrin  
Situates near Middle Ridge, Burin Peninsula  
On map sheet 01M/04

Mineral License 016485M  
Held by Golden Dory Resources Corp.  
Situates near Flaherty Hill, Burin Peninsula  
On map sheet 01L/13

Mineral License 014092M  
Held by Ryan, Kevin  
Situates near Britannia, Eastern NL  
On map sheet 02C/04

Mineral License 014097M  
Held by Mega Uranium Ltd.  
Situates near Byron Bay  
On map sheet 13I/12

Mineral License 017595M  
Held by Mega Uranium Ltd.  
Situates near Rocky Bay  
On map sheet 13J/16

Mineral License 014102M  
Held by Almar Consultants  
Situates near Little Rattling Brook, Central NL  
On map sheet 02D/12

Mineral License 016714M  
Held by Cooper, Gordon E.  
Situates near Black Duck Cove, Eastern NL  
On map sheet 02C/04

Mineral License 015513M  
Held by Noel, E. Michele  
Situates near Great Gull River, Central NL  
On map sheet 02D/11

Mineral License 015520M  
Held by Ryan, Kevin  
Situates near Winterland, Burin Peninsula  
On map sheet 01M/03

Mineral License 015529M  
Held by Vatcher, Matilda  
Situates near Mary March Brook, Central NL  
On map sheet 12A/16

Mineral License 016445M  
Held by Humby, Eli  
Situates near Bloody Reach, Eastern NL  
On map sheet 02C/13

Mineral License 016446M  
Held by Humby, Eli  
Situates near Bloody Reach, Eastern NL  
On map sheet 02C/13

Mineral License 016447M  
Held by Humby, Eli  
Situates near Bloody Reach Eastern NL  
On map sheet 02C/13

Mineral License 016448M  
Held by Humby, Eli  
Situates near Bloody Reach, Eastern NL  
On map sheet 02C/13

Mineral License 016593M  
Held by Duffitt, Alexander S.  
Situates near Jumpers Brook, Central NL  
On map sheet 02D/14 02E/03



THE NEWFOUNDLAND AND LABRADOR GAZETTE  
February 18, 2011

Mineral License Held by Situates near On map sheet	016598M Strong, Paul Jumpers Brook, Central NL 02D/14 02E/03
Mineral License Held by Situates near On map sheet	016607M Alterra Resources Inc. Strange Lake, West of Nain 24A/08
Mineral License Held by Situates near On map sheet	016616M Gordon, Troy Grand Lake, West - Central NL 12A/12
Mineral License Held by Situates near On map sheet	016621M Lynes, Alvin Fox Island River, Western NL 12B/16
Mineral License Held by Situates near On map sheet	016631M Turpin, Alexander J. Corbin Harbour Area, Burin Peninsula 01L/14
Mineral License Held by Situates near On map sheet	016632M Turpin, Alexander J. Little St Lawrence, Burin Peninsula 01L/14
Mineral License Held by Situates near On map sheet	016637M Fancey, Derrick Main Point, Central NL 02E/08
Mineral License Held by Situates near On map sheet	016652M Weick, R. James Peytons Pond, Avalon Peninsula 01N/07
Mineral License Held by Situates near On map sheet	016655M Ryan, Kevin Harbour Mille, Burin Peninsula 01M/10
Mineral License Held by Situates near On map sheet	016656M Stares, Robert T. Glenwood, Central NL 02E/02
Mineral License Held by Situates near On map sheet	016660M Dawson, Michael E. Andre Pond, Western NL 12B/01
Mineral License Held by Situates near On map sheet	016661M Dawson, Michael E. Andre Pond, Western NL 12B/01
Mineral License Held by Situates near On map sheet	016664M White, Derek R. Fox Island River, Western NL 12B/09 12B/10
Mineral License Held by Situates near On map sheet	016665M White, Derek R. St. Georges, Western NL 12B/08

Mineral License Held by Situates near On map sheet	016667M Paragon Minerals Corporation Gander Lake Area, Central NL 02D/15
Mineral License Held by Situates near On map sheet	016681M Pike, Lloyd Micmac Lake, Baie Verte Peninsula 12H/09
Mineral License Held by Situates near On map sheet	016682M Pike, Lloyd Micmac Lake, Baie Verte Peninsula 12H/09
Mineral License Held by Situates near On map sheet	016749M Altius Resources Inc. Victoria Lake, Central NL 12A/06

The lands covered by this notice except for the lands within Exempt Mineral Lands, the Exempt Mineral Lands being described in CNLR 1143/96 and NLR 71/98, 104/98, 97/2000, 36/2001, 31/2004, 78/2006, 8/2008 and 28/2009 and outlined on 1:50 000 scale digital maps maintained by the Department of Natural Resources, will be open for staking after the hour of 9:00 a.m. on the 32<sup>nd</sup> clear day after the date of this publication.

DEPARTMENT OF NATURAL RESOURCES  
JIM HINCHEY, P. Geo  
Manager - Mineral Rights

File # 774:5725, 5763, 6560, 6561, 6565, 6568, 6588, 6613, 8790, 8804, 8809, 8898, 8903, 8904, 8908, 8910, 9957, 9964, 9970; 775:0385, 0386, 0387, 0388, 0461, 0466, 0475, 0484, 0489, 0498, 0499, 0501, 0505, 0508, 0509, 0513, 0514, 0517, 0518, 0520, 0533, 0534, 0584

Feb 18

## MUNICIPALITIES ACT

### A FEASIBILITY REPORT PURSUANT OF THE MUNICIPALITIES ACT, 1999

Pursuant to Section 10 of the *Municipalities Act*, 1999, I hereby give Notice of Intent to order the preparation of a Feasibility Report to explore options for the provisions of local government to Humber Village.

Dated at St. John's this 3<sup>rd</sup> day of February, 2011.

DEPARTMENT OF MUNICIPAL AFFAIRS  
Kevin O'Brien, Minister

Feb 18

**CITY OF MOUNT PEARL ACT**



**MOUNT PEARL FENCE REGULATIONS 2011  
NOTICE OF ADOPTION**

TAKE NOTICE that the Mount Pearl City Council has adopted an amendment to the City of Mount Pearl Fence Regulations 2009 made and adopted by the City Council pursuant to the *City of Mount Pearl Act* on January 25<sup>th</sup> 2011.

The purpose of the proposed amendment is to include hedges in the definition of fences.

The amended Regulations come into effect on March 1<sup>st</sup> 2011. Any person who wishes to view the Regulations may do so at the office of the Chief Administrative Officer or by visiting the City's website [www.mountpearl.ca](http://www.mountpearl.ca)

CITY OF MOUNT PEARL  
Gerard Lewis, Chief Administrative Officer

Feb 18

---

**LANDS ACT**

**NOTICE OF INTENT**  
*Lands Act* c36, SNL 1999

NOTICE IS hereby given that JEAN STACEY of Flatrock, NL intends to apply to the Department of Environment and Conservation, two months from the publication of this notice, to acquire title, pursuant to section 7(2) of the said Act, to that piece of Crown Land situated within fifteen (15) metres of the waters of Thorburn Lake in the Electoral District of Trinity North for the purpose of a Residential Wharf more particularly described as follows:

*Bounded on the North by property of Eileen Adams  
for a distance of 15 m;  
Bounded on the East by Thorburn Lake  
for a distance of 15 m;  
Bounded on the South by Thorburn Lake  
for a distance of 15 m;  
Bounded on the West by property of Winston Keats  
for a distance of 15 m;  
and containing an area of  
approximately 225 square metres.*

Any person wishing to object to the application must file the objection in writing, within one month from the publication of this notice, with reasons for it, to the Minister of Environment and Conservation and mail to the nearest Regional Lands Office:

c/o Eastern Regional Lands Office, P.O. Box 8700, 5 Mews Place, St. John's, NL, A1B 4J6.

c/o Central Regional Lands Office, P.O. Box 2222, 230 Airport Boulevard, Fraser Mall, Gander, NL, A1V 2N9

c/o Western Regional Lands Office, P.O. Box 2006, 1 Riverside Drive, Noton Building, Corner Brook, NL, A2H 6J8

c/o Labrador Regional Lands Office, P.O. Box 3014, Station "B", Happy Valley-Goose Bay, NL, A0P 1E0

For further information on the proposed application, please contact: JEAN STACEY at (709) 437-6378.

Feb 18

---

**QUIETING OF TITLES ACT**

**2011 01G 0337  
IN THE SUPREME COURT OF  
NEWFOUNDLAND AND LABRADOR  
TRIAL DIVISION (GENERAL)**

NOTICE OF APPLICATION under the *Quieting of Titles Act*, RSNL, cQ-3

NOTICE is hereby given to all parties that CABOT DEVELOPMENT CORPORATION LIMITED has applied to the Supreme Court of Newfoundland and Labrador, Trial Division, at St. John's, to have title to all that piece or parcel of land situate and being at 51-55 School Road, in the Town of Portugal Cove-St. Philip's, in the province of Newfoundland and Labrador, more particularly described in Schedule "A" of which the Applicant claims to be the owner, investigated and for a Declaration that the Applicant is the absolute owner thereof.

All persons having title adverse to the said title claimed by the Applicant shall file in the Registry of the Supreme Court of Newfoundland and Labrador at St. John's particulars of such adverse claim and serve same, together with an Affidavit verifying same, on the undersigned solicitors for the Applicant on or before the 18<sup>th</sup> day of March, 2011, after which date no party having any claim shall be permitted to file same or be heard except by leave of the Court and subject to such conditions as the Court may deem just. All such adverse claims shall be then investigated as the said Supreme Court of Newfoundland and Labrador at St. John's may direct.

DATED AT the City of St. John's, in the province of Newfoundland and Labrador, this 7<sup>th</sup> day of February, 2011.

FRENCH, NOSEWORTHY & ASSOCIATES  
Solicitors for the Applicant  
PER: Allison Oser

ADDRESS FOR SERVICE

Suite 122, Elizabeth Towers, 100 Elizabeth Avenue  
St. John's, NL A1B 1S1  
Tel: (709) 754-1800  
Fax: (709) 754-2701

**SCHEDULE "A"**

#51-55, School Road, St Philips

ALL THAT piece or parcel of land situate and being at St. Philip's, in the Town of Portugal Cove-St. Philips, in the Province of Newfoundland and Labrador, Canada and being abutted and bounded as follows.

THAT IS TO SAY: Beginning at a point on the northwesterly limit of School Road. The said point being the most easterly angle of land of Reginald N. Tucker, having coordinates of North 5 272144.425 metres and East 314170.992 metres of the three degree Modified Transverse Mercator Projection as adopted for the Province of Newfoundland and Labrador. Central Meridian fifty three degrees west.

THENCE by the land of Reginald N. Tucker aforesaid, north 31°36'49" west 64.049 metres and

THENCE south 65°12'30" west 63.397 metres.

THENCE land of P.O.C. Limited north 31°15'27" west 56.787 metres and

THENCE, south 49°55'42" west 77.417 metres.

THENCE by land of Wallace & Georgina Clarke, north 40°00'29" west 33.315 metres.

THENCE by the land of Lillian Squires, north 32°40'12" west 8.292 metres and

THENCE north 34°25'23" west 37.685 metres.

THENCE by the land now or formerly in possession of Edith Squires, north 33°53'11" west 11.306 metres.

THENCE by the land now or formerly in possession of Edith Squires and land of Hayward Squires north 22°11'10" west 18.300 metres

THENCE by the land of Wm. Tucker, north 58°23'15" east 9.553 metres and

THENCE, north 1°00'32" west 25.996 metres and

THENCE, north 4°20'28" east 73.166 metres and

THENCE, north 9°41'58" east 39.350 metres and

THENCE, north 29°15'36" east 23.800 metres.

THENCE by the land of Cabot Development Corporation Limited, south 55°35'21" east 24.382 metres and

THENCE, south 47°46'06" east 46.927 metres and

THENCE, south 52°52'46" east 30.668 metres and

THENCE, south 36°04'06" east 32.800 metres and

THENCE, south 16°19'29" east 23.131 metres and

THENCE, south 47°25'05" east 39.696 metres and

THENCE, south 44°31'50" east 32.575 metres and

THENCE, south 48°52'45" east 42.000 metres and

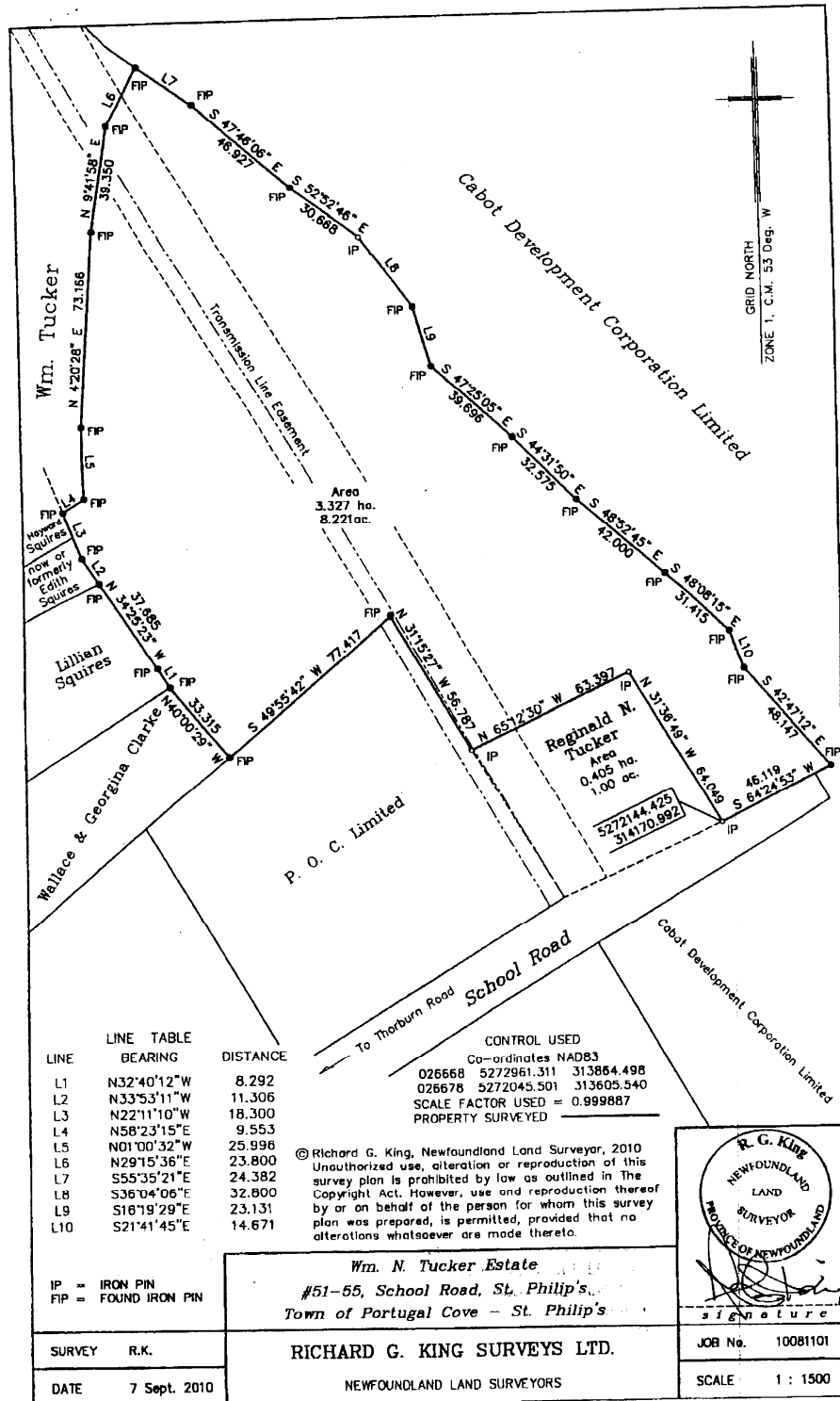
THENCE, south 48°08'15" east 31.415 metres and

THENCE, south 21°41'45" east 14.671 metres and

THENCE, south 42°47'12" east 48.147 metres.

THENCE, along the northwesterly limit of School Road, south 64°24'53" west 46.119 metres, more or less to the point of beginning, and containing an area of 3.327 hectares. A Transmission Line Easement crosses over the property as indicated on the plan of survey. The said piece or parcel of land is more particularly shown on the attached plan of survey, job No. 10081101 dated Sept 7<sup>th</sup>, 2010. All bearings being referred to Grid North.

Richard G. King Surveys Ltd.



**2010 01G No: 6407**  
**IN THE SUPREME COURT OF**  
**NEWFOUNDLAND AND LABRADOR**  
**ST. JOHN'S (GENERAL DIVISION)**

IN THE MATTER OF the *Quieting of Titles Act*, RSNL, 1990, cQ-3 as amended;

AND IN THE MATTER OF an Application of STOS CONSULTING INC., a body corporate under the laws of the Province of Newfoundland and Labrador, pursuant to the said Act;

AND IN THE MATTER OF a piece or parcel of land situate and being on the western side of the Main Road to Calvert North in the Province of Newfoundland and Labrador

**NOTICE OF APPLICATION**

Notice of Application, under the *Quieting of Titles Act*, RSNL, 1990, cQ-3, as amended.

NOTICE IS HEREBY GIVEN to all parties that STOS CONSULTING INC. a body corporate under the laws of the Province of Newfoundland and Labrador, to have the lands situate at Calvert, being more particularly described in the metes and bounds descriptions annexed hereto as Schedule "A" respectively to be investigated and for a declaration that STOS CONSULTING INC. is the absolute owner in fee simple of the said lands.

All persons having title adverse to the title claimed by the STOS CONSULTING INC shall file in the Registry of the Supreme Court of Newfoundland and Labrador, St. John's, in the Province of Newfoundland and Labrador, particulars of such adverse claim and serve the same on the undersigned solicitors for the Applicant on or before the 1<sup>st</sup> day of April, 2011 after which date no party having any claim shall be permitted to file the same or to be heard except by special leave of the Court and subject to such conditions as the Court may deem just.

DATED at St. John's, in the Province of Newfoundland and Labrador on this 28<sup>th</sup> day of January, 2011

O'BRIEN & ANTHONY  
Solicitors for the Applicant  
PER: Gerald F. O'Brien, Q.C.

ADDRESS FOR SERVICE  
279 Duckworth Street  
St. John's, NL A1C 1G9  
Tel: (709) 722-0637  
Fax: (709) 722-6780

**SCHEDULE "A"**

Description  
Main Road, Calvert

All that piece or parcel of land situate and being west of the Main Road in Calvert, in the Electoral District of Ferryland, in the Province of Newfoundland and Labrador, Canada, abutted and bounded as follows, that is to say: Beginning at a point the said point having M.T.M. Grid Coordinates of north 5 213 044.486 metres and east 311 435.783 metres,

THENCE running by land of Alexander Ryan, south fifty five degrees fifty-nine minutes fifty-five seconds west, forty-eight decimal six five zero metres,

THENCE running by land of Alexander Ryan, south twenty-nine degrees fifteen minutes twelve seconds west, twenty-three decimal two eight seven metres.

THENCE running by Crown Land, north eighty-seven degrees forty-five minutes forty one seconds west, one hundred and forty-one decimal seven one two metres,

THENCE running by Crown Land, north sixty-six degrees seventeen minutes twenty-four seconds west, three hundred and sixty-seven decimal eight two zero metres,

THENCE running by Crown Land, north ten degrees fifty-eight minutes thirty seconds east, one hundred and ninety-five decimal six six two metres,

THENCE running by a ten metre Reservation on Calvert River, south seventy-seven degrees eleven minutes thirty seconds east, fifty decimal two seven seven metres,

THENCE running by a ten metre Reservation on Calvert River, north eighty-seven degrees forty-eight minutes fifty seconds east, fifty-five decimal zero zero six metres,

THENCE running by a ten metre Reservation on Calvert River, south seventy-six degrees fifty-six minutes ten seconds east, eighty decimal five two five metres,

THENCE running by the waters of Gut Pond, south twenty-one degrees eighteen minutes zero one seconds east, thirty-nine decimal eight eight five metres,

THENCE running by the waters of Gut Pond, south forty-six degrees seventeen minutes fifty-nine seconds east, forty-three decimal two five eight metres,

THENCE running by the waters of Gut Pond, south eighty-one degrees twenty-five minutes thirty-six seconds east, seventy-eight decimal zero nine three metres,

THENCE running by the waters of Gut Pond, south sixty-six degrees zero seven minutes nineteen seconds east, fifteen decimal seven four zero metres,

THENCE running by the waters of Gut Pond, south forty-two degrees forty-five minutes forty-two seconds east, seventeen decimal four one nine metres,

THENCE running by the waters of Gut Pond, south eighty-seven degrees zero five minute fifty-eight seconds west, twenty-one decimal three six zero metres,

THENCE running by the waters of Gut Pond, south six degrees thirty-five minutes twenty-five seconds west, five decimal zero eight four metres,

THENCE running by the waters of Gut Pond, south thirty-three degrees forty-one minutes fifty-nine seconds east, six decimal nine eight one metres,

THENCE running by the Halley Estates, south twenty-three degrees zero seven minutes zero five seconds east, thirteen decimal two one one metres,

THENCE running by the Halley Estates, south thirty degrees fifty-nine minutes twenty-six seconds east, forty-four decimal three zero nine metres,

THENCE running by the Halley Estates, south zero degrees thirty-six minutes ten seconds west, eighteen decimal one five seven metres,

THENCE running by the Halley Estates, south thirteen degrees thirty-three minutes twenty-seven seconds west, twenty-four decimal two two four metres,

THENCE running by the Halley Estates, south eleven degrees fifty-one minutes forty-eight seconds east, eighteen decimal one four six metres,

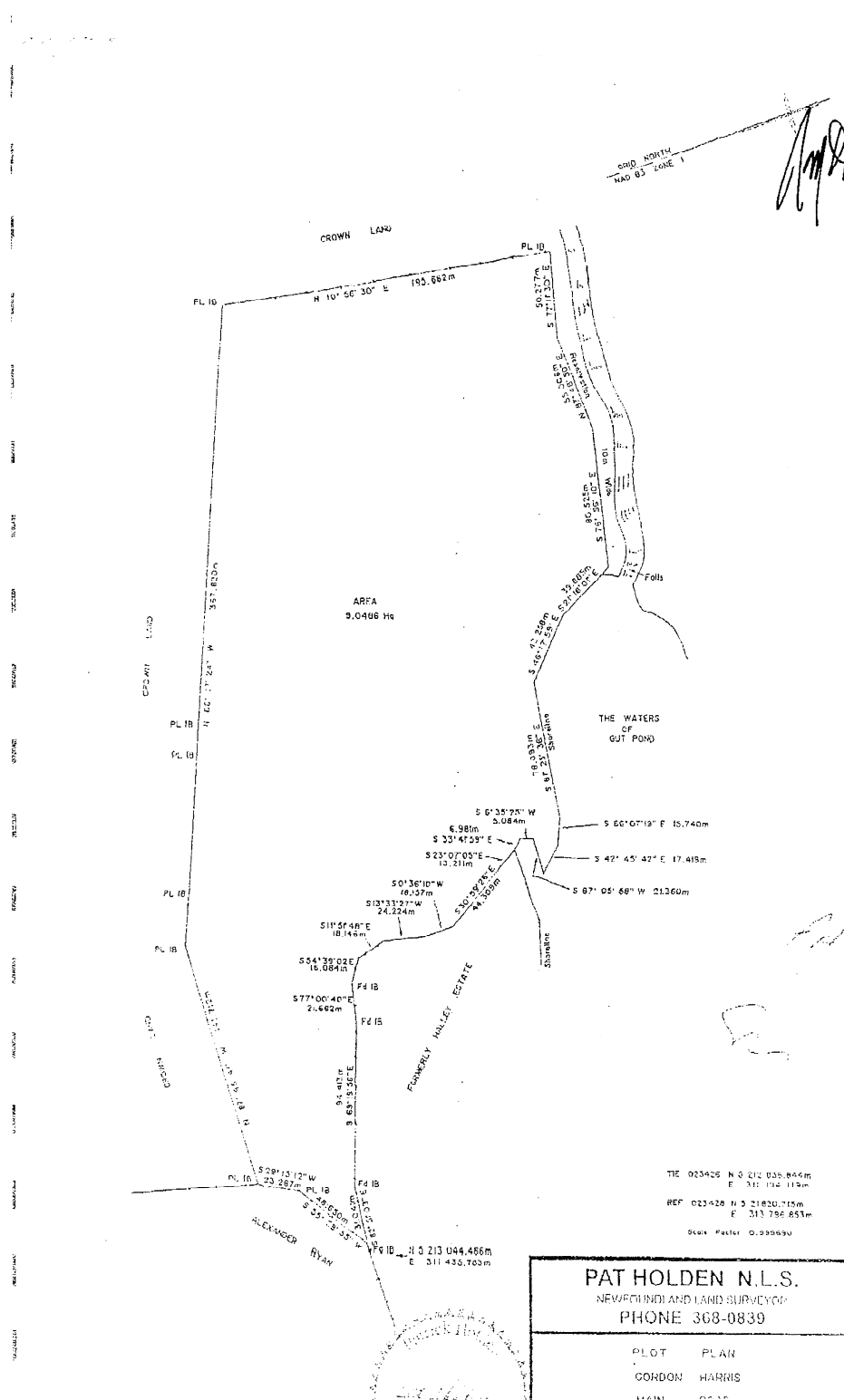
THENCE running by the Halley Estates, south fifty-four degrees thirty-nine minutes zero two seconds east, sixteen decimal zero eight four metres,

THENCE running by the Halley Estates, south seventy-seven degrees zero zero minutes forty seconds east, twenty-one decimal six eight two metres,

THENCE running by the Halley Estates, south sixty-nine degrees nineteen minutes fifty-six seconds east, ninety-four decimal four one three metres,

THENCE running by the Halley Estates, south eighty-two degrees fifty-one minutes zero three seconds east, thirty-one decimal zero four one metres, more or less to the point of beginning and containing in all an area of 9.0486 hectares, more or less which land is more particularly shown on the plan hereto attached.

All bearings are referred to Grid North NAD-83.



**2010 01G 6408**  
**IN THE SUPREME COURT OF**  
**NEWFOUNDLAND AND LABRADOR**  
**ST. JOHN'S (GENERAL DIVISION)**

NOTICE OF APPLICATION under the *Quieting of Titles Act*, RSNL, cQ-3

AND IN THE MATTER OF an Application of STOS CONSULTING INC. a body corporate under the laws of the Province of Newfoundland and Labrador, pursuant to the said Act;

AND IN THE MATTER OF a piece or parcel of land situate and being on the western side of the Main Road to Calvert North in the Province of Newfoundland and Labrador

**NOTICE OF APPLICATION**

Notice of Application, under the *Quieting of Titles Act*, RSNL, 1990, cQ-3, as amended.

NOTICE IS HEREBY GIVEN to all parties that STOS CONSULTING INC. a body corporate under the laws of the Province of Newfoundland and Labrador, to have the lands situate at Calvert, being more particularly described in the metes and bounds descriptions annexed hereto as Schedule "A" respectively to be investigated and for a declaration that STOS CONSULTING INC. is the absolute owner in fee simple of the said lands.

All persons having title adverse to the title claimed by the STOS CONSULTING INC shall file in the Registry of the Supreme Court of Newfoundland and Labrador, St. John's, in the Province of Newfoundland and Labrador, particulars of such adverse claim and serve the same on the undersigned solicitors for the Applicant on or before the 1<sup>st</sup> day of April, 2011 after which date no party having any claim shall be permitted to file the same or to be heard except by special leave of the Court and subject to such conditions as the Court may deem just.

DATED at St. John's, in the Province of Newfoundland and Labrador on this 28<sup>th</sup> day of January, 2011

O'BRIEN & ANTHONY  
Solicitors for the Applicant  
PER: Gerald F. O'Brien, Q.C.

ADDRESS FOR SERVICE  
279 Duckworth Street  
St. John's, NL A1C 1G9  
Tel: (709) 722-0637  
Fax: (709) 722-6780

**SCHEDULE "A"**

Description  
Main Road, Calvert

All that piece or parcel of land situate and being west of the Main Road in Calvert, in the Electoral District of Ferryland, in the Province of Newfoundland and Labrador, Canada, abutted and bounded as follows, that is to say: Beginning at a point the said point having M.T.M. Grid Co-ordinates of north 5 213 047.412 metres and east 311 511.500 metres,

THENCE running by land of Alexander Ryan, north eighty-eight degrees forty-six minutes twenty-five seconds west, five decimal one nine nine metres,

THENCE running by land of Alexander Ryan, south eighty-six degrees fifty-three minutes fifty seconds west, fifty-four decimal eight one five metres,

THENCE running by land of Alexander Ryan, south eighty-nine degrees forty-four minutes thirty-six seconds west, fifteen decimal seven eight five metres,

THENCE running by land of Michael Johnson, north eighty-two degrees fifty-one minutes zero three seconds west, thirty-one decimal zero four one metres,

THENCE running by land of Michael Johnson, north sixty-nine degrees nineteen minutes fifty-six seconds west, ninety-four decimal four one three metres,

THENCE running by land of Michael Johnson, north seventy-seven degrees zero zero minutes forty seconds west, twenty-one decimal six eight two metres,

THENCE running by land of Michael Johnson, north fifty-four degrees thirty-nine minutes zero two seconds west, sixteen decimal zero eight three metres,

THENCE running by land of Michael Johnson, north eleven degrees fifty-one minutes forty-eight seconds west, eighteen decimal one four six metres,

THENCE running by land of Michael Johnson, north thirteen degrees thirty-three minutes twenty-seven seconds east, twenty-four decimal two two four metres,

THENCE running by land of Michael Johnson, north zero degrees thirty-six minutes ten seconds east, eighteen decimal one five seven metres,

THENCE running by land of Michael Johnson, north thirty degrees fifty-nine minutes twenty-six seconds west, forty-four decimal three zero nine metres,

THENCE running by land of Michael Johnson, north twenty-three degrees zero seven minutes zero five seconds west, thirteen decimal two one one metres,

THENCE running by the waters of Gut Pond, south eighty-nine degrees thirty-two minutes fifty-three seconds east, thirty decimal seven zero eight metres,



THENCE running by the waters of Gut Pond, north eighty-seven degrees fifteen minutes twenty-one seconds east, seven decimal zero four three metres,

THENCE running by the waters of Gut Pond, south eighty-seven degrees twenty-four minutes nineteen seconds east, thirteen decimal two eight nine metres,

THENCE running by the waters of Gut Pond, south eighty-seven degrees thirty-nine minutes twenty-nine seconds east, fifteen decimal nine eight zero metres,

THENCE running by the waters of Gut Pond, south fifty-nine degrees fifty-eight minutes thirteen seconds east, thirty-seven decimal two three eight metres,

THENCE running by land of Her Majesty The Queen in Right of Canada, south thirty-five degrees twenty-five minutes thirty-eight seconds west, thirty-four decimal nine five zero metres,

THENCE running by land of Her Majesty The Queen in Right of Canada, south fifty-five degrees zero five minutes zero five seconds east, thirty-eight decimal seven five zero metres,

THENCE running by land of Her Majesty The Queen in Right of Canada, north thirty-five degrees forth-six minutes thirty-eight seconds east, thirty-eight decimal four six one metres,

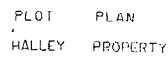
THENCE running by a Public Right of way, south seventy-one degrees eighteen minutes fifteen seconds east, six decimal six nine zero metres,

THENCE running by a Public Right of way, south sixty degrees fifty-one minutes sixteen seconds east, twenty-seven decimal seven three nine metres,

THENCE running by a Public Right of way, south seventy-one degrees forty-five minutes twenty-four seconds east, thirty-five decimal seven five zero metres,

THENCE running by the Main Road, 64.922 metres along the arc of a curve of radius 351.761 metres, whose bearing and chord distance is south fifteen degrees zero four minutes forty-five seconds west, sixty-four decimal eight two nine metres, more or less to the point of beginning and containing in all an area of 24138.24 square metres, more or less which land is more particularly shown on the plan hereto attached.

All bearings are referred to Grid North NAD-83.



**TRUSTEE ACT**

**ESTATE NOTICE**

IN THE MATTER OF the Estate of CYRIL WILLIAM BREEN, Late of Riverhead, St. Mary's Bay, in the Province of Newfoundland & Labrador, Fisherman, Deceased.

All persons claiming to be creditors of, or who have any claims or demands upon or affecting the Estate of the above-named CYRIL WILLIAM BREEN, Deceased, are hereby requested to send particulars of same, in writing, duly attested, to the undersigned Solicitor for the Administrator of the Estate of the said CYRIL WILLIAM BREEN, on or before the 14<sup>th</sup> day of March, 2011, after which date the Administrator will proceed to distribute the said Estate, having regard only to the claims of which the Administrator then shall have had notice.

DATED at St. John's, aforesaid, this 8<sup>th</sup> day of February, 2011.

BRYANT LAW OFFICE  
Solicitor for the Administrator  
PER: Shelley Bryant, LL.B

ADDRESS FOR SERVICE  
P.O. Box 2114, Stn.C.  
6 Bates Hill  
St. John's, NL A1C 5R6  
Tel: (709) 753-9339  
Fax: (709) 753-9755

Feb 18

---





# THE NEWFOUNDLAND AND LABRADOR GAZETTE

## PART II

### SUBORDINATE LEGISLATION

### FILED UNDER THE STATUTES AND SUBORDINATE LEGISLATION ACT

---

Vol. 86

ST. JOHN'S, FRIDAY, FEBRUARY 18, 2011

No. 7

---

### NEWFOUNDLAND AND LABRADOR REGULATIONS

NLR 14/11  
NLR 15/11  
NLR 16/11  
NLR 17/11  
NLR 18/11





## NEWFOUNDLAND AND LABRADOR REGULATION 14/11

*Gift Card Regulations*  
under the  
*Consumer Protection and Business Practices Act*

*(Filed February 15, 2011)*

Under the authority of section 106 of the *Consumer Protection and Business Practices Act*, I make the following regulations.

Dated at St. John's, February 9, 2011.

Harry Harding  
Minister of Government Services

### REGULATIONS

#### *Analysis*

- |                            |                                |
|----------------------------|--------------------------------|
| 1. Short title             | 5. Limits on fees              |
| 2. Definitions             | 6. Refunding unauthorized fee  |
| 3. Expiry dates prohibited | 7. Information to be disclosed |
| 4. Exception               | 8. Commencement                |

Short title

**1.** These regulations may be cited as the *Gift Card Regulations*.

Definitions

**2.** In these regulations

(a) "Act" means the *Consumer Protection and Business Practices Act*;

(b) "gift card" means an electronic card, written certificate or other voucher or payment device, including a gift certificate, that has an express or implied monetary value and is issued or sold in exchange for the future purchase or delivery of goods or services; and

(c) "supplier" means a person, corporation or partnership who issues, sells or offers for sale gift cards in the course of his, her or its business, and includes a salesperson, employee, representative or agent of the person, corporation or partnership.

Expiry dates prohibited

**3.** (1) A supplier shall not issue or sell a gift card that has an expiry date.

(2) A gift card which is issued or sold with an expiry date is redeemable as if it had no expiry date.

(3) On the coming into force of these regulations, the expiry date of a gift card that has not expired has no effect, except where that gift card is exempted under section 4.

Exception

**4.** (1) Notwithstanding section 3, an expiry date is permitted for the following gift cards:

(a) a gift card issued or sold for a charitable purpose; and

(b) a gift card issued for a marketing, advertising or promotional purpose.

(2) Notwithstanding section 3, where an expiry date was included on a gift card issued for a specific good or service before these regulations came into force, that expiry date is valid notwithstanding the coming into force of these regulations.

Limits on fees

**5.** (1) A supplier shall not issue or sell a gift card with a value that is less than the value of the payment made by the purchaser of the gift card.

(2) A supplier shall not charge a fee to a purchaser or holder of a gift card for anything in relation to the gift card except as authorized under this section.



(3) A supplier may charge a fee on the following gift cards:

(a) a gift card issued or sold for a charitable purpose; and

(b) a gift card issued for a marketing, advertising or promotional purpose.

(4) A supplier may charge a fee for replacing a lost or stolen gift card or to customize a gift card.

Refunding unau-  
thorized fee

6. (1) A purchaser or holder of a gift card who pays a fee that is not authorized under section 5 may demand a refund of that fee by giving written notice to the supplier who charged the fee.

(2) A supplier shall provide a refund of an unauthorized fee no later than 15 days after the date the supplier receives a demand for a refund under subsection (1).

Information to be  
disclosed

7. (1) At the time the gift card is issued or sold, a supplier shall clearly disclose all of the following information, in writing:

(a) information respecting all restrictions, limitations, terms and conditions imposed for using, redeeming or replacing the gift card, including any fees or expiry date; and

(b) information respecting how a consumer may obtain information about the gift card, including any remaining balance.

(2) The following information shall be printed directly on the gift card:

(a) any expiry date;

(b) any fee;

(c) any return policy which may apply to purchases with the gift card; and

- (d) contact information which may be used to obtain details about the gift card, including the remaining balance.

Commencement

**8. These regulations come into force on April 1, 2011.**

**©Earl G. Tucker, Queen's Printer**



## NEWFOUNDLAND AND LABRADOR REGULATION 15/11

*Rules of the Supreme Court, 1986 (Amendment)*  
under the  
*Judicature Act*

*(Filed February 15, 2011)*

Under the authority of section 55 of the *Judicature Act*, the Rules Committee of the Court of Appeal makes the following Rules.

Dated at St. John's, February 14, 2011.

Christopher P. Curran, Q.C.  
Registrar of the Supreme Court  
Secretary, Rules Committee

### RULES

#### *Analysis*

1. Rule 57.03 Amdt.  
Appeals

**1. Rule 57.03(4) of the *Rules of the Supreme Court, 1986* is amended by deleting the reference "Rule 55" and substituting the reference "rule 54.04".**

©Earl G. Tucker, Queen's Printer





## NEWFOUNDLAND AND LABRADOR REGULATION 16/11

*Newfoundland and Labrador T'Railway Provincial Park  
Proclamation (Amendment)  
under the  
Provincial Parks Act*

*(Filed February 15, 2011)*

Under the authority of subsection 4(2) of the *Provincial Parks Act*, I make the following order.

Dated at St. John's, February 2, 2011.

Ross Wiseman  
Minister of Environment and Conservation

### ORDER

#### *Analysis*

#### 1. Sch. Amdt.

NLR 93/97  
as amended

**1. The *Newfoundland and Labrador T'Railway Provincial Park Proclamation* is amended by adding at the end of the Schedule the following:**

**The area described in this Schedule is decreased by removing the following parcel of land:**

Musgrave Drive at Steady Brook, Humber East

All that piece or parcel of land lying northwest of Musgrave Drive, in the Town of Steady Brook, in the Electoral District of Humber East, in the Province of Newfoundland and Labrador, being further bounded and described as follows, that is to say:

Beginning at a survey marker, the said survey marker being the westerly angle of the herein described parcel of land, the said angle have coordinates of north 5,423,877.130 and east 353,818.946;

Running then from the above described point of beginning by land of Bernard Grant, north 65° 56' 14" east 20.040 metres to a survey marker;

Then running by land of the Newfoundland and Labrador T'Railway Provincial Park, south 23° 59' 46" east 8.000 metres to a survey marker;

Then continuing by land of the Newfoundland and Labrador T'Railway Provincial Park, south 65° 56' 14" west 21.521 metres to a survey marker;

Then continuing by land of the Newfoundland and Labrador T'Railway Provincial Park, north 13°30'46" west 8.138 metres, more or less, to the point of beginning;

Containing an area of 166 square metres, more or less;

All bearings refer to 3° Grid North, NAD 1983 as referred to the Transverse Mercator Projection for Newfoundland and Labrador with the Central Meridian at 58° 30' west longitude.

**©Earl G. Tucker, Queen's Printer**



## NEWFOUNDLAND AND LABRADOR REGULATION 17/11

*Newfoundland and Labrador T'Railway Provincial Park  
Proclamation (Amendment)  
under the  
Provincial Parks Act*

*(Filed February 15, 2011)*

Under the authority of subsection 4(2) of the *Provincial Parks Act*, I make the following Order.

Dated at St. John's, February 3, 2011.

Ross Wiseman  
Minister of Environment and Conservation

### ORDER

#### *Analysis*

#### 1. Sch. Amdt

NLR 93/97  
as amended

**1. The Schedule to the *Newfoundland and Labrador T'Railway Provincial Park Proclamation* is amended by repealing the references to parcels of land after the words "The area described in this Schedule is decreased by removing the following parcels of land" the first time those words appear, as follows:**

#### 5. Howley Parcel

Also all that piece or parcel of land situate and being east of Howley in the Electoral District of Humber Valley, being a strip of land 30.48

metres wide, lying between two parallel lines and being perpendicularly distant 15.24 metres on either side of a centre line, more particularly described as follows:

Commencing at a point in the easterly limit of Route 401, 30 metres wide, at Howley, being the point of intersection of the said limit with the centre line of the former Canadian National Railway line;

Then running along the former centre line in general northeasterly and southeasterly directions for a distance of approximately 22 kilometres to the point of intersection of the former centre line with the centre of the bridge spanning Kitty's Brook;

Containing in all an area of 67 hectares, more or less;

All bearings refer to grid north.

#### 6. Terra Nova Parcel

All that piece or parcel of land situate and being north of Terra Nova, in the Electoral District of Terra Nova, being a strip of land, 30.48 metres wide, lying between 2 parallel lines and being perpendicularly distant 15.24 metres on either side of a centre line, more particularly described as follows:

Commencing at a point in the centre line of the former Canadian National Railway Line at Terra Nova, being the point of intersection of the former centre line with the centre of the northern end of the bridge spanning Terra Nova Lake ;

Then running along the former centre line in general north and northeasterly directions for a distance of approximately 30 kilometres to the point of intersection of the former centre line with the centre of Northwest Brook;

Containing an area of 93 hectares, more or less;

All bearings refer to grid north.

#### 7. Badger Parcel

All that piece or parcel of land situate and being west of Badger in the Electoral District of Grand Falls-Buchans, being a strip of land 30.48



metres wide, lying between two parallel lines and being perpendicularly distant 15.24 metres, on either side of a centre line more particularly described as follows:

Commencing at a point in the westerly limit of Route 370, 20 metres wide, at Badger; being the point of intersection of the limit with the centre line of the former Canadian National Railway line;

Then running along the former centre line in general northwesterly and westerly directions for a distance of approximately 42 kilometres to the point of intersection of the former centre line with the centre of the bridge spanning Mary March's Brook;

Containing an area of 131 hectares, more or less;

All bearings refer to grid north.

**©Earl G. Tucker, Queen's Printer**





**NEWFOUNDLAND AND LABRADOR  
REGULATION 18/11**

*Newfoundland and Labrador T'Railway Provincial Park Proclamation  
(Amendment)  
under the  
Provincial Parks Act*

*(Filed February 15, 2011)*

Under the authority of subsection 4(2) of the *Provincial Parks Act*, I make the following order.

Dated at St. John's, February 2, 2011.

Ross Wiseman  
Minister of Environment and Conservation

**ORDER**

*Analysis*

1. Sch. Amdt.

NLR 93/97  
as amended

**1. The *Newfoundland and Labrador T'Railway Provincial Park Proclamation* is amended by adding at the end of the Schedule the following:**

**The area described in this Schedule is decreased by removing the following parcel of land:**

Fowlers Road at Conception Bay South, Topsail

All that piece or parcel of land situate and being northeast of Fowlers Road, in the Town of Conception Bay South, in the Provincial Electoral district of Topsail, in the Province of Newfoundland and Labrador, Canada, bounded and abutted as follows:

Beginning at a point, that point having M.T.M grid coordinates C.M. 53° NAD 83 of north 5,265,219.785 and east 309,699.786;

Then running north 66° 24' 00" west a distance of 4.248 metres by land occupied by Stephen O'Neill, 121 Fowlers Road, to a point;

Then turning and running north 24° 21' 00" east, a distance of 7.139 metres by the Newfoundland and Labrador T'Railway Provincial Park, 30.48 metres wide, to a point;

Then turning and running north 57° 31' 35" east a distance of 3.775 metres by the Newfoundland and Labrador T'Railway Provincial Park, 30.48 metres wide, to a point;

Then turning and running north 73° 14' 01" east, a distance of 5.983 metres by the Newfoundland and Labrador T'Railway Provincial Park, 30.48 metres wide, to a point;

Then turning and running south 33° 40' 00" west, a distance of 14.367 metres by land occupied by Stephen O'Neill, 121 Fowlers Road, to the point of beginning.

Containing in all an area of 0.0057 hectares.

All bearings are referred to the meridian of 53° west longitude of the 3° Modified Transverse Mercator Projection, Zone 1, NAD83 for the Province of Newfoundland and Labrador.

**©Earl G. Tucker, Queen's Printer**

## Index

### PART I

City of Mount Pearl Act – Notice .....	46
Corporations Act – Notices .....	37
Mineral Act – Notice .....	44
Municipalities Act – Notice .....	45
City of Mount Pearl Act – Notice .....	46
Lands Act – Notice .....	46
Quieting of Titles Act – Notices .....	46
Trustee Act – Notice .....	55

### PART II

#### CONTINUING INDEX OF SUBORDINATE LEGISLATION

Title of Act and Subordinate Legislation made thereunder	CNLR or NL Reg.	Amendment	NL Gazette Date & Page No.
<b>Consumer Protection and Business Practices Act</b>			
Gift Card Regulations (In Force April 9, 2011)	NLR 14/11	New	Feb 18/11 p. 59
<b>Judicature Act</b>			
Rules of the Supreme Court, 1986 (Amdt.)	NLR 15/11	Amends Rule 57.03	Feb 18/11 p. 63
<b>Provincial Parks Act</b>			
Newfoundland and Labrador T’Railway Provincial Park Proclamation (Amdt.)	NLR 16/11	Amends NLR 93/97 Sch, Amdt.	Feb 18/11 p. 65
Newfoundland and Labrador T’Railway Provincial Park Proclamation (Amdt.)	NLR 17/11	Amends NLR 93/97 Sch, Amdt.	Feb 18/11 p. 67
Newfoundland and Labrador T’Railway Provincial Park Proclamation (Amdt.)	NLR 18/11	Amends NLR 93/97 Sch, Amdt.	Feb 18/11 p. 71

*The Newfoundland and Labrador Gazette* is published from the office of Earl G. Tucker, Queen's Printer.

Copy for publication must be received before **Friday, 4:30 p.m.**, seven days before publication, to ensure inclusion in next issue.

Advertisements should be typewritten or printed legibly, separate from covering letter. Number of insertions required must be stated and the names of all signing officers typewritten or printed.

Copy may be mailed to the address below, faxed to (709) 729-1900 or emailed to [queensprinter@gov.nl.ca](mailto:queensprinter@gov.nl.ca).

Advertising rates are available upon request. Subscription rate for *The Newfoundland and Labrador Gazette* is \$125.00 for 52 weeks plus applicable tax (\$131.25). Weekly issues of \$3.00 per copy, plus tax payable in advance.

All cheques, money orders, etc., should be made payable to THE NEWFOUNDLAND EXCHEQUER ACCOUNT and all correspondence should be addressed to: Office of the Queen's Printer, P. O. Box 8700, Ground Floor, East Block, Confederation Building, St. John's, NL A1B 4J6. Telephone (709) 729-3649. Fax: (709) 729-1900.

Web Site: <http://www.gs.gov.nl.ca/prINTER/index.html>

**Place your order by contacting:**  
**Office of The Queen's Printer**  
**Confederation Building, East Block**  
**St. John's, NL A1B 4J6**  
**Telephone: (709) 729-3649 Fax: (709) 729-1900**  
**email: [queensprinter@gov.nl.ca](mailto:queensprinter@gov.nl.ca)**

**Government Information Product**  
**Publication Rate Mail**

**G.S.T. # R107442683**

**All requests for Subscription and Legislation MUST be prepaid.**