



THE NEWFOUNDLAND AND LABRADOR GAZETTE

PART I

PUBLISHED BY AUTHORITY

Vol. 86		ST. JOHN'S, FRIDAY, APRIL 8, 2011		No. 14
CORPORATIONS ACT		2011-02-07	64272	GROUND EFFECTS LANDSCAPING & EXCAVATION LIMITED
<i>Corporations Act - Section 393</i>				
Local Incorporations		2011-02-07	64273	LABRADOR CITY TAEKWONDO CLUB INC.
For the Month of: February 2011				
Date	Number	Company Name		Tradition Mechanical Service Ltd.
2011-02-01	64246	64246 NEWFOUNDLAND AND LABRADOR INC.	2011-02-07	Patey's Variety Ltd.
			2011-02-08	ADVANCED PD SOLUTIONS INC.
2011-02-01	64247	CARRICK ENGINEERING INC.	2011-02-07	64268
2011-02-01	64243	PARADISE WALL-BEDS LTD.	2011-02-08	64279
2011-02-01	64242	REJUVENATION ROOM SPA LTD.	2011-02-08	64283
			2011-02-08	64277
2011-02-01	64238	TYJEN HOLDINGS LIMITED		Arctic Petroleum Solutions Inc.
2011-02-01	64227	Jade Garden Limited	2011-02-08	64284
2011-02-01	64235	64235 NEWFOUNDLAND AND LABRADOR INC.	2011-02-08	64282
			2011-02-08	64270
2011-02-01	64236	Consolidated Maritime Enterprises Ltd.	2011-02-08	64275
			2011-02-08	64276
2011-02-01	64237	64237 NEWFOUNDLAND & LABRADOR CORP	2011-02-09	64287
2011-02-02	64250	ATK FISHERIES LIMITED	2011-02-09	64285
2011-02-02	64252	DISCOUNT CONSTRUCTION LTD.	2011-02-10	64292
			2011-02-10	64291
2011-02-02	64248	INTEGRITY BUILDERS INC	2011-02-10	64294
2011-02-02	64249	QUINTAL PRESS INC.	2011-02-10	64288
2011-02-02	64244	Extreme Comfort NL Inc.		64288 NEWFOUNDLAND & LABRADOR INC.
2011-02-02	64245	JD Myles Construction Inc.	2011-02-10	64289
2011-02-03	64251	Corduroy Developers Limited		Open Source Canada IT Solutions Inc.
2011-02-03	64254	Cabot Inspection Services Inc.	2011-02-11	64304
2011-02-03	64255	64255 NEWFOUNDLAND & LABRADOR LTD	2011-02-11	64301
2011-02-04	64261	J & K FRAMPTON		FRED J. MARSHALL CONSULTING LTD.
			2011-02-11	64302
2011-02-04	64263	ENTERPRISES LIMITED		SMITH'S FURNITURE & APPLIANCES INC.
		TREPASSEY NORTHEAST		SPARROW HOLDINGS LTD.
		TRAIL ASSOCIATION INC.	2011-02-11	64305
			2011-02-11	64300
				Robert Daley Enterprises Limited

THE NEWFOUNDLAND AND LABRADOR GAZETTE
April 8, 2011

2011-02-14	64309	FOGGY ROCK CAPITAL CORPORATION	2011-02-22	64364	Jagged Rock Productions Inc.
			2011-02-22	64366	Marener Industries (NL) Inc.
2011-02-14	64314	NL MAGIC BUBBLES AUTO DETAILING INC.	2011-02-22	64367	Auto Impact Solutions Ltd.
			2011-02-23	64379	64379 NEWFOUNDLAND AND LABRADOR LIMITED
2011-02-14	64311	R&S LANDSCAPING LTD.			
2011-02-14	64313	WAS HOLDINGS LTD	2011-02-23	64378	NL CASH SERVICES INC.
2011-02-14	64307	64307 NEWFOUNDLAND & LABRADOR CORP	2011-02-23	64381	SOUTHERN PRIDE LTD.
			2011-02-23	64374	Protec Safety Solutions Inc.
2011-02-15	64319	EXPLOITS VALLEY DENTAL LAB INC.	2011-02-24	64389	CBS FORMAL WEAR LTD
			2011-02-24	64399	FOR OUR LOVE OF CLAY INC.
2011-02-15	64323	PLACENTIA 350 INC.			
2011-02-15	64308	Anthom Consulting Inc.	2011-02-24	64390	GREAT AVALON FISHERIES INC.
2011-02-15	64316	Radio Grand Bank Inc.			
2011-02-15	64317	Warrens Consulting LTD	2011-02-24	64393	ICEBERG CANADA OPERATIONS INC
2011-02-15	64318	Ping Technologies Inc.			
2011-02-16	64330	DR. FRANCIS O'DEA AND DR. JENNIFER O'DEA PROFESSIONAL MEDICAL CORPORATION	2011-02-24	64375	C. Green Electrical Services Ltd.
			2011-02-24	64376	The Lifesaving Team Inc.
			2011-02-24	64377	ROD WALSH CONSULTING SERVICES LTD
2011-02-16	64331	DR. JAMIE B. FARRELL PROFESSIONAL MEDICAL CORPORATION	2011-02-24	64383	64383 NEWFOUNDLAND & LABRADOR INC.
			2011-02-24	64384	Big Red Bow Inc.
2011-02-16	64333	DR. R. RUDLAND PMC INC.	2011-02-24	64385	Holson Fabrication and Machining Limited
2011-02-16	64329	DR. SARAH K. HEALEY PROFESSIONAL MEDICAL CORPORATION	2011-02-24	64386	Chung King Restaurant Inc
			2011-02-24	64387	BURIN INSPECTION SERVICES INC.
2011-02-17	64340	64340 NEWFOUNDLAND & LABRADOR INC.	2011-02-25	64402	ALPHA AND OMEGA MINISTRIES INC
2011-02-17	64338	BALANCE REHABILITATION CLINIC INC.	2011-02-25	64405	NTC HOLDINGS INC.
2011-02-17	64337	FRESH HEALTH AND WELLNESS INC.	2011-02-25	64388	Squires Garden Services Inc.
			2011-02-25	64395	Andon Investments Limited
2011-02-17	64342	STEPHENVILLE HISTORICAL SOCIETY INC.	2011-02-25	64396	Perrier Investments Limited
			2011-02-25	64397	Folley Hill Holdings Inc.
2011-02-17	64334	Bronson Investments Inc.	2011-02-25	64398	The Tot Spot Incorporated
2011-02-17	64335	Kellia Consulting Inc.	2011-02-25	64400	64400 NEWFOUNDLAND & LABRADOR LTD.
2011-02-17	64336	Leaside Manor Inc			
2011-02-18	64352	64352 NEWFOUNDLAND AND LABRADOR LTD.	2011-02-25	64401	Well Testing Consultant Services Inc.
2011-02-18	64354	64354 NEWFOUNDLAND AND LABRADOR LIMITED	2011-02-28	64420	64420 NEWFOUNDLAND AND LABRADOR INC.
2011-02-18	64346	BY OTHERS INSTALL LIMITED	2011-02-28	64415	ARNOLD'S LANDSCAPING INC.
2011-02-18	64351	CENTRAL AVIATION HOLDINGS LTD.	2011-02-28	64414	CW SOLUTIONS LTD
			2011-02-28	64417	GREEN ENERGY SOLUTIONS INC.
2011-02-18	64350	JRM PUBLISHING INC			
2011-02-18	64345	MUDDERS KITCHEN LTD	2011-02-28	64419	HOLSON RENEWABLE ENERGY LIMITED
2011-02-18	64353	RGM INVESTMENTS INC.			
2011-02-18	64343	Dorion Holdings Inc	2011-02-28	64422	RUSSELL AND MADORE PROPERTY LTD.
2011-02-18	64344	Karlande Designs Limited			
2011-02-21	64357	PROTECTION AND CONSERVATION OF FRESHWATER ECOSYSTEMS INC.	2011-02-28	64416	TROY'S TRUCKING & EXCAVATION LTD.
			2011-02-28	64408	Peddle Properties Limited
			2011-02-28	64409	64409 NEWFOUNDLAND & LABRADOR CORP
2011-02-21	64361	R.C. SHEPHERDS' FUND FOUNDATION OF WESTERN NEWFOUNDLAND INC.	2011-02-28	64410	Labrador West Child Care Inc.
			2011-02-28	64411	Masonic Lodge Humber Corp.
2011-02-21	64358	RED BARN HOLDINGS INC.	2011-02-28	64412	Avalon Glass & Aluminum Limited
2011-02-21	64355	A.M. Moores Electrical Inc.			
2011-02-21	64356	DeNovo Developments Ltd.			
2011-02-22	64373	64373 NEWFOUNDLAND AND LABRADOR LIMITED	Total Incorporations: 127		
2011-02-22	64371	DOLLARD HOLDINGS INC.	Corporations Act - Section 331		
2011-02-22	64372	DOLLARD MANAGEMENT INC.	Local Revivals		
			For the Month of: February 2011		
2011-02-22	64370	QUALITY SAFETY RESOURCES INC.	Date	Number	Company Name
			2011-02-02	4579	Commodore Mining Company Limited
2011-02-22	64368	RED DRESS ENTERTAINMENT INC.	2011-02-04	9873	Glovertown Mill Work Limited
2011-02-22	64362	Tenacious Industries Inc.			

THE NEWFOUNDLAND AND LABRADOR GAZETTE
April 8, 2011

2011-02-09	43988	COMPUTER LIQUIDATION CENTER INC.	2011-02-08	53962	A-1 CHEM INTERNATIONAL INC.
2011-02-11	37301	Fondation Emile Benoit Inc.	2011-02-08	63792	Bristol Court Inc.
2011-02-11	25356	Henna Inc.	2011-02-08	23740	Delaney Holdings Limited
2011-02-14	47032	11212 Newfoundland Incorporated	2011-02-08	63834	EMERA NEWFOUNDLAND & LABRADOR INCORPORATED
2011-02-14	41012	JUNCTION TRAIL BLAZERS SNOWMOBILE CLUB INC.	2011-02-08	2738	J.M. DELANEY LUMBER LIMITED
2011-02-17	13859	CLARENVILLE REALTY LIMITED	2011-02-08	27288	Kirkland, Balsom And Associates Inc.
2011-02-17	7370	Cormack Realty & Financial Services Limited	2011-02-09	47850	J & P CLARKE ENTERPRISES LTD.
2011-02-21	13451	Premier Formalwear Rental & Sales, Limited	2011-02-09	27332	QUEBEC - LABRADOR FISHING AND ADVENTURES LTD.
2011-02-21	41068	RG APPLEBY LIMITED	2011-02-10	53239	NEWFOUNDLAND AND LABRADOR DEAF SPORTS ASSOCIATION, INC.
2011-02-22	41008	D'Wire Electric Inc.			RAP Electrical Ltd
2011-02-28	14539	Continental Marble Industries Limited			C. WHALEN'S HOLDINGS INC.
Total Revivals: 13			2011-02-10	53819	Fairwood Limited
			2011-02-11	58292	NEW FOUND HOMES AND RENOVATIONS LIMITED
<i>Corporations Act - Section 296 and 393</i>			2011-02-14	18724	PUDDLE POND RESOURCES INC.
Local Continuances			2011-02-14	61428	SOCIETY OF UNITED FISHERMEN
For the Month of: February 2011			2011-02-14	63013	51237 NEWFOUNDLAND & LABRADOR INC.
Date	Number	Company Name	2011-02-14	354	CLARKE PROPERTIES LIMITED
2011-02-10	64296	DR. SHELLEY DALTON PROFESSIONAL MEDICAL CORPORATION	2011-02-15	51237	JUST PLUMB RIGHT INC.
2011-02-14	64315	RDO CONSULTING LTD.	2011-02-15	45808	Mugford's Contracting Limited
Total Continuances: 2			2011-02-15	63256	GARDNER HOLDINGS INC.
<i>Corporations Act - Section 286</i>			2011-02-15	15297	HUMBER VALLEY PAVING LTD.
Local Amendments			2011-02-16	39800	Jack and Jill Preschool Association
For the Month of: February 2011			2011-02-16	56475	ROTARY CLUB OF ST. JOHN'S ENDOWMENT FOUNDATION INC.
Date	Number	Company Name	2011-02-16	9402	COADY'S FISHING COMPANY LTD.
2011-02-01	63955	ISLAND VIEW GUEST HOME INC.	2011-02-16	29489	Corner Brook Status of Women Council
2011-02-01	58953	R & M Excavating Limited	2011-02-17	57821	Skanes Enterprises Inc.
2011-02-02	24025	CENTRAL CONSULTING SERVICES INC.	2011-02-17	19341	SKYWAY HOLDINGS INC.
2011-02-02	4579	Commodore Mining Company Limited	2011-02-17	51687	WILLIAM DAWE PROFESSIONAL CORPORATION INC.
2011-02-02	17534	THE ELECTRONIC SYSTEMS GROUP INC.	2011-02-17	49688	Young Investments Limited
2011-02-03	59600	Eastern Star Group Canada Inc.	2011-02-18	62738	RG APPLEBY LIMITED
2011-02-04	61538	DR. JOSEPH F. COFFEY (2010) PROFESSIONAL MEDICAL CORPORATION	2011-02-21	41068	SEACRAFT LIMITED
2011-02-04	61099	GROS MORNE SUMMER MUSIC INC.	2011-02-21	10527	DR. MARJORIE MACDONALD (2006) PROFESSIONAL DENTAL CORPORATION
2011-02-04	61099	GROS MORNE SUMMER MUSIC INC.	2011-02-22	53676	63517 NEWFOUNDLAND & LABRADOR LIMITED
2011-02-04	51257	UNIQUE HOLDINGS LIMITED	2011-02-23	63517	E.B. CONSULTING LIMITED
2011-02-07	63974	BENNETT'S CONSTRUCTION AND SUPPLIES (2011) LIMITED	2011-02-23	62021	Rideout Tool and Machine Inc.
2011-02-07	7158	BENNETT'S INVESTMENTS LIMITED	2011-02-23	22889	EXOTIC LIMOUSINE SERVICE INC.
2011-02-07	60031	BUTTERPOT RESOURCES INC.	2011-02-24	52456	61352 NEWFOUNDLAND & LABRADOR INC
2011-02-07	35114	COMMUNITY JUSTICE INITIATIVES (NEWFOUNDLAND & LABRADOR) INC.	2011-02-25	61352	BOGART'S JEWELRY LTD.
2011-02-08	53962	A-1 CHEM INTERNATIONAL INC.	2011-02-25	30879	Hopkins and Peters Limited
			2011-02-25	11525	WOODMECH SYSTEMS
			2011-02-25	53010	NEWFOUNDLAND LTD.

THE NEWFOUNDLAND AND LABRADOR GAZETTE
April 8, 2011

2011-02-28 64234 NEWCO METAL & AUTO
RECYCLING LIMITED
2011-02-28 54362 PANGEO SUBSEA INC.
2011-02-28 56450 TECH DIRECTIONAL
SERVICES INC.

Total Amendments: 58

Corporations Act - Section 337

Local Intents to Dissolve

For the Month of: February 2011

Date	Number	Company Name
2011-02-21	59549	SD Property Limited

Total Intents to Dissolve: 1

Corporations Act - Section 335

Local Dissolutions

For the Month of: February 2011

Date	Number	Company Name
2011-02-01	62978	62978 NEWFOUNDLAND & LABRADOR INC.
2011-02-02	43896	B & M International Ltd
2011-02-04	52500	52500 NEWFOUNDLAND & LABRADOR INCORPORATED
2011-02-04	57973	COMMUNITY OF HEARTS FELLOWSHIP INC.
2011-02-10	54427	MB DESIGN SERVICES INC
2011-02-11	33482	10351 NFLD INC.
2011-02-11	28356	Perrot Fisheries Limited
2011-02-11	57376	THE ROTARY ENDOWMENT FOUNDATION OF ST. JOHN'S INC.
2011-02-14	30853	10240 Newfoundland Inc.
2011-02-14	39262	ABC Investments Inc.
2011-02-14	60090	BACK COVE HOLDINGS LIMITED
2011-02-14	62178	BKD HOLDINGS LIMITED
2011-02-14	62180	BLACKLER HOLDINGS LIMITED
2011-02-14	62185	BTB HOLDINGS LIMITED
2011-02-14	50463	EASTCAN DRILLING LIMITED
2011-02-14	62182	ROPSON HOLDINGS LIMITED
2011-02-14	31197	TAD HOLDINGS LTD.
2011-02-16	61747	Sanco Builders Ltd.
2011-02-18	33934	E & L Apartments Ltd.
2011-02-21	51107	51107 NEWFOUNDLAND & LABRADOR CORP
2011-02-21	40973	FOUNDATION MINING COMPANY LIMITED
2011-02-21	35711	GIBBONS & ASSOCIATES INC.
2011-02-23	47343	Equity Group Limited
2011-02-23	14144	MAC Investments and Consultants Limited
2011-02-24	53069	53069 NEWFOUNDLAND AND LABRADOR LTD.
2011-02-24	53126	F. Rumbolt Consulting Inc.
2011-02-25	34225	34225 NEWFOUNDLAND & LABRADOR INC.
2011-02-25	48739	SMB EXTREME SUPPLIES LTD.
2011-02-28	45104	DECISION PRO LTD.

Total Dissolutions: 29

Corporations Act - Section 299

Local Discontinuances

For the Month of: February 2011

Date	Number	Company Name
2011-02-02	54336	54336 NEWFOUNDLAND & LABRADOR INC.
2011-02-02	55023	55023 NEWFOUNDLAND & LABRADOR INC.
2011-02-02	48602	MARY BROWN'S HOLDINGS CORPORATION
2011-02-04	52712	DR. JAMES HUTCHINSON PROFESSIONAL MEDICAL CORPORATION
2011-02-15	48213	ICEBERG CANADA CORPORATION

Total Discontinuances: 5

Corporations Act - Section 286

Local Name Changes

For the Month of: February 2011

Number	Company Name
63955	ISLAND VIEW GUEST HOME INC.
2011-02-01 From:	Oceanview Guest Home Inc.
63974	BENNETT'S CONSTRUCTION AND SUPPLIES (2011) LIMITED
2011-02-07 From:	63974 NEWFOUNDLAND & LABRADOR INC.
60031	BUTTERPOT RESOURCES INC.
2011-02-07 From:	AURORA ENERGY RESOURCES INC.
63792	Bristol Court Inc.
2011-02-08 From:	63792 NEWFOUNDLAND & LABRADOR INC.
63834	EMERA NEWFOUNDLAND & LABRADOR INCORPORATED
2011-02-08 From:	63834 NEWFOUNDLAND & LABRADOR INC.
49688	WILLIAM DAWE PROFESSIONAL CORPORATION INC.
2011-02-17 From:	WILLIAM J. DAWE INC.
2011-02-18 From:	Young Investments Limited
	WestRock Contractors Inc.

Total Name Changes: 7

Corporations Act - Section 443

Extra-Provincial Registrations

For the Month of: February 2011

Date	Number	Company Name
2011-02-01	64239	QUEST RARE MINERALS LTD.
		MINÉRAUX RARES QUEST LTÉE
2011-02-02	64256	MARTEC LIMITED

THE NEWFOUNDLAND AND LABRADOR GAZETTE
April 8, 2011

2011-02-03	64260	CATASTROPHE RESPONSE UNIT INC.	2011-02-25	64406	L'IMMOBILIERE GUYANAISE
2011-02-03	64259	CENTREPOINT NAVIGATION INC.	2011-02-25	64403	STONE 2011 FLOW-THROUGH GP INC.
2011-02-03	64257	CROHN'S AND COLITIS FOUNDATION OF CANADA/FONDATION CANADIENNE DES MALADIES INFLAMMATOIRES DE L'INTESTIN	2011-02-28	64418	ABITIBI GEOPHYSIQUE INC.
			2011-02-28	64413	ABITIBI GEOPHYSICS INC.
					RED MILE MINERALS CORP.
			Total Registrations: 39		
			<i>Corporations Act - Section 451</i>		
			Extra-Provincial Name Changes		
			For the Month of: February 2011		
			Number		Company Name
2011-02-04	64266	7767072 CANADA INC.	64197		AURORA ENERGY LTD.
2011-02-04	64264	PATHWAY MINING 2011 INC.	2011-02-02	From:	0897974 B.C. LTD.
2011-02-04	64267	SAMUEL, SON & CO., LIMITED			
2011-02-07	64274	BINARY DAWN INTERACTIVE INC.	55666		SUBSEA 7 CANADA INC.
2011-02-08	64281	NBC COMMODITIES (2010) INC.	2011-02-02	From:	ACERGY CANADA INC.
		NBC MARCHANDISES (2010) INC.	59389		IRVING OIL OPERATIONS GENERAL PARTNER LIMITED
2011-02-10	64293	BELMONT FINANCIAL SERVICES INCORPORATED	2011-02-07	From:	IRVING OIL OPERATIONS LIMITED
2011-02-10	64297	CON-FORTE CONTRACTING COMPANY INC.			
2011-02-10	64290	INTERNATIONAL CREDIT EXPERTS INC.	64159		HOSPITALITY NETWORK CANADA (2011) INC.
2011-02-10	64299	LES SERVICES FINANCIERS PRESTIGE FINANCIAL SERVICES INC.	2011-02-08	From:	101173849 SASKATCHEWAN LTD.
2011-02-10	64298	SAS-CAN MASONRY AND RESTORATION INC.	55222		LUCKY NATIONWIDE HOLDINGS LTD.
2011-02-11	64303	STERLING MUTUALS INC.	2011-02-11	From:	0777375 B.C. LTD.
2011-02-14	64312	NORREP 2011 MANAGEMENT INC.			
2011-02-14	64310	YUANYANG SEAFOOD IMPORT & EXPORT LTD.	53505		CJM SOLUTIONS + INC.
2011-02-15	64324	AEROPOSTALE CANADA, INC.	2011-02-23	From:	C.J. MATTHEWS & ASSOCIATES LIMITED
2011-02-15	64321	EPOCH INVESTMENT PARTNERS, INC.	Total Name Changes: 6		
2011-02-15	64325	ICEBERG CANADA CORPORATION	<i>Corporations Act - Section 294</i>		
2011-02-15	64322	LABEC CENTURY IRON ORE INC.	Extra-Provincial Registrations for Amalgamation		
			For the Month of: February 2011		
			Date	Number	Company Name
2011-02-16	64326	FIRST CALL SURPLUS PARTS LIMITED	2011-02-01	64240	CANOE FINANCIAL CORP.
2011-02-16	64327	THOMAS COOK CANADA INC.	From:	63109	CANOE FINANCIAL CORP.
2011-02-17	64341	TIMEX GROUP CANADA, INC.	2011-02-01	64241	TYCO HEALTHCARE GROUP CANADA ULC
2011-02-18	64348	ALLISON JONES CONSULTING SERVICES INC.	From:	5566F	TYCO HEALTHCARE GROUP CANADA ULC
2011-02-18	64347	BAKERCORP CANADA	2011-02-02	64253	GENERAL MOTORS OF CANADA LIMITED
2011-02-18	64349	ENDEAVOUR SOLUTIONS INC.			GENERAL MOTORS DU CANADA LIMITEE
2011-02-21	64359	7312326 CANADA INC.	From:	53886	GENERAL MOTORS OF CANADA LIMITED
2011-02-21	64365	MCFADDEN'S HARDWOOD & HARDWARE INC.			GENERAL MOTORS DU CANADA LIMITEE
2011-02-23	64382	K.G.B. CONSULTANT CORP.			
2011-02-23	64380	MAXIMUS CANADA SERVICES, INC.	2011-02-03	64258	BELL ALIANT REGIONAL COMMUNICATIONS INC.
2011-02-24	64394	CUSTOMPLAN FINANCIAL ADVISORS INC.			BELL ALIANT COMMUNICATIONS RÉGIONALES INC.
2011-02-24	64392	PRINT24 ONLINEONDEMAND CANADA INC.			
2011-02-24	64391	TOURAM GENERAL PARTNER INC.			
		COMMANDITÉ TOURAM INC.			

THE NEWFOUNDLAND AND LABRADOR GAZETTE
April 8, 2011

From:	54240	BELL ALIANT REGIONAL COMMUNICATIONS INC.	2011-02-21	64363	GL NOBLE DENTON CANADA LIMITED
		BELL ALIANT COMMUNICATIONS RÉGIONALES INC.	From:	56880	GL INDUSTRIAL SERVICES CANADA LTD.
2011-02-04	64262	OMNI FACILITY SERVICES CANADA LIMITED	2011-02-22	64369	UNITED PARCEL SERVICE CANADA LTD.
From:	63613	OMNI FACILITY SERVICES CANADA LIMITED	From:	2727F	UNITED PARCEL SERVICE CANADA LTD.
					UNITED PARCEL SERVICE DU CANADA LTEE
2011-02-04	64265	PROGRAMMED INSURANCE BROKERS INC.	2011-02-25	64407	FIDELITY INVESTMENTS CANADA ULC
From:	6466F	PROGRAMMED INSURANCE BROKERS INC.	From:	62202	FIDELITY INVESTMENTS CANADA ULC
2011-02-07	64271	INVESCO TRIMARK LTD./INVESCO TRIMARK LTÉE	2011-02-25	64404	HUDSON'S BAY COMPANY COMPAGNIE DE LA BAIE D'HUDSON
From:	6388F	INVESCO TRIMARK LTD./INVESCO TRIMARK LTÉE	From:	53786	HUDSON'S BAY COMPANY/COMPAGNIE DE LA BAIE D'HUDSON
2011-02-08	64278	PREMIERE EXECUTIVE SUITES/ATLANTIC LIMITED			
From:	63184	PREMIERE EXECUTIVE SUITES/ST. JOHN'S LIMITED	2011-02-28	64421	DEALERTRACK CANADA, INC.
			From:	57846	DEALERTRACK CANADA, INC.
2011-02-10	64295	IA CLARINGTON INVESTMENTS INC. PLACEMENTS IA CLARINGTON INC.	Total Registrations for Amalgamation: 20		
From:	59745	IA CLARINGTON INVESTMENTS INC. PLACEMENTS IA CLARINGTON INC.	<i>Corporations Act - Sections 408 and 341</i>		
			Extra-Provincial Involuntary Cancellations		
			For the Month of: February 2011		
			Date	Number	Company Name
2011-02-11	64306	MTS ALLSTREAM INC.	2011-02-10	6589F	1453968 ONTARIO INC.
From:	61873	MTS ALLSTREAM INC.	2011-02-10	53709	1514927 ONTARIO LTD.
			2011-02-10	53990	2030250 ONTARIO LIMITED
2011-02-15	64320	GREY ROCK MINING INC.	2011-02-10	56071	2247837 MANITOBA LTD.
From:	52108	NORTH LINKS CONSTRUCTION COMPANY LIMITED	2011-02-10	53577	2967-6822 QUÉBEC INC.
			2011-02-10	53052	3099869 NOVA SCOTIA LIMITED
	60489	ROCKCLIFFE CONSTRUCTION INC.	2011-02-10	52717	A.L.K. CONSTRUCTION LTD.
	51063	RSM MUNICIPAL INC.	2011-02-10	50612	AAA CREDIT & RECOVERY SERVICES INC.
2011-02-16	64328	VIPOND INC.	2011-02-10	55217	ACHIEVING SAFETY LTD.
From:	59954	VIPOND INC.	2011-02-10	55586	AGITAT CO LIMITED
			2011-02-10	53736	AGS ENERGY EQUITIES 2006 LTD.
2011-02-16	64332	WESTON FOODS (CANADA) INC.	2011-02-10	5285F	Armco Boiler Services Ltd.
From:	54977	WESTON FOODS (CANADA) INC.	2011-02-10	52151	ATLANTIC FROST SEAFOODS LLC
			2011-02-10	54046	AUGEN GENERAL PARTNER XII INC.
2011-02-17	64339	THOMSON REUTERS CANADA LIMITED/THOMSON REUTERS CANADA LIMITÉE	2011-02-10	50748	BIG HOOK INTERNATIONAL LIMITED
From:	55527	THOMSON REUTERS CANADA LIMITED/THOMSON REUTERS CANADA LIMITÉE	2011-02-10	6627F	BITON LIMITED
			2011-02-10	4982F	BRITISH CANADIAN MINES LIMITED
			2011-02-10	5071F	BROGAN INC.
2011-02-21	64360	BOSCH REXROTH CANADA CORP.	2011-02-10	56463	BROOKE CANADA FUNDING, INC.
		CORPORATION BOSCH REXROTH CANADA	2011-02-10	4325F	C.G. EMERY INTERNATIONAL LIMITED
From:	53184	BOSCH REXROTH CANADA CORP./CORPORATION BOSCH REXROTH CANADA	2011-02-10	5046F	C.T.C. Container Trading (U.K.) Limited
			2011-02-10	55651	CANVEST INC.
			2011-02-10	2621F	CENTENNIAL 2000 INC.
			2011-02-10	54375	CENTUM NORAND MORTGAGES LTD.

THE NEWFOUNDLAND AND LABRADOR GAZETTE
April 8, 2011

2011-02-10	4177F	Claircom Canada, Inc.	2011-02-10	6717F	MCKESSON HEALTH SOLUTIONS CANADA COMPANY
2011-02-10	6188F	Clean Us Co.\Nettoyez Nous Cie			
2011-02-10	54939	CMD INSURANCE SERVICES INC.	2011-02-10	6716F	MCKESSON INFORMATION SOLUTIONS CANADA COMPANY
2011-02-10	50926	CMP 2005 CORPORATION			
2011-02-10	53219	CMP 2006 CORPORATION			
2011-02-10	6137F	COA COASTAL OCEAN ASSOCIATES INCORPORATED	2011-02-10	6582F	MICCO DEVELOPMENTS LIMITED
2011-02-10	52814	COLDMATIC BUILDING SYSTEMS CORP.	2011-02-10	6234F	MJM INVESTIGATIONS CANADA CORPORATION/ CORPORATION INVESTIGATIONS MJM CANADA
2011-02-10	52813	COLDMATIC REFRIGERATION PRODUCTS CORP.	2011-02-10	4950F	MORGANITE CANADA CORPORATION CORPORATION MORGANITE DU CANADA
2011-02-10	5499F	COLDWELL BANKER CANADA LIMITED			
2011-02-10	51229	COLIN PERRY SERVICES INC.	2011-02-10	51065	MSP 2005 GP INC.
2011-02-10	2356F	CRAIG MANUFACTURING LTD.	2011-02-10	51340	MULCAHY & ASSOCIATES INC.
2011-02-10	55679	CROMBIE KENNEDY NASMARK INC.	2011-02-10	3926F	MUSIC WORLD LIMITED
2011-02-10	4116F	CSL HOSPITAL SERVICES LTD.	2011-02-10	56389	NEILL AND GUNTER (NOVA SCOTIA) LIMITED
2011-02-10	5226F	CUA FINANCIAL SERVICES INCORPORATED	2011-02-10	54194	NEILL AND GUNTER LIMITED
2011-02-10	54141	DHI WATER AND ENVIRONMENT, ULC	2011-02-10	6108F	NEUWEST EQUIPMENT RENTALS INC.
2011-02-10	53788	DINECORP HOSPITALITY INC.	2011-02-10	5241F	Nordica Foods A/S
2011-02-10	54871	DJD CONSULTING INC.	2011-02-10	56138	NORTHERN LORENA RESOURCES INC.
2011-02-10	53847	EASTERN REHABILITATION INC.	2011-02-10	53921	NOVA PERMA COATING LIMITED
2011-02-10	55279	EPIC PROTECTION GROUP LTD.	2011-02-10	1481F	O. Mustad & Son (Can.) Limited
2011-02-10	5571F	ERB AND ERB INSURANCE BROKERS LTD.	2011-02-10	5654F	OPTIMIRA ENERGY CANADA, LTD.
2011-02-10	6107F	EVERGREEN ENERGY SERVICES INC.	2011-02-10	54832	PATHWAY MINING/ENERGY 2006 INC.
2011-02-10	6334F	Faithful & Gould, Inc.	2011-02-10	55131	PETROUS INC.
2011-02-10	6613F	FEDERAL CREDIT & CONSULTING CORP.	2011-02-10	3927F	PINDOFF RECORD SALES LIMITED
2011-02-10	55983	FILTRATION PLUS LIMITED	2011-02-10	54884	PLOMBERIE CÔTE-NORD INC.
2011-02-10	52574	FINANCIAL & PROFESSIONAL RISK SOLUTIONS, INC.	2011-02-10	6763F	PREMIER INVESTMENT CORPORATION LIMITED
2011-02-10	52924	FINAVERA ENERGY CANADA INC.	2011-02-10	55587	PROYECTOS WEB IW, C.A.
2011-02-10	50602	FIRST EAST MORTGAGE CENTRE LTD.	2011-02-10	3776F	R B N FISHERIES LIMITED
2011-02-10	4374F	GALLERY RESOURCES LIMITED	2011-02-10	56343	REMINGTON TIRE DISTRIBUTORS INC.
2011-02-10	51201	GROVESHORES LIMITED	2011-02-10	5908F	RETCARE PROPERTIES INC.
2011-02-10	51742	HAPPO FOOD PRODUCTS COMPANY LTD.	2011-02-10	49891	RICHMONT DIRECT CANADA LTD.
2011-02-10	5983F	HOME INTERIORS & GIFTS, INC.	2011-02-10	6802F	ROBERTSON CONSULTING INC.
2011-02-10	53415	INTELLIGENT TRANSACTION SYSTEMS DE MEXICO	2011-02-10	5236F	ROCKFORD CORPORATION
2011-02-10	54824	JOHN A. HARDIE ASSOCIATES LIMITED	2011-02-10	6726F	SAN FRANCISCO GIFTS (ATLANTIC) LIMITED
2011-02-10	55906	JORDAN EWART INSURANCE LIMITED	2011-02-10	53670	SATELLITE CONNECTIONS INC.
2011-02-10	53621	L'IMMOBILIERE GUYANAISE	2011-02-10	4852F	SITEL INSURANCE SERVICES CANADA INC.
2011-02-10	6296F	Lazard Freres & Co. LLC	2011-02-10	54301	SMK SPEEDY INTERNATIONAL INC.
2011-02-10	5445F	LEASEWAY MOTORCAR TRANSPORT CANADA LTD.	2011-02-10	52703	SOFTWARE CAPITAL CORP.
2011-02-10	52707	LIFEWAVE, LLC	2011-02-10	6196F	STEVENSON & HUNT INSURANCE BROKERS (KWC) LIMITED
2011-02-10	53544	MAVRIX EXPLORE 2006 - I FT MANAGEMENT LIMITED	2011-02-10	56449	T. MAYE'S TRUCKING LTD.
			2011-02-10	6340F	T.H.E. INSURANCE COMPANY
			2011-02-10	56284	TAKARA RESOURCES INC.

2011-02-10	6303F	TIRECRAFT AUTO CENTERS LTD.
2011-02-10	6628F	TOPSAILS LLC
2011-02-10	54002	TOWER SOFTWARE CORPORATION
2011-02-10	55825	UNITED STATES WARRANTY CORPORATION
2011-02-10	54394	VIA PEAK INC.
2011-02-10	53237	VIVIAN FINANCIAL PLANNING SERVICES INC.
2011-02-10	6713F	WALDEGRAVE FINANCE LIMITED
2011-02-10	50069	WBLI INCORPORATED
2011-02-10	3019F	WEEKENDERS CANADA INC.
2011-02-10	6653F	WELLS FARGO FINANCIAL CORPORATION/SOCIETE FINANCIERE WELLS FARGO
2011-02-10	53903	WESTON FOODS INC.
2011-02-10	50617	WS ATKINS, INC.

Total Cancellations: 112

DEPARTMENT OF GOVERNMENT SERVICES
Dean Doyle, Registrar of Companies

Apr 8

QUIETING OF TITLES ACT

2011 01G NO. 0214 IN THE SUPREME COURT OF NEWFOUNDLAND AND LABRADOR TRIAL DIVISION (GENERAL)

IN THE MATTER of an Application of FRANK WELLS pursuant to the *Quieting of Titles Act*, cQ-3, RSNL 1990, as amended

AND

IN THE MATTER of that piece or parcel of land situate at North River, in the Province of Newfoundland and Labrador (hereinafter referred to as the "Subject Property")

NOTICE OF APPLICATION, under the *Quieting of Titles Act*, RSNL 1990, cQ-3, as amended.

Notice is hereby given to all parties that FRANK WELLS has applied to the Supreme Court of Newfoundland and Labrador, St. John's, to have the title to ALL THAT piece or parcel of land situate at North River, in the Province of Newfoundland and Labrador and being more particularly described in Schedule "A" hereto annexed and outlined on the plan annexed hereto marked Schedules "B" for which he claims to be the owner, investigated and for a Declaration that he is the absolute owner in fee simple and that he has been ordered to publish notice of the Application as required by the before noted Act.

All persons having title adverse to the said title claimed by FRANK WELLS shall file in the Registry of the Supreme Court of Newfoundland and Labrador, St. John's, in the Province of Newfoundland and Labrador, particulars of such adverse claim and serve the same together with an

Affidavit verifying same on the undersigned Solicitor for the Applicant on or before the 9th day of May, 2011 after which date no party having any claim shall be permitted to file the same or to be heard except by special leave of the Court and subject to such conditions as the Court may deem just.

DATED at Bay Roberts, in the Province of Newfoundland and Labrador, this 29th day of March, 2011.

MORROW & MORROW
Solicitor for the Applicant
PER: John C. Crosbie

ADDRESS FOR SERVICE
P.O. Box 870
Bay Roberts, NL
A0A 1G0
Tel: (709) 786-9207
Fax: (709) 786-9507

SCHEDULE "A"

Metes and bounds description of property surveyed for FRANK WELLS, located at North River in the Electoral District of Harbour Main, Province of Newfoundland and Labrador and is more particularly described as follows:

ALL THAT lot, piece or parcel of land situate to the southeast of North River Road, 20m wide, and northwest of a Reservation, 10m wide, on North River.

BEGINNING at a point, such point being a survey marker located at the northernmost angle of said described land and having NAD83 coordinates of N 5 264 906.626 and E 278 332.790 of the modified three degree transverse mercator projection for the Province of Newfoundland and Labrador;

THENCE running along the property of Cyril Anthony south thirty degrees twenty-three minutes zero seven seconds east (S 30°23'07" E) a distance of two hundred and thirty-three decimal seven five zero meters (233.750m);

THENCE running in an irregular line along said Reservation, 10m wide, on North River a distance of four hundred and seventy-eight decimal seven meters (478.7m), more or less, to a point which bears south sixty-seven degrees eighteen minutes forty-one seconds west (S 67° 18' 41" W) a distance of four hundred and twenty-three decimal six six two meters (423.662m), from the previously described point;

THENCE running along Crown Land north thirty degrees twenty-three minutes zero seven seconds west (N 30° 23' 07"W) a distance of forty decimal two three four meters (40.234m);

THENCE running in an irregular line along said North River Road, 20m wide, a distance of four hundred and fifty decimal nine meters (450.9m), more or less, to a point of

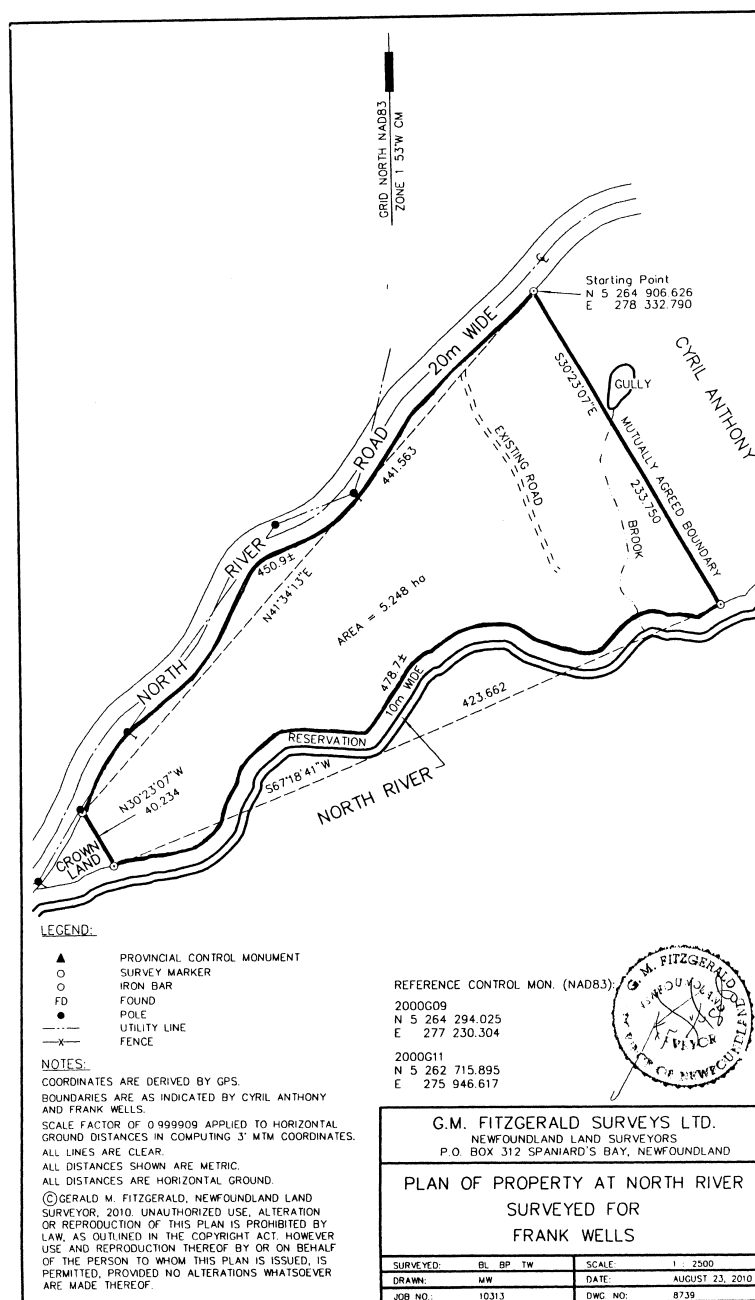
commencement which bears north forty-one degrees thirty-four minutes thirteen seconds east (N 41° 34' 13" E) a distance of four hundred and forty-one decimal five six three meters (441.563m), from the previously described point.

meridian of fifty-three degrees west longitude and the whole parcel containing a calculated area of 5.248 hectares, more or less, and is more particularly shown, outlined in red, on the attached plan.

August 23, 2010

ALL BEARINGS are referenced from the modified three degree transverse mercator projection having a central

SCHEDULE "B"



TRUSTEE ACT

ESTATE NOTICE

IN THE ESTATE of RAYMOND AUCOIN, late of the Community of South Branch, District of St. George's and Stephenville East, Province of Newfoundland and Labrador, Canada, Businessman, deceased

ALL PERSONS claiming to be creditors of, or who have any claims or demands either as beneficiaries or next-of-kin, (by blood, legal adoption or marriage) upon or affecting the Estate of RAYMOND AUCOIN, Businessman, deceased, are hereby requested to send particulars thereof in writing, duly attested, to the undersigned solicitors for the Executor of the Estate of the said deceased on or before the 6th day of May, 2011, after which date the said Executor will proceed to distribute the said Estate having regard only to the claims to which he shall then have had notice.

DATED at the Town of Channel-Port aux Basques, Province of Newfoundland and Labrador, this 29th day of March, 2011.

MARKS & PARSONS
Solicitors for the Executor
PER: M. Beverley L. Marks, Q.C.

ADDRESS FOR SERVICE
P.O. Box 640
174 Caribou Road
Channel-Port aux Basques, NL
A0M 1C0
Tel: (709) 695-7338/7341
Fax: (709) 695-3944

Apr 8

ESTATE NOTICE

IN THE ESTATE of TIMOTHEUS NEUSS, late of Manuels, in the Town of Conception Bay South, in the Province of Newfoundland and Labrador, Retired Businessman, deceased

All persons claiming to be creditors of or who have any claims or demands upon or affecting the Estate of TIMOTHEUS NEUSS, late of Manuels, in the Town of Conception Bay South, in the Province of Newfoundland and Labrador, Retired Businessman, deceased, who died at St. John's, in the Province of Newfoundland and Labrador, on or about the 22nd day of November, 2010, are hereby requested to send particulars thereof in writing, duly attested, to the undersigned solicitors for the Executor of the Estate and Effects of the said deceased on or before the 9th day of May, 2011, after which date the Executor will proceed to distribute the Estate and Effects having regard only to the claims of which he shall then have had notice.

DATED AT St. John's, in the Province of Newfoundland and Labrador, this 29th day of March, 2011.

OTTENHEIMER BAKER
Solicitors for the Executor
PER: Robert B. Andrews, Q.C.

ADDRESS FOR SERVICE
6th Floor, Baine Johnston Centre
10 Fort William Place
P.O. Box 5457
St. John's, NL A1C 5W4
Tel: (709) 570-7330
Fax: (709) 722-9210

Apr 8

ESTATE NOTICE

IN THE ESTATE of MICHAEL WILLIAM QUANN, Late of the Town of Port au Port West, in the Province of Newfoundland and Labrador, deceased: May 27, 2007

All persons claiming to be creditors of or who have any claims or demands upon or affecting the Estate of MICHAEL WILLIAM QUANN, late of the Town of Port au Port West, in the Province of Newfoundland and Labrador, deceased, are hereby requested to send the particulars of the same in writing, duly attested, to the undersigned Solicitor for the Administrator of the Estate on or before the 6th day of May, 2011, after which date the said Administrator will proceed to distribute the said Estate having regard only to the claims of which notice shall have been received.

DATED at Stephenville, Newfoundland and Labrador, this 29th day of March, 2011.

ROXANNE PIKE LAW OFFICE
Solicitor for the Administrator
PER: Roxanne Pike

ADDRESS FOR SERVICE
P.O. Box 272
43 Main Street
Stephenville, NL
A2N 2Z4
Tel: (709) 643-6436
Fax: (709) 643-9343

Apr 8



THE NEWFOUNDLAND AND LABRADOR GAZETTE

PART II

SUBORDINATE LEGISLATION FILED UNDER THE STATUTES AND SUBORDINATE LEGISLATION ACT

Vol. 86

ST. JOHN'S, FRIDAY, APRIL 8, 2011

No. 14

NEWFOUNDLAND AND LABRADOR

REGULATION

NLR 39/11



**NEWFOUNDLAND AND LABRADOR
REGULATION 39/11**

*Newfoundland and Labrador T’Railway
Provincial Park Proclamation (Amendment)
under the
Provincial Parks Act*

(Filed April 5, 2011)

Under the authority of subsection 4(2) of the *Provincial Parks Act*, I make the following Order.

Dated at St. John’s, March 30, 2011.

Ross Wiseman
Minister of Environment and Conservation

ORDER

Analysis

1. Sch. Amdt.

NLR 93/97
as amended

1. The *Newfoundland and Labrador T’Railway Provincial Park Proclamation* is amended by adding at the end of the Schedule the following:

The area described in this Schedule is decreased by removing the following parcel of land:

All that piece or parcel of land situate and being at Grand Falls-Windsor, in the Province of Newfoundland and Labrador, in the Provincial Electoral District of Grand Falls- Windsor-Green Bay South, abutted and bounded as follows:

Beginning at a point which measures 167.767 meters on a bearing of north 82° 17' 34" west from Control Station 95G5144;

Then along Crown Land and property of Thomas Tremblett, No.2 Lincoln Road, north 57° 15' 48" west for 68.718 meters;

Then along the arc of a curve having a radius of 184.099 meters, property of Thomas Tremblett, No.2 Lincoln Road, crossing Lincoln Road and along property of Ultramar Ltd or assigns, to a point which bears north 73° 35' 42" west for a straight line distance of 103.536 meters;

Then along property of Ultramar Ltd. or assigns and along Crown Land, north 89° 55' 35" west for 126.364 meters;

Then along the arc of a curve having a radius of 1780.513 meters, Crown Land, to a point which bears south 89° 06' 59" west for a straight line distance of 59.482 meters;

Then along Crown Land, south 88° 09' 34" west for 59.839 meters;

Then along the arc of a curve having a radius of 520.070 meters, Crown Land, to a point which bears south 74° 42' 59" west for a straight line distance of 241.808 meters;

Then along Crown Land and crossing Mill Access Road, 20 meters wide, south 61° 16' 24" west for 136.664 meters;

Then along Newfoundland and Labrador T'Railway Provincial Park, north 23° 49' 22" west for 30.592 meters;

Then running in the vicinity of Main Street West, north 61° 16' 24" east for 134.049 meters;

Then along the arc of a curve having a radius of 550.550 meters and being in the vicinity of Main Street West, to a point which bears north 74° 42' 59" east for a straight line distance of 255.980 meters;

Then running in the vicinity of Main Street West, north 88° 09' 34" east for 59.839 meters;

Then along the arc of a curve having a radius of 1810.993 meters and being in the vicinity of Main Street West, to a point which bears north 89° 06' 59" east for a straight line distance of 60.501 meters;

Then running in the vicinity of Main Street West, south 89° 55' 35" east for 126.364 meters;

Then along the arc of a curve having a radius of 214.579 meters and being in the vicinity of Main Street West, to a point which bears south 73° 35' 42" east for a straight line distance of 120.678 meters;

Then running in the vicinity of Main Street West, south 57° 15' 48" east for 78.679 meters;

Then running along property of Newfoundland and Labrador T'Railway Provincial Park, south 29° 54' 07" west for 15.898 meters;

Then running along property of Newfoundland and Labrador T'Railway Provincial Park, south 69° 05' 33" west for 18.130 meters to point of beginning.

Containing in all 2.507 hectares.

All bearings are referred to Grid North, Zone 2-NAD83-56°CM.

The area described in this Schedule is increased by adding the following parcel of land:

All that piece or parcel of land situate and being at Grand Falls-Windsor, in the Province of Newfoundland and Labrador, in the Provincial Electoral District of Grand Falls-Windsor-Green Bay South, abutted and bounded as follows:

Beginning at a point which measures 157.712 meters on a bearing of north 84° 00' 39" west from Control Station 95G5144:

Then along Crown Land, south 69° 05' 33" west for 6.625 meters;

Then along the arc of a curve, in a counter clockwise direction, having a radius of 19.628 meters, Crown Land, to a point which bears south $46^{\circ} 06' 42''$ west for a straight line distance of 15.326 meters;

Then along Crown Land, south $23^{\circ} 07' 47''$ west for 79.779 meters;

Then along the arc of a curve, in a clockwise direction, having a radius of 25.296 meters, Crown Land, to a point which bears south $53^{\circ} 06' 57''$ west for a straight line distance of 25.286 meters;

Then along Crown Land, south $83^{\circ} 06' 07''$ west for 26.463 meters;

Then along the arc of a curve, in a clockwise direction, having a radius of 126.440 meters, Crown Land, to a point which bears south $87^{\circ} 47' 25''$ west for a straight line distance of 20.668 meters;

Then along Crown Land, crossing Lincoln Road, 20 meters wide, and along Crown Land, north $87^{\circ} 31' 18''$ west for 100.154 meters;

Then along the arc of a curve, in a counter clockwise direction, having a radius of 90.629 meters, Crown Land, to a point which bears south $86^{\circ} 28' 39''$ west for a straight line distance of 18.950 meters;

Then along Crown Land, south $80^{\circ} 28' 36''$ west for 53.700 meters;

Then along the arc of a curve, in a counter clockwise direction, having a radius of 158.245 meters, Crown Land, to a point which bears south $73^{\circ} 28' 14''$ west for a straight line distance of 38.603 meters;

Then along Crown Land, south $66^{\circ} 27' 52''$ west for 17.639 meters;

Then along the arc of a curve, in a clockwise direction, having a radius of 59.078 meters, Crown Land, to a point which bears south $76^{\circ} 50' 51''$ west for a straight line distance of 21.295 meters;

Then along Crown Land, south $87^{\circ} 13' 49''$ west for 57.916 meters;

Then along the arc of a curve, in a clockwise direction, having a radius of 35.980 meters, Crown Land, to a point which bears north $71^{\circ} 54' 12''$ west for a straight line distance of 25.632 meters;

Then along Crown Land, north $51^{\circ} 02' 14''$ west for 29.000 meters;

Then along the arc of a curve, in a counter clockwise direction, having a radius of 119.814 meters, Crown Land, to a point which bears north $64^{\circ} 36' 17''$ west for a straight line distance of 56.214 meters;

Then along Crown Land, north $78^{\circ} 10' 20''$ west for 49.544 meters;

Then along the arc of a curve, in a clockwise direction, having a radius of 86.762 meters, Crown Land, to a point which bears north $73^{\circ} 18' 30''$ west for a straight line distance 14.713 meters;

Then along Crown Land, north $68^{\circ} 26' 40''$ west for 21.611 meters;

Then along the arc of a curve, in a counter clockwise direction, having a radius of 169.645 meters, Crown Land, to a point which bears north $71^{\circ} 43' 52''$ west for a straight line distance of 19.451 meters;

Then along Crown Land, north $75^{\circ} 01' 03''$ west for 50.472 meters;

Then along the arc of a curve, in a counter clockwise direction, having a radius of 54.185 meters, Crown Land, to a point which bears north $89^{\circ} 21' 19''$ west for a straight line distance of 26.837 meters;

Then along Crown Land, crossing Mill Access Road, 20 meters wide, and along Crown Land, south $76^{\circ} 18' 24''$ west for 82.171 meters;

Then along property of Newfoundland and Labrador T'Railway Provincial Park, north $61^{\circ} 16' 24''$ east for 9.607 meters;

Then along property of Newfoundland and Labrador T'Railway Provincial Park, north $23^{\circ} 49' 22''$ west for 6.611 meters;

Then crossing Mill Access Road, 20 meters wide, and along Crown Land, north $76^{\circ} 18' 24''$ east for 74.056 meters;

Then along the arc of a curve, in a clockwise direction, having a radius of 63.185 meters, Crown Land, to a point which bears south $89^{\circ} 21' 20''$ east for a straight line distance of 31.294 meters;

Then along Crown Land, south $75^{\circ} 01' 03''$ east for 50.472 meters;

Then along the arc of a curve, in a clockwise direction, having a radius of 178.645 meters, Crown Land, to a point which bears south $71^{\circ} 43' 52''$ east for a straight line distance of 20.483 meters;

Then along Crown Land, south $68^{\circ} 26' 40''$ east for 21.611 meters;

Then along the arc of a curve, in a counter clockwise direction, having a radius of 77.762 meters, Crown Land, to a point which bears south $73^{\circ} 18' 30''$ east for a straight line distance of 13.187 meters;

Then along Crown Land, south $78^{\circ} 10' 20''$ east for 49.545 meters;

Then along the arc of a curve, in a clockwise direction, having a radius of 128.814 meters, Crown Land, to a point which bears south $64^{\circ} 36' 16''$ east for a straight line distance of 60.436 meters;

Then along Crown Land, south $51^{\circ} 02' 14''$ east for 29.000 meters;

Then along the arc of a curve, in a counter clockwise direction, having a radius of 26.980 meters, Crown Land, to a point which bears south $71^{\circ} 54' 12''$ east for a straight line distance of 19.220 meters;

Then along Crown Land, north $87^{\circ} 13' 49''$ east for 57.916 meters;

Then along the arc of a curve, in a counter clockwise direction, having a radius of 50.078 meters, Crown Land, to a point which bears north $76^{\circ} 50' 51''$ east for a straight line distance of 18.050 meters;

Then along Crown Land, north $66^{\circ} 27' 52''$ east for 17.639 meters;

Then along the arc of a curve, in a clockwise direction, having a radius of 167.245 meters, Crown Land, to a point which bears north $73^{\circ} 28' 14''$ east for a straight line distance of 40.799 meters;

Then along Crown Land, north $80^{\circ} 28' 36''$ east for 53.700 meters;

Then along the arc of a curve, in a clockwise direction, having a radius of 99.629 meters, Crown Land, to a point which bears north $86^{\circ} 28' 39''$ east for a straight line distance of 20.831 meters;

Then along Crown Land, crossing Lincoln Road, 20 meters wide, and along Crown Land, south $87^{\circ} 31' 18''$ east for 100.154 meters;

Then along the arc of a curve, in a counter clockwise direction, having a radius of 117.440 meters, Crown Land, to a point which bears north $87^{\circ} 47' 25''$ east for a straight line distance of 19.197 meters;

Then along Crown Land, north $83^{\circ} 06' 07''$ east for 26.463 meters;

Then along the arc of a curve, in a counter clockwise direction, having a radius of 16.296 meters, Crown Land, to a point which bears north $53^{\circ} 06' 57''$ east for a straight line distance of 16.289 meters;

Then along Crown Land, north $23^{\circ} 07' 47''$ east for 79.779 meters;

Then along the arc of a curve, in a clockwise direction, having a radius of 28.628 meters, Crown Land, to a point which bears north $46^{\circ} 06' 40''$ east for a straight line distance of 22.354 meters;

Then along Newfoundland and Labrador T'Railway Provincial Park, south $57^{\circ} 15' 48''$ east for 11.175 meters to point of beginning.

Reserving nevertheless out of the above described parcel of land a portion of Lincoln Road, 20 meters wide, and a portion of Mill Access Road, 20 meters wide, as shown on the plan on file with the minister.

Containing in all 0.728 hectares:

Note: the above described parcel of land being subject to a utility easement as shown on the plan on file with the minister.

All bearings are referred to Grid North, Zone 2-NAD83-56°CM.

©William E. Parsons, Queen's Printer

Index

PART I

Corporations Act – Notices	121
Quieting of Titles Act– Notice.....	128
Trustee Act– Notices	130

PART II

CONTINUING INDEX OF SUBORDINATE LEGISLATION

Title of Act and Subordinate Legislation made thereunder	CNLR or NL Reg.	Amendment	NL Gazette Date & Page No.
Provincial Parks Act			
Newfoundland and Labrador T’Railway Provincial Park Proclamation (Amdt.)	NLR 39/11	NLR 93/97 Sch. Amdt	Apr 8/11 p. 147

The Newfoundland and Labrador Gazette is published from the office of William E. Parsons, Queen's Printer.

Copy for publication must be received before **Friday, 4:30 p.m.**, seven days before publication, to ensure inclusion in next issue.

Advertisements should be typewritten or printed legibly, separate from covering letter. Number of insertions required must be stated and the names of all signing officers typewritten or printed.

Copy may be mailed to the address below, faxed to (709) 729-1900 or emailed to queensprinter@gov.nl.ca.

Advertising rates are available upon request. Subscription rate for *The Newfoundland and Labrador Gazette* is \$125.00 for 52 weeks plus applicable tax (\$131.25). Weekly issues of \$3.00 per copy, plus tax payable in advance.

All cheques, money orders, etc., should be made payable to THE NEWFOUNDLAND EXCHEQUER ACCOUNT and all correspondence should be addressed to: Office of the Queen's Printer, P. O. Box 8700, Ground Floor, East Block, Confederation Building, St. John's, NL A1B 4J6. Telephone (709) 729-3649. Fax: (709) 729-1900.

Web Site: <http://www.gs.gov.nl.ca/printer/index.html>

**Place your order by contacting:
Office of The Queen's Printer
Confederation Building, East Block
St. John's, NL A1B 4J6
Telephone: (709) 729-3649 Fax: (709) 729-1900
email: queensprinter@gov.nl.ca**

**Government Information Product
Publication Rate Mail
G.S.T. # R107442683**

All requests for Subscription and Legislation MUST be prepaid.