



# THE NEWFOUNDLAND AND LABRADOR GAZETTE

## PART I

### PUBLISHED BY AUTHORITY

---

Vol. 86

ST. JOHN'S, FRIDAY, NOVEMBER 18, 2011

No. 46

---

### ELECTIONS ACT, 1991

#### NOTICE

UNDER the Authority of Section 163 of the *Elections Act, 1991*, cE-3.1, the following information is provided.

DATED at St. John's, this 10<sup>th</sup> day of November, 2011.

VICTOR POWERS  
Chief Electoral Officer

# 2011 PROVINCIAL GENERAL ELECTION REPORT

Under the authority of Section 163 of the *Elections Act, 1991*, the following information is provided.

Dated at St. John's this 10<sup>th</sup> day of November, 2011

Victor Powers, Chief Electoral Officer

No.	Electoral District	Name of Candidate	Party Affiliation (if any)	No. of Votes Cast for Each Candidate	Total No. Ballots Rejected	Total No. Votes Cast	Total No. Ballots Cancelled *	No. of Electors on Revised Permanent List	Candidate Elected
7.	Burin - Placentia West	JACKMAN, Clyde MITCHELL, Julie MULLETT, Jackie	PC NDP LIB	2538 2498 202	12	5250	5	7591	JACKMAN, Clyde

\* Cancelled ballots are not included in the Total Number of Votes Cast.

## MINERAL ACT

### NOTICE

Published in accordance with section 62 of CNLR 1143/96 under the *Mineral Act*, cM-12, RSNL 1990 as amended.

Mineral rights to the following mineral licenses have reverted to the Crown:

A portion of license 008217M  
Held by Noel, E. Michele  
Situates near Southern Pond, Baie Verte Peninsula  
On map sheet 12H/16  
more particularly described in an application on file at Department of Natural Resources

Mineral License 011143M  
Held by Murphy, Noel G.  
Situates near Simms Ridge, White Bay Area  
On map sheet 12H/10

Mineral License 011145M  
Held by Murphy, Noel G.  
Situates near Simms Ridge, White Bay Area  
On map sheet 12H/10

Mineral License 012569M  
Held by Messina Minerals Inc.  
Situates near Costigan Lake, Central NL  
On map sheet 12A/07 12A/06 12A/10 12A/11

Mineral License 013699M  
Held by Ashini, Jean Pierre  
Situates near Goose River  
On map sheet 13E/09

Mineral License 013700M  
Held by Rich, Raphael  
Situates near Goose River  
On map sheet 13E/09

Mineral License 013708M  
Held by Benton Resources Corp.  
Situates near Kinguritik Lake  
On map sheet 14D/16

Mineral License 015525M  
Held by Capella Resources Ltd.  
Situates near Pocketknife Lake  
On map sheet 13K/06

Mineral License 015258M  
Held by Fraser, Dean  
Situates near Kings Point, Central NL  
On map sheet 12H/09

Mineral License 016018M  
Held by Eagleridge Minerals Ltd.  
Situates near Otter Island, Central NL  
On map sheet 02E/12

Mineral License 016020M  
Held by Eagleridge Minerals Ltd.  
Situates near Little Ward Harbour, Central NL  
On map sheet 02E/12

Mineral License 016349M  
Held by Melbourne, Augustus

Situates near Grandy Brook, Southern NL  
On map sheet 11P/12

Mineral License 016365M  
Held by Moore, Barry  
Situates near Conception Harbour, Avalon Peninsula  
On map sheet 01N/06

Mineral License 016371M  
Held by Kendell, Colin Albert  
Situates near Little River Area, Southern NL  
On map sheet 01M/13

A portion of license 016926M  
Held by Alterra Resources Inc.  
Situates near Alexis River  
On map sheet 13A/14  
more particularly described in an application on file at Department of Natural Resources

A portion of license 016930M  
Held by Alterra Resources Inc.  
Situates near Alexis River  
On map sheet 13A/10 13A/11 13A/15 13A/14  
more particularly described in an application on file at Department of Natural Resources

A portion of license 016931M  
Held by Alterra Resources Inc.  
Situates near Alexis River  
On map sheet 13A/11  
more particularly described in an application on file at Department of Natural Resources

A portion of license 016933M  
Held by Alterra Resources Inc.  
Situates near Alexis River  
On map sheet 13A/10  
more particularly described in an application on file at Department of Natural Resources

A portion of license 016934M  
Held by Alterra Resources Inc.  
Situates near Alexis River  
On map sheet 13A/10  
more particularly described in an application on file at Department of Natural Resources

A portion of license 016938M  
Held by Alterra Resources Inc.  
Situates near Alexis River  
On map sheet 13A/10 13A/11  
more particularly described in an application on file at Department of Natural Resources

A portion of license 016947M  
Held by Alterra Resources Inc.  
Situates near Alexis River  
On map sheet 13A/10  
more particularly described in an application on file at Department of Natural Resources

A portion of license 017335M  
Held by Alterra Resources Inc.  
Situates near Alexis River  
On map sheet 13A/10 13A/11  
more particularly described in an application on file at Department of Natural Resources

THE NEWFOUNDLAND AND LABRADOR GAZETTE  
November 18, 2011

A portion of license Held by Situates near On map sheet more particularly described in an application on file at Department of Natural Resources	017339M Alterra Resources Inc. Alexis River 13A/10	Situates near On map sheet	Pinware River 12P/15
Mineral License Held by Situates near On map sheet	017711M Yeomans, William Buchans Junction Area, Central NL 12A/16	Mineral License Held by Situates near On map sheet	017855M Chafe, Paul Rexons Island 03D/12
Mineral License Held by Situates near On map sheet	017830M Noel, E. Michele Northwest Gander River, Central NL 02D/11	Mineral License Held by Situates near On map sheet	017857M 10565 Nfld Inc Crooks Lake 13B/11
Mineral License Held by Situates near On map sheet	017831M Jacobs, Daniel Coachmans Harbour, Baie Verte Peninsula 12I/01	Mineral License Held by Situates near On map sheet	017866M Alterra Resources Inc. St Lewis Inlet 13A/08
Mineral License Held by Situates near On map sheet	017840M Michelin, Richard Hamilton River 13F/04	Mineral License Held by Situates near On map sheet	017867M Alterra Resources Inc. St Lewis Inlet 13A/08
Mineral License Held by Situates near On map sheet	017843M Lannon, George Nippers Harbour, Baie Verte Peninsula 02E/13	Mineral License Held by Situates near On map sheet	017868M Alterra Resources Inc. St Lewis Inlet 13A/08
Mineral License Held by Situates near On map sheet	017845M Unity Resources Inc. Jonathans Pond, Central NL 02E/02	Mineral License Held by Situates near On map sheet	017872M Freeman, Robert Ghost Pond, Central NL 02E/05
Mineral License Held by Situates near On map sheet	017846M Altius Resources Inc. East of Kaipokok Bay 13K/09	Mineral License Held by Situates near On map sheet	017873M Freeman, Robert Musgravetown, Eastern NL 02C/05
Mineral License Held by Situates near On map sheet	017847M Altius Resources Inc. East of Kaipokok Bay 13K/08 13K/09	Mineral License Held by Situates near On map sheet	017874M 2106567 Ontario Inc. Letitia Lake 13L/02
Mineral License Held by Situates near On map sheet	017848M Altius Resources Inc. East of Kaipokok Bay 13K/08 13K/09 13J/12	Mineral License Held by Situates near On map sheet	017877M Freeman, Robert Southern Harbour, Avalon Peninsula 01N/12
Mineral License Held by Situates near On map sheet	017851M Chafe, Paul St. Lewis River 13A/06	Mineral License Held by Situates near On map sheet	017879M Coady, Craig Gordon Traverspine River 13F/02 13F/01
Mineral License Held by Situates near On map sheet	017852M Chafe, Paul St. Lewis River 13A/06	Mineral License Held by Situates near On map sheet	017880M Coady, Craig Gordon Cape Caribou River Area 13F/07 13F/10
Mineral License Held by Situates near On map sheet	017853M Unity Resources Inc. Chateau Bay 02M/13	The lands covered by this notice except for the lands within Exempt Mineral Lands, the Exempt Mineral Lands being described in CNLR 1143/96 and NLR 71/98, 104/98, 97/00, 36/01, 31/04, 78/06, 8/08 and 28/09 and outlined on 1:50 000 scale digital maps maintained by the Department of Natural Resources, will be open for staking after the hour of 9:00 a.m. on the 32 <sup>nd</sup> clear day after the date of this publication.	
Mineral License Held by	017854M Altius Resources Inc.		

DEPARTMENT OF NATURAL RESOURCES  
JIM HINCHEY, P.Geo  
Manager - Mineral Rights

File #'s 774:4398, 6236, 6238, 7464, 8522, 8523, 8531, 8716, 9821; 775:0202, 0204, 0322, 0331, 0333, 0666, 0670, 0671, 0673, 0674, 0677, 0687, 0891, 0895, 1148, 1246, 1247, 1256, 1259, 1261, 1262, 1263, 1264, 1270, 1271, 1272, 1273, 1274, 1276, 1283, 1284, 1285, 1288, 1289, 1290, 1292, 1294, 1295

Nov 18

---

### **CORPORATIONS ACT**

IN THE MATTER of the *Corporations Act*, RSNL 1990, cC-36 (the "Act")

AND

In the Matter of Better Business Bureau of Newfoundland and Labrador Limited, in voluntary dissolution

### **NOTICE**

Take notice that following receipt of a Statement of Intent to Dissolve, dated the 3<sup>rd</sup> day of November, the Registrar of Corporations (NL) has issued a Certificate of Intent to Dissolve, which Certificate is dated the 4<sup>th</sup> day of November, 2011.

And further take notice that in accordance with the Act, all of the undertaking properties, assets and liabilities of the Corporation shall now be distributed and discharged.

Accordingly, all persons claiming to be creditors of or have any claims or demands upon or affecting the Corporation, in voluntary dissolution, and who have not otherwise been notified and satisfactorily dealt with in this transaction to date are requested to send particulars of such demand to the undersigned Solicitors on or before the 10<sup>th</sup> day of December, 2011.

Dated at St. John's, Newfoundland and Labrador, Canada, this 10<sup>th</sup> day of November, 2011.

OTTENHEIMER BAKER  
Solicitors for the Corporation  
PER: Christian J. Hurley

ADDRESS FOR SERVICE:  
6<sup>th</sup> Floor, Baine Johnston Centre  
10 Fort William Place  
St. John's, NL A1C 5W4

Tel: (709) 570-7315  
Fax: (709) 722-9210

Nov 18

---

### **URBAN AND RURAL PLANNING ACT, 2000**

#### **NOTICE OF REGISTRATION TOWN OF MARYSTOWN MUNICIPAL PLAN AMENDMENT NO. 17, 2011 AND DEVELOPMENT REGULATIONS AMENDMENT NO. 25, 2011**

TAKE NOTICE that the TOWN OF MARYSTOWN Municipal Plan Amendment No. 17, 2011 and Development Regulations Amendment No. 25, 2011 as adopted on the 6<sup>th</sup> day of September, 2011 and approved on the 4<sup>th</sup> day of October, 2011, have been registered by the Minister of Municipal Affairs.

In general terms the purpose of the Municipal Plan Amendment No. 17 and Development Regulations Amendment No. 25 is to enable the development of a residential property off Hodders Road by redesignating and rezoning it from Rural to Residential, and the extension of the residential area along Highway 210 along the shoreline of Mortier Bay by redesignating and rezoning the area from Rural to Residential.

The Municipal Plan Amendment No. 17, 2011 and Development Regulations Amendment No. 25, 2011 come into effect on the day that this notice is published in *The Newfoundland and Labrador Gazette*.

Anyone who wishes to inspect a copy of the Marystown Municipal Plan Amendment No. 17, 2011 and Development Regulations Amendment No. 25, 2011 may do so at the Marystown Town Office during normal working hours.

TOWN OF MARYSTOWN  
Dennis Kelly, Town Clerk

Nov 18

---

#### **NOTICE OF REGISTRATION TOWN OF PARADISE MUNICIPAL PLAN AMENDMENT NO. 20, 2011 AND DEVELOPMENT REGULATIONS AMENDMENT No. 53, 2011**

TAKE NOTICE that the TOWN OF PARADISE Municipal Plan Amendment No. 20, 2011 and Development Regulations Amendment No. 53, 2011, adopted on the 20<sup>th</sup> of September 2011, and approved on the 5<sup>th</sup> day of October 2011, have been registered by the Minister of Municipal Affairs.

In general terms, the purpose of Municipal Plan Amendment No. 20, 2011 is to re-designate a parcel of land on Pollard Avenue from Open Space Recreation to Industrial General. Development Regulations Amendment No. 53, 2011 re-zones the same parcel from Open Space Recreation (OSR) to Industrial General (IG). The changes

have been undertaken to accommodate expansion of the Octagon Industrial Park.

The Municipal Plan and Development Regulations Amendments come into effect on the day that this notice is published in *The Newfoundland and Labrador Gazette*. Anyone who wishes to inspect a copy of Municipal Plan Amendment No. 20, 2011 and Development Regulations Amendment No. 53, 2011, may do so at the Paradise Town Hall, 28 McNamara Drive, during normal hours of operation.

TOWN OF PARADISE  
Melanie Bartlett  
Planning and Protective Services Department

Nov 18

---

**NOTICE OF REGISTRATION  
TOWN OF ST. LAWRENCE  
MUNICIPAL PLAN  
AMENDMENT NO. 1, 2011 AND  
DEVELOPMENT REGULATIONS  
AMENDMENT NO. 1, 2011**

TAKE NOTICE that the TOWN OF ST. LAWRENCE Municipal Plan Amendment No. 1, 2011 and Development Regulations Amendment No. 1, 2011 adopted on the 21<sup>st</sup> day of September, 2011 and approved on the 18<sup>th</sup> day of October, 2011, have been registered by the Minister of Municipal Affairs.

The general purpose of these amendments is to accommodate a residential subdivision in an area adjacent the hospital and extending toward the Burin Peninsula Highway by redesignating the area from Rural and Institutional to Residential, and rezoning it from Rural and Institutional-Medical to Residential Medium Density.

The Municipal Plan Amendment No. 1, 2011, and Development Regulations Amendment No. 1, 2011 come into effect on the day that this notice is published in *The Newfoundland and Labrador Gazette*.

Anyone who wishes to inspect a copy of the St. Lawrence Municipal Plan Amendment No. 1, 2011 and Development Regulations Amendment No. 1, 2011 may do so at the St. Lawrence Town Office during normal working hours.

TOWN OF ST. LAWRENCE  
Greg Quirke, Town Clerk

Nov 18

---

**LANDS ACT  
NOTICE OF INTENT  
LANDS ACT, c36, SNL 1991**

Notice is hereby given that Newfoundland Aqua Service Limited (NAS) of St. Alban's, NL intends to apply to the Department of Environment and Conservation, two months

from the publication of this Notice, to acquire title, pursuant to Section 7(2) of the said Act, to that piece of Crown Land situated within fifteen (15) metres of the waters of St. Alban's Barasway, in the Electoral District of Fortune Bay – Cape LaHune for the purpose of an access road to old sawmill site and being more particularly described as follows:

*Bounded on the North by St. Alban's Harbour  
for a distance of 194 m;  
Bounded on the East by N.A.S. and Aliant  
for a distance of 194 m;  
Bounded on the South by the  
Town of St. Alban's and N.A.S.  
for a distance of 40 m;  
Bounded on the West by St. Alban's Harbour  
for a distance of 50 m;  
and containing an area of  
approximately square 700 metres.*

Any person wishing to object to the application must file the objection, in writing, within one month from the publication of this Notice, with reasons for it, to the Minister of Environment and Conservation, and mail to the nearest Regional Lands Office:

c/o Eastern Regional Lands Office, P.O. Box 8700, 5 Mews Place, St. John's, NL, A1B 4J6.

c/o Central Regional Lands Office, P.O. Box 2222, Gander, NL, A1V 1L7.

c/o Western Regional Lands Office, P.O. Box 2006, Noton Building, Corner Brook, NL, A2H 6J8.

c/o Labrador Regional Lands Office, P.O. Box 3014, Station "B", Happy Valley-Goose Bay, NL, A0P 1E0.

For further information on the proposed application, please contact: BOYD PACK, Telephone Number (709) 538-3190.

Nov 18

---

**QUIETING OF TITLES ACT  
2011 01G 4361  
IN THE SUPREME COURT OF  
NEWFOUNDLAND AND LABRADOR  
TRIAL DIVISION (GENERAL)**

NOTICE OF APPLICATION under the *Quieting of Titles Act*, RSNL 1990 cQ-3, as amended;

**NOTICE**

NOTICE is hereby given to all parties that BOLT VENTURES CORP. a body corporate, duly organized and existing pursuant to the laws of the Province of Newfoundland and Labrador has applied to the Supreme Court of Newfoundland and Labrador to have title to ALL THAT piece or parcel of land, more particularly described in Schedule "A" hereto attached, of which the said BOLT

VENTURES CORP, claims to be the owner, as of and only on the date of February 22<sup>nd</sup>, 2005 was the absolute owner in fee simple in possession on the date of February 22<sup>nd</sup>, 2005, and the said BOLT VENTURES CORP. has been ordered to publish Notice of Application as required by the above named Act.

All persons having title adverse to the said title claim by the said BOLT VENTURES CORP. on the date of February 22<sup>nd</sup>, 2005 shall file in the Registry of the Supreme Court of Newfoundland and Labrador, particulars of such adverse claim and serve the same together with an Affidavit verifying the same on the undersigned Solicitors for the Applicant on or before the 23<sup>rd</sup> day of December, 2011, after which date no party having any claims shall be permitted to file the same or to be heard except by special leave of the Court and subject to such conditions as the Court may deem just. All such adverse claims shall then be investigated in such manner as the Court may direct.

DATED at the Town of Conception Bay South, in the Province of Newfoundland and Labrador, this 9<sup>th</sup> day of November, 2011.

C.B.S. LEGAL SERVICES  
Solicitors for the Applicant  
PER: Randell L. Wellon

ADDRESS FOR SERVICE  
565 Conception Bay Highway  
P.O. Box 17004, Stn Kelligrews  
Kelligrews, Conception Bay South, NL  
A1X 3H1

Tel: (709) 834-8600  
Fax: (709) 834-8603

#### **SCHEDULE "A"**

ALL THAT piece or parcel of land situate, lying and being on the southwest side of Paradise Road, in the town of Paradise, in the province of Newfoundland and Labrador, Canada and being more particularly described as follows, that is to say:

BEGINNING at a point, said point being a placed iron pin set in the southwestern limit of Paradise Road and having co-ordinates of North 5 266,648.890 metres and East 314, 328.120 metres of the modified three degree transverse Mercator projection (Zone 1, NAD 83) for the province of Newfoundland and Labrador, Canada.

THENCE running along the aforementioned southwestern limit of Paradise Road S 56°37' 30" E a distance of 78.840 metres;

THENCE running by land of Leonard Spurrell (141 Paradise Road, Roll 372 Frame 48, Registry of Deeds for Newfoundland and Labrador) S 48° 11' 00" W a distance of 61.160 metres;

THENCE running S 50° 38' 49" E a distance of 28.640 metres;

THENCE running by land of Vera Squires (Roll 2368 Frame 1192 Registry of Deeds for Newfoundland and Labrador) S 48° 54' 42" W a distance of 43.990 metres;

THENCE running by land of Robert Halleran (Volume 2773 Folio 492 Registry of Deeds for Newfoundland and Labrador) S 48° 05' 39" W a distance of 224.599 metres;

THENCE running by land, now or formerly, of one Janes N 30° 31' 44" W a distance of 42.405 metres;

THENCE running N 30° 54' 23" W a distance of 34.840 metres;

THENCE running by land now or formerly, of Crosbie Clarke N 30° 37' 18" W a distance of 30.480 metres;

THENCE running along the northeastern limit Inwood Crescent (Privately Owned) N 64° 48' 50" E a distance of 0.586 metres;

THENCE running N 50° 37' 55" E a distance of 77.583 metres;

THENCE running N 50° 13' 35" E a distance of 39.560 metres;

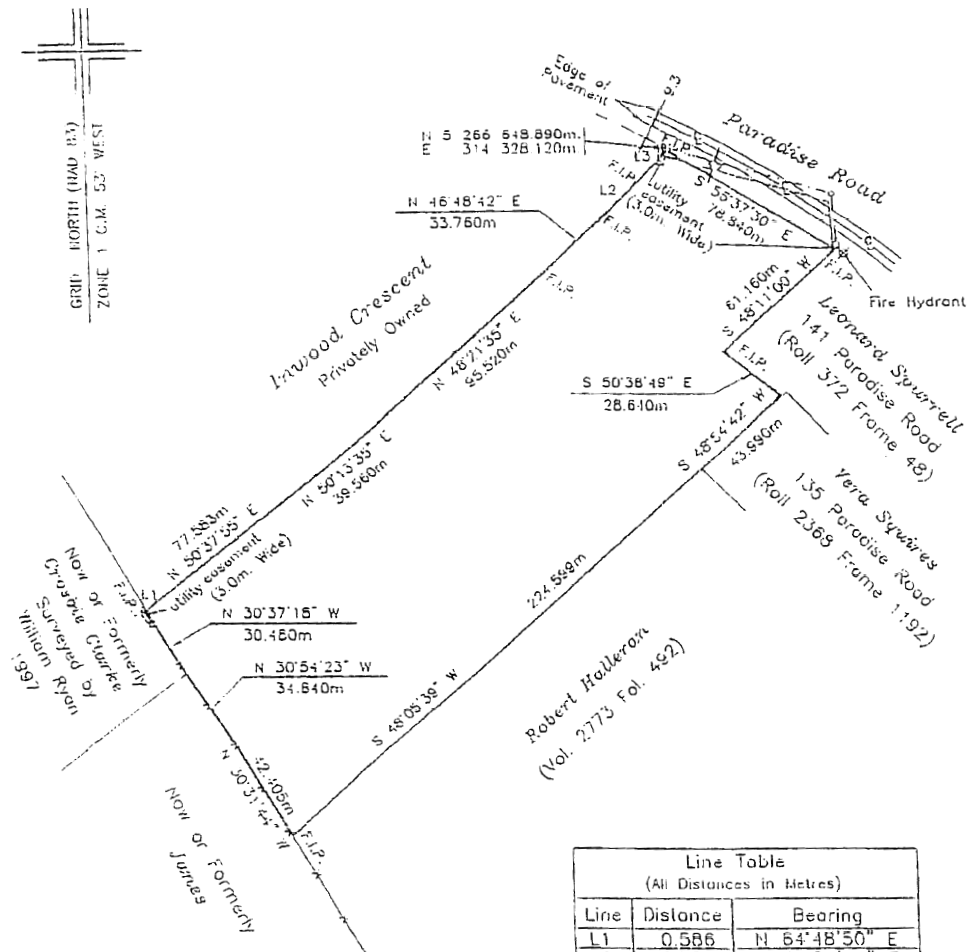
THENCE running N 48° 21' 35" E a distance of 95.520 metres;

THENCE running N 46° 48' 42" E a distance of 33.760 metres;

THENCE running N 44° 24' 11" E a distance of 20.320 metres;

THENCE running N 42° 41' 36" E a distance of 17.311 metres, more or less, in the iron pin set at the principal Point of Beginning. The above described piece or parcel of land contains an area of 2.973 hectares, the same being more particularly described and delineated in red on the drawing hereto attached. All bearings refer to Grid North (NAD 83).

The said property is subject to utility easements as indicated on the attached plan.



Reference Monuments (NAD83) GPS  
5353205 N ± 267 091.827 E 313 551.361

Area = 2.973 ha

— — — — — Fence Line  
F.P. — Fence Post  
S.F.P. — Steel Fence Post  
— — — — — Utility Line  
— — — — — Pole  
— — — — — Guy Wire  
Iron Pins at all Corners  
F.I.P. — Found Iron Pin  
All Distances are Horizontal Ground Distances and Metric.  
Scale Factor of 0.999875 used in co-ordinate computations

©Aubrey K. Burt, Mfld. Land Surveyor, 2004  
Unauthorized use, alteration or reproduction  
of this Survey plan and/or the accompanying  
Survey Description is prohibited by law as  
outlined in the copyright act.  
However, use and reproduction thereof  
by or on behalf of the person to whom this  
plan is certified is permitted, provided that no  
alterations are made thereto.



Aubrey K. Burt Surveys Ltd. Newfoundland Land Surveyor

74 O'Leary Avenue  
P.O. Box 28071, St. John's, NF, A1B 4J8  
Email: aubrey@akbsurveysors.nf.net

St. John's: (709) 738-3363  
Facsimile: (709) 738-3364  
Website: www.akbsurveysors.nf.net

Client: Central Service Station Ltd.

Location: Civic 143-151, Paradise Road, Paradise, NL.

Scale: 1 : 2000

Date: June 08, 2004

Surveyed By: A.B. & S.B.

Job No.: 2004-155





# THE NEWFOUNDLAND AND LABRADOR GAZETTE

## PART II

### SUBORDINATE LEGISLATION

### FILED UNDER THE STATUTES AND SUBORDINATE LEGISLATION ACT

---

Vol. 86

ST. JOHN'S, FRIDAY, NOVEMBER 18, 2011

No. 46

---

### NEWFOUNDLAND AND LABRADOR REGULATION

NLR 101/11





**NEWFOUNDLAND AND LABRADOR  
REGULATION 101/11**

*Regional Service Boards Remuneration and  
Reimbursement Regulations*  
under the  
*Regional Service Boards Act*  
(O.C. 2011-257)

*(Filed November 15, 2011)*

Under the authority of section 39 of the *Regional Service Boards Act*, the Lieutenant-Governor in Council makes the following regulations.

Dated at St. John's, November 9, 2011.

Robert Thompspon  
Clerk of the Executive Council

**REGULATIONS**

*Analysis*

- |                |                                   |
|----------------|-----------------------------------|
| 1. Short title | 2. Remuneration and reimbursement |
|----------------|-----------------------------------|

Short title

**1.** These regulations may be cited as the *Regional Service Boards Remuneration and Reimbursement Regulations*.

Remuneration and reimbursement

**2.** (1) The scale of remuneration for chairpersons and other members or officers of a regional service board shall be in accordance with

Level I of the Guidelines for Rates of Remuneration for Boards, Commissions and Agencies as set by the Public Service Secretariat.

(2) Reimbursement for expenses for members of boards shall be in accordance with the Executive Travel Rules established by the Public Service Secretariat.

**©William E. Parsons, Queen's Printer**

## Index

### PART I

Corporations Act– Notice .....	393
Elections Act, 1991– Notice .....	389
Lands Act– Notice .....	394
Mineral Act– Notice .....	391
Quieting of Titles Act – Notice .....	394
Urban and Rural Planning Act, 2000 – Notices .....	393

### PART II

#### CONTINUING INDEX OF SUBORDINATE LEGISLATION

Title of Act and Subordinate Legislation made thereunder	CNLR or NL Reg.	Amendment	NL Gazette Date & Page No.
<b>Regional Service Boards Act</b>			
Regional Service Boards Remuneration and Reimbursement Regulations	NLR 101/11	New	Nov 18/11 p. 703

*The Newfoundland and Labrador Gazette* is published from the office of William E. Parsons, Queen's Printer.

Copy for publication must be received by **Friday, 4:30 p.m.**, seven days before publication date to ensure inclusion in next issue.

Advertisements must be submitted in either PDF format or as a MSWord file. When this is not possible, advertisements must be either typewritten or printed legibly, separate from covering letter. Number of insertions required must be stated and the names of all signing officers typewritten or printed.

Copy may be mailed to the address below, faxed to (709) 729-1900 or emailed to [queensprinter@gov.nl.ca](mailto:queensprinter@gov.nl.ca).

Advertising rates are available upon request. Subscription rate for *The Newfoundland and Labrador Gazette* is \$125.00 for 52 weeks plus applicable tax (\$131.25). Weekly issues of \$3.00 per copy, plus tax payable in advance.

All cheques, money orders, etc., should be made payable to THE NEWFOUNDLAND EXCHEQUER ACCOUNT and all correspondence should be addressed to: Office of the Queen's Printer, P. O. Box 8700, Ground Floor, East Block, Confederation Building, St. John's, NL A1B 4J6. Telephone (709) 729-3649. Fax: (709) 729-1900.

**Web Site:** <http://www.gs.gov.nl.ca/printer/index.html>

**Place your order by contacting:  
Office of The Queen's Printer  
Confederation Building, East Block  
St. John's, NL A1B 4J6  
Telephone: (709) 729-3649 Fax: (709) 729-1900  
email: [queensprinter@gov.nl.ca](mailto:queensprinter@gov.nl.ca)**

**Government Information Product  
Publication Rate Mail**

**G.S.T. # R107442683**

**All requests for Subscription and Legislation MUST be prepaid.**