



THE NEWFOUNDLAND AND LABRADOR GAZETTE

PART I

PUBLISHED BY AUTHORITY

Vol. 87	ST. JOHN'S, FRIDAY, JANUARY 27, 2012	No. 4
---------	--------------------------------------	-------

MINERAL ACT

NOTICE

Published in accordance with section 62 of CNLR 1143/96 under the *Mineral Act*, cM-12, RSNL 1990 as amended.

Mineral rights to the following mineral licenses have reverted to the Crown:

Mineral License	016964M
Held by	Rare Element Resources Ltd.
Situate near	Flowers Bay West
On map sheet	13N/11

Mineral License	016965M
Held by	Rare Element Resources Ltd.
Situate near	Flowers Bay West
On map sheet	13N/11

Mineral License	016966M
Held by	Rare Element Resources Ltd.
Situate near	Flowers Bay West
On map sheet	13N/11

Mineral License	016967M
Held by	Rare Element Resources Ltd.
Situate near	Flowers Bay West
On map sheet	13N/11

Mineral License	012759M
Held by	Vale Canada Limited
Situate near	Kogaluk River
On map sheet	14C/04

Mineral License	012762M
Held by	Vale Canada Limited
Situate near	Kogaluk River
On map sheet	14C/04

Mineral License	012763M
Held by	Vale Canada Limited
Situate near	Kogaluk River
On map sheet	14C/04

Mineral License	016968M
Held by	Rare Element Resources Ltd.
Situate near	Flowers Bay West
On map sheet	13N/11

Mineral License	012769M
Held by	Benton Resources Corp.
Situate near	Iglusuataliksuak Lake
On map sheet	14D/16

Mineral License	012774M
Held by	Teck Resources Limited
Situate near	Iglusuataliksuak Lake
On map sheet	14D/16

THE NEWFOUNDLAND AND LABRADOR GAZETTE
January 27, 2012

Mineral License Held by Situates near On map sheet	016969M Rare Element Resources Ltd. Flowers Bay West 13N/11	Mineral License Held by Situates near On map sheet	012819M Bayswater Uranium Corp. Makkovik River 13J/14
A portion of license Held by Situates near On map sheet more particularly described in an application on file at Department of Natural Resources	012787M Ucore Rare Metals Inc. Makkovik River 13J/14	Mineral License Held by Situates near On map sheet	012832M Ucore Rare Metals Inc. Makkovik River 13J/14
Mineral License Held by Situates near On map sheet	012790M Ucore Rare Metals Inc. Makkovik River 13J/14	A portion of license Held by Situates near On map sheet more particularly described in an application on file at Department of Natural Resources	017095M Spruce Ridge Resources Ltd Taylor Brook, White Bay 12H/10 12H/11
Mineral License Held by Situates near On map sheet	012793M Ucore Rare Metals Inc. Makkovik River 13J/14	A portion of license Held by Situates near On map sheet more particularly described in an application on file at Department of Natural Resources	012920M Teck Resources Limited Iglusuataliksiuk Lake 14D/16
A portion of license Held by Situates near On map sheet more particularly described in an application on file at Department of Natural Resources	012794M Ucore Rare Metals Inc. Makkovik River 13J/14	A portion of license Held by Situates near On map sheet more particularly described in an application on file at Department of Natural Resources	018558M Benton Resources Corp. Kingurutik Lake 14D/16
A portion of license Held by Situates near On map sheet more particularly described in an application on file at Department of Natural Resources	012795M Ucore Rare Metals Inc. Makkovik River 13J/14	A portion of license Held by Situates near On map sheet more particularly described in an application on file at Department of Natural Resources	013354M Teck Resources Limited Iglusuataliksiuk Lake 14D/16 14E/01
Mineral License Held by Situates near On map sheet	012796M Ucore Rare Metals Inc. Makkovik River 13J/14	A portion of license Held by Situates near On map sheet more particularly described in an application on file at Department of Natural Resources	013520M Teck Resources Limited Iglusuataliksiuk Lake 14D/16 14E/01
A portion of license Held by Situates near On map sheet more particularly described in an application on file at Department of Natural Resources	012798M Ucore Rare Metals Inc. Makkovik River 13J/14	A portion of license Held by Situates near On map sheet more particularly described in an application on file at Department of Natural Resources	013594M Benton Resources Corp. Kingurutik Lake 14D/16
Mineral License Held by Situates near On map sheet	012804M Benton Resources Corp. Iglusuataliksiuk Lake 14D/16	A portion of license Held by Situates near On map sheet more particularly described in an application on file at Department of Natural Resources	019296M Benton Resources Corp. Kingurutik Lake 14D/16
Mineral License Held by Situates near On map sheet	012807M Benton Resources Corp. Iglusuataliksiuk Lake 14D/16	A portion of license Held by Situates near On map sheet more particularly described in an application on file at Department of Natural Resources	013707M Benton Resources Corp. Kingurutik Lake 14D/15 14D/16 14E/02 14E/01
Mineral License Held by Situates near On map sheet	012813M Benton Resources Corp. Iglusuataliksiuk Lake 14D/16	A portion of license Held by Situates near	019297M Benton Resources Corp. Kingurutik Lake
A portion of license Held by Situates near On map sheet more particularly described in an application on file at Department of Natural Resources	012818M Bayswater Uranium Corp. Makkovik River 13J/14		

THE NEWFOUNDLAND AND LABRADOR GAZETTE
January 27, 2012

On map sheet	14D/15 14D/16	Mineral License	017891M
more particularly described in an application on file at Department of Natural Resources		Held by	Herron, Lori
		Situate near	Margaree, Southern NL
		On map sheet	11O/11
Mineral License	018075M	Mineral License	017985M
Held by	Intrinsic Minerals Ltd.	Held by	Castmor Resources Ltd.
Situate near	Kingurutik River	Situate near	White Bear Arm
On map sheet	14D/14 14D/15	On map sheet	13A/16
A portion of license	013971M	Mineral License	017987M
Held by	Zagrodnik, Michael Adam	Held by	Castmor Resources Ltd.
Situate near	Middle Ridge, Burin Peninsula	Situate near	White Bear Arm
On map sheet	01L/13 01M/04	On map sheet	03D/13 13A/16
more particularly described in an application on file at Department of Natural Resources		Mineral License	017989M
Mineral License	015555M	Held by	Azis, Ivars
Held by	Zagrodnik, Michael Adam	Situate near	Exploits River, Central NL
Situate near	Middle Ridge, Burin Peninsula	On map sheet	12A/16
On map sheet	01L/13	Mineral License	017990M
Mineral License	013992M	Held by	Azis, Ivars
Held by	Zagrodnik, Michael Adam	Situate near	Jacksons Arm Area, White Bay
Situate near	Middle Ridge, Burin Peninsula	On map sheet	12H/15
On map sheet	01L/13	Mineral License	017991M
Mineral License	014532M	Held by	Azis, Ivars
Held by	Penney, Brian	Situate near	Jacksons Arm Area, White Bay
Situate near	White Hills, Great Northern Peninsula	On map sheet	12H/15
On map sheet	02M/05	Mineral License	017992M
Mineral License	015477M	Held by	Lannon, Rosalind
Held by	North Range Resources Ltd.	Situate near	Gull Pond, Baie Verte Peninsula
Situate near	Terra Nova North River, Eastern NL	On map sheet	02E/13 12H/16
On map sheet	02D/07	Mineral License	017993M
Mineral License	015480M	Held by	Quinlan, Andrew
Held by	Benton Resources Corp.	Situate near	Rosemary Lake
Situate near	Williamsport, Great Northern Peninsula	On map sheet	23J/14
On map sheet	12I/09	Mineral License	017996M
Mineral License	016509M	Held by	Azis, Ivars
Held by	Golden Dory Resources Corp.	Situate near	Jacksons Arm Area, White Bay
Situate near	Greenwood Pond, Central NL	On map sheet	12H/15
On map sheet	02D/11	Mineral License	017998M
A portion of license	016998M	Held by	Azis, Ivars
Held by	Altius Resources Inc.	Situate near	Jacksons Arm Area, White Bay
Situate near	Dead Wolf Brook, Central NL	On map sheet	12H/15
On map sheet	02D/10	A portion of license	018795M
more particularly described in an application on file at Department of Natural Resources		Held by	Altius Resources Inc.
Mineral License	017637M	Situate near	Northwest Gander River, Central NL
Held by	Keats Jr, Suley	On map sheet	02D/05
Situate near	North of Shoulder Blade Lake, Central NL	more particularly described in an application on file at Department of Natural Resources	
On map sheet	12A/09 12A/16	A portion of license	018145M
Mineral License	017638M	Held by	Altius Resources Inc.
Held by	Keats Jr, Suley	Situate near	Serpentine Lake, Western NL
Situate near	Shoulder Blade Lake, Central NL	On map sheet	12B/16
On map sheet	12A/09	more particularly described in an application on file at Department of Natural Resources	
Mineral License	017888M	A portion of license	018146M
Held by	Herron, Lori	Held by	Altius Resources Inc.
Situate near	Ghost Pond, Central NL	Situate near	Northwest Gander River, Central NL
On map sheet	02E/05	On map sheet	02D/11 02D/12
		more particularly described in an application on file at Department of Natural Resources	

A portion of license 018147M
Held by Altius Resources Inc.
Situates near Serpentine Lake Area, Western NL
On map sheet 12B/16 12G/01
more particularly described in an application on file at Department of Natural Resources

A portion of license 018148M
Held by Altius Resources Inc.
Situates near Serpentine Lake Area, Western NL
On map sheet 12B/16 12G/01
more particularly described in an application on file at Department of Natural Resources

A portion of license 018150M
Held by Altius Resources Inc.
Situates near Pittmans Pond Area, Central NL
On map sheet 12H/07 12H/10
more particularly described in an application on file at Department of Natural Resources

A portion of license 018151M
Held by Altius Resources Inc.
Situates near Lower Crabb Brook, Western NL
On map sheet 12H/04 12G/01 12H/05 12G/08
more particularly described in an application on file at Department of Natural Resources

A portion of license 018155M
Held by Altius Resources Inc.
Situates near White Hills, Great Northern Peninsula
On map sheet 02M/05
more particularly described in an application on file at Department of Natural Resources

A portion of license 018156M
Held by Altius Resources Inc.
Situates near Serpentine Lake Area, Western NL
On map sheet 12B/16
more particularly described in an application on file at Department of Natural Resources

A portion of license 018157M
Held by Altius Resources Inc.
Situates near Brimstone Pond, Great Northern Peninsula
On map sheet 02M/05
more particularly described in an application on file at Department of Natural Resources

A portion of license 018158M
Held by Altius Resources Inc.
Situates near Lower Crabb Brook, Western NL
On map sheet 12G/01 12G/08
more particularly described in an application on file at Department of Natural Resources

A portion of license 018159M 019700M
Held by Altius Resources Inc.
Situates near Micmac Lake, Baie Verte Peninsula
On map sheet 12H/09 12H/10
more particularly described in an application on file at Department of Natural Resources

A portion of license 018160M
Held by Altius Resources Inc.
Situates near Hare Bay, Great Northern Peninsula
On map sheet 02M/05
more particularly described in an application on file at Department of Natural Resources

A portion of license 018162M
Held by Altius Resources Inc.
Situates near Ragged Harbour River, Central NL
On map sheet 02E/08
more particularly described in an application on file at Department of Natural Resources

A portion of license 018163M
Held by Altius Resources Inc.
Situates near White Hills, Great Northern Peninsula
On map sheet 02M/05
more particularly described in an application on file at Department of Natural Resources

A portion of license 018166M
Held by Altius Resources Inc.
Situates near The Green Handkerchief, Western NL
On map sheet 12G/01 12G/08
more particularly described in an application on file at Department of Natural Resources

A portion of license 018167M
Held by Altius Resources Inc.
Situates near Birchy Lake, Central NL
On map sheet 12H/07
more particularly described in an application on file at Department of Natural Resources

A portion of license 018168M
Held by Altius Resources Inc.
Situates near Ragged Harbour River, Central NL
On map sheet 02E/08
more particularly described in an application on file at Department of Natural Resources

A portion of license 018171M
Held by Altius Resources Inc.
Situates near Shoal Pond, Central NL
On map sheet 02E/08
more particularly described in an application on file at Department of Natural Resources

A portion of license 018173M
Held by Altius Resources Inc.
Situates near Flatwater Pond, Baie Verte Peninsula
On map sheet 12H/16
more particularly described in an application on file at Department of Natural Resources

A portion of license 018176M
Held by Altius Resources Inc.
Situates near Fox Island River, Western NL
On map sheet 12B/16
more particularly described in an application on file at Department of Natural Resources

Mineral License 018179M
Held by Altius Resources Inc.
Situates near Deer Lake Area, Western NL
On map sheet 12A/13

A portion of license 018180M
Held by Altius Resources Inc.
Situates near Weirs Pond, Central NL
On map sheet 02E/01 02E/08
more particularly described in an application on file at Department of Natural Resources

THE NEWFOUNDLAND AND LABRADOR GAZETTE
January 27, 2012

A portion of license 018181M
Held by Altius Resources Inc.
Situates near Fox Island River, Western NL
On map sheet 12B/09 12B/10 12B/16 12B/15
more particularly described in an application on file at Department of Natural Resources

A portion of license 018182M
Held by Altius Resources Inc.
Situates near Fox Island River, Western NL
On map sheet 12B/10 12B/15
more particularly described in an application on file at Department of Natural Resources

A portion of license 018183M
Held by Altius Resources Inc.
Situates near Weirs Brook, Central NL
On map sheet 02E/01 02E/02
more particularly described in an application on file at Department of Natural Resources

Mineral License 018184M
Held by Altius Resources Inc.
Situates near Fox Island River, Western NL
On map sheet 12B/16

Mineral License 018185M
Held by Altius Resources Inc.
Situates near Fox Island River, Western NL
On map sheet 12B/16

A portion of license 018186M
Held by Altius Resources Inc.
Situates near Jonathans Pond Area, Central NL
On map sheet 02E/02
more particularly described in an application on file at Department of Natural Resources

A portion of license 018187M
Held by Altius Resources Inc.
Situates near Gander Lake Area, Central NL
On map sheet 02D/15
more particularly described in an application on file at Department of Natural Resources

A portion of license 018189M
Held by Altius Resources Inc.
Situates near Gander Lake Area, Central NL
On map sheet 02D/15 02E/02
more particularly described in an application on file at Department of Natural Resources

A portion of license 018190M
Held by Altius Resources Inc.
Situates near Gander Lake Area, Central NL
On map sheet 02D/15
more particularly described in an application on file at Department of Natural Resources

A portion of license 018191M
Held by Altius Resources Inc.
Situates near Hunts Ponds, Central NL
On map sheet 02D/15
more particularly described in an application on file at Department of Natural Resources

A portion of license 018192M
Held by Altius Resources Inc.
Situates near Dead Wolf Brook, Central NL

On map sheet 02D/10
more particularly described in an application on file at Department of Natural Resources

A portion of license 018193M
Held by Altius Resources Inc.
Situates near Caribou Lake, Central NL
On map sheet 02D/10 02D/11
more particularly described in an application on file at Department of Natural Resources

A portion of license 018196M
Held by Altius Resources Inc.
Situates near Fox Island River Area, Western NL
On map sheet 12B/15
more particularly described in an application on file at Department of Natural Resources

Mineral License 018197M
Held by Altius Resources Inc.
Situates near Dennis Pond, Western NL
On map sheet 12B/08

A portion of license 018211M
Held by Altius Resources Inc.
Situates near Serpentine Lake Area, Western NL
On map sheet 12B/16
more particularly described in an application on file at Department of Natural Resources

A portion of license 018212M
Held by Altius Resources Inc.
Situates near Serpentine Lake Area, Western NL
On map sheet 12B/16 12G/01
more particularly described in an application on file at Department of Natural Resources

A portion of license 018213M
Held by Altius Resources Inc.
Situates near Serpentine Lake Area, Western NL
On map sheet 12B/16 12G/01
more particularly described in an application on file at Department of Natural Resources

A portion of license 018214M
Held by Altius Resources Inc.
Situates near Brimstone Pond, Great Northern Peninsula
On map sheet 02M/05
more particularly described in an application on file at Department of Natural Resources

A portion of license 018263M
Held by Tawsho Mining Inc.
Situates near Kings Point Area, Central NL
On map sheet 12H/09
more particularly described in an application on file at Department of Natural Resources

A portion of license 018301M
Held by Altius Resources Inc.
Situates near Rocky Pond, Central NL
On map sheet 02E/02
more particularly described in an application on file at Department of Natural Resources

A portion of license 018305M
Held by Altius Resources Inc.
Situates near Jonathans Pond Area, Central NL
On map sheet 02E/02

more particularly described in an application on file at Department of Natural Resources

Mineral License 018643M
Held by Altius Resources Inc.
Situates near Northwest Gander River, Central NL
On map sheet 02D/11

A portion of license 018816M
Held by Altius Resources Inc.
Situates near Micmac Lake, Baie Verte Peninsula
On map sheet 12H/09
more particularly described in an application on file at Department of Natural Resources

A portion of license 019051M
Held by Altius Resources Inc.
Situates near Jonathans Pond Area, Central NL
On map sheet 02E/02
more particularly described in an application on file at Department of Natural Resources

A portion of license 019052M
Held by Altius Resources Inc.
Situates near Jonathans Pond Area, Central NL
On map sheet 02E/02
more particularly described in an application on file at Department of Natural Resources

Mineral License 019053M
Held by Altius Resources Inc.
Situates near Jonathans Pond Area, Central NL
On map sheet 02E/02

A portion of license 019054M
Held by Altius Resources Inc.
Situates near Jonathans Pond Area, Central NL
On map sheet 02E/02
more particularly described in an application on file at Department of Natural Resources

A portion of license 019339M
Held by Altius Resources Inc.
Situates near Lower Crabb Brook, Western NL
On map sheet 12G/08
more particularly described in an application on file at Department of Natural Resources

The lands covered by this notice except for the lands within Exempt Mineral Lands, the Exempt Mineral Lands being described in CNLR 1143/96 and NLR 71/98, 104/98, 97/00, 36/01, 31/04, 78/06, 8/08 and 28/09 and outlined on 1:50 000 scale digital maps maintained by the Department of Natural Resources, will be open for staking after the hour of 9:00 a.m. on the 32nd clear day after the date of this publication.

DEPARTMENT OF NATURAL RESOURCES
JIM HINCHEY, P.Geo
Manager - Mineral Rights

File # 774:4445, 7610, 7611, 7612, 7613, 7630, 7632, 7634, 7642, 7648, 7653, 7656, 7666, 7669, 7672, 7673, 7674, 7675, 7677, 7684, 7687, 7693, 7698, 7699, 7712, 7754, 7792, 7798, 7838, 8206, 8351, 8422, 8529, 8530, 8535, 8705, 8782, 8785, 8799, 9269, 9932, 9935;

775:0413, 0714, 1097, 1098, 1303, 1306, 1379, 1381, 1383, 1384, 1385, 1386, 1387, 1390, 1392, 1511, 1512, 1513, 1514, 1515, 1517, 1518, 1522, 1523, 1524, 1525, 1526, 1527, 1529, 1530, 1533, 1534, 1535, 1538, 1540, 1543, 1546, 1547, 1548, 1549, 1550, 1551, 1552, 1553, 1554, 1556, 1557, 1558, 1559, 1560, 1563, 1564, 1578, 1579, 1580, 1581, 1626, 1660, 1664, 1979, 2135, 2344, 2345, 2346, 2347, 2580

Jan 27

LANDS ACT NOTICE OF INTENT

LANDS ACT, Chapter 36, S.N. 1991

Notice is hereby given that ENGLISH HARBOUR WEST BOAT LAUNCH AND STORAGE INC of English Harbour West, NL intends to apply to the Department of Environment and Conservation, two months from the publication of this Notice, to acquire title, pursuant to Section 7(2) (a) of the said Act, to that piece of Crown Land situated within fifteen (15) metres of the waters of Fortune Bay, in the Electoral District of Fortune Bay – Cape La Hune for the purpose of operating a boat launch and storage facility and being more particularly described as follows:

*Bounded on the North by Crown Land
for a distance of 41 m;
Bounded on the East by ocean
for a distance of 115 m;
Bounded on the South by ocean
for a distance of 19 m;
Bounded on the West by Private Property
for a distance of 74 m;
and then public road for 74 m;
and containing an area of
approximately 4,100 square metres.*

Any person wishing to object to the application must file the objection, in writing, within one month from the publication of this Notice, with reasons for it, to the Minister of Environment and Conservation, and mail to the nearest Regional Lands Office:

c/o Eastern Regional Lands Office, P.O. Box 8700, 5 Mews Place, St. John's, NL, A1B 4J6.

c/o Central Regional Lands Office, P.O. Box 2222, Gander, NL, A1V 1L7.

c/o Western Regional Lands Office, P.O. Box 2006, Noton Building, Corner Brook, NL, A2H 6J8.

c/o Labrador Regional Lands Office, P.O. Box 3014, Station "B", Happy Valley-Goose Bay, NL, A0P 1E0.

For further information on the proposed application, please contact: LINWOOD HUNT, Telephone number: (709) 888-6120.

Jan 27

NOTICE OF INTENT

LANDS ACT, Chapter 36, S.N. 1991

Notice is hereby given that LINDA SWEET and GLEN VOKEY of Trinity, NL intends to apply to the Department of Environment and Conservation, two months from the publication of this Notice, to acquire title, pursuant to Section 7(2) (e) of the said Act, to that piece of Crown Land situated within fifteen (15) metres of the waters of Trinity, in the Electoral District of Trinity North for the purpose of a wharf and being more particularly described as follows:

*Bounded on the North by Crown Land
for a distance of 83.9 m;
Bounded on the East by Crown Land
for a distance of 1.5 m;
Bounded on the South by Southwest Arm
for a distance of 83.9 m;
Bounded on the West by Crown Land
for a distance of 1.5 m;
and containing an area of
approximately 130 square metres.*

Any person wishing to object to the application must file the objection, in writing, within one month from the publication of this Notice, with reasons for it, to the Minister of Environment and Conservation, and mail to the nearest Regional Lands Office:

c/o Eastern Regional Lands Office, P.O. Box 8700, 5 Mews Place, St. John's, NL, A1B 4J6.

c/o Central Regional Lands Office, P.O. Box 2222, Gander, NL, A1V 1L7.

c/o Western Regional Lands Office, P.O. Box 2006, Noton Building, Corner Brook, NL, A2H 6J8.

c/o Labrador Regional Lands Office, P.O. Box 3014, Station "B", Happy Valley-Goose Bay, NL, A0P 1E0.

For further information on the proposed application, please contact: LINDA SWEET, Telephone number: (709) 464-2085.

Jan 27

NOTICE OF INTENT

LANDS ACT, Chapter 36, S.N. 1991

Notice is hereby given that THE LABRADOR HUNTING AND FISHING ASSOCIATION INC of Happy Valley-Goose Bay, NL intends to apply to the Department of Environment and Conservation, two months from the publication of this Notice, to acquire title, pursuant to Section 7(2) of the said Act, to that piece of Crown Land situated within fifteen (15) metres of the waters of an ephemeral stream, in the Electoral District of Lake Melville for the purpose of a safety area template and being more particularly described as follows:

*Bounded on the North by Crown Land
for a distance of 200 m;
Bounded on the East by Crown Land
for a distance of 5000 m;
Bounded on the South by Crown Land
for a distance of 2000 m;
Bounded on the West by Route 520
for a distance of 500 m;
and containing an area of
approximately 1,500,000 square metres.*

Any person wishing to object to the application must file the objection, in writing, within one month from the publication of this Notice, with reasons for it, to the Minister of Environment and Conservation, and mail to the nearest Regional Lands Office:

c/o Eastern Regional Lands Office, P.O. Box 8700, 5 Mews Place, St. John's, NL, A1B 4J6.

c/o Central Regional Lands Office, P.O. Box 2222, Gander, NL, A1V 1L7.

c/o Western Regional Lands Office, P.O. Box 2006, Noton Building, Corner Brook, NL, A2H 6J8.

c/o Labrador Regional Lands Office, P.O. Box 3014, Station "B", Happy Valley-Goose Bay, NL, A0P 1E0.

For further information on the proposed application, please contact: HOLLIS YETMAN, Telephone number: (709) 896-2609.

Jan 27

OUIETING OF TITLES ACT

**2012 01G 0230
IN THE SUPREME COURT OF
NEWFOUNDLAND AND LABRADOR
TRIAL DIVISION (GENERAL)**

IN THE MATTER OF the *Quieting of Titles Act*, cQ-3 of the RSNL 1990

AND IN THE MATTER OF all that piece or parcel of land situate and being on the western side of the Southern Shore Highway, Mobile, in the Province of Newfoundland and Labrador, Canada (Parcel "C")

AND IN THE MATTER OF all that piece or parcel of land also situate and being on the western side of the aforesaid Southern Shore Highway, and on the western side of an Abandoned Railway Line (Parcel "A")

AND IN THE MATTER OF an application of MARY PIKE, of St. John's, in the Province of Newfoundland and Labrador

NOTICE OF APPLICATION UNDER THE *OUIETING OF TITLES ACT* RSNL 1990, cQ-3, AS AMENDED

Notice is hereby given to all parties that MARY PIKE has applied to the Supreme Court of Newfoundland and Labrador, Trial Division, in the Judicial Centre of St. John's, to have the title to ALL THAT piece or parcel of land situate and being on the western side of the Southern Shore Highway, Mobile, in the Province of Newfoundland and Labrador, Canada, and being more particularly described in the Schedule marked "A" annexed hereto (and designated as Parcel "C" thereon) and ALL THAT piece of parcel of land also situate and being on the western side of the aforesaid Southern Shore Highway, and on the western side of an Abandoned Railway Line, and being more particularly described in the Schedule marked "B" annexed hereto (and designated as Parcel "A" thereon), of which parcels she claims on her own behalf to be the owner, investigated and for a declaration that she is the absolute owner thereof. All persons having a claim adverse to this title claimed by the Petitioner shall file in the Registry of the Supreme Court, Trial Division, Judicial Centre of St. John's, at the Court House building, Duckworth Street, St. John's, Newfoundland and Labrador, Canada, AIC 5M3, particulars of such adverse claim and serve the same together with an Affidavit verifying the same on the undersigned Solicitor for the Petitioner on or before the 20th day of February, 2012, after which date no party having any claim shall be permitted to file the same or to be heard except by special leave of the Court and subject to such conditions as the Court may deem just. All such adverse claims shall then be investigated in such manner as the Supreme Court of Newfoundland and Labrador, Trial Division, may direct.

DATED at St. John's, Newfoundland and Labrador, this 19th day of January, 2012.

LEARMONTH, DUNNE & BOULOS
Solicitors for the Petitioner
PER: Joseph F. Boulos

ADDRESS FOR SERVICE
Suite 804, TD Place
140 Water Street, PO Box 700
St. John's, NL AIC 5L4

Tel: (709) 739-8585
Fax: (709) 739-8151

DESCRIPTION

SCHEDULE "A" Parcel "C"

Southern Shore Highway
Job No. I1NL0623

Mobile, NL
August 2011

All the piece or parcel of land situate and being on the western side of Southern Shore Highway, at Mobile, Newfoundland and Labrador, in the electoral district of Ferryland and being bounded and abutted as follows, that is to say:

BEGINNING at a point on the western side of Southern Shore Highway at Mobile, said point having coordinates of

North 5 233 612.573 metres East 317 099.567 metres in the Modified Three Degree Transverse Mercator Projection for the province of Newfoundland and Labrador, Zone One;

THENCE running along the western side of Southern Shore Highway, South 20° 49' 27" East, 73.519 metres;

THENCE turning and running along the land now or formerly of Mary Hutching, roll 1191 frame 911, South 67° 09' 20" West, 23.549 metres; thence South 69° 58' 36" West, 23.462 metres; thence South 60° 53' 25" West, 12.044 metres; thence South 45° 48' 35" West, 16.604 metres; thence South 40° 06' 29" West, 13.064 metres;

THENCE turning and running along an Abandoned Railway Line, North 56° 15' 10" West, 109.948 metres;

THENCE turning and running along the land now or formerly of Cyril Maher, North 32° 18' 23" East, 9.039 metres; thence North 61° 46' 10" East, 21.024 metres; thence North 78° 17' 55" East, 30.946 metres; thence North 67° 40' 50" East, 26.423 metres; thence North 74° 28' 00" East, 44.397 metres; thence North 71° 14' 25" East, 20.066 metres, more or less to the point of commencement and containing an area of 0.9987 hectares, more or less, as shown on the attached plan, Job No. I1NL0623 dated August 2011.

There is a prescriptive powerline easement running through the property, as shown on the attached plan.

All bearings are grid bearings referred to Grid North. All distances are horizontal ground distances.

Hawco King Renouf
Newfoundland Land Surveyors
& Canada Land Surveyors

DESCRIPTION

SCHEDULE "B" Parcel "A"

Southern Shore Highway
Mobile, NL

All the piece or parcel of land situate and being west of Southern Shore Highway, at Mobile, Newfoundland and Labrador, in the electoral district of Ferryland and being bounded and abutted as follows, that is to say:

BEGINNING at a point west of Southern Shore Highway at Mobile, said point having coordinates of North 5 233 556.122 metres East 316 935.620 metres in the Modified Three Degree Transverse Mercator Projection for the province of Newfoundland and Labrador, Zone One;

THENCE running along an Abandoned Railway Line, South 56° 15' 00" East, 128.054 metres;

THENCE turning and running along the land formerly of Harold Blakler, now or formerly of Edward Blakler, South 28° 07' 04" West, 9.884 metres; thence South 44° 46' 11" West, 11.574 metres; thence South 33° 20' 38" West, 19.836 metres; thence South 49° 30' 19" West, 9.049 metres; thence South 57° 06' 08" West, 10.138 metres; thence South 80° 01' 40" West, 14.985 metres; thence North 86° 34' 00" West, 26.819 metres; thence South 79°

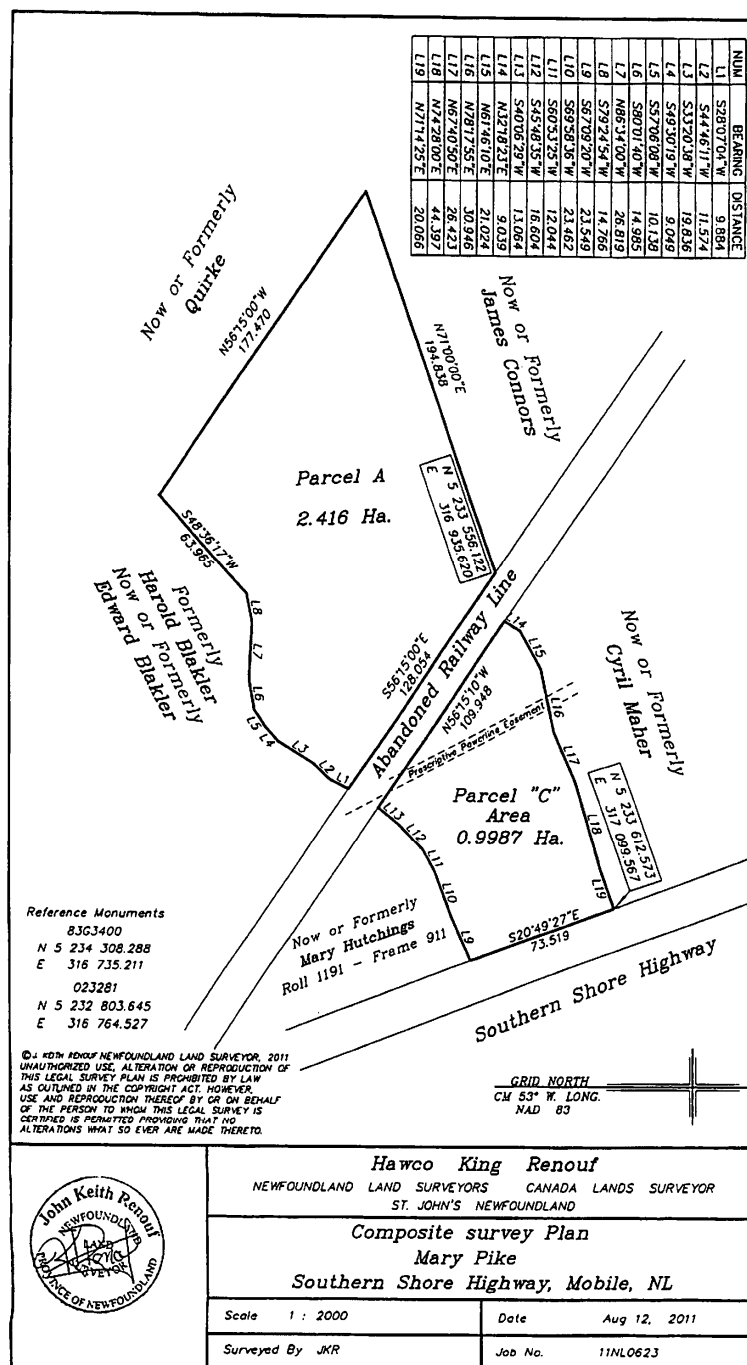
24' 54" West, 14.766 metres; thence South 48° 36' 17" West, 63.965 metres;

THENCE turning and running along the land now or formerly of Quirke, North 56° 15' 00" West, 177.470 metres;

THENCE turning and running along the land now or formerly of James Connors, North 71 ° 00' 00" East,

194.838 metres, more or less to the point of commencement and containing an area of 2.416 hectares, more or less, as shown on the attached plan, Job No. 11NL0623 dated August 2011.

All bearings are grid bearings referred to Grid North. All distances are horizontal ground distances.



2010 01G. NO. G5682
IN THE SUPREME COURT OF
NEWFOUNDLAND AND LABRADOR
TRIAL DIVISION

IN THE MATTER OF the *Quieting of Titles Act*, RSNL 1990, cQ-3 and amendments thereto;

AND IN THE MATTER OF all that piece or parcel of land situate at Main Road, Goulds, in the City of St. John's, in the Province of Newfoundland and Labrador;

AND IN THE MATTER OF an Application by BRENDAN ST. CROIX, of the City of St. John's, in the Province of Newfoundland and Labrador;

The Applicant, BRENDAN ST. CROIX, claims he is the owner of ALL THAT piece or parcel of land situate at Main Road, Goulds, in the City of St. John's, in the Province of Newfoundland and Labrador (henceforth referred to as the "Subject Property"), the same being more particularly described and outlined in Schedule "A" annexed to the Original Application, which Schedule shall form part and parcel of these presents, and the Applicant has, by way of said Originating Application, commenced Quieting of Title proceedings with respect to the Subject Property.

The Applicant claims that he is the owner of the Subject Property and is entitled to have title to the Subject Property judicially investigated and declared pursuant to s. 3(2) of the Act.

All persons having title adverse to the said title claimed by the Owner shall file in the Registry of the Supreme Court of Newfoundland and Labrador, Trial Division, particulars of such adverse claim and serve same, together with an Affidavit verifying same, to the 29th day of February, 2012, after which date no party having a claim shall be permitted to file same or be heard except by leave of the Court and subject to such conditions as the Court may deem just. All adverse claims shall then be registered on such manner as the Supreme Court may direct.

DATED at the City of St. John's, in the Province of Newfoundland and Labrador, this 17th day of November 2011.

BRISTOW MOYSE LAWYERS
Solicitor for the Applicant
PER: Kenneth Moyse

ADDRESS FOR SERVICE
Suite 301, Regatta Plaza II
84-86 Elizabeth Avenue
St. John's, NL A1A 1W7

Tel: 709-722-3777
Fax: 709-722-0740

SCHEDULE "A"

Brendan St. Croix Main Road, St. John's, NL

ALL THAT piece or parcel of land situate and being west of Main Road, in the City of St. John's, in the Province of Newfoundland, Canada, bounded and abutted as follows: that is to say beginning at a point, said point having M.T.M. Grid Co-ordinates (C.M. 53°) [NAD 83] of N 5 254 226.496 and E 322 326.259;

THENCE RUNNING South seventy seven degrees twenty eight minutes thirty six seconds West (S77°28'36"W), a distance of 152.520 meters by land of Kevin Lewis [R770 F288] and by land of Gerald & Janice Putt [Reg. No. 93023] to a point;

THENCE turning and running North sixty nine degrees thirty eight minutes twenty six seconds West (N69°38'26"W), a distance of 56.198 meters by Crown Land to a point;

THENCE turning and running South twenty degrees twenty one minutes thirty four seconds West (S20°21'34"W), a distance of 91.093 meters by Crown Land to a point;

THENCE turning and running North sixty nine degrees thirty eight minutes twenty six seconds West (N69°38'26"W), a distance of 61.000 meters by Crown Land to a point;

THENCE turning and running North twenty degrees twenty one minutes thirty four seconds East (N20°21'34"E), a distance of 122.000 meters by Crown Land to a point;

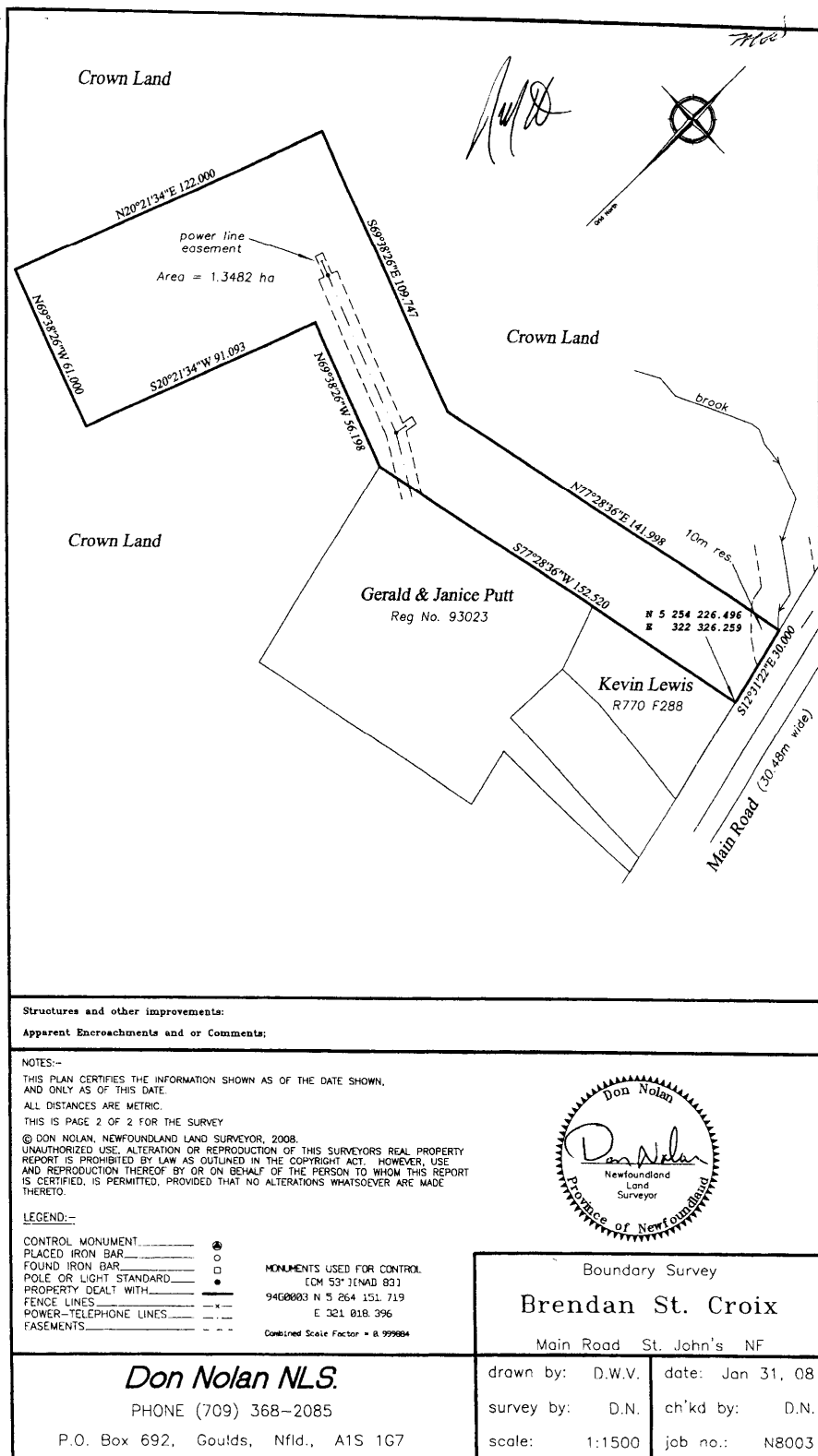
THENCE turning and running South sixty nine degrees thirty eight minutes twenty six seconds East (S69°38'26"E), a distance of 109.747 meters by Crown Land to a point;

THENCE turning and running North seventy seven degrees twenty eight minutes thirty six seconds East (N77°28'36"E), a distance of 141.998 meters by Crown Land to a point;

THENCE turning and running South twelve degrees thirty one minutes twenty two seconds East (S12°31'22"E), a distance of 30.000 meters by the western limits of Main Road (30.48m wide) to the PLACE OF BEGINNING and containing in all an area of 1.3482 hectares as more particularly described and delineated on plan N8003, 31 Jan 08 hereto annexed.

SUBJECT TO a power line easement being extending through the boundary as shown on the plan hereto annexed.

RESERVING NEVERTHELESS from the above described piece of parcel of land a 10m river reservation as shown on the plan. All bearings are referred to Grid North.



TRUSTEE ACT
ESTATE NOTICE

IN THE MATTER OF the Estate and Effects of late
SIDNEY ALEXANDER GOODYEAR of Lumsden, in the
Province of Newfoundland and Labrador, Retired Person,
Deceased.

All persons claiming to be creditors of or who have any
claims or demands upon or affecting the Estate of SIDNEY
ALEXANDER GOODYEAR, the aforesaid deceased, who
died at Brookfield, in the Province of Newfoundland and
Labrador on or about the 9th day of January, 2012, are
hereby requested to send particulars thereof in writing, duly
attested, to the undersigned Solicitor for the Executor of the
Estate on or before the 25th day of February, 2012 after
which date the Executor will proceed to distribute the said
Estate having regard only to the claims of which he shall
then have had notice.

DATED at the Town of Gander, Newfoundland and
Labrador, this 20th day of January, 2012.

BONNELL LAW
Solicitor for the Executor
PER: R. Archibald BONNELL

ADDRESS FOR SERVICE:

P.O. Box 563
218 Airport Boulevard
Gander, NL A1V 2E1
Tel: (709) 651-4949
Fax: (709) 651-4951

Jan 27 & Feb 3



THE NEWFOUNDLAND AND LABRADOR GAZETTE

PART II

SUBORDINATE LEGISLATION

FILED UNDER THE STATUTES AND SUBORDINATE LEGISLATION ACT

Vol. 87

ST. JOHN'S, FRIDAY, JANUARY 27, 2012

No. 4

NEWFOUNDLAND AND LABRADOR REGULATION

NLR 7/12



**NEWFOUNDLAND AND LABRADOR
REGULATION 7/12**

Food Premises Regulations (Amendment)
under the
Food and Drug Act

(Filed January 24, 2012)

Under the authority of section 3 of the *Food and Drug Act*, I make the following regulations.

Dated at St. John's, January 16, 2012.

Susan Sullivan
Minister of Health and Community Services

REGULATION

Analysis

- | | |
|-----------------------------|-------------------------------|
| 1. S.2 Amdt.
Definitions | 2. S.6 Amdt.
Food premises |
|-----------------------------|-------------------------------|

CNLR 1022/96
as amended

1. Paragraph 2(j) of the *Food Premises Regulations* is repealed and the following substituted:

(j) "mobile preparation premises" means a vehicle or other itinerant food premises from which food is prepared and is offered for sale to the public;

2. Section 6 of the regulations is amended by adding immediately after subsection (2) the following:

(3) Where food premises are located in a private dwelling, or an extension of a private dwelling, the food preparation, storage, processing, cooking and service facilities for the food premises shall be separated from those for the private dwelling in the manner referred to in subsection (4).

(4) The food preparation, storage, processing, cooking and service facilities for the food premises referred to in subsection (3) shall be separated from the private dwelling by a solid wall and a full self-closing door.

©William Parsons, Queen's Printer

Index

PART I

Lands Act– Notices	22
Mineral Act– Notice	17
Quieting of Titles Act– Notices	23
Trustee Act– Notice	28

PART II

CONTINUING INDEX OF SUBORDINATE LEGISLATION

Title of Act and Subordinate Legislation made thereunder	CNLR or NL Reg.	Amendment	NL Gazette Date & Page No.
Food and Drug Act			
Food Premises Regulations (Amdt)	NLR 7/12	Amends CNLR 1022/96 S.2 & S.6 Amdt	Jan 27/12 p. 357

The Newfoundland and Labrador Gazette is published from the office of William E. Parsons, Queen's Printer.

Copy for publication must be received by **Friday, 4:30 p.m.**, seven days before publication date to ensure inclusion in next issue.

Advertisements must be submitted in either PDF format or as a MSWord file. When this is not possible, advertisements must be either typewritten or printed legibly, separate from covering letter. Number of insertions required must be stated and the names of all signing officers typewritten or printed.

Copy may be mailed to the address below, faxed to (709) 729-1900 or emailed to queensprinter@gov.nl.ca.

Advertising rates are available upon request. Subscription rate for *The Newfoundland and Labrador Gazette* is \$125.00 for 52 weeks plus applicable tax (\$131.25). Weekly issues of \$3.00 per copy, plus tax payable in advance.

All cheques, money orders, etc., should be made payable to THE NEWFOUNDLAND EXCHEQUER ACCOUNT and all correspondence should be addressed to: Office of the Queen's Printer, P. O. Box 8700, Ground Floor, East Block, Confederation Building, St. John's, NL A1B 4J6. Telephone (709) 729-3649. Fax: (709) 729-1900.

Web Site: <http://www.gs.gov.nl.ca/printer/index.html>

**Place your order by contacting:
Office of The Queen's Printer
Confederation Building, East Block
St. John's, NL A1B 4J6
Telephone: (709) 729-3649 Fax: (709) 729-1900
email: queensprinter@gov.nl.ca**

**Government Information Product
Publication Rate Mail**

G.S.T. # R107442683

All requests for Subscription and Legislation MUST be prepaid.