



THE NEWFOUNDLAND AND LABRADOR GAZETTE

PART I

PUBLISHED BY AUTHORITY

Vol. 87	ST. JOHN'S, FRIDAY, MARCH 30, 2012	No. 13
---------	------------------------------------	--------

MINERAL ACT

NOTICE

Published in accordance with section 62 of CNLR 1143/96 under the *Mineral Act*, cM-12, RSNL 1990 as amended.

Mineral rights to the following mineral licenses have reverted to the Crown:

Mineral License	016964M
Held by	Rare Element Resources Ltd.
Situate near	Flowers Bay West
On map sheet	13N/11

Mineral License	016965M
Held by	Rare Element Resources Ltd.
Situate near	Flowers Bay West
On map sheet	13N/11

Mineral License	016966M
Held by	Rare Element Resources Ltd.
Situate near	Flowers Bay West
On map sheet	13N/11

Mineral License	016967M
Held by	Rare Element Resources Ltd.
Situate near	Flowers Bay West
On map sheet	13N/11

Mineral License	012759M
Held by	Vale Canada Limited
Situate near	Kogaluk River
On map sheet	14C/04

Mineral License	012762M
Held by	Vale Canada Limited
Situate near	Kogaluk River
On map sheet	14C/04

Mineral License	012763M
Held by	Vale Canada Limited
Situate near	Kogaluk River
On map sheet	14C/04

Mineral License	016968M
Held by	Rare Element Resources Ltd.
Situate near	Flowers Bay West
On map sheet	13N/11

Mineral License	012769M
Held by	Benton Resources Corp.
Situate near	Iglusuataliksuak Lake
On map sheet	14D/16

Mineral License	012774M
Held by	Teck Resources Limited
Situate near	Iglusuataliksuak Lake
On map sheet	14D/16

THE NEWFOUNDLAND AND LABRADOR GAZETTE

March 30, 2012

Mineral License	016969M	Mineral License	012819M
Held by	Rare Element Resources Ltd.	Held by	Bayswater Uranium Corp.
Situate near	Flowers Bay West	Situate near	Makkovik River
On map sheet	13N/11	On map sheet	13J/14
A portion of license	012787M	Mineral License	012832M
Held by	Ucore Rare Metals Inc.	Held by	Ucore Rare Metals Inc.
Situate near	Makkovik River	Situate near	Makkovik River
On map sheet	13J/14	On map sheet	13J/14
more particularly described in an application on file at Department of Natural Resources		A portion of license	017095M
Mineral License	012790M	Held by	Spruce Ridge Resources Ltd
Held by	Ucore Rare Metals Inc.	Situate near	Taylor Brook, White Bay
Situate near	Makkovik River	On map sheet	12H/10 12H/11
On map sheet	13J/14	more particularly described in an application on file at Department of Natural Resources	
Mineral License	012793M	A portion of license	012920M
Held by	Ucore Rare Metals Inc.	Held by	Teck Resources Limited
Situate near	Makkovik River	Situate near	Iglusuataliksiuk Lake
On map sheet	13J/14	On map sheet	14D/16
A portion of license	012794M	more particularly described in an application on file at Department of Natural Resources	
Held by	Ucore Rare Metals Inc.	A portion of license	018558M
Situate near	Makkovik River	Held by	Benton Resources Corp.
On map sheet	13J/14	Situate near	Kingurutik Lake
more particularly described in an application on file at Department of Natural Resources		On map sheet	14D/16
A portion of license	012795M	more particularly described in an application on file at Department of Natural Resources	
Held by	Ucore Rare Metals Inc.	A portion of license	013354M
Situate near	Makkovik River	Held by	Teck Resources Limited
On map sheet	13J/14	Situate near	Iglusuataliksiuk Lake
more particularly described in an application on file at Department of Natural Resources		On map sheet	14D/16 14E/01
Mineral License	012796M	more particularly described in an application on file at Department of Natural Resources	
Held by	Ucore Rare Metals Inc.	A portion of license	013520M
Situate near	Makkovik River	Held by	Teck Resources Limited
On map sheet	13J/14	Situate near	Iglusuataliksiuk Lake
A portion of license	012798M	On map sheet	14D/16 14E/01
Held by	Ucore Rare Metals Inc.	more particularly described in an application on file at Department of Natural Resources	
Situate near	Makkovik River	A portion of license	013594M
On map sheet	13J/14	Held by	Benton Resources Corp.
more particularly described in an application on file at Department of Natural Resources		Situate near	Kingurutik Lake
Mineral License	012804M	On map sheet	14D/16
Held by	Benton Resources Corp.	more particularly described in an application on file at Department of Natural Resources	
Situate near	Iglusuataliksiuk Lake	A portion of license	019296M
On map sheet	14D/16	Held by	Benton Resources Corp.
Mineral License	012807M	Situate near	Kingurutik Lake
Held by	Benton Resources Corp.	On map sheet	14D/16
Situate near	Iglusuataliksiuk Lake	more particularly described in an application on file at Department of Natural Resources	
On map sheet	14D/16	A portion of license	013707M
Mineral License	012813M	Held by	Benton Resources Corp.
Held by	Benton Resources Corp.	Situate near	Kingurutik Lake
Situate near	Iglusuataliksiuk Lake	On map sheet	14D/15 14D/16 14E/02 14E/01
On map sheet	14D/16	more particularly described in an application on file at Department of Natural Resources	
A portion of license	012818M	A portion of license	019297M
Held by	Bayswater Uranium Corp.	Held by	Benton Resources Corp.
Situate near	Makkovik River	Situate near	Kingurutik Lake
On map sheet	13J/14		
more particularly described in an application on file at Department of Natural Resources			

THE NEWFOUNDLAND AND LABRADOR GAZETTE

March 30, 2012

On map sheet	14D/15 14D/16	Mineral License	017891M
more particularly described in an application on file at Department of Natural Resources		Held by	Herron, Lori
		Situate near	Margaree, Southern NL
		On map sheet	11O/11
Mineral License	018075M	Mineral License	017985M
Held by	Intrinsic Minerals Ltd.	Held by	Castmor Resources Ltd.
Situate near	Kingurutik River	Situate near	White Bear Arm
On map sheet	14D/14 14D/15	On map sheet	13A/16
A portion of license	013971M	Mineral License	017987M
Held by	Zagrodnik, Michael Adam	Held by	Castmor Resources Ltd.
Situate near	Middle Ridge, Burin Peninsula	Situate near	White Bear Arm
On map sheet	01L/13 01M/04	On map sheet	03D/13 13A/16
more particularly described in an application on file at Department of Natural Resources		Mineral License	017989M
Mineral License	015555M	Held by	Azis, Ivars
Held by	Zagrodnik, Michael Adam	Situate near	Exploits River, Central NL
Situate near	Middle Ridge, Burin Peninsula	On map sheet	12A/16
On map sheet	01L/13	Mineral License	017990M
Mineral License	013992M	Held by	Azis, Ivars
Held by	Zagrodnik, Michael Adam	Situate near	Jacksons Arm Area, White Bay
Situate near	Middle Ridge, Burin Peninsula	On map sheet	12H/15
On map sheet	01L/13	Mineral License	017991M
Mineral License	014532M	Held by	Azis, Ivars
Held by	Penney, Brian	Situate near	Jacksons Arm Area, White Bay
Situate near	White Hills, Great Northern Peninsula	On map sheet	12H/15
On map sheet	02M/05	Mineral License	017992M
Mineral License	015477M	Held by	Lannon, Rosalind
Held by	North Range Resources Ltd.	Situate near	Gull Pond, Baie Verte Peninsula
Situate near	Terra Nova North River, Eastern NL	On map sheet	02E/13 12H/16
On map sheet	02D/07	Mineral License	017993M
Mineral License	015480M	Held by	Quinlan, Andrew
Held by	Benton Resources Corp.	Situate near	Rosemary Lake
Situate near	Williamsport, Great Northern Peninsula	On map sheet	23J/14
On map sheet	12I/09	Mineral License	017996M
Mineral License	016509M	Held by	Azis, Ivars
Held by	Golden Dory Resources Corp.	Situate near	Jacksons Arm Area, White Bay
Situate near	Greenwood Pond, Central NL	On map sheet	12H/15
On map sheet	02D/11	Mineral License	017998M
A portion of license	016998M	Held by	Azis, Ivars
Held by	Altius Resources Inc.	Situate near	Jacksons Arm Area, White Bay
Situate near	Dead Wolf Brook, Central NL	On map sheet	12H/15
On map sheet	02D/10	A portion of license	018795M
more particularly described in an application on file at Department of Natural Resources		Held by	Altius Resources Inc.
Mineral License	017637M	Situate near	Northwest Gander River, Central NL
Held by	Keats Jr, Suley	On map sheet	02D/05
Situate near	North of Shoulder Blade Lake, Central NL	more particularly described in an application on file at Department of Natural Resources	
On map sheet	12A/09 12A/16	A portion of license	018145M
Mineral License	017638M	Held by	Altius Resources Inc.
Held by	Keats Jr, Suley	Situate near	Serpentine Lake, Western NL
Situate near	Shoulder Blade Lake, Central NL	On map sheet	12B/16
On map sheet	12A/09	more particularly described in an application on file at Department of Natural Resources	
Mineral License	017888M	A portion of license	018146M
Held by	Herron, Lori	Held by	Altius Resources Inc.
Situate near	Ghost Pond, Central NL	Situate near	Northwest Gander River, Central NL
On map sheet	02E/05	On map sheet	02D/11 02D/12
		more particularly described in an application on file at Department of Natural Resources	

A portion of license 018147M
 Held by Altius Resources Inc.
 Situate near Serpentine Lake Area, Western NL
 On map sheet 12B/16 12G/01
 more particularly described in an application on file at Department of Natural Resources

A portion of license 018148M
 Held by Altius Resources Inc.
 Situate near Serpentine Lake Area, Western NL
 On map sheet 12B/16 12G/01
 more particularly described in an application on file at Department of Natural Resources

A portion of license 018150M
 Held by Altius Resources Inc.
 Situate near Pittmans Pond Area, Central NL
 On map sheet 12H/07 12H/10
 more particularly described in an application on file at Department of Natural Resources

A portion of license 018151M
 Held by Altius Resources Inc.
 Situate near Lower Crabb Brook, Western NL
 On map sheet 12H/04 12G/01 12H/05 12G/08
 more particularly described in an application on file at Department of Natural Resources

A portion of license 018155M
 Held by Altius Resources Inc.
 Situate near White Hills, Great Northern Peninsula
 On map sheet 02M/05
 more particularly described in an application on file at Department of Natural Resources

A portion of license 018156M
 Held by Altius Resources Inc.
 Situate near Serpentine Lake Area, Western NL
 On map sheet 12B/16
 more particularly described in an application on file at Department of Natural Resources

A portion of license 018157M
 Held by Altius Resources Inc.
 Situate near Brimstone Pond, Great Northern Peninsula
 On map sheet 02M/05
 more particularly described in an application on file at Department of Natural Resources

A portion of license 018158M
 Held by Altius Resources Inc.
 Situate near Lower Crabb Brook, Western NL
 On map sheet 12G/01 12G/08
 more particularly described in an application on file at Department of Natural Resources

A portion of license 018159M 019700M
 Held by Altius Resources Inc.
 Situate near Micmac Lake, Baie Verte Peninsula
 On map sheet 12H/09 12H/10
 more particularly described in an application on file at Department of Natural Resources

A portion of license 018160M
 Held by Altius Resources Inc.
 Situate near Hare Bay, Great Northern Peninsula
 On map sheet 02M/05
 more particularly described in an application on file at Department of Natural Resources

A portion of license 018162M
 Held by Altius Resources Inc.
 Situate near Ragged Harbour River, Central NL
 On map sheet 02E/08
 more particularly described in an application on file at Department of Natural Resources

A portion of license 018163M
 Held by Altius Resources Inc.
 Situate near White Hills, Great Northern Peninsula
 On map sheet 02M/05
 more particularly described in an application on file at Department of Natural Resources

A portion of license 018166M
 Held by Altius Resources Inc.
 Situate near The Green Handkerchief, Western NL
 On map sheet 12G/01 12G/08
 more particularly described in an application on file at Department of Natural Resources

A portion of license 018167M
 Held by Altius Resources Inc.
 Situate near Birchy Lake, Central NL
 On map sheet 12H/07
 more particularly described in an application on file at Department of Natural Resources

A portion of license 018168M
 Held by Altius Resources Inc.
 Situate near Ragged Harbour River, Central NL
 On map sheet 02E/08
 more particularly described in an application on file at Department of Natural Resources

A portion of license 018171M
 Held by Altius Resources Inc.
 Situate near Shoal Pond, Central NL
 On map sheet 02E/08
 more particularly described in an application on file at Department of Natural Resources

A portion of license 018173M
 Held by Altius Resources Inc.
 Situate near Flatwater Pond, Baie Verte Peninsula
 On map sheet 12H/16
 more particularly described in an application on file at Department of Natural Resources

A portion of license 018176M
 Held by Altius Resources Inc.
 Situate near Fox Island River, Western NL
 On map sheet 12B/16
 more particularly described in an application on file at Department of Natural Resources

Mineral License 018179M
 Held by Altius Resources Inc.
 Situate near Deer Lake Area, Western NL
 On map sheet 12A/13

A portion of license 018180M
 Held by Altius Resources Inc.
 Situate near Weirs Pond, Central NL
 On map sheet 02E/01 02E/08
 more particularly described in an application on file at Department of Natural Resources

A portion of license 018181M
Held by Altius Resources Inc.
Situates near Fox Island River, Western NL
On map sheet 12B/09 12B/10 12B/16 12B/15
more particularly described in an application on file at Department of Natural Resources

A portion of license 018182M
Held by Altius Resources Inc.
Situates near Fox Island River, Western NL
On map sheet 12B/10 12B/15
more particularly described in an application on file at Department of Natural Resources

A portion of license 018183M
Held by Altius Resources Inc.
Situates near Weirs Brook, Central NL
On map sheet 02E/01 02E/02
more particularly described in an application on file at Department of Natural Resources

Mineral License 018184M
Held by Altius Resources Inc.
Situates near Fox Island River, Western NL
On map sheet 12B/16

Mineral License 018185M
Held by Altius Resources Inc.
Situates near Fox Island River, Western NL
On map sheet 12B/16

A portion of license 018186M
Held by Altius Resources Inc.
Situates near Jonathans Pond Area, Central NL
On map sheet 02E/02
more particularly described in an application on file at Department of Natural Resources

A portion of license 018187M
Held by Altius Resources Inc.
Situates near Gander Lake Area, Central NL
On map sheet 02D/15
more particularly described in an application on file at Department of Natural Resources

A portion of license 018189M
Held by Altius Resources Inc.
Situates near Gander Lake Area, Central NL
On map sheet 02D/15 02E/02
more particularly described in an application on file at Department of Natural Resources

A portion of license 018190M
Held by Altius Resources Inc.
Situates near Gander Lake Area, Central NL
On map sheet 02D/15
more particularly described in an application on file at Department of Natural Resources

A portion of license 018191M
Held by Altius Resources Inc.
Situates near Hunts Ponds, Central NL
On map sheet 02D/15
more particularly described in an application on file at Department of Natural Resources

A portion of license 018192M
Held by Altius Resources Inc.
Situates near Dead Wolf Brook, Central NL

On map sheet 02D/10
more particularly described in an application on file at Department of Natural Resources

A portion of license 018193M
Held by Altius Resources Inc.
Situates near Caribou Lake, Central NL
On map sheet 02D/10 02D/11
more particularly described in an application on file at Department of Natural Resources

A portion of license 018196M
Held by Altius Resources Inc.
Situates near Fox Island River Area, Western NL
On map sheet 12B/15
more particularly described in an application on file at Department of Natural Resources

Mineral License 018197M
Held by Altius Resources Inc.
Situates near Dennis Pond, Western NL
On map sheet 12B/08

A portion of license 018211M
Held by Altius Resources Inc.
Situates near Serpentine Lake Area, Western NL
On map sheet 12B/16
more particularly described in an application on file at Department of Natural Resources

A portion of license 018212M
Held by Altius Resources Inc.
Situates near Serpentine Lake Area, Western NL
On map sheet 12B/16 12G/01
more particularly described in an application on file at Department of Natural Resources

A portion of license 018213M
Held by Altius Resources Inc.
Situates near Serpentine Lake Area, Western NL
On map sheet 12B/16 12G/01
more particularly described in an application on file at Department of Natural Resources

A portion of license 018214M
Held by Altius Resources Inc.
Situates near Brimstone Pond, Great Northern Peninsula
On map sheet 02M/05
more particularly described in an application on file at Department of Natural Resources

A portion of license 018263M
Held by Tawsho Mining Inc.
Situates near Kings Point Area, Central NL
On map sheet 12H/09
more particularly described in an application on file at Department of Natural Resources

A portion of license 018301M
Held by Altius Resources Inc.
Situates near Rocky Pond, Central NL
On map sheet 02E/02
more particularly described in an application on file at Department of Natural Resources

A portion of license 018305M
Held by Altius Resources Inc.
Situates near Jonathans Pond Area, Central NL
On map sheet 02E/02

more particularly described in an application on file at Department of Natural Resources

Mineral License 018643M
Held by Altius Resources Inc.
Situates near Northwest Gander River, Central NL
On map sheet 02D/11

A portion of license 018816M
Held by Altius Resources Inc.
Situates near Micmac Lake, Baie Verte Peninsula
On map sheet 12H/09

more particularly described in an application on file at Department of Natural Resources

A portion of license 019051M
Held by Altius Resources Inc.
Situates near Jonathans Pond Area, Central NL
On map sheet 02E/02

more particularly described in an application on file at Department of Natural Resources

A portion of license 019052M
Held by Altius Resources Inc.
Situates near Jonathans Pond Area, Central NL
On map sheet 02E/02

more particularly described in an application on file at Department of Natural Resources

Mineral License 019053M
Held by Altius Resources Inc.
Situates near Jonathans Pond Area, Central NL
On map sheet 02E/02

A portion of license 019054M
Held by Altius Resources Inc.
Situates near Jonathans Pond Area, Central NL
On map sheet 02E/02

more particularly described in an application on file at Department of Natural Resources

A portion of license 019339M
Held by Altius Resources Inc.
Situates near Lower Crabb Brook, Western NL
On map sheet 12G/08

more particularly described in an application on file at Department of Natural Resources

The lands covered by this notice except for the lands within Exempt Mineral Lands, the Exempt Mineral Lands being described in CNLR 1143/96 and NLR 71/98, 104/98, 97/00, 36/01, 31/04, 78/06, 8/08 and 28/09 and outlined on 1:50 000 scale digital maps maintained by the Department of Natural Resources, will be open for staking after the hour of 9:00 a.m. on the 32nd clear day after the date of this publication.

DEPARTMENT OF NATURAL RESOURCES

JIM HINCHEY, P.Geo
Manager - Mineral Rights

File # 774:4445, 7610, 7611, 7612, 7613, 7630, 7632, 7634, 7642, 7648, 7653, 7656, 7666, 7669, 7672, 7673, 7674, 7675, 7677, 7684, 7687, 7693, 7698, 7699, 7712, 7754, 7792, 7798, 7838, 8206, 8351, 8422, 8529, 8530, 8535, 8705, 8782, 8785, 8799, 9269, 9932, 9935;

775:0413, 0714, 1097, 1098, 1303, 1306, 1379, 1381, 1383, 1384, 1385, 1386, 1387, 1390, 1392, 1511, 1512, 1513, 1514, 1515, 1517, 1518, 1522, 1523, 1524, 1525, 1526, 1527, 1529, 1530, 1533, 1534, 1535, 1538, 1540, 1543, 1546, 1547, 1548, 1549, 1550, 1551, 1552, 1553, 1554, 1556, 1557, 1558, 1559, 1560, 1563, 1564, 1578, 1579, 1580, 1581, 1626, 1660, 1664, 1979, 2135, 2344, 2345, 2346, 2347, 2580

Mar 30

NOTICE

Published in accordance with section 62 of CNLR 1143/96 under the *Mineral Act*, cM-12, RSNL 1990 as amended.

Mineral rights to the following mineral licenses have reverted to the Crown:

Mineral License 018097M
Held by Lushman, Gilbert
Situates near Frenchmans Cove, Southern NL
On map sheet 11P/11

Mineral License 015729M
Held by Metals Creek Resources Corp.
Situates near Jacksons Arm, White Bay Area
On map sheet 12H/15

Mineral License 012925M
Held by Rideout, James
Situates near Rocky Pond, Western Nfld
On map sheet 12H/05

Mineral License 015505M
Held by Mesher, Ivan
Situates near Black Hill Pond, Southern NL
On map sheet 01M/10

Mineral License 015516M
Held by Canstar Resources Inc.
Situates near Peytons Pond, Avalon Peninsula
On map sheet 01N/07

Mineral License 016530M
Held by Hicks, David
Situates near Abbotts Creek, Southern NL
On map sheet 01M/12

Mineral License 016549M
Held by Midland Exploration Inc.
Situates near Mistinibi Lake
On map sheet 14D/04 24A/01

Mineral License 016561M
Held by Newfoundland Fluorspar Exploration Ltd.
Situates near Joe Batts Arm, Central NL
On map sheet 02E/09

Mineral License 016562M
Held by Newfoundland Fluorspar Exploration Ltd.
Situates near Joe Batts Arm, Central NL
On map sheet 02E/09

Mineral License 016563M
Held by Newfoundland Fluorspar Exploration Ltd.
Situates near Shoal Bay, Central NL
On map sheet 02E/09

Mineral License	018001M
Held by	Flight, Jason C. A.
Situate near	Triangle Pond, Avalon Peninsula
On map sheet	01N/06
Mineral License	018002M
Held by	Azis, Ivars
Situate near	Tilt Cove Area, Baie Verte Peninsula
On map sheet	02E/13
Mineral License	018003M
Held by	Azis, Ivars
Situate near	Quinn Lake, Central NL
On map sheet	12A/06
Mineral License	018004M
Held by	Azis, Ivars
Situate near	Quinn Lake, Central NL
On map sheet	12A/06
Mineral License	018005M
Held by	Azis, Ivars
Situate near	Quinn Lake, Central NL
On map sheet	12A/06
Mineral License	018019M
Held by	Tectonics Inc.
Situate near	Long Point, Western NL
On map sheet	12B/10 12B/15
Mineral License	018022M
Held by	Hicks, Darrin
Situate near	Rambler, Baie Verte Peninsula
On map sheet	12H/16
Mineral License	018025M
Held by	Gogold Resources Inc.
Situate near	Rambler, Baie Verte Peninsula
On map sheet	12H/16
Mineral License	018034M
Held by	Stares, Shane
Situate near	Northwest Gander River, Central NL
On map sheet	02D/11
Mineral License	018035M
Held by	Tectonics Inc.
Situate near	Long Point, Western NL
On map sheet	12B/10 12B/11 12B/15
Mineral License	018043M
Held by	Labrador-Menihek Resources Inc.
Situate near	Stakit Lake
On map sheet	23J/11
A portion of license	018502M
Held by	Marathon Gold Corporation
Situate near	Little Barachois Brook, Western NL
On map sheet	12A/05 12B/08
more particularly described in an application on file at Department of Natural Resources	
A portion of license	019251M
Held by	Marathon Gold Corporation
Situate near	Puddle Pond, Central NL
On map sheet	12A/05
more particularly described in an application on file at Department of Natural Resources	

The lands covered by this notice except for the lands within Exempt Mineral Lands, the Exempt Mineral Lands being described in CNLR 1143/96 and NLR 71/98, 104/98, 97/00, 36/01, 31/04, 78/06, 8/08 and 28/09 and outlined on 1:50 000 scale digital maps maintained by the Department of Natural Resources, will be open for staking after the hour of 9:00 a.m. on the 32nd clear day after the date of this publication.

DEPARTMENT OF NATURAL RESOURCES

JIM HINCHEY, P. Geo

Manager - Mineral Rights

File #'s 774:5673, 7785, 7803, 9950, 9960;
775:0432, 0441, 0452, 0453, 0454, 1393, 1394,
1395, 1396, 1397, 1408, 1411, 1416, 1427,
1428, 1434, 1857, 2511

Mar 30

LANDS ACT**NOTICE OF INTENT*****Lands Act, c36, SNL 1991, as amended***

NOTICE IS HEREBY given that NALCOR ENERGY of St. John's, NL intends to apply to the Department of Environment and Conservation, two months from the publication of this Notice, to acquire title, pursuant to Section 7(2) (a) of the said Act, to that piece of Crown land situated within fifteen (15) metres of the waters of the Churchill River in the Electoral District of Lake Melville for the purpose of a hydro-electric generating facility. The land is more particularly described as follows:

*All that land along the north side of the
Churchill River in the area of Muskrat Falls:
Beginning at approximate Longitude 60°47'22" and
ending at approximate Longitude 60°45'59" (NAD83)
Bounded on the North by Crown Land
for a distance of 3965 metres;
Bounded on the East by Crown Land
for a distance of 15 metres;
Bounded on the South by Churchill River
for a distance of 3965 metres;
Bounded on the West by Crown Land
for a distance of 15 metres;
and containing an area of
approximately 59500 square metres.*

Any person wishing to object to the application must file the objection, in writing, within one month from the publication of this Notice, with reasons for it, to the Minister of Environment and Conservation, and mail to the nearest Regional Lands Office:

c/o Eastern Regional Lands Office, P.O. Box 8700, 5 Mews Place, St. John's, NL, A1B 4J6.

c/o Central Regional Lands Office, P.O. Box 2222, Gander, NL, A1V 1L7.

c/o Western Regional Lands Office, P.O. Box 2006, Noton Building, Corner Brook, NL, A2H 6J8.

c/o Labrador Regional Lands Office, P.O. Box 3014, Station "B", Happy Valley-Goose Bay, NL, A0P 1E0.

For further information on the proposed application, please contact: JOHN COOPER, Telephone Number: (709) 737-1944.

Mar 30

NOTICE OF INTENT
Lands Act, c36, SNL 1991, as amended

NOTICE IS HEREBY given that NALCOR ENERGY of St. John's, NL intends to apply to the Department of Environment and Conservation, two months from the publication of this Notice, to acquire title, pursuant to Section 7(2) (a) of the said Act, to that piece of Crown land situated within fifteen (15) metres of the waters of the Churchill River in the Electoral District of Lake Melville for the purpose of a hydro-electric generating facility. The land is described as follows:

*All that land along the south side of the
Churchill River in the area of Muskrat Falls:
Beginning at approximate Longitude 60°47'22" and
ending at approximate Longitude 60°45'17" (NAD83)
Bounded on the North by Churchill River
for a distance of 2850 metres;*

*Bounded on the East by Crown Land
for a distance of 15 metres;
Bounded on the South by Crown Land
for a distance of 2850 metres;
Bounded on the West by Crown Land
for a distance of 15 metres;
and containing an area of
approximately 42750 square metres.*

Any person wishing to object to the application must file the objection, in writing, within one month from the publication of this Notice, with reasons for it, to the Minister of Environment and Conservation, and mail to the nearest Regional Lands Office:

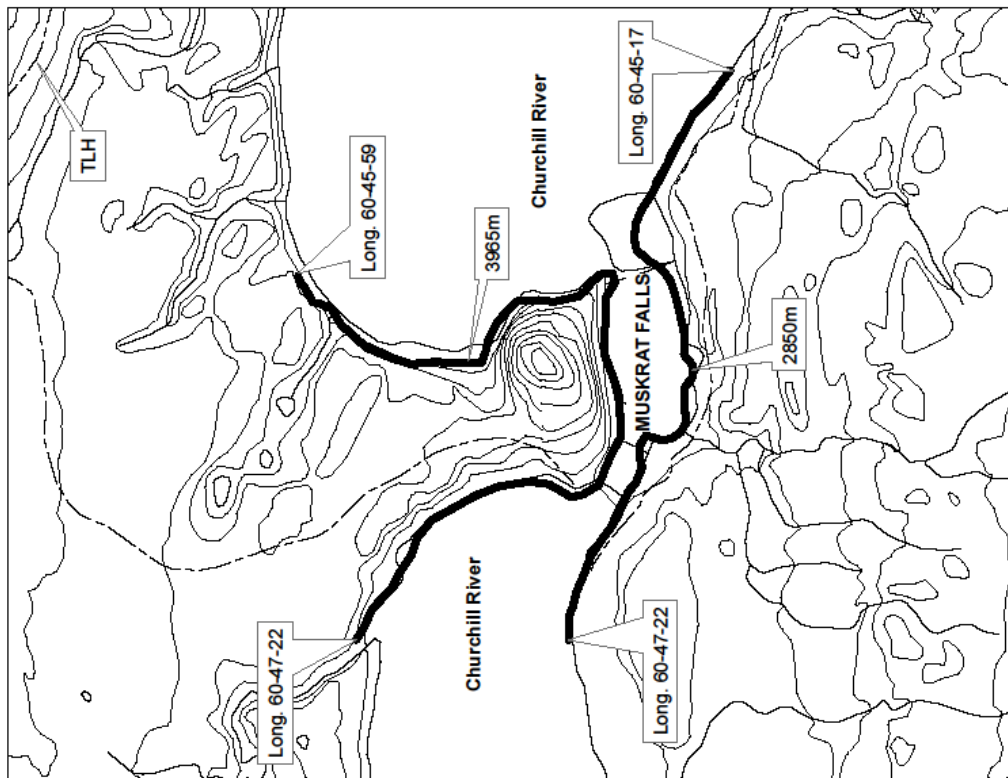
c/o Eastern Regional Lands Office, P.O. Box 8700, 5 Mews Place, St. John's, NL, A1B 4J6.

c/o Central Regional Lands Office, P.O. Box 2222, Gander, NL, A1V 1L7.

c/o Western Regional Lands Office, P.O. Box 2006, Noton Building, Corner Brook, NL, A2H 6J8.

c/o Labrador Regional Lands Office, P.O. Box 3014, Station "B", Happy Valley-Goose Bay, NL, A0P 1E0.

For further information on the proposed application, please contact: JOHN COOPER, Telephone Number: (709) 737-1944.



Mar 30

QUIETING OF TITLES ACT

**2012 01G 1448
IN THE SUPREME COURT OF
NEWFOUNDLAND AND LABRADOR
TRIAL DIVISION (GENERAL)**

NOTICE OF APPLICATION under the *Quieting of Titles Act*, RSNL 1990, cQ-3, as amended;

Notice is hereby given to all parties that 65158 NEWFOUNDLAND AND LABRADOR LIMITED has applied to the Supreme Court of Newfoundland and Labrador, Trial Division, at St. John's, to have title to all that piece or parcel of land situate and being on the west side of St. Thomas Line, in the Town of Paradise, in the province of Newfoundland and Labrador, as more particularly described and set forth in the Schedule hereunto annexed marked "A" of which the Applicant claims to be the owner, investigated and for a Declaration that 65158 NEWFOUNDLAND AND LABRADOR LIMITED is the absolute owner thereof, subject to a mortgage in favour of CDL Holdings Limited and Dawe's Investments Limited registered as number 478102 in the Registry of Deeds for the province of Newfoundland and Labrador ("the Registry") and subject to an easement in favour of Newfoundland Power Inc. and Bell Aliant Regional Communications Inc. registered as number 502152 in the Registry.

By a Deed of Conveyance dated September 6th, 2011 and registered as number 478099 at the Registry, 65158 NEWFOUNDLAND AND LABRADOR LIMITED acquired the subject property from 51039 Newfoundland and Labrador Limited.

The Applicant has been ordered to publish notice of the application as required by the above named Act. All persons having title adverse to the said title claimed by the Applicant shall file in the Registry of the Supreme Court of Newfoundland and Labrador at St. John's particulars of such adverse claim and serve the same together with an Affidavit verifying same on the undersigned solicitors for the Applicant on or before the 30th day of April, 2012, after which date no party having any claim shall be permitted to file the same or be heard except by leave of the Court and subject to such conditions as the Court may deem just. All such adverse claims shall be then investigated as the said Supreme Court of Newfoundland and Labrador at St. John's may direct.

DATED AT the City of St. John's, in the province of Newfoundland and Labrador, this 19th day of March, 2012.

FRENCH & ASSOCIATES
Solicitors for the Applicant
PER: Christopher E. Gill

ADDRESS FOR SERVICE:

Suite 122, Elizabeth Towers
100 Elizabeth Towers
St. John's, NL A1B 1S1

Tel: (709) 754-1800

Fax: (709) 754-2701

Email: cgill@french-associates.com

SCHEDULE "A"

All that piece or parcel of land situate, lying and being west of St. Thomas Line, in the Town of Paradise, in the province of Newfoundland and Labrador, Canada and being more particularly described as follows, that is to say:

BEGINNING at a point, said point being in the southwestern limit of Seascap Drive (Paradise Ridge - Phase 5) and having co-ordinates of North 5 268 480.758 metres and East 312 476.288 metres of the modified three degree transverse Mercator projection (Zone 1, NAD 83) for the province of Newfoundland and Labrador, Canada:

THENCE running along the aforementioned southwestern limit of Seascap Drive S 29° 57' 54" E a distance of 15.000 metres;

THENCE running along the southeastern limit of Seascap Drive N 60° 02' 06" E a distance of 75.000 metres;

THENCE running by Lots fronting on Tottenham Place, (Paradise Ridge - Phase 5) S 29° 57' 54" E a distance of 59.100 metres;

THENCE running S 45° 17' 48" E a distance of 49.757 metres;

THENCE running S 79° 05' 24" E a distance of 26.253 metres;

THENCE running by land designated as a conservation area (open space) S 13° 49' 41" W a distance of 25.042 metres;

THENCE running S 19° 44' 40" W a distance of 27.197 metres;

THENCE running S 24° 18' 42" W a distance of 81.082 metres;

THENCE running S 30° 29' 31" W a distance of 98.542 metres;

THENCE running by land of Eric Abbott, Civic No. 6 Howard Avenue, (Roll 2470 Frame 650, Registry of Deeds for Newfoundland and Labrador) and land of Edward Howlett, Civic No. 5 Howard Avenue; (Registration No. 364687, Registry of Deeds for Newfoundland and Labrador) and land of Leon Jackson, Civic No. 6 Morgan Avenue, (Roll 672 Frame 1595, Registry of Deeds for Newfoundland and Labrador) and land of Edward Dobbin, Civic No. 5 Morgan Avenue, (Registration No. 220982, Registry of Deeds for Newfoundland and Labrador) S 59° 31' 27" W a distance of 188.994 metres;

THENCE running by land of 51039 Newfoundland and Labrador Limited (Portion of Registration No's 79328, 79332, and 79381, Registry of Deeds for Newfoundland and Labrador) N 30° 28' 33" W" a distance of 301.449 metres;

THENCE running by Lots fronting on Springbrook Avenue (Roll 1083 Frame 361, Registry of Deeds for Newfoundland Labrador) N 59° 42' 00" E a distance of 102.111 metres,

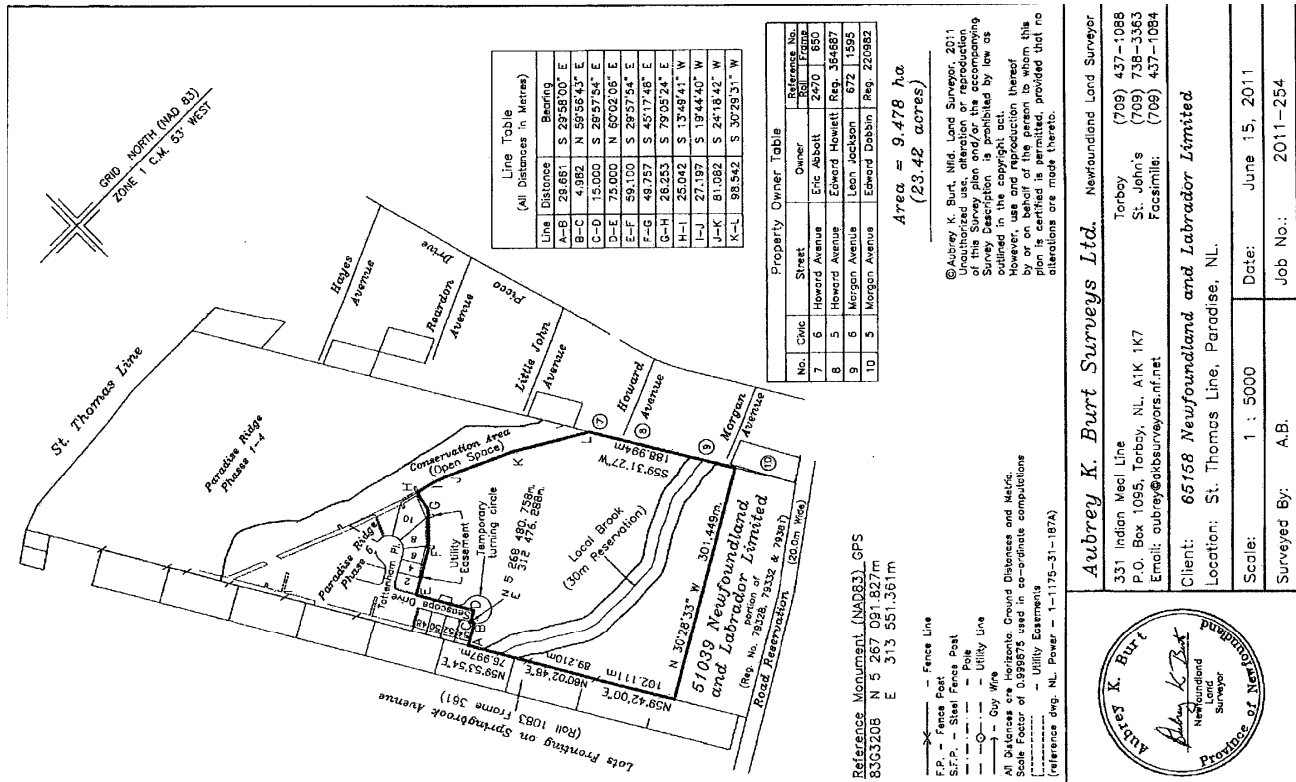
THENCE running N 60° 02' 48" E a distance of 89.210 metres,

THENCE running N 59° 53' 54" E a distance of 76.997 metres,

THENCE running by Civic No. 54 Seascap Drive, (Paradise Ridge - Phase 5) S 29° 58' 00" E a distance of 29.661 metres;

THENCE running N 59° 56' 43"E a distance of 4.982 metres, more or less, to the principal Point of Beginning.

The above described piece or parcel of land contains an area of 9.478 hectares, the same being more particularly described on the drawing hereto attached. All bearings refer to Grid North (NAD 83). The said property is SUBJECT TO a utility easement (referenced to Newfoundland Power drawing No. 1-1175-31-187A), a temporary turning circle situated at the end of Seascap Drive and a reservation for a local brook passing through the said land as indicated on the attached plan.



CHANGE OF NAME ACT, 2009

Legal Name Changes
Processed During the Period
FEBRUARY, 2012

Under the authority vested in me by the *Change of Name Act, 2009*, SNL 2009 cC-8-1, I hereby certify that the following names have been changed.

Former Name	Present Name	Address
Wells, Joshua Patrick	Wells-Evans, Joshua	St. John's
Barfoot, Patrick David	Barfoot, Patrick David	St. John's
Curnew, Laura Lee	Nolan, Laura Lee	St. George's
Martin, Melissa Jayne	Martingale, Melissa Jayne	St. John's
Gale, David George	Martingale, David George	St. John's
Howell, Landon Gordon John	Chaulk, Landon Gordon John	St. John's
Gavin, Kaylee Shevonne	Rice, Kaylee Shevonne	St. John's
Collins, Denise Usakumaskueu	Piwas, Denise Usakumaskueu	St. John's
Collins, Louise James	Piwas, Louise James	St. John's
Collins, Raymond Jeffrey	Piwas, Raymond Jeffrey	St. John's
Anthony, John Joseph	Piccott, John Joseph	St. John's
Targatt, Richard Thomas	Targatt, Richard Thomas	St. John's
Warren, Maria Darlene Louise	Rideout, Maria Darlene Louise	St. John's
Atkins, Edna Louise	Jenkins, Edna Louise	St. John's
Wall, Madeline Jean Tremblert	Tremblert, Madeline Jean	St. John's
Froude, Jennifer Krista-Lee	Ivey, Jennifer Krista-Lee	St. John's
Hipditch, John Cyril	Hepditch, John Cyril	St. John's
Hanley, Evan Norman	Norman-Hanley, Evan Gregory	St. John's
Hibbs, Nikita Kaitlin Gasselle	Marsh, Nikita Kaitlin Gasselle	St. John's
Paquin, Veronique	Polue, Veronique	St. John's
Gillard, Georgina Julia	Hatchez, Georgina Julia	St. John's
Goose-Denty, Aiden Michael	Goose, Aiden Michael	St. John's
Barker, Mary-Jane Deidre	Barker-Hodder, Mary-Jane Deidre	St. John's
Collins, Amy Natasha	Stoodley, Amy Natasha	St. John's
Brown, Miranda Lynn	Bennett, Miranda Lynn	St. John's
Hicks, Stephen William	Hinks, Stephen William	St. John's
Nochassak, Edward Darren Simeon Lucas Jacob	Karpik, Edward Darren Simeon Lucas Jacob	St. John's
Wells, David Rodney Silas	George, David Rodney Silas	St. John's
Wells, Jenny Jolie Emma	George, Jenny Jolie Emma	St. John's
Strickland, Cara Catherine	Harris, Cara Catherine	St. John's
Geange, James Ralph	Greene, Laura Elizabeth	St. John's
Piercey, Lillian Loretta	Geange, James Ralph	St. John's
Retieff, Tracy Lee	Sheppard, Patricia	St. John's
Newman, Kelsey Angela	Retieff, Tracy Lee	St. John's
Spencer, Hunter	McCarthy, Kelsey Angela	St. John's
Delaney, Pamela Edith	Kings-Spencer, Hunter Marco	St. John's
Fox, Meaghan Denise Natasha	McGrath, Pamela Edith	St. John's
Clevert, Wendy Rose	Newell-Fox, Meaghan Denise Natasha Khan	St. John's
Knee, Alex Michael Patey	Rose, Wendy Elizabeth	St. John's
Maddigan-Hammond, Paige Louise Mary	Notfall, Alex Michael Patey	St. John's
Runbolk, Morley Drew	Maddigan, Paige Louise Mary	St. John's
	Decker, Drew Morley	St. John's

Dated this 20th day of March, 2012.

SERVICE NL
KEN MULLALLY
REGISTRAR, VITAL STATISTICS



THE NEWFOUNDLAND AND LABRADOR GAZETTE

PART II

SUBORDINATE LEGISLATION

FILED UNDER THE STATUTES AND SUBORDINATE LEGISLATION ACT

Vol. 87

ST. JOHN'S, FRIDAY, MARCH 30, 2012

No. 13

NEWFOUNDLAND AND LABRADOR REGULATIONS

NLR 21/12

NLR 22/12



**NEWFOUNDLAND AND LABRADOR
REGULATION 21/12**

*Feasibility Report Respecting the Amalgamation of the Towns of
Lamaline, Lord's Cove, Point au Gaul and Point May Order*
under the
Municipalities Act, 1999

(Filed March 27, 2012)

Under the authority of section 9 of the *Municipalities Act, 1999*, I
make the following Order.

Dated at St. John's, March 27, 2012.

Kevin O'Brien
Minister of Municipal Affairs

ORDER

Analysis

- | | |
|-----------------------|--------------------------|
| 1. Short title | 3. Appointment |
| 2. Feasibility report | 4. Preparation of report |

Short title

1. This Order may be cited as the *Feasibility Report Respecting the Amalgamation of the Towns of Lamaline, Lord's Cove, Point au Gaul and Point May Order*.

Feasibility report

2. A feasibility report shall be prepared to consider the amalgamation of the Towns of Lamaline, Lord's Cove, Point au Gaul and Point

*Feasibility Report Respecting the Amalgamation of
the Towns of Lamaline, Lord's Cove, Point au Gaul
and Point May Order*

21/12

May into a single municipal entity, including the unincorporated lands located between the towns.

Appointment

3. Robyn Bursey is appointed to prepare the feasibility report.

Preparation of
report

4. The feasibility report shall be prepared in accordance with the provisions of the *Municipalities Act, 1999*.

©William E. Parsons, Queen's Printer



NEWFOUNDLAND AND LABRADOR REGULATION 22/12

*Feasibility Report Respecting the Annexation of the Local Service
District of Pleasantview to the Town of Point Leamington Order*
under the
Municipalities Act, 1999

(Filed March 27, 2012)

Under the authority of section 9 of the *Municipalities Act, 1999*, I
make the following Order.

Dated at St. John's, March 27, 2012.

Kevin O'Brien
Minister of Municipal Affairs

ORDER

Analysis

- | | |
|-----------------------|--------------------------|
| 1. Short title | 3. Appointment |
| 2. Feasibility report | 4. Preparation of report |

Short title

1. This Order may be cited as the *Feasibility Report Respecting the
Annexation of the Local Service District of Pleasantview to the Town of
Point Leamington Order*.

Feasibility report

2. A feasibility report shall be prepared to consider the annexation
of the Local Service District of Pleasantview to the Town of Point
Leamington.

*Feasibility Report Respecting the Annexation of the
Local Service District of Pleasantview to the Town of
Point Leamington Order*

22/12

Appointment
Preparation of
report

3. Robyn Bursey is appointed to prepare the feasibility report.

4. The feasibility report shall be prepared in accordance with the provisions of the *Municipalities Act, 1999*.

©William E. Parsons, Queen's Printer

Index

PART I

Change of Name Act, 2009 – Notice	133
Lands Act – Notices	129
Mineral Act – Notices.....	123
Quieting of Titles Act – Notice	131

PART II

CONTINUING INDEX OF SUBORDINATE LEGISLATION

Title of Act and Subordinate Legislation made thereunder	CNLR or NL Reg.	Amendment	NL Gazette Date & Page No.
Municipalities Act, 1999			
Feasibility Report Respecting the Amalgamation of the Towns of Lamaline, Lord's Cove, Point au Gaul and Point May Order	NLR 21/12	New	Mar 30/12 p. 435
Feasibility Report Respecting the Annexation of the Local Service District of Pleasantview to the Town of Point Leamington Order	NLR 22/12	New	Mar 30/12 p. 437

The Newfoundland and Labrador Gazette is published from the office of William E. Parsons, Queen's Printer.

Copy for publication must be received by **Friday, 4:30 p.m.**, seven days before publication date to ensure inclusion in next issue.

Advertisements must be submitted in either PDF format or as a MSWord file. When this is not possible, advertisements must be either typewritten or printed legibly, separate from covering letter. Number of insertions required must be stated and the names of all signing officers typewritten or printed.

Copy may be mailed to the address below, faxed to (709) 729-1900 or emailed to queensprinter@gov.nl.ca.

Advertising rates are available upon request. Subscription rate for *The Newfoundland and Labrador Gazette* is \$125.00 for 52 weeks plus applicable tax (\$131.25). Weekly issues of \$3.00 per copy, plus tax payable in advance.

All cheques, money orders, etc., should be made payable to THE NEWFOUNDLAND EXCHEQUER ACCOUNT and all correspondence should be addressed to: Office of the Queen's Printer, P. O. Box 8700, Ground Floor, East Block, Confederation Building, St. John's, NL A1B 4J6. Telephone (709) 729-3649. Fax: (709) 729-1900.

Web Site: <http://www.gs.gov.nl.ca/printer/index.html>

**Place your order by contacting:
Office of The Queen's Printer
Confederation Building, East Block
St. John's, NL A1B 4J6
Telephone: (709) 729-3649 Fax: (709) 729-1900
email: queensprinter@gov.nl.ca**

**Government Information Product
Publication Rate Mail**

G.S.T. # R107442683

All requests for Subscription and Legislation MUST be prepaid.