



# THE NEWFOUNDLAND AND LABRADOR GAZETTE

## PART I

### PUBLISHED BY AUTHORITY

|         |                                   |        |
|---------|-----------------------------------|--------|
| Vol. 87 | ST. JOHN'S, FRIDAY, JULY 20, 2012 | No. 29 |
|---------|-----------------------------------|--------|

#### CORPORATIONS ACT

*Corporations Act* - Section 393  
Local Incorporations  
For the Month of: April 2012

|             |               |  |            |       |  |
|-------------|---------------|--|------------|-------|--|
|             |               |  | 2012-04-04 | 67258 | VEITCH PHYSIOTHERAPY INC.                            |
|             |               |  | 012-04-04  | 67259 | Furey's Apartments (2012) Ltd.                       |
|             |               |  | 2012-04-05 | 67271 | G AND F INVESTMENTS LTD.                             |
|             |               |  | 2012-04-05 | 67273 | LSMM HOLDINGS LTD.                                   |
|             |               |  | 2012-04-05 | 67274 | MANAGEMENT ASSOCIATION<br>RATTLING BROOK SALMON INC. |
|             |               |  | 2012-04-05 | 67272 | PTE ENTERPRISES LTD.                                 |
|             |               |  | 2012-04-05 | 67267 | Two Painting Gals Ltd.                               |
|             |               |  | 2012-04-05 | 67268 | CARINO PROCESSING LTD.                               |
|             |               |  | 2012-04-05 | 67269 | PURE ICEBERG WATER INC.                              |
|             |               |  | 2012-04-09 | 67279 | HELI CONTRACTING<br>SERVICES INC                     |
|             |               |  | 2012-04-09 | 67280 | MERASHEEN OYSTER FARMS INC.                          |
|             |               |  | 2012-04-09 | 67270 | BDH Construction Ltd.                                |
|             |               |  | 2012-04-09 | 67278 | Adkins Contracting Ltd.                              |
|             |               |  | 2012-04-10 | 67288 | 67288 NEWFOUNDLAND AND<br>LABRADOR LTD.              |
|             |               |  | 2012-04-10 | 67290 | 67290 NEWFOUNDLAND AND<br>LABRADOR LIMITED           |
|             |               |  | 2012-04-10 | 67291 | 67291 NEWFOUNDLAND &<br>LABRADOR LIMITED             |
|             |               |  | 2012-04-10 | 67301 | HUMBER VALLEY<br>PHARMACY LTD.                       |
|             |               |  | 2012-04-10 | 67296 | KEITH COOMBS CONSULTING<br>INCORPORATED              |
|             |               |  | 2012-04-10 | 67287 | MELISSA ROBERGE<br>POWERSPORTS LTD.                  |
|             |               |  | 2012-04-10 | 67289 | SPRINGDALE BEVERAGE<br>COMPANY LIMITED               |
|             |               |  | 2012-04-10 | 67282 | Vigilant Management Inc.                             |
|             |               |  | 2012-04-10 | 67283 | Daisy Holdings Inc.                                  |
|             |               |  | 2012-04-10 | 67284 | Power Automation Limited                             |
|             |               |  | 2012-04-10 | 67285 | P&R Holdings Incorporated                            |
|             |               |  | 2012-04-10 | 67286 | Burton's Auto and Recreation Inc.                    |
|             |               |  | 2012-04-11 | 67307 | 67307 NEWFOUNDLAND AND<br>LABRADOR LIMITED           |
| <b>Date</b> | <b>Number</b> | <b>Company Name</b>                          |            |       |  |
| 2012-04-02  | 67250         | 67250 NEWFOUNDLAND &<br>LABRADOR INC.        |            |       |  |
| 2012-04-02  | 67244         | CERAMA PRO INCORPORATED                      |            |       |  |
| 2012-04-02  | 67245         | COLIN HOWSE CONSULTING, INC.                 |            |       |  |
| 2012-04-02  | 67246         | DARREN STONE & ASSOCIATES<br>INCORPORATED    |            |       |  |
| 2012-04-02  | 67248         | FAIR HAVEN RESOURCES INC.                    |            |       |  |
| 2012-04-02  | 67243         | MAINLINE CONTRACTING INC.                    |            |       |  |
| 2012-04-02  | 67218         | JAYNE ENTERPRISES LIMITED                    |            |       |  |
| 2012-04-02  | 67230         | Central Sprayfoam Insulation Inc.            |            |       |  |
| 2012-04-02  | 67232         | Sky Developments Inc.                        |            |       |  |
| 2012-04-02  | 67235         | Dyer Group of Companies Incorporated         |            |       |  |
| 2012-04-02  | 67236         | Atsanik Scaffolding Ltd.                     |            |       |  |
| 2012-04-02  | 67237         | JKB Contracting Limited                      |            |       |  |
| 2012-04-02  | 67238         | 67238 NEWFOUNDLAND &<br>LABRADOR LIMITED     |            |       |  |
| 2012-04-02  | 67239         | Robert Short Holdings Limited                |            |       |  |
| 2012-04-02  | 67240         | Dredge & Short Enterprises Limited           |            |       |  |
| 2012-04-03  | 67257         | BOWRING PROPERTIES INC.                      |            |       |  |
| 2012-04-03  | 67255         | JLH DEVELOPMENTS LTD.                        |            |       |  |
| 2012-04-03  | 67241         | Helping Hands Quilters' Guild Inc.           |            |       |  |
| 2012-04-03  | 67242         | Spray & Seal Services Ltd.                   |            |       |  |
| 2012-04-03  | 67251         | Gecko North Holdings Inc.                    |            |       |  |
| 2012-04-04  | 67262         | FOK INVESTMENTS LIMITED                      |            |       |  |
| 2012-04-04  | 67266         | GOLDEN SEABREEZE SENIORS<br>CLUB INC.        |            |       |  |
| 2012-04-04  | 67260         | JONATHAN B. COOK<br>PROFESSIONAL CORPORATION |            |       |  |
| 2012-04-04  | 67261         | ROK INVESTMENTS LIMITED                      |            |       |  |

THE NEWFOUNDLAND AND LABRADOR GAZETTE

July 20, 2012

|            |       |   |            |       |  |
|------------|-------|---|------------|-------|--|
| 2012-04-11 | 67308 | 67308 NEWFOUNDLAND AND LABRADOR LIMITED                                 | 2012-04-18 | 67367 | 67367 NEWFOUNDLAND AND LABRADOR LIMITED              |
| 2012-04-11 | 67310 | AVALON PSYCHOLOGICAL SUPPORT SERVICES INC.                              | 2012-04-18 | 67369 | DUCKWORTH PROPERTY HOLDINGS INC.                     |
| 2012-04-11 | 67311 | BREATHLESS FILMS INC.   | 2012-04-18 | 67366 | PENNEY'S PLUMBING LTD.                               |
| 2012-04-11 | 67309 | CLARKE DISPUTE RESOLUTION INC.  | 2012-04-18 | 67368 | SHUGARUE'S CONVENIENCE INCORPORATED                  |
| 2012-04-11 | 67314 | PONDSIDE FISHERIES LIMITED  | 2012-04-18 | 67370 | TECH CONSTRUCTION (2012) LTD.                        |
| 2012-04-11 | 67306 | SHALIMAR STATION INC.   | 2012-04-18 | 67365 | ULTRA CLEAR HOLDINGS LTD                             |
| 2012-04-11 | 67313 | TUCKAMORE REAL ESTATE CONSULTANTS INC.                                  | 2012-04-18 | 67362 | DFB Hertel J.V. Inc.                                 |
| 2012-04-11 | 67295 | GGJ Holdings Ltd.   | 2012-04-18 | 67363 | Alik Hardware Inc.                                   |
| 2012-04-11 | 67297 | ANTHONY'S HOME FURNISHINGS INC.   | 2012-04-18 | 67364 | Airborne Automation Corporation                      |
| 2012-04-11 | 67298 | Janette & Bros. Enterprises Inc.  | 2012-04-19 | 67375 | FORTUNE PORT CORPORATION                             |
| 2012-04-11 | 67299 | Avalon Mountain Bike Association Inc.                                   | 2012-04-19 | 67378 | PRINCESS TRANSPORTATION INC.                         |
| 2012-04-11 | 67302 | Mercer's Paving Incorporated  | 2012-04-19 | 67371 | 67371 NEWFOUNDLAND & LABRADOR INC.                   |
| 2012-04-12 | 67321 | 67321 NEWFOUNDLAND AND LABRADOR INC.                                    | 2012-04-19 | 67372 | Russell Contracting Inc.                             |
| 2012-04-12 | 67328 | BEST ELLIOTT CONSULTING LTD.  | 2012-04-19 | 67373 | Tornat Services Limited                              |
| 2012-04-12 | 67323 | BURIN PENINSULA WASTE MANAGEMENT MUNICIPAL SERVICE DELIVERY CORPORATION | 2012-04-19 | 67374 | Haas Inspection Services Limited                     |
| 2012-04-12 | 67325 | LOCAL SERVICE DISTRICT OF PLEASANTVIEW INC.                             | 2012-04-20 | 67383 | SPARBLE CONSTRUCTION LIMITED                         |
| 2012-04-12 | 67327 | RED HARBOUR TRAIL ASSOCIATION INC.                                      | 2012-04-20 | 67379 | 67379 NEWFOUNDLAND & LABRADOR INC.                   |
| 2012-04-12 | 67320 | SEA FEVER SAFETY SOLUTIONS INC.   | 2012-04-20 | 67380 | EDR Enterprises Ltd.                                 |
| 2012-04-12 | 67326 | SHANAWDITHIT SHRINE CLUB INC.   | 2012-04-20 | 67381 | Campbell's Contracting Inc.                          |
| 2012-04-12 | 67329 | THREE M GAS BAR & CONVENIENCE INC.                                      | 2012-04-24 | 67396 | 67396 NEWFOUNDLAND AND LABRADOR LTD.                 |
| 2012-04-12 | 67319 | VENTUROUS INVESTMENTS INC.  | 2012-04-24 | 67395 | BREAKAWAY FOUNDATION INC.                            |
| 2012-04-12 | 67303 | 67303 NEWFOUNDLAND & LABRADOR INC.                                      | 2012-04-24 | 67392 | CONCEPTION BAY NORTH CONCRETE PUMPING INC.           |
| 2012-04-12 | 67304 | HSDD Contracting Limited  | 2012-04-24 | 67388 | DINKAR HOLDINGS INC                                  |
| 2012-04-12 | 67305 | The Southern Shore Softball Association Inc.                            | 2012-04-24 | 67397 | DORSET YOUTH JUSTICE INC.                            |
| 2012-04-12 | 67318 | 67318 NEWFOUNDLAND & LABRADOR INC.                                      | 2012-04-24 | 67389 | DR. FREDERIC PAULIN PROFESSIONAL MEDICAL CORPORATION |
| 2012-04-13 | 67337 | BUBBA'S TUBS & POOLS HOLDINGS INC.                                      | 2012-04-24 | 67399 | GRAND BANK HARBOUR AUTHORITY INC.                    |
| 2012-04-13 | 67336 | CLASS A SERVICING INC.  | 2012-04-24 | 67391 | NEW DAWN HOLDINGS INC.                               |
| 2012-04-13 | 67334 | FIRESIDE FOOD SERVICES LTD.   | 2012-04-24 | 67393 | OUTPORT WEDDINGS AND THINGS INC                      |
| 2012-04-13 | 67333 | GEOHEW MARINE INC.  | 2012-04-24 | 67390 | ROGERS BUSSEY ARENA INC.                             |
| 2012-04-13 | 67335 | PORTER MARINE LTD.  | 2012-04-24 | 67394 | TESSIER HOLDINGS CORPORATION                         |
| 2012-04-13 | 67324 | Walsh's Mechanical Services Inc.  | 2012-04-24 | 67382 | 67382 NEWFOUNDLAND & LABRADOR LIMITED                |
| 2012-04-13 | 67330 | Red Seal Electric Ltd.  | 2012-04-24 | 67385 | REPUBLIC SEASON 4 INC.                               |
| 2012-04-13 | 67331 | Seadrill Canada Ltd.  | 2012-04-24 | 67386 | Conscientia Management Services Inc.                 |
| 2012-04-16 | 67350 | 67350 NEWFOUNDLAND AND LABRADOR INC.                                    | 2012-04-25 | 67413 | Blandridge Consultants Ltd.                          |
| 2012-04-16 | 67351 | 67351 NEWFOUNDLAND AND LABRADOR INC.                                    | 2012-04-25 | 67408 | FIVE STAR RENOVATIONS (2012) INC.                    |
| 2012-04-16 | 67353 | 67353 NEWFOUNDLAND AND LABRADOR INC.                                    | 2012-04-25 | 67408 | JIN DRAGON RESTAURANT & TAKE-OUT INC.                |
| 2012-04-16 | 67349 | CAPTAIN WAYNE'S ENTERPRISES INC.  | 2012-04-25 | 67410 | K.P.M.N. CONSULTING & TAX SERVICES INC.              |
| 2012-04-16 | 67352 | TUCKAMORE C & E CORP.   | 2012-04-25 | 67414 | LUXURY LIMOS LTD.                                    |
| 2012-04-16 | 67332 | Wellside Consulting Limited   | 2012-04-25 | 67411 | NORTH STREET CONSULTING INC.                         |
| 2012-04-16 | 67345 | Parts Shop (2012) Limited   | 2012-04-25 | 67412 | Q.I. LIN INVESTMENTS INC.                            |
| 2012-04-16 | 67346 | Cyril M. Moore Contracting Limited                                      | 2012-04-25 | 67400 | Helen's Caring About You Inc.                        |
| 2012-04-16 | 67347 | Guardian Fisheries Limited  | 2012-04-25 | 67402 | 67402 NEWFOUNDLAND & LABRADOR INCORPORATED           |
| 2012-04-16 | 67348 | Hibbs Construction Company Ltd.   | 2012-04-25 | 67405 | True Path Instrumentation Services Inc.              |
| 2012-04-17 | 67358 | Sea Glass Inc   | 2012-04-26 | 67427 | 67427 NEWFOUNDLAND AND LABRADOR INC.                 |
| 2012-04-17 | 67359 | 67359 NEWFOUNDLAND & LABRADOR INC.                                      | 2012-04-26 | 67429 | BASECORP LOGISTICS (NL) INC.                         |
|            |       |   | 2012-04-26 | 67428 | CARTER INVESTMENTS LIMITED                           |
|            |       |   | 2012-04-26 | 67430 | FORTUNE PORT CORPORATION                             |
|            |       |   | 2012-04-26 | 67426 | GULL MARSH FISHERMAN'S COMMITTEE INC.                |
|            |       |   | 2012-04-26 | 67422 | SEA ARCH LIMITED                                     |
|            |       |   | 2012-04-26 | 67406 | 67406 NEWFOUNDLAND & LABRADOR CORP                   |

THE NEWFOUNDLAND AND LABRADOR GAZETTE  
July 20, 2012

|                                       |               |   |                      |       |   |
|---------------------------------------|---------------|---|----------------------|-------|---|
| 2012-04-26                            | 67409         | 67409 NEWFOUNDLAND & LABRADOR INC.              | 2012-04-16           | 48639 | Camery Ventures Inc.                                |
| 2012-04-26                            | 67417         | Katrina Investments Limited                     | 2012-04-16           | 41033 | Gander and Area Chamber of Commerce Inc.            |
| 2012-04-26                            | 67421         | LSE Restaurant Limited                          | 2012-04-16           | 26337 | ISLAND WOODWORKERS INC.                             |
| 2012-04-27                            | 67439         | ATLANTIC HSE ENERGY CONSULTING INC.             | 2012-04-16           | 16433 | LABRADOR INUIT ALCOHOL AND DRUG ABUSE PROGRAM       |
| 2012-04-27                            | 67434         | NIGHTLARK FISHERIES LTD.                        |                      |       | LABRADORIMIUT INUIT                                 |
| 2012-04-27                            | 67438         | NOEM INVESTMENTS INC.                           |                      |       | TALANATUNIK SUNATUINANIK                            |
| 2012-04-27                            | 67431         | 67431 NEWFOUNDLAND & LABRADOR INC.              |                      |       | ATUNINGIT   |
| 2012-04-30                            | 67444         | CLODE SOUND GUN CLUB INC.                       |                      |       | IKULAUMIGUTIKSANGINIK                               |
| 2012-04-30                            | 67432         | AKC Inspections Inc.                            | 2012-04-16           | 14832 | KAMAJIT   |
| 2012-04-30                            | 67435         | RANDY WALSH ELECTRIC INC.                       |                      |       | Newfoundland Aluminum Products Limited              |
| 2012-04-30                            | 67436         | Modern Millwork & Cabinetry Limited             | 2012-04-17           | 3536A | CEREBRAL PALSY ASSOCIATION OF NL INC.               |
| 2012-04-30                            | 67437         | NL HomeCheck Services Inc.                      | 2012-04-17           | 20163 | Hayes' Carpentry & Construction Limited             |
| 2012-04-30                            | 67440         | Abatement Technologies Inc                      | 2012-04-18           | 34312 | 34312 NEWFOUNDLAND & LABRADOR LTD.                  |
| 2012-04-30                            | 67441         | Vodun Automation Services Ltd.                  | 2012-04-18           | 35540 | A & R SERVICES LIMITED                              |
| Total Incorporations: 159             |               |   | 2012-04-18           | 29469 | ALLARD DISTRIBUTING LIMITED                         |
| <i>Corporations Act - Section 331</i> |               |   | 2012-04-18           | 65024 | BONAVISTA PENINSULA                                 |
| Local Revivals                        |               |   |                      |       | DIALYSIS COMMITTEE INC.                             |
| For the Month of: April 2012          |               |   | 2012-04-18           | 1505  | BUTLER ENTERPRISES (2012) LIMITED                   |
| <b>Date</b>                           | <b>Number</b> | <b>Company Name</b>                             | 2012-04-18           | 35915 | Mount Pearl Sport Alliance Inc.                     |
| 2012-04-02                            | 25989         | Howley, Talabany & Associates Limited           | 2012-04-18           | 52588 | RUBY MANOR LTD.                                     |
| 2012-04-04                            | 19333         | Office Rentals and Services Limited             | 2012-04-19           | 9347  | 10191 Newfoundland Limited                          |
| 2012-04-04                            | 34822         | Pine Line Properties Ltd.                       | 2012-04-20           | 65198 | C & S Development Ltd.                              |
| 2012-04-05                            | 48334         | HORSMAN ENTERPRISES INC.                        | 2012-04-20           | 65850 | COOZE'S CONTRACTING LIMITED                         |
| 2012-04-12                            | 44021         | BLUE MOON ENTERPRISES LTD.                      | 2012-04-20           | 56102 | D & D EXCAVATING AND TRUCKING LTD.                  |
| 2012-04-16                            | 16433         | LABRADOR INUIT ALCOHOL AND DRUG ABUSE PROGRAM   | 2012-04-20           | 11931 | G.J. Cahill & Company (1979) Limited                |
|                                       |               | LABRADORIMIUT INUIT                             | 2012-04-20           | 37375 | The Hub Trophies & Medical Supplies - Murphy's Ltd. |
|                                       |               | TALANATUNIK SUNATUINANIK                        | 2012-04-24           | 65563 | 65563 NEWFOUNDLAND AND LABRADOR LIMITED             |
|                                       |               | ATUNINGIT                                       | 2012-04-24           | 65566 | 65566 NEWFOUNDLAND AND LABRADOR LIMITED             |
|                                       |               | IKULAUMIGUTIKSANGINIK                           | 2012-04-24           | 67297 | ANTHONY'S HOME FURNISHINGS INC.                     |
|                                       |               | KAMAJIT   | 2012-04-24           | 47496 | ELECTRA SERVICES INC                                |
| Total Revivals: 6                     |               |   | 2012-04-24           | 66462 | Indian Head Refrigeration and Heating Ltd.          |
| <i>Corporations Act - Section 286</i> |               |   | 2012-04-24           | 60123 | NUKUM FORESTRY LTD.                                 |
| Local Amendments                      |               |   | 2012-04-25           | 66889 | 66889 NEWFOUNDLAND AND LABRADOR INC.                |
| For the Month of: April 2012          |               |   | 2012-04-25           | 11401 | Efford's Holdings Limited                           |
| <b>Date</b>                           | <b>Number</b> | <b>Company Name</b>                             | 2012-04-25           | 9352  | Progressive Management and Consulting Limited       |
| 2012-04-02                            | 31947         | ELLIOTT'S ENTERPRISES LIMITED                   | 2012-04-25           | 62765 | SPACES FIREPLACE AND CLOSET SOLUTIONS INC.          |
| 2012-04-02                            | 25989         | Howley, Talabany & Associates Limited           | 2012-04-26           | 5638  | Bonne Bay Pharmacy Limited                          |
| 2012-04-02                            | 43893         | SCOTT ANDERSON LTD.                             | 2012-04-26           | 65483 | Darman Properties Ltd.                              |
| 2012-04-04                            | 46285         | KIELTY PROPERTIES LIMITED                       | 2012-04-26           | 38022 | Pioneer Enterprises Limited                         |
| 2012-04-04                            | 27101         | TRAYTOWN BUILDERS LIMITED                       | 2012-04-27           | 29469 | ALLARD DISTRIBUTING LIMITED                         |
| 2012-04-04                            | 50328         | TWILIGHT ENTERPRISES (2012) LTD.                | 2012-04-27           | 67408 | JIN DRAGON RESTAURANT & TAKE-OUT INC.               |
| 2012-04-05                            | 59982         | 59982 NEWFOUNDLAND & LABRADOR LTD.              | 2012-04-27           | 64238 | TYJEN HOLDINGS LIMITED                              |
| 2012-04-05                            | 63755         | 63755 NEWFOUNDLAND & LABRADOR LTD.              | 2012-04-30           | 59763 | CMCL Investments Ltd.                               |
| 2012-04-05                            | 63762         | Aurora Property Management Ltd.                 | 2012-04-30           | 50255 | DR. RICHARD HARLEY HOLDINGS LIMITED                 |
| 2012-04-05                            | 39815         | Interex Systems Ltd.                            | 2012-04-30           | 60050 | HUMBER VALLEY GOLF INC.                             |
| 2012-04-09                            | 64717         | HOMELIFE ADVANTAGE REALTY INC.                  | 2012-04-30           | 38381 | JOHN HEARN ARCHITECT INCORPORATED                   |
| 2012-04-10                            | 36397         | BLACKSTOCK HOLDINGS LTD.                        | 2012-04-30           | 63685 | RYNIC HOMES LIMITED                                 |
| 2012-04-10                            | 16437         | GC RIEBER CANADA LTD.                           | Total Amendments: 57 |       |   |
| 2012-04-11                            | 42061         | "Your Strength - Is - Our Strength "Club "Inc." |                      |       |   |
| 2012-04-13                            | 27909         | RESOURCE VENTURES LTD                           |                      |       |   |
| 2012-04-16                            | 60685         | 60685 NEWFOUNDLAND & LABRADOR INC.              |                      |       |   |

THE NEWFOUNDLAND AND LABRADOR GAZETTE  
July 20, 2012

*Corporations Act - Section 335*  
Local Dissolutions  
For the Month of: April 2012

| Date       | Number | Company Name   |
|------------|--------|--|
| 2012-04-02 | 34724  | Daly Specialty Contracting Ltd.  |
| 2012-04-02 | 61739  | DTS CONSULTING INC   |
| 2012-04-02 | 62421  | HN HOLDINGS LTD.   |
| 2012-04-02 | 38514  | NEW-LAB Construction Ltd.  |
| 2012-04-04 | 65713  | 65713 NEWFOUNDLAND & LABRADOR LTD  |
| 2012-04-04 | 51719  | Kirby Design Services Ltd.   |
| 2012-04-04 | 60699  | MCL CONSTRUCTION LTD.  |
| 2012-04-04 | 58171  | PASADENA FOODS INC.  |
| 2012-04-04 | 17474  | The Order of United Commercial Travelers of America, Bay of Islands, Council 865 |
| 2012-04-04 | 48615  | WCPM Trucking Limited  |
| 2012-04-05 | 4623   | BETTER BUSINESS BUREAU OF NEWFOUNDLAND & LABRADOR LIMITED                        |
| 2012-04-05 | 55468  | Carew Security Inc   |
| 2012-04-05 | 59238  | Clixtec IT Consulting Inc.   |
| 2012-04-10 | 59365  | H. SINGH ENTERPRISES INC.  |
| 2012-04-11 | 67039  | DOWN SOUTH INC.  |
| 2012-04-12 | 61861  | TRIPLE M. CONSTRUCTION INC.  |
| 2012-04-13 | 62946  | Indigo Research Services Inc.  |
| 2012-04-16 | 55290  | GOD'S COVE TOURS INC.  |
| 2012-04-17 | 31828  | BAY D'ESPOIR MARINE LIMITED  |
| 2012-04-18 | 53962  | A-1 CHEM INTERNATIONAL INC.  |
| 2012-04-18 | 61199  | D.J.'s Burner Service Ltd  |
| 2012-04-18 | 38414  | Salon 94 (1997) Ltd.   |
| 2012-04-19 | 54791  | LENA D ENTERPRISES INC   |
| 2012-04-19 | 58741  | Trinity Bay Recycling Ltd.   |
| 2012-04-20 | 51945  | BELL ISLAND FOODLAND LIMITED   |
| 2012-04-24 | 17754  | C. J. ORAM & SONS LIMITED  |
| 2012-04-24 | 15013  | K. ROY SMITH ENTERPRISES LIMITED   |
| 2012-04-25 | 36252  | CCM CONSTRUCTION INC.  |
| 2012-04-25 | 51804  | DLM CONTRACTING LTD.   |
| 2012-04-25 | 58386  | KULLIK CONSULTING INC.   |
| 2012-04-26 | 56011  | AT ENTERTAINMENT INC.  |
| 2012-04-26 | 43296  | Excalibur Properties Inc.  |
| 2012-04-26 | 67375  | FORTUNE PORT CORPORATION   |
| 2012-04-26 | 46883  | MOTION MARKETING INC.  |
| 2012-04-26 | 50918  | WANTED DEAD OR ALIVE INC.  |
| 2012-04-27 | 60411  | MARTS CONSTRUCTION LIMITED   |
| 2012-04-30 | 41256  | Pro Truss Systems Inc.   |
| 2012-04-30 | 54766  | SEA BREEZE TAKE-OUT INC.   |
| 2012-04-30 | 4335   | W.P. Moss Limited  |

Total Dissolutions: 39

*Corporations Act - Section 299*  
Local Discontinuances  
For the Month of: April 2012

| Date       | Number | Company Name          |
|------------|--------|-----------------------|
| 2012-04-27 | 58232  | FOGI ENTERPRISES INC. |

Total Discontinuances: 1

*Corporations Act - Section 294*  
Local Amalgamations  
For the Month of: April 2012

| Date       | Number | Company Name            |
|------------|--------|-------------------------|
| 2012-04-01 | 67231  | A.S.E. ENTERPRISES LTD. |
| From:      | 33408  | A.S.E. ENTERPRISES LTD. |
|            | 59307  | SP VENTURES INC.        |

|            |       |  |
|------------|-------|--|
| 2012-04-01 | 67219 | BETTER CONTRACTING LIMITED             |
| From:      | 47191 | Better Contracting Limited             |
|            | 47280 | Pro-Matic Transmissions (2003) Limited |

|            |       |                                   |
|------------|-------|-----------------------------------|
| 2012-04-01 | 67228 | NEWFOUND DISPOSAL SYSTEMS LIMITED |
| From:      | 64426 | MIJA HOLDINGS LIMITED             |
|            | 64425 | MIJA INVESTMENTS LIMITED          |
|            | 65564 | MILTON R INVESTMENTS LIMITED      |
|            | 21059 | Newfound Disposal Systems Limited |

|            |       |                         |
|------------|-------|-------------------------|
| 2012-04-01 | 67234 | TOPSAIL DECOR LIMITED   |
| From:      | 22167 | DECORATING DESIGNS INC. |
|            | 8419  | TOPSAIL DECOR LIMITED   |

|            |       |                          |
|------------|-------|--------------------------|
| 2012-04-17 | 67361 | THE REPAIR PLACE LIMITED |
| From:      | 37621 | J.R.D. HOLDINGS LIMITED  |
|            | 18230 | The Repair Place Limited |

Total Amalgamations: 5

*Corporations Act - Section 286*  
Local Name Changes  
For the Month of: April 2012

| Number     | Company Name                                |
|------------|---|
| 16437      | GC RIEBER CANADA LTD.                       |
| 2012-04-10 | From: GC RIEBER CARINO LTD.                 |
| 56102      | D & D EXCAVATING AND TRUCKING LTD.          |
| 2012-04-20 | From: D & D MINI EXCAVATING LTD.            |
| 65563      | 65563 NEWFOUNDLAND AND LABRADOR LIMITED     |
| 2012-04-24 | From: MILTON R HOLDINGS LIMITED             |
| 65566      | 65566 NEWFOUNDLAND AND LABRADOR LIMITED     |
| 2012-04-24 | From: MARVIN R INVESTMENTS LIMITED          |
| 67297      | ANTHONY'S HOME FURNISHINGS INC.             |
| 2012-04-24 | From: 67297 NEWFOUNDLAND AND LABRADOR INC.  |
| 62765      | SPACES FIREPLACE AND CLOSET SOLUTIONS INC.  |
| 2012-04-25 | From: FIREPLACE & CLOSET SOLUTIONS INC.     |
| 67408      | JIN DRAGON RESTAURANT & TAKE-OUT INC.       |
| 2012-04-27 | From: LIN DRAGON RESTAURANT & TAKE-OUT INC. |
| 50255      | DR. RICHARD HARLEY HOLDINGS LIMITED         |
| 2012-04-30 | From: DR. RICHARD HARLEY PMC INC.           |
| 60050      | HUMBER VALLEY GOLF INC.                     |
| 2012-04-30 | From: OKE CONSULTANTS LTD.                  |
| 63685      | RYNIC HOMES LIMITED                         |
| 2012-04-30 | From: Barry Andrews Enterprises Ltd.        |

Total Name Changes: 10

THE NEWFOUNDLAND AND LABRADOR GAZETTE

July 20, 2012

*Corporations Act - Section 443*  
Extra-Provincial Registrations  
For the Month of: April 2012

| Date       | Number | Company Name   |
|------------|--------|--|
| 2012-04-02 | 67247  | A. F. MACPHEE HOLDINGS LIMITED   |
| 2012-04-02 | 67249  | SOFTCHOICE CORPORATION   |
| 2012-04-03 | 67256  | KONECRANES CANADA INC.   |
| 2012-04-03 | 67254  | MT&L PUBLIC RELATIONS LIMITED  |
| 2012-04-04 | 67263  | MR. LUBE CANADA GP INC.  |
| 2012-04-05 | 67275  | RETAIL DATA, INC.<br>DONNÉES DE DÉTAIL, INC.                                       |
| 2012-04-09 | 67281  | IBFX CANADA LIMITED  |
| 2012-04-10 | 67300  | CARRIER ENTERPRISE CANADA<br>(G.P.), INC.  |
| 2012-04-10 | 67292  | INTERNATIONAL SOS CANADA<br>COMPANY  |
| 2012-04-10 | 67294  | REMOTE ACCESS<br>TECHNOLOGY INC.   |
| 2012-04-10 | 67293  | SEARCH MINERALS INC.   |
| 2012-04-11 | 67312  | D-J COMPOSITES, INC.   |
| 2012-04-11 | 67315  | PROSTATE CANCER CANADA   |
| 2012-04-12 | 67322  | MELMART DISTRIBUTORS INC.  |
| 2012-04-13 | 67341  | MORROW EQUIPMENT<br>COMPANY, L.L.C.  |
| 2012-04-13 | 67339  | SAZERAC DISTILLERS OF<br>CANADA INC.<br>LES DISTILLERIES SAZERAC DU<br>CANADA INC. |
| 2012-04-13 | 67340  | SAZERAC OF CANADA INC.<br>SAZERAC DU CANADA INC.                                   |
| 2012-04-13 | 67338  | TYCO INTEGRATED SECURITY<br>CANADA, INC./SECURITE<br>INTEGREE TYCO CANADA, INC.    |
| 2012-04-13 | 67344  | VECTOR CORROSION<br>TECHNOLOGIES LTD.  |
| 2012-04-16 | 67355  | ADP CANADA INSURANCE<br>AGENCY INC.  |
| 2012-04-16 | 67354  | GREENFIELD EXPLORATION<br>(CANADA) LTD.  |
| 2012-04-19 | 67377  | MICHAEL VUKETS &<br>ASSOCIATES LTD.  |
| 2012-04-20 | 67384  | 0840559 B.C. LTD.  |
| 2012-04-24 | 67398  | 9261-6168 QUÉBEC INC.  |
| 2012-04-24 | 67404  | HAE CANADA INC.  |
| 2012-04-25 | 67419  | ALLSTEEL COATINGS LIMITED  |
| 2012-04-25 | 67416  | BROMPTON FLOW-THROUGH<br>MANAGEMENT LIMITED  |
| 2012-04-25 | 67415  | EMPIRE LIFE INVESTMENTS INC.<br>PLACEMENTS EMPIRE VIE INC.                         |
| 2012-04-25 | 67418  | MORTGAGESTOGO.CA INC.  |
| 2012-04-26 | 67425  | 660412 N.B. Inc.   |
| 2012-04-26 | 67424  | BAROCCON WALL SYSTEM INC.  |
| 2012-04-26 | 67423  | CG POWER SYSTEMS CANADA INC.   |
| 2012-04-27 | 67433  | CHESTERFIELD CANADA INC.   |
| 2012-04-30 | 67442  | TGR SOLUTIONS INC.   |
| 2012-04-30 | 67443  | WONDERCODE CONSULTING LTD.   |

Total Registrations: 35

*Corporations Act - Section 451*  
Extra-Provincial Name Changes  
For the Month of: April 2012

| Number           | Company Name   |
|------------------|--|
| 63043            | SPICERS CANADA LIMITED                               |
| 2012-04-09 From: | PAPERLINX CANADA LIMITED<br>PAPERLINX CANADA LIMITÉE |

|                  |   |
|------------------|---|
| 51354            | FIRST DURHAM INSURANCE &<br>FINANCIAL LTD.                                    |
| 2012-04-12 From: | BROWN PINEO INSURANCE AND<br>FINANCIAL BROKERS LTD.                           |
| 2012-04-12 From: | FIRST DURHAM INSURANCE AND<br>FINANCIAL LTD.                                  |
| 51354            | FIRST DURHAM INSURANCE AND<br>FINANCIAL LTD.                                  |
| 2012-04-12 From: | BROWN PINEO INSURANCE AND<br>FINANCIAL BROKERS LTD.                           |
| 2012-04-12 From: | FIRST DURHAM INSURANCE AND<br>FINANCIAL LTD.                                  |
| 5260F            | FIERA CAPITAL CORPORATION/<br>CORPORATION FIERA CAPITAL<br>FIERA SCEPTRE INC. |
| 2012-04-25 From: |   |
| 2929D            | ATLANTIC POWER GP INC.  |
| 2012-04-26 From: | CPI INCOME SERVICES LTD.  |
| 59798            | SFAA SERVICES FINANCIERS INC.   |
| 2012-04-30 From: | SERVICES FINANCIERS<br>AXA ASSURANCES INC.                                    |
| 65836            | SSQ, SOCIÉTÉ<br>D'ASSURANCE INC.<br>SSQ, INSURANCE<br>COMPANY INC.            |
| 2012-04-30 From: | AXA ASSURANCE VIE<br>INC. / AXA LIFE<br>INSURANCE INC.                        |

Total Name Changes: 7

*Corporations Act - Section 294*  
Extra-Provincial Registrations for Amalgamation  
For the Month of: April 2012

| Date       | Number | Company Name   |
|------------|--------|--|
| 2012-04-02 | 67252  | 7594828 CANADA INC.  |
| From:      | 2234D  | TRUSERV CANADA INC.  |
| 2012-04-02 | 67253  | 7594828 CANADA INC.  |
| From:      | 67252  | 7594828 CANADA INC.  |
| 2012-04-04 | 67264  | AGF INVESTMENTS<br>INC./PLACEMENTS AGF INC.  |
| From:      | 60629  | AGF INVESTMENTS<br>INC./PLACEMENTS AGF INC.  |
| 2012-04-04 | 67265  | OLDCASTLE BUILDING<br>PRODUCTS CANADA, INC. LES<br>MATÉRIAUX DE CONSTRUCTION<br>OLDCASTLE CANADA, INC. |
| From:      | 3686D  | Oldcastle Building Products Canada, Inc.<br>Les Matériaux de Construction Oldcastle<br>Canada, Inc.    |
| 2012-04-05 | 67277  | GANOTEC INC.   |
| From:      | 64967  | GANOTEC INC.   |
| 2012-04-05 | 67276  | PETER KIEWIT<br>INFRASTRUCTURE CO.   |
| From:      | 6422F  | PETER KIEWIT<br>INFRASTRUCTURE CO.   |

2012-04-11 67317 DILLON CONSULTING LIMITED  
LES CONSULTANTS DILLON  
LIMITEE  
From: 3764D DILLON CONSULTING LIMITED

2012-04-11 67316 SIMMONS CANADA INC.  
From: 55185 SIMMONS CANADA INC.  
2012-04-13 67343 THE GRAY GROUP INC.  
From: 3580F Belvedere Holding Corporation  
54860 CONNOR HOLDINGS LTD.

2012-04-13 67342 VOGUE OPTICAL INC.  
From: 6069F VOGUE OPTICAL  
INCORPORATED

2012-04-16 67356 JMAX GLOBAL  
DISTRIBUTORS INC.  
From: 59223 JMAX GLOBAL  
DISTRIBUTORS INC.

2012-04-17 67360 CREDIT CANADA DEBT  
SOLUTIONS INC.  
From: 54797 INCHARGE DEBT SOLUTIONS  
CANADA

2012-04-19 67376 CANADIAN NATURAL  
RESOURCES LIMITED  
From: 57600 CANADIAN NATURAL  
RESOURCES LIMITED

2012-04-24 67401 GROUPWORKS FINANCIAL CORP.  
From: 58943 GROUPWORKS FINANCIAL CORP.

2012-04-24 67403 PEOPLE CORPORATION  
From: 67401 GROUPWORKS FINANCIAL CORP.

2012-04-25 67420 ENGLOBE CORP.  
From: 63381 ENGLOBE CORP.

Total Registrations for Amalgamation: 16

SERVICE NL  
Dean Doyle, Registrar of Companies

July 20

## NOTICE

IN THE MATTER of the *Corporations Act*, RSNL 1990, cC-36 (the "Act")

AND

IN THE MATTER of 52545 NEWFOUNDLAND & LABRADOR INC., in voluntary dissolution

TAKE NOTICE that following receipt of a special resolution of the Shareholders of 52545 NEWFOUNDLAND & LABRADOR INC. (the "Corporation") passed on the 13<sup>th</sup> day of July, 2012 to such effect, the Registrar of Corporations (NL) has issued a Certificate of Intent to Dissolve the Corporation, on a voluntary basis, which Certificate is dated the 13<sup>th</sup> day of July, 2012.

AND FURTHER TAKE NOTICE that in accordance with the Act and the Resolution, all of the undertaking,

properties, assets and liabilities of the Corporation shall now be distributed and discharged.

ACCORDINGLY, all persons claiming to be creditors of or have any claims or demands upon or affecting the Corporation, in voluntary dissolution, and who have not otherwise been notified and satisfactorily dealt with in this transaction to date are requested to send particulars of such demand to the undersigned Solicitors on or before the 30<sup>th</sup> day of July, 2012.

DATED at St. John's, Newfoundland and Labrador, Canada, this 16<sup>th</sup> day of July, 2012.

BENSON BUFFETT PLC INC.  
Solicitors for the Corporation  
PER: Beth A. Sheppard

ADDRESS FOR SERVICE:  
P.O. Box 1538  
St. John's, NL A1C 5N8  
Tel: 709-579-2081  
Fax: 709-579-2647

July 20

## MINERAL ACT

### NOTICE

Published in accordance with section 62 of CNLR 1143/96 under the *Mineral Act*, cM-12, RSNL 1990 as amended.

Mineral rights to the following mineral licenses have reverted to the Crown:

|                 |                    |
|-----------------|--------------------|
| Mineral License | 011690M            |
| Held by         | Keels Venture Inc. |
| Situate near    | Keels, Eastern NL  |
| On map sheet    | 02C/11             |

|                      |                              |
|----------------------|------------------------------|
| A portion of license | 019372M                      |
| Held by              | Crosshair Energy Corporation |
| Situate near         | Victoria Lake, Central NL    |
| On map sheet         | 12A/06                       |

more particularly described in an application on file at Department of Natural Resources

|                      |                              |
|----------------------|------------------------------|
| A portion of license | 020293M                      |
| Held by              | Crosshair Energy Corporation |
| Situate near         | Noel Pauls Brook, Central NL |
| On map sheet         | 12A/16                       |

more particularly described in an application on file at Department of Natural Resources

|                 |                              |
|-----------------|------------------------------|
| Mineral License | 020294M                      |
| Held by         | Crosshair Energy Corporation |
| Situate near    | Exploits River, Central NL   |
| On map sheet    | 12A/16                       |

|                 |                                  |
|-----------------|----------------------------------|
| Mineral License | 010581M                          |
| Held by         | Noel, Nathaniel                  |
| Situate near    | Betts Cove, Baie Verte Peninsula |
| On map sheet    | 02E/13                           |

THE NEWFOUNDLAND AND LABRADOR GAZETTE

July 20, 2012

|  |  |   |  |
|--|--|---|--|
| Mineral License<br>Held by<br>Situates near<br>On map sheet  | 010678M<br>Playfair Mining Ltd.<br>Granite Lake, Central NL<br>12A/02            | Mineral License<br>Held by<br>Situates near<br>On map sheet | 017240M<br>Fraser, Dean<br>Grand Le Pierre, Fortune Bay<br>01M/10                  |
| Mineral License<br>Held by<br>Situates near<br>On map sheet  | 017569M<br>Crosshair Energy Corporation<br>Otter Lake<br>13K/03 13K/02 13K/06    | Mineral License<br>Held by<br>Situates near<br>On map sheet | 017268M<br>Fraser, Dean<br>Grand Le Pierre, Fortune Bay<br>01M/10                  |
| A portion of license<br>Held by<br>Situates near<br>On map sheet<br>more particularly described in an application on file at Department of Natural Resources | 016820M<br>Crosshair Energy Corporation<br>Makkovik River<br>13J/12              | Mineral License<br>Held by<br>Situates near<br>On map sheet | 017282M<br>Ryan, Kevin<br>Hawke Hill, Avalon Peninsula<br>01N/06                   |
| Mineral License<br>Held by<br>Situates near<br>On map sheet  | 011880M<br>Quinlan, Roland<br>Northwest Gander River, Central NL<br>02D/05       | Mineral License<br>Held by<br>Situates near<br>On map sheet | 017485M<br>KAT Gold Holdings Corp.<br>Rocky Pond, Central NL<br>12H/08             |
| Mineral License<br>Held by<br>Situates near<br>On map sheet  | 013270M<br>Alterra Resources Inc.<br>Pilleys Island, Central NL<br>02E/05 02E/12 | Mineral License<br>Held by<br>Situates near<br>On map sheet | 018904M<br>Quest Rare Minerals Ltd.<br>Lac Chaves<br>13L/13                        |
| Mineral License<br>Held by<br>Situates near<br>On map sheet  | 013559M<br>Ryan, Kevin<br>Northwest Pond, Eastern NL<br>02F/04                   | Mineral License<br>Held by<br>Situates near<br>On map sheet | 017501M<br>Budgells Equipment & Rentals Ltd.<br>Signal Hill<br>23I/09              |
| Mineral License<br>Held by<br>Situates near<br>On map sheet  | 019327M<br>Crosshair Energy Corporation<br>Exploits River, Central NL<br>12A/16  | Mineral License<br>Held by<br>Situates near<br>On map sheet | 017505M<br>Budgells Equipment & Rentals Ltd.<br>Signal Hill<br>23I/09              |
| Mineral License<br>Held by<br>Situates near<br>On map sheet  | 014756M<br>Furlong, Gerard<br>Traverspine River<br>13F/01                        | Mineral License<br>Held by<br>Situates near<br>On map sheet | 017507M<br>Lewis, Donna<br>Signal Hill<br>23I/10 23I/09                            |
| Mineral License<br>Held by<br>Situates near<br>On map sheet  | 014757M<br>Furlong, Gerard<br>Traverspine River<br>13F/01                        | Mineral License<br>Held by<br>Situates near<br>On map sheet | 017508M<br>Lewis, Donna<br>Signal Hill<br>23I/10 23I/09                            |
| Mineral License<br>Held by<br>Situates near<br>On map sheet  | 014758M<br>Furlong, Gerard<br>Traverspine River<br>13F/01                        | Mineral License<br>Held by<br>Situates near<br>On map sheet | 017511M<br>Lewis, Donna<br>Signal Hill Area<br>23I/10                              |
| A portion of license<br>Held by<br>Situates near<br>On map sheet<br>more particularly described in an application on file at Department of Natural Resources | 015760M<br>Chan, Lai Lai<br>Baie Verte Area<br>12H/16                            | Mineral License<br>Held by<br>Situates near<br>On map sheet | 017512M<br>Lewis, Donna<br>Signal Hill Area<br>23I/08 23I/10 23I/09                |
| Mineral License<br>Held by<br>Situates near<br>On map sheet  | 017972M<br>White, Jason<br>Fleur De Lys, Baie Verte Peninsula<br>12I/01          | Mineral License<br>Held by<br>Situates near<br>On map sheet | 018236M<br>Unity Resources Inc.<br>White Hills, Great Northern Peninsula<br>02M/05 |
| Mineral License<br>Held by<br>Situates near<br>On map sheet  | 015960M<br>Stone, Albert<br>Mortier, Burin Peninsula<br>01M/03                   | Mineral License<br>Held by<br>Situates near<br>On map sheet | 018237M<br>Unity Resources Inc.<br>White Hills, Great Northern Peninsula<br>02M/05 |
|  |  | Mineral License<br>Held by<br>Situates near<br>On map sheet | 018238M<br>Unity Resources Inc.<br>White Hills, Great Northern Peninsula<br>02M/05 |

|   |   |
|---|---|
| Mineral License<br>Held by<br>Situates near<br>On map sheet | 018255M<br>Unity Resources Inc.<br>Tea Arm, Central NL<br>02E/06                  |
| Mineral License<br>Held by<br>Situates near<br>On map sheet | 018270M<br>Unity Resources Inc.<br>Hare Harbour Area<br>13H/10                    |
| Mineral License<br>Held by<br>Situates near<br>On map sheet | 018271M<br>Unity Resources Inc.<br>Hare Harbour Area<br>13H/10                    |
| Mineral License<br>Held by<br>Situates near<br>On map sheet | 018440M<br>Noel, Nathaniel<br>Rocky Pond Area, Central NL<br>02E/02               |
| Mineral License<br>Held by<br>Situates near<br>On map sheet | 018484M<br>Rose, Shawn<br>Southwest Brook, Western NL<br>12A/05                   |
| Mineral License<br>Held by<br>Situates near<br>On map sheet | 018717M<br>Quinlan, Andrew<br>Glenwood, Central NL<br>02D/15                      |
| Mineral License<br>Held by<br>Situates near<br>On map sheet | 018718M<br>Teck Cominco Limited<br>Tally Pond, Central NL<br>12A/09               |
| Mineral License<br>Held by<br>Situates near<br>On map sheet | 018735M<br>Enertourbe Inc.<br>Northwest Gander River, Central NL<br>02D/11        |
| Mineral License<br>Held by<br>Situates near<br>On map sheet | 018737M<br>Enertourbe Inc.<br>Jubilee Lake, Central NL<br>02D/03                  |
| Mineral License<br>Held by<br>Situates near<br>On map sheet | 018738M<br>Specogna, Marino<br>Rainy Brook, Western NL<br>12B/02                  |
| Mineral License<br>Held by<br>Situates near<br>On map sheet | 018740M<br>Atlantic Antimony Ltd.<br>Northwest Gander River, Central NL<br>02D/11 |

The lands covered by this notice except for the lands within Exempt Mineral Lands, the Exempt Mineral Lands being described in CNLR 1143/96 and NLR 71/98, 104/98, 97/00, 36/01, 31/04, 78/06, 8/08 and 28/09 and outlined on 1:50 000 scale digital maps maintained by the Department of Natural Resources, will be open for staking after the hour of 9:00 a.m. on the 32<sup>nd</sup> clear day after the date of this publication.

DEPARTMENT OF NATURAL RESOURCES  
Jim Hinchey, P. Geo  
Manager - Mineral Rights

File #'s 774:3473, 4816, 4922, 5784, 5894, 5968, 6008, 6542, 6877, 8123, 8390, 8589, 9481, 9482, 9483;  
775:0047, 0071, 0187, 0820, 0847, 0856, 0989, 0990, 1005, 1009, 1011, 1012, 1015, 1016, 1603, 1604, 1605, 1618, 1633, 1634, 1796, 1839, 2049, 2050, 2067, 2069, 2070, 2072

July 20

## URBAN AND RURAL PLANNING ACT, 2000

### NOTICE OF REGISTRATION TOWN OF CONCEPTION BAY SOUTH MUNICIPAL PLAN 2011-2021 AND DEVELOPMENT REGULATIONS

TAKE NOTICE that the TOWN OF CONCEPTION BAY SOUTH Municipal Plan 2011-2021 and Development Regulations, adopted on the 17th day of April, 2012 and approved on the 9<sup>th</sup> day of May, 2012, have been registered by the Minister of Municipal Affairs.

In general terms, the Conception Bay South Municipal Plan lays out policies directing growth in the TOWN OF CONCEPTION BAY SOUTH.

In general term, the Conception Bay South Development Regulations establishes standards and conditions for all development within the TOWN OF CONCEPTION BAY SOUTH.

The Conception Bay South Municipal Plan 2011-2021 and Development Regulations come into legal effect on the day that this notice is published in *The Newfoundland and Labrador Gazette*. Anyone who wishes to inspect a copy of the Conception Bay South Municipal Plan 2011-2021 and Development Regulations may do so at the Conception Bay South Planning and Development Department, Villa Nova Plaza (2nd floor), 120 Conception Bay Highway, Conception Bay South, during normal working hours. The Conception Bay South Municipal Plan 2011-2021, Development Regulations and associated maps will also be posted on the Town's website at [www.conceptionbaysouth.ca](http://www.conceptionbaysouth.ca).

TOWN OF CONCEPTION BAY SOUTH  
Elaine Mitchell, Director of Planning and Development

July 20

### NOTICE OF REGISTRATION TOWN OF LABRADOR CITY DEVELOPMENT REGULATIONS AMENDMENT No. 18, 2012

TAKE NOTICE that the TOWN OF LABRADOR CITY Development Regulations Amendment No. 18, 2012, adopted by Council on the 19<sup>th</sup> day of June, 2012, has been registered by the Minister of Municipal Affairs.



In general terms, Development Regulations Amendment No. 18, 2012, will add apartment building(s) as a discretionary use to the Commercial Highway (CH) Land Use Zone Table. The amendment will also add a condition to limit apartment building(s) to an area extending from Bartlett Drive, along Circular Road including the Harrie Lake Business District.

The TOWN OF LABRADOR CITY Development Regulations Amendment No. 18, 2012, comes into effect on the day that this notice is published in *The Newfoundland and Labrador Gazette*. Anyone who wishes to inspect a copy of the Town of Labrador City Development Regulations Amendment No. 18, 2012, may do so at the Town Office, Labrador City during normal working hours.

TOWN OF LABRADOR CITY  
Diane Gear, Town Clerk

July 20

---

## LANDS ACT

### NOTICE OF INTENT

*Lands Act*, c36, SNL 1991, as amended

NOTICE IS HEREBY given that NALCOR ENERGY of St. John's intends to apply to the Department of Environment and Conservation, two months from the publication of this Notice, to acquire title, pursuant to Subsection 7(2)(a) of the *Lands Act*, to those pieces of Crown land situated within fifteen (15) metres of the waters of a brook flowing into the Churchill River in the Electoral District of Lake Melville for the purpose of a hydro-electric generating facility. The lands are described as follows:

#### Parcel A

All that land along the westerly bank of the brook flowing into the Churchill River near Muskrat Falls:

Beginning at coordinates of North 5900456 m and East 648588 m and ending at coordinates of North 5901501 m and East 649981 m;

*Bounded on the north by the southerly  
bank of the Churchill River  
for a distance of 15 metres;  
Bounded on the east by the bank of the brook  
for a distance of 2000 metres;  
Bounded on the south by Crown land*

*for a distance of 15 metres;  
Bounded on the west by Crown land  
for a distance of 2000 metres;  
and containing an area of  
approximately 3.0 hectares.*

#### Parcel B

All that land along the easterly bank of the brook flowing into the Churchill River near Muskrat Falls:

Beginning at coordinates of North 5900456 m and East 648588 m and ending at coordinates of North 5901501 m and East 649981 m;

*Bounded on the north by the southerly bank of the  
Churchill River for a distance of 15 metres;  
Bounded on the east by Crown land  
for a distance of 2000 metres;  
Bounded on the south by Crown land  
for a distance of 15 metres;  
Bounded on the west by easterly bank of the brook  
for a distance of 2000 metres;  
and containing an area of  
approximately 3.0 hectares.*

All coordinates are UTM Zone 20 NAD83 and are approximate as scaled from map NTS:13F02.

Any person wishing to object to the application must file the objection, in writing, within one month from the publication of this Notice, with reasons for it, to the Minister of Environment and Conservation, and mail to the nearest Regional Lands Office:

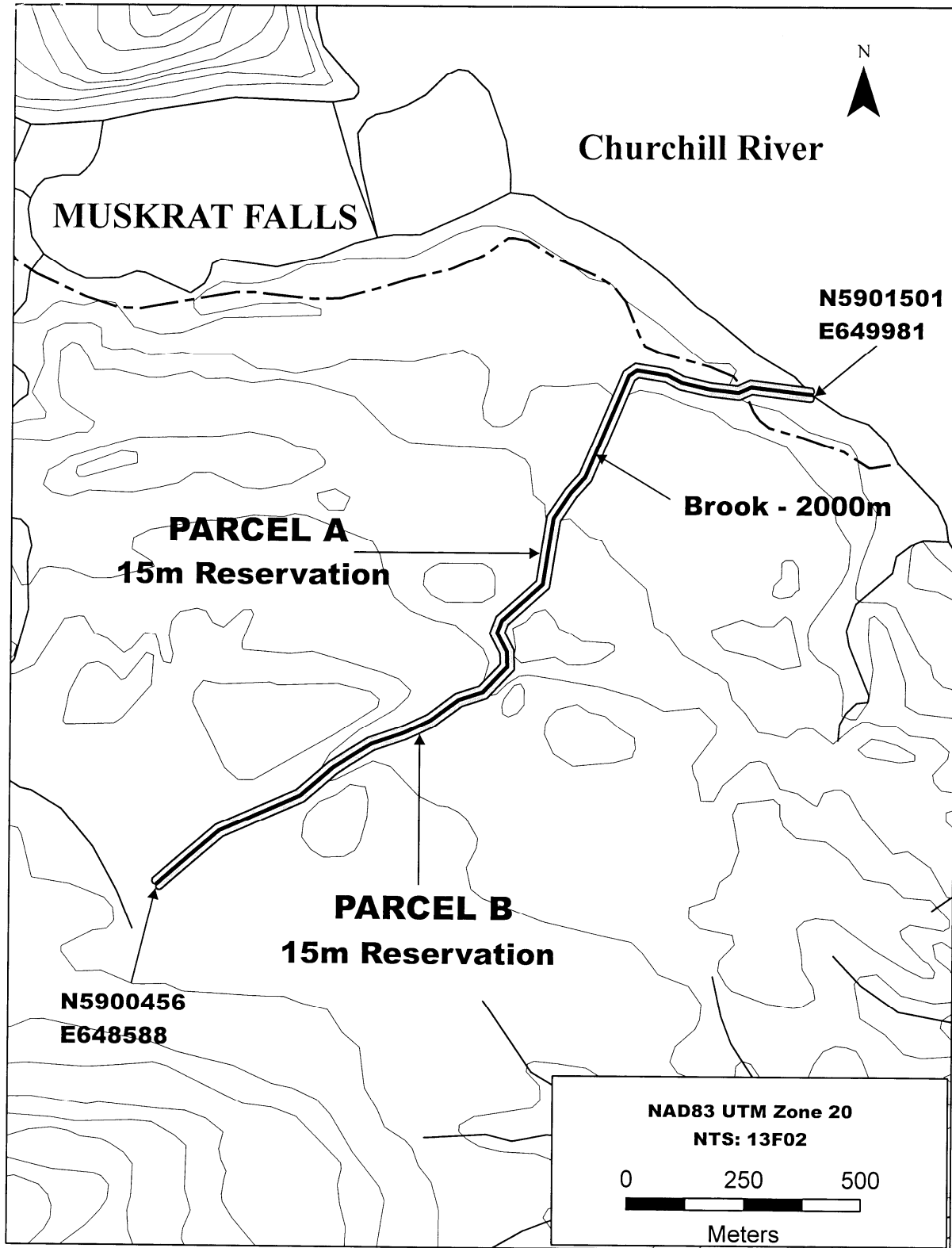
c/o Eastern Regional Lands Office, P.O. Box 8700, 5 Mews Place, St. John's, NL, A1B 4J6.

c/o Central Regional Lands Office, P.O. Box 2222, Gander, NL, A1V 1L7.

c/o Western Regional Lands Office, P.O. Box 2006, Noton Building, Corner Brook, NL, A2H 6J8.

c/o Labrador Regional Lands Office, P.O. Box 3014, Station "B", Happy Valley-Goose Bay, NL, A0P 1E0.

For further information on the proposed application, please contact: John Cooper at NALCOR ENERGY, Telephone number: (709) 737-1944.



**MECHANICS' LIEN ACT**  
**NOTICE OF INTENTION TO RELEASE**  
**MECHANICS' LIEN HOLDBACK**  
**PURSUANT TO SECTION 12**  
**OF THE MECHANICS' LIEN ACT**  
**RSNL cM-3 (THE "ACT")**

PURSUANT TO section 12 of the Act, and in relation to a contract entered into between VALE NEWFOUNDLAND AND LABRADOR LIMITED and Lockerbie and Hole Eastern Limited which contract is dated as of March 16<sup>th</sup>, 2010, notice is hereby given of the intention of VALE NEWFOUNDLAND AND LABRADOR LIMITED, to the release of mechanics' lien holdback funds 30 days following the date of this notice.

Dated at Long Harbour, NL, this 26<sup>th</sup> day of June, 2012.

FLUOR CANADA LIMITED  
Troy Gilson  
Project Contracts Manager  
(acting as Agent for Vale NL Limited)

July 6, 13, 20 & 27

---

**MOTOR CARRIER ACT**  
**PROVINCE OF**  
**NEWFOUNDLAND AND LABRADOR**  
**IN THE MATTER OF THE MOTOR CARRIER ACT,**  
**CHAPTER M-19, RSNL 1990**  
**AND**  
**IN THE MATTER OF THE APPLICATION FOR A**  
**MOTOR CARRIER CERTIFICATE**

**NOTICE OF APPLICATION**

TAKE NOTICE that CLIFFORD SHEPPARD, Box 3B40, 3 Tom Sheppard's Lane, Pools Island, NL A0G 3P0 has applied to the Board of Commissioners of Public Utilities under the provisions of the *Motor Carrier Act*, cM-19, RSNL 1990, for the issuance of a Certificate as a motor carrier to provide the following service:

*REGULAR PUBLIC PASSENGER BUS SERVICE*  
*for the transportation of passengers*  
*and their baggage at separate fares*

**from St. John's to Newtown and the reverse thereof. This authority will include pick up and drop off privileges at all points located on highway route number 320 between and including Gambo and Newtown and is restricted to the use of a vehicle with a maximum seating capacity of up to 48 passengers.**

The Board, having reviewed the application, has granted provisional approval and shall issue said Certificate, unless a person who objects to the application files with the Board a notice of objection to the application together with a written statement setting out in full the reasons why the application should be denied and relevant documentary

evidence. The objector must also serve on the applicant a copy of the notice of objection, the statement of reasons and the relevant documentary evidence filed with the Board by personal service or by prepaid, registered mail, at the address shown on the application, and proof of service must be supplied to the Board.

The evidence to be submitted must be received by the Board within twenty days of the date of the publication of this notice, at the office of the Board at Suite East 210, Prince Charles Building, Torbay Road, NL or by mail to P. O. Box 21040, St. John's, NL A1A 5B2.

Dated at St. John's this 16<sup>th</sup> day of July, 2012.

CLIFFORD SHEPPARD  
Signature of Applicant

July 20

---

**QUIETING OF TITLES ACT**

**2011 01G 6612**  
**IN THE SUPREME COURT OF NEWFOUNDLAND**  
**AND LABRADOR**  
**TRIAL DIVISION (GENERAL)**

**NOTICE OF APPLICATION UNDER THE**  
***QUIETING OF TITLES***  
**ACT, RSNL 1990, cQ-3, AS AMENDED**

NOTICE is hereby given to all parties that REGINALD LAWRENCE has applied to the Supreme Court of Newfoundland and Labrador, Trial Division (General), in the Judicial Centre of St. John's, to have the title to ALL THAT piece or parcel of land comprising approximately 26.13 acres, situate and being located on the southeast side of North River Road, in the Town of North River, in the Electoral District of Port de Grave, in the Province of Newfoundland and Labrador, Canada, as more particularly described in the indenture marked Schedule "A" hereto annexed (a modern survey of a portion of this approximately 26.13 acre piece or parcel of land comprising approximately 15.3131 acres is annexed hereto and marked as Schedule "B"), of which the said Applicant claims on his own behalf to be the owner, investigated and for a declaration that the said Applicant is the absolute owner thereof, free from those exceptions or qualifications contained in Section 22(1)(c), (d) and (e) of the *Quieting of Titles Act*, provided that said declaration shall be subject to the deed of conveyance dated July 15<sup>th</sup>, 2011, registered at the Registry of Deeds, Newfoundland and Labrador at registration number 469606. All persons having a claim adverse to this title claimed by the Applicant should file in the Registry of the Supreme Court of Newfoundland and Labrador, Trial Division (General), Judicial Centre of St. John's, at the Courthouse Building, Duckworth Street, St. John's, Newfoundland and Labrador, Canada, A1C 5M3, particulars of such adverse claim and serve same together with an Affidavit verifying same, on the undersigned solicitors for the Applicant on or before the 15<sup>th</sup> day of August, 2012 after which date no party having any claim

shall be permitted to file same or to be heard except by special leave of the Court subject to such conditions as the Court may deem just.

All such adverse claims shall then be investigated in such manner as the said Supreme Court may direct.

DATED at St. John's, in the Province of Newfoundland and Labrador, this 10<sup>th</sup> day of July, 2012.

COX & PALMER  
Solicitors for the Applicant  
PER: Christopher Peddigrew

**ADDRESS FOR SERVICE**

Suite 1000, Scotia Centre  
235 Water Street  
St. John's, NL A1C 1B6

Tel: (709) 570-5577  
Fax: (709) 726-3156

**SCHEDULE "A"**

ALL THAT piece or parcel of land situate and being at Hallstown, C.B., (North River C.B.) in the Electoral District of Port de Grave in the Province of Newfoundland and Labrador and being more particularly described as follows, that is to say: Beginning at an iron pin sunk in the ground on the southeasterly side of the road through Hallstown (66' wide) said pin being at the northeasterly corner of property now or formerly owned by John Newell proceeding thence north seventy-six degrees four minutes east two hundred sixty-five point two (265.2') feet and north seventy-two degrees east one hundred seventy-six point one (176.1') feet and north fifty-eight degrees twenty minutes east two hundred twenty-two point four (222.4') feet along the aforesaid southeasterly side of the road through Hallstown, thence south forty degrees fifteen minutes east two hundred sixty-nine point eight (269.8') feet and south twenty-four degrees twenty minutes east one thousand three hundred twenty-six point two (1326.2') feet along property now for formerly owned by James Hall, then south sixty-seven degrees fifty-four minutes west seven hundred thirty-three point eight (733.8') feet, thence north twenty-four degrees fifteen minutes west one thousand five hundred ninety-six (1596') feet along property now for formerly owned by the aforesaid John Newell to the point of beginning. The whole containing approximately twenty-six point one three (26.13) acres more or less. This land being more fully described and shown outlined on the plan hereto attached and dated March, 1973. All bearings are Magnetic. Reserving nevertheless a sixty-six (66') feet reservation for Northern Gut Main Brook shown outlined on the plan hereto attached.

**SCHEDULE "B"**

METES AND BOUNDS description of property surveyed for REG LAWRENCE, located at North River, in the Electoral District of Port De Grave, Province of

Newfoundland and Labrador and is more particularly described as follows:

All that lot, piece or parcel of land situate to the southeast of North River Road and northwest of a Reservation, 10m wide, on North River.

Beginning at a point, such point being a survey marker located at the westernmost angle of said described land and having NAD83 coordinates of N 5 265 762.684 and E 279 902.038 of the modified three degree transverse mercator projection for the Province of Newfoundland and Labrador;

THENCE running in an irregular line along said North River Road a distance of two hundred and two decimal zero meters (202.0m), more or less, to a point which bears north forty-two degrees thirty-three minutes fifty-three seconds east (N42°33'53"E) a distance of one hundred and ninety-nine decimal eight eight six meters (199.886m), from the previously described point,

THENCE running along the property of George C. and Jacomina Hall south sixty-seven degrees thirty-five minutes zero one seconds east (S67°35'01"E) a distance of eighty-two decimal two three two meters (82.232m);

THENCE running along said property of George C. and Jacomina Hall south fifty-three degrees fifty-one minutes fifty-two seconds east (S53°51'52"E) a distance of sixty-one decimal three six nine meters (61.369m);

THENCE running along said property of George C. and Jacomina Hall south forty-nine degrees forty-two minutes thirty-seven seconds east (S49°42'37"E) a distance of one hundred and forty-four decimal two five six meters (144.256m);

THENCE running in an irregular line along said Reservation 10m wide, on North River, distance of two hundred and eight decimal seven meters (208.7m), more or less, to a point which bears south forty-three degrees fifty-nine minutes twenty-six seconds west (S43°59'26"W) a distance of two hundred and one decimal seven four four meters (201.744m), from the previously described point;

THENCE running in an irregular line along a Reservation, 10m wide, on a Brook, a distance of thirty-eight decimal seven meters (38.7m), more or less, to a point which bears south eighty-eight degrees zero six minutes zero three seconds west (S88°06'03"W) a distance of thirty-six decimal eight eight nine meters (36.889m), from the previously described point;

THENCE running along the property, now or formerly, of John Newell north forty-nine degrees fifty-six minutes forty-nine seconds west (N49°56'49"W) a distance of thirty-three decimal three nine nine meters (33.399m);

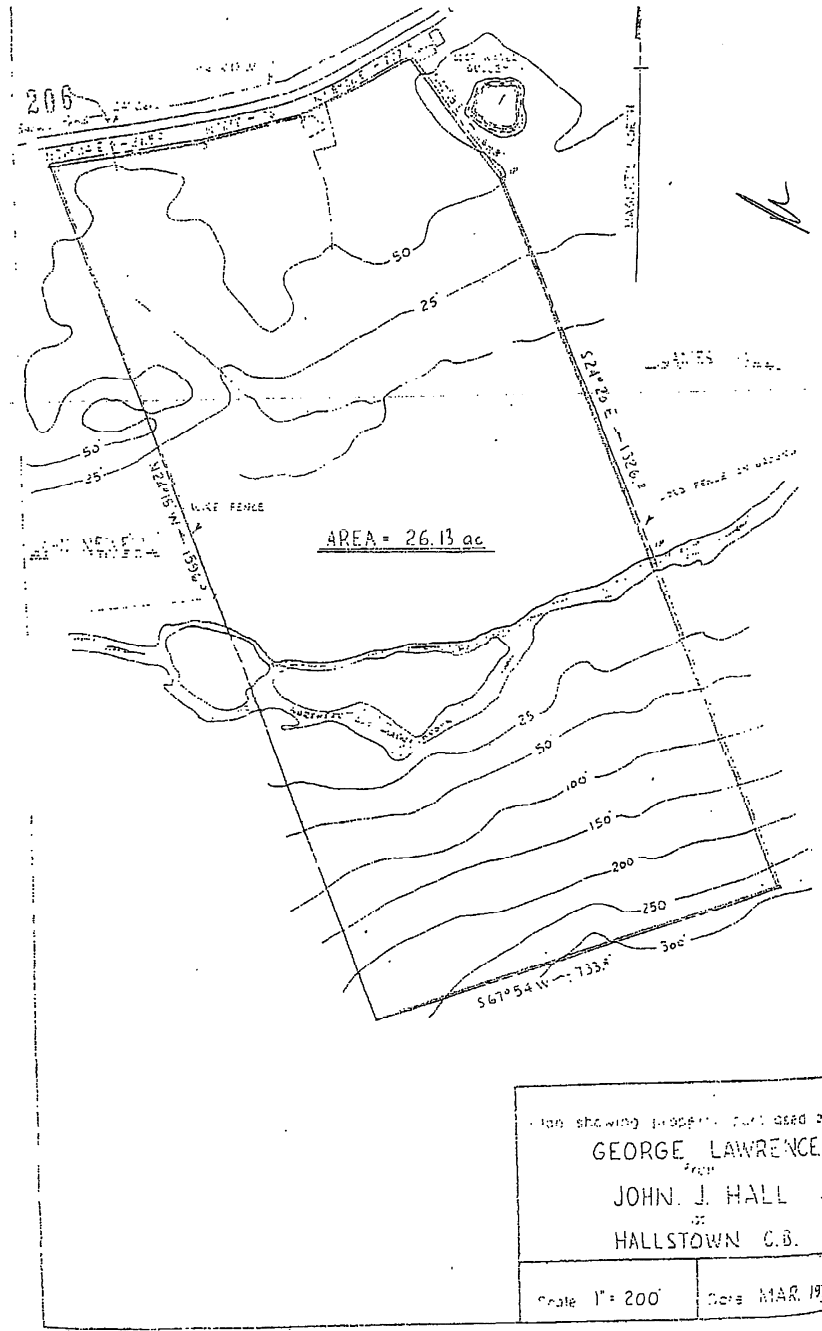
THENCE running along said property, now or formerly, of John Newell north forty-nine degrees fifty-eight minutes thirty seconds west (N49°58'30"W) a distance of forty-four decimal two seven six meters (44.276m);

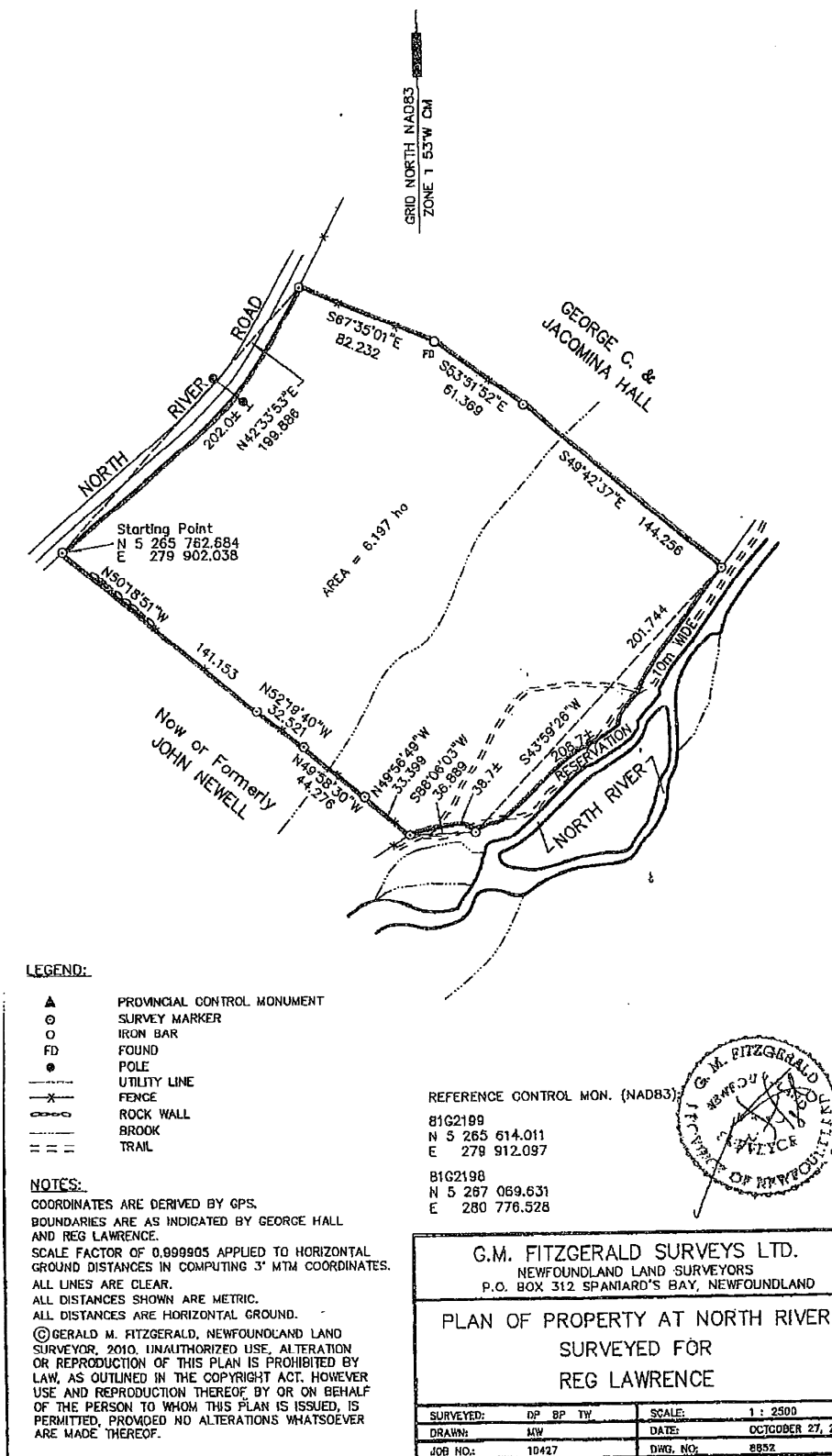
THENCE running along said property, now or formerly, of John Newell north fifty-two degrees nineteen minutes forty seconds west (N52°19'40"W) a distance of thirty-two decimal five two one meters (32.521m);

THENCE running along said property, now or formerly, of John Newell north fifty degrees eighteen minutes fifty-one seconds west (N50°18'51"W) a distance of one hundred and

forty-one decimal one five three meters (141.153m), more or less, to the point of commencement.

All bearings are referenced from the modified three degree transverse mercator projection having a central meridian of fifty-three degrees west longitude and the whole parcel containing a calculated area of 6.197 hectares, more or less, and is more particularly shown, outlined on the attached plan.





**TRUSTEE ACT**

**ESTATE NOTICE**

IN THE MATTER OF the Estate and Effects of the late  
EVELYN JENNINGS of Bridgeport, in the Province of  
Newfoundland and Labrador, Retired Person, Deceased.

All persons claiming to be creditors of or who have any  
claims or demands upon or affecting the Estate of  
EVELYN JENNINGS, the aforesaid deceased, who died at  
Twillingate, in the Province of Newfoundland and  
Labrador on or about the 22<sup>nd</sup> day of June, 2008, are hereby  
requested to send particulars thereof in writing, duly  
attested, to the undersigned Solicitor for the Executor of the  
Estate on or before the 10<sup>th</sup> day of August, 2012 after  
which date the Executor will proceed to distribute the said  
Estate having regard only to the claims of which he shall  
then have had notice.

DATED at the Town of Gander, Newfoundland and  
Labrador, this 10<sup>th</sup> day of July. 2012.

BONNELL LAW  
Solicitor for the Executor  
PER: R. Archibald Bonnell

ADDRESS FOR SERVICE:  
P.O. Box 563  
218 Airport Boulevard  
Gander, NL A1V 2E1

Tel: (709) 651-4949  
Fax: (709) 651-4951

July 20 & 27

---







# THE NEWFOUNDLAND AND LABRADOR GAZETTE

## PART II

### SUBORDINATE LEGISLATION

### FILED UNDER THE STATUTES AND SUBORDINATE LEGISLATION ACT

---

Vol. 87

ST. JOHN'S, FRIDAY, JULY 20, 2012

No. 29

---

### NEWFOUNDLAND AND LABRADOR REGULATION

NLR 56/12





## NEWFOUNDLAND AND LABRADOR REGULATION 56/12

*Direct Sales Regulations*  
under the  
*Consumer Protection and Business Practices Act*

*(Filed July 18, 2012)*

Under the authority of section 106 of the *Consumer Protection and Business Practices Act*, I make the following regulations.

Dated at St. John's, July 17, 2012.

Paul Davis  
Minister of Service Newfoundland and Labrador

### REGULATIONS

#### *Analysis*

- |                                     |                 |
|-------------------------------------|-----------------|
| 1. Short title                      | 3. Commencement |
| 2. Statement of cancellation rights |                 |

Short title

**1.** These regulations may be cited as the *Direct Sales Regulations*.

Statement of cancellation rights

**2.** (1) A statement of cancellation rights required under section 24 of the Act shall

(a) contain the words in the Schedule;

- (b) display the heading in not less than 12 point bold font; and
- (c) display the remainder of the information in not less than 10 point font.

(2) Where the statement of cancellation rights is not printed on the front page of the direct sales contract, the front page shall contain a statement, prominently displayed in at least a 12 point bold font indicating where on the direct sales contract the statement of cancellation rights is printed.

Commencement

**3. These regulations come into force on August 1, 2012.**

### **Schedule**

#### **Consumer's Right to Cancel**

You may cancel this contract from the day you enter into the contract until 10 days after you receive the contract. You do not need a reason to cancel.

If you do not receive the goods or services within 30 days of the date stated in the contract, you may cancel this contract within one year of the contract date. You lose that right if you accept delivery after the 30 days. There are other grounds for extended cancellation. For more information, you may contact the provincial consumer affairs office.

If you cancel this contract, the supplier has 15 days to refund your money and any trade-in, or the cash value of the trade in. You must then return the goods.

To cancel, you must give notice of cancellation at the address in this contract. You must give notice of cancellation by a method that will allow you to prove that you gave notice, including registered mail, fax or personal delivery.

**©William E. Parsons, Queen's Printer**



## Index

### PART I

|  |     |
|--|-----|
| Corporations Act – Notices.....                    | 269 |
| Lands Act – Notice .....                           | 277 |
| Mechanics’ Lien Act – Notice .....                 | 279 |
| Mineral Act – Notice .....                         | 274 |
| Motor Carrier Act – Notice .....                   | 279 |
| Quieting of Titles Act – Notice .....              | 279 |
| Urban and Rural Planning Act, 2000 – Notices ..... | 276 |
| Trustee Act – Notice .....                         | 283 |

### PART II

#### CONTINUING INDEX OF SUBORDINATE LEGISLATION

| Title of Act and<br>Subordinate Legislation<br>made thereunder | CNLR or<br>NL Reg. | Amendment | NL Gazette<br>Date & Page No. |
|--|--------------------|-----------|-------------------------------|
| <b>Consumer Protection and<br/>Business Practices Act</b>      |                    |           |                               |
| Direct Sales Regulations                                       | NLR 56/12          | New       | July 20/12 p. 795             |

*The Newfoundland and Labrador Gazette* is published from the office of William E. Parsons, Queen's Printer.

Copy for publication must be received by **Friday, 4:30 p.m.**, seven days before publication date to ensure inclusion in next issue.

Advertisements must be submitted in either PDF format or as a MSWord file. When this is not possible, advertisements must be either typewritten or printed legibly, separate from covering letter. Number of insertions required must be stated and the names of all signing officers typewritten or printed.

Copy may be mailed to the address below, faxed to (709) 729-1900 or emailed to [queensprinter@gov.nl.ca](mailto:queensprinter@gov.nl.ca).

Advertising rates are available upon request. Subscription rate for *The Newfoundland and Labrador Gazette* is \$125.00 for 52 weeks plus applicable tax (\$131.25). Weekly issues of \$3.00 per copy, plus tax payable in advance.

All cheques, money orders, etc., should be made payable to THE NEWFOUNDLAND EXCHEQUER ACCOUNT and all correspondence should be addressed to: Office of the Queen's Printer, P. O. Box 8700, Ground Floor, East Block, Confederation Building, St. John's, NL A1B 4J6. Telephone (709) 729-3649. Fax: (709) 729-1900.

**Web Site:** <http://www.gs.gov.nl.ca/prINTER/index.html>

**Place your order by contacting:  
Office of The Queen's Printer  
Confederation Building, East Block  
St. John's, NL A1B 4J6  
Telephone: (709) 729-3649 Fax: (709) 729-1900  
email: [queensprinter@gov.nl.ca](mailto:queensprinter@gov.nl.ca)**

**Government Information Product  
Publication Rate Mail  
G.S.T. # R107442683**

**All requests for Subscription and Legislation MUST be prepaid.**