



THE NEWFOUNDLAND AND LABRADOR GAZETTE

PART I

PUBLISHED BY AUTHORITY

Vol. 87 ST. JOHN'S, FRIDAY, AUGUST 17, 2012 No. 33

CORPORATIONS ACT

Corporations Act - Section 393
Local Incorporations
For the Month of: June 2012

Date	Number	Company Name			
2012-06-01	67698	MCDERMOTT CONSULTING INC.	2012-06-06	67728	TOMBOLO MULTICULTURAL FESTIVAL NEWFOUNDLAND AND LABRADOR INC.
2012-06-01	67702	P.P.T. CONVENIENCE LTD.	2012-06-06	67717	67717 NEWFOUNDLAND & LABRADOR INC.
2012-06-01	67695	3M Trucking Ltd	2012-06-06	67723	67723 NEWFOUNDLAND & LABRADOR LTD.
2012-06-01	67696	MLM Truck & Trailer Repair Ltd.	2012-06-07	67729	C & W CONTRACTING LTD.
2012-06-01	67697	Tasmar Enterprise Limited	2012-06-07	67730	DR. MARK C. PORTER PROFESSIONAL MEDICAL CORPORATION
2012-06-04	67710	67710 NEWFOUNDLAND AND LABRADOR LTD.	2012-06-07	67726	Englee Trucking Ltd.
2012-06-04	67706	B & H TRADING INC.	2012-06-08	67727	Exact Gaming Technologies Inc.
2012-06-04	67704	NEW BEGINNINGS CONSTRUCTION LIMITED	2012-06-08	67742	67742 NEWFOUNDLAND AND LABRADOR LIMITED
2012-06-04	67713	OAKE'S DRIVEWAY SEALING INC.	2012-06-08	67735	DEVFINITE CONSULTING INC.
2012-06-04	67703	PLS ENTERPRISES LTD.	2012-06-08	67736	INERTIA SOLUTIONS LTD.
2012-06-04	67708	TAYLARD CONSTRUCTION AND ABATEMENT LTD.	2012-06-08	67737	SHIKUN DRILLING LTD.
2012-06-04	67700	Seashore Consultants Limited	2012-06-08	67733	Quantum-Cor GP Inc.
2012-06-05	67718	MYA'S SUPERETTE & DELI INC	2012-06-08	67734	E. A. Jenkins Holdings Inc.
2012-06-05	67711	67711 NEWFOUNDLAND & LABRADOR INC.	2012-06-11	67752	67752 NEWFOUNDLAND & LABRADOR LTD.
2012-06-05	67712	K&K Ironworking Inc.	2012-06-11	67750	BRL PROPERTIES INC.
2012-06-05	67714	G & A Inspection and Consulting Services Inc.	2012-06-11	67751	CHATTERBOX SERVICES LIMITED
2012-06-05	67715	St. Jacques Island Heritage Corporation	2012-06-11	67747	COMPLETE FINISHING LTD
2012-06-05	67716	67716 NEWFOUNDLAND AND LABRADOR INC.	2012-06-11	67755	PERL ASSOCIATES INC.
2012-06-06	67725	67725 NEWFOUNDLAND AND LABRADOR INC.	2012-06-11	67753	ROYAL CANADIAN LEGION, BRANCH 50, BUILDING RESTORATION COMMITTEE INC.
			2012-06-11	67746	SUPERIOR MOBILE HIGH PRESSURE CLEANING LTD.
			2012-06-12	67768	BAY BUILDERS CONSTRUCTION LTD.

THE NEWFOUNDLAND AND LABRADOR GAZETTE
August 17, 2012

2012-06-12	67766	DYNAMIC CANINES INC.	2012-06-19	67812	Red Rooster Eatery and Food Service Limited
2012-06-12	67771	EM ST. JOHN'S REALTY INC.	2012-06-20	67839	AT HOME INSPECTION SERVICE INC.
2012-06-12	67767	NEWFOUNDLAND AND LABRADOR INSTITUTE OF THE PURCHASING MANAGEMENT ASSOCIATION OF CANADA INC.	2012-06-20	67834	BROTHERS EXCAVATING INC
2012-06-12	67756	B.A.N. Contracting Limited	2012-06-20	67835	DAWNCOR RESEARCH LTD.
2012-06-12	67757	67757 NEWFOUNDLAND & LABRADOR INCORPORATED	2012-06-20	67837	GAULTOIS INN LIMITED
2012-06-12	67758	COLE ENTERPRISES LTD	2012-06-20	67833	MCKEOWN EXPLORATION SERVICES INC.
2012-06-12	67759	67759 NEWFOUNDLAND & LABRADOR LTD.	2012-06-20	67838	SUNCOAST HOLDINGS LIMITED
2012-06-12	67760	Simmonds Properties Limited	2012-06-20	67813	Little Darlings Inc.
2012-06-12	67761	NAEKA Investments Ltd.	2012-06-20	67830	Dudes & Divas Retail Inc.
2012-06-12	67762	Sivummuak Consulting Limited	2012-06-20	67831	67831 NEWFOUNDLAND & LABRADOR INC.
2012-06-13	67780	BAYSWATER ENTERPRISES INC	2012-06-20	67832	Seasam Holdings Limited
2012-06-13	67779	CDC FLOORING, FINISHINGS AND TRIM LTD.	2012-06-21	67851	BGH ENTERPRISES LIMITED
2012-06-13	67785	COLBRE CONTRACTING INC.	2012-06-21	67848	BIG WHEEL PIPING LTD
2012-06-13	67781	FOCUS FIELD SOLUTIONS INC.	2012-06-21	67850	DR. ATEF H. BOCTOR PROFESSIONAL MEDICAL CORPORATION
2012-06-13	67763	Dr. J. M. Elliott Physician PMC Inc.	2012-06-21	67849	DR. EHAD SAAD AND DR. SHERIENE MALAK DOSS PROFESSIONAL MEDICAL CORPORATION
2012-06-13	67764	Ian Williams Naval Architect Incorporated	2012-06-21	67847	HEARN'S BOOM TRUCK SERVICE LTD.
2012-06-13	67765	JKH Storage Ltd.	2012-06-21	67836	Perfect Storm Fisheries Ltd.
2012-06-13	67774	DLG Holdings Limited	2012-06-21	67840	Dalsager Holdings Inc.
2012-06-13	67775	Northern Industrial Supply Ltd.	2012-06-21	67841	Noer Holdings Inc.
2012-06-13	67776	67776 NEWFOUNDLAND & LABRADOR LTD.	2012-06-21	67842	R & J Enterprises Inc.
2012-06-13	67777	six-sixty Services Ltd	2012-06-22	67862	BARDON HOLDINGS INC.
2012-06-13	67778	JS Home Reno Inc	2012-06-22	67864	PERSONAL BEST OCCUPATIONAL REHAB INC.
2012-06-14	67798	L.C.E.C. EXCAVATING LIMITED	2012-06-22	67843	Brakes Cove Enterprises Limited
2012-06-14	67796	NEWFOUNDLAND AND LABRADOR RAILING LIMITED	2012-06-22	67844	718 Water Street Property Holdings Inc.
2012-06-14	67788	Scotia Harvester Enterprises Ltd.	2012-06-22	67845	Sunrise Aviation Ltd.
2012-06-14	67789	Tutoring for Young Minds Inc.	2012-06-22	67846	Sienna's Spa & Salon Inc.
2012-06-14	67790	Willow Holdings Ltd.	2012-06-22	67854	Andrew Ash Contracting Incorporated
2012-06-14	67791	P.A.I. Holdings Limited	2012-06-22	67855	NL Residential Appraisal Ltd.
2012-06-14	67792	Northern Pest Control Services Ltd.	2012-06-22	67856	Algath Consulting Limited
2012-06-14	67793	Smart Learning and Development Solutions Inc.	2012-06-22	67857	SIVI Capital Limited
2012-06-14	67794	Conexis Labs Inc.	2012-06-25	67858	67858 NEWFOUNDLAND & LABRADOR INC.
2012-06-15	67799	ATLANTIC VINYL FENCE & RAIL LTD.	2012-06-25	67859	Dr. Jasjeet Singh Saluja Professional Medical Corporation
2012-06-15	67801	DR. MAUREEN GIBBONS PROFESSIONAL MEDICAL CORPORATION INC.	2012-06-25	67860	HURDLES WELDING & AUTOMOTIVE LTD
2012-06-15	67800	TLC ENTERPRISES INC.	2012-06-25	67861	The Junk Trunk Inc.
2012-06-18	67810	67810 NEWFOUNDLAND AND LABRADOR INC	2012-06-26	67883	67883 NEWFOUNDLAND & LABRADOR LTD.
2012-06-18	67807	BLUE SKY MANAGEMENT INC	2012-06-26	67866	A PLUS CONTRACTING INC.
2012-06-18	67806	DEVAN HOLDINGS INC.	2012-06-26	67869	BRADLEY W. HANCOCK CONTRACTING INC.
2012-06-18	67809	GATEWAY CASH INC.	2012-06-26	67877	CONTINENTAL COMPOSITES LIMITED
2012-06-18	67811	PROVINCIAL TAEKWONDO SOCIETY OF NEWFOUNDLAND AND LABRADOR INC.	2012-06-26	67872	DAVE'S SERVICE CENTER LIMITED
2012-06-18	67808	TINY'S CONTRACTING LTD.	2012-06-26	67867	DR. JOHN THOMS PROFESSIONAL MEDICAL CORPORATION
2012-06-18	67804	Cabinets Plus Inc.	2012-06-26	67868	DR. PETER BAZELEY PROFESSIONAL MEDICAL CORPORATION
2012-06-18	67805	Homeswest Construction Ltd.	2012-06-26	67873	HOLY NAME OF JESUS PARISH HALL INC.
2012-06-19	67814	67814 NEWFOUNDLAND AND LABRADOR LIMITED	2012-06-26	67871	J & Z ENTERPRISES INC.
2012-06-19	67819	67819 NEWFOUNDLAND AND LABRADOR LIMITED	2012-06-26	67870	MRK PROPERTIES INC.
2012-06-19	67825	ATLANTICA BUILDERS INC.	2012-06-26	67875	SIVI TOPSAIL ROAD INDUSTRIES LIMITED
2012-06-19	67817	HEAVY METAL PIPING LIMITED	2012-06-26	67865	Peach's Rent-A-Dump Ltd.
2012-06-19	67818	REYNOLDS DEVELOPMENT INC.	2012-06-27	67887	67887 NEWFOUNDLAND & LABRADOR LTD
2012-06-19	67815	ROCK SOLID MASONRY INCORPORATED			
2012-06-19	67821	SMARTFRID VENTURES INC.			
2012-06-19	67816	SUNSET CONSTRUCTION LTD.			
2012-06-19	67823	UNITED MASONRY LTD			

THE NEWFOUNDLAND AND LABRADOR GAZETTE
August 17, 2012

2012-06-27	67889	67889 NEWFOUNDLAND AND LABRADOR INC.	2012-06-08	34565	D.Y. Holdings Limited
2012-06-27	67888	KENMAR WELDING LIMITED	2012-06-08	43731	DOMAX ENTERPRISES LTD.
2012-06-27	67884	ROCK Merchandising Inc.	2012-06-08	57448	FANALYTICA TECHNOLOGIES LIMITED
2012-06-27	67885	Dr. C. Newman Physician PMC Inc.	2012-06-08	2646	HUMBER MOTORS LIMITED
2012-06-27	67886	67886 NEWFOUNDLAND AND LABRADOR INC.	2012-06-08	36701	NOTRE DAME COMPASSIONATE CARE INC.
2012-06-28	67900	CHR1.FM THESTREAM INC.	2012-06-11	66398	Big Land Aviation Limited
2012-06-28	67904	DR. JASON NOEL AND DR. MICHELLE ZWICKER DENTISTS INCORPORATED	2012-06-11	56453	COFFEY HOLDINGS LIMITED
			2012-06-11	61306	NSB Energy Inc.
2012-06-28	67903	GOLDEN RAINBOW SENIORS CLUB INC.	2012-06-11	60210	NSB Personnel Services Inc.
			2012-06-12	51644	51644 NEWFOUNDLAND & LABRADOR INC.
2012-06-28	67902	S N B ENTERPRISE LTD.	2012-06-13	48228	BAC Training Center Inc.
2012-06-28	67901	THOR INDUSTRIAL COMMERCIAL INC	2012-06-13	47981	Coast Broadcasting Ltd.
2012-06-28	67894	Taylor Holdings Ltd.	2012-06-13	26404	HARVEY GALE & SON LIMITED
2012-06-28	67895	Sunset Landing Development Inc.	2012-06-13	62664	MILNE ENTERPRISES INC
2012-06-28	67896	Safari Ad Fund Inc.	2012-06-13	67306	SHALIMAR STATION INC.
2012-06-28	67897	PRECISION AUTOMOTIVE INC.	2012-06-14	52380	52380 NEWFOUNDLAND & LABRADOR INC.
2012-06-28	67898	Excel Roofing Systems Inc.			
2012-06-29	67908	67908 NEWFOUNDLAND AND LABRADOR LIMITED	2012-06-14	7809	Swimming Newfoundland & Labrador Inc.
2012-06-29	67913	COOL ROCK INVESTMENTS INC.	2012-06-15	24050	FILM PRODUCERS ASSOCIATION OF NEWFOUNDLAND INC.
2012-06-29	67906	Blackridge Outfitters Ltd.			
			2012-06-15	59530	GW HOLDINGS LTD.
			2012-06-18	65994	BOSS CONSTRUCTION GROUP LTD
			2012-06-18	64846	ELITE PRODUCTIONS INCORPORATED
			2012-06-18	38736	IRISH LOOP REGIONAL ECONOMIC DEVELOPMENT BOARD INC.
			2012-06-19	34237	CANADIAN ICEBERG VODKA CORPORATION
			2012-06-19	44091	ICEBERG BEVERAGES INC
			2012-06-19	23867	IMPRESS DESIGN INC.
			2012-06-19	52683	MISS ACHIEVEMENT NEWFOUNDLAND AND LABRADOR INCORPORATED
			2012-06-19	36044	TWILLINGATE HISTORIC FISHING VILLAGE INC.
			2012-06-20	64835	CHARACTER TRAINING AND TEAM BUILDING INC.
			2012-06-20	60123	NUKUM FORESTRY LTD.
			2012-06-20	67269	PURE ICEBERG WATER INC.
			2012-06-20	65446	ROCKWATER CONTRACTING INC.
			2012-06-21	67717	67717 NEWFOUNDLAND & LABRADOR INC.
			2012-06-21	14979	C. & S. PLOWMAN LIMITED
			2012-06-21	3789	F.G.P. INVESTMENTS LIMITED
			2012-06-21	21700	L.J.R. SALES LTD.
			2012-06-21	60505	SALUS LIFE ACTIVE LIVING INC.
			2012-06-22	54074	Atlantic Spirits and Wines Limited
			2012-06-22	60861	MAMMOET HUNT'S ATLANTIC LTD.
			2012-06-22	67737	SHIKUN DRILLING LTD.
			2012-06-26	67528	Conche Seafoods Limited
			2012-06-26	60202	CRATE CONNECT INC.
			2012-06-26	56393	FLEX FIT INC.
			2012-06-26	26530	Lawrence Holdings Limited
			2012-06-27	67869	BRADLEY W. HANCOCK CONTRACTING INC.
			2012-06-27	66348	GMS HOLDING CORPORATION
			2012-06-27	37859	PAL AEROSPACE LTD.
			2012-06-28	66514	DOVRE CANADA LIMITED
			2012-06-28	354	SOCIETY OF UNITED FISHERMEN
			2012-06-29	48710	Biscolorow Enterprise Ltd.
			2012-06-29	38344	Cabot Auto Glass & Upholstery Inc.
			2012-06-29	46015	DR. JASON NOEL, DR. MICHELLE ZWICKER AND DR. DAVID HISCOCK DENTAL HEALTH CENTRE INC.

Total Incorporations: 156

Corporations Act - Section 331

Local Revivals

For the Month of: June 2012

Date	Number	Company Name
2012-06-18	48143	APTEX CONSULTING INC.
2012-06-29	57060	LOCK'S COVE SERVICES LIMITED

Total Revivals: 2

Corporations Act - Section 286

Local Amendments

For the Month of: June 2012

Date	Number	Company Name
2012-06-01	49214	Bilt-Right Services Corp.
2012-06-04	12484	12484 NEWFOUNDLAND & LABRADOR LIMITED
2012-06-04	55158	GAMMAL HOLDINGS LIMITED
2012-06-04	59754	PARALLEL SERVICES INC.
2012-06-04	55487	Surya Holdings Inc
2012-06-05	43599	Jim Corcoran Limited
2012-06-06	12484	12484 NEWFOUNDLAND & LABRADOR LIMITED
2012-06-06	44021	BLUE MOON ENTERPRISES LTD.
2012-06-06	9054	Lions Club of Bonavista
2012-06-06	61166	TERRA NOVA ENTERTAINMENT INC.
2012-06-07	51937	51937 NEWFOUNDLAND & LABRADOR LIMITED
2012-06-07	60639	60639 NEWFOUNDLAND & LABRADOR LTD.
2012-06-07	19968	Harbour Imports Limited
2012-06-07	12112	Imprint Specialty Promotions Limited
2012-06-07	64545	SHARPE PROPERTIES INC.
2012-06-07	2583	THE JOHN HOWARD SOCIETY OF NEWFOUNDLAND AND LABRADOR INC.
2012-06-07	14444	The Newfoundland Pony Society

THE NEWFOUNDLAND AND LABRADOR GAZETTE
August 17, 2012

2012-06-29 56913 EASTERN COMPOSITE SERVICES INC.
2012-06-29 47714 MAHER GROUP OF COMPANIES INC.
2012-06-29 26002 Mercury Services Limited
2012-06-29 49667 S & S EXCAVATING LTD.
2012-06-29 15520 THE NEWFOUNDLAND AND LABRADOR ASSOCIATION OF DIRECTORS OF EDUCATION

Total Amendments: 73

Corporations Act - Section 337
Local Intents to Dissolve
For the Month of: June 2012

Date	Number	Company Name
2012-06-12	9480	Lions Club of Chance Cove

Total Intents to Dissolve: 1

Corporations Act - Section 335
Local Dissolutions
For the Month of: June 2012

Date	Number	Company Name
2012-06-01	43422	GANDER BRACE ENTERPRISES INC.
2012-06-01	18812	Payne Holdings Limited
2012-06-04	10664	Isles End Dining Room & Restaurant Limited
2012-06-04	54271	Job's Cove Studios Ltd.
2012-06-04	30166	Security Watch Inc.
2012-06-04	52400	SR Entertainment Inc.
2012-06-05	6783	Hub Electric Limited
2012-06-06	41541	C & R BROTHERS LTD.
2012-06-06	51878	NOVA SANDBLASTING & RENOVATIONS LTD.
2012-06-07	37489	C.A. Pippy, Jr. Trusteeship Limited
2012-06-07	36292	CAPITAL MARKETING INC.
2012-06-08	58839	SWEETLAND'S TOWING SERVICE LTD
2012-06-11	42989	A/F Protein Canada 2000, Inc.
2012-06-11	58687	HOBEN'S SERVICES LTD
2012-06-11	64444	Postville Outdoor Supplies Ltd.
2012-06-12	56576	DR. S. SYAN PROFESSIONAL MEDICAL CORPORATION
2012-06-13	43597	K & T Holdings Ltd.
2012-06-13	30094	Tugger Enterprises Limited
2012-06-14	67552	2H Property Investments Limited
2012-06-14	62151	JEWER'S CONSTRUCTION INC.
2012-06-14	63424	SEA DAWGS MOTORCYCLE CLUB INC.
2012-06-14	55925	WALL PRODUCTIONS INC
2012-06-15	61562	F2 FINANCIAL SYSTEMS LTD.
2012-06-18	61363	EUREKA GYM LTD.
2012-06-18	43185	Islandside General Store Ltd.
2012-06-18	50897	POINT LEAMINGTON WHARF COMMITTEE INC.
2012-06-18	56658	Terrington Holdings Inc.
2012-06-19	65264	AMECON CONSULTING INC
2012-06-19	60525	Serenity Creek Living Inc.
2012-06-21	45173	Fitzgerald's Heating & Burner Service Ltd.
2012-06-26	35398	ALWIN RIDEOUT LIMITED
2012-06-26	58392	Empanda Realty Inc
2012-06-26	47253	J & R Equipment Rentals Incorporated

2012-06-27 51850 ASSOCIATED LAB AND SAFETY SUPPLY LTD.
2012-06-28 53512 F & S SEASIDE CONVENIENCE LTD.
2012-06-28 59729 RAY'S REPAIRS & HANDYMAN SERVICES INC
2012-06-29 59243 BONAVISTA NORTH TRANSPORTATION (2008) INC.
2012-06-29 5451 J. Boyd Butler & Son Ltd.

Total Dissolutions: 38

Corporations Act - Section 294
Local Amalgamations
For the Month of: June 2012

Date	Number	Company Name
2012-06-01	67699	METAL WORLD INC.
From:	66057	66057 NEWFOUNDLAND & LABRADOR INC.
	66899	METAL WORLD INC.
2012-06-01	67701	THE TOWER CORPORATE CAMPUS INCORPORATED
From:	43483	J & D HOLDINGS LIMITED
	61360	The Tower Corporate Campus Incorporated
2012-06-05	67720	62400 NEWFOUNDLAND AND LABRADOR INC.
From:	62400	62400 NEWFOUNDLAND AND LABRADOR INC.
	57757	BUILDER'S EDGE MANUFACTURING INC.
2012-06-29	67909	MAJOR'S LOGGING LIMITED
From:	45388	EASTWOOD FOREST PRODUCTS INC.
	64014	MAJOR'S LOGGING LIMITED
2012-06-30	67915	ANW CONSTRUCTION LIMITED
From:	13379	Edward D. Burry Limited
	41688	Great Circle Holdings Limited

Total Amalgamations: 5

Corporations Act - Section 286
Local Name Changes
For the Month of: June 2012

Number	Company Name
61166	TERRA NOVA ENTERTAINMENT INC.
2012-06-06 From:	61166 NEWFOUNDLAND AND LABRADOR INC.
57448	FANALYTICA TECHNOLOGIES LIMITED
2012-06-08 From:	FIREFLY GRILL WORKS INCORPORATED
62664	MILNE ENTERPRISES INC
2012-06-13 From:	ALAMOR ENTERPRISES INC.

THE NEWFOUNDLAND AND LABRADOR GAZETTE
August 17, 2012

67306		SHALIMAR STATION INC.	2012-06-11	67769	BIRD CONSTRUCTION GP LIMITED
2012-06-13	From:	SHALIMAR'S ESSO INC.	2012-06-11	67745	GREEN FUTURE ICELAND LTD.
23867		IMPRESS DESIGN INC.	2012-06-11	67754	MHW TRADING CO INC
2012-06-19	From:	IMPRESS LARGE FORMAT INC.	2012-06-11	67749	MILESTONE AV TECHNOLOGIES ULC
52683		MISS ACHIEVEMENT	2012-06-11	67748	MOUNTAIN LAKE MINERALS INC.
		NEWFOUNDLAND AND LABRADOR	2012-06-12	67770	2328969 ONTARIO INC.
		INCORPORATED	2012-06-12	67772	ICE HUNTER PRODUCTIONS, INC.
2012-06-19	From:	MISS TEEN ACHIEVEMENT	2012-06-12	67773	P.E.I. MUSSEL KING (1994) INC.
		NEWFOUNDLAND AND LABRADOR	2012-06-13	67782	K AND L HOLDINGS LTD.
		INCORPORATED	2012-06-13	67784	THE BLUE GOOSE CATTLE COMPANY LTD.
64835		CHARACTER TRAINING AND TEAM	2012-06-13	67783	VECTOR SECURITY, INC.
		BUILDING INC.	2012-06-14	67795	MAXWELL CLAIMS SERVICES INC.
2012-06-20	From:	Character the Virtues Company Inc.	2012-06-14	67797	MD PRACTICE SOFTWARE GP INC.
67269		PURE ICEBERG WATER INC.	2012-06-15	67803	COMMANDITÉ LOGICIELS DE GESTION MÉDICALE MD INC.
2012-06-20	From:	67269 NEWFOUNDLAND & LABRADOR INC.	2012-06-15	67802	GASTOPS LTD.
67737		SHIKUN DRILLING LTD.			TOSHIBA GLOBAL COMMERCE SOLUTIONS (CANADA) LTD.
2012-06-22	From:	SKIKUN DRILLING LTD.			TOSHIBA SOLUTIONS COMMERCIALES GLOBALES (CANADA) LTÉE
56393		FLEX FIT INC.	2012-06-19	67827	4358376 CANADA INC.
2012-06-26	From:	TENALY ENTERPRISES LTD.	2012-06-19	67826	7583168 CANADA INC.
67869		BRADLEY W. HANCOCK CONTRACTING INC.	2012-06-19	67824	HARBOUR AUTHORITY OF HANT'S HARBOUR
2012-06-27	From:	BRADLEY W. HANCOCK INC.	2012-06-19	67820	MANSFIELD OF CANADA ULC
66514		DOVRE CANADA LIMITED	2012-06-19	67829	NATIONAL DIABETES TRUSTEE CORP.
2012-06-28	From:	FABCON CANADA LIMITED	2012-06-19	67828	THE CRUISE PROFESSIONALS LIMITED
46015		DR. JASON NOEL, DR. MICHELLE ZWICKER AND DR. DAVID HISCOCK	2012-06-22	67863	BPS LANDSCAPING INC.
		DENTAL HEALTH CENTRE INC.	2012-06-26	67882	BARNARD CONSTRUCTION OF CANADA LTD.
2012-06-29	From:	DR. JASON NOEL AND DR. MICHELLE ZWICKER DENTAL HEALTH CENTRE INC.	2012-06-26	67876	DESIRE2LEARN INCORPORATED
			2012-06-26	67878	HARBOUR AUTHORITY OF MUSGRAVE HARBOUR
			2012-06-26	67881	NEWPOINT MEDIA GROUP CANADA INC.
			2012-06-26	67874	PLOMBERIE TREMBLAY ET FILS INC.
Total Name Changes: 13			2012-06-26	67879	PRODUCT CARE ASSOCIATION
			2012-06-26	67880	S & B LARGE PRINT SPECIAL LINES LTD.
<i>Corporations Act - Section 443</i>			2012-06-27	67892	AMBIO INGENIORTJENESTER A.S.
Extra-Provincial Registrations			2012-06-27	67890	DRAGADOS CANADA, INC.
For the Month of: June 2012			2012-06-27	67891	GREAT AMERICAN INSURANCE AGENCY, INC.
Date	Number	Company Name	2012-06-27	67893	OZARK HOLDINGS LTD.
2012-06-04	67705	GEODIGITAL INTERNATIONAL INC.	2012-06-28	67899	ARUP CANADA INC.
2012-06-04	67707	GOOSE BAY CAPITAL CORP INC.	2012-06-28	67905	HARBOUR AUTHORITY OF LITTLE BURNT BAY
2012-06-04	67709	KRUGER PRODUCTS G.P. II INC.			AAXEL INSURANCE BROKERS LTD.
		PRODUITS KRUGER G.P. II INC.	2012-06-29	67907	BELL & GRANT INSURANCE LIMITED
2012-06-05	67722	G & M PROJECT MANAGEMENT & CONSULTING SERVICES LIMITED	2012-06-29	67914	
2012-06-05	67719	SODACO INTERNATIONAL INC.			
2012-06-06	67724	CELSIUS GAME STUDIOS INC.			
2012-06-07	67731	NAL INSURANCE INC.			
2012-06-07	67732	PRO-MOTION TECHNOLOGY GROUP - CANADA, LTD.			
2012-06-08	67740	8172790 CANADA INC.			
2012-06-08	67739	AQUABIOTECH INC.			
2012-06-08	67738	RD INNOVATIONS INC.			
2012-06-08	67744	SYNERGY LAND SERVICES LTD.			
2012-06-08	67741	TCP INVESTMENT CANADA II CORP.			
2012-06-08	67743	THE READER'S DIGEST ASSOCIATION (CANADA) ULC			
			Number	Company Name	
			56316	CERRO MINING CORP.	
			2012-06-01	From:	CAPELLA RESOURCES LTD.

Total Registrations: 51

Corporations Act - Section 451
Extra-Provincial Name Changes
For the Month of: June 2012

THE NEWFOUNDLAND AND LABRADOR GAZETTE
August 17, 2012

67338		TYCO INTEGRATED SECURITY CANADA, INC./SECURITE INTEGREE TYCO CANADA, INC.	From:	4632F	BROOKFIELD GLOBAL RELOCATION SERVICES INC./ SERVICES GLOBAUX DE RELOGEMENT BROOKFIELD INC.
2012-06-01	From:	TYCO INTEGRATED SECURITY CANADA, INC.			
60015		AON FIRE PROTECTION ENGINEERING CORPORATION		2012-06-13 67787	LETKO, BROSSEAU & ASSOCIATES INC. LETKO, BROSSEAU & ASSOCIÉS INC.
2012-06-05	From:	SCHIRMER ENGINEERING CORPORATION	From:	3834D	LETKO, BROSSEAU & ASSOCIATES INC. LETKO, BROSSEAU & ASSOCIÉS INC.
67646		HANSEN PROTECTION CANADA LIMITED			
2012-06-06	From:	3262770 NOVA SCOTIA LIMITED	2012-06-19 67822	59632	ORKIN CANADA CORPORATION ORKIN CANADA CORPORATION
4631F		BROOKFIELD GLOBAL RELOCATION SERVICES 2 LIMITED/SERVICES GLOBAUX DE RELOGEMENT BROOKFIELD 2 LIMITEE		2012-06-21 67853	CONFISERIES RÉGAL INC. REGAL CONFECTIONS INC.
			From:	67852	RGLWC ACQUISITION CO. INC. CIE ACQUISITION RGLWC INC.
2012-06-07	From:	BROOKFIELD GLOBAL RELOCATION SERVICES LIMITED/SERVICES GLOBAUX DE RELOGEMENT BROOKFIELD LIMITEE	2012-06-21 67852		RGLWC ACQUISITION CO. INC. CIE ACQUISITION RGLWC INC.
			From:	59002	3651410 CANADA INC.
57817		CONSTELLATION BRANDS CANADA, INC.			
2012-06-08	From:	VINCOR INTERNATIONAL INC.			
66714		CONSTELLATION BRANDS SCHENLEY, INC.			
2012-06-08	From:	SCHENLEY DISTILLERIES INC. LES DISTILLERIES SCHENLEY INC.			
67853		CONFISERIES RÉGAL INC. REGAL CONFECTIONS INC.			
2012-06-21	From:	7739753 CANADA INC.			
64140		RESOLUTE FP CANADA INC. PF RÉSOLU CANADA INC.			
2012-06-21	From:	ABIBOW CANADA INC.			
63824		MOODY'S ANALYTICS GLOBAL EDUCATION (CANADA), INC.			
2012-06-28	From:	CSI GLOBAL EDUCATION INC.			

Total Registrations for Amalgamation: 6

SERVICE NL
Dean Doyle
Registrar of Companies

Aug 17

MINERAL ACT

NOTICE

Published in accordance with section 62 of CNLR 1143/96 under the *Mineral Act*, cM-12, RSNL 1990 as amended.

Mineral rights to the following mineral licenses have reverted to the Crown:

Mineral License	020120M
Held by	New Island Resources Inc
Situate near	Snooks Arm, Baie Verte Peninsula
On map sheet	02E/13
A portion of license	019134M
Held by	Quest Rare Minerals Ltd.
Situate near	Fraser River
On map sheet	24A/08
more particularly described in an application on file at Department of Natural Resources	
Mineral License	013597M
Held by	North Range Resources Ltd.
Situate near	Lookout Brook, Western NL
On map sheet	12B/08
Mineral License	013625M
Held by	Tawsho Mining Inc.
Situate near	Middle Arm Brook, Baie Verte Peninsula
On map sheet	12H/09 12H/16

Total Name Changes: 10

Corporations Act - Section 294
Extra-Provincial Registrations for Amalgamation
For the Month of: June 2012

Date	Number	Company Name
2012-06-05	67721	LEIBEL MACMILLAN INSURANCE SERVICES LTD.
From:	65287	LEIBEL MACMILLAN INSURANCE SERVICES LTD.
2012-06-13	67786	BROOKFIELD GLOBAL RELOCATION SERVICES LIMITED/ SERVICES GLOBAUX DE RELOGEMENT BROOKFIELD LIMITEE

THE NEWFOUNDLAND AND LABRADOR GAZETTE
August 17, 2012

Mineral License Held by Situates near On map sheet	013644M Celtic Minerals Ltd Great Burnt Lake, Central NL 2A/08	Mineral License Held by Situates near On map sheet	017607M Vale Exploration Canada Inc. Duntara, Eastern NL 02C/11
Mineral License Held by Situates near On map sheet	013649M Alterra Resources Inc. Alliger Lake 14E/01	Mineral License Held by Situates near On map sheet	017608M Vale Exploration Canada Inc. Tickle Cove, Eastern NL 02C/11
Mineral License Held by Situates near On map sheet	013651M Alterra Resources Inc. Alliger Lake 14E/01	Mineral License Held by Situates near On map sheet	017609M Vale Exploration Canada Inc. Keels Area, Eastern NL 02C/11
Mineral License Held by Situates near On map sheet	014901M New Island Resources Inc Sleepy Cove, North Twillingate Island 02E/10	Mineral License Held by Situates near On map sheet	017610M Vale Exploration Canada Inc. Keels Area, Eastern NL 02C/11
Mineral License Held by Situates near On map sheet	014902M New Island Resources Inc Wild Cove, North Twillingate Island 02E/10	Mineral License Held by Situates near On map sheet	017611M Vale Exploration Canada Inc. Keels Area, Eastern NL 02C/11
Mineral License Held by Situates near On map sheet	014903M Celtic Minerals Ltd Napaktok Bay Area 14E/10 14E/15	Mineral License Held by Situates near On map sheet	017612M Vale Exploration Canada Inc. Keels Area, Eastern NL 02C/11
Mineral License Held by Situates near On map sheet	014922M McGrath, Donald St. Juliens, Great Northern Peninsula 02M/04	Mineral License Held by Situates near On map sheet	017613M Vale Exploration Canada Inc. Broad Head, Eastern NL 02C/11
Mineral License Held by Situates near On map sheet	014942M Celtic Minerals Ltd Napaktok Bay Area 14E/15	Mineral License Held by Situates near On map sheet	017614M Vale Exploration Canada Inc. Broad Head, Eastern NL 02C/11
Mineral License Held by Situates near On map sheet	016060M Eagleridge Minerals Ltd. Baie Verte Area 12H/16	Mineral License Held by Situates near On map sheet	017615M Noel, E. Michele Indian Cove Neck, Central NL 02E/07
Mineral License Held by Situates near On map sheet	016825M Senior, Carter Red Harbour Area, Burin Peninsula 01M/06	Mineral License Held by Situates near On map sheet	017616M Noel, E. Michele Corner Brook Area, Western NL 12A/13
Mineral License Held by Situates near On map sheet	017580M Hicks, Darrin Stephenville, Western NL 12B/10	Mineral License Held by Situates near On map sheet	017618M Noel, E. Michele Big Gull Pond, Western NL 12B/16
Mineral License Held by Situates near On map sheet	017585M Knight, Kenneth Goose Arm Pond, Western NL 12H/04	Mineral License Held by Situates near On map sheet	017620M Noel, E. Michele Lewis Pond, Central NL 02D/14
Mineral License Held by Situates near On map sheet	017605M Vale Exploration Canada Inc. Keels Area, Eastern NL 02C/11	Mineral License Held by Situates near On map sheet	017622M Noel, E. Michele Penneys Pond, Great Northern Peninsula 12I/16
Mineral License Held by Situates near On map sheet	017606M Vale Exploration Canada Inc. Keels Area, Eastern NL 02C/11	Mineral License Held by	018454M Senior, Carter

THE NEWFOUNDLAND AND LABRADOR GAZETTE
August 17, 2012

Situate near	Red Harbour Area,	Mineral License	018920M
On map sheet	Burin Peninsula	Held by	Dawson, Michael E.
	01M/07, 01M/06	Situate near	Victoria Lake, Central NL
		On map sheet	12A/05
Mineral License	018462M	Mineral License	018922M
Held by	Senior, Carter	Held by	Dawson, Michael E.
Situate near	Red Harbour Area,	Situate near	Deer Cove, Baie Verte Peninsula
On map sheet	Burin Peninsula	On map sheet	12I/01
	01M/06		
Mineral License	018463M	Mineral License	018930M
Held by	Senior, Gordon B.	Held by	Lannon, Rosalind
Situate near	Red Harbour Area,	Situate near	Gull Pond, Baie Verte Peninsula
On map sheet	Burin Peninsula	On map sheet	02E/13 12H/16
	01M/06		
Mineral License	018529M	Mineral License	018931M
Held by	Senior, Carter	Held by	Vendittelli, Luciano
Situate near	Red Harbour Area,	Situate near	Corbin Harbour Area,
On map sheet	Burin Peninsula	On map sheet	Burin Peninsula
	01M/06		01L/14
Mineral License	018533M	Mineral License	018934M
Held by	Senior, Carter	Held by	Bayswater Ventures Corp.
Situate near	Red Harbour Area,	Situate near	Shapio Lake East
On map sheet	Burin Peninsula	On map sheet	13K/14
	01M/06		
Mineral License	018534M	Mineral License	018938M
Held by	Senior, Carter	Held by	White, Derek R.
Situate near	Red Harbour Area,	Situate near	Southwest Brook,
On map sheet	Burin Peninsula	On map sheet	West - Central NL
	01M/07 01M/06		12B/08
Mineral License	018580M	Mineral License	018940M
Held by	Fraser, Dean	Held by	Dawson, Michael E.
Situate near	Roberts Arm, Central NL	Situate near	Deer Cove, Baie Verte Peninsula
On map sheet	02E/05 02E/12	On map sheet	12I/01
Mineral License	018612M	Mineral License	018941M
Held by	Senior, Gordon B.	Held by	Snow-Goosney, JoAnn
Situate near	Red Harbour Area,	Situate near	Isle aux Morts Area, Southern NL
On map sheet	Burin Peninsula	On map sheet	11O/15
	01M/06		
Mineral License	018623M	Mineral License	018942M
Held by	Unity Resources Inc.	Held by	Snow-Goosney, JoAnn
Situate near	Mount Peyton, Central NL	Situate near	Isle aux Morts Area, Southern NL
On map sheet	02D/15	On map sheet	11O/15
Mineral License	018900M	Mineral License	018943M
Held by	Snow-Goosney, JoAnn	Held by	Snow-Goosney, JoAnn
Situate near	Isle aux Morts Area, Southern NL	Situate near	Isle aux Morts Area, Southern NL
On map sheet	11O/15	On map sheet	11O/15
Mineral License	018901M	Mineral License	018944M
Held by	Dawson, Michael E.	Held by	Snow-Goosney, JoAnn
Situate near	Victoria Lake, Central NL	Situate near	Isle aux Morts Area, Southern NL
On map sheet	12A/05	On map sheet	11O/15
Mineral License	018903M	Mineral License	018992M
Held by	Taylor, Ronald	Held by	Turpin, Benjamin
Situate near	St John's, Avalon Peninsula	Situate near	Corbin Harbour Area,
On map sheet	01N/10	On map sheet	Burin Peninsula
			01L/14
Mineral License	018919M	Mineral License	018993M
Held by	Vendittelli, Luciano	Held by	Turpin, Benjamin
Situate near	Strouds Pond Area,	Situate near	Bay De L' eau River,
On map sheet	Burin Peninsula	On map sheet	Burin Peninsula
	01M/03		01M/07, 01M/10

The lands covered by this notice except for the lands within Exempt Mineral Lands, the Exempt Mineral Lands being described in CNLR 1143/96 and NLR 71/98, 104/98, 97/00, 36/01, 31/04, 78/06, 8/08 and 28/09 and outlined on 1:50 000 scale digital maps maintained by the Department of Natural Resources, will be open for staking after the hour of 9:00 a.m. on the 32nd clear day after the date of this publication.

DEPARTMENT OF NATURAL RESOURCES
JIM HINCHEY, P.Geo
Manager - Mineral Rights

File #'s 774:4738, 7177, 8425, 8453, 8469, 8474, 8476,
9558, 9559, 9560, 9573, 9589,

775:0221, 0643, 1059, 1063, 1065, 1066, 1067,
1068, 1069, 1070, 1071, 1072, 1073, 1074,
1075, 1076, 1078, 1080, 1082, 1810, 1818,
1819, 1881, 1885, 1886, 1919, 1934, 1950,
1961, 2204, 2205, 2206, 2217, 2218, 2220,
2229, 2230, 2233, 2237, 2239, 2240, 2241,
2242, 2243, 2291, 2292

Aug 17

URBAN AND RURAL PLANNING ACT, 2000

NOTICE OF REGISTRATION ST. JOHN'S MUNICIPAL PLAN AMENDMENT NO. 101, 2012 AND ST. JOHN'S DEVELOPMENT REGULATIONS AMENDMENT NO. 531, 2012

TAKE NOTICE that the ST. JOHN'S Municipal Plan Amendment Number 101, 2012 and the ST. JOHN'S Development Regulations Amendment Number 531, 2012 adopted on the 26th day of June, 2012 and approved as amended on the 23rd day of July, 2012, have been registered by the Minister of Municipal Affairs.

In general terms, the purpose of Municipal Plan Amendment Number 101, 2012 is to designate land at Civic Number 25 Rhodora Street to the Residential High Density District and land at Civic Numbers 15 and 17 Airport Heights Drive and Civic Number 13 Halls Road to the Residential Low Density District.

In general terms, the purpose of Development Regulations Amendment Number 531, 2012 is to rezone land at Civic Number 25 Rhodora Street to the Apartment Medium Density (A2) Zone and land at Civic Numbers 15 and 17 Airport Heights Drive and Civic Number 13 Halls Road to the Residential Low Density (R1) Zone.

These amendments come into effect on the date that this notice is printed in *The Newfoundland and Labrador Gazette*. Anyone who wishes to inspect a copy of the amendments may do so at the Department of Planning, 3rd Floor, St. John's City Hall during regular business hours.

CITY OF ST. JOHN'S
Cliff Johnston, MCIP - Director of Planning

Aug 17

NOTICE OF REGISTRATION TOWN OF GLOVERTOWN MUNICIPAL PLAN, 2010-2020 AND DEVELOPMENT REGULATIONS, 2010-2020

TAKE NOTICE that the TOWN OF GLOVERTOWN Municipal Plan and Development Regulations, 2010-2020, adopted on the 28th Day of March, 2012 and approved (as amended) on the 28th day of March, 2012, has been registered by the Minister of Municipal Affairs.

These plans come into effect on the day that this notice is published in *The Newfoundland and Labrador Gazette*. Anyone who wishes to inspect a copy of them may do so at the Town Office, during normal working hours.

TOWN OF GLOVERTOWN
Lorne Sparkes, Town Clerk

Aug 17

LANDS ACT

NOTICE OF INTENT *Lands Act, c36, SNL 1991, as amended*

NOTICE IS HEREBY given that the MUNICIPALITY OF ROBERT'S ARM, NL intends to apply to the Department of Environment and Conservation, two months from the publication of this notice, to acquire title, pursuant to Section 7(2)(e) of the said Act, to that piece of Crown land situated within fifteen (15) metres of the waters of Robert's Arm Waterfront in the Electoral District of Grand Falls-Windsor-Green Bay South for the purpose of a public slipway and being more particularly described as follows:

*Bounded on the North by property of Alwin Rideout
for a distance of 30 metres;
Bounded on the East by the Atlantic Ocean
for a distance of 18.2 metres;
Bounded on the South by property of Derrick Hibbs
for a distance of 30 metres;
Bounded on the West by Main Street, Robert's Arm
for a distance of 18.2 metres;
and containing an area of
approximately 546 square metres.*

Any person wishing to object to the application must file the objection, in writing, within one month from the publication of this Notice, with reasons for it, to the Minister of Environment and Conservation, and mail to the nearest Regional Lands Office:

c/o Eastern Regional Lands Office, P.O. Box 8700, 5 Mews Place, St. John's, NL, A1B 4J6.

c/o Central Regional Lands Office, P.O. Box 2222, Gander, NL, A1V 1L7.

c/o Western Regional Lands Office, P.O. Box 2006, Noton Building, Corner Brook, NL, A2H 6J8.

c/o Labrador Regional Lands Office, P.O. Box 3014, Station "B", Happy Valley-Goose Bay, NL, A0P 1E0.

For further information on the proposed application, please contact: MUNICIPALITY OF ROBERT'S ARM, ADA ROWSELL, Telephone Number: (709) 652-3331.

Aug 17

NOTICE OF INTENT
Lands Act, c36, SNL 1991, as amended

NOTICE IS HEREBY given that RONALD MERCER of Swift Current, NL intends to apply to the Department of Environment and Conservation, two months from the publication of this notice, to acquire title, pursuant to Section 7(2)(a) of the said Act, to that piece of Crown land situated within fifteen (15) metres of the waters of Placentia Bay in the Electoral District of Bellevue for the purpose of a wood fabrication shop and being more particularly described as follows:

*Bounded on the North by Crown Land
for a distance of 30 metres;
Bounded on the East by Crown Land
for a distance of 10 metres;
Bounded on the South by a Shoreline Reservation
for a distance of 30 metres;
Bounded on the West by Crown Land
for a distance of 10 metres;
and containing an area of
approximately 300 square metres.*

Any person wishing to object to the application must file the objection, in writing, within one month from the publication of this Notice, with reasons for it, to the Minister of Environment and Conservation, and mail to the nearest Regional Lands Office:

c/o Eastern Regional Lands Office, P.O. Box 8700, 5 Mews Place, St. John's, NL, A1B 4J6.

c/o Central Regional Lands Office, P.O. Box 2222, Gander, NL, A1V 1L7.

c/o Western Regional Lands Office, P.O. Box 2006, Noton Building, Corner Brook, NL, A2H 6J8.

c/o Labrador Regional Lands Office, P.O. Box 3014, Station "B", Happy Valley-Goose Bay, NL, A0P 1E0.

For further information on the proposed application, please contact: RONALD MERCER, Telephone Number: (709) 549-2714.

Aug 17

QUIETING OF TITLES ACT

2012 01G 3768
IN THE SUPREME COURT OF
NEWFOUNDLAND AND LABRADOR
TRIAL DIVISION (GENERAL)

NOTICE OF APPLICATION under the *Quieting of Titles Act*, RSNL 1990, cQ-3, as amended;

NOTICE IS HEREBY given to all parties that 10910 NEWFOUNDLAND INC., has applied to the Supreme Court of Newfoundland and Labrador, Trial Division, at St. John's, to have title to all that piece or parcel of land situate and being on the southwestern side of Old Conception Bay Highway, Bristol's Hope, in the province of Newfoundland and Labrador, as more particularly described and set forth in the Schedule hereunto annexed marked "A" of which the Applicant claims to be the owner, investigated and for a Declaration that 10910 NEWFOUNDLAND INC., is the absolute owner thereof.

By an unregistered Deed of Conveyance, 10910 NEWFOUNDLAND INC., acquired the subject property from Vincent McCarthy. The Deed of Conveyance is being held in trust pending the determination of the within application.

The Applicant has been ordered to publish notice of the application as required by the above named Act. All persons having title adverse to the said title claimed by the Applicant shall file in the Registry of the Supreme Court of Newfoundland and Labrador at St. John's particulars of such adverse claim and serve the same together with an Affidavit verifying same on the undersigned solicitors for the Applicant on or before the 19th day of September, 2012, after which date no party having any claim shall be permitted to file the same or be heard except by leave of the Court and subject to such conditions as the Court may deem just.

All such adverse claims shall be then investigated as the said Supreme Court of Newfoundland and Labrador at St. John's may direct.

DATED AT the City of St. John's, in the province of Newfoundland and Labrador, this 8th day of August, 2012.

FRENCH & ASSOCIATES
Solicitors for the Applicant
PER: Christopher E. Gill

ADDRESS FOR SERVICE:
Suite 122, Elizabeth Towers
100 Elizabeth Avenue
St. John's, NL A1B 1S1

Tel: (709)-754-1800
Fax: (709) 754-2701

SCHEDULE "A"

Metes and bounds description of property surveyed for 10910 NEWFOUNDLAND INC., located at Bristol's Hope, in the Electoral District of Carbonear-Harbour Grace, Province of Newfoundland and Labrador and is more particularly described as follows.

All that lot, piece or parcel of land situate to the southwest of Old Conception Bay Highway, 20m wide, and northeast of Canadian National Railway, 30m wide, (Abandoned).

Beginning at a point, such point being a found survey marker located at the northeasternmost angle of said described land and having NAD83 coordinates of N 5 285 879.776 and E 288 450.901 of the modified three degree transverse mercator projection for the Province of Newfoundland and Labrador;

Thence running along the southwestern limit of said Old Conception Bay Highway, 20m wide, south twenty-one degrees fifty-one minutes thirty-six seconds east (S21°51'36"E) a distance of eighty-six decimal three seven nine meters (86.379m);

Thence running along said southwestern limit of Old Conception Bay Highway, 20m wide, south twenty-two degrees forty-six minutes twenty-three seconds east (S22°46'23"E) a distance of thirty decimal two eight three meters (30.283m);

Thence running along said southwestern limit of Old Conception Bay Highway, 20m wide, south twenty-one degrees thirty-nine minutes fifty-three seconds east (S21°39'53"E) a distance of thirty decimal two eight three meters (30.283m);

Thence running along said southwestern limit of Old Conception Bay Highway, 20m wide, south nineteen degrees twenty one minutes twenty-three seconds east (S19°21'23"E) a distance of thirty decimal three five eight meters (30.358m);

Thence running along said southwestern limit of Old Conception Bay Highway, 20m wide, south nineteen degrees twenty four minutes forty-two seconds east (S19°24'42"E) a distance of seventeen decimal four eight zero meters (17.480m);

Thence running along the property of Robert Lynch north seventy-eight degrees thirty-one minutes zero three seconds west (N78°31'03"W) a distance of one hundred and fifty-seven decimal nine nine six meters (157.996m);

Thence running along said property of Robert Lynch, the property of Rodrick Davis and Lynn Petten and the property of Jerry Crocker south five degrees fifty-three minutes twenty-seven seconds east (S05°53'27"E) a distance of seventy-six decimal one one nine meters (76.119m);

Thence running along said property of Jerry Crocker south seventy-four degrees forty-one minutes forty-five seconds east (S74°41'45"E) a distance of sixty-five decimal six zero one meters (65.601m);

Thence running along the property of Lowell and Lisa French south fifteen degrees eighteen minutes zero zero seconds west (S15°18'00"W) a distance of sixty-seven decimal two five four meters (67.254m);

Thence running along the northeastern limit of said Canadian National Railway, 30m wide, (Abandoned) north sixty-eight degrees fifty-three minutes zero zero seconds west (N68°53'00"W) a distance of three hundred and seventy-two decimal seven eight eight meters (372.788m);

Thence running along Crown Land north fourteen degrees thirty-one minutes zero zero seconds west (N14°31'00"W) a distance of one hundred and eighty-two decimal zero five nine meters (182.059m);

Thence running along a Reserved Road, 30m wide, south eighty-nine degrees thirty-one minutes zero zero seconds east (S89°31'00"E) a distance of two hundred and fifty-three decimal zero zero one meters (253.001m);

Thence running along said Reserved Road; 30m wide, and the property of Patrick McCormick south eighty-eight degrees fifty-four minutes thirty-three seconds east (S88°54'33"E) a distance of seventy-nine decimal eight eight one meters (79.881m);

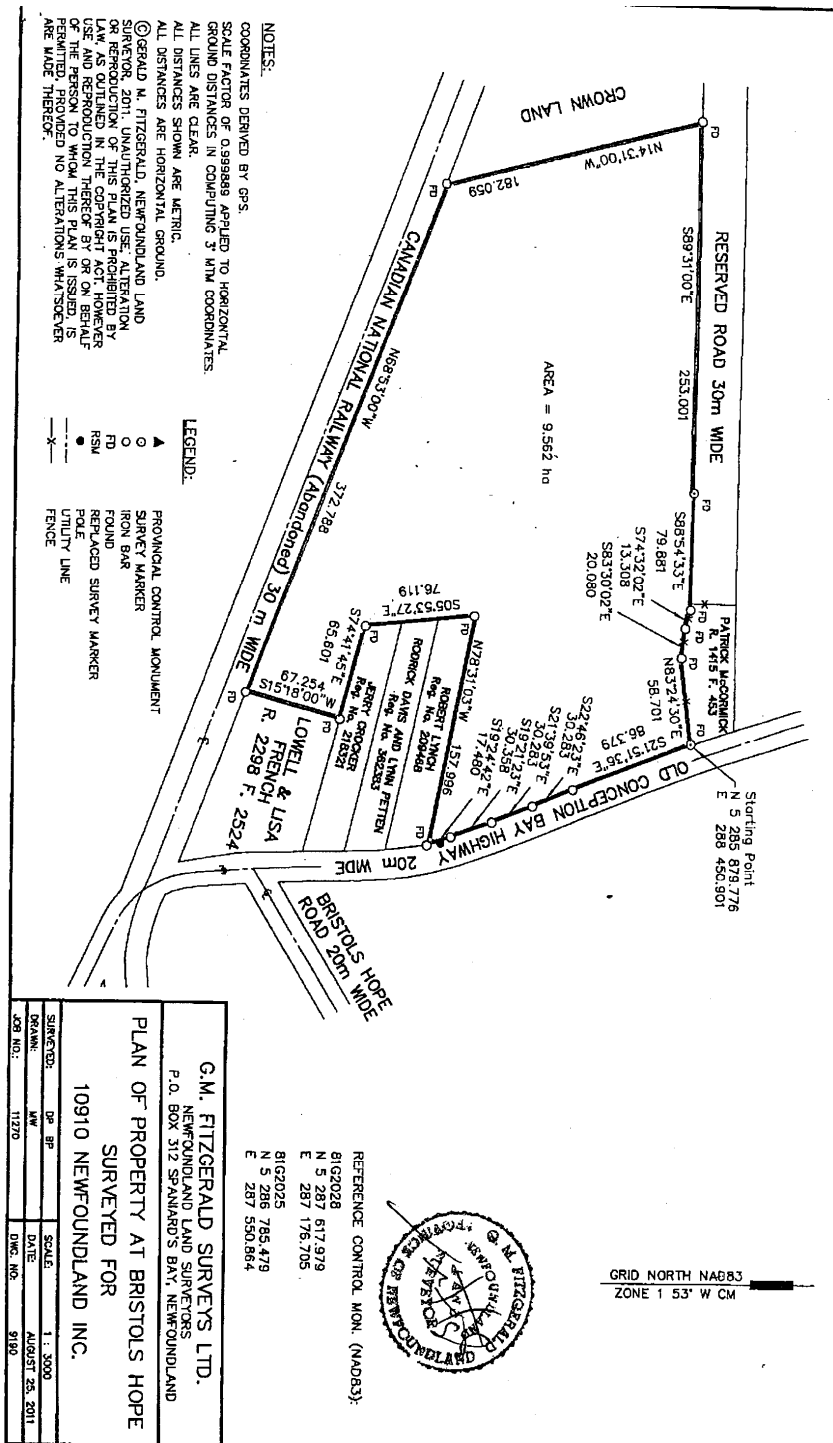
Thence running along said property of Patrick McCormick south seventy-four degrees thirty-two minutes zero two seconds east (S74°32'02"E) a distance of thirteen decimal three zero eight meters (13.308m);

Thence running along said property of Patrick McCormick south eighty-three degrees thirty minutes zero two seconds east (S83°30'02"E) a distance of twenty decimal zero eight zero meters (20.080m);

Thence running along said property of Patrick McCormick north eighty-three degrees twenty-four minutes thirty seconds east (N83°24'30"E) a distance of fifty-eight decimal seven zero one meters (58.701m), more or less, to the point of commencement.

All bearings are referenced from the modified three degree transverse mercator projection having a central meridian of fifty-three degrees west longitude and the whole parcel containing a calculated area of 9.562 hectares, more or less, and is more particularly shown, outlined on the attached plan.

SCHEDULE "A"



Aug 17

CHANGE OF NAME ACT, 2009

Legal Name Changes
Processed During the Period – JULY 2012

Under the authority vested in me by the *Change of Name Act, 2009* SNL 2009 Chapter C-8-1, I hereby certify that the following names have been changed.

Former Name	Present Name	Address
Buoni, John Yien	Mayilk, John Deng	St. John's
Osmond, Noah James Vernon	Cassell, Noah James Vernon	Howley
Malon, Shiamia Lynn	Gosse, Shiamia Lynn	Torbay
Malon, Tyler Walter	Gosse, Tyler Walter	Torbay
Binti Abd Halim, Siti Rasyidah	Abd Halim, Siti Rasyidah	St. John's
Chauk, Bianca Danielle Brittany	Freaka, Bianca Danielle Brittany	Carmenville
French, Gary Gordon Gerard	Dove, Gary Gordon Gerard	Bay Roberts
Gosse, Alexander William	Layden, Alexander William	Harbour Grace
Bovin, Chandra Lee Anne	Carroll, Chandra Lee Anne	St. John's
Johns, Kerri Michelle	Drover, Kerri Michelle	Pouch Cove
Luedy, Margaret Marie	Luedee, Margaret Marie	Stephenville Crossing
Murray, Ryan Michael	Spurvey, Ryan Michael Murray	Paradise
Bennett, Justin Raymond	Reid, Justin Raymond	Norris Point
Spurrell, John Stephen Joseph	Fleming, Joseph Michael	St. John's
Butler, Chad Wayne	Butler-Smith, Chad Wayne	St. John's
Clowe, Ryan Maxwell	King, Ryan Maxwell	St. John's
Delaney, Rebecca Diane	Keels, Rebecca Diane	Bell Island
Delaney, Reanna Marie	Keels, Reanna Marie	Bell Island
Herridge, Brady Gilbert	Francis, Brady Gilbert	Port aux Basques
Tobin, Jenna Barbara	McInnis, Jenna Barbara	St. George's
Reidpath, Katherine Ruth	Howse, Katherine Ruth	Torbay
Heffernan, Helen Barbara	Heffernan, Barbara Helen	Goulds
Hickey, Curtis Robert	Barron, Curtis Robert	St. John's
Manning, Hollie Elizabeth	Oakley, Hollie Elizabeth	St. John's
Williams, Samuel Joseph Dakota	Reid, Samuel Joseph Dakota	Green's Harbour
Thistle, Christopher James Patrick	Vere-Holloway, Christopher James Patrick	St. John's
Warren, Tamer William	Crant, Tamer William	Milltown
Leggo, Reginald	Snow, Derek Reginald	St. John's
Kendall, Sandra June	Kendall, Sandra June	Mount Pearl
Cummings, Cavel Catherine	Cunning, Cavel Catherine	Stephenville
Osbourne, Jasmine Helda Lilly Mae	Dominx, Jasmine Hilda Lily Mae	Gander
Bartlett, Andrew Roger	Mast, Andrew Roger	St. John's
Cooke, Scott Eric Carl	Saunders, Scott Eric Carl	Grand Falls-Windsor
Park, Meghan Roxanne Christine	Stanley, Meghan Roxanne Christine	Marystown
McQuarrie, Joseph Angus	MacQuarrie, Joseph Angus	Stephenville
Stacey, Sheila Catherine	Strickland, Sheila Catherine	Point May
Ivany, Megan Robin	McCarthy, Meghan Sandra	St. John's
McDonald, Michael	MacDonald, Michael Howard	Heatherton
Greenleaves, Kara Lynn	Mehmet, Kara Lynn	Happy Valley-Goose Bay
Finn, Ann-Margaret	Finn, Ann Margaret	Conception Bay South
Parsours, Caitlyn Aberniamia Mary	Mercer, Caitlyn Aberniamia Mary	Shearstown
Pretty, Brian Harold	Woodman, Brian Harold	Harbour Grace
Barratt, Anthony Gerard	Barrett, Anthony Gerard	Fleur de Lys
Lee, Robert Gerald Gordon	Lee-Hunt, Robert Gerald Gordon	Milltown
Hutley, Judy Darlene	Hancock, Judy Darlene	Roddickton
Phillips-Thompkins, William Craig	Jenkins, Craig William	Labrador City
Benoit, Margaret	Bennett, Margaret Rose	Corner Brook
Young, Chad Edward Alfred	Gillis, Chad Edward Alfred	Massey Drive
Duke, Chelsea Sonya	Warren, Chelsea Sonya	Cow Head

Dated this 6th day of August, 2012.

SERVICE NL
Ken Mullaly, Registrar
Vital Statistics

TRUSTEE ACT

ESTATE NOTICE

IN THE MATTER OF the Estate of MARY ISABELLE HEALEY, late of Grand Falls-Windsor, in the Province of Newfoundland and Labrador, Deceased.

All persons claiming to be creditors of or who have any claims or demands either as beneficiaries or next of kin (by blood, legal adoption or marriage) upon or affecting the Estate of MARY ISABELLE HEALEY, Gentlewoman, who died at Grand Falls-Windsor, NL on or about October 7th, 2011, are hereby requested to send particulars thereof in writing, duly attested, to the Office of the Public Trustee, 401 - 136 Crosbie Road, St. John's, NL, A1B 3K3, Administrator of the Estate of MARY ISABELLE HEALEY, on or before September 19th, 2012, after which date the said Administrator will proceed to distribute the Estate having regard only to the claims of which he then shall have had notice.

DATED at St. John's, this 7th day of August, 2012.

OFFICE OF THE PUBLIC TRUSTEE
Administrator of the Estate
of MARY ISABELLE HEALEY

ADDRESS FOR SERVICE:
401 - 136 Crosbie Road
St. John's, NL A1B 3K3

Aug 17



THE NEWFOUNDLAND AND LABRADOR GAZETTE

PART II

SUBORDINATE LEGISLATION FILED UNDER THE STATUTES AND SUBORDINATE LEGISLATION ACT

Vol. 87

ST. JOHN'S, FRIDAY, AUGUST 17, 2012

No. 33

Index

PART I

Change of Name Act, 2009 – Notice	321
Corporations Act – Notices	309
Lands Act – Notices	317
Mineral Act – Notice	314
Quieting of Titles Act – Notice	318
Trustee Act – Notice	322
Urban and Rural Planning Act, 2000 – Notices	317

PART II

CONTINUING INDEX OF SUBORDINATE LEGISLATION

Title of Act and Subordinate Legislation made thereunder	CNLR or NL Reg.	Amendment	NL Gazette Date & Page No.
--	--------------------	-----------	-------------------------------

**No Subordinate Legislation
Received at Time of Printing**

The Newfoundland and Labrador Gazette is published from the office of William E. Parsons, Queen's Printer.

Copy for publication must be received by **Friday, 4:30 p.m.**, seven days before publication date to ensure inclusion in next issue.

Advertisements must be submitted in either PDF format or as a MSWord file. When this is not possible, advertisements must be either typewritten or printed legibly, separate from covering letter. Number of insertions required must be stated and the names of all signing officers typewritten or printed.

Copy may be mailed to the address below, faxed to (709) 729-1900 or emailed to queensprinter@gov.nl.ca.

Advertising rates are available upon request. Subscription rate for *The Newfoundland and Labrador Gazette* is \$125.00 for 52 weeks plus applicable tax (\$131.25). Weekly issues of \$3.00 per copy, plus tax payable in advance.

All cheques, money orders, etc., should be made payable to THE NEWFOUNDLAND EXCHEQUER ACCOUNT and all correspondence should be addressed to: Office of the Queen's Printer, P. O. Box 8700, Ground Floor, East Block, Confederation Building, St. John's, NL A1B 4J6. Telephone (709) 729-3649. Fax: (709) 729-1900.

Web Site: <http://www.gs.gov.nl.ca/prINTER/index.html>

Place your order by contacting:
Office of The Queen's Printer
Confederation Building, East Block
St. John's, NL A1B 4J6
Telephone: (709) 729-3649 Fax: (709) 729-1900
email: queensprinter@gov.nl.ca

Government Information Product
Publication Rate Mail

G.S.T. # R107442683

All requests for Subscription and Legislation MUST be prepaid.