



THE NEWFOUNDLAND AND LABRADOR GAZETTE

PART I

PUBLISHED BY AUTHORITY

Vol. 87 ST. JOHN'S, FRIDAY, OCTOBER 19, 2012 No. 42

CORPORATIONS ACT

Corporations Act - Section 393
Local Incorporations
For the Month of: August 2012

Date	Number	Company Name	2012-08-06	68134	KODIAK CONTRACTING NL LTD.
2012-08-02	68116	68116 NEWFOUNDLAND AND LABRADOR INC.	2012-08-06	68135	RIGOR HOLDING LIMITED
2012-08-02	68113	TOPSAIL ENERGY SERVICES INC.	2012-08-06	68144	RIGOR LUX BRAND INCORPORATED
2012-08-02	68104	68104 NEWFOUNDLAND AND LABRADOR INC.	2012-08-06	68126	Fine Tuning Excavation Ltd.
2012-08-02	68110	NNAD Services Limited	2012-08-06	68127	White's West Coast Renovations Inc.
2012-08-02	68111	Natural Stone Creations Inc.	2012-08-06	68128	68128 NEWFOUNDLAND & LABRADOR INC.
2012-08-02	68112	Baccalieu HVAC-R & Propane Services Inc.	2012-08-06	68129	68129 NEWFOUNDLAND & LABRADOR LTD
2012-08-03	68125	68125 NEWFOUNDLAND AND LABRADOR LTD.	2012-08-07	68148	ACTIVELIFE PHYSIOTHERAPY AND WELLNESS INC.
2012-08-03	68122	AVP CUSTOM WIRING INC.	2012-08-07	68146	BIRCH TREE ENTERPRISES INC.
2012-08-03	68123	COLIMARO ENTERPRISES LTD.	2012-08-07	68145	DR. SIDING LTD
2012-08-03	68121	KBH CONSTRUCTION INC.	2012-08-07	68147	ROSE'S ELECTRICAL INC.
2012-08-03	68124	PANTHEON ENTERPRISES LTD.	2012-08-07	68130	68130 NEWFOUNDLAND & LABRADOR CORP
2012-08-03	68118	NL Diesel Vehicles Inc.	2012-08-07	68131	68131 NEWFOUNDLAND & LABRADOR CORP
2012-08-03	68119	Guardian Enterprises Inc.	2012-08-08	68154	PRIDE RESTAURANT ENTERPRISE INC.
2012-08-03	68120	Gracor Construction Inc.	2012-08-08	68149	Poppy's Trucking Inc
2012-08-06	68132	68132 NEWFOUNDLAND & LABRADOR INC.	2012-08-08	68150	Corner Brook Arts Centre Association Inc.
2012-08-06	68142	68142 NEWFOUNDLAND AND LABRADOR LTD.	2012-08-08	68151	Melissa's Boutique INC.
2012-08-06	68133	GALIN PRODUCTIONS INC.	2012-08-08	68152	DMT eLearning Inc.
2012-08-06	68141	GET INVESTMENTS LTD.	2012-08-08	68153	D&B ELECTRICAL LTD
			2012-08-09	68164	BERRY HILL AUTOMATION LTD.

THE NEWFOUNDLAND AND LABRADOR GAZETTE
October 19, 2012

2012-08-09	68169	DR. JEFFREY FIDEL PROFESSIONAL MEDICAL CORPORATION	2012-08-16	68213	68213 NEWFOUNDLAND & LABRADOR INC.
2012-08-09	68174	GHHM HOLDINGS LIMITED	2012-08-17	68228	2041 ENERGY INC.
2012-08-09	68171	KLEEN 4 YOU LIMITED	2012-08-17	68232	MATTHEW WHITE CONSTRUCTION INC.
2012-08-09	68166	MASON HOLDINGS LTD.	2012-08-17	68214	DRS Sales & Services Ltd.
2012-08-09	68167	PATRICK MARTIN'S TRUCKING INC.	2012-08-17	68223	68223 NEWFOUNDLAND & LABRADOR INC
2012-08-09	68168	THE ROCK OASIS DAY SPA INC.	2012-08-17	68224	68224 NEWFOUNDLAND & LABRADOR CORP
2012-08-09	68173	TSRL HOLDINGS LIMITED	2012-08-17	68225	68225 NEWFOUNDLAND & LABRADOR INC.
2012-08-09	68158	Danny Rowlands Inspection Limited	2012-08-17	68226	Technical Lift and Transport Limited
2012-08-09	68159	68159 NEWFOUNDLAND & LABRADOR LIMITED	2012-08-17	68227	Vinking Marine Enterprises Inc.
2012-08-09	68160	Drs. Lewis & Attwood Physicians PMC Inc.	2012-08-20	68245	BUSINESS RECRUITMENT SOLUTIONS INC.
2012-08-10	68178	CODROY COMMUNITY EVENTS COMMITTEE INC.	2012-08-20	68242	COMMUNITY YOUTH NETWORK CORNER BROOK & BAY OF ISLANDS YMCA SITE INCORPORATED
2012-08-10	68181	RESTORATION OF LABRADOR EXPLORATION SITES INCORPORATED	2012-08-20	68238	DR. CARL D. MOORES PROFESSIONAL MEDICAL CORPORATION
2012-08-10	68177	WILJON 2016 TOURS LTD.			DR. SOHAIL SAFI
2012-08-10	68165	Dr. Chris Sladden Professional Medical Corporation Inc.	2012-08-20	68237	PROFESSIONAL MEDICAL CORPORATION
2012-08-10	68172	Tri-Mar Enterprises Limited			K & S VENTURES INC.
2012-08-10	68176	Brakes Cove Construction Ltd.	2012-08-20	68240	PROGRESSIVE
2012-08-13	68189	68189 NEWFOUNDLAND AND LABRADOR LTD	2012-08-20	68241	ENGINEERING & CONSULTING INC.
2012-08-13	68190	68190 NEWFOUNDLAND & LABRADOR INC.			Garage Gear Inc.
2012-08-13	68191	GANNET TECHNOLOGIES INC.	2012-08-20	68234	LCR Venture Sales Inc.
2012-08-13	68185	The Cultural Artists Plan for Emergencies (CAPE) Fund Incorporated	2012-08-20	68235	Production Rigging Inc.
2012-08-13	68186	Fewer's Mechanical Services Inc.	2012-08-21	68236	CG HVAC SERVICES LTD.
2012-08-13	68187	Evans NewLeaf Landscaping Ltd	2012-08-21	68250	HOME REVIVALS INC.
2012-08-13	68188	Newfoundland and Labrador Fish and Wildlife Enforcement Officers Association Inc.	2012-08-21	68252	NEWFOUNDLAND ARMWRESTLING ASSOCIATION INC
2012-08-14	68202	CLARENVILLE MOVERS LTD.	2012-08-21	68253	SHADOWY SOULS INC.
2012-08-14	68200	NORTHSHORE PROJECTS INC.	2012-08-21	68251	T4T CONSTRUCTION & RENOVATIONS INC.
2012-08-14	68201	SUPERIOR HYGIENE LTD.	2012-08-21	68243	The Spindrift Brewing Company Limited
2012-08-15	68207	DICKS PAINTING CONTRACTORS LTD.	2012-08-21	68244	Sharron's Investments Limited
2012-08-15	68196	NJ Currie Holdings Incorporated	2012-08-21	68246	Pitcher Perfect Finish Carpentry Inc
2012-08-15	68203	68203 NEWFOUNDLAND & LABRADOR LTD.	2012-08-21	68247	GCG Enterprises Ltd
2012-08-15	68204	68204 NEWFOUNDLAND & LABRADOR LIMITED	2012-08-22	68262	CAMBUM FLOORING INC.
2012-08-15	68205	E.J. Crane Septic & Well Designs Ltd.	2012-08-22	68263	CANADA BERLENT TRADING CORP.
2012-08-15	68206	68206 NEWFOUNDLAND AND LABRADOR INCORPORATED	2012-08-22	68261	SHEA TWINS INDUSTRIAL INC.
2012-08-16	68220	K & K BUTCHERING SERVICES INC.	2012-08-22	68254	68254 NEWFOUNDLAND & LABRADOR LIMITED
2012-08-16	68215	NEWFOUNDLAND AND LABRADOR AMATUER TAEKWON DO UNION INC.	2012-08-22	68255	PREMIER HILL PROPERTIES INC.
2012-08-16	68208	Group M5 Inc.	2012-08-22	68256	D & R Holdings Inc.
2012-08-16	68209	GLP Inspection Services Inc.	2012-08-22	68257	Burton's Enterprises Ltd.
2012-08-16	68210	S'S PLASTER AND PAINT LTD	2012-08-22	68260	Sealand Shipping Services Ltd.
2012-08-16	68212	RYAN & MAHONEY DEVELOPMENTS INC.	2012-08-23	68272	BAKER STREET BAKERY INC.
			2012-08-23	68271	BUCKLE GROUP OF COMPANIES INC.
			2012-08-23	68273	SISTERLY LOVE & CO. LIMITED
			2012-08-23	68264	JEM Consulting Ltd.
			2012-08-23	68265	Maple Ridge Holdings Inc.
			2012-08-23	68266	Maple Ridge Homes Inc.

THE NEWFOUNDLAND AND LABRADOR GAZETTE
October 19, 2012

2012-08-24	68281	68281 NEWFOUNDLAND & LABRADOR LTD.	2012-08-31	68332	Leah Rose Gifts and Home Decor Inc.
2012-08-24	68280	B-TECH INSPECTIONS INC.	2012-08-31	68333	JJS Contracting Limited
2012-08-24	68283	LEADING EDGE CONCRETE LTD.	Total Incorporations: 156		
2012-08-24	68278	LJ O'BRIEN CONSULTING INC.			
2012-08-24	68285	M D J MECHANICAL INC	<i>Corporations Act - Section 331</i>		
2012-08-24	68284	NATURA FEEDS LTD.	Local Revivals		
2012-08-24	68282	SUNSACTIONS TANNING PLUS INC.	For the Month of: August 2012		
2012-08-24	68274	68274 NEWFOUNDLAND & LABRADOR CORP	Date	Number	Company Name
2012-08-24	68276	68276 NEWFOUNDLAND & LABRADOR LIMITED	2012-08-10	3299	SWAN LUMBER AND CONSTRUCTION LIMITED
2012-08-27	68288	A & A MECHANICAL LIMITED	2012-08-21	11542	Pier 5 Limited
2012-08-27	68290	EMERALDVALE DEVELOPMENT CORPORATION	2012-08-23	7099	THE NEWFOUNDLAND AND LABRADOR SCHOOL BOARDS ASSOCIATION
2012-08-27	68287	GBG MECHANICAL INC	2012-08-27	60525	Serenity Creek Living Inc.
2012-08-27	68286	68286 NEWFOUNDLAND & LABRADOR INC.	Total Revivals: 4		
2012-08-28	68302	68302 NEWFOUNDLAND AND LABRADOR LTD.	<i>Corporations Act - Section 296 and 393</i>		
2012-08-28	68300	HURRICANE PROJECT MANAGEMENT CO. LTD	Local Continuances		
2012-08-28	68299	PITTMAN SUBSEA CORPORATION	For the Month of: August 2012		
2012-08-28	68301	RNJ JANITORIAL SERVICES LTD.	Date	Number	Company Name
2012-08-28	68305	SPURGEON INVESTMENTS INC.	2012-08-06	68139	1323957 ALBERTA LTD.
2012-08-28	68294	A & K Holdings Limited	2012-08-10	3299	SWAN LUMBER AND CONSTRUCTION LIMITED
2012-08-28	68295	JACKLADDER PROPERTY LIMITED	2012-08-22	11542	Pier 5 Limited
2012-08-28	68296	RYAN SENIOR INSTRUMENTATION LTD.	2012-08-23	7099	THE NEWFOUNDLAND AND LABRADOR SCHOOL BOARDS ASSOCIATION
2012-08-28	68297	MSL Holdings Ltd.	Total Continuances: 4		
2012-08-29	68316	CAPE HARRISON ATLANTIC CORPORATION	<i>Corporations Act - Section 286</i>		
2012-08-29	68314	PENNYWELL GIFTS INC.	Local Amendments		
2012-08-29	68315	PETER JORDAN ORTHOTIC AND ADAPTIVE SEATING LTD	For the Month of: August 2012		
2012-08-29	68310	68310 NEWFOUNDLAND & LABRADOR INC.	Date	Number	Company Name
2012-08-29	68311	Valtrol Newfoundland Limited	2012-08-02	9102	Aurora Development Limited
2012-08-29	68312	Baker Construction Management Services Inc.	2012-08-02	59997	EAST COAST CLEANING INC
2012-08-29	68313	BLACKLER ENTERPRISES LIMITED	2012-08-02	67449	H & R REALTY DEVELOPMENT INC.
2012-08-30	68323	68323 NEWFOUNDLAND & LABRADOR INC.	2012-08-02	55379	WHIFFEN IMPORT EXPORT LIMITED
2012-08-30	68324	68324 NEWFOUNDLAND & LABRADOR INC.	2012-08-03	57790	CAMPANA HOLDINGS LIMITED
2012-08-30	68327	68327 NEWFOUNDLAND & LABRADOR INC.	2012-08-03	51599	JULMAR HOLDINGS LIMITED
2012-08-30	68321	CAB HOLDINGS INC.	2012-08-03	57788	TREETOPS HOLDINGS INC.
2012-08-30	68320	OF THE NORTH BEVERAGE CORP.	2012-08-06	48995	DIVERSIFIED SUPPLY & RENTALS INC.
2012-08-30	68322	WIMBLETON'S ENTERPRISES INC.	2012-08-06	67079	KEPPEL ISLAND CONSTRUCTION & ELECTRICAL INC.
2012-08-30	68319	All In 1 Auto Ltd.	2012-08-07	30412	Pardy's Recreation and Marine Ltd.
2012-08-31	68331	Dr. Robert G. P. Forsey Professional Medical Corporation	2012-08-08	45185	ATLANTIC XL INC.
			2012-08-09	51025	51025 NEWFOUNDLAND & LABRADOR INC.
			2012-08-09	51026	51026 NEWFOUNDLAND & LABRADOR INC.

THE NEWFOUNDLAND AND LABRADOR GAZETTE
October 19, 2012

2012-08-09	65334	65334 NEWFOUNDLAND AND LABRADOR LIMITED	2012-08-24	64534	AYLWARD & ASSOCIATES CONSULTING INC.
2012-08-09	44007	Johnson GEO CENTRE Foundation Inc	2012-08-24	43454	Combined Councils of Labrador Inc.
2012-08-09	63877	MAYBEE HOLDINGS LIMITED	2012-08-24	17403	Cormiers' Dairy Limited
2012-08-09	63878	MAYBEE INVESTMENTS LIMITED	2012-08-24	65971	DRS. COLLARD AND WILLIAMS DENTAL INC.
2012-08-09	64545	SHARPE PROPERTIES INC.	2012-08-24	44731	Sea Warrior II Ltd.
2012-08-09	63890	SIMMONS HOLDINGS LIMITED	2012-08-24	66217	St. John's Aquarium Incorporated
2012-08-09	63889	SIMMONS INVESTMENTS LIMITED	2012-08-24	7099	THE NEWFOUNDLAND AND LABRADOR SCHOOL BOARDS ASSOCIATION
2012-08-10	67439	ATLANTIC HSE ENERGY CONSULTING INC.	2012-08-27	40385	50 CENTURIES' CULTURES SOCIETY INC.
2012-08-10	67438	NOEM INVESTMENTS INC.	2012-08-27	63024	CHRIS COLLETT HOMES LTD.
2012-08-10	22161	RAS HOLDINGS LIMITED	2012-08-27	52177	G.R.P. ENTERPRISES LTD.
2012-08-10	16015	Sheaves Holding Limited	2012-08-27	62696	Plank Road Holdings Ltd.
2012-08-10	58815	TRADEMARK CONTRACTING LTD	2012-08-27	43124	The Idea Factory Inc.
2012-08-13	65371	BUTLERVILLE YOUTH RECREATIONAL SOFTBALL INC.	2012-08-28	67012	67012 NEWFOUNDLAND & LABRADOR LTD.
2012-08-13	67886	NASH WEALTH MANAGEMENT INC.	2012-08-29	38988	Birch Hills Lounge Limited
2012-08-13	28943	P & B Enterprises Limited	2012-08-29	57957	SANDY LAKE LODGE OUTFITTERS LIMITED
2012-08-14	57377	BENEVOLENT IRISH SOCIETY CHARITABLE FOUNDATION INC.	2012-08-29	45482	Specialty Homes Ltd.
2012-08-16	59571	59571 NEWFOUNDLAND AND LABRADOR INC.	2012-08-30	60998	SEA FAIR CAPITAL INC.
2012-08-16	48229	BUTLER GROUP LIMITED	2012-08-30	67345	THE REPAIR PLACE (2012) LIMITED
2012-08-16	66754	Itam Holdings Inc.	2012-08-31	68214	DRS Sales & Services Ltd.
2012-08-16	65922	ROD'S PLUMBING LTD	2012-08-31	63616	SOLD BY DESIGN INC.
2012-08-16	25259	WESTVIEW HOLDINGS LIMITED	2012-08-31	22740	The Dispensary Ltd.
2012-08-17	48422	DJD Enterprises Ltd.	2012-08-31	65263	U-TURN DROP IN CENTER CORP.
2012-08-17	26221	SPINAL CORD INJURY NEWFOUNDLAND AND LABRADOR INC.	Total Amendments: 76		
2012-08-20	47872	Austin's Contracting Inc.	<i>Corporations Act - Section 335</i>		
2012-08-20	14652	IGLOO LAKE LODGE LTD.	Local Dissolutions		
2012-08-20	65406	Johnson's Concrete Ltd.	For the Month of: August 2012		
2012-08-20	2103	MUNN INSURANCE LIMITED	Date	Number	Company Name
2012-08-21	60463	BEVEY MEDIPHARM LIMITED	2012-08-02	57511	AJM HOLDINGS LIMITED
2012-08-22	65667	B & R Consulting Ltd.	2012-08-02	63328	Blue Flame Propane Ltd.
2012-08-22	60756	CORMAR ENTERPRISES INC.	2012-08-03	44164	Holistic Therapy Professional Dog Grooming Inc.
2012-08-22	67909	MAJOR'S LOGGING LIMITED	2012-08-03	53796	JATH HOLDINGS INC.
2012-08-22	67776	NOBLE RESOURCES (2012) INC.	2012-08-03	57322	KJ STAMP CARPENTRY CONTRACTORS INC
2012-08-22	11542	Pier 5 Limited	2012-08-06	8606	Cyril Follett Limited
2012-08-22	68162	PUGLISEVICH CREWS AND SERVICES LIMITED	2012-08-06	50331	NOBLE'S FOREST RESOURCES INC.
2012-08-22	62489	TerEm Enterprises Ltd.	2012-08-08	49175	IMV Projects Atlantic Inc.
2012-08-23	67361	67361 NEWFOUNDLAND AND LABRADOR INC.	2012-08-09	58708	BONTOR UNITED CORP.
2012-08-23	49906	G & G AUTO SALES LTD.	2012-08-10	41656	ARP ENTERPRISES LTD.
2012-08-23	54379	MAINLAND HERITAGE COMMITTEE CORPORATION	2012-08-10	34088	ASKA SALES LIMITED
2012-08-23	46905	NEWFOUNDLAND AND LABRADOR ECONOMIC DEVELOPERS ASSOCIATION INC	2012-08-10	22153	BAYSIDE MANOR LIMITED
2012-08-23	40132	SHARRON'S SALES & SERVICE LTD.	2012-08-10	38382	H. F. P. RECYCLING LTD.
2012-08-23	66407	TONY DAWE HOLDINGS INC.	2012-08-10	62691	Joy Hecht Consulting, Ltd.
			2012-08-13	31675	CAROL HOLDINGS LIMITED
			2012-08-13	30930	Strong Holdings Ltd.
			2012-08-14	52501	BRADYS CONTRACTING LTD.
			2012-08-14	50171	FLAKE HOUSE INC.
			2012-08-14	63205	LILY DEVELOPMENT INC.
			2012-08-14	38813	Sound Scape Productions LTD.
			2012-08-16	66175	GeoServices Consulting Ltd.
			2012-08-16	40862	Jefford's Agencies Ltd.

THE NEWFOUNDLAND AND LABRADOR GAZETTE
October 19, 2012

2012-08-17	34022	HERMOSA PROJECTS LTD.	2012-08-15	68211	STRAIT STAR LIMITED
2012-08-20	25570	Avalon Consultants Inc.	From:	68104	68104 NEWFOUNDLAND
2012-08-21	44573	Christa Gail Two Ltd.			AND LABRADOR INC.
2012-08-21	29321	SHIP COVE CREAMERY LIMITED		19678	Straits Star Limited
2012-08-24	47126	ATLANTIC ENERGY SERVICES (A.E.S.) INC.	2012-08-21	68259	VALLEY BUSINESS EQUIPMENT INC.
2012-08-24	38653	INNOVATIVE PHOTOGRAPHY INC.	From:	67894	Taylor Holdings Ltd.
2012-08-27	20761	B & D HOLDINGS LIMITED		41467	Valley Business Equipment Inc.
2012-08-27	17189	Doug Comerford Agencies Limited	2012-08-29	68317	BAINE JOHNSTON PROPERTIES LIMITED
2012-08-27	64244	Extreme Comfort NL Inc.	From:	57228	BAINE JOHNSTON PROPERTIES LIMITED
2012-08-27	57936	FRESHWATER CONVENIENCE CAFE & DELI LTD.		47105	CAPE HARRISON MARINE CORPORATION
2012-08-27	60604	KRT Development Inc.		47106	NORTH ATLANTIC SHIPPING CORPORATION
2012-08-27	5254	MURDA HOLDINGS LIMITED	2012-08-31	68337	KARWOOD CONTRACTING LTD.
2012-08-28	18255	DemCon Construction Limited			11206 Newfoundland Limited
2012-08-28	58499	TEKSYS COMPUTERS INC.	From:	46897	Karwood Contracting Ltd.
2012-08-29	49181	Second Chance Enterprises Limited		42440	
2012-08-30	56359	DJKA HOLDINGS LTD.	2012-08-31	68330	NIGEL HOLDINGS LIMITED
2012-08-31	64606	Aunt Bees Cleaning Services, Inc.	From:	50255	DR. RICHARD HARLEY HOLDINGS LIMITED
2012-08-31	11764	C. & O. COMPANY LIMITED			NIGEL HOLDINGS LIMITED
2012-08-31	45773	D & G Fisheries Inc.		50254	

Total Dissolutions: 41

Total Amalgamations: 7

Corporations Act - Section 299
Local Discontinuances
For the Month of: August 2012

Date	Number	Company Name
2012-08-02	40964	THE CELTIC MANOR RESORT LTD.
2012-08-03	56014	DR. JOHN OLARTE PROFESSIONAL MEDICAL CORPORATION
2012-08-16	56702	STEARBROOK HOLDINGS LTD.
2012-08-21	50621	50621 NEWFOUNDLAND & LABRADOR INC.

Total Discontinuances: 4

Corporations Act - Section 286
Local Name Changes
For the Month of: August 2012

Number	Company Name
67449	H & R REALTY DEVELOPMENT INC.
2012-08-02 From:	H&RW REALTY DEVELOPMENT COMPANY LTD.
67079	KEPPEL ISLAND CONSTRUCTION & ELECTRICAL INC.
2012-08-06 From:	Kepole Island Construction & Electrical Inc.
67886	NASH WEALTH MANAGEMENT INC.
2012-08-13 From:	67886 NEWFOUNDLAND AND LABRADOR INC.
67776	NOBLE RESOURCES (2012) INC.
2012-08-22 From:	67776 NEWFOUNDLAND & LABRADOR LTD.
67361	67361 NEWFOUNDLAND AND LABRADOR INC.
2012-08-23 From:	THE REPAIR PLACE LIMITED
66407	TONY DAWE HOLDINGS INC.
2012-08-23 From:	66407 NEWFOUNDLAND & LABRADOR INC.
64534	AYLWARD & ASSOCIATES CONSULTING INC.
2012-08-24 From:	AYLWARD ABORIGINAL CONSULTING INC.

Corporations Act - Section 294
Local Amalgamations
For the Month of: August 2012

Date	Number	Company Name
2012-08-03	68143	PRECISION AUTOMOTIVE INC.
From:	18517	Elliott's Garage Limited
	67897	PRECISION AUTOMOTIVE INC.
2012-08-09	68162	PUGLISEVICH CREWS AND SERVICES LIMITED
From:	18292	PUGLISEVICH CREWS AND SERVICES LIMITED
	14478	PUGLISEVICH OILFIELD CONSULTANTS (INTERNATIONAL) LIMITED

THE NEWFOUNDLAND AND LABRADOR GAZETTE
October 19, 2012

52177		G.R.P. ENTERPRISES LTD.	2012-08-23	68268	WORLD FUEL SERVICES
2012-08-27	From:	G.R. PENNEY LTD.			CANADA, INC.
60998		SEA FAIR CAPITAL INC.	2012-08-24	68279	FPC LEASING
2012-08-30	From:	WHELAN CAPITAL INC.	2012-08-24	68277	CORPORATION
67345		THE REPAIR PLACE (2012)			PEOPLES TRUST COMPANY/
		LIMITED			COMPAGNIE DE FIDUCIE
2012-08-30	From:	Parts Shop (2012) Limited	2012-08-27	68291	PEOPLES
					HARBOUR AUTHORITY OF
					ST. BRIDES
Total Name Changes: 10			2012-08-28	68303	JOHN SHEA INSURANCE
					BROKERS LTD.
<i>Corporations Act - Section 443</i>			2012-08-28	68304	ROBINUNIVERSAL CORP.
Extra-Provincial Registrations			2012-08-28	68309	TMG RISK MANAGEMENT
For the Month of: August 2012					SERVICES INC.
			2012-08-29	68318	MUSTANG CANADA, INC.
Date	Number	Company Name	2012-08-30	68326	8268240 CANADA INC.
2012-08-02	68115	4441290 CANADA INC.	2012-08-30	68328	G&C PROPERTY HOLDINGS
2012-08-02	68114	TRH HOLDINGS LTD.			LIMITED
2012-08-06	68140	MONDELEZ CANADA INC.	2012-08-30	68325	HARBOUR AUTHORITY OF
2012-08-06	68137	NATIONAL CREDIT			NEWMANS COVE
		RECOVERY INC.	2012-08-30	68329	JUNEX INC.
2012-08-06	68136	OCEAN STEEL &	2012-08-31	68336	MATRIX SME CANADA ULC
		CONSTRUCTION LTD.			
2012-08-08	68157	175042 CANADA INC.	Total Registrations: 45		
2012-08-08	68156	BIRCH HILL TELECOM			
		CORP.			
2012-08-08	68155	CENTREROCK MINING	<i>Corporations Act - Section 451</i>		
		LIMITED	Extra-Provincial Name Changes		
2012-08-09	68161	HARBOUR AUTHORITY OF	For the Month of: August 2012		
		SEAL COVE, CONNAIGRE			
		BAY	Number	Company Name	
2012-08-09	68163	HL EMD LLC	62225	CGGVERITAS SERVICES SA	
2012-08-10	68175	ORTIZ PIPING DESIGN CAD	2012-08-03	From:	CGGVERITAS SERVICES SA
		SERVICE INC			
2012-08-10	68180	PARTY PACKAGERS INC.	59392		COBALT MANAGEMENT
2012-08-13	68195	EXP ENERGY SERVICES			CORPORATION
		LTD./LES SERVICES EXP	2012-08-03	From:	COBALT CS COMPANY LIMITED
		ÉNERGIE LTÉE.			
2012-08-13	68192	HARBOUR AUTHORITY OF	61584		ENTERPRISE RENT-A-CAR
		POUCH COVE			CANADA COMPANY/LA
2012-08-13	68193	NORCONSULT AS			COMPAGNIE DE LOCATION
2012-08-13	68194	VIDACARE CORPORATION	2012-08-06	From:	D'AUTOS ENTERPRISE CANADA
2012-08-14	68198	ASIG CANADA LTD.			ENTERPRISE RENT-A-CAR
2012-08-14	68197	ASIG GROUND HANDLING			CANADA LIMITED/ENTERPRISE
		CANADA LTD.			LOCATION D'AUTOS CANADA
2012-08-14	68199	CLICKBUTTON MARKETING			LIMITEE
		INC.	62104		NISSAN CANADA AUTO
2012-08-16	68217	CANADIAN FUNERAL			RECEIVABLES ULC
		PROGRAMS INC.	2012-08-06	From:	NISSAN CANADA AUTO
2012-08-16	68218	FMI ATLANTIC INC.			RECEIVABLES 1 INC.
2012-08-16	68222	HARBOUR AUTHORITY OF			
		BAINE HARBOUR AND	52686		RBC INVESTOR SERVICES TRUST
		RUSHOON			FIDUCIE RBC SERVICES AUX
2012-08-16	68216	INTERRE INSURANCE			INVESTISSEURS
		SERVICES LIMITED	2012-08-06	From:	RBC DEXIA INVESTOR SERVICES
2012-08-17	68229	BRANDT FINANCE LTD.			TRUST FIDUCIE RBC DEXIA
2012-08-17	68231	HARBOUR AUTHORITY OF			SERVICES AUX INVESTISSEURS
		COMFORT COVE			
2012-08-17	68230	VINDUM ENGINEERING,	53186		YELLOW PAGES GROUP CORP.
		INC.			GROUPE PAGES JAUNES CORP.
2012-08-20	68239	FRANKLIN COVEY	2012-08-07	From:	YELLOW PAGES GROUP
		CANADA, LTD.			CO./GROUPE PAGES JAUNES CIE.
2012-08-21	68248	HARBOUR AUTHORITY OF	2012-08-07	From:	YELLOW PAGES GROUP
		SOUTHERN HARBOUR			LTD./GROUPE PAGES JAUNES
2012-08-22	68258	6793452 CANADA INC.			LTÉE
2012-08-23	68267	3095891 NOVA SCOTIA			
		LIMITED	53186		YELLOW PAGES GROUP
2012-08-23	68269	8277516 CANADA INC.			LTD./GROUPE PAGES JAUNES
2012-08-23	68270	FUGRO GEOSURVEYS INC.			LTÉE

THE NEWFOUNDLAND AND LABRADOR GAZETTE

October 19, 2012

2012-08-07	From:	YELLOW PAGES GROUP CO./GROUPE PAGES JAUNES CIE.	2012-08-16	68219	DWS DATA WIRING SOLUTIONS INC.
2012-08-07	From:	YELLOW PAGES GROUP LTD./GROUPE PAGES JAUNES LTÉE	From:	63922	DWS DATA WIRING SOLUTIONS INC.
60455		EDF RENEWABLE SERVICES INC.	2012-08-16	68221	DWS DATA WIRING SOLUTIONS INC.
2012-08-14	From:	ENXCO SERVICE CANADA INC.	From:	68219	DWS DATA WIRING SOLUTIONS INC.
52644		BENTON CAPITAL CORP.		67150	SAINSBURY CONTRACTING INCORPORATED
2012-08-16	From:	BENTON RESOURCES CORP.			
57455		HUB INTERNATIONAL HKMB LIMITED	2012-08-17	68233	HUB INTERNATIONAL HKMB LIMITED
2012-08-17	From:	HKMB HUB INTERNATIONAL LIMITED	From:	57455	HUB INTERNATIONAL HKMB LIMITED
67709		KPGP INC.	2012-08-23	68275	FUGRO CANADA CORP.
2012-08-24	From:	KRUGER PRODUCTS G.P. II INC. PRODUITS KRUGER G.P. II INC.	From:	5866F	FUGRO AIRBORNE SURVEYS CORP.
				68270	FUGRO GEOSURVEYS INC.
67456		FORGE FIRST ASSET MANAGEMENT INC.	2012-08-27	68293	MICROSOFT CANADA CO./MICROSOFT CANADA CIE
2012-08-29	From:	CEDARBUSH INVESTMENT MANAGEMENT INC.	From:	6704F	MICROSOFT CANADA INC.
Total Name Changes: 12			2012-08-27	68298	MICROSOFT CANADA INC.
			From:	68293	MICROSOFT CANADA CO./MICROSOFT CANADA CIE
<i>Corporations Act - Section 294</i>					
Extra-Provincial Registrations for Amalgamation					
For the Month of: August 2012					
Date	Number	Company Name	2012-08-27	68289	ZALE CANADA CO.
2012-08-02	68117	AXON SOLUTIONS (CANADA) INC.	From:	5350F	Zale Canada Co.
From:	54838	AXON SOLUTIONS (CANADA) INC.	2012-08-27	68292	ZALE CANADA CO.
			From:	68289	ZALE CANADA CO.
2012-08-06	68138	BHP BILLITON CANADA INC.	2012-08-28	68307	CARDINAL HEALTH CANADA INC.
From:	62918	BHP BILLITON CANADA INC.	From:	62858	CARDINAL HEALTH CANADA INC.
2012-08-10	68183	NORTHSTAR CONSTRUCTION LIMITED	2012-08-28	68306	FIRST INSURANCE FUNDING OF CANADA INC.
From:	5916F	NORTHSTAR CONSTRUCTION LIMITED	From:	55846	MACQUARIE PREMIUM FUNDING INC./ FINANCEMENT PRIMES MACQUARIE INC.
2012-08-10	68182	PENNECON ENERGY HYDRAULIC SYSTEMS LIMITED	2012-08-28	68308	HERSHEY CANADA INC.
From:	5025F	PENNECON ENERGY HYDRAULIC SYSTEMS LIMITED	From:	5043F	HERSHEY CANADA INC.
2012-08-10	68184	PENNECON ENERGY HYDRAULIC SYSTEMS LIMITED	2012-08-31	68335	AGF INVESTMENTS INC./PLACEMENTS AGF INC.
From:	68183	NORTHSTAR CONSTRUCTION LIMITED	From:	67264	AGF INVESTMENTS INC./PLACEMENTS AGF INC.
	68182	PENNECON ENERGY HYDRAULIC SYSTEMS LIMITED	Total Registrations for Amalgamation: 18		
2012-08-10	68179	SYSCO CANADA, INC.	DEPARTMENT OF SERVICE NL		
From:	65694	SYSCO CANADA, INC.	Dean Doyle, Registrar of Companies		
			Oct 19		

JUDICATURE ACT

**SUPREME COURT OF NEWFOUNDLAND AND LABRADOR
TRIAL DIVISION**

Rules of the Supreme Court, 1986

**PRACTICE NOTE
P.N. (TD) No. 2012-01**

DATE ISSUED: October 15th, 2012

RULES AFFECTED: Rules 29 and 56A of the *Rules of the Supreme Court, 1986*
Rules 12-20 of the *Criminal Proceedings Guidelines*

EFFECTIVE DATE: Upon Publication

PREVIOUS PRACTICE NOTES REVISED: N/A

The following Practice Note is published pursuant to Rule 4.04 of the *Rules of the Supreme Court, 1986*.

APPLICATIONS

Background and Purpose

1. Late filing of documents for applications may lead to requests for the adjournment of proceedings; on occasion, administrative delays in processing filed documents may result in the material not being included in the file brought to the judge. This Practice Note addresses filing and format requirements.
2. This Practice Note applies to all applications in both the General Division and the Family Division of the Court unless otherwise noted.

Practice Note

3. All applications and related documents should be filed in accordance with the Rules 29 and 56A of the *Rules of the Supreme Court, 1986* and the Rules 12-20 of *Criminal Proceedings Guidelines*. The deadlines in particular should be noted. Failure to meet a deadline for filing materials for an application may result in adverse cost consequences or delay of the proceeding.
4. Your attention is drawn to the requirement under the Rules that an information box like the one below is required on all documents for civil and criminal applications (except family).

SUMMARY OF CURRENT DOCUMENT

Court File Numbers(s):

Date of Filing of Document:

Name of Filing Party or Person:

Application to which Document
being filed relates:

Statement of purpose in filing:

Court Sub-File Number, if any

5. Applications and all documents to be used in applications in the General Division in St. John's must be filed in the Applications Registry on the third floor of the Court House.
6. Starting immediately, when filing documents for applications that will be heard in the next three sitting days of the Court, you must advise Registry staff of the date of the hearing. You may do this either verbally when the documents

are dropped off or in writing on the envelope containing the documents. It would be helpful to provide this information for all applications; however, it is only mandatory for those applications that will be heard in the next three sitting days of Court.

7. Where documents are brought to the Registry for filing after the deadline required by the Rules, Registry staff will take the document but it will not be filed. Late documents will be brought to the attention of the judge who will be hearing the application but a decision with respect to whether it will be filed will not be made until the hearing of the application. Parties who file documents late should expect to be asked to make submissions at the hearing on why the Court should permit filing of the document. If the document is not filed, it will be returned during the hearing. If the judge allows the document to be filed, it will be entered accordingly.

Authorized by:

David B. Orsborn
CHIEF JUSTICE OF THE SUPREME COURT
OF NEWFOUNDLAND AND LABRADOR,
TRIAL DIVISION

REGISTRAR OF THE SUPREME COURT
OF NEWFOUNDLAND AND LABRADOR

Oct 19

URBAN AND RURAL PLANNING ACT

**NOTICE OF REGISTRATION
TOWN OF CARBONEAR
MUNICIPAL PLAN AMENDMENT No. 15, 2012,
and
DEVELOPMENT REGULATIONS
AMENDMENT No. 24, 2012**

TAKE NOTICE that the TOWN OF CARBONEAR Municipal Plan Amendment No. 15, 2012, and Development Regulations Amendment No. 24, 2012, adopted by Council on the 26th day of June, 2012, has been registered by the Minister of Municipal Affairs.

A site immediately west of the Carbonear General Hospital has been selected for a new long-term care facility. Land to the east of Highroad South is required for additional parking in support of the hospital and long-term care facility. Municipal Plan Amendment No. 15, 2012, will re-designate this area of land required for additional parking, from Residential to Public Buildings.

Development Regulations Amendment No. 24, 2012, will re-zone the same areas of land as described above from Residential Medium Density to Public Buildings.

The TOWN OF CARBONEAR Municipal Plan Amendment No. 15, 2012, and Development Regulations Amendment No. 24, 2012, comes into effect on the day that this notice is published in *The Newfoundland and Labrador Gazette*. Anyone who wishes to inspect a copy of the TOWN OF CARBONEAR Municipal Plan Amendment No. 15, 2012, and Development Regulations Amendment No. 24, 2012, may do so at the Town Office, Carbonear during normal working hours.

TOWN OF CARBONEAR
Cynthia Davis, Town Clerk

Oct 19

**NOTICE OF REGISTRATION
TOWN OF PORT HOPE SIMPSON
MUNICIPAL PLAN AMENDMENT No. 2, 2012,
and
DEVELOPMENT REGULATIONS AMENDMENT
No. 2, 2012**

TAKE NOTICE that the TOWN OF PORT HOPE SIMPSON Municipal Plan Amendment No. 2, 2012, and Development Regulations Amendment No. 2, 2012, adopted by Council on the 26th day of March, 2012, has been registered by the Minister of Municipal Affairs.

Municipal Plan Amendment No. 2, 2012, will re-designate an area of land from Recreation to Residential. Development Regulations Amendment No. 2, 2012, will re-zone the same area of land from Recreation to Residential.

The TOWN OF PORT HOPE SIMPSON Municipal Plan Amendment No. 2, 2012, and Development Regulations Amendment No. 2, 2012, comes into effect on the day that this notice is published in *The Newfoundland and Labrador Gazette*. Anyone who wishes to inspect a copy of the TOWN OF PORT HOPE SIMPSON Municipal Plan Amendment No. 2, 2012, and Development Regulations Amendment No. 2, 2012, may do so at the Town Office, Port Hope Simpson during normal working hours.

TOWN OF PORT HOPE SIMPSON
Joyce Clarke, Town Clerk

Oct 19

LANDS ACT

**NOTICE OF INTENT
Lands Act c36, SNL 1991, as amended**

NOTICE IS HEREBY given that AUSTIN BURRY of P.O. Box 160, Glovertown, NL A0G 2L0 intends to apply to the Department of Environment and Conservation, two months from the publication of this Notice, to acquire title, pursuant to Section 7 (2) (e) of the said Act, to that piece of Crown land situated within fifteen (15) metres of the waters of Alexander Bay, NL, in the Electoral District of Terra Nova for the purpose of wharf construction.

The land is described as follows: A triangular water lot as follows:

*Bounded on the North by
property of A. Burry (formerly Mary Burry)
for a distance of 14.16 metres;
Bounded on the East by property of George Sparkes
for a distance of 7.02 metres;
Bounded on the South west by water
for a distance of 16.80 metres;
and containing an area
of approximately 60.4 square metres.*

Any person wishing to object to the application must file the objection, in writing, within one month from the publication of this Notice, with reasons for it, to the Minister of Environment and Conservation, and mail to the nearest Regional Lands Office:

(Choose Area Applicable)

c/o Eastern Regional Lands Office, P.O. Box 8700, Howley Building, Higgins Line, St. John's, NL, A1B 4J6.

c/o Central Regional Lands Office, P.O. Box 2222, Gander, NL, A1V 1L7.

c/o Western Regional Lands Office, P.O. Box 2006, Sir Richard Squires Building, Corner Brook, NL, A2H 6J8.

c/o Labrador Regional Lands Office, P.O. Box 3014, Station "B", Happy Valley-Goose Bay, NL, A0P 1E0.

For further information on the proposed application, please contact: Bob Kennedy, Telephone Number (709) 685-4345.

Oct 19

MECHANICS' LIEN ACT

**NOTICE OF INTENTION TO RELEASE
MECHANICS' LIEN HOLDBACK
PURSUANT TO SECTION 12 OF THE
MECHANICS' LIEN ACT, RSNL cM-3 (THE "ACT")**

PURSUANT TO section 12 of the Act, and in relation to a contract A4VI-90-CG0011 entered into between VALE NEWFOUNDLAND AND LABRADOR Limited and Mammoet Hunts Atlantic Ltd. which contract is dated as of July 26th, 2010, notice is hereby given of the intention of

VALE NEWFOUNDLAND AND LABRADOR LIMITED, to the release of mechanics' lien holdback funds 30 days following the date of this notice.

Dated at St. John's, NL, this 8th day of October 2012.

FLUOR CANADA LIMITED
Troy Gilson, Project Contracts Manager
(acting as Agent for Vale NL Limited)

Oct 12, 19, 26 & Nov 2

**NOTICE OF INTENTION TO RELEASE
MECHANICS' LIEN HOLDBACK
PURSUANT TO SECTION 12 OF THE
MECHANICS' LIEN ACT, RSNL cM-3 (THE "ACT")**

PURSUANT TO section 12 of the Act, and in relation to a contract A4VI-10-CG0028 entered into between VALE NEWFOUNDLAND AND LABRADOR LIMITED and Capital Ready Mix Limited which contract is dated as of February 8th, 2010, notice is hereby given of the intention of VALE NEWFOUNDLAND AND LABRADOR LIMITED, to the release of mechanics' lien holdback funds 30 days following the date of this notice.

Dated at St. John's, NL, this 10th day of October, 2012.

FLUOR CANADA LIMITED
Troy Gilson, Project Contracts Manager
(acting as Agent for Vale NL Limited)

Oct 19, 26, Nov 2 & 9

**NOTICE OF INTENTION TO RELEASE
MECHANICS' LIEN HOLDBACK
PURSUANT TO SECTION 12 OF THE
MECHANICS' LIEN ACT, RSNL cM-3 (THE "ACT")**

PURSUANT TO section 12 of the Act, and in relation to a contract A4VI-10-CB0007 entered into between VALE NEWFOUNDLAND AND LABRADOR LIMITED and H.J. O'Connell Limited which contract is dated as of February 03rd, 2010, notice is hereby given of the intention of VALE NEWFOUNDLAND AND LABRADOR LIMITED, to the release of mechanics' lien holdback funds 30 days following the date of this notice.

Dated at St. John's, NL, this 12th day of October, 2012.

FLUOR CANADA LIMITED
Troy Gilson, Project Contracts Manager
(acting as Agent for Vale NL Limited)

Oct 19, 26, Nov 2 & 9

QUIETING OF TITLES ACT

**2012 05G 10181
IN THE SUPREME COURT OF
NEWFOUNDLAND AND LABRADOR
TRIAL DIVISION (GENERAL)**

NOTICE OF APPLICATION under the *Quieting of Titles Act*, RSNL 1990, cQ-3, as amended (the "Act")

NOTICE IS HEREBY given to all parties that CAROL ANN READER, of the City of Toronto, in the Province of Ontario, has applied to the Supreme Court, Trial Division, Gander, to have title to all that piece or parcel of property situate at Bloomfield, in the Province of Newfoundland and Labrador, which property is more particularly described in Schedules "A" and "C" hereto annexed and shown in Schedules "B" and "D" hereto annexed.

ALL BEARINGS aforementioned, for which CAROL ANN READER claims to be the owner investigated and for a Declaration that she is the absolute owner in fee simple in possession and the said CAROL ANN READER has been ordered to public Notice of Application as required by the above named Act.

All persons having title adverse to the said title claimed by the said CAROL ANN READER shall file in the Registry of the Supreme Court of Newfoundland and Labrador, Trial Division, Gander, particulars of such adverse claim and serve the same together with an Affidavit verifying same on the undersigned Solicitors for the Petitioner on or before the 9th, day of November, 2012, after which date no party having any claim shall be permitted to file the same or to be heard except by special leave of the Court and subject to such conditions as the Court may deem just.

All such adverse claims shall be investigated then in such manner as the Supreme Court of Newfoundland and Labrador, Trial Division, Gander, may direct.

DATED AT Clarenville, in the Province of Newfoundland and Labrador, this 19th day of September, 2012.

MILLS PITTMAN LAW OFFICES
Solicitors for the Applicant
PER: Gregory K. Pittman

ADDRESS FOR SERVICE:
111 Manitoba Drive
Suite 201
Clarenville, NL A5A 1K2

Tel: (709) 466-2641
Fax: (709) 466-7109

SCHEDULE "A"

CAROL READER
Parcel "A"

BLOOMFIELD, NL
Job No. 11-088-1

ALL THAT piece or parcel of land situate at Bloomfield, in the Electoral District of Bonavista South, in the Province of Newfoundland and Labrador, abutted and bounded as follows, that is to say:

BEGINNING at a point, the said point having Grid Coordinates of North 5 360 992.309 metres and East 237 508.164 metres, as referenced to the meridian or (53) degrees west longitude of the Three Degree Transverse Mercator Projection (NAD83-1992 adjustment).

THENCE running by land described in a deed to Larry J. Noble and Hannah D. Russell, Registry of Deeds Registration No. 265734, south (59) degrees (35) minutes (00) seconds east, a distance of (15.290) metres;

THENCE south (16) degrees (09) minutes (00) seconds east, a distance of (10.800) metres;

THENCE south (53) degrees (26) minutes (00) seconds east, a distance of (61.204) metres;

THENCE running along the westerly limit of a Reservation, (10) metres wide, extending along the ordinary high water mark of Goose Bay, for a distance of (22) metres, more or less, to a point being distant (21.423) metres as measured on a bearing of south (28) degrees (45) minutes (09) seconds west from the previously described point;

THENCE running by land described in a deed to James Reader and Gerald Reader, Registry of Deeds Registration No. 122372, north (56) degrees (12) minutes (53) seconds west, a distance of (60.825) metres;

THENCE running by land described in a deed to Triple P Automotive Limited, Registry of Deeds Registration No. 129283, north (56) degrees (05) minutes (00) seconds west, a distance of (24.358) metres;

THENCE running along the easterly limit of Clode Sound Road, (20) metres wide, north (26) degrees (56) minutes (58) seconds east, a distance of (2.272) metres;

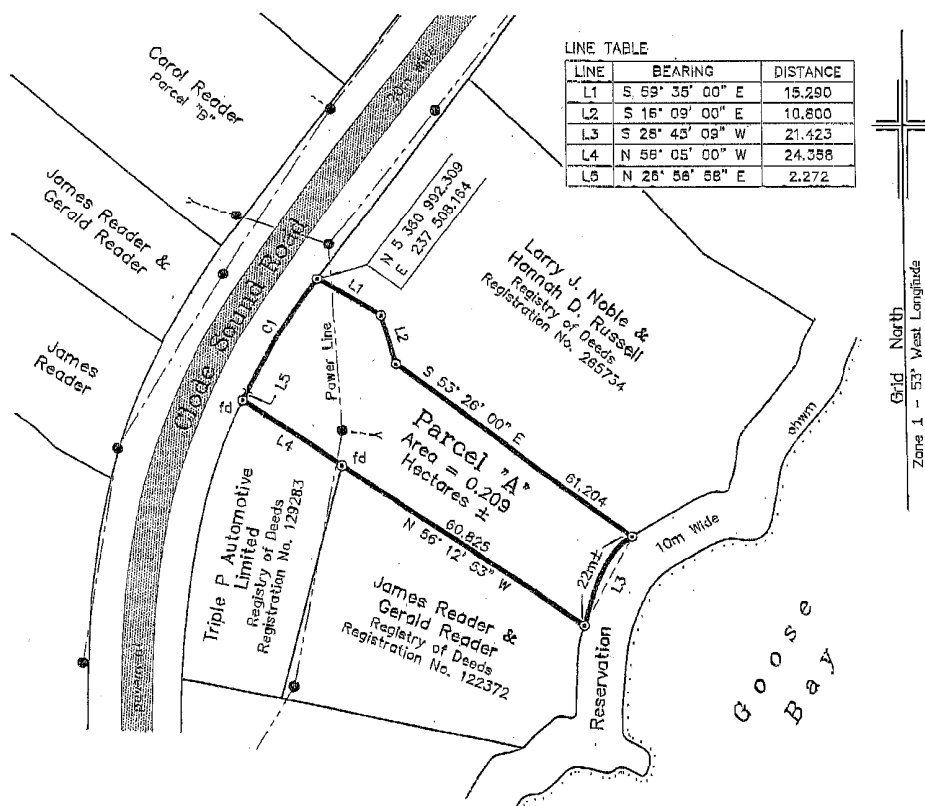
THENCE following the arc of a curve having a radius of (174.382) metres, for an arc distance of (28.104) metres, more or less, to the point of beginning, the said point being chord distant (28.073) metres as measured on a bearing of north (31) degrees (34) minutes (00) seconds east from the previously described point and, being more particularly shown and delineated on the attached plan;

CONTAINING an area of (0.209) Hectares, more or less;

ALL BEARINGS being referred to the meridian of (53) degrees west longitude of the Three Degree Transverse Mercator Projection. (NAD83).

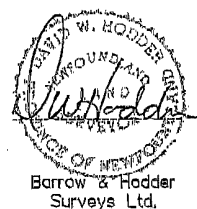
The above described piece or parcel of land being subject to overhead utility lines running through the said land, as shown on the attached plan.

SCHEDULE "B"



Note:

1. fd = Found
O = Iron Pin
⊙ = Capped Iron Pin
ohwm = Ordinary High Water Mark
2. Starting point derived from Real Time Kinematic GPS observations relative to Coordinate Monument No. 86G8050.
3. Copyright 2011, D. W. Hedder, NLS
Barrow & Hodder Surveys Ltd.



PLAN SHOWING LAND SURVEYED FOR
Carol Reader
Bloomfield, NL

Scale — 1 : 1000

Job No. 11-088-1

Date — 11 OCT 2011

SCHEDULE "C"

CAROL READER
Parcel "B"

BLOOMFIELD, NL
Job No. 11-088-2

ALL THAT piece or parcel of land situate at Bloomfield, in the Electoral District of Bonavista South, in the Province of Newfoundland and Labrador, abutted and bounded as follows, that is to say:

BEGINNING at a point, the said point having Grid Coordinates of North 5 360 999.499 metres and East 237 488.500 metres, as referenced to the meridian of (53) degrees west longitude of the Three Degree Transverse Mercator Projection (NAD83-1992 adjustment).

THENCE running by land described in a deed to James Reader and Gerald Reader, Registry of Deeds Registration No. 122372, north (49) degrees (31) minutes (27) seconds west, a distance of (422.390) metres;

THENCE running by Crown land, north (39) degrees (33) minutes (13) seconds east, a distance of (45.763) metres;

THENCE running by land described in a deed to Lori-Ann Holloway, Registry of Deeds Registration No. 339098,

south (49) degrees (15) minutes (24) seconds east, a distance of (373.111) metres;

THENCE running by land described in a deed to R. Boyd Reader, Registry of Deeds Roll 108, Frame 2531, occupied by Lori-Ann Holloway, south (36) degrees (05) minutes (22) seconds west, a distance of (4.617) metres;

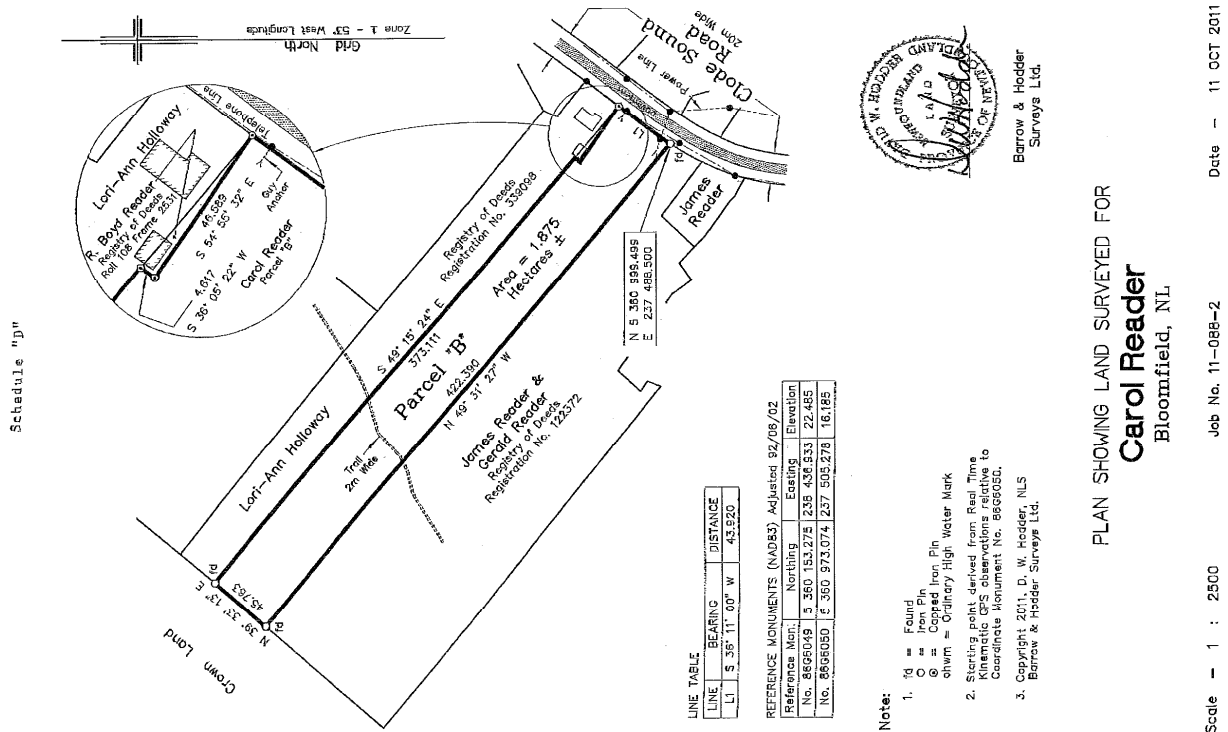
THENCE south (54) degrees (55) minutes (32) seconds east, a distance of (46.589) metres;

THENCE running along the westerly limit of Clode Sound Road, (20) metres wide, south (36) degrees (11) minutes (00) seconds west, a distance of (43.290) metres, more or less, to the point of beginning and being more particularly shown and delineated on the attached plan;

CONTAINING an area of (1.875) Hectares, more or less;

ALL BEARINGS being referred to the meridian of (53) degrees west longitude of the Three Degree Transverse Mercator Projection. (NAD83)

The above described piece or parcel of land being subject to a trail, (2) metres wide, extending through the said land, as shown on the attached plan.





THE NEWFOUNDLAND AND LABRADOR GAZETTE

PART II

SUBORDINATE LEGISLATION

FILED UNDER THE STATUTES AND SUBORDINATE LEGISLATION ACT

Vol. 87

ST. JOHN'S, FRIDAY, OCTOBER 19, 2012

No. 42

NEWFOUNDLAND AND LABRADOR REGULATIONS

NLR 83/12
NLR 84/12



**NEWFOUNDLAND AND LABRADOR
REGULATION 83/12**

*Repeal of Notice of Protected Watershed Area
under the
Water Resources Act*

(Filed October 16, 2012)

Under the authority of section 39 of the *Water Resources Act*, I
give the following notice.

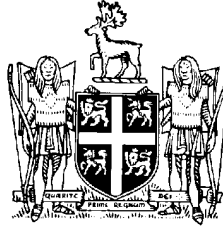
Dated at St. John's, October 2, 2012

Terry French
Minister of Environment and Conservation

NOTICE

The *Notice of Protected Watershed Area*, Consolidated Newfoundland and Labrador Regulation 674/96, is repealed.

©William E. Parsons, Queen's Printer



**NEWFOUNDLAND AND LABRADOR
REGULATION 84/12**

*Newfoundland and Labrador T'Railway Provincial
Park Proclamation (Amendment)
under the
Provincial Parks Act*

(Filed October 18, 2012)

Under the authority of subsection 4(2) of the *Provincial Parks Act*, I make the following Order.

Dated at St. John's, October 18, 2012.

Terry French
Minister of Environment and Conservation

ORDER

Analysis

1. Sch. Amdt.

NR 93/97
as amended

1. The *Newfoundland and Labrador T'Railway Provincial Park Proclamation* is amended by adding at the end of the Schedule the following:

The area described in this Schedule is decreased by removing the following parcel of land:

All that piece or parcel of land situate and being on the west side of Talcville Road, in the Town of Conception Bay South, in the Electoral

District of Conception Bay South, in the Province of Newfoundland and Labrador, and being bounded and abutted as follows, that is to say:

Beginning at a point on the said west side of Talcville Road, said point having coordinates of north 5,263,832.467 metres and east 307,755.340 metres of the Modified 3° Transverse Mercator Projection, NAD83, for the Province of Newfoundland and Labrador;

Running then along the said west side of Talcville Road south 34°27'57" east 5.841 metres;

And then south 29°28'15" east 1.868 metres;

Then running by Newfoundland and Labrador T'Railway Provincial Park south 65°12'09" west 45.595 metres;

Then running by Newfoundland and Labrador T'Railway Provincial Park north 32° 26' 51" west 7.688 metres;

Then running by land of Florizel Mercer and described on Roll 2624 at Frame 140 of the Registry of Deeds for the Province of Newfoundland and Labrador north 65°12'09" east 45.485 metres, more or less to the point of beginning;

Containing, in all, an area of 0.0347 hectares, more or less.

All bearings being referred to the meridian of 53° west longitude of the 3° Transverse Mercator Projection, NAD83.

©William E. Parsons, Queen's Printer

Index

PART I

Corporations Act – Notices	393
Judicature Act – Notice	400
Mechanics' Lien Act – Notices	402
Lands Act – Notice	402
Quieting of Titles Act – Notice	403
Urban and Rural Planning Act, 2000 – Notices	401

PART II

CONTINUING INDEX OF SUBORDINATE LEGISLATION

Title of Act and Subordinate Legislation made thereunder	CNLR or NL Reg.	Amendment	NL Gazette Date & Page No.
Water Resources Act			
Repeal of Notice of Protected Watershed Area	NLR 83/12	Repeals CNLR 674/96	Oct 19/12 p. 1127
Provincial Parks Act			
Newfoundland and Labrador T'Railway Provincial Park Proclamation (Amdt.)	NLR 84/12	NLR 93/97 (Amdt.) Sch. Amdt.	Oct 19/12 p. 1129

The Newfoundland and Labrador Gazette is published from the office of William E. Parsons, Queen's Printer.

Copy for publication must be received by **Friday, 4:30 p.m.**, seven days before publication date to ensure inclusion in next issue.

Advertisements must be submitted in either PDF format or as a MSWord file. When this is not possible, advertisements must be either typewritten or printed legibly, separate from covering letter. Number of insertions required must be stated and the names of all signing officers typewritten or printed.

Copy may be mailed to the address below, faxed to (709) 729-1900 or emailed to queensprinter@gov.nl.ca.

Advertising rates are available upon request. Subscription rate for *The Newfoundland and Labrador Gazette* is \$125.00 for 52 weeks plus applicable tax (\$131.25). Weekly issues of \$3.00 per copy, plus tax payable in advance.

All cheques, money orders, etc., should be made payable to THE NEWFOUNDLAND EXCHEQUER ACCOUNT and all correspondence should be addressed to: Office of the Queen's Printer, P. O. Box 8700, Ground Floor, East Block, Confederation Building, St. John's, NL A1B 4J6. Telephone (709) 729-3649. Fax: (709) 729-1900.

Web Site: <http://www.gs.gov.nl.ca/prINTER/index.html>

**Place your order by contacting:
Office of The Queen's Printer
Confederation Building, East Block
St. John's, NL A1B 4J6
Telephone: (709) 729-3649 Fax: (709) 729-1900
email: queensprinter@gov.nl.ca**

**Government Information Product
Publication Rate Mail**

G.S.T. # R107442683

All requests for Subscription and Legislation MUST be prepaid.