

No Subordinate Legislation
received at
time of printing



THE NEWFOUNDLAND AND LABRADOR GAZETTE

PART I

PUBLISHED BY AUTHORITY

Vol. 87 ST. JOHN'S, FRIDAY, NOVEMBER 9, 2012 No. 45

CORPORATIONS ACT

Corporations Act - Section 393

Local Incorporations

For the Month of: September 2012

Date	Number	Company Name			
2012-09-04	68341	68341 NEWFOUNDLAND & LABRADOR INC.	2012-09-10	68362	BMD Properties Inc.
2012-09-04	68343	DUANE EVANS TRUCKING LTD.	2012-09-12	68371	ATN SAND PRODUCTS LIMITED
2012-09-04	68338	P.P.W. Energy Services Ltd.	2012-09-12	68375	BIG SCORE RESOURCES LTD.
2012-09-04	68339	Dr. Lisa McGrath Professional Orthodontic Corporation	2012-09-12	68372	DISCOVERY CATERING LTD.
2012-09-04	68340	Charter Real Estate Service Ltd.	2012-09-12	68373	KEENAN HOLDINGS LTD.
2012-09-05	68345	ROWSSELL HOLDINGS INC.	2012-09-12	68370	MONTROSE HOLDINGS INC.
2012-09-05	68346	VOGUE ALTERNATIVE STRUCTURES LTD.	2012-09-12	68374	TPI-NEWFOUND TRAVEL INC.
2012-09-06	68355	68355 NEWFOUNDLAND & LABRADOR LIMITED	2012-09-12	68364	68364 NEWFOUNDLAND AND LABRADOR LIMITED
2012-09-06	68352	DREAMSCAPE PROPERTY LTD.	2012-09-12	68365	MCB Contracting Inc
2012-09-06	68353	INNU DAWN-WORKS INC.	2012-09-12	68367	Econ Inspections Ltd.
2012-09-06	68354	PITCHERS GAS & CONVENIENCE INC.	2012-09-13	68384	BRENDA'S CAR WASH INC.
2012-09-06	68351	DR. C. P. WHITE PHYSICIAN PMC INC.	2012-09-13	68389	LITTLE SALMONIER MARINE INC.
2012-09-07	68356	JEGS Enterprises Limited	2012-09-13	68382	NORTHERN LIGHTS ADVENTURES LTD.
2012-09-07	68357	Kean's Industrial Services Ltd.	2012-09-13	68376	68376 NEWFOUNDLAND & LABRADOR LTD.
2012-09-10	68368	68368 NEWFOUNDLAND & LABRADOR LTD.	2012-09-13	68377	Summit Development Inc.
2012-09-10	68369	STRICKLY BROBST HOLDINGS INC.	2012-09-13	68378	B.D. Hawe Distribution Ltd.
2012-09-10	68359	ELLISTON SLIPWAY COMMITTEE INC	2012-09-13	68379	68379 NEWFOUNDLAND & LABRADOR INC
2012-09-10	68361	GWC PROFESSIONAL SERVICES LTD.	2012-09-13	68380	68380 NEWFOUNDLAND & LABRADOR INC.
			2012-09-13	68381	68381 NEWFOUNDLAND AND LABRADOR INC.
			2012-09-14	68390	Coastal Safety Management Inc.
			2012-09-17	68401	68401 NEWFOUNDLAND AND LABRADOR INC.
			2012-09-17	68399	CASSELL CONTRACTING INC
			2012-09-17	68400	CYSGENIC CONSULTING INC.
			2012-09-17	68397	PETDEL CONSULTING SERVICES INC.
			2012-09-17	68396	PROACTIVE SAFETY SOLUTIONS INC.
			2012-09-17	68398	SAMANNA DEVELOPMENT CORP

THE NEWFOUNDLAND AND LABRADOR GAZETTE

November 9, 2012

2012-09-17	68391	HJL Holdings Inc.	2012-09-26	68471	GLENVIEW FARM INC.
2012-09-17	68392	GNA Properties Inc.	2012-09-26	68469	GRAY ENTERPRISE LTD.
2012-09-17	68393	Eastern Ventures Inc	2012-09-26	68474	WESTGATE MANAGEMENT CONSULTANTS INC.
2012-09-17	68394	S & N Mix Ltd.			
2012-09-17	68395	PLUMBING PLUS LTD.	2012-09-26	68464	S & B Contracting Services Ltd.
2012-09-18	68411	68411 NEWFOUNDLAND & LABRADOR INC.	2012-09-26	68465	AJL Enterprises Limited
2012-09-18	68413	SWEET SHOPPE LTD.	2012-09-26	68466	Morley Pack Investments Limited
2012-09-18	68402	Heritage Society of Milltown-Head Bay D'Espoir Inc.	2012-09-26	68467	Avant-Garde Appraisals Inc.
			2012-09-27	68484	FISHERMENS COMMITTEE OF RENCONTRE EAST, INC
2012-09-18	68403	SRT Holdings Ltd	2012-09-27	68486	NEWFOUNDLAND LASER INC.
2012-09-18	68405	BKG Yogurt Inc.	2012-09-27	68487	NORTHTECH ENGINEERING SERVICES INC.
2012-09-18	68406	Active Health Chiropractic Inc.			
2012-09-18	68407	Big Land Rentals Ltd.	2012-09-27	68483	RDR ELECTRICAL INC
2012-09-18	68408	RCTS Enterprises Inc.	2012-09-27	68473	Nexus Logistics Inc.
2012-09-18	68409	AES Enterprises Inc.	2012-09-27	68475	NESSA Group Inc.
2012-09-18	68410	DRMM Enterprises Inc.	2012-09-27	68476	68476 NEWFOUNDLAND & LABRADOR INCORPORATED
2012-09-19	68420	BEST IN TOWN HOLDINGS INC.			
2012-09-19	68416	4 D Realty Inc.	2012-09-27	68477	R & P TRANSPORT LTD.
2012-09-19	68417	68417 NEWFOUNDLAND & LABRADOR INC.	2012-09-27	68478	Northern Graphics Limited
2012-09-19	68418	68418 NEWFOUNDLAND & LABRADOR INC.	2012-09-27	68479	Trahey Technical Services Ltd.
			2012-09-27	68480	Modern Aggregates Limited
2012-09-19	68419	Prime Time Sales Ltd.	2012-09-27	68481	Modern Heavy Civil Limited
2012-09-20	68424	CANADA SPECIAL OLYMPICS 2016 GAMES ORGANIZING COMMITTEE INC.	2012-09-27	68482	Shawn Dawe Investments Limited
			2012-09-28	68495	DR. K. B. WILLIAMS (2012) PROFESSIONAL MEDICAL CORPORATION
2012-09-20	68426	KELSIE'S INN INCORPORATED			
2012-09-20	68422	Samco III Enterprises Canada Ltd	2012-09-28	68493	INGS INVESTMENTS LIMITED
2012-09-20	68423	SJM Contracting Ltd.	2012-09-28	68499	MAX POWELL HOLDINGS INC.
2012-09-21	68437	DR. NAGY BOLOUS PROFESSIONAL MEDICAL CORPORATION	2012-09-28	68494	SINGLETON INVESTMENTS LIMITED
			2012-09-28	68490	CCR Oilfield Services Limited
2012-09-21	68432	GAOLTA ENTERPRISES LTD.			
2012-09-21	68429	GLENWOOD HEIGHTS SALES LTD			
2012-09-21	68443	MEDIACRAFT ENTERPRISES LTD.			
2012-09-21	68430	NOVA YOGA INC.			
2012-09-24	68448	ADVANTEK ROOFING INC			
2012-09-24	68451	ALEXANDER BAY 50+ ASSOCIATION INC.			
2012-09-24	68444	BROOKING SEAFOODS INC.			
2012-09-24	68445	J.W. INSPECTION SERVICES INC.			
2012-09-24	68446	TO THE PUB ENTERPRISES LIMITED			
2012-09-24	68438	68438 NEWFOUNDLAND & LABRADOR LTD			
2012-09-24	68439	KIVIK Holdings Inc.			
2012-09-24	68440	WESTSHORE ARCTIC INC.			
2012-09-24	68441	Canyon Adventures Inc.			
2012-09-24	68442	HAWK ROOFING LTD			
2012-09-25	68461	CEDAR LANE SERVICES INC.			
2012-09-25	68463	DR. JARED BUTLER PROFESSIONAL MEDICAL CORPORATION			
2012-09-25	68462	DR. KAREN YOUNG PROFESSIONAL OPTOMETRIC CORPORATION			
2012-09-25	68460	HEVI WASH INC.			
2012-09-25	68456	ETM Oilfield Consulting Limited			
2012-09-25	68457	PRISM Project Solutions, Inc.			
2012-09-25	68458	CRAIG STRICKLAND'S FREIGHT SERVICES LTD			
2012-09-26	68468	68468 NEWFOUNDLAND AND LABRADOR INC.			
2012-09-26	68470	GEOSYSTEMS CONSULTING LTD.			
2012-09-26	68471	GLENVIEW FARM INC.			
2012-09-26	68469	GRAY ENTERPRISE LTD.			
2012-09-26	68474	WESTGATE MANAGEMENT CONSULTANTS INC.			
2012-09-26	68464	S & B Contracting Services Ltd.			
2012-09-26	68465	AJL Enterprises Limited			
2012-09-26	68466	Morley Pack Investments Limited			
2012-09-26	68467	Avant-Garde Appraisals Inc.			
2012-09-27	68484	FISHERMENS COMMITTEE OF RENCONTRE EAST, INC			
2012-09-27	68486	NEWFOUNDLAND LASER INC.			
2012-09-27	68487	NORTHTECH ENGINEERING SERVICES INC.			
2012-09-27	68483	RDR ELECTRICAL INC			
2012-09-27	68473	Nexus Logistics Inc.			
2012-09-27	68475	NESSA Group Inc.			
2012-09-27	68476	68476 NEWFOUNDLAND & LABRADOR INCORPORATED			
2012-09-27	68477	R & P TRANSPORT LTD.			
2012-09-27	68478	Northern Graphics Limited			
2012-09-27	68479	Trahey Technical Services Ltd.			
2012-09-27	68480	Modern Aggregates Limited			
2012-09-27	68481	Modern Heavy Civil Limited			
2012-09-27	68482	Shawn Dawe Investments Limited			
2012-09-28	68495	DR. K. B. WILLIAMS (2012) PROFESSIONAL MEDICAL CORPORATION			
2012-09-28	68493	INGS INVESTMENTS LIMITED			
2012-09-28	68499	MAX POWELL HOLDINGS INC.			
2012-09-28	68494	SINGLETON INVESTMENTS LIMITED			
2012-09-28	68490	CCR Oilfield Services Limited			
Total Incorporations: 117					
<i>Corporations Act - Section 331</i>					
Local Revivals					
For the Month of: September 2012					
Date	Number	Company Name	Date	Number	Company Name
2012-09-13	2402	McKINLAY MOTORS LIMITED	2012-09-13	2402	McKINLAY MOTORS LIMITED
2012-09-18	26886	CANADIAN CONSULTING CORPORATION	2012-09-18	26886	CANADIAN CONSULTING CORPORATION
2012-09-28	21675	D. A. TAKE-OUT LIMITED	2012-09-28	21675	D. A. TAKE-OUT LIMITED
Total Revivals: 3					
<i>Corporations Act - Section 286</i>					
Local Amendments					
For the Month of: September 2012					
Date	Number	Company Name	Date	Number	Company Name
2012-09-06	66016	GREENVIEW LANDSCAPING & SNOW REMOVAL INC.	2012-09-06	66016	GREENVIEW LANDSCAPING & SNOW REMOVAL INC.
2012-09-07	66408	DAVID DAWE HOLDINGS INC.	2012-09-07	66408	DAVID DAWE HOLDINGS INC.
2012-09-07	66409	HAROLD DAWE HOLDINGS INC.	2012-09-07	66409	HAROLD DAWE HOLDINGS INC.
2012-09-07	66410	SHAWN DAWE HOLDINGS INC.	2012-09-07	66410	SHAWN DAWE HOLDINGS INC.
2012-09-10	50827	DR. JOHN BOITSEFSKI DENTAL SERVICES LTD.	2012-09-10	50827	DR. JOHN BOITSEFSKI DENTAL SERVICES LTD.
2012-09-10	33804	Ocean Otter Limited	2012-09-10	33804	Ocean Otter Limited
2012-09-10	45833	VITOSHA ENTERPRISES LTD.	2012-09-10	45833	VITOSHA ENTERPRISES LTD.
2012-09-13	48462	OFFSHORE RIG MOVERS INTERNATIONAL NEWFOUNDLAND LTD.	2012-09-13	48462	OFFSHORE RIG MOVERS INTERNATIONAL NEWFOUNDLAND LTD.
2012-09-13	38248	St. John's R/C Flyers Inc	2012-09-13	38248	St. John's R/C Flyers Inc
2012-09-13	38248	St. John's R/C Flyers Inc	2012-09-13	38248	St. John's R/C Flyers Inc
2012-09-13	64464	TAYLOR ESTATES MANAGEMENT CORPORATION	2012-09-13	64464	TAYLOR ESTATES MANAGEMENT CORPORATION

THE NEWFOUNDLAND AND LABRADOR GAZETTE
November 9, 2012

2012-09-13	63091	TODD SIMMS CONTRACTING LTD.
2012-09-18	55240	ARGOSY INTERNATIONAL MARINE SERVICES (CANADA) LTD
2012-09-18	67063	BJH ENTERPRISES INC.
2012-09-18	23740	Delaney Holdings Limited
2012-09-18	53442	Komatik Support Services Inc.
2012-09-18	65511	Layden's Investments Inc.
2012-09-18	30739	NEI Association Inc.
2012-09-19	67849	DR. EHAB SAAD AND DR. SHERIENE MALAK DOSS PROFESSIONAL MEDICAL CORPORATION
2012-09-19	47765	EDISON EXCAVATION LTD.
2012-09-19	50237	INDIAN BAY SNOWMOBILE AND ATV CLUB INC.
2012-09-20	47348	Focus Plus Inc.
2012-09-20	57269	JIBUG HOLDINGS INC.
2012-09-20	68395	PLUMBING PLUS LTD.
2012-09-20	16499	ST. JOHN COUNCIL FOR NEWFOUNDLAND AND LABRADOR INC.
2012-09-20	47351	Sunshine Investments Inc.
2012-09-20	67204	SUNSHINE SAFETY INC
2012-09-21	47659	D & L LOUNGE LTD.
2012-09-21	29860	HOLDEN VENTURES INC.
2012-09-21	19782	Holden's Transport Limited
2012-09-21	51055	RODRIGUES ESTATE DEVELOPMENT INC.
2012-09-21	40998	St. Patrick's Mercy Home Foundation Incorporated
2012-09-24	64776	ATLANTIC INDUSTRIAL CAD INC.
2012-09-24	65480	BACCALIEU HORIZON DEVELOPMENT CORPORATION
2012-09-24	63024	CHRIS COLLETT HOMES LTD.
2012-09-24	9973	Nordic Construction Limited
2012-09-25	61767	ONI INVESTMENTS INC.
2012-09-25	68000	RELATIVE ENDEAVOURS INCORPORATED
2012-09-26	12358	PALMER AND CURRIE LIMITED
2012-09-27	67946	BOREAL CONTRACTING INC
2012-09-27	68351	DR. C. P. WHITE PHYSICIAN PMC INC.
2012-09-27	16952	St. Alban's Drugs Limited
2012-09-27	7M	St. James Loyal Orange Lodge No. 177
2012-09-28	57017	57017 NEWFOUNDLAND AND LABRADOR LIMITED
2012-09-28	60326	ADDETIA INVESTMENTS LIMITED
2012-09-28	67215	CENTER CITY CAPITAL CORPORATION
2012-09-28	51989	MODERN SOIL TREATMENT LIMITED
2012-09-28	66876	NITASSINAN/NUNATSUAK SUPPLIES INC.

Total Amendments: 48

Corporations Act - Section 335

Local Dissolutions

For the Month of: September 2012

Date	Number	Company Name
2012-09-04	59086	A&J TRANSMISSION ENTERPRISES LIMITED
2012-09-05	35079	Natural Products International Inc.
2012-09-05	34360	W & S Enterprises Ltd.
2012-09-06	58456	Advanced Refrigeration & Energy Systems Inc

2012-09-06	62589	ALDEN & SON ENTERPRISES LIMITED
2012-09-07	67653	H & B MARINE COURIER INC.
2012-09-07	18228	Nor-West Construction Company Limited
2012-09-10	49934	SHEPPARD CAPITAL GROUP INC.
2012-09-12	62434	HOLWELLS ELECTRICAL & CONTRACTING LTD.
2012-09-13	33823	S & L Contracting Ltd.
2012-09-17	50497	DOBCO Enterprises Ltd.
2012-09-17	59352	GIOVANNI YACHTS INC.
2012-09-17	64564	J & L CONVENIENCE LTD.
2012-09-17	59081	ROGER NOSEWORTHY FINANCIAL INC.
2012-09-17	62651	SJL PROPERTY MANAGEMENT INC.
2012-09-19	43715	JIM BYRD CONSULTING INC.
2012-09-19	64738	KITCHEN KANDLES INC
2012-09-20	30490	D & B Transportation Ltd.
2012-09-20	52470	ORION SOLUTIONS NL INC.
2012-09-21	66115	Double Nickel Holdings Limited
2012-09-24	58046	SEA-JEN CONSTRUCTION LIMITED
2012-09-25	61130	Broad Cove Convenience Ltd.
2012-09-25	61115	PL ELECTRICAL LTD.
2012-09-26	56973	EASTERN MINK FARM INC.
2012-09-26	57498	Gizmojammin Entertainment Inc.
2012-09-26	52597	MERCOR TRADING INC.
2012-09-26	27300	Sure Farm Limited
2012-09-27	34144	Carlyle Investments, Inc.
2012-09-27	30798	NIGHT TIME COMMUNICATIONS, INC.
2012-09-28	59374	M & D QUICK STOP LIMITED

Total Dissolutions: 30

Corporations Act - Section 299

Local Discontinuances

For the Month of: September 2012

Date	Number	Company Name
2012-09-24	55282	UNIVERSAL WASTE DISPOSAL INC.

Total Discontinuances: 1

Corporations Act - Section 294

Local Amalgamations

For the Month of: September 2012

Date	Number	Company Name
2012-09-01	68334	VETALON HOLDINGS LTD.
From:	6127	MARDA HOLDINGS LIMITED
	18937	The Vet Centre Limited
	33078	VETALON HOLDINGS LTD.
2012-09-07	68358	WEST COAST SAND & GRAVEL LIMITED
From:	64818	Steve's Excavating Ltd.
	24550	West Coast Sand & Gravel Limited
2012-09-13	68385	D.A.A. ENTERPRISES LIMITED
From:	68159	68159 NEWFOUNDLAND & LABRADOR LIMITED
	54150	D.A.A. Enterprises Limited
2012-09-30	68496	DION TEMPLE HOLDINGS LIMITED
From:	47911	DION TEMPLE HOLDINGS LTD.
	34843	P J P Holdings Ltd.

THE NEWFOUNDLAND AND LABRADOR GAZETTE

November 9, 2012

2012-09-30 68491 M & G ENTERPRISES LTD.
From: 62131 M & G Enterprises Ltd.
34584 TAYLORS STORE (1995) LIMITED

66876 NITASSINAN/NUNATSUAK
SUPPLIES INC.
2012-09-28 From: Nitassinan Supplies Inc.

Total Amalgamations: 5

Total Name Changes: 13

Corporations Act - Section 286

Local Name Changes

For the Month of: September 2012

Number		Company Name
66016		GREENVIEW LANDSCAPING & SNOW REMOVAL INC.
2012-09-06	From:	BAYFIELD SAFETY SERVICES INC.
66408		DAVID DAWE HOLDINGS INC.
2012-09-07	From:	66408 NEWFOUNDLAND & LABRADOR INC.
66409		HAROLD DAWE HOLDINGS INC.
2012-09-07	From:	66409 NEWFOUNDLAND & LABRADOR INC.
66410		SHAWN DAWE HOLDINGS INC.
2012-09-07	From:	66410 NEWFOUNDLAND & LABRADOR INC.
68395		PLUMBING PLUS LTD.
2012-09-20	From:	68395 NEWFOUNDLAND & LABRADOR CORP
63024		CHRIS COLLETT HOMES LTD.
2012-09-24	From:	Chris Collett Construction Ltd
61767		ONI INVESTMENTS INC.
2012-09-25	From:	61767 NEWFOUNDLAND & LABRADOR INC.
68351		DR. C. P. WHITE PHYSICIAN PMC INC.
2012-09-27	From:	Dr. C.P. White Physician Inc.
57017		57017 NEWFOUNDLAND AND LABRADOR LIMITED
2012-09-28	From:	DR. K. BRETT WILLIAMS PROFESSIONAL MEDICAL CORPORATION
60326		ADDETIA INVESTMENTS LIMITED
2012-09-28	From:	DR. AMIN ADDETIA (2009) PROFESSIONAL MEDICAL CORPORATION
67215		CENTER CITY CAPITAL CORPORATION
2012-09-28	From:	67215 NEWFOUNDLAND & LABRADOR CORP
51989		MODERN SOIL TREATMENT LIMITED
2012-09-28	From:	Modern Soil Treatment Limited

Corporations Act - Section 443

Extra-Provincial Registrations

For the Month of: September 2012

Date	Number	Company Name
2012-09-04	68344	HAWORTH, LTD.
2012-09-04	68342	OXFAM-CANADA
2012-09-05	68348	C. L. MURRAY ENTERPRISES LTD.
2012-09-05	68347	DAWN-WORKS INC.
2012-09-05	68349	EQUIGENESIS CORPORATION
2012-09-05	68350	P.E.I. BAG CO. LTD.
2012-09-07	68360	BITON LIMITED
2012-09-10	68366	ATLANTICA MECHANICAL (NL) LIMITED
2012-09-10	68363	MALLINCKRODT CANADA ULC
2012-09-13	68387	A.X.C. CONSTRUCTION INC.
2012-09-13	68388	CANATEC ASSOCIATES INTERNATIONAL LTD.
2012-09-13	68386	INCAPITAL CANADA ULC
2012-09-13	68383	SPECIALIZED PROPERTY EVALUATION CONTROL SERVICES LIMITED
2012-09-18	68414	ABORIGINAL INSURANCE SERVICES, INC.
2012-09-18	68415	ULO SYSTEMS LLC (USA)
2012-09-19	68421	665902 NEW BRUNSWICK INC.
2012-09-20	68427	8153086 CANADA INC.
2012-09-20	68425	GAN EUROCOURTAGE
2012-09-21	68434	COINSTAR AUTOMATED RETAIL CANADA INC.
2012-09-21	68433	FRANCIS J. RYAN CONSTRUCTION COMPANY, ULC
2012-09-21	68436	HARBOUR AUTHORITY OF FLATROCK
2012-09-21	68431	MATRIX 2012 ENHANCED SHORT DURATION NATIONAL AND QUEBEC FLOW THROUGH MANAGEMENT LIMITED
2012-09-21	68435	SPRINT INTERNATIONAL COMMUNICATIONS CANADA ULC
2012-09-24	68450	0904442 B.C. LTD.
2012-09-24	68449	CANADA NDE TECHNICAL SERVICES LTD.
2012-09-24	68459	CANADIAN FOODSERVICE PURCHASING PROGRAM INC.
2012-09-24	68455	GILEAD ORTHOPAEDICS INC.
2012-09-24	68453	HARBOUR AUTHORITY OF PETITE FORTE
2012-09-26	68472	FNA FERTILIZER GP INC.
2012-09-27	68488	A.R.C. FINANCIAL GROUP LTD.
2012-09-27	68485	BRISTOW CANADIAN REAL ESTATE COMPANY INC.
2012-09-27	68489	HARBOUR AUTHORITY OF HEART'S DELIGHT-ISLINGTON

THE NEWFOUNDLAND AND LABRADOR GAZETTE

November 9, 2012

2012-09-28 68497 MAPLE LEAF 2012-II ENERGY
INCOME
MANAGEMENT CORP.

Total Registrations: 33

Corporations Act - Section 451
Extra-Provincial Name Changes
For the Month of: September 2012

Number	Company Name
60857	CATAMARAN CORPORATION
2012-09-21 From:	SXC HEALTH SOLUTIONS CORP.
62495	FREEWAY SALES LIMITED
2012-09-25 From:	FREEWAY FORD SALES LIMITED
59520	AGRICULTURAL CREDIT CORPORATION
2012-09-27 From:	ACC FARMERS' FINANCIAL

Total Name Changes: 3

Corporations Act - Section 294
Extra-Provincial Registrations for Amalgamation
For the Month of: September 2012

Date	Number	Company Name
2012-09-17	68404	ARMSTRONG WORLD INDUSTRIES CANADA LTD.
From:	1949D	LES INDUSTRIES MONDIALES ARMSTRONG CANADA LTEE ARMSTRONG WORLD INDUSTRIES CANADA LTD.
		LES INDUSTRIES MONDIALES ARMSTRONG CANADA LTEE
2012-09-18	68412	RETURN ON INNOVATION ADVISORS LTD.
From:	53986	RETURN ON INNOVATION CAPITAL LTD.
	53647	RETURN ON INNOVATION MANAGEMENT LTD.
2012-09-20	68428	CAP-EX VENTURES LTD.
From:	64519	SCHEFFERVILLE IRON ORE EXPLORATION CORP.
2012-09-24	68454	FLINT FIELD SERVICES LTD.
From:	67105	FLINT FIELD SERVICES LTD.
2012-09-24	68447	IMPERIAL PARKING CANADA CORPORATION
From:	56595	IMPERIAL PARKING CANADA CORPORATION
2012-09-24	68452	TOWN SHOES LIMITED
From:	6302F	TOWN SHOES LIMITED

2012-09-28 68492 EMC CORPORATION OF CANADA
From: 55167 EMC CORPORATION OF CANADA

Total Registrations for Amalgamation: 7

SERVICE NL
Dean Doyle, Registrar of Companies

Nov 9

MINERAL ACT

NOTICE

Published in accordance with section 62 of CNLR 1143/96
under the *Mineral Act*, cM-12, RSNL 1990 as amended.

Mineral rights to the following mineral licenses have
reverted to the Crown:

A portion of license	019523M
Held by	Cornerstone Resources Inc.
Situate near	Conne River, Southern NL
On map sheet	01M/13, 02D/04
more particularly described in an application on file at Department of Natural Resources	

Mineral License	013880M
Held by	Ryan, Kevin
Situate near	Lunch Pond, Burin Peninsula
On map sheet	01M/03

Mineral License	015194M
Held by	Fraser, Dean
Situate near	Roberts Arm, Central NL
On map sheet	02E/12

Mineral License	015259M
Held by	Noel, E. Michele
Situate near	Northwest Gander River, Central NL
On map sheet	02D/11

A portion of license	015650M
Held by	1512513 Alberta Ltd.
Situate near	Main River Area, Western NL
On map sheet	12H/10, 12H/11
more particularly described in an application on file at Department of Natural Resources	

A portion of license	017801M
Held by	1512513 Alberta Ltd.
Situate near	Main River Area, Western NL
On map sheet	12H/11, 12H/14
more particularly described in an application on file at Department of Natural Resources	

THE NEWFOUNDLAND AND LABRADOR GAZETTE

November 9, 2012

Mineral License Held by Situates near On map sheet	016340M Quinlan, Mervin Micmac Lake, Baie Verte Peninsula 12H/09	Mineral License Held by Situates near On map sheet	018976M Altius Resources Inc. Pangertok Inlet 14L/06
A portion of license Held by Situates near On map sheet more particularly described in an application on file at Department of Natural Resources	016545M Cornerstone Resources Inc. Bessie Lake 13L/01	Mineral License Held by Situates near On map sheet	018980M Altius Resources Inc. North River 14E/10
Mineral License Held by Situates near On map sheet	017818M Noel, E. Michele Marystown Area, Burin Peninsula 01M/03	Mineral License Held by Situates near On map sheet	018981M Altius Resources Inc. Wheeler Mountain 14E/09, 14E/16
Mineral License Held by Situates near On map sheet	017823M Hicks, Darrin Shellbird Island, Central NL 02E/12, 12H/09	Mineral License Held by Situates near On map sheet	018982M Altius Resources Inc. Jensen Inlet 14L/01
Mineral License Held by Situates near On map sheet	017834M Martin, John Crooks Lake Area 13B/11	Mineral License Held by Situates near On map sheet	018983M Altius Resources Inc. North River 14E/10
Mineral License Held by Situates near On map sheet	017842M Cache Minerals Inc. Grand Le Pierre, Fortune Bay 01M/10, 01M/15	Mineral License Held by Situates near On map sheet	018984M Altius Resources Inc. Wheeler Mountain 14E/09
Mineral License Held by Situates near On map sheet	017864M Shabogamo Mining & Exploration Limited Lac Montanon 23G/02	Mineral License Held by Situates near On map sheet	018985M Altius Resources Inc. Finger Hill 14E/16
A portion of license Held by Situates near On map sheet more particularly described in an application on file at Department of Natural Resources	019441M Commander Resources Ltd. Adlatok River 13N/05	Mineral License Held by Situates near On map sheet	018986M Altius Resources Inc. Wheeler Mountain 14E/09
Mineral License Held by Situates near On map sheet	018971M Altius Resources Inc. Napaktok Bay Area 14E/15	Mineral License Held by Situates near On map sheet	018987M Altius Resources Inc. Mugford Bay 14E/16
Mineral License Held by Situates near On map sheet	018973M Altius Resources Inc. Napaktok Bay Area 14E/15	Mineral License Held by Situates near On map sheet	018988M Altius Resources Inc. Ferdinand Inlet 14L/01
Mineral License Held by Situates near On map sheet	018974M Altius Resources Inc. Pangertok Inlet 14L/06	Mineral License Held by Situates near On map sheet	018989M Altius Resources Inc. Mugford Bay 14E/16
		Mineral License Held by Situates near On map sheet	018990M Altius Resources Inc. Napaktok Bay Area 14E/15

Mineral License 019159M
Held by BrownCo Investments Inc.
Situate near Northwest Brook, Eastern NL
On map sheet 02C/04, 02D/01

Natural Resources, will be open for staking after the hour of 9:00 a.m. on the 32nd clear day after the date of this publication.

DEPARTMENT OF NATURAL RESOURCES
JIM HINCHEY, P.Geo
Manager - Mineral Rights

Mineral License 019161M
Held by Celtic Minerals Ltd
Situate near Reid Brook
On map sheet 14D/01, 14D/08

File #'s 774: 4067, 4685, 8701, 9584, 9585, 9757, 9761, 9817, 9818, 9822

Mineral License 019164M
Held by Murphy, Lewis
Situate near Great Gull Lake, Central NL
On map sheet 12H/01

775: 0017, 0019, 0312, 0437, 1236, 1241, 1250, 1258, 1281, 1378, 2270, 2272, 2273, 2275, 2279, 2280, 2281, 2282, 2283, 2284, 2285, 2286, 2287, 2288, 2289, 2421, 2423, 2427, 2430, 2440, 2444, 2448, 2449, 2451, 2470, 2471.

Mineral License 019167M
Held by 10565 Nfld Inc
Situate near Strange Lake, West of Nain
On map sheet 24A/08

Nov 9

CITY OF ST. JOHN'S ACT



Mineral License 019177M
Held by Parby, Frederick
Situate near Cat Bay, Eastern NL
On map sheet 02D/16

Mineral License 019181M
Held by Courtney, Stephen
Situate near Porterville, Central NL
On map sheet 02E/06

ST. JOHN'S MUNICIPAL COUNCIL

NOTICE ST. JOHN'S COMMERCIAL PROPERTY TAX BY-LAW

Mineral License 019185M
Held by Quinlan, Andrew
Situate near Menihek Lake Area
On map sheet 23J/02

TAKE NOTICE that the ST. JOHNS MUNICIPAL COUNCIL has enacted the St. John's Commercial Property Tax By-Law.

Mineral License 019186M
Held by Lambert, Bert
Situate near Wild Cove, North Twillingate Island
On map sheet 02E/10

The said By-Law was passed by Council on the 29th day of October, 2012, so as to set out the provisions relating to vacancy relief under the new tax blending regime.

Mineral License 019188M
Held by Mercer, George J.
Situate near Exploits River, Central NL
On map sheet 12A/16

All persons are hereby required to take notice that any person who wishes to view such Regulations may view same at the Office of the City Solicitor of the ST. JOHN'S MUNICIPAL COUNCIL at City Hall, and that any person who wishes to obtain a copy thereof may obtain it at the said office upon the payment of a reasonable charge as established by the ST. JOHN'S MUNICIPAL COUNCIL for such copy.

Mineral License 019208M
Held by Bayswater Ventures Corp.
Situate near Shapio Lake East Area
On map sheet 13K/14

Dated this 29th day of October, 2012.

Mineral License 019209M
Held by Bayswater Ventures Corp.
Situate near Shapio Lake East Area
On map sheet 13K/14

CITY OF ST. JOHN'S
Neil Martin, City Clerk

The lands covered by this notice except for the lands within Exempt Mineral Lands, the Exempt Mineral Lands being described in CNLR 1143/96 and NLR 71/98, 104/98, 97/00, 36/01, 31/04, 78/06, 8/08 and 28/09 and outlined on 1:50 000 scale digital maps maintained by the Department of

Nov 9

**ST. JOHN'S MUNICIPAL COUNCIL
NOTICE
ST. JOHN'S DOWNTOWN BUSINESS
IMPROVEMENT AREA
(AMENDMENT NO. 1, 2012) BY-LAW**

TAKE NOTICE that the ST. JOHN'S MUNICIPAL COUNCIL has enacted the St. John's Downtown Business Improvement Area (Amendment No. 1, 2012) By-Law.

The said By-Law was passed by Council on the 29th day of October, 2012, so as to remove references to business occupancy tax.

All persons are hereby required to take notice that any person who wishes to view such Regulations may view same at the Office of the City Solicitor of the ST. JOHN'S MUNICIPAL COUNCIL at City Hall, and that any person who wishes to obtain a copy thereof may obtain it at the said office upon the payment of a reasonable charge as established by the St. John's Municipal Council for such copy.

Dated this 29th day of October, 2012.

CITY OF ST. JOHN'S
Neil Martin, City Clerk

Nov 9

**ST. JOHN'S MUNICIPAL COUNCIL
NOTICE
ST. JOHN'S REAL PROPERTY
TAX EXEMPTION BY-LAW**

TAKE NOTICE that the ST. JOHN'S MUNICIPAL COUNCIL has enacted the St. John's Real Property Tax Exemption By-Law.

The said By-Law was passed by Council on the 29th day of October, 2012, which will have the effect of codifying those properties which are exempt from real property tax as per the provisions of the *City of St. John's Municipal Taxation Act*.

All persons are hereby required to take notice that any person who wishes to view such Regulations may view same at the Office of the City Solicitor of the ST. JOHN'S MUNICIPAL COUNCIL at City Hall, and that any person who wishes to obtain a copy thereof may obtain it at the said office upon the payment of a reasonable charge as established by the ST. JOHN'S MUNICIPAL COUNCIL for such copy.

Dated this 29th day of October, 2012.

CITY OF ST. JOHN'S
Neil Martin - City Clerk

Nov 9

URBAN AND RURAL PLANNING ACT, 2000

**NOTICE OF REGISTRATION
MOUNT PEARL DEVELOPMENT
REGULATIONS 2010
AMENDMENT NO. 9, 2012
(MOBILITY IMPAIRED
PARKING SPACES AMENDMENT)**

TAKE NOTICE that the CITY OF MOUNT PEARL Development Regulations 2010 Amendment No. 9, 2012, adopted by Council on the 2nd day of October, 2012, has been registered by the Minister of Municipal Affairs.

In general terms, the purpose of Development Regulations Amendment No. 9, 2012 is to clarify the requirement for designated mobility impaired parking spaces.

The Development Regulations Amendment No. 9, 2012, comes into effect on the day that this notice is published in *The Newfoundland and Labrador Gazette*.

Anyone who wishes to inspect a copy of this Amendment may do so at the Mount Pearl City Hall, 3 Centennial Street, during normal working hours.

CITY OF MOUNT PEARL
Michele Peach, Chief Administrative Officer

Nov 9

**NOTICE OF REGISTRATION
TOWN OF ST. JACQUE'S - COOMB'S COVE
MUNICIPAL PLAN 2010
AND
DEVELOPMENT REGULATIONS 2010**

TAKE NOTICE that the TOWN OF ST. JACQUE'S - COOMB'S COVE Municipal Plan 2010 and Development Regulations 2010, adopted on the 27th day of March, 2012 and approved on the 14th day of May, 2012, have been registered by the Minister of Municipal Affairs.

The St. Jacques - Coomb's Cove Municipal Plan 2010 and Development Regulations 2010 come into effect on the day that this notice is published in *The Newfoundland and Labrador Gazette*. Anyone who wishes to inspect a copy of the St. Jacques - Coomb's Cove Municipal Plan 2010 and Development Regulations 2010 may do so at the Town Office, St. Jacques - Coomb's Cove during normal working hours.

TOWN OF ST. JACQUE'S - COOMB'S COVE
Joan Margaret Sheppard, Town Clerk

Nov 9

**NOTICE OF REGISTRATION
TOWN OF WITLESS BAY
MUNICIPAL PLAN AMENDMENT NO. 12, 2012,
AND
DEVELOPMENT REGULATIONS AMENDMENT
NO. 13, 2012**

TAKE NOTICE that the TOWN OF WITLESS BAY Municipal Plan Amendment No. 12, 2012, and Development Regulations Amendment No. 13, 2012, as adopted by Council on the 14th day of August, 2012, has been registered by the Minister of Municipal Affairs.

In general terms, Municipal Plan Amendment No. 12, 2012, will re-designate an area of land on the east side of the Southern Shore Highway, Route 10, from Public Assembly to Commercial.

Development Regulations Amendment No. 13, 2012, will re-zone the same area of land from Public to Commercial Local.

The TOWN OF WITLESS BAY Municipal Plan Amendment No. 12, 2012, and Development Regulations Amendment No. 13, 2012, comes into effect on the day that this notice is published in *The Newfoundland and Labrador Gazette*.

Anyone who wishes to inspect a copy of the TOWN OF WITLESS BAY Municipal Plan Amendment No. 12, 2012, and Development Regulations Amendment No. 13, 2012, may do so at the Town Office, Witless Bay during normal working hours.

TOWN OF WITLESS BAY
Geraldine Caul, Town Clerk

Nov 9

MECHANICS' LIEN ACT

**NOTICE OF INTENTION TO RELEASE
MECHANICS' LIEN HOLDBACK
PURSUANT TO SECTION 12
OF THE *MECHANICS' LIEN ACT*,
RSNL1990 cM-3 (THE "ACT")**

PURSUANT TO section 12 of the Act, and in relation to a contract A4VI-10-CG0028 entered into between VALE NEWFOUNDLAND AND LABRADOR LIMITED and Capital Ready Mix Limited which contract is dated as of February 8th, 2010, notice is hereby given of the intention of VALE NEWFOUNDLAND AND LABRADOR LIMITED, to the release of mechanics' lien holdback funds 30 days following the date of this notice.

Dated at St. John's, NL, this 10th day of October, 2012.

FLUOR CANADA LIMITED
Troy Gilson, Project Contracts Manager
(acting as Agent for Vale NL Limited)

Oct 19, 26, Nov 2 & 9

**NOTICE OF INTENTION TO RELEASE
MECHANICS' LIEN HOLDBACK
PURSUANT TO SECTION 12
OF THE *MECHANICS' LIEN ACT*,
RSNL1990 cM-3 (THE "ACT")**

PURSUANT TO section 12 of the Act, and in relation to a contract A4VI-10-CB0007 entered into between VALE NEWFOUNDLAND AND LABRADOR LIMITED and H.J. O'Connell Limited which contract is dated as of February 3rd, 2010, notice is hereby given of the intention of VALE NEWFOUNDLAND AND LABRADOR LIMITED, to the release of mechanics' lien holdback funds 30 days following the date of this notice.

Dated at St. John's, NL, this 12th day of October, 2012.

FLUOR CANADA LIMITED
Troy Gilson, Project Contracts Manager
(acting as Agent for Vale NL Limited)

Oct 19, 26, Nov 2 & 9

**NOTICE OF INTENTION TO RELEASE
MECHANICS' LIEN HOLDBACK
PURSUANT TO SECTION 12
OF THE *MECHANICS' LIEN ACT*,
RSNL1990 cM-3 (THE "ACT")**

PURSUANT TO section 12 of the Act, and in relation to a contract entered into between VALE INCO NEWFOUNDLAND AND LABRADOR LIMITED, now known as VALE NEWFOUNDLAND AND LABRADOR LIMITED ("Company") and DFB Driver Inc ("Contractor") which contract is dated as of August 3rd, 2010, notice is hereby given of the intention of Company to release of mechanics' lien holdback funds 30 days following the date of this notice.

Dated at St. John's, NL, this 29th day of October 2012.

FLUOR CANADA LIMITED
Geneva Davey, Project Contracts Manager
(As Company's Representative)

Nov 9, 16, 23 & 30

QUIETING OF TITLES ACT

**2012 05G 0162
IN THE SUPREME COURT OF
NEWFOUNDLAND AND LABRADOR
TRIAL DIVISION (General)**

NOTICE OF APPLICATION under the *Quieting of Titles Act*, cQ-3, of the RSNL 1990.

Notice is hereby given to all parties that RUBY KEEL, of the Town of Clarenville, in the District of Trinity North, in the Province of Newfoundland and Labrador, has applied to the Supreme Court, Trial Division, Gander, to have title to all that piece or parcel of property situate at Clarenville, in the Province of Newfoundland and Labrador, which property is more particularly described in Schedule "A" hereto annexed and shown in Schedule "B" hereto annexed.

ALL BEARINGS aforementioned, for which RUBY KEEL claims to be the owner investigated and for a Declaration that she is the absolute owner in fee simple in possession and the said RUBY KEEL has been ordered to public Notice of Application as required by the above named Act.

All persons having title adverse to the said title claimed by the said RUBY KEEL shall file in the Registry of the Supreme Court of Newfoundland and Labrador, Trial Division, Gander, particulars of such adverse claim and serve the same together with an Affidavit verifying same on the undersigned Solicitors for the Petitioner on or before the 30th day of November, 2012, after which date no party having any claim shall be permitted to file the same or to be heard except by special leave of the Court and subject to such conditions as the Court may deem just.

All such adverse claims shall be investigated then in such manner as the Supreme Court of Newfoundland and Labrador, Trial Division, Gander, may direct.

DATED AT Clarenville, in the Province of Newfoundland and Labrador, this 8th day of August, 2012.

MILLS PITTMAN LAW OFFICES
Solicitors for the Applicant
PER: Corwin Mills, Q.C.

ADDRESS FOR SERVICE:
111 Manitoba Drive
Suite 201
Clarenville, NL A5A 1K2

Tel: (709) 466-2641
Fax: (709) 466-7109

SCHEDULE "A"

Estate of the Late
NORMAN KEEL

Clarenville, NL

ALL THAT piece or parcel of land situate and being in the Town of Clarenville, in the Electoral District of Terra Nova abutted and bounded as follows:

THAT IS TO SAY: Beginning at a point, the said point being on the northern limit of Pleasant Street, the said point having coordinates (N 5 335 838.65) metres and (E 232-618.92) metres of the Three Degree Modified Transverse Mercator Projection (NAD-83) for the Province of Newfoundland and Labrador;

THENCE along the said northern limit of Pleasant Street north seventy-one degrees thirty minutes fifty-five seconds west (N 71-30-55 W) seventeen decimal three three (17.33) metres, north fifty-nine degrees twenty-eight minutes zero five seconds west (N 59-28-05 W) thirty-two decimal six seven (32.67) metres, north twenty-nine degrees fifty-eight minutes thirty seconds east (N 29-58-30 E) two decimal zero zero (2.00) metres;

THENCE along the said northern limit of Pleasant Street along the arc of a curve having a radius of sixty decimal eight three (60.83) metres to a point, the said point being distant twenty-three decimal three three (23.33) metres as measured on a bearing of north forty-three degrees forty-five minutes forty seconds west (N 43-45-40 W) from the last mentioned point;

THENCE by property of now or formerly Newfoundland Conference of the United Church of Canada (vol. 130 - fol. 22) north fifteen degrees twenty-two minutes ten seconds west (N 15-22-10 W) thirty-four decimal one six (34.16) metres, north eighty-eight degrees thirteen minutes forty-five seconds east (N 88-13-45 E) twenty-one decimal eight five (21.85) metres;

THENCE by property of Eastern School District (vol. 158 fol. 87) south thirty-six degrees forty-six minutes twenty seconds east (S 36-46-20 E) twenty-two decimal four one (22.41) metres, south fifty-eight degrees forty-two minutes twenty seconds east (S 58-42-20 E) seven decimal five three (7.53) metres;

THENCE by property of Kenneth Strong and by property of Fewer Holdings Ltd., south fifty-seven degrees zero zero minutes forty seconds east (S 57-00-40 E) fifty decimal four seven (50.47) metres;

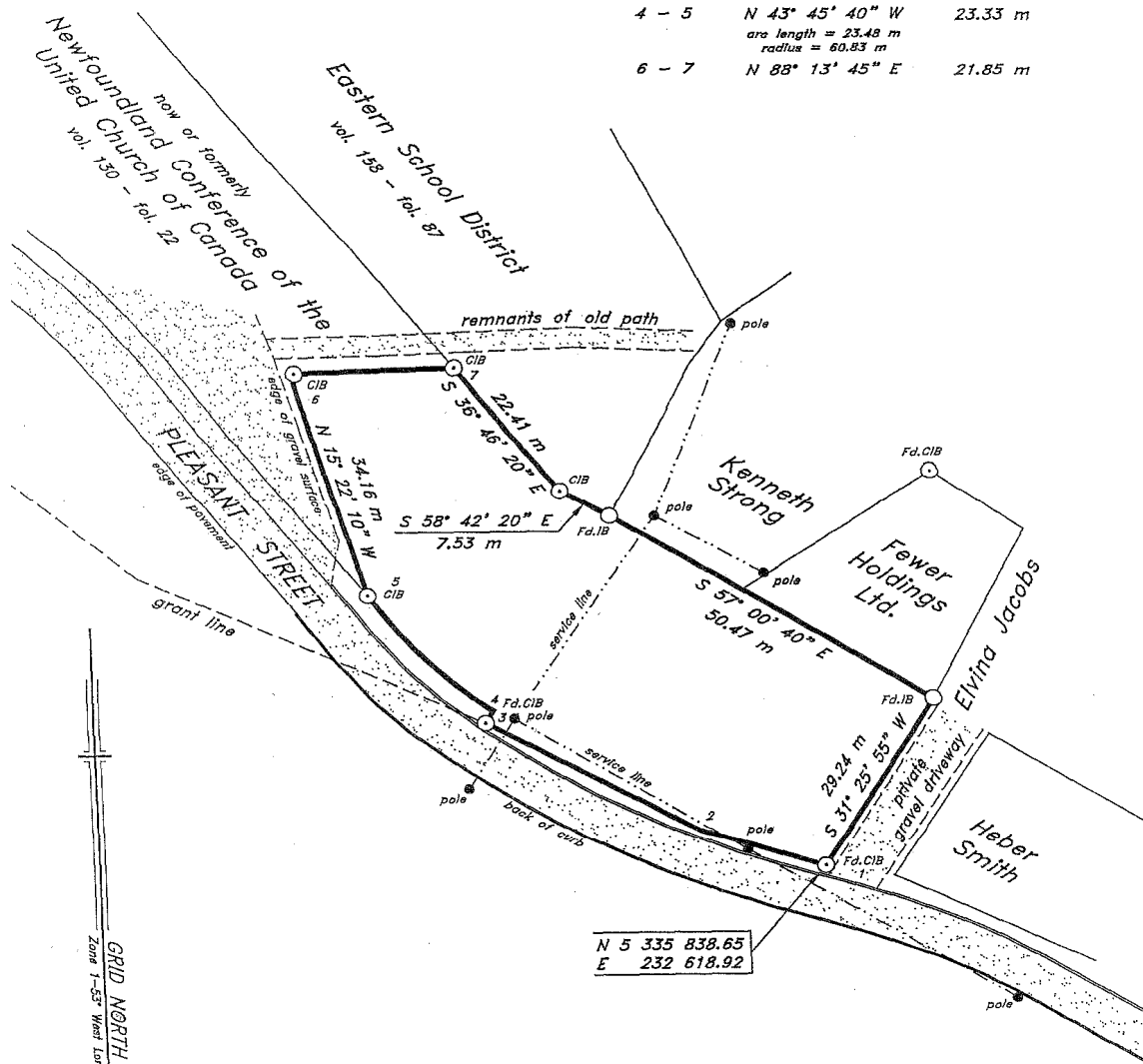
THENCE by property of Elvina Jacobs (private gravel driveway) south thirty-one degrees twenty-five minutes fifty-five seconds west (S 31-25-55 W) twenty-nine decimal two four (29.24) metres, more or less to the point of beginning and containing an area of 0.2858 hectares.

All bearings refer to the above mentioned Projection.

November 9, 2012

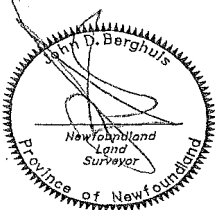
SCHEDULE "B"

STATION	BEARING	DISTANCE
1 - 2	N 71° 30' 55" W	17.33 m
2 - 3	N 59° 28' 05" W	32.67 m
3 - 4	N 29° 58' 30" E	2.00 m
4 - 5	N 43° 45' 40" W	23.33 m
arc length = 23.48 m radius = 60.83 m		
6 - 7	N 88° 13' 45" E	21.85 m



Area = 0.2858 hectares

NOTE (CIB) CAPPED IRON BAR
 (IB) IRON BAR
 Fd. FOUND
 - NO SCALE FACTOR USED
 ALL DISTANCES ARE GRID DISTANCES

CONTROL MONUMENTS
(NAD-83)

78G2018	N 5 338 706.299
	E 232 113.510
78G2019	N 5 339 129.397
	E 232 174.751

(((CONTROL SURVEYS LTD.

NEWFOUNDLAND LAND SURVEYORS

39 MARINE DRIVE, A5A 1M5 - Tel: (709) 486-3666

Clareville

Newfoundland

SURVEY ON BEHALF OF
ESTATE OF THE LATE NORMAN KEEL

Clareville

Newfoundland

SCALE: 1 : 750

JOB No.: 2012-185

DATE: April 9, 2012

SURVEY BY: J.D.R.

Nov 9

TRUSTEE ACT

ESTATE NOTICE

IN THE MATTER OF the Estate and Effects of late WYLIE W. BOYD of the Town of Summerford, in the Province of Newfoundland and Labrador, Retired Gentleman, Deceased.

All persons claiming to be creditors of or who have any claims or demands upon or affecting the Estate of WYLIE W. BOYD, the aforesaid deceased, who died at Town of Gander, in the Province of Newfoundland and Labrador on or about the 10th day of May, 2012, are hereby requested to send particulars thereof in writing, duly attested, to the undersigned Solicitor for the Administratrix of the Estate on or before the 20th day of November, 2012 after which date the Administratrix will proceed to distribute the said state having regard only to the claims of which she shall then have had notice.

DATED at the Town of Gander, Newfoundland and Labrador, this 31st day of October, 2012.

BONNELL LAW
Solicitor for the Administratrix
PER: R. Archibald Bonnell

ADDRESS FOR SERVICE:

P.O. Box 563
218 Airport Boulevard
Gander, NL A1V 2E1

Tel: (709) 651-4949
Fax: (709) 651-4951

Nov 9 & 16

ESTATE NOTICE

IN THE MATTER OF the Estate and Effects of late HORACE GILLINGHAM of the Community of George's Point, Gander Bay South, in the Province of Newfoundland and Labrador, Retired Person, Deceased.

All persons claiming to be creditors of or who have any claims or demands upon or affecting the Estate of HORACE GILLINGHAM, the aforesaid deceased, who died at Town of Gander, in the Province of Newfoundland and Labrador on or about the 10th day of July, 2012, are hereby requested to send particulars thereof in writing, duly attested, to the undersigned Solicitor for the Executor of the Estate on or before the 22nd day of November, 2012 after which date the Executor will proceed to distribute the said

Estate having regard only to the claims of which he shall then have had notice.

DATED at the Town of Gander, Newfoundland and Labrador, this 1st day of November, 2012.

BONNELL LAW
Solicitor for the Executor
PER: R. Archibald Bonnell

ADDRESS FOR SERVICE:

P.O. Box 563
218 Airport Boulevard
Gander, NL A1V 2E1

Tel: (709) 651-4949
Fax: (709) 651-4951

Nov 9 & 16

ESTATE NOTICE

IN THE MATTER OF the Estate and Effects of late HILDA PIPPY of the Town of Twillingate, in the Province of Newfoundland and Labrador, Homemaker, Deceased.

All persons claiming to be creditors of or who have any claims or demands upon or affecting the Estate of HILDA PIPPY, the aforesaid deceased, who died at Town of Twillingate, in the Province of Newfoundland and Labrador on or about the 7th day of January, 2006, are hereby requested to send particulars thereof in writing, duly attested, to the undersigned Solicitor for the Executor of the Estate on or before the 21st day of November, 2012 after which date the Executor will proceed to distribute the said Estate having regard only to the claims of which he shall then have had notice.

DATED at the Town of Gander, Newfoundland and Labrador, this 31st day of October, 2012.

BONNELL LAW
Solicitor for the Executor
PER: R. Archibald Bonnell

ADDRESS FOR SERVICE:

P.O. Box 563
218 Airport Boulevard
Gander, NL A1V 2E1

Tel: (709) 651-4949
Fax: (709) 651-4951

Nov 9 & 16



THE NEWFOUNDLAND AND LABRADOR GAZETTE

PART II

SUBORDINATE LEGISLATION FILED UNDER THE STATUTES AND SUBORDINATE LEGISLATION ACT

Vol. 87

ST. JOHN'S, FRIDAY, NOVEMBER 9, 2012

No. 45

Index

PART I

City of St. John's Act – Notices	429
Corporations Act – Notices	423
Mechanics' Lien Act – Notices	431
Mineral Act – Notice	427
Quieting of Titles Act – Notice	432
Trustee Act – Notices	434
Urban and Rural Planning Act, 2000 – Notices	430

PART II

CONTINUING INDEX OF SUBORDINATE LEGISLATION

Title of Act and Subordinate Legislation made thereunder	CNLR or NL Reg.	Amendment	NL Gazette Date & Page No.
--	--------------------	-----------	-------------------------------

**No Subordinate Legislation
Received at Time of Printing**

The Newfoundland and Labrador Gazette is published from the office of William E. Parsons, Queen's Printer.

Copy for publication must be received by **Friday, 4:30 p.m.**, seven days before publication date to ensure inclusion in next issue.

Advertisements must be submitted in either PDF format or as a MSWord file. When this is not possible, advertisements must be either typewritten or printed legibly, separate from covering letter. Number of insertions required must be stated and the names of all signing officers typewritten or printed.

Copy may be mailed to the address below, faxed to (709) 729-1900 or emailed to queensprinter@gov.nl.ca.

Advertising rates are available upon request. Subscription rate for *The Newfoundland and Labrador Gazette* is \$125.00 for 52 weeks plus applicable tax (\$131.25). Weekly issues of \$3.00 per copy, plus tax payable in advance.

All cheques, money orders, etc., should be made payable to THE NEWFOUNDLAND EXCHEQUER ACCOUNT and all correspondence should be addressed to: Office of the Queen's Printer, P. O. Box 8700, Ground Floor, East Block, Confederation Building, St. John's, NL A1B 4J6. Telephone (709) 729-3649. Fax: (709) 729-1900.

Web Site: <http://www.gs.gov.nl.ca/printer/index.html>

**Place your order by contacting:
Office of The Queen's Printer
Confederation Building, East Block
St. John's, NL A1B 4J6
Telephone: (709) 729-3649 Fax: (709) 729-1900
email: queensprinter@gov.nl.ca**

**Government Information Product
Publication Rate Mail**

G.S.T. # R107442683

All requests for Subscription and Legislation MUST be prepaid.