

NOTE: Attached to the end of Part II is a revised list of Statutes of Newfoundland and Labrador, 2012 as enacted up to December 22, 2012.

Attached is a list
of publication dates
for the Year 2013



THE NEWFOUNDLAND AND LABRADOR GAZETTE

PART I

PUBLISHED BY AUTHORITY

Vol. 88

ST. JOHN'S, FRIDAY, JANUARY 11, 2013

No. 2

LANDS ACT

NOTICE OF INTENT

Lands Act, c36, SNL 1991, as amended

NOTICE IS HEREBY given that ROB SLADE of Labrador City, NL intends to apply to the Department of Environment and Conservation, two months from the publication of this notice, to acquire title, pursuant to Section 7(2) (e) of the said Act, to that piece of Crown land situated within fifteen 15 metres of the waters of Ashuanipi River in the Electoral District of Labrador West for the purpose of a wharf and is more particularly described as follows:

*Bounded on the North by Crown land
for a distance of 2 metres;
Bounded on the East by Crown land
for a distance of 2 metres;
Bounded on the South by Crown land
for a distance of 2 metres;
Bounded on the West by a River
for a distance of 0 metres;
and containing an area of
approximately 10 square metres.*

Any person wishing to object to the application must file the objection, in writing, within one month from the publication of this Notice, with reasons for it, to the

Minister of Environment and Conservation, and mail to the nearest Regional Lands Office:

c/o Eastern Regional Lands Office, P.O. Box 8700, 5 Mews Place, St. John's, NL, A1B 4J6.

c/o Central Regional Lands Office, P.O. Box 2222, Gander, NL, A1V 1L7.

c/o Western Regional Lands Office, P.O. Box 2006, Noton Building, Corner Brook, NL, A2H 6J8.

c/o Labrador Regional Lands Office, P.O. Box 3014, Station "B", Happy Valley-Goose Bay, NL, A0P 1E0.

For further information on the proposed application, please contact Rob Slade, Telephone number: (709) 944-7258.

Jan 11

NOTICE OF INTENT

Lands Act c36 1991, as amended

NOTICE IS HEREBY given that the TOWN OF LARK HARBOUR, NL intends to apply to the Department of Environment and Conservation, two months from the publication of this Notice, to acquire title, pursuant to Section 7(2) of the said Act, to that piece of Crown land situated within fifteen (15) metres of the waters of Fairfax

Brook in the Electoral District of Bay of Islands for the purpose of providing a water supply for the TOWN OF LARK HARBOUR and is more particularly described as follows:

*Bounded on the North by Crown Land
for a distance of 893 metres;
Bounded on the East by Crown Land
for a distance of 1913 metres;
Bounded on the South by Crown Land
for a distance of 893 metres;
Bounded on the West by Crown Land
for a distance of 1913 metres
and containing an area of
approximately 170.8 hectares.*

Any person wishing to object to the application must file the objection, in writing, within one month from the publication of this Notice, with reasons for it, to the Minister of Environment and Conservation, and mail to the nearest Regional Lands Office:

c/o Eastern Regional Lands Office, P.O. Box 8700, 5 Mews Place, St. John's, NL, A1B 4J6.

c/o Central Regional Lands Office, P.O. Box 2222, Gander, NL, A1V 1L7.

c/o Western Regional Lands Office, P.O. Box 2006, Noton Building, Corner Brook, NL, A2H 6J8.

c/o Labrador Regional Lands Office, P.O. Box 3014, Station "B", Happy Valley-Goose Bay, NL, A0P 1E0.

For further information on the proposed application, please contact the Town Clerk for the Town of Lark Harbour, Telephone Number: 709-681-2270.

Jan 11

QUIETING OF TITLES ACT

2011 NO. ST. J. 7466 IN THE SUPREME COURT OF NEWFOUNDLAND AND LABRADOR TRIAL DIVISION (GENERAL)

IN THE MATTER of an Application of STEPHEN BATTEN and NICOLE BATTEN pursuant to the *Quieting of Titles Act*, cQ-3, RSNL1990

AND

IN THE MATTER of that piece or parcel of land situate at Bay Roberts, in the Province of Newfoundland and Labrador (hereinafter referred to as the "Subject Property").

NOTICE OF APPLICATION UNDER THE *QUIETING OF TITLES ACT*, cQ-3, RSNL1990.

NOTICE IS HEREBY given to all parties that STEPHEN BATTEN and NICOLE BATTEN have applied to the

Supreme Court of Newfoundland and Labrador, St. John's, to have the title to ALL THAT piece or parcel of land situate in the Town of Bay Roberts, in the Province of Newfoundland and Labrador and being more particularly described in Schedule "A" hereto annexed and outlined on the plan annexed hereto marked Schedule "B" for which they claim to be the owners, investigated and for a Declaration that they are the absolute owners in fee simple and that they have been ordered to publish notice of the Application as required by the before noted Act.

All persons having title adverse to the said title claimed by STEPHEN BATTEN and NICOLE BATTEN shall file in the Registry of the Supreme Court of Newfoundland and Labrador, St. John's, in the Province of Newfoundland and Labrador, particulars of such adverse claim and serve the same together with an Affidavit verifying same on the undersigned Solicitor for the Applicants on or before the 16th day of January, 2013, after which date no party having any claim shall be permitted to file the same or to be heard except by special leave of the Court and subject to such conditions as the Court may deem just.

All such adverse claims shall then be investigated in such manner as the said Supreme Court of Newfoundland and Labrador, St. John's, may direct.

DATED at Bay Roberts, in the Province of Newfoundland and Labrador this 25th day of November, 2012.

MORROW & MORROW
Solicitor for the Applicants
PER: Adam S. Gosse

ADDRESS FOR SERVICE:
P. O. Box 870
Bay Roberts, NL A0A 1G0

Tel: (709) 786-9207
1 888 786-9207
Fax: (709) 786-9507

SCHEDULE "A"

ALL that piece or parcel of land situate and being on the Northern side of Delaney's Road, in the Town of Bay Roberts, in the Electoral District of Port de Grave in the Province of Newfoundland and Labrador, being bound and abutted as follows:

BEGINNING at a point on the northern limit of Delaney's Road, (Res. 30m Wide) said point being the Southwest corner of the herein described property and having NAD 83 coordinates of North 5 270 022.567 metres and East 282 436.152 metres on the Modified Three Degree Transverse Mercator Projection for the Province of Newfoundland and Labrador, Zone 1;

THENCE running by the Eastern side of land now or formerly belonging to Canadian National Railway (Res. 15.24m Wide) now abandoned, North 28°55'10" East 325.159 metres;

THENCE running by land Bridget Mercer South 46°08'21" East 60.660 metres, South 44°50'52" East 38.740 metres, North 63°10'38" East 18.240 metres, North 52°05'53" East 31.590 metres, North 57°46'44" East 20.784 metres, North 46°38'03" East 17.963 metres;

THENCE running by land of Atlantic Grocery Distributors Ltd., South 77°29'41" East 51.407 metres, South 38°57'24" East 145.840 metres;

THENCE running by the Northwestern limit of a 10 meter Reservation of a brook, for a distance of ±217.7 metres in a general Southwesterly direction on a chord bearing and distance of South 46°52'27" West 209.441 metres;

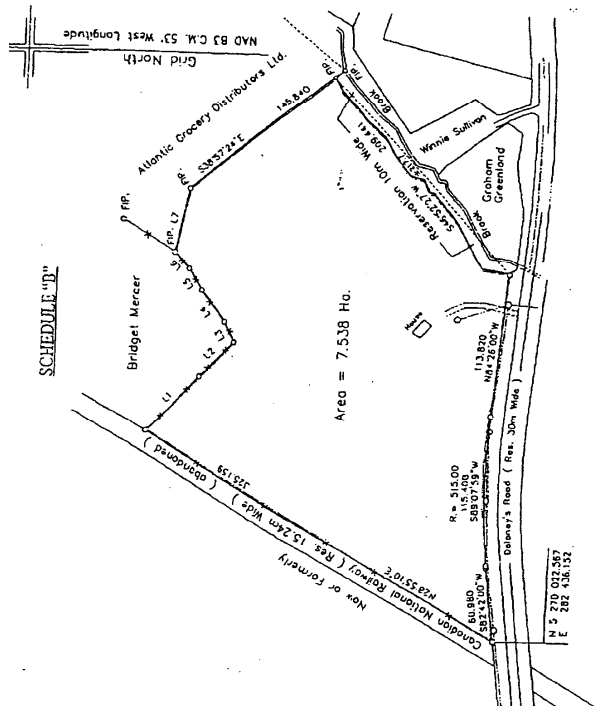
THENCE running by the Northern side of Delaney's Road (Res. 30m Wide) North 84°26'00" West 113.820 metres;

THENCE running by the Northern limit of Delaney's Road (Res. 30m Wide) along the arc of a curve having a radius of 515.00 metres on a chord Bearing and distance of South 89°07'59" West 115.408 metres;

THENCE running by the Northern limit of Delaney's Road (Res. 30m Wide), South 82°42'00" West 60.980 metres; more or less, to the Point of Beginning.

THE ABOVE described piece or parcel of land contains an area of 7.538 Hectares, more or less. Which land is as shown and delineated on the attached plan dated May 18th, 2009.

ALL BEARINGS being referred to Grid North, NAD 83 Datum.



LINE	DISTANCE	BEARING
1	515.00	S 89°07'59" W
2	60.980	S 82°42'00" W
3	113.820	N 84°26'00" W
4	209.441	S 46°52'27" W
5	145.840	S 38°57'24" E
6	51.407	S 77°29'41" E
7	17.963	N 46°38'03" E
8	20.784	N 57°46'44" E
9	31.590	N 52°05'53" E
10	18.240	N 63°10'38" E
11	38.740	S 44°50'52" E
12	60.660	S 46°08'21" E

NOTE:

Ⓢ Unauthorised use, alteration or reproduction is prohibited by law as outlined in THE COPYRIGHT ACT. However, use and reproduction thereof by or on behalf of the person to whom this report is certified is permitted, provided that no alterations whatsoever are made thereunder.

Control Monument Values:

81C2191 N 5 270 168.506
E 283 131.076
81G2192 N 5 269 629.586
E 283 027.532

Fence.....
Power Line.....
Coppered Iron Pin.....
Found Iron Pin.....
Fence Post.....
Scale Factor..... 0.999904

NORMAN & PARSONS SURVEYS LIMITED.
Newfoundland Land Surveyors
P.O. Box 697 Bay Roberts NL A0A 1G0

SURVEY ON BEHALF OF
Slyven Botten

Bay Roberts
Scale: 1:3000
Date: May 18, 2009
Survey by: NL
Plan No. 2009006



TRUSTEE ACT

ESTATE NOTICE

IN THE ESTATE of NELLIE OFFREY, late of the Town of Hawke's Bay, in the Province of Newfoundland and Labrador, Retired, deceased.

IN THE MATTER of the Estate of NELLIE OFFREY, late of the Town of Hawke's Bay, in the Province of Newfoundland and Labrador, deceased.

All persons claiming to be creditors of or who have any claims or demands upon or affecting the Estate of NELLIE OFFREY, late of Town of Hawke's Bay, in the Province of Newfoundland and Labrador, deceased, are hereby requested to send particulars of the same in writing, duly attested to the undersigned Solicitors for the Executrix of the estate on or before the 19th day of February, 2013 after which date the said Executrix will proceed to distribute the said Estate having regard only to the claims of which she shall then have had notice.

DATED at the City of Corner Brook, in the Province of Newfoundland and Labrador, this 4th day of January, 2013.

POOLE ALTHOUSE
Solicitors for the Executrix
PER: Glen G. Seaborn

ADDRESS FOR SERVICE:
49-51 Park Street
Corner Brook, NL A2H 2X1

Tel: (709) 634-3136
Fax: (709) 634-8247

Jan 11



THE NEWFOUNDLAND AND LABRADOR GAZETTE

PART II

SUBORDINATE LEGISLATION

FILED UNDER THE STATUTES AND SUBORDINATE LEGISLATION ACT

Vol. 88

ST. JOHN'S, FRIDAY, JANUARY 11, 2013

No. 2

NEWFOUNDLAND AND LABRADOR REGULATIONS

NLR 1/13
NLR 2/13
NLR 3/13
NLR 4/13



NEWFOUNDLAND AND LABRADOR REGULATION 1/13

Motorized Snow Vehicles and All-Terrain Vehicles Regulations
(Amendment)
under the
Motorized Snow Vehicles and All-Terrain Vehicles Act
(O.C. 2013-002)

(Filed January 8, 2013)

Under the authority of section 21 of the *Motorized Snow Vehicles and All-Terrain Vehicles Act*, the Lieutenant-Governor in Council makes the following regulations.

Dated at St. John's, January 4, 2013.

Robert Thompson
Clerk of the Executive Council

REGULATIONS

Analysis

1. S.15.1 Added
Check station

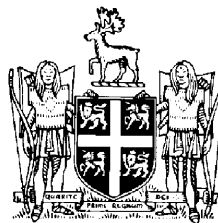
CNLR 1163/96
as amended

1. The *Motorized Snow Vehicles and All-Terrain Vehicles Regulations* are amended by adding immediately after section 15 the following:

Check station

15.1 A peace officer may establish a check station to ensure compliance with the Act and these regulations and the operator of a vehicle shall stop at a check station when directed to do so by a peace officer or by a sign posted by a peace officer.

©Queen's Printer



NEWFOUNDLAND AND LABRADOR REGULATION 2/13

Pension Benefits Act Regulations (Amendment)
under the
Pension Benefits Act, 1997
(O.C. 2013-001)

(Filed January 8, 2013)

Under the authority of subsection 78(1) of the *Pension Benefits Act, 1997*, the Lieutenant-Governor in Council makes the following regulations.

Dated at St. John's, January 4, 2013.

Robert Thompson
Clerk of the Executive Council

REGULATIONS

Analysis

- | | |
|--|-----------------|
| 1. S.41 Amdt.
Application to public sector
plans | 2. Commencement |
|--|-----------------|

NLR 114/96
as amended

1. Paragraph 41(4)(a) of the *Pension Benefits Act Regulations* is repealed and the following substituted:

- (a) exempt for the period from January 1, 2011 until December 31, 2015 from the requirement that the employer pay an amount under paragraph 12(3)(d) of these regulations; and

Commencement

2. These regulations are considered to have come into force on January 1, 2011.

©Queen's Printer



NEWFOUNDLAND AND LABRADOR REGULATION 3/13

Interim Development Regulations, 2003 (Amendment)
under the
Urban and Rural Planning Act, 2000

(Filed January 8, 2013)

Under the authority of section 34 of the *Urban and Rural Planning Act, 2000*, I make the following regulations.

Dated at St. John's, December 21, 2012.

Kevin O'Brien
Minister of Municipal Affairs

REGULATIONS

Analysis

1. Sch. Amdt.

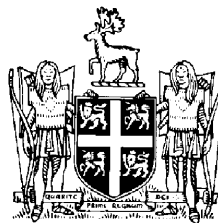
NLR137/03
as amended

1. The Schedule to the *Interim Development Regulations, 2003* is amended by deleting the following references:

- (a) "Belleoram Municipal Planning Area";**
- (b) "Eastport Municipal Planning Area";**
- (c) "Old Perlican Municipal Planning Area";**
- (d) "Postville Municipal Planning Area";**

- (e) "Sandy Cove Municipal Planning Area";
- (f) "Small Point-Broad Cove-Black Head-Adam's Cove
Municipal Planning Area"; and
- (g) "St. Jacques-Coombs Cove Municipal Planning Area".

©Queen's Printer



NEWFOUNDLAND AND LABRADOR REGULATION 4/13

*Notice of Protected Water Supply Area of Wahnahnish Lake,
WS-S-0775, Town of Wabush
under the
Water Resources Act*

(Filed January 8, 2013)

Under the authority of section 39 of the *Water Resources Act*, I designate the area generally known as the *Wahnahnish Lake Water Supply Area, WS-S-0775*, for the Town of Wabush as a protected water supply area.

Dated at St. John's, November 29, 2012.

Thomas J. Hedderson
Minister of Environment and Conservation

NOTICE

This area includes all lands in the Provincial Electoral District of Labrador West abutted and bounded as follows:

Beginning at a point having scaled UTM coordinates of easting 643,999 metres and northing 5,861,158 metres;

Then running in a northeasterly direction for a distance of 369 metres, more or less, to a point having scaled UTM coordinates of easting 644,291 metres and northing 5,861,383 metres;

Then running in a northerly direction for a distance of 762 metres, more or less, to a point having scaled UTM coordinates of easting 644,089 metres and northing 5,862,117 metres;

Then running in a northeasterly direction for a distance of 296 metres, more or less, to a point having scaled UTM coordinates of easting 644,242 metres and northing 5,862,370 metres;

Then running in a northwesterly direction for a distance of 1214 metres, more or less, to a point having scaled UTM coordinates of easting 643,580 metres and northing 5,863,387 metres;

Then running in a northeasterly direction for a distance of 709 metres, more or less, to a point having scaled UTM coordinates of easting 644,122 metres and northing 5,863,845 metres;

Then running in a easterly direction for a distance of 590 metres, more or less, to a point having scaled UTM coordinates of easting 644,702 metres and northing 5,863,953 metres;

Then running in a northerly direction for a distance of 270 metres, more or less, to a point having scaled UTM coordinates of easting 644,713 metres and northing 5,864,224 metres;

Then running in a easterly direction for a distance of 475 metres, more or less, to a point having scaled UTM coordinates of easting 645,172 metres and northing 5,864,348 metres;

Then running in a easterly direction for a distance of 645 metres, more or less, to a point having scaled UTM coordinates of easting 645,816 metres and northing 5,864,348 metres;

Then running in a southeasterly direction for a distance of 469 metres, more or less, to a point having scaled UTM coordinates of easting 646,176 metres and northing 5,864,048 metres;

Then running in a southeasterly direction for a distance of 298 metres, more or less, to a point having scaled UTM coordinates of easting 646,323 metres and northing 5,863,789 metres;

Then running in a southeasterly direction for a distance of 663 metres, more or less, to a point having scaled UTM coordinates of easting 646,927 metres and northing 5,863,515 metres;

Then running in a southerly direction for a distance of 229 metres, more or less, to a point having scaled UTM coordinates of easting 646,955 metres and northing 5,863,288 metres;

Then running in a southwesterly direction for a distance of 134 metres, more or less, to a point having scaled UTM coordinates of easting 646,863 metres and northing 5,863,189 metres;

Then running in a southerly direction for a distance of 1140 metres, more or less, to a point having scaled UTM coordinates of easting 647,103 metres and northing 5,862,075 metres;

Then running in a easterly direction for a distance of 162 metres, more or less, to a point having scaled UTM coordinates of easting 647,256 metres and northing 5,862,023 metres;

Then running in a southwesterly direction for a distance of 224 metres, more or less, to a point having scaled UTM coordinates of easting 647,167 metres and northing 5,861,817 metres;

Then running in a southeasterly direction for a distance of 824 metres, more or less, to a point having scaled UTM coordinates of easting 647,520 metres and northing 5,861,072 metres;

Then running in a southerly direction for a distance of 160 metres, more or less, to a point having scaled UTM coordinates of easting 647,522 metres and northing 5,860,913 metres;

Then running in a easterly direction for a distance of 158 metres, more or less, to a point having scaled UTM coordinates of easting 647,676 metres and northing 5,860,882 metres;

Then running in a southeasterly direction for a distance of 639 metres, more or less, to a point having scaled UTM coordinates of easting 647,992 metres and northing 5,860,327 metres;

Then running in a southerly direction for a distance of 254 metres, more or less, to a point having scaled UTM coordinates of easting 648,044 metres and northing 5,860,078 metres;

Then running in a southwesterly direction for a distance of 220 metres, more or less, to a point having scaled UTM coordinates of easting 647,909 metres and northing 5,859,905 metres;

Then running in a southerly direction for a distance of 240 metres, more or less, to a point having scaled UTM coordinates of easting 647,973 metres and northing 5,859,674 metres;

Then running in a southeasterly direction for a distance of 251 metres, more or less, to a point having scaled UTM coordinates of easting 648,153 metres and northing 5,859,498 metres;

Then running in a easterly direction for a distance of 142 metres, more or less, to a point having scaled UTM coordinates of easting 648,292 metres and northing 5,859,527 metres;

Then running in a southeasterly direction for a distance of 363 metres, more or less, to a point having scaled UTM coordinates of easting 648,615 metres and northing 5,859,359 metres;

Then running in a southwesterly direction for a distance of 188 metres, more or less, to a point having scaled UTM coordinates of easting 648,541 metres and northing 5,859,187 metres;

Then running in a southeasterly direction for a distance of 536 metres, more or less, to a point having scaled UTM coordinates of easting 648,963 metres and northing 5,858,856 metres;

Then running in a southerly direction for a distance of 666 metres, more or less, to a point having scaled UTM coordinates of easting 648,962 metres and northing 5,858,190 metres;

Then running in a southeasterly direction for a distance of 198 metres, more or less, to a point having scaled UTM coordinates of easting 649,077 metres and northing 5,858,029 metres;

Then running in a southerly direction for a distance of 185 metres, more or less, to a point having scaled UTM coordinates of easting 649,082 metres and northing 5,857,844 metres;

Then running in a easterly direction for a distance of 119 metres, more or less, to a point having scaled UTM coordinates of easting 649,199 metres and northing 5,857,823 metres;

Then running in a southerly direction for a distance of 591 metres, more or less, to a point having scaled UTM coordinates of easting 649,411 metres and northing 5,857,271 metres;

Then running in a southeasterly direction for a distance of 460 metres, more or less, to a point having scaled UTM coordinates of easting 649,662 metres and northing 5,856,885 metres;

Then running in a easterly direction for a distance of 169 metres, more or less, to a point having scaled UTM coordinates of easting 649,830 metres and northing 5,856,898 metres;

Then running in a southeasterly direction for a distance of 608 metres, more or less, to a point having scaled UTM coordinates of easting 650,107 metres and northing 5,856,357 metres;

Then running in a southeasterly direction for a distance of 403 metres, more or less, to a point having scaled UTM coordinates of easting 650,444 metres and northing 5,856,135 metres;

Then running in a southeasterly direction for a distance of 227 metres, more or less, to a point having scaled UTM coordinates of easting 650,555 metres and northing 5,855,937 metres;

Then running in a southerly direction for a distance of 123 metres, more or less, to a point having scaled UTM coordinates of easting 650,523 metres and northing 5,855,818 metres;

Then running in a southeasterly direction for a distance of 363 metres, more or less, to a point having scaled UTM coordinates of easting 650,714 metres and northing 5,855,510 metres;

Then running in a southeasterly direction for a distance of 383 metres, more or less, to a point having scaled UTM coordinates of easting 650,948 metres and northing 5,855,207 metres;

Then running in a southeasterly direction for a distance of 500 metres, more or less, to a point having scaled UTM coordinates of easting 651,229 metres and northing 5,854,793 metres;

Then running in a southerly direction for a distance of 380 metres, more or less, to a point having scaled UTM coordinates of easting 651,274 metres and northing 5,854,416 metres;

Then running in a southeasterly direction for a distance of 190 metres, more or less, to a point having scaled UTM coordinates of easting 651,395 metres and northing 5,854,270 metres;

Then running in a southerly direction for a distance of 203 metres, more or less, to a point having scaled UTM coordinates of easting 651,416 metres and northing 5,854,068 metres;

Then running in a southwesterly direction for a distance of 206 metres, more or less, to a point having scaled UTM coordinates of easting 651,311 metres and northing 5,853,890 metres;

Then running in a southerly direction for a distance of 304 metres, more or less, to a point having scaled UTM coordinates of easting 651,380 metres and northing 5,853,594 metres;

Then running in a southeasterly direction for a distance of 267 metres, more or less, to a point having scaled UTM coordinates of easting 651,572 metres and northing 5,853,409 metres;

Then running in a easterly direction for a distance of 155 metres, more or less, to a point having scaled UTM coordinates of easting 651,716 metres and northing 5,853,465 metres;

Then running in a southerly direction for a distance of 513 metres, more or less, to a point having scaled UTM coordinates of easting 651,888 metres and northing 5,852,982 metres;

Then running in a southeasterly direction for a distance of 187 metres, more or less, to a point having scaled UTM coordinates of easting 651,991 metres and northing 5,852,826 metres;

Then running in a easterly direction for a distance of 294 metres, more or less, to a point having scaled UTM coordinates of easting 652,284 metres and northing 5,852,799 metres;

Then running in a southeasterly direction for a distance of 153 metres, more or less, to a point having scaled UTM coordinates of easting 652,381 metres and northing 5,852,680 metres;

Then running in a northeasterly direction for a distance of 322 metres, more or less, to a point having scaled UTM coordinates of easting 652,612 metres and northing 5,852,905 metres;

Then running in a southeasterly direction for a distance of 287 metres, more or less, to a point having scaled UTM coordinates of easting 652,875 metres and northing 5,852,790 metres;

Then running in a southeasterly direction for a distance of 420 metres, more or less, to a point having scaled UTM coordinates of easting 653,228 metres and northing 5,852,561 metres;

Then running in a southeasterly direction for a distance of 263 metres, more or less, to a point having scaled UTM coordinates of easting 653,385 metres and northing 5,852,350 metres;

Then running in a southwesterly direction for a distance of 177 metres, more or less, to a point having scaled UTM coordinates of easting 653,309 metres and northing 5,852,190 metres;

Then running in a westerly direction for a distance of 133 metres, more or less, to a point having scaled UTM coordinates of easting 653,177 metres and northing 5,852,174 metres;

Then running in a southwesterly direction for a distance of 133 metres, more or less, to a point having scaled UTM coordinates of easting 653,077 metres and northing 5,852,087 metres;

Then running in a southerly direction for a distance of 102 metres, more or less, to a point having scaled UTM coordinates of easting 653,081 metres and northing 5,851,985 metres;

Then running in a southwesterly direction for a distance of 163 metres, more or less, to a point having scaled UTM coordinates of easting 652,966 metres and northing 5,851,869 metres;

Then running in a westerly direction for a distance of 238 metres, more or less, to a point having scaled UTM coordinates of easting 652,733 metres and northing 5,851,920 metres;

Then running in a southwesterly direction for a distance of 190 metres, more or less, to a point having scaled UTM coordinates of easting 652,647 metres and northing 5,851,751 metres;

Then running in a southeasterly direction for a distance of 604 metres, more or less, to a point having scaled UTM coordinates of easting 653,115 metres and northing 5,851,369 metres;

Then running in a southerly direction for a distance of 784 metres, more or less, to a point having scaled UTM coordinates of easting 652,963 metres and northing 5,850,600 metres;

Then running in a southeasterly direction for a distance of 755 metres, more or less, to a point having scaled UTM coordinates of easting 653,581 metres and northing 5,850,166 metres;

Then running in a southeasterly direction for a distance of 417 metres, more or less, to a point having scaled UTM coordinates of easting 653,801 metres and northing 5,849,812 metres;

Then running in a southwesterly direction for a distance of 402 metres, more or less, to a point having scaled UTM coordinates of easting 653,560 metres and northing 5,849,490 metres;

Then running in a southerly direction for a distance of 946 metres, more or less, to a point having scaled UTM coordinates of easting 653,563 metres and northing 5,848,544 metres;

Then running in a generally westerly direction along the Labrador / Quebec provincial boundary to a point having scaled UTM coordinates of easting 643,869 metres and northing 5,847,979 metres;

Then running in a southwesterly direction for a distance of 442 metres, more or less, to a point having scaled UTM coordinates of easting 643,654 metres and northing 5,847,593 metres;

Then running in a northwesterly direction for a distance of 256 metres, more or less, to a point having scaled UTM coordinates of easting 643,434 metres and northing 5,847,723 metres;

Then running in a northwesterly direction for a distance of 331 metres, more or less, to a point having scaled UTM coordinates of easting 643,306 metres and northing 5,848,028 metres;

Then running in a northerly direction for a distance of 820 metres, more or less, to a point having scaled UTM coordinates of easting 643,471 metres and northing 5,848,831 metres;

Then running in a northerly direction for a distance of 516 metres, more or less, to a point having scaled UTM coordinates of easting 643,448 metres and northing 5,849,346 metres;

Then running in a northwesterly direction for a distance of 520 metres, more or less, to a point having scaled UTM coordinates of easting 643,187 metres and northing 5,849,795 metres;

Then running in a northwesterly direction for a distance of 596 metres, more or less, to a point having scaled UTM coordinates of easting 642,819 metres and northing 5,850,265 metres;

Then running in a northwesterly direction for a distance of 2804 metres, more or less, to a point having scaled UTM coordinates of easting 640,696 metres and northing 5,852,097 metres;

Then running in a southwesterly direction for a distance of 653 metres, more or less, to a point having scaled UTM coordinates of easting 640,181 metres and northing 5,851,696 metres;

Then running in a westerly direction for a distance of 388 metres, more or less, to a point having scaled UTM coordinates of easting 639,794 metres and northing 5,851,676 metres;

Then running in a northwesterly direction for a distance of 359 metres, more or less, to a point having scaled UTM coordinates of easting 639,573 metres and northing 5,851,959 metres;

Then running in a northwesterly direction for a distance of 281 metres, more or less, to a point having scaled UTM coordinates of easting 639,341 metres and northing 5,852,118 metres;

Then running in a northwesterly direction for a distance of 318 metres, more or less, to a point having scaled UTM coordinates of easting 639,197 metres and northing 5,852,401 metres;

Then running in a northwesterly direction for a distance of 184 metres, more or less, to a point having scaled UTM coordinates of easting 639,040 metres and northing 5,852,497 metres;

Then running in a northerly direction for a distance of 610 metres, more or less, to a point having scaled UTM coordinates of easting 638,871 metres and northing 5,853,083 metres;

Then running in a northeasterly direction for a distance of 282 metres, more or less, to a point having scaled UTM coordinates of easting 639,075 metres and northing 5,853,278 metres;

Then running in a southeasterly direction for a distance of 736 metres, more or less, to a point having scaled UTM coordinates of easting 639,713 metres and northing 5,852,911 metres;

Then running in a easterly direction for a distance of 234 metres, more or less, to a point having scaled UTM coordinates of easting 639,946 metres and northing 5,852,938 metres;

Then running in a northeasterly direction for a distance of 523 metres, more or less, to a point having scaled UTM coordinates of easting 640,188 metres and northing 5,853,402 metres;

Then running in a easterly direction for a distance of 275 metres, more or less, to a point having scaled UTM coordinates of easting 640,448 metres and northing 5,853,490 metres;

Then running in a northeasterly direction for a distance of 547 metres, more or less, to a point having scaled UTM coordinates of easting 640,800 metres and northing 5,853,909 metres;

Then running in a northeasterly direction for a distance of 463 metres, more or less, to a point having scaled UTM coordinates of easting 641,130 metres and northing 5,854,233 metres;

Then running in a southeasterly direction for a distance of 130 metres, more or less, to a point having scaled UTM coordinates of easting 641,238 metres and northing 5,854,162 metres;

Then running in a northeasterly direction for a distance of 707 metres, more or less, to a point having scaled UTM coordinates of easting 641,792 metres and northing 5,854,601 metres;

Then running in a northerly direction for a distance of 379 metres, more or less, to a point having scaled UTM coordinates of easting 641,897 metres and northing 5,854,965 metres;

Then running in a easterly direction for a distance of 288 metres, more or less, to a point having scaled UTM coordinates of easting 642,180 metres and northing 5,854,917 metres;

Then running in a northeasterly direction for a distance of 1704 metres, more or less, to a point having scaled UTM coordinates of easting 643,588 metres and northing 5,855,879 metres;

Then running in a northwesterly direction for a distance of 237 metres, more or less, to a point having scaled UTM coordinates of easting 643,372 metres and northing 5,855,977 metres;

Then running in a northeasterly direction for a distance of 302 metres, more or less, to a point having scaled UTM coordinates of easting 643,513 metres and northing 5,856,244 metres;

Then running in a northerly direction for a distance of 613 metres, more or less, to a point having scaled UTM coordinates of easting 643,325 metres and northing 5,856,827 metres;

Then running in a northeasterly direction for a distance of 534 metres, more or less, to a point having scaled UTM coordinates of easting 643,743 metres and northing 5,857,161 metres;

Then running in a northeasterly direction for a distance of 247 metres, more or less, to a point having scaled UTM coordinates of easting 643,839 metres and northing 5,857,388 metres;

Then running in a northerly direction for a distance of 809 metres, more or less, to a point having scaled UTM coordinates of easting 643,599 metres and northing 5,858,162 metres;

Then running in a westerly direction for a distance of 203 metres, more or less, to a point having scaled UTM coordinates of easting 643,402 metres and northing 5,858,115 metres;

Then running in a northwesterly direction for a distance of 1014 metres, more or less, to a point having scaled UTM coordinates of easting 642,562 metres and northing 5,858,685 metres;

Then running in a northeasterly direction for a distance of 485 metres, more or less, to a point having scaled UTM coordinates of easting 642,749 metres and northing 5,859,133 metres;

Then running in a northerly direction for a distance of 844 metres, more or less, to a point having scaled UTM coordinates of easting 642,528 metres and northing 5,859,948 metres;

Then running in a westerly direction for a distance of 241 metres, more or less, to a point having scaled UTM coordinates of easting 642,296 metres and northing 5,859,883 metres;

Then running in a westerly direction for a distance of 390 metres, more or less, to a point having scaled UTM coordinates of easting 641,909 metres and northing 5,859,933 metres;

Then running in a northwesterly direction for a distance of 162 metres, more or less, to a point having scaled UTM coordinates of easting 641,789 metres and northing 5,860,040 metres;

Then running in a northerly direction for a distance of 201 metres, more or less, to a point having scaled UTM coordinates of easting 641,839 metres and northing 5,860,235 metres;

Then running in a northeasterly direction for a distance of 223 metres, more or less, to a point having scaled UTM coordinates of easting 641,968 metres and northing 5,860,417 metres;

Then running in a northerly direction for a distance of 328 metres, more or less, to a point having scaled UTM coordinates of easting 641,914 metres and northing 5,860,741 metres;

Then running in a northerly direction for a distance of 415 metres, more or less, to a point having scaled UTM coordinates of easting 642,046 metres and northing 5,861,135 metres;

Then running in a southeasterly direction for a distance of 508 metres, more or less, to a point having scaled UTM coordinates of easting 642,491 metres and northing 5,860,889 metres;

Then running in a northeasterly direction for a distance of 1017 metres, more or less, to a point having scaled UTM coordinates of easting 643,372 metres and northing 5,861,397 metres;

Then running in a easterly direction for a distance of 671 metres, more or less, to the point of commencement.

All coordinates refer to Zone 19 of the NAD 83 Universal Transverse Mercator Projection.

The Notice of Protected Water Supply Area of Wahnahnish Lake, Consolidated Newfoundland and Labrador Regulation 724/96, is repealed.

©Queen's Printer

Index

PART I

Lands Act – Notices	11
Quieting of Titles Act – Notice	12
Trustee Act – Notice	14

PART II

CONTINUING INDEX OF SUBORDINATE LEGISLATION

Title of Act and Subordinate Legislation made thereunder	CNLR or NL Reg.	Amendment	NL Gazette Date & Page No.
Motorized Snow Vehicles and All-Terrain Vehicles Act			
Motorized Snow Vehicles and All-Terrain Vehicles Regulations (Amdt.)	NLR 1/13	CNLR 1163/96 S.15.1 Added	Jan 11/13 p. 5
Pension Benefits Act, 1997			
Pension Benefits Act Regulations (Amdt.)	NLR 2/13	NLR 114/96 S.41 Amdt.	Jan 11/13 p. 7
Urban and Rural Planning Act, 2000			
Interim Development Regulations (Amdt.)	NLR 3/13	NLR 137/03 Sch. Amdt.	Jan 11/13 p. 9
Water Resources Act			
Notice of Protected Water Supply Area of Wahnahnish Lake, WS-S-0775, Town of Wabush	NLR 4/13	R&S CNLR 724/96	Jan 11/13 p. 11

The Newfoundland and Labrador Gazette is published from the Office of Queen's Printer.

Copy for publication must be received by **Friday, 4:30 p.m.**, seven days before publication date to ensure inclusion in next issue.

Advertisements must be submitted in either PDF format or as a MSWord file. When this is not possible, advertisements must be either typewritten or printed legibly, separate from covering letter. Number of insertions required must be stated and the names of all signing officers typewritten or printed.

Copy may be mailed to the address below, faxed to (709) 729-1900 or emailed to queensprinter@gov.nl.ca.

Advertising rates are available upon request. Subscription rate for *The Newfoundland and Labrador Gazette* is \$125.00 for 52 weeks plus applicable tax (\$131.25). Weekly issues of \$3.00 per copy, plus tax payable in advance.

All cheques, money orders, etc., should be made payable to THE NEWFOUNDLAND EXCHEQUER ACCOUNT and all correspondence should be addressed to: Office of the Queen's Printer, P. O. Box 8700, Ground Floor, East Block, Confederation Building, St. John's, NL A1B 4J6. Telephone (709) 729-3649. Fax: (709) 729-1900.

Web Site: <http://www.gs.gov.nl.ca/printer/index.html>

**Place your order by contacting:
Office of The Queen's Printer
Confederation Building, East Block
St. John's, NL A1B 4J6
Telephone: (709) 729-3649 Fax: (709) 729-1900
email: queensprinter@gov.nl.ca**

**Government Information Product
Publication Rate Mail**

G.S.T. # R107442683

All requests for Subscription and Legislation MUST be prepaid.

**STATUTES OF NEWFOUNDLAND AND LABRADOR
2012**

**First Session, 47th General Assembly
61 Elizabeth II, 2012**

Bill	Act	Chapter
2	<i>Interim Supply Act, 2012</i>	1
	(ASSENTED TO MARCH 21, 2012)	
12	<i>Pharmaceutical Services (Amendment) Act</i>	2
	(ASSENTED TO MARCH 30, 2012)	
16	<i>Supply Act, 2012</i>	3
	(ASSENTED TO JUNE 1, 2012)	
3	<i>Enduring Powers of Attorney (Amendment) Act (To be Proclaimed)</i>	4
* 4	<i>Income Tax (Amendment) Act, 2000 (Considered in force Jan. 1/11)</i>	5
5	<i>Revenue Administration (Amendment) Act</i>	6
6	<i>Consumer Protection and Business Practices (Amendment) Act (In force 3 months after receiving the Royal Assent)</i>	7
7	<i>Provincial Court (Amendment) Act, 1991</i>	8
8	<i>Family Violence Protection (Amendment) Act</i>	9
9	<i>Municipalities (Amendment) Act, 1999 and Urban and Rural Planning (Amendment) Act, 2000</i>	10
10	<i>Interjurisdictional Support Orders (Amendment) Act</i>	11
11	<i>Liquor Control (Amendment) Act</i>	12
13	<i>Schools (Amendment) Act, 1997</i>	13

Bill	Act	Chapter
14	<i>Registration of Deeds (Amendment) Act, 2009</i> (In force Jul. 1/12)	14
15	<i>Student Financial Assistance (Amendment) Act</i> (In force Aug. 1/12)	15
17	<i>Service Animal Act</i>	S-13.02
18	<i>Legal Aid (Amendment) Act</i>	16
19	<i>Highway Traffic (Amendment) Act</i>	17
20	<i>Works, Services and Transportation (Amendment) Act</i> (To be Proclaimed)	18
21	<i>Rail Service (Amendment) Act, 2009</i>	19
22	<i>Aquaculture (Amendment) Act</i>	20
23	<i>Labrador Inuit Land Claims Agreement (Amendment) Act</i> (To be Proclaimed)	21
24	<i>Obsolete Actions Extinguishment Act</i>	22
25	<i>Optometry Act, 2012</i> (In force Aug. 31/112)	O-7.02
26	<i>Consumer Protection and Business Practices (Amendment) Act No. 2</i> (In force Dec. 1/09)	23
27	<i>Personal Services Act</i> (To be Proclaimed)	P-7.2
28	<i>Psychologists (Amendment) Act, 2005</i> (In force Oct. 31/12)	24
29	<i>Access to Information and Protection of Privacy (Amendment) Act</i>	25
30	<i>City of St. John's (Amendment) Act and City of St. John's Municipal Taxation (Amendment) Act</i> (Ss.1, 2, 3, 4, 5, 6, 7, 8, 9, 10, 11, 13, 14, 15 and 17 in force Jan. 1/13)	26
33	<i>Fatalities Investigations (Amendment) Act</i> (To be proclaimed)	27

Bill	Act	Chapter
34	<i>Assessment (Amendment) Act, 2006</i> (In force Sept. 1/12)	28
35	<i>Municipal Affairs (Amendment) Act</i> (In force when SNL2012 cR-8.1 comes into force)	29
36	<i>Regional Service Boards Act, 2012</i>	R-8.1
* 37	<i>Labour Relations (Amendment) Act</i> (S.13 to be Proclaimed)	30
* 38	<i>Public Service Collective Bargaining</i> <i>(Amendment) Act No. 2</i> (S.2 to be Proclaimed)	31
(ASSENTED TO JUNE 27, 2012)		
31	<i>Public Service Collective Bargaining</i> <i>(Amendment) Act</i> (To be proclaimed)	32
40	<i>Health Research Ethics Authority</i> <i>(Amendment) Act, Medical Care</i> <i>Insurance (Amendment) Act, 1999 and</i> <i>Mental Health Care and Treatment</i> <i>(Amendment) Act</i>	33
41	<i>Hearing Aid Practitioners (Amendment) Act</i> (S.1(1) in force when <i>Health</i> <i>Professions Act</i> in force for audiologists)	34
42	<i>Annual Report Amendment Act</i>	35
43	<i>Public Service Pensions (Amendment) Act,</i> <i>1991</i>	36
44	<i>Uniformed Services Pensions Act, 2012</i>	U-4.1
46	<i>Motorized Snow Vehicles and All-Terrain</i> <i>Vehicles (Amendment) Act</i>	37
47	<i>Appointments to Boards, Councils and</i> <i>Tribunals Amendment Act</i>	38
48	<i>Trust and Loan Corporations (Amendment)</i> <i>Act (Considered in force Jul. 1/07)</i>	39
49	<i>Young Persons Offences (Amendment) Act</i>	40

Bill	Act	Chapter
50	<i>Pharmacy Act, 2012</i> (S.17 in force Jun. 30/13 and Part VI in force Sept. 30/13)	P-12.2
51	<i>Pension Benefits (Amendment) Act, 1997</i>	41
53	<i>The Churchill Falls (Labrador) Corporation Limited (Lease) (Amendment) Act, 1961 and Electrical Power Control (Amendment) Act, 1994</i>	42
54	<i>City of St. John's Municipal Taxation (Amendment) Act</i> (In force Jan. 1/13)	43
55	<i>Provincial Offences (Amendment) Act</i>	44
56	<i>Enduring Powers of Attorney (Amendment) (Amendment) Act</i> (In force when SNL2012 c4 is proclaimed)	45
57	<i>Workplace Health, Safety and Compensation (Amendment) Act</i>	46
60	<i>Muskrat Falls Project Land Use and Expropriation Act</i> (To be proclaimed)	M-25
61	<i>Electrical Power Control (Amendment) Act, 1994, Energy Corporation (Amendment) Act and Hydro Corporation (Amendment) Act, 2007</i> (To be proclaimed)	47

(ASSENTED TO DECEMBER 22, 2012)

* Bills amended in Committee of the Whole House.

In researching the law readers should note that the following Statutes of Newfoundland and Labrador, 2012 include amendments to other Statutes as listed below:

Chapter 25	<u><i>Access to Information and Protection of Privacy (Amendment) Act</i></u> <i>Auditor General Act</i>
Chapter 35	<u><i>Annual Report Amendment Act</i></u> <i>Chiropractors Act, 2009</i> <i>Dental Act, 2008</i> <i>Denturists Act, 2005</i> <i>Dietitians Act</i> <i>Dispensing Opticians Act, 2005</i> <i>Health Professions Act</i> <i>Hearing Aid Practitioners Act</i>

	<i>Licensed Practical Nurses Act, 2005</i> <i>Massage Therapy Act, 2005</i> <i>Medical Act, 2011</i> <i>Occupational Therapists Act, 2005</i> <i>Optometry Act, 2012</i> <i>Physiotherapy Act, 2006</i> <i>Psychologists Act, 2005</i> <i>Registered Nurses Act, 2008</i> <i>Social Workers Act</i>
Chapter 38	<u><i>Appointments to Boards, Councils and Tribunals Amendment Act</i></u> <i>Architects Act, 2008</i> <i>Buildings Accessibility Act</i> <i>Certified General Accountants Act, 2008</i> <i>Certified Management Accountants Act</i> <i>Chartered Accountants Act, 2008</i> <i>Embalmers and Funeral Directors Act, 2008</i> <i>Engineers and Geoscientists Act, 2008</i> <i>Financial Services Appeal Board Act</i> <i>Occupational Health and Safety Act</i> <i>Public Accountants Act</i> <i>Public Safety Act</i>
Chapter 4	<u><i>Enduring Powers of Attorney (Amendment) Act -</i></u> <i>(To be proclaimed)</i> <i>Public Trustee Act, 2009</i>
Chapter 27	<u><i>Fatalities Investigations (Amendment) Act -</i></u> (To be proclaimed) <i>Child and Youth Advocate Act</i> <i>Evidence Act</i>
Chapter 11	<u><i>Interjurisdictional Support Orders (Amendment) Act</i></u> <i>Support Orders Enforcement Act</i>
Chapter 30	<u><i>Labour Relations (Amendment) Act -</i></u> (S.13 to be Proclaimed) <i>Fishing Industry Collective Bargaining Act</i>
Chapter 10	<u><i>Municipalities (Amendment) Act, 1999 and Urban and Rural</i></u> <u><i>Planning (Amendment) Act, 2000</i></u> <i>City of Corner Brook Act</i> <i>City of Mount Pearl Act</i> <i>City of St. John's Act</i>
Chapter M-25	<u><i>Muskrat Falls Project Land Use and Expropriation Act -</i></u> <i>(To be proclaimed)</i> <i>Registration of Deeds Act, 2009</i>
Chapter 22	<u><i>Obsolete Actions Extinguishment Act</i></u> <i>Evidence Act</i> <i>Jury Act, 1991</i> <i>Small Claims Act</i> <i>Survival of Actions Act</i>
Chapter O-7.02	<u><i>Optometry Act, 2012 -</i></u> (In force Aug. 31/12) <i>Dispensing Options Act, 2005</i> <i>Highway Traffic Act</i>

Optometry Act, 2004 (Repealed)
Personal Health Information Act
Pharmacy Act
Pharmaceutical Services Act

Chapter P-7.2	<u><i>Personal Services Act</i></u> - (To be Proclaimed) <i>Provincial Offences Ticket Regulations, 1999</i>
Chapter P-12.2	<u><i>Pharmacy Act, 2012</i></u> - (S.17 in force Jun. 30/13 and Part VI in force Sept. 30/13) <i>Medical Act, 2011</i> <i>Personal Health Information Act</i> <i>Pharmaceutical Services Act</i> <i>Pharmacy Act (Repealed)</i> <i>Tobacco Control Act</i>
Chapter 44	<u><i>Provincial Offences (Amendment) Act</i></u> <i>Provincial Offences Regulations, 1999</i>
Chapter R-8.1	<u><i>Regional Service Boards Act, 2012</i></u> <i>Regional Service Boards Act (Repealed)</i>
Chapter S-13.02	<u><i>Service Animal Act</i></u> <i>Blind Persons' Rights Act (Repealed)</i>
Chapter U-4.1	<u><i>Uniformed Services Pensions Act, 2012</i></u> <i>Pensions Funding Act</i> <i>Uniformed Services Pensions Act, 1991 (Repealed)</i>

This list was prepared by the Office of the Legislative Counsel.

Questions or omissions should be brought to the attention of that Office.

Office of the Legislative Counsel
Department of Justice
Government of Newfoundland and Labrador
4th Floor East Block, Confederation Building
P.O. Box 8700
St. John's, NL A1B 4J6
F 729.729.2129
legcounsel@gov.nl.ca
www.assembly.nl.ca/legislation/

The Newfoundland and Labrador Gazette

2013 Publication Dates

Copy for publication must be received before Friday, 4:30-pm, seven days prior to publication date. Advertisements must be submitted in either PDF format or as a MSWord file. When this is not possible, advertisements must be typewritten or printed legibly, separate from covering letter. Number of insertions required must be stated and the names of all signing officers typewritten or printed. Email: queensprinter@gov.nl.ca, fax 709-729-1900 or mail: Office of the Queen's Printer, Bookstore, P. O. Box 8700, Ground Floor, East Confederation Building, St. John's, NL A1B 4J6. For inquiries regarding rates and payment please email or call 709-729-3649.

JANUARY 4/13
Vol 88, No 1

MAY 10/13
Vol 88, No. 19

SEPTEMBER 13/13
Vol 88, No. 37

JANUARY 11/13
Vol 88, No. 2

MAY 17/13
Vol 88, No. 20

SEPTEMBER 20/13
Vol 88, No. 38

JANUARY 18/13
Vol 88, No. 3

MAY 24/13
Vol 88, No. 21

SEPTEMBER 27/13
Vol 88, No. 39

JANUARY 25/13
Vol 88, No. 4

MAY 31/13
Vol 88, No. 22

OCTOBER 4/13
Vol 88, No. 40

FEBRUARY 1/13
Vol 88, No.5

JUNE 7/13
Vol 88, No. 23

OCTOBER 11/13
Vol 88, No. 41

FEBRUARY 8/13
Vol 88, No. 6

JUNE 14/13
Vol 88, No. 24

OCTOBER 18/13
Vol 88, No. 42

FEBRUARY 15/13
Vol 88, No. 7

JUNE 21/13
Vol 88, No. 25

OCTOBER 25/13
Vol 88, No. 43

FEBRUARY 22/13
Vol 88, No. 8

JUNE 28/13
Vol 88, No. 26

NOVEMBER 1/13
Vol 88, No. 44

MARCH 1/13
Vol 88, No. 9

JULY 5/13
Vol 88, No. 27

NOVEMBER 8/13
Vol 88, No. 45

MARCH 8/13
Vol 88, No. 10

JULY 12/13
Vol 88, No. 28

NOVEMBER 15/13
Vol 88, No. 46

MARCH 15/13
Vol 88, No. 11

JULY 19/13
Vol 88, No. 29

NOVEMBER 22/13
Vol 88, No. 47

MARCH 22/13
Vol 88, No. 12

JULY 26/13
Vol 88, No. 30

NOVEMBER 29/13
Vol 88, No. 48

MARCH 28/13
Vol 88, No. 13

AUGUST 2/13
Vol 88, No. 31

DECEMBER 6/13
Vol 88, No. 49

APRIL 5/13
Vol 88, No. 14

AUGUST 9/13
Vol 88, No. 32

DECEMBER 13/13
Vol 88, No. 50

APRIL 12/13
Vol 88, No. 15

AUGUST 16/13
Vol 88, No. 33

DECEMBER 20/13
Vol 88, No. 51

APRIL 19/13
Vol 88, No. 16

AUGUST 23/13
Vol 88, No. 34

DECEMBER 27/13
Vol 88, No. 52

APRIL 26/13
Vol 88, No. 17

AUGUST 30/13
Vol 88, No. 35

MAY 3/13
Vol 88, No. 18

SEPTEMBER 6/13
Vol 88, No. 36

