



THE NEWFOUNDLAND AND LABRADOR GAZETTE

PART I

PUBLISHED BY AUTHORITY

Vol. 88	ST. JOHN'S, FRIDAY, FEBRUARY 22, 2013	No. 8
---------	---------------------------------------	-------

CORPORATIONS ACT

Corporations Act - Section 393

Local Incorporations

For the Month of: December 2012

Date	Number	Company Name			
2012-12-03	68930	COPPER STOP LTD.	2012-12-04	68939	Bay St. George South Historical Society Inc.
2012-12-03	68937	DJT HOLDINGS INC.	2012-12-04	68940	Whole Body Health Limited
2012-12-03	68935	KK MITSHUAPA VENTURES LTD.	2012-12-05	68959	NEWFOUNDLAND FEDERATION OF HUNTERS & ANGLERS INC.
2012-12-03	68929	PLATINUM PRO FITNESS LTD.	2012-12-05	68961	SIOBHAN MOULAND VENTURES INC.
2012-12-03	68932	SOUTHERN FOODS LIMITED	2012-12-05	68941	All Site Construction Ltd.
2012-12-03	68925	68925 NEWFOUNDLAND & LABRADOR CORP	2012-12-05	68942	Seafoam Fisheries Ltd.
2012-12-03	68926	Specialist ROV Services Ltd	2012-12-05	68952	Knox Risk Management Redefined Ltd.
2012-12-04	68943	CAGE TRAINING & RESOURCES, INC.	2012-12-05	68953	Atsanik Nitassinan Scaffolding Ltd.
2012-12-04	68948	GLSJ HOLDINGS LIMITED	2012-12-05	68956	Sevenview Studios Inc.
2012-12-04	68944	JIM-CO DRYWALL LTD.	2012-12-05	68957	Cash Holdings Limited
2012-12-04	68946	POTTLE CONSULTING INC.	2012-12-05	68958	GJ Keats Holdings Inc.
2012-12-04	68927	68927 NEWFOUNDLAND & LABRADOR INC.	2012-12-06	68969	BYRON HOLDINGS INC.
2012-12-04	68928	68928 NEWFOUNDLAND & LABRADOR INC.	2012-12-06	68966	DR. WILLIAM G. POLLETT PROFESSIONAL MEDICAL CORPORATION
2012-12-04	68938	Jolly T Fisheries Inc.	2012-12-06	68967	JEREMY P. SMITH HOLDINGS LTD.
			2012-12-06	68972	LYNKAR HOLDINGS INC.
			2012-12-06	68964	Alta Civil Atlantic Limited
			2012-12-06	68965	GO BEYOND CONSULTING INC.
			2012-12-07	68984	DR. VINCENT HEALE & DR. NOREEN FARDY P.M.C. INC.

THE NEWFOUNDLAND AND LABRADOR GAZETTE
February 22, 2013

2012-12-07	68981	JOHNNY'S LOT & LAWN CARE LTD.	2012-12-17	69038	C-Gas Management Inc.
2012-12-07	68983	WATER'S EDGE RESTAURANT LTD.	2012-12-17	69039	J & C Mechanical Ltd.
2012-12-07	68982	WHITESTONE DEVELOPMENTS INCORPORATED	2012-12-17	69040	Connor Madyson Enterprises Incorporated
2012-12-07	68978	Dr. Bruce Hollett PMC Inc.	2012-12-17	69041	RJC Holdings Inc.
2012-12-10	68988	68988 NEWFOUNDLAND & LABRADOR INC.	2012-12-17	69042	Gerard & Ivy Tobin Holdings Inc.
2012-12-10	68991	BRACE INVESTMENTS LIMITED	2012-12-18	69062	CALLEIGH ENTERPRISES LTD.
2012-12-10	68987	MARY LOU'S CONVENIENCE LTD.	2012-12-18	69065	SKJEI CONSULTING INC.
2012-12-10	68992	NATE HOLDINGS LIMITED	2012-12-18	69043	Windy Acres Trucking Inc.
2012-12-10	68979	Northern Grocery Inc.	2012-12-18	69059	EAST COAST COINS INC.
2012-12-10	68980	Perrin's Marine Services Ltd.	2012-12-18	69060	Dr. A.G. Diedericks Physician PMC Inc.
2012-12-10	68985	68985 NEWFOUNDLAND AND LABRADOR INC.	2012-12-18	69061	Great Whale Coast Corporation
2012-12-10	68986	Whalen Consulting Inc.	2012-12-19	69069	69069 NEWFOUNDLAND AND LABRADOR LTD.
2012-12-11	68997	DR. DHAFIR ALI PROFESSIONAL DENTAL CORPORATION	2012-12-19	69073	69073 NEWFOUNDLAND & LABRADOR INC.
2012-12-11	68993	F. GEOFFREY AYLWARD PLC INC.	2012-12-19	69071	J & S HOLDINGS LTD.
2012-12-11	68998	OSPREY COVE INVESTMENTS LIMITED	2012-12-19	69066	Davis Point Holdings Ltd.
2012-12-11	68994	Coveyduck Management Inc.	2012-12-19	69067	CAIN'S QUEST INC.
2012-12-11	68995	Harbour Asian Restaurant Inc.	2012-12-20	69089	BACCALIEU TRAIL ANIMAL HOSPITAL LIMITED
2012-12-12	69008	FERMEUSE OFFSHORE BASE CORP.	2012-12-20	69087	BRIGHTBOX INDUSTRIES INC.
2012-12-12	69012	GEAR CLOTHING COMPANY INC.	2012-12-20	69085	GORDON AYLWARD PLC INC.
2012-12-12	69009	IAUTO CANADA LTD	2012-12-20	69084	JAR PLANNING SOLUTIONS INC.
2012-12-12	69016	OCL CONSTRUCTION LIMITED	2012-12-20	69090	JOSEPHMAXWELL HOLDINGS INC.
2012-12-12	69011	SAFE & SOUND AUTO TRANSPORT LIMITED	2012-12-20	69083	TURNAROUND, RELIABLE, COORDINATION, SAFE, EXCUTION LTD.
2012-12-12	69010	SUN CITY RESTAURANT LTD	2012-12-20	69076	At Home Property Management Inc.
2012-12-12	68996	GABE Enterprises Ltd.	2012-12-20	69077	Goose Bay Capital Realty Inc.
2012-12-12	69001	Startup Sales Inc	2012-12-20	69078	Global Petroleum Inc.
2012-12-12	69002	Nascopi Mountain Construction Inc	2012-12-20	69079	Florian Properties Inc.
2012-12-12	69003	Phillips Central Shrine Club Inc.	2012-12-20	69080	Fixed Gear Offshore Harvesters Inc.
2012-12-12	69004	Extensive Enterprises Inc.	2012-12-20	69081	69081 NEWFOUNDLAND & LABRADOR INC.
2012-12-12	69005	69005 NEWFOUNDLAND AND LABRADOR INC.	2012-12-20	69082	Rothach Enterprise Inc.
2012-12-13	69021	JMR HOLDINGS INC.	2012-12-21	69108	BCD HOLDINGS INC.
2012-12-13	69022	TODAY'S JEWELLERS INC.	2012-12-21	69098	CRANWOOD HOLDINGS LTD.
2012-12-13	69007	SWYER PHARMACY LTD.	2012-12-21	69104	DEBRA J. FELTHAM PROFESSIONAL CORPORATION
2012-12-13	69017	Boot Shrine Club Inc.	2012-12-21	69102	EXCEED (XCD) CANADA LIMITED
2012-12-13	69018	Synergy Consulting Inc.	2012-12-21	69109	GANDER GLASS PLUS LTD.
2012-12-13	69019	Robert R. Regular PLC Inc.	2012-12-21	69099	JOSEPH TWYNE PLC INC.
2012-12-13	69020	Instyle Decor Inc.	2012-12-21	69101	M & S SIDING INC.
2012-12-14	69032	69032 NEWFOUNDLAND & LABRADOR INCORPORATED	2012-12-21	69105	NEWFOUNDLAND TOYOTA DEALERS ADVERTISING ASSOCIATION INC.
2012-12-14	69036	69036 NEWFOUNDLAND & LABRADOR LTD.	2012-12-21	69103	PVF ENERGY SERVICES INC.
2012-12-14	69037	69037 NEWFOUNDLAND & LABRADOR LTD.	2012-12-21	69106	RENEÉ BUSSEY PROFESSIONAL CORPORATION
2012-12-14	69033	COAST OF BAYS REGIONAL DEVELOPMENT CORPORATION	2012-12-21	69107	TMH MECHANICAL INC.
2012-12-14	69027	EASTERN SHOWERS & GLASS INC.	2012-12-21	69100	TWYNE HOLDINGS INC.
2012-12-14	69029	MY MARIA FISHERIES LTD.	2012-12-21	69094	NORTHERN AUK FISHERIES INC.
2012-12-14	69030	OPEN COMMUNICATIONS INC.	2012-12-21	69095	Jonathan Noel Investments Limited
2012-12-14	69034	PEERLESS CONTRACTING COMPANY LIMITED	2012-12-21	69096	Blackstone Consulting Ltd.
2012-12-14	69024	Property Projects Limited	2012-12-26	69117	DR. BRENDAN HOLLOHAN PROFESSIONAL MEDICAL CORPORATION
2012-12-14	69025	69025 NEWFOUNDLAND AND LABRADOR LIMITED	2012-12-26	69112	DR. CHIDAM YEGAPPAN PROFESSIONAL MEDICAL CORPORATION
2012-12-17	69053	DAH PARTNERSHIP PROFESSIONAL CORPORATION	2012-12-26	69114	DR. DANIEL J. LODGE PROFESSIONAL MEDICAL CORPORATION
2012-12-17	69054	DAH SERVICES PROFESSIONAL CORPORATION	2012-12-26	69113	DR. JENNIFER R. LEONARD PROFESSIONAL MEDICAL CORPORATION
2012-12-17	69049	KENNEDY CLEANING SERVICES INC.	2012-12-26	69097	DR. SEAN F. HAMILTON PROFESSIONAL MEDICAL CORPORATION
2012-12-17	69051	RDK HOLDINGS LIMITED			
2012-12-17	69028	Joe Gedge Holdings 2012 Limited			

THE NEWFOUNDLAND AND LABRADOR GAZETTE

February 22, 2013

2012-12-26	69115	DR. YAHYA ISMAIL (2012) PROFESSIONAL MEDICAL CORPORATION	2012-12-05	66327	UTSHIMAU SALES AND RENTALS INC.
2012-12-26	69116	GANNET CONSTRUCTION LIMITED	2012-12-05	66319	W.L. CONSTRUCTION INC.
2012-12-27	69118	CODROY VALLEY OCEANVIEW SENIORS INC.	2012-12-06	24098	Bourgeois Garage Limited
2012-12-27	69125	CSF HOLDINGS LIMITED	2012-12-07	34882	AIRBOURNE CAFE AND GIFTS LTD.
2012-12-27	69121	RHLM HOLDINGS INC.	2012-12-07	32798	Child Find Newfoundland and Labrador Inc.
2012-12-27	69122	SEPD HOLDINGS LIMITED	2012-12-07	40549	LAYREG HOLDINGS LTD.
2012-12-27	69126	TLVP HOLDINGS LIMITED	2012-12-07	27486	PASADENA EQUIPMENT SERVICES INC.
2012-12-28	69143	69143 NEWFOUNDLAND AND LABRADOR LIMITED	2012-12-10	13132	Central Contractors Limited
2012-12-28	69142	ABB-BRA HOLDINGS LIMITED	2012-12-10	8170	NOROCK ASSOCIATES LIMITED
2012-12-28	69145	CAM GROUP INC.	2012-12-10	65743	SHALOMAR AGRICULTURE REALTY LIMITED
2012-12-28	69134	DIGNITAS HOLDINGS LIMITED	2012-12-11	46711	Best Boy Productions Limited
2012-12-28	69144	DKM HOLDINGS LIMITED	2012-12-11	15984	DECKER'S EXCAVATING LIMITED
2012-12-28	69138	LABRADOR SHOWSTOPPERS DANCE TROUPE INC.	2012-12-11	65563	DEERMIST HOLDINGS INC.
2012-12-28	69135	LONG STRONG PHYSIOTHERAPY INC.	2012-12-11	49798	DR. S.J. DARCY P.M.C. INCORPORATED
2012-12-28	69128	69128 NEWFOUNDLAND AND LABRADOR INC.	2012-12-11	27847	EAST CAN TRANSPORT SERVICES LTD.
2012-12-28	69129	69129 NEWFOUNDLAND AND LABRADOR INC.	2012-12-11	37516	Ser Jen Holdings Ltd.
2012-12-28	69130	DQ2 Solutions Limited	2012-12-11	18901	THE NEWFOUNDLAND AND LABRADOR RETIRED TEACHERS' FOUNDATION
2012-12-28	69131	EBL Consultant Ltd.	2012-12-11	68227	Vinking Marine Enterprises Inc.
2012-12-28	69132	69132 NEWFOUNDLAND & LABRADOR INC.	2012-12-11	68227	Vinking Marine Enterprises Inc.
2012-12-28	69133	NewFound Brokerage & Distributors Inc.	2012-12-12	68709	DENTAM INVESTMENTS LTD.
2012-12-31	69150	TJG HOLDINGS LIMITED	2012-12-12	18910	Little People's Workshop Limited
2012-12-31	69148	Mortgage Mavericks Inc.	2012-12-12	12342	Provincial Carriers Limited
2012-12-31	69149	The Compression Workshop Ltd.	2012-12-12	61683	RED SEAL ROOFING LTD.
Total Incorporations: 155			2012-12-12	36217	THE EMERALD ZONE CORPORATION
<i>Corporations Act - Section 331</i>			2012-12-12	67753	THE ROYAL CANADIAN LEGION, CONCEPTION BAY BRANCH 50 INC.
Local Revivals			2012-12-13	45717	STRATEGIC GROWTH CONSULTANTS PROFESSIONAL CMA CORPORATION
For the Month of: December 2012			2012-12-14	57871	AKER SOLUTIONS ASSET INTEGRITY AND MANAGEMENT CANADA INC.
Date	Number	Company Name	2012-12-14	68564	Frontier Wealth Management Inc.
2012-12-05	31441	East Coast Meats Limited	2012-12-14	14046	LUMBERJACK HOLDINGS LIMITED
2012-12-11	29943	WALKER'S MOTEL LIMITED	2012-12-14	41065	WDI Coffee Incorporated
2012-12-19	39608	KNL Business Advisors Inc.	2012-12-17	59009	59009 NEWFOUNDLAND AND LABRADOR INC.
Total Revivals: 3			2012-12-17	47201	Barker's Construction Limited
<i>Corporations Act - Section 296 and 393</i>			2012-12-17	49298	GEDGE HOLDING COMPANY INC.
Local Continuances			2012-12-17	65124	LEN POWER HOLDINGS LIMITED
For the Month of: December 2012			2012-12-17	28825	LES DENNIS HOLDINGS LIMITED
Date	Number	Company Name	2012-12-17	65414	MATT SPURRELL CONTRACTING LIMITED
2012-12-17	69047	RETAIL HORIZON HOLDINGS LIMITED	2012-12-17	65820	OSPREY RIDGE DEVELOPMENTS LIMITED
2012-12-20	69092	CHEM TECH SERVICES LIMITED	2012-12-17	22727	POWER EQUIPMENT LIMITED
Total Continuances: 2			2012-12-18	62480	BAY D' ESPOIR COMMUNITY YOUTH NETWORK INC.
<i>Corporations Act - Section 286</i>			2012-12-18	48008	David R. Parsons Plumbing & Heating Inc.
Local Amendments			2012-12-18	44509	OFFSHORE CHAIN INSPECTION SERVICES LTD
For the Month of: December 2012			2012-12-18	39571	TEAM PRODUCTS AND SERVICES INC.
Date	Number	Company Name	2012-12-18	51359	TOM GOSINE VENTURES INC
2012-12-03	15465	D. Sportsworld Limited	2012-12-18	24506	Torbay Aeroservices Inc.
2012-12-03	2738	J.M. DELANEY LUMBER LIMITED	2012-12-19	39833	Bonaventure Fisheries Inc.
2012-12-03	60066	KEVIN T. A. PRESTON PLC INC.	2012-12-19	60949	Cal LeGrow Insurance Limited
2012-12-04	51635	CAS HOLDINGS LIMITED	2012-12-19	51769	ECONOMY GLASS LTD.
2012-12-04	55201	DR. AL FELIX PROFESSIONAL MEDICAL CORPORATION	2012-12-19	33411	H & R MECHANICAL SUPPLIES LIMITED
2012-12-05	31441	East Coast Meats Limited			
2012-12-05	52497	SWEET LUMBER ENTERPRISES LTD			

THE NEWFOUNDLAND AND LABRADOR GAZETTE

February 22, 2013

2012-12-19	39608	KNL Business Advisors Inc.
2012-12-19	36770	Labrador Glass & Aluminum Ltd.
2012-12-19	52160	LHG HOLDINGS LTD.
2012-12-19	49505	TMBE LOCK SERVICES LTD.
2012-12-19	44151	Venture IT Group Inc.
2012-12-19	47338	Wood Holdings Limited
2012-12-20	61362	61362 NEWFOUNDLAND AND LABRADOR LIMITED
2012-12-20	63934	63934 NEWFOUNDLAND AND LABRADOR LIMITED
2012-12-20	67949	67949 NEWFOUNDLAND AND LABRADOR LTD.
2012-12-20	17933	CABOT BUILDING SUPPLIES COMPANY (1988) LIMITED
2012-12-20	26401	Coastal Marine Limited
2012-12-20	64690	COASTAL MECHANICAL LIMITED
2012-12-20	65388	COASTAL TRUSS DESIGN LIMITED
2012-12-20	24051	CORMACK MINI MART LIMITED
2012-12-20	53024	D. PAUL ALTHOUSE PLC INC.
2012-12-20	66524	DAVID L HOUNSELL & ASSOCIATES INC
2012-12-20	67801	DR. M. GIBBONS PROFESSIONAL MEDICAL CORPORATION INC.
2012-12-20	53639	EXMOUTH MANOR LTD.
2012-12-20	57092	MODERN HOME EXTERIORS LIMITED
2012-12-20	57847	NEWFOUNDLAND AND LABRADOR SPORTS CENTRE INC.
2012-12-20	29031	Northern Management Services Limited
2012-12-20	65648	PRO CABINET DESIGN LIMITED
2012-12-20	29132	Providence Realty Limited
2012-12-20	18950	Shoal Investments Limited
2012-12-20	48876	SPRINGDALE FOREST RESOURCES INC.
2012-12-21	58963	58963 NEWFOUNDLAND & LABRADOR LTD.
2012-12-21	57271	DWI SERVICES LIMITED
2012-12-21	47798	GLOBAL CONSTRUCTION INCORPORATED
2012-12-24	63912	DR. JABEZ M. NORMAN PROFESSIONAL MEDICAL CORPORATION
2012-12-26	68835	DR. P. REDMOND AND DR. A. KEEFE PROFESSIONAL DENTAL CORPORATION
2012-12-26	57157	ISMAIL HOLDINGS LIMITED
2012-12-27	68649	FRONTIER SUBSEA INC.
2012-12-27	57572	PHOENIX TRANSPORTATION & LOGISTICS INC.
2012-12-28	67090	ALPHA LASER HEALTH INC.
2012-12-28	53890	CATER 2U LIMITED
2012-12-28	44930	CURRACH CONSULTING LIMITED
2012-12-28	37132	Nunak Land Corporation
2012-12-28	64563	O'BRIEN'S TRUCKING LTD.
2012-12-28	28886	TORNGAIT UJAGANNIAVINGIT CORPORATION
2012-12-28	61204	TP BELL HOLDINGS LTD.

Total Amendments: 95

Corporations Act - Section 337

Local Intents to Dissolve

For the Month of: December 2012

Date	Number	Company Name
2012-12-20	20922	Delco Holdings Limited

Total Intents to Dissolve: 1

Corporations Act - Section 335

Local Dissolutions

For the Month of: December 2012

Date	Number	Company Name
2012-12-03	3957	GRAND BANK LUMBER COMPANY LIMITED
2012-12-03	8709	Sea Coast Company Limited
2012-12-04	32107	Administrative Services Inc.
2012-12-04	28038	MAX SQUIRES LTD.
2012-12-04	51536	TRICKETT'S ROOFING INC.
2012-12-05	59814	BANDE HOLDINGS LTD.
2012-12-05	48266	Benton Recreation Committee Inc.
2012-12-05	46348	Crocker's Heating Ltd.
2012-12-05	51171	J & B CONVENIENCE INC.
2012-12-05	36412	TOHERI Enterprises Inc.
2012-12-07	58652	CLARENVILLE CABS (2008) LIMITED
2012-12-07	16630	PETTENS REPAIR SERVICE LIMITED
2012-12-07	23803	TIGHTROPE INC.
2012-12-11	46369	ANGELL'S SAWMILL LTD.
2012-12-12	62428	Global Ocean Dynamics Ltd.
2012-12-12	12342	Provincial Carriers Limited
2012-12-12	52390	ROBBINS PLASTERING & PAINTING LTD.
2012-12-14	41614	BATH VENTURES LTD.
2012-12-14	64179	HOUSE'S BY HOUSE INC
2012-12-18	24274	WHISPERING WINDS FOX FARM INC.
2012-12-19	61732	COMITÉ PROVINCIAL DES JEUX DE L'ACADIE, RÉGION TERRE-NEUVE-ET-LABRADOR INC.
2012-12-20	52185	DR. J.J. PIENAAR PMC INC.
2012-12-20	54260	LABRADOR CUTTING EDGE LIMITED
2012-12-20	52186	PIENAAR HOLDINGS LIMITED
2012-12-20	51442	TAG HOLDINGS INC.
2012-12-21	56397	SeaDog Marine Corporation
2012-12-24	14215	R. & D. Enterprises Limited
2012-12-27	19241	L. & C. Enterprises Limited
2012-12-27	65999	PDSC Enterprises Inc.
2012-12-27	23751	R. SPENCE FISHERIES LTD.
2012-12-28	53916	ClayCorp Enterprises, Inc.
2012-12-28	35555	SEACOM INTERNATIONAL INCORPORATED
2012-12-28	29122	WARREN HOLDINGS LIMITED
2012-12-31	66627	LODERS FISHERIES LTD.
2012-12-31	68820	Swan Safety Services Ltd

Total Dissolutions: 35

Corporations Act - Section 299

Local Discontinuances

For the Month of: December 2012

Date	Number	Company Name
2012-12-13	36535	10489 NEWFOUNDLAND LIMITED
2012-12-13	45749	BOREALIS INDUSTRIES INC.
2012-12-13	68621	DKJ Holdings Limited
2012-12-13	45774	SHARON ROSE HOLDINGS LIMITED
2012-12-13	68622	ZEB Enterprises Limited
2012-12-20	53803	53803 NEWFOUNDLAND & LABRADOR INC.

Total Discontinuances: 6

THE NEWFOUNDLAND AND LABRADOR GAZETTE

February 22, 2013

Corporations Act - Section 294

Local Amalgamations

For the Month of: December 2012

Date	Number	Company Name
2012-12-01	68919	HEALTHY CHOICES (2006) LTD.
From:	68894	68894 NEWFOUNDLAND AND LABRADOR INC.
	53559	HEALTHY CHOICES (2006) LTD.
2012-12-19	69075	VENTURE IT GROUP INC.
From:	46971	Terra IT Consulting Inc.
	44151	Venture IT Group Inc.
2012-12-28	69127	10651 NEWFOUNDLAND INC.
From:	39329	10651 Newfoundland Inc.
	56067	56067 NEWFOUNDLAND & LABRADOR INC.
2012-12-31	69159	BONAVENTURE FISHERIES INC.
From:	39833	Bonaventure Fisheries Inc.
	41405	Grand Mariner Inc.
	45202	Majestic Mariner Inc.
2012-12-31	69158	CLAIR'S HOLDINGS INC.
From:	35708	CCEH HOLDINGS LTD.
	22519	CLAIR'S HOLDINGS INC.
2012-12-31	69152	COLLINS' AMBULANCE SERVICE LTD.
From:	64039	COLLINS' AMBULANCE SERVICE LTD.
	46155	Kearney's Ambulance Service Ltd.
2012-12-31	69156	FROZEN FOODS, LIMITED
From:	32900	10297 Newfoundland Limited
	32901	10298 Newfoundland Limited
	31441	East Coast Meats Limited
	2747	FROZEN FOODS, LIMITED
	30514	SJB Holdings Limited
2012-12-31	69157	HUMBER MOTORS LIMITED
From:	34565	D.Y. Holdings Limited
	2646	HUMBER MOTORS LIMITED
2012-12-31	69155	IKM TESTING (CANADA) LIMITED
From:	69092	CHEM TECH SERVICES LIMITED
	43892	IKM Testing (Canada) Limited
2012-12-31	69151	MAGIC INVESTMENTS CORPORATION
From:	39608	KNL Business Advisors Inc.
	40898	Magic Investments Corporation
2012-12-31	69154	PLUTO INVESTMENTS INC.
From:	25039	LEGACY INVESTMENTS LIMITED
	64223	NAIROBI INVESTMENTS INC.
	27327	PLUTO INVESTMENTS INC.
2012-12-31	69153	TOM GOSINE VENTURES INC
From:	56802	JDL ENTERPRISES INC.
	51359	TOM GOSINE VENTURES INC

Total Amalgamations: 12

Corporations Act - Section 286

Local Name Changes

For the Month of: December 2012

Number	Company Name
65743	SHALOMAR AGRICULTURE REALTY LIMITED
2012-12-10	From: 65743 NEWFOUNDLAND AND LABRADOR LIMITED
67753	THE ROYAL CANADIAN LEGION, CONCEPTION BAY BRANCH 50 INC.
2012-12-12	From: ROYAL CANADIAN LEGION, BRANCH 50, BUILDING RESTORATION COMMITTEE INC.
57871	AKER SOLUTIONS ASSET INTEGRITY AND MANAGEMENT CANADA INC.
2012-12-14	From: THRUM ENERGY INC.
65820	OSPREY RIDGE DEVELOPMENTS LIMITED
2012-12-17	From: 65820 NEWFOUNDLAND AND LABRADOR INC.
67801	DR. M. GIBBONS PROFESSIONAL MEDICAL CORPORATION INC.
2012-12-20	From: DR. MAUREEN GIBBONS PROFESSIONAL MEDICAL CORPORATION INC.
57157	ISMAIL HOLDINGS LIMITED
2012-12-26	From: DR. YAHYA ISMAIL PROFESSIONAL MEDICAL CORPORATION
67090	ALPHA LASER HEALTH INC.
2012-12-28	From: Alpha Laser Inc.

Total Name Changes: 7

Corporations Act - Section 443

Extra-Provincial Registrations

For the Month of: December 2012

Date	Number	Company Name
2012-12-03	68934	SGI MERCHANDISING INC.
2012-12-03	68933	SQI MERCHANDISING INC.
2012-12-03	68931	TECHNEL ENGINEERING INC.
2012-12-04	68945	8279225 CANADA LIMITED
2012-12-04	68949	BLUE RIBBON FUND MANAGEMENT LTD.
2012-12-04	68954	CAPITAL INTERNATIONAL ASSET MANAGEMENT (CANADA), INC.
2012-12-04	68951	EDGEPOINT INVESTMENT GROUP INC.
2012-12-04	68955	HAYWARD BAKER CANADA LTD.
2012-12-04	68950	PIER 21 ASSET MANAGEMENT INC./ GESTION D'ACTIFS PIER 21 INC.
2012-12-05	68962	A.S.R. REFTECH INC.
2012-12-05	68963	CONNOR, CLARK & LUNN FUNDS INC.
2012-12-05	68960	HARBOUR AUTHORITY OF SEAL COVE

THE NEWFOUNDLAND AND LABRADOR GAZETTE

February 22, 2013

2012-12-06	68974	8134570 CANADA INC.	2012-12-27	69124	FT PORTFOLIOS CANADA CO.
2012-12-06	68968	8344248 CANADA INC.			SOCIÉTÉ DE GESTION DE
2012-12-06	68977	CANADA DOMINION RESOURCES			PORTEFEUILLES FT CANADA
		2013 CORPORATION	2012-12-27	69123	GREEN PERSONNEL
2012-12-06	68973	CMP 2013 CORPORATION			SERVICES INC.
2012-12-06	68970	EXECUTIVE PROTECTION	2012-12-27	69119	SCOTIA MANAGED COMPANIES
		SERVICES GROUP INC.			ADMINISTRATION INC.
2012-12-06	68976	HPC MANAGEMENT INC.	2012-12-28	69140	8008922 CANADA INC.
2012-12-06	68971	IBI GP LIMITED	2012-12-28	69147	ALMIRALL LIMITED
2012-12-06	68975	TEAM BEACHBODY	2012-12-28	69139	EXCEL FUNDS
		CANADA LTD.			MANAGEMENT INC.
2012-12-10	68989	BURGER KING CANADA	2012-12-28	69136	GUARDIAN ETHICAL
		HOLDINGS INC./			MANAGEMENT INC.
		PLACEMENTS BURGER KING	2012-12-28	69141	MAN INVESTMENTS CANADA
		CANADA INC.			CORP.
2012-12-11	69000	FAGIOLI S.P.A.	2012-12-28	69137	MARATHON MORTGAGE CORP.
2012-12-11	68999	K & J FAMILY HOLDINGS LTD.	2012-12-28	69146	PURPOSE INVESTMENTS INC.
2012-12-12	69015	FASHION BIZ WHOLESALE			
		(CAN) LTD.			
2012-12-12	69013	FIRST ASSET INVESTMENT			
		MANAGEMENT INC.			
2012-12-12	69006	ING DIRECT ASSET			
		MANAGEMENT LIMITED/			
		ING DIRECT GESTION DE			
		PLACEMENTS LIMITÉE			
2012-12-12	69014	KENSINGTON CAPITAL			
		ADVISORS INC.			
2012-12-13	69023	0954428 B.C. LTD.			
2012-12-17	69058	ALIGNED CAPITAL			
		PARTNERS INC.			
2012-12-17	69044	CONNOR, CLARK & LUNN	2012-12-06	From:	GE CANADA REAL ESTATE EAST
		CAPITAL MARKETS INC.			NOMINEE COMPANY/
2012-12-17	69056	FAIRCOURT ASSET			SOCIÉTÉ GE CANADA
		MANAGEMENT INC.			IMMOBILIER-NOMINATAIRE
2012-12-17	69048	GESTION DE PORTEFEUILLE			POUR LA RÉGION DE L'EST
		LANDRY INC.			GE CANADA REAL ESTATE
		LANDRY INVESTMENT			EQUITY BUSINESS PROPERTY
		MANAGEMENT INC.			HOLDING COMPANY/
2012-12-17	69046	HARVEST PORTFOLIOS			SOCIÉTÉ DE PORTEFEUILLE
		GROUP INC.			IMMOBILIERE D'ENTREPRISE GE
2012-12-17	69050	HILCO CAPITAL (CANADA) ULC			CANADA
2012-12-17	69045	NORTHERN CAPITAL			
		ASSOCIATES HOLDINGS			
		CANADA IV ULC			
2012-12-17	69055	OPRON CONSTRUCTION INC.			
2012-12-17	69057	STUDENT CAR SHARE INC.			
2012-12-18	69064	MAWER INVESTMENT			
		MANAGEMENT LTD.			
2012-12-18	69063	TRINET EMPLOYER GROUP			
		CANADA, INC.			
2012-12-19	69070	COUNSEL PORTFOLIO			
		SERVICES INC.			
2012-12-19	69068	DESTINY HOLDINGS LIMITED			
2012-12-19	69074	OCEANROCK INVESTMENTS INC.			
		PLACEMENTS OCEANROCK INC.			
2012-12-19	69072	PROPEL CAPITAL CORPORATION			
2012-12-20	69091	CANSO FUND			
		MANAGEMENT LTD.			
2012-12-20	69088	HARBOUR AUTHORITY			
		OF DILDO			
2012-12-20	69093	LYSANDER FUNDS LIMITED			
2012-12-21	69111	ELECTRONIC PRODUCTS			
		RECYCLING ASSOCIATION			
		ASSOCIATION POUR LE			
		RECYCLAGE DES PRODUITS			
		ÉLECTRONIQUES			
2012-12-21	69110	NICOLA WEALTH			
		MANAGEMENT LTD.			
Total Registrations: 58					
<i>Corporations Act - Section 451</i>					
Extra-Provincial Name Changes					
For the Month of: December 2012					
			Number		Company Name
			58198		GE CANADA REAL ESTATE EAST
					NOMINEE COMPANY/
					SOCIÉTÉ GE CANADA
					IMMOBILIER-NOMINATAIRE
					POUR LA RÉGION DE L'EST
			2012-12-06	From:	GE CANADA REAL ESTATE
					EQUITY BUSINESS PROPERTY
					HOLDING COMPANY/
					SOCIÉTÉ DE PORTEFEUILLE
					IMMOBILIERE D'ENTREPRISE GE
					CANADA
			69052		AFIMAC CANADA INC.
			2012-12-17	From:	AFI INTERNATIONAL
					GROUP INC.
			62939		HALLIBURTON PARTNERS
					CANADA ULC
			2012-12-21	From:	HALLIBURTON PARTNERS
					CANADA INC.
			62821		SACKVILLE INSURANCE
					INCORPORATED
			2012-12-21	From:	SACKVILLE INSURANCE
					AGENCY INCORPORATED
Total Name Changes: 4					
<i>Corporations Act - Section 294</i>					
Extra-Provincial Registrations for Amalgamation					
For the Month of: December 2012					
			Date	Number	Company Name
			2012-12-03	68936	GROUPE DES MÉDIAS
					TRANSCONTINENTAL DE LA
					NOUVELLE-ÉCOSSE INC.
					TRANSCONTINENTAL NOVA
					SCOTIA MEDIA GROUP INC.
			From:	3984D	TRANSCONTINENTAL ATLANTIC
					MEDIA GROUP INC. GROUPE DES
					MÉDIAS TRANSCONTINENTAL
					DES PROVINCES DE
					L'ATLANTIQUE INC./

2012-12-04	68947	TYCO HEALTHCARE GROUP CANADA ULC
From:	64241	TYCO HEALTHCARE GROUP CANADA ULC
2012-12-10	68990	BURGER KING RESTAURANTS OF CANADA INC. RESTAURANTS BURGER KING DU CANADA INC.
From:	1416F	BURGER KING RESTAURANTS OF CANADA INC. RESTAURANTS BURGER KING DU CANADA INC.
2012-12-13	69026	HUSSMANN CANADA INC.
From:	66043	IR CLIMATE SOLUTIONS CANADA INC.
2012-12-14	69031	MORGUARD CORPORATION CORPORATION MORGUARD
From:	59911	MORGUARD CORPORATION CORPORATION MORGUARD
2012-12-14	69035	MORGUARD CORPORATION CORPORATION MORGUARD
From:	69031	MORGUARD CORPORATION CORPORATION MORGUARD
2012-12-17	69052	AFIMAC CANADA INC.
From:	6071F	AFI INTERNATIONAL GROUP INC.
2012-12-20	69086	MARRET ASSET MANAGEMENT INC./MARRET GESTION D'ACTIFS INC.
From:	63461	MARRET ASSET MANAGEMENT INC.
2012-12-27	69120	DIAGEO CANADA INC.
From:	51847	DIAGEO CANADA INC.

Total Registrations for Amalgamation: 9

SERVICE NL
Dean Doyle, Registrar of Companies

Feb 22

CORRECTION NOTICE

Inadvertently omitted from publication on page 29 of Volume 88, Number 4, January 25th, 2013 edition of *The Newfoundland and Labrador Gazette*, was notice of a new local incorporation of NG Associates Inc., Corporation # 68732 with an incorporation date of November 2, 2012.

Published on page 160 of Volume 84, Number 14, April 3, 2009 edition of *The Newfoundland and Labrador Gazette*, Extra-Provincial Registrations for Amalgamation for the Month of February 2009 inadvertently omitted from publication that AECOM CANADA LTD., Registration # 59664 was one of the registered amalgamating corporations.

SERVICE NL
Dean Doyle, Registrar of Companies

Feb 22

MINERAL ACT

NOTICE

Published in accordance with section 62 of CNLR 1143/96 under the *Mineral Act*, cM-12, RSNL 1990 as amended.

Mineral rights to the following mineral licenses have reverted to the Crown:

Mineral License	006653M
Held by	Nfld. Aggregates (1991) Ltd.
Situate near	St. Georges, Western NL
On map sheet	12B/08

Mineral License	017731M
Held by	High Tide Resources Inc.
Situate near	Dildo Run, Central NL
On map sheet	02E/10

A portion of license	010217M
Held by	Teck Resources Limited
Situate near	Burnt Pond, Central NL
On map sheet	12A/09

more particularly described in an application on file at Department of Natural Resources.

Mineral License	019537M 019538M
Held by	7980736 Canada Inc.
Situate near	Red Indian Lake, Central NL
On map sheet	12A/15

A portion of license	019686M
Held by	7980736 Canada Inc.
Situate near	Red Indian Lake, Central NL
On map sheet	12A/15

more particularly described in an application on file at Department of Natural Resources.

Mineral License	020128M
Held by	Mega Uranium Ltd.
Situate near	Jigger Tickle
On map sheet	13J/16

Mineral License	020124M 020125M
Held by	Mega Uranium Ltd.
Situate near	Abliuk Bight
On map sheet	13I/11

Mineral License	015548M
Held by	Eagleridge Minerals Ltd.
Situate near	Baie Verte Area, Baie Verte Peninsula
On map sheet	12H/16

Mineral License	019572M
Held by	Capella Resources Ltd.
Situate near	Wilson Lake
On map sheet	13E/07

Mineral License	016668M
Held by	Eagleridge Minerals Ltd.

Situate near	Baie Verte Area, Baie Verte Peninsula
On map sheet	12H/16
Mineral License	016674M
Held by	Pike, Lloyd
Situate near	Bunyans Cove, Eastern NL
On map sheet	02C/05
Mineral License	016675M
Held by	Pike, Lloyd
Situate near	Bunyans Cove, Eastern NL
On map sheet	02C/05
Mineral License	016678M
Held by	Malhi, Kal
Situate near	Grand Le Pierre Area, Fortune Bay
On map sheet	01M/10, 01M/15
Mineral License	016680M
Held by	Lannon, Rosalind
Situate near	Exploits River, Central NL
On map sheet	12A/16
A portion of license	017492M
Held by	Marathon Gold Corporation
Situate near	Princess Lake Area, Central NL
On map sheet	12A/04, 12B/01
more particularly described in an application on file at Department of Natural Resources	
Mineral License	018059M
Held by	Northridge Ventures Inc.
Situate near	Paradise River
On map sheet	13H/05
Mineral License	018061M
Held by	Northridge Ventures Inc.
Situate near	Paradise River
On map sheet	13H/05
Mineral License	018063M
Held by	Noel, E. Michele
Situate near	Burnt Lake, Central NL
On map sheet	02E/07
Mineral License	018064M
Held by	Noel, E. Michele
Situate near	Third Pond, Central NL
On map sheet	02E/02
Mineral License	018085M
Held by	Noel, E. Michele
Situate near	Southwest Gander River, Central NL
On map sheet	02D/06, 02D/11
Mineral License	019312M
Held by	High Tide Resources Inc.
Situate near	Dunnage Island, Central NL
On map sheet	02E/10
Mineral License	019313M
Held by	High Tide Resources Inc.
Situate near	Dildo Run Area, Central NL
On map sheet	02E/10

Mineral License	019314M
Held by	High Tide Resources Inc.
Situate near	Dildo Run Area, Central NL
On map sheet	02E/10
Mineral License	019521M
Held by	McDonald, Martin
Situate near	Great Rattling Brook, Central NL
On map sheet	02D/12, 02D/13
Mineral License	019522M
Held by	McDonald, Martin
Situate near	Great Rattling Brook, Central NL
On map sheet	02D/12, 02D/13

The lands covered by this notice except for the lands within Exempt Mineral Lands, the Exempt Mineral Lands being described in CNLR 1143/96 and NLR 71/98, 104/98, 97/00, 36/01, 31/04, 78/06, 8/08, 28/09 and 5/13 and outlined on 1:50 000 scale digital maps maintained by the Department of Natural Resources, will be open for staking after the hour of 9:00 a.m. on the 32nd clear day after the date of this publication.

DEPARTMENT OF NATURAL RESOURCES
JUSTIN LAKE
Manager - Mineral Rights

File #s 774:3472, 4685, 5662, 5808, 5869, 9227, 9237,
9984, 9985;

775:0522, 0526, 0527, 0530, 0532, 0996, 1447,
1449, 1451, 1452, 1466, 2566, 2567, 2568,
2737, 2738

Feb 22

URBAN AND RURAL PLANNING ACT

NOTICE OF REGISTRATION

ST. JOHN'S DEVELOPMENT REGULATIONS

AMENDMENT NO. 561 2013

TAKE NOTICE that the ST. JOHN'S Development Regulations Amendment Number 561, 2013 adopted on the 28th day of January, 2013, has been registered by the Minister of Municipal Affairs.

In general terms, the purpose of Development Regulations Amendment Number 561, 2013 is to rezone land on the south side of Scout's Place from the Rural Residential (RR) Zone to the Rural Residential Infill (RRI) Zone.

This amendment comes into effect on the date that this notice is printed in *The Newfoundland and Labrador Gazette*. Anyone who wishes to inspect a copy of the amendment may do so at the Department of Planning, 3rd Floor, St. John's City Hall during regular business hours.

CITY OF ST. JOHN'S
Cliff Johnston, MCIP - Director of Planning

Feb 22

LANDS ACT

NOTICE OF INTENT

Lands Act, c36, SNL 1991, as amended

NOTICE IS HEREBY given that ERIC K. YATES SURVEYS LTD., of Lewisporte, NL, intends to apply to the Department of Environment and Conservation, two months from the publication, to acquire title, pursuant to Section 7(2) of the said Act, that piece of Crown Land situated within fifteen (15) metres of the waters of Lewisporte Harbour, in the Electoral District of Lewisporte for the purpose of a boathouse, wharfage/commercial..

The land is described as follows:

*Bounded on the North by a Shoreline Reserve,
for a distance of about 10 metres;
Bounded on the East by Lewisporte Harbour,
for a distance of about 60 metres;
Bounded on the South by a Shoreline Reserve,
for a distance of about 10 metres;
Bounded on the West by 207-209
Main Street (Private Land), Lewisporte
for a distance of about 60 metres;
and containing an area of
approximately 600 square metres.*

Any person wishing to object to the application must file the objection, in writing, within one month from the publication of this Notice, with reasons for it, in the Minister of Environment and Conservation, and mail to the nearest Regional Lands Office:

c/o Eastern Regional Lands Office, P.O. Box 8700, Howley Building, Higgins Line, St. John's, NL, A1B 4J6.

c/o Central Regional Lands Office, P.O. Box 2222, Gander, NL, A1V 1L7.

c/o Western Regional Lands Office, P.O. Box 2006, Sir Richard Squires Building, Corner Brook, NL, A2H 6J8.

c/o Labrador Regional Lands Office, P.O. Box 3014, Station "B", Happy Valley-Goose Bay, NL, A0P 1E0.

For further information on the proposed application please contact: E. K. YATES SURVEYS LIMITED, Telephone Number (709) 535-8747.

Feb 22

MECHANICS' LIEN ACT

NOTICE OF PUBLIC AUCTION

TAKE NOTICE that pursuant to Section 45 of the *Mechanics' Lien Act*, RSNL1990, cM-3, Mr. Darrell Melvin, being indebted to CYCLE CITY AND RECREATION LTD., in the amount of \$7,102.80 for repairs made to a 2006 Arctic Cat Bearcat 660 wide track, Serial Number: 4UF06SNW06T121795, a public auction

will be held at the premises of Fitzpatrick's Auctioneering situate at 7 Mullaly Street, St. John's, NL, A1B 4M8, on Saturday, the 2nd day of March, 2013, to auction said Arctic Cat 660WT Bearcat.

CYCLE CITY AND RECREATION LTD.
Gerry Keeping

Feb 22

QUIETING OF TITLES ACT

2013 01G No. 0758 IN THE SUPREME COURT OF NEWFOUNDLAND AND LABRADOR TRIAL DIVISION (GENERAL)

IN THE MATTER of JAMES BROPHY, a resident of the Province of Newfoundland and Labrador;

AND

IN THE MATTER OF the *Quieting of Titles Act*, cQ-3, RSNL1990, and amendments thereto;

AND

IN THE MATTER OF that piece or parcel of land being at Brophy's Road, in the Town of Holyrood, in the Province of Newfoundland and Labrador.

NOTICE of Application under the *Quieting of Titles Act*, cQ-3, RSNL1990, and amendments thereto (the "Act"):

NOTICE IS HEREBY GIVEN to all parties that JAMES BROPHY, of the Town of Torbay, in the Province of Newfoundland and Labrador, has applied to the Supreme Court of Newfoundland and Labrador – Trial Division (General), to have the title to ALL THAT piece or parcel of land situate and being at Brophy's Road, in the Town of Holyrood, in the Province of Newfoundland and Labrador, Canada, and as more particularly described in the Schedule hereto annexed and marked "A", of which the said JAMES BROPHY claims of his own behalf to be the owner investigated and he request a declaration that the said JAMES BROPHY is the legal, beneficial, and absolute owner in possession and that the said Court having ordered that Notice of the said Application be published as required by the above named Act.

All persons having a claim adverse to this title claimed by the said JAMES BROPHY shall file in the Registry of the Supreme Court of Newfoundland and Labrador - Trial Division (General), at the Court House, Duckworth Street, St. John's, Newfoundland and Labrador, Canada, A1C 5M3, particulars of such adverse claim and serve same together with an Affidavit verifying same, on the undersigned solicitors for the Applicant on or before the 20th day of March, 2013, after which date no party having any claim shall be permitted to file the same or to be heard except by special leave of the Court and subject to conditions the Court may deem just.

All such adverse claims shall then be investigated in such manner as the said Supreme Court may direct.

DATED at the City of St. John's, in the Province of Newfoundland and Labrador this 13th day of February, 2013.

SMYTH WOODLAND DEL RIZZO & LEDREW
Solicitors for the Applicant
PER: D. Gordon Woodland

ADDRESS FOR SERVICE:
Old Queen's College, Suite 100
16 Forest Road
St. John's, NL A1C 2B9

SCHEDULE "A"

Parcel "A"

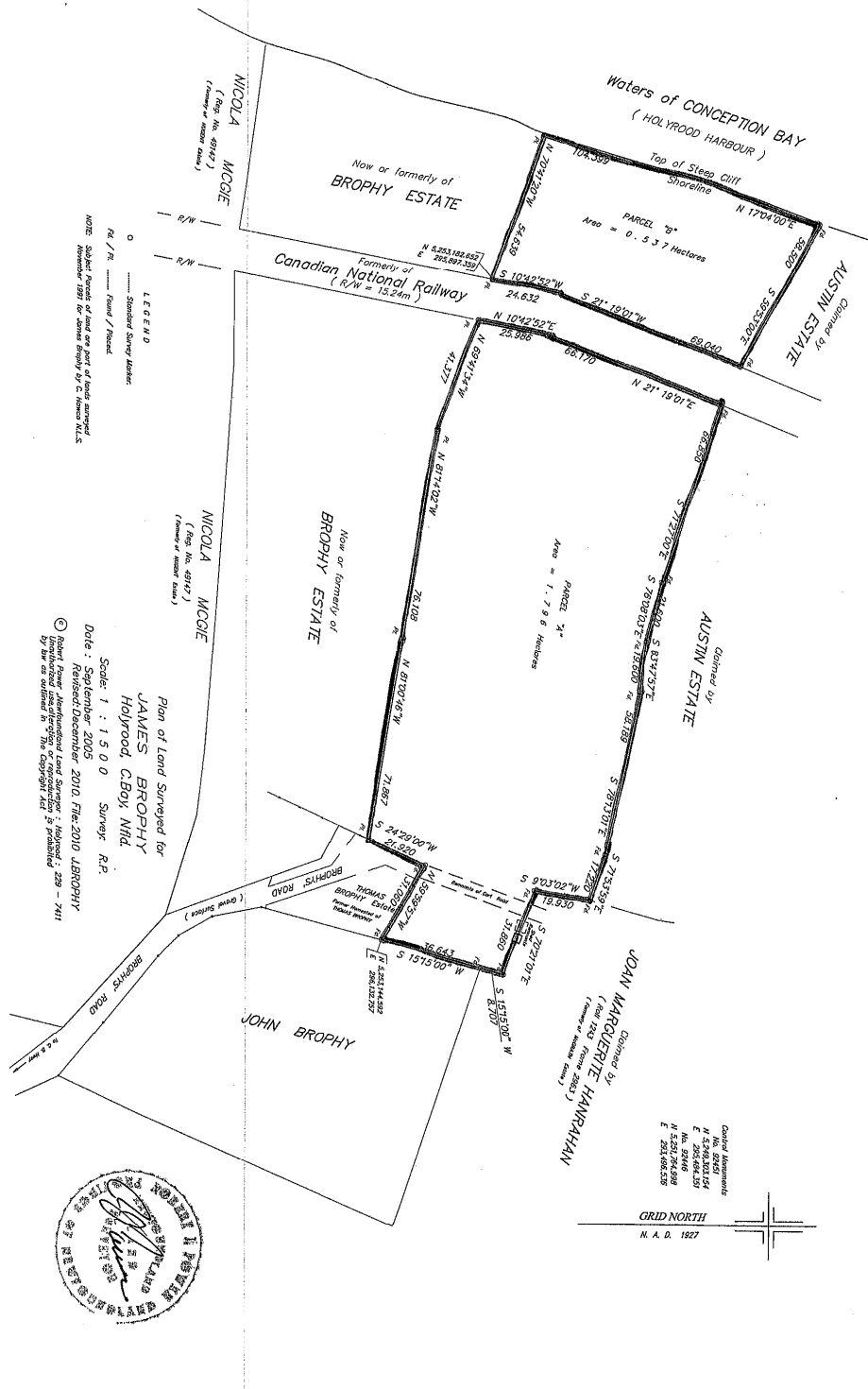
ALL THAT piece or parcel of land situate and being West of Brophy's Road at Holyrood in the Electoral District of Harbour Main in the Province of Newfoundland and Labrador and being abutted and bounded as follows; THAT IS TO SAY; By a line beginning at a point said point being a Standard Survey Marker found on the West Boundary line of land of John Brophy at the Northeast angle of land of the Estate of Thomas Brophy and having coordinates of N 5,253,144.592 and E 296,132.757 metres of the Modified Transverse Mercator Projection for the Province of Newfoundland and Labrador; Thence running by land of the Estate of Thomas Brophy North fifty nine degrees fifty nine minutes fifty seven seconds West a distance of thirty one decimal zero six zero metres; Thence following the existing Northerly extremity of Brophy's Road South twenty four degrees twenty nine minutes zero seconds West a distance of twenty one decimal nine two zero metres; Thence running by land now or formerly of the Brophy Estate North eighty one degrees zero minutes forty six seconds West a distance of seventy one decimal eight six seven metres; Thence North eighty one degrees fourteen minutes two seconds West a distance of seventy six decimal one zero eight metres; Thence North sixty nine degrees forty one minutes thirty four seconds West a distance of forty one decimal three seven seven metres; Thence running along the Easterly limit of the former Canadian National Railway Corridor North ten degrees forty two minutes fifty two seconds East a distance of twenty five decimal nine eight six metres; Thence North twenty one degrees nineteen minutes one second East a distance of sixty six decimal one seven zero metres; Thence running by land claimed by the Austin Estate South seventy one degrees twenty seven minutes zero seconds East a distance of sixty six decimal eight five zero metres; Thence South seventy six degrees eight minutes three seconds East a distance of twenty one decimal six zero zero metres; Thence South seventy six degrees eight minutes three seconds East a distance of twenty one decimal six zero zero metres; Thence South eighty three degrees forty seven minutes fifty seven seconds East a distance of nineteen decimal six zero zero metres; Thence South seventy eight degrees thirteen minutes one second East a distance of fifty

eight decimal one eight nine metres; Thence South seventy one degrees fifty three minutes fifty nine seconds East a distance of seventeen decimal two two zero metres; Thence running by land claimed by Joan Marguerite Hanrahan South nine degrees three minutes two seconds West a distance of nineteen decimal nine three zero metres; Thence South seventy degrees twenty one minutes one second East a distance of thirty one decimal eight six zero metres; Thence South fifteen degrees fifteen minutes zero seconds West a distance of eight decimal seven zero seven metres; Thence running by land of John Brophy South fifteen degrees fifteen minutes zero seconds West a distance of thirty six decimal six four three metres; more or less to the point of beginning and containing an area of 1.796 hectares and being more completely described and delineated and referred to as Parcel "A" on the drawing hereto attached. All bearings refer to Grid North N.A.D.1927.

SCHEDULE "A"

Parcel "B"

ALL THAT piece or parcel of land situate and being West of Brophy's Road at Holyrood in the Electoral District of Harbour Main in the Province of Newfoundland and Labrador and being abutted and bounded as follows; THAT IS TO SAY; By a line beginning at a point said point being a Standard Survey Marker found on the West Limit of the former Canadian National Railway Corridor at the Northeast angle of land now or formerly of the Brophy Estate and having coordinates of N 5,253,182.652 and E 295,897.359 metres of the Modified Transverse Mercator Projection for the Province of Newfoundland and Labrador; Thence running by land now or formerly of the Brophy Estate North seventy degrees forty one minutes twenty seconds West a distance of fifty four decimal six three nine metres; Thence running along the Shoreline of Holyrood Harbour, following the top of a steep cliff, to a point distant one hundred and four decimal three nine nine metres on a bearing of North seventeen degrees four minutes zero seconds East; Thence running by land claimed by the Austin Estate South fifty nine degrees fifty three minutes zero seconds East a distance of fifty eight decimal five zero zero metres; Thence following the West limit of the former Canadian National Railway Corridor South twenty one degrees nineteen minutes one second West a distance of sixty nine decimal zero four zero metres; Thence South ten degrees forty two minutes fifty two seconds West a distance of twenty four decimal six three two metres; more or less to the point of beginning and containing an area of 0.537 hectares and being more completely described and delineated and referred to as Parcel "B" on the drawing hereto attached. All bearings refer to Grid North N.A.D.1927.



TRUSTEE ACT

ESTATE NOTICE

IN THE MATTER OF the Estate and Effects of late JANET BELINDA BROMLEY, of the Town of Durrell, in the Province of Newfoundland and Labrador, Retired Person, Deceased.

All persons claiming to be creditors of or who have any claims or demands upon or affecting the Estate of JANET BELINDA BROMLEY, the aforesaid deceased, who died at the Town of Lewisporte, in the Province of Newfoundland and Labrador on or about the 28th day of May, 2001, are hereby requested to send particulars thereof in writing, duly attested, to the undersigned Solicitor for the Executrix of the Estate on or before the 27th day of February, 2013 after which date the Executrix will proceed to distribute the said Estate having regard only to the claims of which she shall then have had notice.

DATED at the Town of Gander, Newfoundland and Labrador, this 3rd day of February, 2013.

BONNELL LAW
Solicitor for the Executrix
PER: R. Archibald Bonnell

ADDRESS FOR SERVICE:
P.O. Box 563
218 Airport Boulevard
Gander, NL A1V 2E1

Tel: (709) 651-4949
Fax: (709) 651-4951

Feb 15 & 22



THE NEWFOUNDLAND AND LABRADOR GAZETTE

PART II

SUBORDINATE LEGISLATION

FILED UNDER THE STATUTES AND SUBORDINATE LEGISLATION ACT

Vol. 88

ST. JOHN'S, FRIDAY, FEBRUARY 22, 2013

No. 8

NEWFOUNDLAND AND LABRADOR REGULATION

NLR 24/13



NEWFOUNDLAND AND LABRADOR REGULATION 24/13

Western Regional Service Board Regulations
under the
Regional Service Boards Act, 2012

(Filed February 19, 2013)

Under the authority of section 19 of the *Regional Service Boards Act, 2012*, I make the following regulations.

Dated at St. John's, February 15, 2013.

Kevin O'Brien
Minister of Municipal Affairs

REGULATIONS

Analysis

- | | |
|------------------------|--------------------------|
| 1. Short title | 4. Recovery of debt |
| 2. Definition | 5. Withdrawal of service |
| 3. Prescribed services | |

Short title **1.** These regulations may be cited as the *Western Regional Service Board Regulations*.

Definition **2.** In these regulations, "board" means the Western Regional Service Board.

Prescribed services **3.** The board has the power to construct, acquire, maintain and operate a waste management system within the Western Region.

Recovery of debt

4. An amount owing under section 24 of the Act is a debt due to the board and the board may recover it by civil action in a court.

Withdrawal of
service

5. The board may stop providing a service to a municipal authority, user or other person where the municipal authority, user or other person fails to comply with a policy of the board respecting the service.

©Queen's Printer

Index

PART I

Corporations Act – Notices	63
Lands Act – Notice	71
Mechanics' Lien Act – Notice	71
Mineral Act – Notice	69
Quieting of Titles Act – Notice	71
Urban and Rural Planning Act, 2000 – Notice	70
Trustee Act – Notice	74

PART II

CONTINUING INDEX OF SUBORDINATE LEGISLATION

Title of Act and Subordinate Legislation made thereunder	CNLR or NL Reg.	Amendment	NL Gazette Date & Page No.
Regional Service Boards Act, 2012			
Western Regional Service Board Regulations	NLR 24/13	New	Feb 22/13 p. 93

The Newfoundland and Labrador Gazette is published from the Office of Queen's Printer.

Copy for publication must be received by **Friday, 4:30 p.m.**, seven days before publication date to ensure inclusion in next issue.

Advertisements must be submitted in either PDF format or as a MSWord file. When this is not possible, advertisements must be either typewritten or printed legibly, separate from covering letter. Number of insertions required must be stated and the names of all signing officers typewritten or printed.

Copy may be mailed to the address below, faxed to (709) 729-1900 or emailed to queensprinter@gov.nl.ca.

Advertising rates are available upon request. Subscription rate for *The Newfoundland and Labrador Gazette* is \$125.00 for 52 weeks plus applicable tax (\$131.25). Weekly issues of \$3.00 per copy, plus tax payable in advance.

All cheques, money orders, etc., should be made payable to THE NEWFOUNDLAND EXCHEQUER ACCOUNT and all correspondence should be addressed to: Office of the Queen's Printer, P. O. Box 8700, Ground Floor, East Block, Confederation Building, St. John's, NL A1B 4J6. Telephone (709) 729-3649. Fax: (709) 729-1900.

Web Site: <http://www.gs.gov.nl.ca/printer/index.html>

**Place your order by contacting:
Office of The Queen's Printer
Confederation Building, East Block
St. John's, NL A1B 4J6
Telephone: (709) 729-3649 Fax: (709) 729-1900
email: queensprinter@gov.nl.ca**

**Government Information Product
Publication Rate Mail**

G.S.T. # R107442683

All requests for Subscription and Legislation MUST be prepaid.