

NOTE: Attached to the end of Part II is a list of Statutes of Newfoundland and Labrador, 2013 as enacted up to May 16, 2013.



THE NEWFOUNDLAND AND LABRADOR GAZETTE

PART I

PUBLISHED BY AUTHORITY

Vol. 88 ST. JOHN'S, FRIDAY, MAY 24, 2013 No. 21

CORPORATIONS ACT

NOTICE

Corporations Act - Section 393
Local Incorporations
For the Month of: March 2013

Date	Number	Company Name			
2013-03-01	69613	BIG HAMMER CONSTRUCTION INC.	2013-03-05	69632	V. Watkins Holdings Ltd.
2013-03-01	69605	FRED NICHOLS TOTAL HOME RENOVATIONS INC.	2013-03-05	69633	69633 NEWFOUNDLAND AND LABRADOR INC.
2013-03-01	69614	PARADISE MANAGEMENT SERVICES INC.	2013-03-05	69635	Adams Consulting Inc.
2013-03-01	69604	SAMUEL MANAGEMENT LTD.	2013-03-06	69643	HARBOUR VIEW ENTERPRISES (CARBONEAR) LIMITED
2013-03-01	69591	Canadian Firehouse Software Inc.	2013-03-06	69647	THE MERCY CENTRE FOR ECOLOGY AND JUSTICE CORP.
2013-03-01	69602	Qalipu Trucking Limited	2013-03-06	69639	LMH Holdings Ltd.
2013-03-01	69603	Concept Dental Inc.	2013-03-06	69641	R & J FISH HARVESTERS LTD.
2013-03-04	69627	ARTISAN CONCRETE INC.	2013-03-07	69655	KAYMAC HOLDINGS LIMITED
2013-03-04	69628	GANDER SC COMMUNITY CHARITIES INC.	2013-03-07	69654	LN NATUROPATHIC MEDICINE INC.
2013-03-04	69624	PEOPLE AND THE SEA FILM FESTIVAL INC.	2013-03-07	69646	69646 NEWFOUNDLAND & LABRADOR LTD.
2013-03-04	69626	SHELTERED HEARTS "STAY AT HOME" HEALTH CARE LTD	2013-03-07	69652	Rod Greeley Excavating Ltd.
2013-03-04	69625	STEELE BLASTING INC.	2013-03-07	69653	Pure Aqua Ventures Incorporated
2013-03-04	69618	69618 NEWFOUNDLAND & LABRADOR INC.	2013-03-08	69666	BROTHERS INVESTMENTS INC.
2013-03-04	69619	Sharper Aviation Services Ltd.	2013-03-08	69660	D B H HOLDINGS LTD.
2013-03-04	69621	TCR.O'Reilly Holdings Inc.	2013-03-08	69661	NEWDIVE MARINE LTD.
2013-03-04	69622	Webber Ventures Ltd.	2013-03-08	69663	TAPATAT FARMS INC.
2013-03-04	69623	JORMAC Construction Inc.	2013-03-11	69675	69675 NEWFOUNDLAND & LABRADOR INC.
2013-03-05	69636	DR. MELISSA BROBST, PROF. DENTAL CORP. INC.	2013-03-11	69669	BORN BUILDERS INC.
2013-03-05	69640	MUSTANG HOLDINGS LTD.	2013-03-11	69673	INDIAN POND CABIN ASSOCIATION INC.
2013-03-05	69634	ST. PIERRE TOURS (2013) LIMITED	2013-03-11	69670	MML HOLDINGS INC.
2013-03-05	69630	Stage West Theatre Festival Inc.	2013-03-11	69671	NEWFOUND RECRUITING CORPORATION - NL INC.
2013-03-05	69631	Hamilton Building Components Inc.	2013-03-11	69672	WHITE SOLUTIONS INC.
			2013-03-11	69662	Great Saves Goaltending Inc.
			2013-03-11	69667	69667 NEWFOUNDLAND & LABRADOR INC.
			2013-03-11	69668	69668 NEWFOUNDLAND & LABRADOR INC.
			2013-03-12	69684	ADMIRALS BEACH FISHERMEN'S COMMITTEE INC
			2013-03-12	69683	AVALON HVAC SERVICES LTD.

THE NEWFOUNDLAND AND LABRADOR GAZETTE
May 24, 2013

2013-03-12	69682	QAS PROPERTIES INC.	2013-03-21	69765	ATLANTIC PROVIDENCE INC.
2013-03-12	69677	69677 NEWFOUNDLAND AND LABRADOR INC.	2013-03-21	69761	CROCKERS LANDSCAPING LTD.
2013-03-12	69678	69678 NEWFOUNDLAND AND LABRADOR INC.	2013-03-21	69760	DEXTER MANAGEMENT LTD.
2013-03-12	69680	69680 NEWFOUNDLAND & LABRADOR INC.	2013-03-21	69764	INSIGHT HAIR & BEAUTY LIMITED
2013-03-13	69692	COMMONWEALTH DENTURE CLINIC LIMITED	2013-03-21	69759	MOBILE TIRE SERVICE NL INC
2013-03-13	69693	DR. NATALIE A. BANDRAUK PROFESSIONAL MEDICAL CORPORATION	2013-03-21	69753	CAT HARBOUR ENTERPRISES LTD.
2013-03-13	69691	EDM ATLANTIC INTERNATIONAL INC.	2013-03-21	69755	69755 NEWFOUNDLAND & LABRADOR INC
2013-03-13	69690	EXPOSURE TALENT CASTING INC.	2013-03-21	69757	69757 NEWFOUNDLAND & LABRADOR LIMITED
2013-03-13	69694	METICULOUS SERVICES INC.	2013-03-22	69758	NACHVAK SUPPLY & SERVICES INC.
2013-03-13	69695	NORTHWEST TRAILS ASSOCIATION INC.	2013-03-22	69778	GRAND BANK LOW POWER RADIO 103.9 FM INC
2013-03-13	69681	PedCo Maintenance & Repair Ltd.	2013-03-22	69777	PAVY HOLDINGS INC.
2013-03-13	69688	Newfoundland Pony Sanctuary Inc.	2013-03-22	69771	Lush's Electrical Ltd.
2013-03-13	69689	Industrial Scaffolding Inc.	2013-03-22	69772	Zenith Drilling Limited
2013-03-14	69710	NEWFOUNDLAND & LABRADOR HOUSING & HOMELESSNESS NETWORK INC.	2013-03-22	69773	P. Janes Fisheries Limited
2013-03-14	69711	THE AVALON SLEEVEENS INC.	2013-03-25	69782	69782 NEWFOUNDLAND AND LABRADOR LTD
2013-03-14	69696	PG Concrete Inc.	2013-03-25	69786	BOND'S AUTOBODY LTD.
2013-03-14	69699	The Welcome Home Initiative Inc.	2013-03-25	69788	D & B BUSSEY ENTERPRISE INCORPORATED
2013-03-14	69700	W.C. HULL PRODUCTS INC.	2013-03-25	69793	PORT ROYAL RESTORATION CORPORATION
2013-03-15	69720	AUNT JEAN'S PLACE INC.	2013-03-25	69787	RED TICKLE INN LIMITED
2013-03-15	69718	AZ HOLDINGS INC.	2013-03-25	69779	HMK Distributing Ltd.
2013-03-15	69721	CENTUM PREFERRED MORTGAGE CENTER INC.	2013-03-25	69780	TAK Holdings Inc.
2013-03-15	69701	Pye's Heating Service Ltd.	2013-03-25	69781	M.G. Fisheries Inc.
2013-03-15	69703	Palm Holdings Ltd.	2013-03-26	69794	69794 NEWFOUNDLAND & LABRADOR LTD.
2013-03-15	69712	Legacy Systems Analysts Ltd.	2013-03-26	69795	69795 NEWFOUNDLAND & LABRADOR INC.
2013-03-15	69713	Topsail Yards Inc.	2013-03-26	69802	69802 NEWFOUNDLAND AND LABRADOR LIMITED
2013-03-15	69714	Trinity Bay Paving Limited	2013-03-26	69801	DR. GEOFF ZBITNEW (2013) PROFESSIONAL MEDICAL CORPORATION
2013-03-15	69715	P3 Dental Laboratory Incorporated	2013-03-26	69796	SP HOLDINGS LTD.
2013-03-18	69716	69716 NEWFOUNDLAND & LABRADOR INC.	2013-03-26	69797	STAR WALK INTERNATIONAL BUFFET INC
2013-03-19	69732	FIRST AND GOAL INC.	2013-03-26	69783	GOOD GUY'S PROPERTY INC.
2013-03-19	69735	LUMAR CONSTRUCTION LTD.	2013-03-26	69784	We Are Junk Incorporated
2013-03-19	69731	NOCLAND BUSINESS INC.	2013-03-26	69790	MTL Disposal Inc.
2013-03-19	69742	QUINNS ELECTRICAL LIMITED	2013-03-26	69791	JD Coaching & Consulting Inc.
2013-03-19	69730	RON'S DISPOSAL SERVICE LIMITED	2013-03-26	69792	MVS Deep Dive Solutions Ltd.
2013-03-19	69733	T AND G CONSTRUCTION LTD.	2013-03-27	69813	SONNY'S SHOP INC.
2013-03-19	69728	TAYMER ROOFING AND RENOVATIONS LTD.	2013-03-27	69808	T & N IRONWORKS LIMITED
2013-03-19	69729	TDM ENTERPRISES INC.	2013-03-27	69806	WIGWAGS GROOMING INC.
2013-03-19	69717	Chiasson Risk Management Consulting Services Ltd.	2013-03-27	69803	Ultimate Interiors and Coatings Inc.
2013-03-19	69719	MUN Campus Lions Club Inc.	2013-03-27	69804	HGL Entertainment Incorporated
2013-03-19	69725	Smart Choice Homes Inc.	2013-03-27	69805	Forest Properties Inc.
2013-03-19	69726	TG Refrigeration Services Inc.	2013-03-28	69820	69820 NEWFOUNDLAND AND LABRADOR LTD.
2013-03-19	69727	CAP'S ELECTRICAL LTD.	2013-03-28	69816	KATHY'S NAILS & SPA INC
2013-03-20	69745	69745 NEWFOUNDLAND & LABRADOR INC.	2013-03-28	69823	LUCKY PRODUCTIONS INC.
2013-03-20	69754	J M C HYDROSEEDING LIMITED	2013-03-28	69822	NAKISKA VENTURES LIMITED
2013-03-20	69748	LAND AND SEA INSPECTION LTD.	2013-03-28	69815	PAWSITIVE LEADER INC.
2013-03-20	69747	NEWFOUND SHORELINE INC.	2013-03-28	69821	R & I INVESTMENTS LTD.
2013-03-20	69746	OCEAN DEVINE FAMILY RESTAURANT INC.	2013-03-28	69819	SHEPPARD DESIGNS INC.
2013-03-20	69752	SAUL OF TARSUS BENEDICTUS SOCIETY INCORPORATED	2013-03-28	69807	B C Lundrigan Consulting Inc.
2013-03-20	69751	ULTRA CLEAR FRANCHISES LTD	2013-03-28	69814	C.D.R.Electric Ltd.
2013-03-20	69740	SAAW HOLDINGS INC.	Total Incorporations: 149		
2013-03-21	69768	69768 NEWFOUNDLAND & LABRADOR INC.	<hr/>		
2013-03-21	69769	69769 NEWFOUNDLAND AND LABRADOR LTD.	Corporations Act - Section 331		
2013-03-21	69767	ANCHOR ROCK COMMITTEE INC	Local Revivals		
			For the Month of: March 2013		
			Date	Number	Company Name
			2013-03-04	2386	CORNWALL ESTATES, LIMITED
			2013-03-21	30757	O'BRIEN'S OCEAN PRODUCTS LTD.

THE NEWFOUNDLAND AND LABRADOR GAZETTE
May 24, 2013

2013-03-25	24790	FRANK MURPHY & SONS (1990) LIMITED
2013-03-26	34296	ALOHA Tans Limited
2013-03-26	16070	E.T.S. HOLDINGS LIMITED
2013-03-26	52014	MASTER SIDING LTD.

Total Revivals: 6

Corporations Act - Section 296 and 393
Local Continuances
For the Month of: March 2013

Date	Number	Company Name
2013-03-04	2386	CORNWALL ESTATES, LIMITED
2013-03-22	69776	SHANNON & TREVOR FISHERIES LIMITED
2013-03-28	69828	LORELEI WALSH PARK & ASSOCIATES INC.

Total Continuances: 3

Corporations Act - Section 286
Local Amendments
For the Month of: March 2013

Date	Number	Company Name
2013-03-01	42673	ARETHUSA HOLDINGS INC.
2013-03-01	64230	MIDDLE ARM FUNDRAISING COMMITTEE INC.
2013-03-01	62041	THE BODY KNEADS THERAPISTS INC.
2013-03-01	59050	VISIT HUMBER VALLEY LTD
2013-03-04	31063	10245 Newfoundland Limited
2013-03-04	25995	M.J. MURPHY & ASSOCIATES LIMITED
2013-03-04	14751	Newont Limited
2013-03-04	34661	O'BRIEN HOLDINGS LTD.
2013-03-04	66022	SHEA HOLDINGS LTD.
2013-03-04	57685	TCR HOLDINGS INC.
2013-03-04	16188	The Royal Newfoundland Constabulary Association
2013-03-04	45994	Windseal Holdings Limited
2013-03-05	36004	Boreal Atlantic Ltd.
2013-03-05	33686	Long Island Resources Limited
2013-03-06	68683	68683 NEWFOUNDLAND AND LABRADOR INC.
2013-03-06	51138	HWR SERVICES LTD.
2013-03-06	46202	The Beach Trading Company Limited
2013-03-07	67225	BARBOUTI INVESTMENTS LIMITED
2013-03-07	69591	Canadian Firehouse Software Inc.
2013-03-07	62499	DR. C. HAPGOOD PMC INC.
2013-03-08	66451	DONALD ANTHONY PLC INC.
2013-03-08	22895	Heart and Stroke Foundation of Newfoundland and Labrador Inc.
2013-03-08	67608	KING SONS TRANSPORT LIMITED
2013-03-08	52533	MUSGRAVETOWN AREA FORAGE PRODUCERS ASSOCIATION INC.
2013-03-08	19243	R.K.G. Holdings Limited
2013-03-11	64337	FRESH HEALTH AND WELLNESS INC.
2013-03-11	52635	MERCER'S TOTAL CONSTRUCTION LIMITED
2013-03-11	67845	Sunrise Aviation Ltd.
2013-03-13	20635	GREELEY'S ENTERPRISES LIMITED
2013-03-15	68882	NEWFOUND HOPE COUNSELLING CENTRE, INC.
2013-03-15	66299	NEWFOUNDLAND LAND BANK CORPORATION
2013-03-19	34787	GLENFAIR FARMS LTD.
2013-03-19	48065	KATHIRGAMANATHAN HOLDINGS LIMITED

2013-03-19	60301	NORTH ATLANTIC FUR GROUP (CANADA) LTD.
2013-03-21	67402	DAC HOLDINGS INC.
2013-03-21	50114	JENSAR HOLDINGS LIMITED
2013-03-22	69765	ATLANTIC PROVIDENCE INC.
2013-03-22	44840	HANLEY CONSTRUCTION INC.
2013-03-22	68241	PROGRESSIVE ENGINEERING & CONSULTING INC.
2013-03-22	67258	VEITCH PHYSIOTHERAPY INC.
2013-03-25	57712	C.A.R.S. AND MORE INC.
2013-03-25	24790	FRANK MURPHY & SONS (1990) LIMITED
2013-03-25	58923	LETHBRIDGE CONSTRUCTION LIMITED
2013-03-25	47168	ST. BARBE FIRE DEPARTMENT INC.
2013-03-26	53680	DR. ANDREW LANG PROFESSIONAL DENTAL CORPORATION
2013-03-26	9197	Robert Churchill Building Supplies Limited
2013-03-26	59962	SALTMAN HOLDINGS LIMITED
2013-03-26	61529	ZBITNEW HOLDINGS LIMITED
2013-03-27	68424	CANADA SPECIAL OLYMPICS 2016 GAMES ORGANIZING COMMITTEE INC.
2013-03-27	67030	IRB PIPING LTD
2013-03-27	53767	KAY'S DOLLAR AND DISCOUNT INCORPORATED
2013-03-27	5443	PIPER'S HOLE RIVER INVESTMENTS INC.
2013-03-27	28742	Whim Holdings Limited
2013-03-28	69795	69795 NEWFOUNDLAND & LABRADOR INC.
2013-03-28	55493	DODD'S DIESEL REPAIR LTD
2013-03-28	64553	FREE PARKING PICTURES INC.
2013-03-28	54362	PANGEO SUBSEA INC.
2013-03-28	9197	Robert Churchill Building Supplies Limited
2013-03-28	45287	TIDAL WAVE (1929) LIMITED

Total Amendments: 59

Corporations Act - Section 335
Local Dissolutions
For the Month of: March 2013

Date	Number	Company Name
2013-03-01	64415	ARNOLD'S LANDSCAPING INC.
2013-03-01	50920	BURLE PEAT INC.
2013-03-01	61205	CORY PEACH DISTRIBUTING LTD.
2013-03-01	56550	MOUNT PEARL INVESTMENT GROUP LTD.
2013-03-01	58627	R.S.B. HOLDINGS INC.
2013-03-01	43346	Remote Access Technology (Newfoundland) Inc.
2013-03-01	39003	Stringer's Holdings Limited
2013-03-01	60350	WATERFORD ENERGY NL INC.
2013-03-05	30265	Random Construction Limited
2013-03-06	53195	DUNTARA ENTERPRISES INC.
2013-03-06	63623	Grand Lake Dairy Limited
2013-03-06	68640	LORELEI WALSH PARK & ASSOCIATES INC.
2013-03-07	39777	Gambo Convenience Store Limited
2013-03-07	50399	MARINE FARMS MARKETING LTD.
2013-03-08	53047	PENMORE PROPERTIES INC.
2013-03-11	26388	IRISHTOWN MEAT MARKET LTD.
2013-03-12	60079	Dream. Become. Inspire. Inc
2013-03-12	16692	G.W.L. CONSTRUCTION LIMITED
2013-03-12	51341	SATIN HOLDINGS LTD.
2013-03-14	66960	CANADIAN RENOVATIONS LTD
2013-03-14	20076	DAS ENTERPRISES LIMITED

THE NEWFOUNDLAND AND LABRADOR GAZETTE
May 24, 2013

2013-03-14	40656	VIDEO WORLD INC.	2013-03-01	69607	W. G. GARLAND LIMITED
2013-03-15	58217	Acupuncture Centre Inc.	From:	69522	69522 NEWFOUNDLAND AND LABRADOR LIMITED
2013-03-15	54610	C.J.S. CONSTRUCTION CO. LTD		60672	W. G. GARLAND LIMITED
2013-03-15	37900	Dema-Phia Inc.			
2013-03-15	8883	STEEL MOUNTAIN SERVICE CENTER LIMITED	2013-03-01	69611	WAY'S TRANSPORT LTD.
2013-03-19	61158	61158 NEWFOUNDLAND & LABRADOR INC.	From:	59209	Marvin Way Holdings Limited
2013-03-19	53335	LONESTAR TECHNICAL SERVICES INC.		42166	WAY'S TRANSPORT LTD.
2013-03-19	30844	Rainbow Park Ltd.	2013-03-14	69744	VISION HOLDINGS INC.
2013-03-19	41098	STEPHEN SPARKES CONSULTING INC.	From:	53983	Alberta Hot Shot Inc.
2013-03-20	55174	CAPITAL LUMBER LTD.		47700	Design-Build Management Inc.
2013-03-20	26058	GANDER F. C. REALTY LTD.		46906	Vision Holdings Inc.
2013-03-20	24540	LABRADOR DRY CLEANING & LAUNDRY LIMITED	2013-03-28	69817	GOLF NEWFOUNDLAND LABRADOR INC.
2013-03-20	57942	M & S Discount Foods Ltd.	From:	41024	Golf Marketing Alliance Inc.
2013-03-21	57247	EastCoast PowerSports Ltd		4007	Newfoundland - Labrador Golf Association
2013-03-21	61853	KimBar Enterprises Inc.			
2013-03-22	33480	C & S TRANSPORT LTD.	2013-03-28	69824	T. HALLETT LIMITED
2013-03-25	46143	C.I.R. Electrical Ltd.	From:	2094	T. HALLETT LIMITED
2013-03-25	29388	Fortune/Grand Bank Waste Disposal Site Inc.		28742	Whim Holdings Limited
2013-03-26	52593	52593 NEWFOUNDLAND AND LABRADOR LIMITED	2013-03-29	69825	MALLAM HOLDING CORPORATION
2013-03-26	16441	BEATON SHEPPARD ASSOCIATES LIMITED	From:	47081	11218 NEWFOUNDLAND LIMITED
2013-03-26	62504	F. R. LAYTE MANAGEMENT PLC INC.		50283	MALLAM HOLDING CORPORATION
2013-03-26	55525	FRANKLIN LAYTE PLC INC.	2013-03-29	69826	OLYMPIC CONSTRUCTION LIMITED
2013-03-26	39640	MAINS'L MARINE INCORPORATED	From:	9973	Nordic Construction Limited
2013-03-27	53378	BEACON CONSULTING & ASSOCIATES INC.		37897	Olympic Construction Limited
2013-03-28	62566	Stormers Distribution Ltd.	2013-03-31	69829	HMG HOLDINGS INC.
			From:	54107	BRA GUS INC.
				65815	HMG HOLDINGS INC.
			2013-03-31	69827	YOUNG'S FUNERAL HOME LIMITED
			From:	45441	BAIE VERTE REGIONAL AMBULANCE SERVICE LTD.
				34299	EMERGENCY MEDICAL SERVICES (2006) INC.
				4041	Young's Funeral Home Limited

Total Dissolutions: 46

Corporations Act - Section 299
Local Discontinuances
For the Month of: March 2013

Date	Number	Company Name
2013-03-26	36004	Boreal Atlantic Ltd.
2013-03-26	33686	Long Island Resources Limited

Total Discontinuances: 2

Corporations Act - Section 294
Local Amalgamations
For the Month of: March 2013

Date	Number	Company Name
2013-03-01	69608	CARLYLE HOLDINGS INC.
From:	69521	69521 NEWFOUNDLAND AND LABRADOR LIMITED
	61379	CARLYLE HOLDINGS INC.
2013-03-01	69606	CROSS BARRENS VENTURES INC.
From:	69465	69465 NEWFOUNDLAND AND LABRADOR LIMITED
	53109	CROSS BARRENS VENTURES INC.
2013-03-01	69610	RAY HINDY LIMITED
From:	69466	69466 NEWFOUNDLAND AND LABRADOR LIMITED
	49157	Ray Hindy Limited

Total Amalgamations: 12

Corporations Act - Section 286
Local Name Changes
For the Month of: March 2013

Number	Company Name
64230	MIDDLE ARM FUNDRAISING COMMITTEE INC.
2013-03-01	From: MIDDLE ARM COME HOME YEAR 2012 INC.
67225	BARBOUTI INVESTMENTS LIMITED
2013-03-07	From: DR. MOHAMMAD BARBOUTI (2012) PROFESSIONAL MEDICAL CORPORATION
67608	KING SONS TRANSPORT LIMITED
2013-03-08	From: 67608 NEWFOUNDLAND & LABRADOR LIMITED

THE NEWFOUNDLAND AND LABRADOR GAZETTE
May 24, 2013

52635		MERCER'S TOTAL CONSTRUCTION LIMITED	2013-03-06	69642	PEARSON DUNN INSURANCE INC.
2013-03-11	From:	KYLE CONSTRUCTION LIMITED	2013-03-08	69664	DOT INTEGRATED FINANCIAL CORP.
			2013-03-08	69665	ROCHESTER MIDLAND LIMITED/ROCHESTER MIDLAND LIMITÉE
68882		NEWFOUND HOPE COUNSELLING CENTRE, INC.	2013-03-11	69676	PEINTURE UCP INC.
2013-03-15	From:	New Found Hope Counseling Centre, Inc.	2013-03-11	69674	UCP PAINT INC.
			2013-03-12	69685	SPRUNG INVESTMENT MANAGEMENT INC.
66299		NEWFOUNDLAND LAND BANK CORPORATION	2013-03-12	69687	RED-D-ARC LIMITED/RED-D-ARC LIMITÉE
2013-03-15	From:	Highland & Sea Properties Corporation	2013-03-12	69687	REGIONAL TIRE DISTRIBUTORS (ATLANTIC) INC.
			2013-03-13	69736	KRAUS CANADA LTD.
67402		DAC HOLDINGS INC.	2013-03-14	69704	HARBOUR AUTHORITY OF BAY BULLS
2013-03-21	From:	67402 NEWFOUNDLAND & LABRADOR INCORPORATED	2013-03-14	69709	MADSEN GROUP INC.
			2013-03-14	69702	NORTHERN LIGHTS FISHING LODGE (2007) LTD.
69765		ATLANTIC PROVIDENCE INC.	2013-03-14	69707	VW CREDIT CANADA FUNDING GP INC.
2013-03-22	From:	ATLANTIC PROVIDANCE INC.	2013-03-14	69708	VW CREDIT CANADA LEASING ULC
			2013-03-14	69705	WAL-BREN LUBRICATION SALES & SERVICE LTD.
58923		LETHBRIDGE CONSTRUCTION LIMITED	2013-03-15	69722	CALLISTER MUSICO INSURANCE GROUP INC.
2013-03-25	From:	ED/RIVER CONSTRUCTION LTD.	2013-03-15	69723	KATSHESHUK FISHERIES LTD.
			2013-03-19	69739	BIOCODEX CANADA INC.
59962		SALTMAN HOLDINGS LIMITED	2013-03-19	69743	CALLIDUS CAPITAL CORPORATION
2013-03-26	From:	DR. DAVID L. SALTMAN PROFESSIONAL MEDICAL CORPORATION	2013-03-19	69734	MAMMOET-MCKEIL LTD.
			2013-03-19	69737	PPI SOLUTIONS (TORONTO CENTRE) INC.
			2013-03-20	69749	DIRECT HORIZONTAL DRILLING INC.
61529		ZBITNEW HOLDINGS LIMITED	2013-03-20	69750	KPMG MANAGEMENT SERVICES INC.SERVICES DE GESTION KPMG INC.
2013-03-26	From:	DR. GEOFF ZBITNEW PROFESSIONAL MEDICAL CORPORATION	2013-03-21	69763	HARBOUR AUTHORITY OF CALVERT
			2013-03-21	69762	HEXAHUB SOLUTIONS INC.
5443		PIPER'S HOLE RIVER INVESTMENTS INC.	2013-03-21	69766	SILVER HEIGHTS CAPITAL MANAGEMENT INC.
2013-03-27	From:	GREEN'S SERVICE STATION LIMITED	2013-03-21	69770	VOITH HYDRO INC.
			2013-03-22	69775	MEGSON FITZPATRICK INC.
69795		69795 NEWFOUNDLAND & LABRADOR INC.	2013-03-22	69774	STEEPED FINE LOOSE TEAS & ACCESSORIES INC.
2013-03-28	From:	SB INTERSPORT INC.	2013-03-26	69798	C.T. SALES LTD.
			2013-03-26	69800	JEMK HOLDINGS INC.
45287		TIDAL WAVE (1929) LIMITED	2013-03-27	69809	KRC NORTH HOLDINGS 15, INC.
2013-03-28	From:	FOUR STARS CLUB 2001 LTD.	2013-03-27	69810	NORREP 2013 MANAGEMENT INC.
			2013-03-27	69812	PINNACLE WEALTH BROKERS INC.
			2013-03-28	69818	CANADIAN INSTITUTE FOR HEALTH INFORMATION INSTITUT CANADIEN D'INFORMATION SUR LA SANTÉ

Total Name Changes: 14

Corporations Act - Section 443
Extra-Provincial Registrations
For the Month of: March 2013

Date	Number	Company Name
2013-03-01	69609	1289072 ALBERTA LTD.
2013-03-01	69615	CPC GPCO INC.
2013-03-01	69616	MATRIX 2013 SHORT DURATION NATIONAL AND QUEBEC FLOW THROUGH MANAGEMENT LIMITED
2013-03-05	69638	ESIS CANADA INC.
2013-03-06	69648	CANADIAN MICROWAVE INC.
2013-03-06	69649	DELOITTE & TOUCHE CORPORATE FINANCE CANADA INC./FINANCEMENT CORPORATIF DELOITTE & TOUCHE CANADA INC.

Total Registrations: 40

Corporations Act - Section 451
Extra-Provincial Name Changes
For the Month of: March 2013

Number	Company Name
61990	SWAROVSKI LIGHTING, LTD.
2013-03-01	From: SCHONBEK WORLDWIDE LIGHTING INC.
68428	CAP-EX IRON ORE LTD.
2013-03-08	From: CAP-EX VENTURES LTD.

THE NEWFOUNDLAND AND LABRADOR GAZETTE
May 24, 2013

56428		LANDIS+GYR TECHNOLOGIES CANADA, INC.	2013-03-06	69645	MASONITE INTERNATIONAL CORPORATION/CORPORATION INTERNATIONALE MASONITE
2013-03-19	From:	HUNT TECHNOLOGIES GLOBAL,INC.	From:	66222	MASONITE INTERNATIONAL CORPORATION/CORPORATION INTERNATIONALE MASONITE
64150		ALLY CREDIT CANADA COMPANY/ALLY CRÉDIT CANADA COMPAGNIE	2013-03-06	69644	OCEAN CHOICE HOLDINGS INC.
2013-03-27	From:	ALLY CREDIT CANADA COMPANY/ALLY CRÉDIT CANADA COMPAGNIE	From:	65135	OCEAN CHOICE HOLDINGS INC.
2013-03-27	From:	ALLY CREDIT CANADA LIMITED	2013-03-06	69651	SGS CANADA INC.
2013-03-27	From:	ALLY CRÉDIT CANADA LIMITÉE	From:	66806	SGS CANADA INC.
2013-03-27	From:	ALLY CREDIT CANADA LIMITED/ALLY CRÉDIT CANADA LIMITÉE	2013-03-06	69650	WASTE MANAGEMENT OF CANADA CORPORATION
64150		ALLY CREDIT CANADA LIMITED	From:	60128	WASTE MANAGEMENT OF CANADA CORPORATION
2013-03-27	From:	ALLY CRÉDIT CANADA LIMITÉE	2013-03-07	69656	PERFORMINS CANADA INC.
2013-03-27	From:	ALLY CREDIT CANADA COMPANY/ALLY CRÉDIT CANADA COMPAGNIE	From:	52726	PERFORMINS CANADA INC.
2013-03-27	From:	ALLY CREDIT CANADA LIMITED	2013-03-07	69657	PERFORMINS CANADA INC.
2013-03-27	From:	ALLY CRÉDIT CANADA LIMITÉE	From:	69656	PERFORMINS CANADA INC.
2013-03-27	From:	ALLY CREDIT CANADA LIMITED/ALLY CRÉDIT CANADA LIMITÉE	2013-03-07	69658	PERFORMINS CANADA INC.
2013-03-27	From:	ALLY CREDIT CANADA LIMITED	From:	69657	PERFORMINS CANADA INC.
2013-03-27	From:	ALLY CRÉDIT CANADA LIMITÉE	2013-03-07	69659	PERFORMINS CANADA INC.
2013-03-27	From:	ALLY CREDIT CANADA LIMITED/ALLY CRÉDIT CANADA LIMITÉE	From:	69658	PERFORMINS CANADA INC.
64150		ALLY CREDIT CANADA LIMITED/ALLY CRÉDIT CANADA LIMITÉE	2013-03-11	69679	STANLEY BLACK & DECKER CANADA CORPORATION
2013-03-27	From:	ALLY CREDIT CANADA COMPANY/ALLY CRÉDIT CANADA COMPAGNIE	From:	57994	BLACK & DECKER CANADA INC.
2013-03-27	From:	ALLY CREDIT CANADA LIMITED		61876	STANLEY CANADA CORPORATION
2013-03-27	From:	ALLY CRÉDIT CANADA LIMITÉE	2013-03-12	69686	COINAMATIC CANADA INC.
2013-03-27	From:	ALLY CREDIT CANADA COMPANY/ALLY CRÉDIT CANADA COMPAGNIE	From:	65650	COINAMATIC CANADA INC.
2013-03-27	From:	ALLY CREDIT CANADA LIMITED	2013-03-13	69698	JARDINE LLOYD THOMPSON CANADA INC.
2013-03-27	From:	ALLY CRÉDIT CANADA LIMITÉE	From:	53833	JARDINE LLOYD THOMPSON CANADA INC.
2013-03-27	From:	ALLY CREDIT CANADA LIMITED/ALLY CRÉDIT CANADA LIMITÉE	2013-03-13	69697	YM INC. (SALES)
69389		RRL HOLDINGS INC.	From:	64929	YM INC. (SALES)
2013-03-27	From:	8312141 CANADA INC.	2013-03-14	69706	NEXEN INC.
Total Name Changes: 7			From:	50986	NEXEN INC.
<i>Corporations Act - Section 294</i>			2013-03-15	69724	SUN LIFE FINANCIAL DISTRIBUTORS (CANADA) INC.
Extra-Provincial Registrations for Amalgamation			From:	3812D	DISTRIBUTION FINANCIÈRE SUN LIFE (CANADA) INC.
For the Month of: March 2013					DISTRIBUTION FINANCIÈRE SUN LIFE (CANADA) INC.
Date	Number	Company Name			SUN LIFE FINANCIAL LTC SOLUTIONS INC.
2013-03-01	69612	HALLIBURTON CANADA ULC		52066	LA FINANCIÈRE SUN LIFE, SOLUTIONS SLD INC.
From:	63149	HALLIBURTON CANADA CORP.			
2013-03-04	69629	GENERAL CABLE COMPANY LTD./COMPAGNIE GENERAL CABLE LTEE	2013-03-19	69738	RONA REVY INC.
From:	5824F	GENERAL CABLE COMPANY COMPAGNIE GENERAL CABLE	From:	67253	7594828 CANADA INC.
2013-03-05	69637	SIEMENS CANADA LIMITED	2013-03-19	69741	SÉCURIGLOBE INC.
From:	66808	SIEMENS CANADA LIMITÉE	From:	55324	SÉCURIGLOBE INC.
		SIEMENS CANADA LIMITED	2013-03-25	69785	CARFINCO INC.
		SIEMENS CANADA LIMITEE	From:	50225	CARFINCO INC.

2013-03-26	69799	UAP INC.	From:	66371	PARSONS BRINCKERHOFF
From:	5645F	UAP INC.			HALSALL INC.
2013-03-27	69811	PARSONS BRINCKERHOFF	Total Registrations for Amalgamation:	22	
		HALSALL INC.			

SERVICE NL
Dean Doyle, Registrar of Companies

May 24

HIGHWAY TRAFFIC ACT
TRAFFIC REGULATIONS
PUBLISHED BY AUTHORITY

PURSUANT TO THE POWER delegated by the Minister of Transportation and Works under section 189 of the *Highway Traffic Act*, RSNL1990 cH-3 and pursuant to the authority conferred by section 414 (2) (oo) of the *Municipalities Act, 1999*, SNL 1999 cM-24, the TOWN OF MASSEY DRIVE hereby enacts the following Regulations which were adopted at a Public Council Meeting held on the 27th day of February, 2013.

GORDON DAVIS, Mayor
ROGER HUNT, Town Clerk/Manager

1. TITLE

These Regulations shall be known and cited as "The Town of Massey Drive Traffic Regulations."

2. DEFINITIONS

In these Regulations, the following words, unless the context otherwise requires, shall have the following meanings:

- (a) "Bus" means a motor vehicle designed or used for the transportation of passengers with a seating capacity of 10 or more in addition to the driver, but excluding those motor vehicles when used for personal transportation by the owner or with the owner's permission.
- (b) "Commercial Motor Vehicle" means a vehicle designated to carry goods and persons and includes a bus, a school bus, a truck (excluding vehicles 1 ¼ tonnes and under), a truck trailer and other motor vehicles designed for commercial use but does not include camper type vehicles designed or adopted exclusively for recreational purposes.
- (c) "Council" means the Town Council of Massey Drive
- (d) "Crosswalk" means:
 - (i) Any part of a roadway at an intersection or elsewhere distinctly indicated for pedestrian crossing by signs or by lines or other markings on the surface; or
 - (ii) The part of a roadway at an intersection that is included within the connection of the lateral lines of the sidewalks of the opposite sides of a highway, measured from the curbs, or in the absence of curbs, from the edge of the roadway.
- (e) "Driveway" means a clearly defined private roadway, path or passage or a like opening or space which is wide enough, but not wider than is necessary for the passage of a motor vehicle, whereby the owner, occupier or user of property has vehicular access from the roadway to a point within the property.
- (f) "Emergency Vehicle" means:
 - (i) A motor vehicle driven by a constable or by a member of the police branch of any of Her Majesty's Armed Forces or a peace officer being a member of the Royal Newfoundland Constabulary or the Royal Canadian Mounted Police where there is an urgent emergency justifying a rate of speed in excess of any maximum rate of speed provided for in these Regulations;
 - (ii) A motor vehicle carrying firefighting equipment in responding to an alarm of fire;
 - (iii) An ambulance responding to a call or transporting a patient where there is an urgent emergency justifying a rate of speed in excess of any maximum rate of speed provided for in these Regulations; or
 - (iv) A motor vehicle where there is an urgent emergency.

- (g) "Highway" means a place or way, including a structure forming part of the place or way, designed and intended for, or used by the public for the passage of traffic and includes all the space between the boundary lines of the place or way.
- (h) "Intersection" means the area enclosed within the prolongation or connection of the lateral curb lines or if there are no curb lines, the lateral boundary lines of two or more highways that join one another at an angle, whether or not one of the highways cross the other.
- (i) "Motor Vehicle" means a vehicle propelled, driven or controlled otherwise than by muscular power, other than a trailer or a vehicle running on fixed rails.
- (j) "Municipal Enforcement Officer" means for the purpose of these Regulations a peace officer with the powers as outlined in the *Municipalities Act*, SNL1999 cM-24 and amendments and as outlined in the *Highway Traffic Act*, RSNL1990 cH-3 and amendments.
- (k) "Operator" means a person driving a motor vehicle on a highway or who has the care or control of the motor vehicle on a highway whether in motion or not.
- (l) "Owner" means:
 - (i) The person who holds the legal title to a vehicle; or
 - (ii) In the case of a vehicle that is registered, the person in whose name it is registered.
- (m) "Park" means to permit a vehicle whether occupied or not, to stand otherwise than temporarily for the immediate purpose of and while actually engaged in loading or unloading goods or taking up or setting down passengers or in obedience to traffic Regulations or traffic signs or the direction of a traffic officer.
- (n) "Pedestrian" means a person on foot, a handicapped person in a wheelchair, or a child in a carriage or on a sleigh being pushed or pulled.
- (o) "Persons" means any persons, firm, partnership, association, corporation, or any organization of any kind.
- (p) "Regulations" means Town Of Massey Drive Traffic Regulations made under the authority of the *Highway Traffic Act* and amendments and the *Municipalities Act, 1999* and amendments.
- (q) "Roadway" means a portion of a highway that is improved, designed, or ordinarily used for vehicular traffic, but does not include the shoulder unless the shoulder is paved, and where a highway includes two or more separate roadways, the term "roadway" refers to any one roadway separately and not to all of the roadways collectively.
- (r) "School bus" means a motor vehicle:
 - (i) Designed or used to carry 7 or more passengers, in addition to the driver;
 - (ii) Owned, operated by or contracted to a school board or agent of a school board; and
 - (iii) Used to transport children to or from school or to and from places other than school for the purpose of school related activities.
- (s) "Sidewalk" means that portion of a highway between the curb lines or the lateral lines of a roadway and the adjacent property lines set apart for the use of pedestrians and includes any part of a highway set apart or marked as being for the exclusive or intended use of pedestrians and is considered to include an area of a highway lying between the curb lines or the lateral lines of a roadway and that portion of a highway set apart for the use of pedestrians.
- (t) "Stop" when required means the complete cessation of movement.
- (u) "Stop" or "Stand" when prohibited means any stopping or standing of a vehicle whether occupied or not except when necessary to avoid conflict with other traffic or in compliance with the direction of a traffic officer or traffic control device or signal.
- (v) "Town" means the TOWN OF MASSEY DRIVE.
- (w) "Traffic" includes vehicles, pedestrians and animals while using a highway for the purpose of travel.
- (x) "Traffic Officer" means any person appointed by Council to enforce these Regulations, including a Municipal Enforcement Officer.
- (y) "Traffic Sign" includes all traffic control signals, warning sign posts, direction posts, signs, lines, marks or other devices for the guidance or persons using highways.

- (z) "Vehicle" means a device in, upon or by which a person or property may be transported or driven upon a highway.

3. COUNCIL AUTHORITY

- (a) The Council may cause or permit traffic lights or signs to be placed on or near any highway within the limits of the Town.
- (b) Traffic lights or signs erected or authorized under subsection (1) of these Regulations may be signs for any of the following purposes;
- (i) To regulate the movement of traffic;
 - (ii) To indicate the route to be followed by traffic;
 - (iii) To restrict or prohibit the use of any part of any highway, other than a main highway designed as such by the Minister of Transportation and Works, within the limits of the Town;
 - (iv) To indicate maximum speed limits in any area or on any part of any highway within the limits of the Town, so that vehicles driven in excess of such speed shall be taken to have failed to conform to the indication given by the sign;
 - (v) To restrict or prohibit the parking of vehicles in any area or on any part of any highway within the limits of the Town;
 - (vi) To restrict or prohibit temporarily the use of any highway, other than a main highway designated as such by the Minister of Transportation and Works, or any part of any highway within the limits of the Town, whenever, owing to the likelihood of danger to the public or serious damage to the highway, it appears to the Council to be necessary; and to limit the loads of vehicles owing to the condition of the highway if the Council deems it necessary, provided that the traffic lights or signs shall not apply to any person granted a permit in writing by the Council to use the highway in case of an emergency;
 - (vii) To warn users of the highway of the need for special caution;
 - (viii) To convey information to users of the highway within the limits of the Town;
 - (ix) To set out proper pedestrian crossing on any highway within the limits of the town; and
 - (x) To restrict or reserve specific parking spaces for the sole use of disabled person.
- (c) Any person who fails to comply with the directions, restrictions, prohibitions, or warnings given by traffic lights or signs erected in accordance with these Regulations shall be guilty of an offence against these Regulations.

4. PARKING OFFENCES

- (a) No person shall stop, stand or park a vehicle on a highway so that the vehicle or any part of it is:
- (i) On a sidewalk or an area generally used by or intended for use by pedestrians;
 - (ii) In front of a public or private driveway or in front of an authorized loading door designated as such;
 - (iii) Within 6 metres of an intersection;
 - (iv) Within 5 metres from any fire hydrant;
 - (v) Within a crosswalk;
 - (vi) Within 6 metres of the approach side of a crosswalk;
 - (vii) Within 8 metres upon the approach to any flashing beacon, stop sign, or traffic-control sign or signal located at any side of a roadway;
 - (viii) Within 6 metres either side of the entrance to or exit from a hotel, church, school, public meeting place, theatre, dance hall or playground;
 - (ix) Within a distance of 20 metres from a bus stop erected under these Regulations, except where otherwise provided by a sign erected under these Regulations;
 - (x) Within 6 metres of a driveway entrance to a fire station;
 - (xi) Alongside or opposite a street excavation or obstruction when stopping, standing or parking obstructs traffic;

- (xii) In a place in contravention of a traffic control device that gives notice that stopping, standing or parking is there prohibited or restricted;
 - (xiii) Parked on the left side of the highway in the direction it is heading, excepting where such parking is designated by proper signs erected by Council;
 - (xiv) Within 150 metres of any site where a fire is in progress unless permission has been obtained from a police constable, excepting a fire engine, ambulance, clergy car, police car, medical doctor's car or nurse's car;
 - (xv) Parked in such a manner as to interfere with, hinder or obstruct the normal flow of traffic;
 - (xvi) Parked on highway property between the curb or edge of the roadway and the boundary line of the highway;
 - (xvii) On any property classified as an easement or upon which Council grants a permit;
 - (xviii) For the purpose of displaying the vehicle for sale;
 - (xix) For the purpose of washing, greasing or repairing the vehicle, except for such repairs as have been necessitated by an emergency;
 - (xx) Parked in an area designated as a parking space for disabled persons only.
- (b) No person shall double park any motor vehicle on any highway within the limits of the Town.
 - (c) No person shall park or stop any vehicle on any roadway unless on the right hand side of the roadway having regard to the direction in which the vehicle was proceeding with the right front and rear wheels parallel to and not more than thirty (30) centimetres from the curb where there is a raised curb, or where there is no curb or a rolled curb, with the right front and rear wheels parallel to and as near the right hand limit of the roadway as is practical without stopping or parking over a sidewalk or footpath or over any part of the road where grass is grown or which is not intended for the use of vehicles.
 - (d) No person shall stand, stop or park or drive a vehicle upon any highway or public area within the Town in contravention to any signs that may be posted by Council.

5. COMMERCIAL VEHICLES OFFENCES

- (a) The Council is hereby authorized to determine and designate these streets in the Town, which shall be used by commercial motor vehicles.
- (b) These Regulations shall not prohibit:
 - (i) The operation of commercial motor vehicles upon any street where necessary to the conduct of business at a destination point, provided that streets upon which such traffic is permitted are used until reaching the intersection nearest the destination point;
 - (ii) The operation of an emergency vehicle upon any street in the Town;
 - (iii) The operation of commercial motor vehicle owned or operated by the Town, Public Utilities or any contractor engaged in the repair, delivery of materials, maintenance or construction of streets, street improvements, or street utilities within the Town Of Massey Drive; or
 - (iv) The operation of commercial motor vehicles upon any officially established detour in the Town of Massey Drive.
- (c) No person shall park any commercial motor vehicle in any residential zone in the TOWN OF MASSEY DRIVE, unless a permit for the parking has been issued by the Council in conformity with the Town of Massey Drive Traffic Regulations.
- (d) An application for a permit to park any commercial motor vehicle in any residential zone shall be made to the Council in such form as prescribed by the Council and every applicant for a permit shall furnish with the application such information as Council may require.
- (e) The Council shall attach to the permit such conditions as it deems fit for the parking of any commercial motor vehicle in a residential zone and may permit parking for such limited time as it deems fit.
- (f) The driver of a commercial vehicle loading or unloading freight within the Town shall, if possible, place such vehicle off the highway into some private parking space; where no alternative loading or unloading point exists, place such vehicles as near as possible to the curb or side of the highway and load or unload as quickly as possible, but in no case shall a driver place a commercial vehicle in such a position as to excessively hinder or obstruct the normal flow of traffic either vehicular or pedestrian.

6. SNOW CLEARING

- (a) No person shall park any unattended motor vehicle on any highway or municipal parking area in such a way as to interfere with, hinder or obstruct snow clearing operations.
- (b) During the period from the first day of December in each year to the last day of April in the succeeding year, both days inclusive, no person shall park an unattended vehicle(s), regardless of weather conditions, upon any highway within the TOWN OF MASSEY DRIVE between the hours of 12 midnight and 10:00 a.m. At any time during a snowstorm or for 12 hours thereafter.
- (c) Any motor vehicle parked contrary to Regulation 7 (a) or (b) may be towed away by Council or their representatives, at the owner's risk and expense, to a place selected by the Council or person so authorized.

7. OTHER LIMITATIONS

- (a) No structure, object or vehicle, other than a vehicle licensed under the *Highway Traffic Act*, shall move over a highway or bridge, within the Town except with the written approval of Council.
- (b) Notwithstanding subsection (1), no vehicle that is propelled over tracks or other device, other than tires, shall move over a highway or bridge, within the Town except with the written approval of Council.

8. ABANDONED VEHICLES

- (a) When a vehicle:
 - (i) Is standing, stopped or parked upon a highway within the Town limits or bridge in such a position that it may;
 - (1) Interfere with the pedestrian or vehicular traffic;
 - (2) Constitute a hindrance to the maintenance, repair or improvement thereof;
 - (3) Hinder or impede the ploughing of or removal of snow or ice therefrom; or
 - (4) Hinder or impede the carrying out of any undertaking of the Council; or
 - (ii) Has been apparently abandoned upon a highway within the Town limits, sidewalk or bridge for longer than twenty-four (24) hours; or
 - (iii) Has been left unattended upon any highway within the Town limits, sidewalk or bridge in contravention of these Regulations,

the Council or any person authorized for the purpose by the Council may remove that vehicle, at the owner's risk and expense, to a place selected by the Council or person so authorized.
- (b) The Council may dispose of any vehicle removed and stored under these Regulations, by Public Sale or Auction, if the vehicle is not claimed within ninety (90) days of removal and storage.
- (c) Prior to the return of the vehicle to its owner, the owner shall pay the costs of its removal and storage as determined by the Council and where such costs are not paid by the owner, the council may sell the vehicle on Public Sale or Auction to satisfy such costs upon notice to the owner, including the costs, if any, of or incidental to the Public Sale or Auction.

9. ANTI LITTER OFFENCES

- (a) A person shall not throw or deposit or cause to be thrown, deposited or left on a highway, glass, nails, tacks scraps of metal or other material which may injure tires of vehicles or rubbish, or refuse or waste.
- (b) A person who removes a wrecked or damaged vehicle from a highway shall remove glass or any injurious substance or thing dropped upon the highway from the vehicle.
- (c) No person shall place any object or structure (including objects or structures used for street sports), on any street which interferes with the flow of traffic. Any object or structure so placed may be removed by any person authorized by Council, at the owner's expense.

10. OFFENCE

Notwithstanding the *Provincial Offences Act*, any person who violates any of the provisions of these Regulations, shall be guilty of an offence and shall be liable on summary conviction to a fine or not more than the maximum and not less than the minimum amount as prescribed for the offence in Schedule "A" to these Regulations and appearing in that Schedule opposite the number or letter or both of the Regulations, subsection or paragraph.

11. REPEAL OF PREVIOUS REGULATIONS AND AMENDMENTS

All previous Town Of Massey Drive Traffic Regulations are amended and repealed.

12. COMPLIANCE WITH OTHER ACTS AND REGULATIONS

Nothing in these Regulations serves to exempt any person from obtaining any license, permission, permit, authority or approval required by any other regulation of the Town or any statute or regulation of the Province of Newfoundland and Labrador, and in such cases where more than one regulation or statute applies the more restrictive regulation or statute shall apply.

13. EFFECTIVE DATE

These Regulations shall come into force on 1st day of March, 2013.

In witness whereof the Seal of the TOWN OF MASSEY DRIVE has been affixed hereto and these regulations have been signed by the Mayor and the Chief Administrative Officer on behalf of Council on this 27th day of February, 2013.

GORDON DAVIS, Mayor
ROGER HUNT, Chief Administrative Officer

**SCHEDULE A
TOWN OF MASSEY DRIVE
Schedule of Fines**

section	subsection		offence	fine
4	(a)	(i)	Parking on sidewalk	\$50.00
		(ii)	Parking in front of public or private driveway	\$50.00
		(iii)	Parking within 6 metres of intersection	\$50.00
		(iv)	Parking within 5 metres of fire hydrant	\$50.00
		(v)	Parking within a crosswalk	\$100.00
		(vi)	Parking within 6 metres of a crosswalk	\$50.00
		(vii)	Parking within 8 metres of a traffic control device	\$50.00
		(viii)	Parking within 6 metres of an entrance or exit to hotel, church, school, public meeting place, theatre, dance hall or playground	\$50.00
		(ix)	Parking within 20 metres of a bus stop	\$50.00
		(x)	Parking within 6 metres of a fire station	\$50.00
		(xi)	Parking opposite or beside a street excavation	\$50.00
		(xii)	Parking contrary to signs	\$100.00
		(xiii)	Parking on left side of highway	\$50.00
		(xiv)	Parking within 150 metres of the site of a fire	\$50.00
		(xv)	Parking as to obstruct traffic	\$50.00
		(xvi)	Parking on highway property outside curb	\$50.00
		(xvii)	Parking on property classified as easement	\$50.00
		(xviii)	Parking on highway to display vehicle for sale	\$50.00
		(xix)	Parking on highway for repairs	\$50.00
		(xx)	Parking in area for disabled persons	\$75.00
	(b)		Double Parking	\$50.00
	(c)		Parking away from the curb	\$50.00
	(d)		Stop stand or park in area prohibited by signs	\$30.00
5	(c)		Commercial motor vehicles parking in residential zones without a permit	\$100.00
6	(a)		Parking so as to obstruct snow clearing	\$50.00
	(b)		Parking on a highway or municipal parking area between 12 midnight and 10:00 am	\$50.00
7	(a)		Movement of structure, object or vehicle not licensed under the <i>Highway Traffic Act</i> without Council approval.	\$50.00
	(b)		Movement of vehicle not on tires without approval of Council	\$50.00
9	(a)		Throwing injurious materials or rubbish on highway	\$50.00
	(b)		Failure to remove glass injurious substance dropped upon the highway from a wrecked vehicle	\$50.00
	(c)		Placing object or structure on a street	\$50.00

**SCHEDULE B
TOWN OF MASSEY DRIVE
No Parking Zones**

Massey Drive:

- 1) From the intersection of Prince Charles Road to civic # 91
- 2) From civic # 117 to # 127

Mountainview Road:

- 1) From the intersection of Massey Drive to civic # 11
- 2) From the intersection of Massey Drive to civic # 8

Country Lane:

- 1) Civic # 26 to # 34
- 2) Civic # 21 to # 29
- 3) Civic # 43 to # 47
- 4) Civic # 50 to # 52
- 5) Civic # 68 to # 86

Lakeview Road:

- 1) The east side of Lakeview Road from the Massey Drive intersection to the end of the road.

Dove Crescent:

- 1) Civic # 18 to the intersection with the southern end of Bellwood Drive
- 2) Civic # 21 to # 33

Bellwood Drive:

- 1) From the intersection of Dove Crescent at the northern end of Bellwood Drive to civic # 7
- 2) Civic # 4 to # 14

Sunset Boulevard:

- 1) From the intersection with the western end of Warren Drive to civic # 72
- 2) Civic # 67 to # 75

Link Pond Drive:

- 1) From the intersection of Massey Drive to civic # 15
- 2) From the intersection of Massey Drive to civic # 16
- 3) Civic # 28 to # 40
- 4) Civic # 29 to # 41
- 5) Civic # 48 to # 58
- 6) Civic # 51 to # 57
- 7) Civic # 72 to # 80
- 8) Civic # 65 to # 69
- 9) Civic # 96 to # 104
- 10) Civic # 83 to the intersection at the western end of Hanlon Drive

May 24

URBAN AND RURAL PLANNING ACT, 2000

**NOTICE OF REGISTRATION
TOWN OF CARBONEAR
DEVELOPMENT REGULATIONS
AMENDMENT No. 25, 2013**

TAKE NOTICE that the TOWN OF CARBONEAR Development Regulations Amendment No. 25, 2013, adopted by Council on the 9th day of April, 2013, has been registered by the Minister of Municipal Affairs.

In general terms, Development Regulations Amendment No. 25, 2013, will re-zone land from Residential Large Lot (RLL) to Residential Medium Density (RMD). The Amendment is required to allow for a 46 lot serviced residential subdivision to be located west of Forest Road. The amendment will re-zone the rear portions of lot Nos. 28-31, along with the rear portion of lot No. 2, on Blueberry Crescent from Residential Large Lot (RLL) to Residential Low Density (RLD).

The TOWN OF CARBONEAR Regulations Amendment No. 25, 2013, comes into effect on the day that this notice is published in *The Newfoundland and Labrador Gazette*. Anyone who wishes to inspect a copy of the TOWN OF CARBONEAR Development Regulations Amendment No. 25, 2013, may do so at the Town Office, Carbonear during normal working hours.

TOWN OF CARBONEAR
Cathy Somers, Town Clerk

May 24

**NOTICE OF REGISTRATION
ST. JOHN'S DEVELOPMENT
REGULATIONS AMENDMENT NO. 568 2013**

TAKE NOTICE that the ST. JOHN'S Development Regulations Amendment Number 568, 2013 adopted on the 3rd day of May 2013, has been registered by the Minister of Municipal Affairs.

In general terms, the purpose of Development Regulations Amendment Number 568, 2013 is to rezone land in the Area of East White Hills Road from the Commercial Industrial (CI) Zone to the Industrial General (IG) Zone.

This amendment comes into effect on the date that this notice is printed in *The Newfoundland and Labrador Gazette*. Anyone who wishes to inspect a copy of the amendment may do so at the Department of Planning, Development and Engineering, 3rd Floor, St. John's City Hall during regular business hours.

CITY OF ST. JOHN'S
Ken O'Brien, MCIP – Acting Director of Planning

May 24

MECHANICS' LIEN ACT

**NOTICE OF INTENTION TO RELEASE
MECHANICS' LIEN HOLDBACK
PURSUANT TO SECTION 12 OF THE
MECHANICS' LIEN ACT, RSNL1990 cM-3
(THE "ACT")**

PURSUANT TO section 12 of the Act, and in relation to a contract A4VI-30-CA0003 entered into between VALE NEWFOUNDLAND AND LABRADOR LIMITED and BMA Constructors which contract is dated as of December 10, 2010, notice is hereby given of the intention of VALE NEWFOUNDLAND AND LABRADOR LIMITED, to the release of mechanics lien holdback funds 30 days following the date of this notice.

Dated at St. John's, NL, this 23rd day of April, 2013.

FLUOR CANADA LIMITED
Geneva Davey, Project Contracts Manager
(acting as Agent for Vale NL Limited)

May 10, 17, 24, 31

**QUIETING OF TITLES ACT
2013 01G 2077
IN THE SUPREME COURT OF
NEWFOUNDLAND AND LABRADOR
TRIAL DIVISION (General)**

NOTICE OF APPLICATION under the *Quieting of Titles Act*, RSNL1990 cQ-3, as amended;

NOTICE IS HEREBY given to all parties that CITY TRUST AND MORTGAGE COMPANY LIMITED has applied to the Supreme Court of Newfoundland and Labrador, Trial Division, at St. John's, to have title to all that piece or parcel of land situate and being on the north side of Salmonier Line, in the province of Newfoundland and Labrador, as more particularly described and set forth in the Schedule hereunto annexed marked "A", saving and excepting therefrom the property described in Schedule "B", of which the Applicant claims to be the owner, investigated and for a Declaration that CITY TRUST AND MORTGAGE COMPANY LIMITED is the absolute owner thereof. Pursuant to power of sale proceedings, CITY TRUST AND MORTGAGE COMPANY LIMITED acquired the subject property by a Deed of Conveyance dated November 28, 2008 and registered as number 292043 at the Registry of Deeds for the province of Newfoundland and Labrador ("the Registry"). There is a Deed of Rectification dated March 9, 2009 and registered as number 309442 in the Registry.

The Applicant has been ordered to publish notice of the application as required by the above named Act. All persons having title adverse to the said title claimed by the Applicant shall file in the Registry of the Supreme Court of Newfoundland and Labrador at St. John's particulars of such adverse claim and serve the same together with an Affidavit verifying same on the undersigned solicitors for the Applicant on or before the 2nd day of July, 2013, after which date no party having any claim shall be permitted to file the same or be heard except by leave of the Court and

subject to such conditions as the Court may deem just. All such adverse claims shall be then investigated as the said Supreme Court of Newfoundland and Labrador at St. John's may direct.

DATED AT the City of St. John's, in the province of Newfoundland and Labrador, this 15th day of May, 2013.

FRENCH & ASSOCIATES
Solicitors for the Applicant
PER: Christopher E. Gill

ADDRESS FOR SERVICE:
Suite 122, Elizabeth Towers
100 Elizabeth Avenue
St. John's, NL A1B 1S1

SCHEDULE "A"

ALL THAT piece or parcel of land situate and being on the north side of Salmonier Line, in the Province of Newfoundland and Labrador, Canada, bounded and abutted as follows, that is to say: Commencing at a point, the said point being the southeast corner of land formerly of the Estate of Edward Beesau and being north forty-nine degrees nineteen minutes twenty-three second east (N49°19'23"E) a distance of five seven six decimal four three five metres (576.435m) from Monument No. 92273 with a reference bearing of north sixty-two degrees fifty-nine minutes east (N62°59'E) from Monument No. 92272 to Monument No. 92273;

THENCE running along the northern limits of Salmonier Line north sixty-two degrees thirty one minutes east (N62°31'E) a distance of seventy-six decimal three five metres (76.35m);

THENCE turning and running along the northern limits of Salmonier Line north sixty degrees thirty minutes east (N60°30'E) a distance of one hundred forty-five decimal three two metres (145.32m);

THENCE turning and running along the northern limits of Salmonier Line north sixty degrees zero one minutes east (N60°01'E) a distance of sixty-six decimal six three metres (66.63m);

THENCE turning and running along the northern limits of Salmonier Line north sixty-five degrees fifty six minutes east (N65°56'E) a distance of fifty-three decimal three two metres (53.32m);

THENCE turning and running along the northern limits of Salmonier Line north eighty-one degrees eleven minutes east (N81°11'E) a distance of fifty-six decimal nine seven metres (56.97m);

THENCE turning and running along the northern limits of Salmonier Line north eighty-seven degrees fifteen minutes east (N87°15'E) a distance of eighty-eight decimal six metres (88.66m);

THENCE turning and running along the northern limits of Salmonier Line north eighty-six degrees twenty two minutes east (N86°22'E) a distance of seventy decimal four five metres (70.45m);

THENCE turning and running along the northern limits of Salmonier Line north eighty degrees zero four minutes east

(N80°04'E) a distance of thirty-four decimal eight five metres (34.85m);

THENCE turning and running by Crown Land north forty-three degrees eleven minutes west (N43°11'W) a distance of one hundred twenty decimal nine metres (120.99m);

THENCE turning and running by Crown Land north zero three degrees eleven minutes west (N03°11'W) a distance of one hundred forty decimal eight two metres (140.82m);

THENCE turning and running by Crown Land north seventy six degrees forty-nine minutes east (N76°49'E) a distance of two hundred forty-one decimal four metres (241.44m);

THENCE turning and running by Crown Land north thirteen degrees eleven minutes west (N13°11'W) a distance of two hundred one decimal two zero metres (201.20m);

THENCE turning and running by Crown Land north seventy-six degrees forty-nine minutes east (N76°49'E) a distance of one hundred five decimal zero metres (105.0m)

THENCE turning and running by Crown Land and north thirteen degrees eleven minutes west (N13°11'W) a distance of one thousand and thirty-two decimal zero two metres (1,032.02m);

THENCE turning and running along the waters of Harbour Main Pond north eighty-eight degrees zero six minutes west (N88°06'W) a distance of thirteen decimal eight four metres (13.84m);

THENCE turning and running along the waters of Harbour Main Pond south thirty-one degrees twenty-seven minutes west (S31°27'W) a distance to twenty-eight decimal five eight metres (28.58m);

THENCE turning and running along the waters of Harbour Main Pond south seventy-nine degrees forty-nine minutes west (S79°49'W) a distance of eighty-two decimal four seven metres (82.47m);

THENCE turning and running along the waters of Harbour Main Pond south sixty-four degrees twenty-two minutes west (S64°22'W) a distance of ninety-five decimal three nine metres (95.39m);

THENCE turning and running along the waters of Harbour Main Pond south sixty-eight degrees thirty-four minutes west (S68°34'W) a distance of twenty decimal nine two metres (20.92m);

THENCE turning and running along the waters of Harbour Main Pond north seventy-one degrees forty-two minutes west (N71°42'W) a distance of eighteen decimal nine one metres (18.91m);

THENCE turning and running along the waters of Harbour Main Pond south seventy-nine degrees thirty minutes west (S79°30'W) a distance of sixteen decimal seven five metres (16.75m);

THENCE turning and running along the waters of Harbour Main Pond south forty-nine degrees twenty-two minutes west (S49°22'W) a distance of thirty six decimal nine zero metres (36.90m);

THENCE turning and running along the waters of Harbour Main Pond south sixty-six degrees fifty-three minutes west (S66°53'W) a distance to forty-five decimal three metres (45.33m);

THENCE turning and running along the waters of Harbour Main Pond south eighty-one degrees forty-nine minutes west (S81°49'W) a distance of forty-two decimal nine four metres (42.94m);

THENCE turning and running along the waters of Harbour Main Pond north eighty-five degrees zero one minute west (N85°01'W) a distance of twenty three decimal five three metres (23.53m);

THENCE turning and running along the waters of Harbour Main Pond south eighty-two degrees eleven minutes west (S82°11'W) a distance of fifteen decimal five metres (15.55m);

THENCE turning and running along the waters of Harbour Main Pond north sixty degrees fourteen minutes west (N60°14'W) a distance of twenty-six decimal nine three metres (26.93m);

THENCE turning and running along the waters of Harbour Main Pond north sixty-four degrees twenty-nine minutes west (N64°29'W) a distance of seventy-one decimal eight four metres (71.84m);

THENCE turning and running by Crown Land south sixty-two degrees twenty-nine minutes west (S62°29'W) a distance of two hundred thirty-four decimal six seven metres (234.67m);

THENCE turning and running along the eastern limits of the Trans Canada Highway south forty-six degrees zero two minutes east (S46°02'E) a distance of forty decimal three seven metres (40.37m);

THENCE turning and running along the eastern limits of the Trans Canada Highway south forty-five degrees forty-nine minutes east (S45°49'E) a distance of thirty-seven decimal eight four metres (37.84m);

THENCE turning and running along the eastern limits of the Trans Canada Highway south forty-three degrees fifty-two minutes east (S43°52'E) a distance of thirty decimal zero seven metres (30.07m);

THENCE turning and running along the eastern limits of the Trans Canada Highway south thirty-eight degrees thirteen minutes east (S38°13'E) a distance of thirty-four decimal zero nine metres (34.09m) ;

THENCE turning and running along the eastern limits of the Trans Canada Highway south thirty-two degrees thirty-five minutes east (S32°35'E) a distance of thirty-four decimal two eight metres (34.28m);

THENCE turning and running along the eastern limits of the Trans Canada Highway south twenty-six degrees twenty-four minutes east (S26°24'E) a distance of fifty-nine decimal one four metres (59.14m);

THENCE turning and running along the eastern limits of the Trans Canada Highway south twenty-one degrees forty-two minutes east (S21°42'E) a distance of seventy eight decimal zero three metres (78.03m);

THENCE turning and running along the eastern limits of the Trans Canada Highway south eleven degrees zero three minutes east (S11°03'E) a distance of eighty-seven decimal three five metres (87.35m);

THENCE turning and running along the eastern limits of the Trans Canada Highway south zero three degrees fifty minutes east (S03°50'E) a distance of two hundred eighty-four decimal five eight metres (284.58m);

THENCE turning and running along the eastern limits of the Trans Canada Highway south zero two degrees forty-eight minutes east (S02°48'E) a distance of one hundred twenty-three decimal four one metres (123.41m);

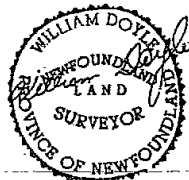
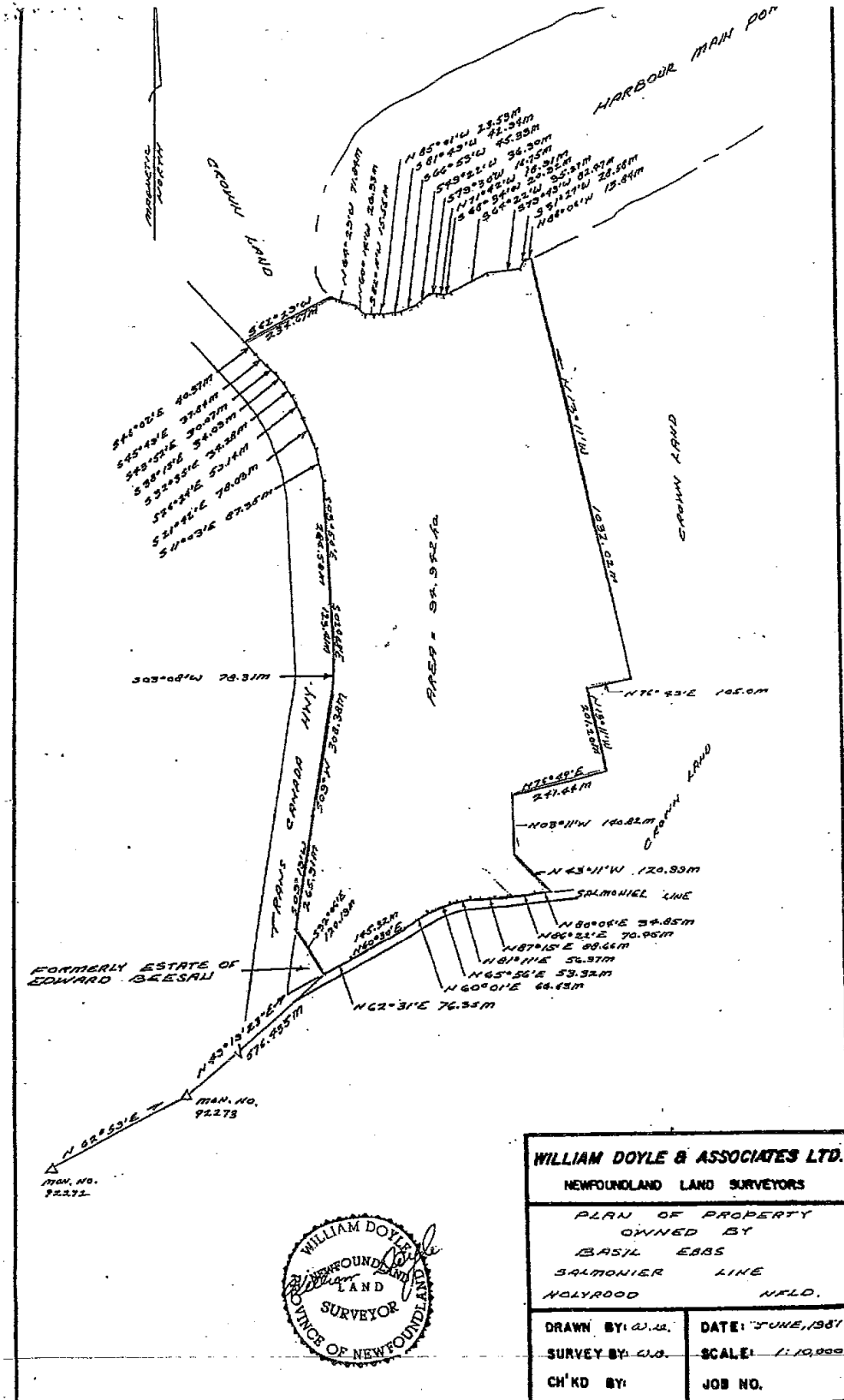
THENCE turning and running along the eastern limits of the Trans Canada Highway south zero three degrees zero eight minutes west (S03°08'W) a distance of seventy-eight decimal three one metres (78.31m);

THENCE turning and running along the eastern limits of the Trans Canada Highway south zero nine degrees west (S09°W) a distance of three hundred eight decimal three eight metres (308.38m);

THENCE turning and running along the eastern limits of the Trans Canada Highway south zero nine degrees nineteen minutes west (S09°19'W) a distance of two hundred sixty-five decimal nine one metres (265.91m);

THENCE turning and running by land formerly of the Estate of Edward Beesau south thirty-two degrees zero six minutes east (S32°06'E) a distance of one hundred twenty decimal one nine metres (120.19m) more or less, to the point of commencement and containing in all an area of 94.942 ha., as more particularly described and delineated on the plan hereto annexed.

All bearings are referred to Magnetic North .



WILLIAM DOYLE & ASSOCIATES LTD.	
NEWFOUNDLAND LAND SURVEYORS	
PLAN OF PROPERTY OWNED BY BASIL EBBES SALMONIER LINE HOLYROOD Nfld.	
DRAWN BY: W.D.	DATE: JUNE, 1987
SURVEY BY: W.D.	SCALE: 1:10,000
CH'KD BY:	JOB NO.

SCHEDULE "B"

ALL THAT piece or parcel of land situate and being on the north side of Salmonier Line in the Provincial Electoral District of Harbour Main – Bell Island, in the Province of Newfoundland and Labrador, Canada, bounded and abutted as follows, that is to say: commencing at a point; the said point being the Southeast corner of land of Basil Ebbs and being North 58°54'E, a distance of 1107.489m from Monument No. 92273 with a reference bearing of N62°59'E from Monument No. 92272 to Monument No. 92273.

THENCE running along the Northern limits of Salmonier Line North eighty-six degrees twenty-two minutes East (N86°22'E) a distance of twenty-six decimal one one meters (26.11m).

THENCE turning and running along the Northern Limits of Salmonier Line North eighty degrees zero four minutes East N80°04'E) a distance of thirty- four decimal eight four metres (34.84m).

THENCE turning and running by Crown Land North forty-three degrees eleven minutes west (N43°11'W) a distance of one hundred twenty decimal nine nine meters (120.99m).

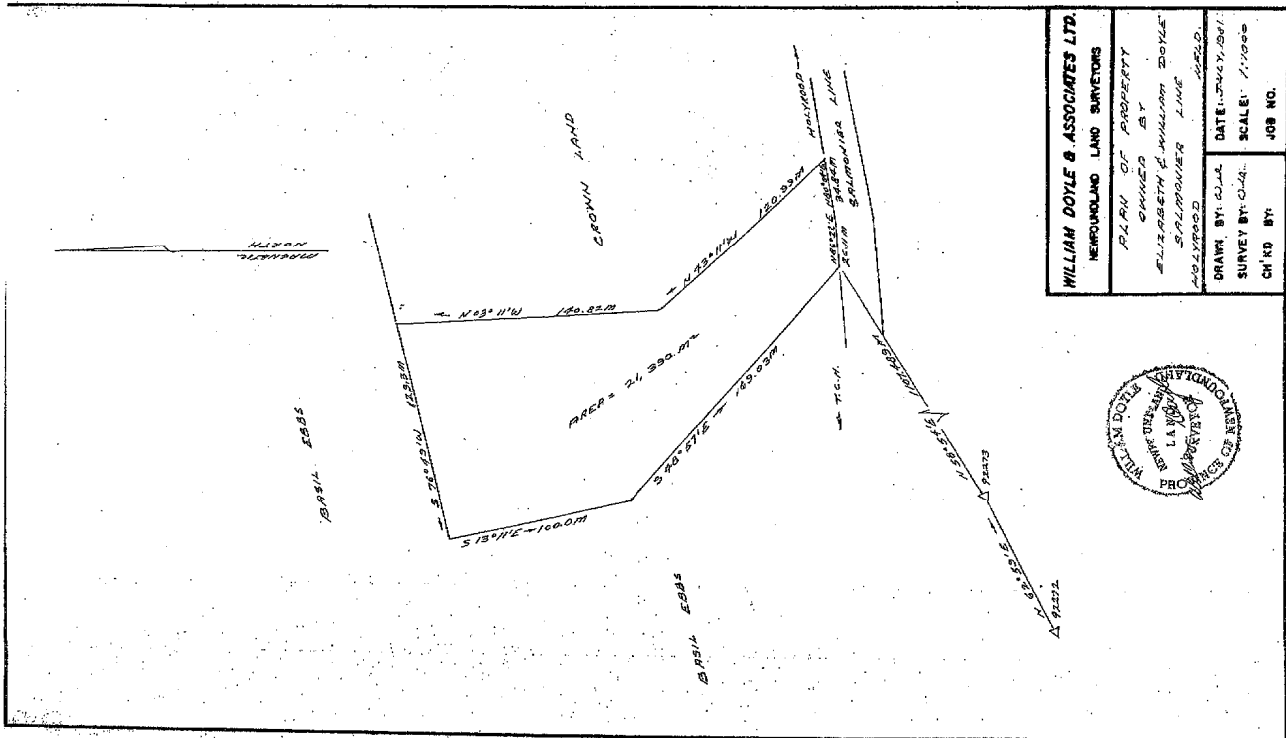
THENCE turning and running by Crown Land North zero three degrees eleven minutes West (N03°11'W) a distance of one hundred forty decimal eight two meters (140.82m).

THENCE turning and running by land of Basil Ebbs South seventy-six degrees forty-nine minutes West (S76°49'W) a distance of one hundred twenty three decimal three meters (123.3m).

THENCE turning and running by land of Basil Ebbs South thirteen degrees eleven minutes East (S13°11'E) a distance of one hundred decimal zero metres (100.0m);

THENCE turning and running by land of Basil Ebbs South forty-eight degrees fifty-seven minutes East (S48°57'E) a distance of one hundred sixty-nine decimal zero three meters (169.03m) more or less, to the point of commencement and containing in all an area of 21,390m²

All bearings are referred to Magnetic North.



2013 06G 0066
IN THE SUPREME COURT OF
NEWFOUNDLAND AND LABRADOR
TRIAL DIVISION (General)

NOTICE OF APPLICATION under the *Quieting of Titles Act*, RSNL1990 cQ-3.

NOTICE is hereby given to all parties that DENISE LEONARD, of the Town of Paradise, in the Province of Newfoundland and Labrador, has applied to the Supreme Court, Trial Division, Grand Bank, to have title to all that piece or parcel of property situate at the Town of Clarenville, District of Trinity North, in the Province of Newfoundland and Labrador, which property is more particularly described in Schedules "A" and "C" hereto annexed and shown in Schedules "B" and "D" hereto annexed.

ALL BEARINGS aforementioned, for which DENISE LEONARD claims to be the owner investigated and for a Declaration that she is the absolute owner in fee simple in possession and the said DENISE LEONARD has been ordered to public Notice of Application as required by the above named Act.

All persons having title adverse to the said title claimed by the said DENISE LEONARD shall file in the Registry of the Supreme Court of Newfoundland and Labrador, Trial Division, Grand Bank, particulars of such adverse claim and serve the same together with Affidavit verifying same on the undersigned Solicitors for the Petitioner on or before the 25th day of June, 2013, after which date no party having any claim shall be permitted to file the same or to be heard except by special leave of the Court and subject to such conditions as the Court may deem just.

All such adverse claims shall be investigated then in such manner as the Supreme Court of Newfoundland and Labrador, Trial Division, Grand Bank, may direct.

Dated at Clarenville, in the Province of Newfoundland and Labrador this 26th day of April, 2013.

MILLS PITTMAN & TWYNE
Solicitors for the Applicant
PER: Gregory K. Pittman

ADDRESS FOR SERVICE:
Suite 201, 111 Manitoba Drive
Clarenville, NL A5A 1K2

Tel: (709) 466-2641
Fax: (709) 466-7109

DENISE LEONARD Clarenville, NL

SCHEDULE "A"

ALL THAT piece or parcel of land situate and being in the TOWN OF CLARENVILLE, in the Electoral District of Trinity North abutted and bounded as follows:

THAT IS TO SAY: Beginning at a point on the southern limit of Hunt's Lane, the said point having coordinates N 5 338 481.25 metres and E 232 300.50 metres of the Three Degree Modified Transverse Mercator Projection (NAD-83) for the Province of Newfoundland and Labrador;

THENCE by property formerly Reginald Leonard (Quieting of Title 1998 No. G-180) now DENISE LEONARD south one degree fifty-three minutes fifty-five seconds east (S1°53'55"E) thirty decimal zero five (30.05) metres;

THENCE by property formerly granted to John Noseworthy (vol. 1 - fol. 109) now DENISE LEONARD north seventy-three degrees forty-nine minutes zero five seconds west (N73°49'05"W) sixty-six decimal eight three (66.83) metres;

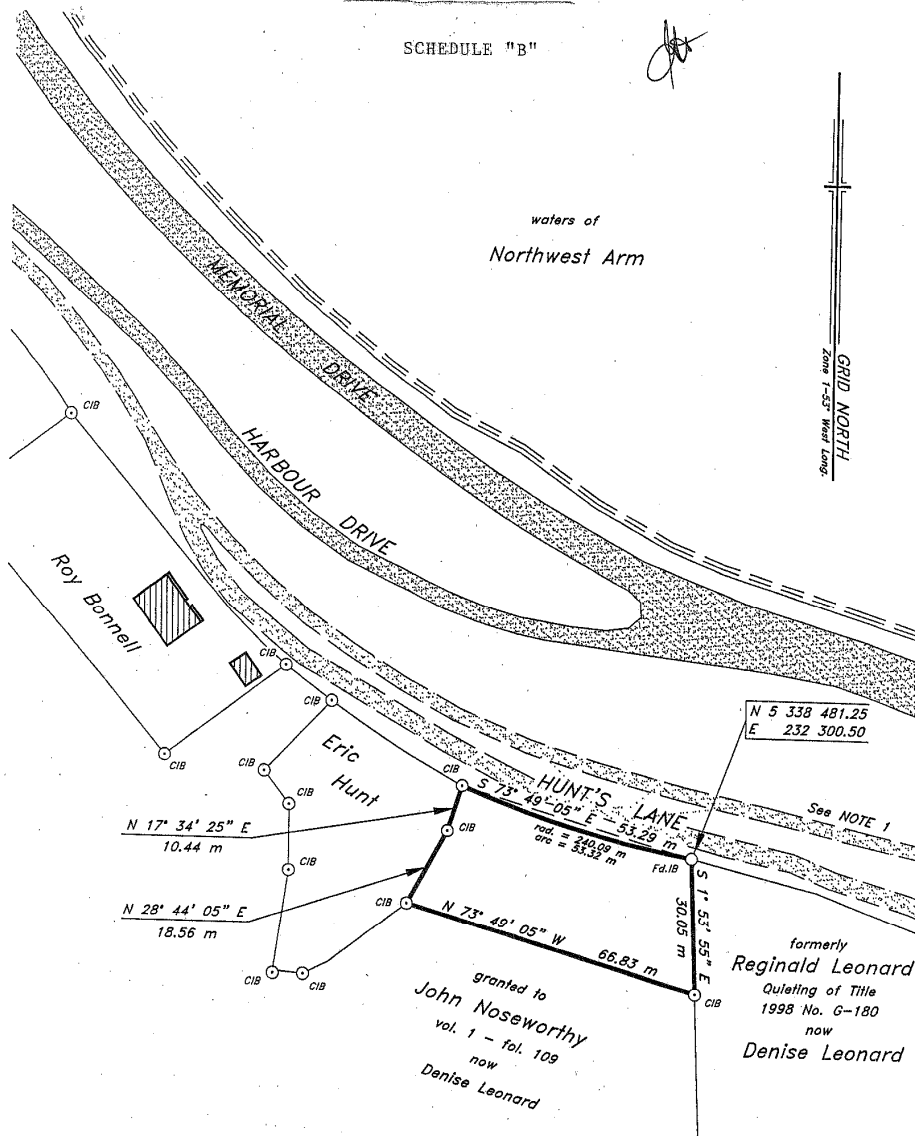
THENCE by property of Eric Hunt north twenty-eight degrees forty-four minutes zero five seconds east (N28°44'05"E) eighteen decimal five six (18.56) metres, north seventeen degrees thirty-four minutes twenty-five seconds east (N17°34'25"E) ten decimal four four (10.44) metres;

THENCE along the said southern limit of Hunt's Lane along the arc of a curve having a radius of two hundred and forty decimal zero nine (240.09) metres to a point, the said point being distant fifty-three decimal two nine (53.29) metres as measured on a bearing of south seventy-three degrees forty-nine minutes zero five seconds east (S73°49'05"E) from the last mentioned point, more or less to the point of beginning and containing an area of 0.1643 hectares.

All bearings refer to the above mentioned Projection.

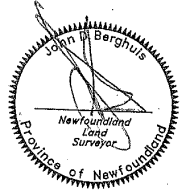
CONTROL SURVEYS LTD

SCHEDULE "B"



Area = 0.1643 hectares

NOTE CIB CAPPED IRON BAR
 IB IRON BAR
 Fd. FOUND
 - NO SCALE FACTOR USED
 ALL DISTANCES ARE GRID DISTANCES



NOTE 1
 formerly Canadian National Railway
 Right-of-Way (20 metres wide)
 now
 Railways Provincial Park
CONTROL MONUMENTS
 (MAD-83)

78G2018 N 5 338 706.299
 E 232 113.510
 78G2019 N 5 339 129.397
 E 232 174.751

(((CONTROL SURVEYS LTD. NEWFOUNDLAND LAND SURVEYORS 39 MARINE DRIVE, ASA 1M5 - Tel: (709) 486-3666 Clarenville Newfoundland	
SURVEY ON BEHALF OF DENISE LEONARD	
Clarenville Newfoundland	
SCALE:	1 : 1000
DATE:	July 20, 2012
JOB No.:	2011-229
SURVEY BY:	J.D.R.

SCHEDULE "C"

DENISE LEONARD Clarenville, NL

ALL THAT piece or parcel of land situate and being in the Town of Clarenville, in the Electoral District of Trinity North abutted and bounded as follows:

THAT IS TO SAY: Beginning at a point on the southern limit of formerly Canadian National Railway Right-of-Way (20 metres wide) now T'Railways Provincial Park (old railway bed), the said point having coordinates N 5 338 638.28 metres and E 232 017.79 metres of the Three Degree Modified Transverse Mercator Projection (NAD-83) for the Province of Newfoundland and Labrador;

THENCE along the said southern limit of formerly Canadian National Railway Right-of-Way now T'Railways Provincial Park (old railway bed) along the arc of a curve having a radius of one hundred and forty decimal zero zero (140.00) metres to a point, the said point being distant one hundred and fifty-seven decimal five one (157.51) metres as measured on a bearing of south sixty-six degrees fifteen minutes thirty-five seconds east (S66°15'35"E) from the last mentioned point;

THENCE by property of Roy Bonnell south fifty-two degrees fifty minutes zero zero seconds east (S52°50'00"E) thirty-one decimal eight zero (31.80) metres, south forty degrees forty-three minutes zero zero seconds east (S40°43'00"E) seventy-one decimal nine zero (71.90) metres, north fifty-two degrees fifty minutes zero zero seconds east (N52°50'00"E) thirty-three decimal three zero (33.30) metres;

THENCE along the said southern limit of Hunt's Lane along the arc of a curve having a radius of two hundred and forty decimal zero nine (240.09) metres to a point, the said point being distant twelve decimal six zero (12.60) metres as measured on a bearing of south fifty-three degrees fifteen minutes zero zero seconds east (S53°15'00"E) from the last mentioned point;

THENCE by property of Eric Hunt south forty-three degrees fifteen minutes thirty seconds west (S43°15'30"W) twenty-one decimal three two (21.32) metres, south thirty-seven degrees thirty-two minutes zero zero seconds east (S37°32'00"E) nine decimal zero eight (9.08) metres, south zero degrees twenty three minutes ten seconds east (S0°23'10"E) fourteen decimal five three (14.53) metres, south eight degrees sixteen minutes fifteen seconds west (S8°16'15"W) twenty-two decimal seven zero (22.70) metres, south eighty-five degrees zero six minutes fifty-five seconds east (S85°06'55"E) six decimal six six (6.66) metres, north sixty-two degrees forty-nine minutes fifty seconds east (N62°49'50"E) five decimal nine three (5.93) metres, north fifty-one degrees fifty-five seconds fifty-five seconds east (N51°55'55"E) twenty-two decimal one nine (22.19) metres;

THENCE by property of DENISE LEONARD south seventy-three degrees forty-nine minutes zero five seconds east (S73°49'05"E) sixty-six decimal eight three (66.83) metres;

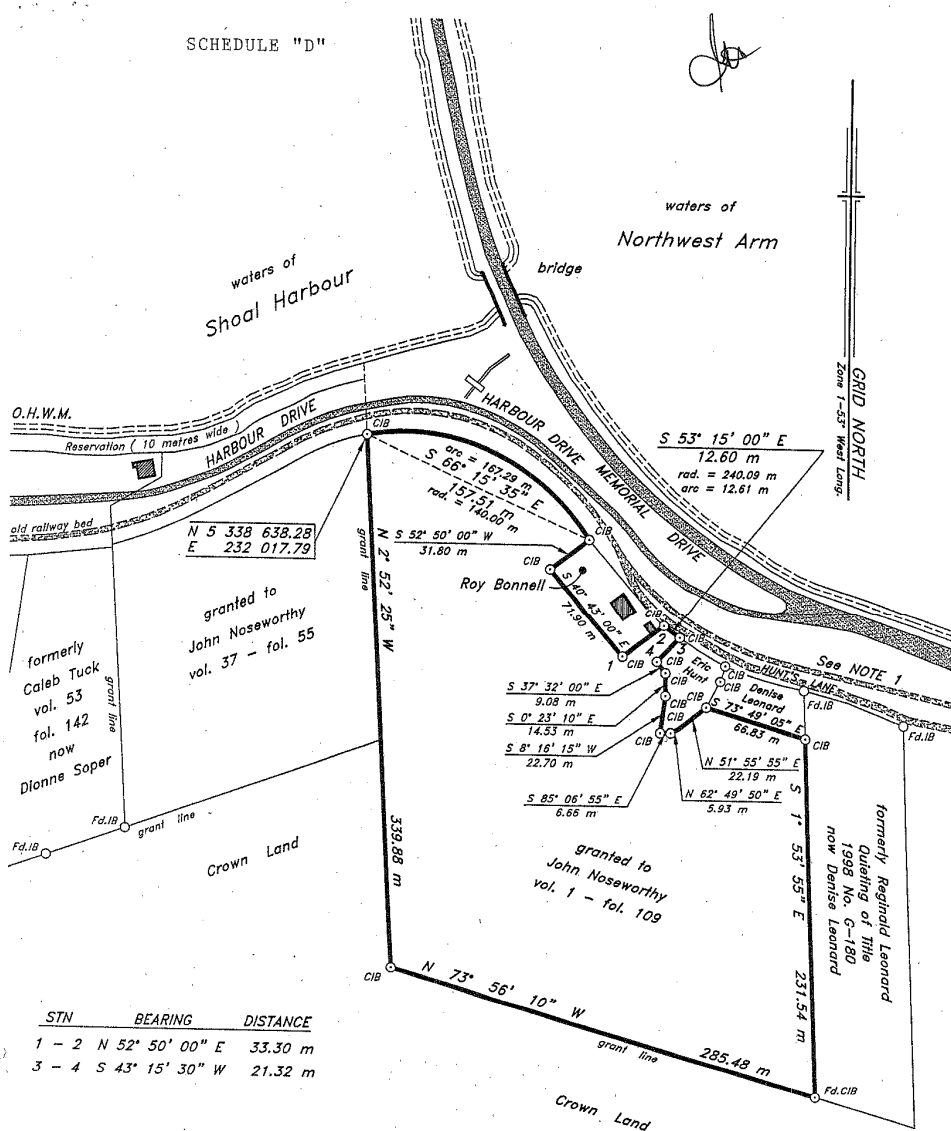
THENCE by property formerly Reginald Leonard (Quieting of Title 1998 No. G-180) now DENISE LEONARD south one degree fifty-three minutes fifty-five seconds east (S1°53'55"E) two hundred and thirty-one decimal five four (231.54) metres;

THENCE by Crown Land north seventy-three degrees fifty-six minutes ten seconds west (N73°56'10"W) two hundred and eighty-five decimal four eight (285.48) metres;

THENCE by Crown Land and by property granted to John Noseworthy (vol. 37 - fol. 55) north two degrees fifty-two minutes twenty-five seconds west (N2°52'25"W) three hundred and thirty-nine decimal eight eight (339.88) metres, more or less to the point of beginning and containing an area of 7.9679 hectares.

All bearings refer to the above mentioned Projection.

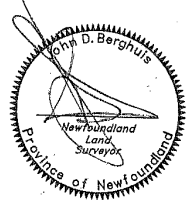
SCHEDULE "D"



STN	BEARING	DISTANCE
1 - 2	N 52° 50' 00" E	33.30 m
3 - 4	S 43° 15' 30" W	21.32 m

Area = 7.9679 hectares

NOTE: CIB CAPPED IRON BAR
 IB IRON BAR
 Fd. FOUND
 - NO SCALE FACTOR USED
 ALL DISTANCES ARE GRID DISTANCES



NOTE 1
 formerly Canadian National Railway
 Right-of-Way (20 metres wide)
 now
 T'Railways Provincial Park
CONTROL MONUMENTS
 (NAD-83)
 78G2018 N 5 338 706.299
 E 232 113.510
 78G2019 N 5 339 129.397
 E 232 174.751

(((CONTROL SURVEYS LTD. NEWFOUNDLAND LAND SURVEYORS 39 MARINE DRIVE, ASA 1M5 - Tel: (709) 466-3666	
Clareville	Newfoundland
SURVEY ON BEHALF OF DENISE LEONARD	
Clareville	Newfoundland
SCALE: 1 : 3000	JOB No.: 2011-229
DATE: November 13, 2012	SURVEY BY: J.D.B.



THE NEWFOUNDLAND AND LABRADOR GAZETTE

PART II

SUBORDINATE LEGISLATION FILED UNDER THE STATUTES AND SUBORDINATE LEGISLATION ACT

Vol. 88

ST. JOHN'S, FRIDAY, MAY 24, 2013

No. 21

NEWFOUNDLAND AND LABRADOR REGULATIONS

NLR 51/13
NLR 52/13



**NEWFOUNDLAND AND LABRADOR
REGULATION 51/13**

*Cape St. George Municipal Planning Area
under the
Urban and Rural Planning Act, 2000*

(Filed May 21, 2013)

Under the authority of section 11 of the *Urban and Rural Planning Act, 2000*, I define the following area as the Cape St. George Municipal Planning Area.

Dated at St. John's, May 8, 2013.

Kevin O'Brien
Minister of Municipal Affairs

PLANNING AREA

Beginning at a point on the highwater mark of the southern shoreline of the Port au Port Peninsula in St. George's Bay, that point being the most easterly point on the Cape St. George Municipal Boundary;

Then north 27° 30' west 2,657 metres, more or less, to a point;

Then south 86° 01' west 3,975 metres, more or less, to a point;

Then north 75° 22' west 1,045 metres, more or less, to a point;

The north 81° 45' west, 1,538 metres, more or less, to a point;

Then north 62° 04' west 1,297 metres, more or less, to a point;

Then north 25° 32' west 778 metres, more or less, to a point on the high water mark of the Port au Port Peninsula on the western shoreline;

Then in a southwesterly direction along the sinuosities of the shoreline to the westernmost extremity of the Port au Port Peninsula;

Then in an northeasterly direction along the sinuosities of the shoreline, passing Cape St. George, Petit Jardin, Red Brook, DeGrau and Marches Point, to the point of beginning.

All bearings refer to Grid North and as with distances given are subject to approximation as delineated on the 1:50000 National Topographical Series, NTS, digital mapping; UTM, NAD 83.

©Queen's Printer



**NEWFOUNDLAND AND LABRADOR
REGULATION 52/13**

*Interim Development Regulations, 2003
(Amendment)
under the
Urban and Rural Planning Act, 2000*

(Filed May 21, 2013)

Under the authority of section 34 of the *Urban and Rural Planning Act, 2000*, I make the following regulations.

Dated at St. John's, May 8, 2013.

Kevin O'Brien
Minister of Municipal Affairs

REGULATIONS

Analysis

1. Sch. Amdt.

NLR 137/03
as amended

1. The Schedule to the *Interim Development Regulations, 2003* is amended by adding the words "Cape St. George Municipal Planning Area" immediately before the words "Fogo Island Municipal Planning Area".

©Queen's Printer

Index

PART I

Corporations Act – Notice	181
Highway Traffic Act – Notice	187
Mechanics’ Lien Act – Notice	194
Quieting of Titles Act – Notices	194
Urban and Rural Planning Act, 2000 – Notices	194

PART II

CONTINUING INDEX OF SUBORDINATE LEGISLATION

Title of Act and Subordinate Legislation made thereunder	CNLR or NL Reg.	Amendment	NL Gazette Date & Page No.
Urban and Rural Planning Act, 2000			
Cape St. George Municipal Planning Area	NLR 51/13	New	May 24/13 p. 265
Interim Development Regulations, 2003	NLR 52/13	Amends NLR 137/03 Sch. Amdt.	May 24/13 p. 267

The Newfoundland and Labrador Gazette is published from the Office of the Queen's Printer.

Copy for publication must be received by **Friday, 4:30 p.m.**, seven days before publication date to ensure inclusion in next issue.

Advertisements must be submitted in either PDF format or as a MSWord file. When this is not possible, advertisements must be either typewritten or printed legibly, separate from covering letter. Number of insertions required must be stated and the names of all signing officers typewritten or printed.

Copy may be mailed to the address below, faxed to (709) 729-1900 or emailed to queensprinter@gov.nl.ca.

Advertising rates are available upon request. Subscription rate for *The Newfoundland and Labrador Gazette* is \$125.00 for 52 weeks plus applicable tax (\$131.25). Weekly issues of \$3.00 per copy, plus tax payable in advance.

All cheques, money orders, etc., should be made payable to THE NEWFOUNDLAND EXCHEQUER ACCOUNT and all correspondence should be addressed to: Office of the Queen's Printer, P. O. Box 8700, Ground Floor, East Block, Confederation Building, St. John's, NL A1B 4J6. Telephone (709) 729-3649. Fax: (709) 729-1900.

Web Site: <http://www.servicenl.gov.nl.ca/printer/index.html>

**Place your order by contacting:
Office of The Queen's Printer
Confederation Building, East Block
St. John's, NL A1B 4J6
Telephone: (709) 729-3649 Fax: (709) 729-1900
email: queensprinter@gov.nl.ca**

**Government Information Product
Publication Rate Mail
G.S.T. # R107442683**

All requests for Subscription and Legislation MUST be prepaid.

**STATUTES OF NEWFOUNDLAND AND LABRADOR
2013**

Bill	Act	Chapter
	First Session, 47th General Assembly 62 Elizabeth II, 2013	2013
45	<i>Animal Health and Protection (Amendment) Act</i>	1
62	<i>Interim Supply Act, 2013 (In force Apr. 1/13)</i>	2
	(ASSENTED TO MARCH 21, 2013)	
	Second Session, 47th General Assembly 62 Elizabeth II, 2013	
1	<i>Canada-Newfoundland and Labrador Atlantic Accord Implementation Newfoundland and Labrador (Amendment) Act (To be Proclaimed)</i>	3
2	<i>Supply Act, 2013</i>	4
3	<i>Revenue Administration (Amendment) Act (Considered in force Mar. 27/13)</i>	5
4	<i>Revenue Administration (Amendment) Act No.2 (In force Jul. 1/3)</i>	6
7	<i>Revenue Administration (Amendment) Act No.3 (Considered in force Apr. 1/13)</i>	7
	(ASSENTED TO MAY 16, 2013)	

* Bills amended in Committee of the Whole House.

In researching the law readers should note that the following Statutes of Newfoundland and Labrador, 2013 include amendments to other Statutes as listed below:

Chapter 3	<u><i>Canada-Newfoundland and Labrador Atlantic Accord Implementation Newfoundland and Labrador (Amendment) Act - (To be Proclaimed) Labour Relations Act Workplace Health, Safety and Compensation Act</i></u>
-----------	---

This list was prepared by the Office of the Legislative Counsel.

Questions or omissions should be brought to the attention of that Office.

Office of the Legislative Counsel
Department of Justice
Government of Newfoundland and Labrador
4th Floor East Block, Confederation Building
P.O. Box 8700
St. John's, NL A1B 4J6
F 729.729.2129
legcounsel@gov.nl.ca
www.assembly.nl.ca/legislation/