

No Subordinate Legislation  
received at  
time of printing



# THE NEWFOUNDLAND AND LABRADOR GAZETTE

## PART I

PUBLISHED BY AUTHORITY

Vol. 88

ST. JOHN'S, FRIDAY, JULY 19, 2013

No. 29

### CORPORATIONS ACT

*Corporations Act* - Section 393

Local Incorporations

For the Month of: May 2013

Date	Number	Company Name			
			2013-05-06	70094	S.C. Electrical Inc.
			2013-05-07	70106	CANADA INTERNATIONAL FOOD GROUP INC
			2013-05-07	70108	DYNAMIC HAULAGE LTD.
			2013-05-07	70098	OCEAN ELECTRIC LTD
			2013-05-07	70107	THE MUSIC CORNER INC.
2013-05-01	70071	COUNTRY CLEANERS INC.	2013-05-07	70109	TRIPEN HOCKEY GROUP INC.
2013-05-01	70074	LABRADOR EMERGENCY EQUIPMENT RENTALS INC.	2013-05-07	70105	WANDERING BRUSH CORP
			2013-05-07	70102	70102 NEWFOUNDLAND AND LABRADOR INC.
2013-05-02	70072	M&E Digging Inc.			Arnold's Cove Inn Inc.
2013-05-02	70073	LHP Holdings Enterprises Ltd.	2013-05-07	70103	ARC HOLDINGS LIMITED
2013-05-02	70080	PRG HOLDINGS LTD.	2013-05-08	70122	DR. KHI KHONG JONG
2013-05-03	70090	WEB QUARTERS INC.	2013-05-08	70124	PROFESSIONAL MEDICAL CORPORATION
2013-05-03	70081	In a Pinch Catering Inc.			DR. M. MAUREEN DUNNE
2013-05-06	70096	70096 NEWFOUNDLAND AND LABRADOR INC.	2013-05-08	70125	PROFESSIONAL MEDICAL CORPORATION
2013-05-06	70100	FISHERMAN'S COMMITTEE OF LEADING TICKLES			DR. SUHASINI DATAR
		GLOVERS HARBOUR INC	2013-05-08	70123	PROFESSIONAL MEDICAL CORPORATION
2013-05-06	70101	INNU DMC SAFETY CONSULTING INC.			IMMANUEL TRAVEL INC.
2013-05-06	70095	LARRY FOLEY HOLDINGS LIMITED	2013-05-08	70120	TLC CONTRACTING LIMITED
			2013-05-08	70119	Moulton's Self Storage Inc.
2013-05-06	70097	ROYAL GROCERY LTD.	2013-05-08	70110	Stillwater R.V. Park Ltd.
2013-05-06	70089	Tuck's Bee Better Farm Inc.	2013-05-08	70111	JTZ Safety Limited
2013-05-06	70091	GMJ Beneficiate Ltd.	2013-05-08	70112	Philrobden Janitorial Limited
2013-05-06	70092	SamKat Holdings Inc.	2013-05-08	70113	
2013-05-06	70093	TPW Pharmacy Inc.			

THE NEWFOUNDLAND AND LABRADOR GAZETTE  
July 19, 2013

2013-05-09	70130	CANADIAN AV LABRADOR INC.	2013-05-16	70178	HOMEWORX RENOVATIONS LTD.
2013-05-09	70126	ELLSWORTH INDUSTRIES LIMITED	2013-05-16	70180	JDBM MANAGEMENT INC.
2013-05-09	70128	ROBINSONS PASTURE ASSOCIATION INC.	2013-05-16	70175	North Star Associates Inc.
2013-05-09	70117	Belgor Capital Inc.	2013-05-16	70176	Turner Buildings Limited
2013-05-09	70121	EarthWorks Excavating Ltd.	2013-05-16	70177	KAKE Enterprises Inc.
2013-05-10	70137	MOORE PARC DEVELOPMENTS INC.	2013-05-17	70188	CRANBERRY ASSOCIATION OF NEWFOUNDLAND & LABRADOR INC.
2013-05-10	70140	POINT LEAMINGTON AMBULANCE SERVICE INC.	2013-05-17	70189	J & L ROOFING LTD.
2013-05-10	70136	ROSA BROTHERS TILING LTD.	2013-05-17	70186	SHARPE'S EXPERT EXCAVATION LIMITED
2013-05-10	70134	SOCCERTOTS NL INC.	2013-05-17	70183	Champion Plumbing Limited
2013-05-10	70135	VANTAGE CONSTRUCTION LTD.	2013-05-21	70184	Red Line Contractors Inc.
2013-05-10	70129	DARTS - SPORTING GROUP FACILITATION – INCORPORATED	2013-05-21	70185	70185 NEWFOUNDLAND & LABRADOR LTD.
2013-05-10	70131	NICHOLS OUTFITTING INC.	2013-05-21	70190	Larry Roche Fishing Enterprise Inc.
2013-05-13	70146	PLATYPUS CONSTRUCTION INC.	2013-05-21	70191	70191 NEWFOUNDLAND & LABRADOR INC.
2013-05-13	70132	Barclay Associates Ltd.	2013-05-21	70192	70192 NEWFOUNDLAND & LABRADOR LTD.
2013-05-13	70133	GANDER DANCE STUDIO LTD.	2013-05-21	70193	Above All Safety Training Inc.
2013-05-13	70142	70142 NEWFOUNDLAND & LABRADOR CORP.	2013-05-22	70194	K.E.A.D. Enterprises Ltd.
2013-05-13	70143	DOWN EAST HOLDINGS INC.	2013-05-22	70201	A TOUCH OF CLASS PHOTOGRAPHY INC.
2013-05-13	70144	MYLES-WHIFFEN, LABS INC.	2013-05-22	70203	BRISTOL'S HOPE COMMUNITY DEVELOPMENT ASSOCIATION INC.
2013-05-13	70145	MONTAUK BEACH Inc.	2013-05-22	70204	CP REIT NL PROPERTIES LIMITED
2013-05-14	70158	70158 NEWFOUNDLAND AND LABRADOR LIMITED	2013-05-22	70207	DARLENE'S GROCETERIA LIMITED
2013-05-14	70160	70160 NEWFOUNDLAND AND LABRADOR LIMITED	2013-05-22	70202	DELUXE FLOATING DOCK INC.
2013-05-14	70161	70161 NEWFOUNDLAND AND LABRADOR LIMITED	2013-05-22	70205	HOME CHECK NL INC.
2013-05-14	70166	70166 NEWFOUNDLAND AND LABRADOR LIMITED	2013-05-22	70197	LJZO Financial Limited
2013-05-14	70163	BACK COVE INVESTMENTS LTD.	2013-05-22	70198	Wiseman's Garage Limited
2013-05-14	70154	LORDEN CONTRACTING LTD.	2013-05-22	70199	Wheels In Motion Inc.
2013-05-14	70162	MING'S BIGHT RECREATION INC.	2013-05-22	70200	Carol Lake Industrial Limited
2013-05-14	70164	OCEANSIDE CABINS INC.	2013-05-23	70218	CABOT TIRE & AUTO REPAIR LIMITED
2013-05-14	70165	OUT OF THE WOODS INC.	2013-05-23	70212	DERRICK HICKS DISTRIBUTING LTD.
2013-05-14	70155	VIKING CARPENTRY & CONSTRUCTION LTD.	2013-05-23	70224	DR. C. MAEVE KELLY PROFESSIONAL MEDICAL CORPORATION
2013-05-14	70150	Shanti Spa and Yoga Shala Inc.	2013-05-23	70220	DR. GABRIEL WOOLLAM P.M.C. INC.
2013-05-14	70151	Harbour Excavating Ltd.	2013-05-23	70213	EAST TO WEST INVESTMENTS INC.
2013-05-14	70152	SRL Electrical Inc.	2013-05-23	70223	MI'KMAQ FIRST NATION'S ASSEMBLY OF NEWFOUNDLAND, INC.
2013-05-14	70153	WEST COAST BUS TOURS INC.	2013-05-23	70211	NGC DIVING INCORPORATED
2013-05-15	70173	BRIDGEWATER DEVELOPMENT INC.	2013-05-23	70209	BAMS Piping & Mechanical Ltd.
2013-05-15	70171	SUSHI KING INC.	2013-05-23	70210	Realty Print Inc.
2013-05-15	70174	TNA LANDSCAPING/ HYDROSEEDING INC.	2013-05-24	70230	PAUL D. HICKEY PROFESSIONAL CORPORATION
2013-05-15	70168	70168 NEWFOUNDLAND & LABRADOR LTD.	2013-05-24	70225	JS MacIsaac Contracting Ltd.
2013-05-15	70169	TRUE COMFORT INC.	2013-05-24	70226	Grand Homes Inc.
2013-05-15	70170	CGAA ENTERPRISES LTD.			
2013-05-16	70179	EAT CLEAN HEALTHY GRILL INC.			

THE NEWFOUNDLAND AND LABRADOR GAZETTE  
July 19, 2013

2013-05-27	70240	BLUE WATER INVESTMENTS NL LTD.	2013-05-31	70286	ROCK HARD EPOXY INC.
2013-05-27	70234	DEZEEUW HOLDINGS (2013) LIMITED	2013-05-31	70298	SANDAV HOLDINGS LIMITED
2013-05-27	70232	R.D.S. CONTRACTING LIMITED	2013-05-31	70290	THE S.S. KYLE HISTORICAL FOUNDATION INC.
2013-05-27	70233	RALHAN INTERNATIONAL (2013) INC.	2013-05-31	70277	RESILIENT Business Continuity Management Incorporated
2013-05-27	70231	70231 NEWFOUNDLAND AND LABRADOR INC.	2013-05-31	70279	Rock Automotive Centre and Diagnostic Services Incorporated
2013-05-28	70251	ACRC HOLDINGS INCORPORATED	2013-05-31	70282	CJP Inspections Inc.
2013-05-28	70245	AGVITUK SIVUMUAK SOCIETY INC.	2013-05-31	70283	Innu-Inuit Plexus GP Inc.
2013-05-28	70244	CARTWRIGHT/LANSE-AU-CLAIR WASTE MANAGEMENT INC.	Total Incorporations: 157		
2013-05-28	70246	GARDINER CONSULTING INC.	<hr/> <i>Corporations Act - Section 331</i>		
2013-05-28	70250	LANCASTER SERVICES LIMITED	Local Revivals		
2013-05-28	70243	REID GROUP INC.	For the Month of: May 2013		
2013-05-28	70239	RT Fullflow Designs LTD.	<b>Date</b>	<b>Number</b>	<b>Company Name</b>
2013-05-28	70241	Belvedere Orphanage Fund Inc.	2013-05-17	37893	Fisherman's Museum Committee Inc
2013-05-28	70242	Misericordia Mission Fund Inc.	2013-05-22	51076	NEWFOUNDLAND HARVESTERS LIMITED
2013-05-29	70264	70264 NEWFOUNDLAND AND LABRADOR INC.	2013-05-22	5286	SPRUCE GROVE CLUB LIMITED
2013-05-29	70265	CAPSTAN ISLAND FISHERMENS COMMITTEE INC.	Total Revivals: 3		
2013-05-29	70249	B and K Contracting & Consulting Limited	<hr/> <i>Corporations Act - Section 296 and 393</i>		
2013-05-29	70253	Big Land Roofing Limited	Local Continuances		
2013-05-29	70255	Fast Offshore Supply Newfoundland Inc.	For the Month of: May 2013		
2013-05-29	70256	Alyssa's Property Services Pro. Inc.	<b>Date</b>	<b>Number</b>	<b>Company Name</b>
2013-05-29	70257	Fast Offshore Services Newfoundland Limited	2013-05-14	70156	RV DESIGNS INC.
2013-05-29	70258	AFFORDABLE CONTRACTING LIMITED	Total Continuances: 1		
2013-05-29	70259	Jett's Fuels Limited	<hr/> <i>Corporations Act - Section 286</i>		
2013-05-29	70260	Stanford Marketing Inc.	Local Amendments		
2013-05-29	70261	70261 NEWFOUNDLAND AND LABRADOR INC.	For the Month of: May 2013		
2013-05-29	70262	Newfoundland and Labrador Archaeological Society, Inc.	<b>Date</b>	<b>Number</b>	<b>Company Name</b>
2013-05-30	70276	BROWNIE'S ENTERPRISES INC.	2013-05-01	67307	67307 NEWFOUNDLAND AND LABRADOR LIMITED
2013-05-30	70275	NFLD. HARNESS HORSE OWNERS ASSOCIATION INC.	2013-05-01	69899	DR. L. LOTFI-SEYSAN PROFESSIONAL MEDICAL CORPORATION
2013-05-30	70270	70270 NEWFOUNDLAND & LABRADOR INC.	2013-05-01	49187	LEAPING SILVER INC
2013-05-30	70271	PAEDO CONSTRUCTION INC.	2013-05-02	65340	MEWS CONSULTING & INVESTMENTS LTD.
2013-05-30	70272	Gutter Brudders Continuous Eavestrough Incorporated	2013-05-03	66139	HARVCO ENTERPRISES INC.
2013-05-30	70273	JJShaw Holdco Inc.	2013-05-06	27585	Cro-at Developments Inc.
2013-05-30	70274	TGO Holdco Inc.	2013-05-06	54953	Duane M Phillips Group Inc.
2013-05-31	70288	BIG EAST ENGINEERING INC.	2013-05-06	70054	MJL HOLDINGS INC.
2013-05-31	70291	BRITTANY'S CONVENIENCE INC.	2013-05-07	8738	Northcott Holdings Ltd.
2013-05-31	70289	DYNO NOBEL BAFFIN ISLAND INC.	2013-05-07	26505	SHOAL HR SAND PRODUCTS LTD
2013-05-31	70287	MIKES RENOVATIONS & RESTORATIONS LTD.	2013-05-08	59732	CHRIS BROWNE DENTURE CLINIC INC.
			2013-05-08	69988	iTranslation Services Ltd.

THE NEWFOUNDLAND AND LABRADOR GAZETTE  
July 19, 2013

2013-05-09	68286	68286 NEWFOUNDLAND & LABRADOR INC.	2013-05-30	70220	DR. GABRIEL WOOLLAM P.M.C. INC.
2013-05-09	19650	Brigus Historical and Conservation Society	2013-05-30	9568	HARRIS L. SMITH LIMITED
2013-05-09	39027	CMI SOLUTIONS INC.	2013-05-30	62501	MKCH HOLDINGS INC.
2013-05-09	36929	HAMPTON BUILDING SYSTEMS INC.	2013-05-31	70069	62116 NEWFOUNDLAND & LABRADOR INC.
2013-05-09	61022	HOBBLES TO HOMES INC.	2013-05-31	69495	Dr. Ian Wilson Professional Medical Corporation
2013-05-09	67158	Northern Welding Ltd.			
2013-05-14	56051	IVC Consulting Incorporated	2013-05-31	61461	E. V. HERITAGE COUNCIL INC.
2013-05-14	41231	Pondside Holdings Inc.	2013-05-31	67632	FOG PATCH PRODUCTION INC.
2013-05-14	6387	ST. JOHN'S RETIRED CITIZENS' ASSOCIATION INC.	2013-05-31	41800	HOUSEHOLD MOVERS AND SHIPPERS LIMITED
2013-05-15	16533	DINNVEST HOLDINGS LTD.	2013-05-31	58422	JW TRASK GROUP INC.
2013-05-15	70124	DR. KHI KHONG JONG PROFESSIONAL MEDICAL CORPORATION	2013-05-31	63437	SMART CHARGE INC.
			Total Amendments: 62		
2013-05-16	69388	Atlantic Wave Limousine Inc.			
2013-05-16	13579	Town & Country Inn Limited			
2013-05-16	62274	VRI Carpentry Ltd			
2013-05-17	70158	70158 NEWFOUNDLAND AND LABRADOR LIMITED			
2013-05-17	53554	GLENN'S HELPING HAND FOUNDATION INC.			
2013-05-17	62569	GRAND RIVER FAMILY RESOURCE CENTRE INC.			
2013-05-17	70033	HOT SOUP COOL JAZZ INC.			
2013-05-17	66886	LE ROX HOLDINGS INC.	2013-05-08	51459	51459 NEWFOUNDLAND AND LABRADOR INC.
2013-05-17	13457	MOSS LIMITED			
2013-05-22	48080	11320 Newfoundland Limited	2013-05-08	53907	H & D OFFLOADING LIMITED
2013-05-22	64605	Central Newfoundland Motors Limited	2013-05-08	66905	XTREME SALON & TANNING INC.
2013-05-22	62092	Central Newfoundland Rentals Limited	2013-05-09	42774	STRATTONS MARINE & HARDWARE SALES & SERVICE INC.
2013-05-22	60808	KAIZEN - MOVE IT INCORPORATED	2013-05-10	55779	GEROYS AUTO SALES LTD.
2013-05-22	51076	NEWFOUNDLAND HARVESTERS LIMITED	2013-05-10	53498	MOXY MARKETING INC.
			2013-05-13	55198	INNUEX EXPLORATION SERVICES LTD.
2013-05-23	61319	61319 NEWFOUNDLAND AND LABRADOR LIMITED			
2013-05-23	70158	70158 NEWFOUNDLAND AND LABRADOR LIMITED	2013-05-14	66494	DR. STEPHEN WALTER TUCKER PROFESSIONAL MEDICAL CORPORATION
2013-05-23	45375	BLJ Holdings Inc.	2013-05-14	47930	Southern Cross Stables Inc.
2013-05-23	69758	NACHVAK SUPPLY & SERVICES INC.	2013-05-15	49923	DR. BARRIE MARTIN PROFESSIONAL MEDICAL CORPORATION
2013-05-23	4670	NEWFOUNDLAND HORTICULTURAL SOCIETY			
2013-05-23	20574	P & R STORES LIMITED	2013-05-15	43125	LABRADOR STRAITS SOCIAL EDUCATION CORPORATION
2013-05-23	59692	RALHAN INVESTMENTS LIMITED	2013-05-15	44104	LR/HR Consultants Inc.
			2013-05-17	61473	ATLANTIC WELDING LTD.
2013-05-23	67204	SKINCARE STUDIO INC.	2013-05-17	67245	COLIN HOWSE CONSULTING, INC.
2013-05-24	68984	DR. VINCENT HEALE P.M.C. INC.			
			2013-05-22	28811	BRODAW ENTERPRISES LTD.
2013-05-24	17359	East Coast Catering Limited	2013-05-22	63754	CASE Technical Construction Inc.
2013-05-24	69081	NTW CONSULTING INC.	2013-05-22	13423	The Rental Shop Limited
2013-05-28	15297	Mugford's Contracting Limited	2013-05-23	44077	Crockwell Foods Ltd.
2013-05-29	51237	51237 NEWFOUNDLAND & LABRADOR INC.	2013-05-24	51820	CONTROLS SOLUTIONS GROUP INC.
2013-05-29	27736	EAST WEST CONSULTING LIMITED	2013-05-24	37219	DENTAL HYGIENE CONSULTING INC.
2013-05-30	64892	Distinctive Auto Care Ltd	2013-05-24	62832	OSHE-PRO INC.
			2013-05-24	42999	TRI-LAB CONSTRUCTION LTD.

*Corporations Act - Section 335*  
Local Dissolutions  
For the Month of: May 2013

Date	Number	Company Name
2013-05-01	67654	HELIOS MEDIA INC.
2013-05-07	47766	Aboriginal Transportation Systems Limited
2013-05-08	51459	51459 NEWFOUNDLAND AND LABRADOR INC.
2013-05-08	53907	H & D OFFLOADING LIMITED
2013-05-08	66905	XTREME SALON & TANNING INC.
2013-05-09	42774	STRATTONS MARINE & HARDWARE SALES & SERVICE INC.
2013-05-10	55779	GEROYS AUTO SALES LTD.
2013-05-10	53498	MOXY MARKETING INC.
2013-05-13	55198	INNUEX EXPLORATION SERVICES LTD.
2013-05-14	66494	DR. STEPHEN WALTER TUCKER PROFESSIONAL MEDICAL CORPORATION
2013-05-14	47930	Southern Cross Stables Inc.
2013-05-15	49923	DR. BARRIE MARTIN PROFESSIONAL MEDICAL CORPORATION
2013-05-15	43125	LABRADOR STRAITS SOCIAL EDUCATION CORPORATION
2013-05-15	44104	LR/HR Consultants Inc.
2013-05-17	61473	ATLANTIC WELDING LTD.
2013-05-17	67245	COLIN HOWSE CONSULTING, INC.
2013-05-22	28811	BRODAW ENTERPRISES LTD.
2013-05-22	63754	CASE Technical Construction Inc.
2013-05-22	13423	The Rental Shop Limited
2013-05-23	44077	Crockwell Foods Ltd.
2013-05-24	51820	CONTROLS SOLUTIONS GROUP INC.
2013-05-24	37219	DENTAL HYGIENE CONSULTING INC.
2013-05-24	62832	OSHE-PRO INC.
2013-05-24	42999	TRI-LAB CONSTRUCTION LTD.

THE NEWFOUNDLAND AND LABRADOR GAZETTE  
July 19, 2013

2013-05-24	41517	W & J TRUCKING LTD.	23273		DAWE'S PLUMBING & HEATING (1988) LIMITED
2013-05-27	60961	M & G Renovations Ltd.			
2013-05-28	55729	T.J. CARPENTRY LTD.			
2013-05-29	62176	4K CONTRACTING LTD.	2013-05-31	70300	TRIPLE HOLDINGS INC.
2013-05-29	62932	Stockley Enterprises Inc.			
2013-05-30	3972	L. Bartlett Inc.	From:	27695	DAVESS ENTERPRISES LIMITED
2013-05-31	62556	Arctic Marine Operations Consultancy Ltd.		23840	TRIPLE HOLDINGS INCORPORATED
2013-05-31	3358	FLEXO-PAK CORPORATION LIMITED			
2013-05-31	65253	J. & J. Nash Investments Inc.	Total Amalgamations: 5		
2013-05-31	53473	KAN-KLEEN CARPET CARE LTD.			
2013-05-31	58516	RITEWAY PAINTING CONTRACTORS LIMITED			
2013-05-31	30356	TARRA DEVELOPMENTS LTD.			
Total Dissolutions: 36			<b>Number</b>		<b>Company Name</b>
			69899		DR. L. LOTFI-SEYSAN PROFESSIONAL MEDICAL CORPORATION
<i>Corporations Act - Section 299</i>			2013-05-01	From:	DR. L. L. SEYSAN PROFESSIONAL MEDICAL CORPORATION
Local Discontinuances					
For the Month of: May 2013					
<b>Date</b>	<b>Number</b>	<b>Company Name</b>	65340		MEWS CONSULTING & INVESTMENTS LTD.
2013-05-01	45249	Botwood Funeral Home (2001) Limited			
2013-05-01	15643	G & P Limited	70054		MJL HOLDINGS INC.
2013-05-01	21143	GORDON WOOLFREY FUNERAL HOMES LIMITED	2013-05-06	From:	MJH HOLDINGS INC.
2013-05-01	69780	TAK Holdings Inc.	60808		KAIZEN - MOVE IT INCORPORATED
Total Discontinuances: 4			2013-05-22	From:	MOVE IT INCORPORATED
<i>Corporations Act - Section 294</i>			69758		NACHVAK SUPPLY & SERVICES INC.
Local Amalgamations			2013-05-23	From:	NACHVAK SUPPLY & SERVICES INC.
For the Month of: May 2013					
<b>Date</b>	<b>Number</b>	<b>Company Name</b>	67204		SKINCARE STUDIO INC.
2013-05-01	70079	MCCARTHY'S FISHERIES LTD.	2013-05-23	From:	SUNSHINE SAFETY INC
From:	66355	B&A ENTERPRISES LTD.			
	35070	McCarthy's Fisheries Ltd.	68984		DR. VINCENT HEALE P.M.C. INC.
2013-05-01	70076	PRINCIPAL HOLDINGS LIMITED	2013-05-24	From:	DR. VINCENT HEALE & DR. NOREEN FARDY P.M.C. INC.
From:	58635	GANDER HOLDINGS LTD.			
	66389	PRINCIPAL HOLDINGS LIMITED	69081		NTW CONSULTING INC.
2013-05-01	70078	WESTLINK INVESTMENTS LIMITED	2013-05-24	From:	69081 NEWFOUNDLAND & LABRADOR INC.
From:	70018	70018 NEWFOUNDLAND AND LABRADOR INC.	58422		JW TRASK GROUP INC.
	30185	WESTLINK INVESTMENTS LIMITED	2013-05-31	From:	PERFORMANCE MORTGAGES & FINANCE INC.
			Total Name Changes: 9		
2013-05-31	70299	DAWE'S PLUMBING & HEATING (1988) LIMITED			
From:	69520	69520 NEWFOUNDLAND & LABRADOR INC.			



THE NEWFOUNDLAND AND LABRADOR GAZETTE  
July 19, 2013

68587		HEART AND STROKE FOUNDATION OF CANADA	62686 64585		7726830 CANADA INC. CGG SERVICES (CANADA) INC.
2013-05-08	From:	FONDATION DES MALADIES DU COEUR ET DE L'AVC DU CANADA HEART AND STROKE FOUNDATION OF CANADA	2013-05-31	From:	CGGVERITAS SERVICES (CANADA) INC.
Total Name Changes: 13					
<i>Corporations Act - Section 294</i>					
Extra-Provincial Registrations for Amalgamation					
For the Month of: May 2013					
62114		ROCKWELL AUTOMATION CANADA HOLDINGS INC.	<b>Date</b> 2013-05-02	<b>Number</b> 70084	<b>Company Name</b> HORIZONS ETFS MANAGEMENT (CANADA) INC.
2013-05-08	From:	ROCKWELL AUTOMATION CANADA INC.	From:	54521	HORIZONS EXCHANGE TRADED FUNDS INC./
62451		COMINAR 2 INC. HOMBURG (31) L.P. MANAGEMENT INC.			FONDS NÉGOCIÉS EN BOURSE HORIZONS INC.
2013-05-09	From:				LEGGETT & PLATT CANADA CO./SOCIÉTÉ LEGGETT & PLATT CANADA
62452		COMINAR NF REAL ESTATE HOLDINGS INC.	2013-05-03	70088	LEGGETT & PLATT CANADA CO./SOCIÉTÉ LEGGETT & PLATT CANADA
2013-05-09	From:	HOMBURG (40) L.P. MANAGEMENT INC.	From:	62382	LEGGETT & PLATT CANADA CO./SOCIÉTÉ LEGGETT & PLATT CANADA
70114		MAXAM EXPLOSIVES, INC. MAXAM BULK SERVICES, INC.	2013-05-08	70114	MAXAM EXPLOSIVES, INC.
2013-05-09	From:		From:	51884	MAXAM BULK SERVICES, INC.
414I		AIG INSURANCE COMPANY OF CANADA		56097	MAXAM PRODUCTS INC.
			2013-05-10	70139	EXP SERVICES INC
		LA COMPAGNIE D'ASSURANCE AIG DU CANADA	From:	64918	LES SERVICES EXP INC. EXP SERVICES INC
2013-05-10	From:	CHARTIS INSURANCE COMPANY OF CANADA			LES SERVICES EXP INC.
		COMPAGNIE D'ASSURANCE CHARTIS DU CANADA	2013-05-17	70187	GRANT THORNTON LIMITED
			From:	1266D	Grant Thornton Limited
66767		HORSBURGH & SCOTT- CANADA LTD.	2013-05-23	70214	ROCKWELL AUTOMATION CANADA LTD.
2013-05-21	From:	INDUSTRIAL SERVICE SOLUTIONS (ISS) CANADA LTD.	From:	60049	ICS TRIPLEX ISAGRAF INC.
			2013-05-28	70248	MOORE-MCLEAN INSURANCE GROUP LTD.
67166		KING & BAY WEST MANAGEMENT CORP.	From:	54140	MOORE-MCLEAN CORPORATE INSURANCE LTD.
2013-05-24	From:	FORBES WEST MANAGEMENT CORP.			
			2013-05-28	70254	VALUE VILLAGE CANADA INC.
64006		ALTUS GROUP LIMITED/GROUPE ALTUS LIMITEE	From:	62020	VALUE VILLAGE STORES, INC.
2013-05-29	From:	ALTUS GROUP LIMITED	2013-05-29	70269	GESCO INDUSTRIES INC.
			From:	62951	GESCO INDUSTRIES INC.
55219		GESCO GP ULC	2013-05-31	70292	BP CANADA ENERGY GROUP ULC
2013-05-29	From:	GESCO GP INC.			

From: 64987 BP CANADA ENERGY GROUP  
ULC

2013-05-31 70304 MORPHO CANADA INC.  
From: 62686 7726830 CANADA INC.  
68823 MORPHO CANADA INC.

**URBAN AND RURAL PLANNING ACT, 2000**

**NOTICE OF REGISTRATION  
TOWN OF PARADISE  
DEVELOPMENT REGULATIONS  
AMENDMENT No. 71, 2013**

Total Registrations for Amalgamation: 11

SERVICE NL  
Dean Doyle, Registrar

TAKE NOTICE that the TOWN OF PARADISE Municipal Development Regulations Amendment No. 71, 2013, adopted on the 21<sup>st</sup> day of May, 2013 has been registered by the Minister of Municipal Affairs.

July 19

**CITY OF ST. JOHN'S ACT**



**ST. JOHN'S MUNICIPAL COUNCIL  
NOTICE  
ST. JOHN'S MOBILE VENDING  
(AMENDMENT NO. 1-2013) BY-LAW**

TAKE NOTICE that the ST. JOHN'S MUNICIPAL COUNCIL has enacted the St. John's Mobile Vending (Amendment No.1 - 2013) By-Law.

The said By-Law was passed by Council on the 8<sup>th</sup> day of July, 2013, so as to remove the provision allowing for the use of portable generators and remove the restriction on mobile vending in the vicinity of the St. John's Port Authority restaurants.

All persons are hereby required to take notice that any person who wishes to view such Regulations may view same at the Office of the City Solicitor of the St. John's Municipal Council at City Hall, and that any person who wishes to obtain a copy thereof may obtain it at the said office upon the payment of a reasonable charge as established by the ST. JOHN'S MUNICIPAL COUNCIL for such copy.

Dated this 8<sup>th</sup> day of July, 2013.

CITY OF ST. JOHN'S  
Neil Martin - City Clerk

July 19

In general terms, this Development Regulations Amendment will rezone land located at the intersection of Holland Place and Paradise Road from Residential Medium Density (RMD) to Residential High Density (RHD) to facilitate the development of five (5) single family homes. The proposed single family homes will blend with the single family homes along Paradise Road and will lead into the higher density housing on Holland Place.

The amendments come into effect on the day that this notice is published in *The Newfoundland and Labrador Gazette*. Anyone wishing to inspect a copy of Development Regulations Amendment No. 71, 2013 may do so at the Paradise Town Hall, 28 McNamara Drive, during normal hours of operation.

TOWN OF PARADISE  
Terrilynn Smith - Town Clerk

July 19

**HIGHWAY TRAFFIC ACT**

**TOWN OF VICTORIA  
TRAFFIC REGULATIONS**

**NOTICE**

THE FOLLOWING regulations have been made by the Town Council of the TOWN OF VICTORIA under the provisions of Section 189 of the *Highway Traffic Act* and under section 414 of the *Municipalities Act, 1999*, as amended.

Adopted by the Town Council of the TOWN OF VICTORIA on the 8<sup>th</sup> day of July, 2013.

**TRAFFIC REGULATIONS**

1. These Traffic regulations may be cited as the TOWN OF VICTORIA Traffic Regulations;



2. In these regulations:
- (a) "Act" means Municipalities Act, 1999, as amended;
  - (b) "Council" means the Town Council of Victoria;
  - (c) "Commercial Vehicle" means any vehicle that is used or designed for business use or is used in conjunction with a business, trade, or profession and includes a bus, truck, delivery van or wagon, tractor, truck tractor, and trailer whether attached to a truck or not, heavy equipment, construction equipment, but does not include a passenger car, light truck, or van rated to carry less than 1.5 tonnes or recreational vehicle;
  - (d) "Highway" includes a place, street, road, or way including a structure forming part of the place, road, or way, designed and intended for, or used by, the public for the passage of traffic or the parking of vehicles and includes the highway reservation and all the space between the boundary lines of the place, road, or way including the shoulder of such highway; "motor vehicle" means a vehicle propelled, driven or controlled otherwise than by muscular power
  - (e) "owner" means the person who holds legal title, or in the case of a registered vehicle, the person or other entity to whom such vehicle is registered
  - (f) "Park" means to permit a vehicle, whether occupied or not, to stand otherwise than temporarily for the immediate purpose of and while actually engaged in loading or unloading goods or taking up or setting down passengers or in obedience to traffic regulations or traffic signs or the directions of a traffic tower;
  - (g) "Person" means any person(s,) firm, partnership, association, corporation or any organization of any kind
  - (h) "sign" includes all traffic control signals, warning sign posts, direction posts, lines, marks or other devices for guidance of persons using highways
  - (i) "Town" means the geographical area of the Town of Victoria as defined in the Town of Victoria Order O.C.96-170;
  - (j) "trailer" means a vehicle which has no motive power of its own and which is attached to a truck, or truck tractor or other motor vehicle
  - (k) "vehicle" means a device in, upon or by which a person or thing may be transported or drawn upon a highway and includes trailer
  - (l) "motor vehicle" means a vehicle propelled, driven or controlled otherwise than by muscular power
3. No person shall park a motor vehicle, or trailer either attended or unattended, in any area designated as a fire lane;
4. No person shall park a motor vehicle or trailer so as to obstruct the free passage of traffic on a highway;
5. Regulations 3 and 4 shall not apply to ambulances or firefighting apparatus or to motor vehicles operated by medical doctors, nurses, clergy, police or members of the fire department, when at the scene of an emergency;
6. (a) No person shall park a commercial motor vehicle on any highway in any residential zone in the town, unless a permit for the parking has been issued by the Council;
- (b) An application for a permit to park a commercial motor vehicle in a residential zone shall be made to the Council in such form as prescribed by the Council and every applicant for a permit shall furnish with the application such information as Council may determine;
- (c) The Council may attach to the permit such conditions as it deems fit for the parking of any such commercial motor vehicle in a residential zone and may permit parking for such limited time as it deems fit;
- (d) prescribe different classifications of commercial motor vehicles and may attach different conditions to different classifications as it may deem appropriate
- (e) Any such permit may be cancelled and or the conditions thereof be amended by Council at any time as in its sole discretion Council deems fit

7. Regulation 6 shall not apply to:
- (a) Motor vehicles of the Town;
  - (b) Motor vehicles of the Royal Canadian Mounted Police responding to a call;
  - (c) Motor vehicles of the Newfoundland Hydro Corporation, Newfoundland Power, a utility company, or the Victoria Volunteer Fire Department, responding to a call;
  - (d) Ambulances responding to a call;
8. The driver of a commercial motor vehicle, loading or unloading freight within the town shall, if possible, pull the motor vehicle off the highway onto some private parking space. Where this is not possible, the driver shall when loading and unloading freight pull in as near as possible to the curb and load and unload as quickly as possible, but in no case shall a driver place a motor vehicle in such a position as to obstruct the normal flow of traffic;
9. No person shall park a motor vehicle or trailer on any highway in such manner so as to hinder, impede, inconvenience or prevent the plowing and/or removal of snow and or ice from the highway;
10. No person, whether occupant or owner, agent or employee, when keeping a pathway, driveway, or any other portion of land free of snow or ice, shall throw, scoop, dump, or place any snow or ice onto a highway such that it interferes with, hinders, impedes or obstructs in anyway, pedestrian or vehicular traffic
- 11.(a) The Council may cause or permit traffic lights or signs to be placed on or near any highway within the limits of the Town;
- (b) Traffic lights or signs erected or authorized under subsection(1) may be signs for any of the following purposes:
- 1. To regulate the movement of traffic;
  - 2. To indicate the route to be followed by traffic;
  - 3. To restrict or prohibit the use of any part of
  - 4. To indicate maximum speed limits in any area or on any part of any highway within the limits of the Town, so that vehicles driven in excess of such speed shall be taken to have failed to conform to the indication given by the sign;
5. To restrict or prohibit the parking of vehicles in any area or on any part of any highway within the limits of the Town;
6. To restrict or prohibit temporarily the use of any highway, other than a main highway designated as such by the Minister of Transportation and Works, or any part of any highway within the limits of the Town, whenever, owing to the likelihood of danger to the public or serious damage to the highway, it appears to the Council to be necessary; and to limit the loads of vehicles owing to the condition of the highway if the Council deems it necessary, provided that the traffic lights or signs shall not apply to any person granted a permit in writing by the Council to use the highway in case of an emergency:
- 7. To warn users of the highway of the need for special caution;
  - 8. To convey information to users of the highway within the limits of the Town;
  - 9. To set out proper pedestrian crossing on any highway within the limits of the town; and
  - 10. To restrict or reserve specific parking spaces for the sole use of disabled person;
12. (a) No person shall stop, stand, or park a vehicle on a highway so that the vehicle or any part of it is:
- 1. On the sidewalk or an area generally used by or intended for use by pedestrians;
  - 2. In a place in contravention of a traffic control device or sign that gives notice that stopping, standing, or parking is there prohibited or restricted
  - 3. Parked in such a manner as to interfere with, hinder or obstruct the normal flow of traffic;
13. No person shall allow or cause a vehicle to stand, stop or park upon a highway or bridge within the town limits in such a position that it may:
- 1. Interfere with the pedestrian or vehicular traffic;

2. Interfere with the pedestrian or vehicular traffic;
  3. Constitute a hindrance to the maintenance repair or improvement thereof;
  4. Hinder or impede the carrying out of any undertaking of the Council;
14. In the event of any person failing to do anything which under these regulations he ought to have done, the Council may do that act and recover the expenses thereof from the person so in default as a civil debt, and without limiting the generality of the foregoing, where a motor vehicle or trailer is parked or left on a highway in contravention of these regulations, the Council, through its employees, servants, or agents, may cause the motor vehicle or trailer to be removed from the street and impounded at a suitable location and the owner thereof may reclaim the vehicle upon payment of the towing and impounding expenses as may be determined by Council
- 15.(a) The Council may dispose of any vehicle removed and stored under these regulations, if the vehicle is not claimed by the owner in accordance with s.15(b) herein within ninety (90) days of removal and storage
- (b) Prior to the return of the vehicle to its owner the owner shall pay the costs of its removal and storage as determined by the Council and where such costs are not paid by the owner, the Council may sell the vehicle by public sale or public auction to satisfy such costs including the costs of and incidental to the public sale or auction.
16. Neither Council nor its authorized agents shall be responsible for damages caused to any vehicle in the enforcement of these regulations;

These Regulations shall come into effect on the 19<sup>th</sup> day of July, 2013.

TOWN OF VICTORIA  
Arthur Burke – Mayor  
Sharon Snooks – Town Clerk

July 19

---

## LANDS ACT

### NOTICE OF INTENT Lands Act, c36, RSNL 1991, as amended

NOTICE IS HEREBY given that NALCOR ENERGY of St. John's intends to apply to the Department of Environment and Conservation, two months from the publication of this Notice, to acquire title, pursuant to Subsection 7(2)(a) of the Lands Act, to the shoreline reservations, fifteen (15) metres wide, of any and all ponds and streams contained within the hereinafter described parcel of Crown land located on the south side of Route 430 at Shoal Cove in the Electoral District of The Straits – White Bay North for the purpose of an access road. The land is described as follows:

*Bounded on the north by Route 430  
for a distance of 84 metres;  
Bounded on the east by Crown land  
for a distance of 491 metres;  
Bounded on the south by Crown land  
for a distance of 80 metres;  
Bounded on the west by Crown land  
for a distance of 470 metres;  
and containing an area of  
approximately 3.8 hectares.*

The northernmost angle of the herein described parcel having approximate scaled UTM Zone 21 NAD83 coordinates of North 5690659 metres and East 525469 metres.

Any person wishing to object to the application must file the objection, in writing, within one month from the publication of this Notice, with reasons for it, to the Minister of Environment and Conservation, and mail to the nearest Regional Lands Office:

c/o Eastern Regional Lands Office, P.O. Box 8700, 5 Mews Place, St. John's, NL, A1B 4J6

c/o Central Regional Lands Office, P.O. Box 2222, Gander, NL, A1V 1L7

c/o Western Regional Lands Office, P.O. Box 2006, Noton Building, Corner Brook, A2H 6J8

c/o Labrador Regional Lands Office, P.O. Box 3014, Station "B", Happy Valley-Goose Bay, NL, A0P 1E0

For further information on the proposed application, please contact: John Cooper at NALCOR ENERGY. Telephone number: (709) 737-1944.

July 19

---

**QUIETING OF TITLES ACT**

**2013 01G 3191  
IN THE SUPREME COURT OF  
NEWFOUNDLAND AND LABRADOR  
TRIAL DIVISION (GENERAL)**

IN THE MATTER OF the *Quieting of Titles Act*, RSNL 1990 cQ-3, and amendments thereto;

AND IN THE MATTER OF an Application of GARRISON TRUST LTD. (Garrison), of the Town of Conception Bay South, in the Province of Newfoundland and Labrador, Canada;

AND IN THE MATTER OF pieces or parcels of land situate and being on the south side of the Conception Bay Highway, in the Community of Upper Gullies, in the Town of Conception Bay South, in the Province of Newfoundland and Labrador, Canada;

**NOTICE OF APPLICATION**

NOTICE IS HEREBY-GIVEN to all parties, that GARRISON TRUST LTD., claiming to be the owner, has applied to the Supreme Court of Newfoundland and Labrador, Trial Division, to have the title to ALL THAT piece or parcel of land situate and being at Upper Gullies, within the jurisdiction of the Town of Conception Bay South, in the Province of Newfoundland and Labrador, being more particularly described in the Schedule hereunto attached and marked "A", investigated, and, they request a declaration that the said GARRISON TRUST LTD. is the legal and beneficial owner in possession, AND, the said Court having ordered that Notice of the said Application be published as required in the Act.

All persons having title adverse to the title claimed by the GARRISON TRUST LTD. shall file in the Registry of the Supreme Court of Newfoundland and Labrador particulars of such adverse claim and serve the same together with an Affidavit verifying the same, on the undersigned Solicitors for the Applicant on or before the 16<sup>th</sup> day of August, 2013, after which date no party having any claim shall be permitted to file the same or to be heard except by special leave of the Court and subject to such conditions as the Court may deem just.

All such adverse claims shall then be investigated in such manner as the said Supreme Court may direct.

DATED at the Town of Conception Bay South, in the Province of Newfoundland and Labrador, this 11<sup>th</sup> day of July, 2013.

ROBERT R. REGULAR, PLC INC.  
Solicitors for the Applicant  
PER: Robert R. Regular

ADDRESS FOR SERVICE:  
P.O. Box 14002, Stn. Manuels  
131 Conception Bay Highway  
Conception Bay South, NL A1W 3J1

Tel: (709) 834-2132  
Fax: (709) 834-3025

**SCHEDULE "A"**

**LEGAL SURVEY  
PROPERTY TO BE ACQUIRED BY  
GARRISON TRUST LIMITED  
ANDREWSROAD, C.B.S., NL  
May 6, 2013 Job No. 9717-1**

ALL THAT piece or parcel of land, situate and being on the southern side of Conception Bay Highway, in the Town of Conception Bay South, in the Province of Newfoundland and Labrador, Canada, and being bounded and abutted as follows:

THAT IS TO SAY, beginning at a point on the southern side of Conception Bay Highway, said point having coordinates N 5 260 560.725 metres and E 301 452.188 metres of the Three Degree Modified Transverse Mercator Projection NAD - 83 for the Province of Newfoundland and Labrador,

THENCE by property now or formerly of Charles Dawe S 18°36'04" E for a distance of 73.163 metres,

THENCE by property now or formerly Stanley Dawe S 18°28'56" E for a distance of 56.133 metres,

THENCE N 76°24'06" E for a distance of 54.200 metres,

THENCE along the western side of Andrews Road S 28°56'21" E for a distance of 13.424 metres,

THENCE S 22°25'00" E for a distance of 46.712 metres,

THE NEWFOUNDLAND AND LABRADOR GAZETTE  
July 19, 2013

---

THENCE by property of Curt Joseph and Shirley Monk S 63°16'20" W for a distance of 29.412 metres,

THENCE by property of Curt Joseph and Shirley Monk, by property of Christopher M. Davis and Julia Feehan, by property of Clarence B. & M. Angela Casey, by property of Bill Feehan and Elizabeth Feehan, and by property of Jonathan G. Vaters S 13°36' 11" E for a distance of 109.523 metres,

THENCE by property of Jonathan G. Vaters N 63°16'20" E for a distance of 51.742 metres,

THENCE along the western side of Andrews Road S 26°37'00" E for a distance of 20.323 metres,

THENCE by property of Malcom Rideout S 63°16'20" W for a distance of 59.541 metres,

THENCE by property of Malcom Rideout, by property of Craig Rideout and Tina Rideout and by property of Winston Rideout S 27°04'36" E for a distance of 90.077 metres,

THENCE by property of Winston Rideout, by property of Stephen Noel Rideout and Judy Maria Rideout and by property of Jeremy Stephen Rideout S 25°40'14" E for a distance of 75.410 metres,

THENCE by property of Christopher and Roanne Clarke, by property of James Macmillan and Gloria Porter, and by property of Dereck Andrews S 25°00'26" E for a distance of 81.658 metres,

THENCE by property of Dereck Andrews, by property of David L. Tibbo, Brenda Tibbo and Jerdon Reid, by property of Fred Porter and Ella Porter, by property of Frederick W. Porter and Ella L. Porter, by property of Timothy Seymore Woodford, and by property of Fred Andrews S 24°49'47" E for a distance of 162.113 metres,

THENCE along the northern side of Conception Bay South Bypass Road S 53°17'42" W for a distance of 397.437,

THENCE along the eastern side of St. Peters Road N 10°24'37" W for a distance of 12.603 metres,

THENCE N 03°52'00" W for a distance of 117.730 metres,

THENCE N 05°29'00" W for a distance of 327.711 metres,

THENCE by land claimed by Hickeys Building Supplies Ltd. N 62°34'02" E for a distance of 71.023 metres,

THENCE N 02°23'58" W for a distance of 216.975 metres,

THENCE by property of Hickeys Building Supplies Limited N 09°19'06" E for a distance of 16.765 metres,

THENCE N 12°59'03" E for a distance of 16.093 metres,

THENCE N 04°23'12" E for a distance of 7.197 metres,

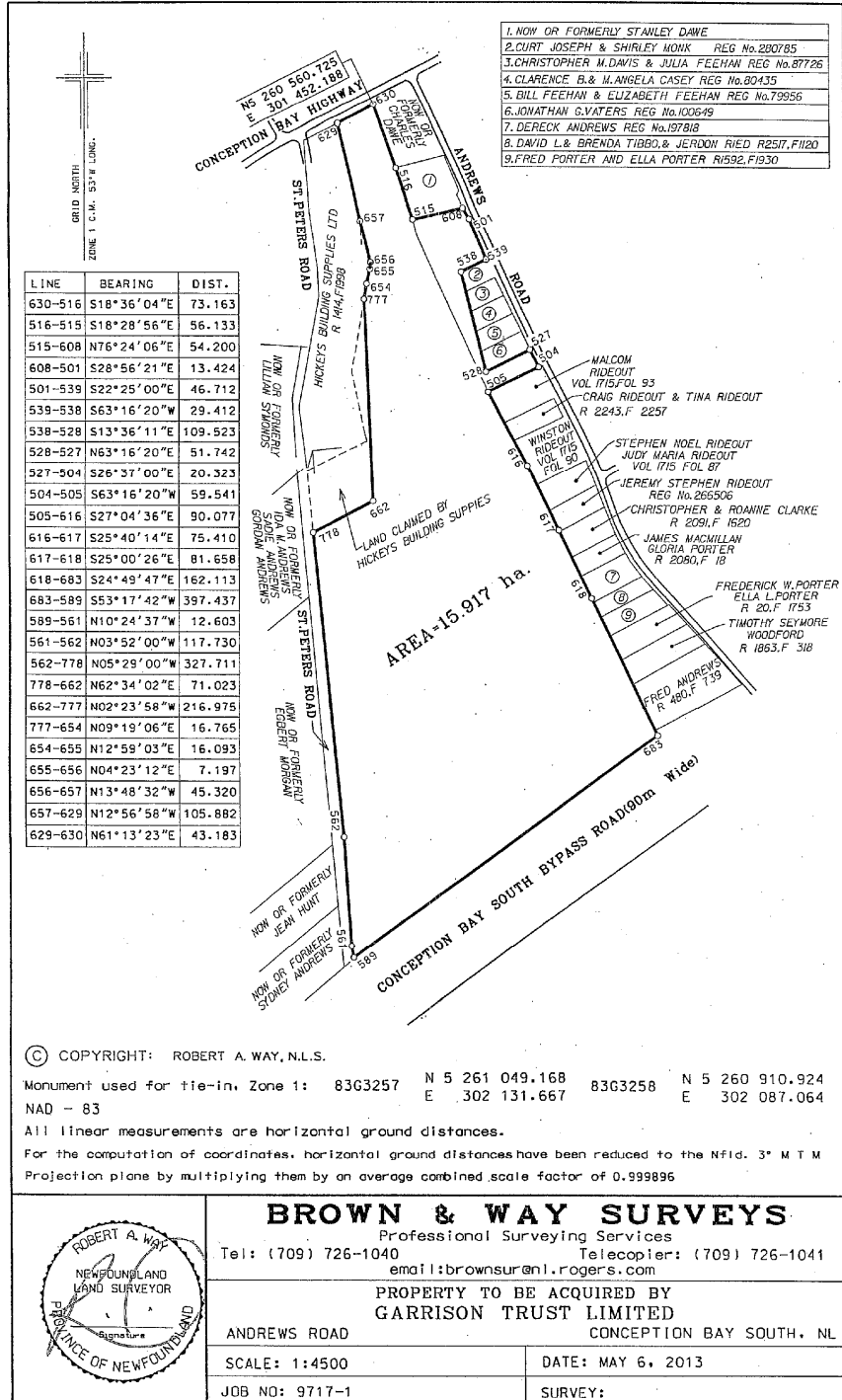
THENCE N 13°48'32" W for a distance of 45.320 metres,

THENCE N 12°56'58" W for a distance of 105.882 metres,

THENCE along the southern side of Conception Bay Highway N 61°13'23" E for a distance of 43.183 metres, more or less, to the point of beginning and containing an area of 15.917 hectares, more or less. Which land is more particularly shown on the plan hereto attached.

All bearings being referred to the above mentioned projection. All linear measurements are horizontal ground distances. This description and accompanying plan, Job # 9717-1 of Brown & Way Surveys, form an integral part of the returns and are not separable.

SCHEDULE "B"





# THE NEWFOUNDLAND AND LABRADOR GAZETTE

## PART II

### SUBORDINATE LEGISLATION FILED UNDER THE STATUTES AND SUBORDINATE LEGISLATION ACT

Vol. 88

ST. JOHN'S, FRIDAY, JULY 19, 2013

No. 29

## Index

### PART I

City of St. John's Act – Notice .....	368
Corporations Act – Notice .....	361
Highway Traffic Act – Notice .....	368
Lands Act – Notice .....	371
Quieting of Titles Act – Notice .....	372
Urban and Rural Planning Act, 2000 – Notice .....	368

### PART II

#### CONTINUING INDEX OF SUBORDINATE LEGISLATION

Title of Act and Subordinate Legislation made thereunder	CNLR or NL Reg.	Amendment	NL Gazette Date & Page No.
--	--------------------	-----------	-------------------------------

**No Subordinate Legislation  
Received at Time of Printing**

*The Newfoundland and Labrador Gazette* is published from the office of the Queen's Printer.

Copy for publication must be received by **Friday, 4:30 p.m.**, seven days before publication date to ensure inclusion in next issue.

Advertisements must be submitted in either PDF format or as a MSWord file. When this is not possible, advertisements must be either typewritten or printed legibly, separate from covering letter. Number of insertions required must be stated and the names of all signing officers typewritten or printed.

Copy may be mailed to the address below, faxed to (709) 729-1900 or emailed to [queensprinter@gov.nl.ca](mailto:queensprinter@gov.nl.ca).

Advertising rates are available upon request. Subscription rate for *The Newfoundland and Labrador Gazette* is \$125.00 for 52 weeks plus applicable tax (\$131.25). Weekly issues of \$3.00 per copy, plus tax payable in advance.

All cheques, money orders, etc., should be made payable to THE NEWFOUNDLAND EXCHEQUER ACCOUNT and all correspondence should be addressed to: Office of the Queen's Printer, P. O. Box 8700, Ground Floor, East Block, Confederation Building, St. John's, NL A1B 4J6. Telephone (709) 729-3649. Fax: (709) 729-1900.

**Web Site:** <http://www.gs.gov.nl.ca/printer/index.html>

**Place your order by contacting:  
Office of The Queen's Printer  
Confederation Building, East Block  
St. John's, NL A1B 4J6  
Telephone: (709) 729-3649 Fax: (709) 729-1900  
email: [queensprinter@gov.nl.ca](mailto:queensprinter@gov.nl.ca)**

**Government Information Product  
Publication Rate Mail**

**G.S.T. # R107442683**

**All requests for Subscription and Legislation MUST be prepaid.**