



THE NEWFOUNDLAND AND LABRADOR GAZETTE

PART I

PUBLISHED BY AUTHORITY

Vol. 89

ST. JOHN'S, FRIDAY, JUNE 13, 2014

No. 24

CORPORATIONS ACT

NOTICE TO CREDITORS

Please be advised that the corporation J. HACKETT FISHERIES LTD., doing business at Humber Arm South, Newfoundland and Labrador, will be dissolved by the Estate of John Azariah Hackett as of June 30, 2014. All claims against the assets of the corporation must be made in writing and include the claim amount, basis and origination date. The deadline for submitting claims is June 23, 2014. Any claims that are not received by the corporation prior to the date set forth above will not be recognized. All claims must be sent to Adam G. Baker, Poole Althouse Barristers and Solicitors, 49-51 Park Street, Corner Brook, NL A2H 2X1

J. HACKETT FISHERIES
Lynn Kendall

June 13

MINERAL ACT

NOTICE

Published in accordance with section 62 of CNLR 1143/96 under the *Mineral Act*, cM-12, RSNL 1990 as amended.

Mineral rights to the following mineral licenses have reverted to the Crown:

A portion of license 015984M
Held by Paragon Minerals Corporation
Situate near Glenwood, Central NL
On map sheet 02D/15, 02E/02
more particularly described in an application on file at Department of Natural Resources.

A portion of license 015701M
Held by Paragon Minerals Corporation
Situate near Third Pond, Central NL
On map sheet 02D/15, 02E/02
more particularly described in an application on file at Department of Natural Resources.

THE NEWFOUNDLAND AND LABRADOR GAZETTE
June 13, 2014

A portion of license Held by Situates near On map sheet more particularly described in an application on file at Department of Natural Resources.	015698M Paragon Minerals Corporation Third Pond, Central NL 02D/15, 02E/02	Mineral License Held by Situates near On map sheet	019917M Rose, Shawn Southwest Brook, West - Central NL 12B/08
Mineral License Held by Situates near On map sheet	011808M 7980736 Canada Inc. Red Indian Lake, Central NL 12A/15	Mineral License Held by Situates near On map sheet	019924M Rhino Exploration Ltd. Gull Pond Area, Central NL 12H/09
Mineral License Held by Situates near On map sheet	019192M Canstar Resources Inc. Buchans Junction, Central NL 12A/16, 12A/15	Mineral License Held by Situates near On map sheet	019925M Burt, Kenneth Southwest Brook, West - Central NL 12B/08
Mineral License Held by Situates near On map sheet	020849M Pike, Lloyd Hatchet Cove, Eastern NL 02C/04	Mineral License Held by Situates near On map sheet	019933M Turpin, Alexander J. Northwest of Lawn, Burin Peninsula 01L/13
Mineral License Held by Situates near On map sheet	017355M Wolverine Exploration Inc. Hamilton River 13E/01	Mineral License Held by Situates near On map sheet	019934M Turpin, Alexander J. Northwest of Lawn, Burin Peninsula 01L/13
Mineral License Held by Situates near On map sheet	018598M Cap-Ex Iron Ore Ltd. Wishart Lake 23J/10, 23J/15	Mineral License Held by Situates near On map sheet	020853M White, Derek R. Fischells Brook, Western NL 12B/01
Mineral License Held by Situates near On map sheet	018601M Spruce Ridge Resources Ltd Hampden Area, White Bay 12H/10	Mineral License Held by Situates near On map sheet	020854M White, Derek R. Fischells Brook, Western NL 12B/01
Mineral License Held by Situates near On map sheet	018604M Cap-Ex Iron Ore Ltd. Gilling Lake 23J/10	Mineral License Held by Situates near On map sheet	020855M Byrne, Debbie Lords Cove Area, Burin Peninsula 01L/13
Mineral License Held by Situates near On map sheet	018609M Cap-Ex Iron Ore Ltd. Gilling Lake 23J/10	Mineral License Held by Situates near On map sheet	020856M Molloy, Philip Lords Cove Area, Burin Peninsula 01L/13
Mineral License Held by Situates near On map sheet	018618M Avidian Gold Inc. Big Pond, Southern NL 11O/16	Mineral License Held by Situates near On map sheet	020857M Morgan, Allan Northwest of Lawn, Burin Peninsula 01L/13
Mineral License Held by Situates near On map sheet	018622M Avidian Gold Inc. Big Pond, Southern NL 11O/16	Mineral License Held by Situates near On map sheet	020858M Turpin, Lindsay Wet Tilt Hill, Burin Peninsula 01M/03
Mineral License Held by Situates near On map sheet	020030M Zonte Metals Inc. Bellmans Pond, Central NL 02E/02	Mineral License Held by Situates near On map sheet	020859M Morgan, Allan Gull Pond, Burin Peninsula 01M/04
A portion of license Held by Situates near On map sheet more particularly described in an application on file at Department of Natural Resources	021477M Puddle Pond Resources Inc. L'Anse au Loup Brook, Burin Peninsula 01M/04, 01L/13	Mineral License Held by Situates near On map sheet	020860M Cooper, Gordon E. Black Duck Cove, Eastern NL 02C/04
		Mineral License Held by Situates near On map sheet	020861M Byrne, Patrick Northwest of Lawn, Burin Peninsula 01L/13

THE NEWFOUNDLAND AND LABRADOR GAZETTE
June 13, 2014

Mineral License Held by Situates near On map sheet	020865M Courtney, Stephen Noel Pauls Brook, Central NL 12A/09	Mineral License Held by Situates near On map sheet	020889M Stares, Shane Island Pond Area, Central NL 02D/07
Mineral License Held by Situates near On map sheet	020866M ACM Minerals Ltd. Bell Island, Avalon Peninsula 01N/11	Mineral License Held by Situates near On map sheet	020890M Stares, Shane Island Pond Area, Central NL 02D/07
Mineral License Held by Situates near On map sheet	020867M Ubique Minerals Ltd. Luce Lake 23B/15, 23G/02	Mineral License Held by Situates near On map sheet	020891M Stares, Shane Island Pond Area, Central NL 02D/07
Mineral License Held by Situates near On map sheet	020868M Ubique Minerals Ltd. Dumbell Lake 23B/15	Mineral License Held by Situates near On map sheet	020892M Rose, Shawn Southwest Brook, West - Central NL 12B/08
Mineral License Held by Situates near On map sheet	020869M ACM Minerals Ltd. Bell Island Area, Avalon Peninsula 01N/10	Mineral License Held by Situates near On map sheet	020893M Lewis, Donna Roberts Arm, Central NL 02E/05
Mineral License Held by Situates near On map sheet	020871M Pretty, Adam Noel Pauls Brook, Central NL 12A/09	Mineral License Held by Situates near On map sheet	020894M Burt, Kenneth Southwest Brook, West - Central NL 12B/08
Mineral License Held by Situates near On map sheet	020872M Turpin, Benjamin Boat Harbour, Burin Peninsula 01M/07	Mineral License Held by Situates near On map sheet	020900M Hopkins, Clarence Hare Bay, Great Northern Peninsula 02M/05
Mineral License Held by Situates near On map sheet	020875M Turpin, Alexander J. Boat Harbour Area, Burin Peninsula 01M/07	Mineral License Held by Situates near On map sheet	020901M Hopkins, Clarence Hare Bay, Great Northern Peninsula 02M/05
Mineral License Held by Situates near On map sheet	020876M Lannon, George Island Pond Area, Central NL 02D/13	Mineral License Held by Situates near On map sheet	020902M Hopkins, Clarence Penneys Pond, Great Northern Peninsula 12I/16
Mineral License Held by Situates near On map sheet	020877M Hopkins, Clarence Penneys Pond, Great Northern Peninsula 12I/16	Mineral License Held by Situates near On map sheet	020903M Hopkins, Clarence Penneys Pond, Great Northern Peninsula 12I/16
Mineral License Held by Situates near On map sheet	020879M Hopkins, Clarence Hare Bay, Great Northern Peninsula 02M/05	Mineral License Held by Situates near On map sheet	020904M Hopkins, Clarence Hare Bay, Great Northern Peninsula 12P/08
Mineral License Held by Situates near On map sheet	020880M Hopkins, Clarence Hare Bay, Great Northern Peninsula 02M/05	Mineral License Held by Situates near On map sheet	020906M Burton, Jason Harpoon Brook, Central NL 12A/10
Mineral License Held by Situates near On map sheet	020887M Keats, Allan E. T. Noel Pauls Brook, Central NL 12A/16	A portion of license Held by Situates near On map sheet more particularly described in an application on file at Department of Natural Resources.	021252M Jones, Brian Red Indian Lake, Central NL 12A/11
Mineral License Held by Situates near On map sheet	020888M Stares, Shane Island Pond Area, Central NL 02D/07	The lands covered by this notice except for the lands within Exempt Mineral Lands, the Exempt Mineral Lands being described in CNLR 1143/96 and NLR 71/98, 104/98,	

97/00, 36/01, 31/04, 78/06, 8/08, 28/09 and 5/13 and outlined on 1:50 000 scale digital maps maintained by the Department of Natural Resources, will be open for staking after the hour of 9:00 a.m. on the 32nd clear day after the date of this publication.

DEPARTMENT OF NATURAL RESOURCES
JUSTIN LAKE
Manager - Mineral Rights

File #'s 774: 4480, 4648, 6818;

775: 0211, 0899, 0902, 1936, 1939, 1942, 1947,
1956, 1960, 1963, 2441, 2999, 3006, 3007,
3015, 3016, 3674, 3675, 3676, 3677, 3678,
3679, 3680, 3681, 3682, 3686, 3688, 3689,
3690, 3691, 3693, 3694, 3697, 3698, 3699,
3700, 3701, 3706, 3707, 3708, 3709, 3710,
3711, 3712, 3713, 3716, 3717, 3718, 3719,
3720, 3722, 3874

June 13

URBAN AND RURAL PLANNING ACT, 2000

**NOTICE OF REGISTRATION
MOUNT PEARL DEVELOPMENT REGULATIONS
2010 AMENDMENT NO. 32, 2014
(BAR, CLUB AND LODGE AMENDMENT)**

TAKE NOTICE that the MOUNT PEARL Development Regulations 2010 Amendment No. 32, 2014, adopted by Council on the 23rd day of April, 2014, has been registered by the Department of Municipal and Intergovernmental Affairs.

In general terms, the purpose of this amendment is to remove "Club and Lodge" uses from the list of permitted uses in several use zones, to add "Club and Lodge" uses to the list of discretionary uses in several use zones, and to remove "Bar" use from the list of permitted uses and add "Bar" use to the list of discretionary uses in the Commercial – Regional (CR) zone.

The MOUNT PEARL Development Regulations 2010 Amendment No. 32, 2014 comes into effect on the day that this notice is published in *The Newfoundland and Labrador Gazette*. Anyone who wishes to inspect a copy of this amendment may do so at the Mount Pearl City Hall, 3 Centennial Street, during normal working hours.

CITY OF MOUNT PEARL
Per: Michele Peach, Chief Administrative Officer

June 13

**NOTICE OF REGISTRATION
MOUNT PEARL DEVELOPMENT REGULATIONS
2010 AMENDMENT NO. 36, 2014
(WHEELCHAIR RAMP AMENDMENT)**

TAKE NOTICE that the MOUNT PEARL Development Regulations 2010 Amendment No. 36, 2014, adopted by Council on the 23rd day of May, 2014, has been registered by the Department of Municipal and Intergovernmental Affairs.

In general terms, the purpose of this amendment is to add a definition for "Residential Wheelchair Ramp" and add Section 6.37, which outlines the regulations that apply to residential wheelchair ramps.

The Mount Pearl Development Regulations 2010 Amendment No. 36, 2014 comes into effect on the day that this notice is published in *The Newfoundland and Labrador Gazette*. Anyone who wishes to inspect a copy of this amendment may do so at the Mount Pearl City Hall, 3 Centennial Street, during normal working hours.

CITY OF MOUNT PEARL
Per: Michele Peach, Chief Administrative Officer

June 13

**NOTICE OF REGISTRATION
TOWN OF CONCEPTION BAY SOUTH
MUNICIPAL PLAN AMENDMENT NO. 2, 2013
DEVELOPMENT REGULATIONS
AMENDMENT NO. 3, 2013**

TAKE NOTICE that the TOWN OF CONCEPTION BAY SOUTH Municipal Plan Amendment No. 2, 2013 and Development Regulations Amendment No. 3, 2013 adopted by the Town Council of CONCEPTION BAY SOUTH on March 4, 2014 and approved on April 15, 2014 has now been registered by the Minister of Municipal and Intergovernmental Affairs.

In general terms, the purpose of Municipal Plan Amendment No. 2, 2013 is to redesignate property along the east side of the Conception Bay Highway, Seal Cove to accommodate a proposed industrial storage site.

In general terms, the purpose of Development Regulations Amendment No. 3, 2013 is to rezone land of Butlers Pit Road, behind existing residential and industrial properties located on the south side of the Conception Bay Highway from Comprehensive Development Area (CDA) to Industrial General (IG) to accommodate an industrial storage yard.

The CONCEPTION BAY SOUTH Municipal Plan Amendment No. 2, 2013 and Development Regulations Amendments No. 3, 2013 will come into effect on Friday June 13, 2014, the date of publication of this notice in *The Newfoundland and Labrador Gazette*. Anyone who wishes to inspect a copy of these amendments may do so at the Town Office, during normal working hours.

TOWN OF CONCEPTION BAY SOUTH
Elaine Mitchell, MCIP
Director of Planning and Development

June 13

**NOTICE OF REGISTRATION
TOWN OF CONCEPTION BAY SOUTH
CONCEPTION BAY SOUTH DEVELOPMENT
REGULATIONS AMENDMENT NO. 7, 2014**

TAKE NOTICE that the TOWN OF CONCEPTION BAY SOUTH Development Regulations Amendment No. 7, 2014 adopted by the Town Council of CONCEPTION BAY SOUTH on May 6, 2014 has now been registered by the Minister of Municipal and Intergovernmental Affairs.

In general terms, the purpose of this Development Regulations Amendment No. 7, 2014 is to revise the regulations to accommodate secure outside storage associated with industrial buildings in the Commercial/Light Industrial (CLI) zone and to accommodate equipment such as overhead cranes and specialized buildings which may exceed the maximum height requirements specified in the Commercial/Light Industrial (CLI) zone.

This amendment came into effect on Friday June 13, 2014, the day that this notice is published in *The Newfoundland and Labrador Gazette*. Anyone who wishes to inspect a copy, may do so at the Planning Department located in the Villa Nova Plaza (2nd floor), 120 Conception Bay Highway, Manuels, during normal working hours.

TOWN OF CONCEPTION BAY SOUTH
Elaine Mitchell, MCIP
Director of Planning and Development

June 13

**NOTICE OF REGISTRATION
TOWN OF DEER LAKE
DEVELOPMENT REGULATIONS
AMENDMENT NO. 10, 2014**

TAKE NOTICE that the TOWN OF DEER LAKE Development Regulations Amendment No. 10, 2014 as adopted on the 24th day of March, 2014 has been registered by the Minister of Municipal and Intergovernmental Affairs.

The purpose of these amendments to certain standards under the Residential Zone is to clearly state:

- a) That the minimum frontage per single dwelling is 15 metres;
- b) That the minimum floor area per dwelling unit in a double dwelling is 80 square metres;
- c) That the minimum floor area per row dwelling in a row dwelling development is 65 square metres.

The Development Regulations Amendment No. 10, 2014 comes into effect on the day that this notice is published in *The Newfoundland and Labrador Gazette*.

Anyone who wishes to inspect a copy of the DEER LAKE Development Regulations Amendment No. 10, 2014 may do so at the Deer Lake Town Office during normal working hours.

TOWN OF DEER LAKE
Damon Clarke, Development Office/Town Planner

June 13

**NOTICE OF REGISTRATION
TOWN OF LOGY BAY-
MIDDLE COVE- OUTER COVE
MUNICIPAL PLAN AMENDMENT No. 15, 2013,
DEVELOPMENT REGULATIONS
AMENDMENT No. 21, 2013, and
ST. JOHN'S URBAN REGION
REGIONAL PLAN
AMENDMENT No. 15, 2013**

TAKE NOTICE that the TOWN OF LOGY BAY-MIDDLE COVE-OUTER COVE Municipal Plan Amendment No. 15, 2013, and Development Regulations Amendment No. 21, 2013, as adopted by Council on the 4th day of November, 2013, has been registered by the Minister of Municipal and Intergovernmental Affairs.

In general terms, Municipal Plan Amendment No. 15, 2013, will re-designate an area of land located west off Marine Drive from Rural to Residential. Development Regulations Amendment No. 21, 2013, will re-zone the same area of land from Rural to Residential Low Density.

The St. John's Urban Region Plan Amendment No. 15, 2013, will re-designate land as described in Municipal Plan Amendment No. 15, 2013 and Development Regulations Amendment No. 21, 2013, from Rural to Urban Development.

The TOWN OF LOGY BAY-MIDDLE COVE-OUTER COVE Municipal Plan Amendment No. 15, 2013, Development Regulations Amendment No. 21, 2013, and St. John's Urban Region Plan Amendment No. 15, 2013, comes into effect on the day that this notice is published in *The Newfoundland and Labrador Gazette*. Anyone who wishes to inspect a copy of the TOWN OF LOGY BAY-MIDDLE COVE-OUTER COVE Municipal Plan Amendment No. 15, 2013, Development Regulations Amendment No. 21, 2013, and St. John's Urban Region Plan Amendment No. 15, 2013, may do so at the Town

Office, Logy Bay-Middle Cove-Outer Cove during normal working hours.

TOWN OF LOGY BAY-MIDDLE COVE- OUTER COVE
Richard Roche, Town Clerk

June 13

LANDS ACT

NOTICE OF INTENT

Lands Act, c36, SNL 1991, as amended

NOTICE IS HEREBY given that BRADLEY G. DRISCOLL of St. John's, in the province of Newfoundland and Labrador intends to apply to the Department of Environment and Conservation, two months from the publication of this notice, to acquire title, pursuant to Section 7(2)(e) of the said Act, to that piece of Crown land situated within fifteen (15) metres of the waters of Bull Pond, Brigus Junction in the Electoral District of Placentia-St. Mary's for the purpose of a wharf and boathouse and being more particularly described as follows:

*Bounded on the North by Reservation land
for a distance of 10 metres;
Bounded on the East by
property of BRADLEY G. DRISCOLL
for a distance of 43.7 metres;
Bounded on the South by Reservation land
for a distance of 10 metres;
Bounded on the West by shoreline of Bull Pond
for a distance of 43.7 metres;
and containing an area of
approximately 437 square metres.*

Any person wishing to object to the application must file the objection, in writing, within one month from the publication of this Notice, with reasons for it, to the Minister of Environment and Conservation, and mail to the nearest Regional Lands Office:

c/o Eastern Regional Lands Office, P.O. Box 8700, Howley Building, Higgins Line, St. John's, NL, A1B 4J6.

c/o Central Regional Lands Office, P.O. Box 2222, Gander, NL, A1V 1L7.

c/o Western Regional Lands Office, P.O. Box 2006, Sir Richard Squires Building, Corner Brook, NL, A2H 6J8.

c/o Labrador Regional Lands Office, P.O. Box 3014, Station "B", Happy Valley-Goose Bay, NL, A0P 1E0.

For further information on the proposed application, please contact: BRADLEY G. DRISCOLL, Telephone Number (709) 690-3735.

(DISCLAIMER: *The Newfoundland and Labrador Gazette* publishes a NOTICE OF INTENT as received from the Applicant and takes no responsibility for errors or omissions in the property being more particularly described.)

June 13

NOTICE OF INTENT

Lands Act, c36, SNL 1991, as amended

NOTICE IS HEREBY given that CHRIS PACKWOOD of Goose Bay, in the province of Newfoundland and Labrador intends to apply to the Department of Environment and Conservation, two months from the publication of this notice, to acquire title, pursuant to Section 7(2)(a) of the said Act, to that piece of Crown land situated within fifteen (15) metres of the waters of Arrowhead Lake in the Electoral District of Lake Melville for the purpose of a wharf and being more particularly described as follows:

*Bounded on the North by
waters of Arrowhead Lake
for a distance of 45 metres;
Bounded on the East by Crown land
for a distance of 45 metres;
Bounded on the South by License # 106998
for a distance of 45 metres;
Bounded on the West by Crown land
for a distance of 45 metres;
and containing an area of
approximately 2025 square metres.*

Any person wishing to object to the application must file the objection, in writing, within one month from the publication of this Notice, with reasons for it, to the Minister of Environment and Conservation, and mail to the nearest Regional Lands Office:

c/o Eastern Regional Lands Office, P.O. Box 8700, Howley Building, Higgins Line, St. John's, NL, A1B 4J6.

c/o Central Regional Lands Office, P.O. Box 2222, Gander, NL, A1V 1L7.

c/o Western Regional Lands Office, P.O. Box 2006, Sir Richard Squires Building, Corner Brook, NL, A2H 6J8.

c/o Labrador Regional Lands Office, P.O. Box 3014, Station "B", Happy Valley-Goose Bay, NL, A0P 1E0.

For further information on the proposed application, please contact: CHRIS PACKWOOD, Telephone Number (709) 896-0729 or 897-5790.

(DISCLAIMER: *The Newfoundland and Labrador Gazette* publishes a NOTICE OF INTENT as received from the Applicant and takes no responsibility for errors or omissions in the property being more particularly described.)

June 13

QUIETING OF TITLES ACT

2014 01G 2127

IN THE SUPREME COURT OF NEWFOUNDLAND AND LABRADOR TRIAL DIVISION (GENERAL)

IN THE MATTER OF that piece or parcel of land situate at Civic No. 92-106 Ballfield Road, in the Town of Harbour

Main, in the Province of Newfoundland and Labrador, and an Application by ANTHONY CAPITAL CORPORATION pursuant to the *Quieting of Titles Act*, RSNL1990 cQ-3, as amended;

NOTICE OF APPLICATION UNDER THE *QUIETING OF TITLES ACT*, RSNL1990 cQ-3 as amended.

NOTICE IS HEREBY GIVEN to all parties that ANTHONY CAPITAL CORPORATION, a body corporate duly incorporated under the laws of the Province of Newfoundland and Labrador, has applied to the Supreme Court of Newfoundland and Labrador, Trial Division (General), to have its title to all that piece or parcel of land situate at Civic No. 92-106 Ballfield Road, in the Town of Harbour Main, in the Province of Newfoundland and Labrador, and more particularly described and outlined in Schedule "A" as attached hereto in this matter in the Registry of the Supreme Court of Newfoundland and Labrador, Trial Division (General), at St. John's, investigated and for a declaration that the said Applicant is the absolute owner thereof.

All persons having title adverse to the said title claimed by the Applicant shall file in the Registry of the Supreme Court of Newfoundland and Labrador, Trial Division (General), particulars of such adverse claim and serve same, together with an Affidavit verifying the same, on the undersigned solicitors for the Applicant on or before the 9th day of July, 2014, after which date no party having any claim shall be permitted to file the same or to be heard except by special leave of the Court and subject to such conditions as the Court may deem just. All adverse claims shall be investigated in such manner as the Supreme Court may direct.

DATED AT St. John's, in the Province of Newfoundland and Labrador, this 4th day of June, 2014.

MCINNES COOPER
Solicitors for the Applicant
PER Kristen A. Penney

ADDRESS FOR SERVICE:
5th Floor, Baine Johnston Centre
10 Fort William Place
P.O. Box 5939
St. John's, NL A1C 5X4

Tel: (709) 570-7317
Fax: (709) 722-1763

SCHEDULE "A"

All that piece or parcel of land situate, lying and being on the north side and on the east side of Gaskier's Road near Ballfield Road, at Harbour Main, Conception Bay, in the province of Newfoundland and Labrador, Canada and being more particularly described as follows, that is to say:

Beginning at a point, said point being a found iron pin set in the northern limit of the said Gaskier's Road and having co-ordinates of North 5 256,839.990 metres and East 292,430.273 metres of the modified three degree transverse Mercator projection (Zone 1, NAD 83) for the province of Newfoundland and Labrador, Canada

THENCE running along the aforementioned northern limit of Gaskier's Road N86°46'19"W a distance of 3.675 metres;

THENCE running N53°31'57"W a distance of 41.703 metres;

THENCE running along the northwestern limit of Gaskier's Road S53°44' 51"W a distance of 13.822 metres;

THENCE running S39°37'21"W a distance of 90.330;

THENCE running N75°26'26"W a distance of 10.447 metres;

THENCE running along the eastern limit of Gaskier's Road N13°03'48" W a distance of 59.570 metres;

THENCE running N10°50'49"W a distance of 49.092 metres;

THENCE running N00°45'14"W a distance of 15.679 metres;

THENCE running N12°21'09"E a distance of 28.899 metres;

THENCE running N08°50'08"W a distance of 23.064 metres;

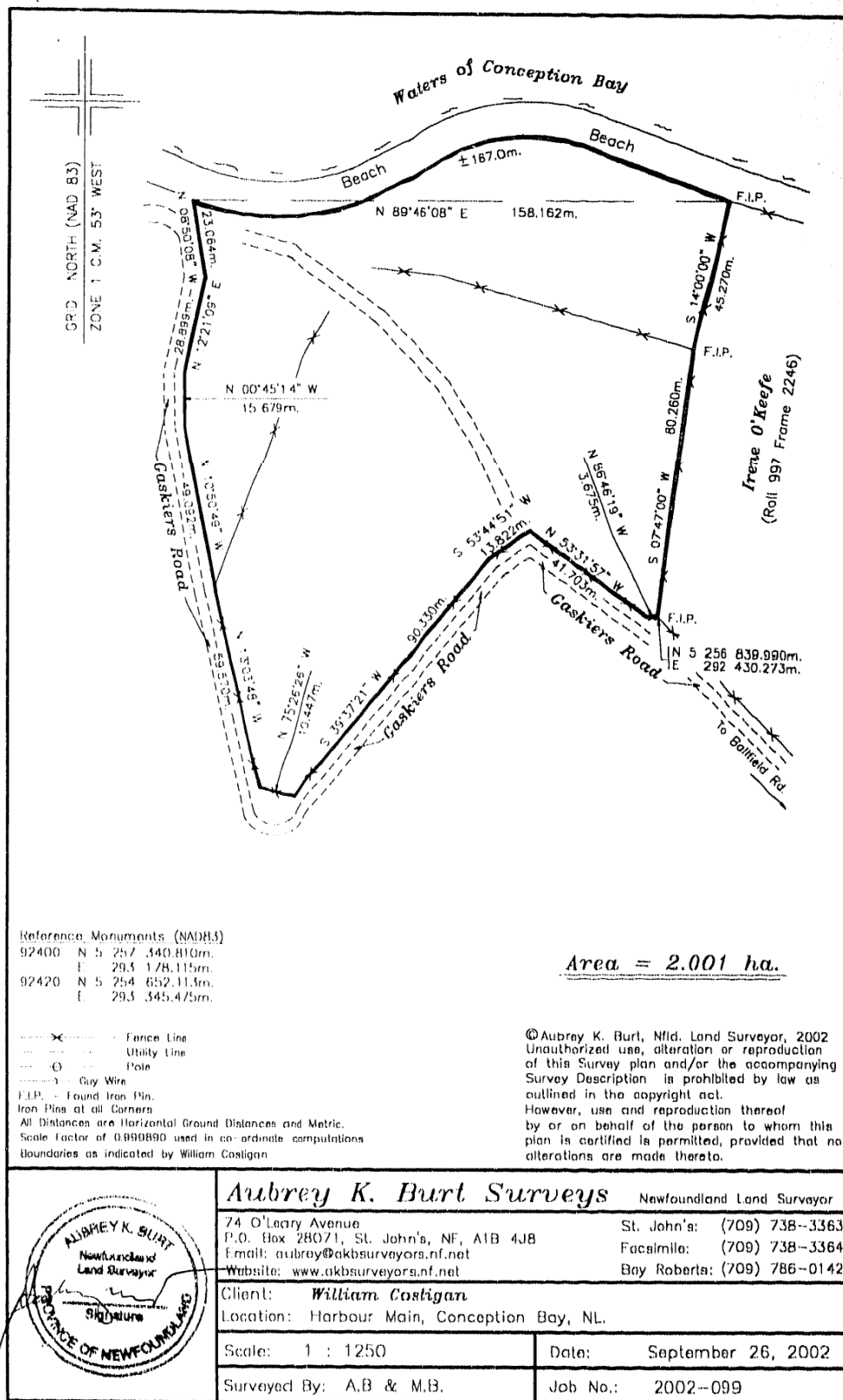
THENCE running and following the shoreline of the Waters of Conception Bay a distance of 167.0 metres, more or less, straight line bearing and distance being N89°46'08"E and 158,162 metres;

THENCE running by land of Irene O'Keefe (Roll 997 Frame 2246, Registry of Deeds for Newfoundland and Labrador) S14°00'00"W a distance of 45.270 metres;

THENCE running S07°47'00"W a distance of 80.260 metres, more or less, to the principal Point of Beginning.

The above described piece or parcel of land contains an area of 2.001 hectares, the same being more particularly described on the drawing hereto attached.

All bearings refer to Grid North (NAD83).





THE NEWFOUNDLAND AND LABRADOR GAZETTE

PART II

SUBORDINATE LEGISLATION FILED UNDER THE STATUTES AND SUBORDINATE LEGISLATION ACT

Vol. 89

ST. JOHN'S, FRIDAY, JUNE 13, 2014

No. 24

Index

PART I

Corporations Act – Notice	215
Lands Act – Notice	220
Mineral Act – Notice	215
Quieting of Titles Act – Notice	220
Urban and Rural Planning Act, 2000 – Notices	218

PART II

CONTINUING INDEX OF SUBORDINATE LEGISLATION

Title of Act and Subordinate Legislation made thereunder	CNLR or NL Reg.	Amendment	NL Gazette Date & Page No.
--	--------------------	-----------	-------------------------------

**No Subordinate Legislation
Received at Time of Printing**

The Newfoundland and Labrador Gazette is published from the Office of the Queen's Printer.

Copy for publication must be received by **Friday, 4:30 p.m.**, seven days before publication date to ensure inclusion in next issue.

Advertisements must be submitted in either PDF format or as a MSWord file. When this is not possible, advertisements must be either typewritten or printed legibly, separate from covering letter. Number of insertions required must be stated and the names of all signing officers typewritten or printed.

Copy may be mailed to the address below, faxed to (709) 729-1900 or emailed to queensprinter@gov.nl.ca.

Advertising rates are available upon request. Subscription rate for *The Newfoundland and Labrador Gazette* is \$125.00 for 52 weeks plus applicable tax (\$131.25). Weekly issues of \$3.00 per copy, plus tax payable in advance.

All cheques, money orders, etc., should be made payable to THE NEWFOUNDLAND EXCHEQUER ACCOUNT and all correspondence should be addressed to: Office of the Queen's Printer, P. O. Box 8700, Ground Floor, East Block, Confederation Building, St. John's, NL A1B 4J6. Telephone (709) 729-3649. Fax: (709) 729-1900.

Web Site: <http://www.servicenl.gov.nl.ca/printer/index.html>

**Place your order by contacting:
Office of the Queen's Printer
Confederation Building, East Block
St. John's, NL A1B 4J6
Telephone: (709) 729-3649 Fax: (709) 729-1900
email: queensprinter@gov.nl.ca**

**Government Information Product
Publication Rate Mail**

G.S.T. # R107442683

All requests for Subscription and Legislation MUST be prepaid.