



THE NEWFOUNDLAND AND LABRADOR GAZETTE

PART I

PUBLISHED BY AUTHORITY

Vol. 89	ST. JOHN'S, FRIDAY, OCTOBER 17, 2014	No. 42
---------	--------------------------------------	--------

MINERAL ACT

NOTICE

Published in accordance with section 62 of CNLR 1143/96 under the *Mineral Act*, RSNL1990 cM-12, as amended.

Mineral rights to the following mineral licenses have reverted to the Crown:

Mineral License Held by Situates near On map sheet	007571M Teck Resources Limited Burnt Pond, Central NL 12A/09
---	---

Mineral License Held by Situates near On map sheet	011088M Mega Uranium Ltd. Mount Benedict 13J/10
---	--

Mineral License Held by Situates near On map sheet	013657M Manitor Minerals Inc. Springdale, Central NL 12H/09
---	--

Mineral License Held by Situates near On map sheet	015152M Alterra Resources Inc. Effingham Harbour 03D/05
---	--

Mineral License Held by Situates near On map sheet	020437M Duffitt, Alexander S. Gander Lake Area, Central NL 02D/16
---	--

Mineral License Held by Situates near On map sheet	016401M Reynolds, Damien Kanairikok River 13K/15
---	---

Mineral License Held by Situates near On map sheet	021619M Newfoundland Fluorspar Exploration Ltd. Shoal Bay, Central NL 02E/09
---	---

A portion of license Held by Situates near On map sheet	021600M Buchans Minerals Corporation Lloyds Lake, Central NL 12A/05 more particularly described in an application on file at Department of Natural Resources.
--	---

A portion of license Held by Situates near On map sheet	020698M Buchans Minerals Corporation Puddle Pond, Central NL 12A/05 more particularly described in an application on file at Department of Natural Resources.
--	---

Mineral License Held by	017783M Noel, E. Michele
----------------------------	-----------------------------

THE NEWFOUNDLAND AND LABRADOR GAZETTE
October 17, 2014

Situate near On map sheet	Southwest Gander River, Central NL 02D/11	Situate near On map sheet	Sandy Harbour River, Burin Peninsula 01M/09
Mineral License Held by Situate near On map sheet	017784M McLennon, Tom Glovers Harbour, Central NL 02E/06, 02E/05	Mineral License Held by Situate near On map sheet	021239M White, Derek R. Sheep Brook, Western NL 12B/08
Mineral License Held by Situate near On map sheet	017809M Bessey, Michael Cape Caribou River 13F/10	Mineral License Held by Situate near On map sheet	021240M Budgell, Aubrey Red Indian Lake, Central NL 12A/15
A portion of license Held by Situate near On map sheet more particularly described in an application on file at Department of Natural Resources.	017995M Burt, Clyde Bellmans Pond, Central NL 02E/02	Mineral License Held by Situate near On map sheet	021241M McLennon, Tom Fortune Harbour, Central NL 02E/11
Mineral License Held by Situate near On map sheet	019108M Ryan, Kevin St. Lawrence, Burin Peninsula 01L/14	Mineral License Held by Situate near On map sheet	021243M White, Derek R. Sheep Brook, Western NL 12B/08
A portion of license Held by Situate near On map sheet more particularly described in an application on file at Department of Natural Resources.	021578M Buchans Minerals Corporation Lloyds Lake, Central NL 12A/05	Mineral License Held by Situate near On map sheet	021245M Marathon Gold Corporation Southern Pond, Baie Verte Peninsula 12H/16
Mineral License Held by Situate near On map sheet	020315M Hicks, Darrin Hamilton River 13F/02, 13F/07	Mineral License Held by Situate near On map sheet	021246M Marathon Gold Corporation Southern Pond, Baie Verte Peninsula 12H/16
Mineral License Held by Situate near On map sheet	021319M Hicks, Darrin Goose Bay Area 13F/08	Mineral License Held by Situate near On map sheet	021247M Benoit, Thomas Cape Caribou River Area 13F/10, 13F/07
Mineral License Held by Situate near On map sheet	020328M Eagleridge International Limited Gilbert Bay 13A/09	Mineral License Held by Situate near On map sheet	021249M Ryan, Kevin Conception Bay South, Avalon Peninsula 01N/06
Mineral License Held by Situate near On map sheet	020334M Quinlan, Larry Northwest Gander River, Central NL 02D/14	Mineral License Held by Situate near On map sheet	021250M Benoit, Thomas Sheep Brook, Western NL 12B/08
Mineral License Held by Situate near On map sheet	020336M Metals Creek Resources Corp. Noel Pauls Brook, Central NL 12A/10	Mineral License Held by Situate near On map sheet	021258M Abbott, Dylan Country Pond, Avalon Peninsula 01N/07
Mineral License Held by Situate near On map sheet	020343M Metals Creek Resources Corp. Noel Pauls Brook, Central NL 12A/09	A portion of license Held by Situate near On map sheet more particularly described in an application on file at Department of Natural Resources	021326M Ubique Minerals Ltd. Buchans Area, Central NL 12A/15
Mineral License Held by Situate near On map sheet	020346M Quinlan, Andrew Sandy Harbour, Burin Peninsula 01M/09	The lands covered by this notice except for the lands within Exempt Mineral Lands, the Exempt Mineral Lands being described in CNLR 1143/96 and NLR 71/98, 104/98, 97/00, 36/01, 31/04, 78/06, 8/08, 28/09 and 5/13 and outlined on 1:50 000 scale digital maps maintained by the Department of Natural Resources, will be open for staking after the hour of 9:00 a.m. on the 32 nd clear day after the date of this publication.	
Mineral License Held by	020348M Quinlan, Andrew		

DEPARTMENT OF NATURAL RESOURCES
JUSTIN LAKE
Manager - Mineral Rights

File #'s 774: 3966, 6197, 8482, 9736;

775: 0355, 0356, 0364, 0424, 0585, 1210, 1211,
1227, 1389, 2388, 2667, 3282, 3289, 3294,
3298, 3299, 3306, 3307, 3309, 3861, 3862,
3863, 3865, 3867, 3868, 3869, 3871, 3872,
3876, 3926.

Oct 17

CITY OF ST. JOHN'S ACT



**ST. JOHN'S MUNICIPAL COUNCIL
NOTICE
ST. JOHN'S COMMERCIAL MAINTENANCE
(AMENDMENT NO. 1-2014) BY-LAW**

TAKE NOTICE that the ST. JOHN'S MUNICIPAL COUNCIL has enacted the St. John's Commercial Maintenance (Amendment No. 1 - 2014) By-Law.

The said By-Law was passed by Council on the 6th day of October, 2014, so as to include provisions to ensure goods, materials, or equipment stored at a commercial site are properly secured/contained.

All persons are hereby required to take notice that any person who wishes to view such Regulations may view same at the Office of the City Solicitor of the ST. JOHN'S MUNICIPAL COUNCIL at City Hall, and that any person who wishes to obtain a copy thereof may obtain it at the said office upon the payment of a reasonable charge as established by the ST. JOHN'S MUNICIPAL COUNCIL for such copy.

Dated this 6th day of October, 2014.

CITY OF ST. JOHN'S
Elaine Henley, City Clerk

Oct 17

URBAN AND RURAL PLANNING ACT, 2000

**NOTICE OF REGISTRATION
ST. JOHN'S MUNICIPAL PLAN
AMENDMENT NO. 130, 2014**

TAKE NOTICE that the ST. JOHN'S MUNICIPAL PLAN Amendment Number 130, 2014, adopted on the 25th day of August, 2014, and approved on the 29th day of September, 2014, have been registered by the Minister of Municipal and Intergovernmental Affairs.

In general terms, the purpose of Municipal Plan Amendment Number 130, 2014, is to allow development standards of the Residential Land Use Districts to be governed by the appropriate zone requirements of the St. John's Development Regulations.

These amendments come into effect on the date that this notice is printed in *The Newfoundland and Labrador Gazette*. Anyone who wishes to inspect a copy of the amendments may do so at the Department of Planning, 3rd Floor, St. John's City Hall during regular business hours.

CITY OF ST. JOHN'S
Ken O'Brien, MCIP –Chief Municipal Planner

Oct 17

**NOTICE OF REGISTRATION
MOUNT PEARL DEVELOPMENT
REGULATIONS 2010 AMENDMENT NO. 40, 2014
(CHANGEABLE MESSAGE SIGNS AMENDMENT)**

TAKE NOTICE that the MOUNT PEARL Development Regulations 2010 Amendment No. 40, 2014, adopted by Council on the 9th day of September, 2014, has been registered by the Department of Municipal and Intergovernmental Affairs.

In general terms, the purpose of this amendment is to regulate the brightness of changeable message signs in order to minimize, especially at night: distractions to drivers, safety hazards, nuisance to residents, and negative effects on the look, character, and quality of areas visible to the public.

The MOUNT PEARL Development Regulations 2010 Amendment No. 40, 2014 comes into effect on the day that this notice is published in *The Newfoundland and Labrador Gazette*. Anyone who wishes to inspect a copy of this amendment may do so at the Mount Pearl City Hall, 3 Centennial Street, during normal working hours.

CITY OF MOUNT PEARL
Per: Michele Peach, Chief Administrative Officer

Oct 17

**NOTICE OF REGISTRATION
MOUNT PEARL MUNICIPAL PLAN 2010
AMENDMENT NO. 12, 2014 AND
MOUNT PEARL DEVELOPMENT REGULATIONS
2010 AMENDMENT NO. 37, 2014
(POLLUX DRIVE AMENDMENT)**

TAKE NOTICE that the CITY OF MOUNT PEARL Municipal Plan 2010 Amendment No. 12, 2014, and Development Regulations 2010 Amendment No. 37, 2014, adopted by Council on the 29th day of July, 2014 and approved on the 26th day of August, 2014, have been registered by the Department of Municipal and Intergovernmental Affairs.

In general terms, the purpose of Municipal Plan 2010 Amendment No. 12, 2014 and Development Regulations 2010 Amendment No. 37, 2014, is to provide Council with the authority to consider an application for the proposed development of Phase 4 of the Moffatt Road Subdivision. The re-designation and rezoning of the subject property is for the purpose of enlarging proposed building lots to consistent sizes and to convert a remnant area zoned Open Space to a functional use (i.e., Commercial – Mixed).

Municipal Plan 2010 Amendment No. 12, 2014, and Development Regulations 2010 Amendment No. 37, 2014, come into effect on the day that this notice is published in *The Newfoundland and Labrador Gazette*. Anyone who wishes to inspect a copy of these amendments may do so at the Mount Pearl City Hall, 3 Centennial Street, during normal working hours.

CITY OF MOUNT PEARL
Per: Michele Peach, Chief Administrative Officer

Oct 17

**NOTICE OF REGISTRATION
MOUNT PEARL MUNICIPAL PLAN 2010
AMENDMENT NO. 13, 2014 AND
MOUNT PEARL
DEVELOPMENT REGULATIONS 2010
AMENDMENT NO. 38, 2014
(9 SAGONA AVENUE AMENDMENT)**

TAKE NOTICE that the CITY OF MOUNT PEARL Municipal Plan 2010 Amendment No. 13, 2014, and Development Regulations 2010 Amendment No. 38, 2014, adopted by Council on the 29th day of July, 2014 and approved on the 26th day of August, 2014, have been registered by the Department of Municipal and Intergovernmental Affairs.

In general terms, the purpose of Municipal Plan 2010 Amendment No. 13, 2014 and Development Regulations 2010 Amendment No. 38, 2014, is to provide Council with the authority to consider an application for the future expansion plans of East Coast Hydraulics Limited at 9 Sagona Avenue.

Municipal Plan 2010 Amendment No. 13, 2014, and

Development Regulations 2010 Amendment No. 38, 2014, come into effect on the day that this notice is published in *The Newfoundland and Labrador Gazette*. Anyone who wishes to inspect a copy of these amendments may do so at the Mount Pearl City Hall, 3 Centennial Street, during normal working hours.

CITY OF MOUNT PEARL
Per: Michele Peach, Chief Administrative Officer

Oct 17

**NOTICE OF REGISTRATION
TOWN OF PARADISE
MUNICIPAL PLAN
AMENDMENT No. 33, 2014
DEVELOPMENT REGULATIONS
AMENDMENT No. 82, 2014**

TAKE NOTICE that the TOWN OF PARADISE Municipal Plan Amendment No. 33, 2014 and Development Regulations Amendment No. 82, 2014, adopted on the 19th day of August, 2014 and approved on the 16th day of September, 2014, have been registered by the Minister of Municipal and Intergovernmental Affairs.

In general terms, the amendments incorporate public buildings as a permitted use into the Mixed Development designation and zone, and add public building as a Cultural and Civic use in Schedule B - Classification of Uses of Land and Buildings of the TOWN OF PARADISE Development Regulations, 2004.

The amendments come into effect on the day that this notice is published in *The Newfoundland and Labrador Gazette*. Anyone wishing to inspect a copy of Municipal Plan Amendment No. 33, 2014 and Development Regulations Amendment No. 82, 2014 may do so at the Paradise Town Hall, 28 McNamara Drive, during normal hours of operation.

TOWN OF PARADISE
Terrilynn Smith, Town Clerk

Oct 17

**NOTICE OF REGISTRATION
TOWN OF PORTUGAL COVE-ST. PHILIP'S
MUNICIPAL PLAN AND DEVELOPMENT
REGULATIONS 2014-2024**

TAKE NOTICE that the TOWN OF PORTUGAL COVE-ST. PHILIP'S Municipal Plan and Development Regulations 2014-2024, as adopted by Council on the 15th day of July, 2014, and approved on the 9th day of September, 2014, has been registered by the Minister of Municipal and Intergovernmental Affairs.

The TOWN OF PORTUGAL COVE-ST. PHILIP'S Municipal Plan and Development Regulations 2014-2024, come into effect on the day that this notice is published in *The Newfoundland and Labrador Gazette*. Anyone who wishes to inspect a copy of the TOWN OF PORTUGAL

COVE-ST. PHILIP'S Municipal Plan and Development Regulations 2014-2024, may do so at the Town Office, Portugal Cove-St. Philip's during normal working hours.

TOWN OF PORTUGAL COVE-ST. PHILIP'S
Judy Squires, CMC, Town Clerk

Oct 17

**NOTICE OF REGISTRATION
TOWN OF WABUSH
DEVELOPMENT REGULATIONS
AMENDMENT No. 17, 2014**

TAKE NOTICE that the TOWN OF WABUSH Development Regulations Amendment No. 17, 2014, adopted by Council on the 2nd day of September, 2014, has been registered by the Minister of Municipal and Intergovernmental Affairs.

In general terms, Development Regulations Amendment No. 17, 2014, will add new definitions for Recreation (camping) Park and Recreational Vehicle to Schedule A. Recreation Parks and Camping Parks will be added to the list of examples for Recreation Open Space uses as found in the Classifications of Uses of Land and Buildings, (G) Non-Building Uses, Schedule B. The Amendment will also add a condition for Recreation Open Space to the list of conditions for the Rural Land Use Zone Table, Schedule C.

The TOWN OF WABUSH Development Regulations Amendment No. 17, 2014, comes into effect on the day that this notice is published in *The Newfoundland and Labrador Gazette*. Anyone who wishes to inspect a copy of the TOWN OF WABUSH Development Regulations Amendment No. 17, 2014, may do so at the Town Office, Wabush, during normal working hours.

TOWN OF WABUSH
Ken Anthony, CAO, Town Manager

Oct 17

LANDS ACT

**NOTICE OF INTENT
*Lands Act, c36, SNL 1991, as amended***

NOTICE IS HEREBY given that DOUGLAS W. BARNEY of Lanse-au-Loup, in the Province of Newfoundland and Labrador intends to apply to the Department of Environment and Conservation, two months from the publication of this notice, to acquire title, pursuant to Section 7 (2) of the said Act, to that piece of Crown land situated within fifteen (15) metres of the waters of a Brook, in the Electoral District of Cartwright – Lance-au-Clair for the purpose of residential and being more particularly described as follows:

*Bounded on the North by a Brook
for a distance of 43.5 metres;
Bounded on the East by*

*property of Eben Humber
For a distance of 54 metres;
Bounded on the South by
property of John Normore
For a distance of 43.5 metres;
Bounded on the West by
property of Christian Assembly
For a distance of 37 metres;
and containing an area of
approximately 1609 square metres.*

Any person wishing to object to the application must file the objection, in writing, within one month from the publication of this Notice, with reasons for it, to the Minister of Environment and Conservation, and mail to the nearest Regional Lands Office:

c/o Eastern Regional Lands Office, P.O. Box 8700, Howley Building, Higgins Line, St. John's, NL, A1B 4J6.

c/o Central Regional Lands Office, P.O. Box 2222, Gander, NL, A1V 1L7.

c/o Western Regional Lands Office, P.O. Box 2006, Sir Richard Squires Building, Comer Brook, NL, A2H 6J8.

c/o Labrador Regional Lands Office, P.O. Box 3014, Station "B", Happy Valley-Goose Bay, NL A0P 1E0.

For further information on the proposed application, please contact DOUGLAS W. BARNEY, Telephone Number (709) 927-5530.

(DISCLAIMER: *The Newfoundland and Labrador Gazette* publishes a NOTICE OF INTENT as received from the Applicant and takes no responsibility for errors or omissions in the property being more particularly described.)

Oct 17

QUIETING OF TITLES ACT

**2014 01G 6575
IN THE SUPREME COURT OF
NEWFOUNDLAND AND LABRADOR
TRIAL DIVISION (GENERAL)**

NOTICE OF APPLICATION under the *Quieting of Titles Act*, RSNL1990 cQ-3.

NOTICE is hereby given to all parties that PEARL INVESTMENTS INC. has applied to the Supreme Court of Newfoundland and Labrador, Trial Division (General), in the Judicial Centre of St. John's, to have the title to ALL THAT piece or parcel of land situate and being located between St. Thomas Line and a road historically known as Clarkes Road, near Stapleton's Road, in the Town of Paradise, in the Province of Newfoundland and Labrador, Canada, measuring 8.590 hectares and being more particularly described in a survey marked as Schedule "A" hereto annexed, of which the said Applicant claims on its own behalf to be the owner, investigated and for a declaration that the said Applicant is the absolute owner

thereof, free from those exceptions or qualifications contained in Section 22(l)(c) and (d) of the *Quieting of Titles Act*. All persons having a claim adverse to this title claimed by the Applicant should file in the Registry of the Supreme Court of Newfoundland and Labrador, Trial Division (General), Judicial Centre of St. John's, at the Courthouse Building, Duckworth Street, St. John's, Newfoundland and Labrador, Canada, AIC 5M3, particulars of such adverse claim and serve same together with an Affidavit verifying same, on the undersigned solicitors for the Applicant on or before the 10th day of November, 2014, after which date no party having any claim shall be permitted to file same or to be heard except by special leave of the Court subject to such conditions as the Court may deem just.

All such adverse claims shall then be investigated in such manner as the said Supreme Court may direct.

DATED at St. John's, in the Province of Newfoundland and Labrador, this 8th day of October, 2014.

WADDEN PEDDIGREW HOGAN
Solicitors for the Applicant
PER: Christopher Peddigrew

ADDRESS FOR SERVICE:
365-367 Duckworth Street
St. John's, NL AIC 5X3

SCHEDULE "A"

All that piece or parcel of land situate, lying and being on the southeast side of St. Thomas Line, in the Town of Paradise in the Province of Newfoundland and Labrador, Canada and being more particularly described as follows, that is to say:

BEGINNING at a point, said point being in the southeastern limit of St. Thomas Line and having co-ordinates of North 5 270 977.292 metres and East 312 388.121 metres of the modified three degree transverse Mercator projection (Zone 1, NAD 83) for the province of Newfoundland and Labrador, Canada;

THENCE running by land of George Stapleton S65°30'52"E a distance of 89.114 metres;

THENCE running N83°35'23"E a distance of 58.720 metres;

THENCE running N20°19'31"E a distance of 3.527metres;

THENCE running by land of Myles Stapleton (Registration No. 308018 - Registry of Deeds for Newfoundland and Labrador) S71°52'59"E a distance of 13.312 metres;

THENCE running S72°02'02"E a distance of 26.446 metres;

THENCE running S68°58'00"E a distance of 22.210 metres;

THENCE running S63°06'00"E a distance of 31.271 metres;

THENCE running S61°15'00"E a distance of 56.471 metres;

THENCE running S63°06'00"E a distance of 70.961 metres;

THENCE running by land of Myles Stapleton (Registration No. 308018-Registry of Deeds for Newfoundland and Labrador) and by land of Rita, Paul, Richard, Gerald, David, Myles, Joan and Anna Stapleton, Madelyn Squires and Linda Jennings S65°16'45"E a distance of 99.912 metres;

THENCE running by land of Rita, Paul, Richard, Gerald, David, Myles, Joan and Anna Stapleton, Madelyn Squires and Linda Jennings. S66°18'09"E a distance of 54.351 metres;

THENCE running S63°17'09"E a distance of 56.038 metres;

THENCE running S63°16'00"E a distance of 20.021 metres;

THENCE running S63°54'00"E a distance: of 60.350 metres;

THENCE running S64°25'03"E a distance of 51.370 metres;

THENCE running S63°17'00"E a distance of 43.874 metres;

THENCE running along the western limit of Clarkes Road (10 metres wide) S12°38'38"W a distance of 38.165 metres;

THENCE running S09°17'59"E a distance of 28.364 metres;

THENCE running S01°19'13"W a distance of 28.953 metres;

THENCE running S07°56'38"E a distance of 38.208 metres;

THENCE running S22°24'45"W a distance of 36.945 metres;

THENCE running S04°17'03"W a distance of 39.391 metres;

THENCE running by land of Peter Stapleton (portion of Volume 154 Folio 7 Crown Lands Registry for Newfoundland and Labrador) N60°09'01"W a distance of 93.700 metres;

THENCE running N15°57'24"E a distance of 23.204 metres;

THENCE running N08°26'05"E a distance of 39.500 metres;

THENCE running N61°22'27"W a distance of 74.467 metres;

THENCE running S32°45'47"W a distance of 115.248 metres;

THENCE running; along the northeastern limit of Stapleton's Road N48°05'20"W a distance of 91.440 metres;

THENCE running by land of Diane Hall (Registration No. 214580-Registry of Deeds for Newfoundland and Labrador) N32°07'15"E a distance of 93.960 metres;

THENCE running by Lots Fronting Stapleton's Road N60°52'00"W a distance of 191.338 metres;

THENCE running N60°44'00"W a distance of 53.731 metres;

THENCE running N00°35'00"E a distance of 42.911 metres;

THENCE running N71°32'00"W a distance of 36.941 metres;

THENCE running N71°45'45"W a distance of 50.596 metres;

THENCE running N71°27'00"W a distance of 91.191 metres;

THENCE running by land of Thomas Andrew Stapleton (Volume 1701 Folio 38-41, Registry of Deeds for Newfoundland and Labrador N01°53'48"E a distance of 36.148 metres;

THENCE running N65°30'52"W a distance of 56.963 metres;

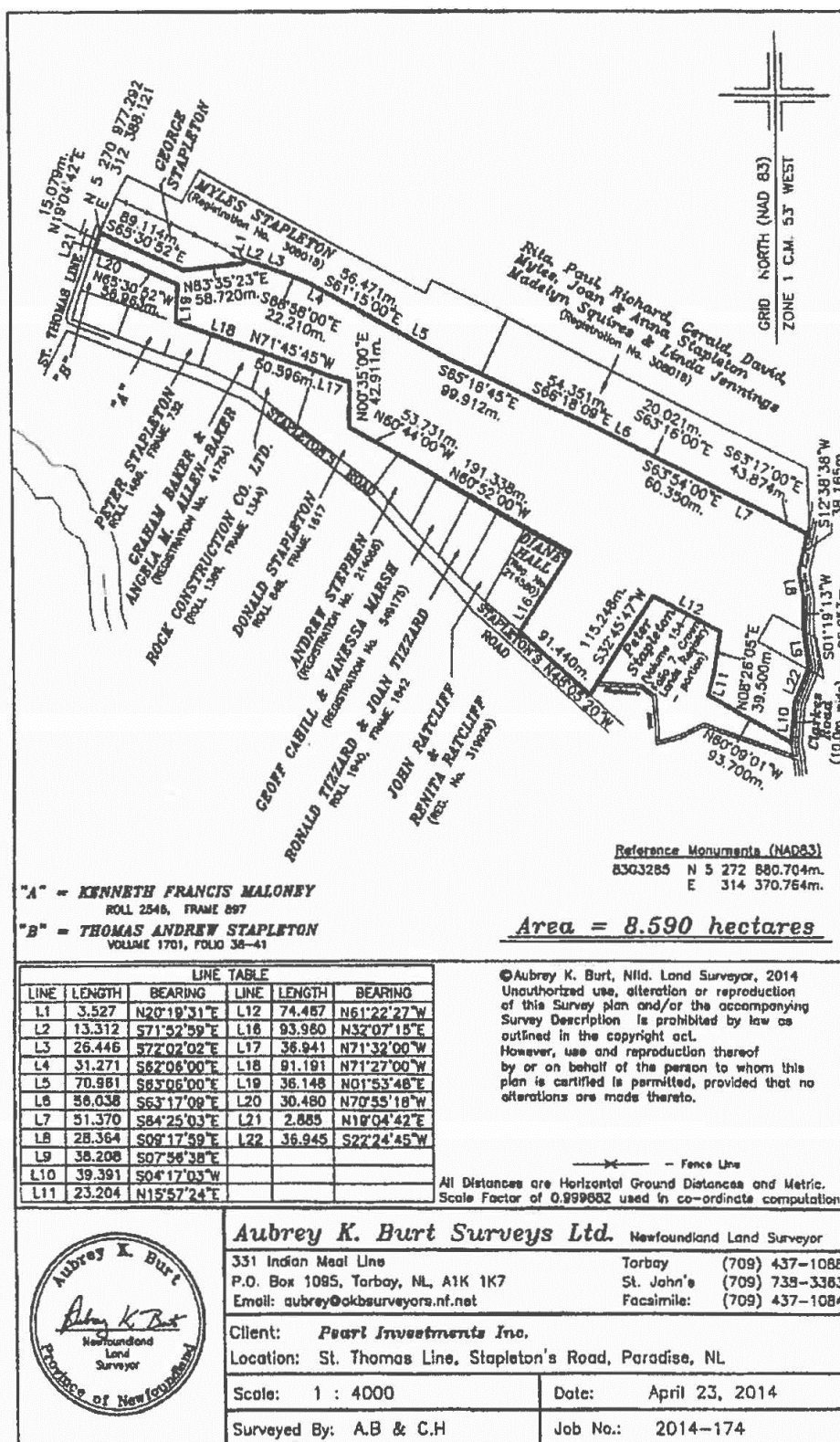
THENCE running N70°55'18"W a distance of 30.480 metres;

THENCE running along the southeastern limit of St. Thomas Line N19°04'42"E a distance of 2.885 metres;

THENCE running N19°04'42"E a distance of 15.079 metres, more or less to the principal Point of Beginning.

The above described piece or parcel of land contains an area of 8.590 hectares, the same being more particularly described hereto attached. All bearings refer to Grid North (NAD 83).

AUBREY K. BURT SURVEYS LTD.
NEWFOUNDLAND LAND SURVEYOR



2014 01G 6580
IN THE SUPREME COURT OF
NEWFOUNDLAND AND LABRADOR
TRIAL DIVISION (GENERAL)

IN THE MATTER of that piece or parcel of land situate at Riviera Drive, in the Town of Portugal Cove-St. Philip's, in the Province of Newfoundland and Labrador, and an Application by SOLO INVESTMENTS INC. pursuant to the *Quieting of Titles Act*, RSNL1990 cQ-3, as amended;

NOTICE OF APPLICATION under the *Quieting of Titles Act*, RSNL1990 cQ-3 as amended.

NOTICE IS HEREBY GIVEN to all parties that SOLO INVESTMENTS INC., a body corporate duly incorporated under the laws of the Province of Newfoundland and Labrador, has applied to the Supreme Court of Newfoundland and Labrador, Trial Division (General), to have its title to all that piece or parcel of land situate at Riviera Drive, in the Town of Portugal Cove-St. Philip's, in the Province of Newfoundland and Labrador, and more particularly described and outlined in Schedule "A" as attached hereto in this matter in the Registry of the Supreme Court of Newfoundland and Labrador, Trial Division (General), at St. John's, investigated and for a declaration that the said Applicant is the absolute owner thereof.

All persons having title adverse to the said title claimed by the Applicant shall file in the Registry of the Supreme Court of Newfoundland and Labrador, Trial Division (General), particulars of such adverse claim and serve same, together with an Affidavit verifying the same, on the undersigned solicitors for the Applicant on or before the 12th day of November, 2014, after which date no party having any claim shall be permitted to file the same or to be heard except by special leave of the Court and subject to such conditions as the Court may deem just. All adverse claims shall be investigated in such manner as the Supreme Court may direct.

DATED AT St. John's, in the Province of Newfoundland and Labrador, this 24th day of September, 2014.

MCINNES COOPER
Solicitors for the Applicant
PER: Kristen A. Penney

ADDRESS FOR SERVICE:
5th Floor, Baine Johnson Centre
10 Fort William Place
P.O. Box 5939
St. John's, NL A1C SX4

Tel: (709) 722-8735
Fax: (709) 722-1763

SCHEDULE "A"

Parcel "A" Riviera Drive, off Old Broad Cove Road, in the Town of Portugal Cove/St. Philip's, Newfoundland and Labrador.

BEGINNING at a point, said point having the following NAD83 coordinates in Zone 1 of the Transverse Mercator Projection as modified for the Province of Newfoundland and Labrador; N 5 273 222.067; E 314 618.128;

THENCE along the grid bearing of N82°01'45"W for a distance of 139.130 metres;

THENCE along the grid bearing of N59°02'06"W for a distance of 70.300 metres;

THENCE along the grid bearing of N08°27' 49"E for a distance of 190.969 metres;

THENCE along the grid bearing of S79°59'27"E for a distance of 202.322 metres;

THENCE along the grid bearing of N07°58'07"E for a distance of 211.227 metres to the POINT OF BEGINNING;

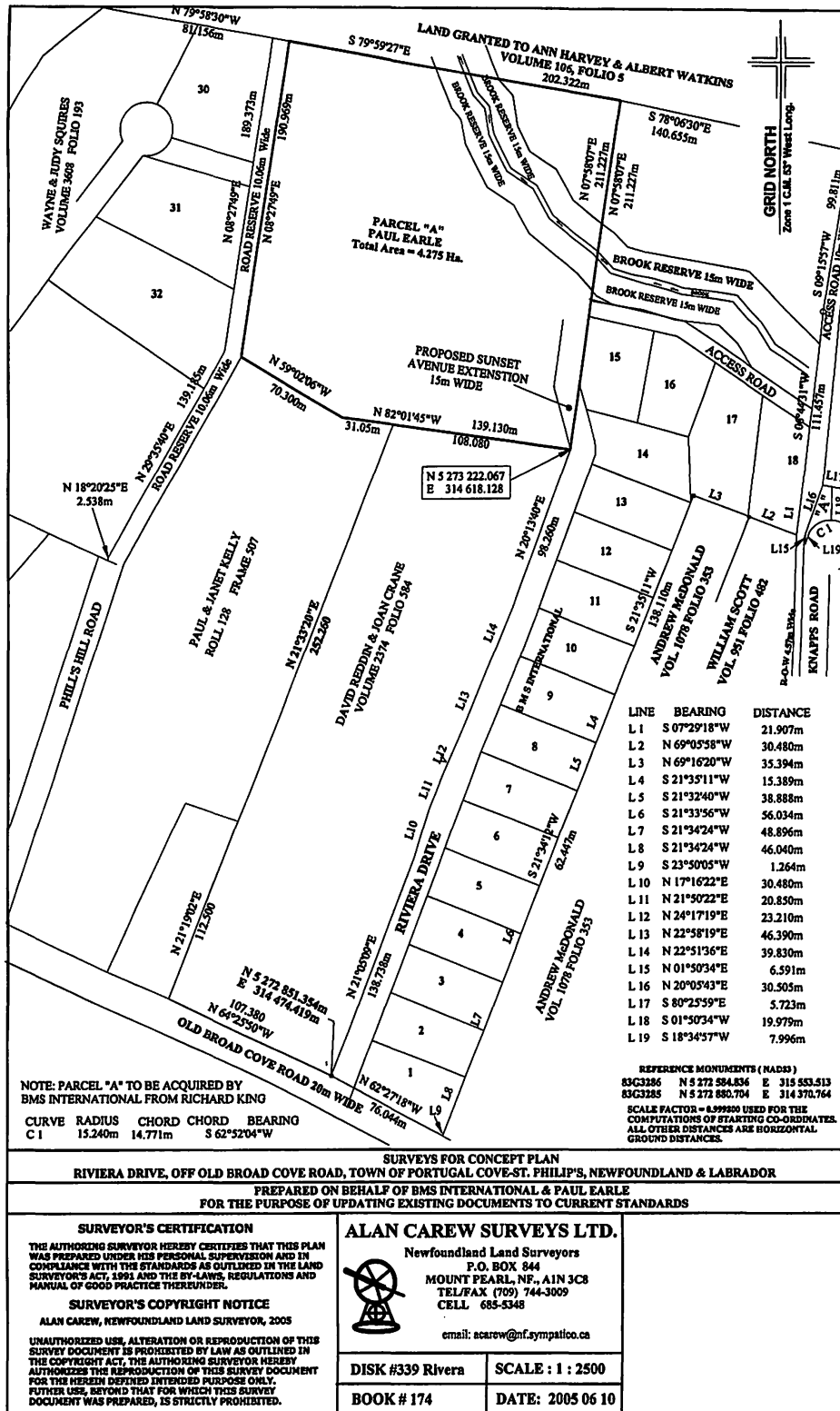
All bearings are Grid North NAD83 in Zone 1 of the Transverse Mercator Projection as modified for the Province of Newfoundland and Labrador;

The above described piece or parcel of land contains an area of 4.275 hectares, more or less, and is more particularly shown on the plan hereto attached dated 2005 04 12.

Reserving nevertheless from the above-described parcel a brook running through the parcel. This said parcel contains an area of 0.465 hectares, more or less

This description and accompanying plan are integral parts necessary to adequately reflect the legal boundary of the subject property and therefore cannot be separated.

© Alan Carew, Newfoundland Land Surveyor, 2005. Unauthorized use, alteration or reproduction of this survey document is prohibited by law as defined by the "Copyright Act". The authoring surveyor hereby authorizes the reproduction of this survey document for matters related to the herein-defined intended purpose only. Any further use is strictly prohibited.



CHANGE OF NAME ACT, 2009

Legal name changes processed during the period – September 2014.

FORMER SURNAME	FORMER GIVEN NAME	NEW SURNAME	NEW GIVEN NAME	COMMUNITY
MURRAY-COX	CORABELLA CELESTE	MURRAY	CORABELLA CELESTE	ST. JOHN'S
PERRIER	ARTHUR EDMUND	PARSONS	ARTHUR EDMUND	CORNER BROOK
CULL	ETHAN ERIC	PATEY	ETHAN ERIC	LABRADOR CITY
POKER	TOMMY	MAIKAN	TOMMY	NATUASHISH
SAVOURY	JORJA BRIANNA ROSE	SHARPE	JORJA BRIANNA ROSE	PARADISE
SAVOURY	JONAH MATTHEWS	SHARPE	JONAH MATTHEWS	PARADISE
BUTLER-GIBBONS	SOPHIA LYNN	GIBBONS	SOPHIA LYNN	ST. JOHN'S
HANN	PARKER BERNARD	POPE	PARKER BERNARD	STEPHENVILLE
YOUNG	RILEY JONATHAN MICHAEL	SWYERS	RILEY JONATHAN MICHAEL	STEPHENVILLE
YOUNG	LOGAN ANTHONY REECE	SWYERS	LOGAN ANTHONY REECE	NEWTOWN
RIDOUT	ELDON JAMES	RIDEOUT	ELDON JAMES	ST. JOHN'S
FELLS	ANITA SHARON	KORA	ANITA SHARON	BAY ROBERTS
EDMUNDS	MIREYA PATRICIA	PARSONS	MIREYA PATRICIA	GRAND FALLS-WINDSOR
CAREY	AARON GLEN	BAKER	AARON GLEN	SHEARSTOWN
CASPER	BRIANNA KATHERINE NICOLE	EARLE	BRIANNA KATHERINE NICOLE	CONCEPTION BAY SOUTH
SHEARS	MADISON LYNN JOY	BUTLER	MADISON LYNN JOY	GANDER
HODDER	DAWSON MATTHEW STERLING	HODDER-PITTMAN	DAWSON MATTHEW STERLING	L'ANSE AU LOUP
FIRMAJE	JESSE TRAVIS	FIRMAJE EARLE	JESSE TRAVIS	SUMMERSIDE
ALCORN	CHRISTOPHER ANTHONY THOMAS	OTTO	CHRISTOPHER ANTHONY THOMAS	DUNVILLE
JAMES	MASON TYLER	DUKE	MASON FERGUS	PORTUGAL COVE-ST. PHILIP'S
DOWNEY	NICHOLAS RONALD	DAY	NICHOLAS RONALD	STONEVILLE
HODDER	CECIL NORMAN	HOFF	CECIL NORMAN	ST. JOHN'S
BUTLER	LORILYNN	MCCARTHY	LORILYNN	CORMACK
PAYNE	MICHAEL RODNEY	HIMMLER	MICHAEL HEINRICH	ST. JOHN'S
CARROLL	CHANDRA LEE ANNE	HOLMES	TEMPERANCE GWENHWYFAR ANNE	MARYSTOWN
LAITE	MICHAEL LENARD GEORGE	RYAN	MICHAEL LEONARD GEORGE	ST. JOHN'S
SPARKES	BRYSON ADAM CYRIL	O'NEILL	BRYSON ADAM CYRIL	ST. JOHN'S
SPARKES	MORGANNE RUBY ANTOINETTE	O'NEILL	MORGANNE RUBY ANTOINETTE	WABUSH
POWER	CODY JOHN	GAUTHIER	CODY JOHN	CONCEPTION BAY SOUTH
ABBOTT	OLIVIA CHELSEY TRYPHENIA	WHITE	OLIVIA CHELSEY TRYPHENIA	ST. ALBAN'S
WILCOTT	ELIZABETH DIANNE	WILCOTT	DIANNE ELIZABETH	HAPPY VALLEY-GOOSE BAY
HIBBS	LOGAN ARTHUR JAMES	KEATING	LOGAN ARTHUR JAMES	GRAND FALLS-WINDSOR
WHEELER	GERALD PATRICK	BARKER	GERALD PATRICK	ST. JOHN'S
AHMED	YUSUF ESMAT DAFALLA	LINTHORNE	YUSUF MAHLIK	

Dated this 3rd day of October, 2014.

SERVICE NL
Ken Mullaly, Registrar
Vital Statistics Division

TRUSTEE ACT
ESTATE NOTICE

IN THE MATTER OF the Estate of RONALD GEORGE BUSSEY, Late, of St. John's in the Province of Newfoundland and Labrador, Gentleman, Deceased.

All persons claiming to be creditors of, or who have any claims or demands upon or affecting the Estate of the above named RONALD GEORGE BUSSEY, Deceased, are hereby requested to send particulars of same, in writing, duly attested, to the undersigned Solicitors for the Executor of the Estate of the said RONALD GEORGE BUSSEY, on or before the 11th day of November, 2014, after which date the Executor will proceed to distribute the said Estate, having regard only to the claims of which he then shall have had notice.

DATED at St. John's, aforesaid, this 7th day of October, 2014.

WELLS & COMPANY PLC INC.
Solicitors for the Executor
PER: Graham A. Wells, Q.C., J.D., T.E.P.

ADDRESS FOR SERVICE:
P.O. Box 26111
10 Freshwater Road
St. John's, NL A1E 0A5

Tel: (709) 739-7768 Ext. 111
Fax: (709) 749-1444

Oct 17

ESTATE NOTICE

IN THE MATTER of the Estate and Effects of Late BERTHA HALE of the Town of Twillingate, in the Province of Newfoundland and Labrador, Retired Person, Deceased.

All persons claiming to be creditors of or who have any claims or demands upon or affecting the Estate of BERTHA HALE, the aforesaid deceased, who died at Town of Twillingate, in the Province of Newfoundland and Labrador on or about the 19th day of May, 2013, are hereby requested to send particulars thereof in writing, duly attested, to the undersigned Solicitor for the Executrix of the Estate on or before the 30th day of October, 2014 after which date the Executrix will proceed to distribute the said Estate having regard only to the claims of which she shall then have had notice.

DATED at the Town of Gander, Newfoundland and Labrador, this 10th day of October, 2014.

BONNELL LAW
Solicitor for the Executrix
PER: R. Archibald Bonnell

ADDRESS FOR SERVICE:
P.O. Box 563
218 Airport Boulevard
Gander, NL A1V 2E1

Tel: (709) 651-4949
Fax: (709) 651-4951

Oct 17 & 24



THE NEWFOUNDLAND AND LABRADOR GAZETTE

PART II

SUBORDINATE LEGISLATION FILED UNDER THE STATUTES AND SUBORDINATE LEGISLATION ACT

Vol. 89

ST. JOHN'S, FRIDAY, OCTOBER 17, 2014

No. 42

NEWFOUNDLAND AND LABRADOR REGULATION

NLR 81/14



**NEWFOUNDLAND AND LABRADOR
REGULATION 81/14**

*Proclamation re: By-Election for the Electoral District of
Conception Bay South
under the
Elections Act, 1991, and House of Assembly Act
(O.C. 2014-316)*

(Filed October 14, 2014)

*ELIZABETH THE SECOND, by the Grace of God of the
United Kingdom, Canada and Her Other Realms and Territories
QUEEN, Head of the Commonwealth, Defender of the Faith.*

J. DEREK GREEN
Administrator

HEATHER JACOBS
Acting Deputy Attorney General

TO ALL TO WHOM THESE PRESENTS SHALL COME,

GREETING;

A PROCLAMATION

WHEREAS under the authority of section 57 of the *Elections Act, 1991* (the "Act"), and pursuant to section 54 of the *House of Assembly Act*, upon the occurrence of a vacancy by resignation of the sitting member on the 18th day of September, 2014, we are directed to issue a Writ of Election for the election of a Member to the House of Assembly;

AND WHEREAS it is Our will and pleasure that a Writ of Election be issued for the Election of One Member to serve in the House of Assembly of Our Province of Newfoundland and Labrador for the Electoral District of Conception Bay South;

NOW KNOW YE that We do by this Our Proclamation direct that a Writ of Election for the Electoral District of Conception Bay South be issued;

AND WE DO further direct

1. That the date set to be the last day for nomination of candidates for the Election is Sunday, the 26th day of October, 2014;
2. That the place for the nomination of candidates is the Sobeys Square Plaza, 350 Conception Bay Highway, Conception Bay South, NL, A1X 7A3;
3. That the day of polling for the Election is Wednesday, the 5th day of November, 2014; and
4. That the Writ of Election shall be issued on Tuesday, the 14th day of October, 2014 and be returnable at the time and in the manner prescribed by Division E of the Act, together with the return of the person to whom the writ is directed endorsed thereon, and all other documents and other things required to be transmitted to the Chief Electoral Officer by virtue thereof.

IN WITNESS WHEREOF we have caused the Great Seal of Our province to be hereunto affixed.

WITNESS: Our trusty and well-beloved the Honourable J. Derek Green, Chief Justice of the Supreme Court of Newfoundland and Labrador Court of Appeal, Administrator in and for Our Province of Newfoundland and Labrador.

AT the City of St. John's this 14th day of October, in the year of Our Lord two thousand and fourteen in the sixty-third year of Our Reign.

BY COMMAND,

COLLEEN JANES
Acting Registrar General

Index

PART I

Change of Name Act, 2009 – Notice	381
City of St. John's Act, 2009 – Notice	373
Lands Act – Notice	375
Mineral Act– Notice	371
Quieting of Titles – Notices	375
Trustee Act – Notices	382
Urban and Rural Planning Act, 2000 – Notices	373

PART II

CONTINUING INDEX OF SUBORDINATE LEGISLATION

Title of Act and Subordinate Legislation made thereunder	CNLR or NL Reg.	Amendment	NL Gazette Date & Page No.
Elections Act, 1991 and House of Assembly Act			
Proclamation re: By-Election for the Electoral District of Conception Bay South	NLR 81/14	New Extraordinary Gazette Oct 14/14	Oct 17/14 p 647

The Newfoundland and Labrador Gazette is published from the Office of the Queen's Printer.

Copy for publication must be received by **Friday, 4:30 p.m.**, seven days before publication date to ensure inclusion in next issue.

Advertisements must be submitted in either PDF format or as a MSWord file. When this is not possible, advertisements must be either typewritten or printed legibly, separate from covering letter. Number of insertions required must be stated and the names of all signing officers typewritten or printed.

Copy may be mailed to the address below, faxed to (709) 729-1900 or emailed to queensprinter@gov.nl.ca.

Advertising rates are available upon request. Subscription rate for *The Newfoundland and Labrador Gazette* is \$125.00 for 52 weeks plus applicable tax (\$131.25). Weekly issues of \$3.00 per copy, plus tax payable in advance.

All cheques, money orders, etc., should be made payable to THE NEWFOUNDLAND EXCHEQUER ACCOUNT and all correspondence should be addressed to: Office of the Queen's Printer, P. O. Box 8700, Ground Floor, East Block, Confederation Building, St. John's, NL A1B 4J6. Telephone (709) 729-3649. Fax: (709) 729-1900.

Web Site: <http://www.servicenl.gov.nl.ca/printer/index.html>

**Place your order by contacting:
Office of the Queen's Printer
Confederation Building, East Block
St. John's, NL A1B 4J6
Telephone: (709) 729-3649 Fax: (709) 729-1900
email: queensprinter@gov.nl.ca**

**Government Information Product
Publication Rate Mail
G.S.T. # R107442683**

All requests for Subscription and Legislation MUST be prepaid.