

No Subordinate Legislation  
received at  
time of printing



# THE NEWFOUNDLAND AND LABRADOR GAZETTE

## PART I

PUBLISHED BY AUTHORITY

Vol. 90

ST. JOHN'S, FRIDAY, AUGUST 14, 2015

No. 33

### WINDING-UP AND RESTRUCTURING ACT

#### IN THE MATTER OF THE WINDING-UP OF THE INSURANCE BUSINESS IN CANADA OF RELIANCE INSURANCE COMPANY- CANADIAN BRANCH ("Reliance Canada")

#### IMPORTANT NOTICE REGARDING A PROPOSED SETTLEMENT AND DISCHARGE OF ALL CLAIMS AND POTENTIAL CLAIMS IN CONNECTION WITH INSURANCE POLICIES ISSUED TO OR FOR THE BENEFIT OF ROTHMANS, BENSON & HEDGES INC. ("RBH") AND ITS RELATED ENTITIES

On December 3, 2001, the Ontario Superior Court of Justice (the "Court") ordered the winding-up of Reliance Canada, under the provisions of the *Winding-up and Restructuring Act*. The Court appointed KPMG Inc. as liquidator (the "Liquidator").

This Notice is being given pursuant to the Order of the Court made July 15, 2015 (the "Directions Order"). The Liquidator hereby gives notice that it has brought a motion (the "RBH Approval Motion") returnable before the Court on November 2, 2015, or such other date as may be set by the Court. The RBH Approval Motion and the relief sought therein may affect you and any claims or potential claims that you may have against Reliance Canada, or any of its related parties, arising by virtue of or in connection with policies of insurance issued by Reliance Canada (the "Reliance Policies") to or for the benefit of RBH.

The RBH Approval Motion seeks an Order of the Court approving the full and final settlement and release agreement dated May 7, 2015 entered into by Reliance Canada and RBH, and other related relief. This relief includes a declaration that any and all claims or potential claims against Reliance Canada and its related parties, in connection with or arising by virtue of claims against RBH or entities related to RBH which may be insured by the Reliance Policies, will be deemed to be completely released and discharged. The foregoing includes (but is not limited to) any claims in connection with the Reliance Policies pursuant to the direct action provisions of the *Code Civil du Québec* or any other statutory provisions granting rights of recovery against Reliance Canada.

This Notice and the summary herein of the RBH Approval Motion do not replace and are not a substitute for the materials filed in support of the RBH Approval Motion. You may obtain a copy of such materials, as well as a copy of the Directions Order, from the Liquidator's website at [www.relianceinsurance.ca](http://www.relianceinsurance.ca) or from the undersigned.

Please note that the Directions Order provides that any person who intends to appear and make submissions at the hearing of the RBH Approval Motion ("Responding Party") shall serve a Notice of Appearance, in the form attached to the Directions Order, on counsel for the Liquidator, so as to be received by such counsel on or before September 16, 2015.

Further, the Directions Order provides that any Responding Party who will rely on responding materials at the hearing of the RBH Approval Motion shall, on or before October 13, 2015: (i) serve such responding materials on counsel for the Liquidator and on each Responding Party, and (ii) file such materials with the Court.

KPMG Inc.,  
Liquidator, Reliance Insurance Company  
Canadian Branch  
Janine M. Bradley, Senior Manager

Bay-Adelaide Centre  
333 Bay Street, Suite 4600  
Toronto, ON M5H 2S5

Aug 14

---

**DANS L'AFFAIRE DE LA LIQUIDATION DES ACTIVITÉS D'ASSURANCE AU CANADA DE LA SUCCURSALE  
CANADIENNE DE LA RELIANCE INSURANCE COMPANY (« Reliance Canada »)**

**AVIS IMPORTANT CONCERNANT UNE PROPOSITION DE PAIEMENT LIBÉRATOIRE DE TOUTES LES  
RÉCLAMATIONS ACTUELLES ET POTENTIELLES EFFECTUÉES DANS LE CADRE DE POLICES  
D'ASSURANCE ÉMISES AU NOM OU AU BÉNÉFICE DE ROTHMANS, BENSON & HEDGES INC.  
(« RBH ») ET DE SES PARTIES LIÉES**

Le 3 décembre 2001, la Cour supérieure de justice de l'Ontario (la « Cour ») a ordonné la liquidation de Reliance Canada, en vertu de la *Loi sur les liquidations et les restructurations*. KPMG Inc. a été nommé liquidateur (le « liquidateur ») par la Cour.

Le présent avis est signifié en application d'une ordonnance de la Cour délivrée le 15 juillet 2015 (l'« ordonnance d'instructions »). Le liquidateur fait savoir par la présente qu'il a présenté une requête (la « requête d'approbation RBH ») rapportable devant la Cour le 2 novembre 2015, ou à une autre date déterminée par la Cour. La requête d'approbation RBH et les mesures réparatoires réclamées peuvent avoir des incidences pour vous et toute réclamation actuelle ou potentielle que vous pourriez présenter ou avoir présentée contre Reliance Canada, ou l'une ou l'autre de ses parties liées, en vertu ou en conséquence de polices d'assurance émises par Reliance Canada (les « polices Reliance ») au nom ou au bénéfice de RBH.

La requête d'approbation RBH vise à obtenir une ordonnance de la Cour autorisant l'accord de règlement libératoire intégral et définitif établi en date du 7 mai 2015 entre Reliance Canada et RBH, et d'autres mesures réparatoires connexes. Ces dernières comprennent une déclaration selon laquelle Reliance Canada et ses parties liées sont réputées être entièrement libérées et dégagées de toute responsabilité à l'égard de toute réclamation actuelle ou potentielle en vertu ou en conséquence de réclamations faites à l'encontre de RBH ou de ses parties liées qui seraient couvertes par les polices Reliance, y compris (sans s'y limiter) toute réclamation faite dans le cadre des polices Reliance, en application des dispositions du *Code civil du Québec* concernant le recours direct ou de toute autre disposition législative accordant des droits de recouvrement contre Reliance Canada.

Le présent avis et le sommaire de la requête d'approbation RBH qui y est présenté ne remplacent pas les documents déposés à l'appui de la requête d'approbation RBH et ne peuvent s'y substituer. Vous pouvez obtenir une copie desdits documents ou de l'ordonnance d'instructions sur le site du liquidateur, à l'adresse [www.relianceinsurance.ca](http://www.relianceinsurance.ca), ou auprès de la soussignée.

Veillez prendre note qu'en vertu de l'ordonnance d'instructions, toute personne ayant l'intention d'assister et de présenter des observations à l'audience de la requête d'approbation RBH (la « partie intimée ») doit, pour être entendue par le conseil du liquidateur, signifier à ce dernier un avis de comparution, au moyen du formulaire joint à l'ordonnance d'instructions, le ou avant le 16 septembre 2015.

L'ordonnance d'instructions prévoit en outre que toute partie intimée qui entend utiliser des documents à l'appui de son intervention lors de l'audience de la requête d'approbation RBH doit, le ou avant le 13 octobre 2015 : a) signifier les documents en question au conseil du liquidateur et à chacune des parties intimées, et b) déposer les documents en question auprès de la Cour.

KPMG Inc.,  
Liquidateur de Reliance Insurance Company –  
Succursale canadienne  
Janine M. Bradley, directrice principale

Bay Adelaide Centre  
333 Bay Street, Suite 4600  
Toronto (Ontario) M5H 2S5

Aug 14

---

**IN THE MATTER OF THE WINDING-UP OF THE INSURANCE BUSINESS IN CANADA OF RELIANCE  
INSURANCE COMPANY- CANADIAN BRANCH (“Reliance Canada”)**

**IMPORTANT NOTICE REGARDING A PROPOSED SETTLEMENT AND DISCHARGE OF ALL CLAIMS  
AND POTENTIAL CLAIMS IN CONNECTION WITH INSURANCE POLICIES ISSUED TO OR FOR THE  
BENEFIT OF IMPERIAL TOBACCO CANADA LIMITED (“ITCAN”) AND ITS RELATED ENTITIES**

On December 3, 2001, the Ontario Superior Court of Justice (the “Court”) ordered the winding-up of Reliance Canada, under the provisions of the *Winding-up and Restructuring Act*. The Court appointed KPMG Inc. as liquidator (the “Liquidator”).

This Notice is being given pursuant to the Order of the Court made July 15, 2015 (the “Directions Order”). The Liquidator hereby gives notice that it has brought a motion (the “ITCAN Approval Motion”) returnable before the Court on November 2, 2015, or such other date as may be set by the Court. The ITCAN Approval Motion and the relief sought therein may affect you and any claims or potential claims that you may have against Reliance Canada, or any of its related parties, arising by virtue of or in connection with policies of insurance issued by Reliance Canada (the “Reliance Policies”) to or for the benefit of ITCAN.

The ITCAN Approval Motion seeks an Order of the Court approving the full and final settlement and release agreement dated June 17, 2015 entered into by Reliance Canada and ITCAN, and other related relief. This relief includes a declaration that any and all claims or potential claims against Reliance Canada and its related parties, in connection with or arising by virtue of claims against ITCAN or entities related to ITCAN which may be insured by the Reliance Policies, will be deemed to be completely released and discharged. The foregoing includes (but is not limited to) any claims in connection with the Reliance Policies pursuant to the direct action provisions of the *Code Civil du Québec* or any other statutory provisions granting rights of recovery against Reliance Canada.

This Notice and the summary herein of the ITCAN Approval Motion do not replace and are not a substitute for the materials filed in support of the ITCAN Approval Motion. You may obtain a copy of such materials, as well as a copy of the Directions Order, from the Liquidator’s website at [www.relianceinsurance.ca](http://www.relianceinsurance.ca) or from the undersigned.

Please note that the Directions Order provides that any person who intends to appear and make submissions at the hearing of the ITCAN Approval Motion (“Responding Party”) shall serve a Notice of Appearance, in the form attached to the Directions Order, on counsel for the Liquidator, so as to be received by such counsel on or before September 16, 2015.

Further, the Directions Order provides that any Responding Party who will rely on responding materials at the hearing of the ITCAN Approval Motion shall, on or before October 13, 2015: (i) serve such responding materials on counsel for the Liquidator and on each Responding Party, and (ii) file such materials with the Court.

KPMG Inc.,  
Liquidator, Reliance Insurance Company  
Canadian Branch

Janine M. Bradley, Senior Manager

Bay-Adelaide Centre  
333 Bay Street, Suite 4600  
Toronto, ON M5H 2S5

Aug 14

---

**DANS L'AFFAIRE DE LA LIQUIDATION DES ACTIVITÉS D'ASSURANCE AU CANADA DE LA SUCCURSALE  
CANADIENNE DE LA RELIANCE INSURANCE COMPANY (« Reliance Canada »)**

**AVIS IMPORTANT CONCERNANT UNE PROPOSITION DE PAIEMENT LIBÉRATOIRE DE TOUTES LES  
RÉCLAMATIONS ACTUELLES ET POTENTIELLES EFFECTUÉES DANS LE CADRE DE POLICES  
D'ASSURANCE ÉMISES AU NOM OU AU BÉNÉFICE D'IMPERIAL TOBACCO CANADA LIMITÉE (« ITCAN »)  
ET DE SES PARTIES LIÉES**

Le 3 décembre 2001, la Cour supérieure de justice de l'Ontario (la « Cour ») a ordonné la liquidation de Reliance Canada, en vertu de la *Loi sur les liquidations et les restructurations*. KPMG Inc. a été nommé liquidateur (le « liquidateur ») par la Cour.

Le présent avis est signifié en application d'une ordonnance de la Cour délivrée le 15 juillet 2015 (l'« ordonnance d'instructions »). Le liquidateur fait savoir par la présente qu'il a présenté une requête (la « requête d'approbation ITCAN ») rapportable devant la Cour le 2 novembre 2015, ou à une autre date déterminée par la Cour. La requête d'approbation ITCAN et les mesures réparatoires réclamées peuvent avoir des incidences pour vous et toute réclamation actuelle ou potentielle que vous pourriez présenter ou avoir présentée contre Reliance Canada, ou l'une ou l'autre de ses parties liées, en vertu ou en conséquence de polices d'assurance émises par Reliance Canada (les « polices Reliance ») au nom ou au bénéfice d'ITCAN.

La requête d'approbation ITCAN vise à obtenir une ordonnance de la Cour autorisant l'accord de règlement libératoire intégral et définitif établi en date du 17 juin 2015 entre Reliance Canada et ITCAN, et d'autres mesures réparatoires connexes. Ces dernières comprennent une déclaration selon laquelle Reliance Canada et ses parties liées sont réputées être entièrement libérées et dégagées de toute responsabilité à l'égard de toute réclamation actuelle ou potentielle en vertu ou en conséquence de réclamations faites à l'encontre d'ITCAN ou de ses parties liées qui seraient couvertes par les polices Reliance, y compris (sans s'y limiter) toute réclamation faite dans le cadre des polices Reliance, en application des dispositions du *Code civil du Québec* concernant le recours direct ou de toute autre disposition législative accordant des droits de recouvrement contre Reliance Canada.

Le présent avis et le sommaire de la requête d'approbation ITCAN qui y est présenté ne remplacent pas les documents déposés à l'appui de la requête d'approbation ITCAN et ne peuvent s'y substituer. Vous pouvez obtenir une copie desdits documents ou de l'ordonnance d'instructions sur le site du liquidateur, à l'adresse [www.relianceinsurance.ca](http://www.relianceinsurance.ca), ou auprès de la soussignée.

Veuillez prendre note qu'en vertu de l'ordonnance d'instructions, toute personne ayant l'intention d'assister et de présenter des observations à l'audience de la requête d'approbation ITCAN (la « partie intimée ») doit, pour être entendue par le conseil du liquidateur, signifier à ce dernier un avis de comparution, au moyen du formulaire joint à l'ordonnance d'instructions, le ou avant le 16 septembre 2015.

L'ordonnance d'instructions prévoit en outre que toute partie intimée qui entend utiliser des documents à l'appui de son intervention lors de l'audience de la requête d'approbation ITCAN doit, le ou avant le 13 octobre 2015 : a) signifier les documents en question au conseil du liquidateur et à chacune des parties intimées, et b) déposer les documents en question auprès de la Cour.

KPMG Inc.,  
Liquidateur de Reliance Insurance Company –  
Succursale canadienne  
Janine M. Bradley, directrice principale

Bay Adelaide Centre  
333 Bay Street, Suite 4600  
Toronto (Ontario) M5H 2S5

Aug 14

---

CHANGE OF NAME ACT, 2009

Legal name changes processed during the period – July 2015.

FORMER SURNAME	FORMER GIVEN NAME	NEW SURNAME	NEW GIVEN NAME	COMMUNITY
HEARN	TORI ANNIE NICOLE HEATHER	LANE	TORI ANNIE NICOLE HEATHER	HAPPY VALLEY-GOOSE BAY
PARSONS	KELTON JAMES	PIERCEY	KELTON JAMES	HEART'S CONTENT
ALEXANDER	ETHAN ROGER	YOUNG	ETHAN ROGER	STEPHENVILLE CROSSING
MCNEIL	COLIN FRANCIS	WARREN	FRANCIS	ST. JOHN'S
MILLIE	PAULUS CHESLEY EUGENE MARTIN JULIUS	ITTULAK	CHESLEY MARTIN PAULUS EUGENE JULIUS	NAIN
CORBIN	BRANDON EDWARD	COLSON	BRANDON EDWARD	CORNER BROOK
WEBBER	VELSIE MYRTLE EILEEN	YOUNG	VELSIE MYRTLE EILEEN	BEACHSIDE
HUNT	OLIVIA STEPHANIE HOPE	PETTEN	OLIVIA STEPHANIE HOPE	CLARKES BEACH
TREMBLETT	BASTIAN WILLIAM FREDRICK	HUMBER	BASTIAN WILLIAM FREDRICK	GRAND FALLS-WINDSOR
DUBE	WILLIAM	DUBE	WILLIAM	LOURDES
SQUIRES	MEGAN LEIGH	EDWARDS	MEGAN LEIGH	CONCEPTION BAY SOUTH
GABRIEL	DEREK YZERMAN JADEN	PENUNSI	DEREK JADEN	SHEHATSHU
KEEFE	JORDAN JEFFREY	HUGHES-KEEFE	JORDAN JEFFREY	GANDER
LEE	CHRISTINA	REID	THALIA LEE	GARNISH
PARSONS	CAROL ANNE	POKTER	CAROL ANNE	HARBOUR GRACE
MCKENZIE	HECTOR WILLIAM	MACKENZIE	HECTOR WILLIAM	GRAND FALLS-WINDSOR
GREEN	DEANNA ANGELA	PITTMAN	DEANNA ANGELA	CLARENVILLE
CULL	NICHOLAS DARREN	JANES	NICHOLAS DARREN	GRAND FALLS-WINDSOR
WELCOME	JOYCE MARLENE BOONE	BOONE	JOYCE ARLENE	ST. JOHN'S
COLLINS	AARON ARCHIE	CROSS	AARON ARCHIE	HARE BAY
SEARS	JOSEPH REGINALD	WHELAN	JOSEPH REGINALD	ST. JOHN'S
MORGAN-SMITHERAM	HAYDEN KRYSTAL-ANN	SMITHERAM	HAYDEN KRYSTAL-ANN	HAPPY VALLEY-GOOSE BAY
HEMMEON	JODY GRANT	HEMEON	JODY GRANT	BOTWOOD
CROFT	EDWARD VINCENT	MORGAN	EDWARD VINCENT	HAPPY VALLEY-GOOSE BAY
SANSON	KAYLA MARIE	MILES	MCALA KENYA ADLAYHA ANN MARIE SALEM	CLARENVILLE
THOMPSON	KYLE ALEXANDER	TAYLOR-COLBERT	KYLE ALEXANDER	ST. JOHN'S

FORMER SURNAME	FORMER GIVEN NAME	NEW SURNAME	NEW GIVEN NAME	COMMUNITY
SMITH	KRISTIAN TOMAS SIMMONS	SIMMONS	KRISTIAN TOMAS	ST. JOHN'S
HUDSON	ABIGAYLE HALEY	CHEESEMAN	ABIGAYLE HALEY	TORBAY
BOIVIN	CARA JOANNE ANGEL	CARROLL	CARA JOANNE ANGEL	ST. JOHN'S
LUCAS-EARLE	SHYANNE PAULINE	LUCAS	SHYANNE PAULINE	TORBAY
SPENCER-CROCKER	DYLAN MICHAEL	CROCKER	DYLAN MICHAEL	MARYSTOWN
JESSO	QUINN ROBYN JANE	GRIFFIN	QUINN ROBYN JANE	CORNER BROOK
JESSO	COLE CHRISTOPHER	GRIFFIN	COLE CHRISTOPHER	CORNER BROOK
WHELAN	LEO PATRICK	WHALEN	LEO PATRICK	ST. JOHN'S
TUCKER-SULLIVAN	JOHN PATRICK	SULLIVAN	JOHN PATRICK	GOULDS
PENTNEY	JASPER CHARLES	KENNEDY-PENTNEY	JASPER CHARLES	ST. JOHN'S
FUDGE	RYAN WILBUR ROBERT	WINSOR	RYAN WILBUR ROBERT	LEWISPORTE
SKINNER	NIKITA EMILY PEARL	KEARLEY	NIKITA EMILY PEARL	HEAD BAY DESPOIR
FURGUSON	WILLIAM GRAHAM KENNEDY	KENNEDY	GRAHAM	ST. JOHN'S
PARSONS	JAX TYSON	PYNN	JAX TYSON	ST. JOHN'S
WOODROW	DEVON WILLIAM BRANDON	DOYLE	DEVIN WILLIAM	ST. JOHN'S
PITTMAN	DEANNA GRACE	ELLSWORTH	DEANNA GRACE	CONCEPTION BAY SOUTH
PENTNEY	SOPHIA MEADOW	KENNEDY-PENTNEY	SOPHIA MEADOW	ST. JOHN'S

Dated this 5<sup>th</sup> day of August, 2015.

SERVICE NL  
Ken Mullaly, Registrar  
Vital Statistics

**URBAN AND RURAL PLANNING ACT, 2000**

**NOTICE OF REGISTRATION  
CITY OF MOUNT PEARL  
DEVELOPMENT REGULATIONS 2010  
AMENDMENT NO. 45, 2015  
(HERITAGE ZONE USE AMENDMENT)**

TAKE NOTICE that MOUNT PEARL Development Regulations 2010 Amendment No. 45, 2015, adopted by Council on the 16<sup>th</sup> day of June, 2015, has been registered by the Department of Municipal and Intergovernmental Affairs.

In general terms, the purpose of MOUNT PEARL Development Regulations 2010 Amendment No. 45, 2015, is to accommodate personal service uses and clinics as discretionary uses in heritage (HR) use zones.

MOUNT PEARL Development Regulations 2010 Amendment No. 45, 2015, comes into effect on the day that this notice is published in *The Newfoundland and Labrador Gazette*. Anyone who wishes to inspect a copy of this amendment may do so at the Mount Pearl City Hall, 3 Centennial Street, during normal working hours.

CITY OF MOUNT PEARL  
Michele Peach, Chief Administrative Officer

Aug 14

---

**NOTICE OF REGISTRATION  
TOWN OF CONCEPTION BAY SOUTH  
DEVELOPMENT REGULATIONS  
AMENDMENT NO. 15, 2015**

TAKE NOTICE that the TOWN OF CONCEPTION BAY SOUTH Development Regulations Amendment No. 15, 2015, adopted on the 16<sup>th</sup> day of June, 2015, has been registered by the Minister of Municipal and Intergovernmental Affairs.

In general terms, the purpose of this Development Regulations Amendment No. 15, 2015 is to accommodate drive through food services within the Commercial Main Street (C-1) zone.

This amendment comes into effect on the day that this notice is published in *The Newfoundland and Labrador Gazette*. Anyone who wishes to inspect a copy may do so at the Planning Department located in the Villa Nova Plaza (2<sup>nd</sup> Floor), 120 Conception Bay Highway, Manuels, during normal working hours.

TOWN OF CONCEPTION BAY SOUTH  
Theresa Murphy, Planning Clerk

Aug 14

---

**NOTICE OF REGISTRATION  
TOWN OF MARYSTOWN  
MUNICIPAL PLAN  
AMENDMENT NO. 29, 2015  
AND  
DEVELOPMENT REGULATIONS  
AMENDMENT NO. 38, 2015**

TAKE NOTICE that the TOWN OF MARYSTOWN Municipal Plan Amendment No. 29, 2015 and Development Regulations Amendment No. 38, 2015 as adopted on the 5<sup>th</sup> day of May, 2015 have been approved on the 2<sup>nd</sup> day of June, 2015 and have been registered by the Minister of Municipal and Intergovernmental Affairs.

In general terms the purpose of the Municipal Plan Amendment No. 29 and Development Regulations Amendment No. 38 is to accommodate additional residential development off Main Road in Little Bay by redesignating and rezoning the area from Rural to Residential.

The Municipal Plan Amendment No. 29, 2015 and Development Regulations Amendment No. 38, 2015 come into effect on the day that this notice is published in *The Newfoundland and Labrador Gazette*.

Anyone who wishes to inspect a copy of the MARYSTOWN Municipal Plan Amendment No. 29, 2015 and Development Regulations Amendment No. 38, 2015 may do so at the Marystown Town Office during normal working hours.

TOWN OF MARYSTOWN  
Dennis Kelly, CAO

Aug 14

---

**NOTICE OF REGISTRATION  
TOWN OF MARYSTOWN  
MUNICIPAL PLAN  
AMENDMENT NO. 30, 2015  
AND  
DEVELOPMENT REGULATIONS  
AMENDMENT NO. 39, 2015**

TAKE NOTICE that the TOWN OF MARYSTOWN Municipal Plan Amendment No. 30, 2015 and Development Regulations Amendment No. 39, 2015 as adopted on the 5<sup>th</sup> day of May, 2015 have been approved on the 2<sup>nd</sup> day of June, 2015 and have been registered by the Minister of Municipal and Intergovernmental Affairs.

In general terms the purpose of the Municipal Plan Amendment No. 30 and Development Regulations

Amendment No. 39 is to accommodate commercial development off Columbia Drive by redesignating and rezoning the area from Rural to Commercial and Community Service.

The Municipal Plan Amendment No. 30, 2015 and Development Regulations Amendment No. 39, 2015 come into effect on the day that this notice is published in *The Newfoundland and Labrador Gazette*.

Anyone who wishes to inspect a copy of the MARYSTOWN Municipal Plan Amendment No. 30, 2015 and Development Regulations Amendment No. 39, 2015 may do so at the Marystown Town Office during normal working hours.

TOWN OF MARYSTOWN  
Dennis Kelly, CAO

Aug 14

---

**NOTICE OF REGISTRATION  
TOWN OF PORT BLANDFORD  
MUNICIPAL PLAN AND DEVELOPMENT  
REGULATIONS, 2015**

TAKE NOTICE that the TOWN OF PORT BLANDFORD Municipal Plan Amendment No. 2 and Development Regulations Amendment No. 2, adopted on the 20<sup>th</sup> day of May 2015, have been registered by the Minister of Municipal and Intergovernmental Affairs.

The purpose of these amendments is to redesignate approximately 0.86 hectares at 282-284 Main Street from Residential to Mixed Development to allow for new commercial development.

These amendments come into effect on the day that this notice is published in *The Newfoundland and Labrador Gazette*. Anyone who wishes to inspect a copy of the documents may do so at the Port Blandford Town Office during normal business hours.

TOWN OF PORT BLANDFORD  
Vida Greening, Town Clerk

Aug 14

---

**NOTICE OF REGISTRATION  
TOWN OF ST. LEWIS  
MUNICIPAL PLAN, 2015  
AND  
DEVELOPMENT REGULATIONS, 2015**

TAKE NOTICE that the TOWN OF ST. LEWIS Municipal Plan, 2015 and Development Regulations, 2015 adopted on the 31<sup>st</sup> day of March, 2015, and approved on the 21<sup>st</sup> day of April, 2015, have been registered by the Minister of Municipal and Intergovernmental Affairs.

The St. Lewis Municipal Plan, 2015 and Development Regulations, 2015 come into effect on the day that this notice is published in *The Newfoundland and Labrador*

*Gazette*. Anyone who wishes to inspect a copy of the documents may do so at the St. Lewis Town Office during normal business hours.

TOWN OF ST. LEWIS  
Loraine Poole, Town Clerk

Aug 14

---

**QUIETING OF TITLES ACT**

**2015 01 G2578  
IN THE SUPREME COURT OF  
NEWFOUNDLAND AND LABRADOR  
TRIAL DIVISION (GENERAL)**

IN THE MATTER OF an Application of GERALD CRAWLEY and JOAN CRAWLEY of the Town of Holyrood, in the Province of Newfoundland and Labrador

AND

IN THE MATTER of the *Quieting of Titles Act*, RSNL1990 cQ-3, and amendments thereto

AND

IN THE MATTER OF a piece or parcel of land situate and being at Butter Pot Pond, in the Town of Holyrood, in the Province of Newfoundland and Labrador.

NOTICE OF APPLICATION under the *Quieting of Titles Act*, RSNL1990, cQ-3 and amendments thereto

NOTICE IS HEREBY GIVEN to all parties that GERALD CRAWLEY and JOAN CRAWLEY have applied to the Supreme Court of Newfoundland and Labrador, Trial Division, to have the title to ALL THAT piece or parcel of land situate and being at Butter Pot Pond, Holyrood, in the Province of Newfoundland and Labrador and being more particularly described in the Schedule hereunto attached and marked "A" of which GERALD CRAWLEY and JOAN CRAWLEY claim to be the owners, investigated and they request a declaration that GERALD CRAWLEY and JOAN CRAWLEY are the legal and beneficial owners in possession and the said Court having ordered that Notice of the said Application be published as required by the above named Act.

All persons having title adverse to the said title claimed by GERALD CRAWLEY and JOAN CRAWLEY shall file in the Registry of the Supreme Court of Newfoundland and Labrador particulars of such adverse claim and serve the same together with an Affidavit verifying the same on the undersigned Solicitors for the Applicant on or before the 15<sup>th</sup> day of September, 2015, after which date no party having any claim shall be permitted to file the same or to be heard except by special leave of the Court and subject to such conditions as the Court may deem just.



All such adverse claims shall then be investigated in such manner as the said Supreme Court may direct.

DATED at St. John's, Newfoundland and Labrador, this 3<sup>rd</sup> day of August, 2015.

BENSON BUFFETT, PLC. INC  
Solicitors for the Applicant  
PER: Ken Byrne

ADDRESS FOR SERVICE:  
Suite 900 Atlantic Place  
215 Water Street, P.O. Box 1538  
St. John's, NL A1C 5N8

Tel: (709) 570-7247  
Fax: (709) 579-2647  
Web: bensonbuffett.com

#### **SCHEDULE "A"**

##### **METES AND BOUNDS DESCRIPTION PROPERTY SURVEYED FOR GERALD CRAWLEY BUTTER POT POND - HOLYROOD**

ALL THAT piece or parcel of land situate at Butter Pot Pond, Holyrood in the Electoral District of Harbour Main - Bell Island abutted and bounded as follows; THAT IS TO SAY: Beginning at a point said point being a steel pin set at the intersection formed by the East Limit of the Reserved Public Road (R/W=20.12 metres wide) which runs contiguous with the East Boundary of land described in Crown Grant No. 9190 (Vol. 62 Fol. 133) issued to Cornelius Crawley meeting with the Public Reservation 10 metres wide along the shore line of Butter Pot Pond and being distant one thousand six hundred and seventy six decimal six thirty nine metres on a bearing of South thirty degrees fourteen minutes thirty nine seconds East from Crown Land Monument No. 92453:

THENCE following the limit of the Public Reservation (10 metres wide) along the shore line of Butter Pot Pond to a point distant one hundred and eighty seven decimal twenty three metres on a bearing of North eighty seven degrees twenty eight minutes East;

THENCE following the limit of the Public Reservation (10 metres wide) along the West bank of a brook to a point distant one hundred and seventy three decimal forty nine metres on a bearing of South sixteen degrees four minutes East;

THENCE by Crown land boundary South sixty four degrees thirteen minutes West a distance of one hundred and ninety seven decimal twenty three metres;

THENCE following the East Limit of a woods road (R/W= 10 metres wide) to a point distant one hundred and twenty six decimal eighty seven metres on a bearing of North fifteen degrees seventeen minutes West;

THENCE by land described in Crown Grant No. 9190 (Vol. 62 Fol. 133) issued to Cornelius Crawley South eighty degrees thirty two minutes East a distance of sixty three decimal forty nine metres;

THENCE along the Southern Extremity of a Reserved Public Road (R/W=20.12 metres wide) North forty nine degrees twenty eight minutes East a distance of twenty decimal twelve metres;

THENCE along the East Limit of the aforementioned Reserved Public Road (R/W=20.12 metres wide) North forty degrees thirty two minutes West a distance of one hundred and fifty six decimal eighty eight metres more or less to the point of beginning and containing an area of 4.74 hectares and being more completely described and delineated in red on the drawing hereto annexed.

Reserving nevertheless out of the above described area a Public Road (10 metres wide) crossing the property as shown coloured in green on the annexed plan.

All bearings premise that the bearing from Crown land Monument No. 92453 to Crown land Monument No. 92450 is S34°24'04"W.



**2015 01G 3573**  
**IN THE SUPREME COURT OF**  
**NEWFOUNDLAND AND LABRADOR**  
**TRIAL DIVISION**

IN THE MATTER of the *Quieting of Titles Act*, RSNL 1990 cQ-3;

AND IN THE MATTER of an Application by SHARON ANN FITZPATRICK, as Estate Trustee of the Estate of Gerald O'Neill

AND IN THE MATTER of all those pieces or parcels of land situated in the Town of Harbour Grace, in the Province of Newfoundland and Labrador, Canada.

NOTICE OF APPLICATION under the *Quieting of Titles Act*, RSNL 1990 cQ-3, as amended.

NOTICE IS HEREBY given to all parties that SHARON ANN FITZPATRICK of Bowmanville, in the Province of Ontario, in her capacity as Estate Trustee with a will of the Estate of Gerald O'Neill, has applied to the Supreme Court of Newfoundland and Labrador, Trial Division, in the Judicial Centre of St. John's, to have title investigated to ALL THOSE certain pieces or parcels of land situate, lying and being within the Town of Harbour Grace, in the Province of Newfoundland and Labrador, Canada, and being more particularly described on the Schedule "A" attached hereto, of which the said SHARON ANN FITZPATRICK claims to be owner, investigated and for a declaration that the said Estate of Gerald O'Neill is the absolute owner thereof, free from those exceptions or qualifications contained in Section 22(1)(c) and (d) of the *Quieting of Titles Act*, RSNL 1990 cQ-3. All persons having a claim adverse to this title claimed by the said SHARON ANN FITZPATRICK should file in the Registry of the Supreme Court of Newfoundland and Labrador, Trial Division, St. John's, Newfoundland and Labrador, Canada, A1C 5M3, particulars of such adverse claim and serve the same, together with an Affidavit verifying the same, on the undersigned solicitors for the Applicant on or before the 14<sup>th</sup> day of September, 2015 after which date no party having any claim shall be permitted to file the same except by special leave of the Court subject to such conditions as the Court may deem just.

All such adverse claims shall then be investigated in such manner as the said Supreme Court may direct.

DATED at St. John's, in the Province of Newfoundland and Labrador this 7<sup>th</sup> day of August, 2015.

COX & PALMER  
Solicitors for the Applicant  
PER: William T. Cahill

ADDRESS FOR SERVICE:  
Suite 1000, 235 Water Street  
St. John's, NL A1C 1B6

Tel: (709) 570-5577  
Fax: (709) 726-3156

**SCHEDULE "A"**

**"Parcel A"**  
O'Neill Estate

Road to Lady Pond Harbour Grace, NL

ALL THAT piece or parcel of land situate and being South of Road to Lady Pond (20.12m wide), in the Town of Harbour Grace, in the Province of Newfoundland and Labrador, Canada, bounded and abutted as follows: that is to say beginning at a point, said point having M.T.M. Grid Co-ordinates (C.M. 53°) [NAD 83] of N 5 284 292.718 and E 286 720.132;

THENCE RUNNING South seventeen degrees seventeen minutes fifty seconds East (S17°17'50"E), a distance of 147.858 metres by Crown Land to a point;

THENCE turning and running North seventy nine degrees seventeen minutes fifty seconds West (N79°17'50"W), a distance of 199.559 metres by an Old Path to a point;

THENCE turning and running North seventeen degrees seventeen minutes fifty seconds East (N17°17'50"W), a distance of 94.549 metres by Rogerson's Marsh to a point;

THENCE turning and running North eighty five degrees thirty six minutes thirty five seconds East (N85°36'35"E), a distance of 180.767 metres by the Southern limits of a Road to Lady Pond (20.12m wide) to the PLACE OF BEGINNING and containing in all an area of 2.1356 hectares as more particularly described and delineated on plan T6197A, Nov 10, 2006 hereto annexed.

ALL bearings are referred to Grid North.

**"Parcel B"**  
O'Neill Estate

Peddle Road Harbour Grace, NL

ALL THAT piece or parcel of land situate and being North West of Lady Pond and North and South of Peddle Road, in the Town of Harbour Grace, in the Province of Newfoundland and Labrador, Canada, bounded and abutted as follows: that is to say beginning at a point, said point having M.T.M. Grid Co-ordinates (C.M.53°) [NAD 83] of N 5 284 108.618 and E 285 518.004;

THENCE RUNNING North twenty five degrees fifty five minutes eighteen seconds West (N25°55'18"W), a distance of 447.409 metres by land of John Walker to a point;

THENCE turning and running North thirteen degrees thirteen minutes twenty six seconds West (N13°13'26"W), a distance of 135.472 metres by Crown Land to a point;

THENCE turning and running North sixty five degrees thirty minutes fifty seven seconds East (N65°30'57"E), a distance of 1147.384 metres by Crown land to a point;

THENCE turning and running South eight degrees forty eight minutes forty four seconds East (S08°48'44"E), a distance of 199.169 metres by Crown land to a point;

THENCE turning and running conterminous with a 20m Reservation along the Waters of Lady Pond and having a chord bearing and distance of South forty six degrees

twelve minutes forty five seconds West (S46°12'45"W), a distance of 1174.860 metres to the PLACE OF BEGINNING and containing in all an area of 38.3566 hectares as more particularly described and delineated on plan T6197B, Nov 10, 2006 hereto annexed.

SUBJECT TO a Right of Way for Peddle Road being 20m wide extending through the parcel as shown on the plan hereto annexed.

ALL bearings are referred to Grid North.

**"Parcel C"**

O'Neill Estate

Conception Bay North Bypass Harbour Grace, NL

ALL THAT piece or parcel of land situate and being South East of the Conception Bay North Bypass, in the Town of Harbour Grace, in the Province of Newfoundland and Labrador, Canada, bounded and abutted as follows: that is to say beginning at a point, said point having M.T.M. Grid Co-ordinates (C.M.53°) [NAD 83] of N 5 284 999.458 and E 288 021.737;

THENCE RUNNING along a curve to the left having a radius of 454.000 metres, an arc of 163.000 metres and a chord of North three degrees forty three minutes nine seconds West (N03°43'10"W) a distance of 162.126 metres by the South Eastern limits of the Conception Bay North Bypass [90m wide] to a point;

THENCE turning and running North twelve degrees thirty three minutes twenty one seconds West (N12°33'21"W), a distance of 7.699 metres by the South Eastern limits of the Conception Bay North Bypass [90m wide] to a point;

THENCE turning and running South thirty four degrees thirty six minutes nine seconds East (S34°36'09"E), a distance of 82.433 metres by land of Edward Whalen to a point;

THENCE turning and running North sixty seven degrees forty five minutes forty one seconds East (N67°45'41"E), a distance of 25.356 metres by land of Edward Whalen to a point;

THENCE turning and running South twenty nine degrees fifty one minutes thirty nine seconds East (S29°51'39"E), a distance of 359.580 metres by land now or formerly the estate of John Farrell to a point;

THENCE turning and running South forty eight degrees eight minutes twenty one seconds West (S48°08'21"W), a distance of 108.027 metres by the Northern Western limits of Kildare Road (20m wide) to a point;

THENCE turning and running North twenty nine degrees fifty one minutes thirty nine seconds West (N29°51'39"W), a distance of 314.662 metres by land of Jas. Farrell to the PLACE OF BEGINNING and containing in all an area of 3.9310 hectares as more particularly described and delineated on plan T6197C, Nov 10, 2006 hereto annexed.

ALL bearings are referred to Grid North.

**"Parcel D"**

O'Neill Estate

Incinerator Road Harbour Grace, NL

ALL THAT piece or parcel of land situate and being South East of Incinerator Road, in the Town of Harbour Grace, in the Province of Newfoundland and Labrador, Canada, bounded and abutted as follows: that is to say beginning at a point, said point having M.T.M. Grid Co-ordinates (C.M. 53°) [NAD 83] of N 5 285 548.482 and E 287 706.694;

THENCE RUNNING along a curve to the right having a radius of 131.763 metres, an arc of 34.889 metres and a chord of North forty degrees thirty six minutes thirty three seconds East (N40°36'33"E) a distance of 34.787 metres by the South Eastern Limits of Incinerator Road [20m wide] to a point;

THENCE turning and running South thirty four degrees thirty six minutes twelve seconds East (S34°36'12"E), a distance of 120.296 metres by land of the Government of Newfoundland and Labrador to a point;

THENCE turning and running along a curve to the left having a radius of 2166.071 metres, an arc of 19.696 metres and a chord of South twenty degrees forty six minutes five seconds East (S20°46'05"E) a distance of 19.696 metres by the South Western Limits of the Conception Bay North Bypass [90m wide] to a point;

THENCE turning and running South twenty one degrees one minutes twenty seven seconds East (S21°01'27"E), a distance of 258.271 metres by the South Western Limits of the Conception Bay North Bypass [90m wide] to a point;

THENCE turning and running North twenty nine degrees fifty one minutes nine seconds West (N29°51'09"W), a distance of 382.910 metres by land now or formerly the estate of James R. Knight to the PLACE OF BEGINNING and containing in all an area of 1.0222 hectares as more particularly described and delineated on plan T6197D, Nov 10, 2006 hereto annexed.

ALL bearings are referred to Grid North.

**"Parcel E"**

O'Neill Estate

Incinerator Road, Harbour Grace, NL

ALL THAT piece or parcel of land situate and being North West of Incinerator Road, in the Town of Harbour Grace, in the Province of Newfoundland and Labrador, Canada, bounded and abutted as follows: that is to say beginning at a point, said point having M.T.M. Grid Co-ordinates (C.M. 53°) [NAD 83] of N 5 285 567.646 and E 287 695.696;

THENCE RUNNING North twenty nine degrees fifty one minutes nine seconds West (N29°51'09"W), a distance of 31.061 metres by Crown land to a point;

THENCE turning and running North forty eight degrees seven minutes twenty two seconds East (N48°07'22"E), a distance of 81.670 metres by Crown land to a point;

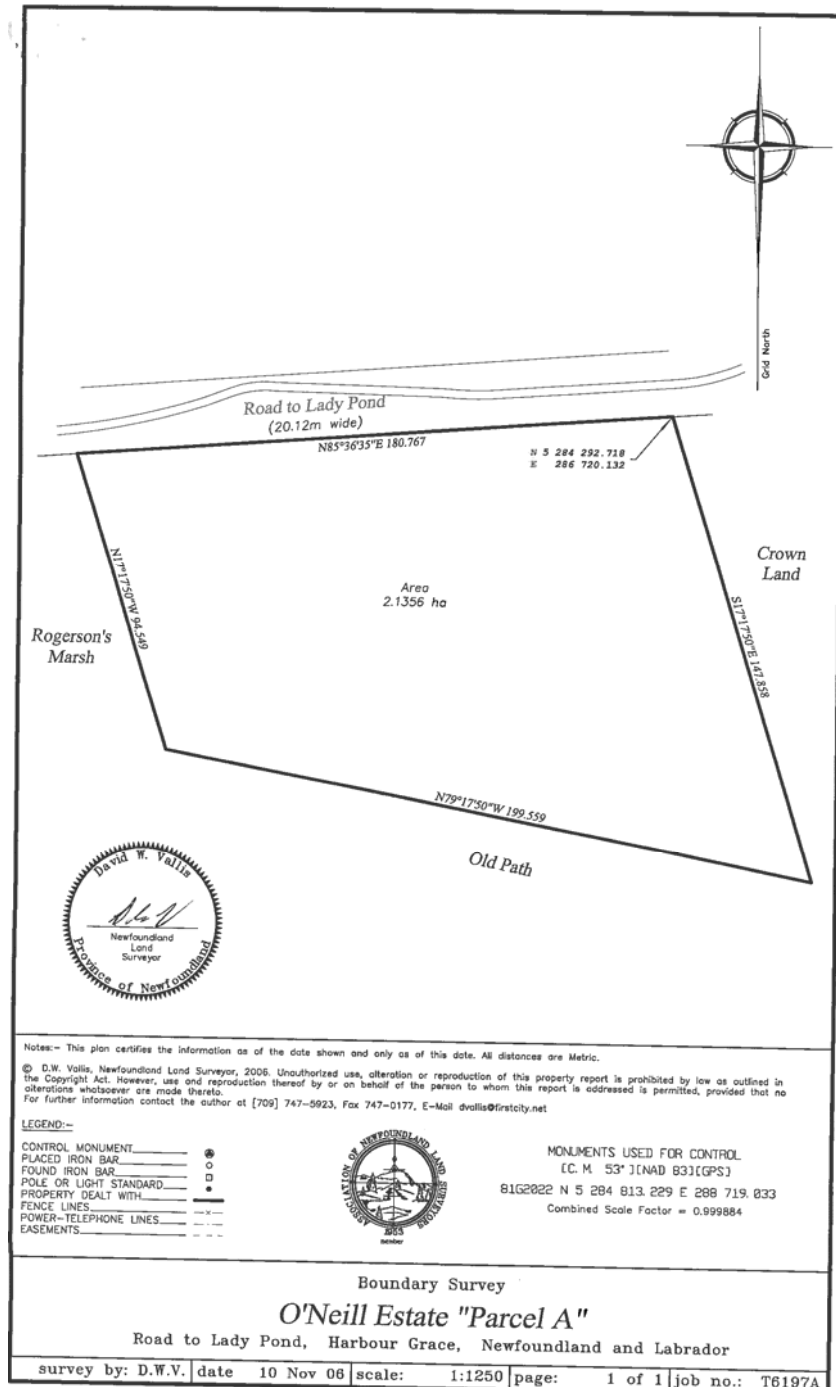
THENCE turning and running along a curve to the left having a radius of 2166.071 metres, an arc of 37.135 metres and a chord of South sixteen degrees ten minutes thirty six seconds East (S16°10'36"E) a distance of 37.134 metres by the Western Limits of the Conception Bay North Bypass [90m wide] to a point;

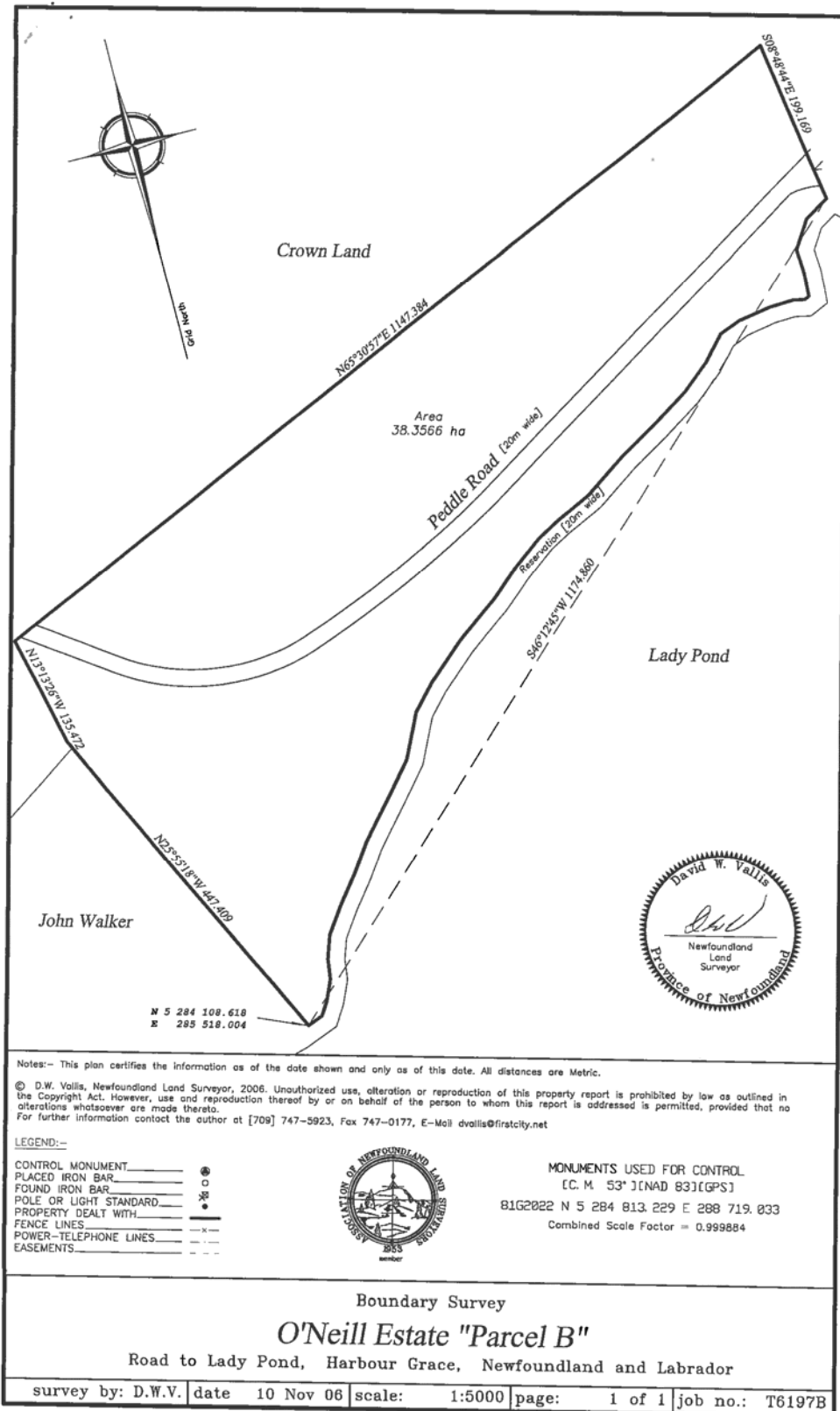
THENCE turning and running along a curve to the left having a radius of 151.763 metres, an arc of 72.799 metres and a chord of South fifty degrees thirty four minutes eighteen seconds West (S50°34'18"W) a distance of 72.103

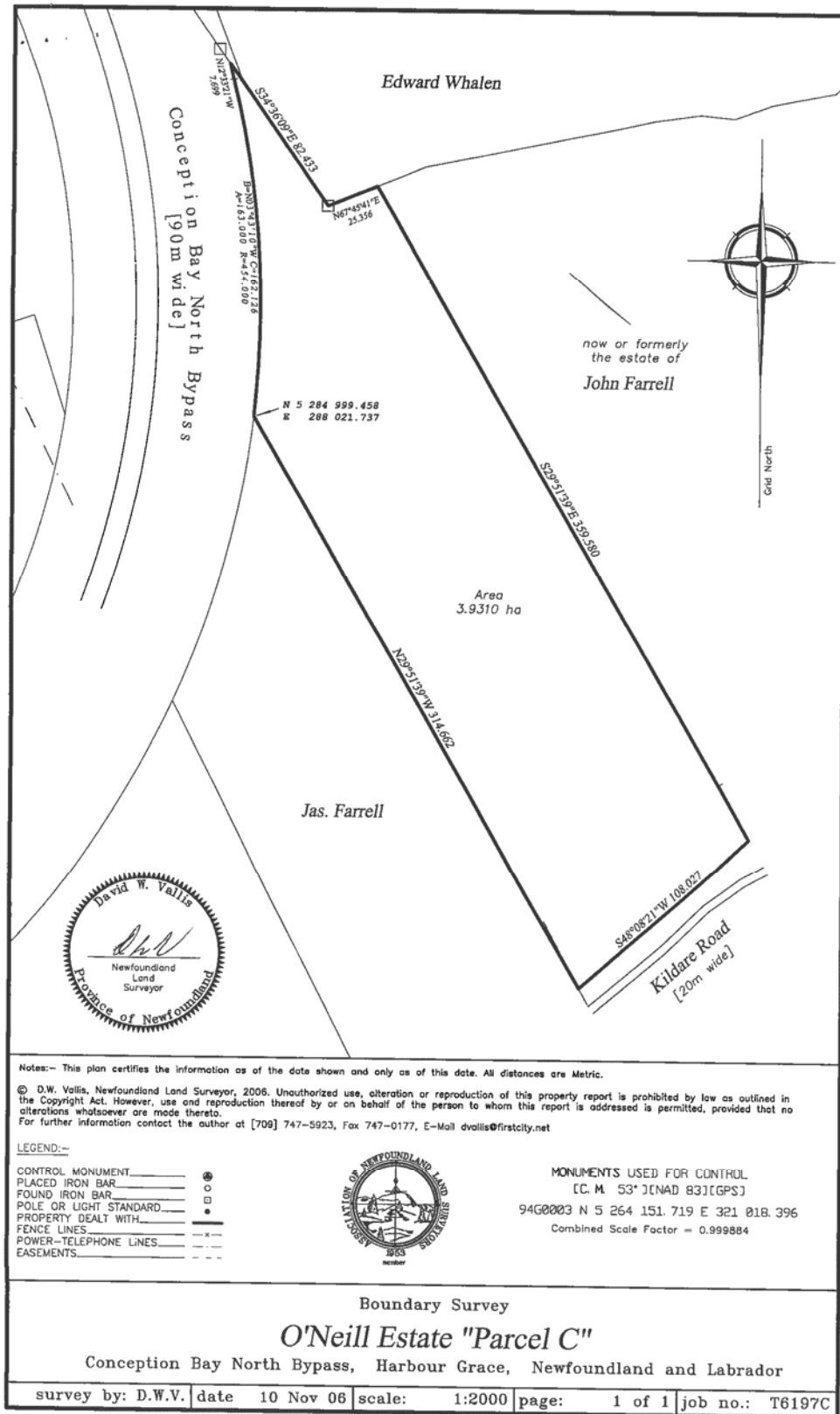
metres by the North Western Limits of Incinerator Road [20m wide] to the PLACE OF BEGINNING and containing in all an area of 0.2259 hectares as more particularly described and delineated on plan T6197D, Nov 10, 2006 hereto annexed.

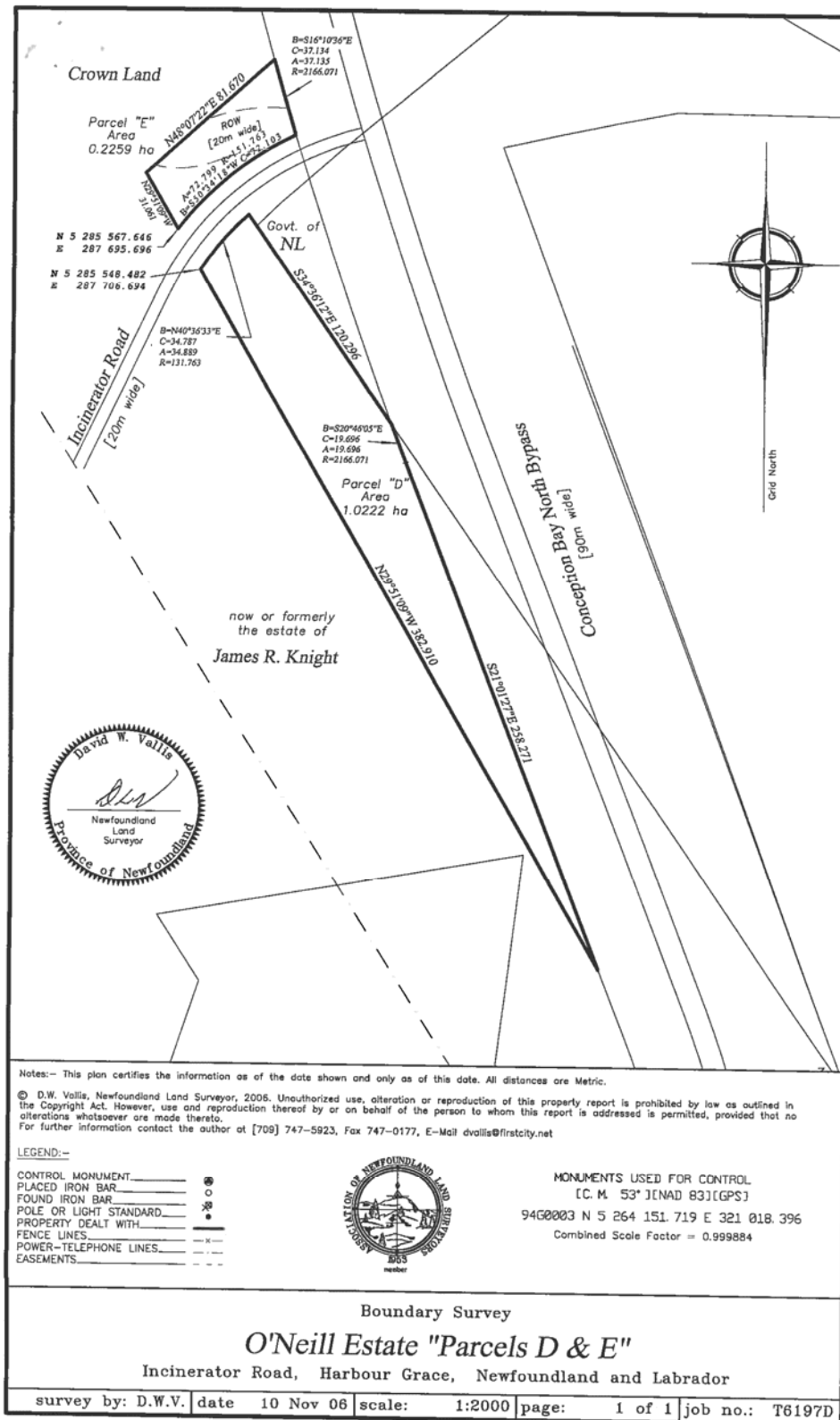
RESERVING THEREFROM a row being 20m wide extending through the parcel as shown.

ALL bearings are referred to Grid North.











**TRUSTEE ACT**

**ESTATE NOTICE**

IN THE MATTER OF the Estate and Effects of RENDELL WALLACE BECK, Late of Swift Current, in the Province of Newfoundland and Labrador, Retired Welder, deceased.

All persons claiming to be creditors of or who have any claim or demands upon or affecting the Estate of RENDELL WALLACE BECK, Late of Swift Current, aforesaid, deceased, are hereby requested to send particulars of the same in writing, duly attested, to the undersigned Solicitors for the Administrator of the Estate on or before the 8<sup>th</sup> day of September, 2015, after which date the Administrator will proceed to distribute the said Estate having regard only to the claims of which he shall then have had notice.

DATED at Clarenville, in the Province of Newfoundland and Labrador, this 7<sup>th</sup> day of August, 2015.

HUGHES AND BRANNAN  
Solicitors for the Administrator  
For the Estate of  
RENDELL WALLACE BECK

ADDRESS FOR SERVICE:  
357 Memorial Drive  
Clarenville, NL A5A 1R8

Tel: (709) 466-3106  
Fax: (709) 466-3107

Aug 14

---

**ESTATE NOTICE**

IN THE MATTER of the Estate of JOHN VINCENT, Late of Newtown, in the Province of Newfoundland and Labrador, Deceased.

All persons claiming to be creditors of or who have any claims or demands either as beneficiaries or next of kin (by blood, legal adoption or marriage) upon or affecting the Estate of JOHN VINCENT, Gentleman, who died at Newtown, NL on or about June 24, 1921, or any beneficiaries of the Estates of Selena Vincent, wife of the Late JOHN VINCENT or Matt Vincent, Son of the Late John Vincent, or Ed Vincent, son of the Late JOHN VINCENT, are hereby requested to send particulars thereof in writing, duly attested, to the Office of the Public Trustee, 401 - 136 Crosbie Road, St. John's, NL, A1B 3K3, Administrator of the Estate of JOHN VINCENT, on or before September 15, 2015, after which date the said Administrator will proceed to distribute the Estate having regard only to the claims of which he then shall have had notice.

DATED at St. John's, this 14<sup>th</sup> day of August, 2015.

OFFICE OF THE PUBLIC TRUSTEE  
Administrator of the Estate of  
JOHN VINCENT

ADDRESS FOR SERVICE:

Viking Building  
401 - 136 Crosbie Road  
St. John's, NL A1B 3K3

Tel: (709) 729-1025  
Fax: (709) 729-3063

Aug 14

---





# THE NEWFOUNDLAND AND LABRADOR GAZETTE

## PART II

### SUBORDINATE LEGISLATION FILED UNDER THE STATUTES AND SUBORDINATE LEGISLATION ACT

Vol. 90

ST. JOHN'S, FRIDAY, AUGUST 14, 2015

No. 33

## Index

### PART I

Change of Name Act, 2009 – Notice .....	295
Quieting of Titles Act – Notices .....	298
Trustee Act – Notices .....	307
Urban and Rural Planning Act, 2000 – Notices .....	297
Winding-Up and Restructuring Act – Notices .....	291

### PART II

#### CONTINUING INDEX OF SUBORDINATE LEGISLATION

Title of Act and Subordinate Legislation made thereunder	CNLR or NL Reg.	Amendment	NL Gazette Date & Page No.
--	--------------------	-----------	-------------------------------

**No Subordinate Legislation  
Received at Time of Printing**

*The Newfoundland and Labrador Gazette* is published from the Office of the Queen's Printer.

Copy for publication must be received by **Friday, 4:30 p.m.**, seven days before publication date to ensure inclusion in next issue.

Advertisements must be submitted in either PDF format or as a MSWord file. When this is not possible, advertisements must be either typewritten or printed legibly, separate from covering letter. Number of insertions required must be stated and the names of all signing officers typewritten or printed.

Copy may be mailed to the address below, faxed to (709) 729-1900 or emailed to [queensprinter@gov.nl.ca](mailto:queensprinter@gov.nl.ca).

Subscription rate for *The Newfoundland and Labrador Gazette* is \$137.50 for 52 weeks plus 5% tax (\$144.38). Weekly issues, \$3.30 per copy, plus 5% tax (\$3.47) payable in advance.

All cheques, money orders, etc., should be made payable to THE NEWFOUNDLAND EXCHEQUER ACCOUNT and all correspondence should be addressed to: Office of the Queen's Printer, P. O. Box 8700, Ground Floor, East Block, Confederation Building, St. John's, NL A1B 4J6. Telephone (709) 729-3649. Fax: (709) 729-1900.

**Web Site:** <http://www.servicenl.gov.nl.ca/printer/index.html>

*The Newfoundland and Labrador Gazette*

Advertising Rates

Prices effective May 1, 2015

Notices	Rate	13% HST	Total
Lands Act - Notice of Intent - 1 week	\$29.65	\$3.85	\$33.50
Motor Carrier Act - Notice - 1 week	\$38.00	\$4.94	\$42.94
Trustee Act - Estate Notice - 1 week	\$33.00	\$4.29	\$37.29
Trustee Act - Estate Notice - 2 weeks	\$59.40	\$7.72	\$67.12
Trustee Act - Estate Notice - 3 weeks	\$86.90	\$11.30	\$98.20
Trustee Act - Estate Notice - 4 weeks	\$113.30	\$14.73	\$128.03

All other public notices required by law to be published in *The Newfoundland and Labrador Gazette*, eg., Corporations Act, Municipalities Act, Quieting of Titles Act, Urban and Rural Planning Act, etc., are priced according to size: for Single Column \$3.30 per cm or Double Column \$6.60 per cm, plus 13% HST.

For quotes please contact the Office of the Queen's Printer [queensprinter@gov.nl.ca](mailto:queensprinter@gov.nl.ca)

**Government Information Product**

**Publication Rate Mail**

**G.S.T. # R107442683**