



THE NEWFOUNDLAND AND LABRADOR GAZETTE

PART I
PUBLISHED BY AUTHORITY

Vol. 92

ST. JOHN'S, FRIDAY, NOVEMBER 17, 2017

No. 46

CORPORATIONS ACT

NOTICE

Corporations Act - Section 393
Local Incorporations
For the Month of: July 2017

			2017-07-05	79808	79808 NEWFOUNDLAND & LABRADOR INC.
			2017-07-05	79809	Ryan Manuel Construction Limited
			2017-07-05	79810	79810 NEWFOUNDLAND & LABRADOR INC.
			2017-07-05	79811	Atlantic Asphalt Inc.
			2017-07-06	79828	79828 NEWFOUNDLAND AND LABRADOR INC.
			2017-07-06	79830	79830 NEWFOUNDLAND AND LABRADOR INC.
			2017-07-06	79826	Jackson's Castle Building Supplies Ltd.
			2017-07-06	79829	SILVER GREY HOLDINGS INC.
			2017-07-06	79827	Sunshine 50 Plus Club Inc.
			2017-07-06	79822	79822 NEWFOUNDLAND & LABRADOR CORP.
			2017-07-07	79838	MKH Construction LTD.
			2017-07-07	79837	WWRP Construction Employers' Association Inc.
			2017-07-07	79834	79834 NEWFOUNDLAND & LABRADOR LIMITED
			2017-07-11	79842	79842 NEWFOUNDLAND & LABRADOR LTD.
			2017-07-11	79845	79845 NEWFOUNDLAND & LABRADOR LTD.
			2017-07-11	79850	E R Heating and Refrigeration (2017) Limited
			2017-07-11	79852	NEW HORIZONS RANDOM CITIZENS 50+ CLUB INC.
Date	Number	Company Name			
2017-07-01	79798	Patrick Kean Optometry Corporation Inc.	2017-07-06	79830	79830 NEWFOUNDLAND AND LABRADOR INC.
2017-07-04	79806	Exploits Soccer Association Inc.	2017-07-06	79826	Jackson's Castle Building Supplies Ltd.
2017-07-04	79803	Newfoundland Hyperloop Student Group Inc.	2017-07-06	79829	SILVER GREY HOLDINGS INC.
2017-07-04	79791	ABBOTT'S ANCHOR INC.	2017-07-06	79827	Sunshine 50 Plus Club Inc.
2017-07-04	79794	Modern Cool Heating Ltd.	2017-07-06	79822	79822 NEWFOUNDLAND & LABRADOR CORP.
2017-07-04	79799	Staff Lot Inc.			
2017-07-04	79800	EasyGro Systems Corp.	2017-07-07	79838	MKH Construction LTD.
2017-07-05	79813	79813 NEWFOUNDLAND AND LABRADOR LIMITED	2017-07-07	79837	WWRP Construction Employers' Association Inc.
2017-07-05	79812	DK Electrical Solutions Inc.	2017-07-07	79834	79834 NEWFOUNDLAND & LABRADOR LIMITED
2017-07-05	79824	Dr. Ahmed Geumei Professional Medical Corporation	2017-07-11	79842	79842 NEWFOUNDLAND & LABRADOR LTD.
2017-07-05	79820	IMAKPIK FISHERIES INC.			
2017-07-05	79819	LINE 2 LINE ELECTRIC LIMITED	2017-07-11	79845	79845 NEWFOUNDLAND & LABRADOR LTD.
2017-07-05	79825	PGBC HOLDINGS LIMITED	2017-07-11	79850	E R Heating and Refrigeration (2017) Limited
2017-07-05	79801	79801 NEWFOUNDLAND & LABRADOR CORP.	2017-07-11	79852	NEW HORIZONS RANDOM CITIZENS 50+ CLUB INC.
2017-07-05	79802	Stapleton's Automotive Limited			
2017-07-05	79807	Raj Restaurants Inc.			

THE NEWFOUNDLAND AND LABRADOR GAZETTE

November 17, 2017

2017-07-11	79849	NEWFOUNDLAND FIRE AND WATER RESTORATION LTD.	2017-07-21	79905	Comfort Sole Foot Care Nursing Services Inc.
2017-07-11	79846	The Nail Garden-Nails and Esthetics Boutique Corp.	2017-07-21	79908	Comfort Cottages LTD.
2017-07-11	79835	Rapid Housing Initiative Inc.	2017-07-21	79909	79909 NEWFOUNDLAND AND LABRADOR INC.
2017-07-11	79836	Hurontec Consulting Ltd.	2017-07-21	79910	79910 NEWFOUNDLAND AND LABRADOR INC.
2017-07-11	79843	Seedlings AAS Corp.	2017-07-21	79911	79911 NEWFOUNDLAND AND LABRADOR INC.
2017-07-11	79844	Mainland Parents for Play Inc.	2017-07-21	79912	79912 NEWFOUNDLAND AND LABRADOR INC.
2017-07-12	79857	Affordable Fashion Inc.	2017-07-21	79913	Gavin Anstey Construction Ltd.
2017-07-12	79858	H2O Foundation Inc.	2017-07-21	79914	79914 NEWFOUNDLAND AND LABRADOR INC.
2017-07-13	79864	Graceville Books and Christian Resources Inc.	2017-07-21	79915	Jesdon Holdings Inc.
2017-07-13	79862	Sincerely Yours Housing Inc.	2017-07-21	79916	Briarside Affair Limited
2017-07-13	79865	The Grass Hut Organics Inc.	2017-07-21	79927	Council of Construction Trades Inc.
2017-07-13	79867	VSJ HOLDINGS LIMITED	2017-07-24	79926	Deepak Arora Orthodontist NL Inc.
2017-07-13	79863	Walking to Wellness, Inc.	2017-07-24	79929	Hawkins Beverages Inc.
2017-07-13	79855	Asi Property Management Corp.	2017-07-24	79928	Purfect Purrs Cat Rescue Inc.
2017-07-13	79856	SS Lit Holdings Inc.	2017-07-24	79924	S.O.S. Roofing & Repairs Ltd.
2017-07-13	79859	Radicle Roots St. John's Inc.	2017-07-24	79925	VAILES FIBERGLASS INC.
2017-07-13	79860	J Wells Business Systems Limited	2017-07-24	79919	Jor-Am Holdings Inc.
2017-07-13	79861	WOODMAN INVESTMENTS LIMITED	2017-07-24	79922	Menchions Consulting Inc.
2017-07-14	79872	Avalon Foot Care Inc.	2017-07-24	79923	Code NL Inc.
2017-07-14	79871	PLAY! studio & boutique Inc.	2017-07-25	79934	DKR Fishing Enterprises Inc.
2017-07-14	79874	Zealous Heating & Cooling Inc.	2017-07-25	79930	Capital Springs Inc.
2017-07-17	79877	Practical Contracting Limited	2017-07-25	79931	Burnt Cove Boat Launch Corp.
2017-07-17	79878	79878 NEWFOUNDLAND & LABRADOR INC.	2017-07-25	79932	Foggy Island Contracting Ltd.
2017-07-17	79879	SMART LIFE INCORPORATED	2017-07-25	79933	79933 NEWFOUNDLAND & LABRADOR INC.
2017-07-19	79894	ABC Plumbing & Heating Ltd	2017-07-26	79940	CC Iceberg Adventure Inc.
2017-07-19	79884	City Of Mount Pearl-Social Club Corporation	2017-07-26	79944	Frederickton Local Improvement Committee Inc.
2017-07-19	79883	Pixie Dust Cleaning Services Inc.	2017-07-26	79945	Premier Auto Appraisals Ltd.
2017-07-19	79886	Leadership Matters Inc.	2017-07-26	79935	Techno Metal Post Avalon Inc.
2017-07-19	79887	79887 NEWFOUNDLAND & LABRADOR LTD.	2017-07-26	79937	Western Hockey Group 2017 Inc.
2017-07-19	79888	TV fish Inc.	2017-07-26	79938	Avalon Osteopathy Corp.
2017-07-19	79889	79889 NEWFOUNDLAND & LABRADOR CORP.	2017-07-27	79954	Brennan Projects Inc.
2017-07-19	79891	Harvey's Holdings LTD.	2017-07-27	79947	Keith Abbott CPA Professional Corporation
2017-07-19	79892	RAZR Holdings Inc.	2017-07-27	79952	Safe Pasture Properties Inc.
2017-07-19	79893	C&N Professional Pharmacy Services Inc.	2017-07-28	79953	The Nacho Shoppe Foods Ltd.
2017-07-20	79897	Witless Bay Coffee Inc.	2017-07-28	79957	Lawlor's Awards Ltd.
2017-07-20	79898	H&M Global Inc.	2017-07-28	79955	Rough Waters Brewing Company Ltd.
2017-07-20	79899	79899 NEWFOUNDLAND & LABRADOR CORP.	2017-07-30	79956	79956 NEWFOUNDLAND & LABRADOR LIMITED
2017-07-20	79900	HCP INVESTMENTS INC.	2017-07-31	79965	Burin Living Inc.
2017-07-20	79901	Fifth Hammer Books, Inc.	2017-07-31	79964	Kingsway Living Inc.
2017-07-20	79902	79902 NEWFOUNDLAND AND LABRADOR INC.	2017-07-31	79963	79963 NEWFOUNDLAND & LABRADOR INC.
2017-07-20	79903	79903 NEWFOUNDLAND & LABRADOR INC.	Total Incorporations: 115		
2017-07-21	79904	Avalon Arts Inc.			

THE NEWFOUNDLAND AND LABRADOR GAZETTE

November 17, 2017

Corporations Act - Section 331

Local Revivals

For the Month of: July 2017

Date	Number	Company Name
2017-07-13	48086	Notch Mountain Holdings Inc.

Total Revivals: 1

Corporations Act - Section 296 and 393

Local Continuances

For the Month of: July 2017

Date	Number	Company Name
2017-07-05	79814	CURTIS CONSULTING LTD.
2017-07-05	79818	Dr. Dale A. Skanes Physician PMC Inc.
2017-07-26	79942	79942 NEWFOUNDLAND AND LABRADOR INC.
2017-07-26	79943	79943 NEWFOUNDLAND AND LABRADOR INC.

Total Continuances: 4

Corporations Act - Section 286

Local Amendments

For the Month of: July 2017

Date	Number	Company Name
2017-07-04	64067	Atlantic Automotive & Industrial Ltd.
2017-07-04	79505	NL Chinese Restaurant Association Inc.
2017-07-05	76839	76839 NEWFOUNDLAND AND LABRADOR CORP.
2017-07-05	69922	GREAT NORTH DATA LTD.
2017-07-05	28580	MOBILEWORDS LIMITED
2017-07-05	66982	RADIANT360 SOLUTIONS INC.
2017-07-05	77694	Stable Life Inc.
2017-07-05	62265	TASK INVESTMENTS LIMITED
2017-07-05	70909	VIRGIN MARY AND SAINT VERENA COPTIC ORTHODOX CHURCH INC.
2017-07-06	66599	65693 NEWFOUNDLAND AND LABRADOR LTD.
2017-07-06	79765	79765 NEWFOUNDLAND & LABRADOR LTD.
2017-07-06	79818	Dr. Dale A. Skanes Physician PMC Inc.
2017-07-06	78296	Great Northern Port Inc.
2017-07-07	75785	CANIS MAJOR INC
2017-07-07	78772	CoLab Software Inc.
2017-07-07	59027	Gold Seal Roofing Inc.
2017-07-07	44258	Hickey's Poultry Inc.
2017-07-11	74260	Killick Hospice Care Inc.
2017-07-12	42672	Glamox Inc.
2017-07-13	70452	BADGER BAY MUSSEL FARMS LTD.
2017-07-13	79793	Budgell's Sports & Marine Limited

2017-07-13	71681	MAJCOR ENERGY INC.
2017-07-13	79795	Merasheen Oyster Farms Inc.
2017-07-13	65548	NOTRE DAME BAY MUSSEL FARMS INC.
2017-07-14	74623	74623 NEWFOUNDLAND & LABRADOR INC.
2017-07-14	52187	CROSBIE GROUP LIMITED
2017-07-17	46290	11140 Newfoundland Inc.
2017-07-17	46124	Glenwood Recreation Committee Inc.
2017-07-17	77320	Light Keepers Cafe Limited
2017-07-18	71283	71283 NEWFOUNDLAND AND LABRADOR LIMITED
2017-07-18	41856	East Point Fisheries Limited
2017-07-18	79663	Krimar Homes Limited
2017-07-18	73457	Seafoam Fisheries Ltd.
2017-07-18	40132	SHARRON'S SALES & SERVICE LTD.
2017-07-18	60856	THE BAY OF ISLANDS SOCIETY FOR THE PREVENTION OF CRUELTY TO ANIMALS CORP.
2017-07-19	75499	CBCC Holdings Inc.
2017-07-19	75625	Strong Harbour Strings Program Incorporated
2017-07-20	49422	Discount Auto Plaza Ltd
2017-07-20	65767	Engravable Designs Inc.
2017-07-20	44735	Snelgrove's Limited
2017-07-21	73358	73358 NEWFOUNDLAND & LABRADOR LIMITED
2017-07-21	75261	Fisher Seaward Building Company Ltd.
2017-07-21	76675	Frozen In Time Ltd.
2017-07-24	77221	Big Land Pasta Inc.
2017-07-25	55628	SKIPPER HOLDINGS LIMITED
2017-07-26	46069	HYTEC BUILDERS INC.
2017-07-26	42775	NEW WES VALLEY RECREATION COMMISSION INC.
2017-07-26	24953	Newfoundland and Labrador Rugby Union, Inc.
2017-07-26	75131	Qalipu Safety & Industrial Supplies Limited
2017-07-28	79532	Relationship Family Law PLC. Inc.
2017-07-28	44044	Violence Prevention - Avalon East Inc.

Total Amendments: 51

Corporations Act - Section 335

Local Dissolutions

For the Month of: July 2017

Date	Number	Company Name
2017-07-04	16706	M. & M. Construction Limited
2017-07-04	24851	Tam's Incorporated
2017-07-06	64912	DOMINO RUN ENTERPRISE LIMITED
2017-07-07	48093	CONTINENTAL LOANS & LEASING LIMITED
2017-07-07	45031	LOBEL INVESTMENTS INC.

THE NEWFOUNDLAND AND LABRADOR GAZETTE
November 17, 2017

2017-07-07	39025	MOUNTAIN HOLDINGS LIMITED	2017-07-01	79792	DZ Marshall Enterprises Inc.
2017-07-11	49554	11463 Newfoundland & Labrador Inc.	From:	35655	ATLANTEX IMAGED WEAR LTD.
2017-07-11	13080	EAGLE HOLDINGS LIMITED		69472	DZ Marshall Enterprises Inc.
2017-07-11	66155	ROBANNA HOLDINGS INC.	2017-07-01	79795	Merasheen Oyster Farms Inc.
2017-07-12	69186	BAYVIEW SALES AND SERVICES LIMITED	From:	41559	MERASHEEN MUSSEL FARMS INC
2017-07-12	72325	KAMI RAILWAY COMPANY LIMITED		67280	MERASHEEN OYSTER FARMS INC.
2017-07-12	70110	Moulton's Self Storage Inc.	2017-07-14	79870	Apex Construction
2017-07-12	60638	RAILS TO TRAILS INC.			Specialties Inc.
2017-07-14	36025	Brianna's Holdings Inc.	From:	21512	APEX Construction
2017-07-14	51007	BRK MASONRY LTD.			Specialties Inc.
2017-07-19	58298	58298 NEWFOUNDLAND & LABRADOR LTD.		40951	Dell Holdings Limited
2017-07-20	63682	E.E.M. ELECTRICAL INC	2017-07-19	79895	BACCALIEU RETIREMENT LIVING INC.
2017-07-21	73464	Juniper Clothing Inc.			
2017-07-21	67243	MAINLINE CONTRACTING INC.	From:	79596	Baccalieu Retirement Living Inc.
2017-07-21	42556	QTI INVESTMENTS LIMITED		79289	Lane Group of Companies Inc.
2017-07-26	55974	MONTY'S MOVIES INC.	2017-07-28	79949	66813 Newfoundland and Labrador Inc.
2017-07-28	29066	HIBERNIA MARINE SERVICES LIMITED	From:	66813	66813 NEWFOUNDLAND AND LABRADOR INC.
2017-07-31	15728	15728 NEWFOUNDLAND AND LABRADOR LIMITED		79828	79828 NEWFOUNDLAND AND LABRADOR INC.
2017-07-31	26151	26151 NEWFOUNDLAND AND LABRADOR LIMITED			
2017-07-31	69814	C.D.R.Electric Ltd.	Total Amalgamations: 7		
2017-07-31	71690	CABCO COMMUNICATION SOLUTIONS INC.			
2017-07-31	27260	ST. PAUL'S POND INVESTMENTS LIMITED			

Total Dissolutions: 27

Corporations Act - Section 294
Local Amalgamations
For the Month of: July 2017

Date	Number	Company Name	Number		Company Name
2017-07-01	79785	ANW CONSTRUCTION LIMITED	77694		Stable Life Inc.
From:	60486	60486 NEWFOUNDLAND & LABRADOR INC.	2017-07-05	From:	Hope Arena Development Alliance Incorporated
	67915	ANW CONSTRUCTION LIMITED	78296		
2017-07-01	79793	Budgell's Sports & Marine Limited	2017-07-06	From:	Great Northern Port Inc.
From:	25731	BUDGELL'S SPORTS & MARINE LIMITED			78296 NEWFOUNDLAND & LABRADOR INC.
	41333	D.M. WINSOR HOLDINGS LIMITED	59027		
	54666	J.S.V. HOLDINGS LIMITED	2017-07-07	From:	Gold Seal Roofing Inc.
					TEAM JOHNSON BUILDING & DEVELOPMENT INC
			42672		
			2017-07-12	From:	Glamox Inc.
					GLAMOX CANADA INC.
			71283		
			2017-07-18	From:	71283 NEWFOUNDLAND AND LABRADOR LIMITED
					DR. FARRUKH JAVED PROFESSIONAL MEDICAL CORPORATION

THE NEWFOUNDLAND AND LABRADOR GAZETTE

November 17, 2017

79532		Relationship Family Law PLC. Inc.	2017-07-19	79896	EPIROC CANADA INC.
2017-07-28	From:	Relationship Family Law PLC. Inc.	2017-07-20	79906	ADVOCARE HEALTH & WELLNESS CANADA LTD.
44044		Violence Prevention - Avalon East Inc.	2017-07-21	79920	BridgePoint Financial Services Inc.
2017-07-28	From:	COALITION AGAINST VIOLENCE (AVALON EAST, NEWFOUNDLAND AND LABRADOR), INC.	2017-07-24	79921	ARC Ent Ltd.
			2017-07-25	79936	ALBA POWER LIMITED
			2017-07-26	79939	SJ HYNES HOLDINGS INC.
			2017-07-26	79946	Windshield Doctor Canada 2 Ltd.
			2017-07-27	79951	PORT ROYAL GROUP INCORPORATED
Total Name Changes: 7			2017-07-28	79960	Blumara Corp.
<i>Corporations Act - Section 443</i>			2017-07-28	79958	C.S.T. Spark Inc.
Extra-Provincial Registrations			2017-07-28	79961	PRINCIPIS CAPITAL LLC
For the Month of: July 2017			2017-07-31	79962	Renews Cappahayden Church Property Preservation
Date	Number	Company Name	2017-07-31	79966	TRC CONSULTING NORTH AMERICA INC.
2017-07-04	79804	Superior Millwright Inc.			
2017-07-05	79815	FREEMARK APPAREL BRANDS RETAIL BE INC. MARQUES DE VÊTEMENTS FREEMARK AU DÉTAIL BE INC.			
2017-07-05	79821	TACTEX ASSET MANAGEMENT INC. TACTEX GESTION D'ACTIFS INC.			
2017-07-06	79833	DOREY'S LEDGE FISHERIES LIMITED			
2017-07-06	79831	Pentecostal Securities Corp.			
2017-07-07	79841	Canam Bâtiments et Structures inc. Canam Buildings and Structures Inc.			
2017-07-07	79839	Canam Ponds Canada inc. Canam Bridges Canada Inc.			
2017-07-07	79840	SANTRA LTD.			
2017-07-07	79869	SINCLAIR FINANCIAL LIMITED			
2017-07-11	79848	DMT Development Systems Canada Inc.			
2017-07-11	79851	GEMSTAR HOLDINGS LTD.			
2017-07-11	79847	MARITECH INTERNATIONAL LTD.			
2017-07-13	79866	BIRD CONSTRUCTION INC.			
2017-07-13	79868	World Vision Canada - Vision Mondiale Canada			
2017-07-14	79873	DENNIS LEVER & ASSOC. INC.			
2017-07-14	79875	EXEL FREIGHT CONNECT INC.			
2017-07-14	79876	INTERAC AMERICA CO., LTD.			
2017-07-14	79882	ROUGHLEY INSURANCE BROKERS LTD.			
2017-07-17	79890	NEW HORIZONS STAFFING INC.			
2017-07-19	79907	COMPACT POWER EQUIPMENT, INC.			
			Total Registrations: 33		
			<i>Corporations Act - Section 451</i>		
			Extra-Provincial Name Changes		
			For the Month of: July 2017		
	Number	Company Name			
	76761	CORE PRODUCTS INTERNATIONAL, INC.			
2017-07-04	From:	Core Products International Inc.			
	66596	ADJUVANTZ ULC			
2017-07-06	From:	ADJUVANTZ INC.			
	69253	TAIT COMMUNICATIONS NORTH AMERICA INC.			
2017-07-06	From:	TAIT NORTH AMERICA INC.			
	79854	MARK ANTHONY GROUP INC.			
2017-07-11	From:	656644 B.C. LTD.			
	70417	AST Trust Company (Canada) / Société de fiducie AST (Canada)			
2017-07-12	From:	CST TRUST COMPANY SOCIÉTÉ DE FIDUCIE CST			
	77796	White Skiff Holdings Inc.			
2017-07-13	From:	9326855 CANADA INC.			
	76446	FIELD CORE SERVICE SOLUTIONS COMPANY			
2017-07-18	From:	GRANITE SERVICES CANADA COMPANY			
	63325	AST Investor Services Inc. (Canada)			
		Services aux investisseurs AST Inc. (Canada)			

THE NEWFOUNDLAND AND LABRADOR GAZETTE

November 17, 2017

2017-07-19	From:	CST Investor Services Inc. Services aux investisseurs CST Inc.	From:	5871F 77875	EXCEL COLLECTION SERVICES LIMITED SUITE COLLECTIONS CANADA INC.
70639		IA AUTO FINANCE INC. / IA FINANCEMENT AUTO INC.	2017-07-17	79881	FINANCIAL HORIZONS INCORPORATED
2017-07-20	From:	CTL CORP.	From:	79817 76980	Estate Financial Inc. FINANCIAL HORIZONS INCORPORATED
76446		FIELD CORE SERVICE SOLUTIONS CANADA COMPANY	2017-07-17	79880	MAAX BATH INC.
2017-07-26	From:	FIELD CORE SERVICE SOLUTIONS COMPANY	From:	58578	MAAX BATH INC.
79948		IMMUNOTEC INC.	2017-07-18	79885	BUILDING PRODUCTS OF CANADA CORP./ LA CIE MATERIAUX DE CONSTRUCTION BP CANADA
Total Name Changes: 11			From:	6567F	BUILDING PRODUCTS OF CANADA CORP./LA CIE MATERIAUX DE CONSTRUCTION BP CANADA
<i>Corporations Act - Section 294</i> Extra-Provincial Registrations for Amalgamation For the Month of: July 2017			2017-07-21	79917	CONOCOPHILLIPS CANADA RESOURCES CORP.
2017-07-05	79817	Estate Financial Inc.	From:	61627	CONOCOPHILLIPS CANADA RESOURCES CORP.
From:	61040	ESTATE FINANCIAL INC.	2017-07-21	79918	JONES DESLAURIERS BLEVINS INSURANCE GROUP INC.
2017-07-05	79816	RioCan Management Inc.	From:	77257	JONES DESLAURIERS BLEVINS INSURANCE GROUP INC.
From:	63588	RIOCAN MANAGEMENT INC.	2017-07-26	79948	IMMUNOTEC INC.
2017-07-05	79823	Second Dimension International Limited/Deuxieme Dimension International Limitee	From:	55951	IMMUNOTEC INC.
From:	76220	SECOND DIMENSION INTERNATIONAL LIMITED/ DEUXIEME DIMENSION INTERNATIONAL LIMITEE	2017-07-27	79950	URECON LTD./LTÉE
2017-07-06	79832	WELLS FARGO EQUIPMENT FINANCE COMPANY / SOCIÉTÉ DE FINANCEMENT D'ÉQUIPEMENT WELLS FARGO	From:	69246	URECON LTD./LTÉE
From:	5019F	WELLS FARGO EQUIPMENT FINANCE COMPANY SOCIETE DE FINANCEMENT D'EQUIPEMENT WELLS FARGO	2017-07-28	79959	Power Plant Supply Company Ltd.
			From:	62490	140951 CANADA INC.
			Total Registrations for Amalgamation: 14		
2017-07-11	79854	MARK ANTHONY GROUP INC.	SERVICE NL Dean Doyle, Registrar of Companies		
From:	75377	MARK ANTHONY GROUP INC.			
2017-07-11	79853	SUITE EXCEL COLLECTIONS CANADA INC.	Nov 17		

URBAN AND RURAL PLANNING ACT, 2000

**NOTICE OF REGISTRATION
TOWN OF LEWISPORTE
MUNICIPAL PLAN
AMENDMENT No. 17, 2017, and
DEVELOPMENT REGULATIONS
AMENDMENT No. 24, 2017**

TAKE NOTICE that the TOWN OF LEWISPORTE Municipal Plan Amendment No. 17, 2017, and Development Regulations Amendment No. 24, 2017, as adopted by Council on the 1st day of August, 2017, has been registered by the Minister of Municipal Affairs and Environment.

In general terms, Municipal Plan Amendment No. 17, 2017, will re-designate land for a comprehensive subdivision development north of Bayview Heights and Second Avenue from Rural to Residential.

Development Regulations Amendment No. 24, 2017, will re-zone the same land along with additional land in the same general area from Rural (RUR) to Residential Medium Density (RMD) and Residential-Comprehensive Development Area (R-CDA) to Residential Medium Density (RMD).

The TOWN OF LEWISPORTE Municipal Plan Amendment No. 17, 2017, and Development Regulations Amendment No. 24, 2017, comes into effect on the day that this notice is published in *The Newfoundland and Labrador Gazette*. Anyone who wishes to inspect a copy of the TOWN OF LEWISPORTE Municipal Plan Amendment No. 17, 2017, and Development Regulations Amendment No. 24, 2017, may do so at the Town Office, Lewisporte, during normal working hours.

TOWN OF LEWISPORTE
Elaine Bursey, Town Clerk

Nov 17

**NOTICE OF REGISTRATION
TOWN OF MASSEY DRIVE
MUNICIPAL PLAN 2017-2027 AND
DEVELOPMENT REGULATIONS 2017-2027**

TAKE NOTICE that the TOWN OF MASSEY DRIVE Municipal Plan 2017-2027 and Development Regulations 2017-2027, adopted on the 29th day of August, 2017 and approved on the 28th day of September, 2017, have been registered by the Minister of Municipal Affairs and Environment.

The TOWN OF MASSEY DRIVE Municipal Plan 2017-2027 and Development Regulations 2017-2027 come into effect on the day that this notice is published in *The Newfoundland and Labrador Gazette*. Anyone who wishes to inspect a copy of the TOWN OF MASSEY DRIVE

Municipal Plan 2017-2027 and Development Regulations 2017-2027 may do so at the Massey Drive Town Hall at 85 Massey Drive, Massey Drive, Newfoundland and Labrador, during normal working hours.

TOWN OF MASSEY DRIVE
Rodger Hunt, Town Manager

Nov 17

**NOTICE OF REGISTRATION
TOWN OF UPPER ISLAND COVE
DEVELOPMENT REGULATIONS
AMENDMENT No. 13, 2017**

TAKE NOTICE that the TOWN OF UPPER ISLAND COVE Development Regulations Amendment No. 13, 2017, adopted by Council on the 12th day of September, 2017, has been registered by the Minister of Municipal Affairs and Environment.

Development Regulations Amendment No. 13, 2017, will add recreational trailer park/camping park to the list of examples for Non-Building Uses, as found in Schedule B, the Classification of Uses of Land and Buildings. The Amendment will also add recreational trailer park/camping park as discretionary use to the Rural Land Use Zone Table and add a condition restricting recreational trailer park/camping park at or near Neddie Smith's Pond only.

The TOWN OF UPPER ISLAND COVE Development Regulations Amendment No. 13, 2017, comes into effect on the day that this notice is published in *The Newfoundland and Labrador Gazette*. Anyone who wishes to inspect a copy of the TOWN OF UPPER ISLAND COVE Development Regulations Amendment No. 13, 2017, may do so at the Town Office, Upper Island Cove during normal working hours.

TOWN OF UPPER ISLAND COVE
Neil Shute, Town Clerk

Nov 17

**NOTICE OF REGISTRATION
TOWN OF TWILLINGATE
MUNICIPAL PLAN AND
DEVELOPMENT REGULATIONS, 2017**

TAKE NOTICE that the TOWN OF TWILLINGATE Municipal Plan Amendment No. 15 and Development Regulations Amendment No. 15, adopted on the 17th day of July 2017, have been registered by the Minister of Municipal Affairs and Environment.

The purpose of these amendments is to redesignate an area of land at 252 Bayview Street from Rural to Mixed Development to allow for development of visitor rental cabins.

These amendments come into effect on the day that this notice is published in *The Newfoundland and Labrador Gazette*. Anyone who wishes to inspect a copy of the documents may do so at the Twillingate Town Office during normal business hours.

TOWN OF TWILLINGATE
David Burton, Town Clerk

Nov 17

LANDS ACT

NOTICE OF INTENT, SECTION 7 LANDS ACT, SNL1991 c36 AS AMENDED

NOTICE IS HEREBY given that an application has been made to the Department of Fisheries and Land Resources, Agriculture and Lands Branch, to acquire title, pursuant to section 7(2) (d) of the said Act, to that piece of Crown lands situated within 15 metres of the waters of Humber River for the purpose of erecting a floating dock.

The application may intrude on the 15 metre shoreline of the above mentioned water body(s) in various locations. For a detailed map, please see website: <http://www.ma.gov.nl.ca/lands/sec7notifications.html>.

Please note: It may take up to five (5) days from the date of application for details to appear on the website.

Any person wishing to object to the application must file the objection in writing with reasons, within 30 days from the publication of notice on the Department of Fisheries and Land Resources website, Crown Lands, <http://www.ma.gov.nl.ca/lands/index.html>, to the Minister of Fisheries and Land Resources by mail or email to the nearest Regional Lands Office:

- Eastern Regional Lands Office, P.O. Box 8700, Howley Building, Higgins Line, St. John's, NL, A1B 4J6 Email: easternlandsoffice@gov.nl.ca
- Central Regional Lands Office, P.O. Box 2222, Gander, NL, A1V 2N9 Email: centrallandsoffice@gov.nl.ca
- Western Regional Lands Office, P.O. Box 2006, Sir Richard Squires Building, Corner Brook, NL, A2H 6J8 Email: westernregionlands@gov.nl.ca
- Labrador Regional Lands Office, P.O. Box 3014, Station "B", Happy Valley-Goose Bay, NL, A0P 1E0 Email: labradorlandsoffice@gov.nl.ca

(DISCLAIMER: *The Newfoundland and Labrador Gazette* publishes a NOTICE OF INTENT received from the Applicant and takes no responsibility for errors or omissions in the property being more particularly described.)

Nov 17

NOTICE OF INTENT, SECTION 7 LANDS ACT, SNL1991 c36 AS AMENDED

NOTICE IS HEREBY given that an application has been made to the Department of Fisheries and Land Resources, Agriculture and Lands Branch, to acquire title, pursuant to section 7(2) (d) of the said Act, to that piece of Crown lands situated within 15 metres of the waters of Little Hearts Ease for the purpose of a wharf.

The application may intrude on the 15 metre shoreline of the above mentioned water body(s) in various locations. For a detailed map, please see website: <http://www.ma.gov.nl.ca/lands/sec7notifications.html>.

Please note: It may take up to five (5) days from the date of application for details to appear on the website.

Any person wishing to object to the application must file the objection in writing with reasons, within 30 days from the publication of notice on the Department of Fisheries and Land Resources website, Crown Lands, <http://www.ma.gov.nl.ca/lands/index.html>, to the Minister of Fisheries and Land Resources by mail or email to the nearest Regional Lands Office:

- Eastern Regional Lands Office, P.O. Box 8700, Howley Building, Higgins Line, St. John's, NL, A1B 4J6 Email: easternlandsoffice@gov.nl.ca
- Central Regional Lands Office, P.O. Box 2222, Gander, NL, A1V 2N9 Email: centrallandsoffice@gov.nl.ca
- Western Regional Lands Office, P.O. Box 2006, Sir Richard Squires Building, Corner Brook, NL, A2H 6J8 Email: westernregionlands@gov.nl.ca
- Labrador Regional Lands Office, P.O. Box 3014, Station "B", Happy Valley-Goose Bay, NL, A0P 1E0 Email: labradorlandsoffice@gov.nl.ca

(DISCLAIMER: *The Newfoundland and Labrador Gazette* publishes a NOTICE OF INTENT received from the Applicant and takes no responsibility for errors or omissions in the property being more particularly described.)

Nov 17

NOTICE OF INTENT, SECTION 7 LANDS ACT, SNL1991 c36 AS AMENDED

NOTICE IS HEREBY given that an application has been made to the Department of Fisheries and Land Resources, Agriculture and Lands Branch, to acquire title, pursuant to section 7(2) (d) of the said Act, to that piece of Crown lands situated within 15 metres of the waters of Three Island Pond, Paradise, for the purpose of a wharf.

The application may intrude on the 15 metre shoreline of the above mentioned water body(s) in various locations. For a detailed map, please see website: <http://www.ma.gov.nl.ca/lands/sec7notifications.html>.

Please note: It may take up to five (5) days from the date of application for details to appear on the website.

Any person wishing to object to the application must file the objection in writing with reasons, within 30 days from the publication of notice on the Department of Fisheries and Land Resources website, Crown Lands, <http://www.ma.gov.nl.ca/lands/index.html>, to the Minister of Fisheries and Land Resources by mail or email to the nearest Regional Lands Office:

- Eastern Regional Lands Office, P.O. Box 8700, Howley Building, Higgins Line, St. John's, NL, A1B 4J6 Email: easternlandsoffice@gov.nl.ca
- Central Regional Lands Office, P.O. Box 2222, Gander, NL, A1V 2N9 Email: centrallandsoffice@gov.nl.ca
- Western Regional Lands Office, P.O. Box 2006, Sir Richard Squires Building, Corner Brook, NL, A2H 6J8 Email: westernregionlands@gov.nl.ca
- Labrador Regional Lands Office, P.O. Box 3014, Station "B", Happy Valley-Goose Bay, NL, A0P 1E0 Email: labradorlandsoffice@gov.nl.ca

(DISCLAIMER: *The Newfoundland and Labrador Gazette* publishes a NOTICE OF INTENT received from the Applicant and takes no responsibility for errors or omissions in the property being more particularly described.)

Nov 17

MOTOR CARRIER ACT

IN THE MATTER OF THE MOTOR CARRIER ACT, RSNL1990 cM-19 AND IN THE MATTER OF THE APPLICATION FOR A MOTOR CARRIER CERTIFICATE

NOTICE OF APPLICATION

TAKE NOTICE that LABRADOR-GRENFELL REGIONAL HEALTH AUTHORITY of 227 Hamilton River Road, Happy Valley-Goose Bay in the Province of Newfoundland and Labrador A0P 1C0 has applied to the Board of Commissioners of Public Utilities under the provisions of the *Motor Carrier Act*, RSNL1990 cM-19, for the issuance of a Certificate as a motor carrier to provide the following service:

*IRREGULAR SPECIALTY AMBULANCE SERVICE
for the transportation of persons requiring medical
attention or under medical care upon the request of a
medical doctor or registered nurse*

from Happy Valley-Goose Bay, Sheshatshiu, North West River, and any point on Route 500, Route 510 and Route 520 to any hospital, nursing home, first aid station or home for senior citizens and upon the specific request of a medical doctor, registered nurse or a police officer between any two points within the province of Newfoundland and Labrador.

The Board, having reviewed the application, has granted provisional approval and shall issue said Certificate, unless a person who objects to the application files with the Board a notice of objection to the application together with a written statement setting out in full the reasons why the application should be denied and relevant documentary evidence. The objector must also serve on the applicant a copy of the notice of objection, the statement of reasons and the relevant documentary evidence filed with the Board by personal service or by prepaid, registered mail, at the address shown on the application, and proof of service must be supplied to the Board.

The evidence to be submitted must be received by the Board within twenty days of the date of the publication of this notice, at the office of the Board at Suite East 210, Prince Charles Building, Torbay Road, NL or by mail to P.O. Box 21040, St. John's, NL A1A 5B2.

Dated at Happy Valley- Goose Bay, this 10th day of November, 2017.

ED SHARPE
Signature of Applicant

Nov 17

QUIETING OF TITLES ACT

2017 06G 0132 IN THE SUPREME COURT OF NEWFOUNDLAND AND LABRADOR TRIAL DIVISION (GENERAL)

NOTICE OF APPLICATION under the *Quieting of Titles Act*, RSNL1990 cQ-3.

NOTICE IS HEREBY given to all parties that LOYOLA PERRY, of the Town of St. Alban's, in the District of Fortune-Cape La Hune, in the Province of Newfoundland and Labrador, has applied to the Supreme Court, Trial Division, Grand Bank, to have title to all that piece or parcel of property situate at St. Alban's, in the Province of Newfoundland and Labrador, which property is more particularly described in Schedules "A" and "C" hereto annexed and shown in Schedules "B" and "D" hereto annexed.

ALL BEARINGS aforementioned, for which LOYOLA PERRY claims to be the owner investigated and for a Declaration that he is the absolute owner in fee simple in possession and the said LOYOLA PERRY has been ordered to public Notice of Application as required by the above named Act.

All persons having title adverse to the said title claimed

by the said LOYOLA PERRY shall file in the Registry of the Supreme Court of Newfoundland and Labrador, Trial Division, Grand Bank, particulars of such adverse claim and serve the same together with an Affidavit verifying same on the undersigned Solicitors for the Petitioner on or before the 17th day of December, 2017, after which date no party having any claim shall be permitted to file the same or to be heard except by special leave of the Court and subject to such conditions as the Court may deem just.

All such adverse claims shall be investigated then in such manner as the Supreme Court of Newfoundland and Labrador, Trial Division, Grand Bank, may direct.

DATED AT Clarenville, in the Province of Newfoundland and Labrador, this 2nd day of October, 2017.

MILLS PITTMAN & TWYNE
Solicitors for the Applicant
PER: Gregory J. French

ADDRESS FOR SERVICE:
111 Manitoba Drive
Suite 201
Clarenville, NL A5A 1K2

SCHEDULE "A"

All that piece or parcel of land situate being at St. Alban's in the Provincial Electoral District of Fortune Bay-Cape La Hune, Newfoundland and Labrador, abutted and bounded as follows, that is to say:

Beginning at a point on the northeasterly limit of Main Road (variable width) the said point having Three Degree MTM Coordinates of north 5,302,224.387 metres and east 317,272.009 metres.

Thence running north sixty degrees fifteen minutes twenty-two seconds east (N60°15'22"E) twelve decimal eight one eight (12.818) metres;

Thence running in an easterly and southerly direction along a ten (10) metres wide reservation for the waters of Bay D'Espoir to a point which bears south twenty-five degrees forty-seven minutes ten seconds east (S25°47'10"E) a straight line distance of one hundred eighty six decimal two four one (186.241) metres;

Thence running south eighty degrees five minutes six seconds west (S80°05'06"W) twenty five decimal nine one four (25.914) metres;

Thence running along the easterly limit of Main Road (variable width), north two degrees forty-six minutes twenty-two seconds west (N02°46'22"W) eighteen decimal one eight seven (18.187) metres;

Thence running along the easterly limit of Main Road (variable width), north thirteen degrees thirty-two minutes twenty-nine seconds east (N13°32'29"E) one hundred seven decimal three two six (107.326) metres;

Thence running along the northeasterly limit of Main Road (variable width,) north forty-two degrees twenty-two minutes zero seconds west (N42°22'00"W) twenty two decimal five seven nine (22.579) metres;

Thence running along the northeasterly limit of Main Road (variable width), north seventy-four degrees fifty-three minutes forty seconds west (N74°53'40"W) twenty four decimal eight two seven (24.827) metres;

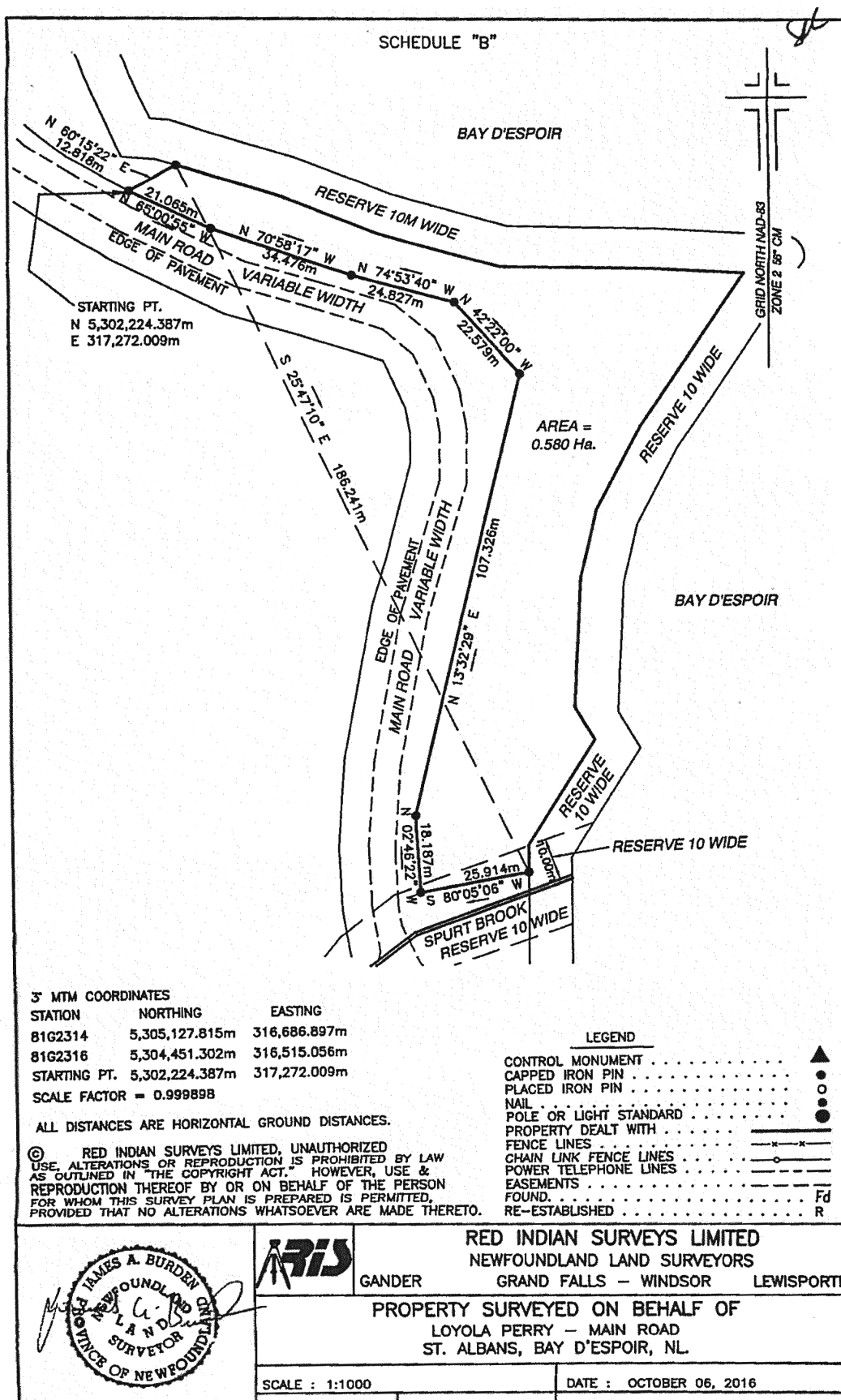
Thence running along the northeasterly limit of Main Road (variable width), north seventy degrees fifty-eight minutes seventeen seconds west (N70°58'17"W) thirty four decimal four seven six (34.476) metres;

Thence running along the northeasterly limit of Main Road (variable width), north sixty-five degrees zero minutes fifty-five seconds west (N65°00'55"W) twenty one decimal zero six five (21.065) metres more or less to point of beginning. Containing in all zero decimal five eight zero (0.580) Hectares.

All bearings are referred to Grid North (MTM Zone 2 - NAD83).

Job No. 16-470

Date: October 6, 2016



SCHEDULE “C”

All that piece or parcel of land situate being at St. Alban's in the Provincial Electoral District of Fortune Bay-Cape La Hune, Province of Newfoundland and Labrador, abutted and bounded as follows, that is to say: Beginning at a point on the southwesterly limit of Main Road (20.12 metres wide) the said point having Three Degree MTM Coordinates of north 5,302,217.026 metres and east 317, 251.755 metres. Thence along the southwesterly limit of Main Road (20.12 metres wide) south fifty-nine degrees fifty-nine minutes thirty-one seconds east for sixteen decimal seven three one metres, thence along the southwesterly limit of Main Road (20.12 metres wide) south sixty-three degrees fifty-seven minutes forty-one seconds east for thirty one decimal zero one eight metres thence along the southwesterly limit of Main Road (20.12 metres wide) south seventy-three degrees twenty-seven minutes forty-two seconds east for eight decimal two six six metres, thence along westerly limit of Main Road (20.12 metres wide) south twenty-five degrees twenty-five minutes sixteen seconds east for eleven decimal nine six two metres, thence along the westerly limit of Main Road (20.12 metres wide) south ten degrees ten minutes seven seconds east for six decimal three nine six metres, thence along the westerly limit of Main Road (20.12 metres wide) south zero degrees twenty-two minutes thirty-three seconds west for seven decimal three four nine metres, thence along the northwesterly limit of Main Road (20.12 metres wide) south fourteen degrees thirty-one minutes forty-five seconds west for twenty three decimal zero four one metres, thence along the northwesterly limit of Main Road (20.12 metres wide) south sixteen degrees twenty-seven minutes five seconds west for eleven decimal eight zero seven metres, thence along the northwesterly limit of Main Road (20.12 metres wide) south ten degrees thirty-seven minutes twenty-one seconds west for thirty six decimal nine four two metres, thence along property of Stan Hoskins south sixty-eight degrees fifty minutes fifty-eight seconds west for twenty seven decimal seven six nine metres, thence along Crown land north twenty-nine degrees thirty minutes zero seconds west for one hundred forty decimal eight six six metres, thence along Crown land north sixty degrees thirty minutes zero seconds east for twenty nine decimal eight zero six metres to point of beginning and containing in all 0.819 hectares. Note: the above described parcel of land being subject to a Hydro Utility Easement (5.4 metres wide) as shown on accompanying plan;

All bearings are referred to Grid North (Zone 2- NAD83).

Job No. 08-442

Date: September 22, 2008



TRUSTEE ACT

ESTATE NOTICE

IN THE MATTER of the Estate of JASON SCOTT TOBIN, Late of Stephenville Crossing, in the Province of Newfoundland and Labrador, Deceased: October 27, 2017.

All persons claiming to be creditors of or who have any claims or demands upon or affecting the Estate of JASON SCOTT TOBIN, Late of Stephenville Crossing, in the Province of Newfoundland and Labrador, Deceased, are hereby requested to send the particulars of the same in writing, duly attested, to the undersigned Solicitor for the Administratrix of the Estate on or before the 20th day of December, 2017, after which date the said Administratrix will proceed to distribute the said Estate having regard only to the claims of which notice shall have been received.

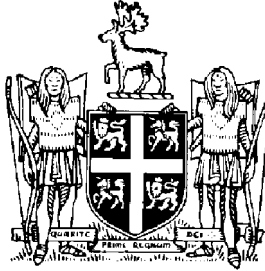
DATED at Stephenville, Newfoundland and Labrador, this 14th day of November, 2017.

ROXANNE PIKE LAW OFFICE
Solicitor for the Administratrix
PER: Roxanne Pike

ADDRESS FOR SERVICE:
P.O Box 272
43 Main Street
Stephenville, NL A2N 2Z4

Tel: (709) 643-6436
Fax: (709) 643-9343

Nov 17



THE NEWFOUNDLAND AND LABRADOR GAZETTE

**PART II
SUBORDINATE LEGISLATION
FILED UNDER THE STATUTES AND SUBORDINATE LEGISLATION ACT**

Vol. 92

ST. JOHN'S, FRIDAY, NOVEMBER 17, 2017

No. 46

**NEWFOUNDLAND AND LABRADOR
REGULATION**

NLR 100/17



**NEWFOUNDLAND AND LABRADOR
REGULATION 100/17**

Agricultural Land Reserve Order (Amendment)
under the
Lands Act

(Filed November 16, 2017)

Under the authority of subsection 8(2) of the *Lands Act*, the minister, with the approval of the Lieutenant-Governor in Council, makes the following Order.

Dated at St. John's, November 16, 2017.

Gerry Byrne
Minister of Fisheries and Land Resources

Ann Marie Hann
Clerk of the Executive Council

ORDER

Analysis

1. Sch. Amdt.

NLR 44/17

1. The Schedule to the *Agricultural Land Reserve Order* is amended by adding immediately after the description for Area 19 the following:

Area 20

All that piece or parcel of land situated at Kippens, in the electoral district of Stephenville-Port au Port, in the Province of Newfoundland and Labrador, abutted and bound as follows:

Commencing at a point being the most northern corner of the within described parcel, having coordinates of east 294 154 metres and north 5 382 180 metres, more or less;

Then heading in a southeasterly direction to a point having coordinates of east 294 282 metres and north 5 381 947 metres, more or less;

Then heading in a southwesterly direction to a point having coordinates of east 293 788 metres and north 5 381 209 metres, more or less;

Then heading in a northwesterly direction to a point having coordinates of east 293 637 metres and north 5 381 549 metres, more or less;

Then heading in a northeasterly direction to a point having coordinates of east 293 722 metres and north 5 381 988 metres, more or less;

Then, in a northeasterly direction, back to the point of commencement.

The above described piece or parcel of land containing approximately 33 hectares, more or less, as depicted in the Provincial Land Use Atlas.

The above described parcel is subject to all reservations, easements, rights-of-way as necessary and those required by law, conditions held in original Crown titles and all rights and privileges held in lands lawfully alienated from the Crown.

All bearings and coordinates being referenced to NAD 1983 MTM Zone 3.

Area 21

All that piece or parcel of land situated at Wych Hazel Pond, in the electoral district of Conception Bay South, in the Province of Newfoundland and Labrador, abutted and bound as follows:

Commencing at a point being the southeast corner of the within described parcel, near the Trans Canada Highway, having coordinates of east 309 985 metres and north 5 258 280 metres, more or less;

Then heading west to a point having coordinates of east 309 168 metres and north 5 258 345 metres, more or less;

Then heading north to a point having coordinates of east 309 274 metres and north 5 261 501 metres, more or less;

Then heading east to a point having coordinates of east 311 161 metres and north 5 261 461 metres, more or less;

Then heading south to a point having coordinates of east 311 170 metres and north 5 259 956 metres, more or less;

Then, in a southwest direction, back to the point of commencement.

The above described piece or parcel of land containing approximately 504 hectares, more or less, as depicted in the Provincial Land Use Atlas.

The above described parcel is subject to all reservations, easements, rights-of-way as necessary and those required by law, conditions held in original Crown titles and all rights and privileges held in lands lawfully alienated from the Crown.

All bearings and coordinates being referenced to NAD 1983 MTM Zone 1.

Area 22

All that piece or parcel of land situated at Northwest Pond, in the electoral district of Burin-Grand Bank, in the Province of Newfoundland and Labrador, abutted and bound as follows:

Commencing at a point being the northern most corner of the within described parcel having coordinates of east 355 472 metres and north 5 228 316 metres, more or less;

Then heading in a southeast direction to a point having coordinates of east 356 280 metres and north 5 227 621 metres, more or less;

Then heading in a southeast direction to a point having coordinates of east 356 699 metres and north 5 225 669 metres, more or less;

Then heading in a southwest direction to a point having coordinates of east 355 989 metres and north 5 225 038 metres, more or less;

Then heading in a northwest direction to a point having coordinates of east 354 318 metres and north 5 226 620 metres, more or less;

Then heading in a northwest direction to a point having coordinates of east 354 141 metres and north 5 227 236 metres, more or less;

Then, in a northeast direction, back to the point of commencement.

The above described piece or parcel of land containing approximately 433 hectares, more or less, as depicted in the Provincial Land Use Atlas.

The above described parcel is subject to all reservations, easements, rights-of-way as necessary and those required by law, conditions held in original Crown titles and all rights and privileges held in lands lawfully alienated from the Crown.

All bearings and coordinates being referenced to NAD 1983 MTM Zone 2.

Area 23

All that piece or parcel of land situated at Irishtown, in the electoral district of Ferryland, in the Province of Newfoundland and Labrador, abutted and bound as follows:

Commencing at a point being the southern most corner of the within described parcel having coordinates of east 317 034 metres and north 5 242 766 metres, more or less;

Then heading in an irregular northwest direction to a point having coordinates of east 314 332 metres and north 5 245 203 metres, more or less;

Then heading in a northeast direction to a point having coordinates of east 315 080 metres and north 5 247 714 metres, more or less;

Then heading in an irregular southeast direction to a point having coordinates of east 317 482 metres and north 5 245 380 metres, more or less;

Then heading in a northern direction to a point having coordinates of east 316 780 metres and north 5 247 511 metres, more or less;

Then heading in a northeasterly direction to a point having coordinates of east 317 394 metres and north 5 248 194 metres, more or less;

Then heading in a southerly direction to a point having coordinates east 318 301 metres and north 5 244 985 metres, more or less;

Then heading in a westerly direction to a point having coordinates east 316 906 metres and north 5 244 638 metres, more or less;

Then, in a southerly direction, back to the point of commencement.

The above described piece or parcel of land containing approximately 968 hectares, more or less, as depicted in the Provincial Land Use Atlas.

The above described parcel is subject to all reservations, easements, rights-of-way as necessary and those required by law, conditions held in original Crown titles and all rights and privileges held in lands lawfully alienated from the Crown.

All bearings and coordinates being referenced to NAD 1983 MTM Zone 1.

Area 24

All that piece or parcel of land situated at Whitbourne, in the electoral districts of Placentia-St. Mary's and Harbour Grace-Port de Grave, in the Province of Newfoundland and Labrador, abutted and bound as follows:

Commencing at a point being the southwestern most corner of the within described parcel, next to the Trans Canada Highway having coordinates of east 266 189 metres and north 5 257 325 metres, more or less;

Then heading in a northerly direction to a point having coordinates of east 267 393 metres and north 5 260 218 metres, more or less;

Then heading in an irregular northeast direction to a point having coordinates of east 273 484 metres and north 5 263 432 metres, more or less;

Then heading in an irregular southwest direction to a point having coordinates of east 268 704 metres and north 5 256 900 metres, more or less;

Then, in an irregular westerly direction, along the Trans Canada Highway, back to the point of commencement.

The above described piece or parcel of land containing approximately 1567 hectares, more or less, as depicted in the Provincial Land Use Atlas.

The above described parcel is subject to all reservations, easements, rights-of-way as necessary and those required by law, conditions held in original Crown titles and all rights and privileges held in lands lawfully alienated from the Crown.

All bearings and coordinates being referenced to NAD 1983 MTM Zone 1.

Area 25

All that piece or parcel of land situated near Port Blandford, in the electoral district of Bonavista, in the Province of Newfoundland and Labrador, abutted and bound as follows:

Commencing at a point being the southwestern most corner of the within described parcel, having coordinates of east 221 031 metres and north 5 358 627 metres, more or less;

Then heading north to a point having coordinates of east 220 978 metres and north 5 360 163 metres, more or less;

Then heading in an irregular northeast direction, along the shoreline, to a point having coordinates of east 222 386 metres and north 5 361 878 metres, more or less;

Then heading in an irregular southeast direction to a point having coordinates of east 223 400 metres and north 5 361 270 metres, more or less;

Then heading in a southern direction to a point having coordinates of east 223 116 metres and north 5 358 859 metres, more or less;

Then, in an irregular southwest direction, back to the point of commencement.

The above described piece or parcel of land containing approximately 598 hectares, more or less, as depicted in the Provincial Land Use Atlas.

The above described parcel is subject to all reservations, easements, rights-of-way as necessary and those required by law, conditions held in original Crown titles and all rights and privileges held in lands lawfully alienated from the Crown.

All bearings and coordinates being referenced to NAD 1983 MTM Zone 1.

Area 26

All that piece or parcel of land situated near Spread Eagle, in the electoral district of Placentia-St. Mary's, in the Province of Newfoundland and Labrador, abutted and bound as follows:

Commencing at the most southerly point of the within described parcel, having coordinates of east 256 351 metres and north 5 243 927 metres, more or less;

Then heading in an irregular northwest direction to a point having coordinates of east 253 120 metres and north 5 246 021 metres, more or less;

Then heading in an irregular northern direction to a point having coordinates of east 253 231 metres and north 5 250 206 metres, more or less;

Then heading in an irregular northeast direction to a point having coordinates of east 257 344 metres and north 5 256 019 metres, more or less;

Then heading in an irregular southeast direction to a point having coordinates of east 259 257 metres and north 5 254 251 metres, more or less;

Then heading in an irregular northeast direction to a point having coordinates of east 262 077 metres and north 5 256 114 metres, more or less;

Then heading in an irregular southern direction to a point having coordinates of east 261 325 metres and north 5 246 068 metres, more or less;

Then heading in an irregular southwest direction to a point having coordinates of east 259 312 metres and north 5 243 963 metres, more or less;

Then, in an irregular westerly direction, back to the point of commencement.

The above described piece or parcel of land containing approximately 5551 hectares, more or less, as depicted in the Provincial Land Use Atlas.

The above described parcel is subject to all reservations, easements, rights-of-way as necessary and those required by law, conditions held in original Crown titles and all rights and privileges held in lands lawfully alienated from the Crown.

All bearings and coordinates being referenced to NAD 1983 MTM Zone 1.

Area 27

All that piece or parcel of land situated near Whitbourne, in the electoral district of Placentia-St. Mary's, in the Province of Newfoundland and Labrador, abutted and bound as follows:

Commencing at a point being the southeastern most corner of the within described parcel, having coordinates of east 266 128 metres and north 5 237 597 metres, more or less;

Then heading in a northwest direction to a point having coordinates of east 264 595 metres and north 5 237 985 metres, more or less;

Then heading in an irregular northwest direction to a point having coordinates of east 263 071 metres and north 5 240 069 metres, more or less;

Then heading in a northerly direction to a point having coordinates of east 264 186 metres and north 5 251 373 metres, more or less;

Then heading in an irregular northerly direction to a point having coordinates of east 265 902 metres and north 5 252 880 metres, more or less;

Then heading east to a point having coordinates of east 267 957 metres and north 5 252 865 metres, more or less;

Then heading south to a point having coordinates of east 267 979 metres and north 5 250 992 metres, more or less;

Then heading east to a point having coordinates of east 269 874 metres and north 5 250 981 metres, more or less;

Then heading in an irregular southwesterly direction to a point having coordinates of east 267 161 metres and north 5 242 366 metres, more or less;

Then heading southwest to a point having coordinates of east 264 479 metres and north 5 239 494 metres, more or less;

Then heading southeast to a point having coordinates of east 266 380 metres and north 5 238 917 metres, more or less;

Then, in an irregular southerly direction, back to the point of commencement.

The above described piece or parcel of land containing approximately 3834 hectares, more or less, as depicted in the Provincial Land Use Atlas.

The above described parcel is subject to all reservations, easements, rights-of-way as necessary and those required by law, conditions held in original Crown titles and all rights and privileges held in lands lawfully alienated from the Crown.

All bearings and coordinates being referenced to NAD 1983 MTM Zone 1.

Area 28

All that piece or parcel of land situated near Cormack, in the electoral district of Humber-Gros Morne, in the Province of Newfoundland and Labrador, abutted and bound as follows:

Commencing at a point being the western most corner of the within described parcel, having coordinates of east 377 553 metres and north 5 460 204 metres, more or less;

Then heading in an irregular northeast direction to a point having coordinates of east 380 249 metres and north 5 461 951 metres, more or less;

Then heading in an irregular southeast direction to a point having coordinates of east 380 868 metres and north 5 458 477 metres, more or less;

Then heading in an irregular southerly direction to a point having coordinates of east 380 333 metres and north 5 457 631 metres, more or less;

Then, in an irregular northwest direction, back to the point of commencement.

The above described piece or parcel of land containing approximately 674 hectares, more or less, as depicted in the Provincial Land Use Atlas.

The above described parcel is subject to all reservations, easements, rights-of-way as necessary and those required by law, conditions held in original Crown titles and all rights and privileges held in lands lawfully alienated from the Crown.

All bearings and coordinates being referenced to NAD 1983 MTM Zone 3.

Area 29

All that piece or parcel of land situated near Cormack, in the electoral district of Humber-Gros Morne, in the Province of Newfoundland and Labrador, abutted and bound as follows:

Commencing at a point being the southern most corner of the within described parcel, having coordinates of east 204 999 metres and north 5 461 796 metres, more or less;

Then heading in a northwest direction to a point having coordinates of east 204 260 metres and north 5 462 196 metres, more or less;

Then heading in a northerly direction to a point having coordinates of east 204 322 metres and north 5 462 862 metres, more or less;

Then heading in an irregular northeast direction to a point having coordinates of east 205 450 metres and north 5 464 114 metres, more or less;

Then heading in a southeast direction to a point having coordinates of east 205 859 metres and north 5 463 756 metres, more or less;

Then, in a southwest direction, back to the point of commencement.

The above described piece or parcel of land containing approximately 187 hectares, more or less, as depicted in the Provincial Land Use Atlas.

The above described parcel is subject to all reservations, easements, rights-of-way as necessary and those required by law, conditions held in original Crown titles and all rights and privileges held in lands lawfully alienated from the Crown.

All bearings and coordinates being referenced to NAD 1983 MTM Zone 2.

Area 30

All that piece or parcel of land situated near King's Point, in the electoral district of Baie Verte-Green Bay, in the Province of Newfoundland and Labrador, abutted and bound as follows:

Commencing at a point being the southeastern most corner of the within described parcel, having coordinates of east 295 312 metres and north 5 494 879 metres, more or less;

Then heading in an irregular westerly direction, to the shoreline of Southwest Arm, to a point having coordinates of east 293 751 metres and north 5 494 403 metres, more or less;

Then heading in an irregular northerly direction, following said shoreline, to a point having coordinates of east 294 021 metres and north 5 496 104 metres, more or less;

Then heading in an irregular easterly direction to a point having coordinates of east 294 945 metres and north 5 495 847 metres, more or less;

Then, in a southeast direction, back to the point of commencement.

The above described piece or parcel of land containing approximately 225 hectares, more or less, as depicted in the Provincial Land Use Atlas.

The above described parcel is subject to all reservations, easements, rights-of-way as necessary and those required by law, conditions held in original Crown titles and all rights and privileges held in lands lawfully alienated from the Crown.

All bearings and coordinates being referenced to NAD 1983 MTM Zone 2.

Area 31

All that piece or parcel of land situated at Bridgers Brook, in the electoral district of Humber-Gros Morne, in the Province of Newfoundland and Labrador, abutted and bound as follows:

Commencing at a point being the southern most corner of the within described parcel, having coordinates of east 202 373 metres and north 5 464 947 metres, more or less;

Then heading in a northwest direction to a point having coordinates of east 201 359 metres and north 5 465 764 metres, more or less;

Then heading in a northeast direction to a point having coordinates of east 203 236 metres and north 5 467 477 metres, more or less;

Then heading in a northwest direction to a point having coordinates east 203 056 metres and north 5 468 124 metres, more or less;

Then heading in an irregular northeasterly direction to a point having coordinates of east 206 226 metres and north 5 470 928 metres, more or less;

Then heading in a northwest direction to a point having coordinates east 205 904 metres and north 5 471 328 metres more or less;

Then heading in a northeast direction to a point having coordinates east 207 056 metres and north 5 472 268 metres, more or less;

Then heading in a southwest direction to a point having coordinates east 206 786 metres and north 5 471 038 metres, more or less;

Then heading in a southeast direction to a point having coordinates of east 207 355 metres and north 5 470 386 metres, more or less;

Then, in a southwest direction, back to the point of commencement.

The above described piece or parcel of land containing approximately 979 hectares, more or less, as depicted in the Provincial Land Use Atlas.

The above described parcel is subject to all reservations, easements, rights-of-way as necessary and those required by law, conditions held in original Crown titles and all rights and privileges held in lands lawfully alienated from the Crown.

All bearings and coordinates being referenced to NAD 1983 MTM Zone 2.

Area 32

All that piece or parcel of land situated near West Bottom, in the electoral district of Baie Verte-Green Bay, in the Province of Newfoundland and Labrador, abutted and bound as follows:

Part A

Commencing at a point being the southern most corner of the within described parcel, having coordinates of east 294 471 metres and north 5 476 121 metres, more or less;

Then heading in an irregular northwest direction to a point having coordinates of east 292 916 metres and north 5 479 442 metres, more or less;

Then heading in an irregular northeast direction following the sinuosities of Burnt Berry Brook to a point having coordinates of east 294 195 metres and north 5 481 522 metres, more or less;

Then heading in an easterly direction to a point having coordinates of east 295 191 metres and north 5 481 417 metres, more or less;

Then heading in an irregular southwesterly direction to a point having coordinates of east 293 227 metres and north 5 478 943 metres, more or less;

Then heading in an irregular northeasterly direction to a point having coordinates of east 295 646 metres and north 5 480 732 metres, more or less;

Then in a southeast direction to a point having coordinates east 296 436 metres and north 5 478 738 metres, more or less;

Then, in an irregular southwest direction, back to the point of commencement.

Part B

Commencing at a point being the southern most corner of the within described parcel, having coordinates of east 292 910 metres and north 5 479 449 metres, more or less;

Then heading in an irregular northwest direction to a point having coordinates of east 289 290 metres and north 5 482 070 metres, more or less;

Then heading in an irregular westerly direction to a point having coordinates of east 285 379 metres and north 5 481 522 metres, more or less;

Then heading in a northwest direction to a point having coordinates east 285 005 metres and north 5 481 930 metres, more or less;

Then heading in a northeasterly direction following the sinuosity of Indian Brook to a point having coordinates east 294 267 metres and north 5 484 517 metres, more or less;

Then heading in a southwest direction to a point having coordinates east 292 407 metres and north 5 482 262 metres, more or less;

Then heading in a southeast direction to a point on Burnt Berry Brook having coordinates east 294 169 metres and north 5 481 534 metres, more or less;

Then, in an irregular southwesterly direction along Burnt Berry Brook to the point of commencement.

Part C

Commencing at a point being the southwestern most corner of the within described parcel, having coordinates of east 290 813 metres and north 5 484 244 metres, more or less;

Then heading in an irregular northeast direction to a point having coordinates of east 293 002 metres and north 5 485 776 metres, more or less;

Then heading in an irregular northeast direction to a point having coordinates of east 296 531 metres and north 5 486 973 metres, more or less;

Then heading in a southeast direction to a point having coordinates east 296 998 metres and north 5 486 748 metres, more or less;

Then heading in a southwest direction to a point on Indian Brook having coordinates east 296 144 metres and north 5 486 024 metres, more or less;

Then in an irregular southwesterly direction along Indian Brook, back to the point of commencement.

Part D

Commencing at a point being the southeastern most corner of the within described parcel, having coordinates of east 296 742 metres and north 5 485 144 metres, more or less;

Then heading in an irregular westerly direction to a point having coordinates of east 294 898 metres and north 5 485 296 metres, more or less;

Then heading in an irregular northeasterly direction following Indian Brook to a point having coordinates of east 296 651 metres and north 5 485 943 metres, more or less;

Then, in an irregular southerly direction, back to the point of commencement.

The above described pieces or parcels of land containing approximately 2762 hectares, more or less, as depicted in the Provincial Land Use Atlas.

The above described parcel is subject to all reservations, easements, rights-of-way as necessary and those required by law, conditions held in original Crown titles and all rights and privileges held in lands lawfully alienated from the Crown.

All bearings and coordinates being referenced to NAD 1983 MTM Zone 2.

Area 33

All that piece or parcel of land situated near West Bottom, in the electoral district of Baie Verte-Green Bay, in the Province of Newfoundland and Labrador, abutted and bound as follows:

Part A

Commencing at a point being the southeastern most corner of the within described parcel, having coordinates of east 297 299 metres and north 5 472 988 metres, more or less;

Then heading in a northwest direction to a point having coordinates of east 292 853 metres and north 5 473 777 metres, more or less;

Then heading in an irregular northeast direction to a point having coordinates of east 295 012 metres and north 5 476 135 metres, more or less;

Then heading in an irregular easterly direction to a point having coordinates of east 298 855 metres and north 5 474 824 metres, more or less;

Then, in an irregular southwest direction, back to the point of commencement.

Part B

Commencing at a point being the southern most corner of the within described parcel, having coordinates of east 293 171 metres and north 5 474 871 metres, more or less;

Then heading in an irregular northwest direction to a point having coordinates of east 291 136 metres and north 5 475 745 metres, more or less;

Then heading north to a point having coordinates of east 291 136 metres and north 5 478 828 metres, more or less;

Then heading in an irregular northeast direction to a point having coordinates of east 292 173 metres and north 5 479 523 metres, more or less;

Then heading in an irregular southeast direction to a point having coordinates of east 294 875 metres and north 5 476 169 metres, more or less;

Then, in an irregular southwest direction, back to the point of commencement.

Part C

Commencing at a point being the southeastern most corner of the within described parcel, having coordinates of east 290 606 metres and north 5 478 933 metres, more or less;

Then heading in a western direction to a point having coordinates of east 289 060 metres and north 5 479 028 metres, more or less;

Then heading in a northwest direction to a point having coordinates of east 288 722 metres and north 5 480 294 metres, more or less;

Then heading in a northeast direction to a point having coordinates of east 290 221 metres and north 5 481 249 metres, more or less;

Then heading in a southeast direction to a point having coordinates of east 291 876 metres and north 5 479 785 metres, more or less;

Then, in an irregular southwesterly direction, back to the point of commencement.

The above described pieces or parcels of land containing approximately 2610 hectares, more or less, as depicted in the Provincial Land Use Atlas.

The above described parcel is subject to all reservations, easements, rights-of-way as necessary and those required by law, conditions held in original Crown titles and all rights and privileges held in lands lawfully alienated from the Crown.

All bearings and coordinates being referenced to NAD 1983 MTM Zone 2.

Area 34

All that piece or parcel of land situated along the Deer Lake lake, in the electoral district of St. George's-Humber, in the Province of Newfoundland and Labrador, abutted and bound as follows:

Commencing at a point being the southeastern most corner of the within described parcel, having coordinates of east 369 259 metres and north 5 434 909 metres, more or less;

Then heading in a northwest direction to a point having coordinates of east 367 569 metres and north 5 436 070 metres, more or less;

Then heading in a northeast direction to a point having coordinates of east 368 762 metres and north 5 441 289 metres, more or less;

Then heading in a southeast direction to a point having coordinates of east 371 143 metres and north 5 440 923 metres, more or less;

Then, in an irregular southerly direction, along the shore of Deer Lake, back to the point of commencement.

The above described pieces or parcels of land containing approximately 1245 hectares, more or less, as depicted in the Provincial Land Use Atlas.

The above described parcel is subject to all reservations, easements, rights-of-way as necessary and those required by law, conditions held in original Crown titles and all rights and privileges held in lands lawfully alienated from the Crown.

All bearings and coordinates being referenced to NAD 1983 MTM Zone 3.

Area 35

All that piece or parcel of land situated near Wooddale, in the electoral district of Exploits, in the Province of Newfoundland and Labrador, abutted and bound as follows:

Commencing at a point being the southern most corner of the within described parcel, having coordinates of east 341 230 metres and north 5 433 436 metres, more or less;

Then heading in a northern direction to a point having coordinates of east 341 127 metres and north 5 435 527 metres, more or less;

Then heading in a northeast direction to a point having coordinates of east 343 460 metres and north 5 437 565 metres, more or less;

Then heading in a southeast direction to a point having coordinates of east 344 768 metres and north 5 436 663 metres, more or less;

Then, in a southwest direction back to the point of commencement.

The above described pieces or parcels of land containing approximately 617 hectares, more or less, as depicted in the Provincial Land Use Atlas.

The above described parcel is subject to all reservations, easements, rights-of-way as necessary and those required by law, conditions held in original Crown titles and all rights and privileges held in lands lawfully alienated from the Crown.

All bearings and coordinates being referenced to NAD 1983 MTM Zone 2.

Area 36

All that piece or parcel of land situated on Dildo Pond, in the electoral district of Lewisporte-Twillingate, in the Province of Newfoundland and Labrador, abutted and bound as follows:

Commencing at a point being on the southern boundary of the within described parcel, having coordinates of east 385 375 metres and north 5 458 019 metres, more or less;

Then heading in a northwest direction to a point having coordinates of east 384 878 metres and north 5 458 729 metres, more or less;

Then heading in an irregular northeasterly direction to a point having coordinates of east 385 206 metres and north 5 459 397 metres, more or less;

Then heading in an irregular southeast direction to a point having coordinates of east 387 065 metres and north 5 458 656 metres, more or less;

Then, in a southwest direction along the shoreline back to the point of commencement.

The above described pieces or parcels of land containing approximately 142 hectares, more or less, as depicted in the Provincial Land Use Atlas.

The above described parcel is subject to all reservations, easements, rights-of-way as necessary and those required by law, conditions held in original Crown titles and all rights and privileges held in lands lawfully alienated from the Crown.

All bearings and coordinates being referenced to NAD 1983 MTM Zone 2.

Area 37

All that piece or parcel of land situated near Grants, in the electoral district of Terra Nova, in the Province of Newfoundland and Labrador, abutted and bound as follows:

Commencing at a point being on the southern boundary of the within described parcel, having coordinates of east 222 241 metres and north 5 398 716 metres, more or less;

Then heading in an irregular northwest direction to a point having coordinates of east 219 452 metres and north 5 399 555 metres, more or less;

Then heading in an irregular northeast direction to a point having coordinates of east 222 909 metres and north 5 400 206 metres, more or less;

Then, in an irregular southwest direction along a river back to the point of commencement.

The above described pieces or parcels of land containing approximately 223 hectares, more or less, as depicted in the Provincial Land Use Atlas.

The above described parcel is subject to all reservations, easements, rights-of-way as necessary and those required by law, conditions held in original Crown titles and all rights and privileges held in lands lawfully alienated from the Crown.

All bearings and coordinates being referenced to NAD 1983 MTM Zone 1.

Area 38

All that piece or parcel of land situated near Little Catalina, in the electoral district of Bonavista, in the Province of Newfoundland and Labrador, abutted and bound as follows:

Commencing at a point being on the southern boundary of the within described parcel, having coordinates of east 298 171 metres and north 5 380 411 metres, more or less;

Then heading in an irregular westerly direction to a point having coordinates of east 297 771 metres and north 5 380 431 metres, more or less;

Then heading in a northern direction to a point having coordinates of east 297 263 metres and north 5 382 061 metres, more or less;

Then heading in a northeast direction to a point having coordinates of east 298 069 metres and north 5 383 323 metres, more or less;

Then heading in a southern direction to a point having coordinates of east 298 376 metres and north 5 381 831 metres, more or less;

Then heading in an irregular southern direction to a point having coordinates of east 298 143 metres and north 5 380 358 metres, more or less;

Then, in a western direction back to the point of commencement.

The above described pieces or parcels of land containing approximately 155 hectares, more or less, as depicted in the Provincial Land Use Atlas.

The above described parcel is subject to all reservations, easements, rights-of-way as necessary and those required by law, conditions held in original Crown titles and all rights and privileges held in lands lawfully alienated from the Crown.

All bearings and coordinates being referenced to NAD 1983 MTM Zone 1.

Area 39

All that piece or parcel of land situated on Wabush Lake, in the electoral district of Labrador West, in the Province of Newfoundland and Labrador, abutted and bound as follows:

Commencing at a point being the most northwestern point of the within described parcel, being on the shoreline of Wabush Lake, having coordinates of east 349 145 metres and north 5 874 246 metres, more or less;

Then heading east to a point having coordinates of east 350 454 metres and north 5 874 258 metres, more or less;

Then heading in an irregular southern direction to a point having coordinates of east 351 480 metres and north 5 870 754 metres, more or less;

Then heading in an irregular southwestern direction to a point having coordinates of east 350 386 metres and north 5 869 683 metres, more or less;

Then heading in an irregular westerly direction to a point having coordinates of east 349 368 metres and north 5 870 113 metres, more or less;

Then, in an irregular northerly direction, along the river bank and the shoreline of Wabush Lake, back to the point of commencement.

The above described pieces or parcels of land containing approximately 515 hectares, more or less, as depicted in the Provincial Land Use Atlas.

The above described parcel is subject to all reservations, easements, rights-of-way as necessary and those required by law, conditions held in original Crown titles and all rights and privileges held in lands lawfully alienated from the Crown.

All bearings and coordinates being referenced to NAD 1983 MTM Zone 6.

Area 40

All that piece or parcel of land situated at Happy Valley-Goose Bay, in the electoral district of Lake Melville, in the Province of Newfoundland and Labrador, abutted and bound as follows:

Part A

Commencing at a point being the most westerly point of the within described parcel, on the south bank of Churchill River, having coordinates of east 373 589 metres and north 5 903 563 metres, more or less;

Then heading in an irregular easterly direction, along the bank of said river, to a point having coordinates of east 381 747 metres and north 5 904 660 metres, more or less;

Then heading in an irregular southern direction to a point having coordinates of east 381 804 metres and north 5 904 011 metres, more or less;

Then heading in a western direction to a point having coordinates of east 378 222 metres and north 5 902 894 metres, more or less;

Then, in an irregular westerly direction back to the point of commencement.

Part B

Commencing at a point in the within described parcel, on the south bank of Churchill River, having coordinates of east 381 814 metres and north 5 904 586 metres, more or less;

Then heading in an irregular easterly direction, along the bank of said river, to a point, being the intersection with the west bank of the Traverspine River, having coordinates of east 386 164 metres and north 5 905 688 metres, more or less;

Then heading in an irregular southern direction, along the west bank of said river, to a point having coordinates of east 387 488 metres and north 5 904 709 metres, more or less;

Then heading in an irregular southwestern direction to a point having coordinates east 385 405 metres and north 5 903 882 metres, more or less;

Then heading in an irregular western direction to a point having coordinates of east 381 788 metres and north 5 903 973 metres, more or less;

Then, in an irregular northerly direction back to the point of commencement.

Part C

Commencing at a point in the within described parcel, on the south bank of Churchill River intersecting with the east bank of Traverspine River, having coordinates of east 386 411 metres and north 5 905 676 metres, more or less;

Then heading in an irregular northeast direction, along the bank of the Churchill River, to a point, being the intersection with the west bank of a river, having coordinates of east 393 593 metres and north 5 910 698 metres, more or less;

Then heading in an irregular southern direction, along the west bank of said river and along the shoreline of Mud Lake, to a point having coordinates of east 395 137 metres and north 5 906 885 metres, more or less;

Then heading in an irregular southwest direction to a point, on the east bank of Traverspine River, having coordinates of east 388 323 metres and north 5 904 329 metres, more or less;

Then, in an irregular northwest direction, along the east bank of said river, back to the point of commencement.

The above described pieces or parcels of land containing approximately 3020 hectares, more or less, as depicted in the Provincial Land Use Atlas.

The above described parcel is subject to all reservations, easements, rights-of-way as necessary and those required by law, conditions held in original Crown titles and all rights and privileges held in lands lawfully alienated from the Crown.

All bearings and coordinates being referenced to NAD 1983 MTM Zone 4.

Area 41

All that piece or parcel of land situated at L'Anse au Clair, in the electoral district of Cartwright-L'Anse au Clair, in the Province of Newfoundland and Labrador, abutted and bound as follows:

Commencing at a point on the western boundary of the within described parcel having coordinates of east 228 558 metres and north 5 698 899 metres, more or less;

Then heading in a northern direction to a point having coordinates of east 228 448 metres and north 5 699 455 metres, more or less;

Then heading in an irregular northerly direction to a point having coordinates of east 228 725 metres and north 5 700 206 metres, more or less;

Then heading in an irregular easterly direction to a point having coordinates of east 229 654 metres and north 5 700 268 metres, more or less;

Then heading in an irregular southeasterly direction to a point having coordinates of east 230 017 metres and north 5 699 527 metres, more or less;

Then heading in an irregular southeast direction to a point having coordinates of east 230 093 metres and north 5 698 814 metres, more or less;

Then, in an irregular westerly direction back to the point of commencement.

The above described pieces or parcels of land containing approximately 205 hectares, more or less, as depicted in the Provincial Land Use Atlas.

The above described parcel is subject to all reservations, easements, rights-of-way as necessary and those required by law, conditions held in original Crown titles and all rights and privileges held in lands lawfully alienated from the Crown.

All bearings and coordinates being referenced to NAD 1983 MTM Zone 2.

Area 42

All that piece or parcel of land situated at Happy Valley-Goose Bay, in the electoral district of Lake Melville, in the Province of Newfoundland and Labrador, abutted and bound as follows:

Part A

Commencing at a point being the most southwesterly point of the within described parcel, on the south bank of Goose River, having coordinates of east 368 726 metres and north 5 912 814 metres, more or less;

Then heading in a northeast direction, following the sinuosities of said river, to a point having coordinates of east 372 834 metres and north 5 916 149 metres, more or less;

Then heading in a southeast direction to a point having coordinates of east 372 942 metres and north 5 915 885 metres, more or less;

Then heading in an irregular western direction to a point having coordinates of east 370 249 metres and north 5 915 204 metres, more or less;

Then heading in southwest direction to a point having coordinates of east 369 573 metres and north 5 913 144 metres, more or less;

Then, in a southwest direction back to the point of commencement.

Part B

Commencing at a point in the within described parcel, on the north bank of Goose River, having coordinates of east 370 719 metres and north 5 916 078 metres, more or less;

Then heading in an irregular northerly direction to a point having coordinates of east 371 182 metres and north 5 917 421 metres, more or less;

Then heading in a northeast direction to a point having coordinates of east 373 443 metres and north 5 918 983 metres, more or less;

Then heading in an irregular northeast direction, to North West River Road, to a point having coordinates of east 376 584 metres and north 5 919 616 metres, more or less;

Then, following said road south to the north bank of Goose River, to a point having coordinates of east 376 700 metres and north 5 918 367 metres, more or less:

Then, in an irregular southwest direction, partially following the sinuosities of Goose River, back to the point of commencement.

Part C

Commencing at a point in the within described parcel, west of North West River Road, having coordinates of east 376 136 metres and north 5 917 693 metres, more or less;

Then heading in an irregular northwest direction, to the south bank of Goose River, to a point having coordinates of east 375 799 metres and north 5 917 915 metres, more or less;

Then heading in an irregular northeast direction, following the sinuosities of said river, to a point having coordinates of east 376 489 metres and north 5 918 215 metres, more or less;

Then, in a southwest direction back to the point of commencement.

Part D

Commencing at a point in the within described parcel, on the north bank of Goose River, having coordinates of east 377 604 metres and north 5 919 025 metres, more or less;

Then heading in a northerly direction to a point having coordinates of east 377 401 metres and north 5 920 754 metres, more or less;

Then heading east, to the shoreline of Gosling Lake, to a point having coordinates of east 377 753 metres and north 5 920 819 metres, more or less;

Then heading in a southeast direction, following the shoreline of said lake, to a point having coordinates of east 379 006 metres and north 5 920 424 metres, more or less;

Then heading in an irregular southeast direction to a point having coordinates of east 380 660 metres and north 5 918 971 metres, more or less;

Then heading in an irregular southwest direction to a point on the north bank of Goose River, having coordinates of east 380 004 metres and north 5 917 238 metres, more or less;

Then heading in a northwest direction, following the sinuosities of Goose River, back to the point of commencement.

The above described pieces or parcels of land containing approximately 1723 hectares, more or less, as depicted in the Provincial Land Use Atlas.

The above described parcel is subject to all reservations, easements, rights-of-way as necessary and those required by law, conditions held in original Crown titles and all rights and privileges held in lands lawfully alienated from the Crown.

All bearings and coordinates being referenced to NAD 1983 MTM Zone 4.

Area 43

All that piece or parcel of land situated at Happy Valley-Goose Bay, in the electoral district of Lake Melville, in the Province of Newfoundland and Labrador, abutted and bound as follows:

Commencing at a point being the most southwesterly point of the within described parcel, on the north bank of Churchill River, having coordinates of east 387 283 metres and north 5 909 129 metres, more or less;

Then heading in a northwest direction to a point having coordinates of east 386 467 metres and north 5 910 041 metres, more or less;

Then heading in a northeast direction to a point having coordinates of east 387 189 metres and north 5 910 668 metres, more or less;

Then heading in an eastern direction to a point having coordinates of east 388 840 metres and north 5 911 124 metres, more or less;

Then heading in an irregular eastern direction to a point having coordinates of east 390 704 metres and north 5 910 894 metres, more or less;

Then heading in a southeast direction, to Mud Lake Road, to a point having coordinates of east 390 830 metres and north 5 910 392 metres, more or less;

Then, in an irregular southwest direction, following Mud Lake Road, back to the point of commencement.

The above described pieces or parcels of land containing approximately 451 hectares, more or less, as depicted in the Provincial Land Use Atlas.

The above described parcel is subject to all reservations, easements, rights-of-way as necessary and those required by law, conditions held in original Crown titles and all rights and privileges held in lands lawfully alienated from the Crown.

All bearings and coordinates being referenced to NAD 1983 MTM Zone 4.

©Queen's Printer

Index

PART I

Corporations Act - Notices.....	351
Lands Act - Notices.....	358
Motor Carrier Act - Notice.....	359
Quieting of Titles Act - Notice.....	359
Urban and Rural Planning Act, 2000 – Notices	357
Trustee Act – Notice	364

PART II

CONTINUING INDEX OF SUBORDINATE LEGISLATION

Title of Act and Subordinate Legislation made thereunder	CNLR or NL Reg.	Amendment	NL Gazette Date & Page No.
Lands Act			
Agricultural Land Reserve Order (Amendment)	NLR 100/17	Amends NLR 44/17 Sch. Amdt.	Nov 17/17 p. 1447

The Newfoundland and Labrador Gazette is published from the Office of the Queen's Printer.

Copy for publication must be received by **Friday, 4:30 p.m.**, seven days before publication date to ensure inclusion in next issue. Advertisements must be submitted in either PDF format or as a MSWord file. When this is not possible, advertisements must be either, typewritten or printed legibly, separate from covering letter. Number of insertions required must be stated and the names of all signing officers typewritten or printed.

Copy may be mailed to the address below, faxed to (709) 729-1900 or emailed to queensprinter@gov.nl.ca. Subscription rate for *The Newfoundland and Labrador Gazette* is \$144.38 for 52 weeks plus 15% HST (\$166.04). Weekly issues, \$3.47 per copy, plus 15% HST (\$3.99) payable in advance.

All cheques, money orders, etc., should be made payable to THE NEWFOUNDLAND EXCHEQUER ACCOUNT and all correspondence should be addressed to: Office of the Queen's Printer, P. O. Box 8700, Ground Floor, East Block, Confederation Building, St. John's, NL A1B 4J6, Telephone: (709) 729-3649, Fax: (709) 729-1900.

Web Site: <http://www.servicenl.gov.nl.ca/printer/index.html>

The Newfoundland and Labrador Gazette
Advertising Rates
Prices effective July 1, 2016

Notices	Rate	15%	HST Total
Lands Act - Notice of Intent - 1 week	\$31.13	\$4.67	\$35.80
Motor Carrier Act - Notice - 1 week	\$39.90	\$5.99	\$45.89
Trustee Act - Estate Notice - 1 week	\$34.65	\$5.20	\$39.85
Trustee Act - Estate Notice - 2 weeks	\$62.37	\$9.36	\$71.73
Trustee Act - Estate Notice - 3 weeks	\$91.25	\$13.69	\$104.94
Trustee Act - Estate Notice - 4 weeks	\$118.97	\$17.85	\$136.82

All other public notices required by law to be published in *The Newfoundland and Labrador Gazette*, eg., Corporations Act, Municipalities Act, Quieting of Titles Act, Urban and Rural Planning Act, etc., are priced according to size: for Single Column \$3.47 per cm or Double Column \$6.93 per cm, plus 15% HST.

For quotes please contact the Office of the Queen's Printer queensprinter@gov.nl.ca

Government Information Product
Publication Rate Mail
G.S.T. # R107442683