



# THE NEWFOUNDLAND AND LABRADOR GAZETTE

PART I  
PUBLISHED BY AUTHORITY

Vol. 93

ST. JOHN'S, FRIDAY, APRIL 6, 2018

No. 14

## MINERAL ACT

### NOTICE

Published in accordance with section 62 of CNLR 1143/96 under the *Mineral Act*, RSNL1990 cM-12 as amended.

Mineral rights to the following mineral licenses have reverted to the Crown:

Mineral License 024317M  
Held by Walsh, Denis F.  
Situates near Lemottes Lake, Central NL  
On map sheet 02D/13

Mineral License 024319M  
Held by Altius Resources Inc.  
Situates near Island Point, Central NL  
On map sheet 12A/10

Mineral License 024322M  
Held by Crocker, James Richard  
Situates near Caribou Lake, Central NL  
On map sheet 02D/11, 02D/10

Mineral License 024330M  
Held by Walsh, Denis F.  
Situates near Lemottes Lake, Central NL  
On map sheet 02D/13

Mineral License 024341M  
Held by Wall, Jeff  
Situates near Fox Pond Area, Central NL  
On map sheet 02E/02

Mineral License 024349M  
Held by Mercer, William  
Situates near Peters River, Central NL  
On map sheet 02E/04

Mineral License 024350M  
Held by Wall, Jeff  
Situates near Exploits River, Central NL  
On map sheet 02D/13

Mineral License 024351M  
Held by Mercer, William  
Situates near Peters River, Central NL  
On map sheet 02E/04

Mineral License 024355M  
Held by Mercer, William  
Situates near Peters River, Central NL  
On map sheet 02E/04

Mineral License 024356M  
Held by Thomas, David G.  
Situates near Garia Brook, Southern NL  
On map sheet 11O/16, 11O/15

THE NEWFOUNDLAND AND LABRADOR GAZETTE

April 6, 2018

Mineral License Held by Situates near On map sheet	024357M Wall, Jeff Eddies Pond, Southern NL 11O/15	Mineral License Held by Situates near On map sheet	024395M Thomas, David G. Shimmy Cove, Central NL 02E/12
Mineral License Held by Situates near On map sheet	024358M Walsh, Denis F. Lemottes Lake, Central NL 02D/13	Mineral License Held by Situates near On map sheet	024396M Noel, Nathaniel Sandy Harbour River, Burin Peninsula 01M/16, 01M/09
Mineral License Held by Situates near On map sheet	024360M Hicks, David Exploits River, Central NL 12A/16	Mineral License Held by Situates near On map sheet	024397M Thomas, David G. Red Cliff Pond, Baie Verte Peninsula 02E/13
Mineral License Held by Situates near On map sheet	024361M Hicks, Darrin Selbys Pond, Central NL 12A/10	Mineral License Held by Situates near On map sheet	024401M Thomas, David G. Shoulder Blade Lake, Central NL 12A/09
Mineral License Held by Situates near On map sheet	024362M Stares, Shane Burnt Bay, Central NL 02E/06	Mineral License Held by Situates near On map sheet	024404M Lewis, Nigel Lake Douglass, Central NL 12A/07
Mineral License Held by Situates near On map sheet	024363M Stares, Shane Browns Arm, Central NL 02E/06	Mineral License Held by Situates near On map sheet	024405M Guinchard, Wayde Selbys Pond, Central NL 12A/10
Mineral License Held by Situates near On map sheet	024364M Stares, Shane Stanhope Cove, Central NL 02E/06	Mineral License Held by Situates near On map sheet	024411M Thomas, David G. Shoulder Blade Lake, Central NL 12A/09
Mineral License Held by Situates near On map sheet	024366M Hewitt, Harold Traytown, Eastern NL 02D/09, 02C/12	Mineral License Held by Situates near On map sheet	024412M Thomas, David G. Shoulder Blade Lake, Central NL 12A/09
Mineral License Held by Situates near On map sheet	024367M Thomas, David G. Garia Brook, Southern NL 11O/16, 11O/15	Mineral License Held by Situates near On map sheet	024413M Hussey, Leo Brinks Pond, Central NL 02E/02
Mineral License Held by Situates near On map sheet	024368M Keats, Fred Burnt Bay, Central NL 02E/07, 02E/06	Mineral License Held by Situates near On map sheet	024417M Thomas, David G. Otter Island, Central NL 02E/12
Mineral License Held by Situates near On map sheet	024371M Rogers, Peter St Augustin River Area 13B/11	Mineral License Held by Situates near On map sheet	024418M Noel, Nathaniel Upper Humber River Area, Western NL 12H/11
Mineral License Held by Situates near On map sheet	024377M Lannon, George West Stony Brook, Central NL 02D/13		

THE NEWFOUNDLAND AND LABRADOR GAZETTE  
April 6, 2018

Mineral License Held by Situates near On map sheet	024421M Thomas, David G. Noel Pauls Brook Area, Central NL 12A/09	Mineral License Held by Situates near On map sheet	024517M Courage, Dean Riviere Bujeault 13A/03
Mineral License Held by Situates near On map sheet	024437M Stares, Shane Liverpool Brook, Western NL 12G/08	Mineral License Held by Situates near On map sheet	024521M Rowell, Brian Brinks Pond, Central NL 02E/02
Mineral License Held by Situates near On map sheet	024439M Cull, Wayne Kellys Pond, Central NL 12A/10	Mineral License Held by Situates near On map sheet	024522M McNeill, Paul Rattle Brook, White Bay 12H/15
Mineral License Held by Situates near On map sheet	024440M Cooper, Kevin Lost Pond, Central NL 12A/10	Mineral License Held by Situates near On map sheet	024525M Keats, Wesley Nickeys Nose Cove, Central NL 02E/12
Mineral License Held by Situates near On map sheet	024450M Lannon, George Penny Cove, Baie Verte Peninsula 12H/16	Mineral License Held by Situates near On map sheet	024526M Keats, Wesley Nickeys Nose Cove, Central NL 02E/12
Mineral License Held by Situates near On map sheet	024455M Budgell, Evan Red Indian Lake Area, Central NL 12A/10	Mineral License Held by Situates near On map sheet	024527M Keats, Wesley Nickeys Nose Cove, Central NL 02E/12
Mineral License Held by Situates near On map sheet	024508M Rowell, Brian Long Pond, Central NL 02E/02	Mineral License Held by Situates near On map sheet	024531M Lawrence, Gordon Island Pond, Central NL 02E/02
Mineral License Held by Situates near On map sheet	024511M Chan, Lai Lai Apsey Cove, Baie Verte 12H/16	Mineral License Held by Situates near On map sheet	024532M Crocker, Calvin M. Taylors Pond, White Bay 12H/11, 12H/10
Mineral License Held by Situates near On map sheet	024512M Chan, Lai Lai Apsey Cove, Baie Verte 12H/16	Mineral License Held by Situates near On map sheet	024536M Flight, Jason C. A. Kingurutik River 14E/01
Mineral License Held by Situates near On map sheet	024513M Chan, Lai Lai Powder House Pond, Baie Verte Peninsula 12H/16	Mineral License Held by Situates near On map sheet	024538M Rowell, Brian Long Pond, Central NL 02E/02
Mineral License Held by Situates near On map sheet	024514M Keats, Wesley Silverdale, Central NL 02E/12	Mineral License Held by Situates near On map sheet	024541M Crocker, Calvin M. Taylors Brook Area, White Bay 12H/11, 12H/10
Mineral License Held by Situates near On map sheet	024515M Martin, Jeffrey Eagle River Area 13H/05	Mineral License Held by Situates near On map sheet	024545M Fancey, Derrick Second Pond, Central NL 02E/02

Mineral License 024550M  
Held by Hicks, David  
Situates near Noel Pauls Brook, Central NL  
On map sheet 12A/09

Mineral License 024553M  
Held by Squires, Stanley H.B.  
Situates near Costigan Lake, Central NL  
On map sheet 12A/11

Mineral License 024555M  
Held by Rideout, James  
Situates near Taylors Pond, White Bay  
On map sheet 12H/11, 12H/10

A portion of license 024572M  
Held by Guinchard, Wayde  
Situates near Northwest Gander River,  
Central NL  
On map sheet 02D/11  
more particularly described in an application on file at  
Department of Natural Resources.

A portion of license 024575M  
Held by Guinchard, Wayde  
Situates near Northwest Gander River,  
Central NL  
On map sheet 02D/11  
more particularly described in an application on file at  
Department of Natural Resources.

Mineral License 024582M  
Held by Martin, Cameron  
Situates near Webber Brook, Central NL  
On map sheet 02D/11

Mineral License 024583M  
Held by Martin, Cameron  
Situates near Webber Brook, Central NL  
On map sheet 02D/11

Mineral License 024584M  
Held by Rogers, Josephine  
Situates near Northwest Gander River,  
Central NL  
On map sheet 02D/11

Mineral License 024588M  
Held by Hewitt, Harold  
Situates near Traytown, Eastern NL  
On map sheet 02D/09, 02C/12

Mineral License 024589M  
Held by Budgell, Evan  
Situates near Miguels Lake, Central NL  
On map sheet 02D/12, 02D/11

Mineral License 024590M  
Held by Budgell, Evan  
Situates near Rolling Pond, Central NL  
On map sheet 02D/11

Mineral License 024591M  
Held by Taylor, Ronald  
Situates near Bobbys Pond Area, Central NL  
On map sheet 12A/10

Mineral License 024592M  
Held by Edmunds, Ricky  
Situates near Crooks Lake  
On map sheet 13B/11

Mineral License 024593M  
Held by Edmunds, Ricky  
Situates near Crooks Lake  
On map sheet 13B/11

Mineral License 024594M  
Held by Edmunds, Ricky  
Situates near Crooks Lake  
On map sheet 13B/11

Mineral License 024595M  
Held by Edmunds, Ricky  
Situates near Crooks Lake  
On map sheet 13B/12

Mineral License 024596M  
Held by Edmunds, Ricky  
Situates near Crooks Lake  
On map sheet 13B/12

Mineral License 024597M  
Held by Hicks, Cameron  
Situates near Kidney Pond, Baie Verte Peninsula  
On map sheet 12H/09

The lands covered by this notice except for the lands within Exempt Mineral Lands, the Exempt Mineral Lands being described in CNLR 1143/96 and NLR 71/98, 104/98, 97/00, 36/01, 31/04, 78/06, 8/08, 28/09 and 5/13 and outlined on 1:50 000 scale digital maps maintained by the Department of Natural Resources, will be open for staking after the hour of 9:00 a.m. on the 32<sup>nd</sup> clear day after the date of this publication.

DEPARTMENT OF NATURAL RESOURCES  
Justin Lake, Manager - Mineral Rights

File #'s 775: 5946, 5947, 5952, 5961, 5971, 5980, 5981, 5982, 5986, 5987, 5988, 5989, 5991, 5992, 5993, 5994, 5995, 5996, 5997, 5998, 6001, 6007, 6031, 6032, 6033, 6037, 6040, 6041, 6047, 6048, 6049, 6053, 6054, 6057, 6068, 6070, 6071, 6076, 6079, 6083, 6086, 6087, 6088, 6089, 6090, 6092, 6096, 6097, 6100, 6101, 6102, 6106, 6107, 6111, 6113, 6116, 6120, 6124, 6127, 6129, 6146, 6149, 6156, 6157, 6158, 6162, 6163, 6164, 6165, 6166, 6167, 6168, 6169, 6170, 6171.

Apr 6

**QUIETING OF TITLES ACT**

**2018 06G 0022  
IN THE SUPREME COURT OF  
NEWFOUNDLAND AND LABRADOR  
TRIAL DIVISION (GENERAL)**

NOTICE OF APPLICATION under the *Quieting of Titles Act*, RSNL1990 cQ-3.

Notice is hereby given to all parties that Curtis Phillips, of the Town of Bonavista, in the District of Bonavista, in the Province of Newfoundland and Labrador, has applied to the Supreme Court, Trial Division, Grand Bank, to have title to all that piece or parcel of property situate at the Town of Bonavista, in the Province of Newfoundland and Labrador, which property is more particularly described in Schedule "A" hereto annexed and shown in Schedule "B" hereto annexed.

ALL BEARINGS aforementioned, for which CURTIS PHILLIPS claims to be the owner investigated and for a Declaration that he is the absolute owner in fee simple in possession and the said CURTIS PHILLIPS has been ordered to public Notice of Application as required by the above named Act.

All persons having title adverse to the said title claimed by the said CURTIS PHILLIPS shall file in the Registry of the Supreme Court of Newfoundland and Labrador, Trial Division, Grand Bank, particulars of such adverse claim and serve the same together with an Affidavit verifying same on the undersigned Solicitors for the Petitioner on or before the 6<sup>th</sup> day of May, 2018, after which date no party having any claim shall be permitted to file the same or to be heard except by special leave of the Court and subject to such conditions as the Court may deem just.

All such adverse claims shall be investigated then in such manner as the Supreme Court of Newfoundland and Labrador, Trial Division, Grand Bank, may direct.

DATED AT Clarenville, in the Province of Newfoundland Labrador, this 15<sup>th</sup> day of January, 2018.

MILLS PITTMAN & TWYNE  
Solicitors for the Applicant  
PER: Gregory J. French

ADDRESS FOR SERVICE:  
111 Manitoba Drive  
Suite 201  
Clarenville, NL A5A 1K2

Tel: (709) 466-2641  
Fax: (709) 466-7109

**SCHEDULE "A"**

**W. HARRIS SURVEYS LTD  
NEWFOUNDLAND AND SURVEYORS**

P.O. Box 142  
Bonavista, NL  
A0C 1B0

Phone No. 468-7482  
Fax No. 468-7482

**DESCRIPTION**

All that piece or parcel of land situate and being at Bonavista, in the Electoral District of Bonavista, in the Province of Newfoundland and Labrador, Canada, abutted and bounded as follows, that is to say:

Beginning at a point in the northwestern limit of Cape Shore Road, the said point having NAD 83 Co-ordinates of N5392 261.621 metres and E297 104.232 metres of the Modified 3° Transverse Mercator Grid Projection for the Province of Newfoundland.

THENCE running by land of Howard Hicks north fifty three degrees forty nine minutes zero seconds west twenty seven decimal zero eight three metres.

THENCE running by land of Janet Durdle north thirty two degrees fifty minutes nine seconds east twelve decimal zero two eight metres.

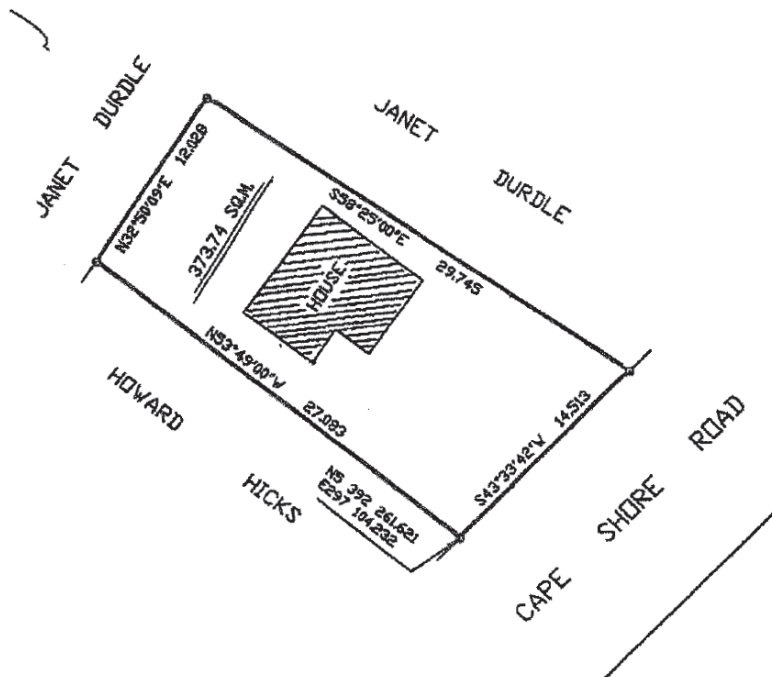
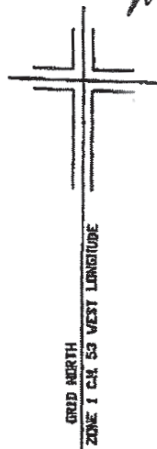
AND THENCE south fifty eight degrees twenty five minutes zero seconds east twenty nine decimal seven four five metres.

THENCE running along the said northwestern limit of Cape Shore Road south forty three degrees thirty three minutes west fourteen decimal five one three metres, more or less, to the point of beginning and being more particularly shown and delineated on the diagram annexed hereto.

CONTAINING an area of 373.74 sq. metres, more or less.

All bearings being referred to Grid North of the above mentioned Projection.

SCHEDULE "B"



LEGEND

- IRON PIN \_\_\_\_\_
- EXISTING IRON PIN \_\_\_\_\_
- CONTROL MON. \_\_\_\_\_
- PROPERTY DEALT WITH \_\_\_\_\_
- FENCE LINES \_\_\_\_\_
- CAPPED IRON PIN \_\_\_\_\_

- o
- E.I.P.
- A
- \_\_\_\_\_
- x
- p

CO-ORDINATES BASED ON NAD 83  
 SCALE FACTOR USED IS

THIS PLAN AND THE ACCOMPANYING DESCRIPTION OF  
 V. HARRIS SURVEYS LTD. FORM AN INTEGRAL PART OF THE  
 WHOLE AND ARE NOT SEPARABLE.

REFERENCE MONUMENTS

- 6122-1972 NS 392 172.280  
E296 519.849
- 79G2530 NS 392 019.378  
E296 785.475

ALL DISTANCES ARE HORIZONTAL  
 GROUND AND IN METERS

© WINSTON HARRIS, NEWFOUNDLAND LAND SURVEYOR 2027  
 UNAUTHORIZED USE, ALTERATION OR REPRODUCTION OF  
 THIS SURVEY PLAN AND DESCRIPTION IS PROHIBITED  
 BY LAW AS OUTLINED IN THE COPYRIGHT ACT. HOWEVER,  
 USE AND REPRODUCTION THEREOF BY OR ON BEHALF  
 OF THE PERSON TO WHOM THIS SURVEY IS CERTIFIED IS  
 PERMITTED, PROVIDED THAT NO ALTERATIONS WHATSOEVER  
 ARE MADE THEREIN.



W. HARRIS SURVEYS LTD. NEWFOUNDLAND LAND SURVEYORS BONAVISTA NL				
P.O. BOX 142				
CURTIS PHILLIPS BONAVISTA NL				
161 CAPE SHORE ROAD				
SCALE	DATE	DRAWN BY	CHECKED BY	JOB NO.
1:300	DEC.6/2017	WH		5137

**URBAN AND RURAL PLANNING ACT, 2000**

**NOTICE OF REGISTRATION  
TOWN OF ELLISTON  
MUNICIPAL PLAN AMENDMENT  
AND DEVELOPMENT REGULATIONS**

TAKE NOTICE that the TOWN OF ELLISTON Municipal Plan Amendment No. 2 and Development Regulations Amendment No. 2, adopted on the 11<sup>th</sup> day of January 2018, have been registered by the Minister of Municipal Affairs and Environment.

These amendments add “single dwelling” as a Discretionary Use in the Community Services zone.

These amendments come into effect on the day that this notice is published in *The Newfoundland and Labrador Gazette*. Anyone who wishes to inspect a copy of the documents may do so at the Elliston Town Office during normal business hours.

TOWN OF ELLISTON  
Donna Chaulk, Town Clerk

Apr 6

**NOTICE OF REGISTRATION  
TOWN OF PARADISE  
MUNICIPAL PLAN AND  
DEVELOPMENT REGULATIONS 2016**

TAKE NOTICE that the TOWN OF PARADISE Municipal Plan and Development Regulations 2016, adopted on the 11<sup>th</sup> day of July 2017 and approved, as amended on the 19<sup>th</sup> day of September 2017, have been registered by the Minister of Municipal Affairs and Environment.

In general terms, the Municipal Plan and Development Regulations 2016 introduces a new municipal land use plan and accompanying regulations, comprised of text and maps, for the TOWN OF PARADISE.

Created through a comprehensive public review process known as “Imagine Paradise”, the new Municipal Plan contains a vision for Paradise based on the key themes of healthy livable neighbourhoods, quality connected design, economic prosperity, environmental quality, investment in transportation and services and regional cooperation.

The TOWN OF PARADISE Municipal Plan and Development Regulations 2016 come into effect on the day that this notice is published in *The Newfoundland and Labrador Gazette*, and are now legally binding on the Town and all persons. Anyone wishing to inspect a copy of the TOWN OF PARADISE Municipal Plan and Development Regulations 2016 may do so at the Town Hall, 28 McNamara Drive, Paradise, during normal working hours. A digital copy of the documents may be found on the Town of Paradise website at [www.paradise.ca](http://www.paradise.ca).

TOWN OF PARADISE  
Alton Glenn, MCIP

Director, Planning and Protective Services

Apr 6

**NOTICE OF REGISTRATION  
TOWN OF PORTUGAL COVE SOUTH  
MUNICIPAL PLAN AND  
DEVELOPMENT REGULATIONS 2017**

TAKE NOTICE that the TOWN OF PORTUGAL COVE SOUTH Municipal Plan and Development Regulations 2017 adopted on the 22<sup>nd</sup> day of August 2017 and approved on the 19<sup>th</sup> day of December 2017 have been registered by the Minister of Municipal Affairs and Environment.

THAT the TOWN OF PORTUGAL COVE Municipal Plan and Development Regulations, 2017 come into effect on the day that this notice is published in *The Newfoundland and Labrador Gazette*. Anyone who wishes to inspect a copy of these documents may do so at the Town Office during normal working hours.

TOWN OF PORTUGAL COVE SOUTH  
Ida Perry, Town Clerk

Apr 6

**LANDS ACT**

**NOTICE OF INTENT, SECTION 7  
LANDS ACT, SNL1991 c36 AS AMENDED**

NOTICE IS HEREBY given that an application has been made to the Department of Fisheries and Land Resources, Agriculture and Lands Branch, to acquire title, pursuant to section 7(2) (d) of the said Act, to that piece of Crown lands situated within 15 metres of the waters of Coles Pond for the purpose of a boat house and wharf.

The application may intrude on the 15 metre shoreline of the above mentioned water body(s) in various locations. For a detailed map, please see website: <http://www.ma.gov.nl.ca/lands/sec7notifications.html>.

Please note: It may take up to five (5) days from the date of application for details to appear on the website.

Any person wishing to object to the application must file the objection in writing with reasons, within 30 days from the publication of notice on the Department of Fisheries and Land Resources website, Crown Lands, <http://www.ma.gov.nl.ca/lands/index.html>, to the Minister of Fisheries and Land Resources by mail or email to the nearest Regional Lands Office:

- Eastern Regional Lands Office, P.O. Box 8700, Howley Building, Higgins Line, St. John's, NL, A1B 4J6  
Email: [easternlandsoffice@gov.nl.ca](mailto:easternlandsoffice@gov.nl.ca)



- Central Regional Lands Office, P.O. Box 2222, Gander, NL, A1V 2N9 Email: [centrallandsoffice@gov.nl.ca](mailto:centrallandsoffice@gov.nl.ca)

- Western Regional Lands Office, P.O. Box 2006, Sir Richard Squires Building, Corner Brook, NL, A2H 6J8 Email: [westernregionlands@gov.nl.ca](mailto:westernregionlands@gov.nl.ca)

- Labrador Regional Lands Office, P.O. Box 3014, Station "B", Happy Valley-Goose Bay, NL, A0P 1E0 Email: [labradorlandsoffice@gov.nl.ca](mailto:labradorlandsoffice@gov.nl.ca)

(DISCLAIMER: *The Newfoundland and Labrador Gazette* publishes a NOTICE OF INTENT as received from the Applicant and takes no responsibility for errors or omissions in the property being more particularly described.)

Apr 6

---

**NOTICE OF INTENT, SECTION 7  
LANDS ACT, SNL1991 c36 AS AMENDED**

NOTICE IS HEREBY given that an application has been made to the Department of Fisheries and Land Resources, Agriculture and Lands Branch, to acquire title, pursuant to section 7(2) (d) of the said Act, to that piece of Crown lands situated within 15 metres of the waters of Halls Bay for the purpose of a Crown land and a wharf/slipway/stage.

The application may intrude on the 15 metre shoreline of the above mentioned water body(s) in various locations. For a detailed map, please see website: <http://www.ma.gov.nl.ca/lands/sec7notifications.html>.

Please note: It may take up to five (5) days from the date of application for details to appear on the website.

Any person wishing to object to the application must file the objection in writing with reasons, within 30 days from the publication of notice on the Department of Fisheries and Land Resources website, Crown Lands, <http://www.ma.gov.nl.ca/lands/index.html>, to the Minister of Fisheries and Land Resources by mail or email to the nearest Regional Lands Office:

- Eastern Regional Lands Office, P.O. Box 8700, Howley Building, Higgins Line, St. John's, NL, A1B 4J6 Email: [easternlandsoffice@gov.nl.ca](mailto:easternlandsoffice@gov.nl.ca)

- Central Regional Lands Office, P.O. Box 2222, Gander, NL, A1V 2N9 Email: [centrallandsoffice@gov.nl.ca](mailto:centrallandsoffice@gov.nl.ca)

- Western Regional Lands Office, P.O. Box 2006, Sir Richard Squires Building, Corner Brook, NL, A2H 6J8 Email: [westernregionlands@gov.nl.ca](mailto:westernregionlands@gov.nl.ca)

- Labrador Regional Lands Office, P.O. Box 3014, Station "B", Happy Valley-Goose Bay, NL, A0P 1E0 Email: [labradorlandsoffice@gov.nl.ca](mailto:labradorlandsoffice@gov.nl.ca)

(DISCLAIMER: *The Newfoundland and Labrador Gazette* publishes a NOTICE OF INTENT as received from the Applicant and takes no responsibility for errors or omissions in the property being more particularly described.)

Apr 6

---

**NOTICE OF INTENT, SECTION 7  
LANDS ACT, SNL1991 c36 AS AMENDED**

NOTICE IS HEREBY given that an application has been made to the Department of Fisheries and Land Resources, Agriculture and Lands Branch, to acquire title, pursuant to section 7(2) (d) of the said Act, to that piece of Crown lands situated within 15 metres of the waters of Lawrence Pond Road West for the purpose of a boat house and wharf.

The application may intrude on the 15 metre shoreline of the above mentioned water body(s) in various locations. For a detailed map, please see website: <http://www.ma.gov.nl.ca/lands/sec7notifications.html>.

Please note: It may take up to five (5) days from the date of application for details to appear on the website.

Any person wishing to object to the application must file the objection in writing with reasons, within 30 days from the publication of notice on the Department of Fisheries and Land Resources website, Crown Lands, <http://www.ma.gov.nl.ca/lands/index.html>, to the Minister of Fisheries and Land Resources by mail or email to the nearest Regional Lands Office:

- Eastern Regional Lands Office, P.O. Box 8700, Howley Building, Higgins Line, St. John's, NL, A1B 4J6 Email: [easternlandsoffice@gov.nl.ca](mailto:easternlandsoffice@gov.nl.ca)

- Central Regional Lands Office, P.O. Box 2222, Gander, NL, A1V 2N9 Email: [centrallandsoffice@gov.nl.ca](mailto:centrallandsoffice@gov.nl.ca)

- Western Regional Lands Office, P.O. Box 2006, Sir Richard Squires Building, Corner Brook, NL, A2H 6J8 Email: [westernregionlands@gov.nl.ca](mailto:westernregionlands@gov.nl.ca)

- Labrador Regional Lands Office, P.O. Box 3014, Station "B", Happy Valley-Goose Bay, NL, A0P 1E0 Email: [labradorlandsoffice@gov.nl.ca](mailto:labradorlandsoffice@gov.nl.ca)

(DISCLAIMER: *The Newfoundland and Labrador Gazette* publishes a NOTICE OF INTENT as received from the Applicant and takes no responsibility for errors or omissions in the property being more particularly described.)

Apr 6

---



**NOTICE OF INTENT, SECTION 7  
LANDS ACT, SNL1991 c36 AS AMENDED**

NOTICE IS HEREBY given that an application has been made to the Department of Fisheries and Land Resources, Agriculture and Lands Branch, to acquire title, pursuant to section 7(2) (d) of the said Act, to that piece of Crown lands situated within 15 metres of the waters of Terra Nova River for the purpose of a walking/hiking trail.

The application may intrude on the 15 metre shoreline of the above mentioned water body(s) in various locations. For a detailed map, please see website: <http://www.ma.gov.nl.ca/lands/sec7notifications.html>.

Please note: It may take up to five (5) days from the date of application for details to appear on the website.

Any person wishing to object to the application must file the objection in writing with reasons, within 30 days from the publication of notice on the Department of Fisheries and Land Resources website, Crown Lands, <http://www.ma.gov.nl.ca/lands/index.html>, to the Minister of Fisheries and Land Resources by mail or email to the nearest Regional Lands Office:

- Eastern Regional Lands Office, P.O. Box 8700, Howley Building, Higgins Line, St. John's, NL, A1B 4J6 Email: [easternlandsoffice@gov.nl.ca](mailto:easternlandsoffice@gov.nl.ca)
- Central Regional Lands Office, P.O. Box 2222, Gander, NL, A1V 2N9 Email: [centrallandsoffice@gov.nl.ca](mailto:centrallandsoffice@gov.nl.ca)
- Western Regional Lands Office, P.O. Box 2006, Sir Richard Squires Building, Corner Brook, NL, A2H 6J8 Email: [westernregionlands@gov.nl.ca](mailto:westernregionlands@gov.nl.ca)
- Labrador Regional Lands Office, P.O. Box 3014, Station "B", Happy Valley-Goose Bay, NL, A0P 1E0 Email: [labradorlandsoffice@gov.nl.ca](mailto:labradorlandsoffice@gov.nl.ca)

(DISCLAIMER: *The Newfoundland and Labrador Gazette* publishes a NOTICE OF INTENT as received from the Applicant and takes no responsibility for errors or omissions in the property being more particularly described.)

Apr 6

---

**TRUSTEE ACT**

**ESTATE NOTICE**

IN THE MATTER OF the Estate of GERTRUDE ALICE KING, Late of St. John's in the Province of Newfoundland and Labrador, Deceased.

All persons claiming to be creditors of, or who have any claims or demands either as beneficiaries or next-of-kin (by full or half blood, legal adoption or marriage) upon or affecting, the Estate of GERTRUDE ALICE KING,

Gentlewoman, who died at St. John's, NL on or about 15<sup>th</sup> day of November, 2013, are hereby requested to send particulars thereof in writing, duly attested, to: Office of the Public Trustee, Viking Building, Suite 401 - 136 Crosbie Road, St. John's, NL A1B 3K3.

Particulars will be received by the Public Trustee, as Administrator of the Estate of GERTRUDE ALICE KING on or before 6<sup>th</sup> day of May, 2018, after which date the said Administrator will proceed to distribute the Estate having regard only to the claims of which he then shall have had notice.

DATED at the City of St. John's, in the Province of Newfoundland and Labrador, this 6<sup>th</sup> day of April, 2018.

OFFICE OF THE PUBLIC TRUSTEE  
Administrator of the Estate of  
Gertrude Alice King

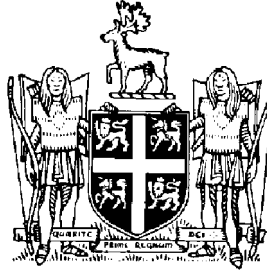
ADDRESS FOR SERVICE:  
Viking Building  
Suite 401 - 136 Crosbie Road  
St. John's, NL A1B 3K3

Tel: (709) 729-0850  
Fax: (709) 729-3063

Apr 6

---





# THE NEWFOUNDLAND AND LABRADOR GAZETTE

**PART II  
SUBORDINATE LEGISLATION  
FILED UNDER THE STATUTES AND SUBORDINATE LEGISLATION ACT**

---

Vol. 93

ST. JOHN'S, FRIDAY, APRIL 6, 2018

No. 14

**NEWFOUNDLAND AND LABRADOR  
REGULATION**

**NLR 29/18**





**NEWFOUNDLAND AND LABRADOR  
REGULATION 29/18**

*Memorial University Traffic Regulations (Amendment)*  
under the  
*Memorial University Act*

*(Filed April 5, 2018)*

Under the authority of section 35 of the *Memorial University Act*,  
the Board of Regents makes the following regulations.

Dated at St. John's, March 28, 2018.

Tina Scott  
Secretary, Board of Regents

**REGULATIONS**

*Analysis*

1. S.45 Amdt.  
Enforcement
2. Schedule Rep.

NLR 87/09  
as amended

**1. Subsection 45(1) of the *Memorial University Traffic Regulations* is repealed and the following substituted:**

(1) A person who violates or contravenes a provision of these regulations is guilty of an offence and is liable to a fine of \$20.

**2. The Schedule to the regulations is repealed.**

©Queen's Printer





## Index

### PART I

Lands Act - Notices.....	129
Mineral Act - Notice .....	123
Quieting of Titles Act.....	127
Urban and Rural Planning Act, 2000 – Notice .....	129
Trustee Act – Notices .....	131

### PART II

#### CONTINUING INDEX OF SUBORDINATE LEGISLATION

<b>Title of Act and Subordinate Legislation made thereunder</b>	<b>CNLR or NL Reg.</b>	<b>Amendment</b>	<b>NL Gazette Date &amp; Page No.</b>
<b>Memorial University Act</b>			
Memorial University Traffic Regulations (Amendment)	NLR 29/18	Amends NLR 87/09 S.45 Amdt. Schedule Rep.	Apr 6/18 p. 617

*The Newfoundland and Labrador Gazette* is published from the Office of the Queen's Printer.

Copy for publication must be received by **Friday, 4:30 p.m.**, seven days before publication date to ensure inclusion in next issue. Advertisements must be submitted in either PDF format or as a MSWord file. When this is not possible, advertisements must be either, typewritten or printed legibly, separate from covering letter. Number of insertions required must be stated and the names of all signing officers typewritten or printed.

Copy may be mailed to the address below, faxed to (709) 729-1900 or emailed to [queensprinter@gov.nl.ca](mailto:queensprinter@gov.nl.ca). Subscription rate for *The Newfoundland and Labrador Gazette* is \$144.38 for 52 weeks plus 15% HST (\$166.04). Weekly issues, \$3.47 per copy, plus 15% HST (\$3.99) payable in advance.

All cheques, money orders, etc., should be made payable to THE NEWFOUNDLAND EXCHEQUER ACCOUNT and all correspondence should be addressed to: Office of the Queen's Printer, P. O. Box 8700, Ground Floor, East Block, Confederation Building, St. John's, NL A1B 4J6, Telephone: (709) 729-3649, Fax: (709) 729-1900.

**Web Site:** <http://www.servicenl.gov.nl.ca/printer/index.html>

*The Newfoundland and Labrador Gazette*  
Advertising Rates  
Prices effective July 1, 2016

<b>Notices</b>	<b>Rate</b>	<b>15%</b>	<b>HST Total</b>
Lands Act - Notice of Intent - 1 week	\$31.13	\$4.67	\$35.80
Motor Carrier Act - Notice - 1 week	\$39.90	\$5.99	\$45.89
Trustee Act - Estate Notice - 1 week	\$34.65	\$5.20	\$39.85
Trustee Act - Estate Notice - 2 weeks	\$62.37	\$9.36	\$71.73
Trustee Act - Estate Notice - 3 weeks	\$91.25	\$13.69	\$104.94
Trustee Act - Estate Notice - 4 weeks	\$118.97	\$17.85	\$136.82

All other public notices required by law to be published in *The Newfoundland and Labrador Gazette*, eg., Corporations Act, Municipalities Act, Quieting of Titles Act, Urban and Rural Planning Act, etc., are priced according to size: for Single Column \$3.47 per cm or Double Column \$6.93 per cm, plus 15% HST.

For quotes please contact the Office of the Queen's Printer [queensprinter@gov.nl.ca](mailto:queensprinter@gov.nl.ca)

**Government Information Product  
Publication Rate Mail  
G.S.T. # R107442683**