



# THE NEWFOUNDLAND AND LABRADOR GAZETTE

PART I  
PUBLISHED BY AUTHORITY

Vol. 93

ST. JOHN'S, FRIDAY, OCTOBER 26, 2018

No. 43

## CITY OF CORNER BROOK ACT, 1990

## LANDS ACT



### THE CITY OF CORNER BROOK TRAFFIC REGULATIONS

PURSUANT TO the powers vested in it under Sections 203 of the *City of Corner Brook Act*, RSN.L1990 c.C-15, as amended, Section 189 of the Highway Traffic Act, RSNL 1990 c.H-3, as amended, (a) delegation(s) of power by the Minister of Works, Services and Transportation dated February 8, 2010 and all other powers it enabling, the Corner Brook City Council amended the CITY OF CORNER BROOK Traffic Regulations.

Any person(s) who wishes to view a copy of the regulation may do so at the City Clerk's Office, Corner Brook City Hall during regular business hours.

These regulations will have effect from the date of publication in *The Newfoundland and Labrador Gazette*.

CITY OF CORNER BROOK  
Marina Redmond, City Clerk

Oct 26

### NOTICE OF INTENT, SECTION 7 *LANDS ACT*, SNL1991 c36 AS AMENDED

NOTICE IS HEREBY given that an application has been made to the Department of Fisheries and Land Resources, Agriculture and Lands Branch, to acquire title, pursuant to section 7(2) d of the said Act, to that piece of Crown lands situated within 15 metres of the waters of Bay of Exploits for the purpose of Recreational Hiking/Walking Trail.

Any person wishing to object to the application must file the objection in writing with reasons, within 30 days from the publication of notice on the Department of Fisheries and Land Resources website, Crown Lands, <http://www.ma.gov.nl.ca/lands/index.html>, to the Minister of Fisheries and Land Resources by mail or email to the nearest Regional Lands Office:

- Eastern Regional Lands Office, P.O. Box 8700, Howley Building, Higgins Line, St. John's, NL, A1B 4J6 Email: [easternlandsoffice@gov.nl.ca](mailto:easternlandsoffice@gov.nl.ca)
- Central Regional Lands Office, P.O. Box 2222, Gander, NL, A1V 2N9 Email: [centrallandsoffice@gov.nl.ca](mailto:centrallandsoffice@gov.nl.ca)
- Western Regional Lands Office, P.O. Box 2006, Sir Richard Squires Building, Corner Brook, NL, A2H 6J8 Email: [westernregionlands@gov.nl.ca](mailto:westernregionlands@gov.nl.ca)

● Labrador Regional Lands Office, P.O. Box 3014, Station "B", Happy Valley-Goose Bay, NL, A0P 1E0  
Email: [labradorlandsoffice@gov.nl.ca](mailto:labradorlandsoffice@gov.nl.ca)

(DISCLAIMER: *The Newfoundland and Labrador Gazette* publishes a NOTICE OF INTENT as received from the Applicant and takes no responsibility for errors or omissions in the property being more particularly described.)

Oct 26

---

**NOTICE OF INTENT, SECTION 7  
LANDS ACT, SNL1991 c36 AS AMENDED**

NOTICE IS HEREBY given that an application has been made to the Department of Fisheries and Land Resources, Agriculture and Lands Branch, to acquire title, pursuant to section 7(2) of the said Act, to that piece of Crown lands situated within 15 metres of the waters of Duck Pond Bauline for the purpose of access route to recreational trail system.

The application may intrude on the 15 metre shoreline of the above mentioned water body(s) in various locations. For a detailed map, please see the website below:  
<http://www.flr.gov.nl.ca/lands/sec7notifications.html>

Any person wishing to object to the application must file the objection in writing with reasons, within 30 days from the publication of notice on the Department of Fisheries and Land Resources website, Crown Lands, <http://www.ma.gov.nl.ca/lands/index.html>, to the Minister of Fisheries and Land Resources by mail or email to the nearest Regional Lands Office:

● Eastern Regional Lands Office, P.O. Box 8700, Howley Building, Higgins Line, St. John's, NL, A1B 4J6  
Email: [easternlandsoffice@gov.nl.ca](mailto:easternlandsoffice@gov.nl.ca)

● Central Regional Lands Office, P.O. Box 2222, Gander, NL, A1V 2N9 Email: [centrallandsoffice@gov.nl.ca](mailto:centrallandsoffice@gov.nl.ca)

● Western Regional Lands Office, P.O. Box 2006, Sir Richard Squires Building, Corner Brook, NL, A2H 6J8 Email: [westernregionlands@gov.nl.ca](mailto:westernregionlands@gov.nl.ca)

● Labrador Regional Lands Office, P.O. Box 3014, Station "B", Happy Valley-Goose Bay, NL, A0P 1E0  
Email: [labradorlandsoffice@gov.nl.ca](mailto:labradorlandsoffice@gov.nl.ca)

(DISCLAIMER: *The Newfoundland and Labrador Gazette* publishes a NOTICE OF INTENT as received from the Applicant and takes no responsibility for errors or omissions in the property being more particularly described.)

Oct 26

---

**NOTICE OF INTENT, SECTION 7  
LANDS ACT, SNL1991 c36 AS AMENDED**

NOTICE IS HEREBY given that an application has been made to the Department of Fisheries and Land Resources,

Agriculture and Lands Branch, to acquire title, pursuant to section 7(2) d of the said Act, to that piece of Crown lands situated within 15 metres of the waters of Norris Cove for the purpose of slipway & wharf.

The application may intrude on the 15 metre shoreline of the above mentioned water body(s) in various locations. For a detailed map, please see the website below:  
<http://www.ma.gov.nl.ca/Jands/sec7notifications.html>  
Please note: It may take up to 5 days from the date of application for details to appear on the website.

Any person wishing to object to the application must file the objection in writing with reasons, within 30 days from the publication of notice on the Department of Fisheries and Land Resources website, Crown Lands, <http://www.ma.gov.nl.ca/lands/index.html>, to the Minister of Fisheries and Land Resources by mail or email to the nearest Regional Lands Office:

● Eastern Regional Lands Office, P.O. Box 8700, Howley Building, Higgins Line, St. John's, NL, A1B 4J6  
Email: [easternlandsoffice@gov.nl.ca](mailto:easternlandsoffice@gov.nl.ca)

● Central Regional Lands Office, P.O. Box 2222, Gander, NL, A1V 2N9 Email: [centrallandsoffice@gov.nl.ca](mailto:centrallandsoffice@gov.nl.ca)

● Western Regional Lands Office, P.O. Box 2006, Sir Richard Squires Building, Corner Brook, NL, A2H 6J8 Email: [westernregionlands@gov.nl.ca](mailto:westernregionlands@gov.nl.ca)

● Labrador Regional Lands Office, P.O. Box 3014, Station "B", Happy Valley-Goose Bay, NL, A0P 1E0  
Email: [labradorlandsoffice@gov.nl.ca](mailto:labradorlandsoffice@gov.nl.ca)

(DISCLAIMER: *The Newfoundland and Labrador Gazette* publishes a NOTICE OF INTENT as received from the Applicant and takes no responsibility for errors or omissions in the property being more particularly described.)

Oct 26

---

**NOTICE OF INTENT, SECTION 7  
LANDS ACT, SNL1991 c36 AS AMENDED**

NOTICE IS HEREBY given that an application has been made to the Department of Fisheries and Land Resources, Agriculture and Lands Branch, to acquire title, pursuant to section 7(2) d of the said Act, to that piece of Crown lands situated within 15 metres of the waters of Creston Inlet, Mary's Town for the purpose of retaining wall and wharf.

The application may intrude on the 15 metre shoreline of the above mentioned water body(s) in various locations. For a detailed map, please see the website below:  
<http://www.ma.gov.nl.ca/lands/sec7notifications.html>  
Please note: It may take up to 5 days from the date of application for details to appear on the website.

Any person wishing to object to the application must file the objection in writing with reasons, within 30 days from the publication of notice on the Department of Fisheries and

Land Resources website, Crown Lands, <http://www.ma.gov.nl.ca/lands/index.html>, to the Minister of Fisheries and Land Resources by mail or email to the nearest Regional Lands Office:

- Eastern Regional Lands Office, P.O. Box 8700, Howley Building, Higgins Line, St. John's, NL, A1B 4J6 Email: [easternlandsoffice@gov.nl.ca](mailto:easternlandsoffice@gov.nl.ca)

- Central Regional Lands Office, P.O. Box 2222, Gander, NL, A1V 2N9 Email: [centrallandsoffice@gov.nl.ca](mailto:centrallandsoffice@gov.nl.ca)

- Western Regional Lands Office, P.O. Box 2006, Sir Richard Squires Building, Corner Brook, NL, A2H 6J8 Email: [westernregionlands@gov.nl.ca](mailto:westernregionlands@gov.nl.ca)

- Labrador Regional Lands Office, P.O. Box 3014, Station "B", Happy Valley-Goose Bay, NL, A0P 1E0 Email: [labradorlandsoffice@gov.nl.ca](mailto:labradorlandsoffice@gov.nl.ca)

(DISCLAIMER: *The Newfoundland and Labrador Gazette* publishes a NOTICE OF INTENT as received from the Applicant and takes no responsibility for errors or omissions in the property being more particularly described.)

Oct 26

---

**NOTICE OF INTENT, SECTION 7  
LANDS ACT, SNL1991 c36 AS AMENDED**

NOTICE IS HEREBY given that an application has been made to the Department of Fisheries and Land Resources, Agriculture and Lands Branch, to acquire title, pursuant to section 7(2) d of the said Act, to that piece of Crown lands situated within 15 metres of the waters of Bethunes Pond, Whitbourne for the purpose of wharf & boathouse.

The application may intrude on the 15 metre shoreline of the above mentioned water body(s) in various locations. For a detailed map, please see the website below:  
<http://www.ma.gov.nl.ca/lands/sec7notifications.html> Please note: It may take up to 5 days from the date of application for details to appear on the website.

Any person wishing to object to the application must file the objection in writing with reasons, within 30 days from the publication of notice on the Department of Fisheries and Land Resources website, Crown Lands, <http://www.ma.gov.nl.ca/lands/index.html>, to the Minister of Fisheries and Land Resources by mail or email to the nearest Regional Lands Office:

- Eastern Regional Lands Office, P.O. Box 8700, Howley Building, Higgins Line, St. John's, NL, A1B 4J6 Email: [easternlandsoffice@gov.nl.ca](mailto:easternlandsoffice@gov.nl.ca)

- Central Regional Lands Office, P.O. Box 2222, Gander, NL, A1V 2N9 Email: [centrallandsoffice@gov.nl.ca](mailto:centrallandsoffice@gov.nl.ca)

- Western Regional Lands Office, P.O. Box 2006, Sir Richard Squires Building, Corner Brook, NL, A2H 6J8 Email: [westernregionlands@gov.nl.ca](mailto:westernregionlands@gov.nl.ca)

- Labrador Regional Lands Office, P.O. Box 3014, Station "B", Happy Valley-Goose Bay, NL, A0P 1E0 Email: [labradorlandsoffice@gov.nl.ca](mailto:labradorlandsoffice@gov.nl.ca)

(DISCLAIMER: *The Newfoundland and Labrador Gazette* publishes a NOTICE OF INTENT as received from the Applicant and takes no responsibility for errors or omissions in the property being more particularly described.)

Oct 26

---

**NOTICE OF INTENT, SECTION 7  
LANDS ACT, SNL1991 c36 AS AMENDED**

NOTICE IS HEREBY given that an application has been made to the Department of Fisheries and Land Resources, Agriculture and Lands Branch, to acquire title, pursuant to section 7(2) d of the said Act, to that piece of Crown lands situated within 15 metres of the waters of Port Saunders for the purpose of boathouse/wharf.

The application may intrude on the 15 metre shoreline of the above mentioned water body(s) in various locations. For a detailed map, please see the website below:  
<http://www.ma.gov.nl.ca/lands/sec7notifications.html> Please note: It may take up to 5 days from the date of application for details to appear on the website.

Any person wishing to object to the application must file the objection in writing with reasons, within 30 days from the publication of notice on the Department of Fisheries and Land Resources website, Crown Lands, <http://www.ma.gov.nl.ca/lands/index.html>, to the Minister of Fisheries and Land Resources by mail or email to the nearest Regional Lands Office:

- Eastern Regional Lands Office, P.O. Box 8700, Howley Building, Higgins Line, St. John's, NL, A1B 4J6 Email: [easternlandsoffice@gov.nl.ca](mailto:easternlandsoffice@gov.nl.ca)

- Central Regional Lands Office, P.O. Box 2222, Gander, NL, A1V 2N9 Email: [centrallandsoffice@gov.nl.ca](mailto:centrallandsoffice@gov.nl.ca)

- Western Regional Lands Office, P.O. Box 2006, Sir Richard Squires Building, Corner Brook, NL, A2H 6J8 Email: [westernregionlands@gov.nl.ca](mailto:westernregionlands@gov.nl.ca)

- Labrador Regional Lands Office, P.O. Box 3014, Station "B", Happy Valley-Goose Bay, NL, A0P 1E0 Email: [labradorlandsoffice@gov.nl.ca](mailto:labradorlandsoffice@gov.nl.ca)

(DISCLAIMER: *The Newfoundland and Labrador Gazette* publishes a NOTICE OF INTENT as received from the Applicant and takes no responsibility for errors or omissions in the property being more particularly described.)

Oct 26

---

**NOTICE OF INTENT, SECTION 7  
LANDS ACT, SNL1991 c36 AS AMENDED**

NOTICE IS HEREBY given that an application has been made to the Department of Fisheries and Land Resources,

Agriculture and Lands Branch, to acquire title, pursuant to section 7(2) d of the said Act, to that piece of Crown lands situated within 15 metres of the waters of Wareham, Trinity Bay, Bonavista Bay for the purpose of wharf, slipway, boathouse.

The application may intrude on the 15 metre shoreline of the above mentioned water body(s) in various locations. For a detailed map, please see the website below:

<http://www.ma.gov.nl.ca/lands/sec7notifications.html> Please note: It may take up to 5 days from the date of application for details to appear on the website.

Any person wishing to object to the application must file the objection in writing with reasons, within 30 days from the publication of notice on the Department of Fisheries and Land Resources website, Crown Lands, <http://www.ma.gov.nl.ca/lands/index.html>, to the Minister of Fisheries and Land Resources by mail or email to the nearest Regional Lands Office:

- Eastern Regional Lands Office, P.O. Box 8700, Howley Building, Higgins Line, St. John's, NL, A1B 4J6 Email: [easternlandsoffice@gov.nl.ca](mailto:easternlandsoffice@gov.nl.ca)

- Central Regional Lands Office, P.O. Box 2222, Gander, NL, A1V 2N9 Email: [centrallandsoffice@gov.nl.ca](mailto:centrallandsoffice@gov.nl.ca)

- Western Regional Lands Office, P.O. Box 2006, Sir Richard Squires Building, Corner Brook, NL, A2H 6J8 Email: [westernregionlands@gov.nl.ca](mailto:westernregionlands@gov.nl.ca)

- Labrador Regional Lands Office, P.O. Box 3014, Station "B", Happy Valley-Goose Bay, NL, A0P 1E0 Email: [labradorlandsoffice@gov.nl.ca](mailto:labradorlandsoffice@gov.nl.ca)

(DISCLAIMER: *The Newfoundland and Labrador Gazette* publishes a NOTICE OF INTENT as received from the Applicant and takes no responsibility for errors or omissions in the property being more particularly described.)

Oct 26

---

**NOTICE OF INTENT, SECTION 7  
LANDS ACT, SNL1991 c36 AS AMENDED**

NOTICE IS HEREBY given that an application has been made to the Department of Fisheries and Land Resources, Agriculture and Lands Branch, to acquire title, pursuant to section 7(2) d of the said Act, to that piece of Crown lands situated within 15 metres of the waters of Neddie Smith's Pond for the purpose of walking trail.

The application may intrude on the 15 metre shoreline of the above mentioned water body(s) in various locations. For a detailed map, please see the website below:

<http://www.ma.gov.nl.ca/lands/sec7notifications.html> Please note: It may take up to 5 days from the date of application for details to appear on the website.

Any person wishing to object to the application must file the objection in writing with reasons, within 30 days from

the publication of notice on the Department of Fisheries and Land Resources website, Crown Lands, <http://www.ma.gov.nl.ca/lands/index.html>, to the Minister of Fisheries and Land Resources by mail or email to the nearest Regional Lands Office:

- Eastern Regional Lands Office, P.O. Box 8700, Howley Building, Higgins Line, St. John's, NL, A1B 4J6 Email: [easternlandsoffice@gov.nl.ca](mailto:easternlandsoffice@gov.nl.ca)

- Central Regional Lands Office, P.O. Box 2222, Gander, NL, A1V 2N9 Email: [centrallandsoffice@gov.nl.ca](mailto:centrallandsoffice@gov.nl.ca)

- Western Regional Lands Office, P.O. Box 2006, Sir Richard Squires Building, Corner Brook, NL, A2H 6J8 Email: [westernregionlands@gov.nl.ca](mailto:westernregionlands@gov.nl.ca)

- Labrador Regional Lands Office, P.O. Box 3014, Station "B", Happy Valley-Goose Bay, NL, A0P 1E0 Email: [labradorlandsoffice@gov.nl.ca](mailto:labradorlandsoffice@gov.nl.ca)

(DISCLAIMER: *The Newfoundland and Labrador Gazette* publishes a NOTICE OF INTENT as received from the Applicant and takes no responsibility for errors or omissions in the property being more particularly described.)

Oct 26

---

**MECHANICS' LIEN ACT**

**CERTIFICATE OF  
SUBSTANTIAL PERFORMANCE  
CITY OF ST. JOHN'S  
90 ABERDEEN AVENUE,  
ST. JOHN'S, NEWFOUNDLAND**

THIS IS TO CERTIFY that the contract for the following improvement: RELAY RENOVATION to the above premises was substantially performed on OCTOBER 15, 2018.

NAME OF CONTRACTOR: Traugott Building Contractors Inc. ADDRESS FOR SERVICE: 95 Thompson Drive, Cambridge, Ontario, N1T 2E4

NAME OF PAYMENT CERTIFIER: Petroff Partnership Architects. Address: 260 Town Centre Blvd., Markham, Ontario, L3R 8H8

IDENTIFICATION OF PREMISES FOR PRESERVATION OF LIENS: 90 Aberdeen Avenue, St. John's, Newfoundland

DATE certificate signed: October 18, 2018

WAL-MART CANADA CORP.  
Mark Feldman, Architect

ADDRESS FOR SERVICE:  
1940 Argentia Road,  
Mississauga, Ontario, L5N 1P9

Oct 26

---

**QUIETING OF TITLES ACT**

**2018 01 G 0126  
IN THE SUPREME COURT OF  
NEWFOUNDLAND AND LABRADOR  
GENERAL DIVISION**

IN THE MATTER OF an Application of JOHN O'ROURKE, of St. John's, Province of Newfoundland and Labrador, to have title to that piece or parcel of land situate and being on Conception Bay Highway, Holyrood, Province of Newfoundland and Labrador containing an area of 4.9575 ha investigated and declared under the *Quieting of Titles Act*, RSNL1990, c.Q-3.

**NOTICE**

NOTICE is hereby given to all parties that JOHN O'ROURKE of St. John's in the Province of Newfoundland and Labrador (hereinafter called the "Owner") has applied to the Supreme Court of Newfoundland and Labrador, Trial Division (General) to have investigated:

ALL THAT piece or parcel of land situate and being West of the Conception Bay Highway, in the Town of Holyrood, in the Province of Newfoundland and Labrador, bounded and abutted as follows: that is to say beginning at a point, said point having T.M. Grid Co-ordinates (C.M. 53°) (NAO 83) of N 5252 296.444 and E 296 277.354;

THENCE RUNNING North 65°29'13" West by land of Carey J. Redmond (R 39F 2740) a distance of 49.267 metres to a point;

THENCE turning and running North 81°24'18" West by land of John Hill a distance of 30.480 metres to a point;

THENCE turning and running South 30°48'42" West by land of John Hill a distance of 45.083 metres to a point;

THENCE turning and running North 80°39'54" West by land of Michael Finn (V 2626 F 572) a distance of 15.224 metres to a point;

THENCE turning and running North 85°30'13" West by land of Michael Finn (V 2626 F 572) a distance of 110.170 metres to a point;

THENCE turning and running North 84°02'37" West by land of Michael Finn (V 2626 F 572) a distance of 113.930 metres to a point;

THENCE turning and running North 84°49'10" West by land of Michael Finn (V 2626 F 572) a distance of 126.792 metres to a point;

THENCE turning and running North 04°06'17" East by the Old Railway Track (15.24m wide) a distance of 115.479 metres to a point;

THENCE turning and running South 85°46'00" East by land of Edward O'Toole a distance of 60.954 metres to a point;

THENCE turning and running South 87°39'42" East by land of Edward Murray and Cecilia Murray a distance of 292.625 metres to a point;

THENCE turning and running South 87°39' 42" East by land of Edward Murray a distance of 53.564 metres to a point;

THENCE turning and running South 14°14'13" West by land of Edward Walsh and by land of Arthur Hicks a distance of 76.402 metres to a point;

THENCE turning and running South 65°58'03" East by land of Brian Howard a distance of 77.119 metres to a point;

THENCE turning and running South 19°14'25" West by the Western Limits of the Conception Bay Highway a distance of 12.446 metres to the PLACE OF BEGINNING and containing in all an area of 4.9575 hectares as more particularly described and delineated on plan N95119, 02-JAN-96 hereto annexed.

SUBJECT TO a power line easement being 15.24m wide extending through the mid portion of the parcel of land as indicated on the attached plan.

ALL bearings are referred to Grid North.

The above described piece or parcel of land contains an area of 4.9575 hectares, more or less, the same being more particularly described on the drawing hereto attached.

All persons having title adverse to the said title claims by the Owner shall file in the Registry of the Supreme Court of Newfoundland and Labrador, General Division particulars of such adverse claim and serve same, together with an Affidavit verifying same, to the 3<sup>rd</sup> day of December, 2018, after which date no party having a claim shall be permitted to file same or be heard except by leave of the Court and subject to such conditions as the Court may deem just. All adverse claims shall then be registered in such manner as the Supreme Court may direct.

O'DEA, EARLE  
Solicitors for the Petitioner/Applicant  
PER: Gegory F. Kirby

ADDRESS FOR SERVICE:  
323 Duckworth Street  
P.O. Box 5955  
St. John's, NF A1C 5X4

Tel: (709) 726-3524  
Fax: (709) 726-9600



**SCHEDULE "A"**  
**JACK O'ROURKE**  
Main Road, Holyrood, NL

ALL THAT piece or parcel of land situate and being West of the Conception Bay Highway, in the Town of Holyrood, in the Province of Newfoundland, bounded and abutted as follows: That is to say beginning at a point, said point having T.M. Grid Co-ordinates (C.M. 53°) (NAD 83) of N 5 252 296.444 and E 296 277.354;

THENCE RUNNING North 65°29'13" West by land of Carey J. Redmond (R 39 F 2740) a distance of 49.267 metres to a point;

THENCE turning and running North 81°24'18" West by land of John Hill a distance of 30.480 metres to a point;

THENCE turning and running South 30°48'42" West by land of John Hill a distance of 45 .083 metres to a point;

THENCE turning and running North 80°39'54" West by land of Michael Finn (V 2626 F 572) a distance of 15.224 metres to a point;

THENCE turning and running North 85°30'13" West by land of Michael Finn (V 2626 F 572) a distance of 110.170 metres to a point;

THENCE turning and running North 84°02'37" West by land of Michael Finn (V 2626 F 572) a distance of 113.930 metres to a point;

THENCE turning and running North 84°49'10" West by land of Michael Finn (V 2626 F 572) a distance of 126.792 metres to a point;

THENCE turning and running North 04°06'17" East by the Old Railway Track (15.24m wide) a distance of 115.479 metres to a point;

THENCE turning and running South 85°46'00" East by land of Edward O'Toole a distance of 60.954 metres to a point;

THENCE turning and running South 87°39'42" East by land of Edward Murray and Cecilia Murray a distance of 292.625 metres to a point;

THENCE turning and running South 87°39'42" East by land of Edward Murray a distance of 53.564 metres to a point;

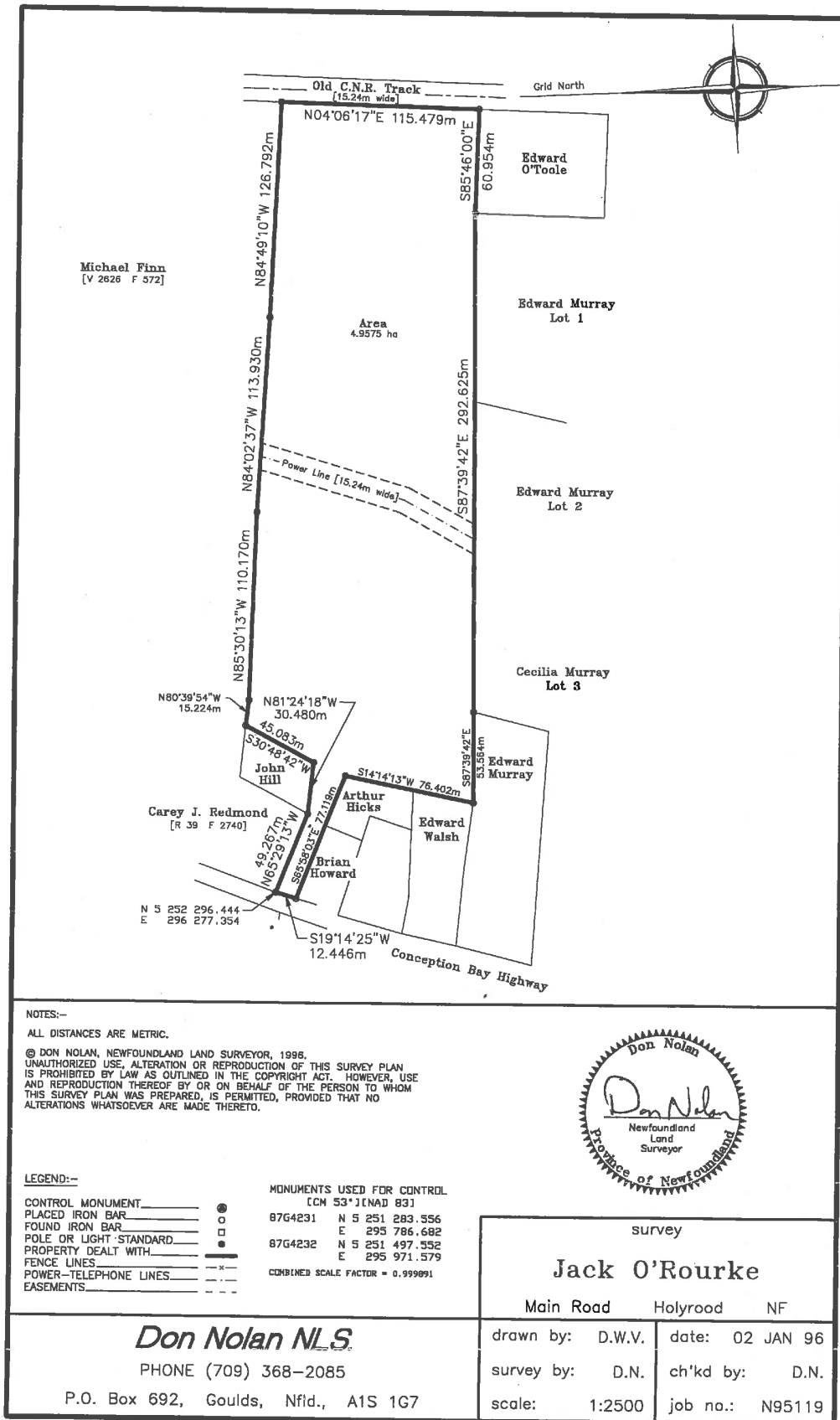
THENCE turning and running South 14°14'13" West by land of Edward Walsh and by land of Arthur Hicks a distance of 76.402 metres to a point;

THENCE turning and running South 65°58'03" East by land of Brian Howard a distance of 77.119 metres to a point;

THENCE turning and running South 19°14'25" West by the Western Limits of the Conception Bay Highway a distance of 12.446 metres to the PLACE OF BEGINNING and containing in all an area of 4.9575 hectares as more particularly described and delineated on plan N95119, 02-JAN-96 hereto annexed.

SUBJECT TO a power line easement being 15.24m wide extending through the mid portion of the parcel of land as indicated on the attached plan.

ALL bearings are referred to Grid North.



**NOTES:-**

ALL DISTANCES ARE METRIC.

© DON NOLAN, NEWFOUNDLAND LAND SURVEYOR, 1996.  
 UNAUTHORIZED USE, ALTERATION OR REPRODUCTION OF THIS SURVEY PLAN IS PROHIBITED BY LAW AS OUTLINED IN THE COPYRIGHT ACT. HOWEVER, USE AND REPRODUCTION THEREOF BY OR ON BEHALF OF THE PERSON TO WHOM THIS SURVEY PLAN WAS PREPARED, IS PERMITTED, PROVIDED THAT NO ALTERATIONS WHATSOEVER ARE MADE THERETO.



**LEGEND:-**

- CONTROL MONUMENT \_\_\_\_\_ ●
- PLACED IRON BAR \_\_\_\_\_ ○
- FOUND IRON BAR \_\_\_\_\_ □
- POLE OR LIGHT STANDARD \_\_\_\_\_ ●
- PROPERTY DEALT WITH \_\_\_\_\_
- FENCE LINES \_\_\_\_\_ -x-
- POWER-TELEPHONE LINES \_\_\_\_\_ - - -
- EASEMENTS \_\_\_\_\_ - - -

**MONUMENTS USED FOR CONTROL**  
 [CM 53°] [NAD 83]  
 87G4231 N 5 251 283.556  
 E 295 786.682  
 87G4232 N 5 251 497.552  
 E 295 971.579  
 COMBINED SCALE FACTOR = 0.999891

|                      |                 |
|----------------------|-----------------|
| survey               |                 |
| <b>Jack O'Rourke</b> |                 |
| Main Road            | Holyrood NF     |
| drawn by: D.W.V.     | date: 02 JAN 96 |
| survey by: D.N.      | ch'kd by: D.N.  |
| scale: 1:2500        | job no.: N95119 |

**Don Nolan N.L.S.**

PHONE (709) 368-2085

P.O. Box 692, Goulds, Nfld., A1S 1G7

**TRUSTEE ACT  
ESTATE NOTICE**

ROXANNE PIKE LAW OFFICE  
Solicitor for the Executrix  
PER: Roxanne Pike

IN THE MATTER OF the Estate of ELIZABETH HALLERAN, Late of St. John's, in the Province of Newfoundland and Labrador, Deceased.

ADDRESS FOR SERVICE:

P.O. Box 272  
43 Main Street  
Stephenville, NL  
A2N 2Z4

Tel: (709) 643-6436  
Fax: (709) 643-9343

All persons claiming to be creditors of, or who have any claims or demands either as beneficiaries or next-of-kin (by blood, legal adoption or marriage) upon or affecting, the Estate of ELIZABETH HALLERAN, Gentlewoman, who died at St. John's, NL on or about January 19, 2017, are hereby requested to send particulars thereof in writing, duly attested, to Office of the Public Trustee, 401 - 136 Crosbie Road, St. John's, NL, A1B 3K3

Oct 26

---

Particulars will be received by the Public Trustee, as Administrator of the Estate of ELIZABETH HALLERAN, on or before December 7, 2018, after which date the said Administrator will proceed to distribute the Estate having regard only to the claims of which he then shall have had notice.

DATED AT the City of St. John's, in the Province of Newfoundland and Labrador, this 2nd day of November, 2018.

OFFICE OF THE PUBLIC TRUSTEE  
Administrator of the Estate of  
ELIZABETH HALLERAN  
PER: Karen Lawlor, Estates Officer II

ADDRESS FOR SERVICE:  
Viking Building 401-136 Crosbie Road  
St. John's, NL A1B 3K3

Tel: (709) 729-1025  
Fax: (709) 729-3063

Oct 26

---

**ESTATE NOTICE**

IN THE MATTER OF the Estate of JOSEPH EDMOND KING, Late of Stephenville Crossing, in the Province of Newfoundland and Labrador, Deceased: March 25, 2018.

All persons claiming to be creditors of or who have any claims or demands upon or affecting the Estate of JOSEPH EDMOND KING, Late of Stephenville Crossing, in the Province of Newfoundland and Labrador, Deceased, are hereby requested to send the particulars of the same in writing, duly attested, to the undersigned Solicitor for the Executrix of the Estate on or before the 27<sup>th</sup> of November, 2018, after which date the said Executrix will proceed to distribute the said Estate having regard only to the claims of which notice shall have been received.

DATED AT Stephenville, Newfoundland and Labrador, this 23<sup>rd</sup> day of October, 2018.





# THE NEWFOUNDLAND AND LABRADOR GAZETTE

**PART II  
SUBORDINATE LEGISLATION  
FILED UNDER THE STATUTES AND SUBORDINATE LEGISLATION ACT**

---

Vol. 93

ST. JOHN'S, FRIDAY, October 26, 2018

No. 3

## **NEWFOUNDLAND AND LABRADOR REGULATIONS**

**NLR 96/18  
NLR 97/18  
NLR 98/18**





**NEWFOUNDLAND AND LABRADOR  
REGULATION 96/18**

*Proclamation bringing Act into force  
(SNL 2018 c21) (Oct. 17, 2018)  
under  
An act to Amend the Corporations Act  
(O.C. 2018-210)*

*(Filed October 25, 2018)*

*ELIZABETH THE SECOND, by the Grace of God of the  
United Kingdom, Canada and Her Other Realms and Territories  
QUEEN, Head of the Commonwealth, Defender of the Faith.*

*Dated at St. John's, October 25, 2018*

JUDY M. FOOTE  
Lieutenant Governor

JENNIFER MERCER  
Deputy Attorney General

TO ALL TO WHOM THESE PRESENTS SHALL COME,

GREETING;

**A PROCLAMATION**

WHEREAS in and by section 2 of *An Act to Amend the Corporations Act*, Statutes of Newfoundland and Labrador 2018, Chapter 21 (the "Act") it is provided that the Act comes into force on a day to be proclaimed by the Lieutenant Governor in Council;

AND WHEREAS it is deemed expedient that the Act shall now come into force;

NOW KNOW YE, THAT WE, by and with the advice of Our Executive Council of Our Province of Newfoundland and Labrador, do by this our Proclamation declare and direct that *An Act to Amend the Corporations Act*, Statutes of Newfoundland and Labrador 2018, Chapter 21 shall come into force on the date of publication of this proclamation in *The Newfoundland and Labrador Gazette*.

OF ALL WHICH OUR LOVING SUBJECTS AND ALL OTHERS whom these Presents may concern are hereby required to take notice and to govern themselves accordingly.

*Proclamation bringing Act into force  
An Act to Amend the Corporations Act*

91/18

IN TESTIMONY WHEREOF WE have caused these Our Letters to be Made Patent and the Great Seal of Newfoundland and Labrador to be hereunto affixed.

SUSAN KING  
Office of the Legislative Counsel

WITNESS: Our trusty and well-beloved  
the Honourable Judy M. Foote, Member of  
Our Privy Council of Canada, Chancellor of  
the Order of Newfoundland and Labrador,  
Lieutenant Governor in and for Our Province of  
Newfoundland and Labrador.

AT OUR GOVERNMENT HOUSE, in Our  
City of St. John's, this 17<sup>th</sup> day of October in the  
year of Our Lord two thousand and eighteen, in  
the sixty-seventh year of Our Reign.

BY COMMAND,

AL HAWKINS  
Registrar General

©Queens Printer



**NEWFOUNDLAND AND LABRADOR  
REGULATION 97/18**

*Public Service Commission Act Schedule C  
Amendment Order, 2018 No. 4*  
under the  
*Public Service Commission Act*  
(O.C. 2018-211)

*(Filed October 25, 2018)*

Under the authority of section 24 of the *Public Commission Act*,  
the Lieutenant-Governor in Council makes the following Order.

Dated at St. John's, October 17, 2018.

Ann Marie Hann  
Clerk of the Executive Council

**ORDER**

*Analysis*

1. Short title
2. RSNL1990 cP-43  
Sch. C Amdt.
3. Repeal

Short title

**1.** This Order may be cited as the *Public Service Commission Act  
Schedule C Amendment Order, 2018 No. 4*.

RSNL1990 cP-43  
Sch. C Amdt.

**2.** Schedule C of the *Public Service Commission Act* is amended  
by deleting the statutory appointment reference "*Buildings  
Accessibility Act*, section 18 with respect to Lieutenant-Governor in  
Council appointments" and substituting the statutory appointment

reference "*Buildings Accessibility Act*, sections 18 and 20 with respect to Lieutenant-Governor in Council appointments".

Repeal

**3. The *Public Service Commission Act Schedule C Amendment Order, 2018 No. 3*, Newfoundland and Labrador Regulation 88/18 is repealed.**

©Queen's Printer





**NEWFOUNDLAND AND LABRADOR  
REGULATION 98/18**

*Protected Road Zoning Regulations (Amendment)*  
under the  
*Urban and Rural Planning Act, 2000*

*(Filed October 25, 2018)*

Under the authority of sections 32 and 36 of the *Urban and Rural Planning Act, 2000*, I make the following regulations.

Dated at St. John's, October 18, 2018.

Andrew Parsons, Q.C.  
Minister of Municipal Affairs and Environment

**REGULATIONS**

*Analysis*

1. Sch. B Amdt.

CNLR 996/96  
as amended

**1. Schedule B, Class II Protected Roads, Item (21) of the *Protected Road Zoning Regulations* is repealed and the following substituted:**

(21) TRINITY SOUTH HIGHWAY

The Trinity South Highway (Route 80), as existing or proposed, from its intersection with the Trans Canada Highway (Route 1), at Whitbourne, to its intersection with Track Road in the Town of Old

Perlican, excluding Beach Road in the local service district of Cavendish and those sections of highway conjoint with the municipalities of Heart's Delight, Heart's Desire, Heart's Content, New Perlican and Winterton as per the following descriptions:

- (a) Heart's Delight - commencing at a point 600 metres south of the centre line of the bridge over Bear Cove Brook, where it crosses the highway, and extending to a point 410 metres north of the centre line of the northern approach of the Road to Northeast Side of Heart's Delight, as referred to locally, with Route 80;
- (b) Heart's Desire - commencing at a point 230 metres south of the centre line of the bridge over Heart's Desire Brook, where it crosses the road, and extending to a point 90 metres north of the centre line of the intersection of Route 80 with Bill Clark's Lane, as referred to locally;
- (c) Heart's Content - commencing at a point 110 metres south of the centre line of the intersection of Route 80 with the Southern Cove Access Road and extending to a point where the centre line of the access to Northern Point lighthouse intersects with Route 80;
- (d) New Perlican - commencing at a point 200 metres south of the centre line of the intersection of Route 80 with Vitters Cove Access Road, and extending to a point 400 metres north of the centre line of the bridge over New Perlican River, where it crosses the highway; and
- (e) Winterton - commencing at a point one kilometre south of the centre line of the bridge traversing the outflow leading from Western Pond, where it crosses the highway, and extending to a point 915 metres north of the centre line of the intersection of Route 80 and the Harbour Bridge Road.

©Queen's Printer

## Index

### PART I

|   |     |
|---|-----|
| City of Corner Brook Act, 1990 — Notice ..... | 353 |
| Lands Act — Notices .....                     | 353 |
| Mechanics' Lien Act — Notice .....            | 356 |
| Quieting of Titles Act — Notice .....         | 357 |
| Trustee Act — Notices .....                   | 360 |

### PART II

#### CONTINUING INDEX OF SUBORDINATE LEGISLATION

| Title of Act and<br>Subordinate Legislation<br>made thereunder                | CNLR or<br>NL Reg. | Amendment             | NL Gazette<br>Date & Page No. |
|---|--------------------|-----------------------|-------------------------------|
| <b>An Act to Amend the Corporations Act</b>                                   |                    |                       |                               |
| Proclamation bringing Act into force  | NLR 96/18          | New                   | Oct 26/18 p. 1127             |
| <b>Public Service Commission Act</b>  |                    |                       |                               |
| Public Service Commission Act<br>Schedule C<br>Amendment Order,<br>2018 No. 4 | NLR 97/18          | R&S<br>NLR 88/18      | Oct. 26/18 p. 1129            |
| <b>Urban and Rural Planning Act, 2000</b>                                     |                    |                       |                               |
| Protected Road<br>Zoning Regulations<br>(Amdt.)                               | NLR 98/18          | Amends<br>CNLR 996/96 | Oct. 26/18 p. 1131            |

*The Newfoundland and Labrador Gazette* is published from the Office of the Queen's Printer.

Copy for publication must be received by **Friday, 4:30 p.m.**, seven days before publication date to ensure inclusion in next issue. Advertisements must be submitted in either PDF format or as a MSWord file. When this is not possible, advertisements must be either, typewritten or printed legibly, separate from covering letter. Number of insertions required must be stated and the names of all signing officers typewritten or printed.

Copy may be mailed to the address below, faxed to (709) 729-1900 or emailed to [queensprinter@gov.nl.ca](mailto:queensprinter@gov.nl.ca). Subscription rate for *The Newfoundland and Labrador Gazette* is \$144.38 for 52 weeks plus 15% HST (\$166.04). Weekly issues, \$3.47 per copy, plus 15% HST (\$3.99) payable in advance.

All cheques, money orders, etc., should be made payable to THE NEWFOUNDLAND EXCHEQUER ACCOUNT and all correspondence should be addressed to: Office of the Queen's Printer, P. O. Box 8700, Ground Floor, East Block, Confederation Building, St. John's, NL A1B 4J6, Telephone: (709) 729-3649, Fax: (709) 729-1900.

**Web Site:** <http://www.servicenl.gov.nl.ca/printer/index.html>

*The Newfoundland and Labrador Gazette*  
Advertising Rates  
Prices effective July 1, 2016

| <b>Notices</b>                        | <b>Rate</b> | <b>15%</b> | <b>HST Total</b> |
|---------------------------------------|-------------|------------|------------------|
| Lands Act - Notice of Intent - 1 week | \$31.13     | \$4.67     | \$35.80          |
| Motor Carrier Act - Notice - 1 week   | \$39.90     | \$5.99     | \$45.89          |
| Trustee Act - Estate Notice - 1 week  | \$34.65     | \$5.20     | \$39.85          |
| Trustee Act - Estate Notice - 2 weeks | \$62.37     | \$9.36     | \$71.73          |
| Trustee Act - Estate Notice - 3 weeks | \$91.25     | \$13.69    | \$104.94         |
| Trustee Act - Estate Notice - 4 weeks | \$118.97    | \$17.85    | \$136.82         |

All other public notices required by law to be published in *The Newfoundland and Labrador Gazette*, eg., Corporations Act, Municipalities Act, Quieting of Titles Act, Urban and Rural Planning Act, etc., are priced according to size: for Single Column \$3.47 per cm or Double Column \$6.93 per cm, plus 15% HST.

For quotes please contact the Office of the Queen's Printer [queensprinter@gov.nl.ca](mailto:queensprinter@gov.nl.ca)

**Government Information Product**  
**Publication Rate Mail**  
**G.S.T. # R107442683**