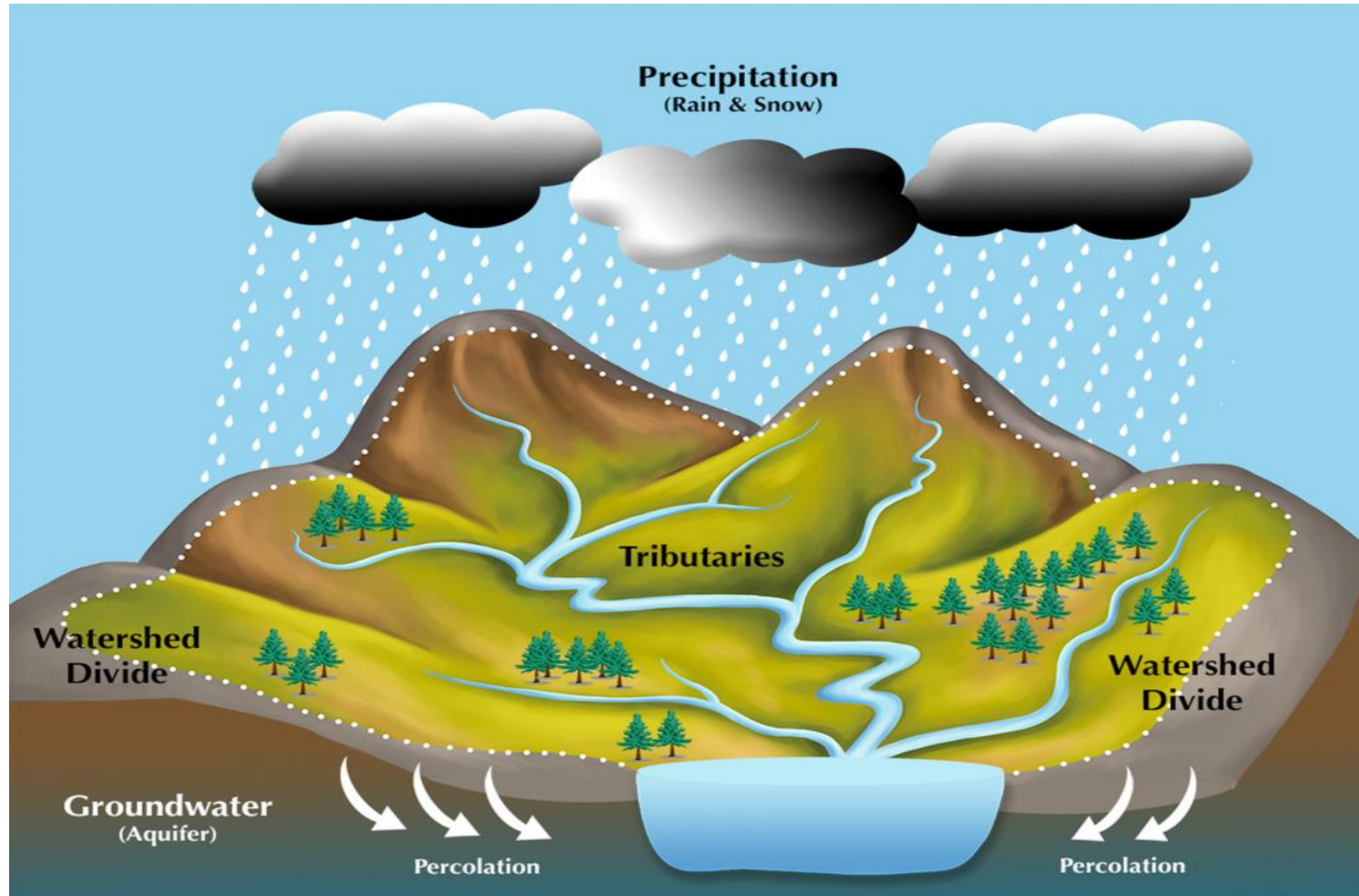


Fuel and Your Water Supply

Oil and Water Don't Mix.

What is a watershed?



The Act

SNL2002 CHAPTER W-4.01

WATER RESOURCES ACT

Amended:

2004 cL-3.1 s66; 2008 c47 s20; 2008 cE-9.1 s28; 2013 c16 s25;
2016 c45 s15

CHAPTER W-4.01

**AN ACT RESPECTING THE CONTROL AND MANAGEMENT OF WATER
RESOURCES IN THE PROVINCE**

(Assented to May 22, 2002)

Buffers

Water Body	Width of Buffer Zones
Intake pond or lake	a minimum of 150 metres
River intake	a minimum of 150 metres for a distance of one km upstream and 100 m downstream
Main river channel	a minimum of 75 metres
Major tributaries, lakes or ponds	a minimum of 50 metres
Other water bodies	a minimum of 30 metres

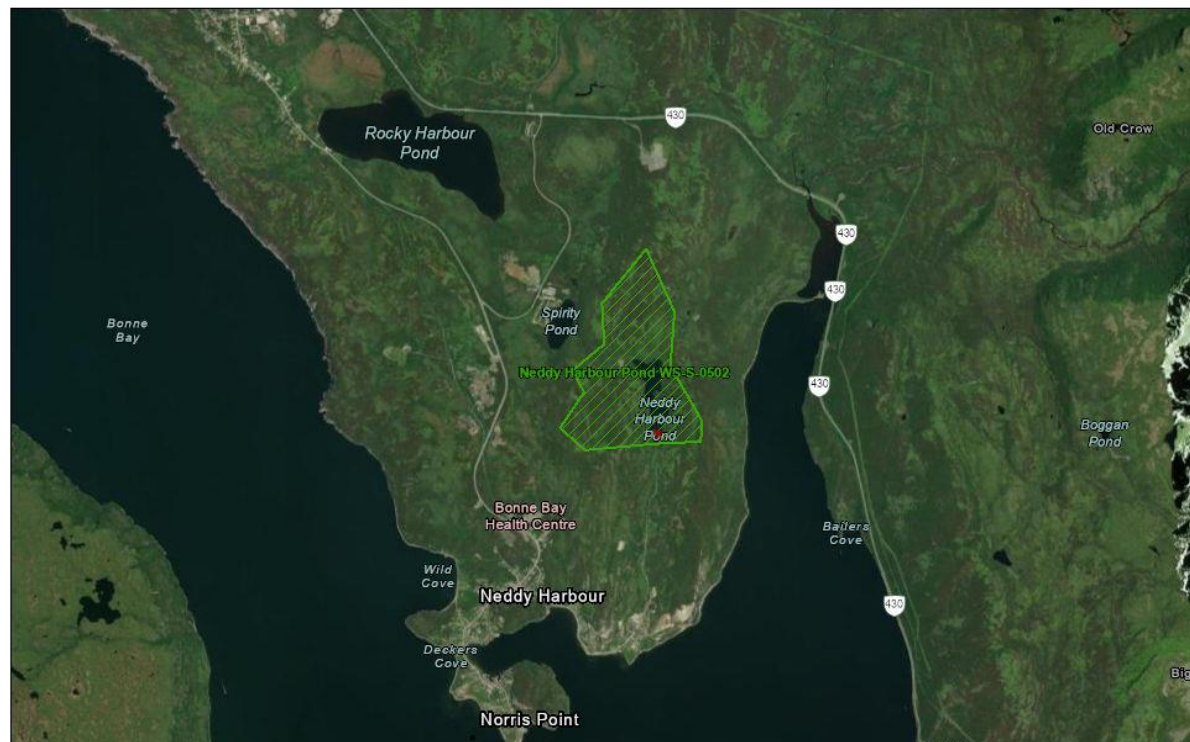
Fuel spill





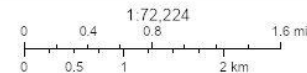
Finding a new source?

Norris Point



3/22/2024, 4:03:18 PM

- Communities
- Intakes / Wellheads
- Public Water Supplies
- Intakes
- Protected



Earthstar, Geographics, Esri, Canada, Esri, TomTom, Garmin, SafeGraph, METI/NASA, USGS, NRCan, Parks Canada

Earthstar, Geographics | <http://open.canada.ca/en/open-government-licence-canada> | Esri, Canada, Esri, TomTom, Garmin, SafeGraph, METI/NASA, USGS, NRCan, Parks Canada | ArcGIS Web AppBuilder



Alternatives to Gas Powered



Generators



Alternatives to Generators



Thank you.

Questions?

Contact Information

Eastern Region

Department of Environment and Climate Change
Water Resources Management Division
Confederation Building, West Block
Drinking Water Section
PO Box 8700
St. John's NL A1B 4J6
Tel: (709) 729-4817
Tel: (709) 729-7634

Central Region

Department of Environment and Climate Change
Water Resources Management Division
Provincial Building
3 Cromer Avenue
Grand Falls Windsor NL A2A 1W9
Tel: (709) 292-4280

Western and Labrador Region

Department of Environment and Climate Change
Water Resources Management Division
Sir Richard Squires Building
PO Box 2006
Corner Brook, NL A2H 6J8
Tel: (709) 637-2542

Wellhead Protected Water Supply Areas

Department of Environment and Climate Change
Water Resources Management Division
Confederation Building, West Block
Groundwater Resources Section
PO Box 8700
St. John's, NL A1B 4J6
Tel: (709) 729-1671
Tel: (709) 729-2539