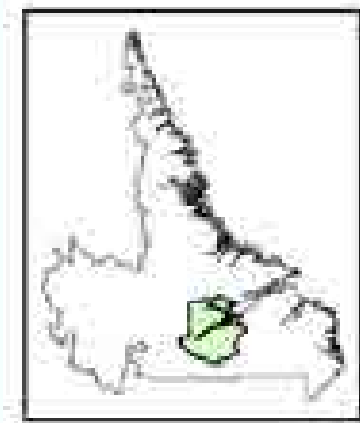







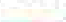


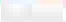


Map #61 19-S-22



2 year Operating Plan 2019-2021
Proposed Harvest Block # 19-S-22
Net Commercial Area: 12624 ha
Merchantable Volume: 11,684 m³

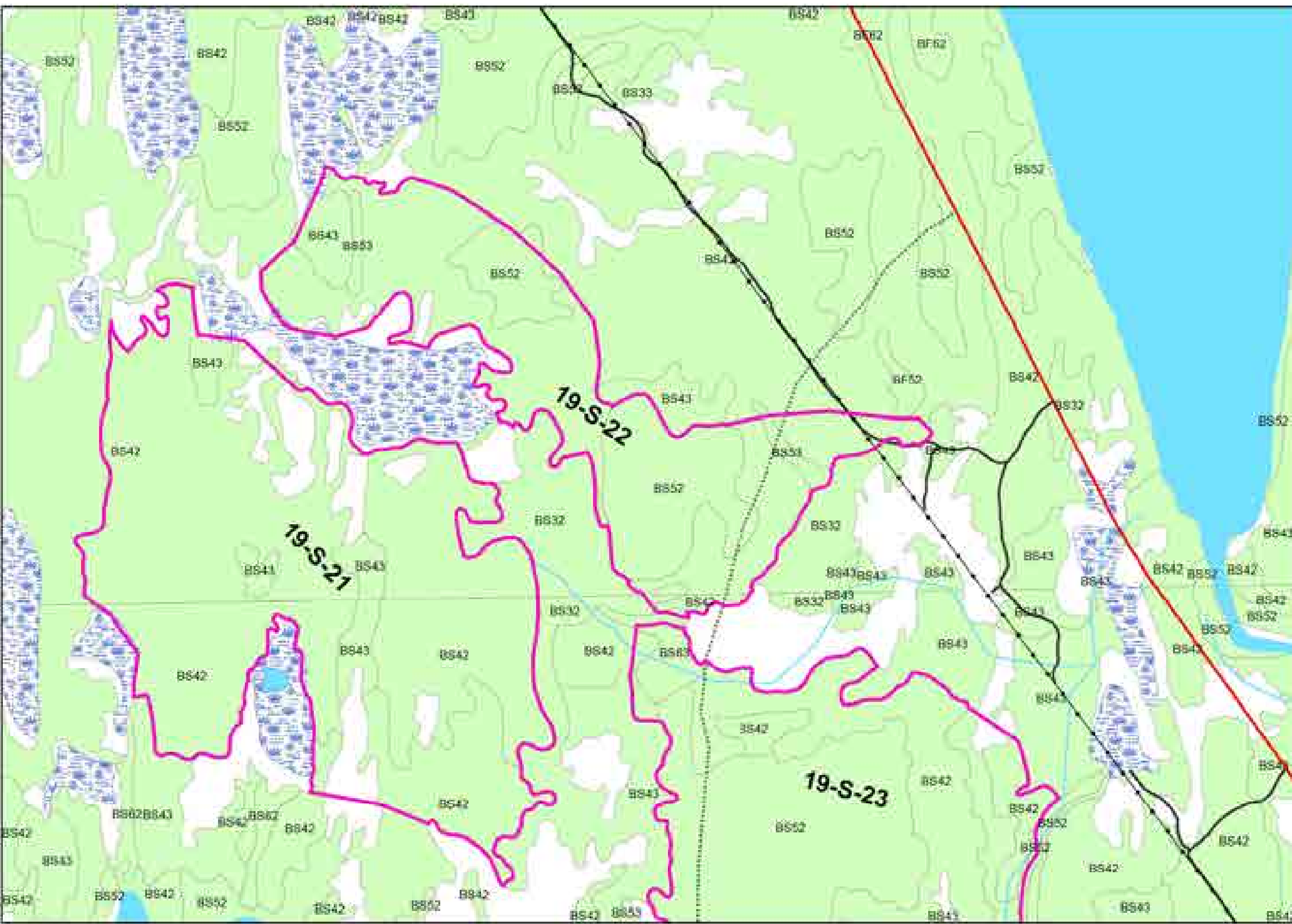


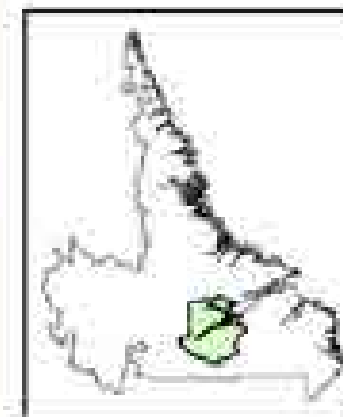
Legend

-  Proposed Roads
-  Roads
-  Forest Access Roads
-  Stream
-  Transmission Line
-  Snowmobile Trail
-  Commercial OA
-  Fir Cutting
-  Bog
-  Waterbody
-  Merchantable Timber

0 0.225 0.45 km

1:12,500





1 Year Operating Plan 2019-2021
Proposed Harvest Block # 19-S-23
Net Commercial Area: 115,04 ha
Merchantable Volume: 11,281 m³



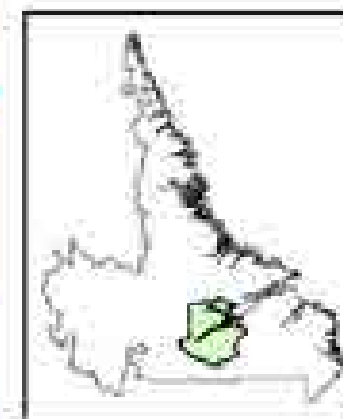
Legend

- Proposed Roads
- Roads
- Forest Access Roads
- Stream
- Transmission Line
- Snowmobile Trail
- Commercial CA
- No Cutting
- Bog
- Waterbody
- Merchantable Timber

0 0.225 0.45 km

1:12,500





2 year Operating Plan 2019-2021
Proposed Harvest Block # 19-S-24
Net Commercial Area: 118,17 ha
Merchantable Volume: 11,270 m³

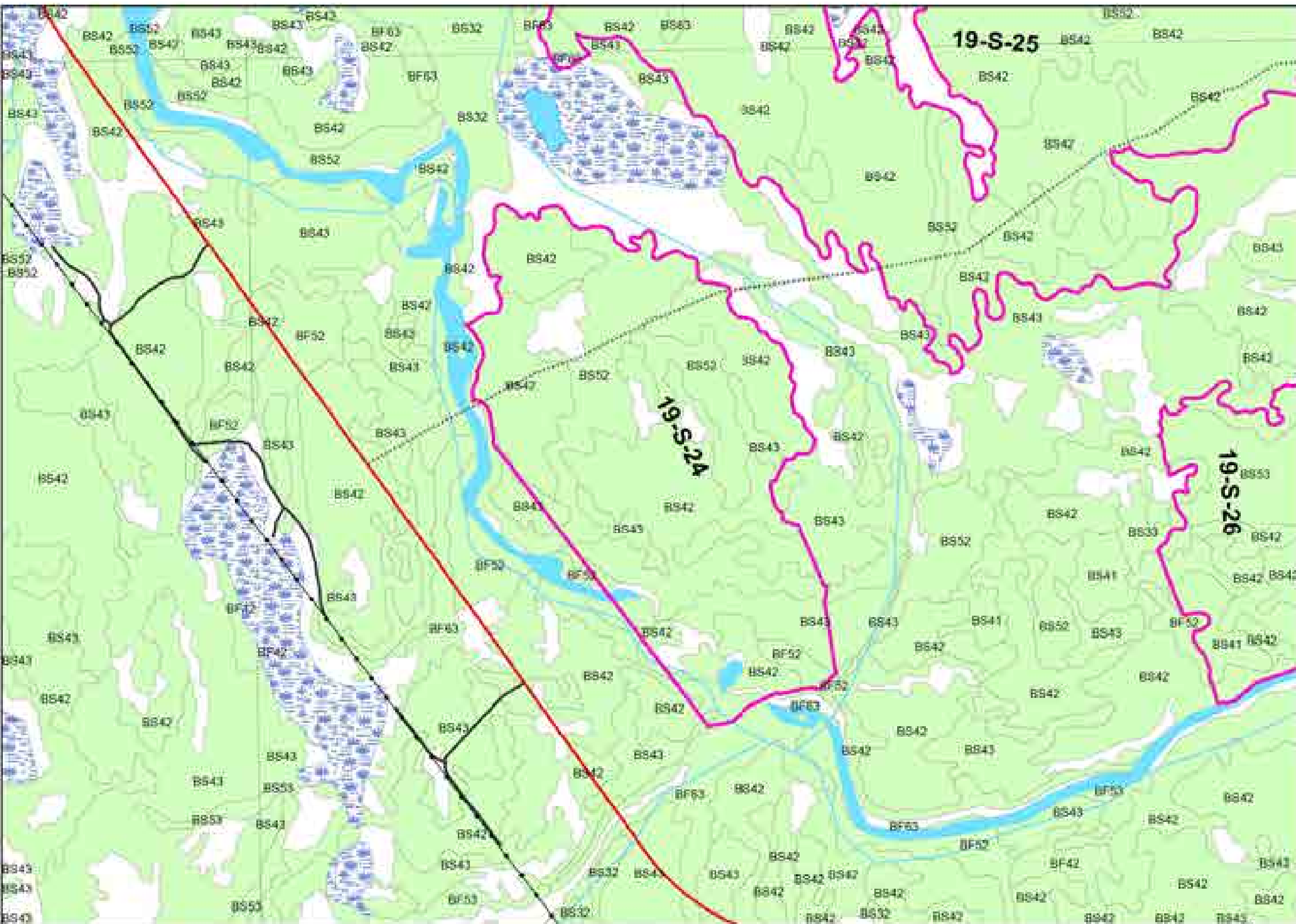


Legend

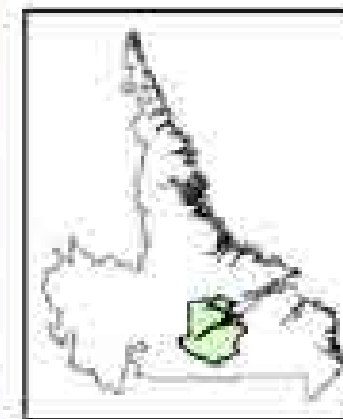
- Proposed Roads
- Roads
- Forest Access Roads
- Stream
- Transmission Line
- Snowmobile Trail
- Commercial CA
- Fir Cutting
- Bog
- Waterbody
- Merchantable Timber

0 0.225 0.45 km

1:12,500



Map #64 19-S-25



2 year Operating Plan 2019-2021
Proposed Harvest Block # 19-S-25
Net Commercial Area: 300.00 ha
Merchantable Volume: 22,288 m³

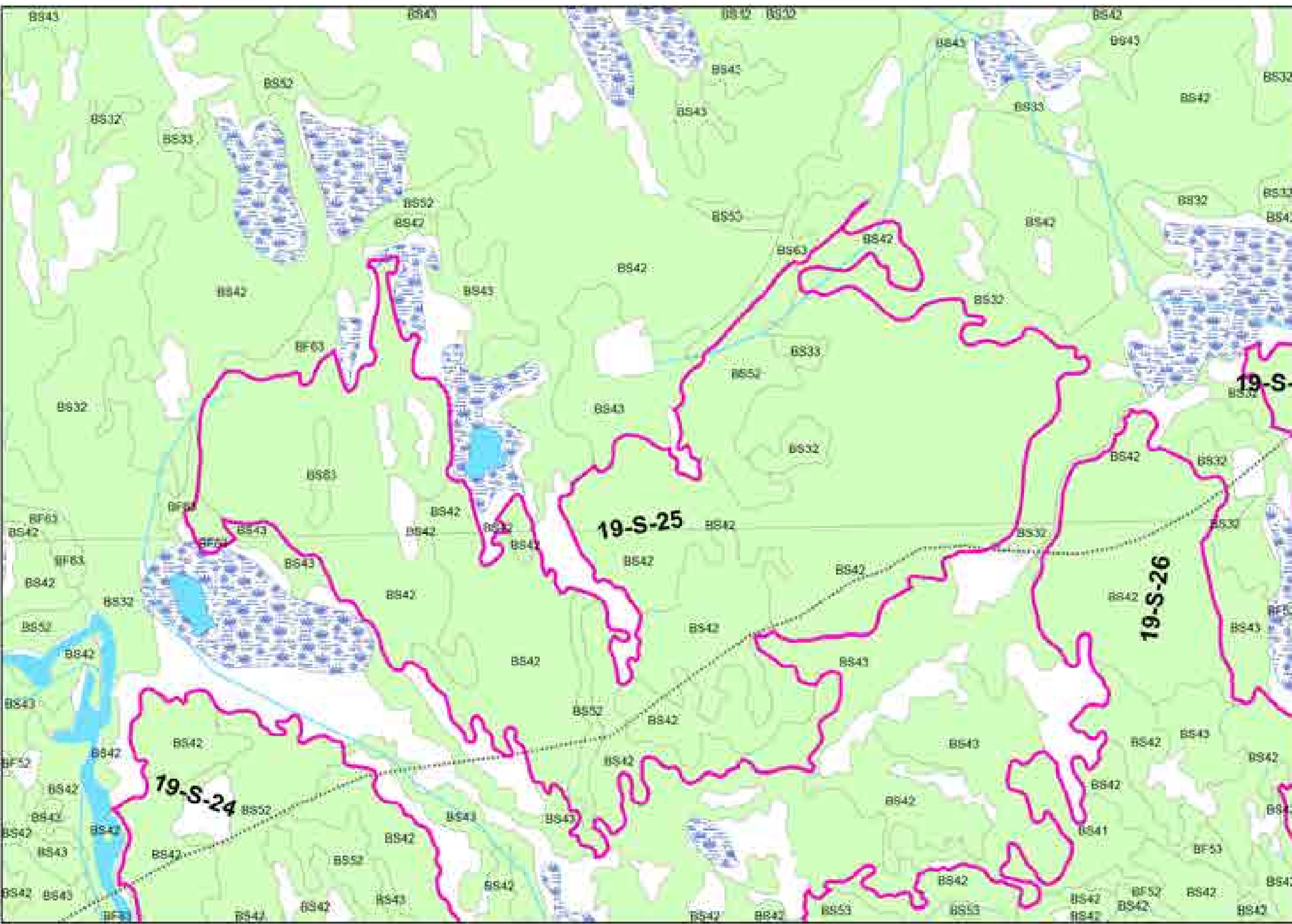


Legend

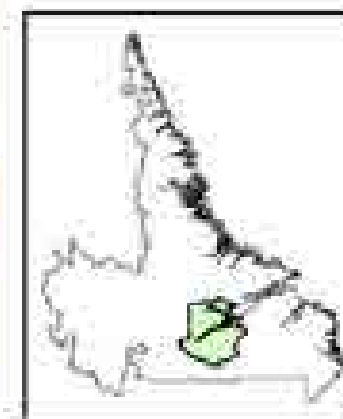
- Proposed Roads
- Roads
- Forest Access Roads
- Stream
- Transmission Line
- Snowmobile Trail
- Commercial CA
- No Cutting
- Bog
- Waterbody
- Merchantable Timber

0 0.225 0.45 km

1:12,500



Map #65 19-S-26



3 year Operating Plan: 2019-2021
Proposed Harvest Block # 19-S-26
Net Commercial Area: 205.84 ha
Merchantable Volume: 24,218 m³



Legend

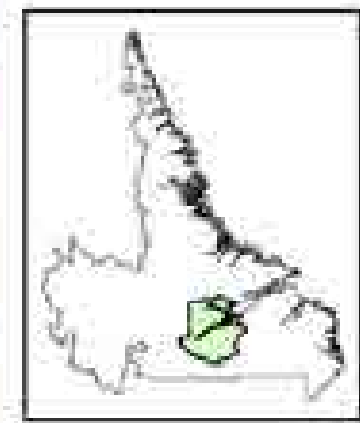
- Proposed Roads
- Roads
- Forest Access Roads
- Stream
- Transmission Line
- Snowmobile Trail
- Commercial CA
- Fir Cutting
- Bog
- Waterbody
- Merchantable Timber

0 0.225 0.45 km

1:12,500



Map #66 19-S-27



1 year Operating Plan 2019-2021
Proposed Harvest Block # 19-S-27
Net Commercial Area: 177.35 ha
Merchantable Volume: 18,827 m³

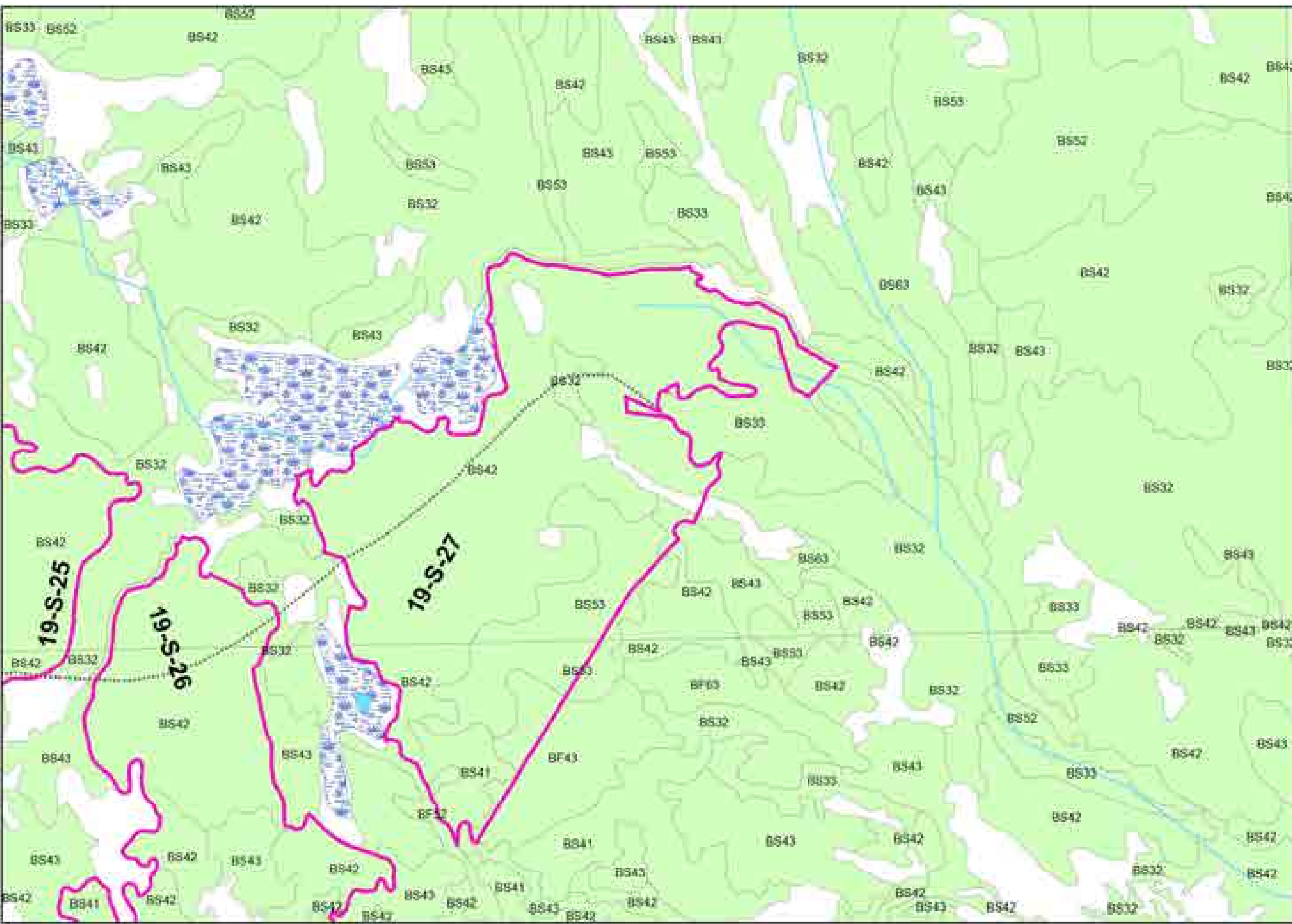


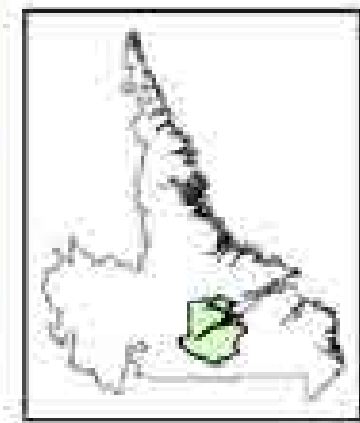
Legend

- Proposed Roads
- Roads
- Forest Access Roads
- Stream
- Transmission Line
- Snowmobile Trail
- Commercial CA
- Fir Cutting
- Bog
- Waterbody
- Merchantable Timber

0 0.225 0.45 km

1:12,500





1 Year Operating Plan 2019-2021
Proposed Harvest Block # 19-S-28
Net Commercial Area: 183.38 ha
Merchantable Volume: > 24,889m³



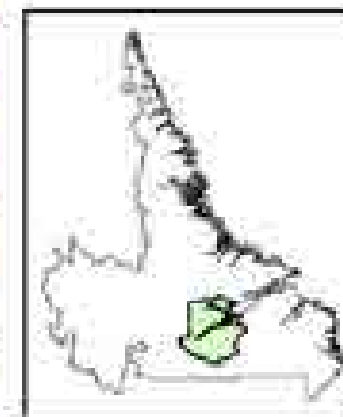
Legend

- Proposed Roads
- Roads
- Transmission Line
- Stream
- Forest Access Roads
- Snowmobile Trail
- Commercial CA
- Fir Cutting
- Waterbody
- Bog
- Merchantable Timber

0 0.225 0.45 km

1:12,500





2 Year Operating Plan 2019-2021
Proposed Harvest Block # 19-S-30
Net Commercial Area: 98.13 ha
Merchantable Volume: 8,848 m³

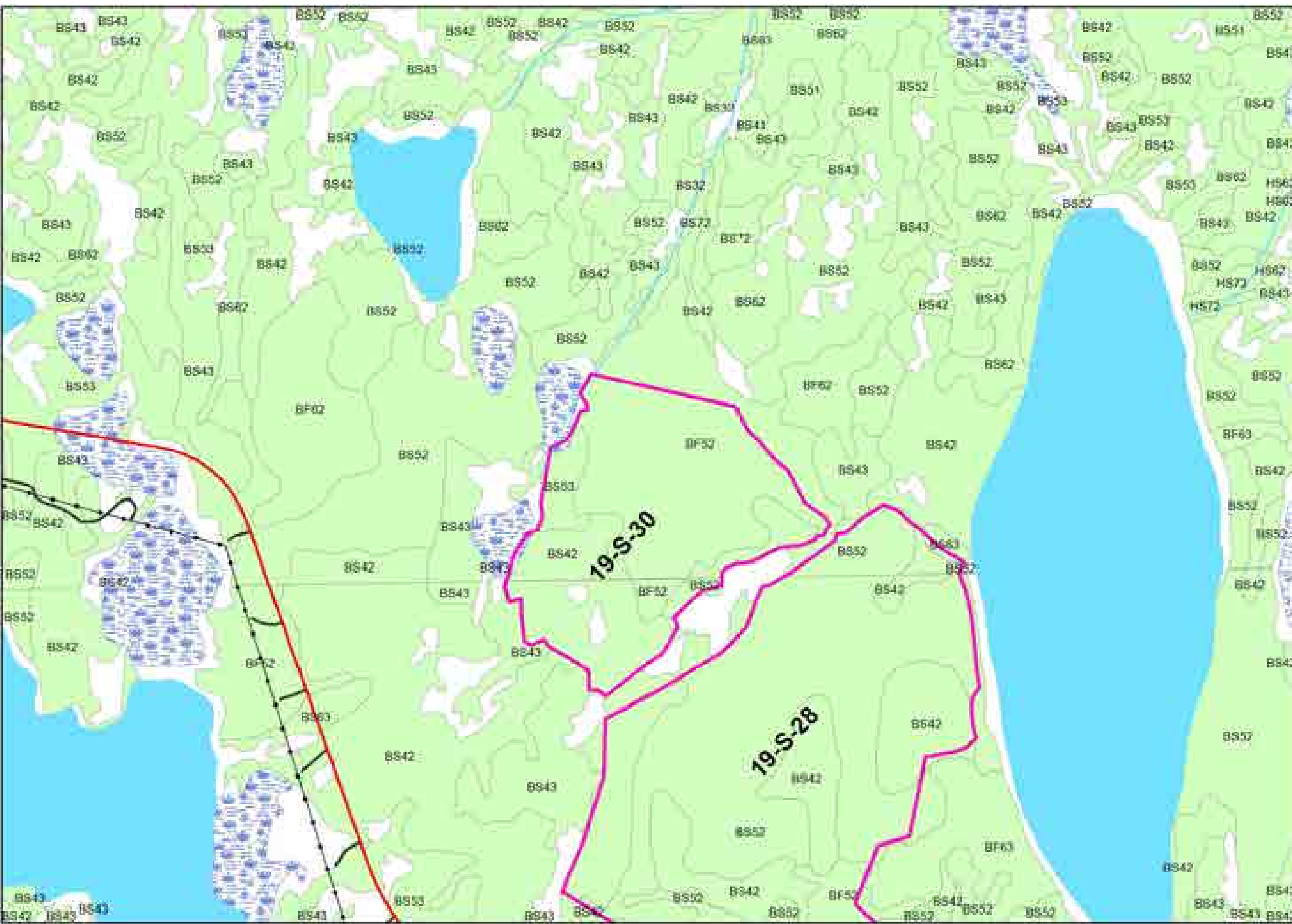


Legend

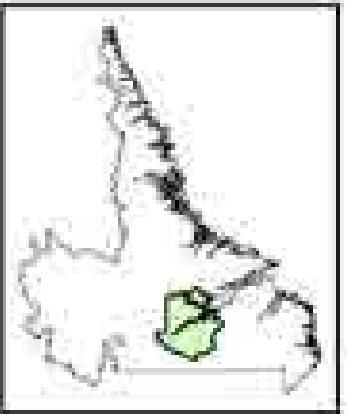
- Proposed Roads
- Roads
- Transmission Line
- Stream
- Forest Access Roads
- Snowmobile Trail
- Commercial CA
- Fir Cutting
- Waterbody
- Bog
- Merchantable Timber

0 0.225 0.45 km

1:12,500



Map #69
Lower Churchill Development

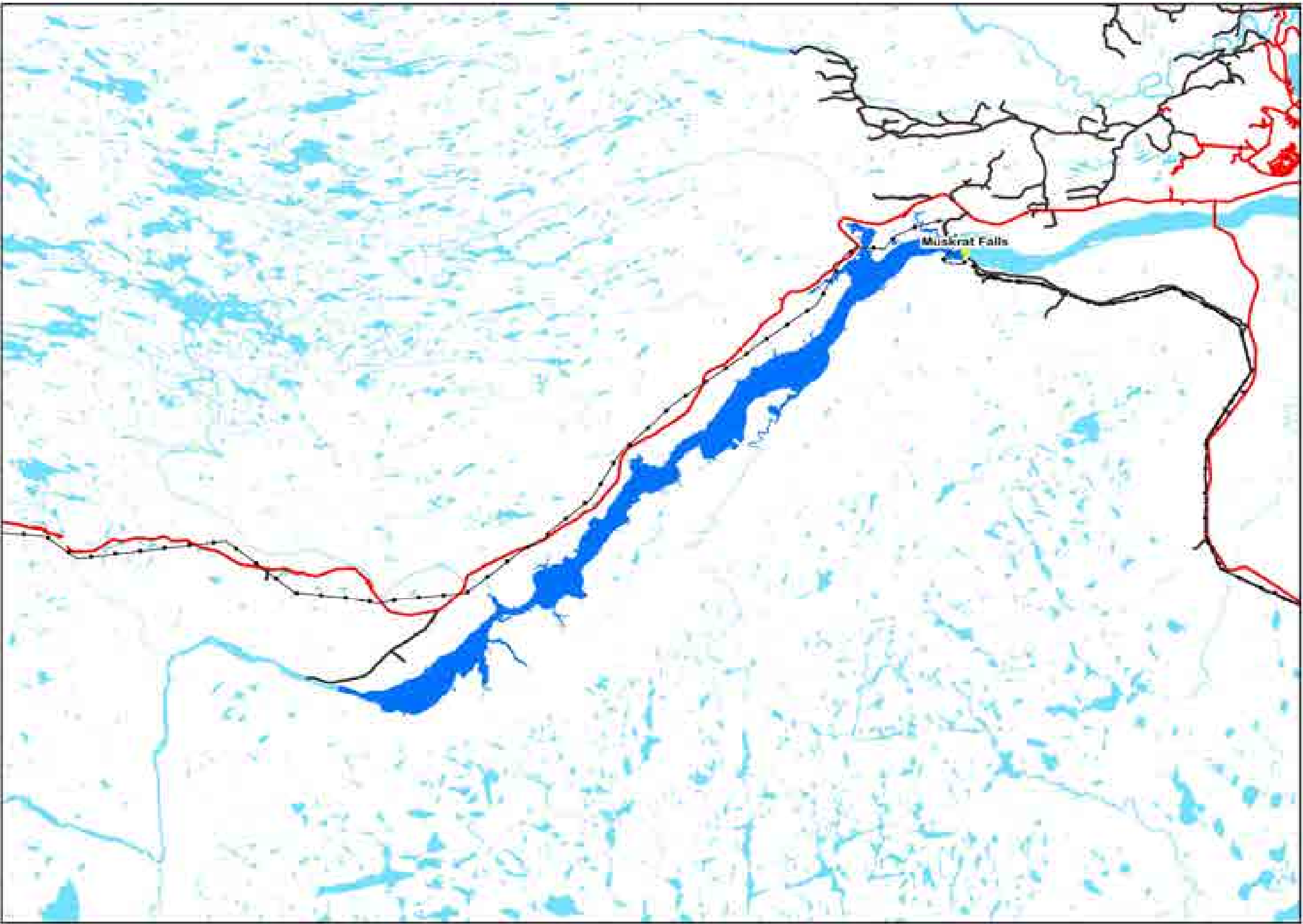


Legend

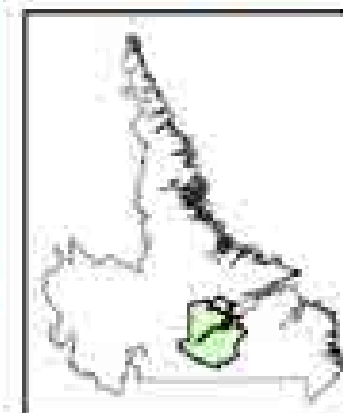
- Transmission Line
- Forest Access Roads
- Roads
- Muskrat Falls Reservoir
- Waterbody

0 4.5 9 km

1:12,500



Map #70
Domestic Harvest
Areas FMD 19a
5 Year Operating
Plan 2023 - 2027



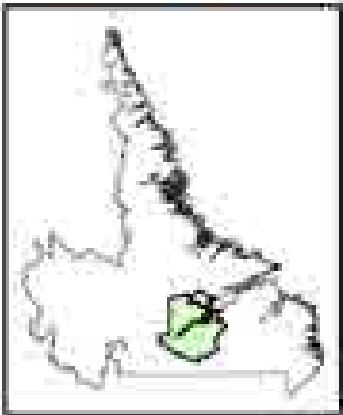
- Legend**
- Roads
 - Snowmobile Trail
 - Domestic Cut Blocks
 - No Cutting
 - Waterbody
 - MMNPR
 - District 19A

0 5 10
 km

1:12,500



Map #71 FMD 19a
Proposed Forest
Access Roads
5 Year Operating
Plan 2023 - 2027



Mealy Mountains National Park Reserve

Legend

- Proposed Roads
- Roads
- Waterbody
- MMNPR
- District 19A

0 5 10 km

1:350,000

