

Xylem Flygt Pump Stations

Safety Tip – Task PPE

Are you wearing the right PPE for the task?

Working on site / pumps has some minimum requirements but what tasks are staff undertaking?

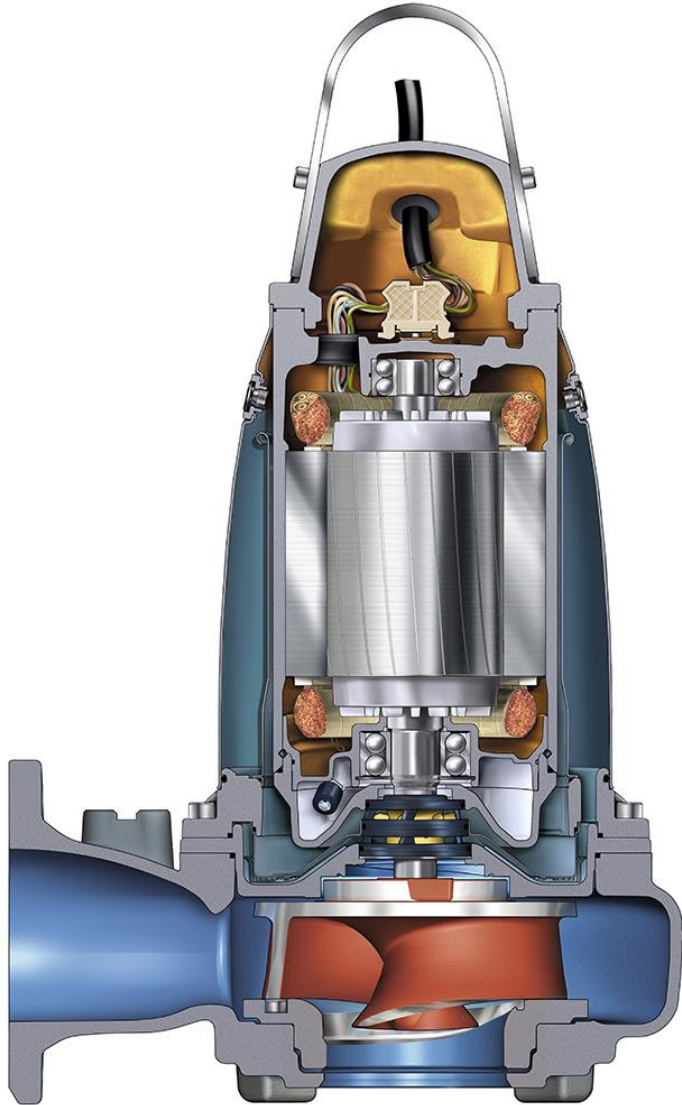
Examples

- | | |
|----------------|-----------------------------|
| Handling tasks | – Gloves |
| Noisy Tools | – Hearing Protection |
| Grinding | – Goggles / Dust Mask |
| Wood Working | – Goggles / Dust Mask |
| Pump Washing | – Goggles / Mask / Wet Suit |
| Hiab / Cranes | – Hard Hat |



Always ask what you should be wearing!

Flygt N 3000 Pump



Drive Unit

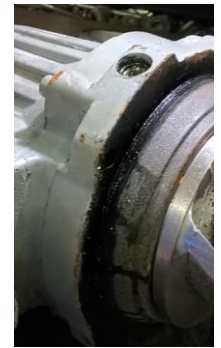
- Motor
- Sealings
- Internal cooling system
- Sensors
- Electrical connections

Hydraulic End

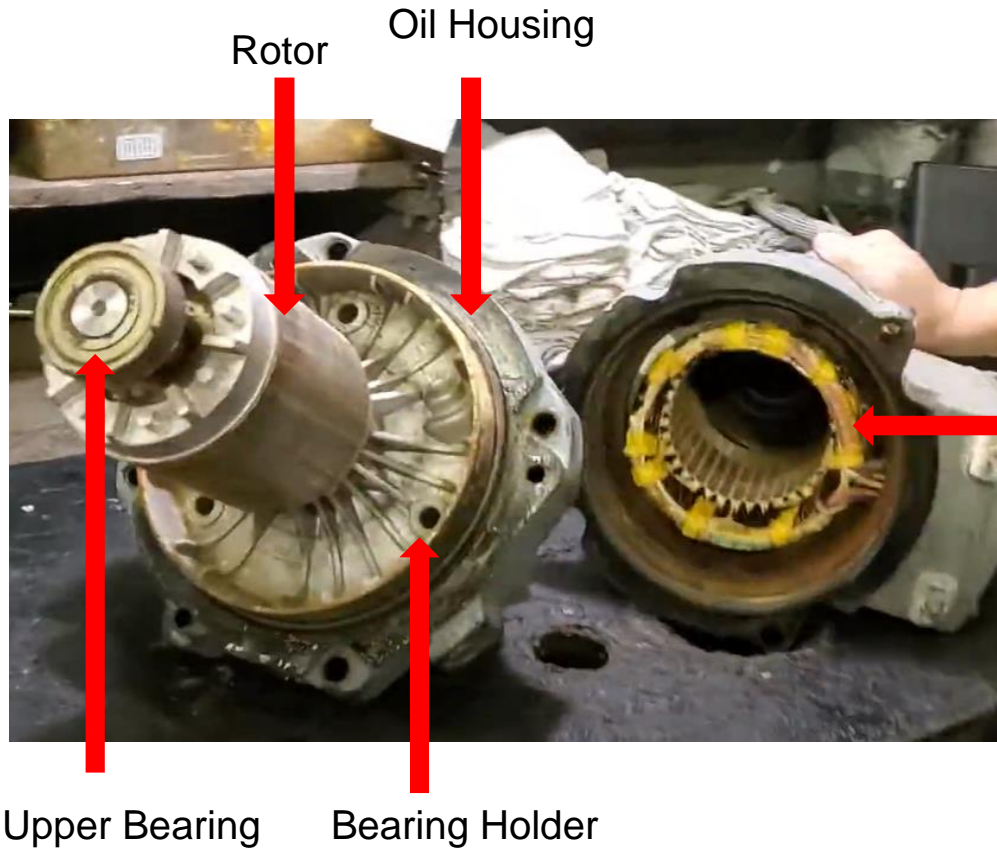
- Impeller
- Pump Housing / Volute
- Insert ring
- Inlet and outlet

N-Technology Hydraulic End

Working together for higher efficiency



Flygt – Drive Units motors



Drive Unit

- Motor: Ensure optimal motor performance and extended motor lifetime

Mechanical Seals:

- Prevents leakage into the buffer chamber

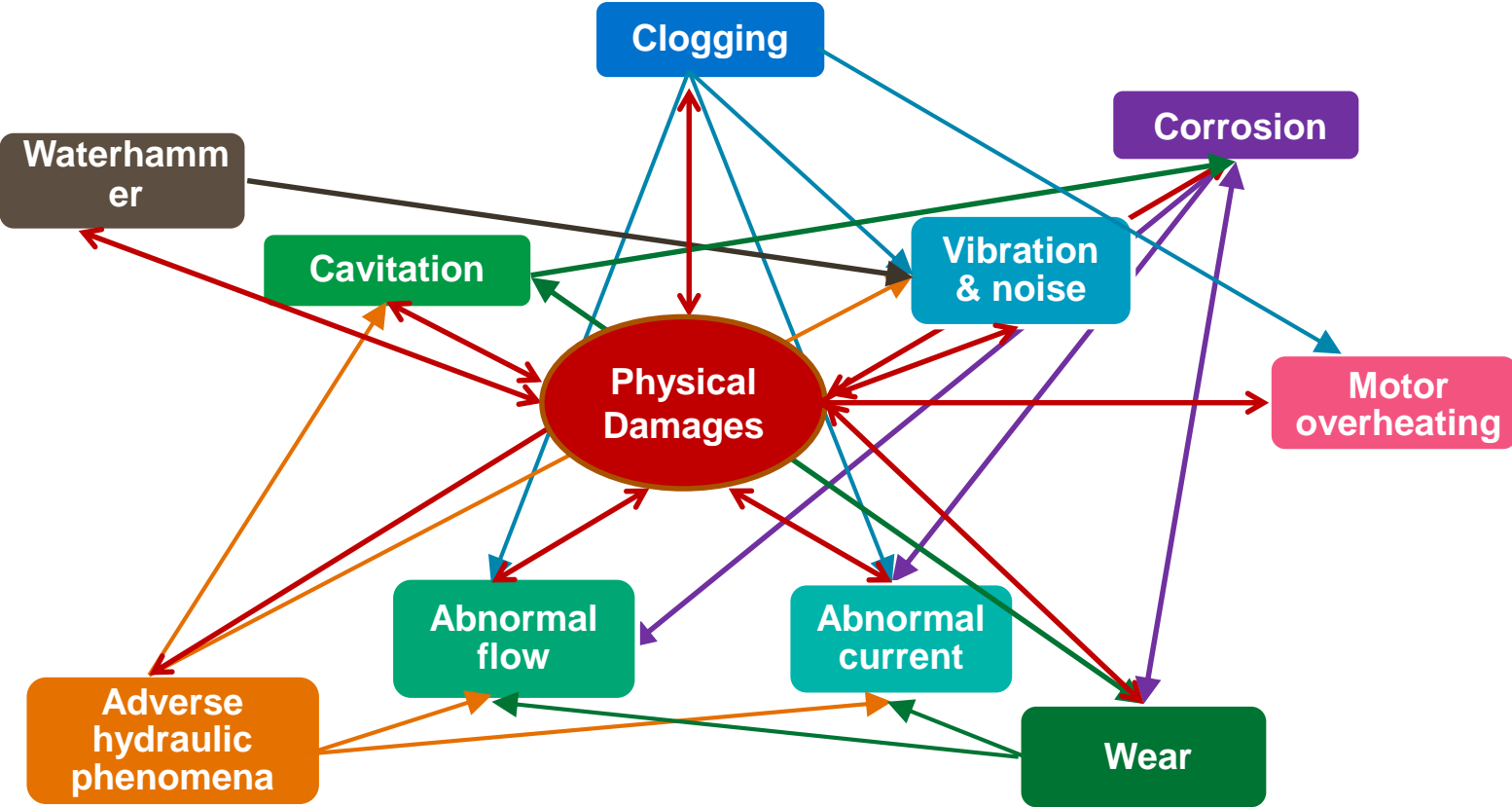




Logimac Control Panels

Common wastewater pump issues

Many pumps issues are related with each other



Logimac Overview



Float 1,2,3,4 failures alarms

Overload Trip Pumps #1 & #2

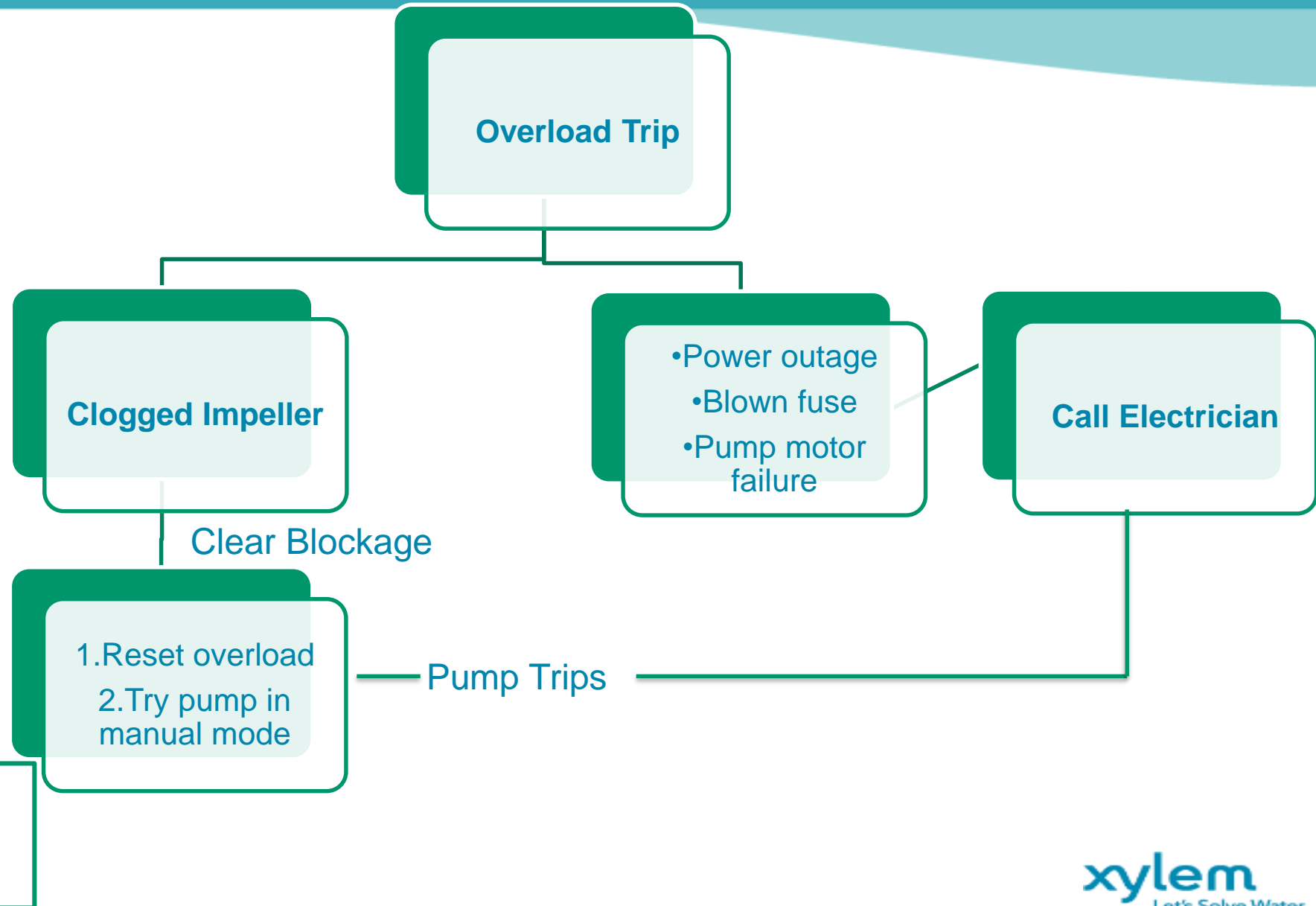
Pump Leakage

Pump Temp

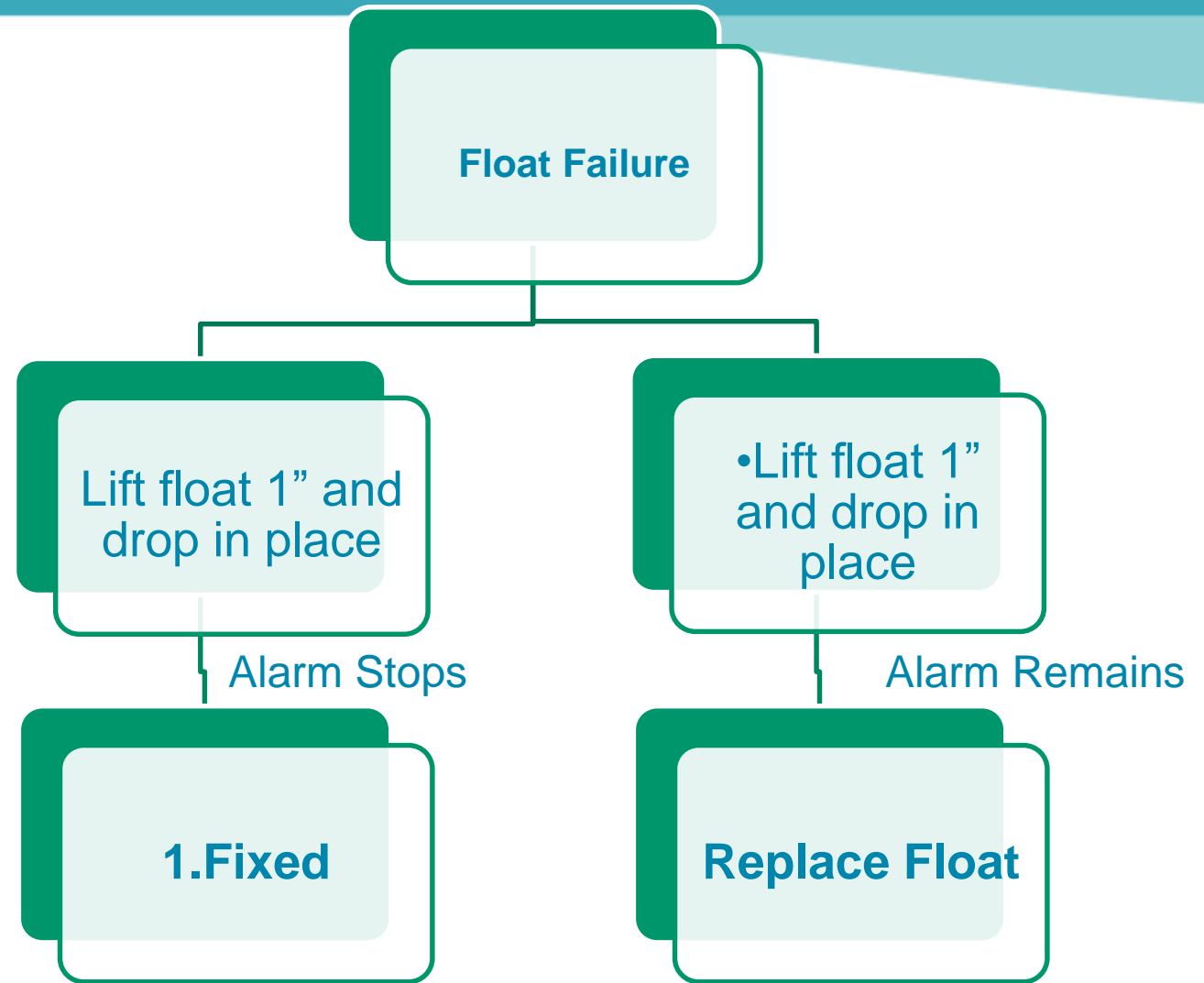
Pump Running = Green

High Level + Emergency Faults

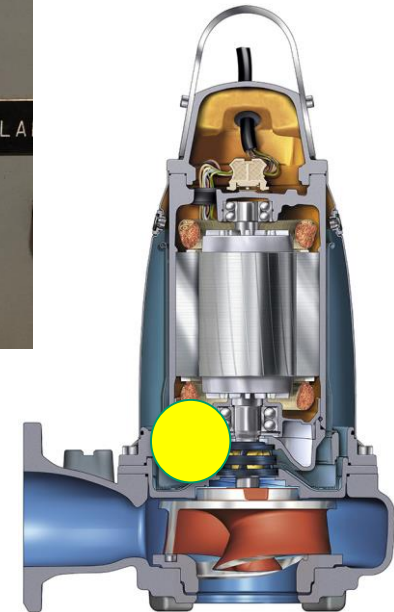
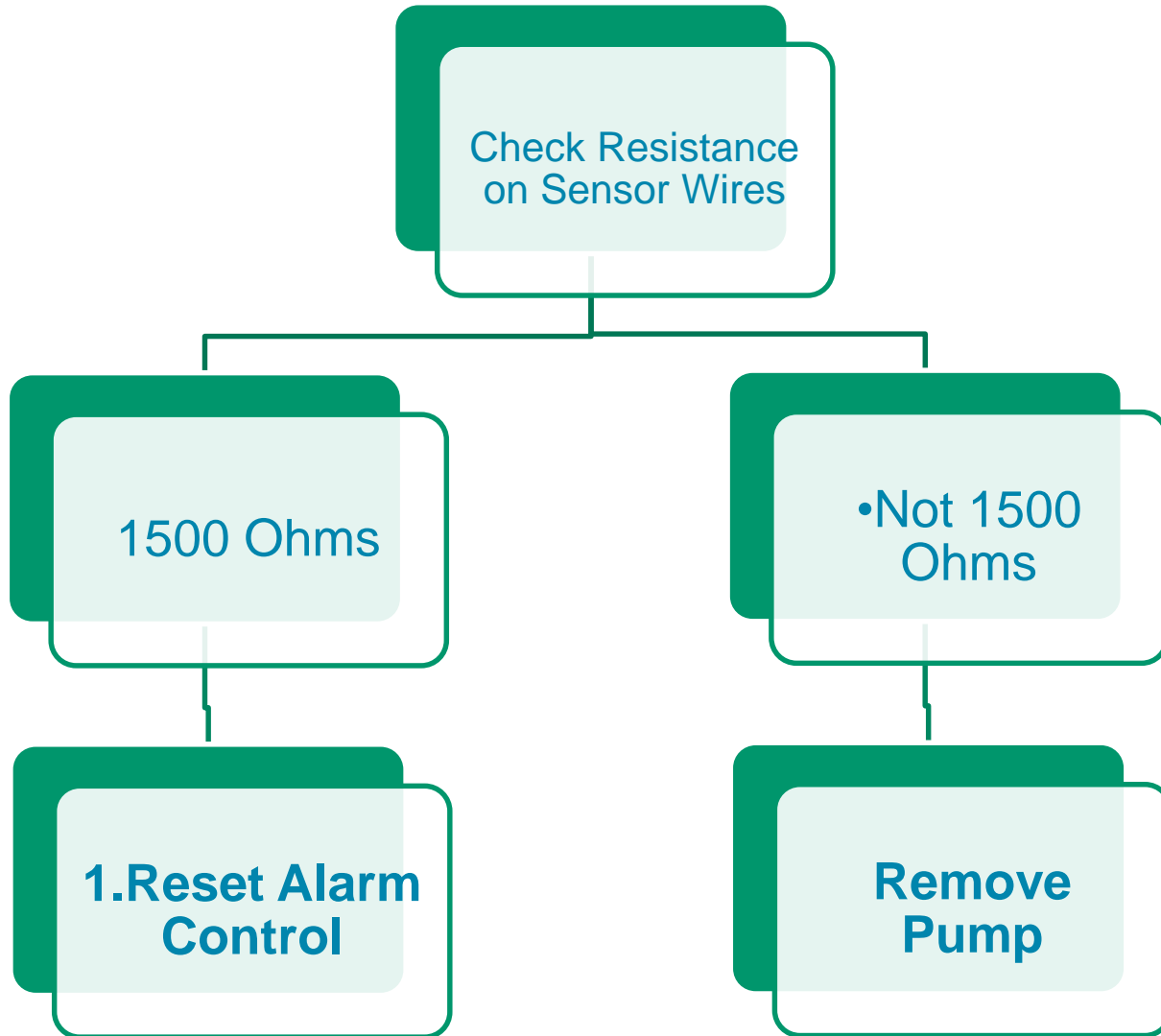
Troubleshooting – Emergency Light



Troubleshooting – Float Failure



Troubleshooting – Leakage / Temp



Wrong Impeller Rotation Direction

Result in:

- Less/no flow
- Less current/power consumption
- Low efficiency
- PL-pump jumped out of the column?!

Reason:

Wrong connection between electrical phases

Solution:

Invert two phases





Questions?