



Real-Time Water Quality 2021 Annual Report

Churchill River Network

May 26 to October 26, 2021



Government of Newfoundland & Labrador
Department of Environment and Climate Change
Water Resources Management Division

TABLE OF CONTENTS

| | |
|--|-----------|
| ACKNOWLEDGEMENTS | 3 |
| ABBREVIATIONS | 4 |
| HISTORY | 5 |
| MAINTENANCE AND CALIBRATION | 8 |
| QUALITY ASSURANCE AND QUALITY CONTROL | 8 |
| DATA INTERPRETATION AND REVIEW | 10 |
| CHURCHILL RIVER BELOW METCHIN RIVER | 11 |
| CHURCHILL RIVER ABOVE GRIZZLE RAPIDS | 18 |
| CHURCHILL RIVER BELOW MUSKRAT FALLS | 25 |
| CHURCHILL RIVER AT ENGLISH POINT | 32 |
| STATION COMPARISON | 39 |
| CONCLUSIONS | 47 |
| PATH FORWARD | 48 |

Acknowledgements

The Real-Time Water Quality (RTWQ) monitoring network on the Churchill River is successful in tracking emerging water quality issues, as well as creating a database of baseline and post baseline water quality data due to the hard work and diligence of certain individuals. The management and staff of Nalcor work in cooperation with the management and staff of the Department of Environment and Climate Change (ECC), as well as Environment and Climate Change Canada (ECCC), to ensure the protection of ambient water resources in the Churchill River.

Employees with the Water Resources Management Division of the Department of ECC were integral in ensuring the smooth operation of such a technologically advanced network. WRMD staff was responsible for deployment and removal of instruments including cleaning, calibration, and maintenance, as well as preparation of monthly deployment reports for the 2021 season.

Water Survey of Canada staff with ECCC played an essential role in the data logging/communication aspect of the network. These individuals visited the site regularly to ensure the data logging equipment was operating properly and transmitting data efficiently. Finally, they played the lead role in dealing with hydrological quantity and flow issues.

Managers from each agency are fully committed to improving this network and ensuring it provides meaningful and accurate water quality/quantity data that can be used in decision-making processes. Throughout the summer and fall months of 2021, there was continued communication between ECC and Nalcor. This network is continually successful due to the participation and collaboration of all three agencies.

Abbreviations

| | |
|-----------|---|
| ECCC | Environment and Climate Change Canada |
| ECC | NL Department of Environment and Climate Change |
| CRbelowMR | Station at Churchill River below Metchin River |
| CRaboveGR | Station at Churchill River above Grizzle Rapids |
| CRbelowMF | Station at Churchill River below Muskrat Falls |
| CRatEngPt | Station at Churchill River at English Point |
| DO | Dissolved Oxygen |
| NL | Newfoundland and Labrador |
| QA/QC | Quality Assurance and Quality Control |
| RTWQ | Real-Time Water Quality |
| WRMD | Water Resources Management Division |
| %Sat | Percent Saturation |

History

- The RTWQ monitoring network on the Lower Churchill River was successfully established by ECC and ECCC in cooperation with Nalcor Energy in September 2008.
- The objective of the network is to identify and track emerging water quality or quantity management issues and ensure protection of ambient water resources along the Lower Churchill River. The information being collected will serve to monitor and assess water quality throughout the several phases of the Lower Churchill Hydroelectric Generation Project.
- The original network, established in 2008, consisted of 4 water quality/quantity monitoring stations along the Lower Churchill River from just below the confluence with Metchin River to just below Muskrat Falls. In addition, there were two water quantity monitoring stations on the Churchill River below the Tailrace and above Grizzle Rapids, which strictly recorded stage level continuously. There were also hydrometric stations on select tributaries to the Churchill River (ie. East Metchin River, Pinus River, Minipi River (Figure 1)).
- In 2011, ECC in cooperation with ECCC established another water quality/quantity monitoring station at the mouth of the Churchill River (Churchill River at English Point). This station is included in this annual report for comparison purposes (Figure 1). A water quantity station was also established at Lake Melville east of Little River in 2011.
- During the 2014 deployment year, one water quality/quantity monitoring station (Churchill River below Metchin River) and three water quantity monitoring stations (Churchill River above Churchill Falls Tailrace, East Metchin River below Highway Bridge and Minipi River below Minipi Lake) were discontinued as per changes to the Memorandum of Agreement between ECC and Nalcor. An additional water quantity monitoring station (Churchill River at Mid Pool) was added to the agreement in 2014.
- During the 2017 deployment year, several stations were reactivated or added to the Churchill River network. Stations at Churchill River below Metchin River and Churchill River above Churchill Falls Tailrace were reactivated. New stations at Churchill River below Churchill Falls Tailrace, Churchill River at Happy Valley, and Mud Lake at Mud Lake were installed. With the exception of Churchill River below Metchin River, these reactivated and new stations collect water quantity data only.
- Continuous monitoring at four water quality/quantity monitoring stations in the Lower Churchill River Network recommenced in spring 2021. This annual deployment report illustrates, discusses and summarizes water quality related events from May 26 to October 26, 2021. Instruments were generally deployed for 30-50 day intervals referred to as deployment periods.
- Monitoring at all stations began later than usual due to both logistical challenges with securing helicopter access, as well as the global Covid-19 pandemic. The station at above Muskrat Falls was not deployed during the 2021 season due to inaccessibility and safety concerns.
- Construction at the Muskrat Falls Hydroelectric Generation site began in 2013. In 2021, construction continued as the worksite neared completion. Work is scheduled to continue through 2022.

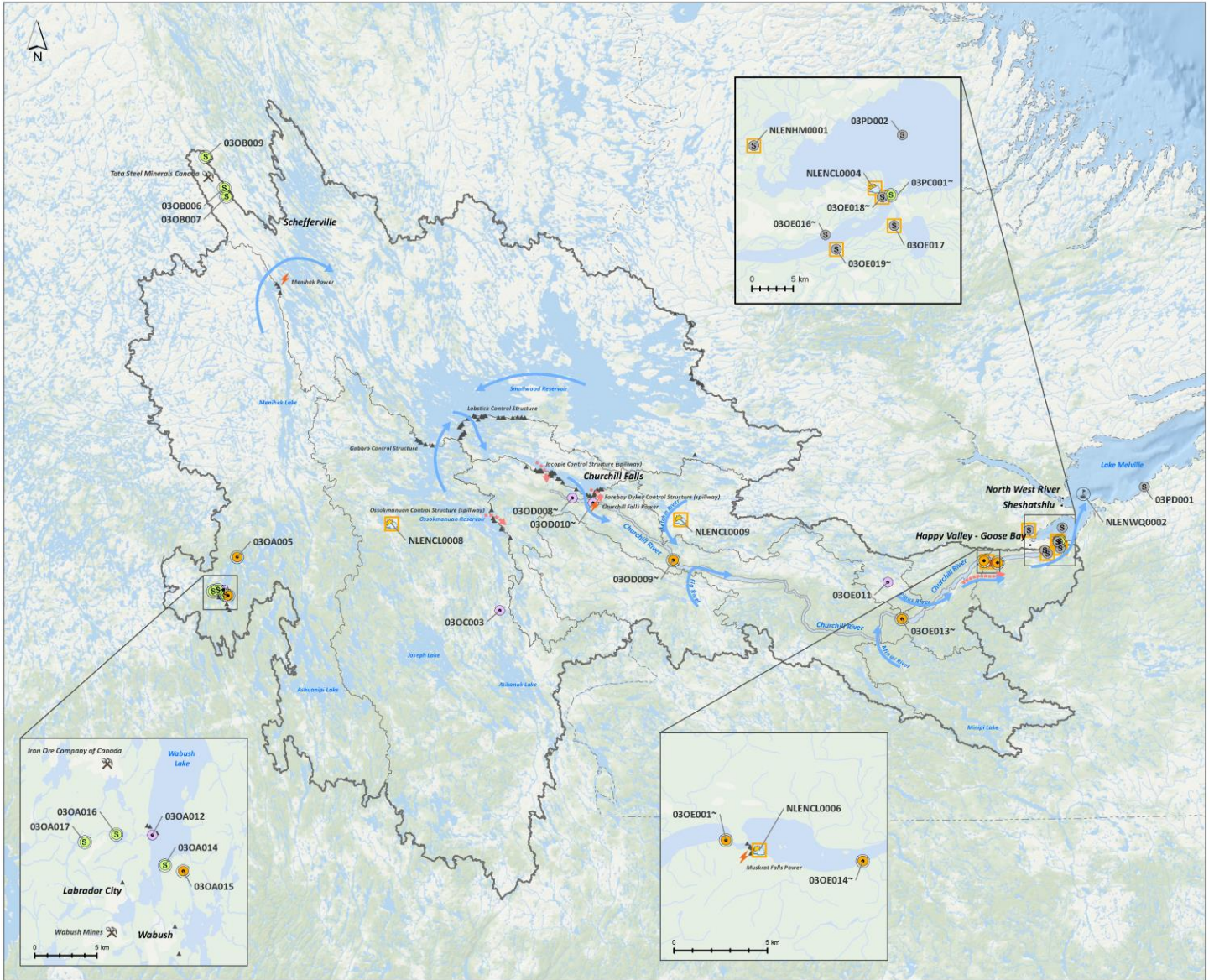


Figure 1: Churchill River Station Network Map

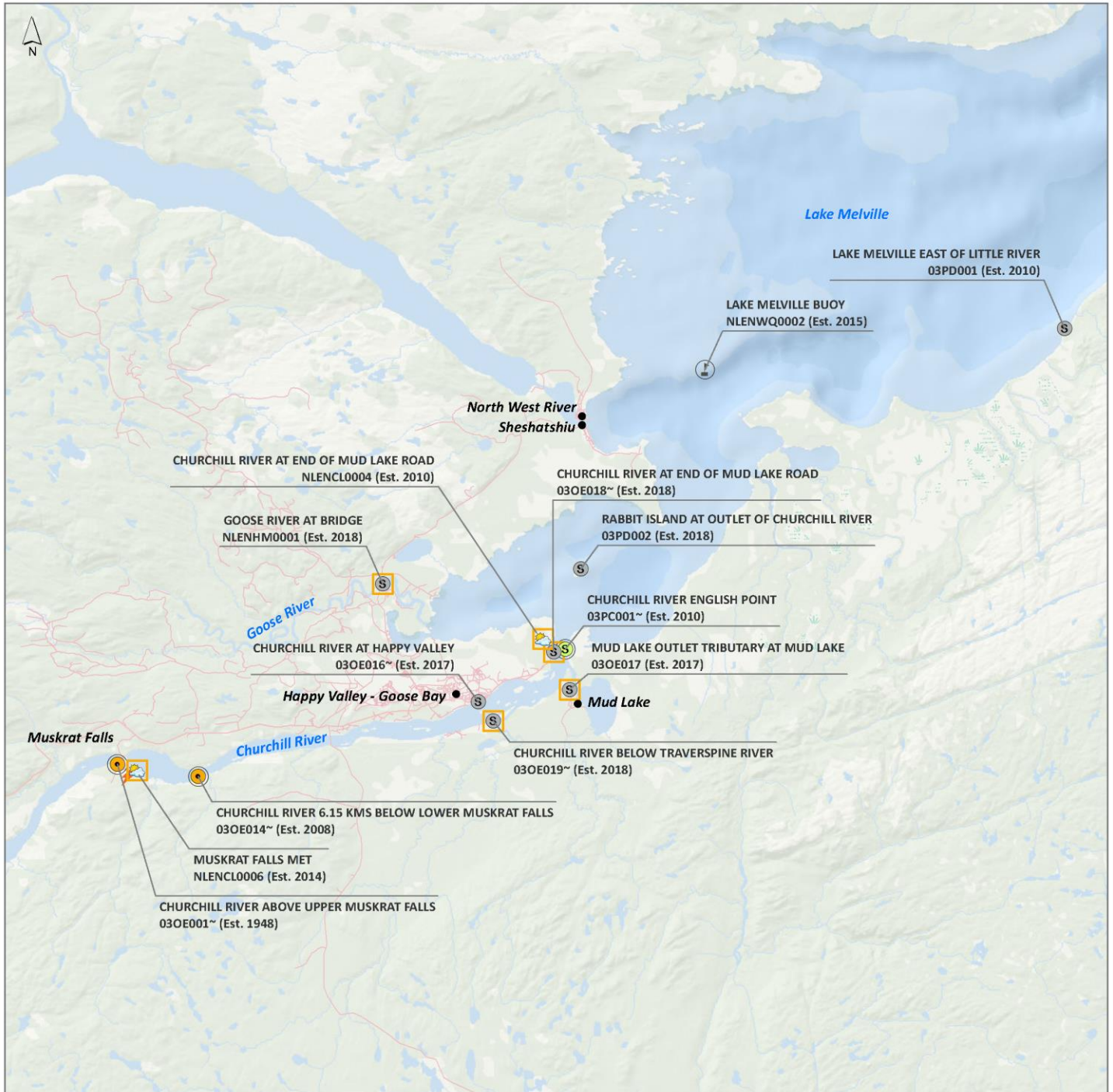


Figure 2: Lower Churchill River Network Station Map

Maintenance and Calibration

- Regular maintenance and calibration of the instruments is required to ensure data accuracy. This procedure is the responsibility of ECC staff and is performed generally every 30-50 days.
- Maintenance includes a thorough cleaning of the instrument and replacement of any small sensor parts that are damaged or unsuitable for reuse. Once the instrument is cleaned, ECC staff carefully calibrate each sensor attachment for pH, specific conductivity, dissolved oxygen and turbidity.
- Installation and removal dates for each station during the 2021 deployment season are summarized in Table 1.

Table 1: Installation and removal dates for 2021 deployment season

| Station | Initial Installation | Removal | Deployment Periods (days) |
|--------------------------------------|----------------------|------------|---------------------------|
| Churchill River below Metchin River | June 14 | October 12 | 44, 22, 42, 14 |
| Churchill River above Grizzle Rapids | May 28 | October 26 | 41, 42, 42, 28 |
| Churchill River below Muskrat Falls | May 26 | October 26 | 44, 41, 42, 28 |
| Churchill River at English Point | May 28 | October 26 | 42, 42, 42, 28 |

Quality Assurance and Quality Control

- As part of the Quality Assurance and Quality Control protocol (QA/QC), an assessment of the reliability of data recorded by an instrument is made at the beginning and end of the deployment period. The procedure is based on the approach used by the United States Geological Survey (USGS).
 - At deployment and removal, a QA/QC Instrument is temporarily deployed alongside the Field Instrument. Values for temperature, pH, conductivity, dissolved oxygen and turbidity are compared between the two instruments. Based on the degree of difference between parameters recorded by the Field Instrument and QA/QC Instrument at deployment and at removal, a qualitative statement is made on the data quality (Table 2).

Table 2: Ranking classifications for deployment and removal

| Parameter | Rank | | | | |
|---------------------------------|-----------|----------------|----------------|--------------|--------|
| | Excellent | Good | Fair | Marginal | Poor |
| Temperature (°C) | <=+/-0.2 | >+/-0.2 to 0.5 | >+/-0.5 to 0.8 | >+/-0.8 to 1 | <+/-1 |
| pH (unit) | <=+/-0.2 | >+/-0.2 to 0.5 | >+/-0.5 to 0.8 | >+/-0.8 to 1 | >+/-1 |
| Sp. Conductance (µS/cm) | <=+/-3 | >+/-3 to 10 | >+/-10 to 15 | >+/-15 to 20 | >+/-20 |
| Sp. Conductance > 35 µS/cm (%) | <=+/-3 | >+/-3 to 10 | >+/-10 to 15 | >+/-15 to 20 | >+/-20 |
| Dissolved Oxygen (mg/L) (% Sat) | <=+/-0.3 | >+/-0.3 to 0.5 | >+/-0.5 to 0.8 | >+/-0.8 to 1 | >+/-1 |
| Turbidity <40 NTU (NTU) | <=+/-2 | >+/-2 to 5 | >+/-5 to 8 | >+/-8 to 10 | >+/-10 |
| Turbidity > 40 NTU (%) | <=+/-5 | >+/-5 to 10 | >+/-10 to 15 | >+/-15 to 20 | >+/-20 |

- It should be noted that the temperature sensor on any instrument is the most important. All other parameters can be broken down into three groups: temperature dependent, temperature compensated and temperature independent. Because the temperature sensor is not isolated from the rest of the instrument the entire instrument must be at the same temperature before the sensor will stabilize. The values may take some time to climb to the appropriate reading; if a reading is taken too soon it may not accurately portray the water body.
- Comparison rankings for the Lower Churchill River stations during the 2021 deployment season are summarized in Table 3.
- For additional information and explanations of rankings, please refer to the monthly deployment reports.

Table 3: Comparison rankings for Lower Churchill River stations, 2021 deployment season

| Station | Date | Action | Temperature | pH | Specific Conductivity | Dissolved Oxygen | Turbidity | |
|--------------------------------------|--------------|------------|---|-----------|-----------------------|------------------|-----------|--|
| Churchill River below Metchin River | June 14 | Deployment | Good | Excellent | Excellent | Good | Excellent | |
| | July 27 | Removal | Instrument out of water, QA/QC ratings not possible | | | | | |
| | July 27 | Deployment | Excellent | Excellent | Excellent | Excellent | Poor | |
| | | Removal | Instrument not removed | | | | | |
| | | Deployment | Deployed July 27 – October 12 | | | | | |
| | | Removal | Deployed July 27 – October 12 | | | | | |
| | | Deployment | Deployed July 27 – October 12 | | | | | |
| | October 12 | Removal | Excellent | Excellent | Excellent | Excellent | Poor | |
| Churchill River above Grizzle Rapids | May 26 | Deployment | Excellent | Good | Excellent | Excellent | Excellent | |
| | July 7 | Removal | Excellent | Good | Excellent | Excellent | Excellent | |
| | July 7 | Deployment | Excellent | Excellent | Excellent | Excellent | Excellent | |
| | August 17 | Removal | Excellent | Excellent | Excellent | Good | Excellent | |
| | August 17 | Deployment | Excellent | Good | Excellent | Excellent | Excellent | |
| | | Removal | Instrument not removed | | | | | |
| | | Deployment | Deployed August 17 – October 26 | | | | | |
| | October 26 | Removal | Good | Good | Excellent | Good | Excellent | |
| Churchill River below Muskrat Falls | May 26 | Deployment | Good | Good | Excellent | Marginal | Poor | |
| | July 8 | Removal | Good | Excellent | Excellent | Excellent | Poor | |
| | July 8 | Deployment | Excellent | Excellent | Excellent | Excellent | Fair | |
| | August 17 | Removal | Excellent | Excellent | Excellent | Good | Excellent | |
| | August 17 | Deployment | Excellent | Good | Excellent | Excellent | Excellent | |
| | | Removal | Instrument not removed | | | | | |
| | | Deployment | Deployed August 17 – October 26 | | | | | |
| | October 26 | Removal | Excellent | Good | Excellent | Good | Excellent | |
| Churchill River at English Point | May 28 | Deployment | Excellent | Good | Excellent | Poor | Fair | |
| | July 8 | Removal | Excellent | Excellent | Excellent | Good | Poor | |
| | July 8 | Deployment | Good | Good | Excellent | Excellent | Fair | |
| | August 18 | Removal | Excellent | Excellent | Good | Good | Excellent | |
| | August 18 | Deployment | Excellent | Good | Good | Excellent | Excellent | |
| | September 28 | Removal | Good | Excellent | Excellent | Excellent | Excellent | |
| | September 28 | Deployment | Excellent | Good | Good | Fair | Good | |
| | October 26 | Removal | Good | Excellent | Marginal | Fair | Good | |

Data Interpretation and Review

- The following graphs and discussions illustrate significant water quality-related trends from May 26 to October 26 throughout the Churchill River network. In this summary of all 2021 deployment periods, general patterns will be discussed. For more detailed analysis and discussion of specific events, please refer to the monthly deployment reports.
- With the exception of water quantity data (stage and flow), all data used in the preparation of the graphs and subsequent discussion below adhere to stringent QA/QC protocol.
- Water Survey of Canada (ECCC) is responsible for QA/QC of water quantity data (stage and flow). Corrected data can be obtained upon request.
- For a general comparison, 2019 and 2020 data have been included (where available) to show trends in water quality on the Churchill River over the previous 3 years.
- Summary statistics are calculated using the entire data set. This means that the number of values used to calculate the median, minimum, and maximum vary from year to year, and from station to station, depending on the length of the deployment season.

Churchill River below Metchin River

Temperature

- Over the 2021 deployment season, water temperature ranged from 7.8°C to 18.9°C, with a median value of 14.2°C (Figure 3).
- At this station, temperature increased throughout the summer months until mid-August, and then temperatures appropriately dropped through September and October.
- Instrument was out of the water from July 20 – July 27 due to dropping water levels, resulting in skewed data, which has been removed as it does not accurately reflect the water quality data of this station.

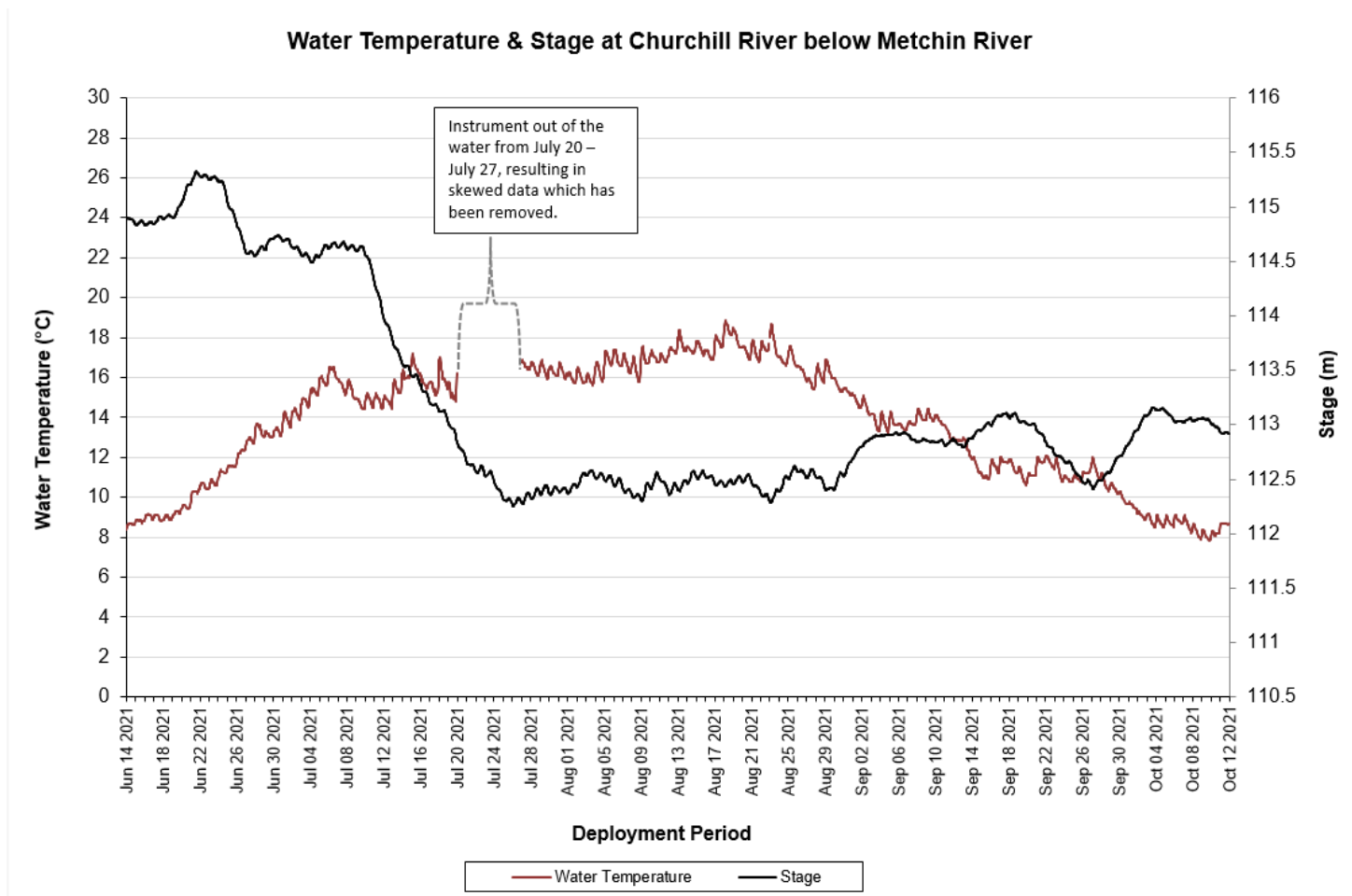


Figure 3: Water Temperature & Stage at Churchill River below Metchin River

| Temperature (°C) | 2021 | 2020 | 2019 |
|------------------|------|-------|------|
| Min | 7.8 | 1.4 | 3.7 |
| Max | 18.9 | 21.1 | 17.2 |
| Median | 14.2 | 13.55 | 10.1 |

- Water temperature values showed a typical seasonal trend and closely correlated with ambient air temperatures. Water and air temperatures both increased from the start of the summer season then decreased from mid-August through the fall months (Figure 4). Air temperature data was obtained from the Metchin River near TLH climate station.

Water Temperature & Air Temperature at Churchill River below Metchin River

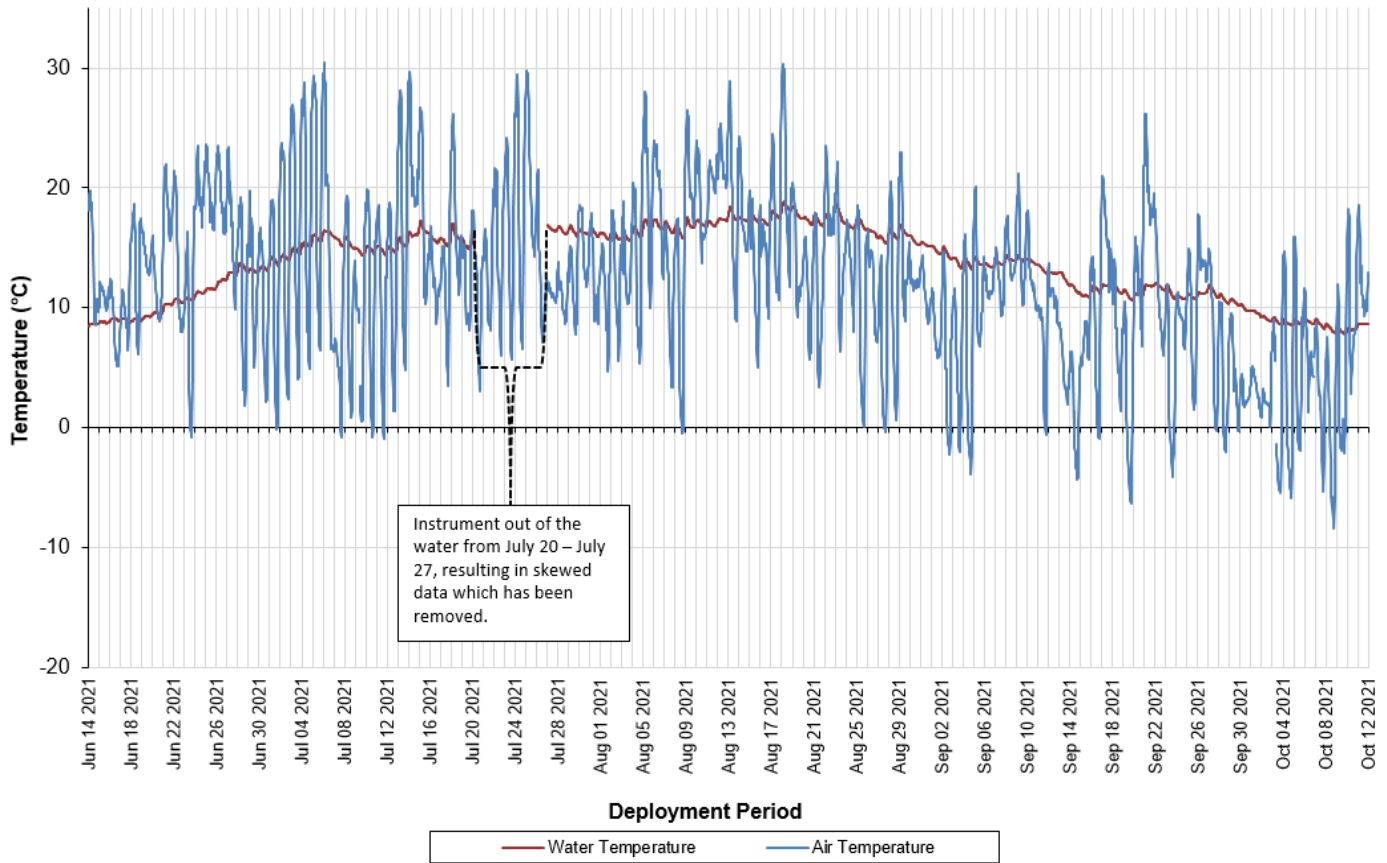


Figure 4: Water Temperature & Air Temperature at Churchill River below Metchin River

pH

- Over the 2021 deployment season, pH ranged from 5.65 to 7.17 pH units, with a median value of 7.00 pH units (Figure 5).
- pH values were relatively consistent over most of the deployment season, with clear diurnal fluctuation.
- pH values towards the end of the deployment period decreased from the start of September going below and outside the threshold for the CCME’s Guidelines for the Protection of Aquatic Life (>6.5 and <9.0 pH units). This is likely the result of sensor drift due to an extended deployment period.
- Instrument was out of the water from July 20 – July 27 due to dropping water levels, resulting in skewed data, which has been removed as it does not accurately reflect the water quality data of this station.

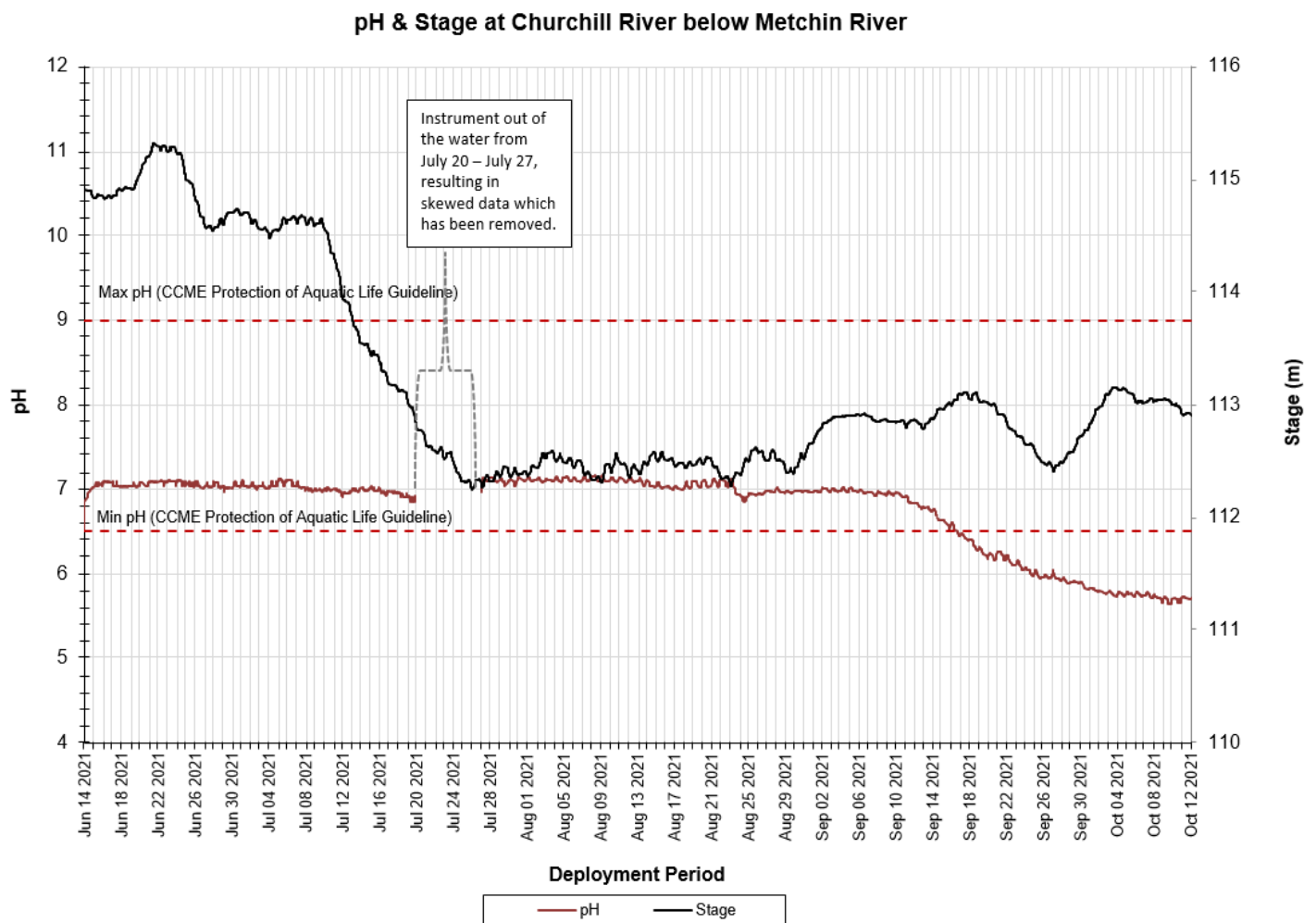


Figure 5: pH & Stage at Churchill River below Metchin River

| pH (units) | 2021 | 2020 | 2019 |
|------------|------|------|------|
| Min | 5.65 | 6.70 | 5.79 |
| Max | 7.17 | 7.19 | 7.23 |
| Median | 7.00 | 7.00 | 6.98 |

Specific Conductivity

- Over the 2021 deployment season, specific conductivity ranged from 17.9 $\mu\text{S}/\text{cm}$ to 35.9 $\mu\text{S}/\text{cm}$, with a median value of 20.3 $\mu\text{S}/\text{cm}$ (Figure 6), which was very similar to previous years.
- Specific conductivity increased at the beginning of the deployment season, staying relatively stable through August, and then decreased slightly for the remainder of deployment. Instrument was out of the water from July 20 – July 27 due to dropping water levels, resulting in skewed data, which has been removed as it does not accurately reflect the water quality data of this station.
- Increases and decreases in specific conductivity are generally related to fluctuations in stage. As stage decreases, specific conductivity usually increases as the concentration of dissolved solids increases. Inversely, when stage increases due to precipitation events, specific conductivity usually decreases due to the dilution of dissolved solids. This relationship is evident in the graph below.

Specific Conductivity & Stage at Churchill River below Metchin River

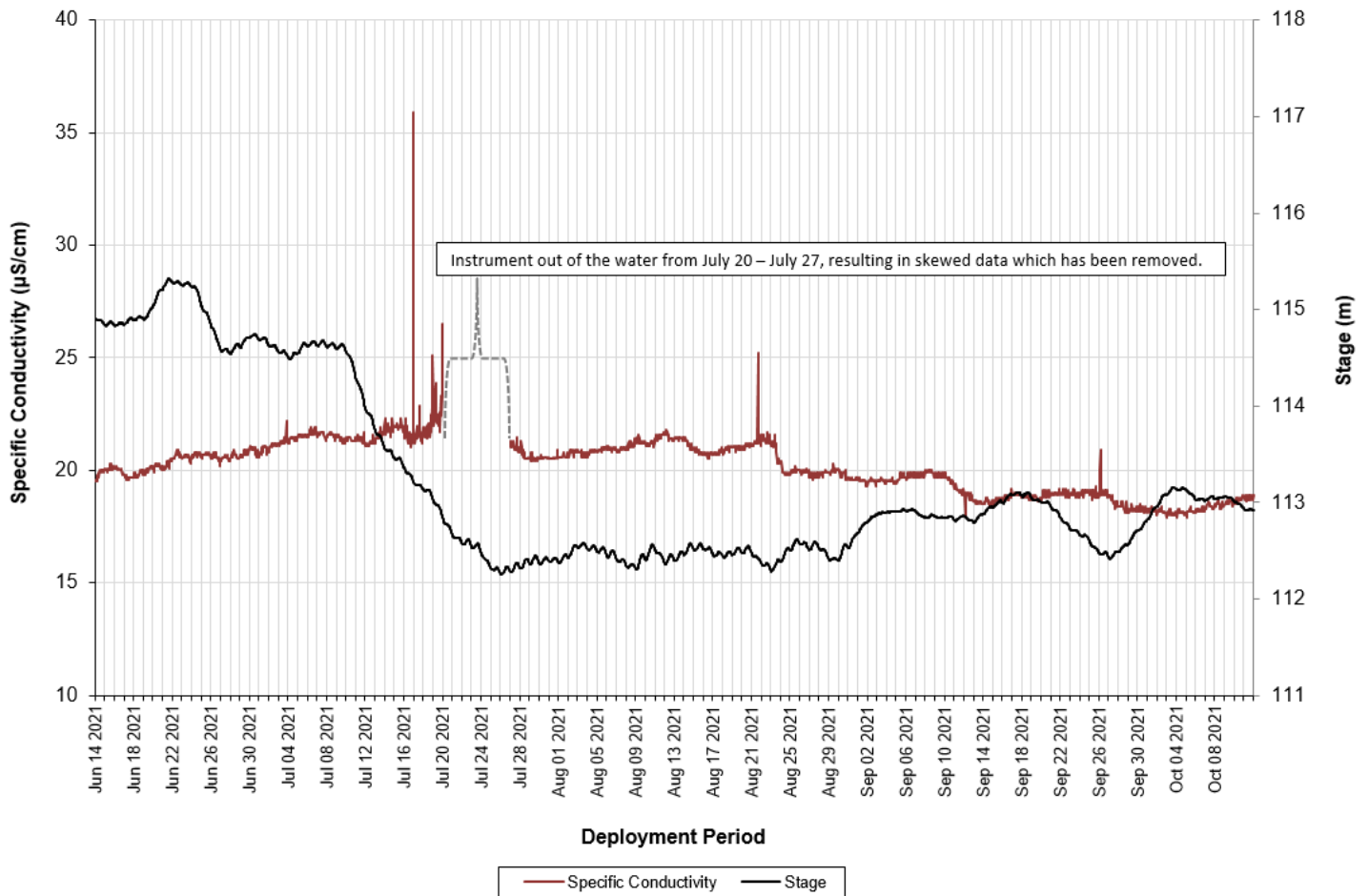


Figure 6: Specific Conductivity & Stage at Churchill River below Metchin River

| Specific Conductivity ($\mu\text{S}/\text{cm}$) | 2021 | 2020 | 2019 |
|---|------|------|------|
| Min | 17.9 | 17.8 | 11.8 |
| Max | 35.9 | 28.9 | 34.6 |
| Median | 20.3 | 20.6 | 18.7 |

Dissolved Oxygen

- Over the 2021 deployment season, dissolved oxygen ranged from 8.96 mg/L to 12.0 mg/L, with a median value of 9.86 mg/L (Figure 7), which was slightly higher than previous years. Percent saturation ranged from 91.4% to 103.9%, with a median value of 94.9% (Figure 7), which was also higher than previous years.
- Dissolved oxygen content fluctuates regularly on a daily basis. Percent saturation is generally consistent throughout the deployment season. As water temperatures decreased into the fall, dissolved oxygen content steadily increased.
- Instrument was out of the water from July 20 – July 27 due to dropping water levels, resulting in skewed data, which has been removed as it does not accurately reflect the water quality data of this station.
- Dissolved oxygen values were above the CCME’s Guidelines for the Protection of Early and Other Life Stages (6.5mg/L and 9.5mg/L respectively) for the majority of deployment. The period where dissolved oxygen values fell below the CCME’s Guideline for the Protection of Early Life Stages closely correlated with the period of highest water temperatures. This is to be expected as dissolved oxygen levels are generally lower in warmer water bodies.

Dissolved Oxygen & Water Temperature at Churchill River below Metchin River

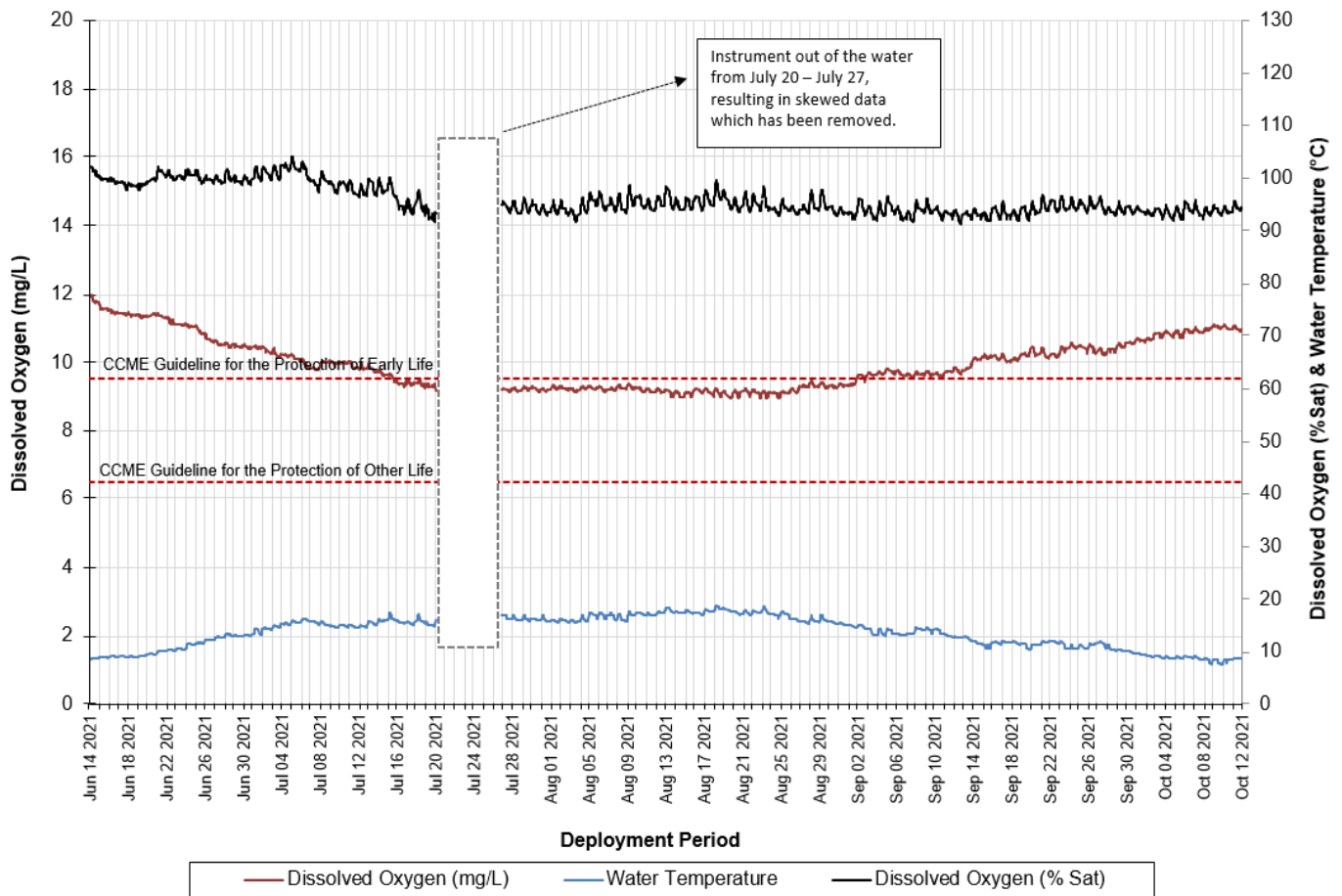


Figure 7: Dissolved Oxygen & Water Temperature at Churchill River below Metchin River

| Dissolved Oxygen (mg/L) | 2021 | 2020 | 2019 | Dissolved Oxygen (%Sat) | 2021 | 2020 | 2019 |
|-------------------------|-------|-------|-------|-------------------------|-------|-------|-------|
| Min | 8.96 | 8.63 | 9.15 | Min | 91.4 | 90.7 | 90.4 |
| Max | 12.00 | 15.59 | 23.11 | Max | 103.9 | 125.6 | 192.5 |
| Median | 9.86 | 11.82 | 10.25 | Median | 94.9 | 110.1 | 94.3 |

Turbidity & Precipitation

- Over the 2021 deployment season, turbidity ranged from 0 NTU to 46.3 NTU, with a median value of 13.1 NTU (Figure 8). A median value of 13.1 NTU indicates that there was significantly more background turbidity at this station in 2021 than in previous years. This may be related to the silty bottom at this location.
- Instrument was out of the water from July 20 – July 27 due to dropping water levels, resulting in skewed data, which has been removed as it does not accurately reflect the water quality data of this station.
- Turbidity is graphed below against stage and precipitation. Precipitation events often correlate closely with temporary increases in both stage and turbidity levels, which can be observed in the graph below. This station is located on a very wide and deep section of the Churchill River, so turbidity is less influenced by precipitation events when compared to other stations. Precipitation data was obtained from the Metchin River at TLH climate station.

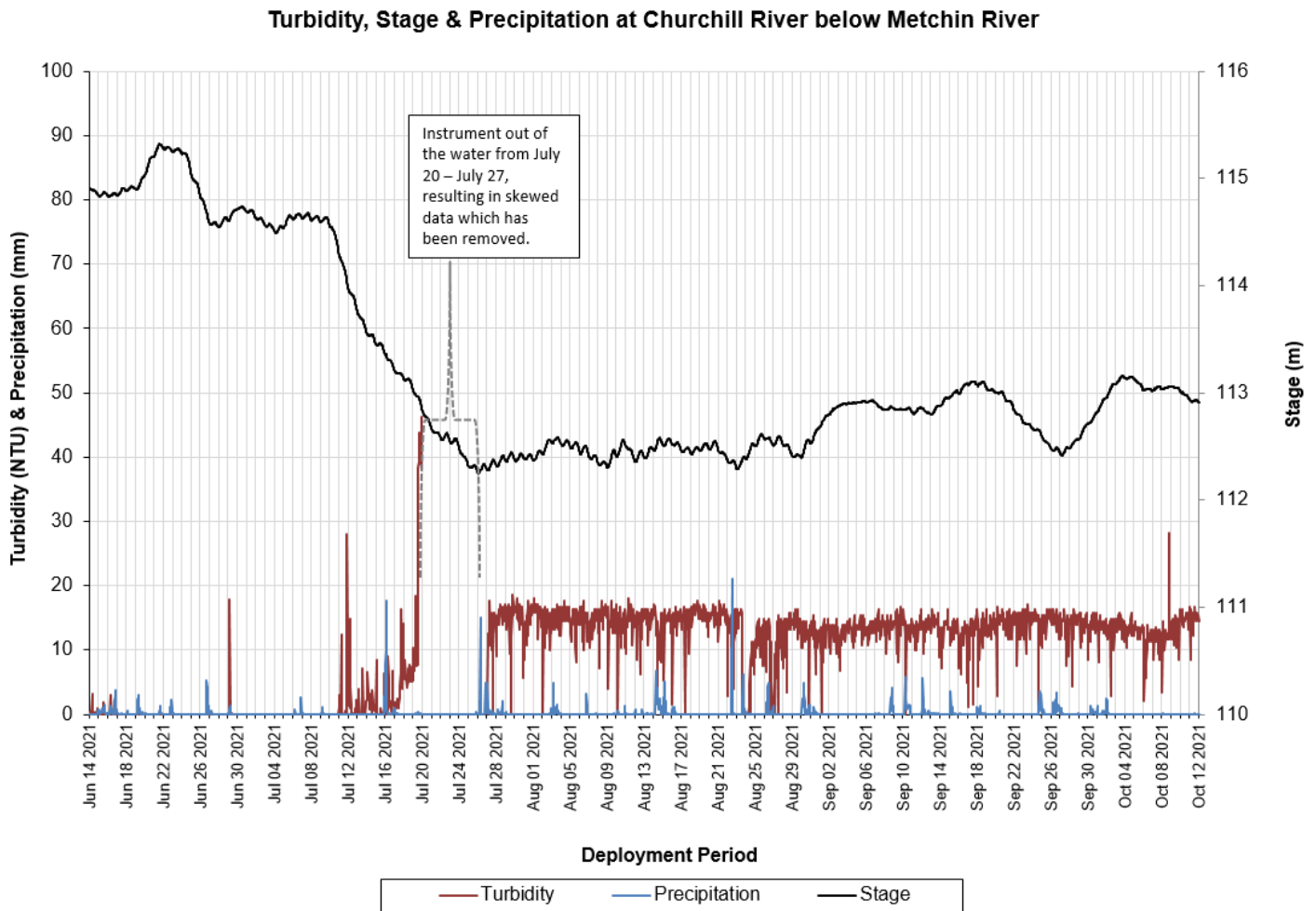


Figure 8: Turbidity, Stage & Precipitation at Churchill River below Metchin River

| Turbidity (NTU) | 2021 | 2020 | 2019 |
|-----------------|------|------|-------|
| Min | 0 | 0 | 0 |
| Max | 46.3 | 32.8 | 116.2 |
| Median | 13.1 | 1.1 | 0 |

Stage & Flow

- Over the 2021 deployment season, stage ranged from 112.251 m to 115.323 m, with a median value of 112.863 m (Figure 9). Stage peaked at the beginning of the deployment. At the start of July it began to decrease before stabilizing by the end of the month, where it would remain relatively consistent for the rest of the deployment period. Flow ranged from 900.818 m³/s to 1731.204 m³/s, with a median value of 1164.391 m³/s.
- Water Survey of Canada (ECCC) is responsible for QA/QC of water quantity data. Corrected data can be obtained upon request.

Stage & Flow at Churchill River below Metchin River

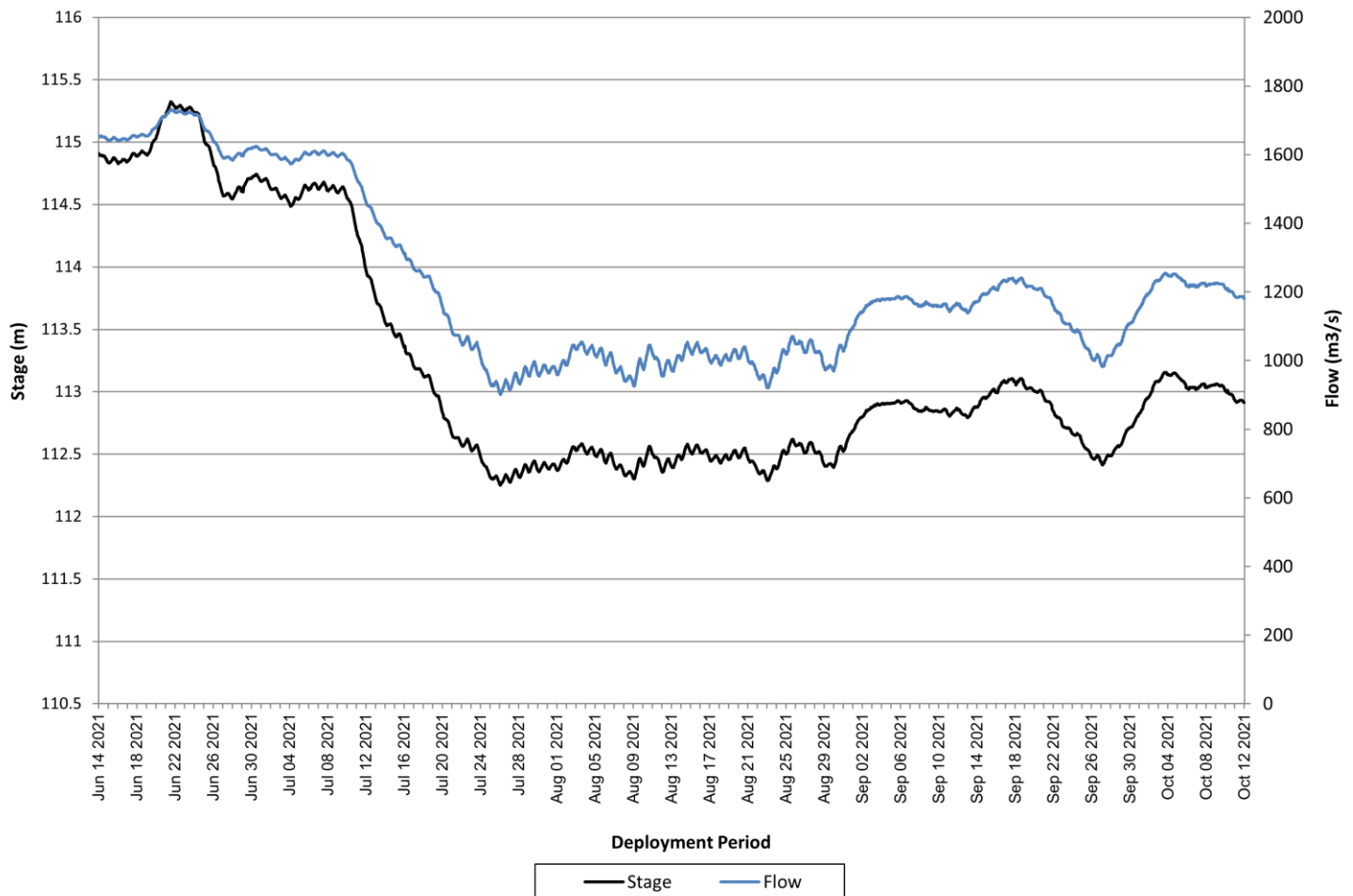


Figure 9: Stage & Flow at Churchill River below Metchin River

| Stage (m) | 2021 | 2020 | 2019 | Flow (m ³ /s) | 2021 | 2020 | 2019 |
|-----------|---------|---------|---------|--------------------------|----------|----------|----------|
| Min | 112.251 | 111.796 | 112.425 | Min | 900.818 | 629.119 | 1028.733 |
| Max | 115.323 | 113.870 | 115.161 | Max | 1731.204 | 1438.124 | 1791.508 |
| Median | 112.863 | 112.443 | 113.190 | Median | 1164.391 | 991.661 | 1296.666 |

Churchill River above Grizzle Rapids

Temperature

- Over the 2021 deployment season, water temperature ranged from 3.6°C to 19.2°C, with a median value of 13.2°C (Figure 10).
- Water temperatures peaked and plateaued in mid-August, after which they steadily declined through September and October.

Water Temperature & Stage at Churchill River above Grizzle Rapids

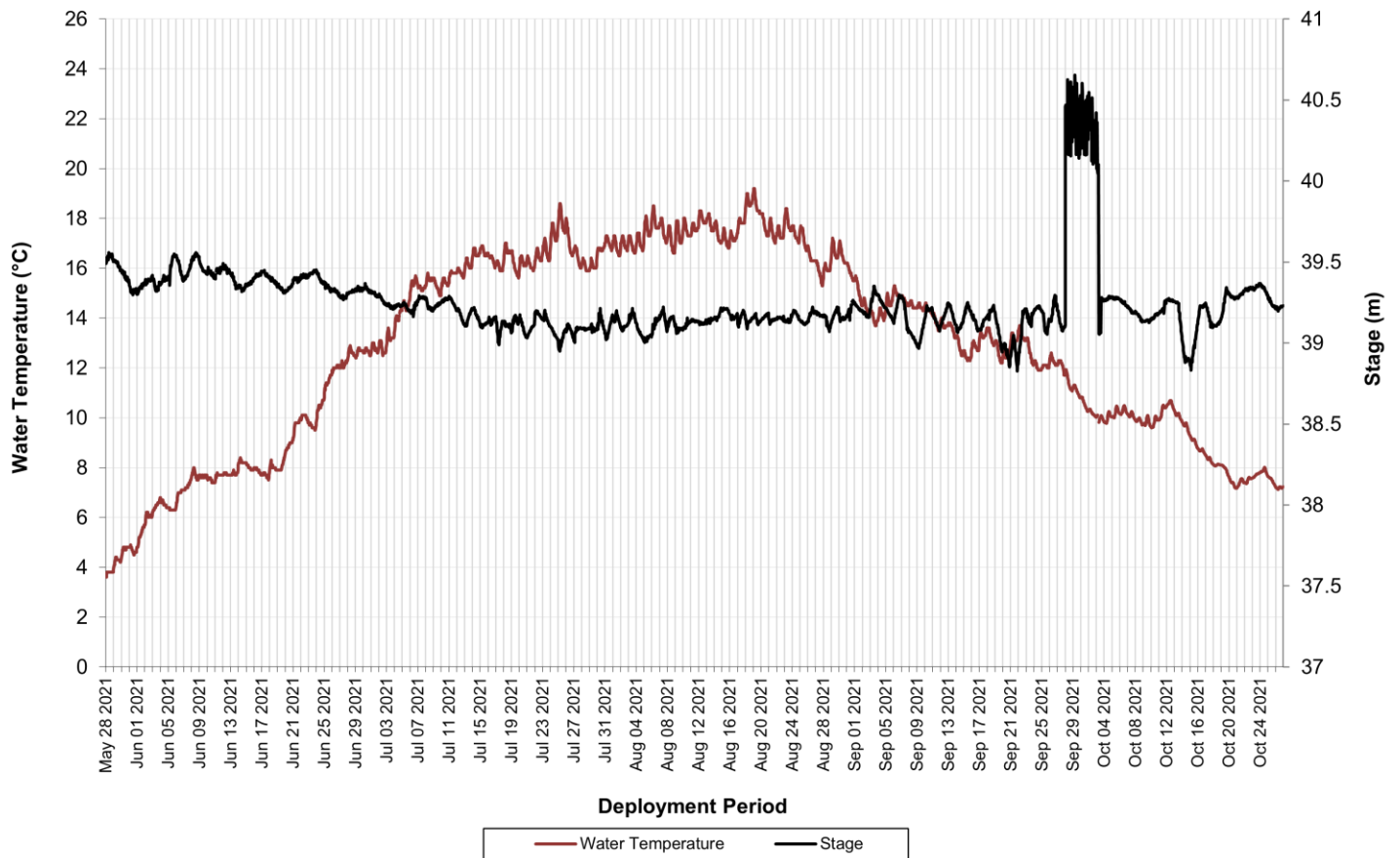


Figure 10: Water Temperature & Stage at Churchill River above Grizzle Rapids

| Temperature (°C) | 2021 | 2020 | 2019 |
|------------------|------|------|-------|
| Min | 3.6 | 2.6 | 5.4 |
| Max | 19.2 | 21.2 | 18.2 |
| Median | 13.2 | 14.2 | 13.45 |

- Water and air temperatures both showed typical seasonal trends (Figure 11), where temperatures steadily increased until mid-August, after which they gradually declined again through late summer and fall. Air temperature data was obtained from the Metchin River near TLH climate station.

Water Temperature & Air Temperature at Churchill River above Grizzle Rapids

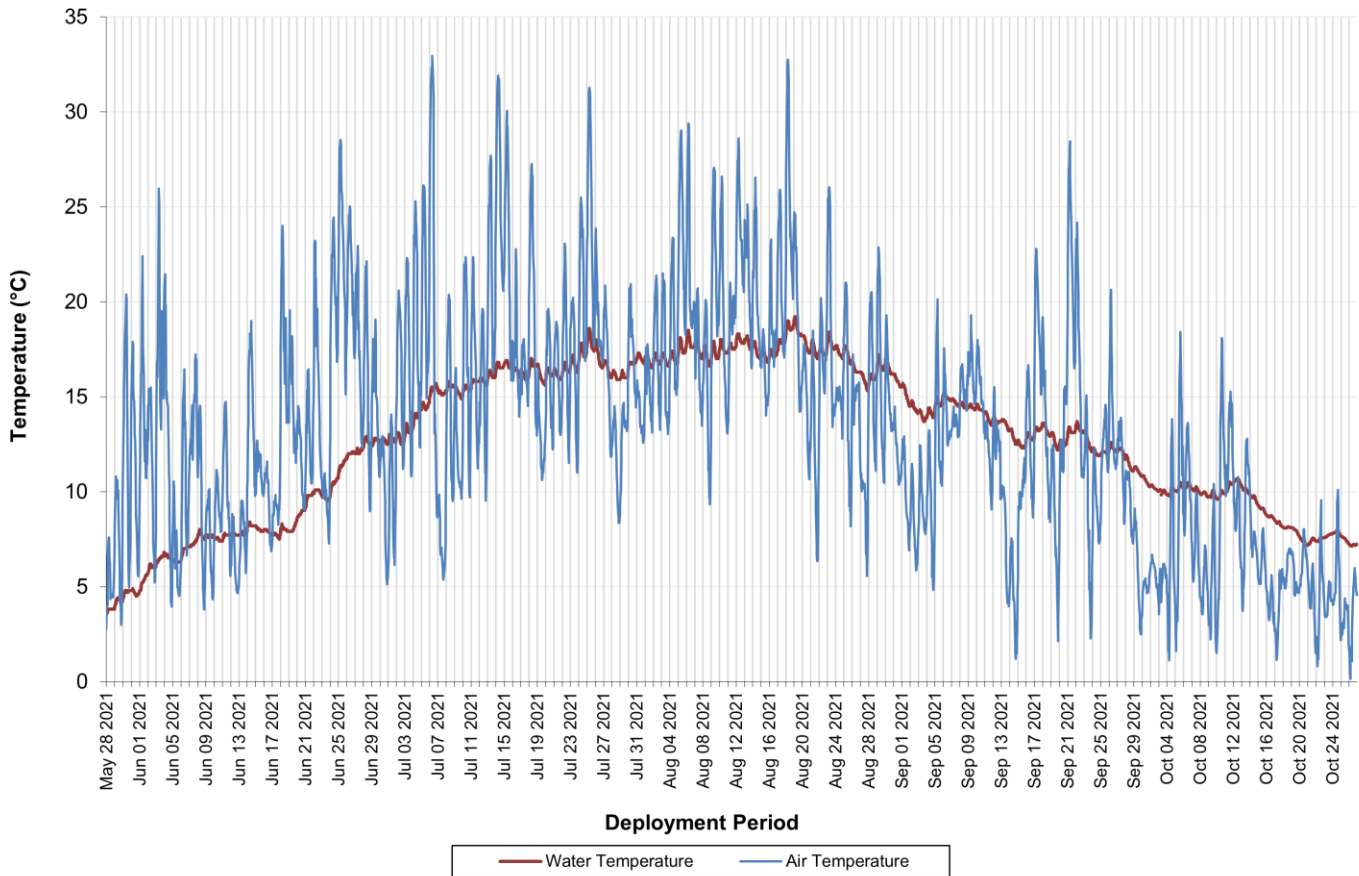


Figure 11: Water Temperature & Air Temperature at Churchill River above Grizzle Rapids

pH

- Over the 2021 deployment season, pH ranged from 6.50 to 7.26 pH units, with a median value of 7.02 pH units (Figure 12).
- pH values were relatively consistent across the deployment season, and remained within the CCME’s Guidelines for the Protection of Aquatic Life (>6.5 and <9.0 pH units) for the duration of the deployment season.

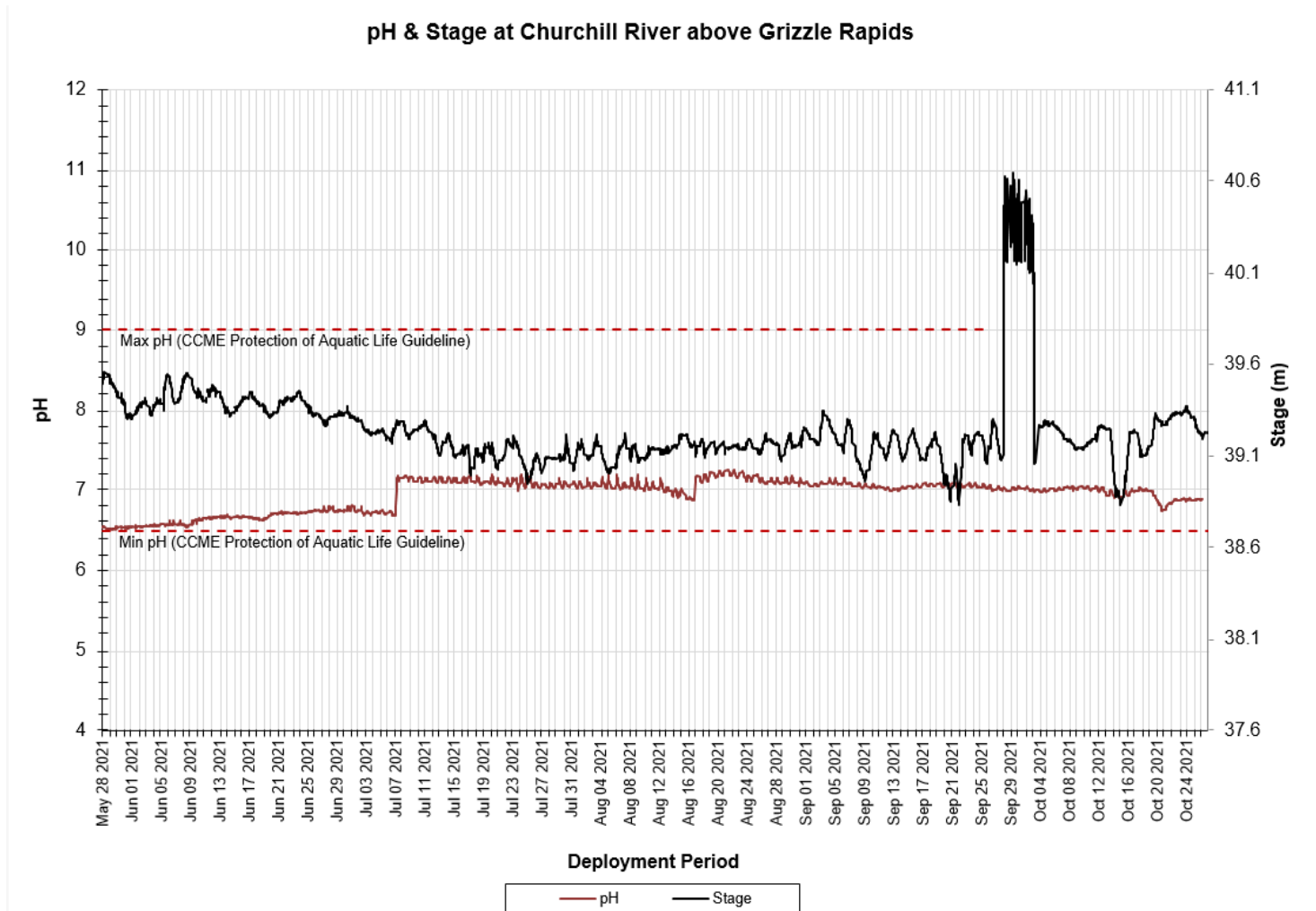


Figure 12: pH & Stage at Churchill River above Grizzle Rapids

| pH (units) | 2021 | 2020 | 2019 |
|---------------|------|------|------|
| Min | 6.50 | 6.56 | 6.54 |
| Max | 7.26 | 7.19 | 7.17 |
| Median | 7.02 | 6.89 | 6.81 |

Specific Conductivity

- Over the 2021 deployment season, specific conductivity ranged from 14.0 $\mu\text{S}/\text{cm}$ to 24.4 $\mu\text{S}/\text{cm}$, with a median value of 20.0 $\mu\text{S}/\text{cm}$ (Figure 13), which was similar to the median values from previous years.
- Specific conductivity was relatively consistent across the deployment season, with increases and decreases, correlating with fluctuations in stage. As stage decreases, specific conductivity usually increases as the concentration of dissolved solids increases. Inversely, when stage increases, specific conductivity decreases due to the dilution of dissolved solids in the water column. This relationship is somewhat evident in the graph below.

Specific Conductivity & Stage at Churchill River above Grizzle Rapids

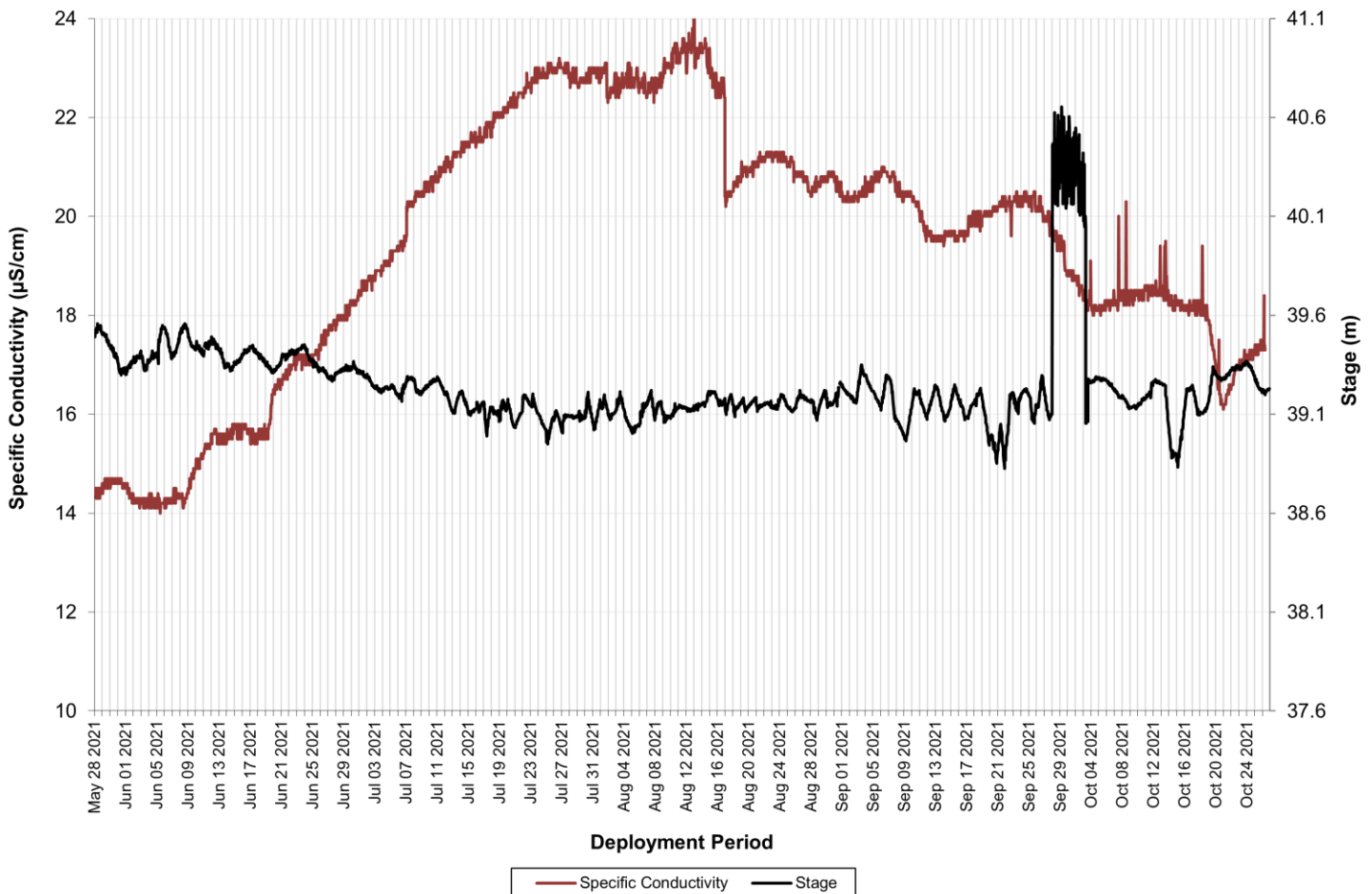


Figure 13: Specific Conductivity & Stage at Churchill River above Grizzle Rapids

| Specific Conductivity ($\mu\text{S}/\text{cm}$) | 2021 | 2020 | 2019 |
|---|------|------|------|
| Min | 14.0 | 13.5 | 12.1 |
| Max | 24.4 | 20.1 | 18.2 |
| Median | 20.0 | 17.8 | 15.5 |

Dissolved Oxygen

- Over the 2021 deployment season, dissolved oxygen ranged from 8.97 mg/L to 12.57 mg/L, with a median value of 10.22 mg/L. Percent saturation ranged from 92.4% to 101.3%, with a median value of 96.7% (Figure 14).
- Dissolved oxygen content displayed a typical seasonal trend, where levels were lowest during the summer months and then increased through the fall (September-October). Warmer temperatures decrease the amount of oxygen present in the water, and vice versa. Percent saturation remained fairly consistent across the deployment season.
- Dissolved oxygen values remained above the CCME’s Guideline for the Protection of Early and Other Life Stages (6.5mg/L and 9.5mg/L respectively), with the exception of a period from mid-July to late August when water temperatures were at their warmest.

Dissolved Oxygen & Water Temperature at Churchill River above Grizzle Rapids

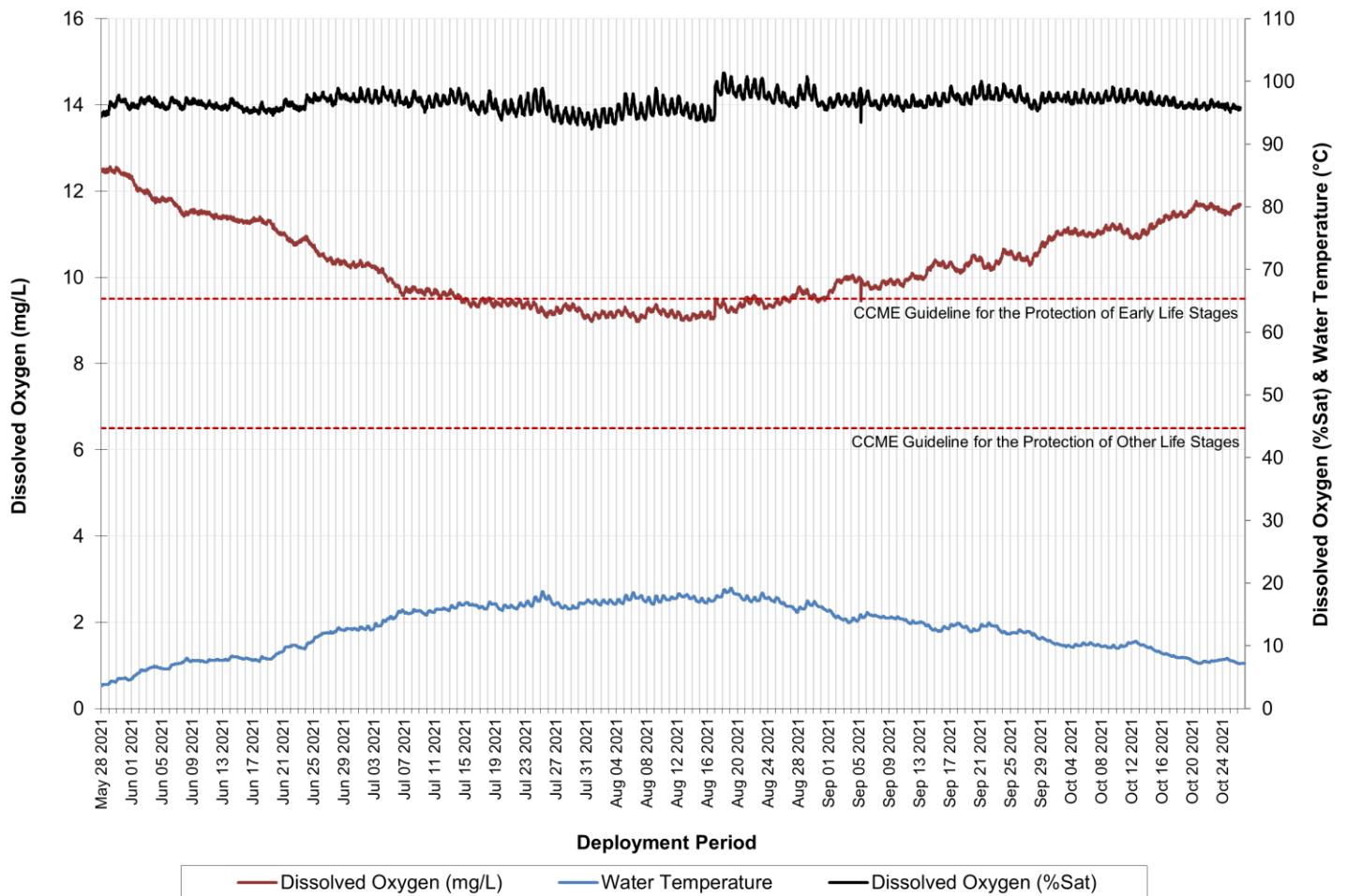


Figure 14: Dissolved Oxygen & Water Temperature at Churchill River above Grizzle Rapids

| Dissolved Oxygen (mg/L) | 2021 | 2020 | 2019 | | Dissolved Oxygen (% Sat) | 2021 | 2020 | 2019 |
|-------------------------|-------|-------|-------|--|--------------------------|-------|-------|-------|
| Min | 8.97 | 8.30 | 8.92 | | Min | 92.4 | 88.9 | 90.6 |
| Max | 12.57 | 12.55 | 11.62 | | Max | 101.3 | 101.9 | 100.2 |
| Median | 10.22 | 9.99 | 9.88 | | Median | 96.7 | 96.0 | 94.0 |

Turbidity & Precipitation

- Over the 2021 deployment season, turbidity ranged from 0 NTU to 9.7 NTU, with a median value of 0 NTU (Figure 15). A median value of 0 NTU indicates that there is very little natural background turbidity at this station.
- Turbidity spikes generally correlate with increases in stage, which often correlate with precipitation events. Turbidity levels returned to background levels following each observed increase.

Turbidity, Stage & Precipitation at Churchill River above Grizzle Rapids

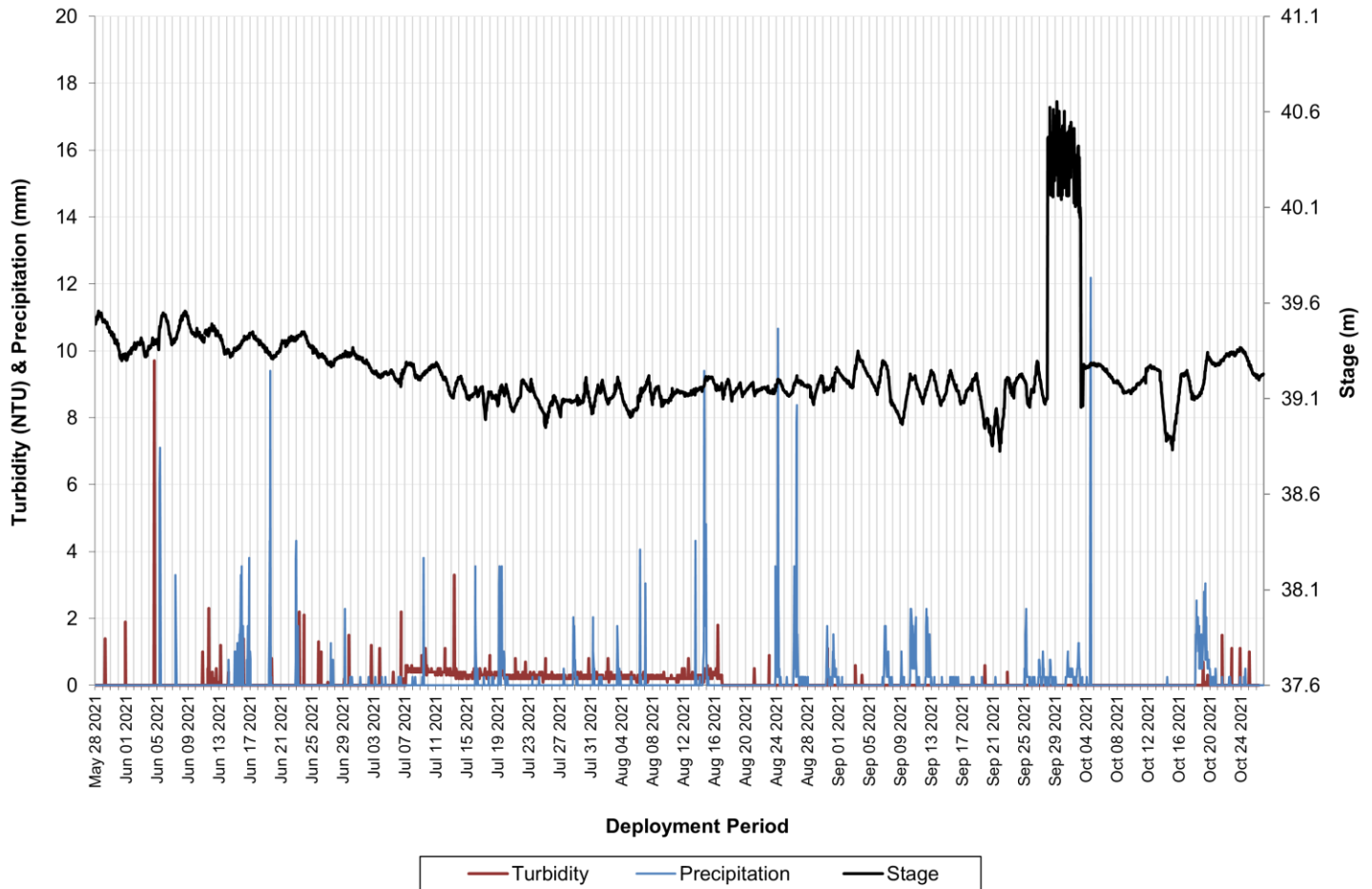


Figure 15: Turbidity, Stage & Precipitation at Churchill River above Grizzle Rapids

| Turbidity (NTU) | 2021 | 2020 | 2019 |
|-----------------|------|------|------|
| Min | 0 | 0 | 0 |
| Max | 9.7 | 2687 | 12.3 |
| Median | 0 | 0 | 0.1 |

Stage

- Over the 2021 deployment season, stage ranged from 38.826 m to 40.653 m, with a median value of 39.119m (Figure 16). The 2021 and 2020 median stage values have been significantly higher than previous years due to impoundment activities at the Muskrat Falls hydroelectric project.
- Water Survey of Canada (ECCC) is responsible for QA/QC of water quantity data (stage and flow). Corrected data can be obtained upon request.

Stage & Precipitation at Churchill River above Grizzle Rapids

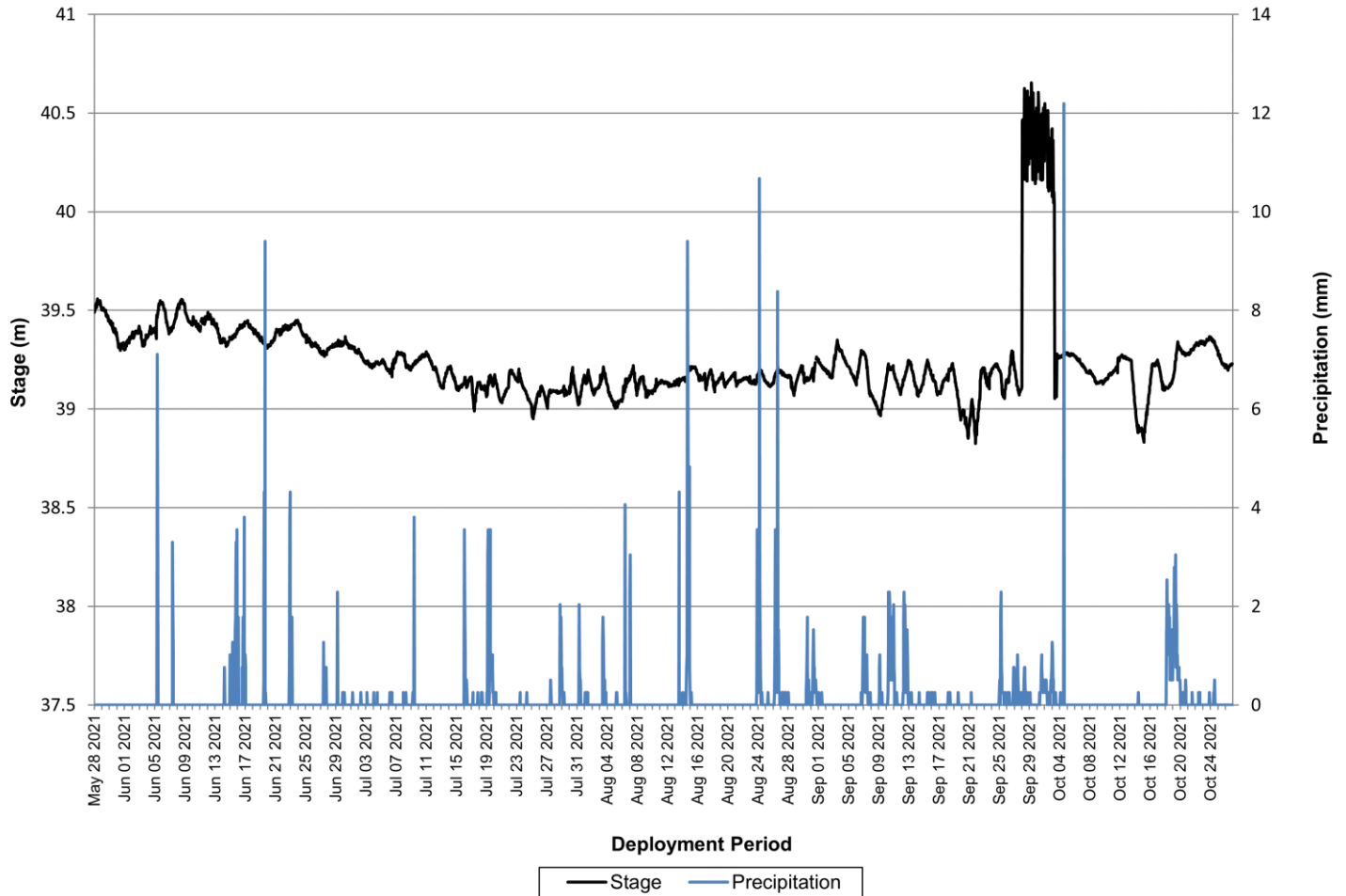


Figure 16: Stage & Flow at Churchill River above Grizzle Rapids

| Stage (m) | 2021 | 2020 | 2019 |
|-----------|--------|--------|--------|
| Min | 38.826 | 38.848 | 36.827 |
| Max | 40.653 | 39.341 | 39.242 |
| Median | 39.199 | 39.119 | 37.585 |

Churchill River below Muskrat Falls

Temperature

- Over the 2021 deployment season, water temperature ranged from 3.6°C to 19.9°C, with a median value of 12.3°C (Figure 17), which was very similar to the median value from 2020 and 2019.
- Instrument was out of the water from July 21 – August 14 due to dropping water levels, resulting in skewed data, which has been removed as it does not accurately reflect the water quality data of this station.
- Water temperatures followed typical season trends; temperatures increased steadily from initial deployment through to mid-August, after which they steadily declined again through September and October.

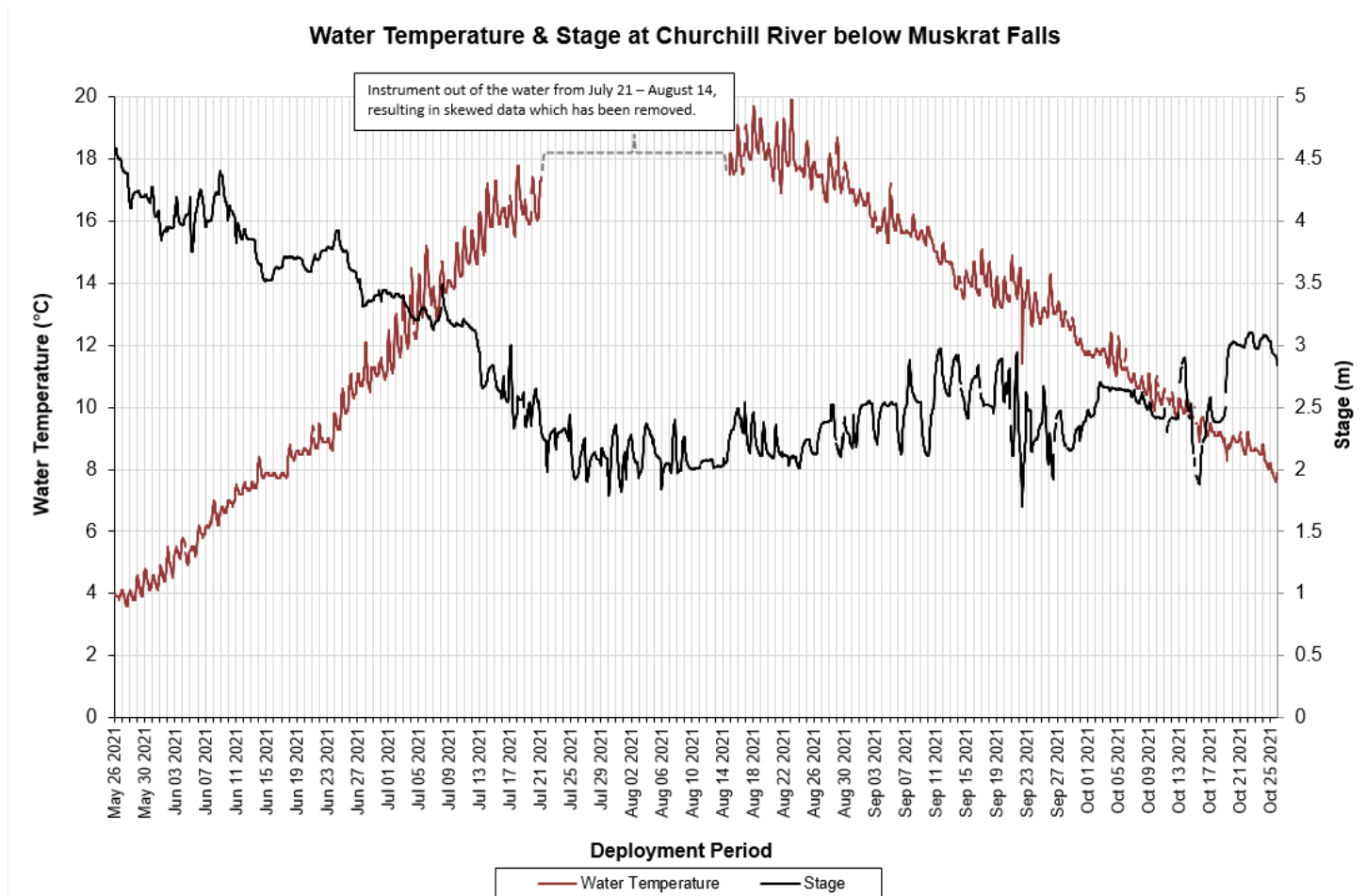


Figure 17: Water Temperature & Stage at Churchill River below Muskrat Falls

| Temperature (°C) | 2021 | 2020 | 2019 |
|------------------|------|------|------|
| Min | 3.6 | 2.7 | 1.6 |
| Max | 19.9 | 20.4 | 18.2 |
| Median | 12.3 | 13.5 | 13.2 |

- Water temperature values correlated closely with air temperatures; both increased through the summer months and then gradually decreased again into the fall season. Air temperature data was obtained from the Muskrat Falls MET Station.
- Instrument was out of the water from July 21 – August 14 due to dropping water levels, resulting in skewed data, which has been removed as it does not accurately reflect the water quality data of this station.

Water Temperature & Air Temperature at Churchill River below Muskrat Falls

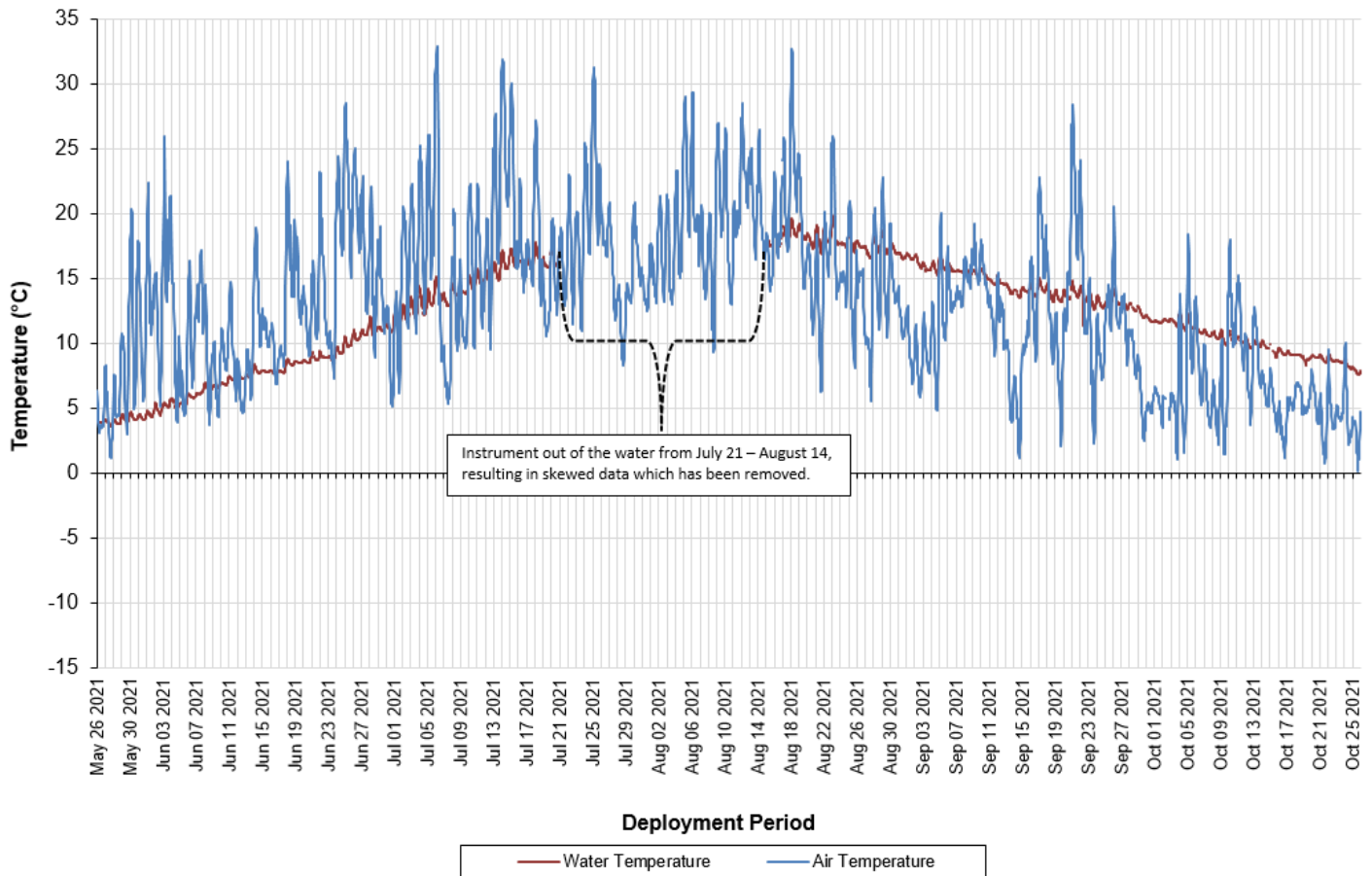


Figure 18: Water Temperature & Air Temperature at Churchill River below Muskrat Falls

pH

- Over the 2021 deployment season, pH ranged from 5.63 to 7.19 pH units, with a median value of 6.93 pH units (Figure 19), which was slightly higher than the 2019 and 2020 median values.
- pH values were within the CCME’s Guidelines for the Protection of Aquatic Life (>6.5 and <9.0 pH units) for the majority of the deployment season, with the exception of a short period during late spring and early summer.
- Instrument was out of the water from July 21 – August 14 due to dropping water levels, resulting in skewed data, which has been removed as it does not accurately reflect the water quality data of this station.

pH & Stage at Churchill River below Muskrat Falls

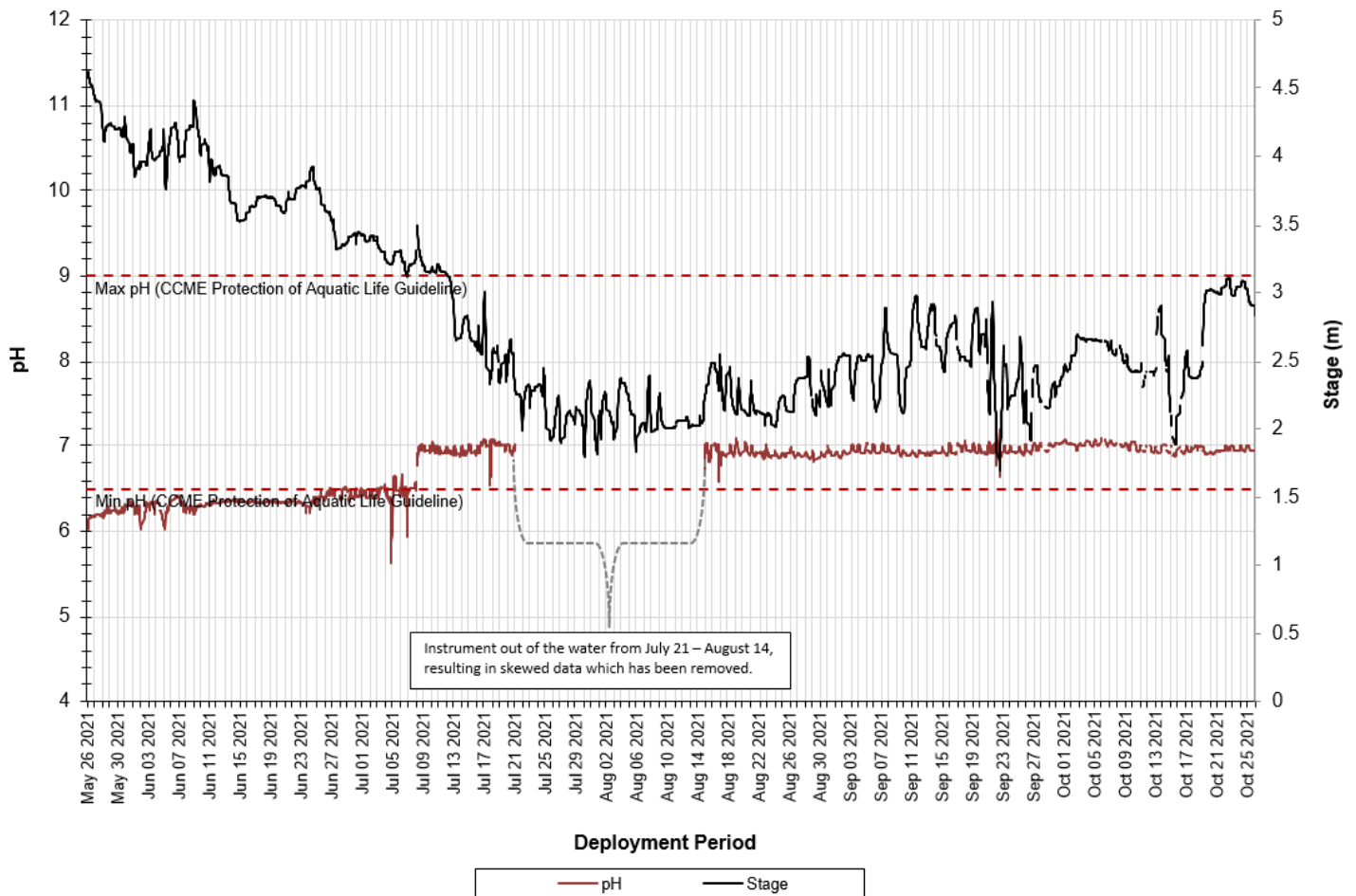


Figure 19: pH & Stage at Churchill River below Muskrat Falls

| pH (units) | 2021 | 2020 | 2019 |
|------------|------|------|------|
| Min | 5.63 | 6.17 | 5.91 |
| Max | 7.19 | 7.23 | 7.19 |
| Median | 6.93 | 6.75 | 6.32 |

Specific Conductivity

- Over the 2021 deployment season, specific conductivity ranged from 3.8 $\mu\text{S}/\text{cm}$ to 21.5 $\mu\text{S}/\text{cm}$, with a median value of 18.3 $\mu\text{S}/\text{cm}$ (Figure 20), which was slightly higher than the 2019 and 2020 median values.
- Specific conductivity increased slowly throughout the spring and summer months, and then decreased slowly through the fall months. Generally, specific conductivity does not vary greatly in the Lower Churchill River, which is evidenced in the graph below. Increases and decreases in specific conductivity are generally related to fluctuations in stage. As stage decreases, specific conductivity usually increases as the concentration of dissolved solids increases. Inversely, when stage increases, specific conductivity decreases due to dilution of dissolved solids in the water column.
- Instrument was out of the water from July 21 – August 14 due to dropping water levels, resulting in skewed data, which has been removed.

Specific Conductivity & Stage at Churchill River below Muskrat Falls

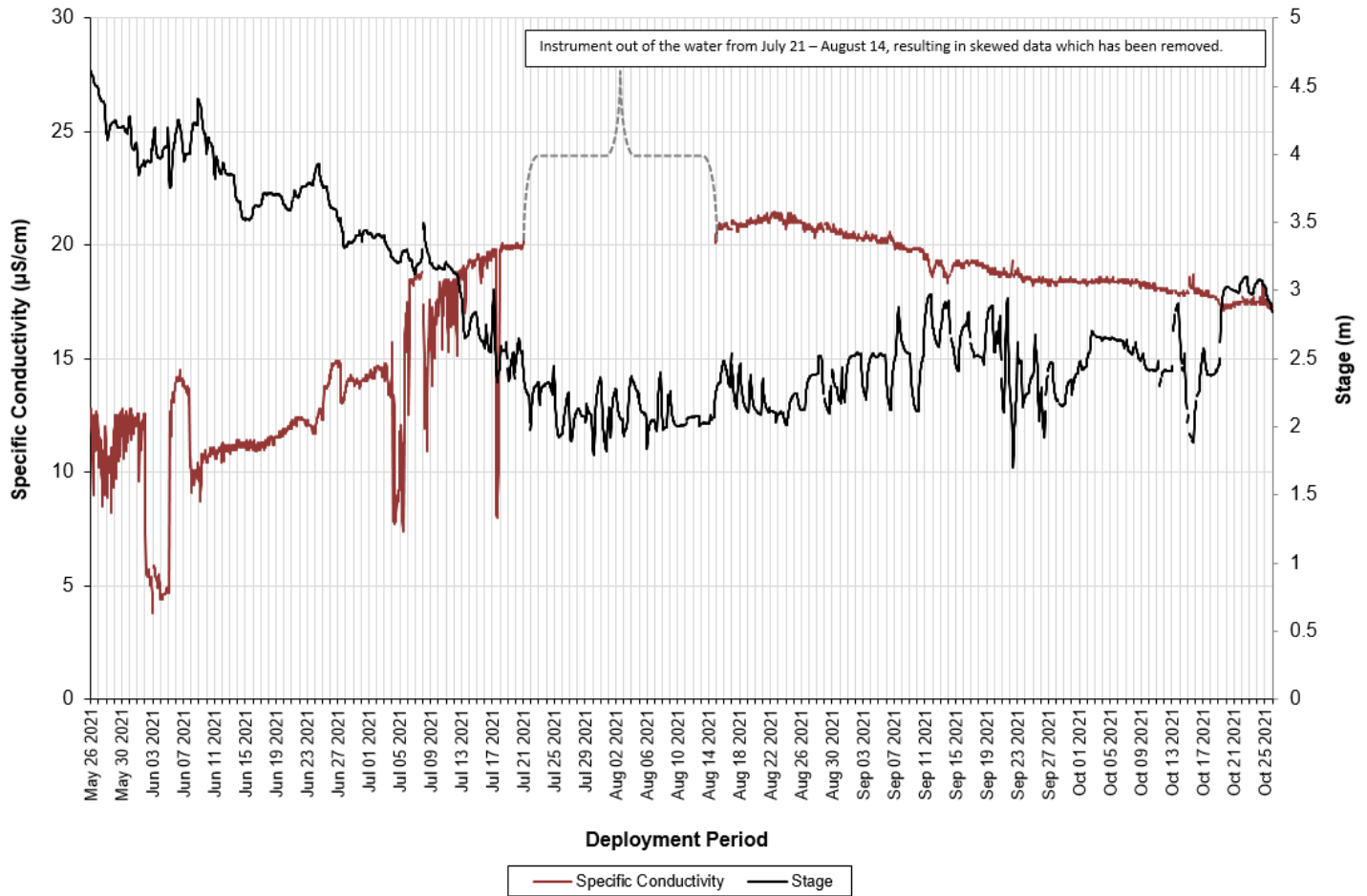


Figure 20: Specific Conductivity & Stage at Churchill River below Muskrat Falls

| Specific Conductivity ($\mu\text{S}/\text{cm}$) | 2021 | 2020 | 2019 |
|---|------|------|------|
| Min | 3.8 | 11.0 | 0 |
| Max | 21.5 | 19.7 | 18.9 |
| Median | 18.3 | 17.7 | 16.4 |

Dissolved Oxygen

- Over the 2021 deployment season, dissolved oxygen ranged from 8.55 mg/L to 16.09 mg/L, with a median value of 11.28 mg/L, which was similar to the 2019 and 2020 medians. Percent saturation ranged from 90.1% to 125.3%, with a median value of 103.5%, which was lower than previous years (Figure 21).
- Dissolved oxygen displayed a typical seasonal trend throughout 2021, with the lowest values observed throughout late July and early August. Warmer temperatures decrease the amount of oxygen present in water, and vice versa. Percent saturation remained fairly consistent across the deployment season. Dissolved oxygen levels remained above the CCME’s Guidelines for the Protection of Early and Other Life Stages for the majority of the 2021 deployment season (Figure 21).
- Instrument was out of the water from July 21 – August 14 due to dropping water levels, resulting in skewed data, which has been removed as it does not accurately reflect the water quality data of this station.

Dissolved Oxygen & Water Temperature at Churchill River below Muskrat Falls

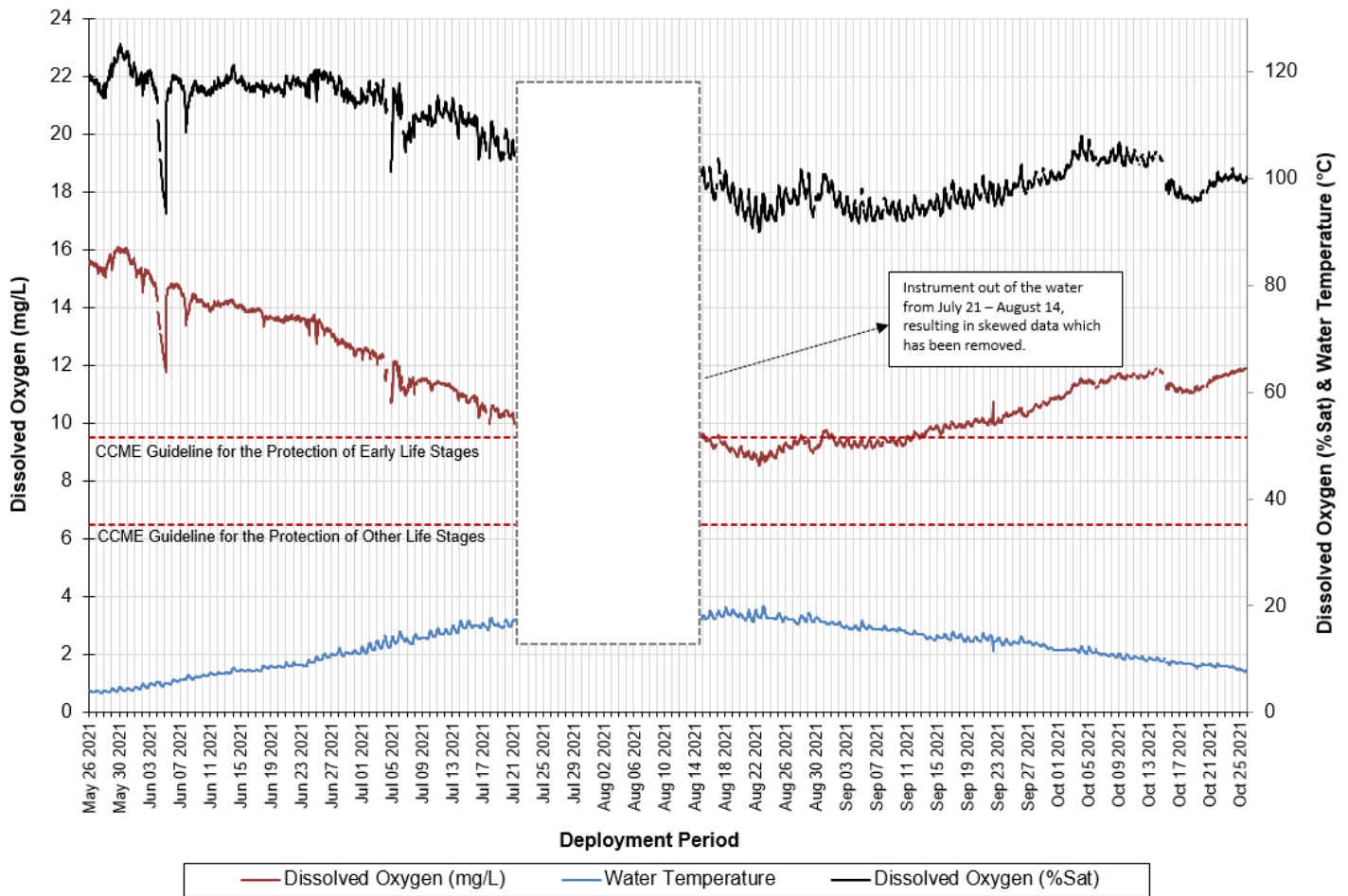


Figure 21: Dissolved Oxygen & Water Temperature at Churchill River below Muskrat Falls

| Dissolved Oxygen (mg/L) | 2021 | 2020 | 2019 | | Dissolved Oxygen (% Sat) | 2021 | 2020 | 2019 |
|-------------------------|-------|-------|-------|--|--------------------------|-------|-------|-------|
| Min | 8.55 | 9.32 | 10.06 | | Min | 90.1 | 95.1 | 99.1 |
| Max | 16.09 | 14.38 | 16.82 | | Max | 125.3 | 117.8 | 126.5 |
| Median | 11.28 | 11.10 | 12.13 | | Median | 103.5 | 108.1 | 114.6 |

Turbidity & Precipitation

- Over the 2021 deployment season, turbidity ranged from 0 NTU to 338 NTU, with a median value of 1.2 NTU. (Figure 22). A median value of 1.2 NTU indicates that there is a small amount of natural background turbidity at this station, and is similar to previous years.
- Turbidity events throughout the 2021 deployment season correlated somewhat with increases in stage, which were further linked to precipitation events.
- Instrument was out of the water from July 21 – August 14 due to dropping water levels, resulting in skewed data, which has been removed as it does not accurately reflect the water quality data of this station.

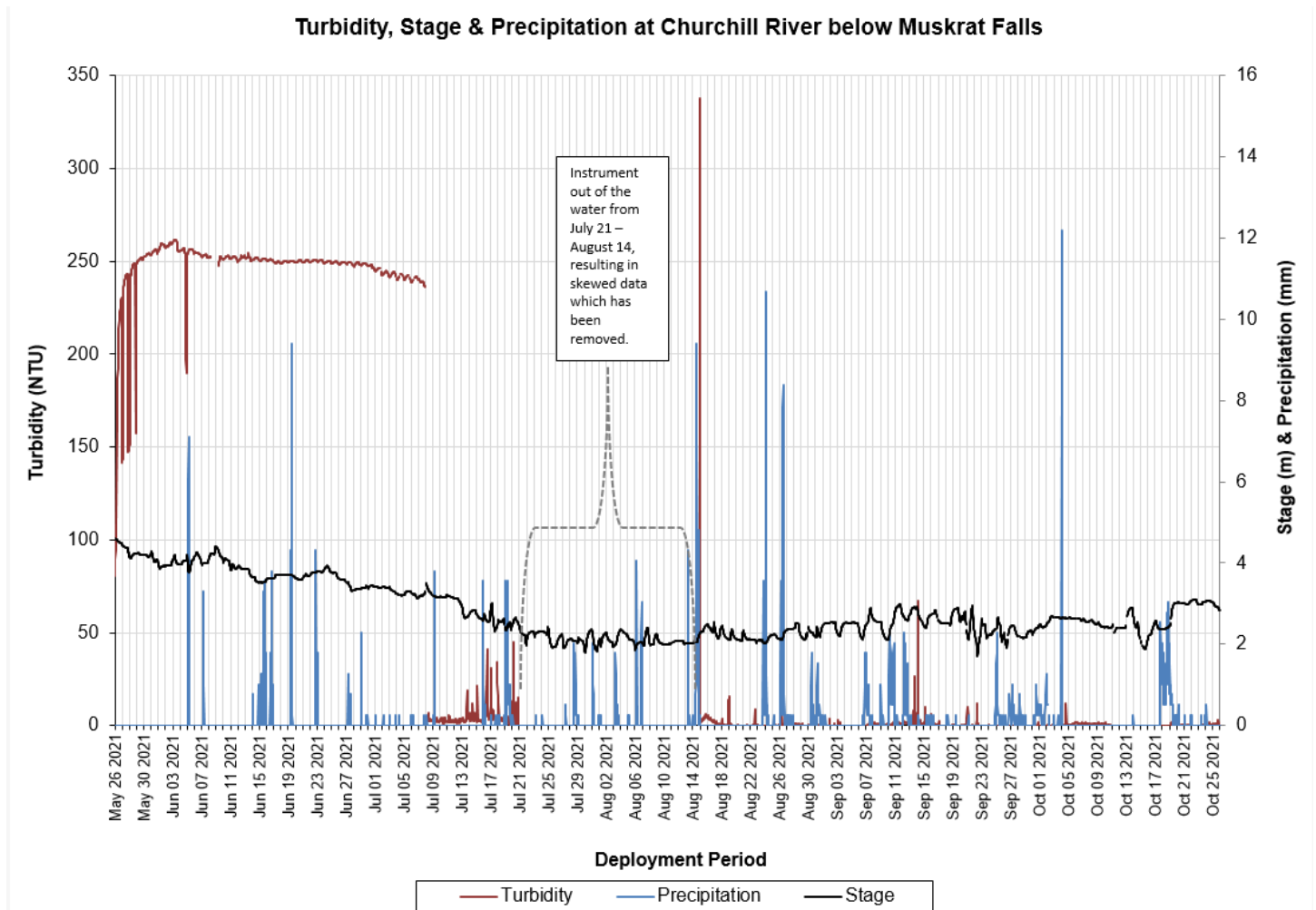


Figure 22: Turbidity, Stage & Precipitation at Churchill River below Muskrat Falls

| Turbidity (NTU) | 2021 | 2020 | 2019 |
|-----------------|------|------|------|
| Min | 0 | 0.1 | 0 |
| Max | 338 | 2036 | 2756 |
| Median | 1.2 | 3.5 | 8.5 |

Stage

- Over the 2021 deployment season, stage ranged from 1.70 m to 4.61 m, with a median value of 2.56 m (Figure 23), which was a return to usual readings from past seasons as a slightly lower than usual median value last year.
- Stage increases generally correlated well with precipitation events throughout the 2021 season (Figure 23).
- Water Survey of Canada (ECCC) is responsible for QA/QC of water quantity data. Corrected data can be obtained upon request.

Stage & Precipitation at Churchill River below Muskrat Falls

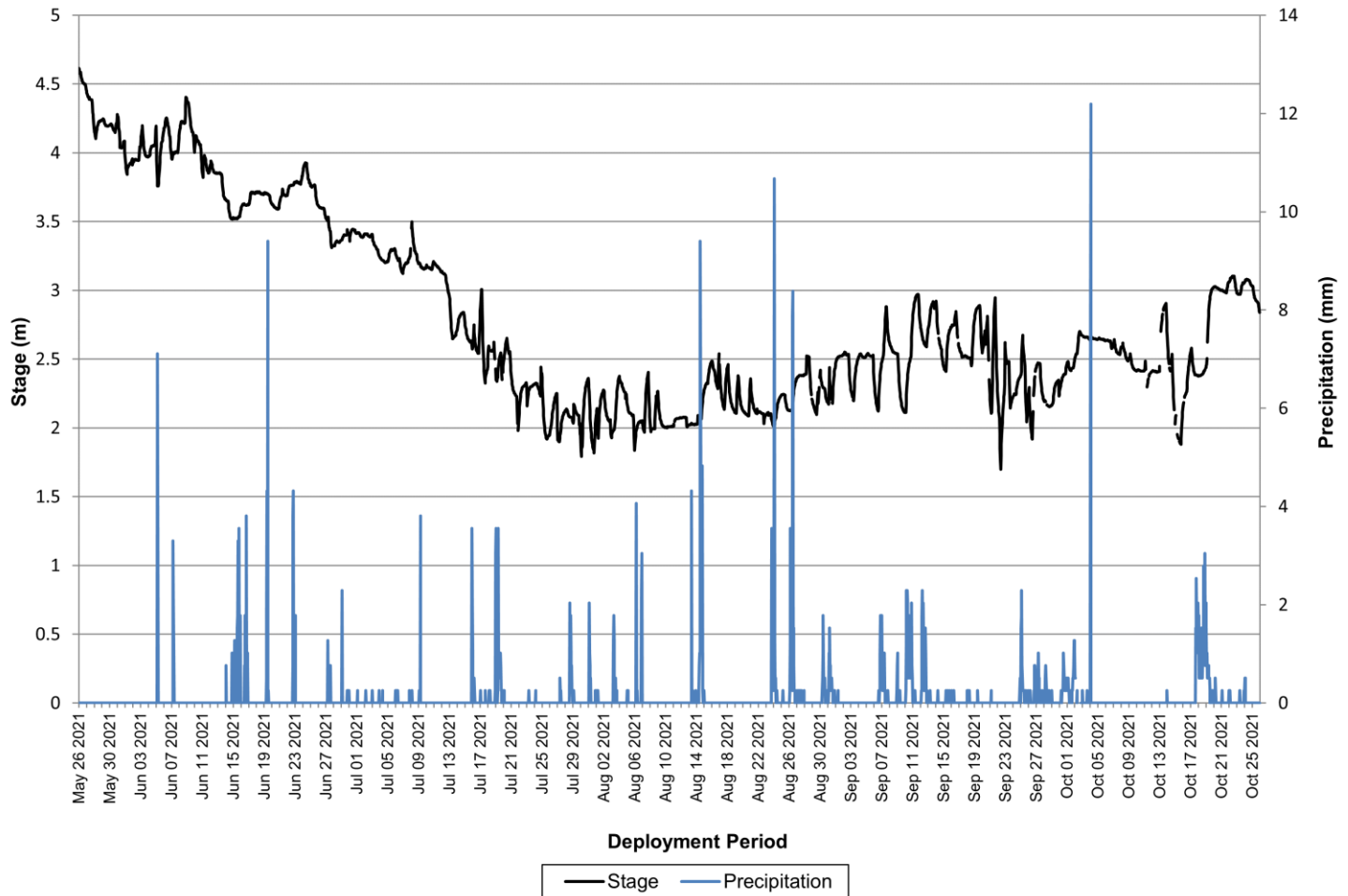


Figure 23: Stage & Precipitation at Churchill River below Muskrat Falls

| Stage (m) | 2021 | 2020 | 2019 |
|-----------|-------|-------|-------|
| Min | 1.7 | -0.84 | -2.26 |
| Max | 4.613 | 3.27 | 4.918 |
| Median | 2.56 | 2.21 | 2.486 |

Churchill River at English Point

Temperature

- Over the 2021 deployment season, water temperature ranged from 4.2°C to 22.4°C, with a median value of 13.6°C (Figure 24).
- Daily fluctuations at this station are far greater compared to the other stations in the Churchill River network due to tidal influences from the Atlantic Ocean and Lake Melville.

Water Temperature & Stage at Churchill River at English Point

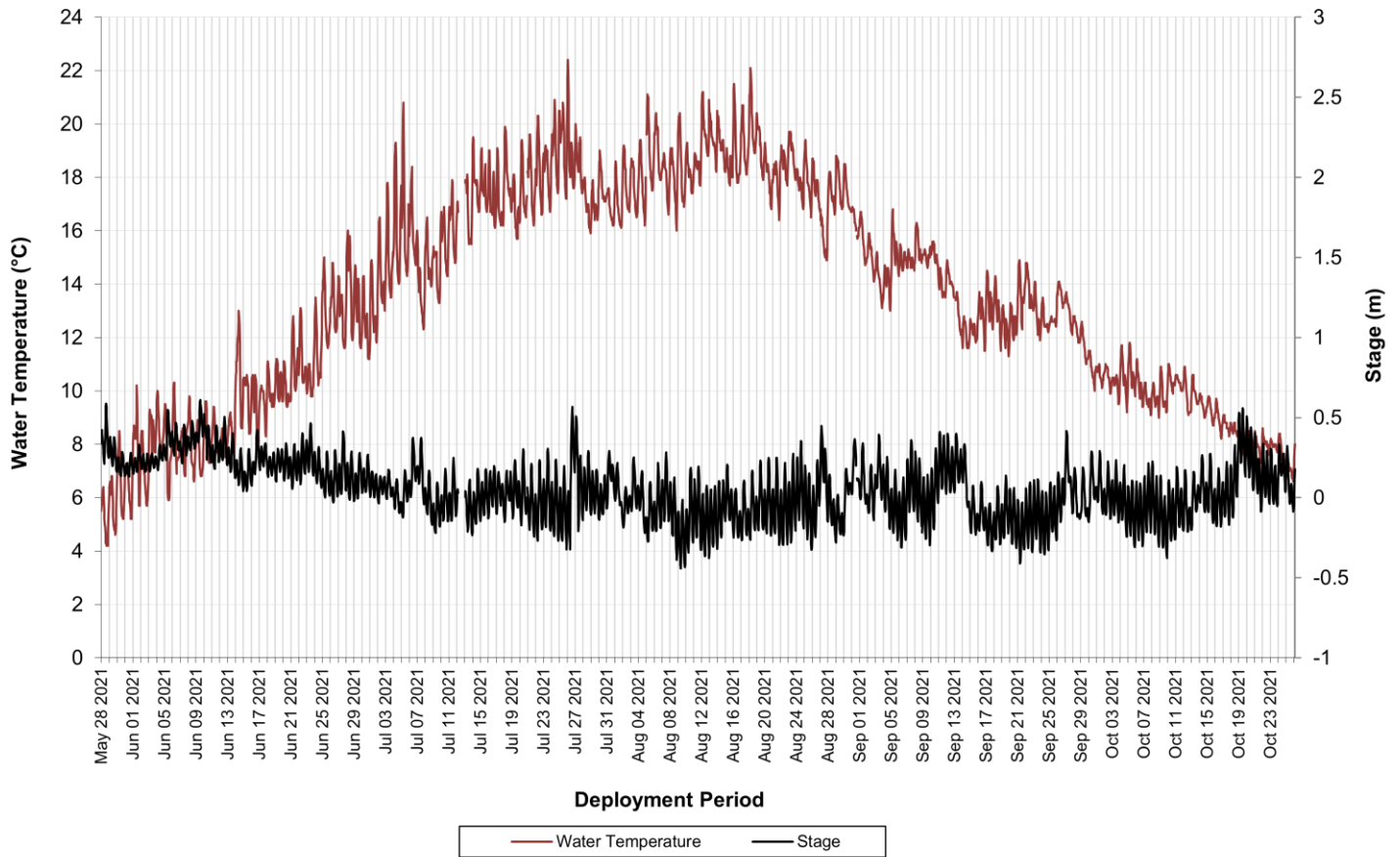


Figure 24: Water Temperature & Stage at Churchill River at English Point

| Temperature (°C) | 2021 | 2020 | 2019 |
|------------------|------|------|------|
| Min | 4.2 | 2.4 | 2.5 |
| Max | 22.4 | 23.6 | 19.3 |
| Median | 13.6 | 14.6 | 11.9 |

- Temperatures followed a typical seasonal trend (Figure 25), where both water and air temperatures increased throughout the spring and early summer with water temperatures peaking in mid-August. Water and air temperatures decreased steadily from late August onwards. Air temperature data was obtained from the Churchill River at End of Mud Lake Road Climate Station.

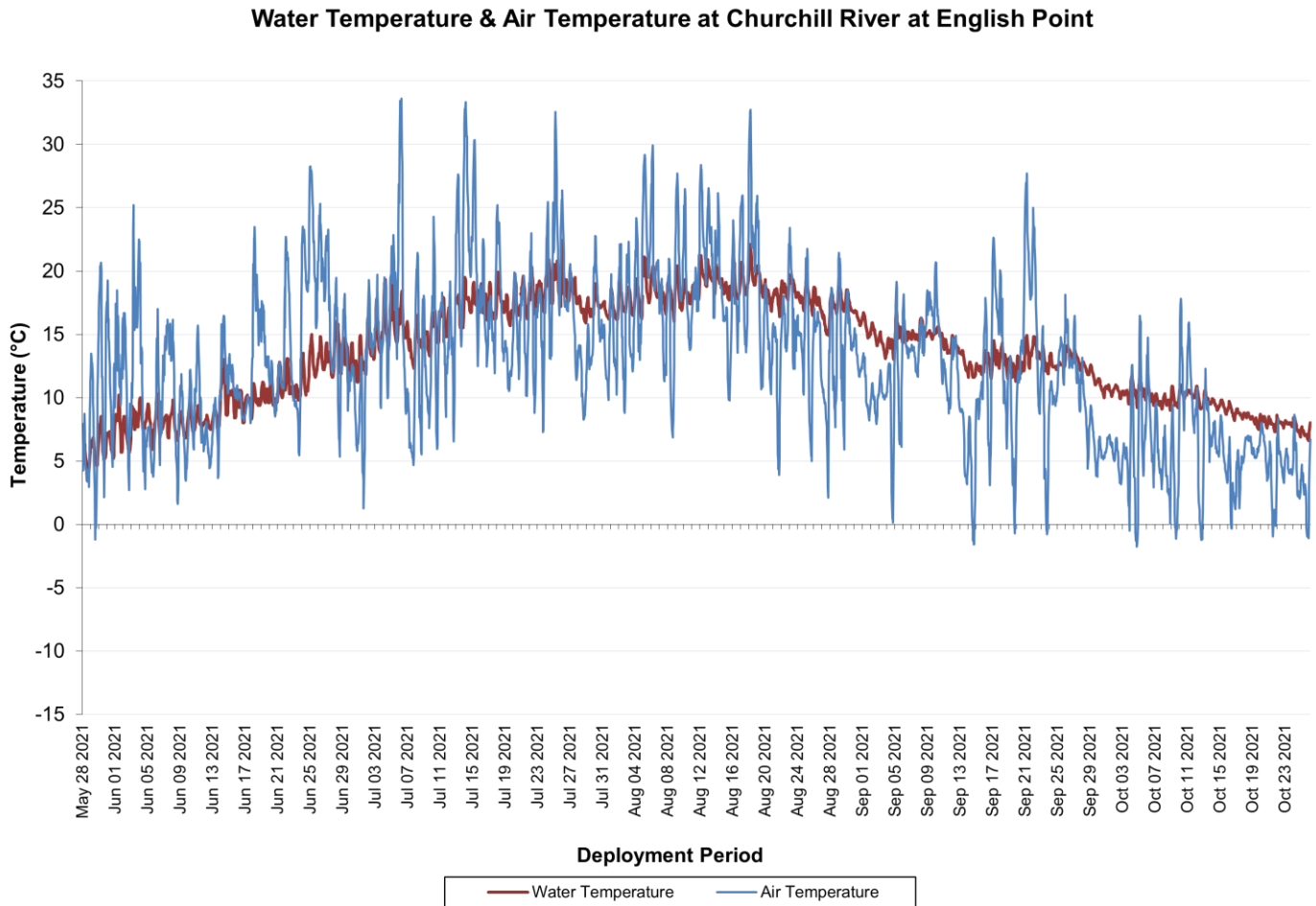


Figure 25: Water Temperature & Air Temperature at Churchill River at English Point

pH

- Over the 2021 deployment season, pH ranged from 5.85 to 7.38 pH units, with a median value of 6.66 pH units (Figure 26).
- pH values were below or fluctuated below the CCME’s Guidelines for the Protection of Aquatic Life (>6.5 and <9.0 pH units) at multiple points during the deployment period, however, for the most part, values were above the minimum threshold (Figure 26).

pH & Stage at Churchill River at English Point

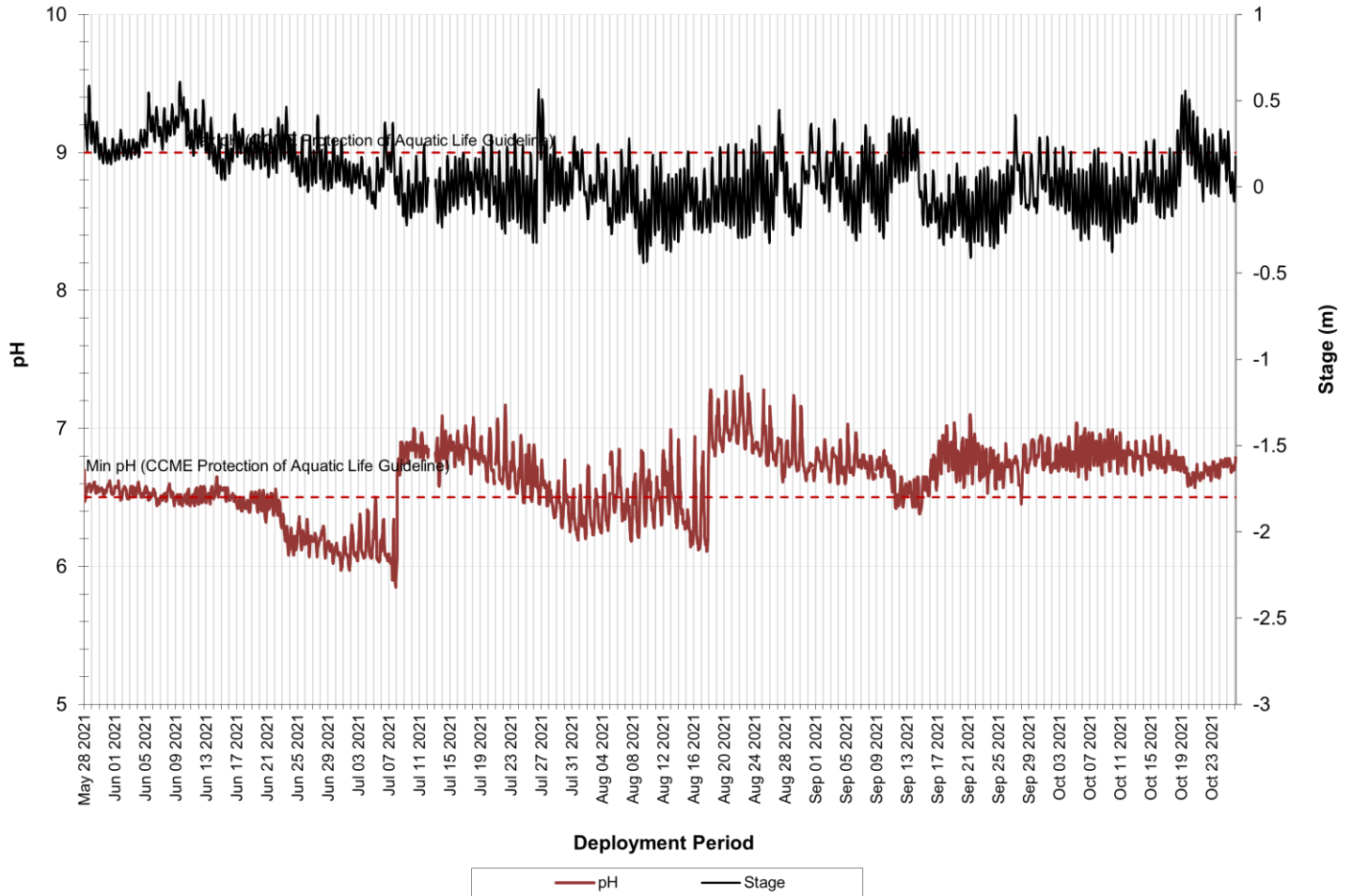


Figure 26: pH & Stage at Churchill River at English Point

| pH (units) | 2021 | 2020 | 2019 |
|------------|------|------|------|
| Min | 5.85 | 6.21 | 5.70 |
| Max | 7.38 | 7.34 | 7.02 |
| Median | 6.66 | 6.82 | 6.53 |

Specific Conductivity

- Over the 2021 deployment season, specific conductivity ranged from 11.4 $\mu\text{S}/\text{cm}$ to 60.8 $\mu\text{S}/\text{cm}$, with a median value of 28.2 $\mu\text{S}/\text{cm}$, which was very similar to the previous two seasons (Figure 27).
- Specific conductivity is highly variable at this station, fluctuating significantly every day due to tidal influences from the Atlantic Ocean. As the tide comes in, specific conductivity increases as dissolved solids and salinity increase. Similarly, when the tide goes out, specific conductivity decreases as dissolved solids and salinity decrease. This increase and decrease in specific conductivity and stage occurs twice daily.

Specific Conductivity & Stage at Churchill River at English Point

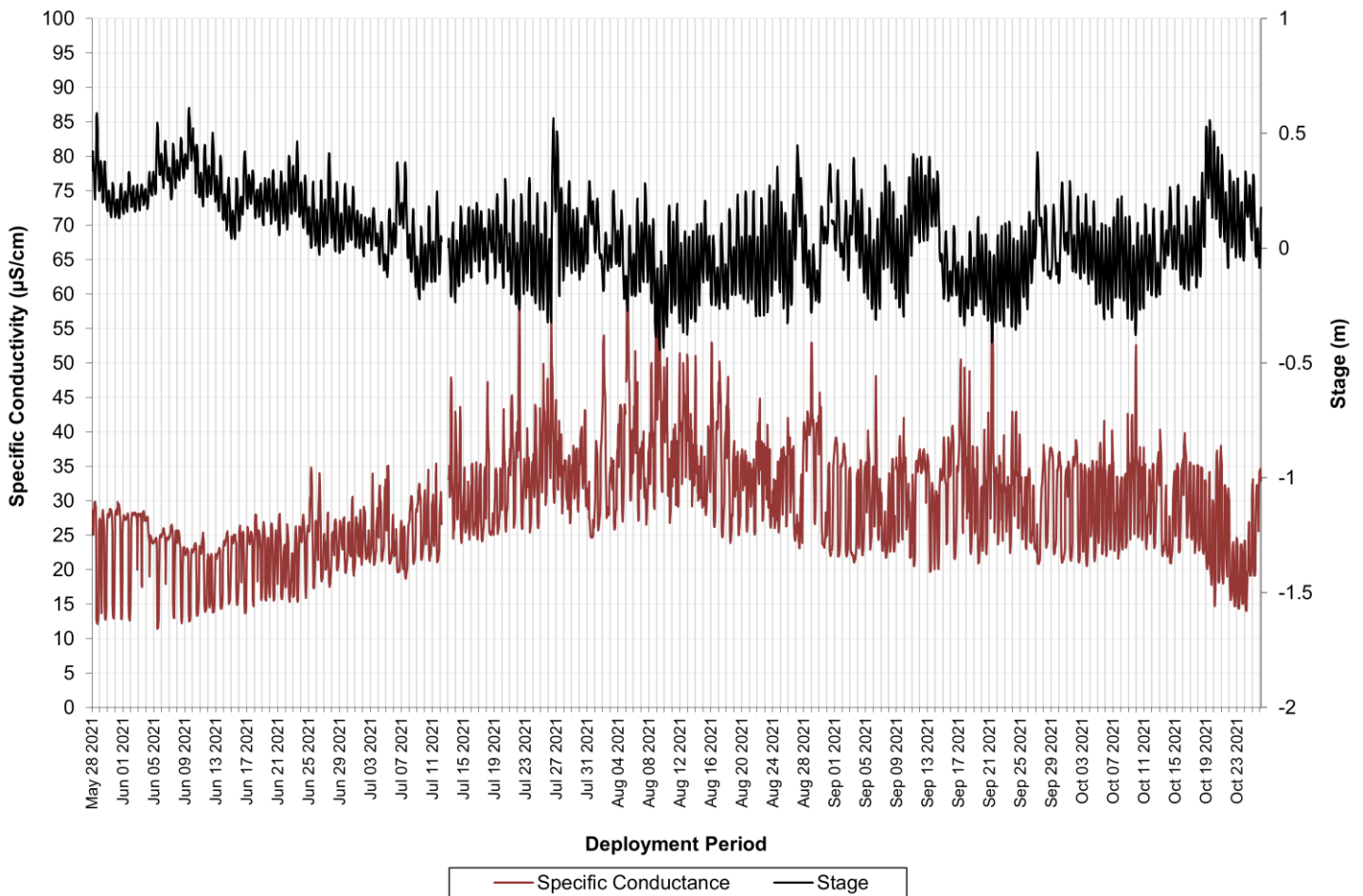


Figure 27: Specific Conductivity & Stage at Churchill River at English Point

| Specific Conductivity ($\mu\text{S}/\text{cm}$) | 2021 | 2020 | 2019 |
|---|------|------|------|
| Min | 11.4 | 16.9 | 9.7 |
| Max | 60.8 | 52.8 | 51.6 |
| Median | 28.2 | 27.2 | 26.7 |

Dissolved Oxygen

- Over the 2021 deployment season, dissolved oxygen ranged from 8.34 mg/L to 15.0 mg/L, with a median value of 10.0mg/L (Figure 28). Percent saturation ranged from 82.8% to 122.6%, with a median value of 97.5% (Figure 28), which was slightly lower than previous seasons.
- Dissolved oxygen content displayed typical daily and seasonal fluctuations. Percent saturation was generally consistent throughout the deployment season. Dissolved oxygen values were above the CCME’s Guidelines for the Protection of Other & Early Life Stages (6.5mg/L and 9.5mg/L respectively) for most of the deployment season. Exceptions occurred during July and August when water temperatures were highest, which is to be expected.

Dissolved Oxygen & Water Temperature at Churchill River at English Point

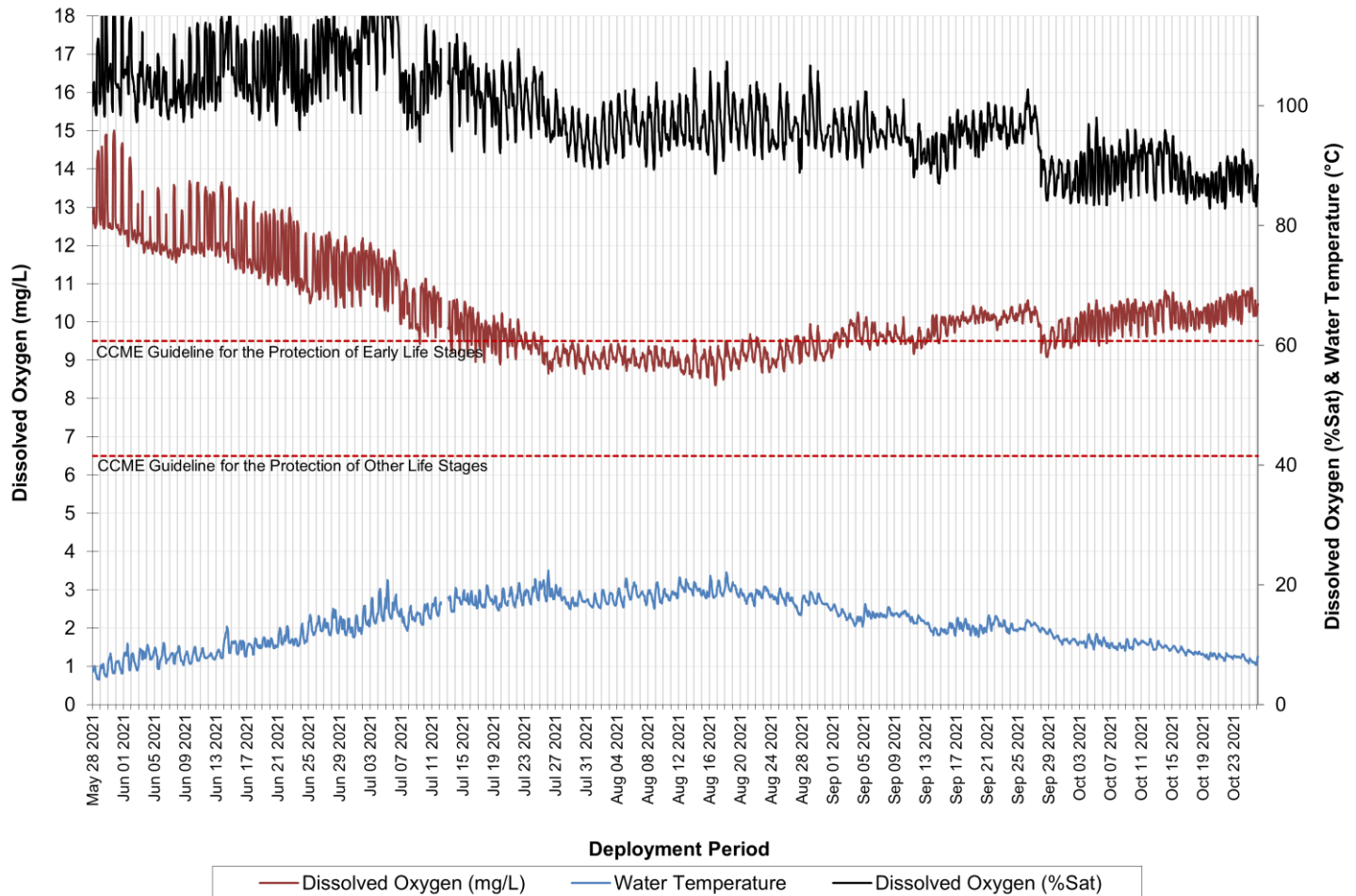


Figure 28: Dissolved Oxygen & Water Temperature at Churchill River at English Point

| Dissolved Oxygen (mg/L) | 2021 | 2020 | 2019 | | Dissolved Oxygen (% Sat) | 2021 | 2020 | 2019 |
|-------------------------|-------|-------|-------|--|--------------------------|-------|-------|-------|
| Min | 8.34 | 8.67 | 8.99 | | Min | 82.8 | 86.6 | 84.1 |
| Max | 15.00 | 12.19 | 14.4 | | Max | 122.6 | 112.7 | 113.7 |
| Median | 10.00 | 9.83 | 10.79 | | Median | 97.5 | 99.9 | 100.2 |

Turbidity & Precipitation

- Over the 2021 deployment season, turbidity ranged from 0 NTU to 2264 NTU, with a median value of 10.3 NTU (Figure 29). A median value of 10.3 NTU indicates that there is significant natural background turbidity at this station, and is comparable to previous seasons.
- Turbidity increases were often associated with precipitation events; however, high winds and tidal influences at this station also contribute to increased turbidity levels given the sandy nature of the riverbed. Precipitation and wind speed data were obtained from the Churchill River at End of Mud Lake Road Climate Station.

Turbidity & Precipitation at Churchill River at English Point

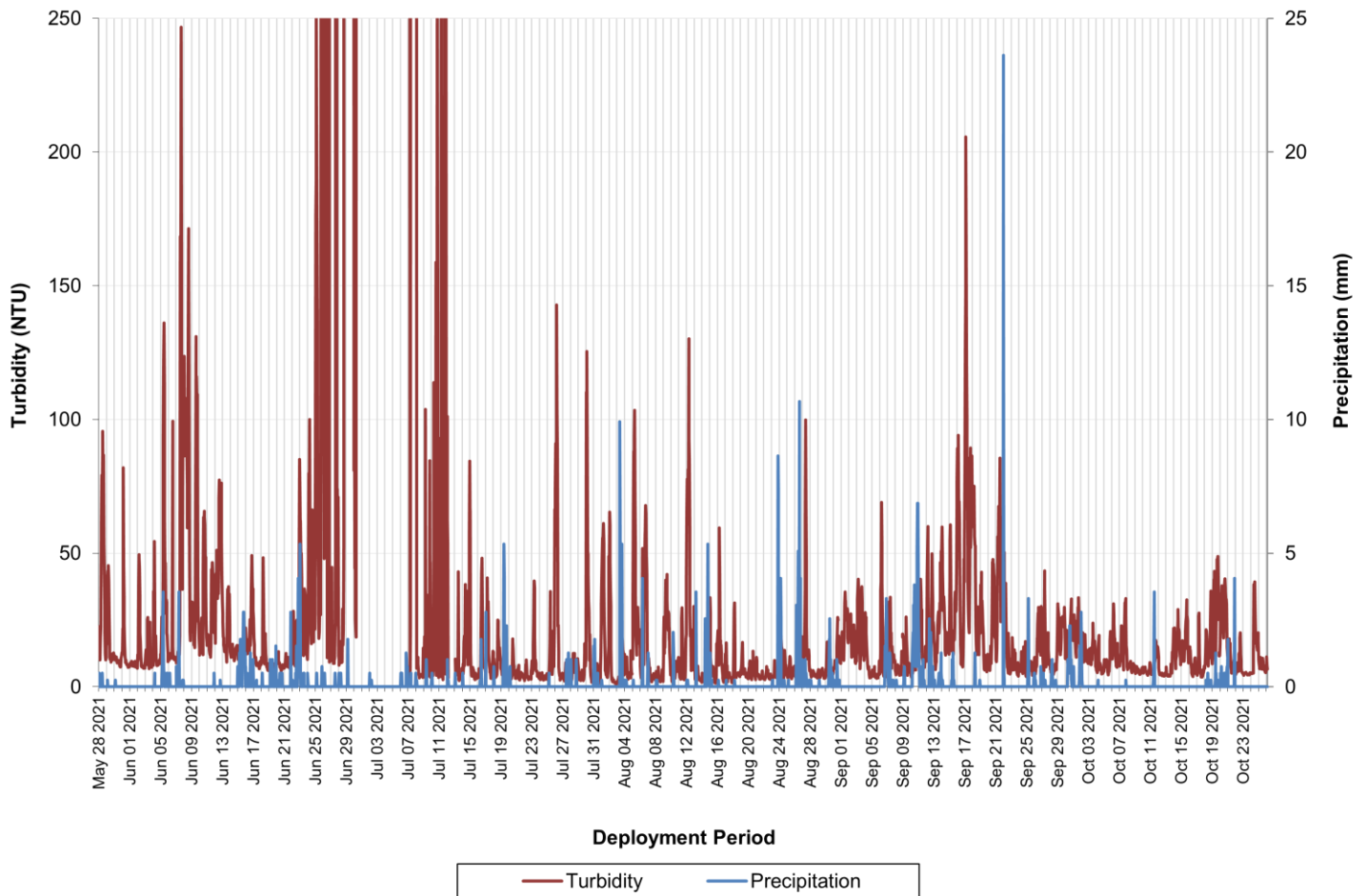


Figure 29: Turbidity, Stage & Precipitation at Churchill River at English Point

| Turbidity (NTU) | 2021 | 2020 | 2019 |
|-----------------|------|------|------|
| Min | 0.0 | 0.1 | 0.0 |
| Max | 2264 | 2574 | 1314 |
| Median | 10.3 | 5.6 | 8.9 |

Stage

- Over the 2021 deployment season, stage ranged from -0.442 m to 0.610 m, with a median value of 0.053m (Figure 30), which was slightly higher than previous seasons.
- While stage is relatively consistent over the course of the deployment season, stage values at this station do fluctuate considerably on a daily basis due to tidal influences from the Atlantic Ocean.
- Water Survey of Canada (ECCC) is responsible for QA/QC of water quantity data. Corrected data can be obtained upon request.

Stage & Precipitation at Churchill River at English Point

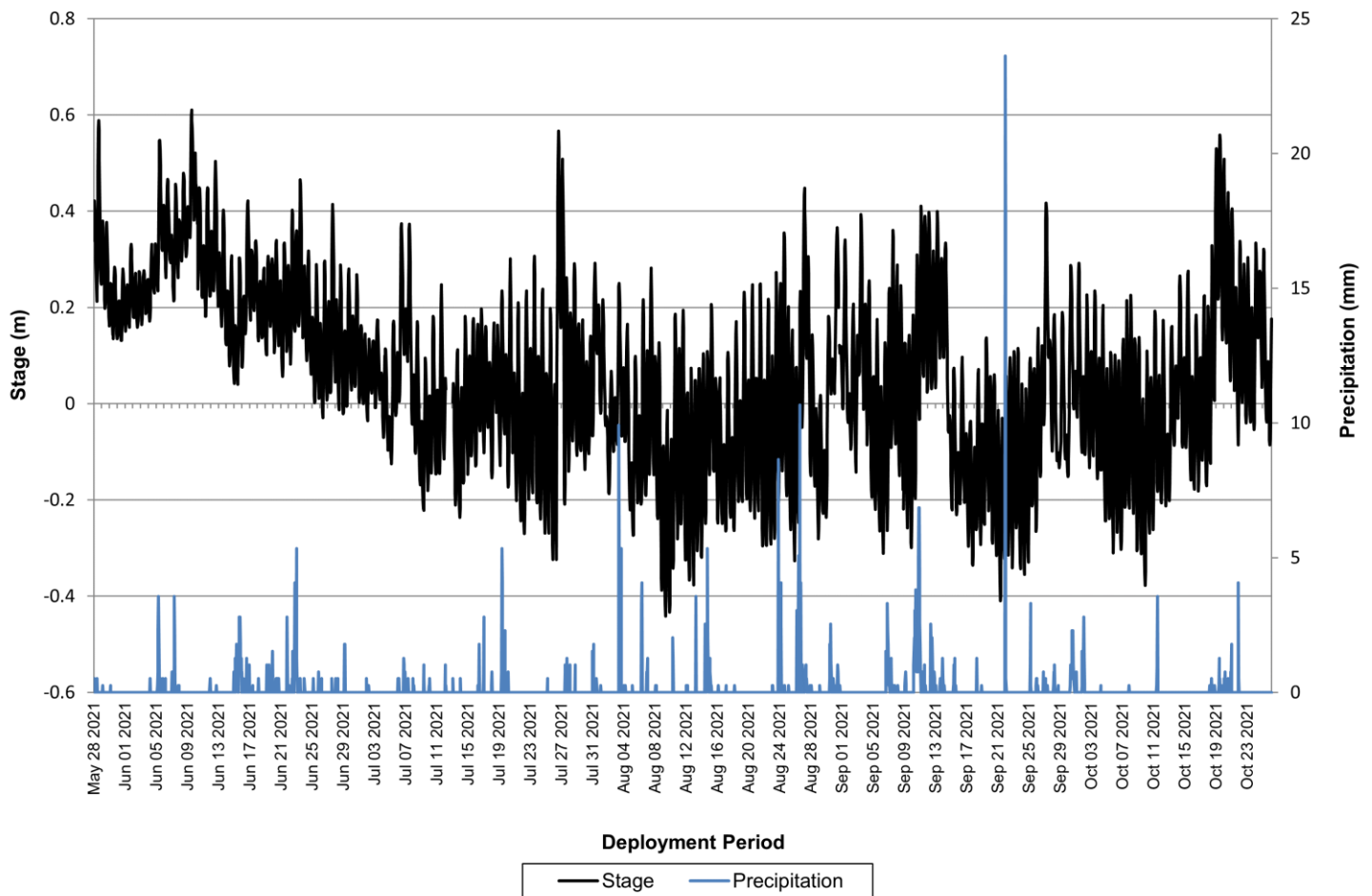


Figure 30: Stage & Precipitation at Churchill River at English Point

| Stage (m) | 2021 | 2020 | 2019 |
|-----------|--------|--------|--------|
| Min | -0.442 | -0.957 | -1.761 |
| Max | 0.61 | 0.564 | 0.784 |
| Median | 0.053 | -0.194 | -0.206 |

Station Comparison

Temperature

- Water temperatures at each of the four stations on the Churchill River displayed a similar trend throughout the 2021 deployment season (Figure 31). Overall, increases and decreases occurred at all stations around the same time, though to different extents.
- Water temperature was generally warmest at English Point, while this station also had the greatest diurnal fluctuations. At the peak of the summer months, the coolest water temperatures were recorded below Metchin River, while the warmest were recorded at English Point.

Water Temperature at the Real-Time Water Quality Monitoring Stations

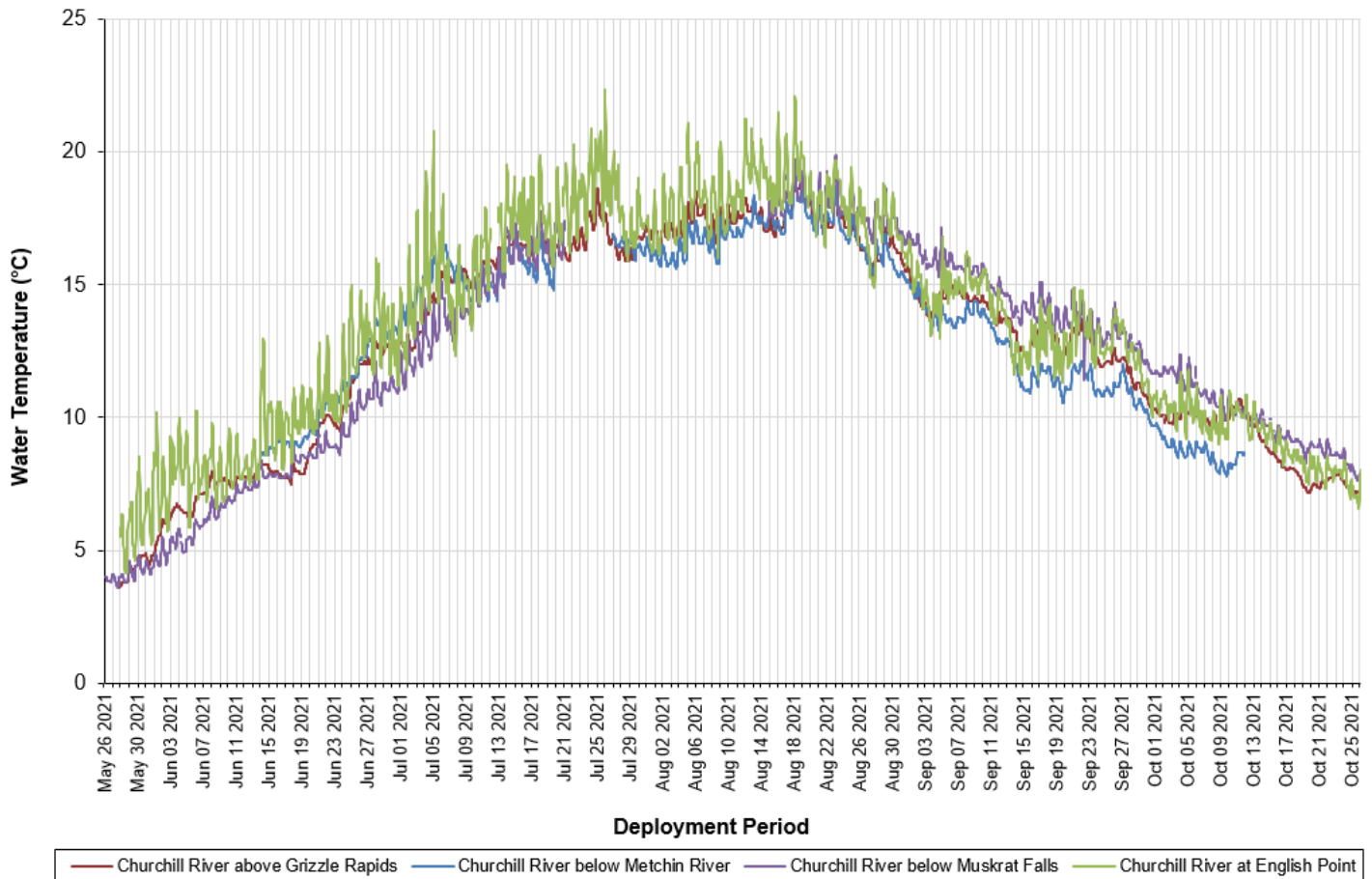


Figure 31: Water Temperature at all Stations on the Churchill River in 2021

| Temperature (°C) | CRbelowMR | CRaboveGR | CRbelowMF | CRatEngPt |
|------------------|-----------|-----------|-----------|-----------|
| Min | 7.8 | 3.6 | 3.6 | 4.2 |
| Max | 18.9 | 19.2 | 19.9 | 22.4 |
| Median | 14.2 | 13.2 | 12.3 | 13.6 |

- Water temperatures at each of the four stations on the Churchill River displayed clear seasonal trends in response to changes in ambient air temperatures throughout the deployment season (Figure 32).

Water Temperature & Air Temperature at the Real-Time Water Quality Monitoring Stations

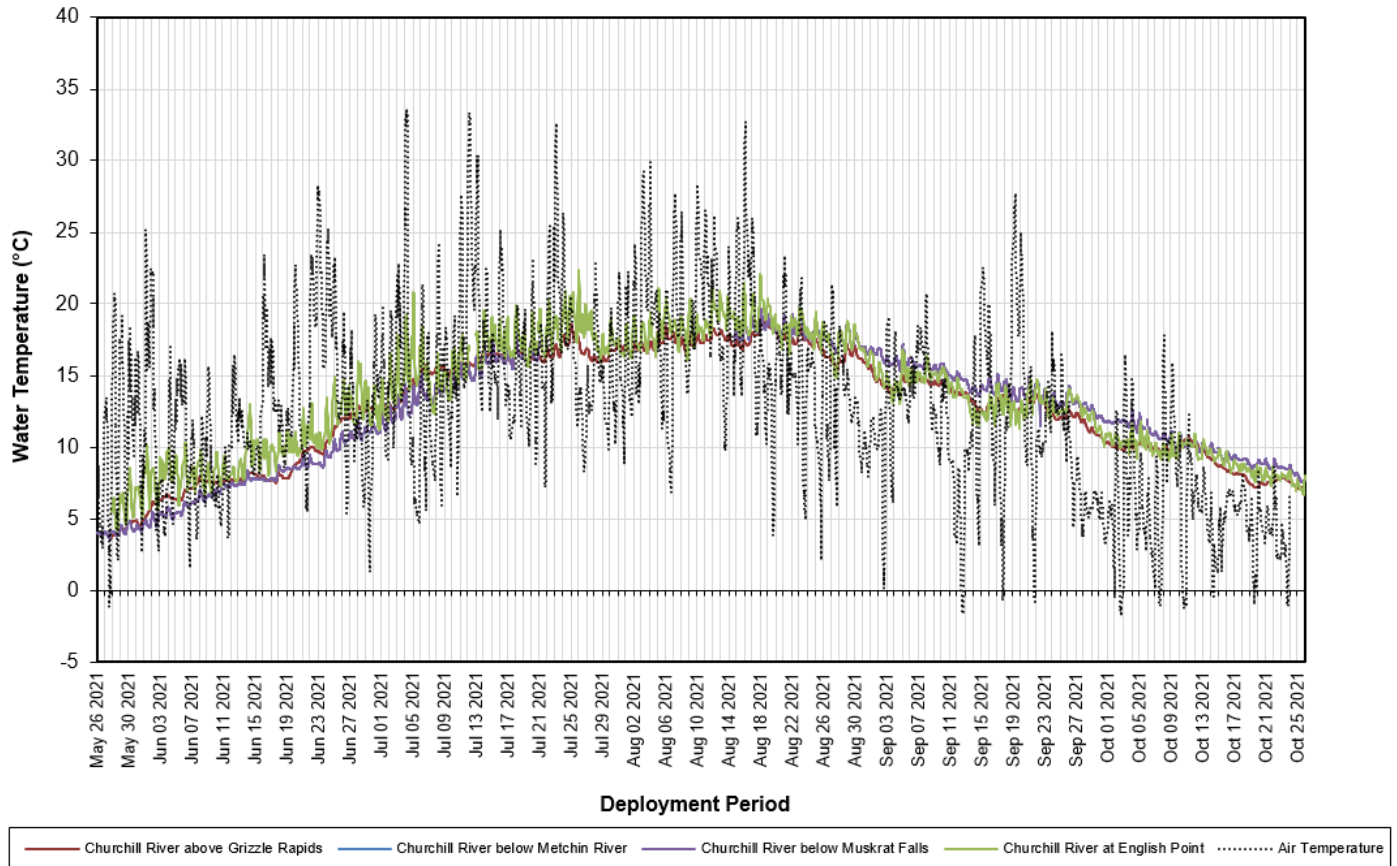


Figure 32: Water Temperature & Air Temperature at all Stations on the Churchill River in 2021

pH

- pH values at each of the four stations on the Churchill River displayed similar trends throughout the 2021 deployment season (Figure 33).
- Median pH values were similar at all four stations, remaining within the CCME’s Guidelines for the Protection of Aquatic Life for the majority of the deployment season.
- pH values at English Point showed the greatest daily variation throughout the deployment season due to the position of this station at the mouth of the Churchill River and tidal influences from the Atlantic Ocean.

pH at the Real-Time Water Quality Monitoring Stations

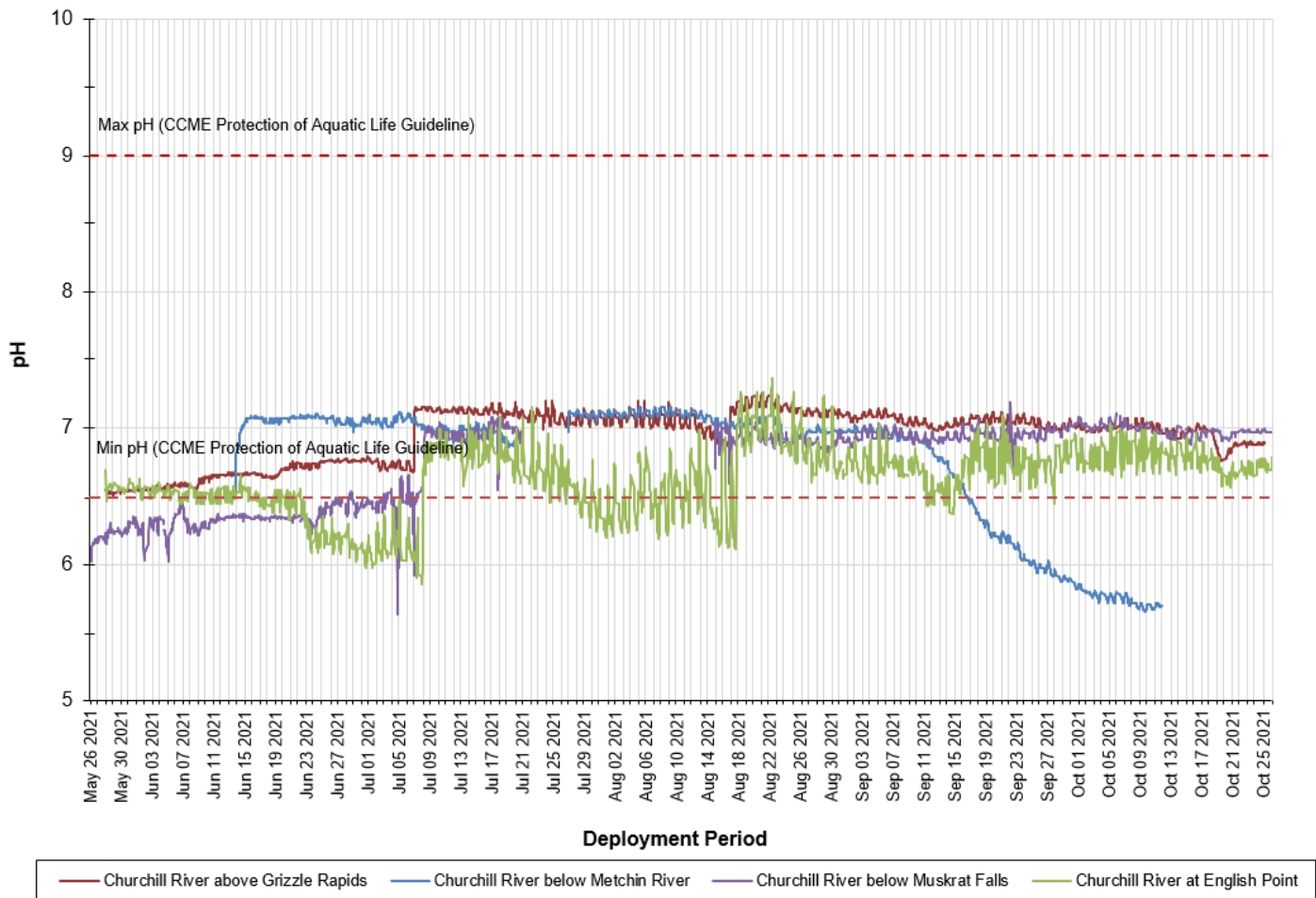


Figure 33: pH at all Stations on the Churchill River in 2021

| pH | CRbelowMR | CRaboveGR | CRbelowMF | CRatEngPt |
|---------------|-----------|-----------|-----------|-----------|
| Min | 5.65 | 6.50 | 5.63 | 5.85 |
| Max | 7.17 | 7.26 | 7.19 | 7.38 |
| Median | 7.00 | 7.02 | 6.93 | 6.66 |

Specific Conductivity

- Specific conductivity values at each of the four stations on the Churchill River displayed similar trends throughout the 2021 deployment season, with the exception of the station at English Point (Figure 34).
- Specific conductivity is generally very stable on the Churchill River (above English Point), fluctuating very little over the course of a deployment period. In contrast, specific conductivity at English Point is highly variable, fluctuating significantly twice daily due to the tidal influences of the Atlantic Ocean.

Specific Conductivity at the Real-Time Water Quality Monitoring Stations

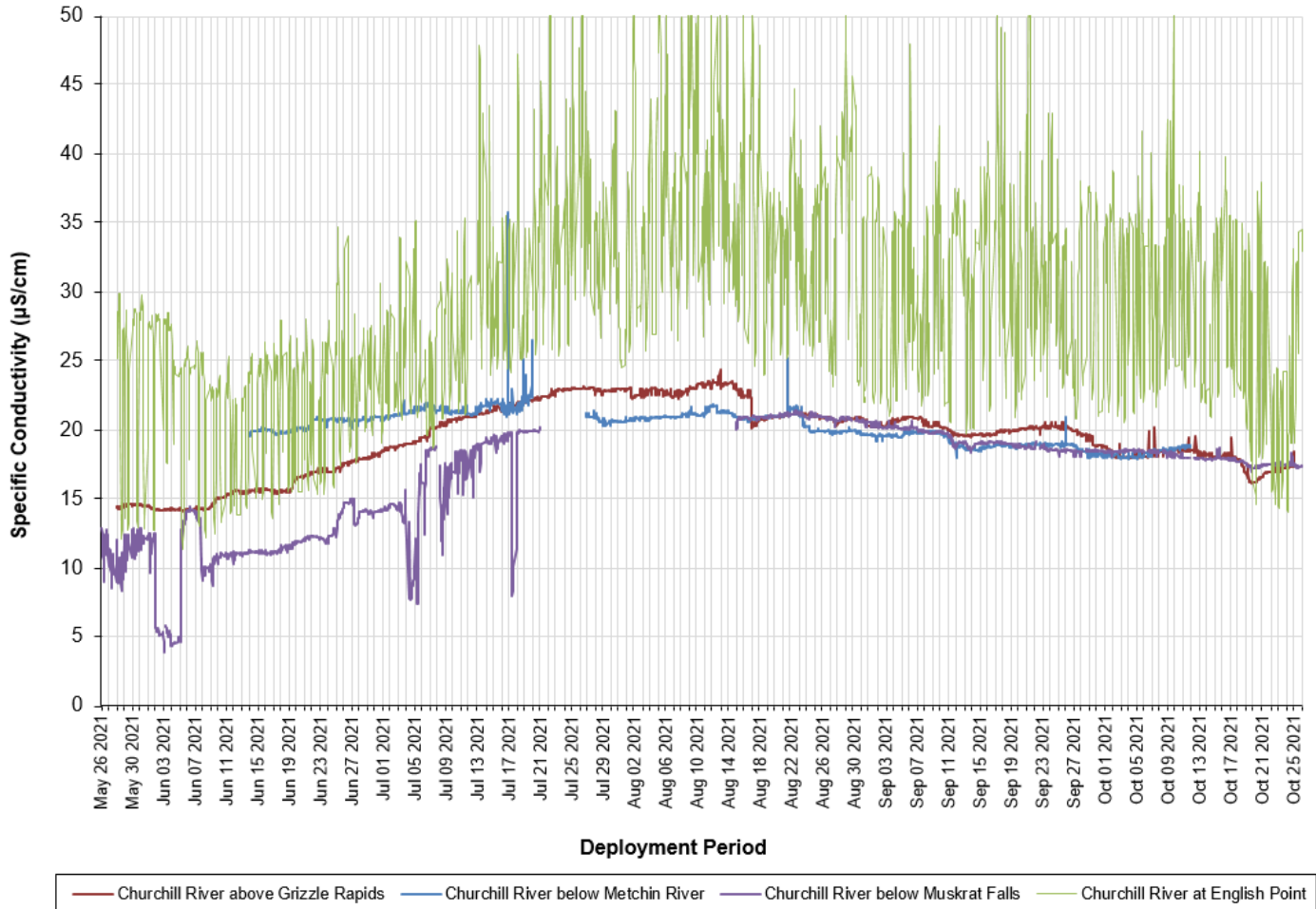


Figure 34: Specific Conductivity at all Stations on the Churchill River in 2021

| Specific Conductivity ($\mu\text{S/cm}$) | CRbelowMR | CRaboveGR | CRbelowMF | CRatEngPt |
|--|-----------|-----------|-----------|-----------|
| Min | 17.9 | 14.0 | 3.8 | 11.4 |
| Max | 35.9 | 24.4 | 21.5 | 60.8 |
| Median | 20.3 | 20.0 | 18.3 | 28.2 |

Dissolved Oxygen

- Dissolved oxygen content and percent saturation values at each of the four stations on the Churchill River were similar throughout the 2021 deployment season (Figure 35a and 35b).
- Dissolved oxygen (mg/L) displayed a very clear inverse relationship with water temperature, and followed a distinct seasonal trend whereby values decreased through spring and early summer, then increased through late summer into fall (Figure 35a). In contrast, dissolved oxygen (% Sat) remained relatively stable across the deployment season at all stations (Figure 35b).
- Generally, dissolved oxygen content is highest at the station below Muskrat Falls compared to all other stations due to its downstream proximity to Muskrat Falls. Dissolved oxygen content at all stations remained above the CCME’s Guideline for the Protection of Early Life Stages (9.5mg/L) for the majority of the 2021 deployment season, dipping below the CCME’s Guideline for the Protection of Early Life Stages during the warmer summer months. All stations remained above the CCME’s Guideline for the Protection of Other Life Stages (6.5mg/L) for the duration of the 2021 deployment season.

Dissolved Oxygen & Air Temperature at the Real-Time Water Quality Monitoring Stations

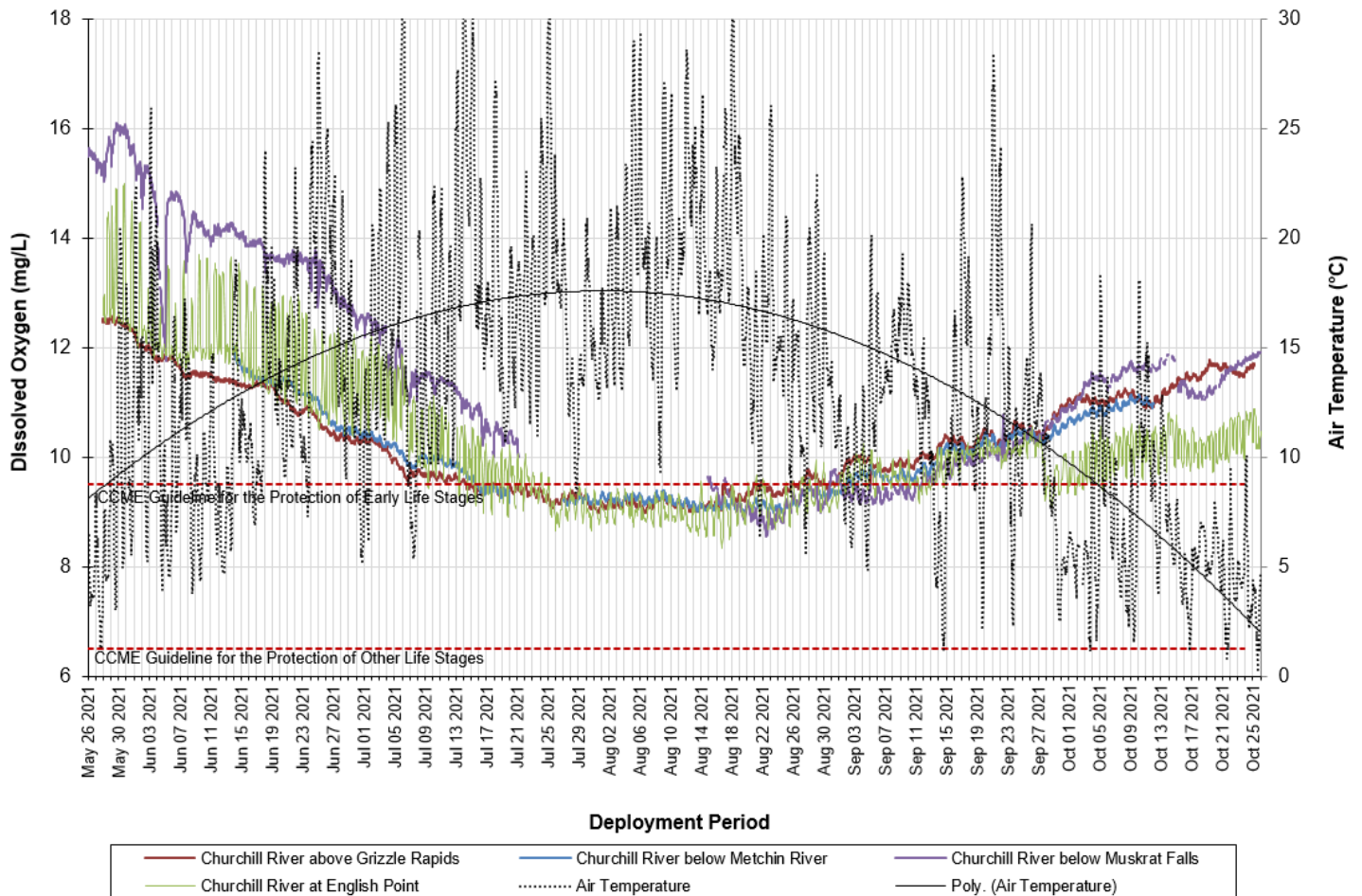


Figure 35a: Dissolved Oxygen (mg/L) at all Stations on the Churchill River in 2021

Dissolved Oxygen at the Real-Time Water Quality Monitoring Stations

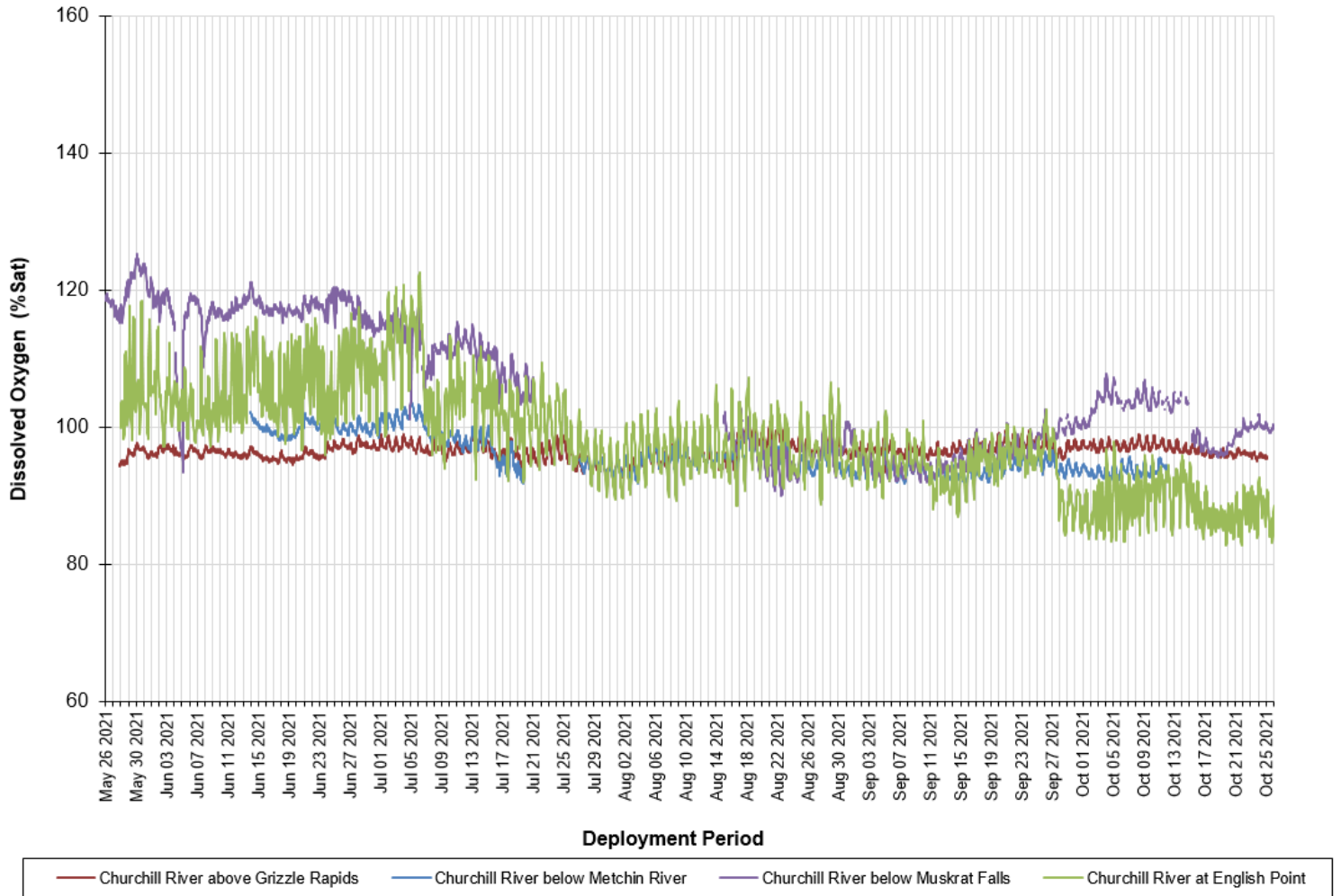


Figure 35b: Dissolved Oxygen (%Sat) at all Stations on the Churchill River in 2021

| | Dissolved Oxygen (mg/L) | | | | | Dissolved Oxygen (% Sat) | | | |
|---------------|-------------------------|-----------|-----------|-----------|--|--------------------------|-----------|-----------|-----------|
| | CRbelowMR | CRaboveGR | CRbelowMF | CRatEngPt | | CRbelowMR | CRaboveGR | CRbelowMF | CRatEngPt |
| Min | 8.96 | 8.97 | 8.55 | 8.34 | | 91.4 | 92.4 | 90.1 | 82.8 |
| Max | 12.0 | 12.57 | 16.09 | 15.0 | | 103.9 | 101.3 | 125.3 | 122.6 |
| Median | 9.86 | 10.22 | 11.28 | 10.0 | | 94.9 | 96.7 | 103.5 | 97.5 |

Turbidity

- Turbidity values at each of the four stations on the Churchill River were somewhat similar during the 2021 deployment season (Figure 36), with median values ranging from 0 NTU to 13.1 NTU.
- Turbidity values showed the most variation at below Muskrat Falls and at English Point, which is to be expected given the sandy nature of the riverbed at these locations.

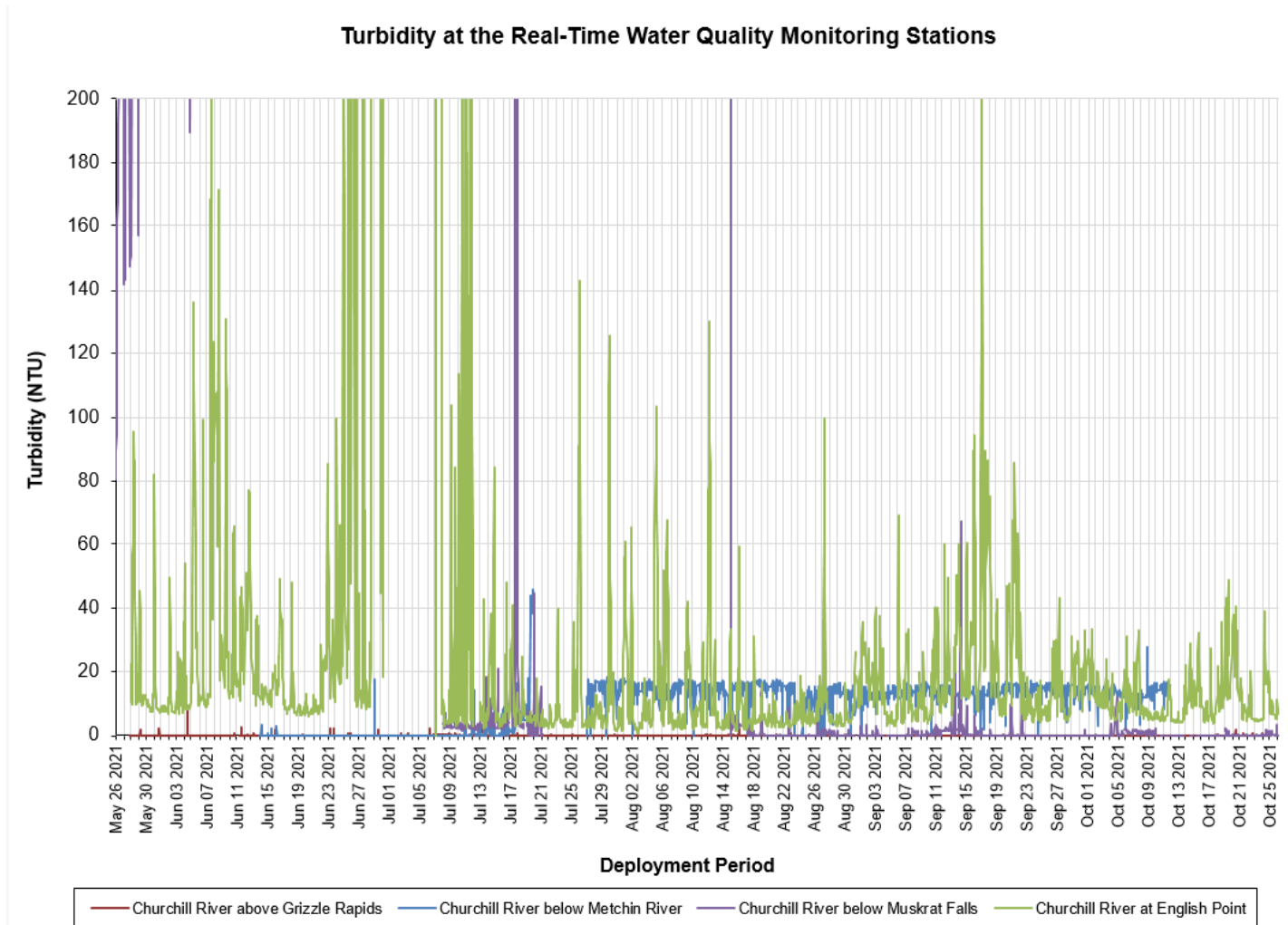


Figure 36: Turbidity at all Stations on the Churchill River in 2021

| Turbidity (NTU) | CRbelowMR | CRaboveGR | CRbelowMF | CRatEngPt |
|-----------------|-----------|-----------|-----------|-----------|
| Min | 0.0 | 0.0 | 0.0 | 0.0 |
| Max | 46.3 | 9.7 | 338 | 2264 |
| Median | 13.1 | 0.0 | 1.2 | 10.3 |

Stage

- Stage values on the Churchill River varied significantly from one station to the next during the 2021 deployment season (Figure 37), with the exception of at the below Muskrat Falls and at English Point stations.
- Stage was generally quite stable at each station across the deployment season. The greatest variability in stage was observed at English Point, where values are greatly affected by tidal influences from the Atlantic Ocean.
- Stage generally decreases as you move downstream through the Churchill River network, with the highest values being observed below Metchin River and the lowest values being observed at English Point.
- Water Survey of Canada (ECCC) is responsible for QA/QC of water quantity data. Corrected data can be obtained upon request.

Stage at the Real-Time Water Quality Monitoring Stations

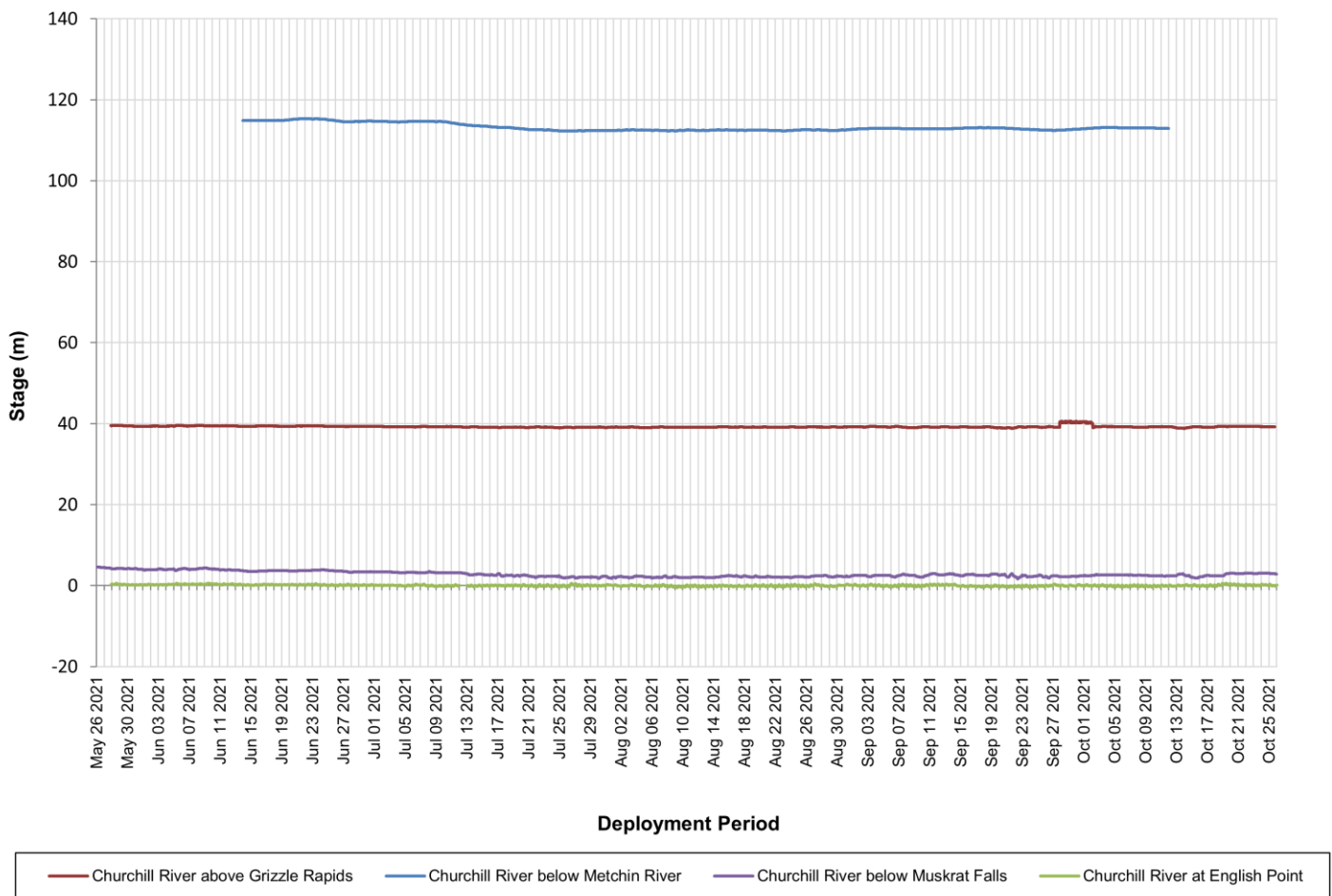


Figure 37: Stage at all Stations on the Churchill River in 2021

| Stage (m) | CRbelowMR | CRaboveGR | CRbelowMF | CRatEngPt |
|---------------|-----------|-----------|-----------|-----------|
| Min | 112.251 | 38.826 | 1.700 | -0.442 |
| Max | 115.323 | 40.653 | 4.613 | 0.61 |
| Median | 112.863 | 39.199 | 2.56 | 0.053 |

Conclusions

- Water quality monitoring instruments were successfully deployed on the Churchill River for different lengths of time during the late spring and fall of 2021. The station above Muskrat Falls was not deployed at all in 2021 due to safety concerns that hindered access to that site.
- In most cases, weather related events can explain fluctuations in water levels. The deployed stations continue to perform well at capturing water quality data along different reaches of the river. The English Point station provides a last measurement of water quality in the Lower Churchill River before entering Lake Melville. This station is affected by tidal influences from the Atlantic Ocean.
- Regular visits on a 30-50 day deployment schedule were mostly adhered to for the 2021 deployment season. This has provided good quality data with limited drift. The effects of bio fouling rarely impact the instruments due to the cold pristine nature of the river and regular monthly maintenance. Sediment build-up around the instrument can result in inaccurate data at times given the sandy nature of the riverbed, and instruments sometimes come out of the water due to fluctuating stage levels.
- Instruments performed well for much of the deployment season with only limited disruptions to data collection; Instruments at Churchill River below Metchin River and Churchill River below Muskrat Falls were out of the water from July 20 – July 27 (CRbelowMR) and July 21 – August 14 (CRbelowMF) due to dropping water levels, resulting in skewed data, which has been removed as it does not accurately reflect the water quality data of those stations.
- Data collected in 2021 was comparable with datasets from previous years. Generally speaking, water quality parameters do not tend to vary significantly from year to year unless influenced by an anthropogenic source.
- Water temperatures followed a typical seasonal trend at all stations in the network, whereby temperatures increased through the early summer, then decreased through late summer into fall.
- The majority of recorded pH values were within the CCME's Guidelines for the Protection of Aquatic Life, with the exception of several periods of time at the stations below Metchin River, below Muskrat Falls and at English Point.
- During the warmer summer months, dissolved oxygen at all stations fell below the CCME's Guideline for the Protection of Early Life Stages (9.5mg/L). Dissolved oxygen values at all stations remained above the CCME's Guideline for the Protection of Other Life Stages (6.5mg/L) for the duration of deployment.
- Specific conductivity is generally stable on the Churchill River (above English Point), experiencing only minor fluctuations during deployment. In contrast, specific conductivity at English Point is highly variable, experiencing significant daily fluctuations due to tidal influences from the Atlantic Ocean. As the tide comes in, specific conductivity increases as dissolved solids and salinity increase; the opposite is true as the tide goes out.
- Turbidity was variable along the Churchill River in 2021, with median values ranging from 0.0 NTU to 13.1 NTU. The stations below Muskrat Falls and at English Point showed frequent turbidity events as expected, whereas Metchin River was uncharacteristically experiencing higher background turbidity this year.

Path Forward

In order for this agreement to be successful, it is essential to continually evaluate and move forward. The 2021 deployment season was successful in providing water quality data for the Churchill River. The following is a list of planned activities to be carried out in the upcoming year. This list also includes some multi-year activities planned in previous years that are still in progress.

- WRMD staff will deploy RTWQ instruments in spring 2022 when ice conditions allow and perform regular site visits throughout the 2022 deployment season for calibration and maintenance of the instruments.
- ECCC staff will perform regular site visits to ensure water quantity instrumentation is correctly calibrated and providing accurate measurements.
- Nalcor will continue to be informed of data trends and any significant water quality events in the form of a monthly deployment report when the deployment season begins. Nalcor will also receive an annual report summarizing the events of the deployment season.
- Nalcor will continue to receive batch datasets of all RTWQ data if requested. Raw data will be provided if requested.
- Open communication lines will continue to be maintained between WRMD, ECCC and Nalcor employees involved with the agreement in order to respond to emerging issues on a proactive basis.
- WRMD will continuously update the TSS-Turbidity model for the stations above and below Muskrat Falls as new grab sample data becomes available. The model will then be tested and validated in consultation with Nalcor or their consultants as necessary.
- Research into the use of remote sensing (using satellite imagery) to predict/map water quality parameters (i.e. turbidity and TSS) will continue in 2022. Satellite imagery will be acquired by WRMD to further this area of research.

Prepared by:
Brandon Mesher – Environmental Scientist
Department of Environment and Climate Change
Water Resources Management Division
Email: brandonmesher@gov.nl.ca