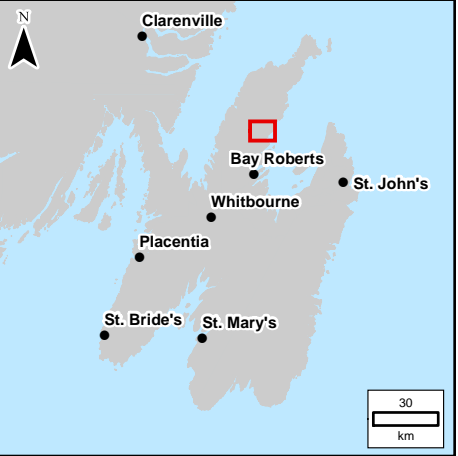
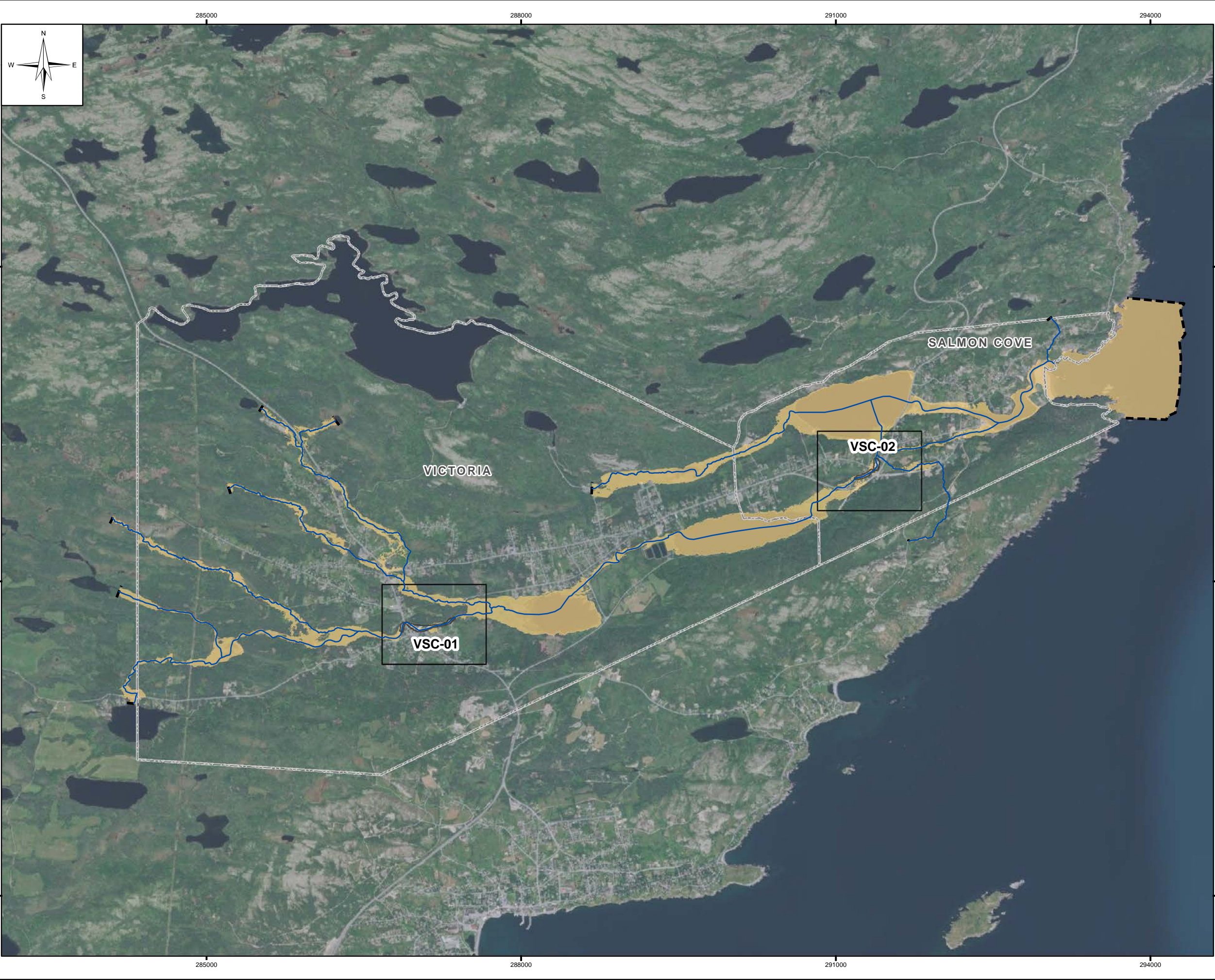


APPENDIX P

Comparison of Historical and Updated Flood Risk
Maps





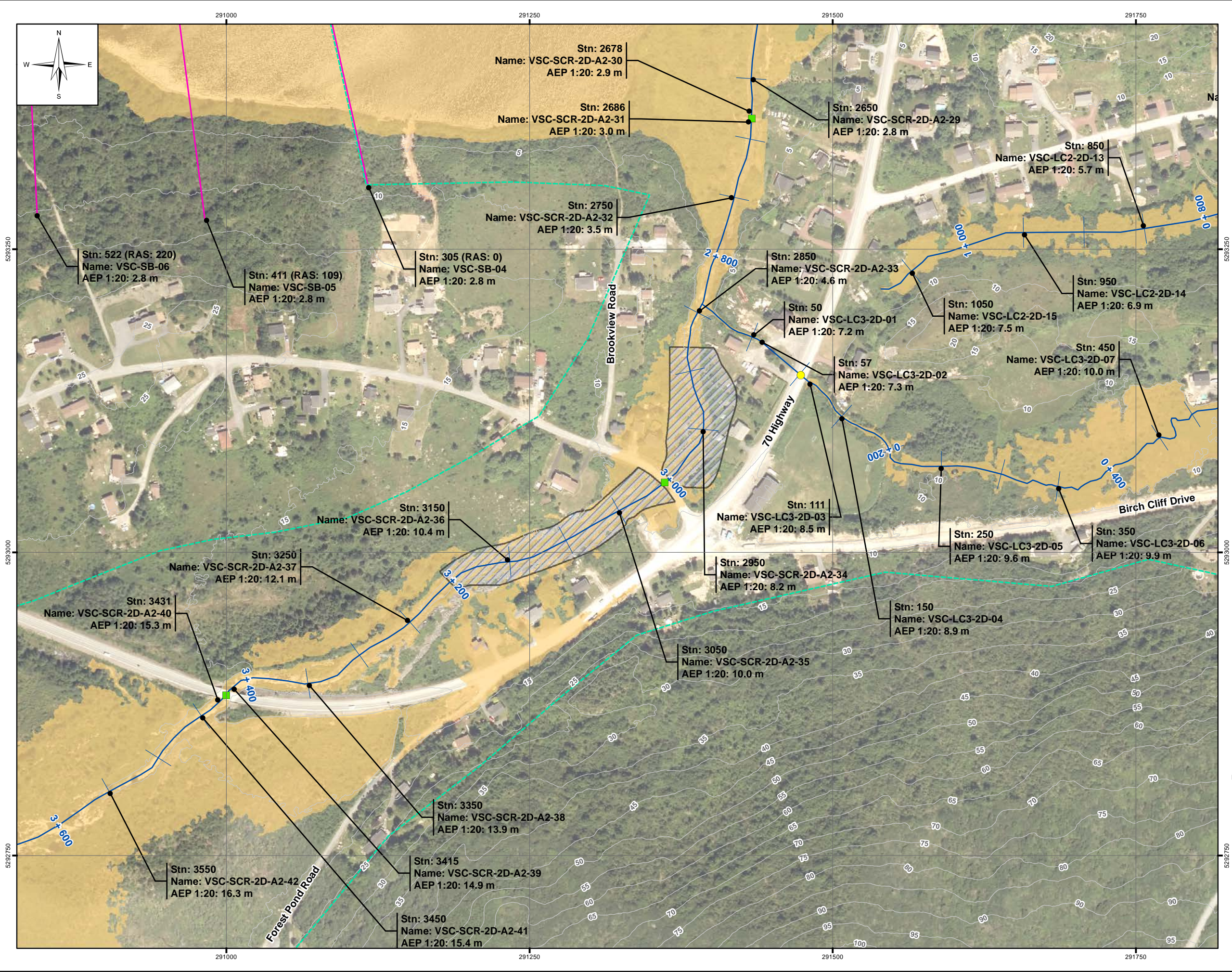
- LEGEND:**
- River/Creek Centreline
 - Limit of Mapping
 - Map Extents
 - Municipal Boundary
 - 1:20 Year Flood Zone
 - 1:20 Year Historical Flood Zone

NOTES:
1. Imagery is supplied by ESRI/Maxar, dated 2020.

250 0 250 500 750 1,000
Metres
SCALE: 1:35,000 METRIC 11"x17"

All units are metric and in metres unless otherwise specified.
Horizontal Projection: North American Datum 1983 CSRS (NAD83), Modified Transverse Mercator Projection (MTM)
Zone 1, Elevations are in metres above sea level (MSL).
Canadian Geodetic Vertical Datum 2013 (CGVD2013).

0	22/09/30	ISSUED WITH FINAL REPORT	ALW	DSB
NO.	YYMMDD	DESCRIPTION	ISSUED BY	CHECK BY
REVISIONS / ISSUE				
				
CLIMATE CHANGE FLOOD RISK MAPPING STUDY FOR PLACENTIA, CARBONEAR, VICTORIA AND SALMON COVE				
1:20 YR CURRENT CLIMATE AND CURRENT DEVELOPMENT CONDITION (CC-CD) WITH HISTORICAL FLOOD ZONE - OVERVIEW MAP				
SEPTEMBER 2022		FIGURE 1.1		REV: 0

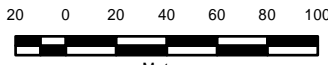


LEGEND:

- Stn: 3354 (RAS: 1)
Name: VSC-DB-48
AEP 1:20: 103.3 m
- Cross Section
- Stn: 3350
Name: VSC-DB-2D-47
AEP 1:20: 102.3 m
- 2D Annotation
- 1:20 Year Flood Zone
- 1:20 Year Historical Flood Zone
- River/Creek Centreline
- 5 m LiDAR Contour
- Limit of 2D Modelling
- Modelled Bridge
- Modelled Culvert

NOTES:



- Imagery is supplied by the Government of Newfoundland and Labrador. (Capture date: 2020)
- Topography shown was developed by KGS Group from the HRDEM from Natural Resources Canada (NRCAN). (Capture date: June and July, 2020)

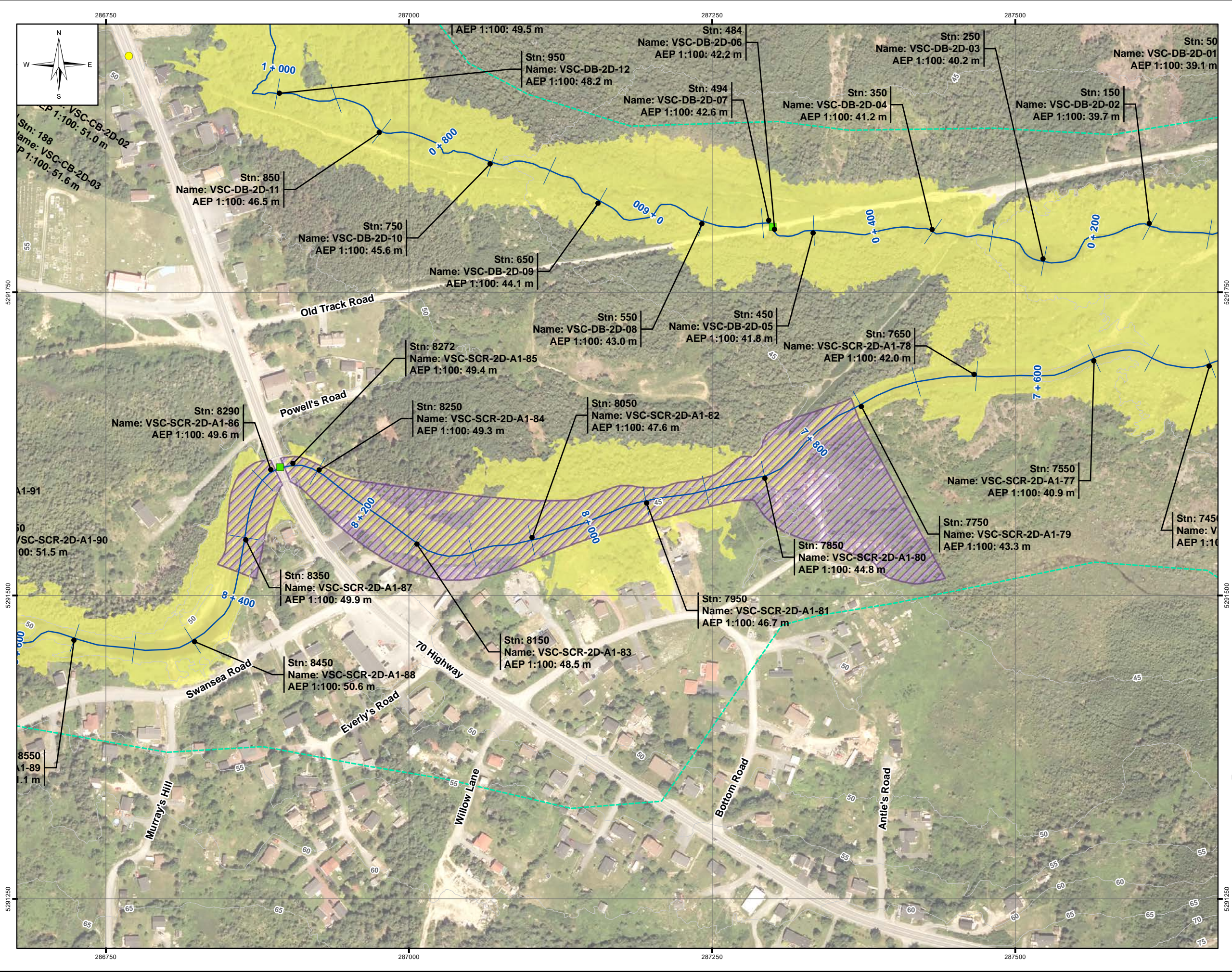


SCALE: 1:3,000 METRIC 11"x17"

All units are metric and in metres unless otherwise specified.
Horizontal Projection: North American Datum 1983 CSRS (NAD83). Modified Transverse Mercator Projection (MTM) Zone 1. Elevations are in metres above sea level (MSL). Canadian Geodetic Vertical Datum 2013 (CGVD2013).

02/26/2020

0	22/09/30	ISSUED WITH FINAL REPORT	ALW	DSB
NO.	YYMMDD	DESCRIPTION	ISSUED BY	CHECK BY
REVISIONS / ISSUE				
				
CLIMATE CHANGE FLOOD RISK MAPPING STUDY FOR PLACENTIA, CARBONEAR, VICTORIA AND SALMON COVE				
1:20 YR CURRENT CLIMATE AND CURRENT DEVELOPMENT CONDITION (CC-CD) WITH HISTORICAL FLOOD ZONE - VSC-02				
SEPTEMBER 2022		FIGURE 1.2		REV: 0

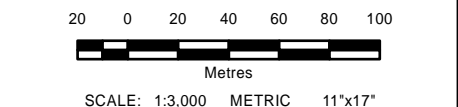


LEGEND:



- Stn: 3354 (BAS: 1)
Name: VSC-DB-2D-48
AEP 1:100: 103.3 m
Cross Section
- Stn: 3360
Name: VSC-DB-2D-47
AEP 1:100: 102.4 m
2D Annotation
- 1:100 Year Flood Zone
- 1:100 Year Historical Flood Zone
- River/Creek Centreline
- 5 m LiDAR Contour
- Limit of 2D Modelling
- Modelled Bridge
- Modelled Culvert

NOTES:

- Imagery is supplied by the Government of Newfoundland and Labrador. (Capture date: 2020)
- Topography shown was developed by KGS Group from the HRDEM from Natural Resources Canada (NRCAN). (Capture date: June and July, 2020)



All units are metric and in metres unless otherwise specified.
Horizontal Projection: North American Datum 1983 CSRS (NAD83). Modified Transverse Mercator Projection (MTM) Zone 1. Elevations are in metres above sea level (MSL). Canadian Geodetic Vertical Datum 2013 (CGVD2013).

0	22/09/30	ISSUED WITH FINAL REPORT	ALW	DSB			
NO.	YYMMDD	DESCRIPTION	ISSUED BY	CHECK BY			
REVISIONS / ISSUE							
							
CLIMATE CHANGE FLOOD RISK MAPPING STUDY FOR PLACENTIA, CARBONEAR, VICTORIA AND SALMON COVE							
1:100 YR CURRENT CLIMATE AND CURRENT DEVELOPMENT CONDITION (CC-CD) WITH HISTORICAL FLOOD ZONE - VSC-01							
SEPTEMBER 2022		FIGURE 1.4		REV: 0			

