

## **Development Considerations for the Island of Newfoundland (2020) Map Series**

In 2020, mapping was developed by the Policy, Planning and Natural Areas Division, Department of Environment and Climate Change, to illustrate the development pressures and considerations for the selection of areas proposed in the Protected Areas Plan for the Island of Newfoundland.

This map series includes municipal boundaries, the existing road network, all active and historical mining claims, commercial forestry, and hydroelectric infrastructure. The methodology for choosing proposed reserves for the Protected Areas Plan included prioritizing intact areas and avoiding areas of interest for forestry, agriculture, minerals, petroleum industries and other developments. The map series uses newer data and different methodology compared to the 2013 Human Footprint Analysis.



# Development Considerations for the Island of Newfoundland (2020) - Map 1 (Roads and Municipal Boundaries)

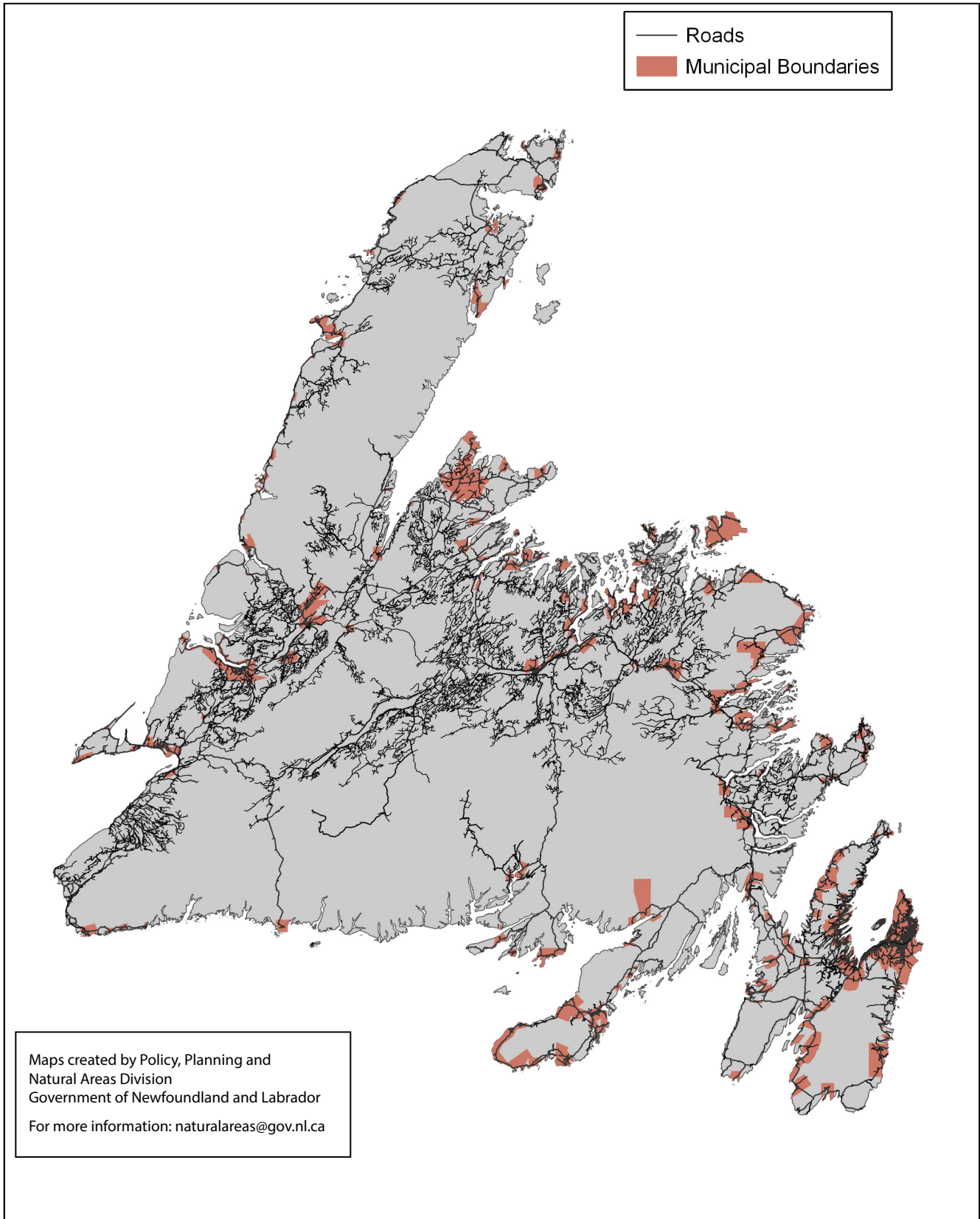


Figure 1: Map 1 of 6 of development considerations for the Island. Existing development and known areas with future development potential were considered in the selection of proposed protected areas for the Protected Areas Plan for the Island of Newfoundland. This information was made publicly available during the Phase 1 of the public consultation conducted by the Wilderness and Ecological Reserves Council between May 28, 2019 and October 1, 2020.



## Development Considerations for the Island of Newfoundland (2020) - Map 2 (Roads, Municipal Boundaries, Mineral Claims)

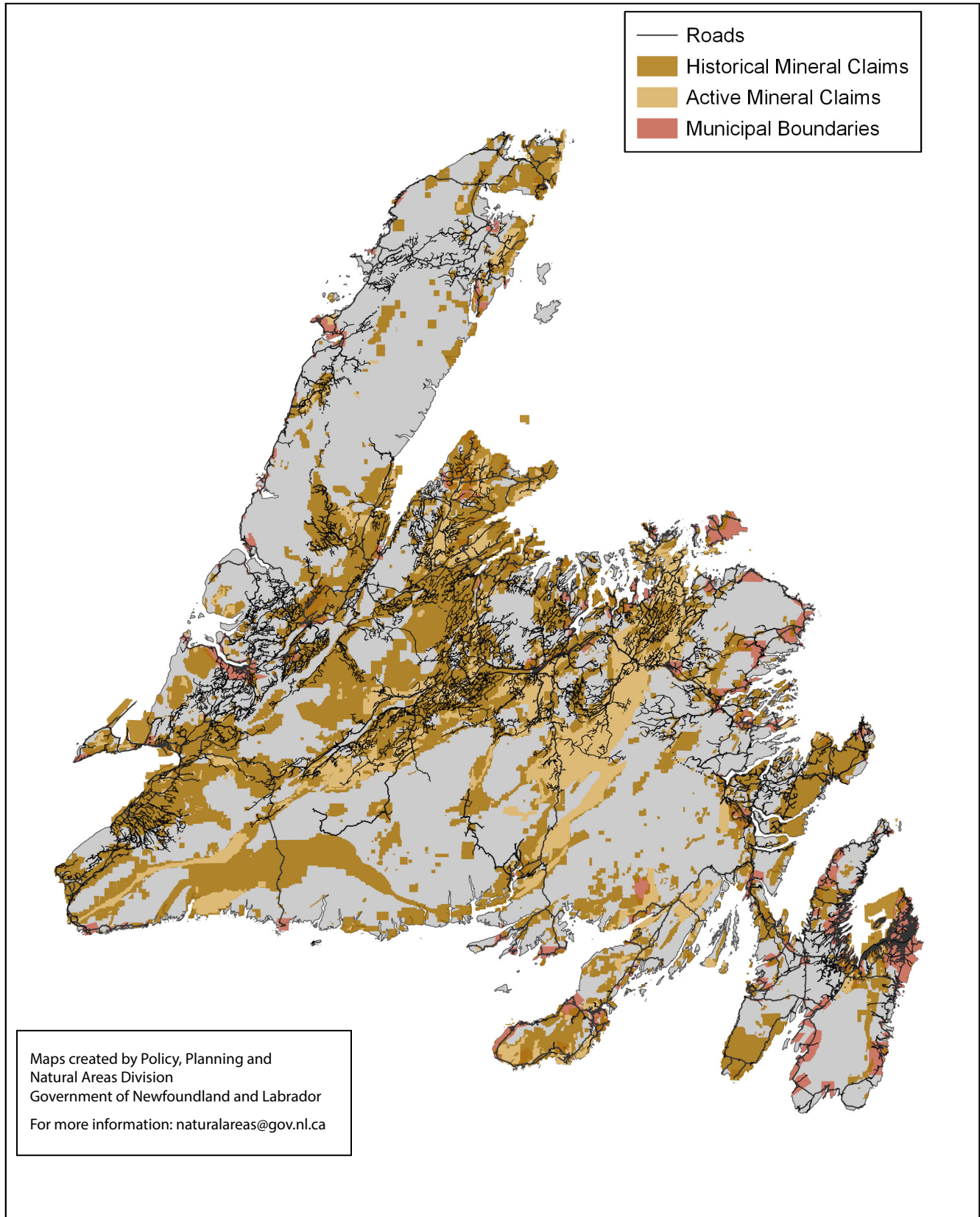


Figure 2: Map 2 of 6 of development considerations for the Island. Existing development and known areas with future development potential were considered in the selection of proposed protected areas for the Protected Areas Plan for the Island of Newfoundland. This information was made publicly available during the Phase 1 of the public consultation conducted by the Wilderness and Ecological Reserves Council between May 28, 2019 and October 1, 2020.

# Development Considerations for the Island of Newfoundland (2020) - Map 3

(Roads, Municipal Boundaries, Mineral Claims, Hydroelectric Infrastructure)

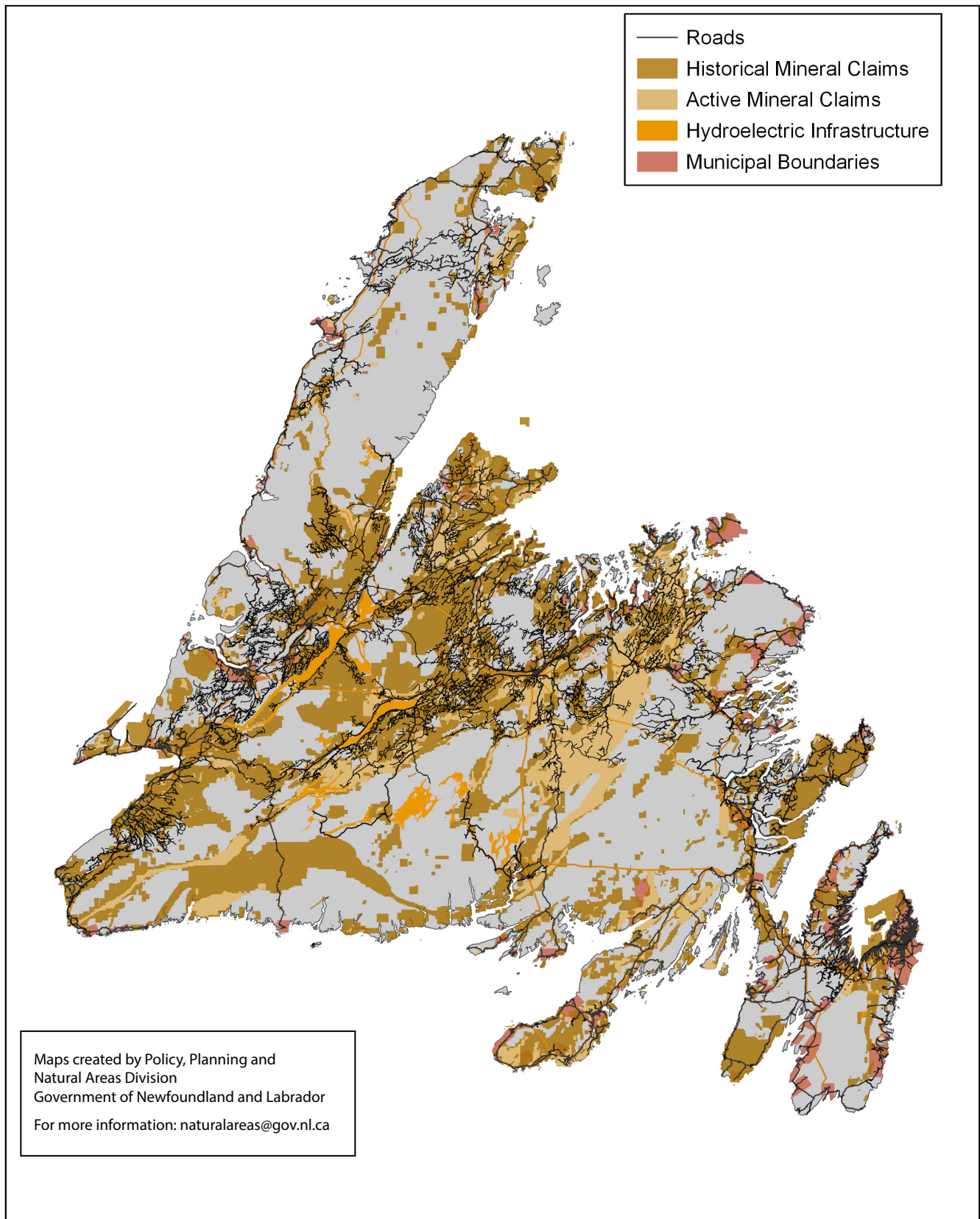


Figure 3: Map 3 of 6 of development considerations for the Island. Existing development and known areas with future development potential were considered in the selection of proposed protected areas for the Protected Areas Plan for the Island of Newfoundland. This information was made publicly available during the Phase 1 of the public consultation conducted by the Wilderness and Ecological Reserves Council between May 28, 2019 and October 1, 2020.



# Development Considerations for the Island of Newfoundland (2020) - Map 4

(Roads, Municipal Boundaries, Mineral Claims, Hydroelectric Infrastructure and Commercial Forestry)

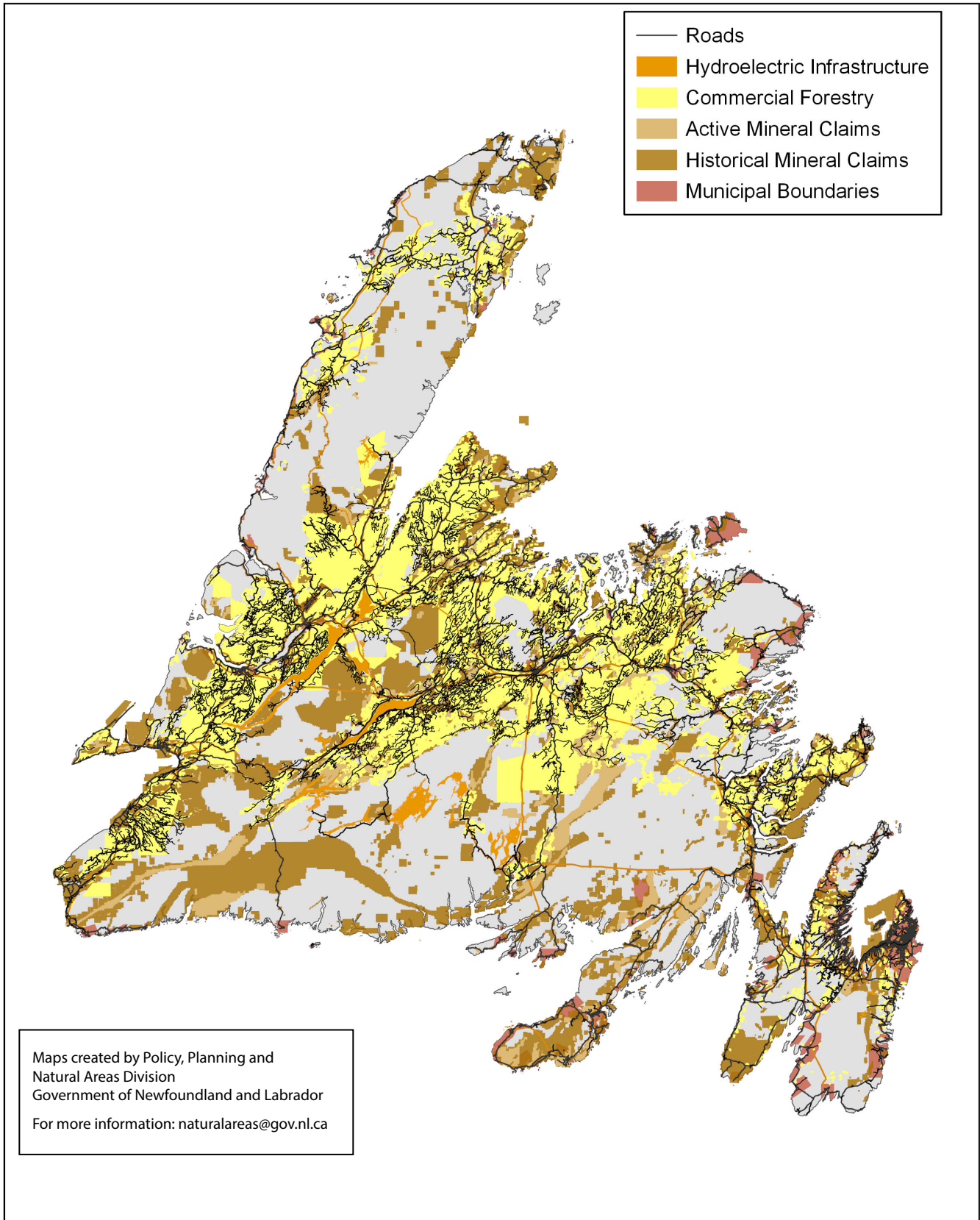


Figure 4: Map 4 of 6 of development considerations for the Island. Existing development and known areas with future development potential were considered in the selection of proposed protected areas for the Protected Areas Plan for the Island of Newfoundland. This information was made publicly available during the Phase 1 of the public consultation conducted by the Wilderness and Ecological Reserves Council between May 28, 2019 and October 1, 2020.

# Development Considerations for the Island of Newfoundland (2020) - Map 5

(Roads, Municipal Boundaries, Mineral Claims, Hydroelectric Infrastructure, Commercial Forestry and Existing and Proposed Protected Areas)

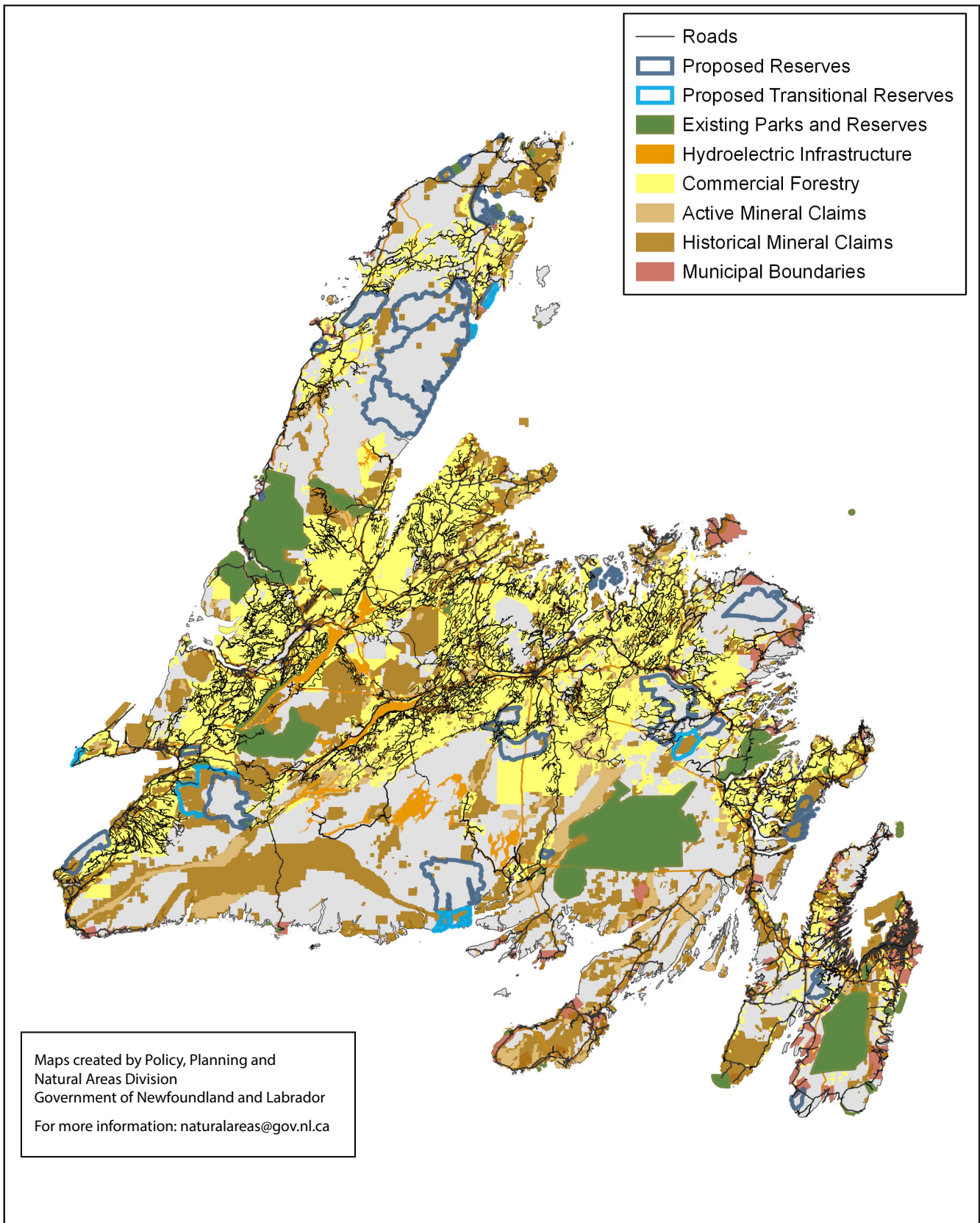


Figure 5: Map 5 of 6 of development considerations for the Island. Existing development and known areas with future development potential were considered in the selection of proposed protected areas for the Protected Areas Plan for the Island of Newfoundland. This information was made publicly available during the Phase 1 of the public consultation conducted by the Wilderness and Ecological Reserves Council between May 28, 2019 and October 1, 2020.



## Development Considerations for the Island of Newfoundland (2020) - Map 6

(Roads, Municipal Boundaries, Mineral Claims, Hydroelectric Infrastructure, Commercial Forestry, Existing and Proposed Protected Areas, and Ecoregions and Subregions)

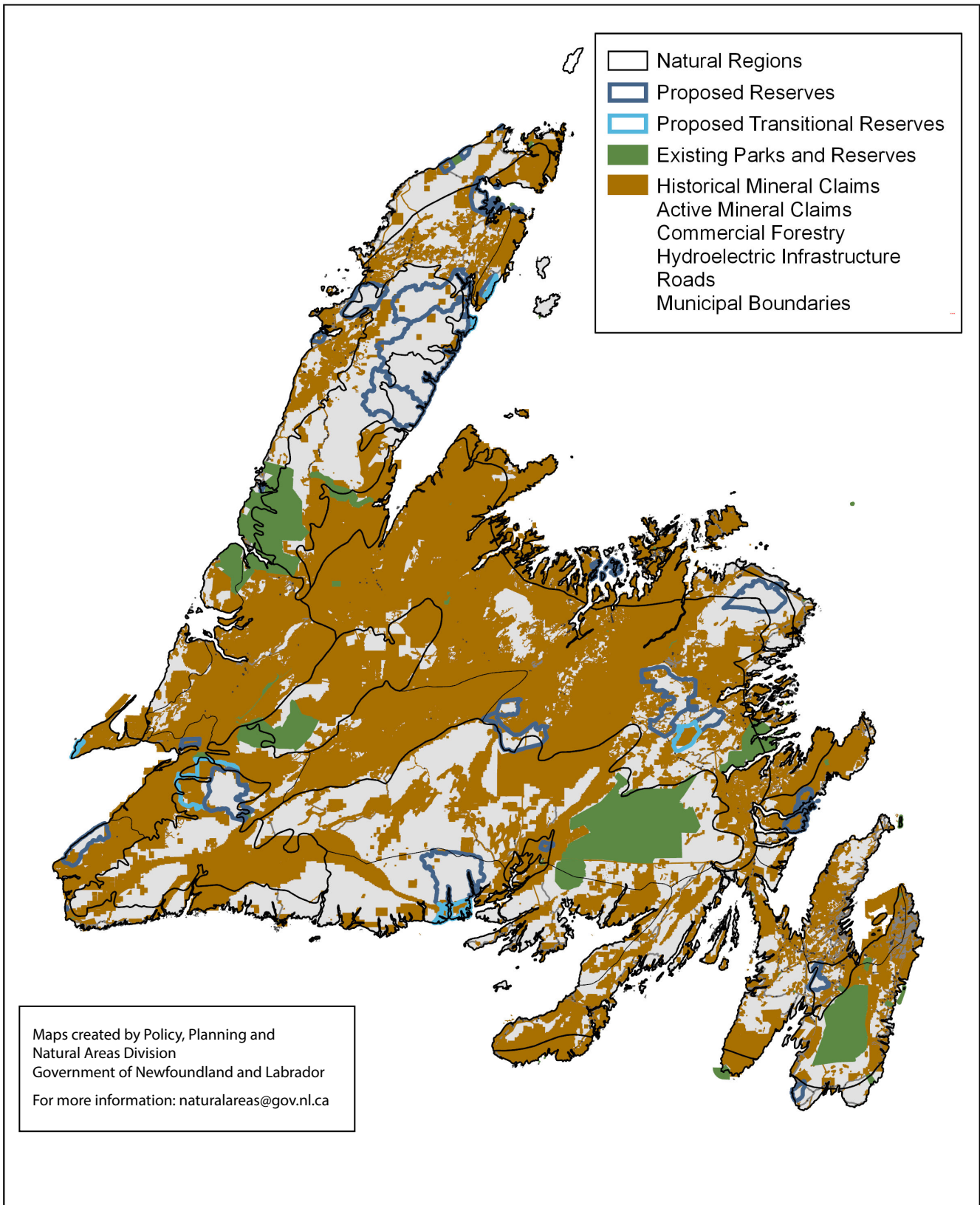


Figure 6: Map 6 of 6 of development considerations for the Island. Existing development and known areas with future development potential were considered in the selection of proposed protected areas for the Protected Areas Plan for the Island of Newfoundland. This information was made publicly available during the Phase 1 of the public consultation conducted by the Wilderness and Ecological Reserves Council between May 28, 2019 and October 1, 2020.