

EXPLORATION DIAMOND DRILLING

**Environmental Assessment Registration
Pursuant to the Newfoundland and Labrador Environmental Protection Act**

Submitted by Labrador Gold Corp.

June 30, 2023

Revised July 12, 2023

2nd Revision July 18, 2023



Table of Contents

1	INTRODUCTION.....	3
1.1	The Proponent	3
1.2	Purpose, Rationale, and Need for the Undertaking.....	3
•	DESCRIPTION OF THE UNDERTAKING.....	4
2.1	Geographic Location	4
2.2	Physical Setting and Human Environment.....	5
2.3	Construction Activities	9
2.4	Operation	13
2.5	Occupation.....	14
2.6	Project Related Documents.....	14
3	APPROVAL OF THE UNDERTAKING	14
4	SCHEDULE	15
5	FUNDING.....	15

LIST OF FIGURES

Figure 1-1	General Location of Kingsway Exploration Activity.....	4
Figure 2-1	Location of Licenses comprising the Kingsway Project.....	5
Figure 2-2	Location of Proposed Drilling Activity within 300 m of the Gander River.....	6
Figure 2-3	Detailed view of proposed drill hole collars and trails in the northern area.....	7
Figure 2-4	Detailed view of proposed drill hole collars and trails in the southern area.....	8
Figure 2-5	Forestry access roads in the vicinity of the Project.....	10
Figure 2-6.	Photogrammetry image of the northern project area showing roads and trails existing at the time of the survey.....	11
Figure 2-7.	Photogrammetry image of the southeastern project area showing roads and trails existing at the time of the survey.....	12

LIST OF TABLES

Table 3-1	List of Environmental Permits and Approvals	15
---------------------------	---	--------------------

APPENDICES

- A Kingsway Property Permits and Approvals
- B Resource Road Maintenance Agreement
- C Kingsway Property Environmental Protection Plan (EPP)

1 INTRODUCTION

Labrador Gold Corp. has obtained Exploration Approval (E210789) for Mineral Licenses 027636M, 023940M and 027837M from the Mineral Lands Division of the Department of Industry, Energy and Technology (DIET). On June 6, 2023 a 6 month Extension To Amendment was granted to that approval. The approved activities include diamond and rotary air blast drilling outside of the 300m buffer zone to the Gander River.

Concurrent with this EA Registration document, a new exploration approval application will be submitted to the Mineral Lands Division, requesting permission to drill within the 300m buffer zone.

Site access to complete the exploration utilize existing logging roads and trails, with only short trails to access drill pads to be constructed. All cut timber will be either stacked or mulched and used for rehabilitation at the drill sites.

As part of the exploration activity, Labrador Gold is proposing to drill within 300 m of the Gander River, a scheduled salmon river. The general location of the Kingsway Property is shown on [Figure 1- 1](#). This document provides technical information regarding the proposed drilling program within 300 m of the river, which is referred to as the Gander River Mineral Exploration Project (the “Project”). The Project will involve exploration drilling at 95 collar locations with associated drill pad clearings (20 x 20 m). Primary access will be from existing trails with short access trails mulched to access the drill pads. The eastern and western boundaries of the drilling area is 100 m from the Gander River, an archeological buffer where no ground disturbing activities are permitted, per the Kingsway Property Exploration Approval ([Appendix A](#)).

1.1 The Proponent

The proponent is Labrador Gold Corp. (“LabGold” or the “the Company”) a publicly traded mineral exploration company that has been exploring for gold in Newfoundland and Labrador since 2017. During that time, the company has spent over \$29 million in exploration expenses in the province, and remains actively exploring its Hopedale project in Labrador and its Kingsway Project on the Island.

Proponent:

Labrador Gold Corp.

82 Richmond Street East

Toronto, ON

M5C 1P1

Dr. Roger Moss

President and CEO

roger.moss@labradorgold.com

1.2 Purpose, Rationale, and Need for the Undertaking

The proposed diamond drilling program on the Kingsway Project (the “Project”) is part of the Company’s ongoing exploration efforts. The purpose of the Project is drilling, geological examination and sampling of core to determine the orientation and size of potential mineral bodies and testing their gold content for economic viability. Continued exploration activities provide a significant economic benefit to the region and, if economically viable mineable deposits

are discovered, there would be further economic benefits from the expansion and potential development of defined deposits.

2 DESCRIPTION OF THE UNDERTAKING

2.1 Geographic Location

The proposed undertaking will involve exploration drilling within 300 m of the Gander River, but outside of the 100m archeological buffer of the river. The drilling for the Project will take place on Lab Gold’s Kingsway property which is located approximately 12km south-southwest of the Town of Glenwood, NL. The general area of the proposed drilling within 300 m is shown on [Figure 2-2](#), with collar locations and access trails shown in more detail on [Figures 2-3](#) and [2-4](#). Access to drill sites will be from existing forestry roads and trails to minimize land disturbance and water crossings. The Project location relative to existing communities and resource roads is shown on [Figure 2-1](#).

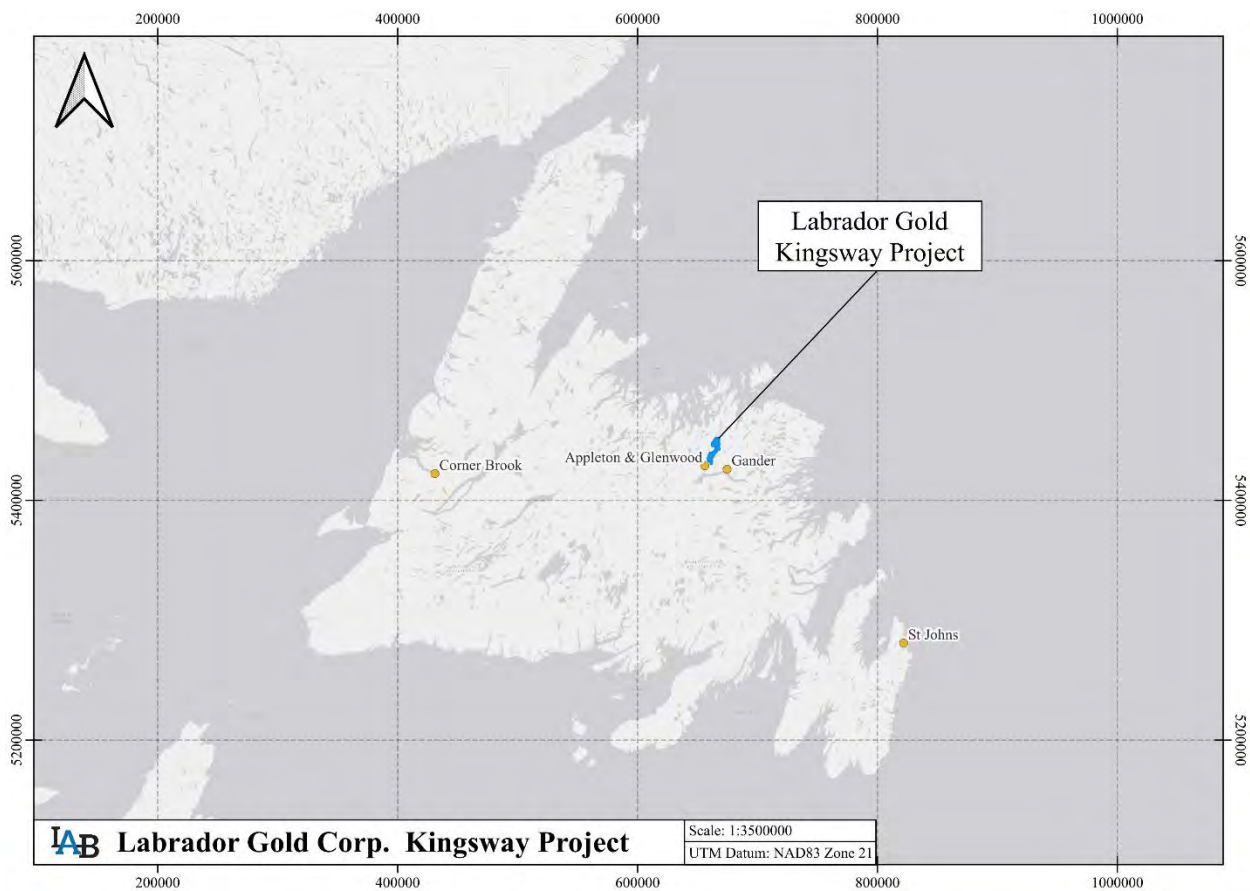


Figure 1-1 General Location of Kingsway Exploration Activity

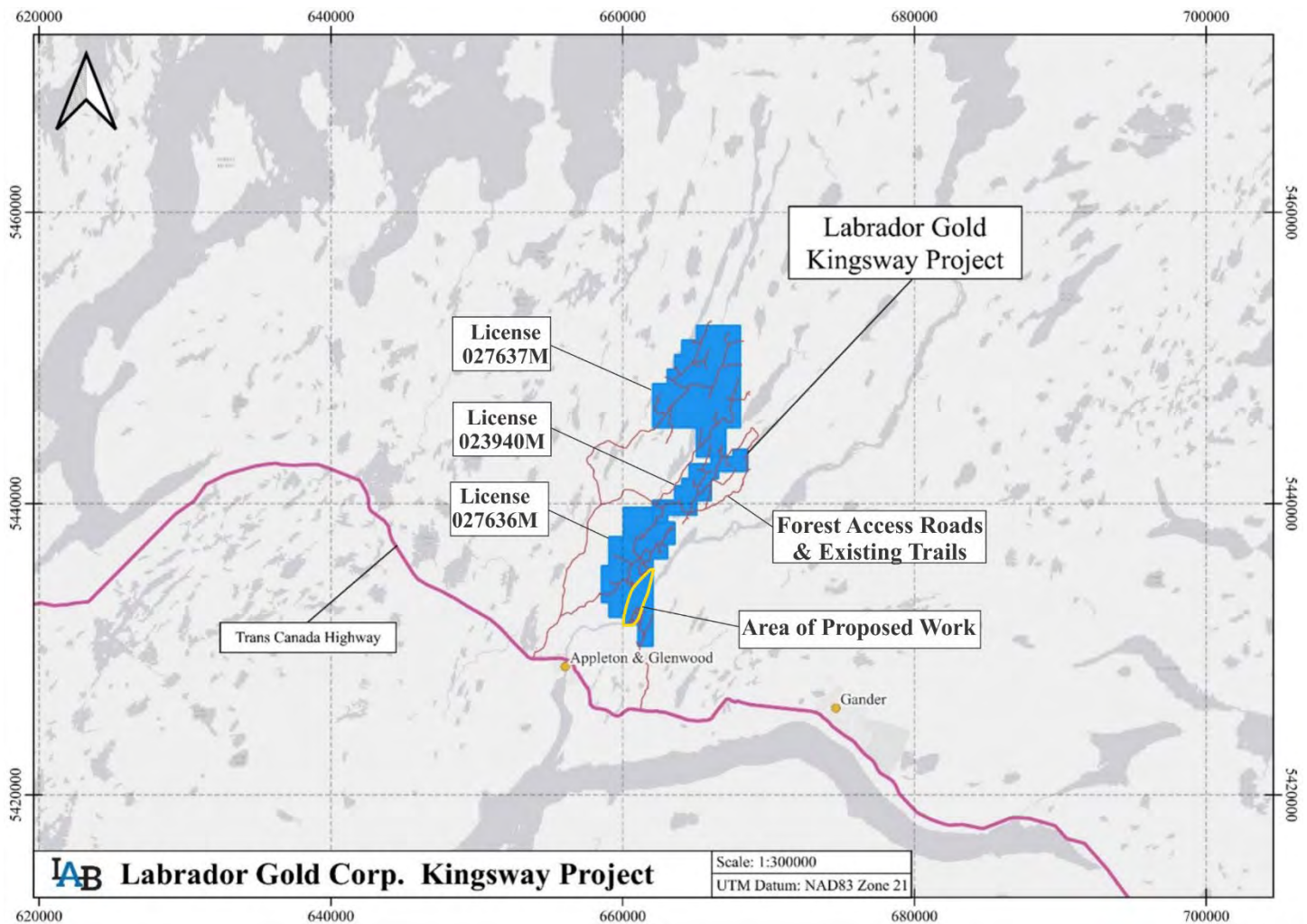


Figure 2-1 Location of licenses comprising the Kingsway Project showing area of proposed work and existing trails.

2.2 Physical Setting and Human Environment

The topography of the Project area is gently sloping towards the river with a typical relief of 5-20 m. The land cover is a mix of forest and wetlands. The Gander River is the predominant surface water body with several streams flowing east and west to the river. Silviculture is common in the region but there has been no recent harvesting within the 300 m buffer to the Gander River. There are many trails, forestry roads, and old access roads in the area with some extending near and/or in the 300 m buffer area.

The climate of the region is maritime-humid continental, with warm summers, cool and wet spring and autumn seasons, and snowy, often windy winters. The daily average temperature in summer months is 16°C and -7°C in winter months. Maximum summer temperature is 35°C and winter minimum -31°C. The annual average precipitation is 1270 mm with higher precipitation typical in fall and winter months. Snowfall begins in late November with snow on ground into April.

The communities of Appleton and Glenwood are located approximately 12 km SSW of the project. Local land use is hunting, fishing, berry picking and logging. There are no known designated environmentally sensitive or cultural heritage sites within the project area.

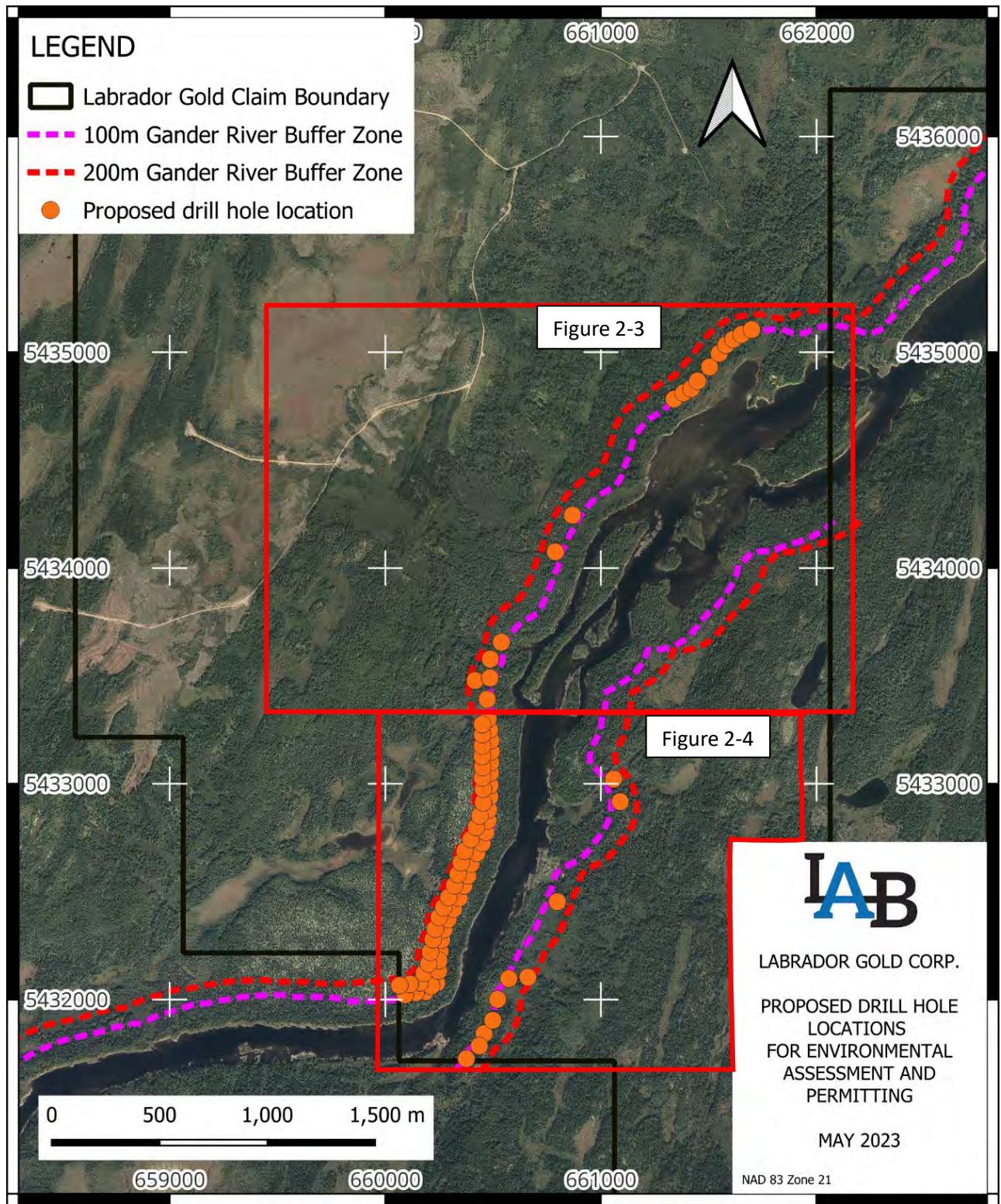


Figure 2-2 Location of Proposed Drilling Activity within 300 m of the Gander River.

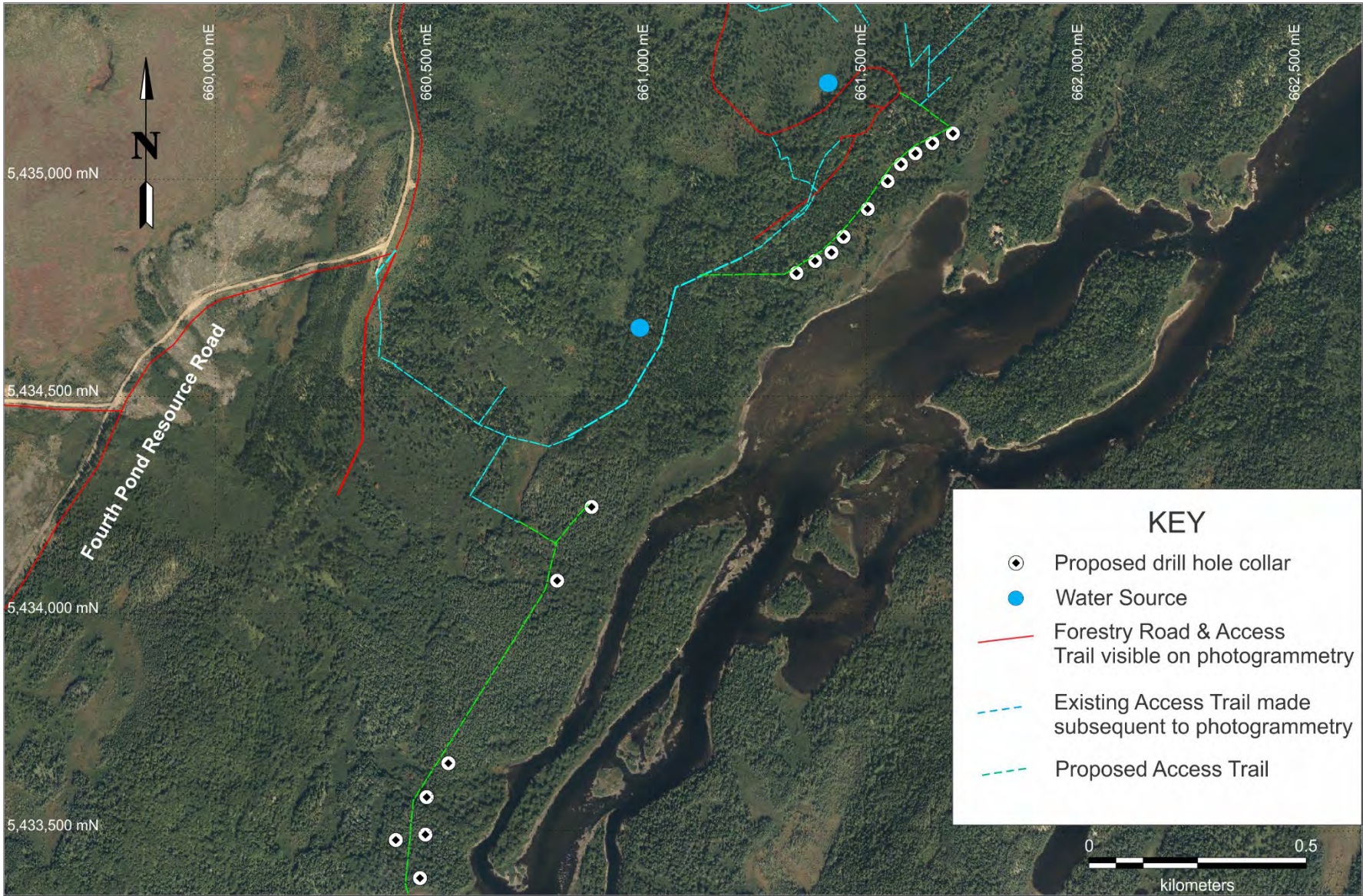


Figure 2-3 Detailed view of proposed drill hole collars, water sources and trails in the northern area.

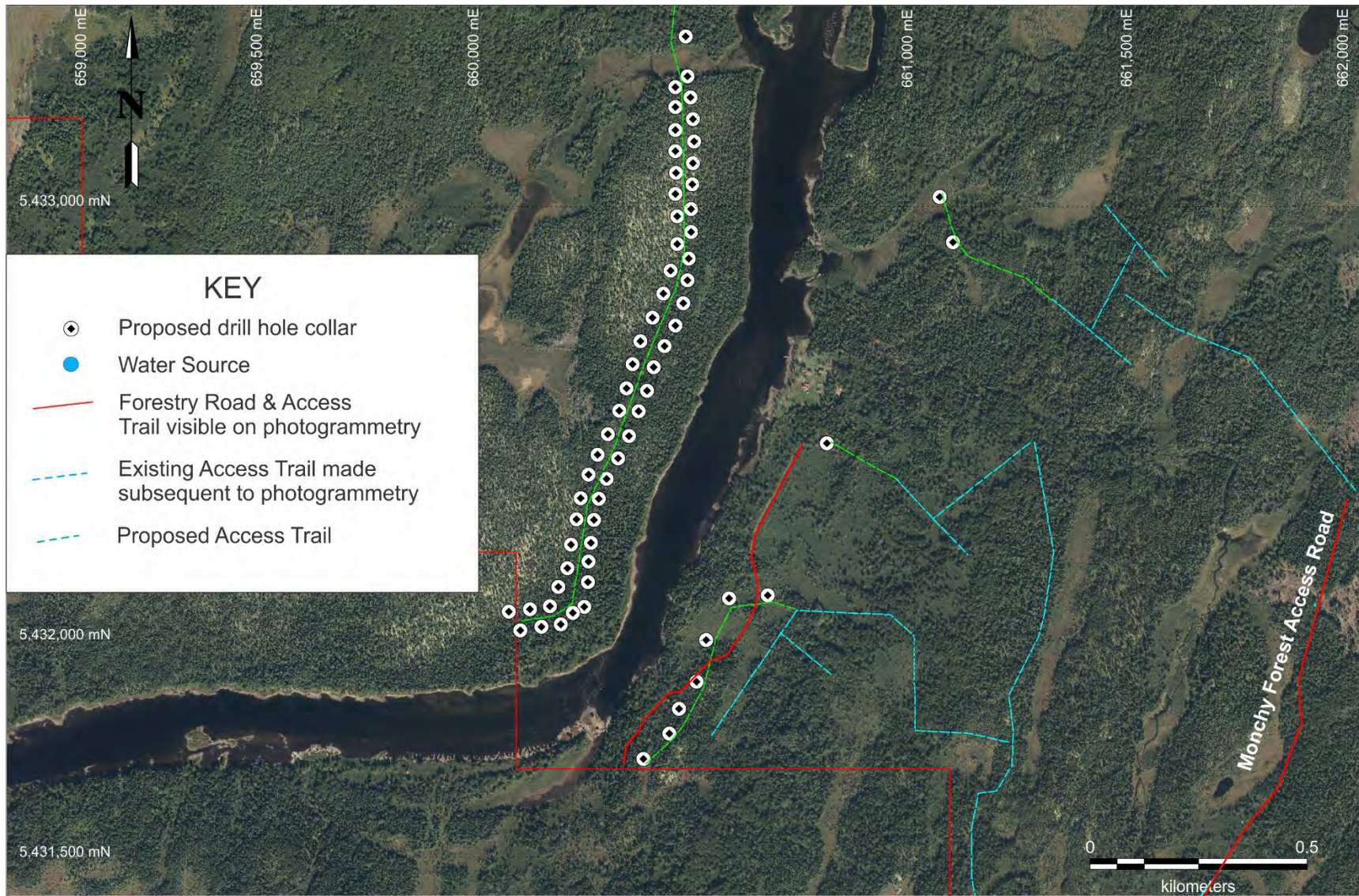


Figure 2-4 Detailed view of proposed drill hole collars, water sources and trails in the southern area.

2.3 Construction Activities

All activity associated with the proposed Project will take place outside of the 100 m archeology buffer of the Gander River and within 300 m of the river. Activity outside of the Project area (outside a 300-metre buffer around salmon pools and a 200-metre buffer from the Gander River) is currently approved through exploration permit (E210789).

Construction activities for the project are the temporary drill pads and trails and no permanent construction is planned. No buildings or permanent infrastructure will be constructed, and no aggregate will be imported.

Construction work for the project area is expected to start in summer 2023 and continue into 2024. The Project will involve the creation of drill pads and short access trails extending from the existing forest access roads and trails. Drill pads are areas cleared of brush and trees with an approximately size of 20 x 20 m to provide safe and open areas for the operation of a diamond core drill. The exact location of the drill pads will be determined during construction in conjunction with ongoing exploration activity throughout the Kingsway property. Approximately 4.4 kilometres of new trails will be required to access the drill pads. The main trails would be accessible by 4x4 truck with access to individual pads being by ATV trails. The trails are not expected to require grading for passage of 4x4 trucks. No work will be undertaken within 100 m of the Gander River.

Access to the project area on the west side of Gander River (Big Vein target) is via the TCH, northwards for approximately 4km along the Salmon Pond Resource Road, northeastwards for approximately 3 km along the Robert's Resource Road then 4.75 km northeast and then south along the Fourth Pond Resource Road ([Figure 2-5](#)). Final access is via approved exploration trails (Exploration Approvals E210014, E210014 Amended, E210015, E210554, E210554 Amended, E210779, E210789, E210789 Amendment, and E210789 Amendment2) constructed in 2021 and 2022 ([Figure 2-6](#)).

In 2022, Labrador Gold entered into an agreement with the Department of Fishing, Forestry and Agriculture allowing the refurbishment and maintenance of the previously abandoned Robert's Resource Road ([Appendix B](#)).

Labrador Gold has maintained (graded) sections of the Salmon Pond, Robert's and Fourth Pond Resource that it uses to access the western portion of the property. Those roads were constructed on subglacial till material which is comprised of compacted clays, silts, sands, cobbles and boulders between 2-20m deep. The access trails constructed by Labrador Gold in 2021 and 2022 overlie areas with thin (approximately 0.5-2m deep) glacial till and exposed bedrock. Maintenance of these trails require occasional dressing and drainage ditch clearing using an excavator (no grading required and trails are too narrow to allow grader access).

The proposed trail to allow access to the southern portion of the east side of the Gander River will be constructed primarily on paleo river sands and gravels deposited during Wisconsin deglaciation (approximately 10,000 years ago). There is comparatively minor clay and silt fractions in that material (i.e. well drained) and therefore maintenance and potential siltation is expected to be minimal.

Access to the property on the east side of Gander River is via the TCH, then northwards along the H Pond Resource Road followed by pre-existing trails constructed by cabin owners ([Figure 2-7](#)). Upkeep of those trails is like that required by the trails constructed by Labrador Gold on the west side of the river (i.e. excavator dressing and no grading).

Site clearing will be conducted with chainsaws followed by leveling with an excavator. Levelling of drill sites is required to provide a solid, safe foundation for the drill rigs. Potential erosion and transport of fine-grained particles during construction will be controlled by using appropriate mitigating measures such as erosion control ditches, hay bales, silt fencing, and berms.

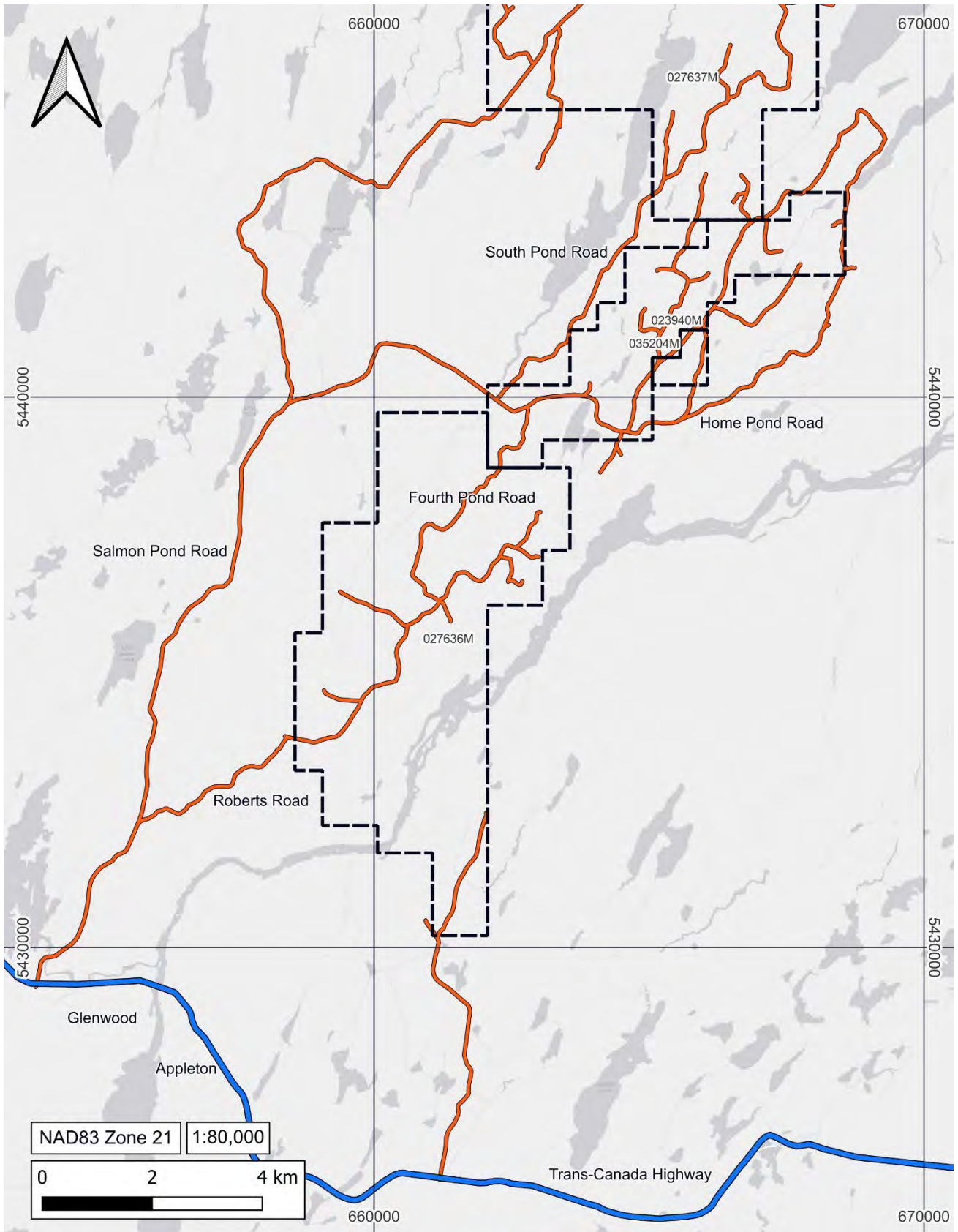


Figure 2-5 Forestry access roads in the vicinity of the Project.

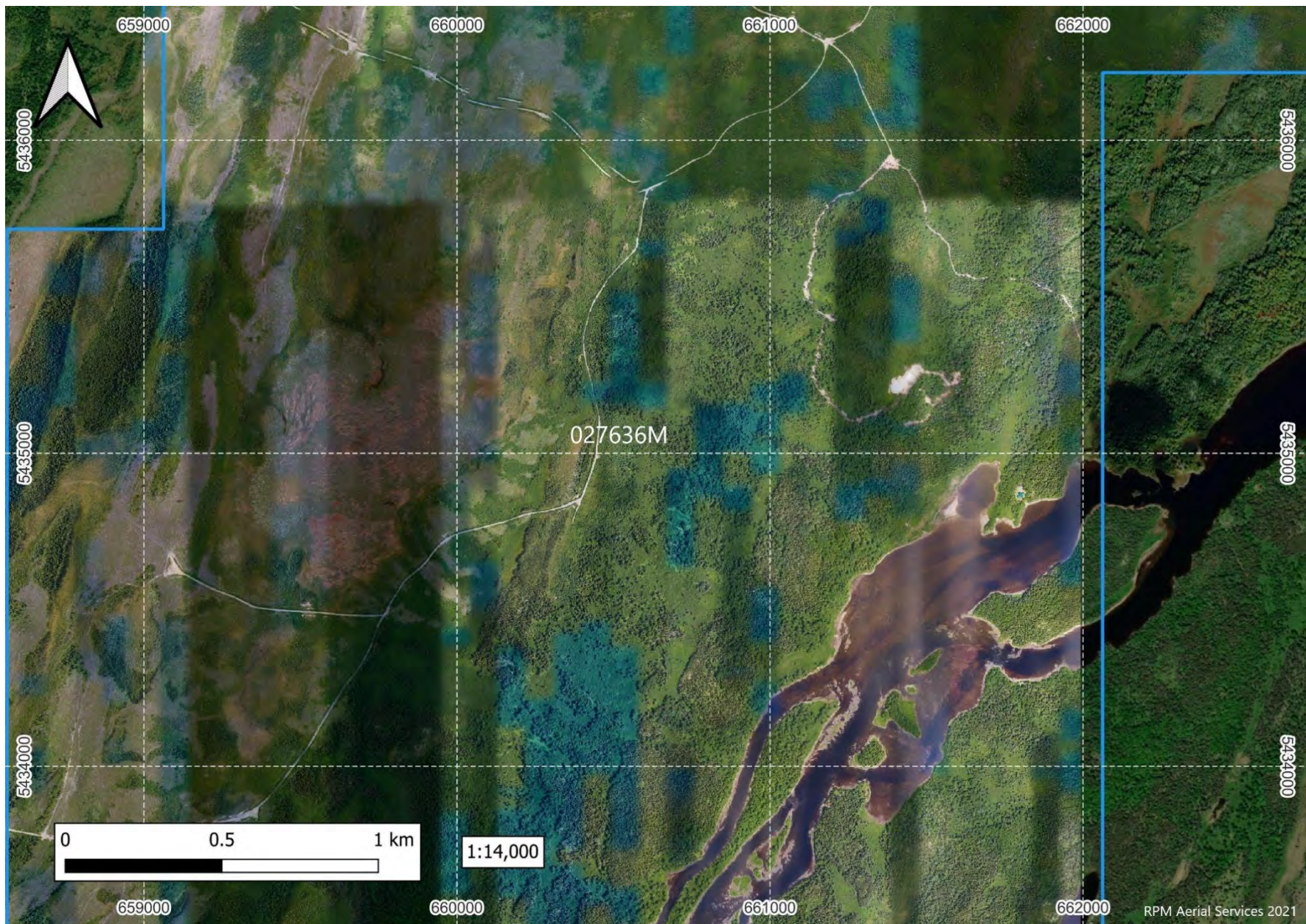


Figure 2-6. Photogrammetry image of the northern project area showing roads and trails existing at the time of the survey.

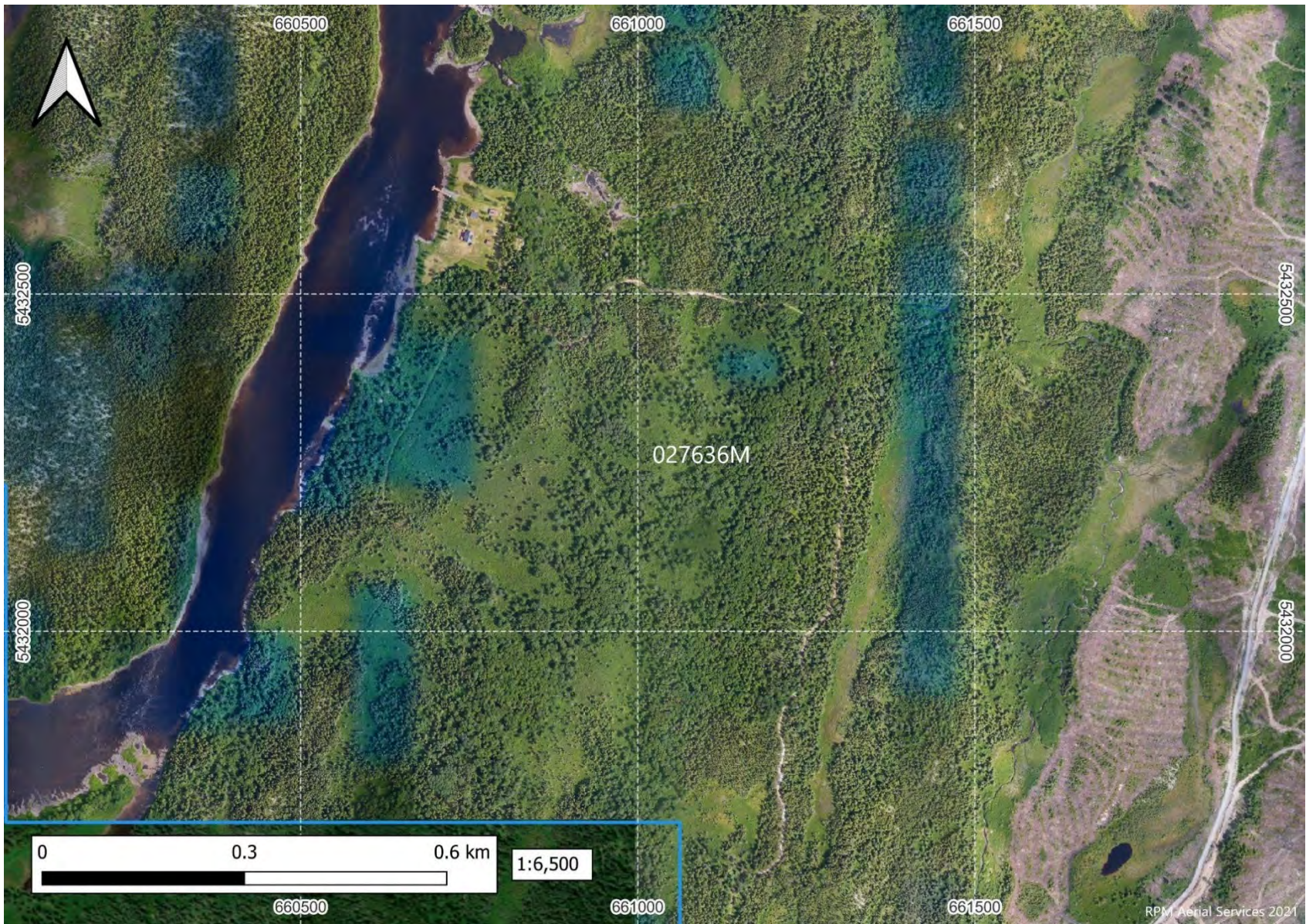


Figure 2-7. Photogrammetry image of the southeastern project area showing roads and trails existing at the time of the survey.

Sources of pollutants during the construction process include air emissions from mobile heavy equipment (e.g. excavator), drilling fluids, and the potential for petroleum spills (diesel fuel, hydraulic oil, grease, and/or gasoline). Air pollution will be controlled by having all equipment be properly maintained and equipped with the appropriate emission control devices. Noise levels associated with the work are not expected to reach nuisance levels as the nearest residential areas are several kilometres from the project.

There will be no solid waste material generated except for domestic waste, which will be collected, transported off site, and disposed of at an approved facility. Washroom facilities will be self contained portable toilets and be handled and maintained by a licensed service provider.

Fuel for construction equipment will not be stored at the project area and will be brought in as required using double walled Tidy Tanks in vehicles or portable fuel containers. All portable containers will be stored on secondary containment trays. The handling of petroleum products will comply with the Storage and Handling of Gasoline and Associated Products Regulations. Spill kits will be available on site for containment and cleanup of any hydrocarbon leaks or spills. The kits will be inspected regularly, and any used material will be replaced as soon as possible. An emergency spill response plan is part of Labrador Gold's Environmental Protection Plan (EPP), which is provided in [Appendix C](#).

2.4 Operation

Operation activities will include the use of a diamond drill rig at each of the drill pad locations. Drilling at each pad typically ranges from 2 to 10 days. Drill access trails will be temporary linear trails cleared of brush and trees to a width of approximately 5 metres to allow passage of equipment. Excavating and ditching are not expected to be required and the drill access trails will typically be operated from 2-8 weeks. Reclamation activities would be progressive and commence as soon as the drill pad and trails are no longer needed.

The drills will be moved to new pad locations using a skidder or excavator. Water is used in the drilling process to remove drill cuttings from the drill hole. A small water pump is used to pump water from a source (freshwater and/or recycled water) to the diamond drill. As far as possible, recirculated water is used during drilling.

Diamond drilling retrieves drill cores of approximately 6 cm in diameter and samples are removed from the drill pipe and placed into wooden boxes for transport and storage. The average depth of holes is expected to be approximately 250 metres. Drill cores are removed from the site daily and transported to the company's drill core logging location at 41 Spruce Avenue, Glenwood. Geologists and technicians process and sample the drill cores for geological information, gold content and other analyses. Pickup trucks and all terrain vehicles are employed for the transportation of drill core and personnel to and from the drill sites.

Sources of pollutants during operations include air emissions from drill rigs and from mobile heavy equipment, drilling fluids and drill effluent, and the potential for petroleum spills (diesel fuel, hydraulic oil, grease, and/or gasoline). Air pollution will be controlled by having all equipment be properly maintained and equipped with the appropriate emission control devices. Noise levels associated with the work are not expected to reach nuisance levels as the nearest residential areas are several kilometres from the project.

The liquid effluent from the drill (water with fine rock flour) will be contained and prevented from entering any water bodies using temporary containment sumps. The sumps will be lined with a geotextile fabric to contain drill cuttings and once water is filtered through the geotextile, the fabric will be removed from the sump and disposed of at a licensed waste facility.

Fuel for operations activities will not be stored at the project area and will be brought in as required using double walled Tidy Tanks in vehicles or portable fuel containers. All portable containers will be stored on secondary containment trays. The handling of petroleum products will comply with the Storage and Handling of Gasoline and Associated Products Regulations. Spill kits will be available on site for containment and cleanup of any hydrocarbon leaks or spills. The kits will be inspected regularly, and any used material will be replaced as soon as possible. An emergency spill response plan is part of LabGold's Environmental Protection Plan (EPP), which is provided in [Appendix C](#).

Potential resource conflicts are not expected given the small area of the project and limited access but could include recreational uses such as firewood cutting, hunting, fishing, forestry, and nearby exploration activity.

Reclamation of drill pads and trails will occur concurrently during construction and operation activities and will include:

- The redistribution of vegetation or other organic materials around the site;
- Removal of all drill cutting from sumps for disposal at an approved waste disposal site;
- Re-grading of any disturbance from tracked vehicle;
- Seeding of cleared areas; and
- The use of hay to prevent erosion of unconsolidated soil.

Inspections and assessment of construction, operation, and reclamation activities will be conducted in-house.

Operation activities are expected to be completed by early 2024 with exact dates and work plans being contingent on results of ongoing drill activities.

2.5 Occupation

The estimated number of employees required for the construction and operation of the project, as well as the expected duration of employment are as follows:

- Full-time geologists (8) employed by LabGold for the duration of the project (NOC Classification 21102)
- Full time technicians (4) employed by LabGold for the duration of the project (NOC Classification 22101)
- Drilling crew (14) hired on contract by LabGold for the duration of the project (NOC Classification 73402)

LabGold is an equal opportunity employer and seeks to maintain diversity in its workforce including the hiring of women, men, transgender, minorities and First Nations people. Currently the LabGold staff includes four women, eight men, one woman of colour and one indigenous person with eight of the twelve staff residents of Newfoundland and Labrador. The average age of LabGold staff is 32 (9 between 20 and 30, 1 between 31 and 40, 1 between 50 and 59 and 1 over 60 years old).

2.6 Project Related Documents

Labrador Gold's Environmental Protection Plan (EPP) is provided in [Appendix C](#).

3 A copy of the Draft Environmental Guidelines for Mineral and Quarry Materials Exploration is provided in [Appendix D](#).

APPROVAL OF THE UNDERTAKING

Environmental permits and approvals required for the undertaking, together with the names of the authorities responsible for issuing them are provided in [Table 3-1](#). The permits are provided in [Appendix A](#).

Table 3-1 List of Key Environmental Permits and Approvals

Approval Required	Legislation Regulation	Project Component / Activity Requiring Approval or Compliance	Department or Agency	Requirements
Government of Newfoundland and Labrador				
Exploration Approval	Mineral Act Subsection 5(4)	Diamond Drilling Drill trail construction	Government of Newfoundland and Labrador. Department of Industry, Energy and Technology (IET)	As per attached permits
Development Permit	Protected Road Zoning Regulations	Mineral Exploration	Digital Government and Service NL	As per attached permits
Cutting Permit	Forestry Act	Tree cutting		As per attached permits
Operating Permit	Forestry Act	Forest Fire Prevention	Forestry Branch of the Department of Fisheries, Forestry and Agriculture (FFA) Newfoundland and Labrador	As per attached permits

4 SCHEDULE

Labrador Gold commenced exploration at Kingsway in July 2020 and has been active consistently since. Diamond drilling outside of the buffer zone commenced in April 2021. Drilling within the buffer is expected to start upon release from Environmental Assessment and, contingent upon results, continue through 2024.

5 FUNDING

Funding for the proposed project and associated permitting requirements will be provided directly by LabGold Corp. and is included in the 2023 budget approved by the Board of Directors at \$10,000,000.

Appendix A

Kingsway Property
Permits and Approvals



June 6, 2023

E210789 (EXTENSION)

Roger Moss Labrador Gold Corp.
82 Richmond Street East,
Toronto, ON
M5C 1P1

Dear Mr. Moss:

Government of Newfoundland and Labrador

Department of Industry, Energy and Technology Mineral Lands Division

EXTENSION TO AMENDMENT

**Exploration Approval
(73 DDH, 38 RAB Holes, Fuel Storage) for Labrador Gold on the
Kingsway Property; NTS: 02E/02;
Licences: 027636M, 023940M, 027837M**

Your proposed exploration program submitted in compliance with Section 5(4) of the **Mineral Act** has been reviewed and approved.

Note that the following conditions, which are categorized based on the scope and location of exploration work, apply:

General Conditions

1. The Proponent, its employees, agents and subcontractors ("Proponent") shall comply with the Mineral Regulations, in particular sections 41 – 45. The Mineral Regulations can be read at: <http://assembly.nl.ca/legislation/sr/regulations/rc961143.htm>
2. This approval may be cancelled or suspended by the Minister if the Proponent fails to comply with any condition in this approval or as a result of a failure to comply with the Mineral Act, Mineral Regulations or any other provincial

law or regulation. Upon cancellation or suspension of this approval the Proponent shall immediately cease all exploration activities.

3. The Proponent shall comply with any other Provincial and Federal act or regulation, and obtain all

Natural Resources Building, 50 Elizabeth Avenue, P.O. Box 8700, St. John's, NL, Canada, A1B 4J6,
6782

permits that may be required in connection with the exploration activity.

4. As required by Section 42 of the Mineral Regulations, the Proponent shall notify the Mineral Lands Division of any significant changes to the approved exploration plan, and shall not proceed with exploration work, preparatory work or site access that deviates substantially from the approved exploration plan or deviates from the approved exploration plan in a manner which may significantly impact the environment without first receiving written authorization from the Mineral Lands Division.
5. The Proponent shall provide the Mineral Lands Division with:
 - A brief notice immediately before beginning the work;
 - A brief update of the status of the exploration program when it is completed.
 - Notices and updates should be sent to exploration_approval@gov.nl.ca
6. At any time the Mineral Lands Division may issue a request for information regarding completed, ongoing or planned exploration and the Proponent agrees to abide by all such requests without undue delay. The information requested may include but is not limited to: the location of exploration sites (including access trails), site preparation methods, the status of rehabilitation and cleanup, and photographic documentation of site conditions.
7. If exploration work is to take place on lands not vested in the Crown, as per section 12(2) of the **Mineral Act**, the licensee shall obtain prior written permission and forward copies to the Mineral Lands Division. Information regarding private land may be found on Crown Lands' Land Use Atlas: <https://www.gov.nl.ca/landuseatlas/details/>
8. Exploration work, including traditional prospecting, shall not be carried out on ground for which the mineral rights are held by another party unless permitted by an agreement registered with the Mineral Claims Recorder's office or unless written permission from the other party has been forwarded to the Mineral Lands Division. The Department's Geoscience Atlas is a current map of mineral rights held in the province. The Geoscience Atlas is located at: <http://gis.geosurv.gov.nl.ca/>
9. The Proponent shall ensure that all waste materials are placed in suitable refuse containers without undue delay and removed to a waste disposal site approved by Service NL to accept the type(s) of waste being disposed of. Digital Government and Service NL Government Service Centres are listed at: <https://www.gov.nl.ca/dgsnl/department/contact/#locations>
10. The modernized **Fisheries Act** (2019) includes fish and fish habitat protection provisions which came into effect on August 28, 2019. If you are conducting work in or near water you should refer to the Projects Near Water website (<http://www.dfo-mpo.gc.ca/pnw-ppe/index-eng.html>) to get information about how to comply with the **Fisheries Act** and as well as information on the project review process.

You are responsible for:

- understanding the impacts your project will likely have on fish and fish habitat;
- taking measures to avoid and mitigate impacts to fish and fish habitat;
- requesting an authorization from the Minister and abiding by the conditions of your authorization when it is not possible to avoid and mitigate project impacts on fish and fish habitat;
- ensuring compliance with all statutory instruments, including federal, provincial, or municipal legislations/requirements.

In cases where impacts to fish and fish habitat cannot be avoided, and the project does not fall within waterbodies where a Fish and Fish Habitat Protection Program (FFHPP) review isn't required or the scope of the project is not covered under standards and codes of practice (<https://www.dfompo.gc.ca/pnw-ppe/practice-pratique-eng.html>), you are asked to submit a **Request for Review** (<https://www.dfo-mpo.gc.ca/pnw-ppe/reviews-revues/request-review-demande-dexamen-004-eng.html>) to the NL Region-FFHPP at FPP-NL@dfo-mpo.gc.ca. If you have any questions please call (709) 772-4140.

11. As per Section 38 (5) of the **Fisheries Act**, every person has a duty to notify DFO of an occurrence that results in serious harm to fish, or the deposit of a deleterious substance in water frequented by fish. Should such an occurrence take place, the Proponent shall contact DFO at 709-772-4140 or FPP-NL@dfo-mpo.gc.ca.

Diamond Drilling & Use of Water Pumps

12. The Proponent is advised of Section 45(2) of the **Mineral Regulations** which requires that all sites cleared of topsoil (e.g. drill pads prepared by cut-and-fill, grubbed sections of access trail, laydown area) be rehabilitated before the end of the current exploration program. Rehabilitation as per Section 45(2) requires that the site be re-contoured and the original organic cover (topsoil, ground vegetation, and any trees not used for other purposes) be spread back over the re-contoured site. If the original organic cover proves insufficient to completely re-cover the site then an organic substitute material must be used in addition to complete the process, provided that no invasive species are introduced. Acceptable substitute materials are straw, hay, trees having been cut in other parts of the exploration project area, or ground vegetation produced by hydroseeding. If the Proponent wishes to keep drill casing above ground then the re-contouring may accommodate this. Sumps pits and borrow pits fall under Section 45(1)(a) of the **Mineral Regulations** and need to be rehabilitated before the end of the exploration season in which they are excavated.
13. The Proponent shall not permit drilling discharge waters to flow overland into a water body, including into a small stream or intermittent channel, irrespective of whether the water body is displayed on the 1:50,000 scale NTS map. More specifically, waterborne drill cuttings and drill additives shall not be permitted to enter a water body.
14. All water pumps shall be underlain by a drip tray lined with absorbent pads and the pads shall be changed before becoming saturated. Drip trays where the containment rim is broken must be replaced or placed in secondary containment (e.g. a tarp-lined wooden tray) without delay.
15. Drill casings producing water in any quantity shall be sealed (grouted) before the expiry of the exploration approval and capped in the meantime. The drill holes shall be sealed with high-swelling bentonite or cement; however coarse sand may be used to fill the lower portions of the hole. Capping is not a substitute for sealing, since many caps cannot fully stop the water and, in any case, the caps will inevitably break due to freezing and thawing.

16. Immediately after demobilization from a drill site, the site shall be inspected for spills of hydraulic oil or fuel, deposits of drill grease, garbage, and waste equipment and these shall be cleaned up in their entirety without delay. The Proponent shall excavate deep enough to retrieve all of the contaminated soil. Soil contaminated by hydraulic oil or fuel shall be excavated and disposed of at an approved waste disposal site. The Proponent shall contact the nearest Government Service Centre to find out the location of the nearest approved waste disposal site accepting the materials that have been cleaned up. Government Service Centres are listed at: <https://www.gov.nl.ca/dgsnl/department/contact/#locations>
17. The Proponent shall screen any water intakes or outlet pipes to prevent entrainment or impingement of fish. Entrainment occurs when a fish is drawn into a water intake and cannot escape. Impingement occurs when an entrapped fish is held in contact with the intake screen and is unable to free itself.
18. In freshwater, the Proponent shall follow these measures for design and installation of intake end of pipe fish screens to protect fish where water is extracted from fish-bearing waters:
 - a. Screens should be located in areas and depths of water with low concentrations of fish throughout the year.
 - b. Screens should be located away from natural or artificial structures that may attract fish that are migrating, spawning, or in rearing habitat.
 - c. The screen face should be oriented in the same direction as the flow.
 - d. Ensure openings in the guides and seals are less than the opening criteria to make “fish tight”.
 - e. Screens should be located a minimum of 300 mm (12 in.) above the bottom of the watercourse to prevent entrainment of sediment and aquatic organisms associated with the bottom area.
 - f. Structural support should be provided to the screen panels to prevent sagging and collapse of the screen.
 - g. Large cylindrical and box-type screens should have a manifold installed in them to ensure even water velocity distribution across the screen surface. The ends of the structure should be made out of solid materials and the end of the manifold capped.
 - h. Ensure regular maintenance of screens is carried out to prevent impingement of fish.
 - i. Pumps should be shut down when fish screens are removed for inspection and cleaning. If this is not possible, a secondary intake should be available.
19. The Proponent is advised that exploration sites (including drill sites, trenches, test pits, and sections of access trail) associated with ground disturbance and located close to open water bodies or watercourses fall under Section 45(1)(b) of the **Mineral Regulations** as a site that could cause sedimentation into a nearby water body. The Proponent is required to actively ensure that any sedimentation generated from the site does not enter the water body or watercourse. Some combination of erosion prevention and sedimentation control shall be used to meet this requirement.

Mineral Exploration Access Trails

20. In general, “Exploration access trail” means a temporary, low-impact route for which preparation and maintenance activities in support of using the route for exploration purposes is limited to one or more of the following:
 - a. Clearing trees.
 - b. Laying down corduroy or brush-matting to prevent disturbance of wet or soft areas.
 - c. Vehicle use to the extent that the natural ground cover is disturbed and a conspicuous path of travel established.
 - d. Minimal amounts of local in-filling (“minimal” meaning only at specific locations where it can be demonstrated that it would have been unsafe or impractical for an all-terrain vehicle to drive over the original topography).

- e. Minimal amounts of local grubbing (“minimal” meaning only at specific locations where it can be demonstrated that it would have been unsafe or impractical for an all-terrain vehicle to drive over the vegetation).
21. The visible presence of a vegetation covered linear feature on the landscape does not mean the feature was once a road, or that the feature is available for upgrading without application. Forest access roads may be in various condition, depending upon the period since last used commercially, construction methods used, and specific site conditions. Culverts, bridges and ditching may also be in various states or completely absent. Roads may be considered completely regressed and no longer considered for upgrade without an application in cases where the route is overgrown and not possible by ATV or snowmobile.
 22. Forest extraction trails often appear as linear features on imagery. These extraction trails are not roads and the root mat was not intended to be disturbed on these. These are considered trails and will require application for Crown Land title for use as a road.
 23. If new road construction is required, the proponent must complete an application for Crown land and it must be approved prior to road construction. The application, and related information can be found at: <https://www.gov.nl.ca/ffa/lands/applications/>

Use and Storage of Petroleum Products

24. Fuel storage is approved on the basis that **less than 5 drums** of fuel are to be stored on site. Should more than 5 drums of fuel be required to be stored, the Proponent shall obtain a Fuel Cache Approval prior to the start of the exploration program. Fuel Cache Approvals may be obtained from the local Environmental Protection Officer, Digital Government and Service NL. The Proponent shall abide by the **Storage and Handling of Gasoline and Associated Products Regulations, 2003** which can be found here: <http://www.assembly.nl.ca/legislation/sr/regulations/rc030058.htm>.
25. All fuel storage containers (e.g., jerry cans, fuel drums, etc.) and water pumps shall be underlain by effective secondary containment (e.g., a drip tray) lined with absorbent pads. Absorbent pads shall be changed before becoming saturated. Secondary containment where the containment rim is broken or otherwise ineffective must be replaced or placed within additional containment (e.g., a tarp-lined wooden tray) without delay.
26. Petroleum product spills into or near a water body and petroleum product spills greater than 70 litres (or of an uncertain volume) on land must be reported without delay to Service NL by calling the Environmental Emergency 24-hour line at 772-2083 or 1-800-563-9089. In order to ensure that a quick and effective response to a spill event is possible, spill response equipment and absorbent materials should be readily available on-site.
27. The Proponent shall wash, refuel and service machinery and store fuel and other materials for the machinery in such a way as to prevent any deleterious substances from entering the water. Water depths should not submerge axle or differential vents.

Environmental Assessment

28. This exploration program was reviewed by the Environmental Assessment Division and it was determined that registration is NOT required under Section 47 of the **Environmental Protection Act**.

29. Please be aware that Environmental Assessment Division must be notified of any significant changes to the undertaking. All proponents are required to comply with all relevant legislation including permits and approvals from Environmental Assessment Division and any other municipal, provincial or federal regulatory authorities.

Agriculture

30. The area of the property boundary partially overlaps an Agriculture Area of Interest (AOI) (Refer to map in original amendment). In general, the LMD does not have concern with the proposed activities at this time.

Forestry

31. The proposed exploration area overlaps with silvicultural treated areas. The proponent is advised to contact the local Forest Management District Office in Lewisporte to discuss the proposed work with the goal of determining an acceptable mitigation, rehabilitation, or compensation plan that would minimize the impact on silviculture resources.
32. The Proponent shall comply with the **Forestry Act** and regulations. The Proponent is advised to contact the nearest Forest Management District Office to obtain the following permits as required:
- a commercial harvesting permit before the start of the exploration program if trees have to be cut for access to exploration sites. Please note that it may take up to two weeks to receive this permit;
 - an operating permit if operations are to take place on forest land during the forest fire season (May-September);
 - During the Forest Fire Season a permit to burn must be obtained to ignite a fire on or within 300 meters of forest land.

Regional and Satellite Forestry contact information can be found at:

http://www.flr.gov.nl.ca/department/contact_forestry.html#regional

Forestry Management Districts and zone boundaries are shown on the Fisheries, Forestry and Agriculture (FFA) GeoHub: <https://geohub-gnl.hub.arcgis.com/app/forestry-management-districts-and-zones-ofnewfoundland-and-labrador>

Gander River Protected Area

33. Subject site is located in the **Gander River Protected Area** and is subject to the **Gander River Protected Area Plan and Development Regulations**. According to section 7 of the mineral exploration and extraction activities may be permitted provided that they do not reduce the quality of water in any waterbody or watercourse. A 300 metre buffer around salmon pools must be respected and a 30 metre buffer from the Gander River.

A permit from Government Service Centre, Department of Digital Government and Service NL is required before any work commences.

Water Resources

Development Adjacent to or Within Protected Public Water Supply Area

34. Prior to issuance of title, the proponent must apply for and obtain a permit under the Water Resources Act, 2002, specifically Section 39. The proposed development is adjacent to or within the Dog Bay Pond Brook Protected Public Water Supply Area servicing the Community of Stoneville. Work adjacent to or within this designated Protected Public Water Supply Area must comply with this Department's Policy for Land and Water Related Developments in Protected Public Water Supply Areas <https://www.gov.nl.ca/eccm/waterres/regulations/policies/water-related/>.

35. The proponent must apply for and obtain a permit under the **Water Resources Act, 2002**, specifically Section 48 <http://assembly.nl.ca/Legislation/sr/statutes/w04-01.htm> for any work (including fording) in or within 15m any body of water (including wetland) prior to the start of construction.

36. The application is available under Surface Water at:
<https://www.gov.nl.ca/eccm/waterres/regulations/appforms/>

Contact: Manager, Drinking Water; Wastewater Section - (709) 729-4048

Crown Lands & Land Management

37. There are a number of issued Crown titles and active applications for Crown land within this area. If work is to take place within these issued title sites, permission from the land owner is required.

38. There may be private land located within this area which may not be on record with the Crown Lands Office. If work is planned on these private land sites, permission is required from the land owners.

39. Approximate locations of Crown Land titles can be viewed on the Public Land Inquiry map viewer here:
<https://www.gov.nl.ca/landuseatlas/inquiry/>

40. If new road construction is required, the proponent must complete an application for Crown land and it must be approved prior to road construction. The application, and related information can be found at:
<https://www.gov.nl.ca/ffa/lands/applications/>

Provincial Archaeology Office

41. Please be advised on the provisions of the **Historic Resources Act**, protecting archaeological sites, artifacts and significant fossils, and procedures to be followed in the event that either are found:

- a) A person who discovers an archaeological object or significant fossil in, on or forming part of the land within the province shall report the discovery forthwith to the Minister (responsible for the **Historic Resources Act**) stating the nature of the object, the location where it was discovered and the date of discovery;
- b) No person other than one to whom a permit has been issued under this Act, who discovers an archaeological object or significant fossil shall move, destroy, damage, deface, obliterate, alter, add to, mark or in any other way interfere with, remove or cause to be removed from the province that object or fossil;
- c) The property in all archaeological objects or significant fossils found in, on or taken from the land within the province, whether or not these objects or fossils are in possession of the Crown is vested in the Crown;

Should any archaeological remains be encountered, such as stone, bone or iron tools, concentrations of bone, charcoal or burned rock, fireplaces, house pits and/or foundations, activity in the area of the find must cease immediately and contact should be made with the Provincial Archaeologist in St. John's (709-729-2462) as soon as possible.

Copies of the **Historic Resources Act** and information on archaeology in the province may be obtained from the Provincial Archaeology Office upon request.

Wildlife

42. The Wildlife Division advises applicants to operate under established legislation and regulations, such as to prevent harassment of wildlife (Section 106 of the **Wild Life Regulations** under the **Wild Life Act**) and guidance with respect to wildlife and their habitats (e.g. nesting birds, caribou, waterfowl, wetlands, inland fish, rare plants, riparian species) to avoid or minimize adverse impacts.

Pursuant to Section 106 of the **Wild Life Regulations**:

- a. A person shall not operate an aircraft, motor vehicle, vessel, snow machine or allterrain vehicle in a manner that will harass any wildlife;
- b. You are advised that helicopter supported exploration programs must be conducted in a manner that does not disturb, harass or harm any animal life that you encounter. This can easily be accomplished by avoiding concentrations of wildlife by rescheduling the planned activities for another day.
- c. Under no circumstances should nesting raptors be approached, not even for a “harmless” look. The startle effect that helicopters have on nesting raptors can be detrimental and therefore either a 600 m horizontal buffer from cliff faces or an altitude of 300 m must be observed.

No vegetation clearing is to occur within 800 metres of a bald eagle or osprey nest during the nesting season (March 15 to July 31) and 200 metres during the remainder of the year. The 200m buffer also applies to all other raptor nests (e.g. Northern Goshawk, Sharp-shinned Hawk, Merlin, American Kestrel, Great-horned Owl, Boreal Owl, Northern Saw-whet Owl). The location of any raptor nest site must be reported to the Wildlife Division.

The Wildlife Division requires a minimum 50m naturally vegetated buffer to be maintained along the scheduled salmon river running through the property (Gander River) & a 30 m buffer along all other waterbodies and wetlands to protect sensitive riparian and aquatic species, and their habitat.

The **Migratory Birds Convention Act, 1994, Migratory Bird Regulations, Wild Life Act** and **Wild Life Regulations** protect birds and prohibit the disturbance or destruction of bird nests and eggs in Newfoundland & Labrador. Proponents are advised to develop and implement appropriate preventative and mitigation measures to avoid incidental take of birds, nests and eggs.

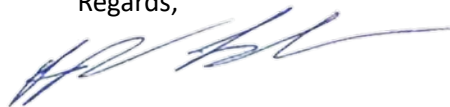
Proponents must adhere to the **Motorized Snow Vehicle and All-Terrain Regulations** under the **Motorized Snow Vehicle and All-Terrain Act** (O.C.96-240) <http://www.assembly.nl.ca/legislation/sr/regulations/rc961163.htm>

The proponent must follow appropriate hunting and trapping protocols as set in the annual Hunting and Trapping Guide. Proponents are advised to develop and implement appropriate preventative and mitigation measures to avoid incidental take of wildlife species.

This approval is due to expire on December 6, 2023.

If you have any questions concerning this approval, please contact the Mineral Lands Division at exploration_approval@gov.nl.ca

Regards,



Bernadine Lawlor

Exploration Approvals Geologist

Cc: Kevin Sheppard, Director, Mineral Lands Division



Government of Newfoundland and Labrador
Digital Government and Service NL

Development Permit (1st Renewal) Gander River Protected Area Regulations

May 24, 2023

File Number: MP-2022 101049 00
Permit Number: 265844

Labrador Gold Corporation
326 Rusholme Road
Toronto, ON M6H 2Z5

Date of Issue: May 24, 2023

Date of Expiration: May 24, 2024

Proposed Development: Mineral Exploration

Location: Glenwood
North side of Gander River, northeast of Glenwood
8km NE of Glenwood, 4.5km SSE of Home Pond

Permission is hereby granted for the proposed development outlined above subject to the following conditions:

1. The development must be located and constructed in accordance with your approved application dated January 2, 2022.
2. No access permitted to Route 1. Access must be constructed from the local road.
3. The attached recommendations of the Government Service Centre being strictly adhered to.
4. Before any excavation takes place, please contact Mr. Randy Tucker, Aliant, Fort William Building, St. John's, NL, A1C 5H6 (709-739-2576) or Mr. Brian Parsons, Aliant, P.O. Box 4000, Gander, NL, A1V 1X2 (709-256-5220). This is to ensure there is no interference with any fibre optic cable that has been installed.
5. The Permit Card must be fastened in a conspicuous place so as to be seen from outside the building during the period of construction.
6. This Permit is valid for a period of one (1) year from the date of issue.

This permit does not absolve the applicant from obtaining any leases, permits, or licences which may apply, from any other Provincial, Federal, or Municipal Authority.

Sincerely,



Environmental Technician

Attachments

cc

APPLICATION ACKNOWLEDGMENT
Gander River Protected Area Referral

File No.:	MP-2022 101049 00
GSC File No.:	GA/GSC/10129
Applicant:	Labrador Gold Corp
Use:	Mineral Exploration
Location:	North of Gander River, 8km NE of Glenwood
Date:	February 28, 2022

Digital Government and Service NL (Government Service Centre) has no objections to this proposal provided the following conditions are adhered to:

Waste

1. All waste material shall be considered, prior to disposal, for reuse, resale or recycling.
1. All waste material is to be transferred to an approved waste disposal facility.
2. Derelict vehicles, scrapped equipment and other debris are not to be stored on site. Such material is to be transferred to an approved waste disposal facility or scrap yard on a regular basis.
3. The site is to be kept neat and tidy at all times.
4. Any cut brush should be chopped/shredded, and may be burnt on-site with the approval of the Forestry Services Branch or transferred to an approved waste disposal facility.
5. Tires and used or waste oil is not to be used to aid in the burning of brush.

Gasoline and Associated Products

1. Any drum-based fuel storage (fuel cache) will require review by the Government Service Centre prior to installation.
2. All fuel storage tank system installations other than those connected to a heating appliance of a capacity of 2,500 litres or less are subject to the *Storage and Handling of Gasoline and Associated Products Regulations* and will require approval by Service NL prior to installation.
3. All fuel storage tank systems connected to a heating appliance of a capacity of 2,500 litres or less must comply with the *Heating Oil Storage Tank System Regulations*.
4. The storage, handling and disposal of used and or waste oil must be in compliance with the *Used Oil and Used Glycol Control Regulations*.
5. In order to ensure that a quick and effective response to a spill event is possible, spill response equipment should be readily available on-site. Response equipment, such as absorbents and open-ended barrels for collection of cleanup debris, should be stored in an accessible location on-site. Personnel working on the project should be knowledgeable about response procedures. The proponent should consider developing a contingency plan specific to the proposed undertaking to enable a quick and effective response to a spill event.
6. Any spill or leak of gasoline or associated product is to be reported immediately to Service NL by calling the Environmental Emergency Line at 772-2083 or 1-800-563-9089.

Protected Road Zone Application

Labrador Gold Corp - Gander River Protected Area Application - File # 265844

Agriculture:

As per Land Management Division comments from December 2021 regarding exploration referral E210789 "The area of the property boundary partially overlaps an Agriculture Area of Interest (AOI) (See attached map). In general, the LMD does not have concern with the proposed activities at this time. If activities should interfere with the agriculture properties and future production in this area, the Land Management Division will work with the Mines Branch to mitigate any potential issues."

Aquaculture:

No concerns.

Crown Lands:

There are a number of issued Crown titles in this area. If work is to take place within these issued title sites, permission from the land owner is required.

There may be private land located within this area which may not be on record with the Crown Lands Office. If work is planned on these private land sites, permission is required from the land owners.

Access is not to be blocked. Access routes are considered trails if timber is cut and no other ground disturbance is undertaken. Equipment used on trails would be tracked or high flotation tired equipment, operating directly on the root mat with sufficiently low ground pressure to prevent rutting and soil compaction. Lands does not require application for trails on non-wetland sites.

Disturbance of root mat and exposure of mineral soil by cut and fill using an excavator or other bladed equipment for access is considered road construction. Lands requires application for road construction. The visible presence of a vegetation covered linear feature on the landscape does not mean the feature was once a road, or that the feature is available for upgrading without application. Forest access roads may be in various condition, depending upon the period since last used commercially, construction methods used, and specific site conditions. Culverts, bridges and ditching may also be in various states or completely absent. Roads may be considered completely regressed and no longer considered for upgrade without an application in cases where the route is overgrown and not possible by ATV or snowmobile.

Forest extraction trails often appear as linear features on imagery. These extraction trails are not roads and the root mat was not intended to be disturbed on these. These are considered trails and will require application for use as a road.

If new road construction, or ATV trail use to cross wetlands, is required to access the site, an application for Crown land is required to be submitted and approved before road/trail construction is to begin. The application, and related information can be found at:

<https://www.gov.nl.ca/ffa/lands/applications/>.



Fisheries:
No concerns.
Forestry:
A commercial harvesting permit is required prior to any harvesting or timber removal in the area. An operating permit is required prior to the start of any work during the forest fire season and can be obtained from the local forest management district office. During the forest fire season, a permit to burn must be obtained to ignite a fire on or within 300 metres of forest land.
Land Management:
No concerns.
Wildlife:
<p>The Wildlife Division advises applicants to operate under established legislation and regulations, such as to prevent harassment of wildlife (Section 106 of the Wild Life Regulations under the Wild Life Act) and guidance with respect to wildlife and their habitats (e.g. nesting birds, caribou, waterfowl, wetlands, inland fish, rare plants, riparian species) to avoid or minimize adverse impacts. Pursuant to Section 106 of the Wild Life Regulations:</p> <p>a) A person shall not operate an aircraft, motor vehicle, vessel, snow machine or all-terrain vehicle in a manner that will harass any wildlife; [...]</p> <p>The Gander River is a scheduled salmon River and hence the Wildlife Division requires a minimum 50m naturally vegetated buffer to be maintained along it.</p>



Government of Newfoundland and Labrador
Department of Environment and Climate Change
Water Resources Management Division

Responses Water Resources Management Division

Application or Permit No.: 22-101049

Applicant/Proposed Work: Labrador Gold Corp – Mineral Exploration

Recommendation: Approval (Conditional)

Under the authority of the Water Resources Act, SNL2002 cW-4.01 <http://assembly.nl.ca/Legislation/sr/statutes/w04-01.htm>, the Water Resources Management Division (WRMD) <http://www.mae.gov.nl.ca/waterres/> is responsible for the management of water resources of the province of Newfoundland and Labrador. The WRMD has programs to protect, enhance, conserve, develop, control, and effectively utilize the water resources of the province.

General for All Responses

Application forms for permits and licences, fee schedules, and guidelines are available at: <https://www.gov.nl.ca/ecc/waterres/regulations/appforms/>.

Conditions

Any work in or within 15 metres of Bodies of Water

The proponent must apply for and obtain a permit under the Water Resources Act, 2002, specifically Section 48 <http://assembly.nl.ca/Legislation/sr/statutes/w04-01.htm> for any work in or within fifteen (15) metres of a body of water (including wetlands) prior to the start of the work. The application forms and requirements for when a Section 48 permit are required can be found here <https://www.gov.nl.ca/ecc/waterres/regulations/appforms/>.

Any effluent or runoff leaving the site will be required to conform to the requirements of the *Environmental Control Water and Sewage Regulations, 2003* <http://assembly.nl.ca/Legislation/sr/regulations/rc030065.htm>.

Non-Domestic Water Use for Any Purpose

Prior to the start of construction, the proponent must apply for and obtain a water use licence under the Water Resources Act, 2002 <http://assembly.nl.ca/Legislation/sr/statutes/w04-01.htm> for the use of water from any water source for any purpose. This must be stated for all non-domestic uses with an existing, new or planned water use from any water source.

Development in Shore Water Zones

The proponent must apply for and obtain a permit under the Water Resources Act, 2002, specifically Section 48 <http://assembly.nl.ca/Legislation/sr/statutes/w04-01.htm> for any work in Shore Water Zones prior to the start of construction. Also, any work in the Shore Water Zones must comply with this Department's Policy for Development in Shore Water Zones: <https://www.gov.nl.ca/ecc/waterres/regulations/policies/shore-water/>.



Government of Newfoundland and Labrador
Department of Environment and Climate Change
Water Resources Management Division

Contact: Manager, Water Rights, Investigations and Modelling Section - (709) 729-2295,
waterinvestigations@gov.nl.ca

Development Adjacent to or Within Protected Public Water Supply Area

A Section 39 permit was issued for Mineral Exploration application number: E210789.

Contact: Manager, Drinking Water & Wastewater Section - (709) 729-4048

Date of Response: April 26, 2022

RECEIVED
MAY 10 2022



Digital Government and Service NL

Development Permit

Under authority of:

Protected Road Zoning Regulations

Developer: Labrador Gold Corporation

Development: Mineral Exploration

Location: Glenwood

Permit No.: 265844

File No.: MP - 2022 101049

Authorized Official

A blue ink signature of the authorized official, appearing to be "John", written over a white rectangular background.

Date Issued

Y Y Y Y / M M / D D

2023 05 24

Expiry Date

Y Y Y Y / M M / D D

2024 05 24

NOTE: Display this card in a conspicuous place so that it may be seen from outside the structure.

Government Service Centre Offices:

St. John's (709) 729-3699 - Clarenville (709) 466-4060 - Gander (709) 256-1420 - Grand Falls-Windsor (709) 292-4206 - Corner Brook (709) 637-2204 - Happy Valley-Goose Bay (709) 896-5428

COMMERCIAL CUTTING PERMIT 2023

Permit Number :23-08-01577

Eastern	08	Lewisporte	Miscellaneous-Lewisporte	2023/04/14
Region	District	Zone	W.C.	Date Issued

Under and by virtue of The Forestry Act , Permission is hereby granted to:

Name:	John Clarke	Phone:	(709) 687-2106
Address:	Labrador Gold Inc. P O Box 19 Glenwood, NL A0G 2K0	Driver's Licence #:	

To cut timber to the conditions and restrictions as stated below:

Total Volume to be harvested:	softwood	20m³
	hardwood	20m³

Stumpage Rates:

None Specified

Location where timber is to be cut:	Salmon pond/Fourth pond Forest access Rd.
Location where timber must be piled for scaling:	Roadside

Standard Conditions:

- All Commercial Cutting Permit holders must have prior written approval from forestry officials, before moving harvesting operations to alternate operating areas identified within this permit.
- All harvesting equipment must be equipped with a fully-charged, 4.5 kilogram fire extinguisher at all times.
- All equipment associated with harvesting operations conducted under this commercial cutting permit, shall be removed from the operating area upon permit expiry, unless otherwise agreed to by a Forestry Official.
- During the cutting and removal of timber, permit holders must adhere to all requirements of the Departments ISO 14001:2015 Environmental Management System, all Standard Operating procedures and Emergency Response procedures.
- Cutting is NOT permitted within 100 metres of the centerline of any routed highway unless permission is provided under a special condition of this permit.
- The cutting of White Pine (*Pinus strobus*) or Red Pine (*Pinus resinosa*), regardless of tree condition (i.e. dead or alive, standing or felled) is NOT permitted unless express permission has been provided by the District Ecosystem Manager or designate.

Special Condition:as per attached Exploration approval E210554

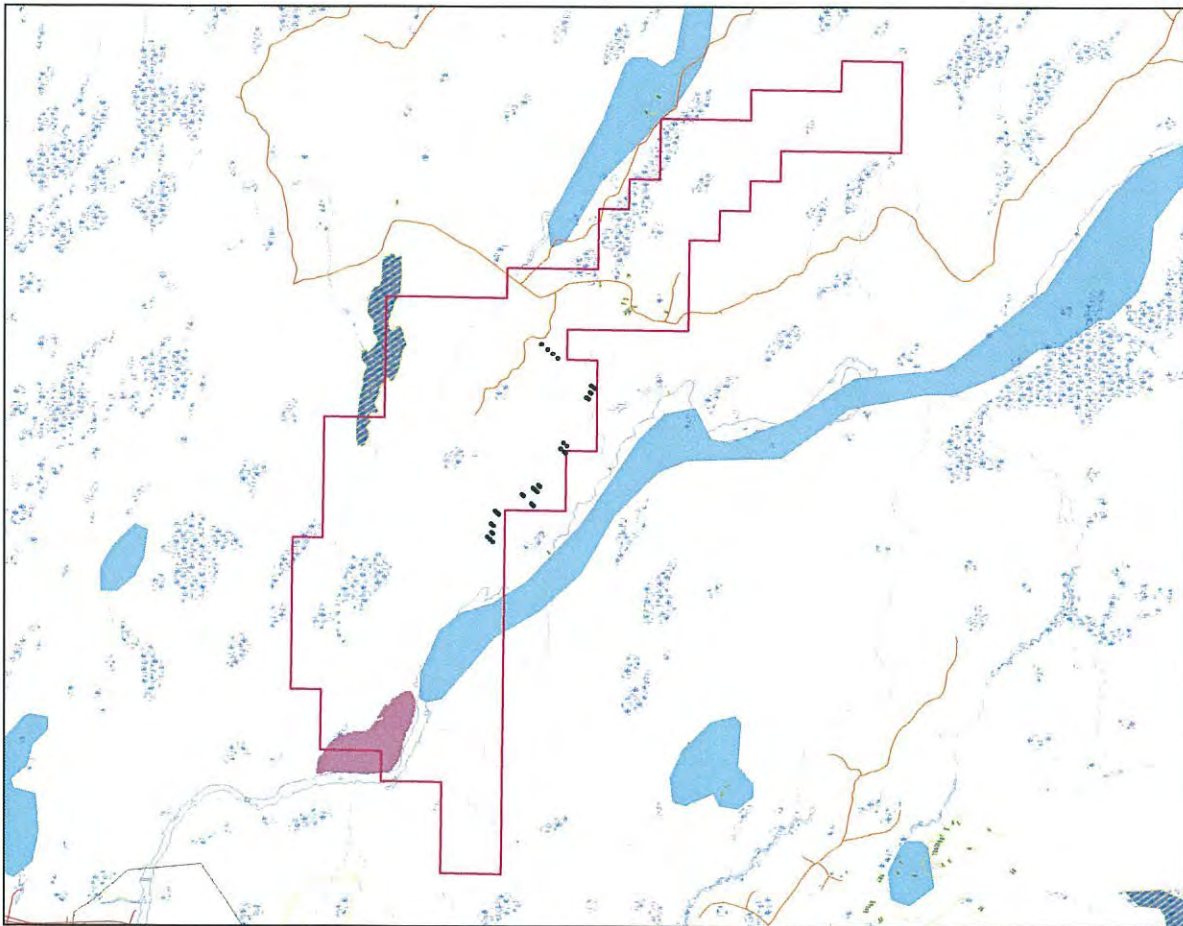
This permit is effective starting: **2023/04/14** and expires **2023/12/31**

Fee for the issuance of this permit is: **\$50.00**

Payment Method: **Visa**


 FORESTRY OFFICIAL

Labrador Gold - Kingsway Property
E210554

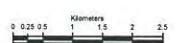


Agriculture Land Use

- 2021 Regional DCH
- Property
- Agriculture Properties
- Active Applications
- Non Active Applications
- Area of Interest
- Agricultural Development Area
- Agriculture Fields



Scale 1: 60,000



NTS Reference 25/02
Universal Transverse Mercator
Zone 21



Department of Fisheries, Forestry and Agriculture
July 2021

Designed for illustrative purposes ONLY



Place: Lewisporte - District 8
Date: April 2023

OPERATING PERMIT

ISSUED UNDER SECTION 105 OF THE FORESTRY ACT

In accordance with the **Forest Fire Regulations**, Labrador Gold Inc. of
Glenwood Phone #: 709 687 2106 Is granted permission to carry out
A logging or industrial operation during the 2023 Forest Fire Season on Crown/Private land located at
Salmon Pond/Fourth Pond Access Road as per contract # E210554

Issued by: Joanne Head
On behalf of the
Minister of Fisheries and Land Resources

OPERATING PERMIT CONDITIONS

1. The permittee must follow all relevant sections of the Forest Fire Regulations. These regulations can be found at - <https://www.assembly.nl.ca/Legislation/sr/regulations/rc960011.htm>.
2. Forest fire suppression equipment as specified in the Forest Fire Regulations or any deviations as specified by a Forestry official must be located at the operating site of all operations and maintained in good working order.
3. In the event of a move to a new operating site written notification on the location of forest fire suppression equipment is to be provided to the Forestry office issuing this permit.
4. Inspection(s) will be carried out to determine if the location of forest fire suppression equipment is suitable.
5. A copy of the operating permit must be on the operating site and must be shown when requested by a Forestry official.
6. This permit may be temporarily suspended by a Forestry official if the Fire Weather Index rises to high, very high or extreme in the locality of operations.
7. This permit may be cancelled at any time by a Forestry official.
8. Where this permit is suspended or cancelled and the permittee continues operations, the permittee will be liable on summary conviction to a fine of not less than two hundred dollars for every day or part of a day that operations continue in violation on the notice of suspension or cancellation.
9. A person who fails to comply with the provisions of this permit is guilty of an offence and subject to such penalty as prescribed by *The Forestry Act*.
10. This permit is not transferable.
11. Other conditions as attached or below:

Important Information

(Includes details about the availability of printed and electronic versions of the Statutes.)

[Table of Regulations](#)

[Main Site](#)

How current is this regulation?

CONSOLIDATED NEWFOUNDLAND AND LABRADOR REGULATION 11/96

Forest Fire Regulations
under the
Forestry Act
(O.C. 96-178)

Amended by:

31/99
27/00
2001 c42 s45
31/02
23/19
38/20

CONSOLIDATED NEWFOUNDLAND AND LABRADOR REGULATION 11/96

Forest Fire Regulations
under the
Forestry Act
(O.C. 96-178)

Under the authority of section 109 of the *Forestry Act* and the *Subordinate Legislation Revision and Consolidation Act*, the Lieutenant-Governor in Council makes the following regulations.

REGULATIONS

Analysis

- [1. Short title](#)
- [2. Interpretation](#)
- [3. Prohibition](#)
- [4. Exceptions](#)
- [5. Fire weather index](#)
- [6. Lighting and smoking other materials](#)
- [7. Use of flammable material](#)
- [8. Further prohibitions](#)
- [9. Wood stoves](#)
- [10. Transportation of volatile flammable substances](#)
- [11. Travel on forest land](#)

Exceptions

4. Notwithstanding section 3, a person may light a fire on forest land or within 300 metres of forest land without a permit

- (a) in a prepared location in a provincial, national, municipal or private park that has facilities to contain open pit fires when permission to light those fires is granted by a park attendant who is responsible for supervision in the park during the period the park is open to the public and every park shall have fully functional back tank pumps of a type approved by the forest service each with a 20 litre tank filled with water and located at a central point in the park where open pit fires are permitted and provided that there are at least 2 pumps for every 10 prepared sites in a park;
- (b) on sand, gravel, rock, mineral soil or other non-combustible materials if
 - (i) the fire is located at a distance of not less than one metre from any flammable material,
 - (ii) the space directly above the one metre area around the fire is at least 3 metres from any overhanging trees,
 - (iii) the fire does not exceed 0.5 metres in height and 0.5 metres in width, and
 - (iv) the person has access to at least 8 litres of water or a shovel at all times.
- (b.1) in an outdoor wood burning unit if
 - (i) the unit is made entirely of non-combustible materials,
 - (ii) the unit completely contains the fire,
 - (iii) the unit is screened to prevent the escape of sparks or other burning material,
 - (iv) the unit rests on legs or supports and is placed on mineral soil or non-combustible material having a surface area of not less than 1.5 square metres, and
 - (v) the unit is located not less than 3.5 metres from the nearest woods, brush or other flammable material; or
- (c) in an incinerator unit if
 - (i) the unit completely contains the fire and is screened to prevent the escape of sparks or other burning material,
 - (ii) the unit is located on private property and not less than 15 metres from the nearest woods, brush or other flammable material,
 - (iii) the unit is in good working order and an attendant is on site if the fire weather index is high, very high or extreme, and
 - (iv) all incinerator ash is totally extinguished before being discarded on mineral soil not less than 15 metres from the nearest woods, brush or other flammable material.

[Back to Top](#)

Travel on forest land

11. (1) A person shall not travel through forest land during the forest fire season on an all-terrain or motorized vehicle unless the exhaust pipe of that vehicle is fitted in accordance with the manufacturer's original specifications with muffler and proper screening or baffling devices to prevent the escape of sparks or particles of burnt carbon and the exhaust system is kept clean of all debris.

(2) The unit or operator shall be equipped with a fire extinguisher containing a minimum of 225 grams of ABC class dry chemical.

48/95 s11; [23/19 s3](#)

[Back to Top](#)

Use of timber harvesting equipment

12. (1) A person shall not use machinery or equipment in the harvesting of timber during the forest fire season unless

- (a) the exhaust pipe of that machinery or equipment is fitted in accordance with the manufacturer's original specifications with muffler and proper screening or baffling devices to prevent the escape of sparks or particles of burnt carbon;
- (b) the unit is equipped with a fire extinguisher, containing a minimum of 4.5 kilograms of ABC class dry chemical, listed and labelled by a national testing laboratory recognized by the fire commissioner; and
- (c) the unit is kept clean of all debris.

(2) A person shall not use a power saw during the forest fire season unless the exhaust is fitted in accordance with the manufacturer's original specifications with muffler and proper screening or baffling devices to prevent the escape of sparks or particles of burnt carbon and the operator has a fire extinguisher on his or her person containing a minimum of 225 grams of ABC class dry chemical.

48/95 s12; [27/00 s2](#); [23/19 s4](#)

[Back to Top](#)

Logging or industrial operations

13. (1) A person shall not carry out a logging or industrial operation on forest land during the forest fire season unless the logging or industrial operation is carried out under an operating permit issued by the forest service.

(2) The operating permit shall specify the conditions under which the logging or industrial operation shall be carried out.

(3) The forest fire suppression equipment referred to in the operating permit issued under subsection (1) shall be provided at the operating site in the following ratio:

(a)

<u>Employees</u>	<u>Back Tank Pumps</u>	<u>Axes</u>	<u>Grubbers or Shovels</u>
<u>5 or less</u>	<u>1</u>	<u>1</u>	<u>1</u>
<u>6-10</u>	<u>2</u>	<u>2</u>	<u>2</u>

**Lewisporte District - 2023
Special Provisions for Commercial Cutting Permits
as authorized by Section 28 of the Forestry Act**

1. **Harvest Block:** The permittee must stay within the area designated for his/her operation.
2. **Silviculture Areas:** No trees may be harvested, uprooted or otherwise damaged in areas designated as • no cutting areas • or silviculturally treated areas, marked or unmarked.
3. **Road Construction:** Approval must be obtained from the Forest Services Branch before any road construction, sawmill site clearing, land clearing or haul roads are established by operators.
4. **Protected Public Water Supply Areas:** Prior to being issued commercial cutting permits within PPWSAs, operators must have written approval from Water Resource Division.
Unless specified otherwise, no cutting is permitted:
 - a) within 150 metres (492 feet) of major reservoirs, including river channel intakes
 - b) within 75 metres (246 feet) of main river channels
 - c) within 50 metres (164 feet) of major tributaries, lakes and ponds, and,
 - d) within 30 metres (98 feet) of other water bodies.
5. **Black Bear Dens:** A 50 metre, no cut, treed buffer will be maintained around known black bear denning sites (winter) or those encountered during harvesting. These den sites must be reported to the Gambo District Office.
6. **Scheduled Salmon Rivers:** a minimum 100 metre no cut buffer is to be left along the major branch of major scheduled salmon rivers. A minimum 50 metre no cut buffer is to be left along major tributaries of scheduled salmon rivers containing spawning and rearing areas for salmon.
7. **Caribou Calving Areas:** Between May 15 and July 31 harvesting is not permitted within a post calving area.
8. **Habitat Snags:** Where safety is not an issue, a minimum average of 10 trees or snags per hectare (average on a cut block) or a clump of trees is to be left on all sites (harvesting and silviculture). Preference will be given to trees over 50 cm dbh.
9. **Cottages Areas:** A minimum 100 metre no cut buffer is to be left around approved cabin development areas and a minimum 30 metre no cut buffer around legally registered cabins.
10. **Provincial T'Railway:** No cutting is permitted within 100 metres of the Provincial T'Railway. Extraction of timber via the Provincial T'Railway is not permitted during periods when NL Snowmobile Federation is operating.
11. **Water Buffers:** No cutting is permitted within 30 metres (98.4 feet) of any waterbody or stream that is identified on the latest 1:50,000 topographic map, or around other water bodies, which may not appear on maps, if they are greater than 1 metre in width. This buffer *must be identified by the operator*, by means of pink flagging tape, *before* cutting can take place.
12. **Slash in Water Bodies:** The felling or deposition of trees, parts of trees and any logging debris (trees, slash, sawdust, slabs, etc.) into streams or water bodies frozen or unfrozen is strictly prohibited.
13. **Raptor Nests:** No forestry activity is to occur within 800 metres of a bald eagle or osprey nest during the nesting season (March 15 to July 31) and 200 metres during the remainder of the year.
14. **Beaver Lodges:** All hardwoods within 30 metres of a waterbody occupied by beaver are to be left standing.
15. **Operating Equipment:** Heavy equipment and machinery are not permitted in any waterbody, on a wetland or bog (unless frozen), without a Certificate of Approval from the Dept. of Environment and Conservation or without contacting the DFO area habitat coordinator. Skidding timber through any waterbody (as defined by Provision 4) is prohibited.
16. **Fuel:** No heavy equipment or machinery is to be refueled, serviced, or washed within 30 metres of a waterbody. Gasoline or lubricant depots must be placed 100 metres from the nearest waterbody.
17. **Waste Oil:** Used or waste oil shall be collected either in a tank or a closed container.
18. **Silt:** Any forestry operation that directly or indirectly results in silt entering a waterbody must be dealt with immediately (A government official must be notified within 24 hours). Failure to comply will result in the operation being stopped.
19. **Garbage:** Garbage created as a result of forest harvesting operations is to be disposed of at an approved garbage disposal site.

The total volume to be harvested on your current permit is shown as softwood and hardwood, measured in m³ (solid). There will be no overcutting.

Softwood Volume: AAC Wood-pulpwood and sawlogs.

Hardwood Volume: AAC Wood-firewood and sawlogs – white birch (10% of this volume must consist of other hardwoods, juniper and dead wood not suitable for pulpwood or sawlogs).

Scale sheets of all timber harvested must be received at the district office no later than the 20th of the following month in which the scale occurred.

Any questions, please contact the district resource office in Lewisporte at (709) 535-2706.

Sawlog: Any portion of a tree that can yield as measured, in accordance with the *Manual of Scaling Instructions of the Province of Newfoundland*, a log 2.5 m or more in length and an equivalent net top diameter, after deduction for cull and defects of 12 cm or more inside bark.

Pulpwood: Any portion of a tree unsuitable for a sawlog that can yield a piece of wood 2.5 m in length with a top diameter 6 cm or greater outside bark and defects within the limits pursuant by the Timber Scaling Regulations.

Softwood Volume: Any change to your original cutting permit (i.e. volume, cutting area, royalty rates, etc.), will be addressed by an amendment showing the amendment date and number.

General Operating Conditions

Under authority of the Forestry Act, Chapter F-23 and the Cutting Regulations, the following conditions apply to your permit:

1. The holder of this permit shall exercise strict and constant supervision of the logging operation.
2. Equipment and material used in cutting operations under this permit shall not cause damage to or interfere with passage on any forest access road, or impede water flow in access road ditching.
3. All royalty payments and permit returns must be submitted to the Forest Service's Branch – Lewisporte District Office **no later than the 20th day** of the month following the quarterly periods ending March 31, June 30, September 30 and December 31.
4. No cutting or transporting timber in or through Silviculture areas (plantations or thinned stands). Damage to young growth must be prevented.
5. All timber cut must be removed from Crown Lands to a place under the permit holder's control within 12 months, otherwise the permit holder shall not have right of property to the timber harvested.
6. All waste material and garbage is to be collected and disposed of at an approved waste disposal site on a weekly basis in accordance with the *Waste Material Disposal Act, RSN 1990 c.W-4*.
7. Harvesting blocks must be clear-cut. No selective cutting for sawlogs, pulpwood or firewood – i.e. no points, small timber, single trees or species to be left within the cutover area unless approved by the District office.
8. All timber cut during a logging operation must be utilized, this includes all hardwoods and larch (i.e. juniper).
9. No forestry activity is to occur within 800 meters of a bald eagle or osprey nest during the nesting season (Mar 15 to Jul 31) and 200 meters during the remainder of the year. The location of any raptors nest should be reported to the Forest Services Branch, Lewisporte District Office.
10. A minimum average of 10 wildlife trees per ha must be left on the operation after logging has been completed.

11. No cutting within 100 meters of a cabin development area or 30 meters of a cabin.
12. Where timber harvesting areas are adjacent to waterbodies, a treed buffer zone must be left around such waterbodies as per the following:

Width of buffer (m) = 30 m plus 1.5 times slope (%)

Minimum 30 m treed buffer must be an area of undisturbed vegetation. Where slope stipulations dictate a buffer greater than 30m in width, timber may be harvested within the remainder of the buffer providing logs are cabled or choked out. Heavy equipment must not operate inside any part of a buffer zone.
13. No heavy equipment or machinery is to be refueled and/or serviced within 30 meters of a waterbody. Gasoline or lubricant depots should be placed 100 meters from the nearest waterbody. All fuel storage tanks (including JEEP tanks) must be registered with the Department of Digital Government and Service NL and installed in accordance with the Storage and Handling of Gasoline and Associated Products Regulations. Fuel storage within Protected Water Supplies is more stringent. Please refer to "Additional conditions harvesting within Protected Water Supply areas" for more information.
14. Harvesting or other heavy equipment will not be used on wetlands or bogs without prior approval of the Forest Services Branch, Lewisporte District Office.
15. Skid trails and landings are not to be located adjacent to streams unless approved by the Forest Services Branch, Lewisporte District Office.
16. Any forestry operation that results (either directly or indirectly) in silt entering a waterbody must be dealt with immediately (stop siltation and immediately notify forestry official). Failure to comply could result in the operation being stopped.
17. Harvested timber is not to be stored within 30 meters of a waterbody.
18. Logging debris (i.e. pieces of wood, limbs, sawdust) is not to be deposited nor left in any waterbody, on any forest access road surface or associated ditching.
19. A complete (up to date), departmental issued EMS binder must be on site at all times during operations and available for inspection. All SOP's contained therein are to be followed to ensure protection of the environment.

Appendix B

Resource Road Maintenance Agreement

(Appended as a Separate File)

Appendix C

Kingsway Property Environmental Protection Plan (EPP)

(Appended as a Separate File)

Appendix D

Draft Environmental Guidelines for Mineral and Quarry Materials Exploration

(Appended as a Separate File)