

Atlas Salt

Great Atlantic Salt Project

October 2023



Project Overview

● Project Location

- The Project is located between St. George's and Flat Bay
- It is wholly within the Town of St. George's municipal boundary

● Gypsum Mine
• Flat Bay Project

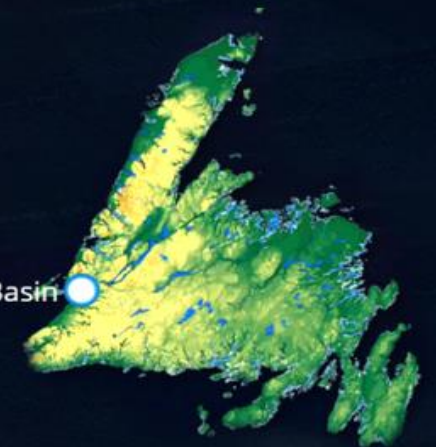
● Great Atlantic Salt Deposit

- Massive high-grade homogeneous deposit
- Environmentally friendly "green" project
- No chemical processing, no toxic tailings
- Can reduce global carbon emissions by replacing overseas imports
- Immediately adjacent to deep water port

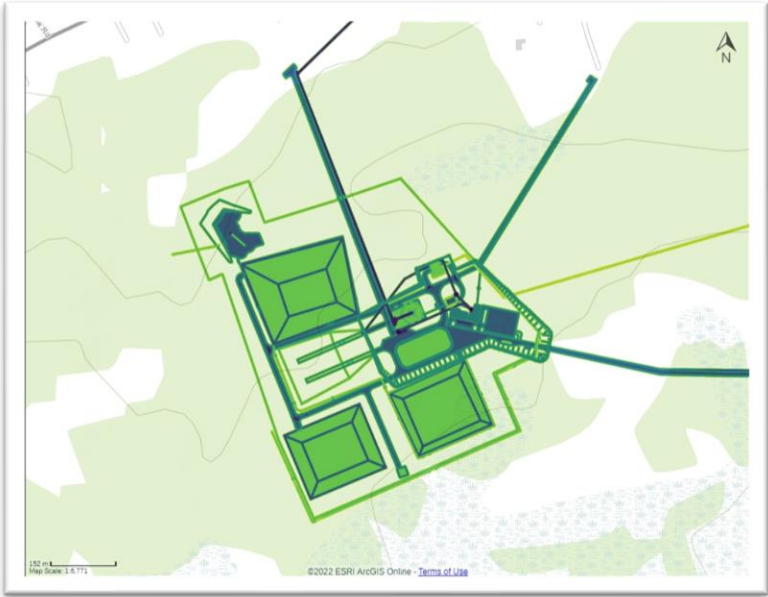
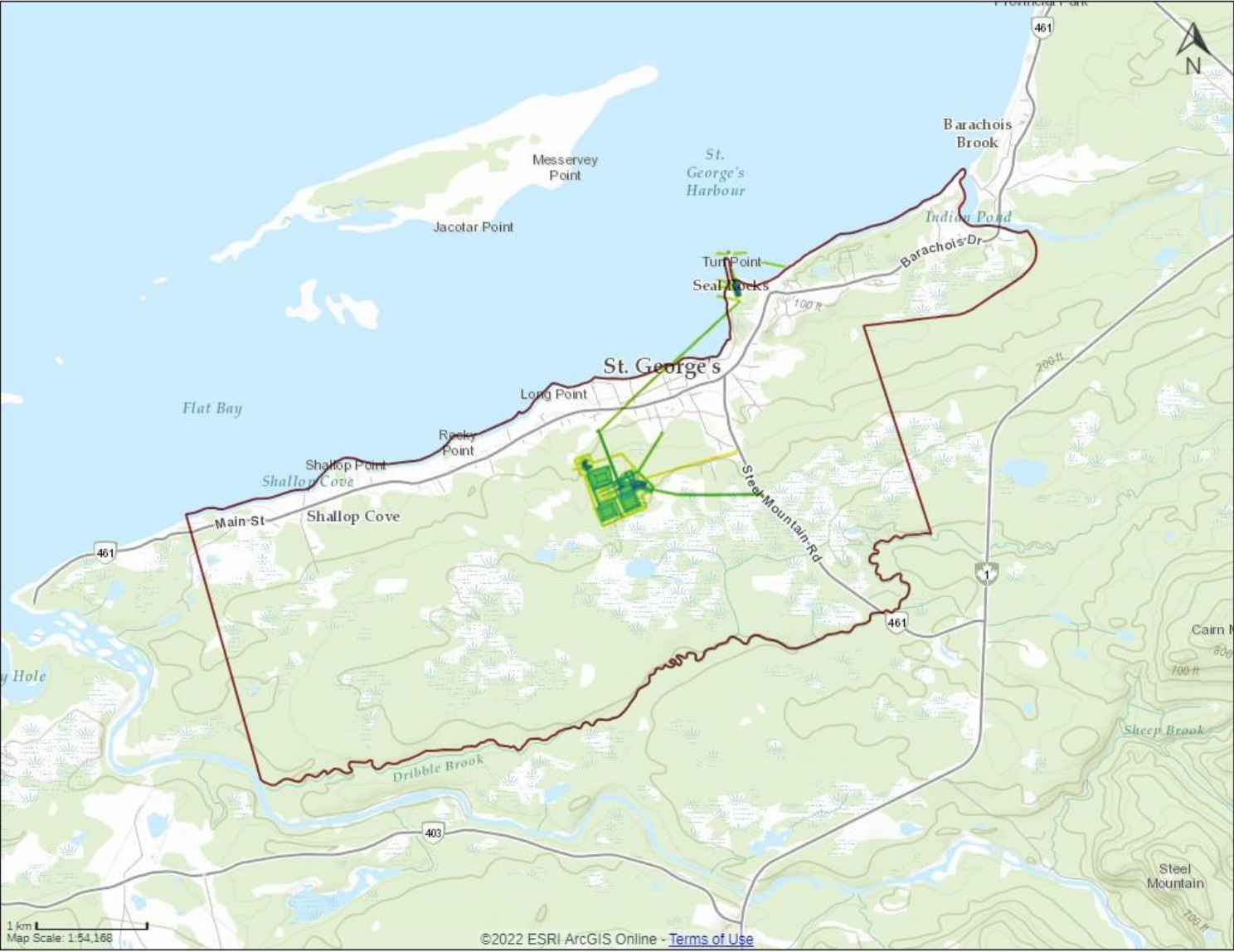
Access Road




**ATLAS
SALT**
Bay St. George Sub-Basin



Atlas Salt Project: Above Ground Layout



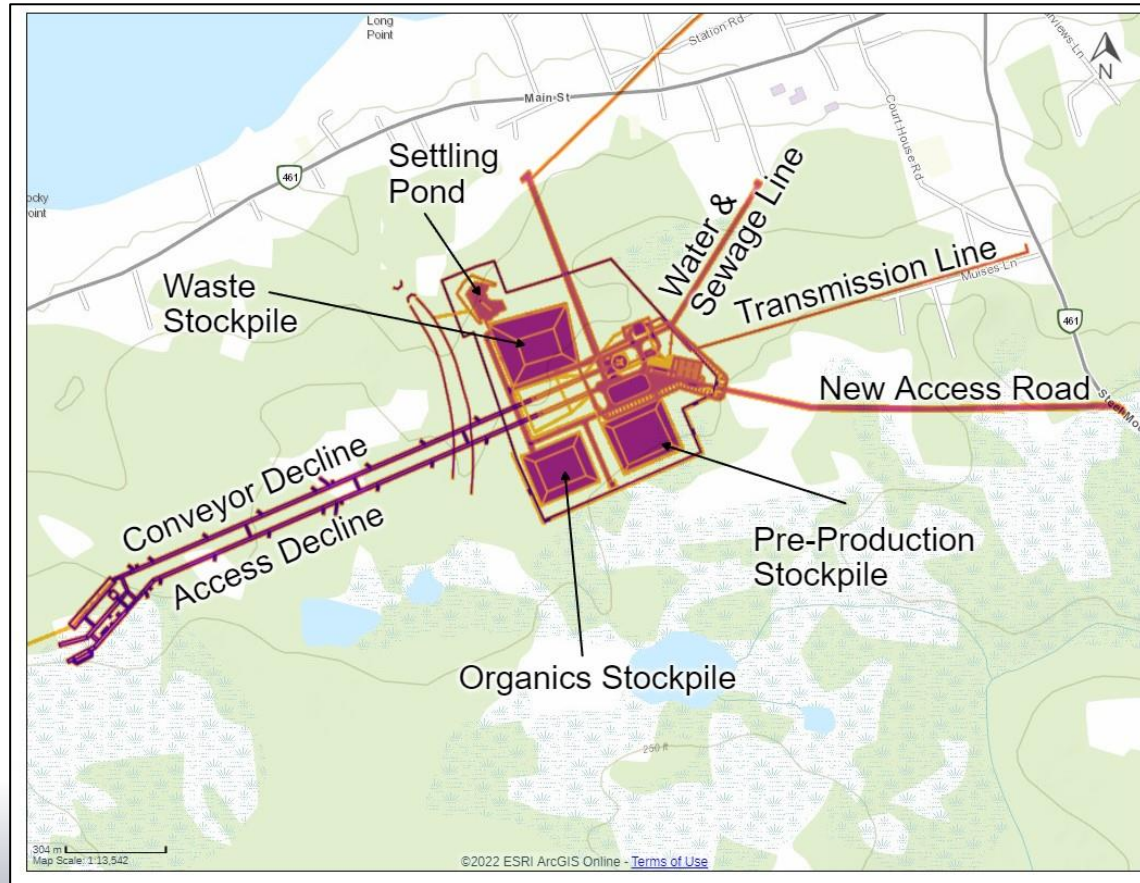
Key Project Components

The core components for the Project include: 1) Underground mine where the salt will be mined, 2) Surface facilities, and 3) Overland conveyor to deliver the salt to Turf Point for shipment to market

Underground Mine



Surface Facilities



Overland Conveyor



OVERLAND CONVEYER PLAN

Schematic Representation



TUNNEL

BRIDGE A

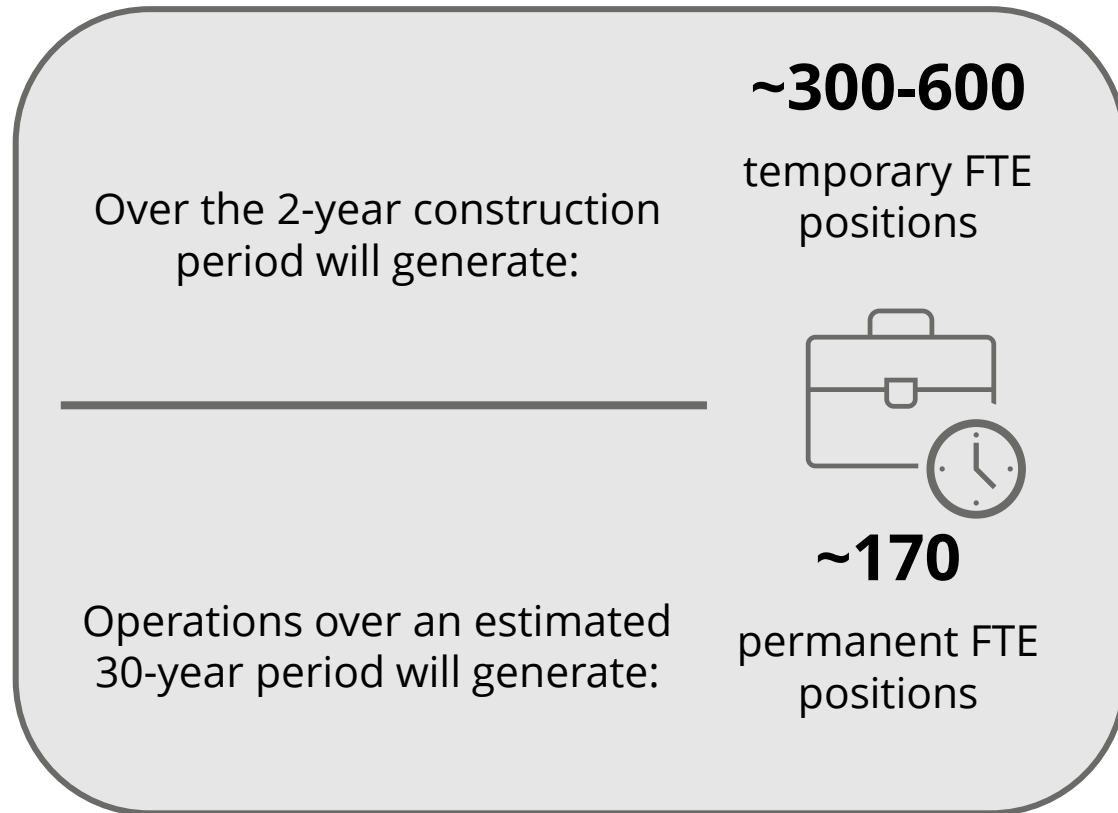
BRIDGE B

TURF POINT PORT



Economy, Employment and Business

- The Project will represent hundreds of millions of dollars in capital investment for the region



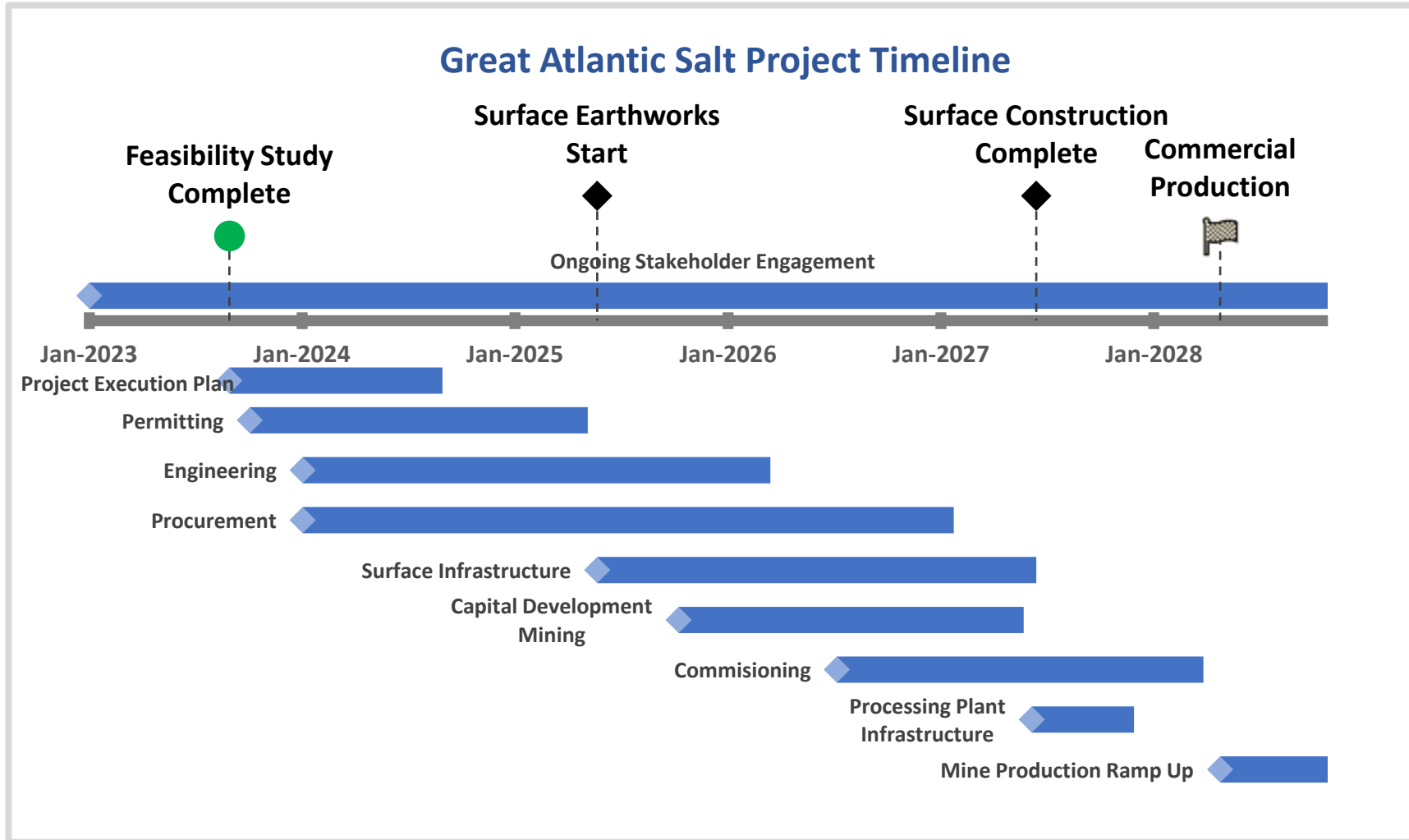
- **Key jobs during construction:**

- Heavy Equipment Operators
- Engineers
- Labourers
- Pipe Fitters
- Electricians
- Powerline Workers
- Health and Safety

- **Key jobs during operations:**

- Mining Personnel
- Underground Maintenance
- Technical Services
- Plant & Surface Workers
- Management & Administration

Great Atlantic Project Roadmap Detail



Thank you for your time and your consideration

Atlas Salt Office

**333 Duckworth Street
St. John's, NL
A1C 1G9
(709) 754-3186**

Atlas Salt Primary Contact

Alasdair Federico
Alasdair Federico, VP-Corporate Affairs

*Tel: (416) - 520 - 1300
Email: afederico@atlassalt.ca*

For questions or comments related to Atlas Salt's proposed Project please contact their engagement email: Engagement@atlassaltpims.com