

Environmental Assessment

Registration Document

Junction Brook Pit #1 & 2 Quarry, Reidville, NL

Prepared by

Rodney's Contracting Limited

File Ref No. 200.20.2898

Permit No. xxxxxxxxx

1.0	NAME OF UNDERTAKING	1
2.0	Proponent	1
2.1	Name of Corporate Body	1
2.2	Address	1
2.3	Chief Executive Officer	1
2.4	Principle Contact Person	1
3.0	THE UNDERTAKING	
3.1	Nature of the Undertaking	2
3.2	Purpose/Need for the Undertaking	2
4.0	DESCRIPTION OF THE UNDERTAKING	
4.1	Geographic Location	2
4.1.1	Figure 1	2
4.2	Physical Features	2
4.2.1	Project Site Description	2
4.2.2	The Present Environment	2
4.3	Construction	4
4.3.1	Access to Site	4
4.3.2	Clearing/and/or Grubbing	4
4.3.3	Pit Development	4
4.4	Potential Sources of Pollution During Construction	4
4.4.1	Air Quality/Noise	5
4.4.2	Waste Production	5
4.4.3	Hydrocarbon Release	5

Table of Contents (Continued)

Page

4.5	Operation	6
4.6	Potential Sources of Pollution during Operation	6
4.6.1	Air Quality/Noise	6
4.6.2	Waste Production	7
4.6.3	Hydrocarbon Release	7
4.7	Potential Resource Conflicts	7
4.8	Occupations	7
4.8.1	Construction Phase	8
4.8.2	Operation Phase	8
4.9	Project – Related Documents	8
5.0	APPROVAL OF THE UNDERTAKING	8
6.0	SCHEDULE	8
7.0	FUNDING	8
8.0	SUBMISSION	8

1.0 NAME OF UNDERTAKING

Junction Brook Pit #1 & Pit 2 Quarry, Reidville, NL (Government of Newfoundland and Labrador, Dept. of Natural Resources File No. 200.20.2898)

2.0 PROPONENT

2.1 Name of Corporate Body

Rodney's Contracting Ltd.

2.2 Address

13 Old Bonne Bay Road
Deer Lake, NL
A8A 1X6

2.3 Chief Executive Officer

Mr. Rodney Langdon
President
13 Old Bonne Bay Road
Deer Lake, NL
A8A 1X6

2.4 Principle Contact Person

Mr. Rodney Langdon
13 Old Bonne Bay Road
Deer Lake, NL
A8A 1X6

Telephone #: (709)-636-6007

Email Address: rodneylangdon@hotmail.com

3.0 THE UNDERTAKING

3.1 Nature of the Undertaking

This proposed project involves the development of a two pits -pit #1 a 4 hectare gravel and sand pit and pit #2 a 3 hectare gravel and sand pit, located in the Junction Brook area adjacent to the existing Marine Contractor's pit (gravel, sand, and rock).

3.2 Purpose/Need for the Undertaking

The purpose of the pits is to remove gravel and sand for lot/land development for commercial and residential in Deer Lake and surrounding areas.

4.0 DESCRIPTION OF THE UNDERTAKING

4.1 Geographic Location

The proposed project is located approximately 3.0km E of Reidville, NL. The quarry location can be seen on Schedule A& B attached.

4.2 Physical Features

4.2.1 Project Site Description

The gravel and sand pit will be the primary feature with this pit. There will not be any work camps and/or associated buildings on this site. This site will be accessed by a pre-existing road from the TCH need Junction Brook.

4.2.2 The Present Environment

The proposed two pit quarry (4 hectare and 3 hectare) is located in an existing quarry area in Western NL. The site is dominated by old fir and white birch trees. Moss and Kalmia are present in low-lying depressions within the boundary of the proposed two pit quarry. Previously constructed forest-access roads have now become surface conduits for water within the proposed area. Topsoil and decaying organic matter is negligible in this area.

4.3 Construction

The construction phase of this site development will primary consist of:

- Clearing and grubbing
- Upgrading of pre-existing access road from pit #1 to pit#2
- Pit development and associated control measures

4.3.1 Site Access

Site access will via a pre-existing quarry pit road from the TCH. There will be no new access road construction needed as a former access road exists but has overgrown with alders from pit #1 to pit #2. Clearing of this road will suffice for access.

4.3.2 Clearing and Grubbing

All timber of size suitable for salvage will be removed and utilized. Grubbed overburden material will be separated and stockpiled for future site remediation.

4.3.3 Pit Development

The pit #1 has an area of approximately 4 hectares and pit #2 has an area of approximately 3 hectares. The proponents plan on first accessing pit #1 for sand, gravel, and borrowed material removal and then accessing pit #2 for screening and washing of pit run for removal. Overburden material suitable for later use will be separated and stockpiled for use in pit closure and site remediation.

4.4 Potential Sources of Pollution during Construction

The construction phase of this development will involve overburden clearing via use of heavy equipment. This activity has inherent potential for pollution. Potential sources of pollution include noise, waste, air emissions and hydrocarbon release from heavy equipment.

4.4.1 Air/Noise Pollution

There exists the potential for an increase in dust creation and noise emission during the pit development. As with the existing pit, both potential pollution events are kept minimal with the proper use of mitigating measures such as:

- Machinery will be properly muffled
- Machinery will comply with all provincial and municipal noise bylaws
- Machinery will have appropriate emission control mechanisms
- Machinery will only travel on approved roads within the pit boundary
- Construction will be done during the daylight hours to limit impact upon any nearby wildlife.
- Water applications will be used, if required, to limit dust
- No houses and/or cabins in this area greater than 2.5 km away
-

4.4.2 Domestic Waste

There exists the potential to create domestic waste during the construction of this pit. The potential impact upon the immediate environment will be kept to a minimum via adhering to the Newfoundland and Labrador Waste Management Regulations.

4.4.3. Hydrocarbon Release

Pit activities could possibly result in the accidental spilling of hydrocarbons such as diesel fuel, engine oil, and hydraulic fluid. To reduce the likelihood and subsequent impact if a spill did occur, the following mitigation measures will be in effect:

- Emergency spill kits will be onsite at all times
- No hazardous or petroleum products will be stored onsite
- Servicing of machinery will be done offsite and at appropriate locations
- All employees will receive spill response training prior to operations.

4.5 Operations

The pit operation will utilize standard excavation methods to collect the materials needed by Rodney's Contracting Ltd. Operations within the pits will include the excavation and loading of granular materials, screening, and washing of material as well as the transportation of these materials. These materials will be used in the lot/land development of the Deer Lake RV Park and Camp Grounds.

Typical equipment found in gravel and sand quarry include

- Dump Trucks
- Front-end Loaders
- Excavators
- Dozers
- Screening/washing plants

A quarry of this nature will be in operation from June/July to September/October.

4.6 Potential Sources of Pollutions during Operations

The potential sources of pollution during operating activities are similar to those during the construction phase. They include air, noise, domestic waste and hydrocarbon release.

4.6.1 Air/Noise Pollution

There exists the potential for an increase in dust creation and noise emission during the pit operations. As with the existing pit, both potential pollution events are kept minimal with the proper use of mitigating measures such as

- Machinery will be properly muffled
- Machinery will comply with all provincial and municipal noise bylaws
- Machinery will have appropriate emission control mechanisms
- Machinery will only travel on approved roads within the pit boundary
- Construction will be done during the daylight hours to limit impact upon any nearby wildlife.
- Water applications will be used, if required, to limit dust

4.6.2 Domestic waste

There exists the potential to create domestic waste during the construction of this pit. The potential impact upon the immediate environment will be kept to a minimum via adhering to the Newfoundland and Labrador Waste Management Regulations.

Sewage facilities will comprise of either a portable toilet or composting toilet.

4.63 Hydrocarbon Release

Pit operations could possibly result in the accidental spilling of hydrocarbons such as diesel fuel, engine oil, and hydraulic fluid. To reduce the likelihood and subsequent impact if a spill did occur, the following mitigation measures will be in effect:

- Emergency spill kits will be onsite at all times
- No hazardous or petroleum products will be stored onsite
- Servicing of machinery will be done offsite and at appropriate locations
- All employees will receive spill response training prior to operations.

4.64 Potential Resource Conflicts during Operations

The proposed quarry site is adjacent to existing pit areas east of the community of Reidville, NL. As such, the proponents will have to maintain satisfactory noise mitigation techniques during operating hours. Other environmental protection measures will include:

- No storing of fuel on site
- No sewage disposal system on site
- Waste materials will be remove daily
- Erosion prevention will be enabled by only clearing the land as needed/the pit is expanded
- Spill kits will be present and maintained by staff
- Spill response training will be provided for staff working on site

4.65 Occupations

Site construction and operation will involve the following occupations as classified by the National Occupations Code (NOC 2011).

4.65.1 Construction

Three heavy equipment operators (NOC 7521) for a period of 1 week

4.65.2 Operation

The operation of the quarry will be carried out by three heavy equipment operators (NOC 7521) for a period of 8 weeks. Construction and operations will be carried out by the existing staff (only).

4.66 Project Related Documents

There are no project related documents associated with this registration.

5.0 Approval of the Undertaking

The following permits will/may be required on order for this project to proceed. Quarry Materials Act and Quarry Minerals Regulations: Quarry Permit/Lease. Provincial Government.

6.0 Schedule

Document submissions/registration	June, 2020
Pit construction/Operation	ASAP

7.0 Funding

Funding for this project will be provided solely by Rodney's Contracting Ltd

Estimated project cost is \$20,000.

8.0 Submission

_____.

Rodney Langdon

President

Rodney's Contracting Ltd.




_____.

Date

Untitled Map

Write a description for your map.

Legend

-  Junction Brook, east of Deer Lake, NL
-  Polygon Measure
-  RODNEY'S CONTRACTING LTD

Junction Brook, east of Deer Lake, NL



Google Earth

Data SIO, NOAA, U.S. Navy, NGA, GEBCO

© 2020 Google

Image Landsat / Copernicus






200 km

Untitled Map

Write a description for your map.

Legend

-  Deer Lake
-  Polygon Measure
-  RODNEY'S CONTRACTING LTD



Google Earth




Image © 2020 CNES / Airbus
Image © 2020 Maxar Technologies
© 2020 Google

3 km

Untitled Map

Write a description for your map.

Legend

-  Junction Brook, east of Deer Lake, NL
-  Polygon Measure
-  RODNEY'S CONTRACTING LTD

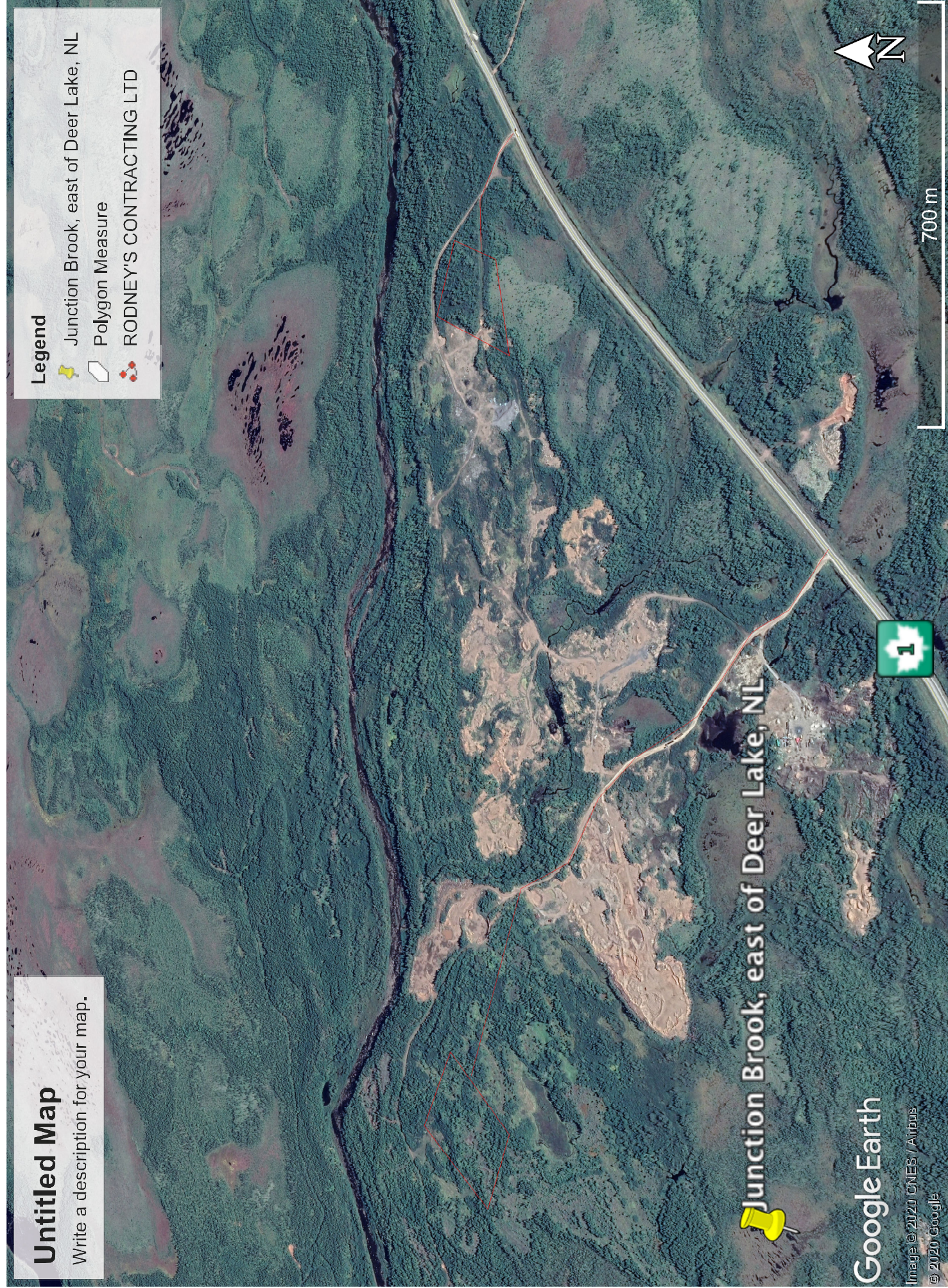
 Junction Brook, east of Deer Lake, NL

Google Earth

Image © 2020 CNES / Airbus
© 2020 Google




700 m



Untitled Map

Write a description for your map.

Legend

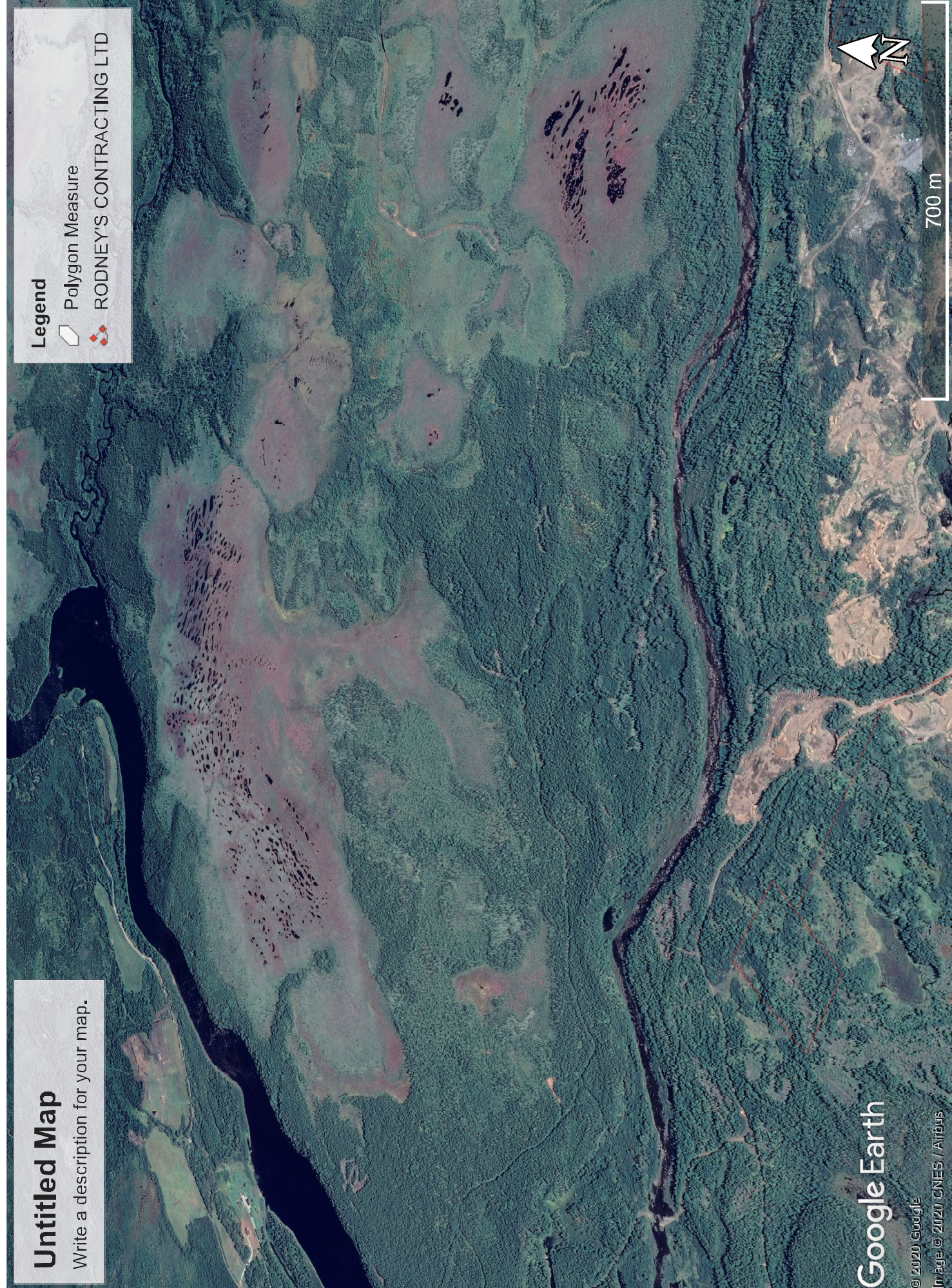
-  Polygon Measure
-  RODNEY'S CONTRACTING LTD

Google Earth

© 2020 Google
Image © 2020 CNES / Airbus





700 m



Untitled Map

Write a description for your map.

Legend

-  Polygon Measure
-  RODNEY'S CONTRACTING LTD

Google Earth

© 2020 Google
Image © 2020 CNES / Airbus



100 m

