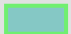
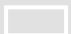


Labrador City Outfall 1

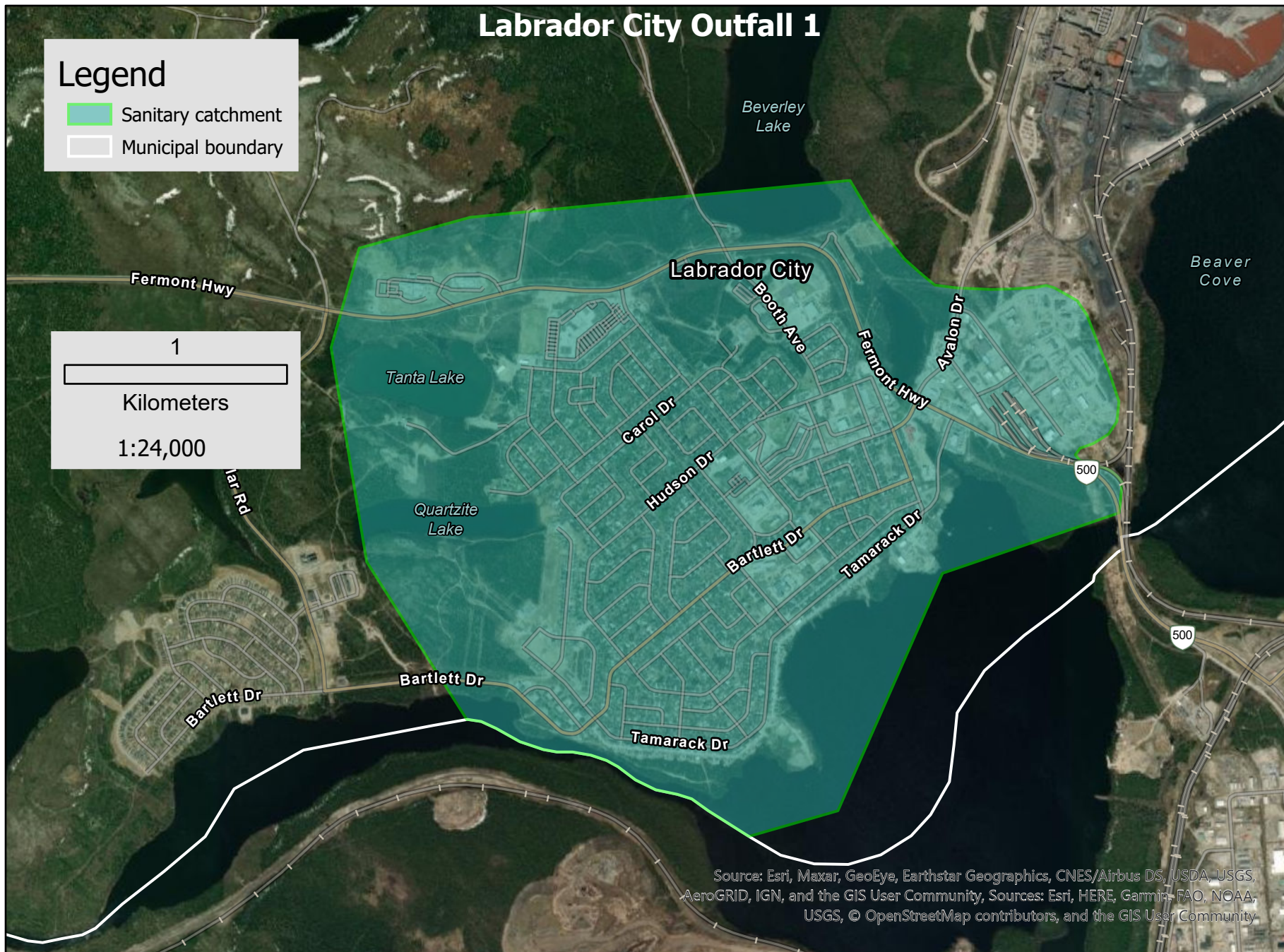
Legend

-  Sanitary catchment
-  Municipal boundary

1

Kilometers

1:24,000



Source: Esri, Maxar, GeoEye, Earthstar Geographics, CNES/Airbus DS, USDA, USGS, AeroGRID, IGN, and the GIS User Community, Sources: Esri, HERE, Garmin, FAO, NOAA, USGS, © OpenStreetMap contributors, and the GIS User Community