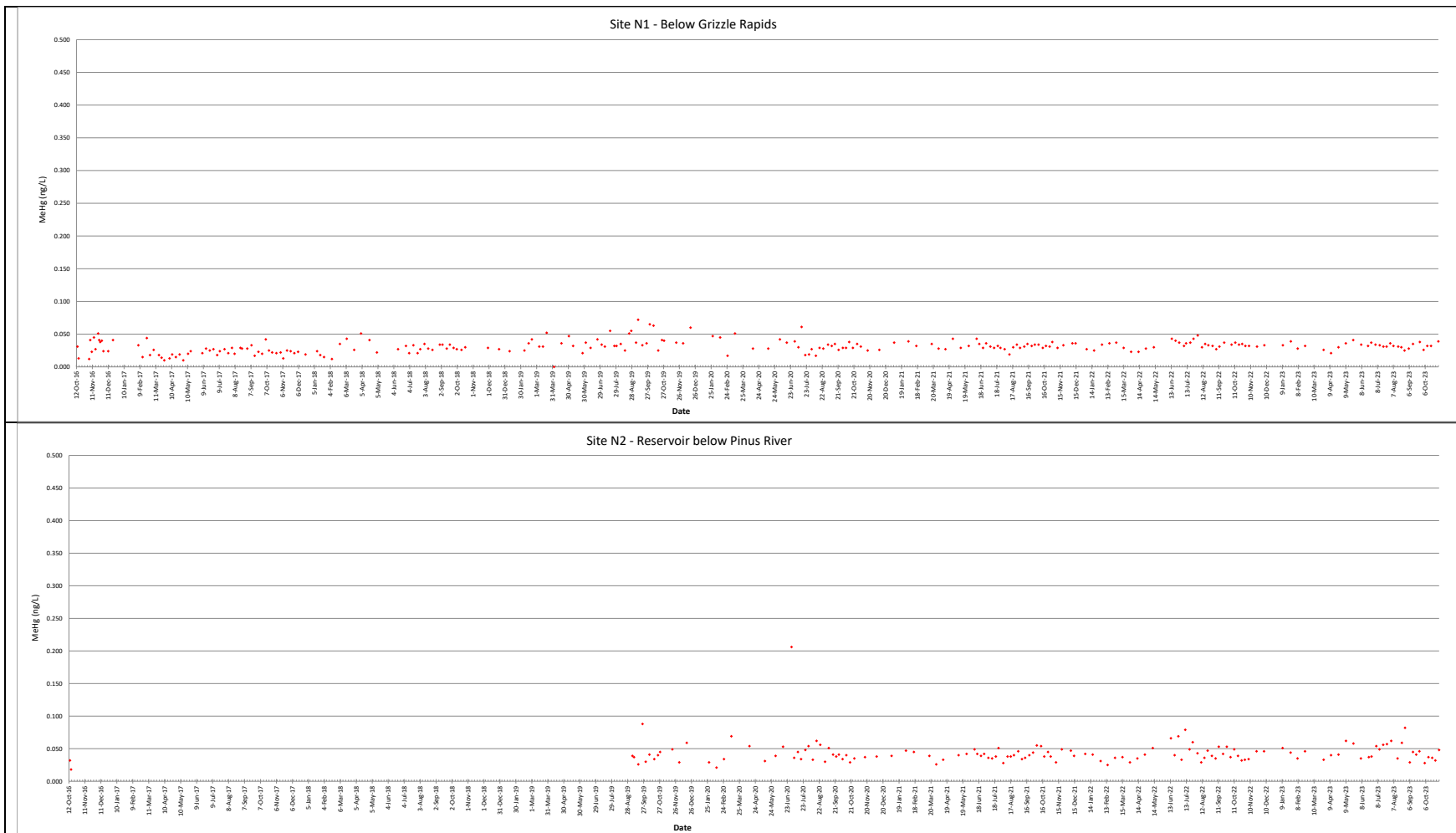
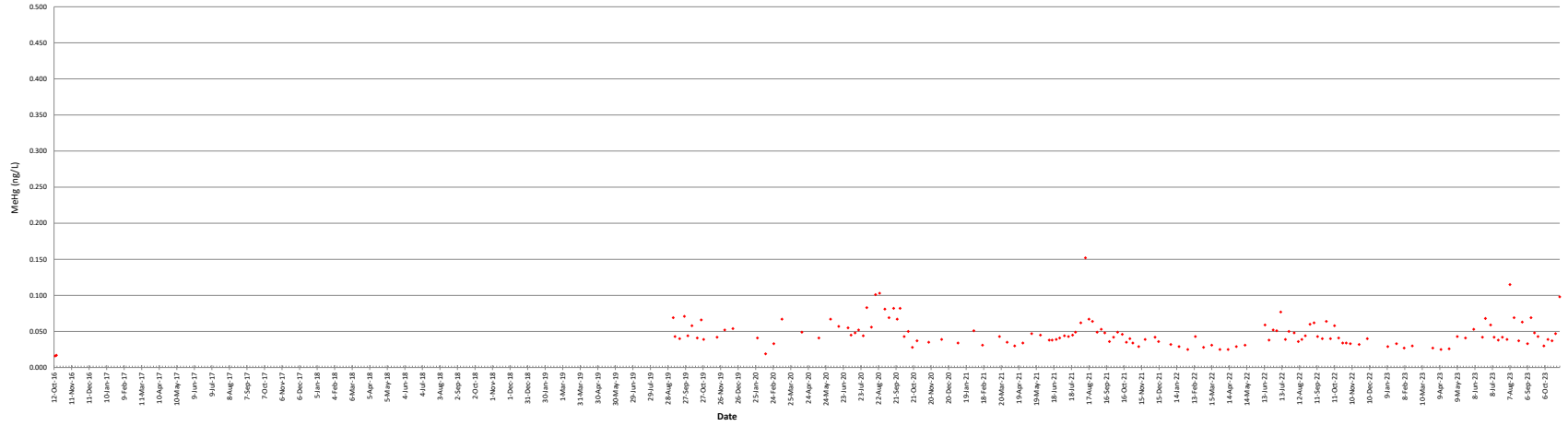


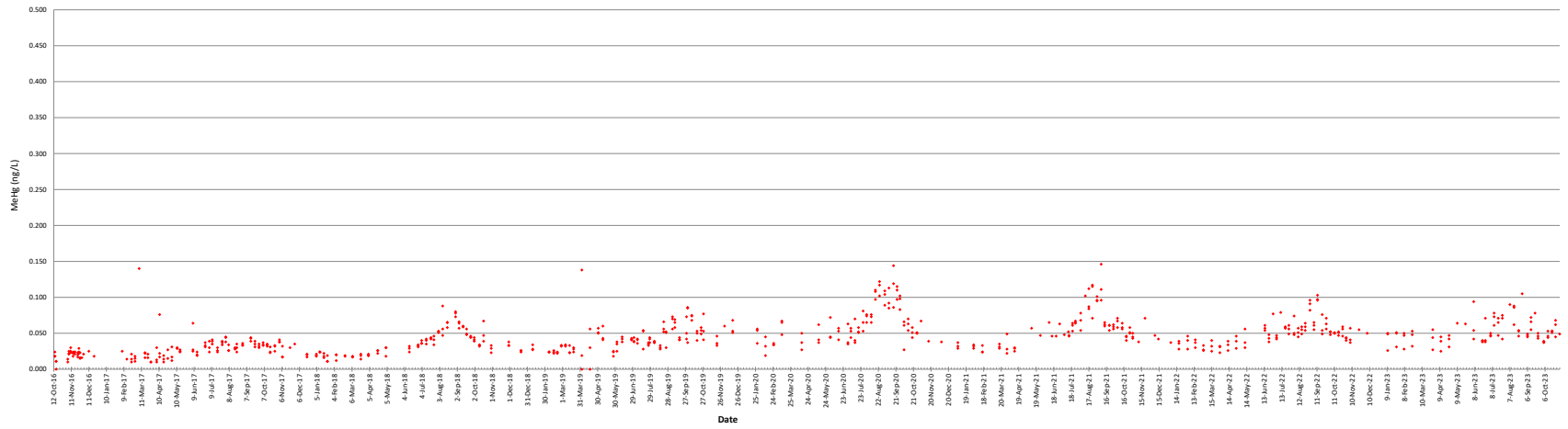
Total Methylmercury (ng/L) in Water



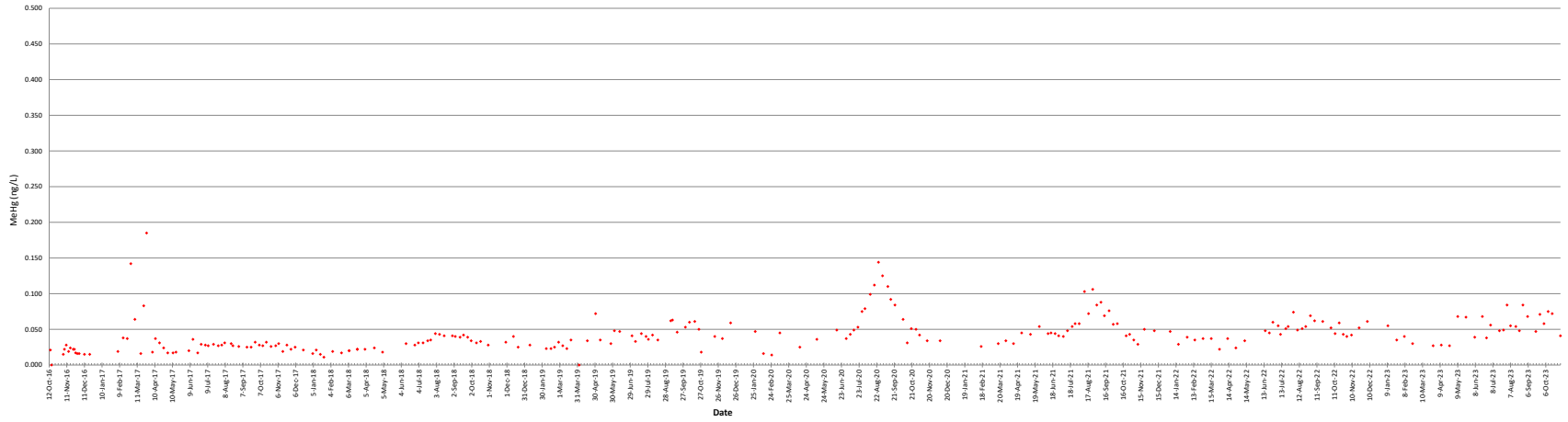
Site N3 - Reservoir between Pinus River and Upper Brook



Site N4 - Above Muskrat Falls (Sampled at Multiple Depths)

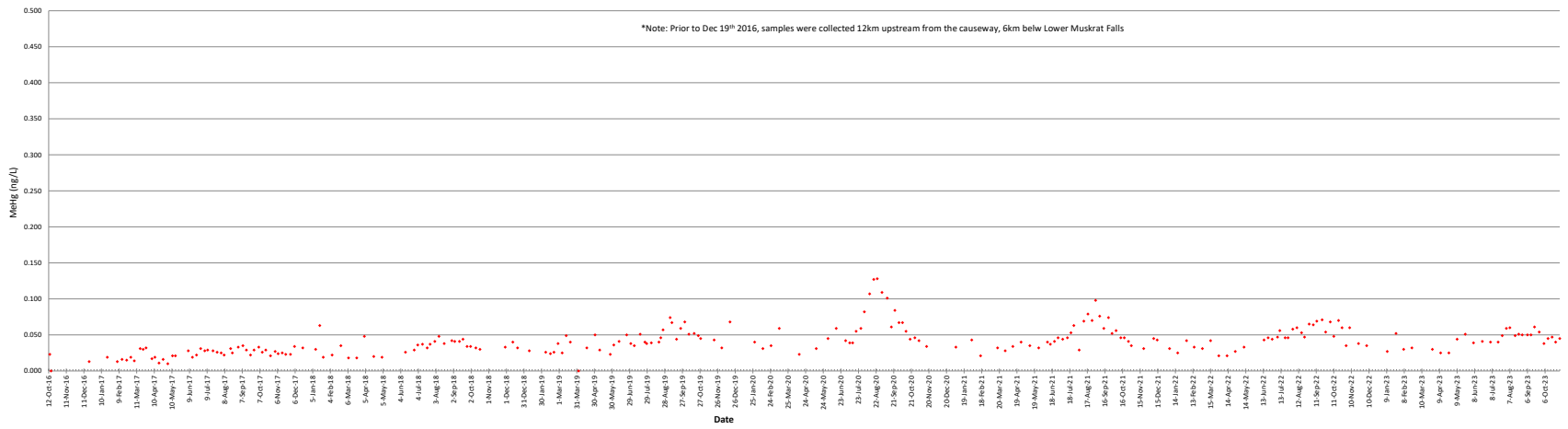


Site N5 - Below Muskrat Falls

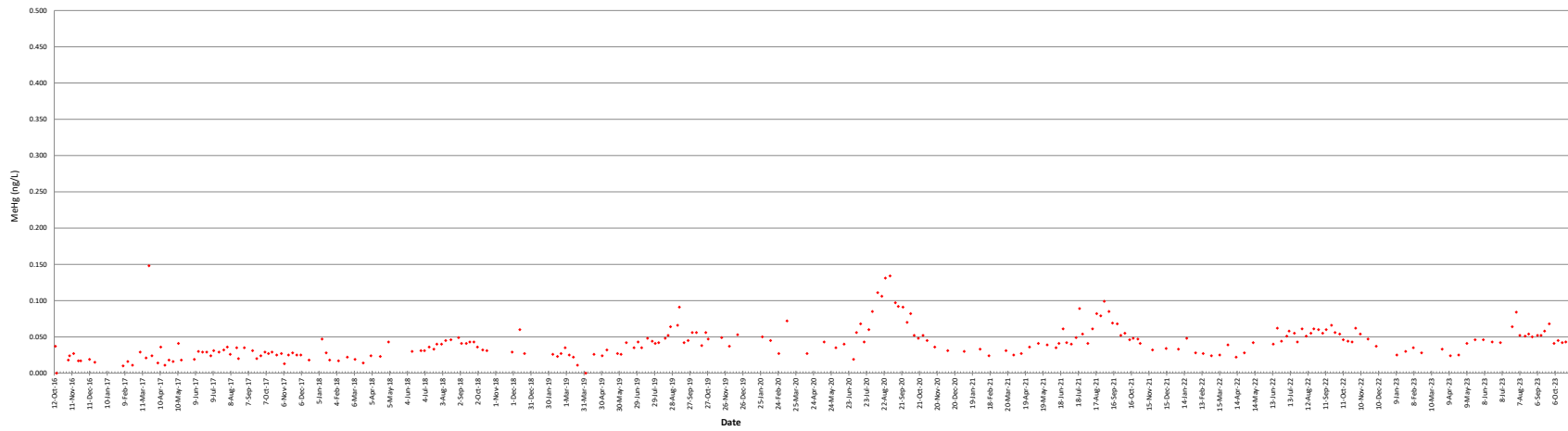


Site N6 - Causeway

*Note: Prior to Dec 19th 2016, samples were collected 12km upstream from the causeway, 6km below Lower Muskrat Falls

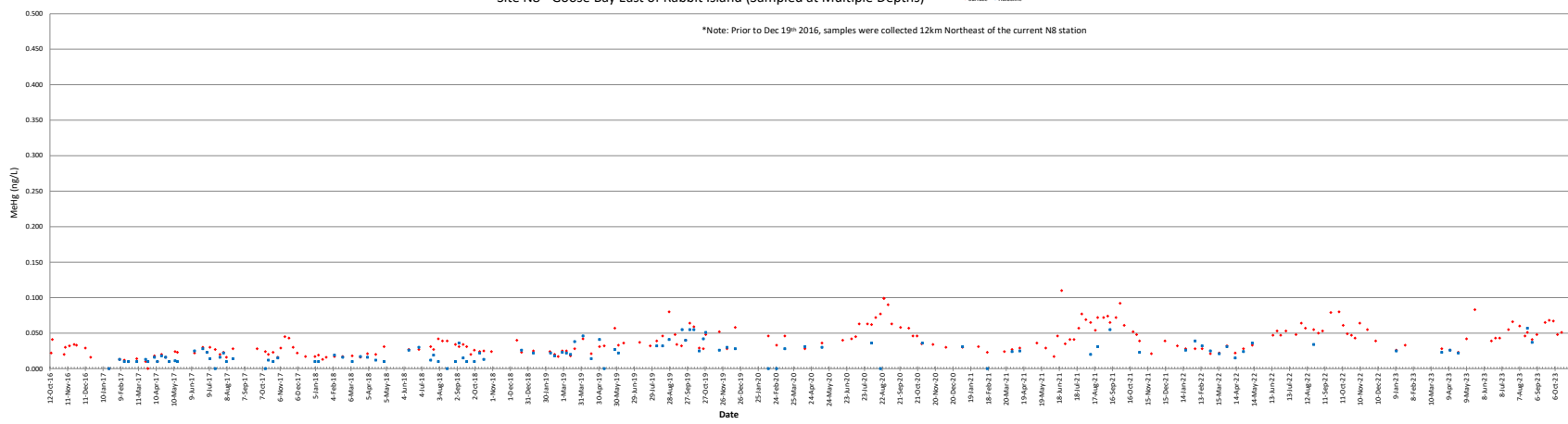


Site N7 - English Point

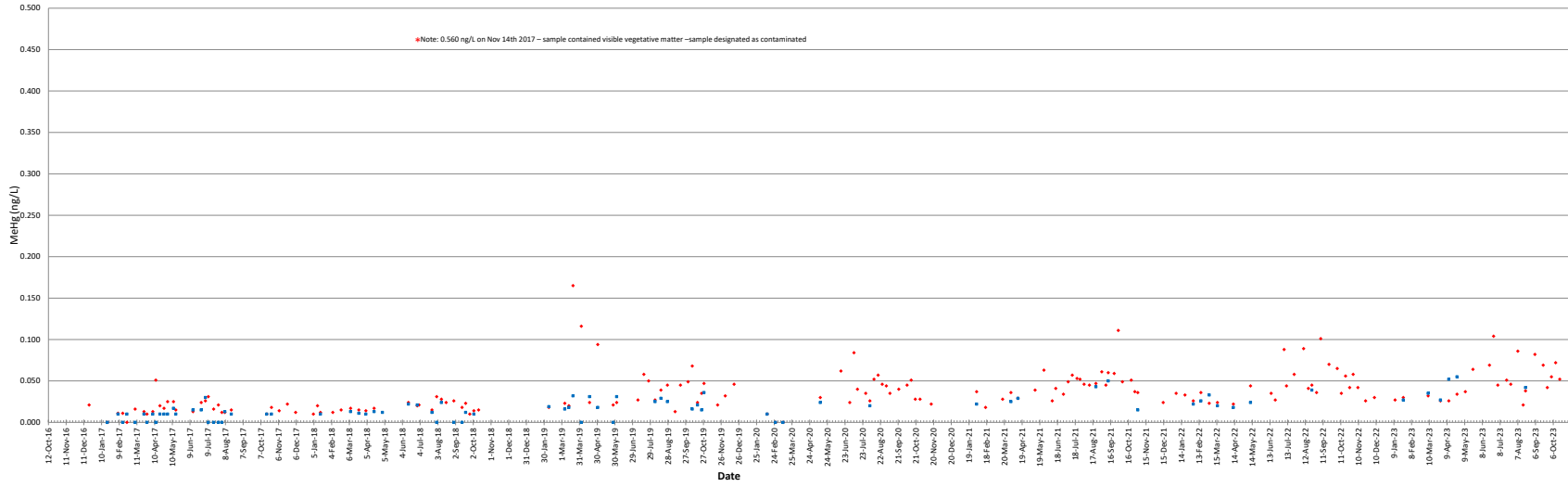


Site N8 - Goose Bay East of Rabbit Island (Sampled at Multiple Depths)

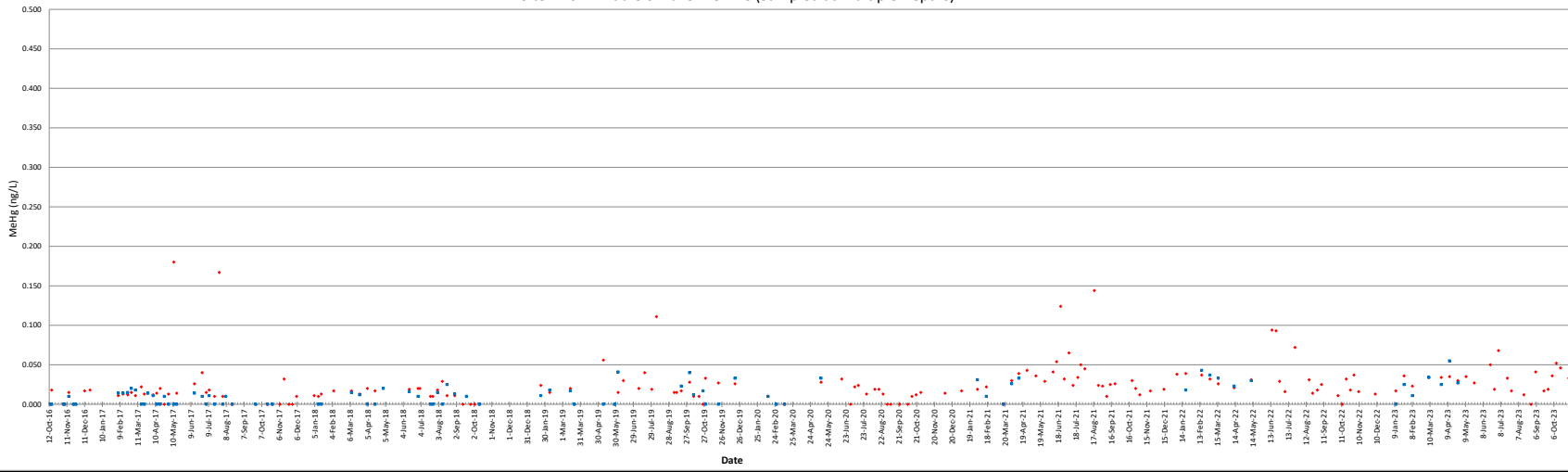
*Note: Prior to Dec 19th 2016, samples were collected 12km Northeast of the current N8 station



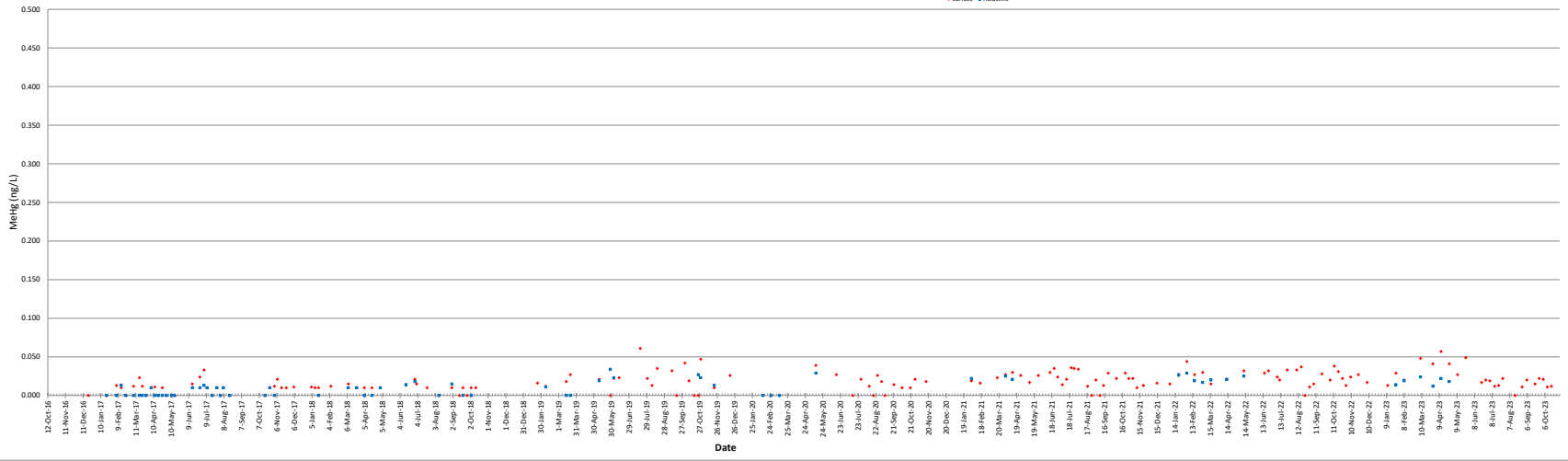
Site N9 - Inflow to Lake Melville (Sampled at Multiple Depths) ● Ice ■ Halocline



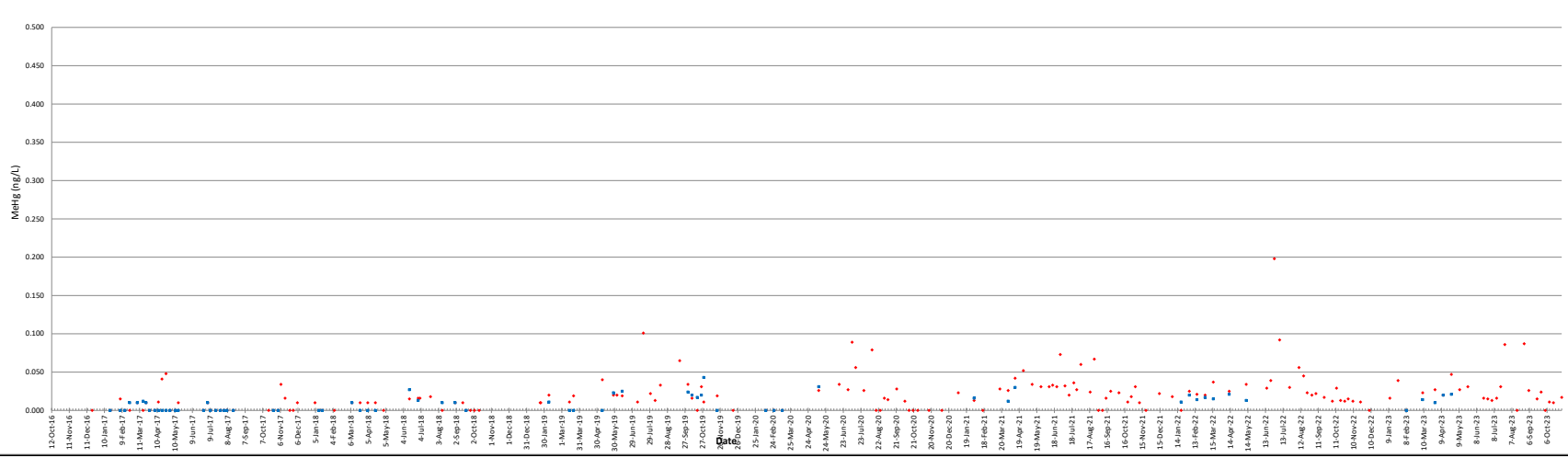
Site N10 - Middle of Lake Melville (Sampled at Multiple Depths) ● Surface ■ Halocline



Site N11 - Middle of Lake Melville (Sampled at Multiple Depths)



Site N12 - Northeastern Lake Melville near Neveisk Island (Sampled at Multiple Depths)



Site N13 - Near Rigolet (Lake Outflow)

