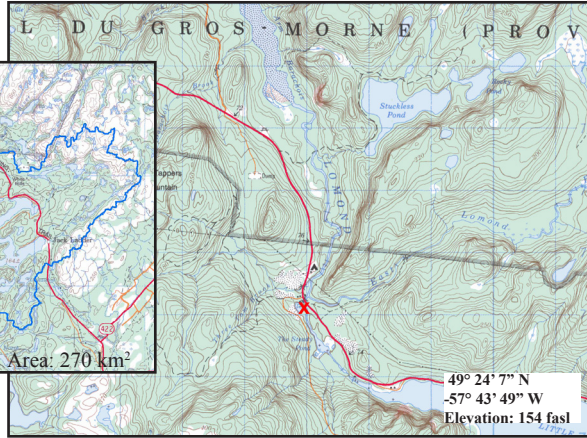
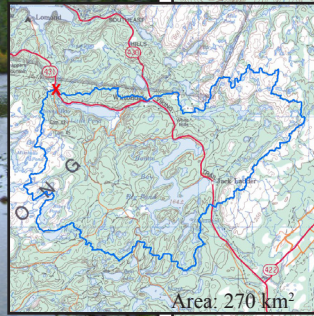


Lomond River at Route 431

NF02YH0018

WESTERN



Site Description

Site Code	NF02YH0018
Name	Lomond River
Date Sampled	Sept. 30, 2008
Ecoregion(s)	Southwestern Nfld/Long Range Mountains
Stream Order	5
Basin	Lomond River
Sampled By	NL/EC
Accessibility	Sampled 30m upstream of bridge where river crosses Route 431.

Reach Data

Reach Characteristics			
Riffle	Rapid	Straight Run	Pool
X		X	X
Surrounding Vegetation (D=dominant)			
Ferns/Grasses	Shrubs	Deciduous Trees	Coniferous Trees
X	X	X	X (D)
Canopy Coverage		1-25 %	
Macrophyte Coverage		1-25 %	
Periphyton Coverage		1-5 mm thick	


Channel Data

Bankful Width	23.3 m
Wetted Width	19.1 m
Avg. Velocity	0.54 m/s
Max. Velocity	0.83 m/s
Avg. Channel Depth	37.6 cm
Max. Channel Depth	80 cm
Bankfull-Wetted Depth	n/a
Slope	n/a

Water Chemistry

Parameter	Value	Units
pH	8.0	pH units
Conductivity	175.5	uS/cm
Dissolved Oxygen	10.26	mg/L
Temperature	13.6	°C
Turbidity	0.2	NTU
Copper	0.3	ug/L
Iron	<0.02	mg/L
Lead	<0.1	ug/L
Zinc	<0.3	ug/L
Chloride	6.06	mg/L
Phosphorous (Total)	0.003	mg/L
Nitrate	0.05	mg/L
Nickel	0.2	ug/L

Substrate

Dominant Substrate	small cobble
2nd Dominant Substrate	large pebble
Surrounding Material	gravel
Embeddedness	n/a
Median Particle Size	4.15 cm
Geometric Mean Particle Size	7.4 cm
Photo of Substrate	
<small>Substrate Size Class Categories: Organic cover; Sand/silt/clay (< 0.1 cm); Coarse sand (0.1 - 0.2 cm); Gravel (0.2 - 1.6 cm); Small pebble (1.6 - 3.2 cm); Large pebble (3.2 - 6.4 cm); Small cobble (6.4 - 12.8 cm); Large cobble (12.8 - 25.6 cm); Boulder (> 25.6 cm); Bedrock.</small>	