

Pinchgut Brook at TCH

NF02YJ0004

WESTERN



Site Description

Site Code	NF02YJ0004
Name	Pinchgut Brook
Date Sampled	September 09, 2023
Ecoregion(s)	Western Newfoundland Forest
Stream Order	5
Basin	Harry's River
Sampled By	NL/EC
Accessibility	Access via TCH, sampled 30m up-stream of bridge at TCH

Reach Data

Reach Characteristics			
Riffle	Rapid	Straight Run	Pool
X			
Surrounding Vegetation (D=dominant)			
Ferns/Grasses	Shrubs	Deciduous Trees	Coniferous Trees
	X (D)	X	X
Canopy Coverage		1-25 %	
Macrophyte Coverage		0 %	
Periphyton Coverage		<0.5 mm thick	

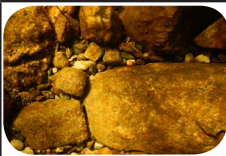
Channel Data

Bankful Width	16.23 m
Wetted Width	13.81 m
Avg. Velocity	0.50 m/s
Max. Velocity	0.89 m/s
Avg. Channel Depth	32.7 cm
Max. Channel Depth	45.5 cm
Bankfull-Wetted Depth	37 cm
Slope	0.004

Water Chemistry

Parameter	Value	Units
pH	8.24	pH units
Specific Conductivity	205.8	µS/cm
Dissolved Oxygen	9.38	mg/L
Temperature	18.816	°C
Turbidity	0.18	NTU
Copper	0.26	µg/L
Iron	19	µg/L
Lead	0.01	µg/L
Zinc	0.21	µg/L
Chloride	8.6	mg/L
Phosphorous (Total)	0.002	mg/L
Nitrate	0.06	mg/L
Nickel	0.211	µg/L

Substrate

Dominant Substrate	cobble
2nd Dominant Substrate	small cobble
Surrounding Material	gravel
Embeddedness	1/4
Median Particle Size	14 cm
Geometric Mean Particle Size	13.3 cm
Photo of Substrate	
<small>Substrate Size Class Categories: Organic cover; Sand/silt/clay (< 0.1 cm); Coarse sand (0.1 - 0.2 cm); Gravel (0.2 - 1.6 cm); Small pebble (1.6 - 3.2 cm); Large pebble (3.2 - 6.4 cm); Small cobble (6.4 - 12.8 cm); Large cobble (12.8 - 25.6 cm); Boulder (> 25.6 cm); Bedrock.</small>	

Pinchgut Brook at TCH

NF02YJ0004

WESTERN



Site Description

Site Code	NF02YJ0004
Name	Pinchgut Brook
Date Sampled	October 04, 2022
Ecoregion(s)	Southwestern Newfoundland
Stream Order	5
Basin	Harry's River
Sampled By	NL/EC
Accessibility	Access via TCH, sampled 30m up-stream of bridge at TCH

Reach Data

Reach Characteristics			
Riffle	Rapid	Straight Run	Pool
X	X	X	
Surrounding Vegetation (D=dominant)			
Ferns/Grasses	Shrubs	Deciduous Trees	Coniferous Trees
X	X (D)	X	X
Canopy Coverage		1-25 %	
Macrophyte Coverage		0 %	
Periphyton Coverage		1-5 mm thick	

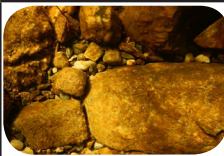
Channel Data

Bankful Width	15.6 m
Wetted Width	13.4 m
Avg. Velocity	0.59 m/s
Max. Velocity	1.04 m/s
Avg. Channel Depth	48 cm
Max. Channel Depth	63 cm
Bankfull-Wetted Depth	90 cm
Slope	0.002m/m

Water Chemistry

Parameter	Value	Units
pH	8.22	pH units
Specific Conductivity	190.8	µS/cm
Dissolved Oxygen	10.47	mg/L
Temperature	11.770	°C
Turbidity	0	NTU
Copper	0.5	µg/L
Iron	28.3	µg/L
Lead	0.02	µg/L
Zinc	1.46	µg/L
Chloride	6.9	mg/L
Phosphorous (Total)	0.002	mg/L
Nitrate	0.09	mg/L
Nickel	0.297	µg/L

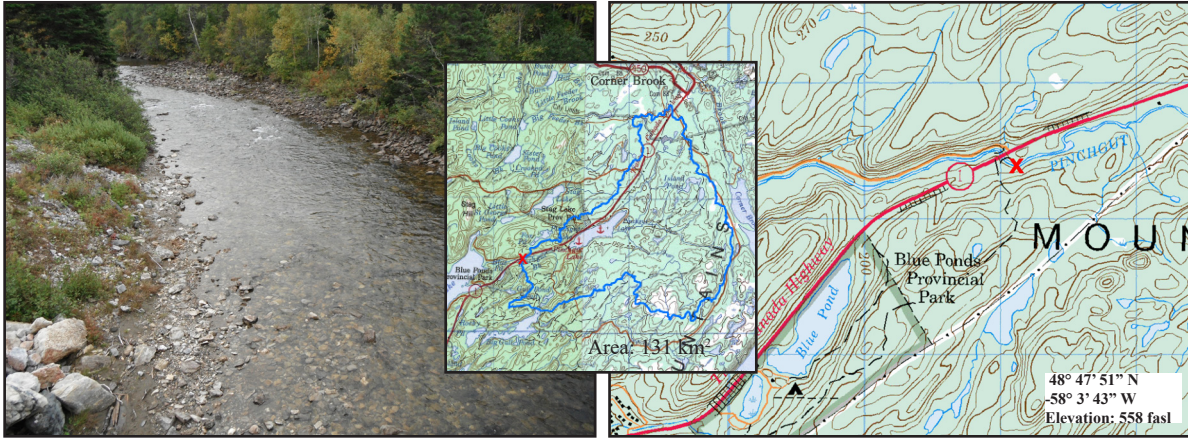
Substrate

Dominant Substrate	small cobble
2nd Dominant Substrate	large cobble
Surrounding Material	coarse sand
Embeddedness	1/4 embedded
Median Particle Size	10.65 cm
Geometric Mean Particle Size	9.6 cm
Photo of Substrate	
<small>Substrate Size Class Categories: Organic cover; Sand/silt/clay (< 0.1 cm); Coarse sand (0.1 - 0.2 cm); Gravel (0.2 - 1.6 cm); Small pebble (1.6 - 3.2 cm); Large pebble (3.2 - 6.4 cm); Small cobble (6.4 - 12.8 cm); Large cobble (12.8 - 25.6 cm); Boulder (> 25.6 cm); Bedrock.</small>	

Pinchgut Brook at TCH

NF02YJ0004

WESTERN



Site Description

Site Code	NF02YJ0004
Name	Pinchgut Brook
Date Sampled	September 24, 2019
Ecoregion(s)	Southwestern Newfoundland
Stream Order	5
Basin	Harry's River
Sampled By	NL/EC
Accessibility	Access via TCH, sampled 30 m upstream of bridge at TCH.


Reach Data

Reach Characteristics			
Riffle	Rapid	Straight Run	Pool
X		X	
Surrounding Vegetation (D=dominant)			
Ferns/Grasses	Shrubs	Deciduous Trees	Coniferous Trees
X	X (D)	X	X
Canopy Coverage		1-25 %	
Macrophyte Coverage		1-25 %	
Periphyton Coverage		1-5 mm thick	

Channel Data

Bankful Width	17.2 m
Wetted Width	14.1 m
Avg. Velocity	0.38 m/s
Max. Velocity	0.60 m/s
Avg. Channel Depth	33 cm
Max. Channel Depth	45 cm
Bankfull-Wetted Depth	60 cm
Slope	0.003 m/m

Substrate

Dominant Substrate	small cobble
2nd Dominant Substrate	large cobble
Surrounding Material	gravel
Embeddedness	1/4 embedded
Median Particle Size	10 cm
Geometric Mean Particle Size	10.9 cm
Photo of Substrate	
<small>Substrate Size Class Categories: Organic cover; Sand/silt/clay (< 0.1 cm); Coarse sand (0.1 - 0.2 cm); Gravel (0.2 - 1.6 cm); Small pebble (1.6 - 3.2 cm); Large pebble (3.2 - 6.4 cm); Small cobble (6.4 - 12.8 cm); Large cobble (12.8 - 25.6 cm); Boulder (> 25.6 cm); Bedrock.</small>	

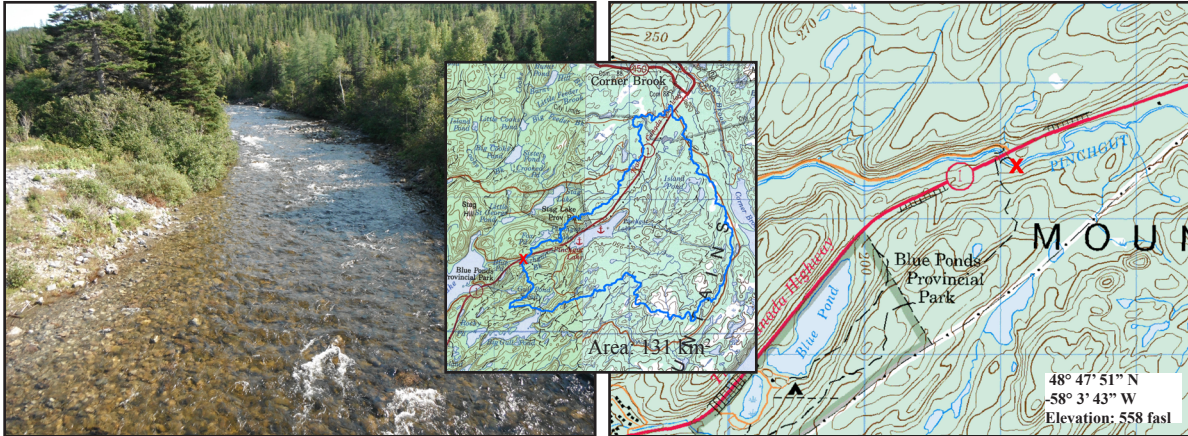
Water Chemistry

Parameter	Value	Units
pH	7.62	pH units
Conductivity	206.9	uS/cm
Dissolved Oxygen	10.05	mg/L
Temperature	11.29	°C
Turbidity	0.6	NTU
Copper	0.28	ug/L
Iron	0.0187	mg/L
Lead	0.01	ug/L
Zinc	0.22	ug/L
Chloride	10.9	mg/L
Phosphorous (Total)	0.003	mg/L
Nitrate	0.15	mg/L
Nickel	0.25	ug/L

Pinchgut Brook at TCH

NF02YJ0004

WESTERN



Site Description

Site Code	NF02YJ0004
Name	Pinchgut Brook
Date Sampled	September 25, 2018
Ecoregion(s)	Southwestern Newfoundland
Stream Order	5
Basin	Harry's River
Sampled By	NL/EC
Accessibility	Access via TCH, sampled 30 m upstream of bridge at TCH.

Reach Data

Reach Characteristics			
Riffle	Rapid	Straight Run	Pool
X	X	X	
Surrounding Vegetation (D=dominant)			
Ferns/Grasses	Shrubs	Deciduous Trees	Coniferous Trees
X	X (D)	X	X
Canopy Coverage		1-25 %	
Macrophyte Coverage		1-25 %	
Periphyton Coverage		0.5-1 mm thick	


Channel Data

Bankful Width	21.7 m
Wetted Width	18.2 m
Avg. Velocity	0.88 m/s
Max. Velocity	1.33 m/s
Avg. Channel Depth	49 cm
Max. Channel Depth	62 cm
Bankfull-Wetted Depth	30 cm
Slope	0.002 m/m

Water Chemistry

Parameter	Value	Units
pH	8.12	pH units
Conductivity	211.4	uS/cm
Dissolved Oxygen	10.26	mg/L
Temperature	11.47	°C
Turbidity	0.6	NTU
Copper	0.3	ug/L
Iron	0.0301	mg/L
Lead	<0.03	ug/L
Zinc	0.3	ug/L
Chloride	9.3	mg/L
Phosphorous (Total)	0.003	mg/L
Nitrate	0.14	mg/L
Nickel	0.25	ug/L

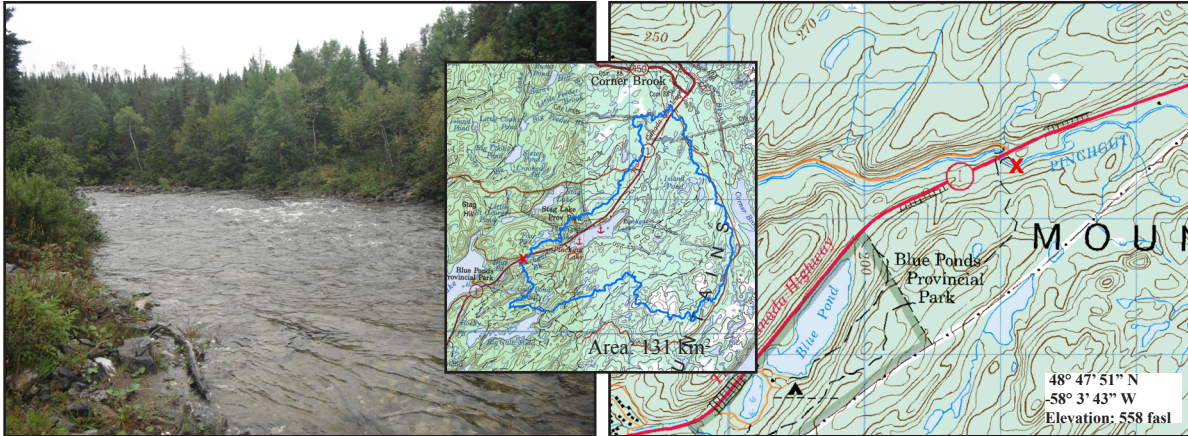
Substrate

Dominant Substrate	small cobble
2nd Dominant Substrate	large cobble
Surrounding Material	gravel
Embeddedness	1/4 embedded
Median Particle Size	12.0 cm
Geometric Mean Particle Size	11.9 cm
Photo of Substrate	
<small>Substrate Size Class Categories: Organic cover; Sand/silt/clay (< 0.1 cm); Coarse sand (0.1 - 0.2 cm); Gravel (0.2 - 1.6 cm); Small pebble (1.6 - 3.2 cm); Large pebble (3.2 - 6.4 cm); Small cobble (6.4 - 12.8 cm); Large cobble (12.8 - 25.6 cm); Boulder (> 25.6 cm); Bedrock.</small>	

Pinchgut Brook at TCH

NF02YJ0004

WESTERN



Site Description

Site Code	NF02YJ0004
Name	Pinchgut Brook
Date Sampled	September 13, 2017
Ecoregion(s)	Southwestern Newfoundland
Stream Order	5
Basin	Harry's River
Sampled By	NL/EC
Accessibility	Access via TCH, sampled 30 m upstream of bridge at TCH.

Reach Data

Reach Characteristics			
Riffle	Rapid	Straight Run	Pool
X	X	X	X
Surrounding Vegetation (D=dominant)			
Ferns/Grasses	Shrubs	Deciduous Trees	Coniferous Trees
X	X (D)	X	X
Canopy Coverage		1-25 %	
Macrophyte Coverage		1-25 %	
Periphyton Coverage		0.5-1 mm thick	

Channel Data

Bankful Width	16.85 m
Wetted Width	15.40 m
Avg. Velocity	0.99 m/s
Max. Velocity	1.18 m/s
Avg. Channel Depth	47.3 cm
Max. Channel Depth	67 cm
Bankfull-Wetted Depth	35 cm
Slope	0.002 m/m

Water Chemistry

Parameter	Value	Units
pH	8.14	pH units
Conductivity	224	uS/cm
Dissolved Oxygen	9.67	mg/L
Temperature	13.94	°C
Turbidity	1.1	NTU
Copper	0.3	ug/L
Iron	0.0514	mg/L
Lead	0.05	ug/L
Zinc	0.7	ug/L
Chloride	11	mg/L
Phosphorous (Total)	0.003	mg/L
Nitrate	0.47	mg/L
Nickel	0.27	ug/L

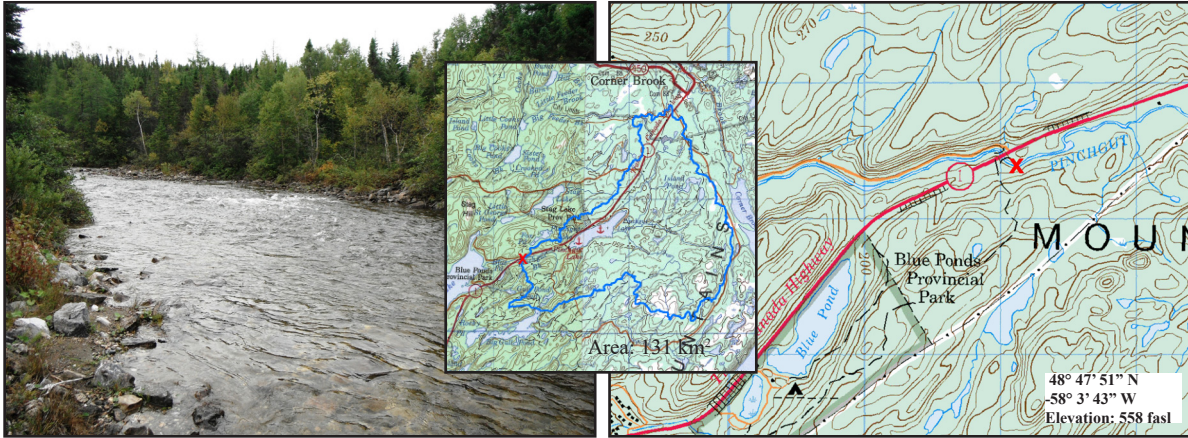
Substrate

Dominant Substrate	small cobble
2nd Dominant Substrate	large cobble
Surrounding Material	gravel
Embeddedness	1/4 embedded
Median Particle Size	10 cm
Geometric Mean Particle Size	10.1 cm
Photo of Substrate	
<small>Substrate Size Class Categories: Organic cover; Sand/silt/clay (< 0.1 cm); Coarse sand (0.1 - 0.2 cm); Gravel (0.2 - 1.6 cm); Small pebble (1.6 - 3.2 cm); Large pebble (3.2 - 6.4 cm); Small cobble (6.4 - 12.8 cm); Large cobble (12.8 - 25.6 cm); Boulder (> 25.6 cm); Bedrock.</small>	

Pinchgut Brook at TCH

NF02YJ0004

WESTERN



Site Description

Site Code	NF02YJ0004
Name	Pinchgut Brook
Date Sampled	September 20, 2016
Ecoregion(s)	Southwestern Newfoundland
Stream Order	5
Basin	Harry's River
Sampled By	NL/EC
Accessibility	Access via TCH, sampled 30 m upstream of bridge at TCH.

Reach Data

Reach Characteristics			
Riffle	Rapid	Straight Run	Pool
X		X	X
Surrounding Vegetation (D=dominant)			
Ferns/Grasses	Shrubs	Deciduous Trees	Coniferous Trees
X	X	X (D)	X
Canopy Coverage		1-25 %	
Macrophyte Coverage		1-25 %	
Periphyton Coverage		1-5 mm thick	

Channel Data

Bankful Width	17.4 m
Wetted Width	14.6 m
Avg. Velocity	0.75 m/s
Max. Velocity	1.11 m/s
Avg. Channel Depth	45.7 cm
Max. Channel Depth	59 cm
Bankfull-Wetted Depth	50 cm
Slope	0.002 m/m

Water Chemistry

Parameter	Value	Units
pH	8.00	pH units
Conductivity	193.3	uS/cm
Dissolved Oxygen	10.17	mg/L
Temperature	13.06	°C
Turbidity	0.4	NTU
Copper	0.26	ug/L
Iron	0.03	mg/L
Lead	<0.03	ug/L
Zinc	0.33	ug/L
Chloride	10.7	mg/L
Phosphorous (Total)	0.003	mg/L
Nitrate	0.09	mg/L
Nickel	0.25	ug/L

Substrate

Dominant Substrate	large cobble
2nd Dominant Substrate	small cobble
Surrounding Material	coarse sand
Embeddedness	1/4 embedded
Median Particle Size	14 cm
Geometric Mean Particle Size	12.6 cm

Photo of Substrate

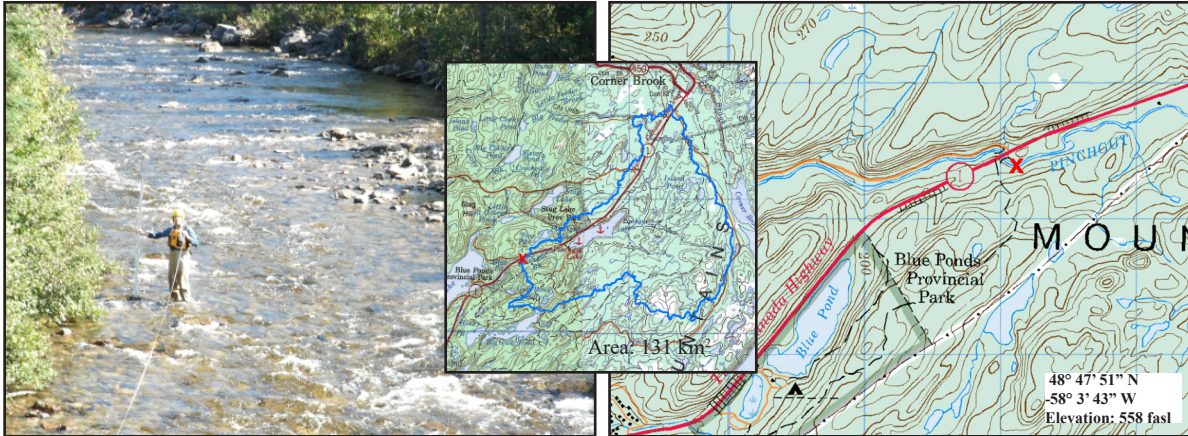


Substrate Size Class Categories: Organic cover; Sand/silt/clay (< 0.1 cm); Coarse sand (0.1 - 0.2 cm); Gravel (0.2 - 1.6 cm); Small pebble (1.6 - 3.2 cm); Large pebble (3.2 - 6.4 cm); Small cobble (6.4 - 12.8 cm); Large cobble (12.8 - 25.6 cm); Boulder (> 25.6 cm); Bedrock.

Pinchgut Brook at TCH

NF02YJ0004

WESTERN



Site Description

Site Code	NF02YJ0004
Name	Pinchgut Brook
Date Sampled	September 23, 2015
Ecoregion(s)	Southwestern Newfoundland
Stream Order	5
Basin	Harry's River
Sampled By	NL/EC
Accessibility	Access via TCH, sampled 30 m upstream of bridge at TCH.

Reach Data

Reach Characteristics			
Riffle	Rapid	Straight Run	Pool
X	X	X	
Surrounding Vegetation (D=dominant)			
Ferns/Grasses	Shrubs	Deciduous Trees	Coniferous Trees
X	X (D)	X	X
Canopy Coverage		1-25 %	
Macrophyte Coverage		0 %	
Periphyton Coverage		1-5 mm thick	


Channel Data

Bankful Width	16 m
Wetted Width	14 m
Avg. Velocity	0.56 m/s
Max. Velocity	0.93 m/s
Avg. Channel Depth	40.3 cm
Max. Channel Depth	67 cm
Bankfull-Wetted Depth	38 cm
Slope	0.015 m/m

Water Chemistry

Parameter	Value	Units
pH	7.90	pH units
Conductivity	204.4	uS/cm
Dissolved Oxygen	9.49	mg/L
Temperature	16.1	°C
Turbidity	0.3	NTU
Copper	0.25	ug/L
Iron	0.025	mg/L
Lead	<0.03	ug/L
Zinc	0.19	ug/L
Chloride	8.80	mg/L
Phosphorous (Total)	<0.002	mg/L
Nitrate	0.16	mg/L
Nickel	0.25	ug/L

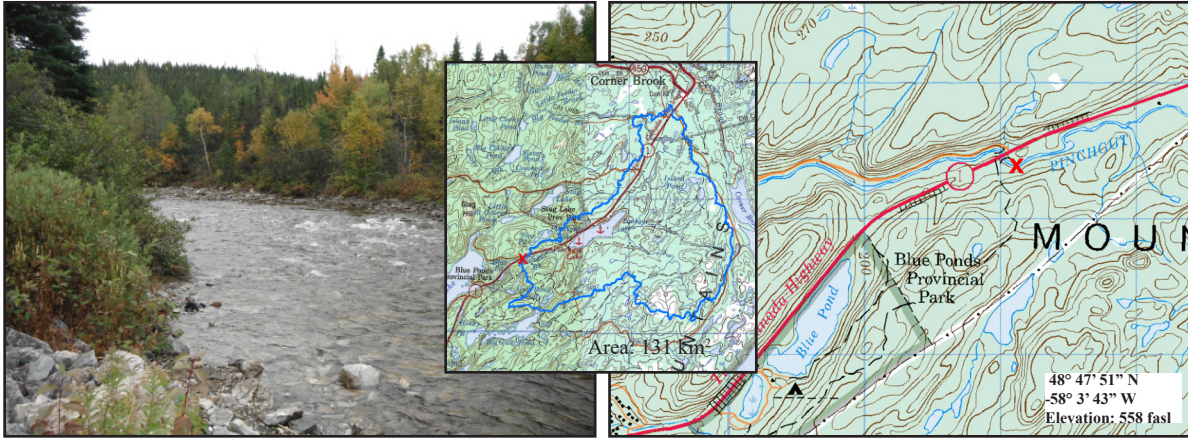
Substrate

Dominant Substrate	large cobble
2nd Dominant Substrate	small cobble
Surrounding Material	gravel
Embeddedness	1/4 embedded
Median Particle Size	11 cm
Geometric Mean Particle Size	10.6 cm
Photo of Substrate	
<small>Substrate Size Class Categories: Organic cover; Sand/silt/clay (< 0.1 cm); Coarse sand (0.1 - 0.2 cm); Gravel (0.2 - 1.6 cm); Small pebble (1.6 - 3.2 cm); Large pebble (3.2 - 6.4 cm); Small cobble (6.4 - 12.8 cm); Large cobble (12.8 - 25.6 cm); Boulder (> 25.6 cm); Bedrock.</small>	

Pinchgut Brook at TCH

NF02YJ0004

WESTERN



Site Description

Site Code	NF02YJ0004
Name	Pinchgut Brook
Date Sampled	September 30, 2014
Ecoregion(s)	Southwestern Newfoundland
Stream Order	5
Basin	Harry's River
Sampled By	NL/EC
Accessibility	Access via TCH, sampled 30 m upstream of bridge at TCH.

Reach Data

Reach Characteristics			
Riffle	Rapid	Straight Run	Pool
X	X	X	
Surrounding Vegetation (D=dominant)			
Ferns/Grasses	Shrubs	Deciduous Trees	Coniferous Trees
X	X (D)	X	X
Canopy Coverage		1-25 %	
Macrophyte Coverage		1-25 %	
Periphyton Coverage		1-5 mm thick	


Channel Data

Bankful Width	16.7 m
Wetted Width	13.2 m
Avg. Velocity	0.91 m/s
Max. Velocity	1.33 m/s
Avg. Channel Depth	39.5 cm
Max. Channel Depth	54 cm
Bankfull-Wetted Depth	100 cm
Slope	0.009 m/m

Water Chemistry

Parameter	Value	Units
pH	8.10	pH units
Conductivity	174.6	uS/cm
Dissolved Oxygen	10.67	mg/L
Temperature	10.92	°C
Turbidity	1.4	NTU
Copper	0.27	ug/L
Iron	0.03	mg/L
Lead	<0.03	ug/L
Zinc	0.24	ug/L
Chloride	8.60	mg/L
Phosphorous (Total)	0.003	mg/L
Nitrate	0.18	mg/L
Nickel	0.16	ug/L

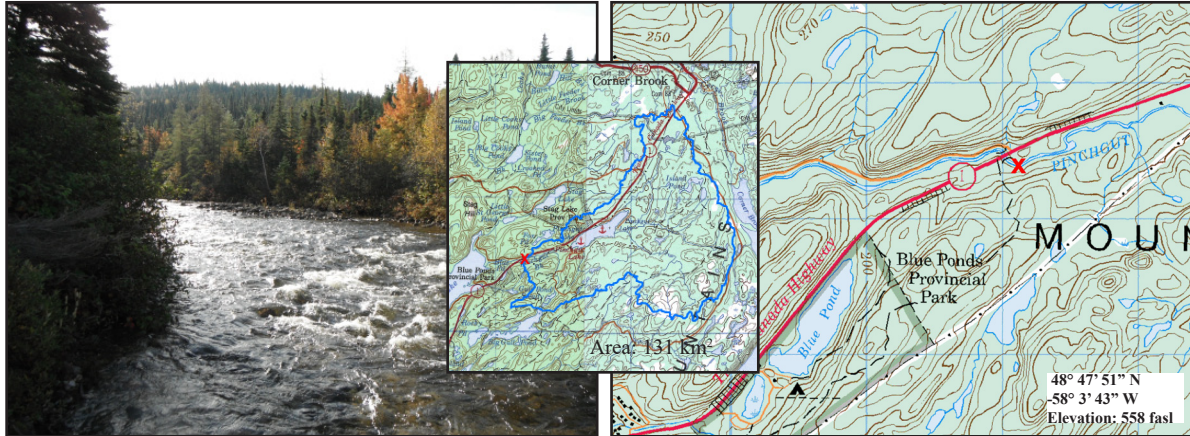
Substrate

Dominant Substrate	large cobble
2nd Dominant Substrate	boulder
Surrounding Material	coarse sand
Embeddedness	1/4 embedded
Median Particle Size	18.5 cm
Geometric Mean Particle Size	16.2 cm
Photo of Substrate	
<small>Substrate Size Class Categories: Organic cover; Sand/silt/clay (< 0.1 cm); Coarse sand (0.1 - 0.2 cm); Gravel (0.2 - 1.6 cm); Small pebble (1.6 - 3.2 cm); Large pebble (3.2 - 6.4 cm); Small cobble (6.4 - 12.8 cm); Large cobble (12.8 - 25.6 cm); Boulder (> 25.6 cm); Bedrock.</small>	

Pinchgut Brook at TCH

NF02YJ0004

WESTERN



Site Description

Site Code	NF02YJ0004
Name	Pinchgut Brook
Date Sampled	October 1, 2013
Ecoregion(s)	Southwestern Newfoundland
Stream Order	5
Basin	Harry's River
Sampled By	NL/EC
Accessibility	Access via TCH, sampled 30 m upstream of bridge at TCH.


Reach Data

Reach Characteristics			
Riffle	Rapid	Straight Run	Pool
X			
Surrounding Vegetation (D=dominant)			
Ferns/Grasses	Shrubs	Deciduous Trees	Coniferous Trees
X	X (D)	X	X
Canopy Coverage		0 %	
Macrophyte Coverage		0 %	
Periphyton Coverage		0.5-1 mm thick	

Channel Data

Bankful Width	17.7 m
Wetted Width	14.9 m
Avg. Velocity	0.82 m/s
Max. Velocity	1.33 m/s
Avg. Channel Depth	49.8 cm
Max. Channel Depth	63.5 cm
Bankfull-Wetted Depth	50 cm
Slope	0.012 m/m

Substrate

Dominant Substrate	small cobble
2nd Dominant Substrate	large pebble
Surrounding Material	small pebble
Embeddedness	1/4 embedded
Median Particle Size	10 cm
Geometric Mean Particle Size	9.7 cm
Photo of Substrate	
<small>Substrate Size Class Categories: Organic cover; Sand/silt/clay (< 0.1 cm); Coarse sand (0.1 - 0.2 cm); Gravel (0.2 - 1.6 cm); Small pebble (1.6 - 3.2 cm); Large pebble (3.2 - 6.4 cm); Small cobble (6.4 - 12.8 cm); Large cobble (12.8 - 25.6 cm); Boulder (> 25.6 cm); Bedrock.</small>	

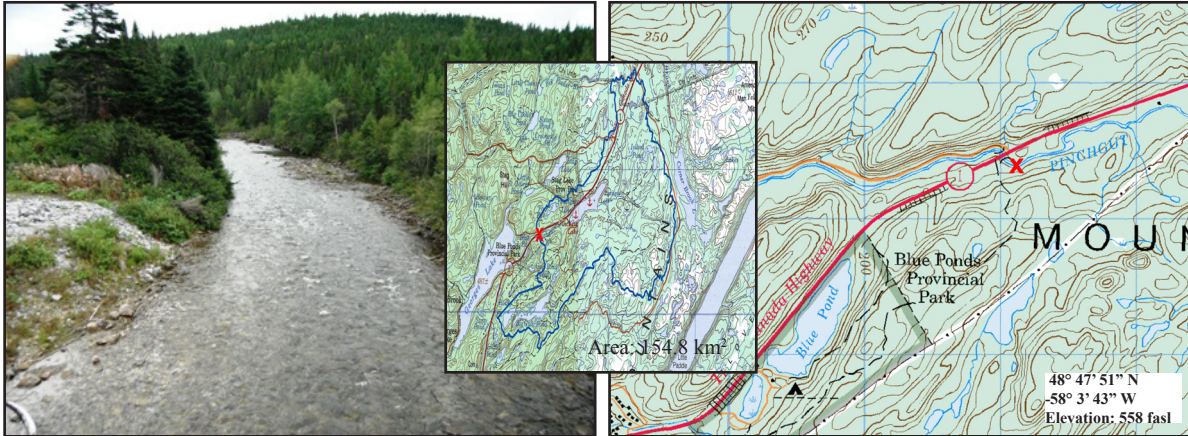
Water Chemistry

Parameter	Value	Units
pH	7.90	pH units
Conductivity	208.7	uS/cm
Dissolved Oxygen	9.65	mg/L
Temperature	13.14	°C
Turbidity	0.4	NTU
Copper	0.29	ug/L
Iron	0.03	mg/L
Lead	<0.03	ug/L
Zinc	0.35	ug/L
Chloride	8.76	mg/L
Phosphorous (Total)	<0.002	mg/L
Nitrate	0.13	mg/L
Nickel	0.28	ug/L

Pinchgut Brook

NF02YJ0004

WESTERN



Site Description

Site Code	NF02YJ0004
Name	Pinchgut Brook
Date Sampled	Sept. 6, 2012
Ecoregion(s)	Southwestern Newfoundland
Stream Order	5
Basin	Harry's River
Sampled By	NL
Accessibility	Access via TCH, sampled 30 m upstream of bridge at TCH at WQMA sampling site

Reach Data

Reach Characteristics			
Riffle	Rapid	Straight Run	Pool
X			
Surrounding Vegetation (D=dominant)			
Ferns/Grasses	Shrubs	Deciduous Trees	Coniferous Trees
X	X	X (D)	X
Canopy Coverage		0 %	
Macrophyte Coverage		0 %	
Periphyton Coverage		0.5-1 mm thick	


Channel Data

Bankful Width	17.0 m
Wetted Width	15.3 m
Avg. Velocity	0.42 m/s
Max. Velocity	0.75 m/s
Avg. Channel Depth	39.1 cm
Max. Channel Depth	57 cm
Bankfull-Wetted Depth	40 cm
Slope	0.008 m/m

Water Chemistry

Parameter	Value	Units
pH	7.85	pH units
Conductivity	209.6	uS/cm
Dissolved Oxygen	9.2	mg/L
Temperature	16.1	°C
Turbidity	0.6	NTU
Copper	0.22	ug/L
Iron	0.02	mg/L
Lead	<0.03	ug/L
Zinc	0.17	ug/L
Chloride	10.65	mg/L
Phosphorous (Total)	<0.002	mg/L
Nitrate	0.15	mg/L
Nickel	0.26	ug/L

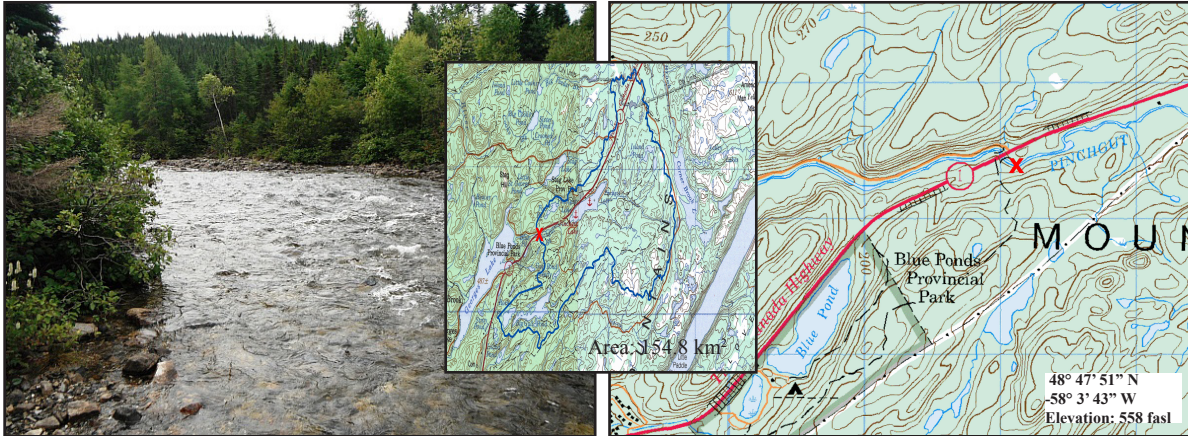
Substrate

Dominant Substrate	small cobble
2nd Dominant Substrate	large cobble
Surrounding Material	coarse sand
Embeddedness	1/4 embedded
Median Particle Size	9.3 cm
Geometric Mean Particle Size	9.5 cm
Photo of Substrate	
<p><i>Substrate Size Class Categories: Organic cover; Sand/silt/clay (< 0.1 cm); Coarse sand (0.1 - 0.2 cm); Gravel (0.2 - 1.6 cm); Small pebble (1.6 - 3.2 cm); Large pebble (3.2 - 6.4 cm); Small cobble (6.4 - 12.8 cm); Large cobble (12.8 - 25.6 cm); Boulder (> 25.6 cm); Bedrock.</i></p>	

Pinchgut Brook

NF02YJ0004

WESTERN



Site Description

Site Code	NF02YJ0004
Name	Pinchgut Brook
Date Sampled	Sept. 12, 2011
Ecoregion(s)	Southwestern Newfoundland
Stream Order	5
Basin	Harry's River
Sampled By	NL/EC
Accessibility	Access via TCH, sampled 30 m upstream of bridge at TCH at WQMA sampling site

Reach Data

Reach Characteristics			
Riffle	Rapid	Straight Run	Pool
X			
Surrounding Vegetation (D=dominant)			
Ferns/Grasses	Shrubs	Deciduous Trees	Coniferous Trees
X	X (D)	X	X
Canopy Coverage		0 %	
Macrophyte Coverage		0 %	
Periphyton Coverage		1-5 mm thick	


Channel Data

Bankful Width	18.01 m
Wetted Width	14.20 m
Avg. Velocity	0.59 m/s
Max. Velocity	0.98 m/s
Avg. Channel Depth	44.2 cm
Max. Channel Depth	48 cm
Bankfull-Wetted Depth	70 cm
Slope	0.03 m/m

Water Chemistry

Parameter	Value	Units
pH	7.65	pH units
Conductivity	193.8	uS/cm
Dissolved Oxygen	9.86	mg/L
Temperature	14.04	°C
Turbidity	0.2	NTU
Copper	0.26	ug/L
Iron	0.03	mg/L
Lead	<0.03	ug/L
Zinc	0.21	ug/L
Chloride	7.25	mg/L
Phosphorous (Total)	0.002	mg/L
Nitrate	0.1	mg/L
Nickel	0.3	ug/L

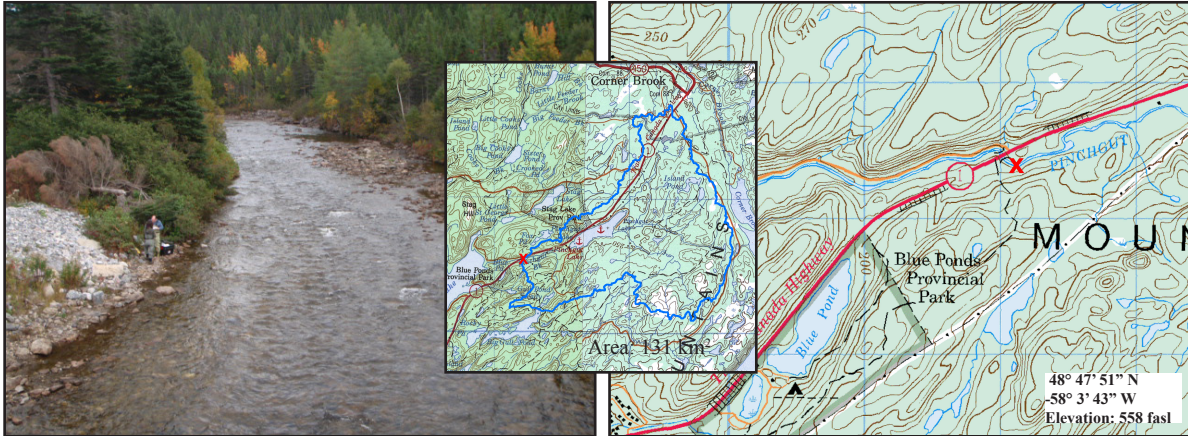
Substrate

Dominant Substrate	small cobble
2nd Dominant Substrate	large cobble
Surrounding Material	gravel
Embeddedness	1/4 embedded
Median Particle Size	11.0 cm
Geometric Mean Particle Size	11.5 cm
Photo of Substrate	
<p><i>Substrate Size Class Categories: Organic cover; Sand/silt/clay (< 0.1 cm); Coarse sand (0.1 - 0.2 cm); Gravel (0.2 - 1.6 cm); Small pebble (1.6 - 3.2 cm); Large pebble (3.2 - 6.4 cm); Small cobble (6.4 - 12.8 cm); Large cobble (12.8 - 25.6 cm); Boulder (> 25.6 cm); Bedrock.</i></p>	

Pinchgut Brook at TCH

NF02YJ0004

WESTERN



Site Description

Site Code	NF02YJ0004
Name	Pinchgut Brook
Date Sampled	Sept. 29, 2008
Ecoregion(s)	Southwestern Newfoundland
Stream Order	5
Basin	Harry's River
Sampled By	NL/EC
Accessibility	Access via TCH, sampled 30 m upstream of bridge at TCH.

Reach Data

Reach Characteristics			
Riffle	Rapid	Straight Run	Pool
X		X	
Surrounding Vegetation (D=dominant)			
Ferns/Grasses	Shrubs	Deciduous Trees	Coniferous Trees
X	X (D)	X	X
Canopy Coverage		1-25 %	
Macrophyte Coverage		0 %	
Periphyton Coverage		1-5 mm thick	


Channel Data

Bankful Width	15.4 m
Wetted Width	13.8 m
Avg. Velocity	0.51 m/s
Max. Velocity	1.06 m/s
Avg. Channel Depth	38.6 cm
Max. Channel Depth	56 cm
Bankfull-Wetted Depth	35 cm
Slope	n/a

Water Chemistry

Parameter	Value	Units
pH	7.66	pH units
Conductivity	199.3	uS/cm
Dissolved Oxygen	9.53	mg/L
Temperature	13.39	°C
Turbidity	0.2	NTU
Copper	0.4	ug/L
Iron	0.02	mg/L
Lead	<0.1	ug/L
Zinc	0.3	ug/L
Chloride	6.85	mg/L
Phosphorous (Total)	0.002	mg/L
Nitrate	0.07	mg/L
Nickel	0.2	ug/L

Substrate

Dominant Substrate	small cobble
2nd Dominant Substrate	large cobble
Surrounding Material	gravel
Embeddedness	n/a
Median Particle Size	19 cm
Geometric Mean Particle Size	7.4 cm
Photo of Substrate	
<small>Substrate Size Class Categories: Organic cover; Sand/silt/clay (< 0.1 cm); Coarse sand (0.1 - 0.2 cm); Gravel (0.2 - 1.6 cm); Small pebble (1.6 - 3.2 cm); Large pebble (3.2 - 6.4 cm); Small cobble (6.4 - 12.8 cm); Large cobble (12.8 - 25.6 cm); Boulder (> 25.6 cm); Bedrock.</small>	