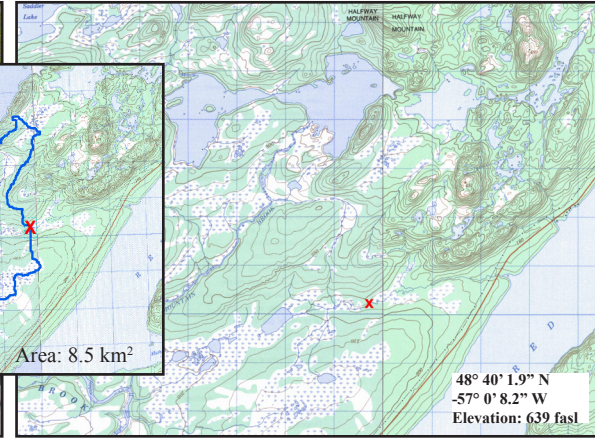


# Unnamed Stream on Halfway Mountain Access Road

NF02YN0046

CENTRAL



## Site Description

<b>Site Code</b>	NF02YN0046
<b>Name</b>	Unnamed Stream
<b>Date Sampled</b>	Sept. 14, 2010
<b>Ecoregion(s)</b>	Central Newfoundland
<b>Stream Order</b>	3
<b>Basin</b>	Exploits River
<b>Sampled By</b>	NL
<b>Accessibility</b>	Sampled upstream of removed bridge, 23km SW of Route 370, 1.25km in on access road

## Reach Data

Reach Characteristics			
Riffle	Rapid	Straight Run	Pool
X		X	
Surrounding Vegetation (D=dominant)			
Ferns/Grasses	Shrubs	Deciduous Trees	Coniferous Trees
X	X (D)		X
<b>Canopy Coverage</b>		1-25 %	
<b>Macrophyte Coverage</b>		0 %	
<b>Periphyton Coverage</b>		1-5 mm thick	


## Channel Data

<b>Bankful Width</b>	4.25 m
<b>Wetted Width</b>	3.95 m
<b>Avg. Velocity</b>	0.2 m/s
<b>Max. Velocity</b>	0.39 m/s
<b>Avg. Channel Depth</b>	24.25 cm
<b>Max. Channel Depth</b>	29.5 cm
<b>Bankfull-Wetted Depth</b>	45.5 cm
<b>Slope</b>	0.05 m/m

## Water Chemistry

Parameter	Value	Units
pH	7.24	pH units
Conductivity	55.3	uS/cm
Dissolved Oxygen	10.52	mg/L
Temperature	13.06	°C
Turbidity	0.8	NTU
Copper	0.19	ug/L
Iron	0.15	mg/L
Lead	0.05	ug/L
Zinc	0.4	ug/L
Chloride	1.73	mg/L
Phosphorous (Total)	0.004	mg/L
Nitrate	0.03	mg/L
Nickel	0.74	ug/L

## Substrate

<b>Dominant Substrate</b>	large cobble
<b>2nd Dominant Substrate</b>	small cobble
<b>Surrounding Material</b>	large pebble
<b>Embeddedness</b>	unembedded
<b>Median Particle Size</b>	12.0 cm
<b>Geometric Mean Particle Size</b>	11.8 cm
<b>Photo of Substrate</b>	
<small>Substrate Size Class Categories: Organic cover; Sand/silt/clay (&lt; 0.1 cm); Coarse sand (0.1 - 0.2 cm); Gravel (0.2 - 1.6 cm); Small pebble (1.6 - 3.2 cm); Large pebble (3.2 - 6.4 cm); Small cobble (6.4 - 12.8 cm); Large cobble (12.8 - 25.6 cm); Boulder (&gt; 25.6 cm); Bedrock.</small>	