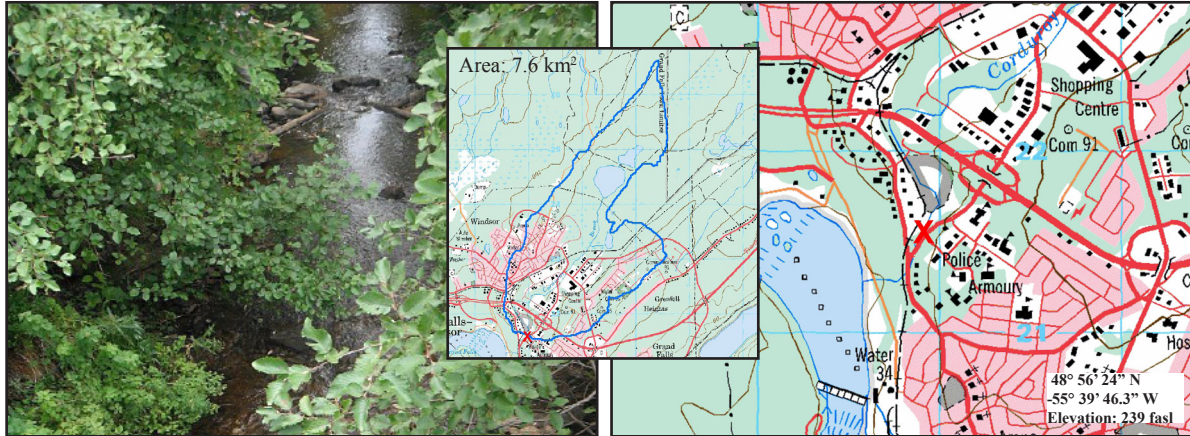


Corduroy Brook near Centennial Park

NF02YO0142

CENTRAL



Site Description

Site Code	NF02YO0142
Name	Corduroy Brook
Date Sampled	Sept 14, 2011
Ecoregion(s)	Central Newfoundland
Stream Order	2
Basin	Notre Dame Bay - Exploits
Sampled By	NL/EC
Accessibility	Sampled at foot bridge near Centennial Field parking lot in Grand Falls-Windsor

Reach Data

Reach Characteristics			
Riffle	Rapid	Straight Run	Pool
X		X	
Surrounding Vegetation (D=dominant)			
Ferns/Grasses	Shrubs	Deciduous Trees	Coniferous Trees
X	X (D)	X	
Canopy Coverage		76-100 %	
Macrophyte Coverage		0 %	
Periphyton Coverage		0.5-1 mm thick	


Channel Data

Bankful Width	7.5 m
Wetted Width	3.1 m
Avg. Velocity	0.17 m/s
Max. Velocity	0.29 m/s
Avg. Channel Depth	8.33 cm
Max. Channel Depth	10 cm
Bankfull-Wetted Depth	138 cm
Slope	0.02 m/m

Water Chemistry

Parameter	Value	Units
pH	7.14	pH units
Conductivity	389.3	uS/cm
Dissolved Oxygen	9.3	mg/L
Temperature	16.01	°C
Turbidity	1.7	NTU
Copper	0.41	ug/L
Iron	0.74	mg/L
Lead	0.04	ug/L
Zinc	2.21	ug/L
Chloride	62.85	mg/L
Phosphorous (Total)	0.007	mg/L
Nitrate	0.14	mg/L
Nickel	3.08	ug/L

Substrate

Dominant Substrate	small cobble
2nd Dominant Substrate	large pebble
Surrounding Material	gravel
Embeddedness	1/4 embedded
Median Particle Size	7.0 cm
Geometric Mean Particle Size	7.5 cm
Photo of Substrate	
<small>Substrate Size Class Categories: Organic cover; Sand/silt/clay (< 0.1 cm); Coarse sand (0.1 - 0.2 cm); Gravel (0.2 - 1.6 cm); Small pebble (1.6 - 3.2 cm); Large pebble (3.2 - 6.4 cm); Small cobble (6.4 - 12.8 cm); Large cobble (12.8 - 25.6 cm); Boulder (> 25.6 cm); Bedrock.</small>	