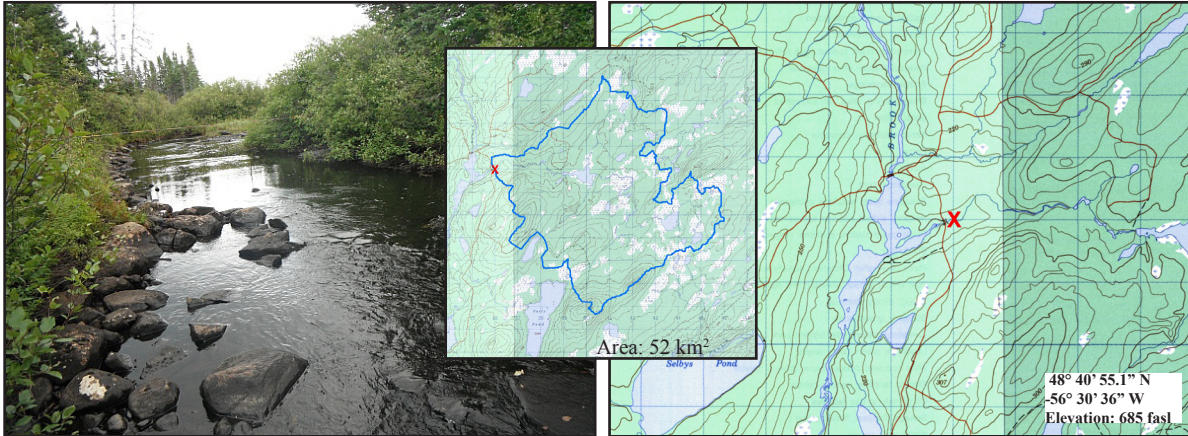


East Pond Brook below East Pond

NF02YO0192

CENTRAL



Site Description

Site Code	NF02YO0192
Name	East Pond Brook
Date Sampled	Sept 14, 2011
Ecoregion(s)	Central Newfoundland
Stream Order	3
Basin	Notre Dame Bay - Exploits
Sampled By	NL/EC
Accessibility	Sampled at real-time station d/s of probe. First river after bridge crossing Harpoon Brook

Reach Data

Reach Characteristics			
Riffle	Rapid	Straight Run	Pool
X		X	X
Surrounding Vegetation (D=dominant)			
Ferns/Grasses	Shrubs	Deciduous Trees	Coniferous Trees
X	X (D)		X
Canopy Coverage		1-25 %	
Macrophyte Coverage		1-25 %	
Periphyton Coverage		1-5 mm thick	


Channel Data

Bankful Width	10 m
Wetted Width	7 m
Avg. Velocity	0.43 m/s
Max. Velocity	0.50 m/s
Avg. Channel Depth	21.2 cm
Max. Channel Depth	30.0 cm
Bankfull-Wetted Depth	90 cm
Slope	0.036 m/m

Water Chemistry

Parameter	Value	Units
pH	6.59	pH units
Conductivity	43.1	uS/cm
Dissolved Oxygen	9.45	mg/L
Temperature	17.75	°C
Turbidity	0	NTU
Copper	0.3	ug/L
Iron	0.2	mg/L
Lead	<0.03	ug/L
Zinc	0.71	ug/L
Chloride	1.6	mg/L
Phosphorous (Total)	0.008	mg/L
Nitrate	<0.02	mg/L
Nickel	0.85	ug/L

Substrate

Dominant Substrate	large cobble
2nd Dominant Substrate	small cobble
Surrounding Material	small pebble
Embeddedness	1/4 embedded
Median Particle Size	9.0 cm
Geometric Mean Particle Size	7.9 cm
Photo of Substrate	
<small>Substrate Size Class Categories: Organic cover; Sand/silt/clay (< 0.1 cm); Coarse sand (0.1 - 0.2 cm); Gravel (0.2 - 1.6 cm); Small pebble (1.6 - 3.2 cm); Large pebble (3.2 - 6.4 cm); Small cobble (6.4 - 12.8 cm); Large cobble (12.8 - 25.6 cm); Boulder (> 25.6 cm); Bedrock.</small>	